



2 May 2025

Edition 9

# AUSTRALIAN NOTICES TO MARINERS

## Notices 351 - 382

Published fortnightly by the Australian Hydrographic Office



Australian Notices to Mariners are the authority for correcting charts and publications published by the Australian Hydrographic Office covering Australia, Papua New Guinea, Solomon Islands, Australian Antarctic Territory and Timor-Leste.

Commodore R.L. PHILLIPS RAN  
*Hydrographer of Australia*

---

### SECTIONS.

- I. **Australian Notices to Mariners, including blocks and notes.**
- II. **Hydrographic Reports.**

### SUPPLEMENTS.

- I. **Tracings**
  - II. **Cumulative List of Australian Notices to Mariners.**
  - III. **Cumulative List of Temporary and Preliminary Australian Notices to Mariners.**
  - IV. **Temporary and Preliminary Notices in force.**
- 
- 

© Commonwealth of Australia 2025

This work is copyright. Apart from any use permitted under the Copyright Act 1968, no part may be reproduced by any process, adapted, communicated or commercially exploited without prior written permission from The Commonwealth represented by the Australian Hydrographic Office.

## IMPORTANT NOTICE

This edition of Notices to Mariners includes all significant information affecting AHO products which the AHO has become aware of since the last edition. All reasonable efforts have been made to ensure the accuracy and completeness of the information, including third party information, on which these updates are based. The AHO regards third parties from which it receives information as reliable, however the AHO cannot verify all such information and errors may therefore exist. The AHO does not accept liability for errors in third party information.

---

## GENERAL INSTRUCTIONS

The substance of these notices should be inserted on the charts affected.

Bearings are referred to the true compass and are reckoned clockwise from North; those relating to lights are given as seen by an observer from seaward.

Positions quoted in notices relate to WGS84 which is the horizontal datum for all charts produced by the Australian Hydrographic Office.

The range quoted for a light is its nominal range.

Depths are with reference to the chart datum of each chart. Heights are above mean high water springs or mean higher high water, as appropriate.

The capital letter (P) or (T) after the number of any notice denotes a preliminary or temporary notice respectively, which are contained separately at the end of the permanent notices.

---

## REPORTING OF DANGERS

Mariners are particularly requested to notify the AUSTRALIAN HYDROGRAPHIC OFFICE, Locked Bag 8801 Wollongong, NSW 2500 (e-mail [datacentre@hydro.gov.au](mailto:datacentre@hydro.gov.au) or, alternatively by filling in and submitting the [Hydrographic Notes](#) forms located on the web site – [www.hydro.gov.au](http://www.hydro.gov.au)), immediately on the discovery of new dangers or suspected dangers to navigation. For changes or defects in aids to navigation notify AusSAR (Fax 02-6230 6868 or email [rccaus@amsa.gov.au](mailto:rccaus@amsa.gov.au)).

---

## AUTHORISED USE

Copies of Australian notices are available free of charge from the Australian Hydrographic Office (AHO) website ([www.hydro.gov.au](http://www.hydro.gov.au)) and through the eNotices (email) service ([www.hydro.gov.au/enotices/enotices.htm](http://www.hydro.gov.au/enotices/enotices.htm)).

Individual Notices may be copied for the purpose of inserting Notice substance on official charts and publications. Paper copies may be printed by chart agents and distributed to customers on a cost recovery basis. Participating chart agents are listed on the AHO website as providing a 'Paper Notices to Mariners' service ([www.hydro.gov.au/prodserv/agents-list.htm](http://www.hydro.gov.au/prodserv/agents-list.htm)). Copies of the notices may not be sold for profit without prior written agreement.

## NUMERICAL INDEX OF NOTICES TO MARINERS

### Edition No 9

Notices	Aus Chart, INT Chart, ENC Cell, AHP, BA Pubs
351	Aus 265, 309
352	Products - New Charts and New Editions to be published shortly
353	Aus 204, 809
354	Aus 828
355	Aus 310
356	Aus 316, 4603, INT 603
357	Aus 742, 743
358	Aus 57
359	Aus 119, 762
360	Aus 754
361	Aus 120, 776, 781
362	Aus 181
363	Aus 143, 155
364	SLB 201, 304
365(T)	Aus 268
366(T)	Aus 248, 820
367(T)	Aus 236
368(T)	Aus 236
369(T)	Aus 236
370(T)	Aus 4
371(T)	Aus 26
372(T)	Aus 57, 60
373(T)	Aus 57, 327, 742
374(T)	Aus 328, 742
375(T)	Aus 357
376(T)	Aus 357, 487, 802
377(T)	Aus 349
378(T)	Aus 155
379(T)	Aus 143, 144, 4709, INT 709
380(T)	Aus 143, 155, 157
381(T)	Aus 151
382(T)	SLB 201, 304

## NUMERICAL INDEX OF CHARTS AFFECTED

### Edition No 9

Aus Chart	Notices
Aus 4	370(T)
Aus 26	371(T)
Aus 57	358, 372(T), 373(T)
Aus 60	372(T)
Aus 119	359
Aus 120	361
Aus 143	363, 379(T), 380(T)
Aus 144	379(T)
Aus 151	381(T)
Aus 155	363, 378(T), 380(T)
Aus 157	380(T)
Aus 181	362
Aus 204	353
Aus 236	367(T), 368(T), 369(T)
Aus 248	366(T)
Aus 265	351
Aus 268	365(T)
Aus 309	351
Aus 310	355
Aus 316	356
Aus 327	373(T)
Aus 328	374(T)
Aus 349	377(T)
Aus 357	375(T), 376(T)
Aus 487	376(T)
Aus 742	357, 373(T), 374(T)
Aus 743	357
Aus 754	360
Aus 762	359
Aus 776	361
Aus 781	361
Aus 802	376(T)
Aus 809	353
Aus 820	366(T)
Aus 828	354
Aus 4603	356
Aus 4709	379(T)
SLB 201	364, 382(T)
SLB 304	364, 382(T)

INT Chart	Notices
INT 603	356
INT 709	379(T)

**351 AUSTRALIA - Products - New Charts, New Editions, Withdrawn Charts**

Australian Hydrographic Office

**New Charts**

Chart	Title and Geographical limits	Scale	Publication Date	Remarks
NIL				

**New Electronic Navigation Chart (Aus ENC)**

Cell Name	Title	Publication Date	Remarks
AU5LDC01	Australia - Queensland - Lindeman and Shaw Islands (Kennedy Sound)	01/05/2025	AU5254P1 is withdrawn.
AU5WEI01	Australia - Queensland - Gulf of Carpentaria - Weipa	01/05/2025	AU5004P1 is withdrawn.

**New Editions and Withdrawn Charts**

Chart	Title	Scale	Publication Date	Remarks
Aus 265 <b>(Edition 4)</b>	Australia - East Coast - Queensland - Approaches to Port Alma Plan: Port Alma	1:25 000  1:10 000	2/5/2025	New edition with general updating throughout; including latest bathymetric data. <b>Chart Aus 265 Edition 3 dated 5 Jun 2015 is now superseded and must be withdrawn from use.</b>
Aus 309 <b>(Edition 5)</b>	Australia - North Coast - Timor Sea - Darwin to Penguin Shoal (Eastern Sheet)	1:300 000	2/5/2025	New edition with general updating throughout; including latest bathymetric data. <b>Chart Aus 309 Edition 4 dated 3 Mar 2023 is now superseded and must be withdrawn from use.</b>

**Chart permanently withdrawn**

Charts listed above as withdrawn no longer meet chart carriage requirements and should be marked as "superseded" and replaced with the new chart/ new edition listed prior to passage through the area covered by the new chart.

When placing orders with a chart agent between notice of forthcoming edition and its publication, mariners should advise whether their order pertains to the current edition or the new edition.

For further details refer to the AHO website at [www.hydro.gov.au](http://www.hydro.gov.au) for new edition and new chart stock arrival information.

**352 AUSTRALIA - Products - New Charts and New Editions to be published shortly**

Australian Hydrographic Office

**New Charts to be published shortly**

Chart	Title	Scale	Remarks
NIL			

**New Editions to be published shortly**

Chart	Title	Scale	Remarks
NIL			

**353 AUSTRALIA - NEW SOUTH WALES - Terrigal - Light**

Transport for NSW

**Aus 204** [NE 13/9/2024]Amend light to *Fl.WG.3s 75m 5M* 33° 27'.2 S 151° 26'.5 E**Aus 809** [4/2025]Amend light to *Fl.WG.3s 5M* 33° 27'.2 S 151° 26'.5 E**354 AUSTRALIA - QUEENSLAND - Hinchinbrook Channel - Meunga Creek - Light beacon**

Maritime Safety Queensland

**Aus 828** [118/2025]

Delete light beacon 18° 13'.9 S 146° 01'.1 E

**355 AUSTRALIA - NORTHERN TERRITORY - Melville Island - Depths northwestwards**

Geoscience Australia

**Aus 310** [87/2025]

Insert	<a href="#">accompanying block A</a>	10° 30'.0 S	129° 35'.0 E
	<a href="#">accompanying block B</a>	11° 00'.0 S	130° 06'.0 E
	<a href="#">accompanying ZOC diagram</a>	8° 51'.0 S	129° 04'.0 E

**356 AUSTRALIA - TIMOR SEA - Flat Top Bank - Depths**

Geoscience Australia

**Aus 316** [12/2025]

Insert	<a href="#">accompanying block</a>	12° 22'.20 S	129° 19'.12 E
	<a href="#">accompanying ZOC diagram</a>	14° 51'.000 S	130° 27'.000 E

**Aus 4603 (INT 603)** [167/2025]Amend depth, 15<sub>g</sub>m to depth, 15<sub>g</sub>m 12° 16'.4 S 129° 29'.2 E**357 AUSTRALIA - WESTERN AUSTRALIA - Cape Preston - Port limit**

Pilbara Ports Authority Notice CPW 1/2022

**Aus 742** [354/2024]

Insert	magenta dashed line with legend, <i>Cape Preston West Port Limit</i> , between	21° 00'.00 S	115° 55'.01 E
		20° 55'.25 S	115° 55'.41 E
		20° 52'.87 S	115° 53'.27 E
		20° 43'.00 S	115° 53'.34 E
		20° 43'.00 S	116° 02'.80 E
		20° 48'.43 S	116° 02'.70 E
		20° 53'.94 S	115° 59'.71 E
		20° 57'.76 S	115° 58'.66 E
		21° 00'.00 S	115° 58'.96 E

**Aus 743** [247/2025]

Insert	magenta dashed line with legend, <i>Cape Preston West Port Limit</i> , between	21° 04'.58 S	115° 55'.99 E
		21° 03'.82 S	115° 54'.69 E
		20° 55'.25 S	115° 55'.41 E
		20° 52'.87 S	115° 53'.27 E
		20° 47'.80 S	115° 53'.30 E
		20° 47'.80 S	116° 02'.71 E
		20° 48'.43 S	116° 02'.70 E
		20° 53'.94 S	115° 59'.71 E
		20° 57'.76 S	115° 58'.66 E
		21° 00'.12 S	115° 58'.97 E
	21° 01'.97 S	115° 58'.94 E	
	21° 02'.59 S	115° 58'.97 E	

**358 AUSTRALIA - WESTERN AUSTRALIA - Dampier - Mermaid Sound - Anchorage**

Pilbara Ports Authority Notice D9/2025

**Aus 57 [92/2025]**

Delete anchor berth and swinging circle, centred on 20° 27'.6 S 116° 44'.9 E

**359 AUSTRALIA - WESTERN AUSTRALIA - Esperance - Light beacon; light sectors; mooring buoy**

Southern Ports Notice 3/2025, 4/2025

**Aus 119 [290/2025]**

Delete light beacon 33° 51'.3 S 121° 54'.6 E

**Aus 119 (Esperance) [290/2025]**Insert lit yellow cylindrical mooring buoy, *Mo(U)Y.10s* 33° 51'.570 S 121° 54'.800 EDelete light sectors and legends emanating from light beacon 33° 51'.32 S 121° 54'.57 E  
light beacon 33° 51'.32 S 121° 54'.57 E**Aus 762 [290/2025]**

Delete light 33° 51'.3 S 121° 54'.6 E

**360 AUSTRALIA - WESTERN AUSTRALIA - Rottnest Island - Wreck**

Department of Transport WA Notice 6430/2025

**Aus 754 [324/2025]**Insert non-dangerous wreck with legend, *Rep (2025)* 32° 00'.53 S 115° 21'.15 E**361 AUSTRALIA - SOUTH AUSTRALIA - Waterwitch Channel to Orontes Bank - Scientific instruments**

Department for Infrastructure and Transport SA Notice 67(T)/2024

**Aus 120 [855/2024]**Insert special spar light buoy, *Fl.Y.2·5s*, without topmark 32° 21'.09 S 133° 38'.82 E**Aus 776 [856/2024]**Insert special spar light buoy, *Fl.Y.2·5s*, without topmark 34° 48'.60 S 136° 25'.80 E**Aus 781 [328/2025]**Insert special spar light buoy, *Fl.Y.2·5s*, without topmark 34° 40'.80 S 138° 00'.00 E**362 AUSTRALIA - VICTORIA - Port Albert Entrance - Light buoy**

Gippsland Ports Notice 198/2025

**Aus 181 [294/2025]**Move light buoy 38° 45'.3 S 146° 42'.4 E  
to 38° 45'.01 S 146° 42'.47 E**363 AUSTRALIA - VICTORIA - Port Phillip - Scientific instruments**

Ports Victoria Notice 210/2025

**Aus 143 [295/2025]**Insert special spar light buoy, *Fl.Y.2·5s*, without topmark 37° 59'.10 S 144° 46'.51 E  
special spar light buoy, *Fl.Y.2·5s*, without topmark 38° 03'.81 S 144° 52'.01 E**Aus 155 [296/2025]**Insert special spar light buoy, *Fl.Y.2·5s*, without topmark 37° 59'.100 S 144° 46'.512 E

**364 SOLOMON ISLANDS - Siota (Mboli) Harbour - Light beacon**  
Solomon Islands Maritime Authority Notice 7/2025

**SLB 201** [251/2025]

Amend light range to *5M*

9° 03'.3 S

160° 18'.2 E

**SLB 304** [251/2025]

Amend light range to *5M*

9° 03'.3 S

160° 18'.2 E

**365(T)/2025 AUSTRALIA - QUEENSLAND - Bowen - Port Denison - Light buoy off station**  
Maritime Safety Queensland Notice 145(T)/2025

The starboard lateral light buoy, *Fl.G.2-5s M7* (20° 01'.63 S 148° 15'.30 E), is off station.

Mariners are advised to navigate with caution in the area.

**Chart temporarily affected - Aus 268**

**366(T)/2025 AUSTRALIA - QUEENSLAND - Cape Clinton Peninsula - Survey operations**  
Maritime Safety Queensland Notice 159(T)/2025

An unmanned surface vehicle (USV) will be conducting survey operations in an area bounded by the coast and the following positions:

22° 39'.40 S 150° 48'.27 E  
22° 39'.40 S 150° 48'.80 E  
22° 33'.30 S 150° 48'.80 E  
22° 33'.30 S 150° 47'.47 E.

Tide gauges marked by a special light buoy, *Fl.Y.2s*, exist in position 22° 37'.8 S 150° 48'.1 E.

Mariners are advised to navigate with caution in the area.

**Chart temporarily affected - Aus 248 - Aus 820**

**367(T)/2025 AUSTRALIA - QUEENSLAND - Moreton Bay - Scarborough - Mooring buoy removed**  
*Former Notice - 736(T)/2022* is cancelled  
Maritime Safety Queensland

Cancel this notice on receipt.

**Chart formerly affected - Aus 236**

**368(T)/2025 AUSTRALIA - QUEENSLAND - Moreton Bay - Redcliffe - Harbour works completed**  
*Former Notice - 27(T)/2018* is cancelled  
Maritime Safety Queensland

Cancel this notice on receipt.

**Chart formerly affected - Aus 236**

**369(T)/2025 AUSTRALIA - QUEENSLAND - Moreton Bay - Redcliffe - Dredging operations**  
Maritime Safety Queensland Notice 162(T)/2025

Dredging operations are in progress at the head of Redcliffe Jetty (27° 13'.567 S 153° 07'.047 E).

All vessels will display appropriate lights and shapes and will monitor VHF Ch 13 and Ch 16.

Mariners are advised to navigate with caution in the area.

**Chart temporarily affected - Aus 236**

**370(T)/2025 AUSTRALIA - QUEENSLAND - Weipa - Light unlit**  
Maritime Safety Queensland

The light, *Fl.G.4s SC1* (12° 42'.23 S 141° 40'.04 E), is unlit.

Mariners are advised to navigate with caution in the area.

**Chart temporarily affected - Aus 4**

**371(T)/2025 AUSTRALIA - NORTHERN TERRITORY - Darwin - Scientific instruments**  
Northern Territory Government Notice 41(T)/2025

Special light buoys, *Fl. Y. 4s*, exist in positions 12° 29'.58 S 130° 54'.17 E and 12° 29'.72 S 130° 54'.32 E.

**Chart temporarily affected - Aus 26**

**372(T)/2025 AUSTRALIA - WESTERN AUSTRALIA - Dampier - Tidepole Island - Wreck**  
Pilbara Ports Authority Notice D8(T)/2025

A stranded wreck exists in position 20° 39'.02 S 116° 42'.48 E.

Mariners are advised to navigate with caution in the area.

**Chart temporarily affected - Aus 57 - Aus 60**

**373(T)/2025 AUSTRALIA - WESTERN AUSTRALIA - Dampier Archipelago - Roly Rock - Drill rig moved**  
*Former Notice - 262(T)/2025 is cancelled*  
*MODU Transocean Endurance*

Cancel this notice on receipt.

**Chart formerly affected - Aus 57 - Aus 327 - Aus 742**

**374(T)/2025 AUSTRALIA - WESTERN AUSTRALIA - Montebello Islands - Subsea operations northwestwards**  
Woodside Energy Ltd

On or about 11 May 2025, vessels *Deep Orient* and *Normand Saracen* will be conducting subsea installation activities and anchor pre-lay activities in an area bounded by the following positions:

20° 00'.15 S 115° 12'.74 E

20° 02'.13 S 115° 13'.89 E

20° 10'.34 S 115° 01'.72 E

20° 06'.93 S 115° 00'.40 E

20° 03'.46 S 115° 03'.60 E.

Mariners are advised to navigate with caution in the area.

**Chart temporarily affected - Aus 328 - Aus 742**

**375(T)/2025 AUSTRALIA - VICTORIA - Ninety Mile Beach - Safety zone eastwards**  
NOPSEMA

A 500m radius safety zone exists centred on position 38° 11'.81 S 148° 33'.79 E.

**Chart temporarily affected - Aus 357**

**376(T)/2025 AUSTRALIA - VICTORIA - Ninety Mile Beach - Survey operations completed**  
*Former Notice - 191(T)/2025 is cancelled*  
Orsted , Australian Maritime Safety Authority

Cancel this notice on receipt.

**Chart formerly affected - Aus 357 - Aus 487 - Aus 802**

**377(T)/2025 AUSTRALIA - VICTORIA - Port Campbell - Survey operations southwestwards**  
Amplitude Energy

Vessel *Pacific Crest* is conducting survey operations in an area bounded by the following positions:

38° 56'.2 S 142° 46'.1 E  
38° 44'.2 S 142° 59'.7 E  
38° 34'.5 S 142° 41'.3 E  
38° 46'.7 S 142° 27'.2 E.

Mariners are advised to navigate with caution in the area.

**Chart temporarily affected - Aus 349**

**378(T)/2025 AUSTRALIA - VICTORIA - Port Phillip - Point Cole - Light beacon restored**

*Former Notice* - 311(T)/2025 is cancelled  
Parks Victoria Notice 209(T)/2025

Cancel this notice on receipt.

**Chart formerly affected - Aus 155**

**379(T)/2025 AUSTRALIA - VICTORIA - Port Phillip - South Channel - Light beacon destroyed**

Ports Victoria Notice 205(T)/2025

The north cardinal light beacon, *Q.9m 9M* (38° 17'.70 S 144° 41'.15 E), has been destroyed; a north cardinal virtual AIS and a north cardinal light buoy, exist in situ.

**Chart temporarily affected - Aus 143 - Aus 144 - Aus 4709 (INT 709)**

**380(T)/2025 AUSTRALIA - VICTORIA - Port Phillip - Scientific instruments recovered**

*Former Notice* - 834(T)/2023 is cancelled  
Ports Victoria Notice 210/2025

Cancel this notice on receipt.

**Chart formerly affected - Aus 143 - Aus 155 - Aus 157**

**381(T)/2025 AUSTRALIA - VICTORIA - Western Port - Bagge Harbour - Crawfish Rock - Light beacon relit**

*Former Notice* - 314(T)/2025 is cancelled  
Parks Victoria Notice 206(T)/2025

Cancel this notice on receipt.

**Chart formerly affected - Aus 151**

**382(T)/2025 SOLOMON ISLANDS - Florida Islands - Nggela Sule - Tuituhi Point - Light beacon relit**

*Former Notice* - 726(T)/2024 is cancelled  
Solomon Islands Maritime Authority Notice 6/2025

Cancel this notice on receipt.

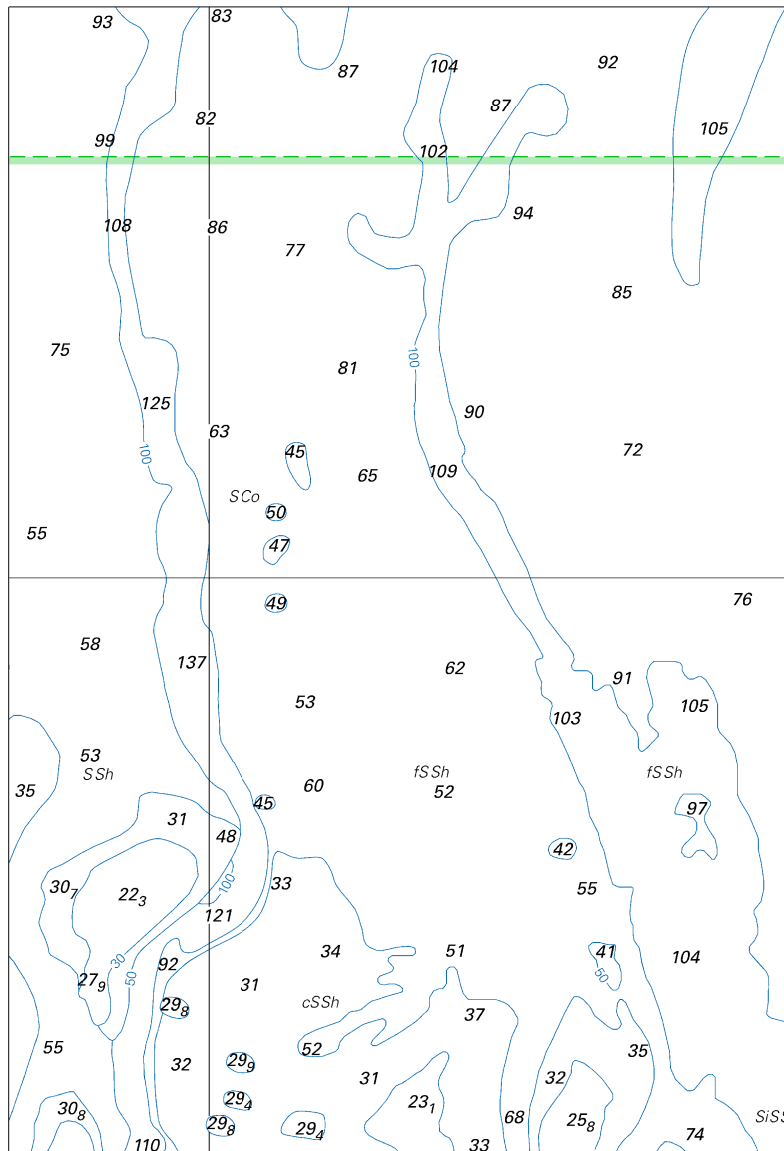
**Chart formerly affected - SLB 201 - SLB 304**

II

**HYDROGRAPHIC REPORTS**

NIL

To accompany Australian Notice to Mariners 355/2025

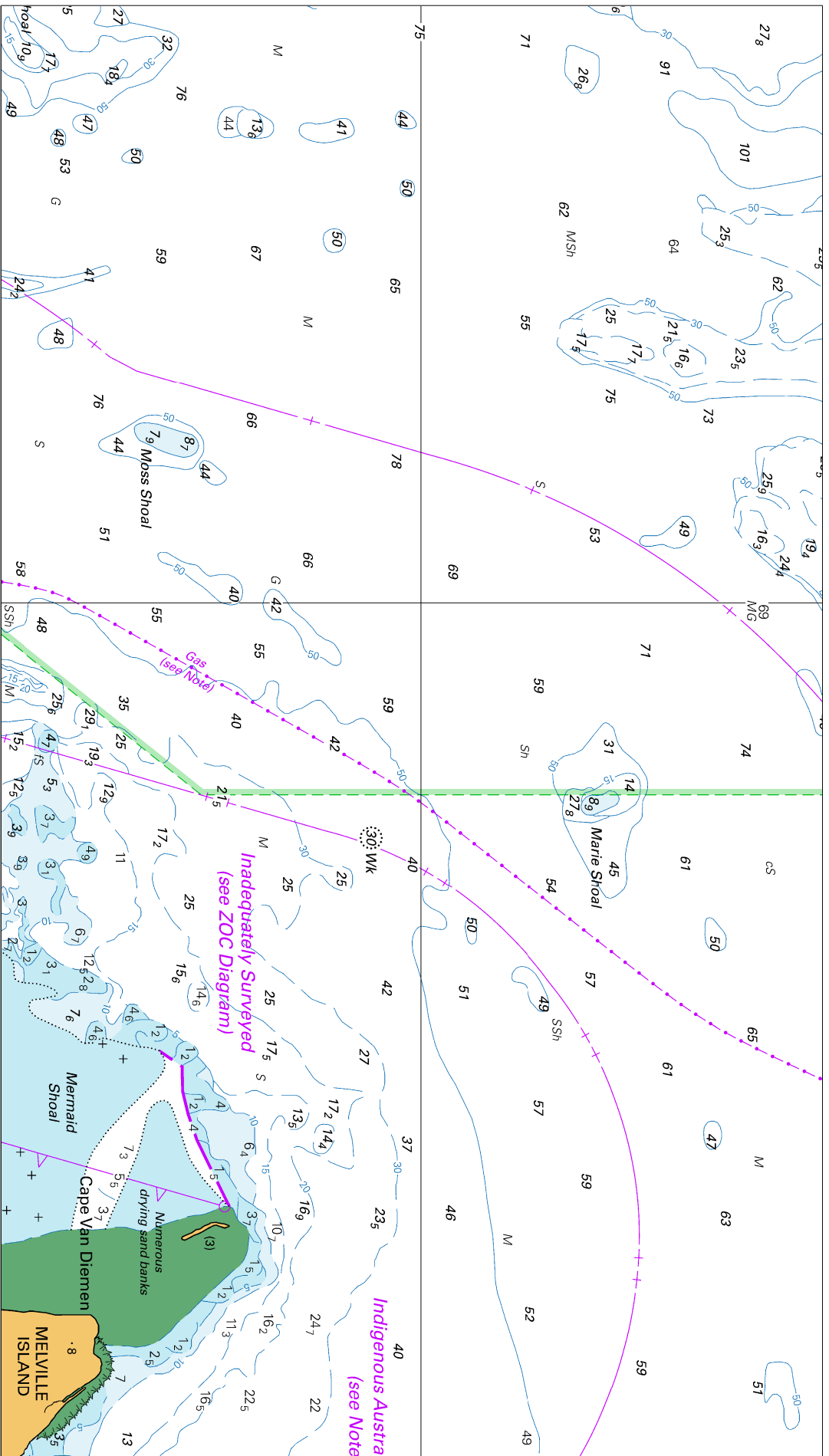


Block A for chart Aus 310

(103.6 x 151.9mm)

© Commonwealth of Australia 2025

To accompany Australian Notice to Mariners 355/2025

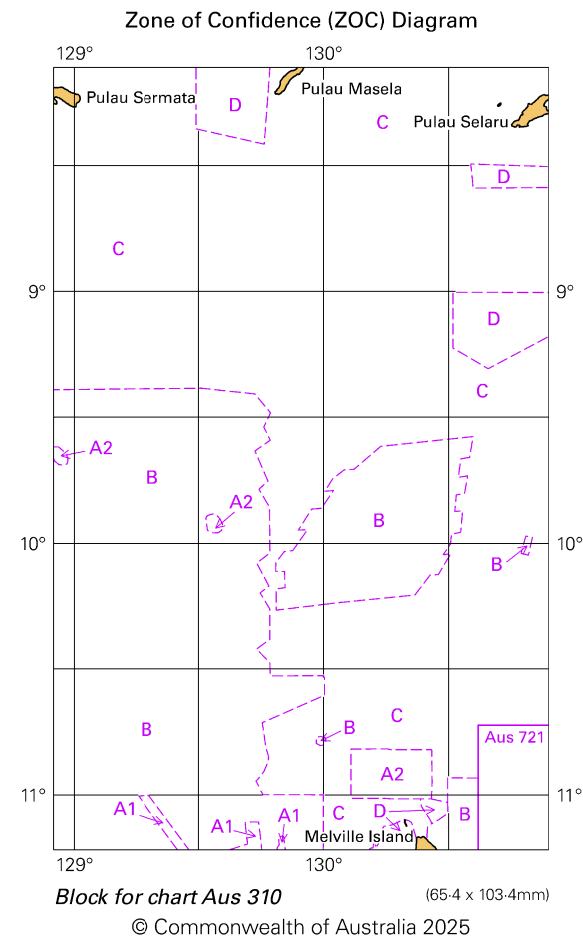


Block B for chart Aus 310

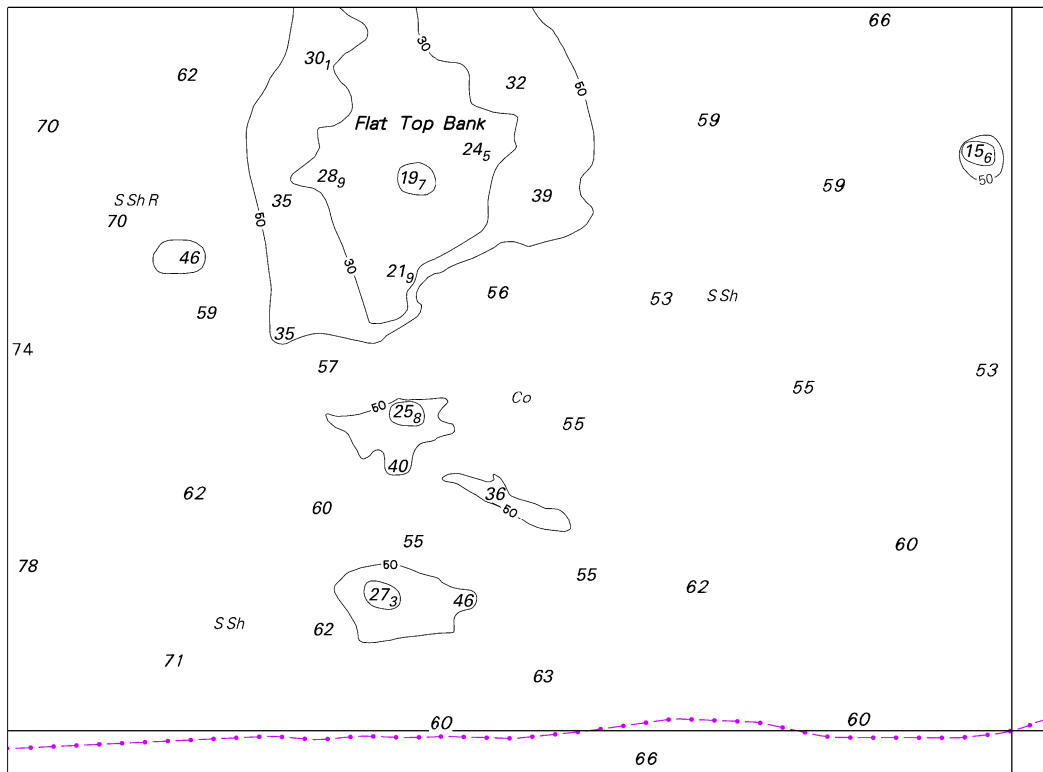
© Commonwealth of Australia 2025

(250 x 141.9mm)

To accompany Australian Notice to Mariners 355/2025



To accompany Australian Notice to Mariners 356/2025

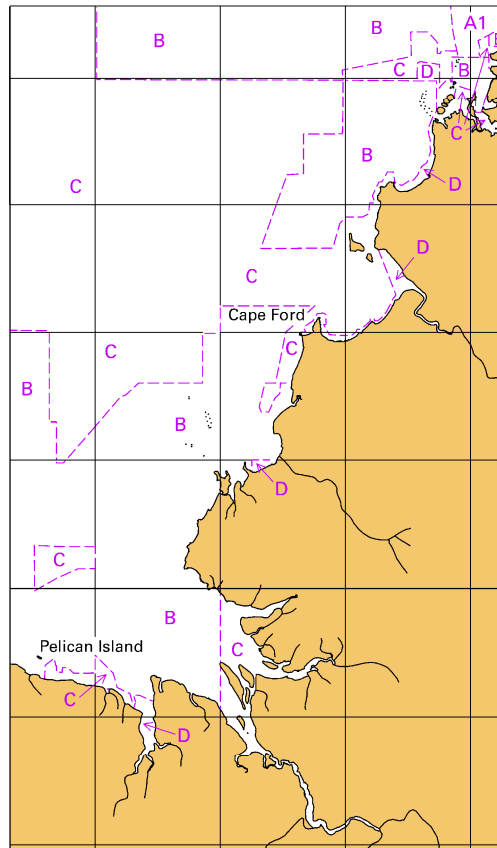


Block for chart Aus 316

© Commonwealth of Australia 2025

(137.7 x 101.2mm)

To accompany Australian Notice to Mariners 356/2025



Block for chart Aus 316

(65.3 x 111.7mm)

© Commonwealth of Australia 2025