



AUSTRALIAN NOTICES TO MARINERS

Notices 944 - 1021



*The Hydrographer and Staff of the Australian Hydrographic Office
wish all users of Australian Navigational Products a Merry Christmas,
a Happy New Year and safe, successful voyages in 2025.*



Published fortnightly by the Australian Hydrographic Office

Australian Notices to Mariners are the authority for correcting charts and publications published by the Australian Hydrographic Office covering Australia, Papua New Guinea, Solomon Islands, Australian Antarctic Territory and Timor-Leste.

Commodore R.L. PHILLIPS RAN
Hydrographer of Australia

SECTIONS.

- I. **Australian Notices to Mariners, including blocks and notes.**
- II. **Hydrographic Reports.**

SUPPLEMENTS.

- I. **Tracings**
- II. **Cumulative List of Australian Notices to Mariners.**
- III. **Cumulative List of Temporary and Preliminary Australian Notices to Mariners.**
- IV. **Temporary and Preliminary Notices in force.**

© Commonwealth of Australia 2024

This work is copyright. Apart from any use permitted under the Copyright Act 1968, no part may be reproduced by any process, adapted, communicated or commercially exploited without prior written permission from The Commonwealth represented by the Australian Hydrographic Office.

IMPORTANT NOTICE

This edition of Notices to Mariners includes all significant information affecting AHO products which the AHO has become aware of since the last edition. All reasonable efforts have been made to ensure the accuracy and completeness of the information, including third party information, on which these updates are based. The AHO regards third parties from which it receives information as reliable, however the AHO cannot verify all such information and errors may therefore exist. The AHO does not accept liability for errors in third party information.

GENERAL INSTRUCTIONS

The substance of these notices should be inserted on the charts affected.

Bearings are referred to the true compass and are reckoned clockwise from North; those relating to lights are given as seen by an observer from seaward.

Positions quoted in notices relate to WGS84 which is the horizontal datum for all charts produced by the Australian Hydrographic Office.

The range quoted for a light is its nominal range.

Depths are with reference to the chart datum of each chart. Heights are above mean high water springs or mean higher high water, as appropriate.

The capital letter (P) or (T) after the number of any notice denotes a preliminary or temporary notice respectively, which are contained separately at the end of the permanent notices.

REPORTING OF DANGERS

Mariners are particularly requested to notify the AUSTRALIAN HYDROGRAPHIC OFFICE, Locked Bag 8801 Wollongong, NSW 2500 (e-mail datacentre@hydro.gov.au or, alternatively by filling in and submitting the [Hydrographic Notes](#) forms located on the web site – www.hydro.gov.au), immediately on the discovery of new dangers or suspected dangers to navigation. For changes or defects in aids to navigation notify AusSAR (Fax 02-6230 6868 or email rccaus@amsa.gov.au).

AUTHORISED USE

Copies of Australian notices are available free of charge from the Australian Hydrographic Office (AHO) website (www.hydro.gov.au) and through the eNotices (email) service (www.hydro.gov.au/enotices/enotices.htm).

Individual Notices may be copied for the purpose of inserting Notice substance on official charts and publications. Paper copies may be printed by chart agents and distributed to customers on a cost recovery basis. Participating chart agents are listed on the AHO website as providing a 'Paper Notices to Mariners' service (www.hydro.gov.au/prodserv/agents-list.htm). Copies of the notices may not be sold for profit without prior written agreement.

NUMERICAL INDEX OF NOTICES TO MARINERS

Edition No 25

Notices	Aus Chart, INT Chart, ENC Cell, AHP, BA Pubs
944	Products - New Charts, New Editions, Withdrawn Charts
945	Products - New Charts and New Editions to be published shortly
946	Aus 200
947	Aus 200
948	Aus 195
949	Aus 814, 816, 817, 4602, INT 602
950	Aus 301
951	Aus 323
952	Aus 730
953	Aus 112
954	Aus 332
955	Aus 55, 326
956	Aus 331
957	Aus 777, 778
958	Aus 181
959	Aus 155
960	Aus 143
961	Aus 171
962	SLB 102, 302
963(T)	Aus 195, 198, 489, 808
964(T)	Aus 812, 813, 4602, INT 602
965(T)	Aus 806
966(T)	Aus 200
967(T)	Aus 192
968(T)	Aus 4603, INT 603
969(T)	Aus 615
970(T)	Aus 250
971(T)	Aus 249
972(T)	Aus 250
973(T)	Aus 236
974(T)	Aus 611, 612
975(T)	Aus 377
976(T)	Aus 315, 316
977(T)	Aus 328
978(T)	Aus 328
979(T)	Aus 318, 319, 728
980(T)	Aus 328, 329, 744, 745
981(T)	Aus 116
982(T)	Aus 754, 755
983(T)	Aus 57, 4603, INT 603
984(T)	Aus 57
985(T)	Aus 57, 327
986(T)	Aus 327, 328, 742
987(P)	Aus 45
988(T)	Aus 112
989(T)	Aus 754
990(T)	Aus 332
991(T)	Aus 318
992(T)	Aus 753
993(T)	Aus 732, 733
994(T)	Aus 325
995(T)	Aus 328, 329
996(T)	Aus 335
997(T)	Aus 64
998(T)	Aus 332, 752
999(P)	Aus 55, 326
1000(T)	Aus 777
1001(T)	Aus 778
1002(T)	Aus 157
1003(T)	Aus 357, 487
1004(T)	Aus 349
1005(T)	Aus 143
1006(T)	Aus 155
1007(T)	Aus 143, 155
1008(T)	Aus 157

Notices	Aus Chart, INT Chart, ENC Cell, AHP, BA Pubs
1009(T)	Aus 155
1010(T)	Aus 155
1011(T)	Aus 155
1012(T)	Aus 140
1013(T)	Aus 140, 349
1014(T)	Aus 151, 801, 4709, INT 709
1015(T)	Aus 179, 487, 798, 800
1016(T)	Aus 766, 797
1017(T)	Aus 766, 797
1018(T)	Aus 164
1019(T)	Aus 171, 174
1020(T)	Aus 163, 164, 167, 487, 790, 798, 800
1021(T)	SLB 104

NUMERICAL INDEX OF CHARTS AFFECTED

Edition No 25

Aus Chart	Notices
Aus 45	987(P)
Aus 55	955, 999(P)
Aus 57	983(T), 984(T), 985(T)
Aus 64	997(T)
Aus 112	953, 988(T)
Aus 116	981(T)
Aus 140	1012(T), 1013(T)
Aus 143	960, 1005(T), 1007(T)
Aus 151	1014(T)
Aus 155	959, 1006(T), 1007(T), 1009(T), 1010(T), 1011(T)
Aus 157	1002(T), 1008(T)
Aus 163	1020(T)
Aus 164	1018(T), 1020(T)
Aus 167	1020(T)
Aus 171	961, 1019(T)
Aus 174	1019(T)
Aus 179	1015(T)
Aus 181	958
Aus 192	967(T)
Aus 195	948, 963(T)
Aus 198	963(T)
Aus 200	946, 947, 966(T)
Aus 236	973(T)
Aus 249	971(T)
Aus 250	970(T), 972(T)
Aus 301	950
Aus 315	976(T)
Aus 316	976(T)
Aus 318	979(T), 991(T)
Aus 319	979(T)
Aus 323	951
Aus 325	994(T)
Aus 326	955, 999(P)
Aus 327	985(T), 986(T)
Aus 328	977(T), 978(T), 980(T), 986(T), 995(T)
Aus 329	980(T), 995(T)
Aus 331	956
Aus 332	954, 990(T), 998(T)
Aus 335	996(T)
Aus 349	1004(T), 1013(T)
Aus 357	1003(T)
Aus 377	975(T)
Aus 487	1003(T), 1015(T), 1020(T)
Aus 489	963(T)
Aus 611	974(T)
Aus 612	974(T)
Aus 615	969(T)
Aus 728	979(T)
Aus 730	952
Aus 732	993(T)
Aus 733	993(T)
Aus 742	986(T)
Aus 744	980(T)
Aus 745	980(T)

Aus Chart	Notices
Aus 752	998(T)
Aus 753	992(T)
Aus 754	982(T), 989(T)
Aus 755	982(T)
Aus 766	1016(T), 1017(T)
Aus 777	957, 1000(T)
Aus 778	957, 1001(T)
Aus 790	1020(T)
Aus 797	1016(T), 1017(T)
Aus 798	1015(T), 1020(T)
Aus 800	1015(T), 1020(T)
Aus 801	1014(T)
Aus 806	965(T)
Aus 808	963(T)
Aus 812	964(T)
Aus 813	964(T)
Aus 814	949
Aus 816	949
Aus 817	949
Aus 4602	949, 964(T)
Aus 4603	968(T), 983(T)
Aus 4709	1014(T)
SLB 102	962
SLB 104	1021(T)
SLB 302	962

INT Chart	Notices
INT 602	949, 964(T)
INT 603	968(T), 983(T)
INT 709	1014(T)

944 AUSTRALIA - Products - New Charts, New Editions, Withdrawn Charts

Australian Hydrographic Office , UKHO

New Charts

<i>Chart</i>	<i>Title and Geographical limits</i>	<i>Scale</i>	<i>Publication Date</i>	<i>Remarks</i>
NIL				

New Electronic Navigation Chart (Aus ENC)

<i>Cell Name</i>	<i>Title</i>	<i>Publication Date</i>	<i>Remarks</i>
NIL			

New Editions and Withdrawn Charts

<i>Chart</i>	<i>Title</i>	<i>Scale</i>	<i>Publication Date</i>	<i>Remarks</i>
Aus 117 (Edition 9)	Australia - West Coast - Western Australia - Gage Roads and Cockburn Sound	1:25 000	6/12/2024	New edition with general updating throughout; including new bathymetric data. Chart Aus 117 Edition 8 dated 4 March 2022 is now superseded and must be withdrawn from use.
Aus 236 (Edition 9)	Australia - East Coast - Queensland - Moreton Bay	1:80 000	6/12/2024	New edition with general updating throughout; including new bathymetric data. Chart Aus 236 Edition 8 dated 12 April 2024 is now superseded and must be withdrawn from use.
Aus 449 (Edition 2)	Australian Antarctic Territory - Magnet Bay to Cape Rouse	1:500 000	6/12/2024	New edition with general updating throughout; including new bathymetric data. Chart Aus 449 Edition 1 dated 10 September 1993 is now superseded and must be withdrawn from use.
Aus 815 (Edition 3)	Australia East Coast - Queensland - Cape Moreton to Double Island Point	1:150 000	6/12/2024	New edition with general updating throughout; including new bathymetric data. Chart Aus 815 Edition 2 dated 28 October 2022 is now superseded and must be withdrawn from use.

Admiralty publication

<i>NP No</i>	<i>Title</i>	<i>Date</i>	<i>Remarks</i>
NP283(2)	ADMIRALTY List of Radio Signals Maritime Safety Information Services The Americas, Far East and Oceania Volume 3(2) 5th Edition (2024).	5/12/2024	The 4th Edition (2023) is cancelled.

944 AUSTRALIA - Products - New Charts, New Editions, Withdrawn Charts**Chart permanently withdrawn**

Charts listed above as withdrawn no longer meet chart carriage requirements and should be marked as "superseded" and replaced with the new chart/ new edition listed prior to passage through the area covered by the new chart.

When placing orders with a chart agent between notice of forthcoming edition and its publication, mariners should advise whether their order pertains to the current edition or the new edition.

For further details refer to the AHO website at www.hydro.gov.au for new edition and new chart stock arrival information.

945 AUSTRALIA - Products - New Charts and New Editions to be published shortly

Australian Hydrographic Office

New Charts to be published shortly

Chart	Title	Scale	Remarks
NIL			

New Editions to be published shortly

Chart	Title	Scale	Remarks
NIL			

946 AUSTRALIA - NEW SOUTH WALES - Port Jackson - Sydney Harbour - Nav aids

Transport for NSW

Aus 200 [839/2024]

Replace	beacon with port lateral spar buoy without topmark	33° 51'.42 S	151° 16'.00 E
Amend	light beacon to <i>VQ(6)+LFl. 10s</i>	33° 51'.61 S	151° 15'.53 E
Move	obelisk	33° 49'.79 S	151° 15'.59 E
	to	33° 49'.785 S	151° 15'.566 E
	mooring buoy	33° 50'.53 S	151° 16'.63 E
	to	33° 50'.597 S	151° 16'.655 E

947 AUSTRALIA - NEW SOUTH WALES - Port Jackson - McMahons Point - Light beacon

Transport for NSW

Aus 200 [946/2024]

Insert	starboard lateral light beacon, <i>Fl.G.3s</i> , without topmark	33° 50'.942 S	151° 12'.402 E
--------	--	---------------	----------------

948 AUSTRALIA - NEW SOUTH WALES - Port Kembla - ZOC diagram

Port Authority of New South Wales

Aus 195 [893/2024]

Insert	magenta dashed line, between	34° 21'.922 S	150° 53'.578 E
		34° 21'.849 S	150° 53'.636 E
		34° 21'.880 S	150° 53'.694 E
		34° 21'.922 S	150° 53'.662 E
Delete	magenta dashed line, between	34° 21'.92 S	150° 53'.58 E
		34° 21'.92 S	150° 53'.66 E

949 AUSTRALIA - QUEENSLAND - Cape Moreton to Hook Point - Depths

UKHO , Department of Defence

Aus 814 [700/2024]Insert [accompanying block](#) 26° 57'.0 S 153° 29'.8 E**Aus 816 [599/2023]**Insert [accompanying block](#) 25° 44'.0 S 153° 09'.0 E**Aus 817 [841/2024]**Insert [accompanying block](#) 25° 46'.0 S 153° 03'.5 E**Aus 4602 (INT 602) [703/2024]**Replace depth, 22₆m, with depth, 23m 26° 30'.0 S 153° 32'.0 E**950 AUSTRALIA - QUEENSLAND - Skardon River - Moorings; depths**

Maritime Safety Queensland

Aus 301 [NE 25/10/2024]Insert [accompanying block A](#) 11° 51'.2 S 141° 50'.6 E**Aus 301 (Skardon River) [NE 25/10/2024]**Insert [accompanying block B](#) 11° 47'.0 S 141° 56'.0 E**951 AUSTRALIA - WESTERN AUSTRALIA - Cape Leveque - Depths westwards**

Department of Defence

Aus 323 [897/2024]Insert [accompanying block](#) 16° 26'.0 S 122° 49'.0 E
[accompanying ZOC diagram](#) 17° 04'.0 S 122° 59'.0 E**952 AUSTRALIA - WESTERN AUSTRALIA - Commerson Island to Kannamatju Island - Obstructions; rock**

European Space Agency

Aus 730 [NE 19/1/2024]Insert rock which covers and uncovers enclosed by danger circle, centred on 15° 08'.88 S 124° 39'.09 E
danger circle with legend, *Obstrn*, centred on 15° 12'.12 S 124° 28'.10 E
danger circle with legend, *Obstrn*, centred on 15° 27'.38 S 124° 28'.21 E

Delete depth, 21m 15° 12'.0 S 124° 28'.1 E

953 AUSTRALIA - WESTERN AUSTRALIA - Fremantle - Deepwater Channel - Light buoy

Department of Transport WA

Aus 112 [775/2024]

Delete light buoy 31° 58'.97 S 115° 41'.40 E

954 AUSTRALIA - WESTERN AUSTRALIA - Houtman Abrolhos - Fish aggregating devices

Department of Primary Industries and Regional Development WA

Aus 332 [849/2024]Delete light buoy 28° 29'.7 S 113° 27'.0 E
light buoy 28° 51'.5 S 114° 29'.3 E

955 AUSTRALIA - WESTERN AUSTRALIA - Port Walcott - Wreck

Discovery Marine

Aus 55 [814/2024]Insert depth, 12₃m, enclosed by danger circle with legend, *Wk* 20° 29'.46 S 117° 24'.92 E

Delete wreck 20° 29'.6 S 117° 25'.0 E

Aus 326 [671/2024]Replace safe clearance wreck depth, 5m, with wreck depth, 12₃m 20° 29'.5 S 117° 24'.9 E**956 AUSTRALIA - WESTERN AUSTRALIA - Shark Bay - Denham Sound - Scientific instrument**

The University of Western Australia

Aus 331 [848/2024]Move light buoy 25° 28'.2 S 113° 06'.6 E
to 25° 29'.60 S 113° 05'.75 E**957 AUSTRALIA - SOUTH AUSTRALIA - Point Riley - Prohibited anchorage, anchorages, harbour limit, chart note**

Telstra

Note: position of existing chart notes may vary on certain charts.**Aus 777 [652/2023]**Insert accompanying block A 33° 44'.0 S 137° 17'.5 E
accompanying block B 33° 50'.0 S 137° 31'.4 E

Delete chart note, CABLES 34° 24'.4 S 137° 34'.7 E

Aus 778 [554/2024]Insert accompanying block A 33° 44'.0 S 137° 19'.0 E
accompanying block B 33° 47'.5 S 137° 35'.0 E

Delete chart note, CABLES 33° 46'.5 S 138° 00'.0 E

958 AUSTRALIA - VICTORIA - Corner Inlet - Toora Channel - Nav aids*Former Notice - 725(T)/2024 is cancelled*

Gippsland Ports Notice 519/2024

Aus 181 [594/2024]Replace light beacon with port lateral cylindrical light buoy, *Fl.R.4s No6*, without topmark 38° 43'.9 S 146° 22'.8 E**959 AUSTRALIA - VICTORIA - Port Phillip - Hobsons Bay - Artificial reef**

Parks Victoria Notice 482/2024

Aus 155 [737/2024]Insert fish haven with minimum depth, 2₃m, centred on 37° 51'.37 S 144° 56'.81 E**960 AUSTRALIA - VICTORIA - Port Phillip - Dromana Bay - Light buoys westwards**

Ports Victoria Notice 524/2024

Aus 143 [675/2024]Insert special conical light buoy, *Fl(2)Y.15s SB1*, without topmark 38° 17'.93 S 144° 56'.60 E
special conical light buoy, *Fl(2)Y.15s SB2*, without topmark 38° 20'.01 S 144° 55'.15 E

961 AUSTRALIA - TASMANIA - Blackman Bay - Nav aids

Marine and Safety Tasmania Notice M401/2024

Aus 171 [858/2024]

Insert	port lateral light beacon, <i>Fl.R.2s</i> , with topmark	42° 51'.02 S	147° 52'.44 E
	starboard lateral light beacon, <i>Iso.G.4s</i> , with topmark	42° 52'.33 S	147° 51'.44 E
Replace	beacon with port lateral light beacon, <i>Fl.R.4s</i> , with topmark	42° 50'.9 S	147° 52'.5 E
	beacon with starboard lateral light beacon, <i>Fl.G.2s</i> , with topmark	42° 51'.3 S	147° 52'.3 E
	beacon with port lateral light beacon, <i>Fl.R.5s</i> , with topmark	42° 51'.6 S	147° 52'.2 E
Delete	depth, 3 ₃ m	42° 51'.0 S	147° 52'.4 E
	beacon	42° 51'.1 S	147° 52'.5 E
	beacon	42° 52'.3 S	147° 51'.5 E

962 SOLOMON ISLANDS - Port Noro to Sosomboeke Island - Light beacons

UKHO

SLB 102 (Port Noro) [899/2024]

Amend	light beacon to <i>Fl.G.2·5s 8m 4M</i>	8° 15'.31 S	157° 11'.36 E
-------	--	-------------	---------------

SLB 102 (Blackett Strait) [899/2024]

Amend	light beacon to <i>Fl(2)15s 10m 10M</i>	8° 08'.3 S	157° 09'.6 E
	light beacon to <i>Fl.G.2·5s 8m 4M</i>	8° 15'.3 S	157° 11'.4 E

SLB 302 [657/2023]

Amend	light beacon to <i>Fl(2)15s 10m 10M</i>	8° 08'.3 S	157° 09'.6 E
-------	---	------------	--------------

963(T)/2024 AUSTRALIA - NEW SOUTH WALES - Botany Bay to Port Kembla - Survey operations

Ocean Infinity Pty Ltd

On or about 16 December 2024, vessel 7 *Oceans* will be conducting survey operations in an area bounded by the following positions:

34° 00'.06 S 151° 19'.10 E
 34° 00'.11 S 151° 36'.84 E
 34° 36'.15 S 151° 13'.71 E
 34° 36'.15 S 151° 04'.95 E
 34° 33'.18 S 150° 55'.24 E
 34° 13'.50 S 151° 00'.65 E
 34° 03'.45 S 151° 12'.06 E.

Subsurface scientific instruments exist on the seabed in the following positions:

33° 59'.5 S 151° 19'.3 E
 33° 59'.5 S 151° 30'.4 E
 34° 08'.3 S 151° 23'.9 E
 34° 09'.3 S 151° 08'.3 E
 34° 16'.6 S 151° 16'.3 E
 34° 19'.0 S 150° 57'.9 E
 34° 26'.9 S 151° 11'.7 E
 34° 31'.2 S 150° 55'.4 E
 34° 36'.9 S 151° 07'.0 E.

Two moorings will be deployed at each of the subsurface locations within 200m of the position. Special light buoys may exist in the vicinity of the above positions.

Mariners are advised to navigate with caution in the area.

Chart temporarily affected - Aus 195 - Aus 198 - Aus 489 - Aus 808

964(T)/2024 AUSTRALIA - NEW SOUTH WALES - Clarence Head - Live firing completed eastwards

Former Notice - 859(T)/2024 is cancelled

Department of Defence

Cancel this notice on receipt.

Chart formerly affected - Aus 812 - Aus 813 - Aus 4602 (INT 602)

965(T)/2024 AUSTRALIA - NEW SOUTH WALES - Eden - Fish aggregating device off station northeastwards

Department of Primary Industries and Regional Development

The special light buoy, *Fl.Y.5s (Nov-May)* (36° 58'.79 S 150° 14'.73 E), is off station and in position 37° 00'.52 S 150° 15'.11 E.

Chart temporarily affected - Aus 806

966(T)/2024 AUSTRALIA - NEW SOUTH WALES - Port Jackson - Balls Head - Drilling operations completed

Former Notice - 855(T)/2023 is cancelled

Port Authority of New South Wales

Cancel this notice on receipt.

Chart formerly affected - Aus 200

967(T)/2024 AUSTRALIA - NEW SOUTH WALES - Twofold Bay - Eden - Snug Cove - Wave attenuator chartered

Former Notice - 1050(P)/2023 is cancelled

Port Authority of New South Wales

Cancel this notice on receipt.

Chart formerly affected - Aus 192

968(T)/2024 AUSTRALIA - QUEENSLAND - Duyfken Point - Scientific instrument westwards
Maritime Safety Queensland Notice 578(T)/2024

A special light buoy, *Fl(5)Y.20s*, exists in position 12° 10'.16 S 140° 16'.80 E.

Chart temporarily affected - Aus 4603 (INT 603)

969(T)/2024 AUSTRALIA - QUEENSLAND - Flinders Reef - Shoaling charted
Former Notice - 782(P)/2018 is cancelled
LADS Flight

Cancel this notice on receipt.

Chart formerly affected - Aus 615

970(T)/2024 AUSTRALIA - QUEENSLAND - Hay Point - Obstruction; light buoy removed
Former Notice - 613(T)/2023 is cancelled
Maritime Safety Queensland

Cancel this notice on receipt.

Chart formerly affected - Aus 250

971(T)/2024 AUSTRALIA - QUEENSLAND - Mackay - Pioneer River - Wreck
Maritime Safety Queensland Notice 577(T)/2024

A stranded wreck exists in position 21° 09'.09 S 149° 13'.30 E.

Mariners are advised to navigate with caution in the area.

Chart temporarily affected - Aus 249

972(T)/2024 AUSTRALIA - QUEENSLAND - Mackay - Obstruction; light buoy removed
Former Notice - 614(T)/2023 is cancelled
Maritime Safety Queensland

Cancel this notice on receipt.

Chart formerly affected - Aus 250

973(T)/2024 AUSTRALIA - QUEENSLAND - Moreton Bay - Spitfire Channel - Buoy
Maritime Safety Queensland Notice 584(T)/2024

An orange buoy marking an underwater obstruction exists in position 27° 03'.60 S 153° 17'.28 E.

Mariners are advised to navigate with caution in the area.

Chart temporarily affected - Aus 236

974(T)/2024 AUSTRALIA - CORAL SEA - Kenn Reefs and Frederick Reefs - Shoaling charted
Former Notice - 494(P)/2019 is cancelled
LADS Flight

Cancel this notice on receipt.

Chart formerly affected - Aus 611 - Aus 612

975(T)/2024 AUSTRALIA - CORAL SEA - Portlock Reefs - Reefs charted

Former Notice - 989(P)/2017 is cancelled
LADS Flight

Cancel this notice on receipt.

Chart formerly affected - Aus 377**976(T)/2024 AUSTRALIA - TIMOR SEA - Flat Top Bank - Drill rig moved southwestwards**

Former Notice - 492(T)/2024 is cancelled
Eni Australia Ltd , INPEX

Cancel this notice on receipt.

Chart formerly affected - Aus 315 - Aus 316**977(T)/2024 AUSTRALIA - WESTERN AUSTRALIA - Barrow Island - Subsea operations northwestwards**

Monson Offshore

On or about 12 December 2024, vessel *JSD6000* will be conducting subsea operations in the vicinity of positions 19° 48'.63 S 114° 37'.38 E and 19° 52'.73 S 114° 36'.48 E.

Mariners are advised to navigate with caution in the area. 500m clearance requested.

Chart temporarily affected - Aus 328**978(T)/2024 AUSTRALIA - WESTERN AUSTRALIA - Barrow Island - Scientific instrument northwestwards**

Fugro

A special light buoy, *Fl(5)Y.20s*, exists in position 19° 51'.33 S 114° 35'.48 E.

Chart temporarily affected - Aus 328**979(T)/2024 AUSTRALIA - WESTERN AUSTRALIA - Bougainville Peninsula - Cape Bougainville - Rock charted**

Former Notice - 296(P)/2024 is cancelled
Department of Primary Industries and Regional Development WA

Cancel this notice on receipt.

Chart formerly affected - Aus 318 - Aus 319 - Aus 728**980(T)/2024 AUSTRALIA - WESTERN AUSTRALIA - Bundegi Reef - Scientific instrument recovered**

Former Notice - 287(T)/2022 is cancelled
Department of Transport WA

Cancel this notice on receipt.

Chart formerly affected - Aus 328 - Aus 329 - Aus 744 - Aus 745**981(T)/2024 AUSTRALIA - WESTERN AUSTRALIA - Cape Leeuwin - Historic wreck charted southwards**

Former Notice - 978(P)/2023 is cancelled
Australian Hydrographic Office

Cancel this notice on receipt.

Chart formerly affected - Aus 116

982(T)/2024 AUSTRALIA - WESTERN AUSTRALIA - Cape Leschenault to Cape Bouvard - Fish aggregating devices westwards

Department of Primary Industries and Regional Development WA

The special light buoy, *Fl. Y. 5s FAD (Oct-Apr)* (31° 15'.13 S 115° 01'.54 E), has been temporarily relocated to position 31° 16'.57 S 115° 01'.63 E.

The special light buoy, *Fl. Y. 5s FAD (Oct-Apr)* (32° 21'.56 S 115° 03'.76 E), has been temporarily relocated to position 32° 17'.56 S 115° 05'.64 E.

The special light buoy, *Fl. Y. 5s FAD (Oct-Apr)* (32° 37'.64 S 115° 01'.73 E), has been temporarily relocated to position 32° 33'.25 S 115° 03'.40 E.

Chart temporarily affected - Aus 754 - Aus 755

983(T)/2024 AUSTRALIA - WESTERN AUSTRALIA - Dampier - Enderby Island - Ship to ship transfer complete

Former Notice - 416(T)/2024 is cancelled

Monson Offshore

Cancel this notice on receipt.

Chart formerly affected - Aus 57 - Aus 4603 (INT 603)

984(T)/2024 AUSTRALIA - WESTERN AUSTRALIA - Dampier - Malus Islands - Ship to ship transfer completed

Former Notice - 162(T)/2024 is cancelled

Pilbara Ports Authority

Cancel this notice on receipt.

Chart formerly affected - Aus 57

985(T)/2024 AUSTRALIA - WESTERN AUSTRALIA - Dampier Archipelago - Dolphin Island - Scientific instrument recovered eastwards

Former Notice - 494(T)/2024 is cancelled

Department of Transport WA

Cancel this notice on receipt.

Chart formerly affected - Aus 57 - Aus 327

986(T)/2024 AUSTRALIA - WESTERN AUSTRALIA - Dampier Archipelago - Well plug and abandonment works completed northwestwards

Former Notice - 718(T)/2024 is cancelled

Australian Maritime Safety Authority

Cancel this notice on receipt.

Chart formerly affected - Aus 327 - Aus 328 - Aus 742

987(P)/2024 AUSTRALIA - WESTERN AUSTRALIA - Derby - Shoaling

Department of Transport WA

Latest survey indicates shoaler depths than those charted may exist in an area bounded by the following positions:

17° 16'.19 S 123° 35'.73 E

17° 16'.92 S 123° 36'.63 E

17° 17'.95 S 123° 36'.28 E

17° 17'.74 S 123° 35'.72 E

17° 16'.50 S 123° 35'.60 E

Mariners are advised to navigate with caution in the area.

Charts will be updated in due course.

Chart which will be affected - Aus 45**988(T)/2024 AUSTRALIA - WESTERN AUSTRALIA - Fremantle - Deepwater Channel - Scientific instrument**

Former Notice - 1023(T)/2023 is cancelled

Department of Transport WA

A special light buoy, *Fl(5)Y.20s*, exists in position 31° 58'.78 S 115° 41'.38 E.

Chart temporarily affected - Aus 112**989(T)/2024 AUSTRALIA - WESTERN AUSTRALIA - Hilarys Boat Harbour - Light buoy restored**

Former Notice - 980(T)/2023 is cancelled

Department of Transport WA

Cancel this notice on receipt.

Chart formerly affected - Aus 754**990(T)/2024 AUSTRALIA - WESTERN AUSTRALIA - Houtman Abrolhos - Zeewijk Channel - Fish aggregating device**

Department of Primary Industries and Regional Development WA

A special light buoy, *Fl.Y.5s FAD (Oct-Apr)*, exists in position 28° 52'.74 S 113° 42'.37 E.

Chart temporarily affected - Aus 332**991(T)/2024 AUSTRALIA - WESTERN AUSTRALIA - Joseph Bonaparte Gulf - Drill rig**

Eni Australia Ltd , INPEX

On or about 9 December 2024, drill rig *Valaris 247* will be conducting drilling operations in position 13° 53'.70 S 128° 29'.05 E.

Chart temporarily affected - Aus 318**992(T)/2024 AUSTRALIA - WESTERN AUSTRALIA - Jurien Bay - Fish aggregating device westwards**

Department of Primary Industries and Regional Development WA

A special light buoy, *Fl.Y.5s FAD (Oct-Apr)*, exists in position 30° 18'.49 S 114° 35'.30 E.

Chart temporarily affected - Aus 753**993(T)/2024 AUSTRALIA - WESTERN AUSTRALIA - Karrakatta Rock - Historic wreck charted**

Former Notice - 981(P)/2023 is cancelled

MMA Offshore

Cancel this notice on receipt.

Chart formerly affected - Aus 732 - Aus 733

994(T)/2024 AUSTRALIA - WESTERN AUSTRALIA - Mermaid Reef - Scientific instrument recovered

Former Notice - 982(T)/2023 is cancelled
The University of Western Australia

Cancel this notice on receipt.

Chart formerly affected - Aus 325**995(T)/2024 AUSTRALIA - WESTERN AUSTRALIA - Muiron Islands - Subsea operations northwestwards**

Woodside Energy Ltd

On or about 19 December 2024, vessel *MMA Pinnacle* will be conducting subsea structure recovery operations in the Stybarrow Field in the vicinity of position 21° 28'.48 S 113° 49'.54 E and 21° 29'.70 S 113° 49'.74 E.

Mariners are advised to navigate with caution in the area.

Chart temporarily affected - Aus 328 - Aus 329**996(T)/2024 AUSTRALIA - WESTERN AUSTRALIA - Naturaliste Reefs - Fish aggregating devices westwards**

Department of Primary Industries and Regional Development WA

The special light buoy, *Fl. Y.5s FAD (Nov-Apr)* (33° 08'.65 S 114° 56'.63 E), has been temporarily relocated to position 33° 15'.79 S 114° 34'.94 E.

The special light buoy, *Fl. Y.5s FAD (Nov-Apr)* (33° 13'.96 S 114° 51'.47 E), has been temporarily relocated to position 33° 18'.62 S 114° 39'.43 E.

Chart temporarily affected - Aus 335**997(T)/2024 AUSTRALIA - WESTERN AUSTRALIA - Onslow - Shoaling charted**

Former Notice - 75(P)/2024 is cancelled
OSMB

Cancel this notice on receipt.

Chart formerly affected - Aus 64**998(T)/2024 AUSTRALIA - WESTERN AUSTRALIA - Pelsaert Island - Wreck Point - Fish aggregating device off station westwards**

Department of Primary Industries and Regional Development

The special light buoy, *Fl. Y.5s FAD (Dec-Apr)* (28° 59'.00 S 113° 46'.88 E), is off station.

Chart temporarily affected - Aus 332 - Aus 752**999(P)/2024 AUSTRALIA - WESTERN AUSTRALIA - Port Walcott - Shoaling**

Former Notice - 789(P)/2024 is cancelled
Discovery Marine

Latest survey indicates shoaler depths than those charted may exist in an area bounded by the following positions:

20° 29'.89 S 117° 25'.65E
20° 29'.89 S 117° 27'.02E
20° 27'.96 S 117° 27'.02E
20° 27'.96 S 117° 25'.65E.

Mariners are advised to navigate with caution in the area.

Charts will be updated in due course.

Chart which will be affected - Aus 55 - Aus 326

1000(T)/2024 AUSTRALIA - SOUTH AUSTRALIA - Cape Hardy - Geotechnical operations
Department for Infrastructure and Transport SA Notice 54(T)/2024

Geotechnical operations are in progress in the vicinity of position 34° 10'.97 S 136° 19'.83 E.

Mariners are advised to navigate with caution in the area.

Chart temporarily affected - Aus 777

1001(T)/2024 AUSTRALIA - SOUTH AUSTRALIA - Yarraville Shoals - Survey operations westwards
Department for Infrastructure and Transport SA Notice 81(T)/2024

A vessel is conducting geophysical survey operations in an area bounded by the following positions:

33° 14'.08 S 137° 25'.82 E

33° 14'.22 S 137° 29'.07 E

33° 15'.69 S 137° 28'.98 E

33° 15'.63 S 137° 25'.28 E.

Mariners are advised to navigate with caution in the area.

Chart temporarily affected - Aus 778

1002(T)/2024 AUSTRALIA - VICTORIA - Geelong - Survey operations completed

Former Notice - 81(T)/2022 is cancelled

Ports Victoria Notice 25(T)/2022

Cancel this notice on receipt.

Chart formerly affected - Aus 157

1003(T)/2024 AUSTRALIA - VICTORIA - Ninety Mile Beach - Drill rig

Former Notice - 928(T)/2024 is cancelled

MODU *Valaris 107*

Drill rig *Valaris 107* is conducting drilling operations in position 38° 31'.1 S 147° 50'.3 E.

Chart temporarily affected - Aus 357 - Aus 487

1004(T)/2024 AUSTRALIA - VICTORIA - Port Campbell - Subsea operations southwards
Woodside Energy Ltd

On or about 23 December 2024, vessel *Seven Sisters* will be conducting subsea operations associated with the decommissioning of the Minerva Field between positions 38° 37'.41 S 142° 57'.89 E and 38° 43'.12 S 142° 57'.73 E.

Mariners are advised to navigate with caution in the area.

Chart temporarily affected - Aus 349

1005(T)/2024 AUSTRALIA - VICTORIA - Port Phillip - Capel Sound - Moorings

Parks Victoria Notice 511(T)/2024

Temporary moorings exist in the vicinity of position 38° 20'.48 S 144° 50'.78 E.

Mariners area advised to navigate with caution in te area.

Chart temporarily affected - Aus 143

1006(T)/2024 AUSTRALIA - VICTORIA - Port Phillip - Brighton - Obstruction removed

Former Notice - 42(T)/2020 is cancelled
Parks Victoria Notice 374/2021

Cancel this notice on receipt.

Chart formerly affected - Aus 155**1007(T)/2024 AUSTRALIA - VICTORIA - Port Phillip - Sandringham - Dredging operations completed**

Former Notice - 542(T)/2021 is cancelled
Parks Victoria Notice 143(T)/2021

Cancel this notice on receipt.

Chart formerly affected - Aus 143 - Aus 155**1008(T)/2024 AUSTRALIA - VICTORIA - Port Phillip - Clifton Springs - Artificial reef**

Former Notice - 914(T)/2022 is cancelled
Parks Victoria Notice 429/2022

Cancel this notice on receipt.

Chart formerly affected - Aus 157**1009(T)/2024 AUSTRALIA - VICTORIA - Port Phillip - Williamstown - Harbour works completed**

Former Notice - 727(T)/2023 is cancelled
Ports Victoria

Cancel this notice on receipt.

Chart formerly affected - Aus 155**1010(T)/2024 AUSTRALIA - VICTORIA - Port Phillip - Ricketts Point - Beacon destroyed**

Former Notice - 831(T)/2024 is cancelled
Parks Victoria Notice 507(T)/2024

The special beacon (37° 59'.35 S 145° 01'.18 E) has been destroyed; a special buoy exists in situ.

Mariners are advised to navigate with caution in the area.

Chart temporarily affected - Aus 155**1011(T)/2024 AUSTRALIA - VICTORIA - Port Phillip - Mordialloc - Buoy restored**

Former Notice - 762(T)/2024 is cancelled
Parks Victoria Notice 531/2024

Cancel this notice on receipt.

Chart formerly affected - Aus 155**1012(T)/2024 AUSTRALIA - VICTORIA - Portland - Shoaling charted**

Former Notice - 416(T)/2021 is cancelled
Port of Portland

Cancel this notice on receipt.

Chart formerly affected - Aus 140

1013(T)/2024 AUSTRALIA - VICTORIA - Portland Bay - Scientific instruments recovered

Former Notice - 219(T)/2020 is cancelled
Department of Energy, Environment and Climate Action

Cancel this notice on receipt.

Chart formerly affected - Aus 140 - Aus 349

1014(T)/2024 AUSTRALIA - VICTORIA - Western Port - Exclusion zone removed

Former Notice - 90(T)/2022 is cancelled
Ports Victoria Notice 15/2022

Cancel this notice on receipt.

Chart formerly affected - Aus 151 - Aus 801 - Aus 4709 (INT 709)

1015(T)/2024 AUSTRALIA - TASMANIA - Furneaux Group - Shoaling charted; islands charted

Former Notice - 913(P)/2023 is cancelled
Department of Defence

Cancel this notice on receipt.

Chart formerly affected - Aus 179 - Aus 487 - Aus 798 - Aus 800

1016(T)/2024 AUSTRALIA - TASMANIA - Maria Island - Buoy removed

Former Notice - 937(T)/2024 is cancelled
Marine and Safety Tasmania Notice M410(T)/2024

Cancel this notice on receipt.

Chart formerly affected - Aus 766 - Aus 797

1017(T)/2024 AUSTRALIA - TASMANIA - Mercury Passage - Light buoy; AIS

Marine and Safety Tasmania Notice M407(T)/2024

A special light buoy, *Fl. Y. 3s*, with AIS exists in position 42° 31'.83 S 148° 01'.69 E.

Chart temporarily affected - Aus 766 - Aus 797

1018(T)/2024 AUSTRALIA - TASMANIA - Moorland Point to Claytons Bay - Scientific instruments northwards

Marine and Safety Tasmania Notice M405(T)/2024

Special light buoys, *Fl. Y.*, exist in the following positions:

41° 09'.11 S 146° 13'.67 E

41° 03'.95 S 146° 20'.34 E

41° 06'.54 S 146° 26'.29 E

41° 10'.15 S 146° 23'.87 E

41° 09'.97 S 146° 22'.37 E.

Mariners are advised not to moor on the light buoys and to navigate with caution in the area.

Chart temporarily affected - Aus 164

1019(T)/2024 AUSTRALIA - TASMANIA - North West Bay - Barretta - Infrastructure charted

Former Notice - 183(P)/2020 is cancelled
A Boon

Cancel this notice on receipt.

Chart formerly affected - Aus 171 - Aus 174

1020(T)/2024 AUSTRALIA - TASMANIA - Rocky Cape to East Sandy Point - Shoaling charted

Former Notice - 784(P)/2023 is cancelled
Australian Hydrographic Office

Cancel this notice on receipt.

Chart formerly affected - Aus 163 - Aus 164 - Aus 167 - Aus 487 - Aus 790 - Aus 798 - Aus 800

1021(T)/2024 SOLOMON ISLANDS - Bina Harbour - Shoaling charted

Former Notice - 44(P)/2020 is cancelled
HMAS *Leeuwin*

Cancel this notice on receipt.

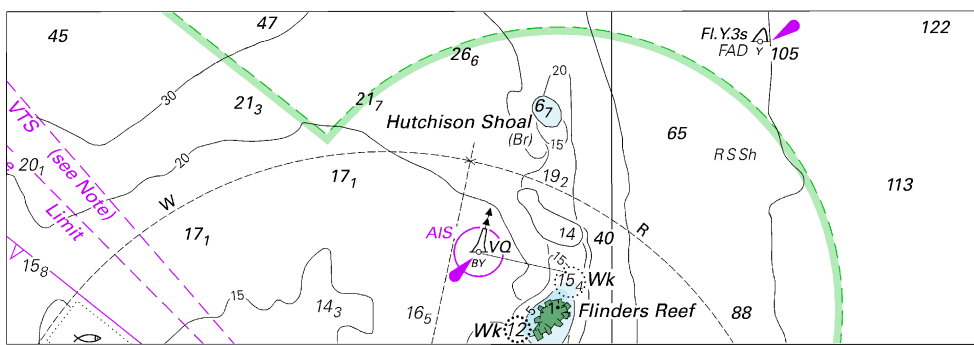
Chart formerly affected - SLB 104

II

HYDROGRAPHIC REPORTS

NIL

To accompany Australian Notice to Mariners 949/2024

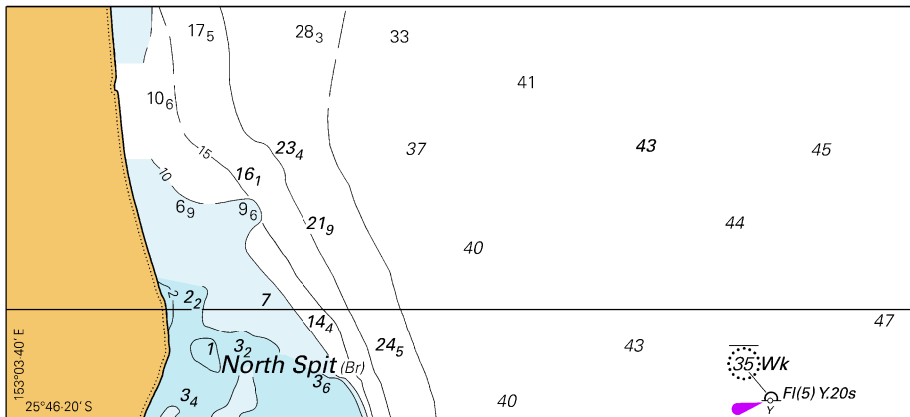


Block for chart Aus 814

© Commonwealth of Australia 2024

(128.3 x 43.9mm)

To accompany Australian Notice to Mariners 949/2024

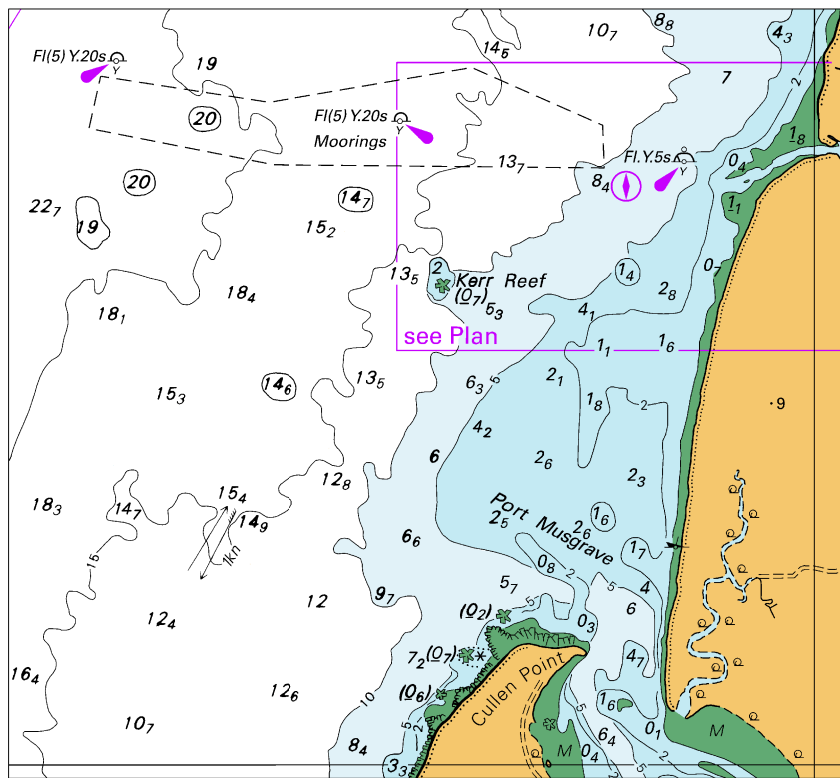


Block for chart Aus 816

© Commonwealth of Australia 2024

(120.3 x 54.5mm)

To accompany Australian Notice to Mariners 950/2024

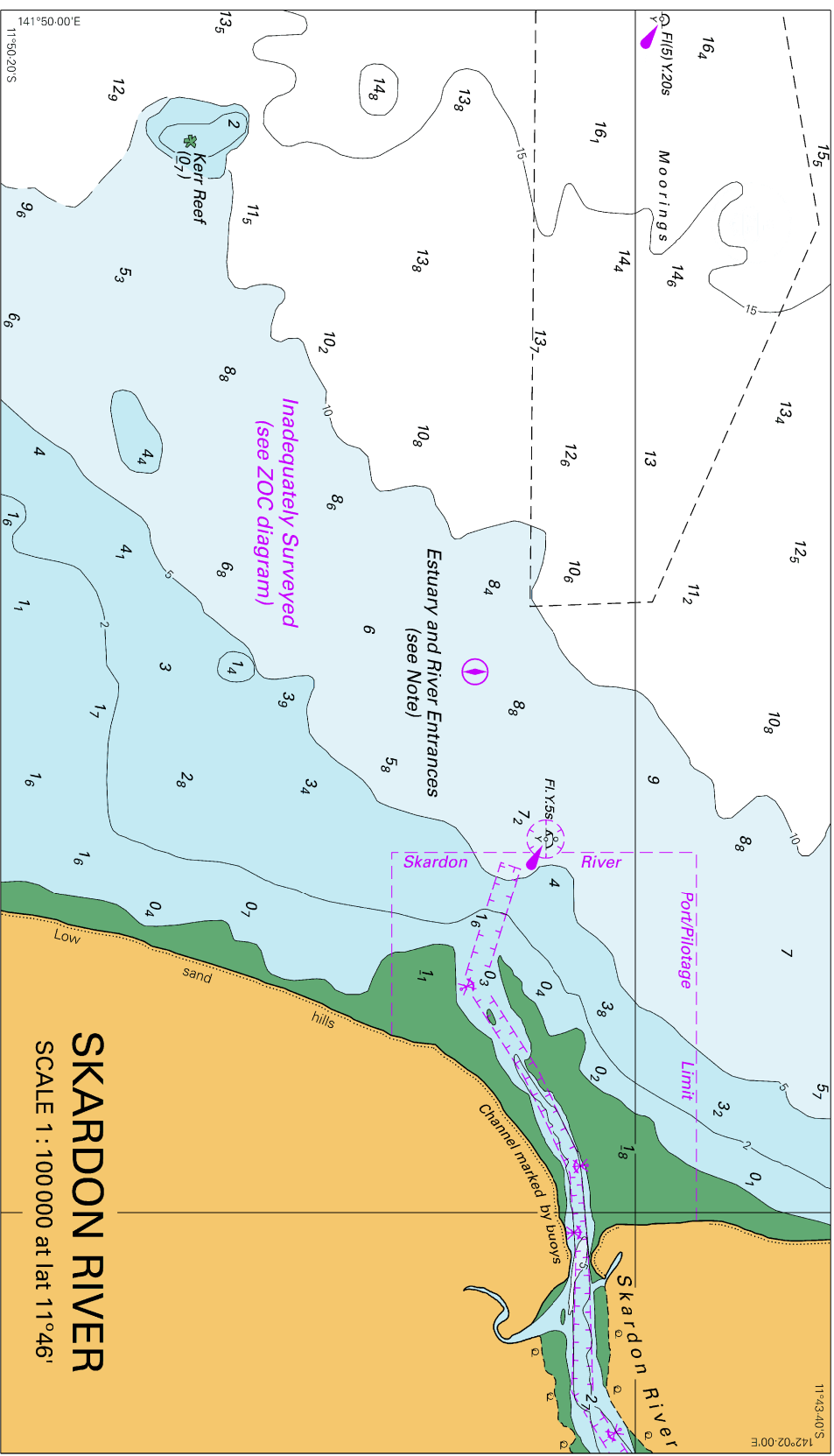


Block A for chart Aus 301

(111.2 x 101.7mm)

© Commonwealth of Australia 2024

To accompany Australian Notice to Mariners 950/2024

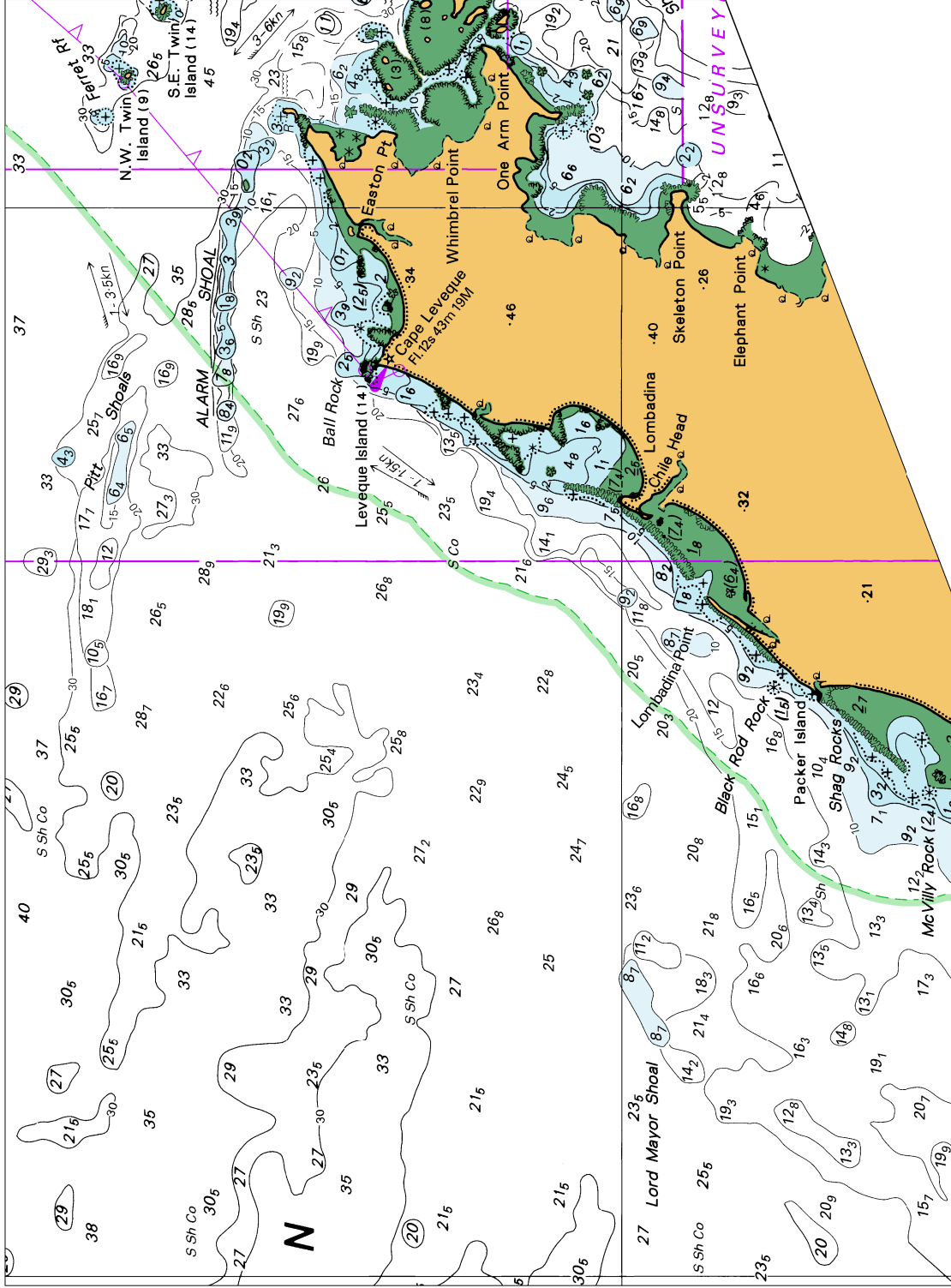


Block B for chart Aus 301

© Commonwealth of Australia 2024

(218.0 x 125.4mm)

To accompany Australian Notice to Mariners 951/2024

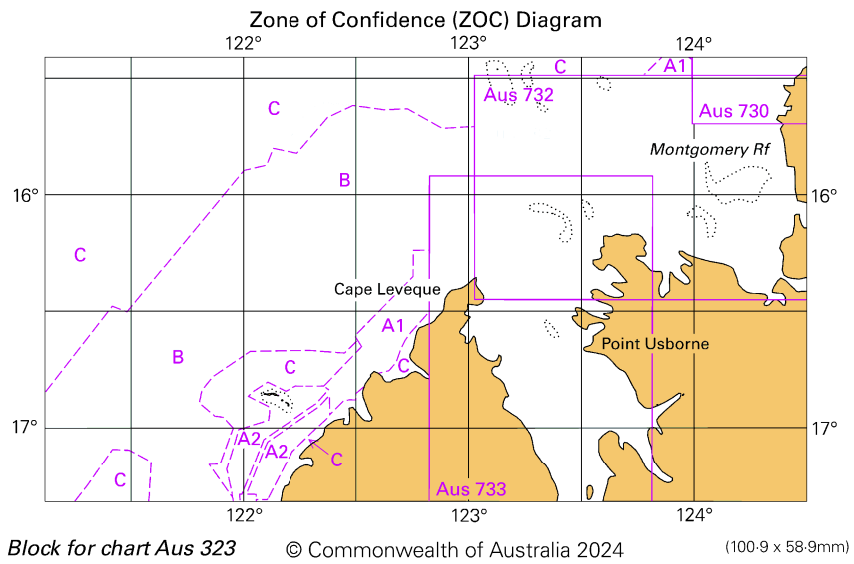


Block for chart Aus 323

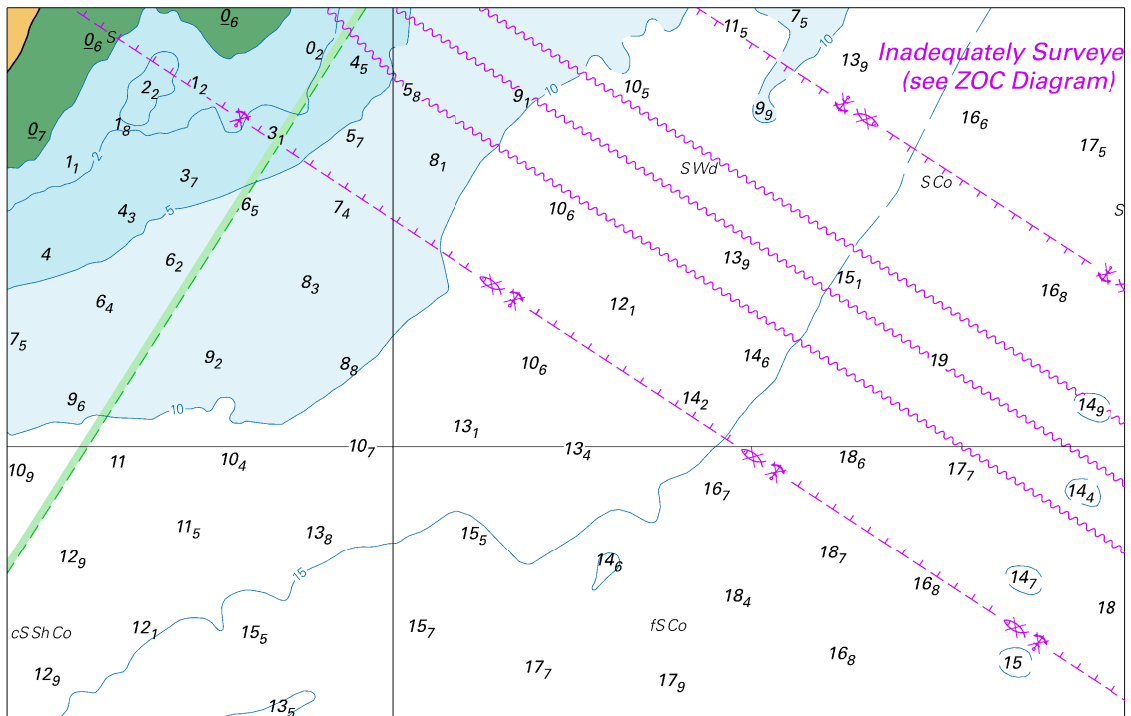
© Commonwealth of Australia 2024

(198.5 x 146.3mm)
(106.2

To accompany Australian Notice to Mariners 951/2024



To accompany Australian Notice to Mariners 957/2024

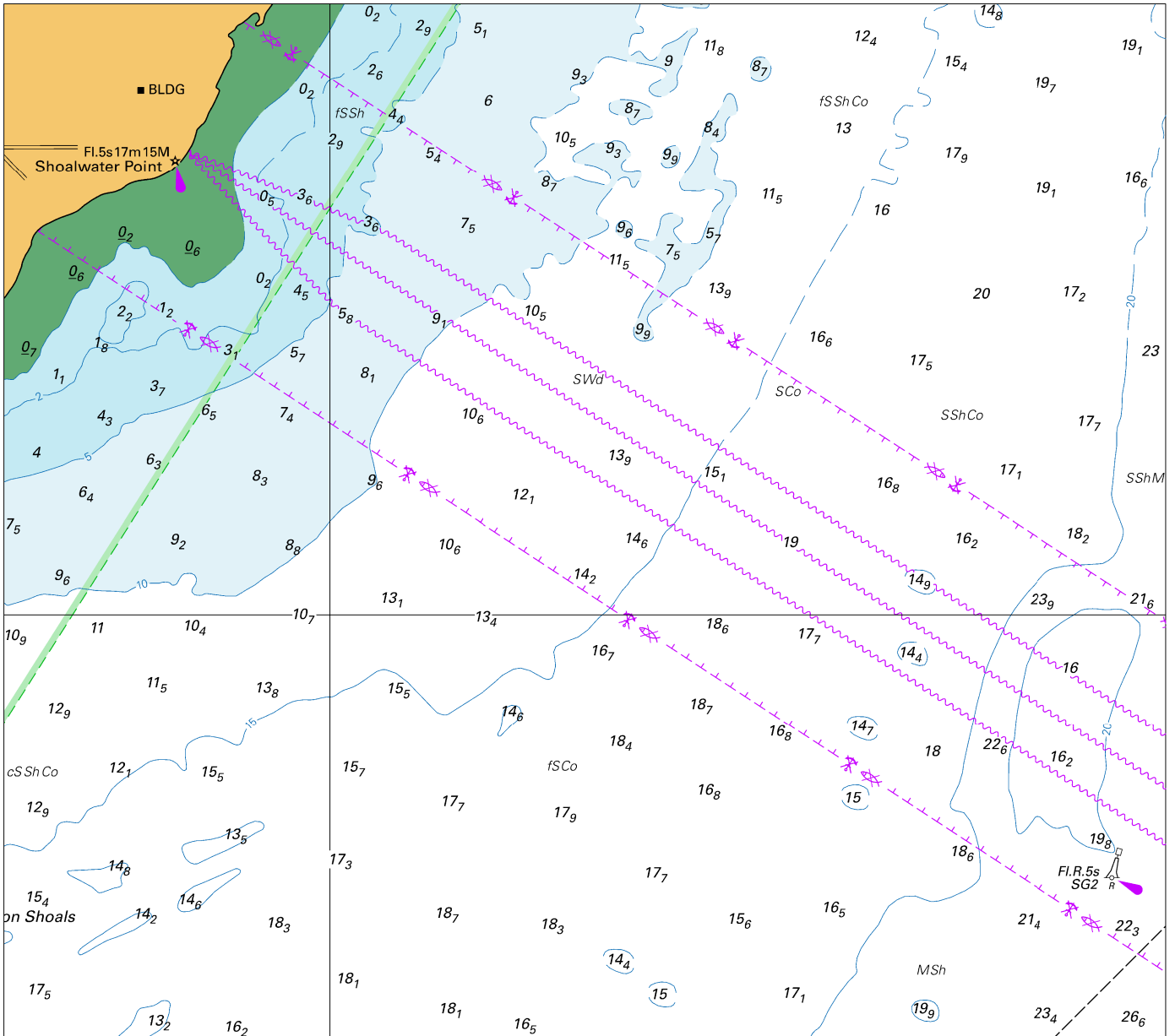


Block A for chart Aus 777

© Commonwealth of Australia 2024

(147.8 x 93.8mm)

To accompany Australian Notice to Mariners 957/2024

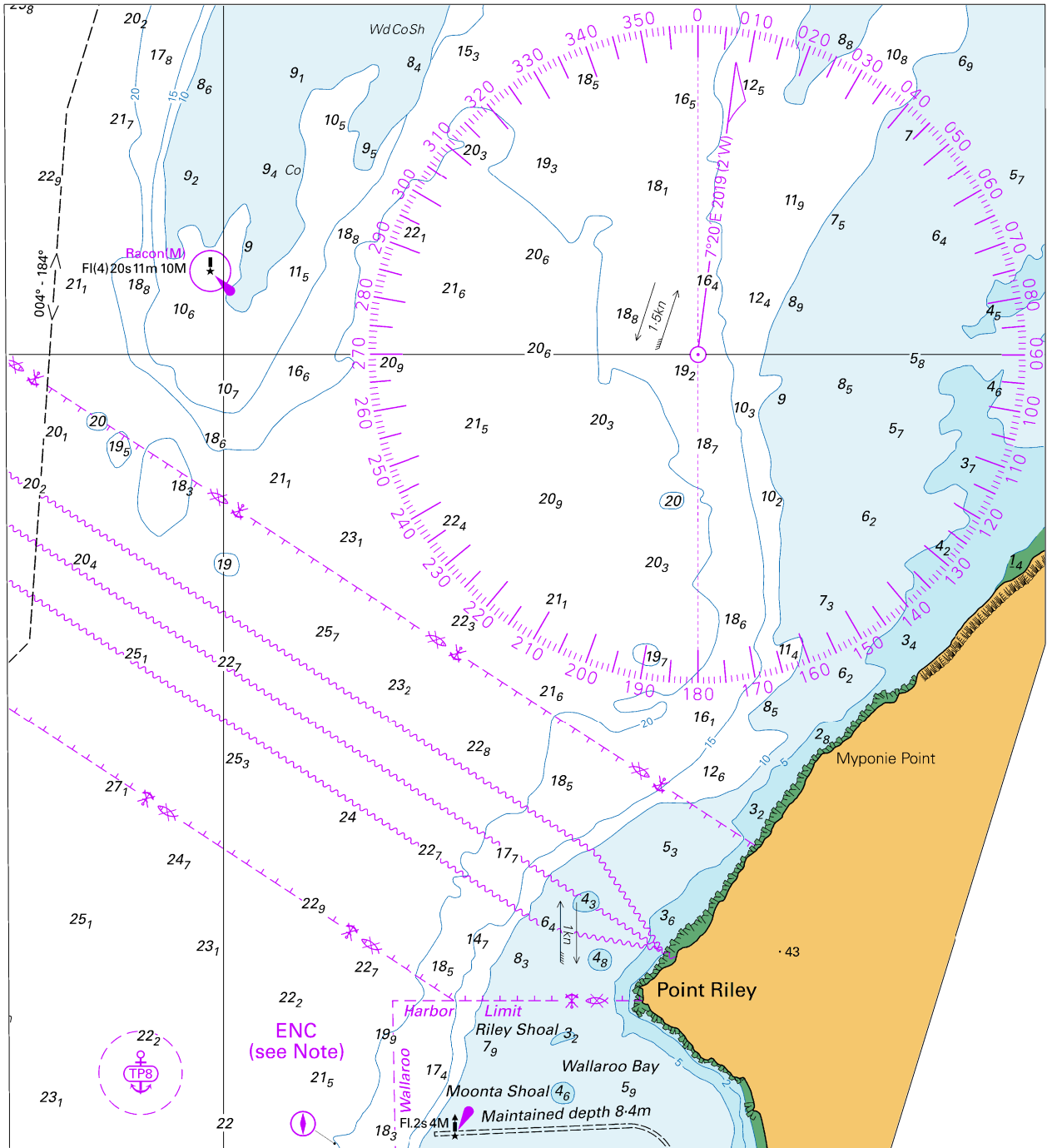


Block A for chart Aus 778

© Commonwealth of Australia 2024

(181.9 x 162.0mm)

To accompany Australian Notice to Mariners 957/2024



Block B for chart Aus 778

© Commonwealth of Australia 2024

(164.6 x 182.1mm)