



25 October 2024

Edition 22

AUSTRALIAN NOTICES TO MARINERS

Notices 796 - 833

Published fortnightly by the Australian Hydrographic Office



Australian Notices to Mariners are the authority for correcting charts and publications published by the Australian Hydrographic Office covering Australia, Papua New Guinea, Solomon Islands, Australian Antarctic Territory and Timor-Leste.

Commodore R.L. PHILLIPS RAN
Hydrographer of Australia

SECTIONS.

- I. **Australian Notices to Mariners, including blocks and notes.**
- II. **Hydrographic Reports.**

SUPPLEMENTS.

- I. **Tracings**
 - II. **Cumulative List of Australian Notices to Mariners.**
 - III. **Cumulative List of Temporary and Preliminary Australian Notices to Mariners.**
 - IV. **Temporary and Preliminary Notices in force.**
-
-

© Commonwealth of Australia 2024

This work is copyright. Apart from any use permitted under the Copyright Act 1968, no part may be reproduced by any process, adapted, communicated or commercially exploited without prior written permission from The Commonwealth represented by the Australian Hydrographic Office.

IMPORTANT NOTICE

This edition of Notices to Mariners includes all significant information affecting AHO products which the AHO has become aware of since the last edition. All reasonable efforts have been made to ensure the accuracy and completeness of the information, including third party information, on which these updates are based. The AHO regards third parties from which it receives information as reliable, however the AHO cannot verify all such information and errors may therefore exist. The AHO does not accept liability for errors in third party information.

GENERAL INSTRUCTIONS

The substance of these notices should be inserted on the charts affected.

Bearings are referred to the true compass and are reckoned clockwise from North; those relating to lights are given as seen by an observer from seaward.

Positions quoted in notices relate to WGS84 which is the horizontal datum for all charts produced by the Australian Hydrographic Office.

The range quoted for a light is its nominal range.

Depths are with reference to the chart datum of each chart. Heights are above mean high water springs or mean higher high water, as appropriate.

The capital letter (P) or (T) after the number of any notice denotes a preliminary or temporary notice respectively, which are contained separately at the end of the permanent notices.

REPORTING OF DANGERS

Mariners are particularly requested to notify the AUSTRALIAN HYDROGRAPHIC OFFICE, Locked Bag 8801 Wollongong, NSW 2500 (e-mail datacentre@hydro.gov.au or, alternatively by filling in and submitting the [Hydrographic Notes](#) forms located on the web site – www.hydro.gov.au), immediately on the discovery of new dangers or suspected dangers to navigation. For changes or defects in aids to navigation notify AusSAR (Fax 02-6230 6868 or email rccaus@amsa.gov.au).

AUTHORISED USE

Copies of Australian notices are available free of charge from the Australian Hydrographic Office (AHO) website (www.hydro.gov.au) and through the eNotices (email) service (www.hydro.gov.au/enotices/enotices.htm).

Individual Notices may be copied for the purpose of inserting Notice substance on official charts and publications. Paper copies may be printed by chart agents and distributed to customers on a cost recovery basis. Participating chart agents are listed on the AHO website as providing a 'Paper Notices to Mariners' service (www.hydro.gov.au/prodserv/agents-list.htm). Copies of the notices may not be sold for profit without prior written agreement.

NUMERICAL INDEX OF NOTICES TO MARINERS

Edition No 22

Notices	Aus Chart, INT Chart, ENC Cell, AHP, BA Pubs
796	Aus 294, 301, 700, 842
797	Products - New Charts and New Editions to be published shortly
798	AHO Website Feedback
799	Amendment to Mariner's Handbook for Australian Waters AHP20
800	Aus 489, 808
801	Aus 200
802	Aus 200, 808
803	Aus 489, 808
804	Aus 192, 806
805	Aus 819
806	Aus 296
807	Aus 311
808	Aus 312
809	Aus 4708, 4723, INT 708, 723
810	Aus 732, 733
811	Aus 743, 744
812	Aus 81, 332
813	Aus 81
814	Aus 55
815	Aus 318
816	Aus 746
817	Aus 40
818(T)	Aus 237
819(T)	Aus 237
820(T)	Aus 262
821(T)	Aus 245
822(T)	Aus 26
823(T)	Aus 26
824(T)	Aus 50
825(T)	Aus 323, 732, 733
826(T)	Aus 117
827(T)	Aus 328
828(T)	Aus 328, 329
829(T)	Aus 328, 743, 744
830(T)	Aus 136, 778
831(T)	Aus 155
832(T)	Aus 357, 487, 802
833(T)	Aus 487, 790

NUMERICAL INDEX OF CHARTS AFFECTED

Edition No 22

Aus Chart	Notices
Aus 26	822(T), 823(T)
Aus 40	817
Aus 50	824(T)
Aus 55	814
Aus 81	812, 813
Aus 117	826(T)
Aus 136	830(T)
Aus 155	831(T)
Aus 192	804
Aus 200	801, 802
Aus 237	818(T), 819(T)
Aus 245	821(T)
Aus 262	820(T)
Aus 294	796
Aus 296	806
Aus 301	796
Aus 311	807
Aus 312	808
Aus 318	815
Aus 323	825(T)
Aus 328	827(T), 828(T), 829(T)
Aus 329	828(T)
Aus 332	812
Aus 357	832(T)
Aus 487	832(T), 833(T)
Aus 489	800, 803
Aus 700	796
Aus 732	810, 825(T)
Aus 733	810, 825(T)
Aus 743	811, 829(T)
Aus 744	811, 829(T)
Aus 746	816
Aus 778	830(T)
Aus 790	833(T)
Aus 802	832(T)
Aus 806	804
Aus 808	800, 802, 803
Aus 819	805
Aus 842	796
Aus 4708	809
Aus 4723	809

INT Chart	Notices
INT 708	809
INT 723	809

796 AUSTRALIA - Products - New Charts, New Editions, Withdrawn Charts

Australian Hydrographic Office

New Charts

<i>Chart</i>	<i>Title and Geographical limits</i>	<i>Scale</i>	<i>Publication Date</i>	<i>Remarks</i>
NIL				

New Electronic Navigation Chart (Aus ENC)

<i>Cell Name</i>	<i>Title</i>	<i>Publication Date</i>	<i>Remarks</i>
NIL			

New Editions and Withdrawn Charts

<i>Chart</i>	<i>Title</i>	<i>Scale</i>	<i>Publication Date</i>	<i>Remarks</i>
Aus 294 (Edition 3)	Australia - North Coast - Torres Strait - Endeavour Strait Plan: Approaches to Red Island Point	1:75 000 1:20 000	25 October 2024	New edition with general updating throughout; including new bathymetric data and ESSA limits. Chart Aus 294 Edition 2 dated 22 February 2013 is now superseded and must be withdrawn from use.
Aus 301 (Edition 5)	Australia - North Coast - Queensland - Booby Island to Archer River Plan: Skardon River	1:300 000 1:100 000	25 October 2024	New edition with general updating throughout; including new bathymetric data and ESSA limits. Chart Aus 301 Edition 4 dated 18 October 2019 is now superseded and must be withdrawn from use.
Aus 700 (Edition 5)	Australia - North Coast - Queensland - Western Approaches to Torres Strait	1:150 000	25 October 2024	New edition with general updating throughout; including new bathymetric data and ESSA limits. Chart Aus 700 Edition 4 dated 1 November 2013 is now superseded and must be withdrawn from use.
Aus 842 (Edition 2)	Australia - Papua New Guinea - Torres Strait - Varzin Passage to Unji Point	1:150 000	25 October 2024	New edition with general updating throughout; including new bathymetric data and ESSA limits. Chart Aus 842 Edition 1 dated 24 August 2012 is now superseded and must be withdrawn from use.

Australian National Tide Tables 2025

<i>AHP No</i>	<i>Remarks</i>
AHP11	The Australian National Tide Tables (ANTT) 2025 is now available as a pdf download from the AHO website products download page (www.hydro.gov.au/webapps/jsp/downloads/products.jsp) or via an interactive digital platform from the AHO website (https://services.hydro.gov.au/antt2025/). <i>The ANTT 2025 PDF book is an official nautical publication and complies with Australian carriage requirements.</i>

796 AUSTRALIA - Products - New Charts, New Editions, Withdrawn Charts

Papua New Guinea National Tide Tables 2025

Remarks

The Papua New Guinea National Tide Tables 2025 provides tidal information for Papua New Guinea ports. Now available as a pdf download from the AHO website products download page (www.hydro.gov.au/webapps/jsp/downloads/products.jsp).

Solomon Islands National Tide Tables 2025

Remarks

The Solomon Islands National Tide Tables 2025 provides tidal information for Solomon Islands ports. Now available as a pdf download from the AHO website products download page (www.hydro.gov.au/webapps/jsp/downloads/products.jsp).

Timor Leste National Tide Tables 2025

Remarks

The Timor Leste National Tide Tables 2025 provides tidal information for Timor Leste ports. Now available as a pdf download from the AHO website products download page (www.hydro.gov.au/webapps/jsp/downloads/products.jsp).

Chart permanently withdrawn

Charts listed above as withdrawn no longer meet chart carriage requirements and should be marked as "superseded" and replaced with the new chart/ new edition listed prior to passage through the area covered by the new chart.

When placing orders with a chart agent between notice of forthcoming edition and its publication, mariners should advise whether their order pertains to the current edition or the new edition.

For further details refer to the AHO website at www.hydro.gov.au for new edition and new chart stock arrival information.

797 AUSTRALIA - Products - New Charts and New Editions to be published shortly

Australian Hydrographic Office

New Charts to be published shortly

Chart	Title	Scale	Remarks
NIL			

New Editions to be published shortly

Chart	Title	Scale	Remarks
NIL			

798 AHO Website Feedback

Australian Hydrographic Office

The AHO is seeking customer feedback on the current AHO Website (www.hydro.gov.au) to help drive future design decisions.

Your feedback will help us provide quality, relevant and timely information to the maritime community.

<https://survey123.arcgis.com/share/7477e4f8b9a1471095f704e8278ffac7>

799 AUSTRALIA - Product - Amendment to Mariner's Handbook for Australian Waters AHP20
Department of Transport and Main Roads QLD

Chapter 7.13.2 - TORRES PILOTS PTY LIMITED - Page 122

Replace Torres Pilots - pilot boarding places table with accompanying block

Chapter 11.6.3 - PORTS - Page 223

Replace Cairns table with accompanying block

800 AUSTRALIA - NEW SOUTH WALES - Kiama - Light
Transport for NSW

Aus 489 [965/2022]

Amend light range to 17M 34° 40'.3 S 150° 51'.8 E

Aus 808 [695/2024]

Amend light range to 17M 34° 40'.3 S 150° 51'.8 E

801 AUSTRALIA - NEW SOUTH WALES - Port Jackson - Bradleys Head - Light buoys
Transport for NSW

Aus 200 [694/2024]

Insert special cylindrical light buoy, Fl. Y.3s, with topmark 33° 51'.357 S 151° 15'.060 E

Delete light buoy 33° 51'.37 S 151° 14'.94 E

802 AUSTRALIA - NEW SOUTH WALES - Port Jackson - Lane Cove River - Nav aids
Transport for NSW

Aus 200 [801/2024]

Insert starboard lateral topmark 33° 50'.100 S 151° 09'.827 E

Delete radio mast and legend (R Lts)(305) 33° 48'.71 S 151° 11'.75 E
beacon 33° 49'.09 S 151° 08'.73 E
buoy 33° 49'.22 S 151° 08'.85 E
topmark 33° 49'.84 S 151° 09'.17 E

Aus 808 [800/2024]

Delete tower and legend (R Lts)(305) 33° 48'.6 S 151° 11'.8 E

803 AUSTRALIA - NEW SOUTH WALES - Shoalhaven River - Light
Transport for NSW

Aus 489 [800/2024]

Amend light range to 5M 34° 54'.0 S 150° 46'.2 E

Aus 808 [802/2024]

Amend light range to 5M 34° 54'.0 S 150° 46'.2 E

804 AUSTRALIA - NEW SOUTH WALES - Twofold Bay - Seahorse Shoals - Wreck northwestwards
Port Authority of New South Wales

Aus 192 [633/2024]

Insert depth, 28₂m, enclosed by danger circle with legend, Wk 37° 04'.620 S 149° 56'.863 E

Aus 806 [690/2024]

Insert depth, 28₂m, enclosed by danger circle with legend, Wk 37° 04'.62 S 149° 56'.86 E

805 AUSTRALIA - QUEENSLAND - Gladstone - Facing Island - North Point - Pilot boarding place

Maritime Safety Queensland , UKHO

Aus 819 [90/2024]

Delete pilot boarding place and magenta legend, Coast 23° 43'.8 S 151° 21'.5 E

806 AUSTRALIA - TORRES STRAIT - Varzin Passage - Depths

Department of Defence

Aus 296 [639/2024]Insert [accompanying ZOC diagram](#) 10° 27'.5 S 142° 08'.3 E
[accompanying block](#) 10° 32'.3 S 141° 49'.0 E**807 AUSTRALIA - TIMOR SEA - Margaret Harries Banks - Depths; ZOC diagram**

Australian Hydrographic Office

Aus 311 [478/2022]Insert [accompanying ZOC diagram](#) 09° 01'.0 S 127° 24'.0 E
[accompanying block](#) 10° 22'.0 S 128° 42'.0 E**808 TIMOR-LESTE - AUSTRALIA - Timor-Leste to Dillon Shoal - ZOC diagram**

Australian Hydrographic Office

Aus 312 [773/2024]Insert [accompanying ZOC diagram](#) 8° 45'.0 S 125° 57'.0 E**809 INDONESIA - Java - Sunda Trough - Obstruction**

UKHO Notice 41/4599/2024

Aus 4708 (INT 708) [703/2024]Amend legend to *Obstn ED* 8° 58'.9 S 107° 54'.4 E**Aus 4723 (INT 723) [703/2024]**Amend legend to *Obstn ED* 8° 58'.5 S 108° 10'.0 E**810 AUSTRALIA - WESTERN AUSTRALIA - Alarm Shoal - Depths**

Australian Hydrographic Office

Aus 732 [475/2023]Insert [accompanying ZOC diagram](#) 16° 15'.0 S 124° 36'.0 E
[accompanying block](#) 16° 18'.0 S 123° 02'.5 E**Aus 733 [734/2024]**Insert [accompanying block](#) 16° 23'.0 S 122° 57'.0 E
[accompanying ZOC diagram](#) 17° 16'.0 S 122° 54'.5 E**811 AUSTRALIA - WESTERN AUSTRALIA - Ashburton - Port limit**

Pilbara Ports Authority

Aus 743 [672/2024]Insert [accompanying block](#) 21° 27'.0 S 114° 49'.0 E**Aus 744 [672/2024]**Insert [accompanying block](#) 21° 27'.0 S 114° 48'.0 E

812 AUSTRALIA - WESTERN AUSTRALIA - Geraldton - Point Moore - Light

Australian Maritime Safety Authority Final ATH 14/2024

Aus 81 [591/2024]

Amend light range to 18M 28° 46'.96 S 114° 34'.77 E

Aus 332 [144/2024]

Amend light range to 18M 28° 47'.0 S 114° 34'.8 E

813 AUSTRALIA - WESTERN AUSTRALIA - Geraldton - Infrastructure; depths

Former Notice - 770(T)/2023 is cancelled

Australian Geospatial-Intelligence Organisation , Mid West Ports

Aus 81 (Geraldton) [812/2024]

Insert accompanying block 28° 46'.3 S 114° 36'.3 E

814 AUSTRALIA - WESTERN AUSTRALIA - Port Walcott - Outer North Channel - Depths

Aquamap Pty Ltd

Aus 55 [671/2024]Insert depth, 12m 20° 26'.01 S 117° 20'.74 E
depth, 11₂m 20° 26'.40 S 117° 20'.87 EDelete depth, 13₅ 20° 26'.0 S 117° 20'.8 E
depth, 12₂ 20° 26'.4 S 117° 20'.8 E**815 AUSTRALIA - WESTERN AUSTRALIA - Wyndham - Port limit**

Kimberley Ports Authority

Aus 318 [320/2024]Delete magenta dashed line and legend, Wyndham, between 14° 45'.3 S 128° 13'.3 E
14° 45'.3 S 128° 18'.1 E
magenta dashed line and legend, Port Limit, between 14° 45'.6 S 128° 19'.0 E
14° 48'.9 S 128° 22'.7 E**Aus 318 (Cambridge Gulf) [320/2024]**Insert magenta dashed line with legend, Wyndham Port Limit, between 14° 55'.97 S 128° 07'.61 E
14° 56'.26 S 128° 17'.74 E
magenta dashed line, between 15° 02'.44 S 128° 07'.51 E
15° 09'.42 S 128° 07'.61 E
magenta dashed line, between 15° 11'.00 S 128° 07'.68 E
14° 57'.24 S 128° 07'.07 E
14° 57'.87 S 128° 06'.83 EDelete magenta dashed line and legend, Wyndham, between 14° 45'.3 S 128° 13'.3 E
14° 45'.3 S 128° 18'.1 E
magenta dashed line and legend, Port Limit, between 14° 45'.6 S 128° 19'.0 E
14° 48'.9 S 128° 22'.7 E**816 AUSTRALIA - WESTERN AUSTRALIA - Yalobia Passage - Nav aids**

Department of Transport WA

Aus 746 [429/2023]

Replace beacon with rectangular orange daymark 23° 11'.7 S 113° 46'.7 E

Amend legend to 076-5° 23° 12'.1 S 113° 44'.6 E

817 AUSTRALIA - WESTERN AUSTRALIA - Yampi Sound - Port limit
Kimberley Ports Authority

Aus 40 [552/2024]

Insert	magenta dashed line with legend, <i>Yampi Sound Port Limit</i> , between	16° 03'.064 S	123° 44'.200 E	
		16° 05'.990 S	123° 44'.200 E	
		16° 05'.990 S	123° 48'.010 E	
		16° 09'.620 S	123° 48'.006 E	
		16° 09'.620 S	123° 48'.180 E	
		16° 10'.000 S	123° 48'.180 E	
		16° 10'.000 S	123° 47'.935 E	
		magenta dashed line, between	16° 10'.000 S	123° 47'.899 E
		magenta dashed line, between	16° 10'.000 S	123° 47'.865 E
		magenta dashed line, between	16° 10'.000 S	123° 47'.699 E
		magenta dashed line, between	16° 10'.000 S	123° 46'.715 E
		magenta dashed line with legend, <i>Yampi Sound Port Limit</i> , between	16° 10'.000 S	123° 46'.351 E
			16° 10'.000 S	123° 45'.951 E
			16° 08'.000 S	123° 42'.231 E
			16° 08'.000 S	123° 41'.000 E
			16° 08'.800 S	123° 41'.000 E
	16° 08'.800 S	123° 36'.000 E		
	16° 08'.000 S	123° 36'.000 E		
	16° 08'.000 S	123° 32'.611 E		
Delete	magenta dashed line and legend, <i>Yampi Sound Port Limit</i> , between	16° 08'.00 S	123° 32'.61 E	
		16° 11'.60 S	123° 32'.61 E	
		magenta dashed line and legend, <i>Yampi Sound Port Limit</i> , between	16° 03'.06 S	123° 44'.20 E
		16° 03'.05 S	123° 48'.19 E	
		magenta dashed line, between	16° 10'.18 S	123° 48'.20 E
		16° 10'.32 S	123° 48'.20 E	
		16° 11'.27 S	123° 48'.21 E	

818(T)/2024 AUSTRALIA - QUEENSLAND - Brisbane River - Hamilton Reach - Light buoys; harbour works*Former Notice - 742(T)/2024 is cancelled*

Maritime Safety Queensland Notice 474(T)/2024, 497(T)/2024

Light buoys, which mark a construction zone, exist as follows:

<i>Position</i>	<i>Remarks</i>
27° 26'.51 S 153° 04'.01 E	<i>Fl. Y. 2s</i>
27° 26'.47 S 153° 03'.73 E	<i>Fl. Y. 3s.</i>
27° 26'.48 S 153° 03'.86 E	<i>Fl. G. 2.5s.</i>

Mariners are advised to navigate with caution in the area.

Chart temporarily affected - Aus 237**819(T)/2024 AUSTRALIA - QUEENSLAND - Brisbane River - Lytton and Quarantine Reach - Light beacon restored***Former Notice - 281(T)/2024 is cancelled*

Maritime Safety Queensland

Cancel this notice on receipt.

Chart formerly affected - Aus 237**820(T)/2024 AUSTRALIA - QUEENSLAND - Cairns - Trinity Inlet - Wreck***Former Notice - 1052(T)/2023 is cancelled*

Maritime Safety Queensland Notice 569(T)/2023

Cancel this notice on receipt.

Chart formerly affected - Aus 262**821(T)/2024 AUSTRALIA - QUEENSLAND - Gladstone - North Channel to North Passage Island - Scientific instruments**

Maritime Safety Queensland Notice 518(T)/2024

Special light buoys, *Fl. Y. 4-5s*, exist in the following positions:

23° 46'.97 S 151° 18'.38 E
 23° 48'.30 S 151° 12'.56 E
 23° 47'.07 S 151° 11'.13 E
 23° 45'.92 S 151° 10'.87 E.

Mariners are advised to navigate with caution in the area.

Chart temporarily affected - Aus 245**822(T)/2024 AUSTRALIA - NORTHERN TERRITORY - Darwin - LNG Terminal - Light buoy***Former Notice - 489(T)/2024 is cancelled*

Northern Territory Government Notice 096(T)/2024

Special light buoy, *Fl. Y.*, exists in position 12° 31'.60 S 130° 51'.58 E.**Chart temporarily affected - Aus 26****823(T)/2024 AUSTRALIA - NORTHERN TERRITORY - Darwin - Bladin Point - Light beacon unlit**

Northern Territory Government Notice 94/2024

The port lateral light beacon, *Fl. R. 3s* (12° 30'.07 S 130° 54'.88 E), is unlit.**Chart temporarily affected - Aus 26**

824(T)/2024 AUSTRALIA - WESTERN AUSTRALIA - Broome - Obstruction westwards
Kimberley Ports Authority Notice 14/2024

A lost anchor exists within anchorage O3 (17° 55'.00 S 122° 04'.00 E).

Mariners are advised to navigate with caution in the area and avoid anchoring within the O3 anchorage area.

Chart temporarily affected - Aus 50

825(T)/2024 AUSTRALIA - WESTERN AUSTRALIA - Cape Leveque - Survey operations completed
Former Notice - 944(T)/2023 is cancelled
Australian Hydrographic Office

Cancel this notice on receipt.

Chart formerly affected - Aus 323 - Aus 732 - Aus 733

826(T)/2024 AUSTRALIA - WESTERN AUSTRALIA - Cockburn Sound - Mangles Bay - Wreck
Department of Transport WA Notice 6191/2024

A stranded wreck exists in position 32° 16'.22 S 115° 42'.34 E.

Mariners are advised to navigate with caution in the area.

Chart temporarily affected - Aus 117

827(T)/2024 AUSTRALIA - WESTERN AUSTRALIA - Dampier Archipelago - Well plug and abandonment works completed northwestwards
Former Notice - 717(T)/2024 is cancelled
Woodside Energy Ltd

Cancel this notice on receipt.

Chart formerly affected - Aus 328

828(T)/2024 AUSTRALIA - WESTERN AUSTRALIA - North West Cape - Scientific instrument northwestwards
Fugro

A special light buoy, *Fl(5)Y.20s*, exists in position 21° 26'.94 S 113° 48'.54 E.

Chart temporarily affected - Aus 328 - Aus 329

829(T)/2024 AUSTRALIA - WESTERN AUSTRALIA - Thevenard Island - Scientific instrument northwestwards
Former Notice - 864(T)/2023 is cancelled
Fugro

A special light buoy, *Fl(5)Y.20s*, exists in position 21° 11'.37 S 114° 40'.23 E.

Chart temporarily affected - Aus 328 - Aus 743 - Aus 744

830(T)/2024 AUSTRALIA - SOUTH AUSTRALIA - Port Bonython - Light buoy unlit
Department for Infrastructure and Transport SA Notice 64(T)/2024

The port lateral light buoy, *Fl.R.2s No8* (33° 01'.29 S 137° 46'.28 E), is unlit.

Chart temporarily affected - Aus 136 - Aus 778

831(T)/2024 AUSTRALIA - VICTORIA - Port Phillip - Ricketts Point - Beacon destroyed
Parks Victoria Notice 432(T)/2024

The special beacon (37° 59'.35 S 145° 01'.18 E) has been destroyed.

Mariners are advised to navigate with caution in the area.

Chart temporarily affected - Aus 155

832(T)/2024 AUSTRALIA - BASS STRAIT - Ninety Mile Beach - Survey operations southwards
Orsted

On or about 31 October 2024, MV *Offshore Solution*, with a towed array, will be conducting a geophysical survey in an area bounded by the coast and the following positions:

- 38° 25'.03 S 147° 08'.49 E
- 38° 34'.71 S 147° 06'.71 E
- 38° 52'.26 S 147° 26'.87 E
- 39° 06'.00 S 147° 45'.74 E
- 39° 10'.80 S 147° 49'.20 E
- 39° 23'.58 S 147° 33'.34 E
- 39° 06'.70 S 147° 08'.17 E
- 38° 54'.37 S 147° 23'.40 E
- 38° 35'.16 S 147° 04'.55 E
- 38° 27'.39 S 147° 05'.41 E.

Mariners are advised to navigate with caution in the area. 1000m clearance requested.

Note: For e-notice users, please see full edition for map.

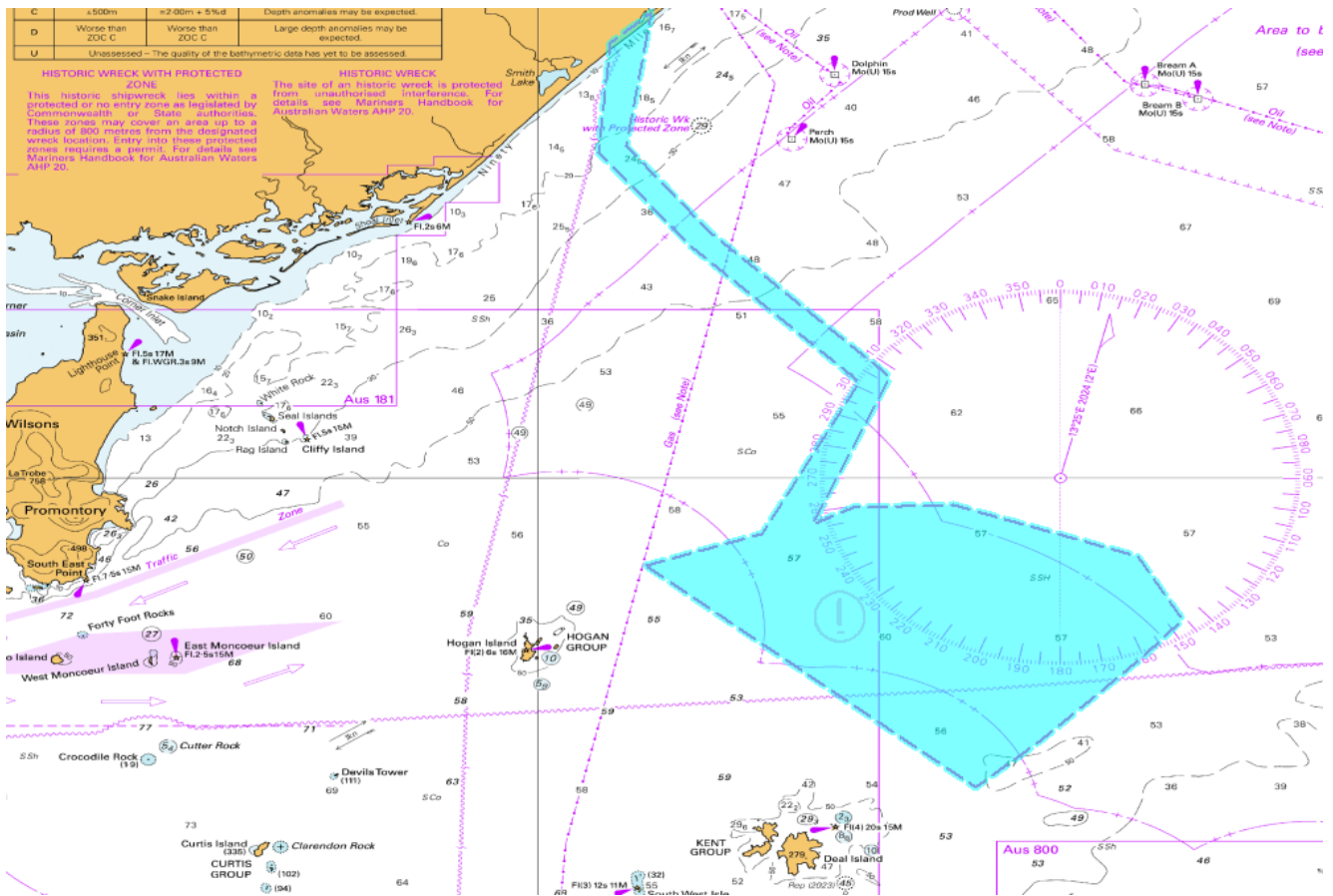


Chart temporarily affected - Aus 357 - Aus 487 - Aus 802

833(T)/2024 AUSTRALIA - TASMANIA - Robbins Island to Rocky Cape - Scientific instruments northeastwards recovered

Former Notice - 627(T)/2024 is cancelled
Maritime and Safety Tasmania Notice M340(T)/2024

Cancel this notice on receipt.

Chart formerly affected - Aus 487 - Aus 790

II

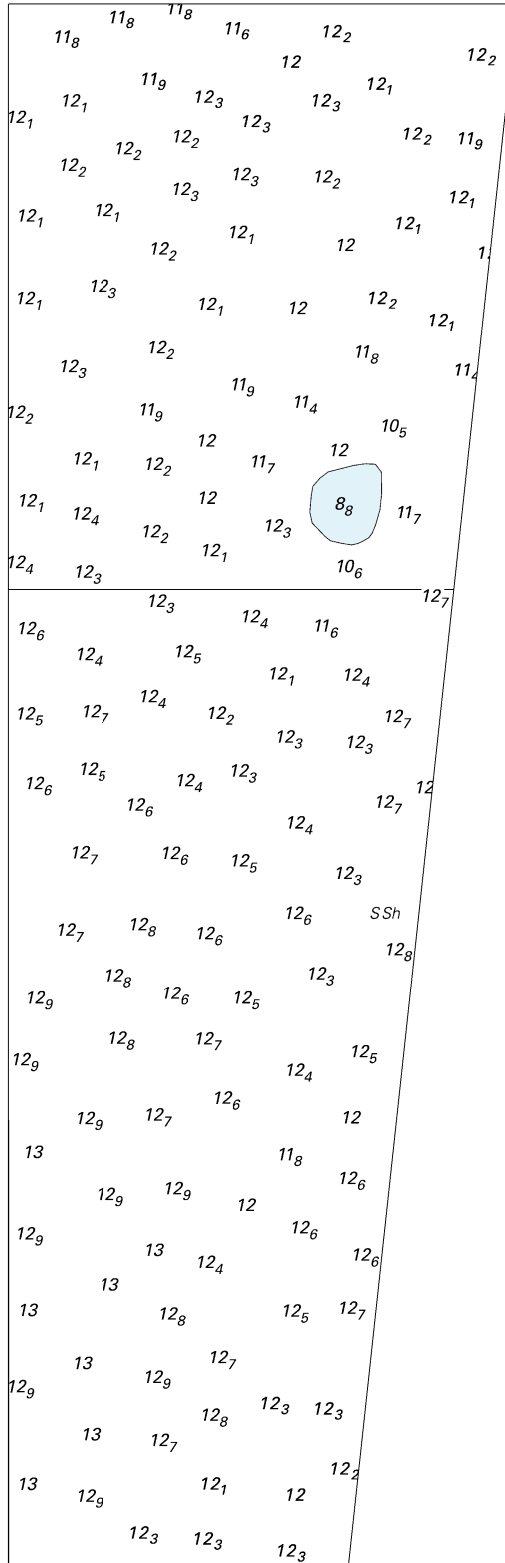
HYDROGRAPHIC REPORTS

NIL

Location	Position	ENC/ PNC	VHF Channel	Method
Cairns Fairway (Cairns)	16°45'S 145°50'E	AU5CNS01 / Aus 830	79	Launch or Helo
Goods Island (Torres Strait)	10°34'S 142°04'E	AU411142 / Aus 700	79	Launch
Booby Island (Torres Strait)	10°36'S 141°50'E	AU411141 / Aus 700	79	Launch
Dalrymple Island (GNE Channel)	9°34'S 143°24'E	AU410143 / Aus 840	79	Launch
Hydrographers Passage (off Blossom Bank)	19°43'S 150°26'E	AU420150 / Aus 821	79	Helo

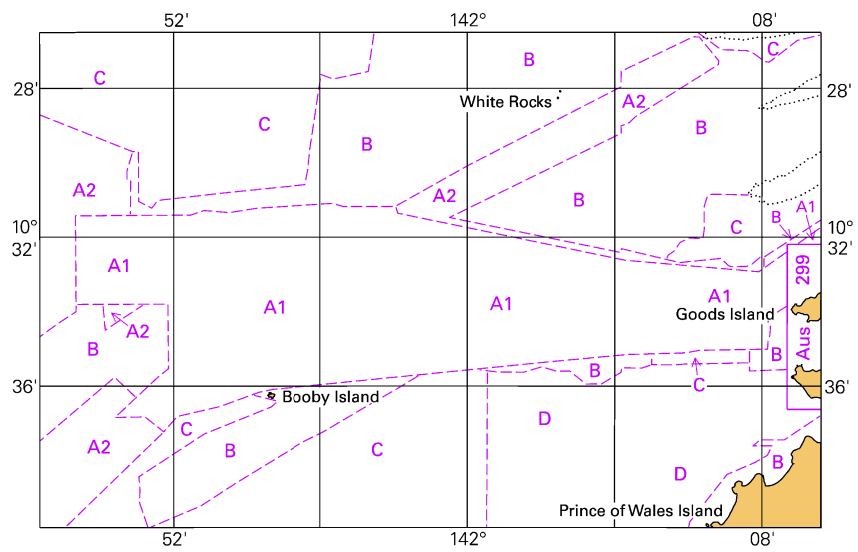
Cairns, QLD (16° 56'S, 145° 47'E)	
UN/LOCODE: AU CNS	
Paper charts:	Aus 263, 264
AusENC cells:	AU5CNS01, AU417145, AU417146
Security Regulated Port:	Yes
Port Authority:	Ports North
Website:	www.portsnorth.com.au
Email:	enquiries@portsnorth.com.au
Telephone:	+61 7 4052 3888
Regional Harbour Master:	+61 7 4052 7400
Vessel Traffic Service	
Telephone:	+61 7 4052 7470
Email:	vtscairns@msq.qld.gov.au
Pilotage:	Compulsory
Pilot:	Cairns Duty Pilot
Telephone:	+61 7 4041 4214
Fax:	+61 7 4052 3844
Email:	cns_pilot_duty@bigpond.com
Ordering:	Via Cairns VTS
Pilot Boarding Grounds:	16° 45.00'S, 145° 50.00'E 16° 48.60'S, 145° 50.60'E 16° 50.26'S, 145° 49.04'E
Communication:	"Cairns Harbour"
Call up, emergencies:	VHF Channel 16
Port Operations:	VHF Channel 16, 12
Pilots and Tugs:	VHF Channel 16, 08
VTS:	VHF Channel 16, 12 (Call sign "Cairns VTS")
Notice of ETA:	72 hrs, 48 hrs and 24 hrs confirmation
For more information:	www.msq.qld.gov.au/Shipping/Port-procedures/Port-procedures-cairns

To accompany Australian Notice to Mariners 806/2024



Block for chart Aus 296 (67.0 x 206.5mm)
© Commonwealth of Australia 2024

To accompany Australian Notice to Mariners 806/2024

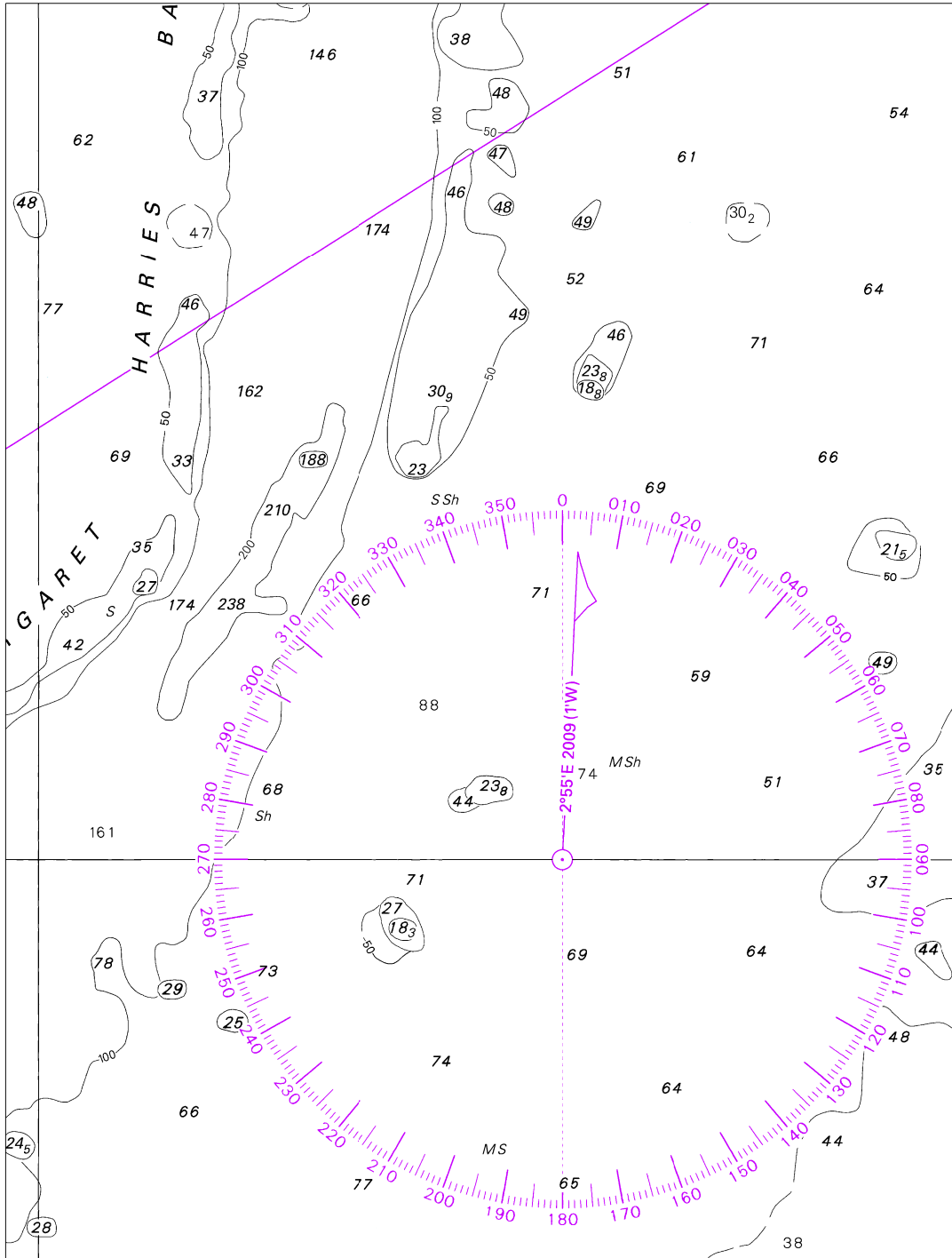


Block for chart Aus 296

© Commonwealth of Australia 2024

(103.3 x 65.3mm)

To accompany Australian Notice to Mariners 807/2024

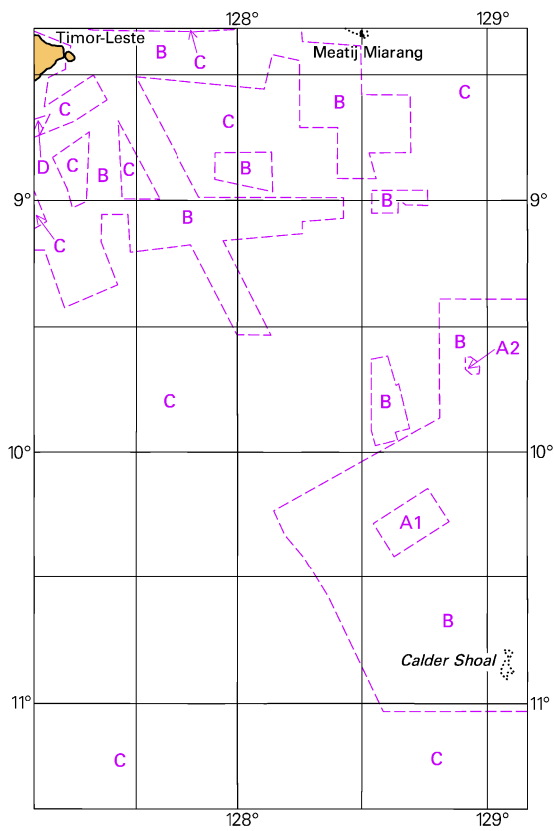


Block for chart Aus 311

© Commonwealth of Australia 2024

(141.5 x 186.9mm)

To accompany Australian Notice to Mariners 807/2024



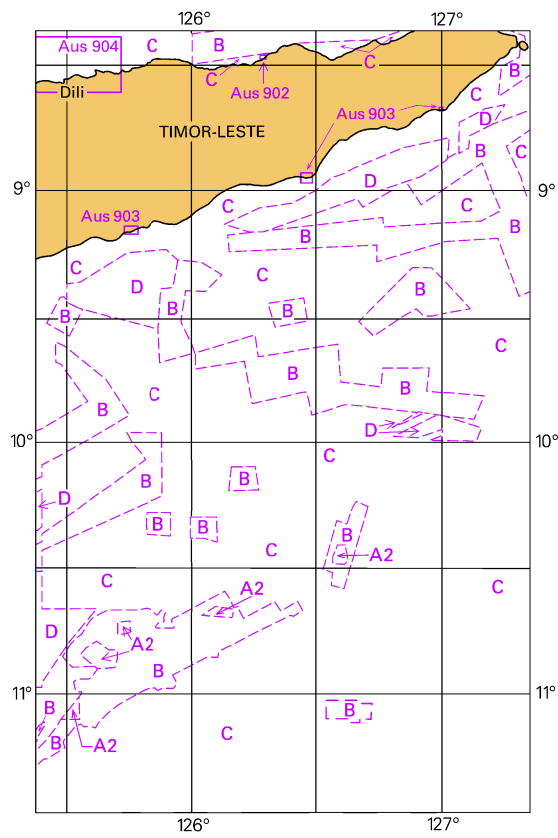
Block for chart Aus 311

(65.3 x 103.3mm)

© Commonwealth of Australia 2024

To accompany Australian Notice to Mariners 808/2024

Zone of Confidence (ZOC) Diagram



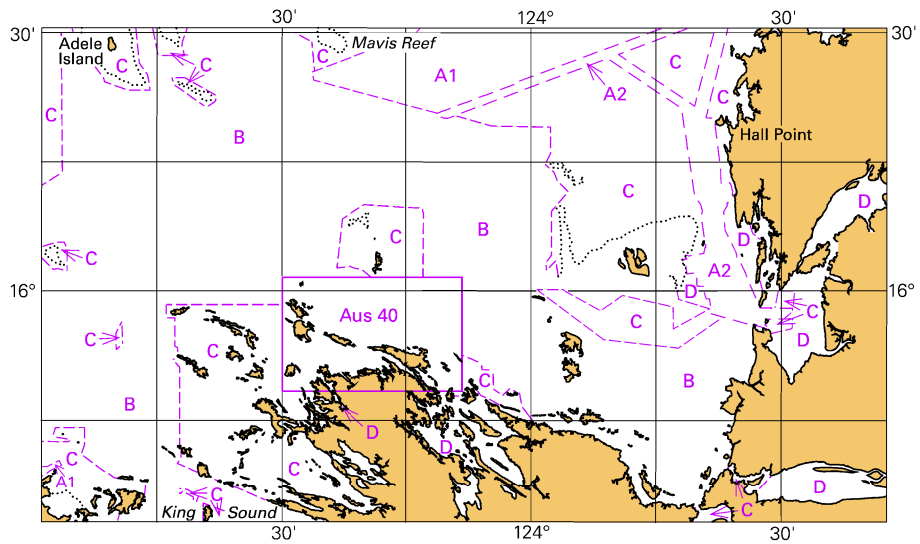
Block for chart Aus 312

(65.3 x 103.4mm)

© Commonwealth of Australia 2024

To accompany Australian Notice to Mariners 810/2024

Zone of Confidence (ZOC) Diagram

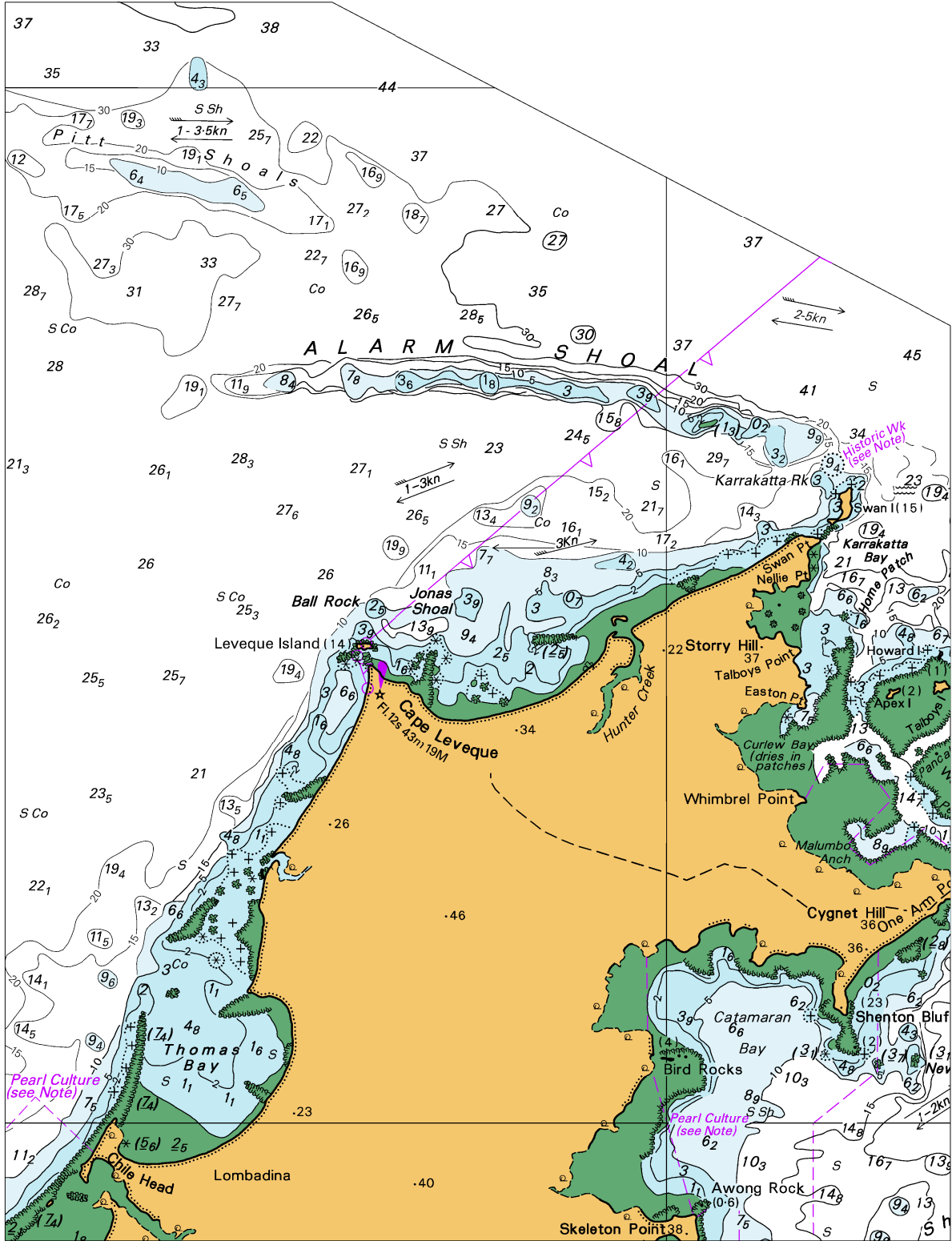


Block for chart Aus 732

© Commonwealth of Australia 2024

(111.8 x 65.3mm)

To accompany Australian Notice to Mariners 810/2024

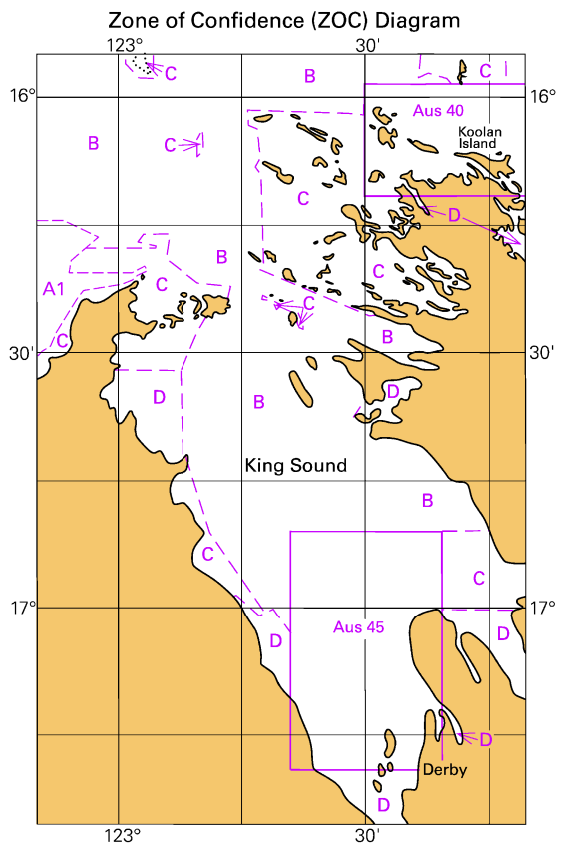


Block for chart Aus 733

© Commonwealth of Australia 2024

(54.0 x 204.6mm)
(156.1 x 649.8mm)

To accompany Australian Notice to Mariners 810/2024

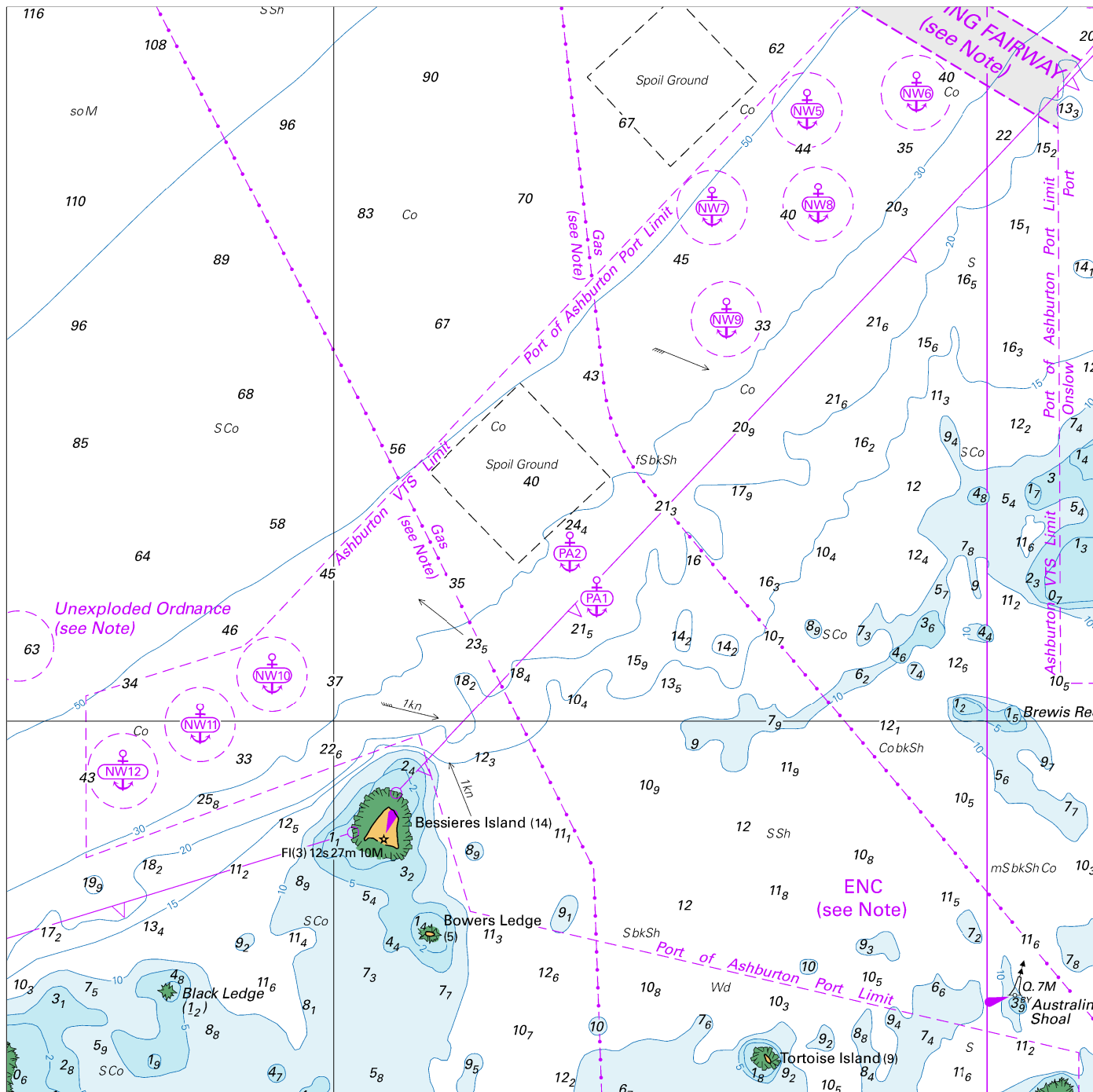


Block for chart Aus 733

(65.0 x 102.0mm)

© Commonwealth of Australia 2024

To accompany Australian Notice to Mariners 811/2024



Block for chart Aus 743

© Commonwealth of Australia 2024

(183.4 x 183.2mm)

