



13 September 2024

Edition 19

AUSTRALIAN NOTICES TO MARINERS

Notices 688 - 726

Published fortnightly by the Australian Hydrographic Office



Australian Notices to Mariners are the authority for correcting charts and publications published by the Australian Hydrographic Office covering Australia, Papua New Guinea, Solomon Islands, Australian Antarctic Territory and Timor-Leste.

Commodore R.L. PHILLIPS RAN
Hydrographer of Australia

SECTIONS.

- I. **Australian Notices to Mariners, including blocks and notes.**
- II. **Hydrographic Reports.**

SUPPLEMENTS.

- I. **Tracings**
 - II. **Cumulative List of Australian Notices to Mariners.**
 - III. **Cumulative List of Temporary and Preliminary Australian Notices to Mariners.**
 - IV. **Temporary and Preliminary Notices in force.**
-
-

© Commonwealth of Australia 2024

This work is copyright. Apart from any use permitted under the Copyright Act 1968, no part may be reproduced by any process, adapted, communicated or commercially exploited without prior written permission from The Commonwealth represented by the Australian Hydrographic Office.

IMPORTANT NOTICE

This edition of Notices to Mariners includes all significant information affecting AHO products which the AHO has become aware of since the last edition. All reasonable efforts have been made to ensure the accuracy and completeness of the information, including third party information, on which these updates are based. The AHO regards third parties from which it receives information as reliable, however the AHO cannot verify all such information and errors may therefore exist. The AHO does not accept liability for errors in third party information.

GENERAL INSTRUCTIONS

The substance of these notices should be inserted on the charts affected.

Bearings are referred to the true compass and are reckoned clockwise from North; those relating to lights are given as seen by an observer from seaward.

Positions quoted in notices relate to WGS84 which is the horizontal datum for all charts produced by the Australian Hydrographic Office.

The range quoted for a light is its nominal range.

Depths are with reference to the chart datum of each chart. Heights are above mean high water springs or mean higher high water, as appropriate.

The capital letter (P) or (T) after the number of any notice denotes a preliminary or temporary notice respectively, which are contained separately at the end of the permanent notices.

REPORTING OF DANGERS

Mariners are particularly requested to notify the AUSTRALIAN HYDROGRAPHIC OFFICE, Locked Bag 8801 Wollongong, NSW 2500 (e-mail datacentre@hydro.gov.au or, alternatively by filling in and submitting the [Hydrographic Notes](#) forms located on the web site – www.hydro.gov.au), immediately on the discovery of new dangers or suspected dangers to navigation. For changes or defects in aids to navigation notify AusSAR (Fax 02-6230 6868 or email rccaus@amsa.gov.au).

AUTHORISED USE

Copies of Australian notices are available free of charge from the Australian Hydrographic Office (AHO) website (www.hydro.gov.au) and through the eNotices (email) service (www.hydro.gov.au/enotices/enotices.htm).

Individual Notices may be copied for the purpose of inserting Notice substance on official charts and publications. Paper copies may be printed by chart agents and distributed to customers on a cost recovery basis. Participating chart agents are listed on the AHO website as providing a 'Paper Notices to Mariners' service (www.hydro.gov.au/prodserv/agents-list.htm). Copies of the notices may not be sold for profit without prior written agreement.

NUMERICAL INDEX OF NOTICES TO MARINERS

Edition No 19

Notices	Aus Chart, INT Chart, ENC Cell, AHP, BA Pubs
688	Aus 20, 204, PNG 545, 554
689	Aus 262, SLB 107
690	Aus 806
691	Aus 810, 811
692	Aus 811
693	Aus 610
694	Aus 198, 200, 808, 809
695	Aus 195, 808
696	Aus 256, 827
697	Aus 260, 822
698	Aus 236
699	Aus 236, 814, 815
700	Aus 814
701	Aus 309
702	Aus 50, 324
703	Aus 325, 4601, 4602, 4603, 4604, 4708, 4722, 4723, INT 601, 602, 603, 604, 708, 722, 723
704	Aus 781
705	Aus 157
706	Aus 487, 800, 802, 4601, INT 601
707(T)	Aus 255
708(T)	Aus 6
709(T)	Aus 814
710(T)	Aus 249, 822, 823
711(T)	Aus 262
712(T)	Aus 25, 309
713(T)	Aus 312
714(T)	Aus 328
715(T)	Aus 319, 320
716(T)	Aus 319, 320
717(T)	Aus 328
718(T)	Aus 327, 328, 742
719(T)	Aus 4723, INT 723
720(T)	Aus 328
721(T)	Aus 327, 328
722(T)	Aus 328, 329, 744
723(T)	Aus 116
724(T)	Aus 136, 778
725(T)	Aus 181
726(T)	SLB 201, 304

NUMERICAL INDEX OF CHARTS AFFECTED

Edition No 19

Aus Chart	Notices
Aus 6	708(T)
Aus 20	688
Aus 25	712(T)
Aus 50	702
Aus 116	723(T)
Aus 136	724(T)
Aus 157	705
Aus 181	725(T)
Aus 195	695
Aus 198	694
Aus 200	694
Aus 204	688
Aus 236	698, 699
Aus 249	710(T)
Aus 255	707(T)
Aus 256	696
Aus 260	697
Aus 262	689, 711(T)
Aus 309	701, 712(T)
Aus 312	713(T)
Aus 319	715(T), 716(T)
Aus 320	715(T), 716(T)
Aus 324	702
Aus 325	703
Aus 327	718(T), 721(T)
Aus 328	714(T), 717(T), 718(T), 720(T), 721(T), 722(T)
Aus 329	722(T)
Aus 487	706
Aus 610	693
Aus 742	718(T)
Aus 744	722(T)
Aus 778	724(T)
Aus 781	704
Aus 800	706
Aus 802	706
Aus 806	690
Aus 808	694, 695
Aus 809	694
Aus 810	691
Aus 811	691, 692
Aus 814	699, 700, 709(T)
Aus 815	699
Aus 822	697, 710(T)
Aus 823	710(T)
Aus 827	696
Aus 4601	703, 706
Aus 4602	703
Aus 4603	703
Aus 4604	703
Aus 4708	703
Aus 4722	703
Aus 4723	703, 719(T)
PNG 545	688
PNG 554	688

Aus Chart	Notices
SLB 107	689
SLB 201	726(T)
SLB 304	726(T)

INT Chart	Notices
INT 601	703, 706
INT 602	703
INT 603	703
INT 604	703
INT 708	703
INT 722	703
INT 723	703, 719(T)

688 AUSTRALIA - Products - New Charts, New Editions, Withdrawn Charts

UKHO , Australian Hydrographic Office

New Charts

<i>Chart</i>	<i>Title and Geographical limits</i>	<i>Scale</i>	<i>Publication Date</i>	<i>Remarks</i>
NIL				

New Electronic Navigation Chart (Aus ENC)

<i>Cell Name</i>	<i>Title</i>	<i>Publication Date</i>	<i>Remarks</i>
NIL			

New Editions and Withdrawn Charts

<i>Chart</i>	<i>Title</i>	<i>Scale</i>	<i>Publication Date</i>	<i>Remarks</i>
Aus 20 (Edition 4)	Australia - North Coast - Northern Territory - Clarence Strait	1:50 000	13 September 2024	New edition with general updating throughout; including new bathymetric data. Chart Aus 20 Edition 3 dated 18 August 2023 is now superseded and must be withdrawn from use.
Aus 204 (Edition 3)	Australia - East Coast - New South Wales - Broken Bay	1:40 000	13 September 2024	New edition with general updating throughout; including new bathymetric data. Chart Aus 204 Edition 2 dated 8 March 2002 is now superseded and must be withdrawn from use.
PNG 545 (Edition 2)	Papua New Guinea - New Britain - New Ireland - Rabaul to Cape Lambert	1:150 000	13 September 2024	New edition with general updating throughout; including new bathymetric data. Chart PNG 545 Edition 1 dated 7 February 2020 is now superseded and must be withdrawn from use.
PNG 554 (Edition 2)	Papua New Guinea - New Britain - New Ireland - Cape St George to Rabaul	1:150 000	13 September 2024	New edition with general updating throughout; including new bathymetric data. Chart PNG 554 Edition 1 dated 20 March 2020 is now superseded and must be withdrawn from use.

Chart permanently withdrawn

Charts listed above as withdrawn no longer meet chart carriage requirements and should be marked as "superseded" and replaced with the new chart/ new edition listed prior to passage through the area covered by the new chart.

When placing orders with a chart agent between notice of forthcoming edition and its publication, mariners should advise whether their order pertains to the current edition or the new edition.

For further details refer to the AHO website at www.hydro.gov.au for new edition and new chart stock arrival information.

689 AUSTRALIA - Products - New Charts and New Editions to be published shortly

Australian Hydrographic Office

New Charts to be published shortly

Chart	Title	Scale	Remarks
NIL			

New Editions to be published shortly

Chart	Title	Scale	Remarks
Aus 262	Australia - East Coast - Queensland - Approaches to Cairns Inset: Trinity Inlet	1:25 000 1:20 000	New edition with general updating throughout; including new bathymetric data.
SLB 107	South Pacific Ocean - Solomon Islands - Plans of the Santa Cruz and adjacent islands Plans: Santa Cruz Islands Utupua Island - Basilisk Harbour Vanikolo Island - Pallu Passage Ndende Island - Graciosa Bay Vanikolo Island - Manieve and Tevai Bays Tikopia Island Anuta or Cherry Island	 1:500 000 1:50 000 1:50 000 1:50 000 1:50 000 1:50 000 1:25 000	New edition with general updating throughout; including new bathymetric data.

690 AUSTRALIA - NEW SOUTH WALES - Bunga Head - Nomenclature

Australian Hydrographic Office

Aus 806 [598/2023]

Amend	name to <i>Mimosa Rocks</i>	36° 35'.3 S	150° 04'.2 E
	name to <i>Picnic Point</i>	36° 36'.9 S	150° 02'.5 E

691 AUSTRALIA - NEW SOUTH WALES - Cape Hawke to Crowdy Head - Depths

Office of Environment and Heritage NSW

Aus 810 [89/2024]

Insert	accompanying block B	32° 06'.0 S	152° 33'.5 E
	accompanying block A	31° 53'.0 S	152° 43'.0 E

Aus 811 [NE 5/7/2024]

Insert	accompanying block A	31° 53'.0 S	152° 43'.0 E
	accompanying block B	31° 50'.3 S	152° 46'.9 E

692 AUSTRALIA - NEW SOUTH WALES - Korogoro Point - Nomenclature

Australian Hydrographic Office

Aus 811 [691/2024]

Amend	name to <i>Big Hill Point</i>	31° 16'.8 S	152° 59'.0 E
Move	name, <i>Hat Head</i> to	31° 03'.6 S 31° 03'.29 S	153° 04'.3 E 153° 04'.39 E
Delete	name, <i>Peaked Rock</i> name, <i>Cliff Peak</i>	31° 03'.3 S 31° 16'.9 S	153° 04'.6 E 152° 57'.3 E

693 AUSTRALIA - NEW SOUTH WALES - Lord Howe Island - Nomenclature

Australian Hydrographic Office

Aus 610 (Lord Howe Island) [NE 9/3/2018]

Insert	name, <i>Flat Rock</i>	31° 29'.19 S	159° 04'.13 E
Amend	name to <i>Clear Place Point</i>	31° 31'.57 S	159° 05'.04 E
	name to <i>Far Rocks</i>	31° 31'.62 S	159° 03'.44 E
	name to <i>Comets Hole</i>	31° 32'.31 S	159° 04'.14 E

Aus 610 (The Lagoon (North)) [NE 9/3/2018]

Amend	name to <i>Far Rocks</i>	31° 31'.62 S	159° 03'.44 E
-------	--------------------------	--------------	---------------

Aus 610 (The Lagoon (South)) [NE 9/3/2018]

Amend	name to <i>Comets Hole</i>	31° 32'.34 S	159° 04'.09 E
-------	----------------------------	--------------	---------------

694 AUSTRALIA - NEW SOUTH WALES - Port Jackson - VTS

Port Authority of New South Wales

Note: position of existing chart notes may vary on certain charts.

Aus 198 [543/2024]

Replace	chart note, SYDNEY VESSEL TRAFFIC SERVICE AREA, with accompanying chart note	33° 58'.3 S	151° 03'.9 E
---------	--	-------------	--------------

Aus 200 [664/2024]

Replace	chart note, SYDNEY VESSEL TRAFFIC SERVICE AREA, with accompanying chart note	33° 53'.3 S	151° 09'.0 E
---------	--	-------------	--------------

Aus 808 [632/2024]

Replace	chart note, SYDNEY VESSEL TRAFFIC SERVICE AREA, with accompanying chart note	34° 01'.0 S	150° 49'.0 E
---------	--	-------------	--------------

Aus 809 [138/2024]

Replace	chart note, SYDNEY VESSEL TRAFFIC SERVICE AREA, with accompanying chart note	32° 49'.8 S	151° 25'.0 E
---------	--	-------------	--------------

695 AUSTRALIA - NEW SOUTH WALES - Port Kembla - Nomenclature

Australian Hydrographic Office

Aus 195 [583/2024]

Amend	name to <i>Flinders Islet</i>	34° 27'.41 S	150° 55'.60 E
	name to <i>Bass Islet</i>	34° 27'.82 S	150° 56'.94 E
	name to <i>Rocky Islet</i>	34° 29'.39 S	150° 55'.23 E
	name to <i>Martin Islet</i>	34° 29'.69 S	150° 56'.47 E

Aus 808 [694/2024]

Amend	name to <i>Martin Islet</i>	34° 29'.8 S	150° 57'.0 E
-------	-----------------------------	-------------	--------------

696 AUSTRALIA - QUEENSLAND - Cleveland Bay - Unexploded ordnance

Australian Hydrographic Office

Note: position of existing chart notes may vary on certain charts.

Aus 256 [548/2024]

Insert	magenta dashed circle with radius 1M, with magenta legend <i>Unexploded Ordnance (see Note)</i> , centred on accompanying chart note, UNEXPLODED ORDNANCE (UXO)	19° 10'.21 S	146° 55'.07 E
		19° 11'.2 S	146° 34'.2 E

Aus 827 [509/2024]

Insert	magenta dashed circle with radius 1M, with magenta legend <i>Unexploded Ordnance (see Note)</i> , centred on	19° 10'.21 S	146° 55'.07 E
--------	--	--------------	---------------

697 AUSTRALIA - QUEENSLAND - Leicester Island - Unexploded ordnance

Australian Hydrographic Office

Note: position of existing chart notes may vary on certain charts.**Aus 260** [520/2023]

Insert	magenta dashed circle with radius 1M, with magenta legend <i>Unexploded Ordnance</i> (see <i>Note</i>), centred on	22° 14'.21 S	150° 25'.06 E
	accompanying chart note, UNEXPLODED ORDNANCE (UXO)	22° 23'.6 S	150° 08'.3 E

Aus 822 [520/2023]

Insert	magenta dashed circle with radius 1M, with magenta legend <i>Unexploded Ordnance</i> (see <i>Note</i>), centred on	22° 14'.21 S	150° 25'.06 E
	accompanying chart note, UNEXPLODED ORDNANCE (UXO)	22° 30'.0 S	149° 41'.0 E

698 AUSTRALIA - QUEENSLAND - Moreton Bay - Nav aids

Maritime Safety Queensland Notice 440/2024

Aus 236 [636/2024]

Delete	light beacon	27° 06'.6 S	153° 07'.3 E
	light buoy	27° 08'.1 S	153° 05'.4 E
	light buoy	27° 08'.1 S	153° 21'.6 E
	light beacon	27° 16'.2 S	153° 06'.4 E
	light buoy	27° 17'.0 S	153° 06'.2 E
	light beacon	27° 21'.7 S	153° 21'.7 E
	notice board	27° 23'.6 S	153° 24'.2 E
	light buoy	27° 23'.9 S	153° 25'.6 E

699 AUSTRALIA - QUEENSLAND - Moreton Island - Cape Moreton - Unexploded ordnance

Australian Hydrographic Office

Aus 236 [698/2024]

Insert	magenta dashed circle with radius 0.5M, centred on	27° 01'.80 S	153° 25'.00 E
	magenta dashed circle with radius 0.5M, centred on	27° 02'.00 S	153° 29'.50 E

Aus 814 [272/2024]

Insert	magenta legend, <i>Unexploded Ordnance</i> (see <i>Note</i>), centred on	27° 01'.59 S	153° 25'.17 E
--------	---	--------------	---------------

Aus 815 [635/2024]

Insert	magenta legend, <i>Unexploded Ordnance</i> (see <i>Note</i>), centred on	27° 01'.59 S	153° 25'.17 E
--------	---	--------------	---------------

700 AUSTRALIA - QUEENSLAND - Surfers Paradise - Obstruction eastwards*Former Notice - 710(T)/2023 is cancelled*

Department of Agriculture and Fisheries

Aus 814 [699/2024]

Insert	depth, 40m, enclosed by danger circle with legend, <i>Obstrn</i>	27° 59'.17 S	153° 35'.96 E
--------	--	--------------	---------------

701 AUSTRALIA - NORTHERN TERRITORY - Melville Island - Depths

Department of Defence

Aus 309 [640/2024]

Insert	accompanying block A	11° 06'.0 S	131° 04'.0 E
	accompanying block B	12° 07'.0 S	130° 59'.0 E

702 AUSTRALIA - WESTERN AUSTRALIA - Broome - Roebuck Bay - Scientific instruments
 Department of Transport PNG Notice 6160/2024

Aus 50 [399/2024]

Insert	depth, 0_2m , enclosed by danger circle with legend, <i>ODAS</i>	17° 59'.64 S	122° 09'.27 E
	depth, 3_9m , enclosed by danger circle with legend, <i>ODAS</i>	18° 00'.23 S	122° 18'.04 E
	depth, 1_1m , enclosed by danger circle with legend, <i>ODAS</i>	18° 00'.89 S	122° 19'.34 E
	depth, 4_2m , enclosed by danger circle with legend, <i>ODAS</i>	18° 01'.52 S	122° 07'.66 E
	depth, 5_4m , enclosed by danger circle with legend, <i>ODAS</i>	18° 02'.23 S	122° 17'.07 E
	depth, 7_5m , enclosed by danger circle with legend, <i>ODAS</i>	18° 02'.24 S	122° 13'.69 E
	depth, 6_8m , enclosed by danger circle with legend, <i>ODAS</i>	18° 03'.64 S	122° 15'.62 E
	depth, 4_2m , enclosed by danger circle with legend, <i>ODAS</i>	18° 03'.64 S	122° 12'.26 E
	depth, 4_8m , enclosed by danger circle with legend, <i>ODAS</i>	18° 04'.00 S	122° 18'.14 E
	depth, 4_1m , enclosed by danger circle with legend, <i>ODAS</i>	18° 04'.76 S	122° 07'.75 E
	depth, $4m$, enclosed by danger circle with legend, <i>ODAS</i>	18° 05'.89 S	122° 16'.70 E
	depth, 1_3m , enclosed by danger circle with legend, <i>ODAS</i>	18° 05'.93 S	122° 20'.26 E

Delete	depth, 1_2m	17° 59'.6 S	122° 09'.2 E
	depth, 4_9m	18° 00'.2 S	122° 18'.0 E
	depth, 5_2m	18° 03'.7 S	122° 12'.3 E
	depth, 5_8m	18° 03'.9 S	122° 18'.1 E

Aus 324 [399/2024]

Insert	depth, 0_2m , enclosed by danger circle with legend, <i>ODAS</i>	17° 59'.64 S	122° 09'.27 E
	depth, 4_2m , enclosed by danger circle with legend, <i>ODAS</i>	18° 01'.52 S	122° 07'.66 E
	depth, 4_2m , enclosed by danger circle with legend, <i>ODAS</i>	18° 04'.76 S	122° 07'.75 E
	depth, $4m$, enclosed by danger circle with legend, <i>ODAS</i>	18° 06'.16 S	122° 15'.73 E
	depth, 1_2m , enclosed by danger circle with legend, <i>ODAS</i>	18° 07'.59 S	122° 17'.45 E
	depth, 1_9m , enclosed by danger circle with legend, <i>ODAS</i>	18° 07'.82 S	122° 14'.86 E
	depth, $1m$, enclosed by danger circle with legend, <i>ODAS</i>	18° 08'.73 S	122° 07'.86 E
	depth, 1_1m , enclosed by danger circle with legend, <i>ODAS</i>	18° 12'.87 S	122° 07'.78 E
	depth, 2_8m , enclosed by danger circle with legend, <i>ODAS</i>	18° 16'.09 S	122° 06'.97 E
	depth, 2_8m , enclosed by danger circle with legend, <i>ODAS</i>	18° 17'.38 S	122° 05'.06 E
	depth, 2_8m , enclosed by danger circle with legend, <i>ODAS</i>	18° 18'.73 S	122° 02'.52 E

Delete	depth, 0_5m	17° 59'.8 S	122° 09'.7 E
	depth, $3m$	18° 04'.9 S	122° 08'.1 E
	depth, 2_1m	18° 09'.0 S	122° 07'.6 E

703 INDIAN OCEAN - CORAL SEA - ESSA limit; anchoring prohibited limit; chart notes

Australian Hydrographic Office

Note: position of existing chart notes may vary on certain charts.

Aus 325 [356/2024]			
Insert	accompanying block A	17° 06'.0 S	119° 35'.0 E
Aus 325 [356/2024]			
Insert	(Lagoon Entrance) accompanying block B	17° 04'.3 S	119° 38'.4 E
Aus 4601 (INT 601) [556/2024]			
Delete	chart note, CURRENTS	36° 49'.0 S	143° 33'.0 E
Aus 4602 (INT 602) [556/2024]			
Replace	chart note, PARTICULARLY SENSITIVE SEA AREA (PSSA), with accompanying chart note	32° 25'.0 S	148° 50'.0 E
Delete	chart note, CURRENTS	29° 50'.0 S	148° 50'.0 E
Aus 4603 (INT 603) [NE 30/8/2024]			
Insert	accompanying chart note, AREA TO BE AVOIDED	21° 22'.0 S	128° 26'.0 E
Replace	chart note, PARTICULARLY SENSITIVE SEA AREA (PSSA), with accompanying chart note	20° 05'.0 S	130° 26'.0 E
Delete	ESSA limit with legend, ESSA (see Note), between	15° 13'.8 S	116° 24'.0 E
		17° 45'.0 S	116° 24'.0 E
		17° 45'.0 S	118° 12'.0 E
		17° 24'.0 S	118° 12'.0 E
		17° 24'.0 S	118° 48'.4 E
		17° 45'.0 S	118° 48'.4 E
		17° 45'.0 S	119° 43'.0 E
		17° 13'.0 S	119° 43'.0 E
		17° 13'.1 S	119° 32'.1 E
		16° 58'.1 S	119° 32'.1 E
		16° 58'.1 S	119° 43'.0 E
		14° 48'.0 S	119° 43'.0 E
		14° 48'.0 S	120° 20'.0 E
		13° 49'.2 S	120° 20'.0 E
		13° 56'.5 S	120° 00'.8 E
		13° 48'.0 S	119° 42'.0 E
		13° 36'.5 S	119° 22'.1 E
		13° 26'.9 S	118° 50'.5 E
		13° 14'.6 S	118° 24'.7 E
		15° 13'.8 S	116° 24'.0 E
		19° 34'.0 S	124° 34'.0 E
	thence SW along the Australia EEZ limit to		
	chart note, CURRENTS		
Aus 4604 (INT 604) [431/2024]			
Replace	chart note, PARTICULARLY SENSITIVE SEA AREA (PSSA), with accompanying chart note in N border	00° 04'.99 N	173° 30'.00 E
Delete	chart note, CURRENTS, in N border	00° 05'.0 N	154° 30'.0 E
Aus 4708 (INT 708) [NE 30/8/2024]			
Delete	ESSA limit with legend, ESSA (see Note), between	17° 45'.0 S	117° 30'.0 E
		17° 45'.0 S	116° 24'.0 E
		15° 13'.8 S	116° 24'.0 E
	thence NE along the Australia EEZ limit to	14° 23'.6 S	117° 30'.0 E
	chart note, CURRENTS	25° 52'.0 S	115° 52'.0 E
Aus 4722 (INT 722) [NE 5/7/2024]			
Insert	ESSA limit with legend, ESSA (see Note), between	15° 13'.8 S	116° 24'.0 E
		17° 45'.0 S	116° 24'.0 E
		17° 45'.0 S	118° 12'.0 E
		17° 24'.0 S	118° 12'.0 E
		17° 24'.0 S	118° 48'.4 E
		17° 45'.0 S	118° 48'.4 E
		17° 45'.0 S	119° 43'.0 E
		14° 48'.0 S	119° 43'.0 E

703	INDIAN OCEAN - CORAL SEA - ESSA limit; anchoring prohibited limit; chart notes		
		14° 48'.0 S	120° 20'.0 E
		13° 49'.2 S	120° 20'.0 E
		13° 56'.5 S	120° 00'.8 E
		13° 48'.0 S	119° 42'.0 E
		13° 36'.5 S	119° 22'.1 E
		13° 26'.9 S	118° 50'.5 E
		13° 14'.6 S	118° 24'.7 E
	thence SW along the Australia EEZ limit to	15° 13'.8 S	116° 24'.0 E
	accompanying chart note, ENVIRONMENTALLY SENSITIVE SEA AREA (ESSA)	19° 52'.0 S	125° 14'.0 E
	accompanying chart note, CABLES	20° 14'.0 S	125° 14'.0 E
Aus 4723 (INT 723) [673/2024]			
Insert	ESSA limit with legend, ESSA (see Note), between	17° 45'.0 S	117° 32'.0 E
		17° 45'.0 S	116° 24'.0 E
		15° 13'.8 S	116° 24'.0 E
	thence NE along the Australia EEZ limit to	14° 23'.6 S	117° 32'.0 E
704	AUSTRALIA - SOUTH AUSTRALIA - Gulf St Vincent - Tapley Shoal - Light beacon		
	Australian Maritime Safety Authority Auscoast Warning 274/2024		
Aus 781 [520/2024]			
Delete	light beacon	35° 01'.6 S	137° 55'.2 E
705	AUSTRALIA - VICTORIA - Port Phillip - Governor Reef - Light beacons		
	Parks Victoria		
Aus 157 [675/2024]			
Replace	beacon with west cardinal light beacon, VQ(9)10s, with topmark	38° 09'.23 S	144° 43'.59 E
	beacon with east cardinal light beacon, Q(3)10s, with topmark	38° 09'.26 S	144° 43'.81 E
706	AUSTRALIA - BASS STRAIT - Bass Pyramid - Begle Rock - Depths		
	Guardian Geomatics		
Aus 487 [NE 19/7/2024]			
Insert	accompanying ZOC diagram	38° 26'.0 S	146° 00'.0 E
	accompanying block	39° 43'.0 S	147° 25'.0 E
Aus 800 [NE 19/7/2024]			
Insert	accompanying block	39° 38'.5 S	147° 44'.5 E
	accompanying ZOC diagram	40° 34'.0 S	147° 39'.0 E
Aus 802 [435/2023]			
Insert	accompanying ZOC diagram	39° 24'.5 S	146° 21'.5 E
	depth, 48m, enclosed by contour	39° 32'.27 S	147° 24'.97 E
Replace	depth, 57m, with depth, 56m	39° 33'.2 S	147° 23'.0 E
Delete	depth, 55m	39° 32'.5 S	147° 25'.0 E
Aus 4601 (INT 601) [703/2024]			
Replace	depth, 55m, with depth, 50m	39° 36'.6 S	147° 19'.0 E
	depth, 2 ₈ m, with depth, 4 ₈ m	39° 44'.8 S	147° 24'.7 E
	depth, 2 ₉ m, with depth, 3 ₂ m	39° 54'.8 S	147° 29'.7 E

707(T)/2024 AUSTRALIA - QUEENSLAND - Abbot Point - Diving operations completed

Former Notice - 558(T)/2024 is cancelled
Maritime Safety Queensland

Cancel this notice on receipt.

Chart formerly affected - Aus 255**708(T)/2024 AUSTRALIA - QUEENSLAND - Karumba - Scientific instruments recovered**

Former Notice - 485(T)/2024 is cancelled
Maritime Safety Queensland

Cancel this notice on receipt.

Chart formerly affected - Aus 6**709(T)/2024 AUSTRALIA - QUEENSLAND - Moreton Bay - Peel Island - Wreck**

Maritime Safety Queensland Notice 459(T)/2024

A wreck marked by a special light buoy, *Fl.Y.2-5s*, exists in position 27° 28'.91 S 153° 17'.47 E.

Mariners are advised to navigate with caution in the area.

Chart temporarily affected - Aus 814**710(T)/2024 AUSTRALIA - QUEENSLAND - Torch Shoal to Mackay - Scientific instruments recovered eastwards**

Former Notice - 648(T)/2024 is cancelled
Maritime Safety Queensland

Cancel this notice on receipt.

Chart formerly affected - Aus 249 - Aus 822 - Aus 823**711(T)/2024 AUSTRALIA - QUEENSLAND - Yorkeys Knob - Shoaling; light buoy**

Maritime Safety Queensland Notice 444(T)/2024

Shoaling exists at the entrance to the marina and is marked by a special light buoy, *Fl.Y.2-5s*, in position 16° 48'.02 S 145° 43'.01 E.

Mariners are advised to navigate with caution in the area.

Chart temporarily affected - Aus 262**712(T)/2024 AUSTRALIA - NORTHERN TERRITORY - Beagle Gulf - South Gutter - Obstruction removed**

Former Notice - 605(T)/2024 is cancelled
MMA Offshore

Cancel this notice on receipt.

Chart formerly affected - Aus 25 - Aus 309**713(T)/2024 AUSTRALIA - TIMOR SEA - Sahul Banks - Subsea operations southwards**

Sapura Energy Australia

Vessel *Sapura Constructor* and a ROV is conducting subsea operations associated with the decommissioning of the Laminaria (10° 37'.81 S 126° 02'.05 E) and Corallina (10° 35'.45 S 125° 59'.19 E) fields.

Mariners are advised to navigate with caution in the area. 0.27M clearance requested.

Chart temporarily affected - Aus 312

714(T)/2024 AUSTRALIA - WESTERN AUSTRALIA - Barrow Island - Drill rig northwestwards
Santos

Drill rig *Ocean Apex* is conducting drilling operations in position 20° 36'.07 S 114° 55'.16 E.

Chart temporarily affected - Aus 328

715(T)/2024 AUSTRALIA - WESTERN AUSTRALIA - Browse Island - Drill rig northwestwards

Former Notice - 612(T)/2024 is cancelled

Australian Maritime Safety Authority Auscoast Warning 264/2024

Drill rig *Noble Deliverer* is conducting drilling operations in position 13° 51'.69 S 123° 16'.41 E.

Chart temporarily affected - Aus 319 - Aus 320

716(T)/2024 AUSTRALIA - WESTERN AUSTRALIA - Browse Island - Survey operations northwards

Department of Transport WA Notice 6173/2024

Vessel *Offshore Solution* is conducting survey operations, with a 750m towed array, between positions 13° 34'.36 S 123° 31'.64 E and 13° 46'.88 S 123° 18'.97 E.

The vessel will display appropriate lights and shapes and monitor VHF Ch 16.

Mariners are advised to navigate with caution in the area and give way to the vessel and towed array.

Chart temporarily affected - Aus 319 - Aus 320

717(T)/2024 AUSTRALIA - WESTERN AUSTRALIA - Dampier Archipelago - Well plug and abandonment works northwestwards

Woodside Energy Ltd

On or about the 21 September 2024, vessel *Deep Orient* will be conducting well plug and abandonment works in the vicinity of positions 19° 39'.08 S 115° 55'.80 E and 19° 44'.74 S 115° 44'.20 E.

A 500m exclusion zone exists around the vessel.

Mariners are advised to navigate with caution in the area.

Chart temporarily affected - Aus 328

718(T)/2024 AUSTRALIA - WESTERN AUSTRALIA - Dampier Archipelago - Well plug and abandonment works northwestwards

Woodside Energy Ltd

On or about 20 September 2024, vessel *Skandi Hercules* will be conducting well plug and abandonment works in the following positions:

19° 30'.31 S 116° 20'.91 E
 19° 30'.37 S 116° 16'.69 E
 19° 34'.04 S 116° 29'.42 E
 19° 37'.00 S 116° 22'.36 E
 19° 38'.94 S 116° 21'.84 E
 19° 39'.80 S 115° 51'.94 E
 19° 44'.28 S 115° 44'.90 E
 19° 44'.72 S 115° 44'.19 E
 19° 50'.00 S 115° 37'.24 E
 19° 52'.73 S 115° 38'.11 E
 20° 04'.23 S 115° 11'.01 E
 20° 05'.14 S 115° 05'.68 E.

A 500m radius exclusion zone exists around the vessel.

Mariners are advised to navigate with caution in the area.

Chart temporarily affected - Aus 327 - Aus 328 - Aus 742

719(T)/2024 AUSTRALIA - WESTERN AUSTRALIA - Exmouth Plateau - Drilling operations

Woodside Energy Ltd

Drill rig *Valaris DPS-1* and support vessels are conducting drilling operations in the following positions:

19° 45'.88 S 113° 14'.46 E
 19° 49'.46 S 113° 13'.14 E
 19° 52'.51 S 113° 06'.69 E
 19° 52'.65 S 113° 13'.41 E
 19° 53'.31 S 113° 10'.06 E
 19° 53'.45 S 113° 08'.73 E
 19° 53'.51 S 113° 08'.73 E
 19° 53'.81 S 113° 06'.92 E.

A subsurface scientific instrument exists on the seabed in each of the above positions.

Mariners are advised to navigate with caution in the area.

Chart temporarily affected - Aus 4723 (INT 723)**720(T)/2024 AUSTRALIA - WESTERN AUSTRALIA - Montebello Islands - Drilling operations completed northwestwards**

Former Notice - 456(T)/2024 is cancelled
 Woodside Energy Ltd

Cancel this notice on receipt.

Chart formerly affected - Aus 328**721(T)/2024 AUSTRALIA - WESTERN AUSTRALIA - Montebello Islands - Survey operations complete**

Former Notice - 617(T)/2024 is cancelled
 EGS Survey Pty Ltd

Cancel this notice on receipt.

Chart formerly affected - Aus 327 - Aus 328**722(T)/2024 AUSTRALIA - WESTERN AUSTRALIA - Thevenard Island to Muiron Islands - Subsea operations completed northwestwards**

Former Notice - 572(T)/2024 is cancelled
 Sapura Energy Australia

Cancel this notice on receipt.

Chart formerly affected - Aus 328 - Aus 329 - Aus 744**723(T)/2024 AUSTRALIA - WESTERN AUSTRALIA - Warnbro Sound - First Rock - Scientific instrument recovered**

Former Notice - 458(T)/2024 is cancelled
 Department of Transport WA

Cancel this notice on receipt.

Chart formerly affected - Aus 116**724(T)/2024 AUSTRALIA - SOUTH AUSTRALIA - Spencer Gulf - Port Bonython - Light buoy off station**

Department for Infrastructure and Transport SA Notice 50(T)/2024

The starboard lateral light buoy, *Fl.G.2s No5* (33° 02'.80 S 137° 45'.43 E), is off station.**Chart temporarily affected - Aus 136 - Aus 778**

725(T)/2024 AUSTRALIA - VICTORIA - Corner Inlet - Toora Channel - Light beacon destroyed
Gippsland Ports Notice 357/2024

The port lateral light beacon, *Fl.R.4s No6* (38° 43'.86 S 146° 22'.81 E), has been destroyed.

Mariners are advised to navigate with caution in the area.

Chart temporarily affected - Aus 181

726(T)/2024 SOLOMON ISLANDS - Florida Islands - Nggela Sule - Tuituhi Point - Light beacon unlit
Solomon Islands Maritime Authority Notice 13(T)/2024

The light beacon, *Fl(3)20s 10m 10M* (9° 08'.57 S 160° 13'.74 E), is unlit.

Chart temporarily affected - SLB 201 - SLB 304

II

HYDROGRAPHIC REPORTS

NIL

To accompany Australian Notice to Mariners 694/2024

SYDNEY VESSEL TRAFFIC SERVICE AREA
For entry into Sydney Harbour, vessels approaching Port Jackson are to contact Sydney Vessel Traffic Services (Call Sign Sydney VTS) on VHF channel 12, two hours prior to arrival off port limits.
For entry into Botany Bay, vessels approaching Port Botany are to contact Sydney Vessel Traffic Services (Call Sign Sydney VTS) on VHF channel 12, two hours prior to arrival off port limits.

Note for chart Aus 198

To accompany Australian Notice to Mariners 694/2024

SYDNEY VESSEL TRAFFIC SERVICE AREA
For entry into Sydney Harbour, vessels approaching Port Jackson are to contact Sydney Vessel Traffic Services (Call Sign Sydney VTS) on VHF channel 12, two hours prior to arrival off port limits.
For entry into Botany Bay, vessels approaching Port Botany are to contact Sydney Vessel Traffic Services (Call Sign Sydney VTS) on VHF channel 12, two hours prior to arrival off port limits.

Note for chart Aus 808

To accompany Australian Notice to Mariners 696/2024

UNEXPLODED ORDNANCE (UXO)
The area is safe for surface navigation only; it is not safe for anchoring, trawling or seabed activities. For details see Mariners Handbook for Australian Waters AHP 20.

Note for chart Aus 256

To accompany Australian Notice to Mariners 697/2024

UNEXPLODED ORDNANCE (UXO)
The area is safe for surface navigation only; it is not safe for anchoring, trawling or seabed activities. For details see Mariners Handbook for Australian Waters AHP 20.

Note for chart Aus 822

To accompany Australian Notice to Mariners 703/2024

PARTICULARLY SENSITIVE SEA AREA (PSSA)
The area shown is an IMO approved Particularly Sensitive Sea Area (PSSA). For details see Mariners Handbook for Australian Waters AHP 20.

Note for chart Aus 4603

To accompany Australian Notice to Mariners 694/2024

SYDNEY VESSEL TRAFFIC SERVICE AREA
For entry into Sydney Harbour, vessels approaching Port Jackson are to contact Sydney Vessel Traffic Services (Call Sign Sydney VTS) on VHF channel 12, two hours prior to arrival off port limits.
For entry into Botany Bay, vessels approaching Port Botany are to contact Sydney Vessel Traffic Services (Call Sign Sydney VTS) on VHF channel 12, two hours prior to arrival off port limits.

Note for chart Aus 200

To accompany Australian Notice to Mariners 694/2024

SYDNEY VESSEL TRAFFIC SERVICE AREA
For entry into Sydney Harbour, vessels approaching Port Jackson are to contact Sydney Vessel Traffic Services (Call Sign Sydney VTS) on VHF channel 12, two hours prior to arrival off port limits.
For entry into Botany Bay, vessels approaching Port Botany are to contact Sydney Vessel Traffic Services (Call Sign Sydney VTS) on VHF channel 12, two hours prior to arrival off port limits.

Note for chart Aus 809

To accompany Australian Notice to Mariners 697/2024

UNEXPLODED ORDNANCE (UXO)
The area is safe for surface navigation only; it is not safe for anchoring, trawling or seabed activities. For details see Mariners Handbook for Australian Waters AHP 20.

Note for chart Aus 260

To accompany Australian Notice to Mariners 703/2024

PARTICULARLY SENSITIVE SEA AREA (PSSA)
The area shown is an IMO approved Particularly Sensitive Sea Area (PSSA). For details see Mariners Handbook for Australian Waters AHP 20.

Note for chart Aus 4602

To accompany Australian Notice to Mariners 703/2024

AREA TO BE AVOIDED
Transiting ships should not enter the IMO-adopted Area to be avoided. Ships may enter and visit a location within the Area to be avoided if there is an operational requirement to do so.

Note for chart Aus 4603

To accompany Australian Notice to Mariners 703/2024

PARTICULARLY SENSITIVE SEA AREA
(PSSA)

The area shown is an IMO approved Particularly Sensitive Sea Area (PSSA). For details see Mariners Handbook for Australian Waters AHP 20.

Note for chart Aus 4604

To accompany Australian Notice to Mariners 703/2024

CABLES

Only transoceanic cables are shown on this chart.

Note for chart Aus 4722

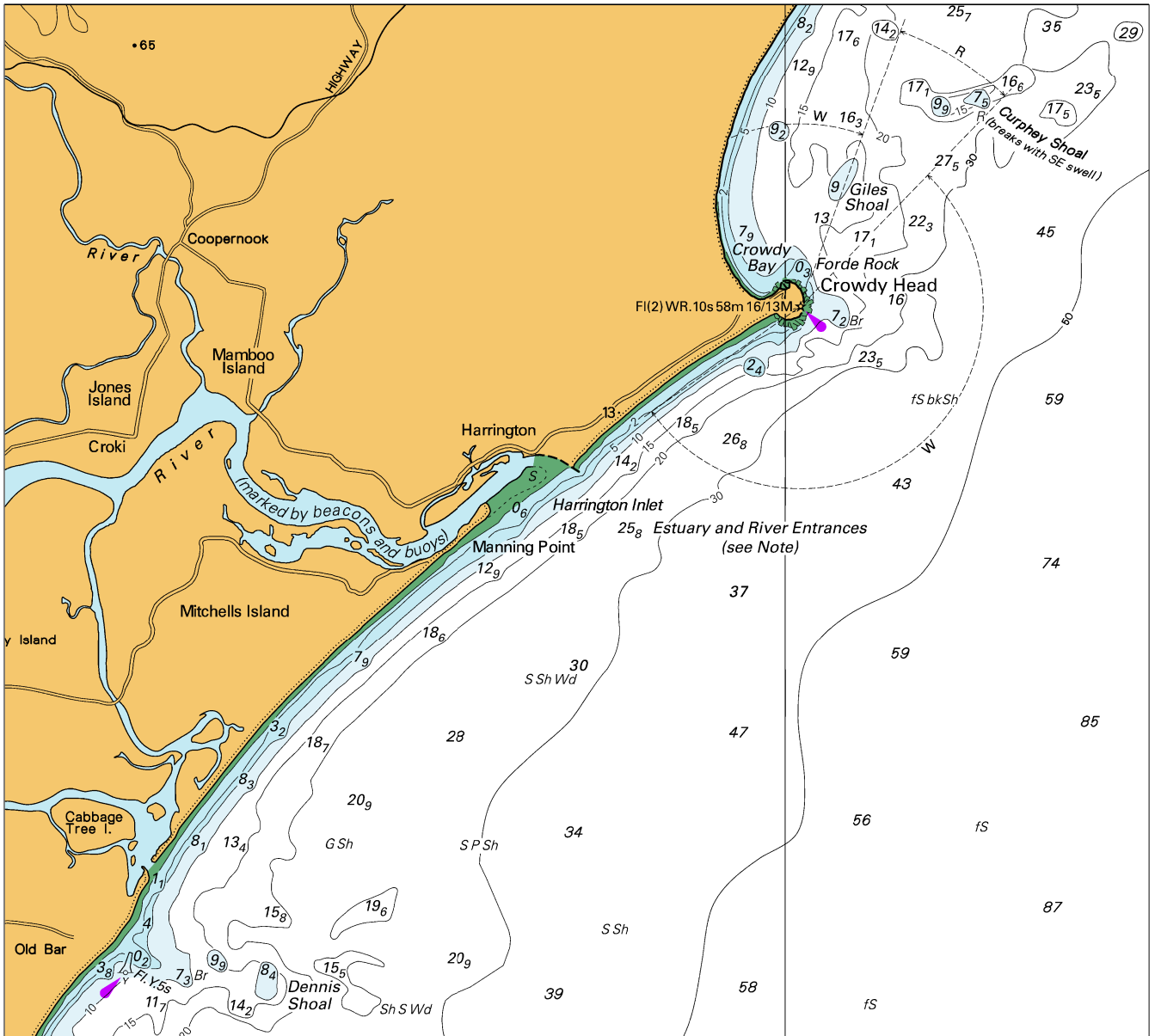
To accompany Australian Notice to Mariners 703/2024

ENVIRONMENTALLY SENSITIVE SEA AREA
(ESSA)

Areas of this chart are Environmentally Sensitive Sea Areas (ESSA). Areas within this marine protected area have restrictions on access and activities. For details see Mariners Handbook for Australian Waters AHP 20.

Note for chart Aus 4722

To accompany Australian Notice to Mariners 691/2024

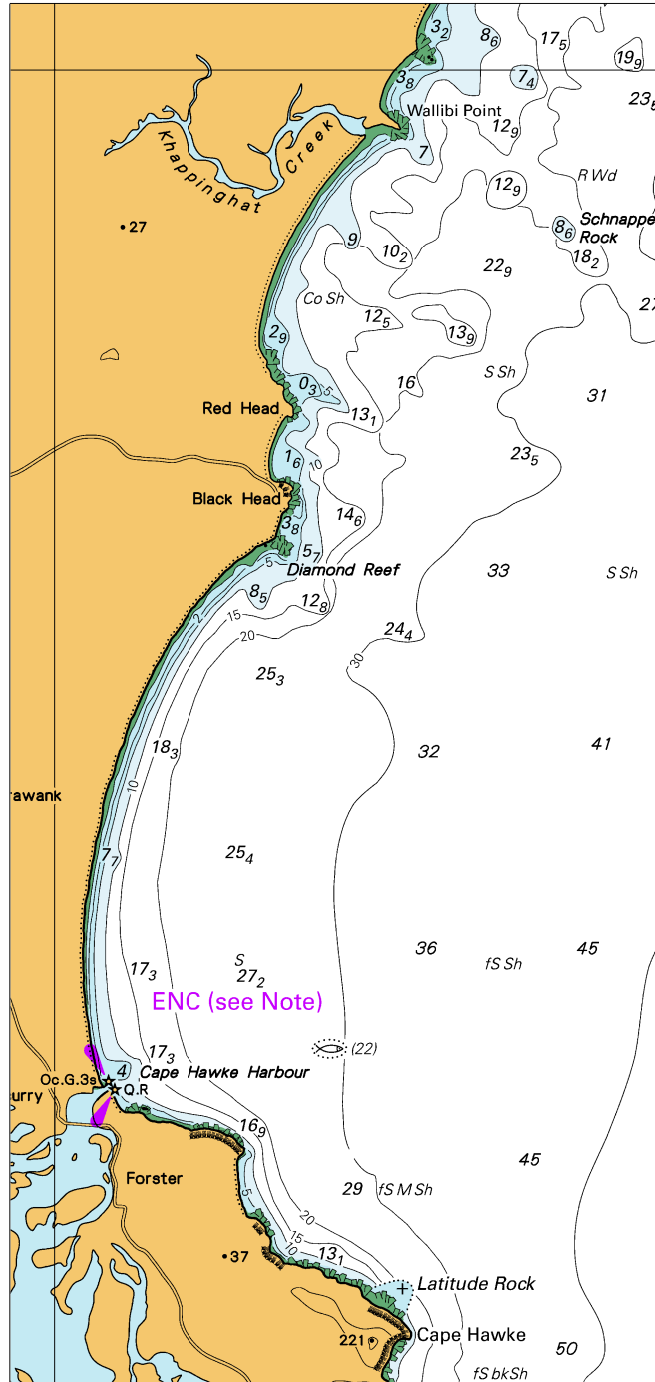


Block A for chart Aus 810

© Commonwealth of Australia 2024

(176.0 x 159.1mm)

To accompany Australian Notice to Mariners 691/2024

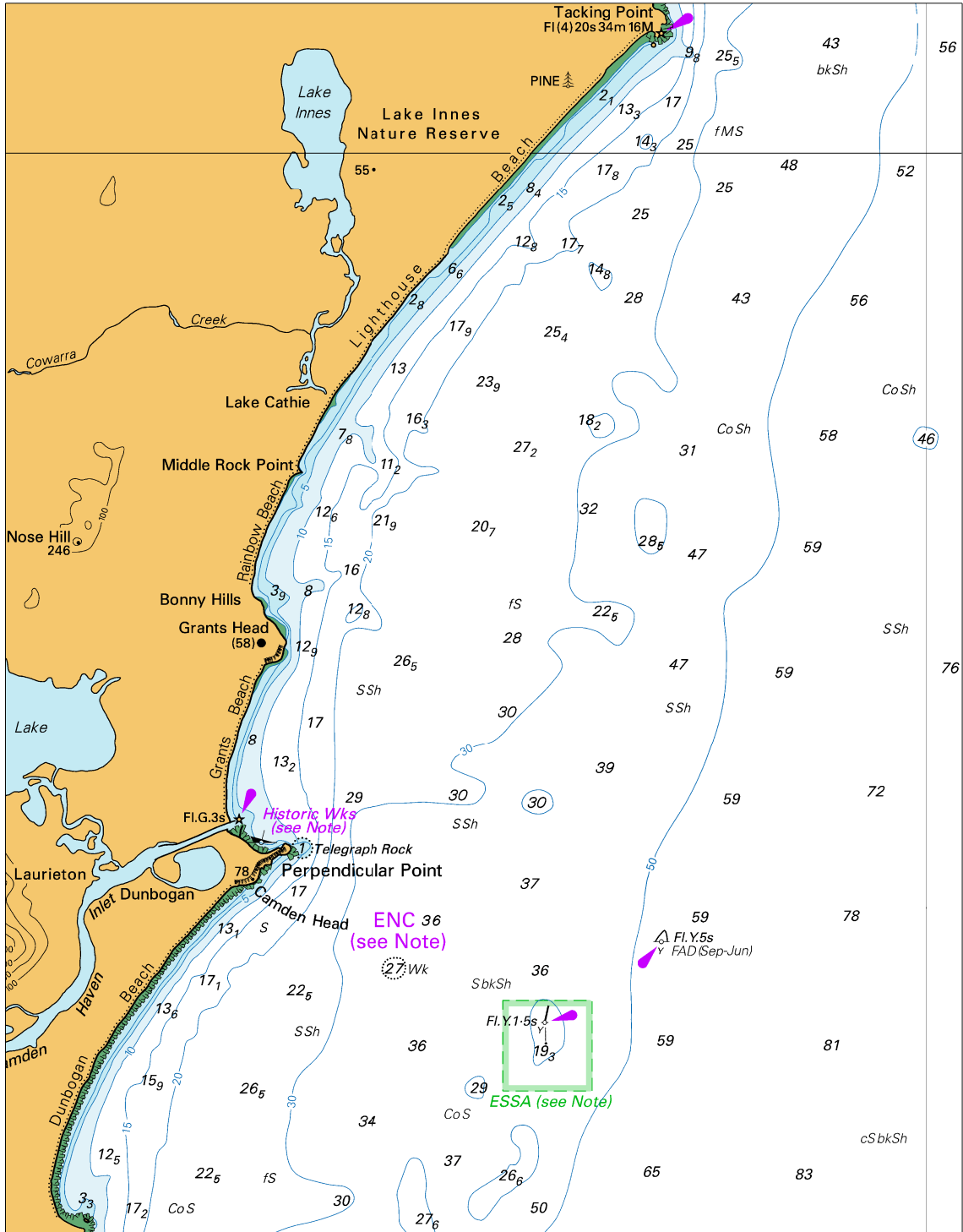


Block B for chart Aus 810

(86.6 x 182.5mm)

© Commonwealth of Australia 2024

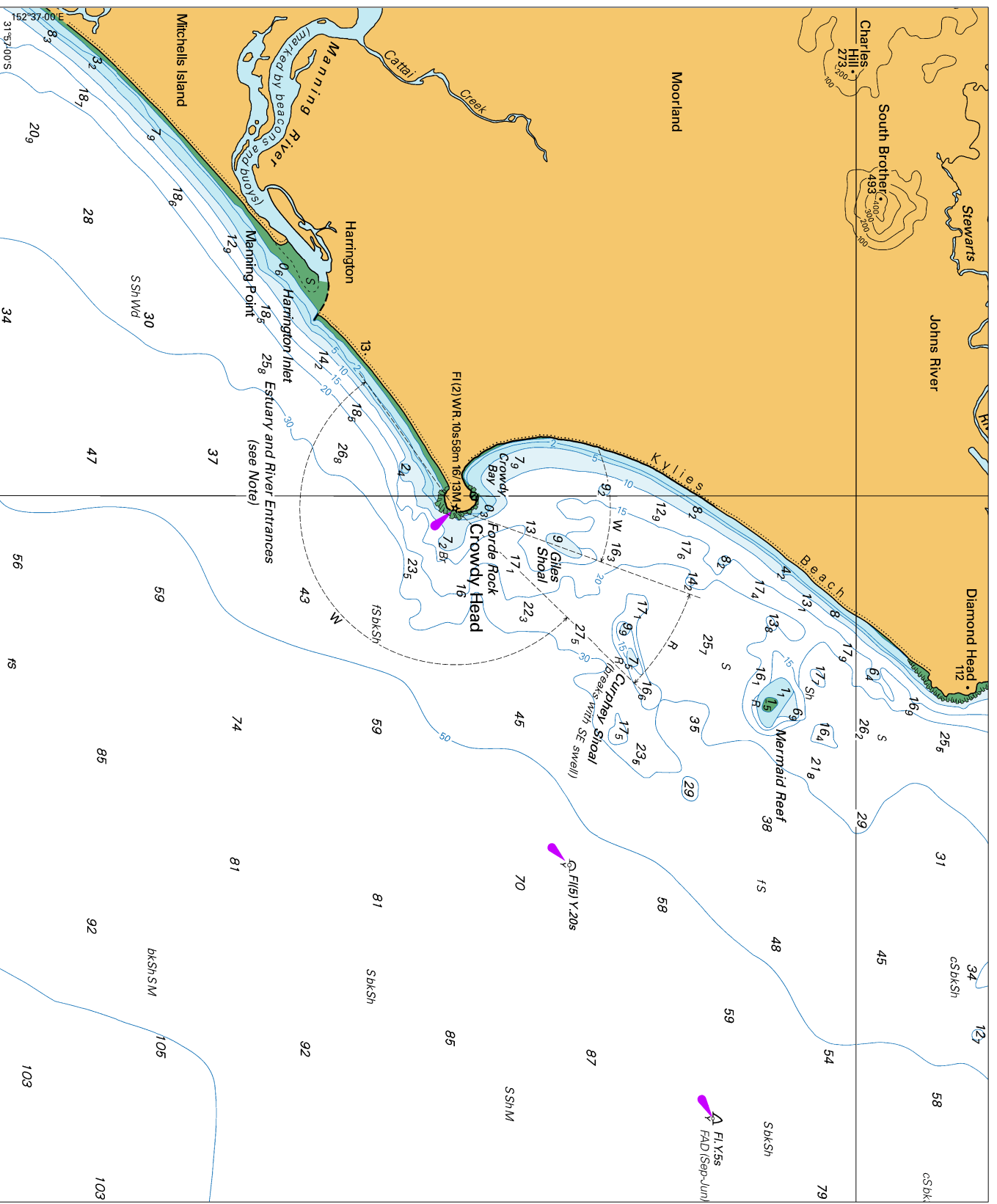
To accompany Australian Notice to Mariners 691/2024



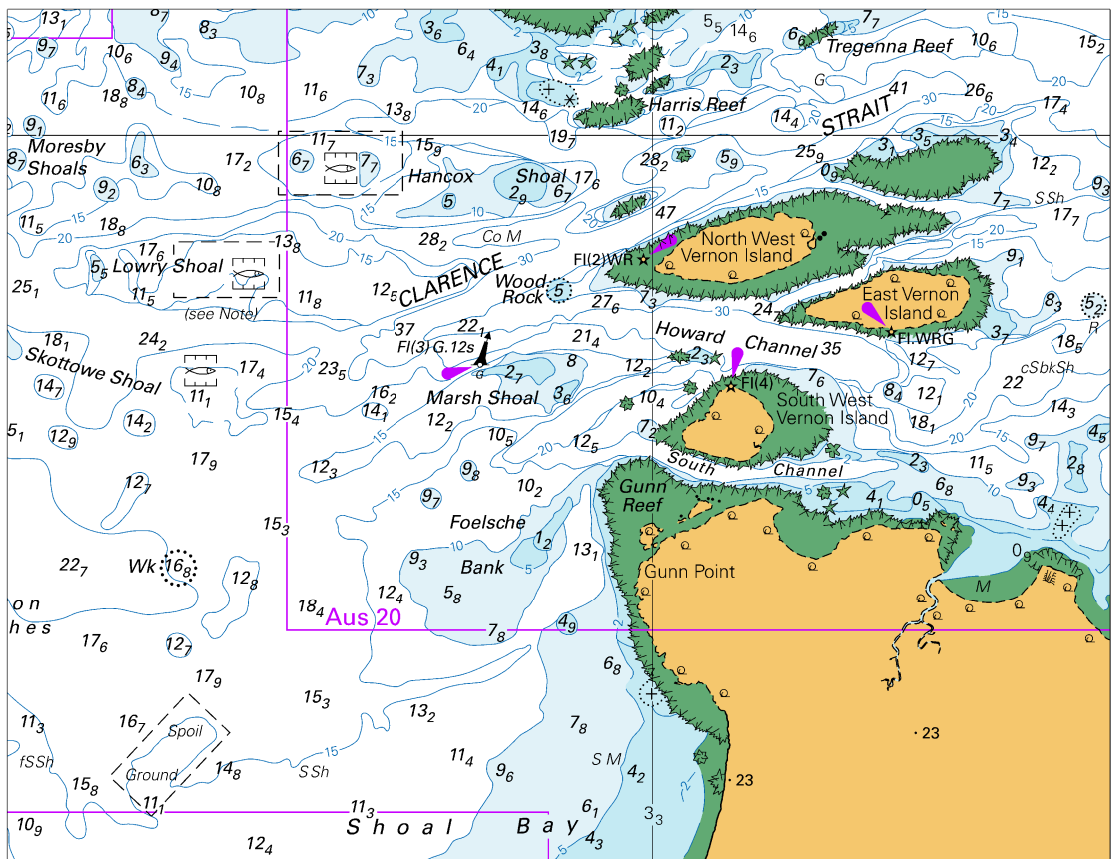
Block A for chart Aus 811

© Commonwealth of Australia 2024

(149.8 x 192.7mm)



To accompany Australian Notice to Mariners 701/2024

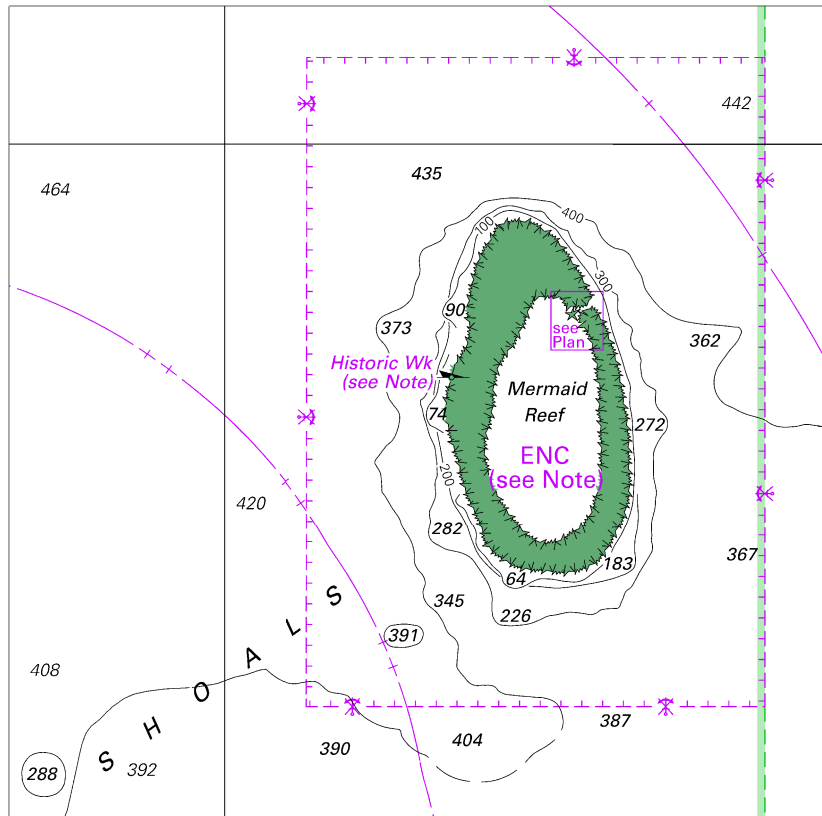


Block B for chart Aus 309

© Commonwealth of Australia 2024

(145-8 x 112-4mm)

To accompany Australian Notice to Mariners 703/2024

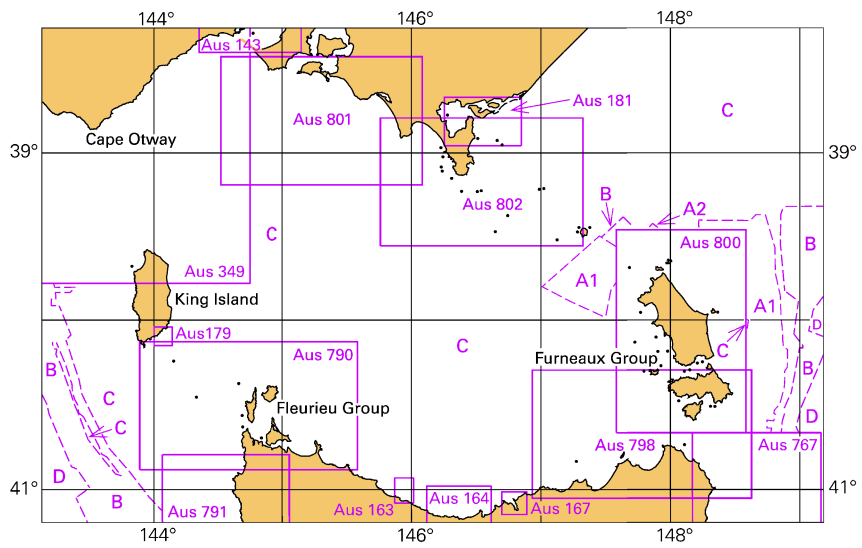


Block A for chart Aus 325

(107.8 x 107.2mm)

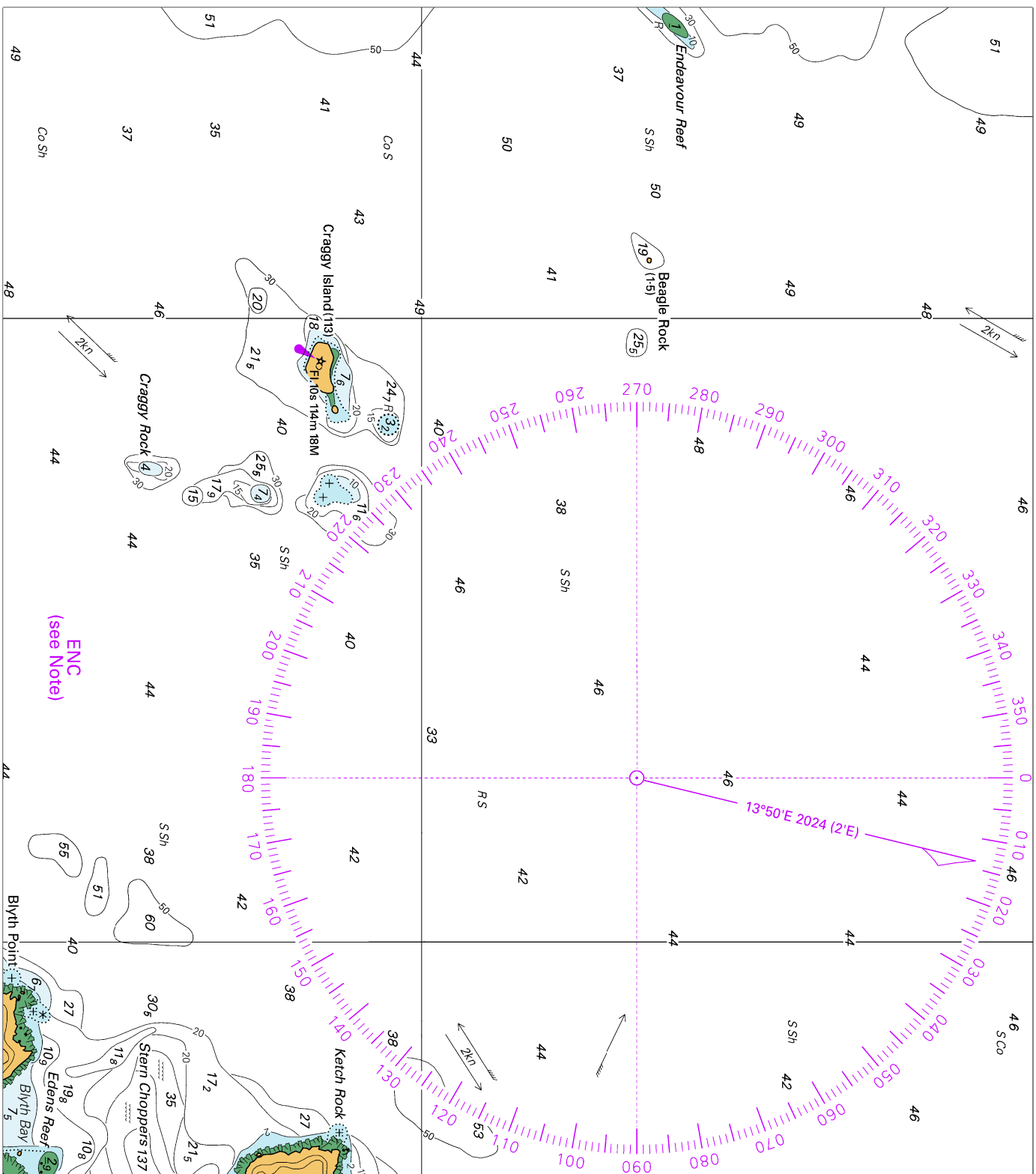
© Commonwealth of Australia 2024

To accompany Australian Notice to Mariners 706/2024

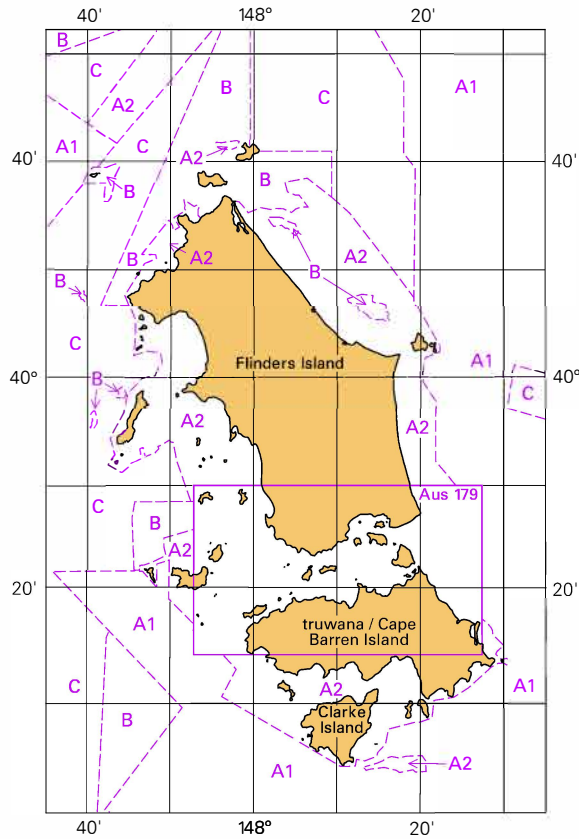


Block for chart Aus 487 © Commonwealth of Australia 2024

(103.4 x 65.4mm)



To accompany Australian Notice to Mariners 706/2024

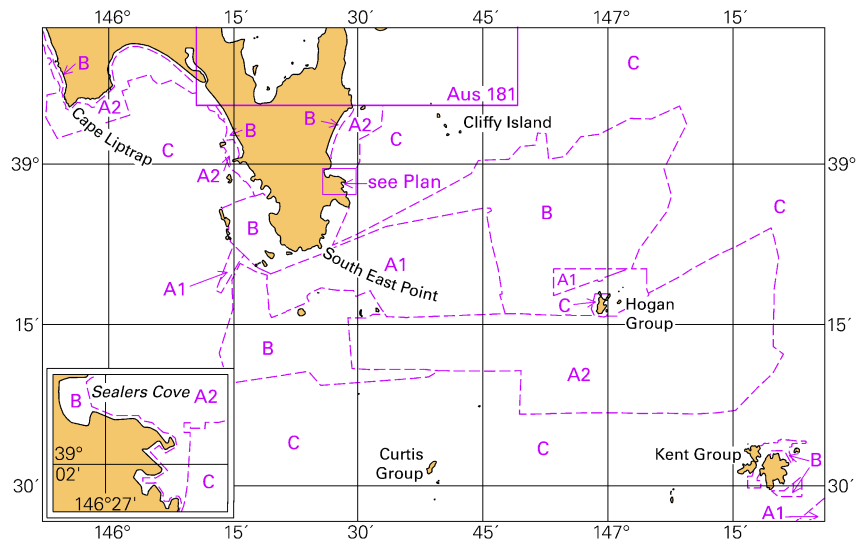


Block for chart Aus 800

(66.0 x 103.5mm)

© Commonwealth of Australia 2024

To accompany Australian Notice to Mariners 706/2024



Block for chart Aus 802 © Commonwealth of Australia 2024

(103.5 x 65.4mm)