



16 May 2025

Edition 10

# AUSTRALIAN NOTICES TO MARINERS

## Notices 383 - 425

Published fortnightly by the Australian Hydrographic Office



Australian Notices to Mariners are the authority for correcting charts and publications published by the Australian Hydrographic Office covering Australia, Papua New Guinea, Solomon Islands, Australian Antarctic Territory and Timor-Leste.

Commodore R.L. PHILLIPS RAN  
*Hydrographer of Australia*

---

### SECTIONS.

- I. **Australian Notices to Mariners, including blocks and notes.**
- II. **Hydrographic Reports.**

### SUPPLEMENTS.

- I. **Tracings**
  - II. **Cumulative List of Australian Notices to Mariners.**
  - III. **Cumulative List of Temporary and Preliminary Australian Notices to Mariners.**
  - IV. **Temporary and Preliminary Notices in force.**
- 
- 

© Commonwealth of Australia 2025

This work is copyright. Apart from any use permitted under the Copyright Act 1968, no part may be reproduced by any process, adapted, communicated or commercially exploited without prior written permission from The Commonwealth represented by the Australian Hydrographic Office.

## IMPORTANT NOTICE

This edition of Notices to Mariners includes all significant information affecting AHO products which the AHO has become aware of since the last edition. All reasonable efforts have been made to ensure the accuracy and completeness of the information, including third party information, on which these updates are based. The AHO regards third parties from which it receives information as reliable, however the AHO cannot verify all such information and errors may therefore exist. The AHO does not accept liability for errors in third party information.

---

## GENERAL INSTRUCTIONS

The substance of these notices should be inserted on the charts affected.

Bearings are referred to the true compass and are reckoned clockwise from North; those relating to lights are given as seen by an observer from seaward.

Positions quoted in notices relate to WGS84 which is the horizontal datum for all charts produced by the Australian Hydrographic Office.

The range quoted for a light is its nominal range.

Depths are with reference to the chart datum of each chart. Heights are above mean high water springs or mean higher high water, as appropriate.

The capital letter (P) or (T) after the number of any notice denotes a preliminary or temporary notice respectively, which are contained separately at the end of the permanent notices.

---

## REPORTING OF DANGERS

Mariners are particularly requested to notify the AUSTRALIAN HYDROGRAPHIC OFFICE, Locked Bag 8801 Wollongong, NSW 2500 (e-mail [datacentre@hydro.gov.au](mailto:datacentre@hydro.gov.au) or, alternatively by filling in and submitting the [Hydrographic Notes](#) forms located on the web site – [www.hydro.gov.au](http://www.hydro.gov.au)), immediately on the discovery of new dangers or suspected dangers to navigation. For changes or defects in aids to navigation notify AusSAR (Fax 02-6230 6868 or email [rccaus@amsa.gov.au](mailto:rccaus@amsa.gov.au)).

---

## AUTHORISED USE

Copies of Australian notices are available free of charge from the Australian Hydrographic Office (AHO) website ([www.hydro.gov.au](http://www.hydro.gov.au)) and through the eNotices (email) service ([www.hydro.gov.au/enotices/enotices.htm](http://www.hydro.gov.au/enotices/enotices.htm)).

Individual Notices may be copied for the purpose of inserting Notice substance on official charts and publications. Paper copies may be printed by chart agents and distributed to customers on a cost recovery basis. Participating chart agents are listed on the AHO website as providing a 'Paper Notices to Mariners' service ([www.hydro.gov.au/prodserv/agents-list.htm](http://www.hydro.gov.au/prodserv/agents-list.htm)). Copies of the notices may not be sold for profit without prior written agreement.

## NUMERICAL INDEX OF NOTICES TO MARINERS

### Edition No 10

Notices	Aus Chart, INT Chart, ENC Cell, AHP, BA Pubs
383	Products - New Charts, New Editions, Withdrawn Charts
384	Aus 292, 293, 597, 605, 839, 841, INT 7746
385	Aus 195
386	Aus 195, 806, 809, 812
387	Aus 807
388	Aus 198
389	Aus 200
390	Aus 245, 246, 819
391	Aus 828
392	Aus 248
393	PNG 502
394	Aus 841
395	Aus 299
396	Aus 25
397	Aus 25, 309
398	Aus 50
399	Aus 74, 331
400	Aus 119, 762, 763
401	Aus 116, 337
402	Aus 157
403	Aus 151
404	Aus 151, 801
405	Aus 171, 173, 796
406(T)	Aus 255, 268, 825, 826, 4602, 4603, 4604, INT 602, 603, 604
407(T)	Aus 249, 823
408(T)	Aus 303
409(T)	Aus 833, 834
410(T)	Aus 814
411(T)	PNG 392, 393, 543, 666
412(T)	Aus 25, 26, 309, 316
413(T)	Aus 312
414(T)	Aus 50
415(T)	Aus 328, 329, 745
416(T)	Aus 73
417(T)	Aus 57, 60
418(T)	Aus 327, 742
419(T)	Aus 64
420(T)	Aus 357, 487, 4601, INT 601
421(T)	Aus 357, 487
422(T)	Aus 349
423(T)	Aus 157
424(T)	Aus 163
425(T)	SLB 303, 304

## NUMERICAL INDEX OF CHARTS AFFECTED

### Edition No 10

Aus Chart	Notices
Aus 25	396, 397, 412(T)
Aus 26	412(T)
Aus 50	398, 414(T)
Aus 57	417(T)
Aus 60	417(T)
Aus 64	419(T)
Aus 73	416(T)
Aus 74	399
Aus 116	401
Aus 119	400
Aus 151	403, 404
Aus 157	402, 423(T)
Aus 163	424(T)
Aus 171	405
Aus 173	405
Aus 195	385, 386
Aus 198	388
Aus 200	389
Aus 245	390
Aus 246	390
Aus 248	392
Aus 249	407(T)
Aus 255	406(T)
Aus 268	406(T)
Aus 292	384
Aus 293	384
Aus 299	395
Aus 303	408(T)
Aus 309	397, 412(T)
Aus 312	413(T)
Aus 316	412(T)
Aus 327	418(T)
Aus 328	415(T)
Aus 329	415(T)
Aus 331	399
Aus 337	401
Aus 349	422(T)
Aus 357	420(T), 421(T)
Aus 487	420(T), 421(T)
Aus 597	384
Aus 605	384
Aus 742	418(T)
Aus 745	415(T)
Aus 762	400
Aus 763	400
Aus 796	405
Aus 801	404
Aus 806	386
Aus 807	387
Aus 809	386
Aus 812	386
Aus 814	410(T)
Aus 819	390
Aus 823	407(T)

Aus Chart	Notices
Aus 825	406(T)
Aus 826	406(T)
Aus 828	391
Aus 833	409(T)
Aus 834	409(T)
Aus 839	384
Aus 841	384, 394
Aus 4601	420(T)
Aus 4602	406(T)
Aus 4603	406(T)
Aus 4604	406(T)
PNG 392	411(T)
PNG 393	411(T)
PNG 502	393
PNG 543	411(T)
PNG 666	411(T)
SLB 303	425(T)
SLB 304	425(T)

INT Chart	Notices
INT 7746	384
INT 601	420(T)
INT 602	406(T)
INT 603	406(T)
INT 604	406(T)

**383 AUSTRALIA - Products - New Charts, New Editions, Withdrawn Charts**

Australian Hydrographic Office , UKHO

**New Charts**

<i>Chart</i>	<i>Title and Geographical limits</i>	<i>Scale</i>	<i>Publication Date</i>	<i>Remarks</i>
NIL				

**New Electronic Navigation Chart (Aus ENC)**

<i>Cell Name</i>	<i>Title</i>	<i>Publication Date</i>	<i>Remarks</i>
AU5HIS01	Australia - Queensland - Great Barrier Reef - Hook and Hayman Islands (Stonehaven Anchorage)	5/5/2025	AU5254P2 is withdrawn.
AU5RTS01	Australia - Western Australia - Rottneest Island	8/5/2025	

**New Editions and Withdrawn Charts**

<i>Chart</i>	<i>Title</i>	<i>Scale</i>	<i>Publication Date</i>	<i>Remarks</i>
NIL				

**Admiralty publication**

<i>NP No</i>	<i>Title</i>	<i>Date</i>	<i>Remarks</i>
NP36 & e-NP36	Admiralty Sailing Directions. Indonesia Pilot Volume 1 (12th Edition) 2025.	1/5/2025	The 11th Edition 2021 of NP36 is cancelled.

**Chart permanently withdrawn**

Charts listed above as withdrawn no longer meet chart carriage requirements and should be marked as "superseded" and replaced with the new chart/ new edition listed prior to passage through the area covered by the new chart.

When placing orders with a chart agent between notice of forthcoming edition and its publication, mariners should advise whether their order pertains to the current edition or the new edition.

For further details refer to the AHO website at [www.hydro.gov.au](http://www.hydro.gov.au) for new edition and new chart stock arrival information.

**384 AUSTRALIA - Products - New Charts and New Editions to be published shortly**

Australian Hydrographic Office

**New Charts to be published shortly**

Chart	Title	Scale	Remarks
NIL			

**New Editions to be published shortly**

Chart	Title	Scale	Remarks
Aus 292	Australia - Torres Strait - Queensland - Whyborn Reef to Twin Island	1:75 000	New edition with general updating throughout; including latest bathymetric data.
Aus 293	Australia - North Coast - Torres Strait - Prince of Wales Channel	1:37 500	New edition with general updating throughout; including latest bathymetric data.
Aus 597 (INT 7746)	Australia - Southern Ocean - Approaches to Heard Island	1:1 500 000	New edition with general updating throughout; including new ESSA limits.
Aus 605	Australia - Southern Ocean - Heard and McDonald Islands Plan: Atlas Cove	1:150 000 1:45 000	New edition with general updating throughout; including new ESSA limits.
Aus 839	Australia - East Coast - Queensland - Cairncross Islets to Arden Island	1:150 000	New edition with general updating throughout; including latest bathymetric data.
Aus 841	Australia - Papua New Guinea - Torres Strait - Kirkcaldie Reef to Boigu Island	1:150 000	New edition with general updating throughout; including latest bathymetric data.

**385 AUSTRALIA - NEW SOUTH WALES - Bellambi Point - Light**

Transport for NSW

**Aus 195 [116/2025]**

Amend	light to <i>F.WRG.5M</i>	34° 22'.11 S	150° 55'.56 E
-------	--------------------------	--------------	---------------

**386 AUSTRALIA - NEW SOUTH WALES - Green Cape to Coffs Harbour - Scientific instruments**

Department of Climate Change, Energy, the Environment and Water

**Aus 195 [385/2025]**

Move	light buoy	34° 28'.58 S	151° 01'.55 E
	to	34° 28'.467 S	151° 01'.617 E

**Aus 806 [804/2024]**

Move	light buoy	37° 15'.9 S	150° 11'.6 E
	to	37° 15'.28 S	150° 11'.67 E

**Aus 809 [353/2025]**

Move	light buoy	33° 46'.4 S	151° 24'.7 E
	to	33° 45'.22 S	151° 25'.90 E

**Aus 812 [731/2024]**

Move	light buoy	30° 22'.1 S	153° 16'.7 E
	to	30° 21'.30 S	153° 16'.70 E

**387 AUSTRALIA - NEW SOUTH WALES - Malua Bay - Nomenclature**

Transport for NSW

**Aus 807 [3/2025]**Amend name to *Malua Head* 35° 47'.3 S 150° 13'.3 E**388 AUSTRALIA - NEW SOUTH WALES - Port Hacking - Hacking River - Light beacon**

Transport for NSW

**Aus 198 [282/2025]**Amend light beacon to *Fl.G.5s* 34° 03'.78 S 151° 04'.92 E**389 AUSTRALIA - NEW SOUTH WALES - Port Jackson - Parramatta River - Wentworth Point - Light beacon**

Transport for NSW

**Aus 200 (Parramatta River) [201/2025]**Insert [accompanying block](#) 33° 49'.86 S 151° 05'.35 E**390 AUSTRALIA - QUEENSLAND - Gladstone to Port Alma - Depths**

Maritime Safety Queensland

**Aus 245 [471/2023]**Insert [accompanying block](#) 23° 49'.4 S 151° 13'.4 E**Aus 246 [8/2025]**Insert [accompanying block](#) 23° 52'.5 S 151° 27'.5 E**Aus 819 [124/2025]**Insert [accompanying block A](#) 23° 32'.5 S 150° 57'.0 E  
[accompanying block B](#) 23° 50'.5 S 151° 29'.0 E**391 AUSTRALIA - QUEENSLAND - Hinchinbrook Channel - Hecate Point - Navaids**

Maritime Safety Queensland

**Aus 828 [354/2025]**

Insert special conical light buoy, Q.Y, without topmark 18° 13'.57 S 146° 04'.96 E

Delete light beacon 18° 13'.9 S 146° 04'.7 E

**392 AUSTRALIA - QUEENSLAND - Port Clinton - South Arm - Beacons; obstruction**

Maritime Safety Queensland

**Aus 248 [NE 22/5/2015]**Replace beacon with danger circle with legend, *Obstrn* 22° 35'.39 S 150° 43'.88 E

Delete beacon 22° 38'.19 S 150° 42'.76 E

**393 PAPUA NEW GUINEA - Orokolo Bay - Scientific instrument**

National Maritime Safety Authority PNG

**PNG 502 [933/2021]**Insert special pillar light buoy, *Fl(5)20s*, without topmark 7° 53'.72 S 145° 19'.58 E**394 PAPUA NEW GUINEA - Saibai Island - Saibai - Light buoy**

Maritime Safety Queensland Notice 170/2025

**Aus 841 [81/2025]**Replace buoy with starboard lateral conical light buoy, *Fl.G.2.5s*, without topmark 9° 22'.5 S 142° 36'.6 E

**395 AUSTRALIA - TORRES STRAIT - Port Kennedy - Mooring buoy**

Australian Hydrographic Office

**Aus 299 [165/2025]**

Delete mooring buoy 10° 35'.01 S 142° 13'.71 E

**396 AUSTRALIA - NORTHERN TERRITORY - Buffalo Creek - Light beacons**

Northern Territory Government Notice 14/2025

**Aus 25 [287/2025]**Insert [accompanying block](#) 12° 20'.3 S 130° 55'.8 E**397 AUSTRALIA - NORTHERN TERRITORY - Shepparton Shoal to Charles Point Patches - Pipeline**

Santos

**Aus 25 [396/2025]**

Insert	pipeline, between	12° 17'.827 S	130° 36'.200 E
		12° 18'.534 S	130° 38'.240 E
		12° 18'.601 S	130° 38'.381 E
		12° 18'.665 S	130° 38'.494 E
		12° 18'.767 S	130° 38'.638 E
		12° 19'.920 S	130° 40'.094 E

**Aus 309 [NE 2/5/2025]**

Insert	pipeline, between	12° 06'.26 S	130° 02'.81 E
		12° 06'.43 S	130° 04'.05 E
		12° 06'.58 S	130° 05'.82 E
		12° 06'.81 S	130° 06'.72 E
		12° 08'.25 S	130° 08'.90 E
		12° 08'.61 S	130° 09'.61 E

**398 AUSTRALIA - WESTERN AUSTRALIA - Broome - Depths**

Former Notice - 913(P)/2024 is cancelled

Department of Transport WA

**Aus 50 [846/2024]**

Insert	<a href="#">accompanying ZOC diagram</a>	17° 54'.5 S	122° 19'.0 E
	<a href="#">accompanying block</a>	18° 00'.5 S	122° 14'.5 E

**399 AUSTRALIA - WESTERN AUSTRALIA - Dirk Hartog Island - Cape Ransonnet - Light beacons**

Department of Transport WA Notice WA661/8/2025

**Aus 74 [605/2023]**Insert isolated danger light beacon, *Fl(2)5s*, with topmark 26° 09'.76 S 113° 13'.02 E**Aus 331 [956/2024]**Insert isolated danger light beacon, *Fl(2)5s*, with topmark 26° 09'.76 S 113° 13'.02 E

Delete light beacon 26° 09'.8 S 113° 13'.4 E

**400 AUSTRALIA - WESTERN AUSTRALIA - Esperance Bay - Depths**

Australian Hydrographic Office , Southern Ports Authority - Port of Esperance

**Aus 119 [359/2025]**

Insert	depth, 22 <sub>m</sub>	33° 52'.76 S	121° 55'.58 E
	depth, 28 <sub>m</sub> , enclosed by contour	33° 59'.91 S	122° 00'.11 E
Replace	depth, 10 <sub>m</sub> , with depth, 9 <sub>m</sub> , and extend contour E to enclose	33° 51'.6 S	121° 54'.6 E
	depth, 19 <sub>m</sub> , with depth, 19 <sub>m</sub>	33° 52'.1 S	121° 56'.6 E
	depth, 22 <sub>m</sub> , with depth, 24 <sub>m</sub>	33° 52'.5 S	121° 56'.2 E
Delete	depth, 21m	33° 52'.7 S	121° 55'.7 E

**Aus 119 (Esperance) [359/2025]**

Replace	depth, 10 <sub>m</sub> , with depth, 9 <sub>m</sub> , enclosed by contour	33° 51'.62 S	121° 54'.63 E
---------	---	--------------	---------------

**Aus 762 [359/2025]**

Insert	depth, 9 <sub>m</sub> , and extend contour E to enclose	33° 51'.63 S	121° 54'.63 E
	depth, 22 <sub>m</sub>	33° 52'.76 S	121° 55'.58 E
	depth, 28 <sub>m</sub> , enclosed by contour	33° 59'.91 S	122° 00'.11 E
Replace	depth, 19 <sub>m</sub> , with depth, 19 <sub>m</sub>	33° 52'.1 S	121° 56'.6 E
	depth, 13 <sub>m</sub> , with depth, 12 <sub>m</sub>	33° 58'.0 S	122° 05'.2 E
Delete	depth, 25 <sub>m</sub>	33° 52'.2 S	121° 55'.4 E
	depth, 22 <sub>m</sub>	33° 52'.5 S	121° 56'.0 E

**Aus 763 [323/2025]**

Replace	depth, 12 <sub>m</sub> , with depth, 12 <sub>m</sub>	33° 58'.0 S	122° 05'.3 E
---------	--	-------------	--------------

**401 AUSTRALIA - WESTERN AUSTRALIA - Mary Ann Haven - Light**

Department of Transport WA

**Aus 116 (Mary Ann Haven) [207/2025]**

Amend	light to <i>Dir F.WRG.56m 6M &amp; Fl.2s 8M</i>	33° 56'.11 S	120° 08'.18 E
-------	---	--------------	---------------

**Aus 337 [291/2025]**

Amend	light to <i>Dir F.WRG.56m 6M &amp; Fl.2s 8M</i>	33° 56'.1 S	120° 08'.2 E
-------	---	-------------	--------------

**402 AUSTRALIA - VICTORIA - Port Phillip - Corio Bay - Light beacons**

Ports Victoria Notice 241/2025

**Aus 157 [20/2025]**

Insert	starboard lateral light beacon, <i>F.Iso.G.3s</i> , without topmark	38° 06'.009 S	144° 22'.919 E
	starboard lateral light beacon, <i>F.Iso.G.3s</i> , without topmark	38° 06'.647 S	144° 22'.335 E

**403 AUSTRALIA - VICTORIA - Western Port - Gentle Annie Channel - Buoy***Former Notice - 273(T)/2025 is cancelled*

Ports Victoria Notice 234(T)/2025

**Aus 151 (Continuation of Western Port) [209/2025]**

Replace	beacon with starboard lateral conical buoy without topmark	38° 15'.31 S	145° 19'.21 E
---------	--	--------------	---------------

**404 AUSTRALIA - VICTORIA - Western Port - Flinders - Light buoy eastwards**

Ports Victoria Notice 244(T)/2025

**Aus 151 [403/2025]**

Delete	light buoy	38° 28'.29 S	145° 04'.27 E
--------	------------	--------------	---------------

**Aus 801 [267/2023]**

Delete	light buoy	38° 28'.3 S	145° 04'.3 E
--------	------------	-------------	--------------

**405 AUSTRALIA - TASMANIA - River Derwent - Blackmans Bay to Halfmoon Bay - Pipeline**

Former Notice - 687(T)/2024 is cancelled

Marine and Safety Tasmania Notice M196/2025

**Aus 171 [961/2024]**

Insert [accompanying block](#)

43° 00'.5 S

147° 22'.5 E

**Aus 173 [216/2024]**

Insert [accompanying block](#)

43° 01'.1 S

147° 22'.5 E

**Aus 796 [858/2024]**

Insert [accompanying block](#)

43° 02'.0 S

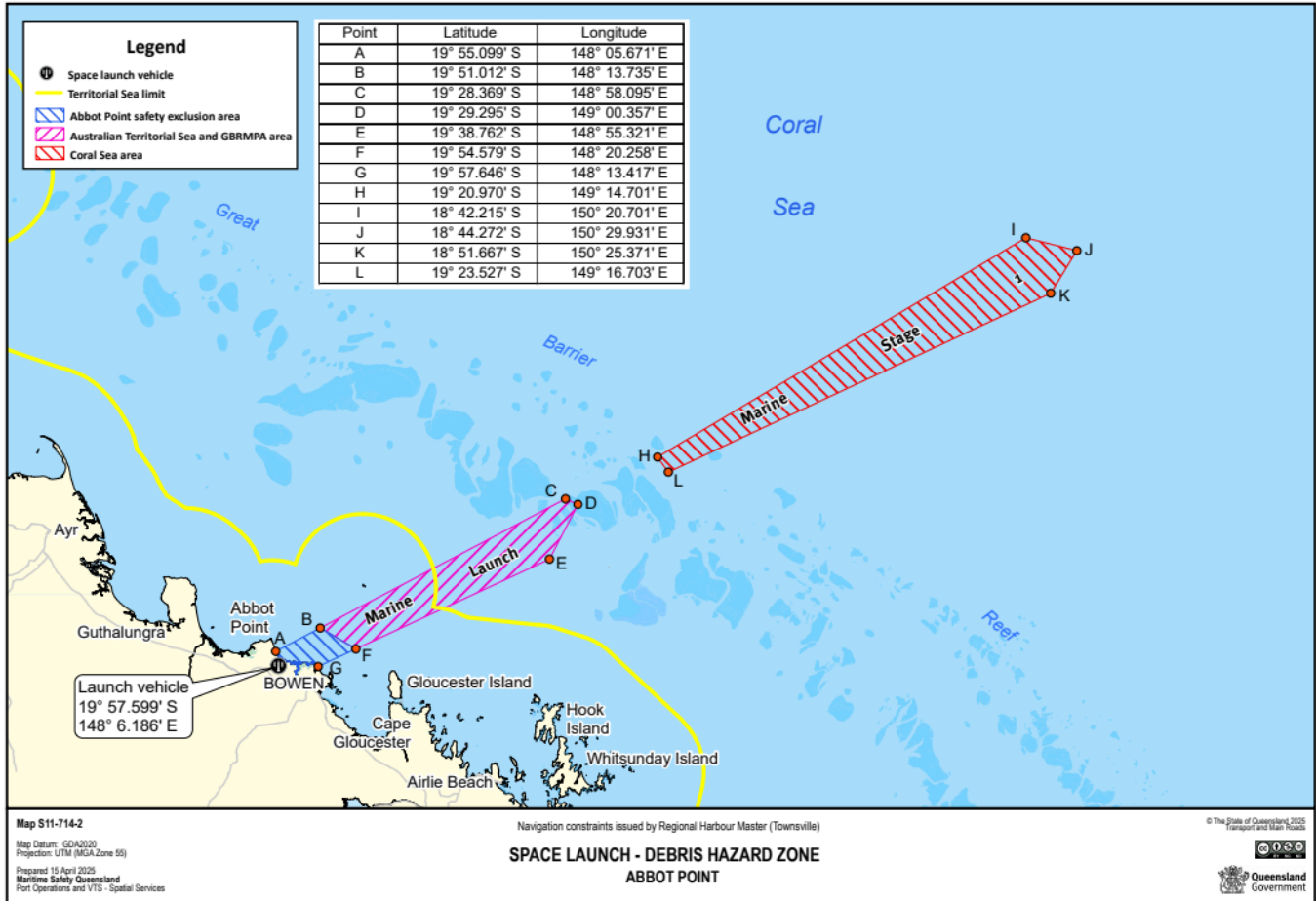
147° 22'.5 E

**406(T)/2025 AUSTRALIA - QUEENSLAND - Abbot Point - Space launch northeastwards**

Former Notice - 211(T)/2025 is cancelled  
 Maritime Safety Queensland Notice 173/2025

Bowen Orbital Spaceport is expected to commence space vehicle launch operations from 14 May 2025. Prior to launch, a safety exclusion area will be activated. Abbot Point VTS will broadcast when the safety exclusion area is activated and again to cancel the safety exclusion area via VHF Ch 12 and Ch 16.

Mariners are advised that a person must not anchor, berth, moor or operate a ship (other than a ship owned and/or operated by Queensland Police Service, Maritime Safety Queensland or a ship authorised to assist with the monitoring and management of the safety exclusion area) within the safety exclusion area.



**Chart temporarily affected - Aus 255 - Aus 268 - Aus 825 - Aus 826 - Aus 4602 (INT 602) - Aus 4603 (INT 603) - Aus 4604 (INT 604)**

**407(T)/2025 AUSTRALIA - QUEENSLAND - Hay Point - Obstruction**

Maritime Safety Queensland Notice 182(T)/2025

Anchorage N28 (21° 10'.00 S 149° 28'.00 E) is unavailable for anchoring due to a lost anchor and cable.

Mariners are advised to navigate with caution in the area.

**Chart temporarily affected - Aus 249 - Aus 823**

**408(T)/2025 AUSTRALIA - QUEENSLAND - Karumba - Scientific instrument**

Maritime Safety Queensland Notice 176(T)/2025

A special light buoy, *Fl.Y.2.5s*, exists in position 17° 21'.29 S 140° 43'.69 E.

**Chart temporarily affected - Aus 303**

**409(T)/2025 AUSTRALIA - QUEENSLAND - Magpie Reef - Light altered**

Australian Maritime Safety Authority Temporary ATH 2/2025

The light beacon, *Fl.WR.7.5s 8m 10/8M* (13° 48'.37 S 143° 44'.89 E), has been temporarily altered to *Fl.7.5s 8M*.

**Chart temporarily affected - Aus 833 - Aus 834**

**410(T)/2025 AUSTRALIA - QUEENSLAND - North Stradbroke Island - Light buoy off station eastwards**

Former Notice - 258(T)/2025 is cancelled

Department of Primary Industries

The special light buoy, *Fl.Y.3s FAD* (27° 41'.28 S 153° 36'.83 E), is off station and in position 27° 40'.55 S 153° 36'.17 E.

**Chart temporarily affected - Aus 814**

**411(T)/2025 PAPUA NEW GUINEA - New Ireland - Cape Sueusat - Light unlit**

National Maritime Safety Authority PNG Coastal Navigation Warning 2/2025

The light, *Fl.5s 9m 10M* (2° 37'.02 S 150° 46'.60 E), is unlit.

**Chart temporarily affected - PNG 392 - PNG 393 - PNG 543 - PNG 666**

**412(T)/2025 AUSTRALIA - NORTHERN TERRITORY - Darwin to Shepparton Shoal - Pipe laying operations completed**

Former Notice - 870(T)/2024 is cancelled

Santos

Cancel this notice on receipt.

**Chart formerly affected - Aus 25 - Aus 26 - Aus 309 - Aus 316**

**413(T)/2025 AUSTRALIA - TIMOR SEA - Sahul Banks - FPSO decommissioning**

Former Notice - 369(T)/2024 is cancelled

Petrofac Australia

Works associated with the decommissioning of the FPSO *Northern Endeavour* (10° 36'.89 S 125° 59'.13 E) are in progress and lighting may not be as charted.

Note: Charted name of FPSO, *Laminaria*, is incorrect.

Mariners should navigate with caution in the area.

**Chart temporarily affected - Aus 312**

**414(T)/2025 AUSTRALIA - WESTERN AUSTRALIA - Broome - Roebuck Bay - Exclusion zones; mooring buoy**

Kimberley Ports Authority Notice 4/2025

To facilitate the mooring of Kimberley Marine Supply Base pontoon, exclusion zones have been established in areas bounded by the following positions:

18° 01'.49 S 122° 13'.52 E

18° 01'.49 S 122° 13'.90 E

18° 01'.12 S 122° 13'.90 E

18° 01'.12 S 122° 13'.52 E;

and

18° 01'.52 S 122° 15'.67 E

18° 01'.52 S 122° 16'.60 E

18° 00'.65 S 122° 16'.60 E

18° 00'.65 S 122° 15'.67 E.

A lit yellow mooring buoy, *Fl.Y.3s*, exists in position 18° 00'.90 S 122° 16'.35 E.

Mariners are advised to navigate with caution in the area.

**Chart temporarily affected - Aus 50**

**415(T)/2025 AUSTRALIA - WESTERN AUSTRALIA - Cape Range - Tantabiddi - Light**

Department of Transport WA Notice 6420/2025

The front lead (21° 53'.99 S 113° 59'.19 E) has collapsed and should not be relied upon to indicate recommended track.

**Chart temporarily affected - Aus 328 - Aus 329 - Aus 745**

**416(T)/2025 AUSTRALIA - WESTERN AUSTRALIA - Carnarvon - Light beacon relit**

Former Notice - 1062(T)/2023 is cancelled

Department of Transport WA

Cancel this notice on receipt.

**Chart formerly affected - Aus 73**

**417(T)/2025 AUSTRALIA - WESTERN AUSTRALIA - Dampier - Tidepole Island - Wreck salvaged**

Former Notice - 372(T)/2025 is cancelled

Pilbara Ports Authority

Cancel this notice on receipt.

**Chart formerly affected - Aus 57 - Aus 60**

**418(T)/2025 AUSTRALIA - WESTERN AUSTRALIA - Dampier Archipelago - Mooring buoy removed northwestwards**

Former Notice - 305(T)/2025 is cancelled

Bhagwan Marine

Cancel this notice on receipt.

**Chart formerly affected - Aus 327 - Aus 742**

**419(T)/2025 AUSTRALIA - WESTERN AUSTRALIA - Onslow - Beadon Creek - Pipe laying operations**

Department of Transport WA Notice 6454/2025

Jack up barge and support vessel *Quokka* are conducting works associated with the installation of desalination pipelines between positions 21° 38'.12 S 115° 07'.61 E and 21° 38'.56 S 115° 07'.46 E .

Vessels will display appropriate lights and shapes and will monitor VHF Ch 16.

Mariners are advised to navigate with caution in the area.

**Chart temporarily affected - Aus 64**

**420(T)/2025 AUSTRALIA - VICTORIA - Ninety Mile Beach - Platform unlit eastwards**

Australian Maritime Safety Authority Auscoast Warning 142/2025

The *Dolphin* platform, *Mo(U)15s* (38° 29'.24 S 147° 22'.65 E), is unlit.

**Chart temporarily affected - Aus 357 - Aus 487 - Aus 4601 (INT 601)**

**421(T)/2025 AUSTRALIA - VICTORIA - Ninety Mile Beach - Drill rig**

Former Notices - 1003(T)/2024, 344(T)/2025 are cancelled

MODU *Valaris 107*

Drill rig *Valaris 107* is conducting drilling operations in position 38° 19'.41 S 147° 31'.25 E.

**Chart temporarily affected - Aus 357 - Aus 487**

**422(T)/2025 AUSTRALIA - VICTORIA - Port Campbell - Well plug and abandonment works southwards**  
Woodside Energy Ltd

Drill rig *Transocean Equinox* and support vessels are conducting well plug and abandonment works of the Minerva wells in the vicinity of position 38° 42'.58 S 142° 57'.61 E.

Mariners are advised to navigate with caution in the area.

**Chart temporarily affected - Aus 349**

**423(T)/2025 AUSTRALIA - VICTORIA - Port Phillip - Corio Bay - Light buoys; AIS removed**  
*Former Notice* - 413(T)/2021 is cancelled  
Ports Victoria Notice 241/2025

Cancel this notice on receipt.

**Chart formerly affected - Aus 157**

**424(T)/2025 AUSTRALIA - TASMANIA - Burnie - Aquaculture trial and research area northwards**  
*Former Notice* - 384(T)/2024 is cancelled  
Marine and Safety Tasmania Notice M208(T)/2025, M209(T)/2025

An aquaculture trial and research area marked by special light buoy, *Fl. Y.3s*, exists in an area bounded by the following positions:

40° 56'.68 S 145° 56'.03 E  
40° 56'.39 S 145° 56'.59 E  
40° 55'.90 S 145° 56'.15 E  
40° 56'.18 S 145° 55'.59 E.

All vessels not directly involved in activities with the research project are prohibited from entering the area.

**Chart temporarily affected - Aus 163**

**425(T)/2025 SOLOMON ISLANDS - Russell Islands - Live firing southwards**  
Solomon Islands Maritime Authority Notice 10/2025

During the period 27 to 29 May 2025, live firing will be conducted in an area bounded by the following positions:

9° 29'.00 S 159° 11'.00 E  
9° 29'.00 S 159° 26'.00 E  
9° 15'.00 S 159° 26'.00 E  
9° 15'.00 S 159° 11'.00 E.

Mariners are prohibited from entering the designated area during the specified period and are advised to maintain a minimum clearance of 5M around the area.

**Chart temporarily affected - SLB 303 - SLB 304**

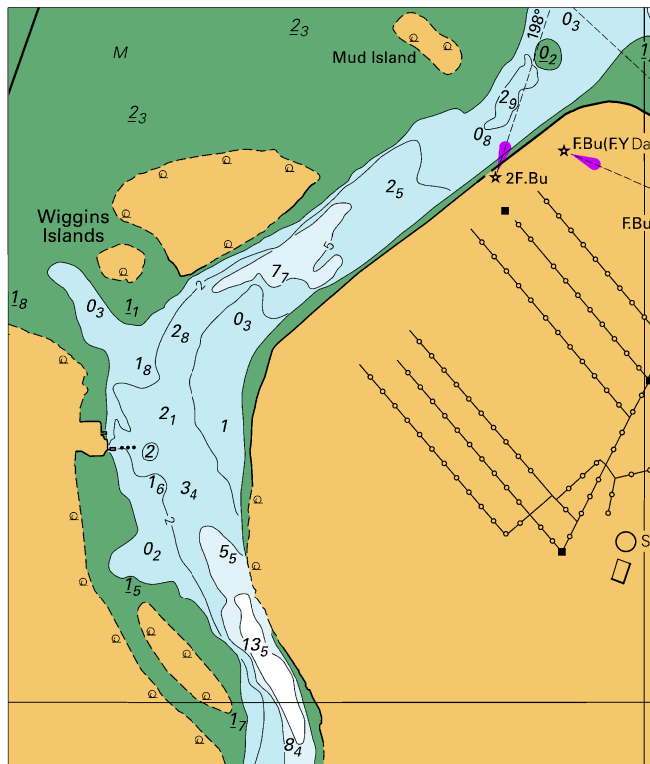
II

**HYDROGRAPHIC REPORTS**

NIL



To accompany Australian Notice to Mariners 390/2025

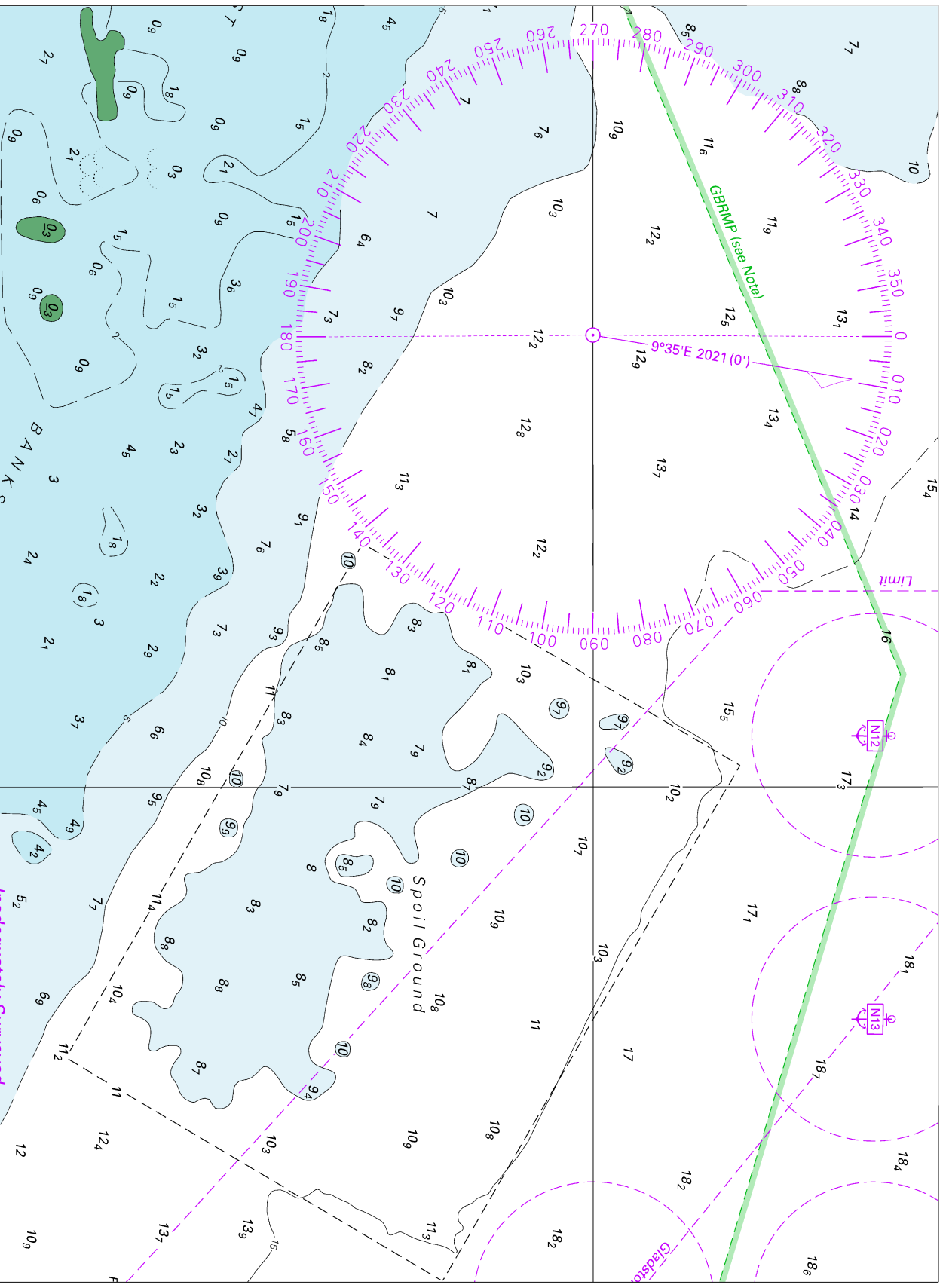


Block for chart Aus 245

(85.9 x 100.3mm)

© Commonwealth of Australia 2025

To accompany Australian Notice to Mariners 390/2025

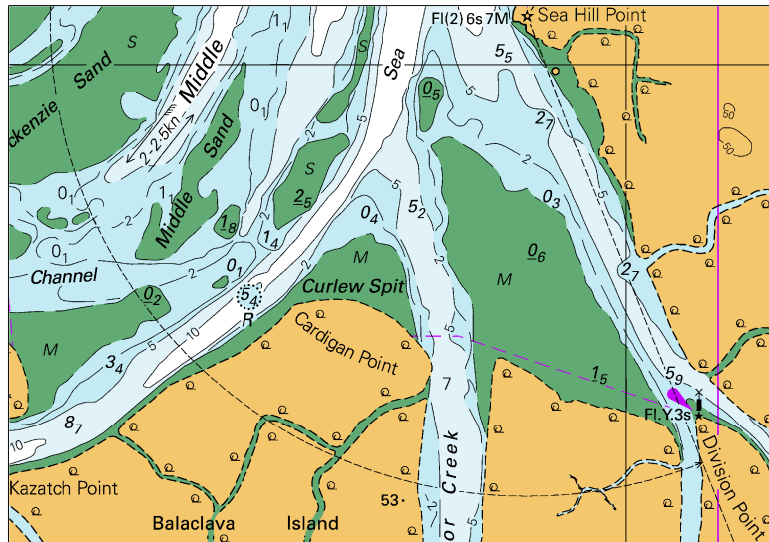


Block for chart Aus 246

© Commonwealth of Australia 2025

(224.2 x 164.7mm)

To accompany Australian Notice to Mariners 390/2025



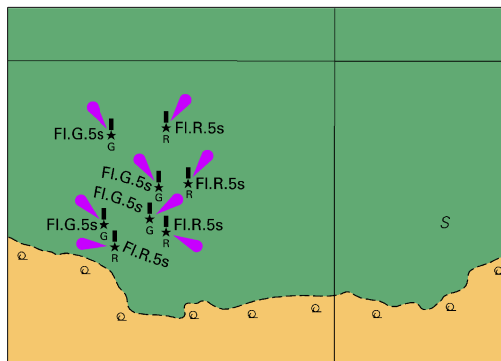
Block A for chart Aus 819

(101.7 x 71.0mm)

© Commonwealth of Australia 2025



To accompany Australian Notice to Mariners 396/2025

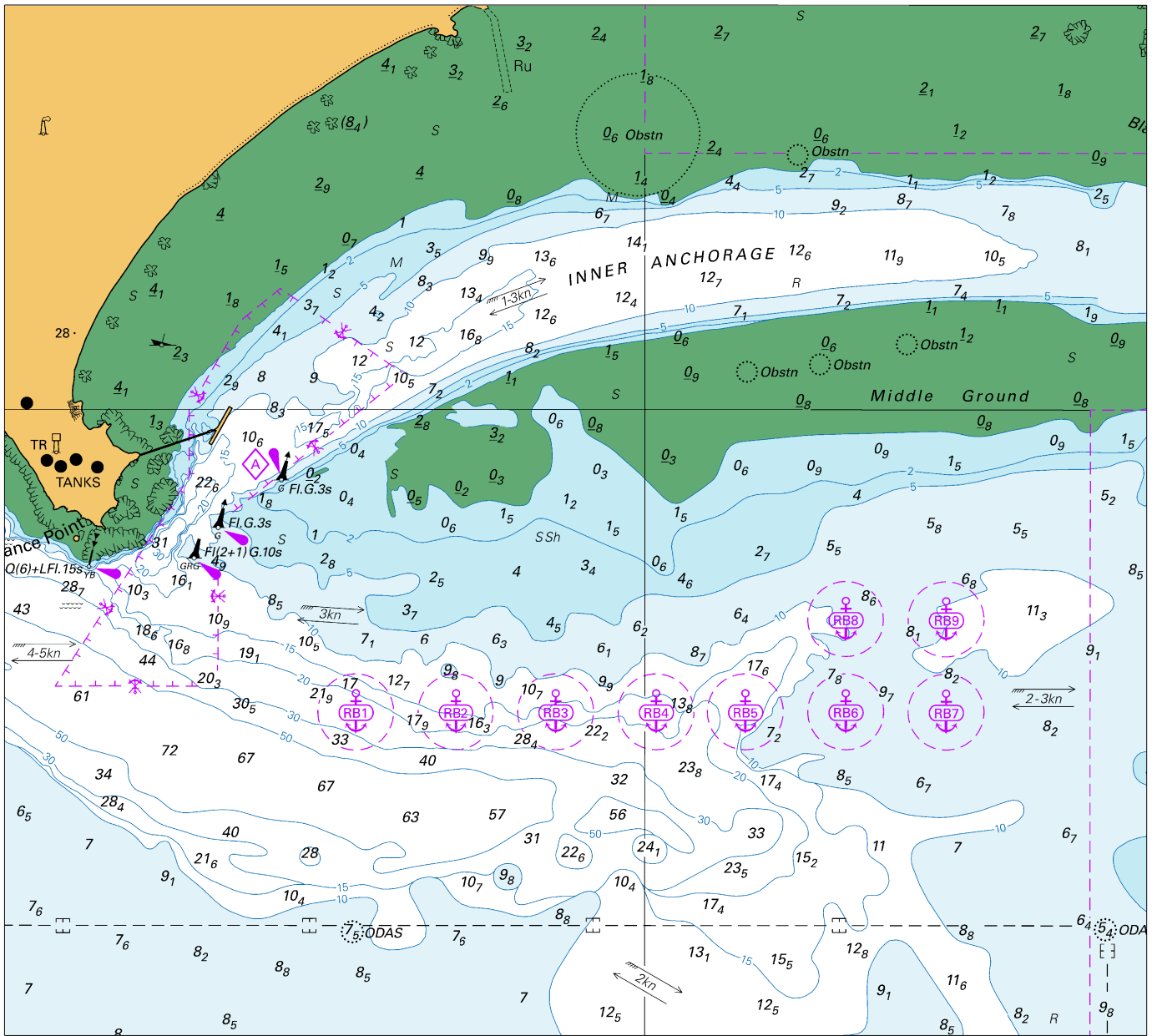


Block for chart Aus 25

(66.2 x 47.0mm)

© Commonwealth of Australia 2025

To accompany Australian Notice to Mariners 398/2025

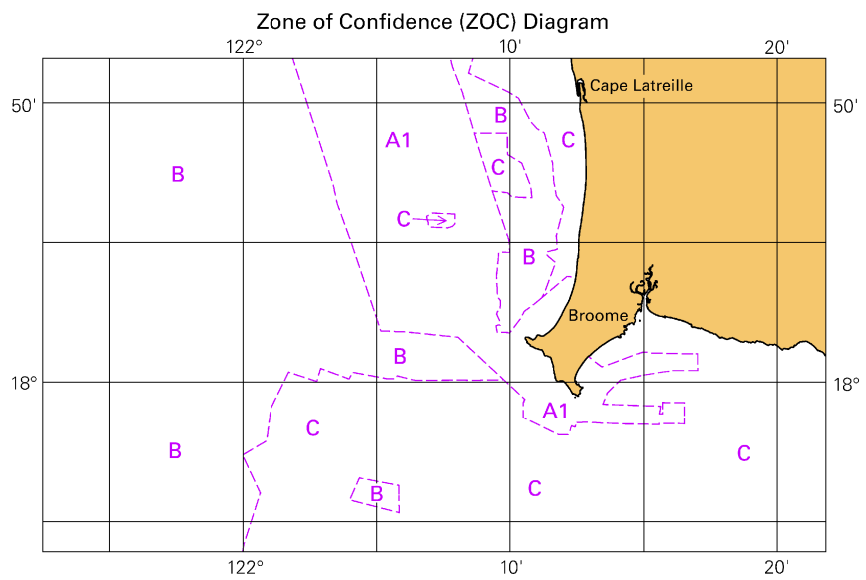


Block for chart Aus 50

© Commonwealth of Australia 2025

(180.9 x 163.4mm)

To accompany Australian Notice to Mariners 398/2025



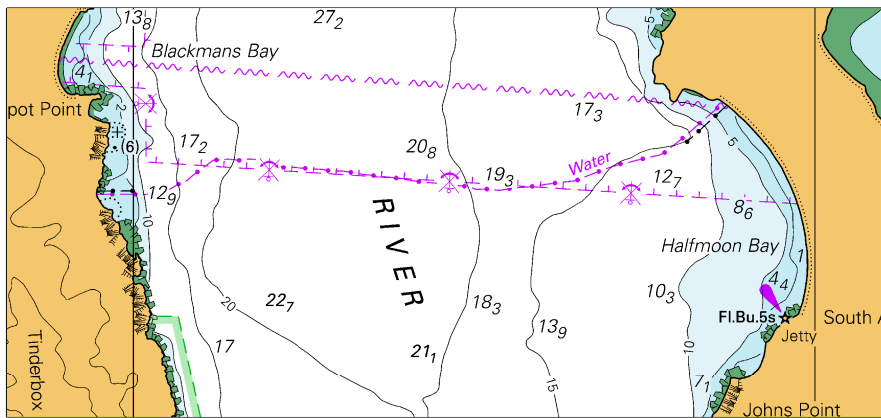
Block for chart Aus 50

© Commonwealth of Australia 2025

(103.4 x 65.4mm)



To accompany Australian Notice to Mariners 405/2025



Block for chart Aus 173

© Commonwealth of Australia 2025

(116.2 x 54.1mm)

