



Australian Government  
Department of Defence



AUSTRALIAN  
HYDROGRAPHIC  
OFFICE



# CHART & PUBLICATION MAINTENANCE HANDBOOK

© Commonwealth of Australia

OFFICIAL NAUTICAL CHARTS AND PUBLICATIONS  
[hydro.gov.au](http://hydro.gov.au)

AHP24



# **AHP24**

## **Chart and Publication Maintenance Handbook**

**(Australia, Papua New Guinea, Solomon Islands, and Timor Leste)**

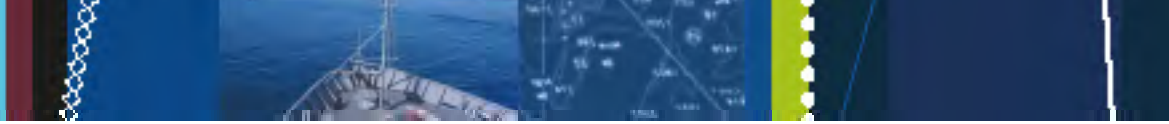


Chart & Publication Maintenance Handbook Edition 5.00

Compiled by the Australian Hydrographic Office

Fifth edition published by the Australian Hydrographic Office, Aug 2025

© Commonwealth of Australia 2025

This work is copyright. Apart from any use permitted under the Copyright Act 1968, no part may be reproduced by any process, adapted, communicated or commercially exploited without prior written permission from the Commonwealth represented by the Australian Hydrographic Office. Copyright in some of the material in this publication may be owned by another party and permission for the reproduction of that material must be obtained from the owner.

**Important Notice:**

This publication includes all significant nautical information obtained by the AHO at date of production. Significant information is updated by Australian Notices to Mariners and electronic update. All reasonable efforts have been made to ensure the accuracy and completeness of the information, including third party information, incorporated in this publication. The AHO regards third parties from which it receives information as reliable, however the AHO cannot verify all such information and errors may therefore exist. The AHO does not accept liability for errors in third party information or the inappropriate use of this publication. Information on current legislation can be found on the Commonwealth of Australia Law website: [www.comlaw.gov.au](http://www.comlaw.gov.au).

## Preface

The Chart and Publication Maintenance Handbook provides information to assist mariners to maintain nautical charts and publications. This book will also assist the mariner to maintain appropriate records suitable for an external inspection.

National and international regulations governing Safety Of Life At Sea (SOLAS) and other commercial vessels, all require up to date nautical charts and publications. These regulations all recognise that, unlike a topographic map, a mariner can only see a small fraction of the features and dangers that lie ahead, as the remainder are submerged.

Enquiries or suggestions regarding this publication should be directed to [strategy@hydro.gov.au](mailto:strategy@hydro.gov.au).



Robyn Phillips  
Commodore  
Royal Australian Navy  
Hydrographer of Australia

Australian Hydrographic Office  
8 Station Street  
Wollongong NSW 2500  
[www.hydro.gov.au](http://www.hydro.gov.au)

## Updates for Edition 5:

As part of the update of AHP24 information duplicated in other publications has been removed. The changes are outlined below as well as where to find the information that was removed from this publication.

GENERAL INFORMATION		
1.1	Why do Nautical Charts and Publications Need to be Updated?	On <a href="#">factsheets</a>
1.2	Australian Hydrographic Service	In <a href="#">AHP20</a> chapter 12
1.3	Official Nautical Charts and Publications	In <a href="#">AHP20</a> chapter 12
1.4	What Charts and Publications Need to be Carried	In <a href="#">AHP20</a> chapter 12
1.5	Australian Charting Area and Chart Series	In <a href="#">AHP20</a> chapter 12
1.6	Reporting Discrepancies on Nautical Charts and Publications	In <a href="#">AHP20</a> chapter 12
ELECTRONIC CHARTS		
2.1	Introduction	On <a href="#">factsheets</a>
2.2	Chart Display and Information Systems	On <a href="#">factsheets</a> and AHP20
2.3	Electronic Navigational Charts (ENC)	On <a href="#">factsheets</a> and AHP20
2.4	The AusENC Service	On <a href="#">factsheets</a> and AHP20
2.5	Training	No longer produced
2.6	Temporary and Preliminary Notices in ENC	Now in Chapter 3
NOTICES TO MARINERS		
3.1	Introduction	Now in Chapter 1
3.2	Annual Notices to Mariners	No longer produced
3.3	Fortnightly Notices to Mariners	Now in Chapter 2
3.4	Accessing Notices via the Australian Chart Index (online)	Now in Chapter 1
3.5	eNotices	Now in Chapter 1
3.6	Admiralty Notices to Mariners	Available from <a href="#">UKHO</a>
PAPER NAUTICAL CHARTS		
4.1	Introduction	On <a href="#">factsheets</a>
4.2	Updating Paper Nautical Charts	On <a href="#">factsheets</a>
4.3	Measurement Conversion Table	No longer produced
4.4	Applying Corrections to Paper Nautical Charts	Now in Chapter 3
4.5	Chart Correction Examples	In <a href="#">AHP20</a> chapter 12
4.6	Symbols Used on Paper Charts	In <a href="#">AHP20</a> chapter 12
NAUTICAL PUBLICATIONS		
5.1	Introduction	In <a href="#">AHP20</a> chapter 12
5.2	Carriage Requirements	In <a href="#">AHP20</a> chapter 12
5.3	Australian Nautical Publications	Now in Chapter 4
5.4	Updating Australian Nautical Publications	Now in Chapter 4
5.5	Admiralty Nautical Paper Publications	Available from <a href="#">UKHO</a>
5.6	Admiralty Digital Publications	Available from <a href="#">UKHO</a>
LOG SHEETS		
6.1	Introduction	Now in Chapter 6
6.2	Downloading Log Sheets	Available on the <a href="#">website</a>

# Contents

## Chapter 1 Notices to Mariners

1.1	What are Notices to Mariners.....	1
1.2	eNotices .....	1
1.3	Accessing Notices via the Australian Chart Index (Online) .....	1

## Chapter 2 NtM Sections

2.1	Section I - Australian Notices to Mariners, including Blocks and Notes .	3
2.2	Section II - Hydrographic Reports .....	7
2.3	Section III - Supplements .....	7

## Chapter 3 Applying Corrections to Paper Nautical Charts

3.1	Tracings .....	10
3.2	Temporary and Preliminary Notices .....	12
3.3	Important points to remember when applying a correction to a paper chart .....	12
3.4	Chart correction examples.....	13

## Chapter 4 Updating Australian Nautical Publications

4.1	Is your Australian nautical publication up to date? .....	17
4.2	How to apply Notices to Mariners to a Printed publication .....	18
4.3	Important points to remember .....	21

## Chapter 5 Reporting Discrepancies on Nautical Charts and Publications

5.1	Reporting discrepancies .....	22
-----	-------------------------------	----

## Chapter 6 Chart Correction Log

6.1	Chart correction log.....	23
-----	---------------------------	----



## CHAPTER 1 NOTICES TO MARINERS

### 1.1 WHAT ARE NOTICES TO MARINERS

Australian Notices to Mariners (NtM) are the authority for correcting paper nautical charts and publications published by the Australian Hydrographic Office (AHO).

NtM are published by the AHO in 25 fortnightly editions each calendar year. They are issued to correct and maintain the following AHO published products:

- AUS paper charts (coverage includes Australian, Timor Leste and Antarctic waters)
- PNG paper charts (coverage includes Papua New Guinea waters)
- SLB paper charts (coverage includes Solomon Islands waters)
- Australian National Tide Tables (AHP11)
- Tide Tables for Papua New Guinea, Solomon Islands, and Timor Leste
- Mariner's Handbook for Australian Waters (AHP20)

NtM also notify mariners of the release and withdrawal of AHO published navigational products.

### 1.2 ENOTICES

eNotices is a free subscription service from the AHO which enables mariners to receive NtM for nautical charts and publications by email. Users create their portfolio of nautical charts and publications by selecting from a list. Then as Australian NtM are published, subscribed users are automatically emailed only the NtM that affect their portfolio of charts. eNotices include general NtM for all publications.

Electronic Nautical Charts (ENC) users should strongly consider using eNotices as a means of receiving update notifications for Australian Hydrographic Publications (AHP) to prompt downloading the latest version.

eNotices includes all Permanent, Temporary and Preliminary NtM for your nominated Australian, Antarctic waters, Papua New Guinea, Solomon Islands and Timor Leste charts, as well as Australian Hydrographic Publications, supplied by email.

Block updates, tracings and cumulative lists are not included in eNotices, however, links are included in the emails. This allows eNotices file sizes to remain small compared to the full fortnightly Australian NtM, and therefore is more easily downloaded at sea.

To subscribe to this service go to the eNotices section of the web site.

[www.hydro.gov.au/enotices/enotices.htm](http://www.hydro.gov.au/enotices/enotices.htm)

### 1.3 ACCESSING NOTICES VIA THE AUSTRALIAN CHART INDEX (ONLINE)

The content of Australian NtM is also available online via the Australian Chart Index (ACI). This directly links the current edition of each chart with a list of all notices affecting that chart. This avoids the need to search Cumulative Lists and NtM editions. It is particularly useful when a mariner's portfolio of charts is relatively small or only a few charts need updating ahead of a specific voyage.

For details, see AHO website.

[www.hydro.gov.au/prodserv/paper/standard-aci.htm](http://www.hydro.gov.au/prodserv/paper/standard-aci.htm)

## CHAPTER 2 NTM SECTIONS



21 February 2025

Edition 4

1

### AUSTRALIAN NOTICES TO MARINERS

Notices 162 - 198 2

Published fortnightly by the Australian Hydrographic Office

Australian Notices to Mariners are the authority for correcting charts and publications published by the Australian Hydrographic Office covering Australia, Papua New Guinea, Solomon Islands, Australian Antarctic Territory and Timor-Leste.

Commodore R.L. PHILLIPS RAN  
*Hydrographer of Australia*

#### SECTIONS.

- 3
- I. Australian Notices to Mariners, including blocks and notes.
  - II. Hydrographic Reports.

#### SUPPLEMENTS.

- 4
- I. Tracings
  - II. Cumulative List of Australian Notices to Mariners.
  - III. Cumulative List of Temporary and Preliminary Australian Notices to Mariners.
  - IV. Temporary and Preliminary Notices in force.

© Commonwealth of Australia 2025

This work is copyright. Apart from any use permitted under the Copyright Act 1968, no part may be reproduced by any process, adapted, communicated or commercially exploited without prior written permission from The Commonwealth represented by the Australian Hydrographic Office.

AHP 18

#### Notes:

1. Edition number - Australian Notices to Mariners (NtM) are numbered from 1 onwards and are published in 25 fortnightly editions each calendar year.

2. Notice numbers restart each calendar year. The first and last notice number contained in each edition is indicated on the front cover of the publication.

Once a quarter the list of temporary and preliminary notices in force are published.

3. Sections - See 2.1.

4. Supplements - See 2.3.



## 2.1 SECTION I - AUSTRALIAN NOTICES TO MARINERS, INCLUDING BLOCKS AND NOTES

The following information is published in Section I of NtM:

### 2.1.1 NOTIFICATION OF NEW CHARTS AND ENCS

New charts and new editions are promulgated by NtM as shown in the example below.

<b>676 AUSTRALIA - Products - New Charts, New Editions, Withdrawn Charts</b>				
Australian Hydrographic Office ,				
<b>New Charts</b>				
<i>Chart</i>	<i>Title and Geographical limits</i>	<i>Scale</i>	<i>Publication Date</i>	<i>Remarks</i>
Aus 907	Timor-Leste - North Coast - Approaches to Tibar	1:10 000	2 September 2022	New chart with latest bathymetric survey data.
Aus 908	Timor-Leste - North Coast - Porto Baia de Tibar	1:3 750	2 September 2022	New chart with latest bathymetric survey data.
<b>New Electronic Navigation Chart (Aus ENC)</b>				
<i>Cell Name</i>	<i>Title</i>		<i>Publication Date</i>	<i>Remarks</i>
AU5CA2HE	Timor Leste - North Coast - Caltehu to Hera		25 August 2022	

### 2.1.2 NEW EDITIONS AND CHARTS PERMANENTLY WITHDRAWN

New charts, and charts superseded by new editions and new charts, are promulgated by NtM as shown in the example below. Superseded charts are not maintained by NtM and should not be used for navigation.

Charts are 'permanently withdrawn charts without replacement', when a new chart of similar or improved coverage is released with a different number. Withdrawn charts are not to be used for navigation.

<b>New Editions and Withdrawn Charts</b>				
<i>Chart</i>	<i>Title</i>	<i>Scale</i>	<i>Publication Date</i>	<i>Remarks</i>
Aus 256 (Edition 4)	Australia - East Coast - Queensland - Cleveland Bay and Approaches	1:50 000	24/1/2025	New edition with general updating throughout; including nav aids, dredge channel and bathymetric data. <b>Chart Aus 256 Edition 3 dated 4 Jul 2014 is now superseded and must be withdrawn from use.</b>
Aus 727 (Edition 3)	Australia - North West Coast - Western Australia - Rocky Island to Eclipse Islands	1:150 000	24/1/2025	New edition with general updating throughout; including new bathymetric data. <b>Chart Aus 727 Edition 2 dated 7 Mar 2003 is now superseded and must be withdrawn from use.</b>
<b>Admiralty publication</b>				
<i>NP No</i>	<i>Title</i>		<i>Date</i>	<i>Remarks</i>
NIL				
<b>Chart permanently withdrawn</b>				
Charts listed above as withdrawn no longer meet chart carriage requirements and should be marked as "superseded" and replaced with the new chart/ new edition listed prior to passage through the area covered by the new chart.				
When placing orders with a chart agent between notice of forthcoming edition and its publication, mariners should advise whether their order pertains to the current edition or the new edition.				
For further details refer to the AHO website at <a href="http://www.hydro.gov.au">www.hydro.gov.au</a> for new edition and new chart stock arrival information.				

### 2.1.3 NOTIFICATION OF A NEW PUBLICATION OR NEW EDITION

This notification is for new versions of publications. Once the new edition is received, superseded publications should be archived or destroyed. Superseded editions should not be used for navigation.

Australian National Tide Tables 2024			
AHP No	Remarks		
AHP11	<p>The Australian National Tide Tables (ANTT) 2024 is now available.</p> <p>Users can now choose to download the ANTT (PDF book), or access the same information via an interactive digital platform, from the AHO website (<a href="http://www.hydro.gov.au/prodserv/publications/antt.htm">www.hydro.gov.au/prodserv/publications/antt.htm</a>).</p> <p>The new digital platform provides an enhanced user experience by giving access to the tide information in an intuitive and functional way.</p> <p>Users can now search on individual ports and download relevant information for use offline.</p> <p><i>The ANTT 2024 (PDF book) is an official nautical publication and complies with Australian carriage requirements.</i></p>		
<b>Admiralty publication</b>			
NP No	Title	Date	Remarks
NP100 & e-NP100	ADMIRALTY The Mariner's Handbook Thirteenth Edition 2023	7/12/2023	The Twelfth Edition 2020 is cancelled.
NP283(2)	ADMIRALTY List of Radio Signals Maritime Safety Information Services The Americas, Far East and Oceania Volume 3(2) 4th Edition (2023)	7/12/2023	The 3rd Edition (2022) is cancelled.

### 2.1.4 AMENDMENTS TO AUSTRALIAN NAUTICAL PUBLICATIONS

Corrections to the Mariners Handbook for Australian Waters, Australian National Tide Tables and advice of downloads for Austides are listed in Section I. Corrections are promulgated for current editions only.

9	<b>AUSTRALIA - Product - Amendment to Mariner's Handbook for Australian Waters AHP20</b>
ports Victoria	
Chapter 11.8.5 - Victoria Ports - Page 230	
replace table with accompanying block	

### 2.1.5 PERMANENT NOTICES

This notice is issued for the prompt dissemination of permanent navigational information considered important to safe navigation.

5	AUSTRALIA - QUEENSLAND - Cape Bowling Green - Wreck southeastwards		
Former Notice - 457(1)/2020 is cancelled			
Maritime Safety Queensland			
Aus 826 [993/2023]			
Insert	safe clearance depth, 15m, enclosed by danger circle with legend, Wk	19° 20'.27 S	147° 35'.97 E
Aus 827 [997/2023]			
Insert	safe clearance depth, 15m, enclosed by danger circle with legend, Wk	19° 20'.27 S	147° 35'.97 E

Previous notice applied to the chart

Source of the information

## 2.1.6 TEMPORARY NOTICES

A Temporary notice is issued where the information will remain valid only for a limited period. A Temporary notice is indicated with a (T) adjacent to the notice number.

**13(T)/2024 AUSTRALIA - QUEENSLAND - Cairns - Trinity Inlet - Wreck**  
Maritime Safety Queensland Notice 608(T)/2023

A wreck marked by a special light buoy, *Fl. Y.2-5s*, exists in position 16° 56'.56 S 145° 47'.06 E.

Mariners are advised to navigate with caution in the area.

**Chart temporarily affected - Aus 262**

## 2.1.7 PRELIMINARY NOTICES

A Preliminary notice is indicated with a (P) adjacent to the notice number. They are issued where advance promulgation to mariners is needed e.g. planned alteration to a light. A Permanent notice will be promulgated when the work is completed.

**75(P)/2024 AUSTRALIA - WESTERN AUSTRALIA - Onslow - Shoaling**  
OSMB

Latest survey indicates shoaler depths than those charted may exist within the spoil ground in the vicinity of position 21° 36'.88 S 115° 06'.31E

Mariners are advised to navigate with caution in the area.

Charts will be updated in due course.

**Chart which will be affected - Aus 64**

## 2.1.8 BLOCKS AND CHART NOTES

Blocks and Chart Notes are a replacement portion of a chart or printed publication. They are produced where there is significant new information important to safe navigation in a relatively small area, or where the volume of changes would clutter the chart if amended by hand. Blocks and Notes are designed to be cut out and manually pasted onto the relevant chart. See examples below.

**57 AUSTRALIA - WESTERN AUSTRALIA - Varanus Island - Coastline, nav aids**  
Santos

**Aus 65 [1044/2023]**

Insert accompanying block

20° 39'.0 S

115° 37'.5 E

**Aus 742 [603/2023]**

Insert accompanying block

20° 35'.0 S

115° 39'.0 E



## 2.2 SECTION II - HYDROGRAPHIC REPORTS

Mariners are encouraged to report on any changes, discrepancies or omissions from charts and publications. Such information will be used to improve existing charts and other navigation products in both Australia's Charting Area and worldwide.

For information on how to make and submit a report see [section 5.1](#).

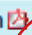

Section II acknowledges the receipt of Hydrographic Reports as shown in the following example:

II HYDROGRAPHIC REPORTS			
Locality	Report	Ship/Authority	Observer
SOUTHERN OCEAN- Macquarie Island	Anchor chains	RSV <i>Nuyina</i>	

## 2.3 SECTION III - SUPPLEMENTS

The following supplements linked to the NtM can be downloaded from the AHO website:

- Supplement (i) Tracings
- Supplement (ii) Cumulative List of Australian NtM
- Supplement (iii) Cumulative List of Australian Temporary and Preliminary Notices (list by chart)
- Supplement (iv) Temporary and Preliminary Notices (list by full notice)

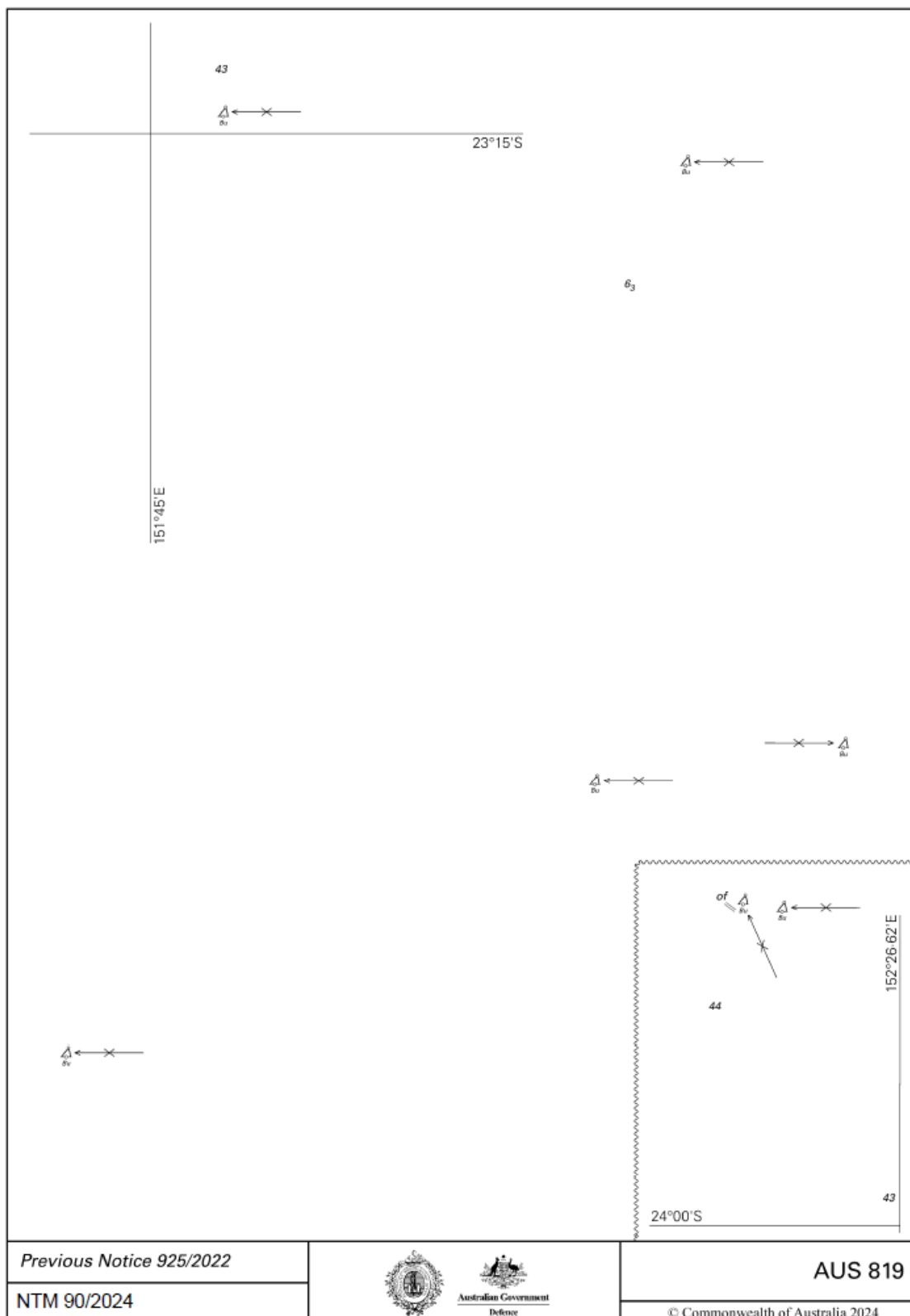
Notice Edition	Publication 	Supplements 	
		Tracings (I)	Others (II-IV)
Edition 4: NTMs 136 - 176	Full Edition Text Only Blocks Only	Tracings	(II) Cumulative List (III) Cumulative List (T&P) (IV) Temp & Prelim
Edition 3: NTMs 86 - 135	Full Edition Text Only Blocks Only	Tracings	(II) Cumulative List (III) Cumulative List (T&P) (IV) Temp & Prelim



## 2.3.1 TRACINGS

NtM tracings are produced to assist the mariner to update their charts. They are diagrams that provide guidance on how to apply NtM updates. They are overlaid on the chart and the position of each feature can be pierced through to the chart with a pin to enable the feature to be drawn in position. A set of tracings are available for each published Australian NtM edition.

See section 3.3 for instructions on printing at correct scale and applying corrections to the charts.





### 2.3.2 CUMULATIVE LISTS OF AUSTRALIAN NOTICES TO MARINERS

The most effective means of maintaining the currency of paper charts is via the Australian Chart Index (ACI). This provides a direct link to every notice affecting the current edition of each chart. See section 1.3.

For those mariners correcting their charts from individual NtM editions, a Cumulative List is produced to assist mariners to maintain chart currency. The list has the current edition date and all the NtM updates that have affected each Australian paper nautical chart in the last two years. The Cumulative List is published as a supplement to each fortnight NtM edition.

<i>Chart Number</i>	<i>Current Edition</i>	<i>Notices to Mariners affecting the chart from Edition 5 dated 03 Mar 2023</i>
Aus 4	Jun 2023	
Aus 6	May 2000	<b>2023-425-550-1042 2024-842</b>
Aus 14	Oct 1996	<b>2023-181-437-480-1002</b>
Aus 15	Aug 2018	<b>2023-225 2024-669 2025-129</b>
Aus 16	Aug 2001	<b>2018-1123</b>
Aus 17	Jul 2018	<b>2021-836</b>
Aus 18	Nov 2015	<b>2016-344</b>
Aus 20	Sep 2024	
Aus 21	Jan 1992	<b>2024-670</b>
Aus 22	Nov 2008	<b>2024-640</b>
Aus 23	May 2020	<b>2024-515-666</b>
Aus 25	Mar 2017	<b>2023-347-797-927 2024-514-668-772 2025-86-202</b>

### 2.3.3 TEMPORARY AND PRELIMINARY NOTICES IN FORCE

A summary of Temporary and Preliminary notices in force are available via fortnightly NtM - summary published every quarter in January, April, July and October.

<i>Notice</i>	<i>Charts affected</i>	<i>Locality and Subject</i>
<b>754/2022</b>	Aus357 487	<b>BASS STRAIT</b> Racon non operational
<b>788/2022</b>	Aus614	<b>CORAL SEA</b> Diamond Islets Shoaling
<b>494/2019</b>	Aus611 612	<b>Kenn Reefs and Frederick Reefs</b> Shoaling

## CHAPTER 3 APPLYING CORRECTIONS TO PAPER NAUTICAL CHARTS

### 3.1 TRACINGS


The tracing is a pictorial representation of the printed Notices to Mariners (NtM) (see below) and are designed to assist in the correction of charts. They are supplied with each edition of NtM.

For printing instructions see [section 3.3](#)

#### 3.1.1 TERMS AND SYMBOLS USED IN NOTICES TO MARINERS TRACINGS

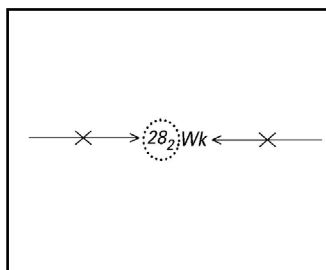
There are five main commands in Australian NtM. These are:

##### 3.1.1.1 INSERT

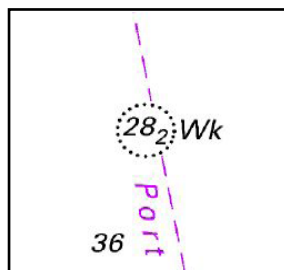
Insert is used when new data is added to a chart. Features are to be inserted on the position given but if this is not practicable, a  symbol (fixed point) is to be used and the original symbol can then be inserted elsewhere with an arrow indicating its true position. This procedure can also be used for minor movement of symbols but the arrow in both cases should not exceed a maximum length of 3 to 5cm.

Tracing Symbol: The Insert symbol on a tracing is an arrow with a cross. The arrow is pointing to the position of the feature. When correcting the chart, the arrow and cross are not transferred onto the chart.

Tracing example



Correction on a chart

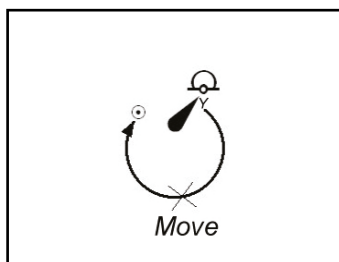


##### 3.1.1.2 MOVE

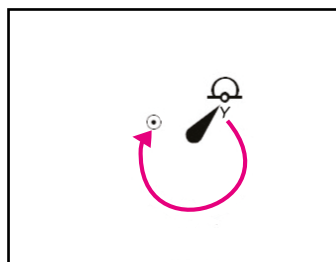
Move is used when a position has changed but not the feature's characteristic.

Tracing Symbol: The move symbol on a tracing is an insert arrow with the word 'move' around the outside. The cross on the arrow and the word 'move' is not placed on the chart. See example below.

Tracing example



Correction on a chart

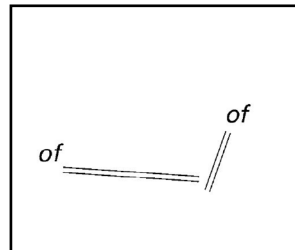


### 3.1.1.3 DELETE

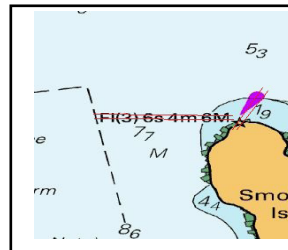
Delete is used when a feature is to be removed from the chart.

Tracing Symbol: The delete command is indicated by an 'Of' symbol. A deletion is also marked as a double strike through over the feature. The delete symbol is not transferred to the chart.

Tracing example



Correction on a chart



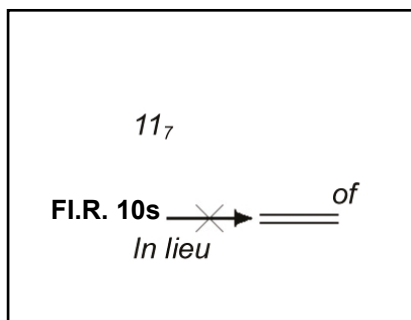
### 3.1.1.4 AMEND OR REPLACE

Amend is used when a feature needs to be amended e.g. a characteristic of a navigation light has changed, but the position of the light remains the same.

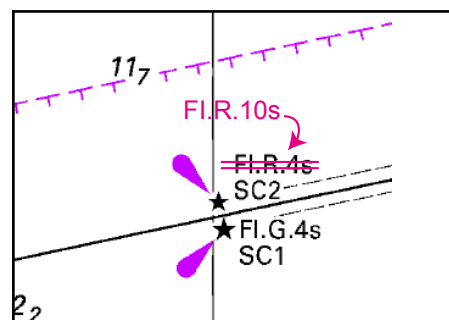
Replace is used to change features such as soundings where the depth has been altered.

Tracing Symbol: The word "in lieu" is used along with an insert arrow and in most cases a deletion will accompany the amend command. The cross on the arrow and the words 'in lieu' are not placed on the chart.

Tracing example



Correction on a chart

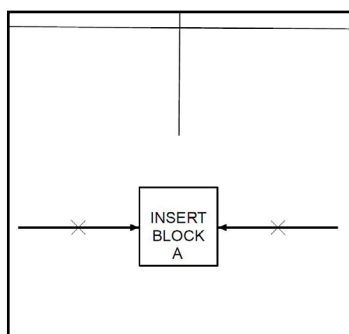


### 3.1.1.5 BLOCK UPDATE

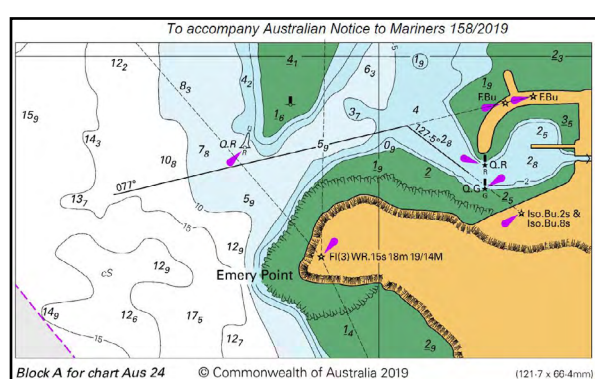
Block updates are used when a section of the chart requires significant updating.

Tracing Symbol: The words "insert block" are written in a box with insert arrows indicating the position on the chart. In the example below, simply align the position of the block on the chart and paste directly onto the chart.

Tracing example



Correction on a chart



## 3.2 TEMPORARY AND PRELIMINARY NOTICES

Temporary and Preliminary notices are plotted using a pencil in the general area affected with a cross to indicate the position of the object. If an area is given, the boundary may be plotted using a dashed line. A box containing the notice number and brief details of the notice is to be plotted in a convenient place clear of any other information and this is connected to the position or area by an arrow.

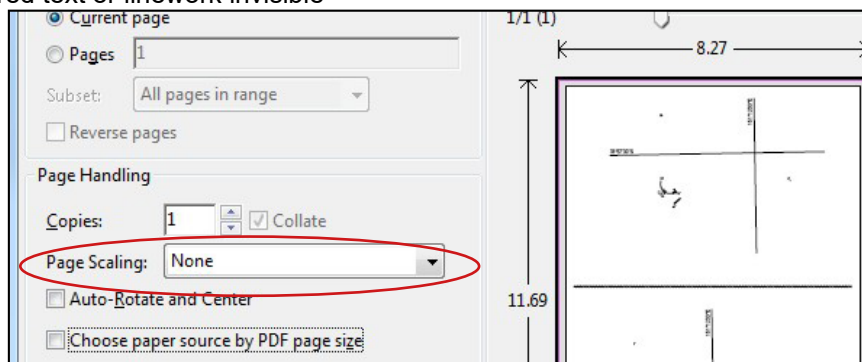
Details of Temporary and Preliminary notices applied to the current edition of each chart can be obtained via the Australian Chart Index (ACI) on the AHO website.

Download and print Section IV "Temporary and Preliminary Notices in Force". This should be accessible by navigation staff for those occasions when the brief details marked on the chart may not be sufficient. Replace this printed copy with the latest edition each fortnight.

Electronic Nautical Chart (ENC) from most nations, including Australia, include updates aligned to Temporary and Preliminary Notices to Mariners. These are applied to the ENC or removed again as part of the continually supplied updates.

## 3.3 IMPORTANT POINTS TO REMEMBER WHEN APPLYING A CORRECTION TO A PAPER CHART

- Corrections must be completed as soon as possible, if several charts are affected by a NtM, the largest scale charts should be corrected first. Positions must be plotted precisely and corrections must be written clearly and away from other features on a chart
- Do not use red pen to correct charts, red light could be used on the bridge of a ship at night, rendering any red text or linework invisible



- When printing NtM accompanying blocks, pages or tracings always select 'no page scaling', see diagram on page below
- It is recommended that tracings be printed on premium grade A4 tracing paper 110 - 115gsm. If tracing paper is unavailable, white paper less than or equal to 70gsm is sufficient
- Do not solely rely on tracings to update charts; tracings should be used in conjunction with NtM
- Always remove the black border from the block before pasting it onto the chart
- If glue is used it should be applied to the chart not to the block; this reduces the possibility of distortion on the block
- Charts that are not maintained are to be clearly marked "NOT TO BE USED FOR NAVIGATION"
- Always hold the current edition - archive or destroy old editions to avoid confusion
- The NtM number is to be inserted at the bottom left hand corner on completion of correction - first correction for the year, the year is to be recorded before the number
- It is recommended that a chart correction log is maintained to record the corrections applied to charts. ([see section 6](#))
- Always check your corrections
- Check Temporary and Preliminary Notices in Force and Cumulative Lists on a regular basis
- Complete an audit of corrections every six months



## 3.4 CHART CORRECTION EXAMPLES

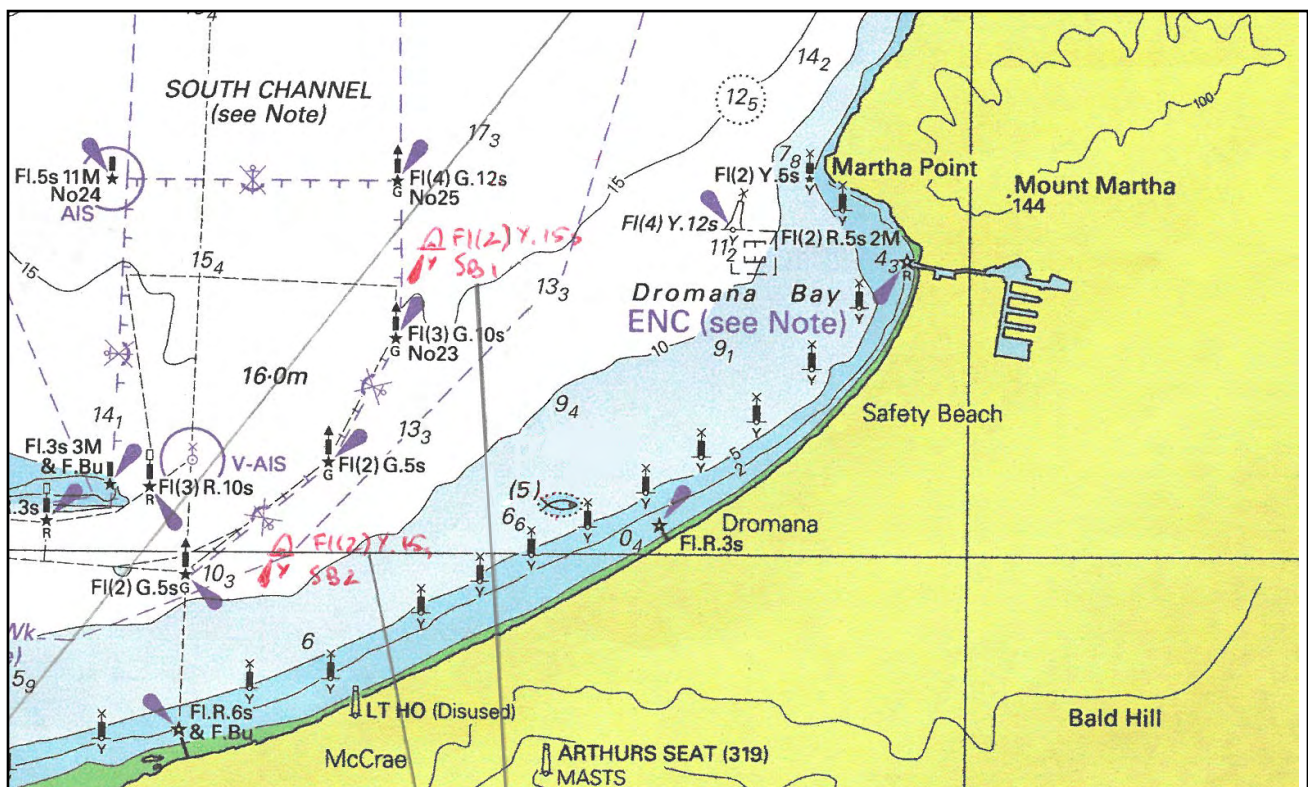
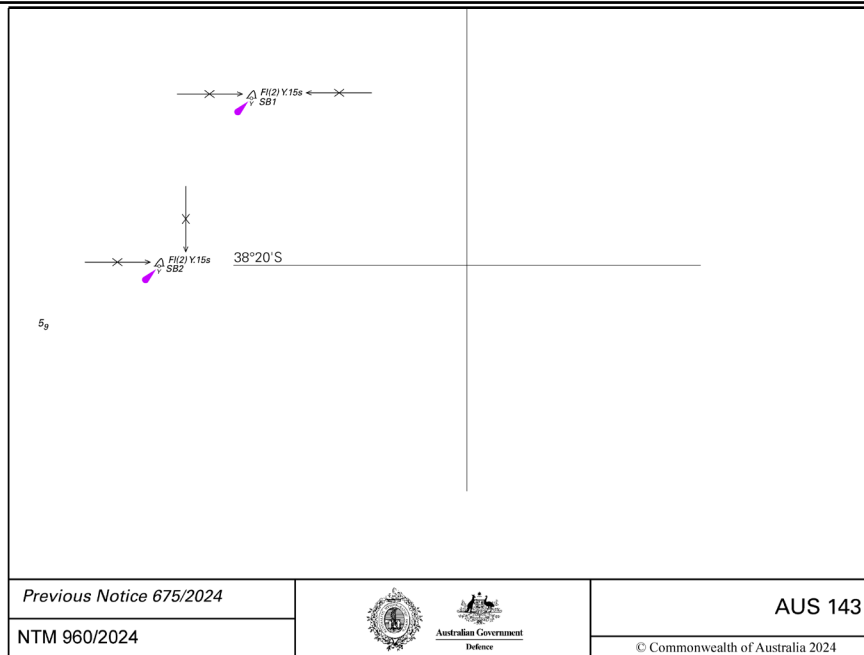
### 3.4.1 INSERTING A NAVIGATION AID

**960 AUSTRALIA - VICTORIA - Port Phillip - Dromana Bay - Light buoys westwards**  
Ports Victoria Notice 524/2024

**Aus 143 [675/2024]**

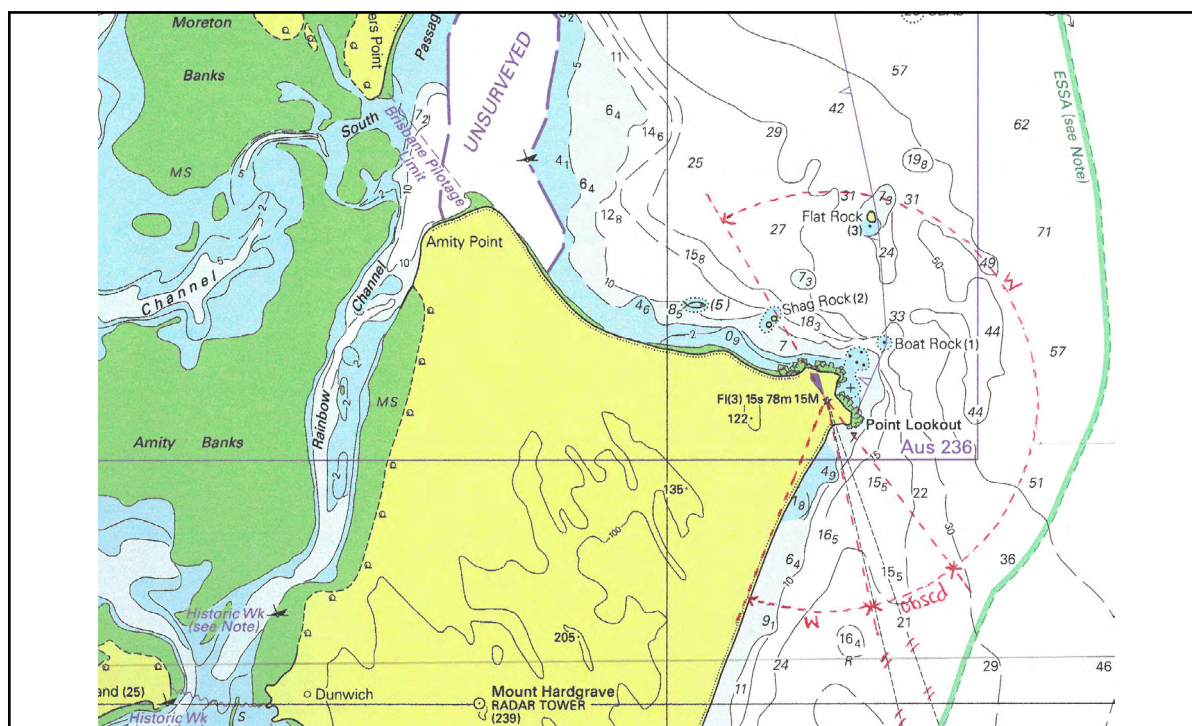
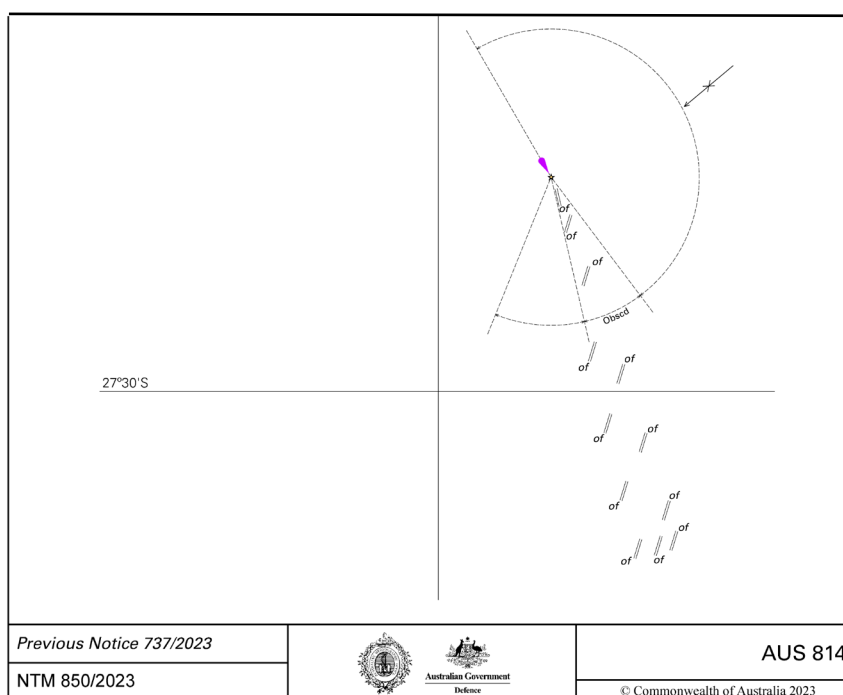
Insert special conical light buoy, *Fl(2)Y.15s SB1*, without topmark  
special conical light buoy, *Fl(2)Y.15s SB2*, without topmark

38° 17'.93 S 144° 56'.60 E  
38° 20'.01 S 144° 55'.15 E



### 3.4.2 INSERTING A LIGHT SECTOR

<b>850</b>	<b>AUSTRALIA - QUEENSLAND - Point Lookout - Light</b>		
Australian Maritime Safety Authority			
<b>Aus 236</b> [849/2023]			
Insert	light sector, <i>W 150° - 323° (173°)</i> , emanating from light	27° 25'.90 S	153° 32'.42 E
<b>Aus 814</b> [737/2023]			
Insert	light sectors emanating from light; <i>W 150° - 323° (173°)</i> <i>Obscd 323° - 347° (024°)</i> <i>W 347° - 022° (035°)</i>	27° 25'.90 S	153° 32'.42 E
Delete	light sector and legend, Obscd, emanating from light	27° 25'.9 S	153° 32'.4 E





### 3.4.3 AMEND A LIGHT CHARACTERISTIC

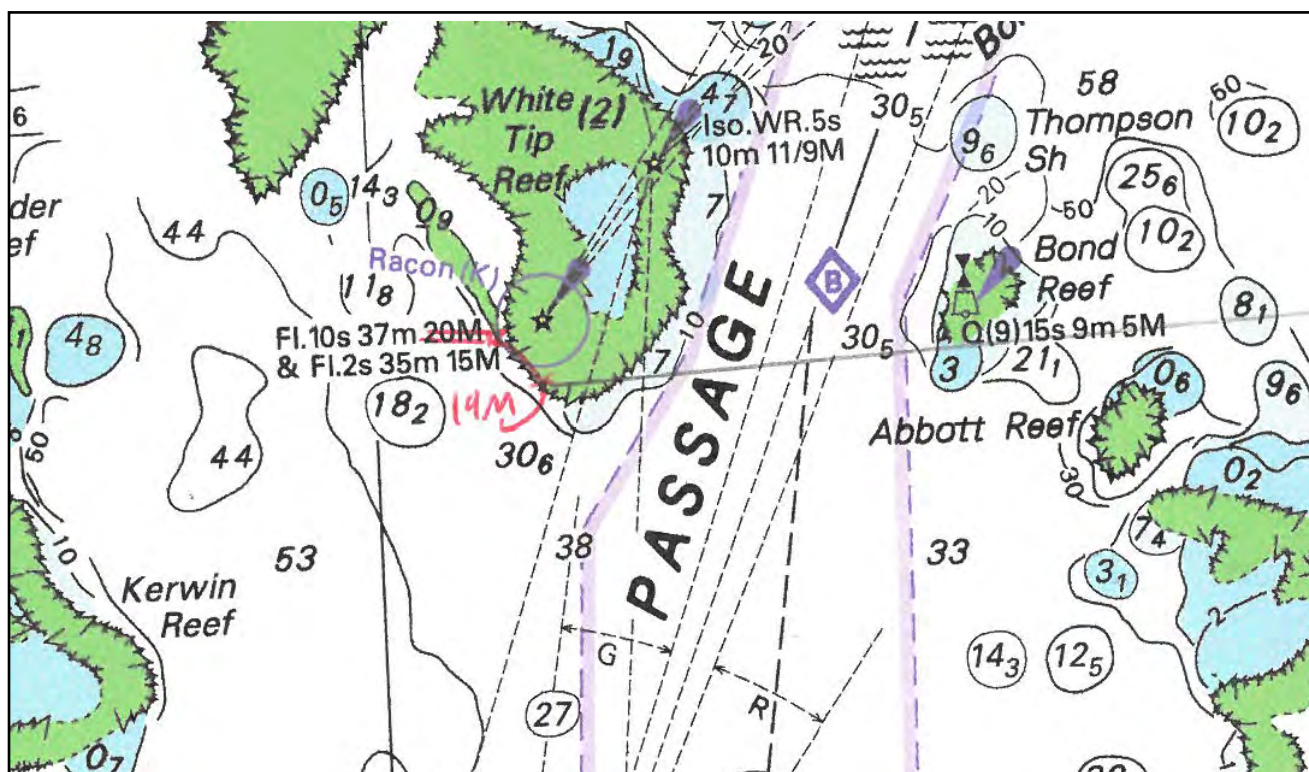
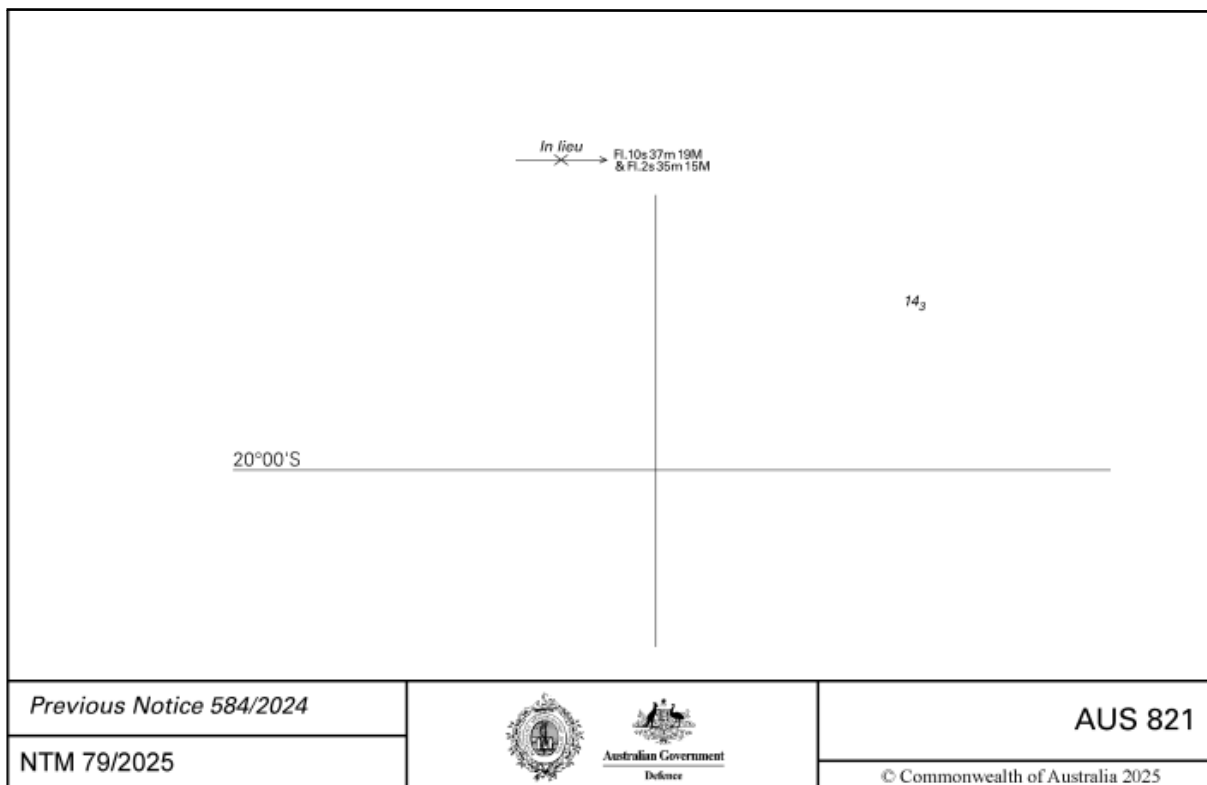
79 AUSTRIA - QUEENSLAND - Hydrographers Passage - White Tip Reef - Light range amended  
Australian Maritime Safety Authority

Aus 821 [584/2024]

Amend light to *Fl.10s 37m 19M & Fl.2s 35m 15M*

19° 55'.5 S

150° 16'.1 E



### 3.4.4 REPLACE

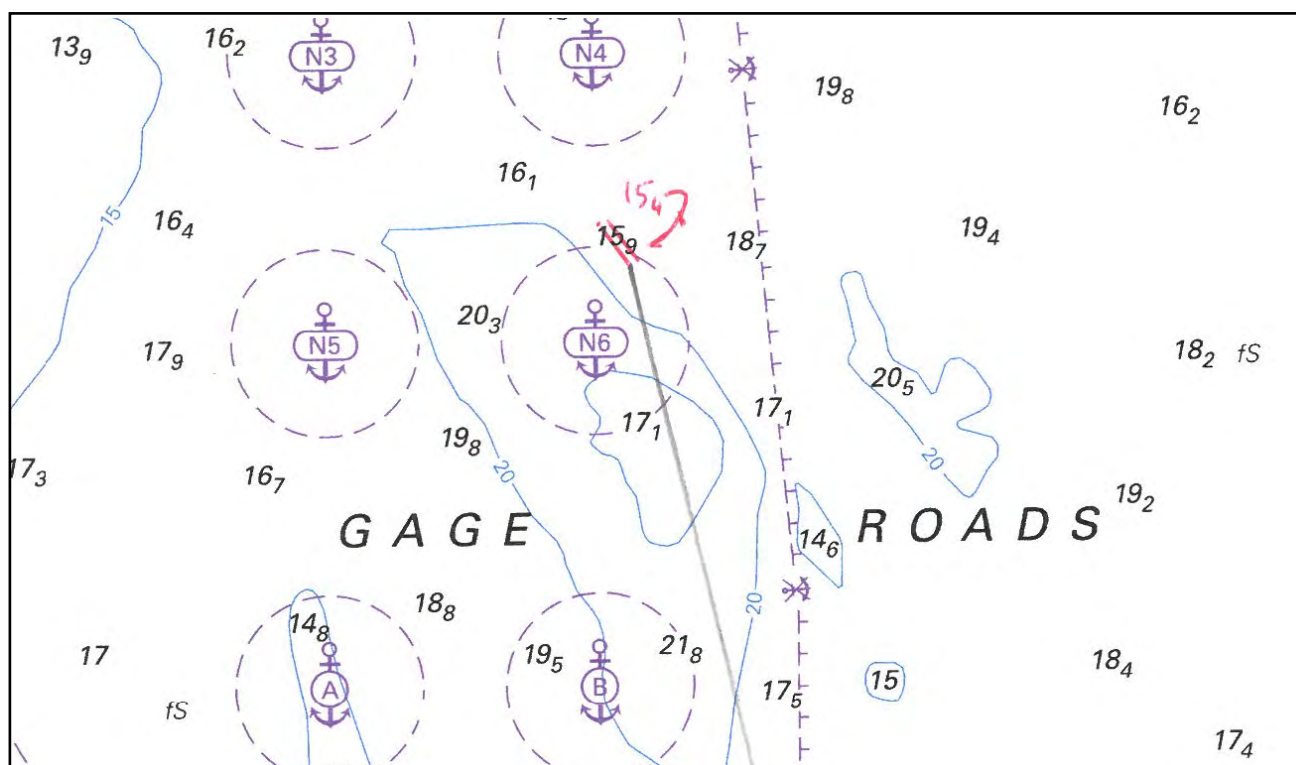
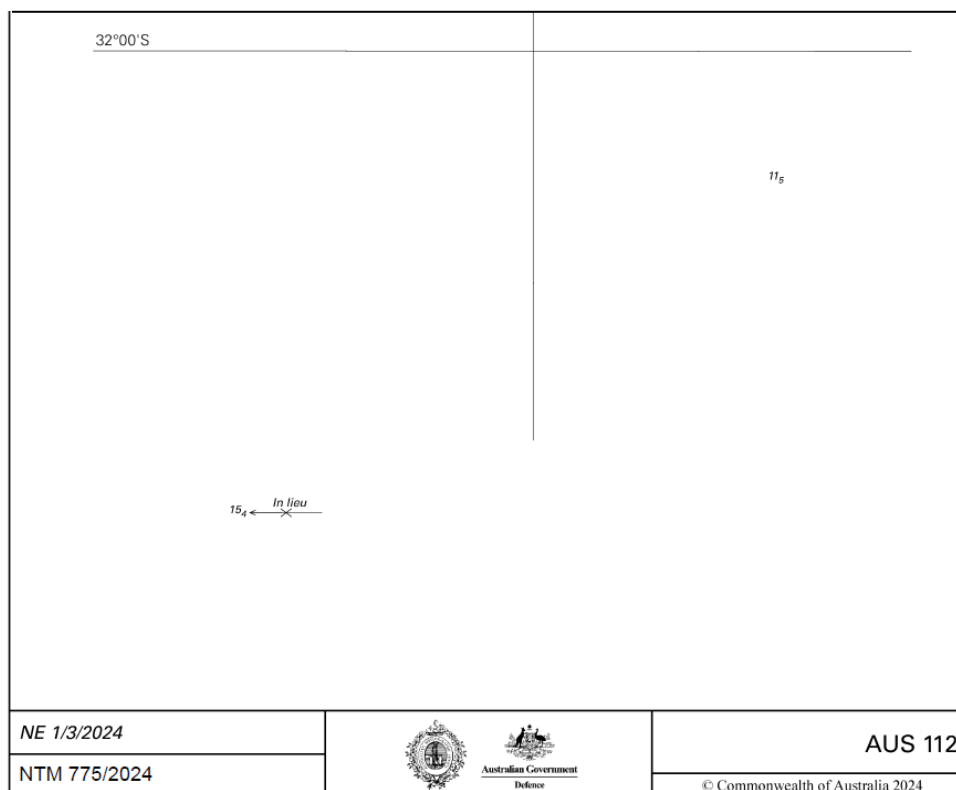
**775 AUSTRALIA - WESTERN AUSTRALIA - Fremantle - Depths**  
Fremantle Ports

**Aus 112** [NE 1/3/2024]

Replace depth, 15<sub>0</sub>m, with depth, 15<sub>4</sub>m

32° 01'.94 S

115° 40'.53 E



## CHAPTER 4      **UPDATING AUSTRALIAN NAUTICAL PUBLICATIONS**

### 4.1      **IS YOUR AUSTRALIAN NAUTICAL PUBLICATION UP TO DATE?**

If there are corrections to nautical publications, they will be published online in the Notices to Mariners (NtM) which are published fortnightly on the following website: [www.hydro.gov.au/n2m/notices.htm](http://www.hydro.gov.au/n2m/notices.htm)

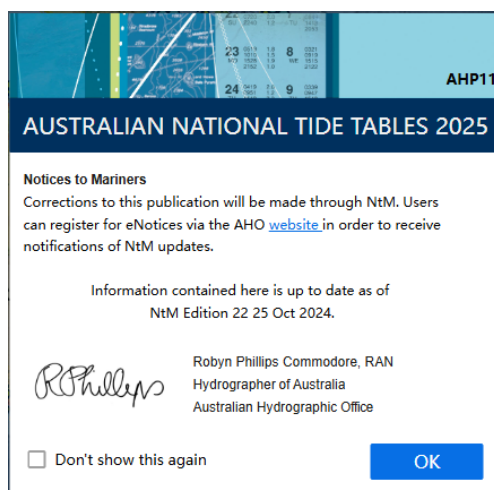
There are 3 main type of publications as described below:

#### 4.1.1      **WEB SERVICES**

A web service publication is an interactive website allowing users to access and search up to date information.

All web service publications are maintained and will be up to date when viewed on the website. The pop up window will notify users if an update has occurred.

Website: [services.hydro.gov.au/ant2025/](http://services.hydro.gov.au/ant2025/)



#### 4.1.2      **DIGITAL PUBLICATIONS**

A digital publication is any publication downloaded from the Australian Hydrographic Office (AHO) website and stored on a computer, usually in PDF format.

To check if your digital publication is up to date, check the footer of the PDF document. This will tell you the last NtM edition applied to that publication. This can be checked against the list of NtM updates on the website, as shown in the example below.

If your publication is out of date you will need to download an updated version from the website:

[www.hydro.gov.au/software/products/downloads.htm](http://www.hydro.gov.au/software/products/downloads.htm)

Printed copies of this electronic document are considered uncontrolled. Please refer to the AHO website for the latest version.  
Mariner's Handbook for Australian Waters NTM Edition 22 25th October 2024

- **Mariner's Handbook for Australian Waters (AHP 20) (5th Edition) - Free Download**

- 2025 Notices: nil
- 2024 Notices: 799
- 2023 Notices: 176, 219
- 2022 Notices: nil
- 2021 Notices: 41, 726, 1012
- 2020 Notices: 4, 187, 587, 941, 1020

### 4.1.3 PRINTED PUBLICATIONS

A printed publication is any publication you have in paper format.

If you need to update a printed copy of a publication, the following action should be taken: Check the record of amendments at the front of the book for any corrections that have been applied manually. The NtM number, year and page number should be recorded. The last notice applied in the example below is 799/24, and the last notice listed on the AHO website is 799/24. This publication is current.

#### RECORD OF AMENDMENTS

2019	2020	2021	2022
1130/2019	4/2020	41/2021	-
1238/2019	187/2020	726/2021	
	587/2020	1012/2021	<b>2023</b>
	941/2020		176/2023
	1020/2020		219/2023
			<b>2024</b>
			799/2024

## 4.2 HOW TO APPLY NOTICES TO MARINERS TO A PRINTED PUBLICATION

The NtM layout will vary between publications. For example the Mariners Handbook for Australian Waters notice will reference the page and paragraph numbers. The Australian National Tide Tables (ANTT) notices will only reference page numbers.

Below are examples of NtM for publications.

**176 AUSTRALIA - Product - Amendment to Mariner's Handbook for Australian Waters AHP20**  
Maritime Safety Queensland

Chapter 9.3.4 - Para 4 Immarsat C Messaging - Page 172

*Replace* paragraph with accompanying block

Chapter 9.3.5 - REEF VTS AREA - Page 173

*Replace* image with accompanying block

**550 AUSTRALIA - Product - Amendment to Australian National Tide Tables 2022**  
Australian Hydrographic Office

**ANTT 2022**

Page 348  
*Amend*

EDEN Correction to Chart Datum AUS 192 NE 09 June 2022 0.0

Page 351  
*Amend*

PORT ADELAIDE OUTER HARBOR Correction to Chart Datum AUS 781 NE 09 June 2022 0.0

Page 352  
*Amend*

PORT GILES Correction to Chart Datum AUS 781 NE 09 June 2022 0.0

Page 354  
*Amend*

THURSDAY ISLAND Correction to Chart Datum ENC AU5299P0 to AU5TIS01



There are three commands used to update publications:

#### 4.2.1 INSERT

Insert is used to add new data. It could vary from a small addition or a whole page. Small insertions are indicated with an arrow adjacent to the paragraph / line where the text needs to be added (see example on following page).

The insert may be large enough to create a new page. In this case, the page can be glued along the spine of the publication. The notes pages at the end of each chapter can also be utilised.

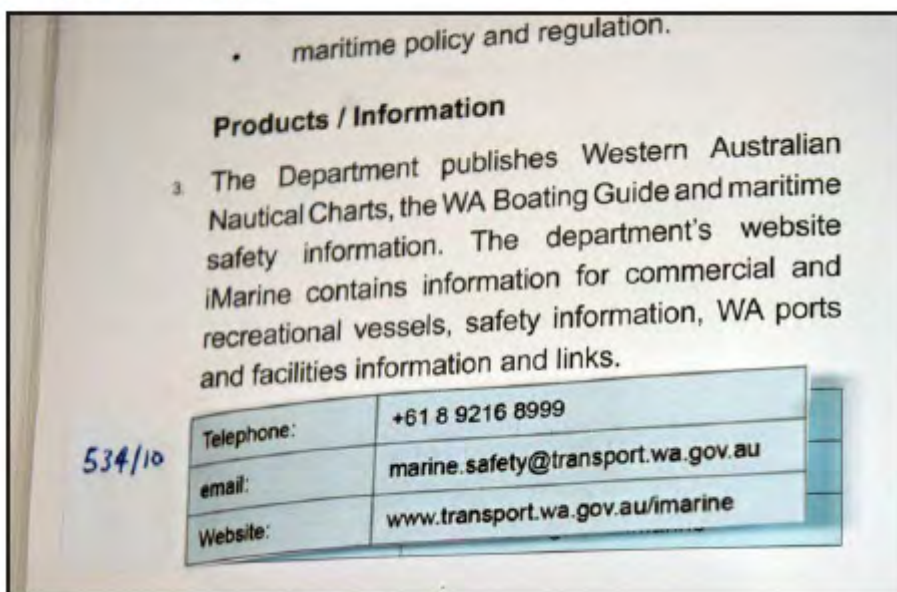
#### 4.2.2 AMEND/REPLACE

These two commands can be used when data needs to change. The amendment can vary from a small correction to a block correction.

Small correction: one line is to be used to cross out the text. Neatly add in new text near the deleted text.

Block correction: if the correction is too large, a block correction is used. If a whole page is substituted a black line may be placed on the left hand side of the text (where practical) indicating the corrected text - see below.

Example of a Block Correction



#### Small correction examples

Black line on the replacement page indicates location of amendment

#### 2.4.8 Department of Sustainability, Environment, Water, Population and Communities

1. The Department of Sustainability, Environment, Water Population and Communities (DSEWP&C) advises on, and implements policies and programs for, the protection and conservation of the environment. It encourages conservation and appreciation of natural and cultural heritage and ecologically sustainable management of coastal and marine resources. DSEWP&C is also responsible for administering environmental laws, which provide regulatory arrangements to ensure

147/10  
Page 243 Paragraph 13.9 (1) lines 1 - 4  
*Substitute* Accompanying block

Note: The arrow indicates an insert if the block is too large to paste over the existing text.

#### 13.9 Nautical Publications

1. In addition to the Australian Seafarers Handbook, the AHO produces two tide products, the paper Australian National Tide Tables and the Seafarer Tides digital tide tables on CD.

##### 13.9.1 Australian National Tide Tables

1. The Australian National Tide Tables (ANTT) contains information for over 500 ports in Australia, Papua New Guinea, Solomon Islands, Antarctica and East Timor. This information includes, but is not limited to:

- predictions for high and low water for each day of the year for over 80 Standard Ports
- predictions of maximum rates of tidal streams for Torres Strait and Port Phillip Heads
- tidal stream diagrams for Sydney, Broome and Darwin

752/10  
Page 243 Paragraph 13.9.1 (1) line 7  
*Delete* over 80  
*Insert* 82

953/09  
Page 243 Paragraph 13.9.1 (1) after line 10  
*Insert* Accompanying block

In some circumstances it may not be practical to paste the block onto the page in question. It may not fit over the original text or there may be a requirement to see the old text as well as the new. If this is the case follow the steps in sub-section 4.2.1 (Insert).

### 4.2.3 DELETE

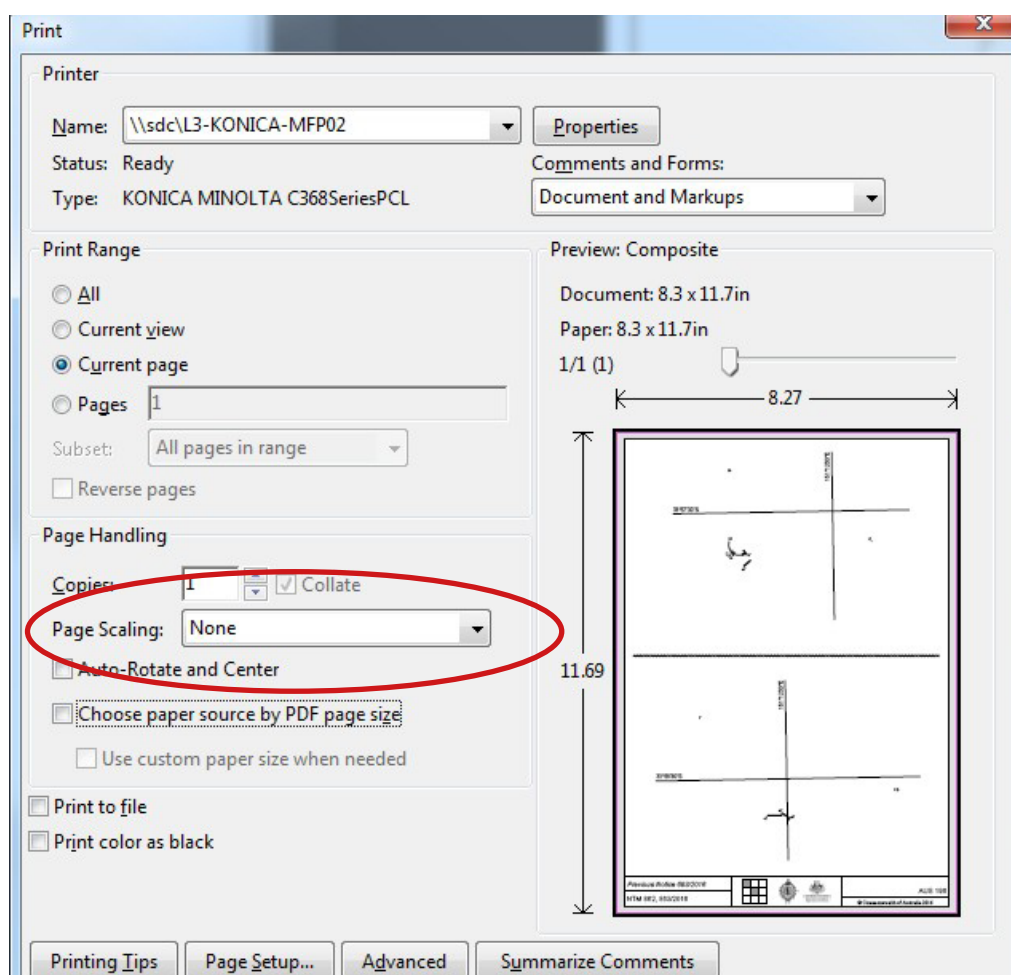
Delete is often used with the insert command. A strike though indicates a deletion.



### 4.3 IMPORTANT POINTS TO REMEMBER

It is important to keep good records when updating publications. The following steps will ensure your publications are up to date:

- Record the notice number and year adjacent to the correction
- Record the notice number and year in the Record of Amendment Table at the front of the publication
- Check NtM every fortnight on the website [www.hydro.gov.au/n2m/notices.htm](http://www.hydro.gov.au/n2m/notices.htm)
- Always hold the current edition - archive or destroy old editions to avoid confusion
- Complete an audit of corrections every six months
- A list of NtM are listed on the AHO website - by subscribing to eNotices, updates will be sent automatically via email. subscribe here: [www.hydro.gov.au/enotices/enotices.htm](http://www.hydro.gov.au/enotices/enotices.htm)
- When printing NtM accompanying blocks / pages ensure page size is set to A4 and select 'no page scaling' - see diagram below



## CHAPTER 5      **REPORTING DISCREPANCIES ON NAUTICAL CHARTS AND PUBLICATIONS**

### **5.1      REPORTING DISCREPANCIES**

Mariners are encouraged to report on any changes, discrepancies or omissions from charts and publications. Reporting may include:

- Changes to lights, buoys and beacons
- New and newly discovered obstructions
- Safe routes through poorly charted waters and safe anchorages not charted
- Any errors or omissions in navigation products

The simplest method of reporting a discrepancy may be by a Hydrographic Note which can be completed online, downloaded as a PDF (see link below), or by emailing [datacentre@hydro.gov.au](mailto:datacentre@hydro.gov.au)

Download the Hydrographic Note here: [www.hydro.gov.au/feedback/feedback-hydronote.htm](http://www.hydro.gov.au/feedback/feedback-hydronote.htm)

For more information on reporting discrepancies see AHP20 chapter 12.11

## CHAPTER 6 CHART CORRECTION LOG

### 6.1 CHART CORRECTION LOG

All nautical charts and publications carried by a vessel are subject to maritime legislation and regulation which states that all nautical charts and publications must be kept up to date.

The Chart Correction Log (CCL) provides the mariner with a simple way to record and demonstrate regular updating of ENC's, printed charts, publication corrections, navigational warnings and temporary and preliminary notices.

The CCL is available to assist the mariner with good record keeping and help the maritime authorities conduct routine audits. However, they are not mandatory - the mariner can design their own logging system.

The CCL is available for download from the AHO website as both PDF and a Microsoft Word table.

Website:	<a href="http://www.hydro.gov.au/software/products/downloads.htm">www.hydro.gov.au/software/products/downloads.htm</a>
----------	--

Information on how to update your paper charts can be found on the website.

Website:	<a href="http://www.hydro.gov.au/factsheets/FS_PNC-updating_paper_nautical_charts.pdf">www.hydro.gov.au/factsheets/FS_PNC-updating_paper_nautical_charts.pdf</a>
----------	--