



# AUSTRALIAN NOTICES TO MARINERS

## Notices 501 - 538

Published fortnightly by the Australian Hydrographic Office

Australian Notices to Mariners are the authority for correcting charts and publications published by the Australian Hydrographic Office covering Australia, Papua New Guinea, Solomon Islands, Australian Antarctic Territory and Timor-Leste.

Commodore D.G. MULLINS, RAN  
*Hydrographer of Australia*

---

### SECTIONS.

- I. **Australian Notices to Mariners, including blocks and notes.**
- II. **Hydrographic Reports.**

### SUPPLEMENTS.

- I. **Tracings**
  - II. **Cumulative List of Australian Notices to Mariners.**
  - III. **Cumulative List of Temporary and Preliminary Australian Notices to Mariners.**
  - IV. **Temporary and Preliminary Notices in force.**
- 
- 

© Commonwealth of Australia 2026

This work is copyright. Apart from any use permitted under the Copyright Act 1968, no part may be reproduced by any process, adapted, communicated or commercially exploited without prior written permission from The Commonwealth represented by the Australian Hydrographic Office.

## IMPORTANT NOTICE

This edition of Notices to Mariners includes all navigationally significant information affecting AHO products which the AHO has become aware of since the last edition. All reasonable efforts have been made to ensure the accuracy and completeness of the information, including third party information, on which these updates are based. The AHO regards third parties from which it receives information as reliable, however the AHO cannot verify all such information and errors may therefore exist. The AHO does not accept liability for errors in third party information.

---

## GENERAL INSTRUCTIONS

The substance of these notices should be inserted on the charts affected.

Bearings are referred to the true compass and are reckoned clockwise from North; those relating to lights are given as seen by an observer from seaward.

Positions quoted in notices relate to WGS84 which is the horizontal datum for all charts produced by the Australian Hydrographic Office.

The range quoted for a light is its nominal range.

Depths are with reference to the chart datum of each chart. Heights are above mean high water springs or mean higher high water, as appropriate.

The capital letter (P) or (T) after the number of any notice denotes a preliminary or temporary notice respectively, which are contained separately at the end of the permanent notices.

---

## REPORTING OF DANGERS

Mariners are particularly requested to notify the AUSTRALIAN HYDROGRAPHIC OFFICE, Locked Bag 8801 Wollongong, NSW 2500 (e-mail [datacentre@hydro.gov.au](mailto:datacentre@hydro.gov.au) or, alternatively by filling in and submitting the [Hydrographic Notes](#) forms located on the web site – [www.hydro.gov.au](http://www.hydro.gov.au)), immediately on the discovery of new dangers or suspected dangers to navigation. For changes or defects in aids to navigation notify AusSAR (Fax 02-6230 6868 or email [rccaus@amsa.gov.au](mailto:rccaus@amsa.gov.au)).

---

## AUTHORISED USE

Copies of Australian notices are available free of charge from the Australian Hydrographic Office (AHO) website ([www.hydro.gov.au](http://www.hydro.gov.au)) and through the eNotices (email) service ([www.hydro.gov.au/enotices/enotices.htm](http://www.hydro.gov.au/enotices/enotices.htm)).

Individual Notices may be copied for the purpose of inserting Notice substance on official charts and publications. Paper copies may be printed by chart agents and distributed to customers on a cost recovery basis. Participating chart agents are listed on the AHO website as providing a 'Paper Notices to Mariners' service ([www.hydro.gov.au/prodserv/agents-list.htm](http://www.hydro.gov.au/prodserv/agents-list.htm)). Copies of the notices may not be sold for profit without prior written agreement.

## NUMERICAL INDEX OF NOTICES TO MARINERS

### Edition No 12

Notices	Aus Chart, INT Chart, ENC Cell, AHP, BA Pubs
501	Products - New Charts, New Editions, Withdrawn Charts
502	Aus 55, 763
503	Aus 198, 489, 808, 4601, 4602, INT 601, 602
504	Aus 256, 827
505	Aus 817
506	Aus 260, 367, 822
507	Aus 65, 327, 328, 742, 743
508	Aus 319, 320
509	Aus 115
510	Aus 57, 59, 60
511	Aus 487, 790, 4060, 4074, 4601, 4709, INT 60, 74, 601, 709
512(T)	Aus 198, 808
513(T)	Aus 489, 807, 808, 4601, 4602, INT 601, 602
514(T)	Aus 268
515(T)	Aus 4
516(P)	Aus 245, 246, 819
517(T)	Aus 256
518(T)	Aus 260, 367, 822
519(T)	Aus 4
520(T)	Aus 309, 314, 315, 316, 319
521(T)	Aus 310
522(T)	Aus 65, 742
523(T)	Aus 328
524(T)	Aus 320, 730, 4603, 4722, INT 603, 722
525(T)	Aus 744
526(T)	Aus 4723, INT 723
527(T)	Aus 332
528(T)	Aus 745
529(T)	Aus 55
530(T)	Aus 118
531(T)	Aus 181, 357, 802
532(T)	Aus 349
533(T)	Aus 143, 155, 157
534(T)	Aus 155
535(T)	Aus 143, 155, 157
536(T)	Aus 143, 155
537(T)	Aus 143, 349, 357, 487, 801, 802, 4601, 4709, INT 601, 709
538(T)	Aus 487

## NUMERICAL INDEX OF CHARTS AFFECTED

### Edition No 12

Aus Chart	Notices
Aus 4	515(T), 519(T)
Aus 55	502, 529(T)
Aus 57	510
Aus 59	510
Aus 60	510
Aus 65	507, 522(T)
Aus 115	509
Aus 118	530(T)
Aus 143	533(T), 535(T), 536(T), 537(T)
Aus 155	533(T), 534(T), 535(T), 536(T)
Aus 157	533(T), 535(T)
Aus 181	531(T)
Aus 198	503, 512(T)
Aus 245	516(P)
Aus 246	516(P)
Aus 256	504, 517(T)
Aus 260	506, 518(T)
Aus 268	514(T)
Aus 309	520(T)
Aus 310	521(T)
Aus 314	520(T)
Aus 315	520(T)
Aus 316	520(T)
Aus 319	508, 520(T)
Aus 320	508, 524(T)
Aus 327	507
Aus 328	507, 523(T)
Aus 332	527(T)
Aus 349	532(T), 537(T)
Aus 357	531(T), 537(T)
Aus 367	506, 518(T)
Aus 487	511, 537(T), 538(T)
Aus 489	503, 513(T)
Aus 730	524(T)
Aus 742	507, 522(T)
Aus 743	507
Aus 744	525(T)
Aus 745	528(T)
Aus 763	502
Aus 790	511
Aus 801	537(T)
Aus 802	531(T), 537(T)
Aus 807	513(T)
Aus 808	503, 512(T), 513(T)
Aus 817	505
Aus 819	516(P)
Aus 822	506, 518(T)
Aus 827	504
Aus 4060	511
Aus 4074	511
Aus 4601	503, 511, 513(T), 537(T)
Aus 4602	503, 513(T)
Aus 4603	524(T)
Aus 4709	511, 537(T)

Aus Chart	Notices
Aus 4722	524(T)
Aus 4723	526(T)

INT Chart	Notices
INT 60	511
INT 74	511
INT 601	503, 511, 513(T), 537(T)
INT 602	503, 513(T)
INT 603	524(T)
INT 709	511, 537(T)
INT 722	524(T)
INT 723	526(T)

**501 AUSTRALIA - Products - New Charts, New Editions, Withdrawn Charts**

Australian Hydrographic Office

**New Charts**

<i>Chart</i>	<i>Title and Geographical limits</i>	<i>Scale</i>	<i>Publication Date</i>	<i>Remarks</i>
NIL				

**New Editions and Withdrawn Charts**

<i>Chart</i>	<i>Title</i>	<i>Scale</i>	<i>Publication Date</i>	<i>Remarks</i>
NIL				

**New Electronic Navigation Chart (Aus ENC)**

<i>Cell Name</i>	<i>Title</i>	<i>Publication Date</i>	<i>Remarks</i>
NIL			

**New S100 Products**

<i>Cell Name</i>	<i>Title</i>	<i>Publication Date</i>	<i>Remarks</i>
101AU005BTB01	Australia - New South Wales - Botany Bay and Port Hacking	4/6/2026	
101AU00434151	Australia - New South Wales - Central Coast - Botany Bay to Redhead Point	4/6/2026	
101AU00435151	Australia - New South Wales - Central Coast - Port Hacking	4/6/2026	
102AU006KUR01	Australia - New South Wales - Port Botany Kurnell Basin	4/6/2026	
102AU006BTB01	Australia - New South Wales - Port Botany Entrance Shoal	4/6/2026	
102AU006BTB02	Australia - New South Wales - Port Botany Brotherson Dock	4/6/2026	
104AU00_Botany Bay_20260101_20261231	Australia - New South Wales - Port Botany	4/6/2026	<i>Group of 36 water level files based on Astronomical Predictions</i>

**Chart permanently withdrawn**

Charts listed above as withdrawn no longer meet chart carriage requirements and should be marked as "superseded" and replaced with the new chart/ new edition listed prior to passage through the area covered by the new chart.

When placing orders with a chart agent between notice of forthcoming edition and its publication, mariners should advise whether their order pertains to the current edition or the new edition.

For further details refer to the AHO website at [www.hydro.gov.au](http://www.hydro.gov.au) for new edition and new chart stock arrival information.

**502 AUSTRALIA - Products - New Charts and New Editions to be published shortly**

Australian Hydrographic Office

**New Charts to be published shortly**

<i>Chart</i>	<i>Title</i>	<i>Scale</i>	<i>Remarks</i>
NIL			

**New Editions to be published shortly**

<i>Chart</i>	<i>Title</i>	<i>Scale</i>	<i>Remarks</i>
Aus 55	Australia - North West Coast - Western Australia - Approaches to Port Walcott	1:50 000	New edition with general updating throughout; including new bathymetric data.
Aus 763	Australia - South Coast - Western Australia - Cape Le Grand to Cape Pasley	1:150 000	New edition with general updating throughout; including new bathymetric data.

**503 AUSTRALIA - NEW SOUTH WALES - Eden to Cape Byron - Submarine cables eastwards**  
Gulf Agency Company (Australia)

**Aus 198 [414/2026]**

Insert submarine cable, between

33° 56'.891 S	151° 15'.406 E	
33° 57'.136 S	151° 16'.188 E	
33° 57'.575 S	151° 17'.063 E	
33° 58'.056 S	151° 17'.705 E	
33° 58'.184 S	151° 17'.916 E	
33° 58'.310 S	151° 18'.073 E	
33° 58'.453 S	151° 18'.295 E	
33° 58'.549 S	151° 18'.536 E	
33° 58'.631 S	151° 18'.933 E	
33° 58'.697 S	151° 19'.111 E	
33° 58'.779 S	151° 19'.214 E	
33° 59'.381 S	151° 19'.656 E	
33° 59'.601 S	151° 19'.749 E	
submarine cable, between	34° 04'.271 S	151° 19'.748 E
	34° 04'.878 S	151° 19'.685 E
	34° 05'.440 S	151° 19'.665 E

**Aus 489 [NE 17/4/2026]**

Insert submarine cable, between

submarine cable, between

33° 59'.97 S	151° 19'.78 E	
34° 29'.23 S	151° 18'.55 E	
34° 31'.81 S	151° 19'.71 E	
34° 34'.53 S	151° 23'.34 E	
34° 35'.77 S	151° 29'.04 E	
34° 37'.80 S	151° 32'.06 E	
34° 43'.50 S	151° 34'.21 E	
34° 50'.47 S	151° 41'.89 E	
35° 01'.42 S	152° 07'.60 E	
35° 08'.09 S	152° 18'.84 E	
35° 11'.97 S	152° 23'.01 E	
submarine cable, between	34° 25'.84 S	151° 45'.59 E
	34° 30'.87 S	151° 50'.42 E
	34° 51'.67 S	152° 28'.75 E
	34° 58'.26 S	152° 56'.84 E
	35° 00'.00 S	153° 29'.60 E
	34° 58'.42 S	153° 49'.66 E
	34° 52'.66 S	154° 07'.90 E
	34° 46'.37 S	154° 17'.19 E
	34° 35'.62 S	154° 25'.98 E
	34° 28'.89 S	154° 25'.43 E
	34° 23'.05 S	154° 22'.75 E
	34° 14'.87 S	154° 23'.33 E
	34° 09'.04 S	154° 28'.50 E
	34° 00'.95 S	154° 58'.42 E
	33° 56'.82 S	155° 02'.75 E
	33° 40'.78 S	155° 10'.09 E
	33° 08'.33 S	155° 29'.07 E
	32° 55'.52 S	155° 33'.95 E
	32° 25'.68 S	155° 36'.36 E
	32° 15'.83 S	155° 34'.51 E

**Aus 808 [NE 20/3/2026]**

Insert submarine cable, between

33° 59'.97 S	151° 19'.78 E
34° 02'.53 S	151° 19'.89 E
34° 15'.12 S	151° 19'.11 E
34° 29'.30 S	151° 18'.64 E
34° 31'.17 S	151° 19'.25 E
34° 32'.45 S	151° 20'.70 E
34° 34'.12 S	151° 22'.63 E
34° 35'.02 S	151° 25'.22 E
34° 35'.79 S	151° 29'.10 E
34° 37'.47 S	151° 31'.64 E
34° 39'.94 S	151° 33'.00 E
34° 43'.55 S	151° 34'.10 E
34° 48'.23 S	151° 39'.36 E

**Aus 4601 (INT 601) [NE 15/5/2026]**

**503 AUSTRALIA - NEW SOUTH WALES - Eden to Cape Byron - Submarine cables eastwards**

Insert	submarine cable, between	34° 26'.7 S	151° 44'.7 E
		34° 49'.7 S	152° 23'.1 E
		34° 58'.3 S	152° 56'.8 E
		34° 59'.3 S	153° 46'.9 E
		34° 51'.2 S	154° 12'.9 E
		34° 36'.4 S	154° 25'.1 E
		34° 11'.5 S	154° 23'.0 E
		34° 00'.7 S	155° 00'.0 E
		33° 30'.1 S	155° 16'.3 E
	submarine cable, between	34° 00'.0 S	151° 19'.8 E
		34° 31'.9 S	151° 18'.6 E
		34° 37'.4 S	151° 31'.3 E
		34° 48'.7 S	151° 38'.3 E
		35° 06'.3 S	152° 17'.0 E
		35° 19'.9 S	152° 30'.4 E
		36° 46'.4 S	152° 57'.8 E
		37° 19'.1 S	153° 20'.0 E

**Aus 4602 (INT 602) [464/2026]**

Insert	submarine cable, between	34° 26'.7 S	151° 44'.7 E
		34° 49'.7 S	152° 23'.1 E
		34° 58'.3 S	152° 56'.8 E
		34° 59'.3 S	153° 46'.9 E
		34° 51'.2 S	154° 12'.9 E
		34° 36'.4 S	154° 25'.1 E
		34° 11'.5 S	154° 23'.0 E
		34° 00'.7 S	155° 00'.0 E
		32° 57'.1 S	155° 34'.1 E
		32° 25'.7 S	155° 36'.4 E
		31° 45'.7 S	155° 31'.6 E
		31° 13'.2 S	155° 39'.9 E
		30° 56'.4 S	155° 34'.5 E
		30° 33'.2 S	155° 45'.9 E
		30° 20'.9 S	156° 08'.1 E
		29° 55'.2 S	156° 40'.3 E
		29° 48'.3 S	156° 58'.0 E
		28° 56'.2 S	157° 13'.5 E
		28° 43'.2 S	157° 29'.3 E
	submarine cable, between	33° 57'.0 S	151° 15'.8 E
		34° 00'.4 S	151° 20'.0 E
		34° 31'.9 S	151° 18'.6 E
		34° 37'.4 S	151° 31'.3 E
		34° 48'.7 S	151° 38'.3 E
		35° 06'.3 S	152° 17'.0 E
		35° 17'.2 S	152° 27'.7 E

**504 AUSTRALIA - QUEENSLAND - Cleveland Bay - Depth; ZOC**

Australian Hydrographic Office

**Aus 256 [NE 1/5/2026]**

Insert	magenta dashed line, between	19° 17'.25 S	146° 44'.93 E
		19° 17'.25 S	146° 45'.14 E
	depth, 12,m	19° 08'.44 S	146° 57'.77 E
Delete	magenta dashed line, between	19° 17'.2 S	146° 44'.9 E
		19° 17'.4 S	146° 44'.8 E
		19° 17'.5 S	146° 45'.0 E
		19° 17'.2 S	146° 45'.1 E
	depth, 13m	19° 08'.6 S	146° 57'.9 E
	magenta legend, A1	19° 17'.3 S	146° 45'.0 E

**Aus 827 [417/2026]**

Insert	depth, 12,m	19° 08'.44 S	146° 57'.77 E
Delete	depth, 13m	19° 08'.6 S	146° 57'.9 E

**505 AUSTRALIA - QUEENSLAND - Great Sandy Strait - Depths**  
Maritime Safety Queensland

**Aus 817** [NE 1/5/2026]

Insert [accompanying block](#)

25° 15'.5 S

152° 55'.7 E

**506 AUSTRALIA - QUEENSLAND - Ripple Island - Depth**  
UKHO

**Aus 260** [119/2025]

Insert depth, 7<sub>9</sub>m, enclosed by contour

22° 10'.97 S

150° 26'.46 E

**Aus 367** [1065/2025]

Insert depth, 7<sub>9</sub>m, enclosed by contour

22° 10'.97 S

150° 26'.46 E

**Aus 822** [119/2025]

Insert depth, 7<sub>9</sub>m, enclosed by contour

22° 10'.97 S

150° 26'.46 E

**507 AUSTRALIA - WESTERN AUSTRALIA - Barrow Island - Depths; rock**  
Department of Transport WA

**Aus 65 [191/2026]**

Insert	depth, 9 <sub>5</sub> m, enclosed by contour	20° 38'.42 S	115° 25'.87 E
	depth, 10m, enclosed by contour	20° 38'.64 S	115° 25'.88 E
	depth, 4 <sub>9</sub> m, enclosed by contour	20° 39'.69 S	115° 24'.87 E
	depth, 1 <sub>6</sub> m, enclosed by contour	20° 44'.88 S	115° 20'.64 E
	depth, 1m, enclosed by contour with legend, R	20° 49'.23 S	115° 18'.77 E
Replace	depth, 10 <sub>2</sub> m, with depth, 8 <sub>6</sub> m, enclosed by contour	20° 38'.1 S	115° 26'.0 E
Delete	depth, 11 <sub>4</sub> m	20° 38'.5 S	115° 25'.8 E

**Aus 327 [238/2026]**

Insert	contour, between	20° 37'.91 S	115° 26'.28 E
		20° 38'.61 S	115° 25'.89 E
		20° 37'.87 S	115° 25'.81 E
	depth, 8 <sub>6</sub> m	20° 38'.09 S	115° 26'.02 E
Replace	depth, 8 <sub>1</sub> m, with depth, 4 <sub>9</sub> m, enclosed by contour	20° 39'.6 S	115° 24'.8 E
Delete	contour, between	20° 37'.9 S	115° 26'.3 E
		20° 37'.9 S	115° 25'.8 E
	depth, 8 <sub>6</sub> m	20° 37'.7 S	115° 26'.0 E

**Aus 328 [470/2026]**

Insert	contour, between	20° 37'.91 S	115° 26'.28 E
		20° 38'.61 S	115° 25'.89 E
		20° 37'.87 S	115° 25'.81 E
	depth, 8 <sub>6</sub> m	20° 38'.09 S	115° 26'.02 E
Replace	depth, 8 <sub>1</sub> m, with depth, 4 <sub>9</sub> m, enclosed by contour	20° 39'.6 S	115° 24'.8 E
Delete	contour, between	20° 37'.9 S	115° 26'.3 E
		20° 37'.9 S	115° 25'.8 E
	depth, 8 <sub>6</sub> m	20° 37'.7 S	115° 26'.0 E

**Aus 742 [470/2026]**

Insert	depth, 8 <sub>6</sub> m, enclosed by contour	20° 38'.09 S	115° 26'.02 E
	depth, 9 <sub>5</sub> m, enclosed by contour	20° 38'.42 S	115° 25'.87 E
	depth, 4 <sub>9</sub> m, enclosed by contour	20° 39'.69 S	115° 24'.87 E
	depth, 1 <sub>6</sub> m, enclosed by contour	20° 44'.88 S	115° 20'.64 E
	depth, 1m, enclosed by contour with legend, R	20° 49'.23 S	115° 18'.77 E
Delete	depth, 3 <sub>3</sub> m	20° 44'.8 S	115° 20'.6 E
	depth, 6m	20° 49'.2 S	115° 18'.9 E

**Aus 743 [420/2026]**

Insert	depth, 1m, enclosed by contour with legend, R	20° 49'.23 S	115° 18'.77 E
Delete	depth, 6m	20° 49'.2 S	115° 18'.9 E

**508 AUSTRALIA - WESTERN AUSTRALIA - Browse Island - Mooring Buoy**  
Australian Hydrographic Office

**Aus 319 [469/2026]**

Replace	lit mooring buoy with yellow cylindrical mooring buoy	14° 01'.2 S	123° 17'.2 E
---------	---	-------------	--------------

**Aus 320 [139/2026]**

Replace	lit mooring buoy with yellow cylindrical mooring buoy	14° 01'.2 S	123° 17'.2 E
---------	---	-------------	--------------

**509 AUSTRALIA - WESTERN AUSTRALIA - Bunbury - Koombana Bay - Contour**

Department of Transport WA

**Aus 115 [94/2026]**

Insert	contour, between	33° 18'.65 S	115° 38'.56 E
		33° 18'.66 S	115° 38'.59 E
		33° 18'.68 S	115° 38'.59 E

Delete	contour, between	33° 18'.6 S	115° 38'.6 E
		33° 18'.7 S	115° 38'.6 E

**510 AUSTRALIA - WESTERN AUSTRALIA - Dampier - Depths**

Precision Hydrographic Services

**Aus 57 [325/2026]**

Insert	<a href="#">accompanying block</a>	20° 36'.0 S	116° 41'.0 E
--------	------------------------------------	-------------	--------------

**Aus 59 [419/2026]**

Insert	<a href="#">accompanying block A</a>	20° 36'.93 S	116° 44'.85 E
	<a href="#">accompanying block B</a>	20° 38'.35 S	116° 43'.65 E

**Aus 60 [274/2026]**

Insert	<a href="#">accompanying block</a>	20° 38'.6 S	116° 43'.6 E
--------	------------------------------------	-------------	--------------

**511 AUSTRALIA - BASS STRAIT - Bell Reef - Depths**

Australian Hydrographic Office

**Aus 487 [428/2026]**

Insert	<a href="#">accompanying block</a>	40° 20'.0 S	144° 14'.0 E
--------	------------------------------------	-------------	--------------

**Aus 790 [NE 2/8/2024]**

Insert	<a href="#">accompanying block</a>	40° 22'.0 S	144° 03'.5 E
--------	------------------------------------	-------------	--------------

**Aus 4060 (INT 60) [NE 29/5/2026]**

Insert	depth, 5 <sub>7</sub> m	40° 23'.3 S	144° 05'.6 E
--------	-------------------------	-------------	--------------

Delete	depth, 36m	40° 34'.0 S	144° 23'.0 E
--------	------------	-------------	--------------

**Aus 4074 (INT 74) [NE 15/5/2026]**

Insert	depth, 5 <sub>7</sub> m	40° 23'.3 S	144° 05'.6 E
--------	-------------------------	-------------	--------------

Delete	depth, 36m	40° 34'.0 S	144° 23'.0 E
--------	------------	-------------	--------------

**Aus 4601 (INT 601) [503/2026]**

Replace	depth, 14m, with depth, 5 <sub>7</sub> m	40° 24'.0 S	144° 05'.0 E
---------	--	-------------	--------------

Delete	legend, SD	40° 24'.0 S	143° 59'.0 E
--------	------------	-------------	--------------

**Aus 4709 (INT 709) [NE 15/5/2026]**

Replace	depth, 14m, with depth, 5 <sub>7</sub> m	40° 24'.0 S	144° 05'.0 E
---------	--	-------------	--------------

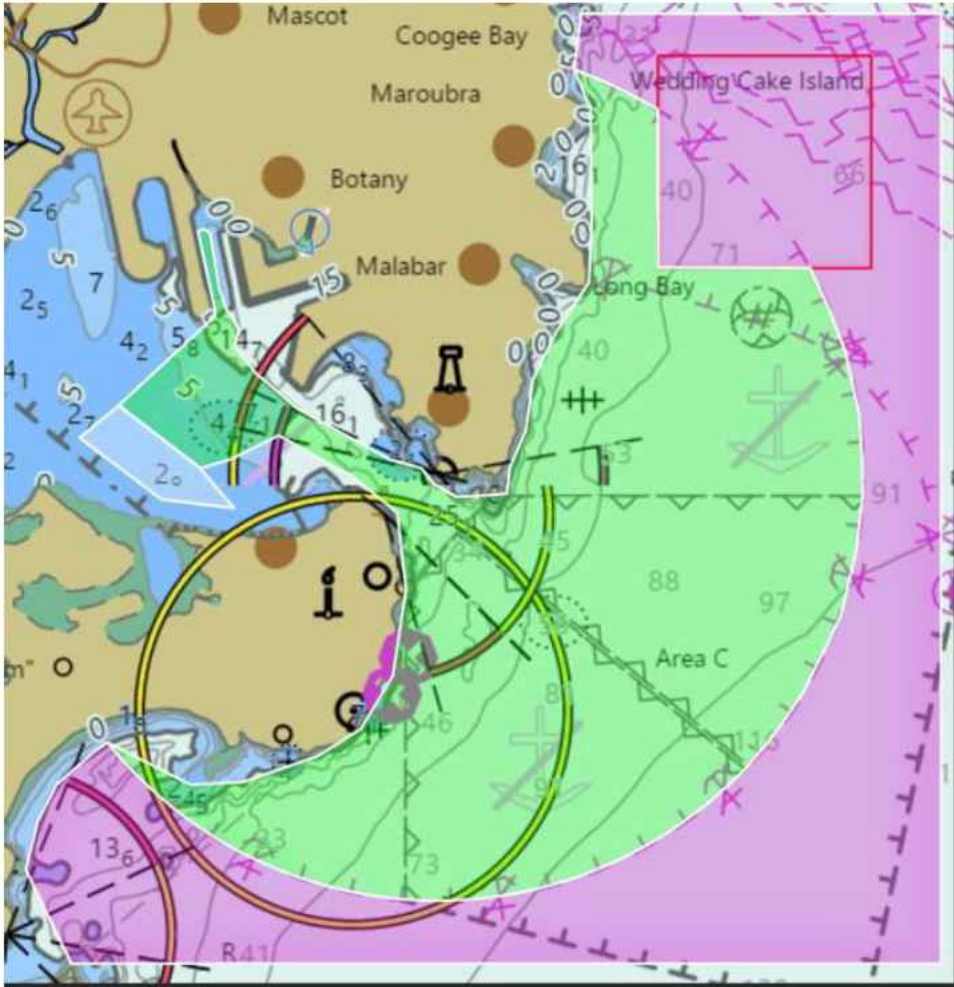
Delete	legend, SD	40° 24'.0 S	144° 12'.0 E
--------	------------	-------------	--------------

**512(T)/2026 AUSTRALIA - NEW SOUTH WALES - Botany Bay - Autonomous vessel operations**  
Transport for NSW Notice 17(T)/2026

Autonomous vessel operations are underway in Botany Bay and the Tasman Sea in the vicinity of position 34° 00'.84 S 151° 14'.57 E.

Mariners are advised to navigate with caution in the area.

Figure 2: Operational zones



**Legend:**

- Green - Autonomous Transit Zone*
- White - Restricted Autonomous Zone*
- Magenta - Unrestricted Autonomous Zone [Excluding Ports area]*

**Chart temporarily affected - Aus 198 - Aus 808**

**513(T)/2026 AUSTRALIA - NEW SOUTH WALES - Jervis Bay - Live firing southeastwards**  
Department of Defence

During the period 24 to 25 June 2026, live firing will be conducted by Navy helicopters in an area within a 20M radius of position 35° 22'.14 S 150° 59'.74 E.

Mariners are to remain outside of the designated area.

**Chart temporarily affected - Aus 489 - Aus 807 - Aus 808 - Aus 4601 (INT 601) - Aus 4602 (INT 602)**

**514(T)/2026 AUSTRALIA - QUEENSLAND - Bowen - Port Denison - Light buoy off station**  
Maritime Safety Queensland Notice 295(T)/2026

The starboard lateral light buoy, *Fl.G.4s M5* (20° 02'.34 S 148° 15'.78 E), is off station.

Mariners are advised to navigate with caution in the area.

**Chart temporarily affected - Aus 268**

**515(T)/2026 AUSTRALIA - QUEENSLAND - Boyd Point - Scientific instruments**  
Maritime Safety Queensland Notice 278(T)/2026

Special light buoys, *Fl(5).Y.20s*, exist in the following positions:

12° 50'.79 S 141° 36'.89 E

12° 54'.50 S 141° 36'.09 E.

Mariners are advised to navigate with caution in the area.

**Chart temporarily affected - Aus 4**

**516(P)/2026 AUSTRALIA - QUEENSLAND - Gladstone - East Channel - Shoaling**  
Maritime Safety Queensland

Latest survey indicates shoaler depths than those charted exist in an area bounded by the following positions:

23° 50'.95 S 151° 24'.59 E

23° 52'.01 S 151° 24'.25 E

23° 52'.94 S 151° 23'.68 E

23° 53'.05 S 151° 23'.56 E

23° 53'.23 S 151° 22'.48 E

23° 53'.10 S 151° 22'.34 E

23° 52'.91 S 151° 23'.04 E

23° 52'.51 S 151° 23'.59 E

23° 50'.90 S 151° 24'.36 E.

Mariners are advised to navigate with caution in the area.

Charts will be updated in due course.

**Chart which will be affected - Aus 245 - Aus 246 - Aus 819**

**517(T)/2026 AUSTRALIA - QUEENSLAND - Magnetic Island - Horseshoe Bay - Wreck removed**  
*Former Notice* - 291(T)/2026 is cancelled  
Maritime Safety Queensland Notice 130(T)/2026

Cancel this notice on receipt.

**Chart formerly affected - Aus 256**

**518(T)/2026 AUSTRALIA - QUEENSLAND - Townsend Island - Entry prohibited area removed**  
*Former Notice* - 333(T)/2026 is cancelled  
Maritime Safety Queensland

Cancel this notice on receipt.

**Chart formerly affected - Aus 260 - Aus 367 - Aus 822**

**519(T)/2026 AUSTRALIA - QUEENSLAND - Weipa - Dredging operations; survey operations**

Maritime Safety Queensland Notice 306(T)/2024

TSHD *Brisbane* and survey vessel *Sounds Pacific* are conducting dredging and survey operations in the Port of Weipa (12° 40'.70 S 141° 47'.00 E).

The dredge will monitor VHF Ch 12 and Ch 16.

Mariners are advised to navigate with caution in the area.

**Chart temporarily affected - Aus 4****520(T)/2026 AUSTRALIA - NORTHERN TERRITORY - WESTERN AUSTRALIA - Darwin to Eugene McDermont Shoal - Survey operations completed westwards**

Former Notice - 434(T)/2026 is cancelled  
INPEX

Cancel this notice on receipt.

**Chart formerly affected - Aus 309 - Aus 314 - Aus 315 - Aus 316 - Aus 319****521(T)/2026 AUSTRALIA - TIMOR SEA - Evans Shoal - Subsea operations eastwards**

Santos

On or about 22 June 2026, vessel *VE Constructor* will begin conducting subsea operations in the vicinity of position 19° 50'.21 S 130° 15'.45 E.

Mariners are advised to navigate with caution in the area.

**Chart temporarily affected - Aus 310****522(T)/2026 AUSTRALIA - WESTERN AUSTRALIA - Barrow Island - Nav aids restored**

Former Notice - 379(T)/2026 is cancelled  
Department of Transport WA

Cancel this notice on receipt.

**Chart formerly affected - Aus 65 - Aus 742****523(T)/2026 AUSTRALIA - WESTERN AUSTRALIA - Barrow Island - Subsea operations; survey operations northwestwards**

Former Notice - 112(T)/2026 is cancelled  
DOF

Vessel *Skandi Inventor* will be conducting subsea operations and survey operations in positions 19° 48'.59 S 114° 36'.34 E and 19° 52'.73 S 114° 36'.48 E. A 5M radius cautionary zone and a 0.5M radius exclusion zone exists around each position.

Mariners are advised to navigate with caution in the area.

**Chart temporarily affected - Aus 328****524(T)/2026 AUSTRALIA - WESTERN AUSTRALIA - Champagny Islands - Degerando Island - Light relit**

Former Notice - 484(T)/2026 is cancelled  
Department of Transport WA Notice 6871/2026

Cancel this notice on receipt.

**Chart formerly affected - Aus 320 - Aus 730 - Aus 4603 (INT 603) - Aus 4722 (INT 722)**

**525(T)/2026 AUSTRALIA - WESTERN AUSTRALIA - Exmouth Gulf - Scientific instrument**  
Department of Transport WA Notice 6879(T)/2026

A special pillar light buoy, *Fl.Y.2-5s*, exists in position 22° 11'.00 S 114° 15'.90 E.

Mariners are advised to navigate with caution in the area.

**Chart temporarily affected - Aus 744**

**526(T)/2026 AUSTRALIA - WESTERN AUSTRALIA - Exmouth Plateau - Subsea operations completed**  
*Former Notice - 160(T)/2026 is cancelled*  
Subsea 7

Cancel this notice on receipt.

**Chart formerly affected - Aus 4723 (INT 723)**

**527(T)/2026 AUSTRALIA - WESTERN AUSTRALIA - Kalbarri - Scientific instrument northwards**  
RPS Group

A special light buoy, *Q(5)Y.20s*, exists in position 27° 22'.87 S 113° 59'.40 E.

**Chart temporarily affected - Aus 332**

**528(T)/2026 AUSTRALIA - WESTERN AUSTRALIA - Ningaloo Reef - Sandy Point to Winderabandi Point - Scientific instruments recovered westwards**  
*Former Notice - 344(T)/2026 is cancelled*  
The University of Western Australia

Cancel this notice on receipt.

**Chart formerly affected - Aus 745**

**529(T)/2026 AUSTRALIA - WESTERN AUSTRALIA - Port Walcott - Light beacon unlit**  
Department of Transport WA Notice 6890/2026

The port lateral light beacon, *Fl.R.2s No20* (20° 30'.76 S 117° 15'.28 E), is unlit.

**Chart temporarily affected - Aus 55**

**530(T)/2026 AUSTRALIA - WESTERN AUSTRALIA - Princess Royal Harbour - Light altered**  
Department of Transport WA Notice 6882/2026

The light beacon, *F.Bu* (35° 03'.06 S 117° 52'.30 E), has been temporarily altered to *Fl.W*.

**Chart temporarily affected - Aus 118**

**531(T)/2026 AUSTRALIA - VICTORIA - Ninety Mile Beach - Survey operations completed**  
*Former Notice - 128(T)/2026 is cancelled*  
Australian Maritime Safety Authority

Cancel this notice on receipt.

**Chart formerly affected - Aus 181 - Aus 357 - Aus 802**

**532(T)/2026 AUSTRALIA - VICTORIA - Port Campbell - Obstruction removed**

*Former Notice* - 496(T)/2026 is cancelled  
Amplitude Energy

Cancel this notice on receipt.

**Chart formerly affected - Aus 349****533(T)/2026 AUSTRALIA - VICTORIA - Port Phillip - Kirk Point - Sampling works eastwards completed**

*Former Notice* - 310(T)/2025 is cancelled  
Ports Victoria Notice 283(T)/2026

Cancel this notice on receipt.

**Chart formerly affected - Aus 143 - Aus 155 - Aus 157****534(T)/2026 AUSTRALIA - VICTORIA - Port Phillip - Hobsons Bay - Light relit**

*Former Notice* - 455(T)/2026 is cancelled  
Parks Victoria Notice 280/2026

Cancel this notice on receipt.

**Chart formerly affected - Aus 155****535(T)/2026 AUSTRALIA - VICTORIA - Port Phillip - Kirk Point - Geotechnical operations eastwards**

*Former Notice* - 1056(T)/2025 is cancelled  
Ports Victoria Notice 145(T)/2026

Cancel this notice on receipt.

**Chart formerly affected - Aus 143 - Aus 155 - Aus 157****536(T)/2026 AUSTRALIA - VICTORIA - Port Phillip - Sandringham - Light beacon unlit**

Parks Victoria Notice 297(T)/2026

The isolated danger light beacon, *Fl(2)10s* (37° 57'.16 S 144° 59'.75 E), is unlit.

Mariners are advised to navigate with caution in the area.

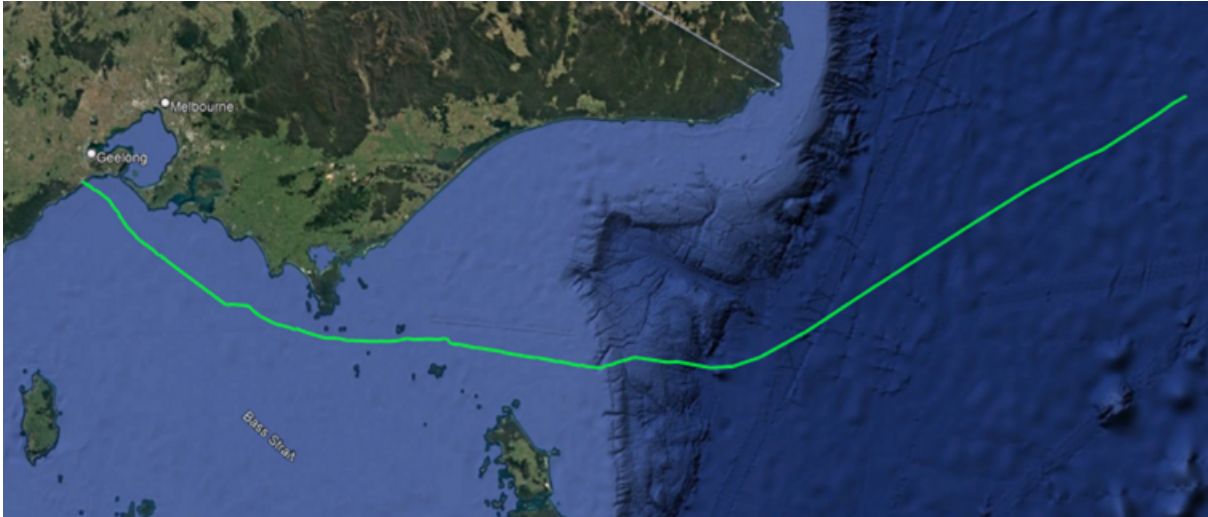
**Chart temporarily affected - Aus 143 - Aus 155**

**537(T)/2026 AUSTRALIA - BASS STRAIT - Cable laying operations**

Gulf Agency Company (Australia)

Cable laying operations will be conducted in Bass Strait as part of the Honomoana cable system. Cable lay and post lay inspection activities will occur along the route shown in the diagram and mariners are advised to keep clear of vessel, *Responder* during activities. Further advice on specific areas of activity will be issued through the AUSCOAST warning system.

*Note:* For e-notice users, please see full edition for map.



**Chart temporarily affected - Aus 143 - Aus 349 - Aus 357 - Aus 487 - Aus 801 - Aus 802 - Aus 4601 (INT 601) - Aus 4709 (INT 709)**

**538(T)/2026 AUSTRALIA - BASS STRAIT - Light buoys**

Australian Maritime Safety Authority Warning 206/2026

8 special light buoys, *Fl.3s*, exist within 1.5M radius of 39° 50'.23 S 145° 48'.40 E. 2.5M clearance requested.

**Chart temporarily affected - Aus 487**

II

**HYDROGRAPHIC REPORTS**

NIL