



# AUSTRALIAN NOTICES TO MARINERS

## Notices 354 - 408

Published fortnightly by the Australian Hydrographic Office

Australian Notices to Mariners are the authority for correcting charts and publications published by the Australian Hydrographic Office covering Australia, Papua New Guinea, Solomon Islands, Australian Antarctic Territory and Timor-Leste.

Commodore D.G. MULLINS, RAN  
*Hydrographer of Australia*

---

### SECTIONS.

- I. **Australian Notices to Mariners, including blocks and notes.**
- II. **Hydrographic Reports.**

### SUPPLEMENTS.

- I. **Tracings**
  - II. **Cumulative List of Australian Notices to Mariners.**
  - III. **Cumulative List of Temporary and Preliminary Australian Notices to Mariners.**
  - IV. **Temporary and Preliminary Notices in force.**
- 
- 

© Commonwealth of Australia 2026

This work is copyright. Apart from any use permitted under the Copyright Act 1968, no part may be reproduced by any process, adapted, communicated or commercially exploited without prior written permission from The Commonwealth represented by the Australian Hydrographic Office.

## IMPORTANT NOTICE

This edition of Notices to Mariners includes all navigationally significant information affecting AHO products which the AHO has become aware of since the last edition. All reasonable efforts have been made to ensure the accuracy and completeness of the information, including third party information, on which these updates are based. The AHO regards third parties from which it receives information as reliable, however the AHO cannot verify all such information and errors may therefore exist. The AHO does not accept liability for errors in third party information.

---

## GENERAL INSTRUCTIONS

The substance of these notices should be inserted on the charts affected.

Bearings are referred to the true compass and are reckoned clockwise from North; those relating to lights are given as seen by an observer from seaward.

Positions quoted in notices relate to WGS84 which is the horizontal datum for all charts produced by the Australian Hydrographic Office.

The range quoted for a light is its nominal range.

Depths are with reference to the chart datum of each chart. Heights are above mean high water springs or mean higher high water, as appropriate.

The capital letter (P) or (T) after the number of any notice denotes a preliminary or temporary notice respectively, which are contained separately at the end of the permanent notices.

---

## REPORTING OF DANGERS

Mariners are particularly requested to notify the AUSTRALIAN HYDROGRAPHIC OFFICE, Locked Bag 8801 Wollongong, NSW 2500 (e-mail [datapcentre@hydro.gov.au](mailto:datapcentre@hydro.gov.au) or, alternatively by filling in and submitting the [Hydrographic Notes](#) forms located on the web site – [www.hydro.gov.au](http://www.hydro.gov.au)), immediately on the discovery of new dangers or suspected dangers to navigation. For changes or defects in aids to navigation notify AusSAR (Fax 02-6230 6868 or email [rccaus@amsa.gov.au](mailto:rccaus@amsa.gov.au)).

---

## AUTHORISED USE

Copies of Australian notices are available free of charge from the Australian Hydrographic Office (AHO) website ([www.hydro.gov.au](http://www.hydro.gov.au)) and through the eNotices (email) service ([www.hydro.gov.au/enotices/enotices.htm](http://www.hydro.gov.au/enotices/enotices.htm)).

Individual Notices may be copied for the purpose of inserting Notice substance on official charts and publications. Paper copies may be printed by chart agents and distributed to customers on a cost recovery basis. Participating chart agents are listed on the AHO website as providing a 'Paper Notices to Mariners' service ([www.hydro.gov.au/prodserv/agents-list.htm](http://www.hydro.gov.au/prodserv/agents-list.htm)). Copies of the notices may not be sold for profit without prior written agreement.

## NUMERICAL INDEX OF NOTICES TO MARINERS

### Edition No 9

Notices	Aus Chart, INT Chart, ENC Cell, AHP, BA Pubs
354	Aus 256, 377, 817, 818
355	Aus 826, 4074, 4601, 4602, 4604, 4709, 4710, 4714, INT 74, 601, 602, 604, 709, 710, 714
356	Aus 807
357	Aus 610
358	Aus 200
359	Aus 318
360	Aus 336
361	Aus 117
362	Aus 730
363	Aus 754
364	Aus 485, 778
365	Aus 801
366	Aus 155
367	Aus 143, 155, 157
368(T)	Aus 200
369(T)	Aus 4, 301
370(T)	Aus 828
371(T)	Aus 249, 250, 823, 824
372(T)	Aus 252, 253
373(T)	Aus 309, 316
374(T)	Aus 14
375(T)	Aus 309, 314, 315, 316, 319
376(T)	Aus 309, 315, 316, 318
377(T)	Aus 312
378(T)	Aus 328
379(T)	Aus 65, 742
380(P)	Aus 40, 732, 733
381(T)	Aus 4708, 4709, 4710, INT 708, 709, 710
382(T)	Aus 73
383(T)	Aus 57, 327, 742
384(T)	Aus 119, 762, 763, 4709, INT 709
385(T)	Aus 744, 745
386(T)	Aus 327, 4722, 4723, INT 722, 723
387(T)	Aus 65, 742
388(T)	Aus 742
389(T)	Aus 328
390(T)	Aus 328, 329
391(T)	Aus 328, 329, 744
392(T)	Aus 64, 743
393(T)	Aus 742, 743
394(T)	Aus 742, 743
395(T)	Aus 742, 743
396(T)	Aus 55, 326, 4722, 4723, INT 722, 723
397(T)	Aus 64, 743, 744
398(T)	Aus 120, 341, 342
399(T)	Aus 347
400(T)	Aus 778
401(T)	Aus 143
402(T)	Aus 143, 157
403(T)	Aus 155, 157, 4060, INT 60
404(T)	Aus 357, 487
405(T)	Aus 164
406(T)	Aus 171
407(T)	SLB 201, 304
408(T)	SLB 101

## NUMERICAL INDEX OF CHARTS AFFECTED

### Edition No 9

Aus Chart	Notices
Aus 4	369(T)
Aus 14	374(T)
Aus 40	380(P)
Aus 55	396(T)
Aus 57	383(T)
Aus 64	392(T), 397(T)
Aus 65	379(T), 387(T)
Aus 73	382(T)
Aus 117	361
Aus 119	384(T)
Aus 120	398(T)
Aus 143	367, 401(T), 402(T)
Aus 155	366, 367, 403(T)
Aus 157	367, 402(T), 403(T)
Aus 164	405(T)
Aus 171	406(T)
Aus 200	358, 368(T)
Aus 249	371(T)
Aus 250	371(T)
Aus 252	372(T)
Aus 253	372(T)
Aus 256	354
Aus 301	369(T)
Aus 309	373(T), 375(T), 376(T)
Aus 312	377(T)
Aus 314	375(T)
Aus 315	375(T), 376(T)
Aus 316	373(T), 375(T), 376(T)
Aus 318	359, 376(T)
Aus 319	375(T)
Aus 326	396(T)
Aus 327	383(T), 386(T)
Aus 328	378(T), 389(T), 390(T), 391(T)
Aus 329	390(T), 391(T)
Aus 336	360
Aus 341	398(T)
Aus 342	398(T)
Aus 347	399(T)
Aus 357	404(T)
Aus 377	354
Aus 485	364
Aus 487	404(T)
Aus 610	357
Aus 730	362
Aus 732	380(P)
Aus 733	380(P)
Aus 742	379(T), 383(T), 387(T), 388(T), 393(T), 394(T), 395(T)
Aus 743	392(T), 393(T), 394(T), 395(T), 397(T)
Aus 744	385(T), 391(T), 397(T)
Aus 745	385(T)
Aus 754	363
Aus 762	384(T)
Aus 763	384(T)
Aus 778	364, 400(T)

Aus Chart	Notices
Aus 801	365
Aus 807	356
Aus 817	354
Aus 818	354
Aus 823	371(T)
Aus 824	371(T)
Aus 826	355
Aus 828	370(T)
Aus 4060	403(T)
Aus 4074	355
Aus 4601	355
Aus 4602	355
Aus 4604	355
Aus 4708	381(T)
Aus 4709	355, 381(T), 384(T)
Aus 4710	355, 381(T)
Aus 4714	355
Aus 4722	386(T), 396(T)
Aus 4723	386(T), 396(T)
SLB 101	408(T)
SLB 201	407(T)
SLB 304	407(T)

INT Chart	Notices
INT 60	403(T)
INT 74	355
INT 601	355
INT 602	355
INT 604	355
INT 708	381(T)
INT 709	355, 381(T), 384(T)
INT 710	355, 381(T)
INT 714	355
INT 722	386(T), 396(T)
INT 723	386(T), 396(T)

**354 AUSTRALIA - Products - New Charts, New Editions, Withdrawn Charts**

Australian Hydrographic Office

**New Charts**

<i>Chart</i>	<i>Title and Geographical limits</i>	<i>Scale</i>	<i>Publication Date</i>	<i>Remarks</i>
NIL				

**New Electronic Navigation Chart (Aus ENC)**

<i>Cell Name</i>	<i>Title</i>	<i>Publication Date</i>	<i>Remarks</i>
NIL			

**New Editions and Withdrawn Charts**

<i>Chart</i>	<i>Title</i>	<i>Scale</i>	<i>Publication Date</i>	<i>Remarks</i>
Aus 256 <b>(Edition 5)</b>	Australia - East Coast - Queensland - Cleveland Bay and Approaches	1:50 000	1/5/2026	New edition with general updating throughout; including latest bathymetric data. <b>Chart Aus 256 Edition 4 dated 24 January 2025 is now superseded and must be withdrawn from use.</b>
Aus 377 <b>(Edition 3)</b>	Australia - Papua New Guinea - Bligh Entrance to Eastern Fields	1:300 000	1/5/2026	New edition with chart rescheme and general updating throughout; including latest bathymetric data. <b>Chart Aus 377 Edition 2 dated 23 June 2006 is now superseded and must be withdrawn from use.</b>
Aus 817 <b>(Edition 4)</b>	Australia - East Coast - Queensland - Great Sandy Strait and Hervey Bay	1:150 000	1/5/2026	New edition with general updating throughout; including latest bathymetric data. <b>Chart Aus 817 Edition 3 dated 20 August 2021 is now superseded and must be withdrawn from use.</b>
Aus 818 <b>(Edition 4)</b>	Australia - East Coast - Queensland - Sandy Cape to Bustard Head	1:150 000	1/5/2026	New edition with general updating throughout; including latest bathymetric data. <b>Chart Aus 818 Edition 3 dated 1 August 2014 is now superseded and must be withdrawn from use.</b>

**Chart permanently withdrawn**

Charts listed above as withdrawn no longer meet chart carriage requirements and should be marked as "superseded" and replaced with the new chart/ new edition listed prior to passage through the area covered by the new chart.

When placing orders with a chart agent between notice of forthcoming edition and its publication, mariners should advise whether their order pertains to the current edition or the new edition.

For further details refer to the AHO website at [www.hydro.gov.au](http://www.hydro.gov.au) for new edition and new chart stock arrival information.

**355 AUSTRALIA - Products - New Charts and New Editions to be published shortly**

Australian Hydrographic Office

**New Charts to be published shortly**

<i>Chart</i>	<i>Title</i>	<i>Scale</i>	<i>Remarks</i>
NIL			

**New Editions to be published shortly**

<i>Chart</i>	<i>Title</i>	<i>Scale</i>	<i>Remarks</i>
Aus 826	Australia - East Coast - Queensland - Bowen to Cape Bowling Green	1:150 000	New edition with general updating throughout; including latest bathymetric data.
Aus 4074 (INT 74)	Southern Ocean - Cape Darnley to Tasmania	1:10 000 000	New edition with general updating throughout; including updates to magnetic variations.
Aus 4601 (INT 601)	South Pacific Ocean - Tasman Sea - New Zealand to South East Australia	1:3 500 000	New edition with general updating throughout; including updates to magnetic variations.
Aus 4602 (INT 602)	South Pacific Ocean - Tasman and Coral Seas - Australia to Northern New Zealand and Fiji	1:3 500 000	New edition with general updating throughout; including updates to magnetic variations.
Aus 4604 (INT 604)	South Pacific Ocean - Coral and Solomon Seas and Adjacent Seas	1:3 500 000	New edition with general updating throughout; including updates to magnetic variations.
Aus 4709 (INT 709)	Southern Ocean - Australia - South Coast	1:3 500 000	New edition with general updating throughout; including updates to magnetic variations.
Aus 4710 (INT 710)	Indian Ocean - Cape Leeuwin to Southeast Indian Ridge	1:3 500 000	New edition with general updating throughout; including updates to magnetic variations.
Aus 4714 (INT 714)	Indian Ocean - Cocos (Keeling) Islands to Ile Saint Paul	1:3 500 000	New edition with general updating throughout; including updates to magnetic variations.

**356 AUSTRALIA - NEW SOUTH WALES - Jervis Bay - Depths; anchoring prohibited limit; firing practice area**

UKHO

**Aus 807 [181/2026]**

Insert	<a href="#">accompanying block A</a>	35° 06'.0 S	150° 42'.0 E
	<a href="#">accompanying block B</a>	35° 06'.0 S	150° 58'.0 E
	<a href="#">accompanying ZOC diagram</a>	35° 18'.8 S	150° 15'.1 E

**357 AUSTRALIA - TASMAN SEA - Lord Howe Island - The Lagoon - Mooring buoy**

Transport for NSW

**Aus 610 (Lord Howe Island) [473/2025]**

Insert	blue pillar mooring buoy	31° 31'.667 S	159° 03'.809 E
--------	--------------------------	---------------	----------------

**Aus 610 (The Lagoon (North)) [473/2025]**

Insert	blue pillar mooring buoy	31° 31'.667 S	159° 03'.809 E
--------	--------------------------	---------------	----------------

**358 AUSTRALIA - NEW SOUTH WALES - Sydney Harbour - North Head - Wreck;historic wreck**

Port Authority of New South Wales

**Aus 200 [86/2026]**

Insert	depth, 45m, enclosed by danger circle with legend, <i>Wk</i>	33° 49'.265 S	151° 19'.107 E
	depth, 44m, enclosed by danger circle with magenta legend, <i>Historic Wk</i> (see Note)	33° 49'.345 S	151° 18'.818 E

**359 AUSTRALIA - WESTERN AUSTRALIA - Cambridge Gulf - King Shoals - Contours**

Australian Hydrographic Office

**Aus 318 [323/2026]**

Insert	<a href="#">accompanying block</a>	14° 35'.0 S	128° 08'.0 E
--------	------------------------------------	-------------	--------------

**360 AUSTRALIA - WESTERN AUSTRALIA - Cliffy Head - West Cape Howe - Depths**

Australian Hydrographic Office

**Aus 336 [236/2026]**

Insert	<a href="#">accompanying ZOC diagram</a>	34° 21'.78 S	116° 45'.20 E
	<a href="#">accompanying block A</a>	35° 04'.52 S	116° 46'.33 E
	<a href="#">accompanying block B</a>	35° 04'.82 S	117° 23'.36 E

**361 AUSTRALIA - WESTERN AUSTRALIA - Garden Island - Beacon Head - Scientific instrument  
northeastwards**

Fremantle Ports Notice 1/2026

**Aus 117 [1070/2025]**

Insert	special conical light buoy, <i>Fl. Y.2·5s</i> , without topmark	32° 08'.488 S	115° 41'.372 E
--------	---	---------------	----------------

Delete	depth, 19m	32° 08'.49 S	115° 41'.36 E
--------	------------	--------------	---------------

**362 AUSTRALIA - WESTERN AUSTRALIA - Greville Island - Depth**

Australian Hydrographic Office

**Aus 730 [13/2025]**

Insert	depth, 24 <sub>8</sub> m, enclosed by contour	15° 18'.87 S	124° 52'.58 E
--------	---	--------------	---------------

**363 AUSTRALIA - WESTERN AUSTRALIA - Marmion Reef - Depths**

Department of Transport WA

**Aus 754 [273/2026]**

Insert	depth, 3 <sub>7</sub> m, enclosed by contour	31° 50'.59 S	115° 44'.64 E
--------	--	--------------	---------------

Replace	depth, 3 <sub>3</sub> m, with depth, 2 <sub>5</sub> m	31° 49'.8 S	115° 43'.0 E
---------	---	-------------	--------------

**364 AUSTRALIA - SOUTH AUSTRALIA - Spencer Gulf - Plank Shoal - Light buoy; AIS**

Australian Maritime Safety Authority Preliminary ATH 4/2026

**Aus 485 [199/2026]**

Insert magenta circle with legend, AIS, centred on 33° 29'.88 S 137° 28'.56 E

Replace light beacon with port lateral pillar light buoy, *Fl.R.7M*, with topmark 33° 29'.9 S 137° 28'.6 E**Aus 778 [545/2025]**

Insert magenta circle with legend, AIS, centred on 33° 29'.88 S 137° 28'.56 E

Replace light beacon with port lateral pillar light buoy, *Fl.R.5s 7M*, with topmark 33° 29'.9 S 137° 28'.6 E**365 AUSTRALIA - VICTORIA - Anderson Inlet - Light**

Gippsland Ports Notice 222/2026

**Aus 801 [546/2025]**Amend light to *Fl.15s 18m 10M* 38° 38'.4 S 145° 43'.0 E**366 AUSTRALIA - VICTORIA - Port Phillip - Sandringham - Infrastructure, coastline**

Parks Victoria Notice 632/2025

**Aus 155 [280/2026]**Insert [accompanying block](#) 37° 56'.39 S 144° 59'.46 E**367 AUSTRALIA - VICTORIA - Port Phillip - Light buoys**

Ports Victoria Notice 231/2026, 240/2026

**Aus 143 [328/2026]**

Delete light buoy 38° 02'.4 S 144° 47'.5 E

light buoy 38° 02'.6 S 144° 49'.6 E

light buoy 38° 03'.4 S 144° 47'.7 E

**Aus 155 [366/2026]**

Delete light buoy 38° 02'.37 S 144° 47'.47 E

light buoy 38° 02'.63 S 144° 49'.55 E

**Aus 157 [99/2026]**

Delete light buoy 38° 02'.37 S 144° 47'.47 E

light buoy 38° 03'.38 S 144° 47'.70 E

**368(T)/2026 AUSTRALIA - NEW SOUTH WALES - Port Jackson - Chowder Bay - Scientific instruments recovered**  
*Former Notice - 61(T)/2022 is cancelled*  
 Department of Defence

Cancel this notice on receipt.

**Chart formerly affected - Aus 200**

**369(T)/2026 AUSTRALIA - QUEENSLAND - False Pera Head to Boyd Point - Scientific instruments**  
 Maritime Safety Queensland Notice 214(T)/2026

Special light buoys, *Fl. Y. 2s*, exist in the following positions:

12° 53'.15 S 141° 39'.86 E  
 12° 54'.50 S 141° 37'.78 E  
 12° 56'.86 S 141° 35'.97 E  
 12° 57'.46 S 141° 34'.69 E  
 13° 00'.16 S 141° 34'.55 E  
 13° 05'.64 S 141° 36'.00 E.

Mariners are advised to navigate with caution in the area.

**Chart temporarily affected - Aus 4 - Aus 301**

**370(T)/2026 AUSTRALIA - QUEENSLAND - Hinchinbrook Channel - Cardwell - Wreck**  
 Maritime Safety Queensland Notice 216(T)/2026

A stranded wreck marked by a special light buoy, *Fl. Y. 4s*, exists in position 18° 11'.95 S 146° 01'.08 E.

Mariners are advised to navigate with caution in the area.

**Chart temporarily affected - Aus 828**

**371(T)/2026 AUSTRALIA - QUEENSLAND - Mackay - Slade Rock - Light buoy off station**  
 Maritime Safety Queensland Notice 210(T)/2026

The isolated danger light buoy, *Fl(2)6s* (21° 05'.15 S 149° 14'.36 E), is off station.

**Chart temporarily affected - Aus 249 - Aus 250 - Aus 823 - Aus 824**

**372(T)/2026 AUSTRALIA - QUEENSLAND - Shute Harbour - Rooper Inlet - Obstruction**  
 Maritime Safety Queensland Notice 152(T)/2026

A semi-submerged mooring buoy exists in position 20° 18'.01 S 148° 47'.23 E.

**Chart temporarily affected - Aus 252 - Aus 253**

**373(T)/2026 AUSTRALIA - NORTHERN TERRITORY - Beagle Gulf - USV operations**  
 Northern Territory Government Notice 13(T)/2026

An Uncrewed Surface Vessel (USV) will be operating at speeds of up to 40kts in an area bounded by the following positions:

12° 21'.22 S 130° 24'.00 E  
 12° 21'.22 S 130° 35'.25 E  
 12° 18'.22 S 130° 35'.25 E  
 12° 18'.22 S 130° 24'.00 E.

A support vessel and onshore operators will be monitoring VHF Ch 10 and Ch 16.

Any vessel approaching the USV will be contacted and requested to change course if there is a risk of collision.

Mariners are advised to navigate with caution in the area.

**Chart temporarily affected - Aus 309 - Aus 316**

**374(T)/2026 AUSTRALIA - NORTHERN TERRITORY - Groote Eylandt - Milner Bay - Scientific instrument**  
Northern Territory Government Notice 12(T)/2026

A special light buoy, *Fl.Y.2-5s*, exists in position 13° 51'.72 S 136° 24'.66 E.

**Chart temporarily affected - Aus 14**

**375(T)/2026 AUSTRALIA - NORTHERN TERRITORY - WESTERN AUSTRALIA - Darwin to Eugene McDermont Shoal - Geotechnical and geophysical operations completed westwards**

*Former Notice - 1036(T)/2025 is cancelled*  
INPEX

Cancel this notice on receipt.

**Chart formerly affected - Aus 309 - Aus 314 - Aus 315 - Aus 316 - Aus 319**

**376(T)/2026 AUSTRALIA - TIMOR SEA - Flat Top Bank - Survey operations completed southwards**

*Former Notice - 206(T)/2026 is cancelled*  
Cyan Renewables, Australian Maritime Safety Authority Auscoast Warning 168/2026

Cancel this notice on receipt.

**Chart formerly affected - Aus 309 - Aus 315 - Aus 316 - Aus 318**

**377(T)/2026 AUSTRALIA - TIMOR SEA - Sahul Banks - Subsea operations completed**

*Former Notice - 1077(T)/2025 is cancelled*  
DOF Management

Cancel this notice on receipt.

**Chart formerly affected - Aus 312**

**378(T)/2026 AUSTRALIA - WESTERN AUSTRALIA - Barrow Island - Subsea operations northwestwards**

DOF Management

On or about 6 May 2026, vessel *Skandi Hercules* and an ROV will begin conducting subsea operations in the vicinity of position 19° 52'.73 S 114° 36'.48 E.

Mariners are advised to navigate with caution in the area. 5M clearance requested.

**Chart temporarily affected - Aus 328**

**379(T)/2026 AUSTRALIA - WESTERN AUSTRALIA - Barrow Island - Nav aids unreliable**

Department of Transport and Major Infrastructure WA Notice 6802/2026

Nav aids in the Port of Barrow Island may be unreliable due to damage sustained during Tropical Cyclone Narelle.

Mariners are advised to navigate with caution in the area.

**Chart temporarily affected - Aus 65 - Aus 742**

**380(P)/2026 AUSTRALIA - WESTERN AUSTRALIA - Buccaneer Archipelago - Mulgudna Island to Talbot Bay - Shoaling**

Reach Subsea

Latest survey indicates shoaler depths than those charted exist in an area bounded by the following positions:

16° 08'.17 S 123° 47'.55 E  
 16° 02'.69 S 123° 59'.17 E  
 16° 02'.99 S 124° 21'.22 E  
 16° 09'.95 S 124° 20'.73 E  
 16° 13'.22 S 123° 53'.40 E  
 16° 22'.75 S 123° 58'.36 E  
 16° 16'.72 S 123° 48'.86 E.

Mariners are advised to navigate with caution in the area.

**Chart which will be affected - Aus 40 - Aus 732 - Aus 733**

**381(T)/2026 AUSTRALIA - WESTERN AUSTRALIA - Cape Naturaliste - Cable laying operations completed**

*Former Notice - 255(T)/2026 is cancelled*

Gulf Agency Company (Australia)

Cancel this notice on receipt.

**Chart formerly affected - Aus 4708 (INT 708) - Aus 4709 (INT 709) - Aus 4710 (INT 710)**

**382(T)/2026 AUSTRALIA - WESTERN AUSTRALIA - Carnarvon - Teggs Channel - Light buoy off station**

Department of Transport and Major Infrastructure WA Notice 6822/2026

The starboard lateral light buoy, *Fl.G.3s No5* (24° 54'.43 S 113° 38'.12 E), is off station.

**Chart temporarily affected - Aus 73**

**383(T)/2026 AUSTRALIA - WESTERN AUSTRALIA - Enderby Island - Fish aggregating device off station northwestwards**

NSW Department of Primary Industries and Regional Development

The special light buoy, *Fl.Y.5s FAD (Apr-Nov)* (20° 30'.05 S 116° 17'.64 E), is off station.

**Chart temporarily affected - Aus 57 - Aus 327 - Aus 742**

**384(T)/2026 AUSTRALIA - WESTERN AUSTRALIA - Esperance Bay to Eastern Group - Survey operations completed**

*Former Notice - 263(T)/2025 is cancelled*

Revelare Hydrospatial

Cancel this notice on receipt.

**Chart formerly affected - Aus 119 - Aus 762 - Aus 763 - Aus 4709 (INT 709)**

**385(T)/2026 AUSTRALIA - WESTERN AUSTRALIA - Exmouth - Light beacon unlit**

Department of Transport and Major Infrastructure WA Notice 6817/2026

The starboard lateral light beacon, *Fl.G.3s* (21° 57'.55 S 114° 08'.79 E), is unlit.

Mariners are advised to navigate with caution in the area.

**Chart temporarily affected - Aus 744 - Aus 745**

**386(T)/2026 AUSTRALIA - WESTERN AUSTRALIA - Glomar Shoal - Subsea operations northwards**

Santos , Vantris Energy Australia

On or about 12 May 2026, vessel *VE Constructor* and an ROV will begin conducting subsea operations associated with the decommissioning of the Mutineer, Exeter, Finucane and Fletcher fields in an area bounded by the following positions:

19° 19'.92 S 116° 30'.08 E

19° 19'.92 S 116° 50'.08 E

19° 09'.92 S 116° 50'.08 E

19° 09'.92 S 116° 30'.08 E.

Mariners are advised to navigate with caution in the area. 500m clearance requested.

**Chart temporarily affected - Aus 327 - Aus 4722 (INT 722) - Aus 4723 (INT 723)**

**387(T)/2026 AUSTRALIA - WESTERN AUSTRALIA - Lowendal Islands - Light unlit**

Former Notice - 900(T)/2023 is cancelled

Santos

The light, *Fl.3s* (20° 38'.04 S 115° 34'.34 E), is unlit.

**Chart temporarily affected - Aus 65 - Aus 742**

**388(T)/2026 AUSTRALIA - WESTERN AUSTRALIA - Lowendal Islands - Varanus Island - Scientific instrument recovered northeastwards**

Former Notice - 29(T)/2026 is cancelled

Fugro

Cancel this notice on receipt.

**Chart formerly affected - Aus 742**

**389(T)/2026 AUSTRALIA - WESTERN AUSTRALIA - Montebello Islands - Well plug and abandonment works northwestwards**

Woodside Energy Ltd

On or about 13 May 2026, drill rig *Transocean Endurance* and support vessels will begin conducting well plug and abandonment works in the vicinity of the following positions:

20° 06'.39 S 115° 05'.13 E

20° 03'.27 S 115° 10'.42 E

20° 00'.30 S 115° 11'.08 E.

Mariners are advised to navigate with caution in the area. 500m clearance requested.

**Chart temporarily affected - Aus 328**

**390(T)/2026 AUSTRALIA - WESTERN AUSTRALIA - Muiron Islands - Subsea operations completed northwestwards**

Former Notice - 1044(T)/2025 is cancelled

Woodside Energy Ltd

Cancel this notice on receipt.

**Chart formerly affected - Aus 328 - Aus 329**

**391(T)/2026 AUSTRALIA - WESTERN AUSTRALIA - Muiron Islands - Survey operations northwestwards**  
Reach Subsea

On or about 6 May 2026, vessel *Offshore Surveyor*, with 700m towed array, will begin geophysical survey operations in the vicinity of the following positions:

21° 30'.38 S 113° 57'.32 E  
21° 30'.47 S 114° 01'.60 E  
21° 27'.23 S 113° 57'.40 E.

Mariners are advised to navigate with caution in the area. 700m clearance requested.

**Chart temporarily affected - Aus 328 - Aus 329 - Aus 744**

**392(T)/2026 AUSTRALIA - WESTERN AUSTRALIA - Onslow - Beadon Bay - Light buoy off station; light buoys established**

Department of Transport and Major Infrastructure WA Notice 6801/2026

The starboard lateral light buoy, *Is.G.2s* (21° 38'.17 S 115° 07'.97 E), is off station.

Special light buoys, *Fl.Y.2s*, exist in positions 21° 38'.12 S 115° 07'.95 E and 21° 38'.30 S 115° 07'.98 E.

Mariners are advised to navigate with caution in the area.

**Chart temporarily affected - Aus 64 - Aus 743**

**393(T)/2026 AUSTRALIA - WESTERN AUSTRALIA - Passage Islands - Dredging**

Pilbara Ports Authority Notice CPW01/2026

Dredging operations have commenced at the Port of Cape Preston West for the transshipment channel to the BCI minerals Mardie Salt and Potash jetty in the vicinity of 21° 01'.48 S 115° 56'.40 E. Dredge materials will be disposed in the vicinity of 20° 50'.54 S 115° 51'.20 E.

Mariners should navigate with caution.

**Chart temporarily affected - Aus 742 - Aus 743**

**394(T)/2026 AUSTRALIA - WESTERN AUSTRALIA - Passage Islands - Scientific instruments**

Department of Transport and Major Infrastructure WA Notice 6807/2026

Special light buoys, *Fl.Y.4s*, exist in the following positions:

20° 49'.62 S 115° 51'.31 E  
20° 49'.86 S 115° 52'.72 E  
20° 50'.34 S 115° 50'.32 E  
20° 50'.39 S 115° 51'.44 E  
20° 50'.57 S 115° 50'.67 E  
20° 50'.89 S 115° 50'.00 E  
20° 51'.07 S 115° 48'.72 E  
20° 51'.45 S 115° 49'.94 E  
20° 58'.14 S 115° 58'.94 E.

Mariners are advised to navigate with caution in the area.

**Chart temporarily affected - Aus 742 - Aus 743**

**395(T)/2026 AUSTRALIA - WESTERN AUSTRALIA - Passage Islands - Scientific instruments**

*Former Notice - 346(T)/2026 is cancelled*

Department of Transport and Major Infrastructure WA Notice 6807/2026

Cancel this notice on receipt.

**Chart formerly affected - Aus 742 - Aus 743**

**396(T)/2026 AUSTRALIA - WESTERN AUSTRALIA - Port Walcott - Outer North Channel - Light buoy off station**  
 Australian Maritime Safety Authority Auscoast Warning 113/2026

The east cardinal light buoy, *Q(3)10s C1* (20° 23'.22 S 117° 25'.60 E), is off station.

**Chart temporarily affected - Aus 55 - Aus 326 - Aus 4722 (INT 722) - Aus 4723 (INT 723)**

**397(T)/2026 AUSTRALIA - WESTERN AUSTRALIA - Port of Ashburton - Light beacons unlit; topmarks destroyed**  
 Pilbara Ports Authority Notice A9/2026

The light beacon, *Fl.R.3s R06* (21° 36'.12 S 115° 01'.72 E), and the isolated danger light buoy, *Fl(2)6s 8M* (21° 33'.91 S 114° 57'.70 E), are unlit.

The topmark on light beacons, *Fl.G.3s G02* (21° 32'.19 S 115° 02'.60 E) and *Fl.R.3s R04* (21° 34'.18 S 115° 02'.23 E), have been destroyed.

Mariners are advised to navigate with caution in the area.

**Chart temporarily affected - Aus 64 - Aus 743 - Aus 744**

**398(T)/2026 AUSTRALIA - SOUTH AUSTRALIA - Great Australian Bight - Satellite re-entry**  
 Southern Launch

Southern Launch will be conducting re-entry activities during the period 0400-0640 UTC 16-30 May 2026.

Satellite components may impact the waters within an area bounded by the following positions:

33° 15'.91 S 133° 00'.70 E  
 33° 08'.17 S 133° 54'.05 E  
 31° 47'.60 S 133° 28'.93 E  
 31° 56'.33 S 132° 33'.82 E.

Mariners are advised to be aware of floating debris hazards and to navigate with caution.

**Chart temporarily affected - Aus 120 - Aus 341 - Aus 342**

**399(T)/2026 AUSTRALIA - SOUTH AUSTRALIA - Margaret Brock Reef - Light unlit**  
 Department for Infrastructure and Transport SA Notice 30(T)/2026

The light, *Fl.5s 8M* (36° 57'.11 S 139° 35'.71 E), is unlit; a temporary light, *Fl.R.5s 2M*, exists in situ.

Mariners are advised to navigate with caution in the area.

**Chart temporarily affected - Aus 347**

**400(T)/2026 AUSTRALIA - SOUTH AUSTRALIA - Spencer Gulf - Yarraville Shoals - Geotechnical operations completed westwards**

*Former Notice - 262(T)/2026 is cancelled*  
 Department for Infrastructure and Transport SA

Cancel this notice on receipt.

**Chart formerly affected - Aus 778**

**401(T)/2026 AUSTRALIA - VICTORIA - Port Phillip - Mud Islands - Light buoy restored northeastwards**

*Former Notice - 175(T)/2026 is cancelled*  
 Parks Victoria Notice 217/2026

Cancel this notice on receipt.

**Chart formerly affected - Aus 143**

**402(T)/2026 AUSTRALIA - VICTORIA - Port Phillip - Wedge Spit - Scientific instrument**  
Parks Victoria Notice 227(T)/2026

A special light buoy, *Fl.Y.4s*, exists in position 38° 02'.84 S 144° 38'.73 E.

**Chart temporarily affected - Aus 143 - Aus 157**

**403(T)/2026 AUSTRALIA - VICTORIA - Port Phillip - Scientific instruments southwards**  
Ports Victoria Notice 241(T)/2026

Subsurface scientific instruments, 1m above the seabed, exist in the following positions:  
38° 00'.00 S 144° 54'.61 E  
38° 02'.66 S 144° 47'.36 E.

Mariners are advised to navigate with caution in the area.

**Chart temporarily affected - Aus 155 - Aus 157 - Aus 4060 (INT 60)**

**404(T)/2026 AUSTRALIA - BASS STRAIT - Hogan Group - Scientific instrument recovered**  
*Former Notice - 158(T)/2025 is cancelled*  
Orsted

Cancel this notice on receipt.

**Chart formerly affected - Aus 357 - Aus 487**

**405(T)/2026 AUSTRALIA - TASMANIA - Moorland Point to Claytons Bay - Scientific instruments northwards**  
*Former Notice - 1010(T)/2025 is cancelled*  
Marine and Safety Tasmania Notice M168(T)/2026

Special light buoys, *Q.Y.*, exist in the following positions:  
41° 06'.54 S 146° 26'.29 E  
41° 09'.11 S 146° 13'.67 E  
41° 09'.69 S 146° 23'.66 E  
41° 09'.83 S 146° 22'.64 E.

Mariners are not permitted to moor to the light buoys and are advised to navigate with caution in the area.

**Chart temporarily affected - Aus 164**

**406(T)/2026 AUSTRALIA - TASMANIA - River Derwent - Punched Reef - Light buoy relit**  
*Former Notice - 312(T)/2026 is cancelled*  
Marine and Safety Tasmania Notice M144(T)/2026

Cancel this notice on receipt.

**Chart formerly affected - Aus 171**

**407(T)/2026 SOLOMON ISLANDS - Florida Islands - Nggela Sule - Tuituhi Point - Light beacon relit**  
*Former Notice - 133(T)/2026 is cancelled*  
Solomon Islands Maritime Authority

Cancel this notice on receipt.

**Chart formerly affected - SLB 201 - SLB 304**

**408(T)/2026 SOLOMON ISLANDS - Honiara - Light unlit**  
Solomon Islands Maritime Authority Notice 7/2026

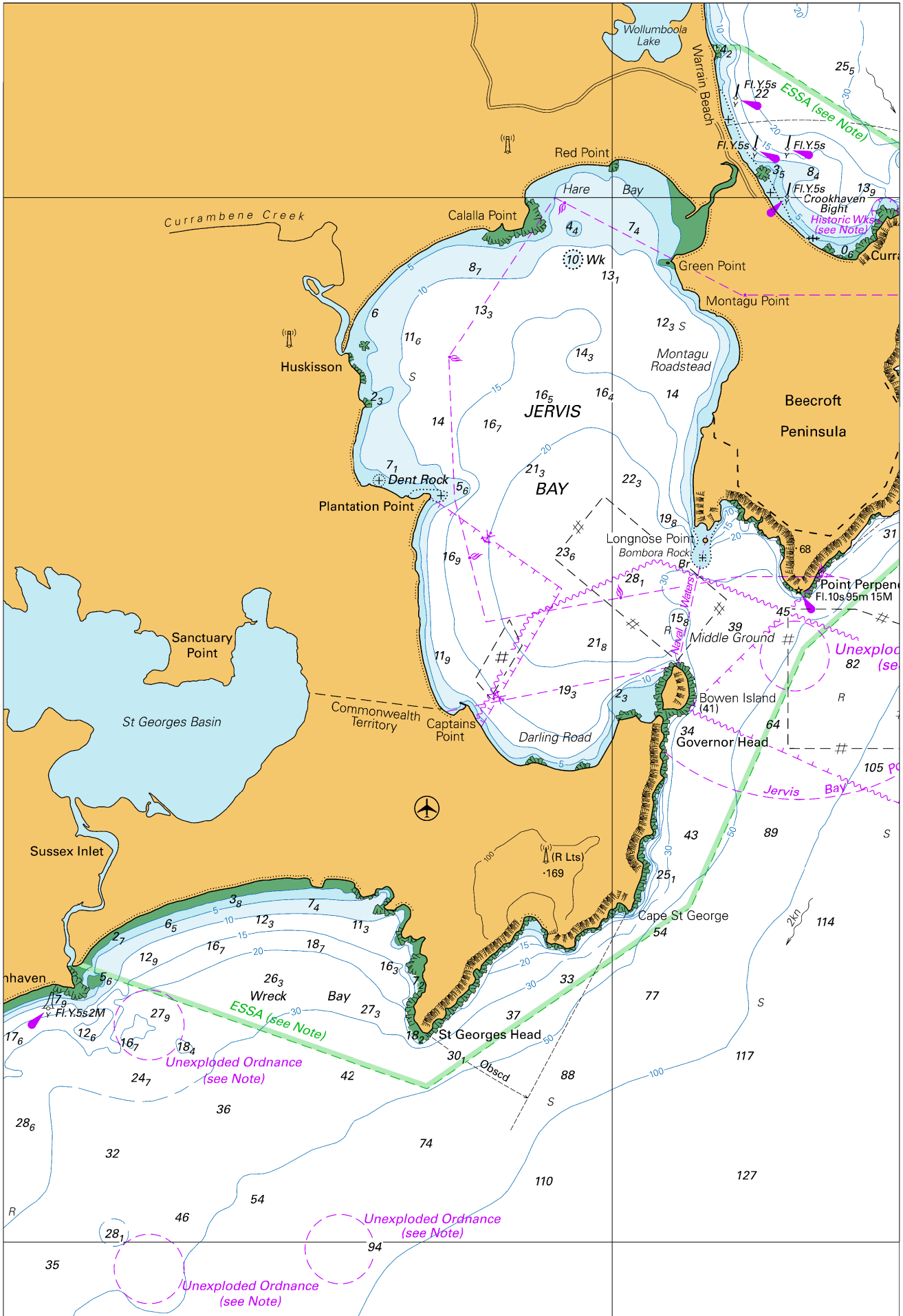
The leading light, *Fl.G.5s 6M* (9° 25'.81 S 159° 57'.31 E), is unlit;

**Chart temporarily affected - SLB 101**

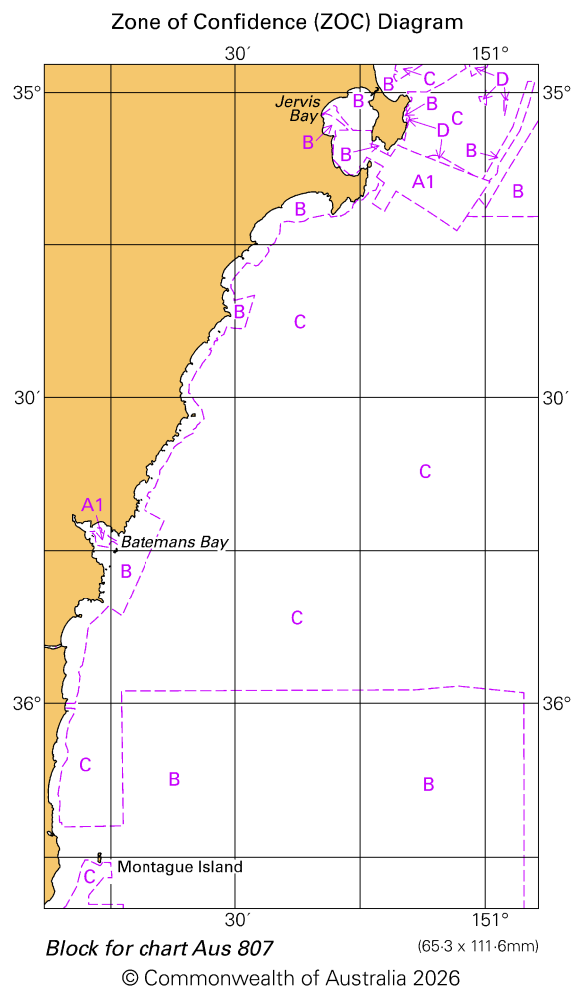
II

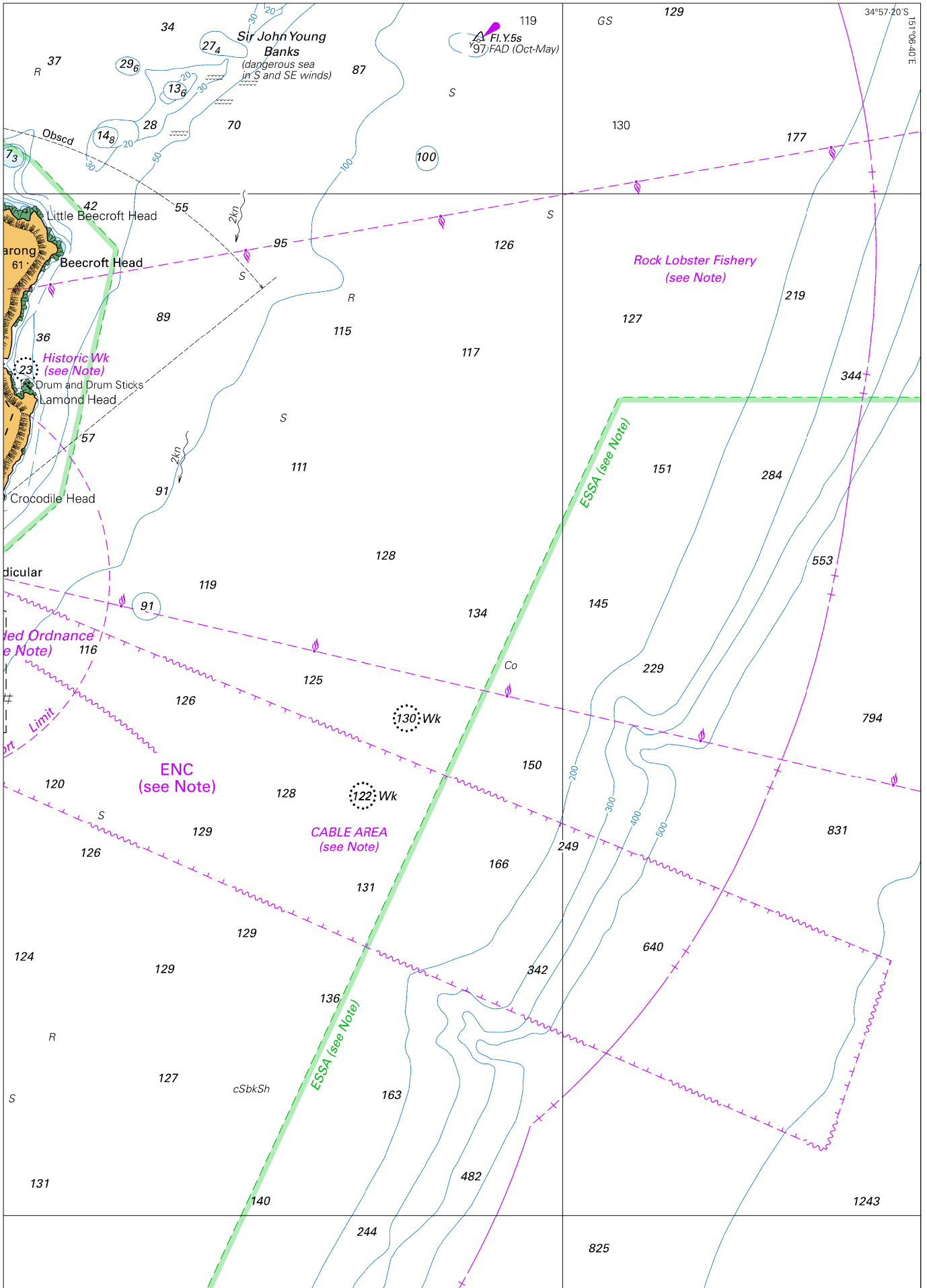
**HYDROGRAPHIC REPORTS**

NIL



To accompany Australian Notice to Mariners 356/2026

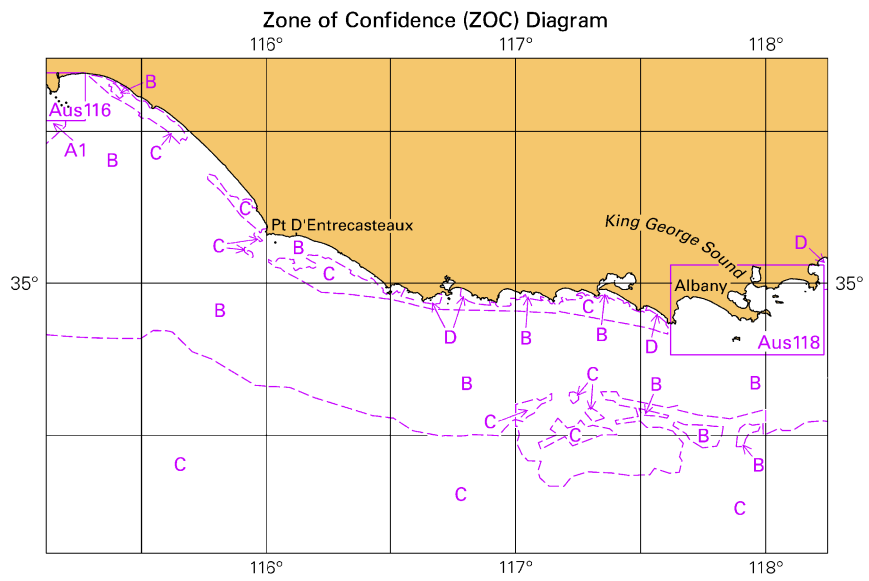








To accompany Australian Notice to Mariners 360/2026

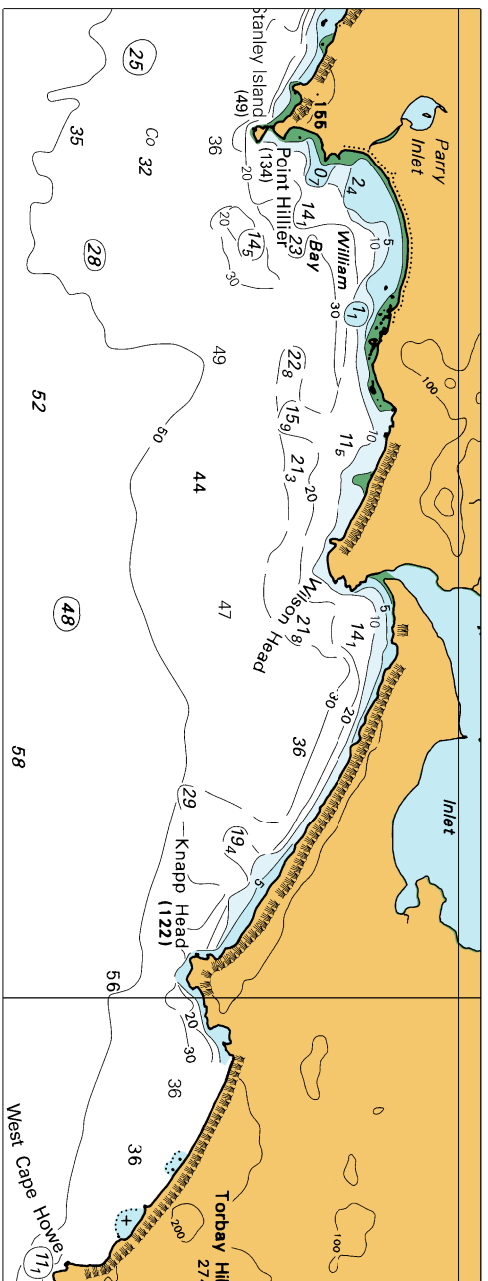


Block for chart Aus 336

© Commonwealth of Australia 2026

(103.3 x 65.3mm)

To accompany Australian Notice to Mariners 360/2026



Block B for chart Aus 336

© Commonwealth of Australia 2026

(158.9 x 63.1mm)

