



AUSTRALIAN NOTICES TO MARINERS

Notices 316 - 353

Published fortnightly by the Australian Hydrographic Office

Australian Notices to Mariners are the authority for correcting charts and publications published by the Australian Hydrographic Office covering Australia, Papua New Guinea, Solomon Islands, Australian Antarctic Territory and Timor-Leste.

Commodore D.G. MULLINS, RAN
Hydrographer of Australia

SECTIONS.

- I. **Australian Notices to Mariners, including blocks and notes.**
- II. **Hydrographic Reports.**

SUPPLEMENTS.

- I. **Tracings**
 - II. **Cumulative List of Australian Notices to Mariners.**
 - III. **Cumulative List of Temporary and Preliminary Australian Notices to Mariners.**
 - IV. **Temporary and Preliminary Notices in force.**
-
-

© Commonwealth of Australia 2026

This work is copyright. Apart from any use permitted under the Copyright Act 1968, no part may be reproduced by any process, adapted, communicated or commercially exploited without prior written permission from The Commonwealth represented by the Australian Hydrographic Office.

IMPORTANT NOTICE

This edition of Notices to Mariners includes all navigationally significant information affecting AHO products which the AHO has become aware of since the last edition. All reasonable efforts have been made to ensure the accuracy and completeness of the information, including third party information, on which these updates are based. The AHO regards third parties from which it receives information as reliable, however the AHO cannot verify all such information and errors may therefore exist. The AHO does not accept liability for errors in third party information.

GENERAL INSTRUCTIONS

The substance of these notices should be inserted on the charts affected.

Bearings are referred to the true compass and are reckoned clockwise from North; those relating to lights are given as seen by an observer from seaward.

Positions quoted in notices relate to WGS84 which is the horizontal datum for all charts produced by the Australian Hydrographic Office.

The range quoted for a light is its nominal range.

Depths are with reference to the chart datum of each chart. Heights are above mean high water springs or mean higher high water, as appropriate.

The capital letter (P) or (T) after the number of any notice denotes a preliminary or temporary notice respectively, which are contained separately at the end of the permanent notices.

REPORTING OF DANGERS

Mariners are particularly requested to notify the AUSTRALIAN HYDROGRAPHIC OFFICE, Locked Bag 8801 Wollongong, NSW 2500 (e-mail datacentre@hydro.gov.au or, alternatively by filling in and submitting the [Hydrographic Notes](#) forms located on the web site – www.hydro.gov.au), immediately on the discovery of new dangers or suspected dangers to navigation. For changes or defects in aids to navigation notify AusSAR (Fax 02-6230 6868 or email rccaus@amsa.gov.au).

AUTHORISED USE

Copies of Australian notices are available free of charge from the Australian Hydrographic Office (AHO) website (www.hydro.gov.au) and through the eNotices (email) service (www.hydro.gov.au/enotices/enotices.htm).

Individual Notices may be copied for the purpose of inserting Notice substance on official charts and publications. Paper copies may be printed by chart agents and distributed to customers on a cost recovery basis. Participating chart agents are listed on the AHO website as providing a 'Paper Notices to Mariners' service (www.hydro.gov.au/prodserv/agents-list.htm). Copies of the notices may not be sold for profit without prior written agreement.

NUMERICAL INDEX OF NOTICES TO MARINERS

Edition No 8

Notices	Aus Chart, INT Chart, ENC Cell, AHP, BA Pubs
316	Aus 53, 64, 489
317	Aus 256, 377, 817, 818
318	Aus 4602, 4604, INT 602, 604
319	Aus 245
320	Aus 236
321	Aus 399, 4622, INT 622, PNG 397
322	Aus 4060, 4603, 4722, INT 60, 603, 722
323	Aus 318
324	Aus 57
325	Aus 55, 57
326	Aus 116, 755
327	Aus 326
328	Aus 143
329	Aus 151
330(T)	Aus 200, 489, 808, 809
331(T)	Aus 245, 246, 265, 815, 816, 817, 818, 819, 820
332(T)	Aus 245
333(T)	Aus 260, 367, 822
334(T)	Aus 720
335(T)	Aus 25, 309, 314, 315, 316, 319, 322, 4603, 4722, INT 603, 722
336(T)	Aus 65, 327, 328, 742
337(T)	Aus 60
338(T)	Aus 327, 742, 4603, 4708, 4722, 4723, INT 603, 708, 722, 723
339(T)	Aus 327, 742
340(T)	Aus 112, 117, 754
341(T)	Aus 73, 331
342(T)	Aus 318
343(T)	Aus 755
344(T)	Aus 745
345(T)	Aus 328, 329, 744, 4723, INT 723
346(T)	Aus 742, 743
347(T)	Aus 743, 744
348(T)	Aus 314, 319, 322, 400, 608, 920, 4603, 4708, 4722, 4723, INT 603, 708, 722, 723
349(T)	Aus 349, 357, 487, 801, 802
350(T)	Aus 349
351(T)	Aus 349
352(T)	Aus 155
353(T)	Aus 357, 487

NUMERICAL INDEX OF CHARTS AFFECTED

Edition No 8

Aus Chart	Notices
Aus 25	335(T)
Aus 53	316
Aus 55	325
Aus 57	324, 325
Aus 60	337(T)
Aus 64	316
Aus 65	336(T)
Aus 73	341(T)
Aus 112	340(T)
Aus 116	326
Aus 117	340(T)
Aus 143	328
Aus 151	329
Aus 155	352(T)
Aus 200	330(T)
Aus 236	320
Aus 245	319, 331(T), 332(T)
Aus 246	331(T)
Aus 256	317
Aus 260	333(T)
Aus 265	331(T)
Aus 309	335(T)
Aus 314	335(T), 348(T)
Aus 315	335(T)
Aus 316	335(T)
Aus 318	323, 342(T)
Aus 319	335(T), 348(T)
Aus 322	335(T), 348(T)
Aus 326	327
Aus 327	336(T), 338(T), 339(T)
Aus 328	336(T), 345(T)
Aus 329	345(T)
Aus 331	341(T)
Aus 349	349(T), 350(T), 351(T)
Aus 357	349(T), 353(T)
Aus 367	333(T)
Aus 377	317
Aus 399	321
Aus 400	348(T)
Aus 487	349(T), 353(T)
Aus 489	316, 330(T)
Aus 608	348(T)
Aus 720	334(T)
Aus 742	336(T), 338(T), 339(T), 346(T)
Aus 743	346(T), 347(T)
Aus 744	345(T), 347(T)
Aus 745	344(T)
Aus 754	340(T)
Aus 755	326, 343(T)
Aus 801	349(T)
Aus 802	349(T)
Aus 808	330(T)
Aus 809	330(T)
Aus 815	331(T)

Aus Chart	Notices
Aus 816	331(T)
Aus 817	317, 331(T)
Aus 818	317, 331(T)
Aus 819	331(T)
Aus 820	331(T)
Aus 822	333(T)
Aus 920	348(T)
Aus 4060	322
Aus 4602	318
Aus 4603	322, 335(T), 338(T), 348(T)
Aus 4604	318
Aus 4622	321
Aus 4708	338(T), 348(T)
Aus 4722	322, 335(T), 338(T), 348(T)
Aus 4723	338(T), 345(T), 348(T)
PNG 397	321

INT Chart	Notices
INT 60	322
INT 602	318
INT 603	322, 335(T), 338(T), 348(T)
INT 604	318
INT 622	321
INT 708	338(T), 348(T)
INT 722	322, 335(T), 338(T), 348(T)
INT 723	338(T), 345(T), 348(T)

316 AUSTRALIA - Products - New Charts, New Editions, Withdrawn Charts

Australian Hydrographic Office

New Charts

<i>Chart</i>	<i>Title and Geographical limits</i>	<i>Scale</i>	<i>Publication Date</i>	<i>Remarks</i>
NIL				

New Electronic Navigation Chart (Aus ENC)

<i>Cell Name</i>	<i>Title</i>	<i>Publication Date</i>	<i>Remarks</i>
NIL			

New Editions and Withdrawn Charts

<i>Chart</i>	<i>Title</i>	<i>Scale</i>	<i>Publication Date</i>	<i>Remarks</i>
Aus 53 (Edition 10)	Australia - North West Coast - Western Australia - Approaches to Port Hedland Inset: Hunt Point	1:50 000 1:15 000	17/4/2026	New edition with general updating throughout; including new inset. Chart Aus 53 Edition 9 dated 21 February 2025 is now superseded and must be withdrawn from use.
Aus 64 (Edition 3)	Australia - West Coast - Western Australia - Approaches to Port of Ashburton and Onslow	1:50 000	17/4/2026	New edition with general updating throughout; including latest bathymetric data. Chart Aus 64 Edition 2 dated 12 April 2024 is now superseded and must be withdrawn from use.
Aus 489 (Edition 2)	Australia - East Coast - New South Wales - Jervis Bay to Sugarloaf Point	1:500 000	17/4/2026	New edition with general updating throughout; including latest bathymetric data. Chart Aus 489 Edition 1 dated 22 May 2009 is now superseded and must be withdrawn from use.

Chart permanently withdrawn

Charts listed above as withdrawn no longer meet chart carriage requirements and should be marked as "superseded" and replaced with the new chart/ new edition listed prior to passage through the area covered by the new chart.

When placing orders with a chart agent between notice of forthcoming edition and its publication, mariners should advise whether their order pertains to the current edition or the new edition.

For further details refer to the AHO website at www.hydro.gov.au for new edition and new chart stock arrival information.

317 AUSTRALIA - Products - New Charts and New Editions to be published shortly

Australian Hydrographic Office

New Charts to be published shortly

<i>Chart</i>	<i>Title</i>	<i>Scale</i>	<i>Remarks</i>
NIL			

New Editions to be published shortly

<i>Chart</i>	<i>Title</i>	<i>Scale</i>	<i>Remarks</i>
Aus 256	Australia - East Coast - Queensland - Cleveland Bay and Approaches	1:50 000	New edition with general updating throughout; including latest bathymetric data.
Aus 377	Australia - Papua New Guinea - Bligh Entrance to Eastern Fields	1:300 000	New edition with chart rescheme and general updating throughout; including latest bathymetric data.
Aus 817	Australia - East Coast - Queensland - Great Sandy Strait and Hervey Bay	1:150 000	New edition with general updating throughout; including latest bathymetric data.
Aus 818	Australia - East Coast - Queensland - Sandy Cape to Bustard Head	1:150 000	New edition with general updating throughout; including latest bathymetric data.

318 PACIFIC OCEAN - Nouvelle Caledonie - Depths

UKHO

Aus 4602 (INT 602) [183/2026]

Insert	depth, 460m, and extend contour NE to enclose	20° 47'.9 S	170° 26'.1 E
Replace	depth, 695m, with depth, 802m	19° 00'.8 S	150° 26'.7 E

Aus 4604 (INT 604) [7/2026]

Insert	depth, 460m, and extend contour NE to enclose	20° 47'.9 S	170° 26'.1 E
Replace	depth, 695m, with depth, 802m	19° 00'.8 S	150° 26'.7 E

319 AUSTRALIA - QUEENSLAND - Gladstone - Auckland Point Wharves - Infrastructure

Maritime Safety Queensland

Aus 245 [1015/2025]

Insert	accompanying block	23° 50'.12 S	151° 16'.05 E
--------	------------------------------------	--------------	---------------

320 AUSTRALIA - QUEENSLAND - Point Cartwright - Depths

Maritime Safety Queensland Notice 174(T)/2026

Aus 236 [89/2026]

Insert	accompanying block	26° 40'.5 S	153° 08'.8 E
--------	------------------------------------	-------------	--------------

321 PAPUA NEW GUINEA - Bougainville Island - Sipai - Depths southwestwards

UKHO

Aus 399 [146/2022]

Insert depth, 594m 5° 55'.82 S 154° 26'.30 E

Delete depth, 743m 5° 55'.9 S 154° 25'.2 E

Aus 4622 (INT 622) [537/2025]

Insert depth, 594m 5° 55'.8 S 154° 26'.3 E

PNG 397 [103/2022]

Insert depth, 594m 5° 55'.82 S 154° 26'.30 E

Delete depth, 743m 5° 55'.9 S 154° 25'.2 E

322 INDONESIA - Banda Sea - Depths

UKHO

Aus 4060 (INT 60) [198/2026]Insert depth, 286m, enclosed by contour 07° 12'.09 S 125° 51'.50 E
depth, 290m, enclosed by contour 6° 23'.44 S 125° 16'.39 E

Delete depth, 1658m 6° 27'.16 S 125° 02'.97 E

Aus 4603 (INT 603) [233/2026]Insert depth, 592m, and extend danger line N to enclose 4° 01'.1 S 127° 17'.0 E
depth, 290m, and extend contour NE to enclose 6° 23'.4 S 125° 16'.4 E

Replace depth, 863m, with depth, 286m 7° 10'.4 S 125° 50'.3 E

Delete depth, 625 4° 04'.7 S 127° 18'.1 E
depth, 739m 6° 26'.3 S 125° 11'.6 E**Aus 4722 (INT 722) [196/2026]**

Replace depth, 863m, with depth, 286m 7° 10'.4 S 125° 50'.3 E

323 AUSTRALIA - WESTERN AUSTRALIA - Cambridge Gulf - King Shoals - Inner King Shoal - Drying height

Australian Hydrographic Office

Aus 318 [433/2025]Move drying height, Q_3 , and enclosing contour 14° 37'.6 S 128° 08'.8 E
to 14° 37'.51 S 128° 08'.40 E**324 AUSTRALIA - WESTERN AUSTRALIA - Dampier - Rosemary Island - Depths**

Australian Hydrographic Office

Aus 57 [95/2026]Insert [accompanying block](#) 20° 26'.724 S 116° 40'.287 E**325 AUSTRALIA - WESTERN AUSTRALIA - Delambre Island - Depths**

Australian Hydrographic Office

Aus 55 [NE 12/12/2025]Insert depth, 9_sm, enclosed by contour 20° 25'.25 S 117° 01'.39 E**Aus 57 [324/2026]**Insert depth, 9_sm, enclosed by contour 20° 25'.25 S 117° 01'.39 E

326 AUSTRALIA - WESTERN AUSTRALIA - Port Geographe Marina - Depths

Department of Transport WA

Aus 116 (Port Geographe Marina) [277/2026]Insert [accompanying block](#) 33° 37'.83 S 115° 23'.35 E**Aus 755 [277/2026]**Replace depth, 0₅m, with depth, 0₉m 33° 37'.4 S 115° 24'.0 E**327 AUSTRALIA - WESTERN AUSTRALIA - Port Hedland - Depths northwestwards**

Australian Hydrographic Office

Aus 326 [194/2026]Insert [accompanying block](#) 19° 46'.1 S 118° 04'.8 E**328 AUSTRALIA - VICTORIA - Port Phillip - Wreck**

Ports Victoria Notice 213/2026

Aus 143 [280/2026]Insert depth, 17₈m, enclosed by danger circle with legend, *Wk* 38° 04'.73 S 145° 00'.19 E**329 AUSTRALIA - VICTORIA - Western Port - Tea Tree Point - Infrastructure; coastline**

Parks Victoria Notice 141/2026

Aus 151 [240/2026]Insert [accompanying block](#) 38° 23'.0 S 145° 16'.3 E

330(T)/2026 AUSTRALIA - NEW SOUTH WALES - Cape Banks to Cabbage Tree Bay - Scientific instruments eastwards

Former Notice - 701(T)/2023 is cancelled
Sydney Institute of Marine Science

Subsurface scientific instruments exist as follows:

<i>Position</i>	<i>Metres below surface</i>
33° 47'.92 S 151° 17'.71 E	9
33° 48'.05 S 151° 18'.33 E	24
33° 49'.59 S 151° 17'.89 E	28
33° 49'.85 S 151° 17'.64 E	28
33° 50'.05 S 151° 17'.48 E	27
33° 50'.25 S 151° 17'.30 E	26.5
33° 53'.74 S 151° 17'.30 E	27
33° 53'.91 S 151° 17'.75 E	41
33° 54'.17 S 151° 18'.16 E	58
33° 54'.43 S 151° 18'.59 E	63
33° 54'.69 S 151° 19'.05 E	64
33° 54'.96 S 151° 19'.51 E	64
33° 55'.21 S 151° 19'.93 E	71
33° 55'.46 S 151° 20'.36 E	70
33° 55'.72 S 151° 20'.79 E	80
33° 55'.98 S 151° 21'.24 E	80
33° 56'.25 S 151° 21'.71 E	82
33° 56'.49 S 151° 22'.16 E	87
33° 56'.75 S 151° 22'.59 E	90
33° 57'.06 S 151° 23'.02 E	98
33° 57'.32 S 151° 23'.47 E	119.

Chart temporarily affected - Aus 200 - Aus 489 - Aus 808 - Aus 809

331(T)/2026 AUSTRALIA - QUEENSLAND - Double Island Point to Yeppoon - Obstructions; nav aids off station

Former Notice - 248(T)/2026 is cancelled
Maritime Safety Queensland Notice 122(T)/2026

Cancel this notice on receipt.

Chart formerly affected - Aus 245 - Aus 246 - Aus 265 - Aus 815 - Aus 816 - Aus 817 - Aus 818 - Aus 819 - Aus 820

332(T)/2026 AUSTRALIA - QUEENSLAND - Gladstone - Auckland Point Wharves - Harbour works completed

Former Notice - 64(T)/2021 is cancelled
Maritime Safety Queensland

Cancel this notice on receipt.

Chart formerly affected - Aus 245

333(T)/2026 AUSTRALIA - QUEENSLAND - Townsend Island - Entry prohibited area

Maritime Safety Queensland NTM 170(T)/2026

During the period 22 April 2026 to 22 June 2026, live firing will be conducted. Entry is prohibited to all vessels in an area bounded by the following positions:

22° 12'.28 S 150° 22'.50 E
22° 10'.02 S 150° 30'.06 E
22° 15'.28 S 150° 38'.10 E
22° 18'.98 S 150° 33'.98 E
22° 19'.20 S 150° 26'.81 E.

Mariners are advised to keep clear of this area.

Chart temporarily affected - Aus 260 - Aus 367 - Aus 822

334(T)/2026 AUSTRALIA - NORTHERN TERRITORY - Van Diemen Gulf - Abbott Shoal - Light buoy relit*Former Notice - 292(T)/2026 is cancelled*

Australian Maritime Safety Authority Auscoast Warning 72/2026

Cancel this notice on receipt.

Chart formerly affected - Aus 720**335(T)/2026 AUSTRALIA - NORTHERN TERRITORY - WESTERN AUSTRALIA - Darwin to Seringapatam Reef - Survey operations**

EGS Survey Pty Ltd

On or about 20 April 2026, vessel *Shark 1*, with a 500m towed array, will begin geophysical and geotechnical survey operations along a 500m wide corridor between the following positions:

12° 26'.38 S 130° 47'.21 E

12° 20'.41 S 130° 41'.68 E

12° 13'.99 S 130° 26'.17 E

12° 20'.80 S 129° 03'.49 E

12° 29'.07 S 126° 12'.14 E

13° 20'.83 S 122° 00'.30 E.

The vessels will display appropriate lights and shapes and monitor VHF Ch 16.

Mariners are advised to keep a safe distance and navigate with caution in the area.

Chart temporarily affected - Aus 25 - Aus 309 - Aus 314 - Aus 315 - Aus 316 - Aus 319 - Aus 322 - Aus 4603 (INT 603) - Aus 4722 (INT 722)**336(T)/2026 AUSTRALIA - WESTERN AUSTRALIA - Barrow Island - Double Island - Platform relit***Former Notice - 254(T)/2026 is cancelled*

Santos

Cancel this notice on receipt.

Chart formerly affected - Aus 65 - Aus 327 - Aus 328 - Aus 742**337(T)/2026 AUSTRALIA - WESTERN AUSTRALIA - Dampier - Hampton Harbour - Depths**

Revelare Hydrospatial

Latest survey indicates shoaler depths than those charted in the vicinity of the following positions:

20° 40'.25 S 116° 41'.68 E

20° 39'.72 S 116° 41'.98 E.

Mariners are advised to navigate with caution in the area.

Chart temporarily affected - Aus 60**338(T)/2026 AUSTRALIA - WESTERN AUSTRALIA - Dampier Archipelago - Platform unlit northwards**

Vermilion Oil and Gas Australia

The *Wandoo A* platform, *Mo(U)15s* (20° 08'.33 S 116° 25'.29 E), is unlit.**Chart temporarily affected - Aus 327 - Aus 742 - Aus 4603 (INT 603) - Aus 4708 (INT 708) - Aus 4722 (INT 722) - Aus 4723 (INT 723)****339(T)/2026 AUSTRALIA - WESTERN AUSTRALIA - Dampier Archipelago - Mooring buoy unlit northwards**

Vermilion Oil and Gas Australia

The lit mooring buoy, *Mo(U)Y.15s* (20° 06'.94 S 116° 26'.10 E), is unlit.**Chart temporarily affected - Aus 327 - Aus 742**

340(T)/2026 AUSTRALIA - WESTERN AUSTRALIA - Fremantle - Drilling operations

Department of Transport WA Notice 6816/2026

Jack up barge *Sealift 2* and support vessels are conducting drilling operations in the vicinity of the following positions:

31° 57'.34 S 115° 40'.39 E
 31° 57'.45 S 115° 40'.60 E
 31° 57'.68 S 115° 40'.84 E
 31° 57'.90 S 115° 41'.18 E
 31° 58'.66 S 115° 41'.42 E
 31° 59'.21 S 115° 41'.45 E
 31° 59'.67 S 115° 41'.45 E
 32° 00'.63 S 115° 41'.49 E
 32° 04'.08 S 115° 42'.16 E
 32° 05'.18 S 115° 42'.33 E
 32° 06'.74 S 115° 42'.68 E
 32° 08'.02 S 115° 42'.96 E.

Vessels will monitor VHF Ch 12 and Ch 16.

Mariners are advised to navigate with caution in the area. 50m clearance requested.

Chart temporarily affected - Aus 112 - Aus 117 - Aus 754

341(T)/2026 AUSTRALIA - WESTERN AUSTRALIA - Gascoyne River - Flooding; obstructions

Former Notice - 295(T)/2026 is cancelled

Department of Transport WA

Cancel this notice on receipt.

Chart formerly affected - Aus 73 - Aus 331

342(T)/2026 AUSTRALIA - WESTERN AUSTRALIA - Joseph Bonaparte Gulf - Subsea operations

Eni Australia Ltd

On or about 27 April 2026, vessels *Skandi Emerald* and *MMA Pinnacle* will begin well intervention works in position 13° 53'.69 S 128° 29'.05 E.

Chart temporarily affected - Aus 318

343(T)/2026 AUSTRALIA - WESTERN AUSTRALIA - Mandurah - Cable laying operations; diving operations

Department of Transport WA

Cable laying and diving operations are taking place in the vicinity of the following positions:

32° 31'.62 S 115° 37'.59 E
 32° 28'.48 S 115° 44'.26 E.

Mariners are advised to navigate with caution in the area.

Chart temporarily affected - Aus 755

344(T)/2026 AUSTRALIA - WESTERN AUSTRALIA - Ningaloo Reef - Sandy Point to Winderabandi Point - Scientific instruments westwards

Former Notice - 217(T)/2026 is cancelled

The University of Western Australia , Department of Transport WA Notice 6799/2026

Rope and mooring tackle from a wave buoy that has broken free may be floating on or just below the surface in position 22° 24'.40 S 113° 40'.11 E.

Subsurface scientific instruments, 10m below the surface, exist in the following positions:

22° 26'.52 S 113° 39'.54 E
 22° 26'.65 S 113° 36'.56 E
 22° 28'.98 S 113° 38'.23 E.

Chart temporarily affected - Aus 745

345(T)/2026 AUSTRALIA - WESTERN AUSTRALIA - North West Cape - Obstruction northwards
Former Notice - 218(T)/2026 is cancelled
 Santos

A direct turret mooring, with least depth 35m, exists in position 21° 24'.21 S 114° 05'.29 E.

Chart temporarily affected - Aus 328 - Aus 329 - Aus 744 - Aus 4723 (INT 723)

346(T)/2026 AUSTRALIA - WESTERN AUSTRALIA - Passage Islands - Scientific instruments
 Department of Transport WA Notice 6807/2026

Special light buoys, *Fl.Y.4s*, exist in the following positions:

20° 54'.68 S 115° 46'.13 E
 20° 54'.95 S 115° 44'.76 E
 20° 55'.13 S 115° 45'.39 E
 20° 55'.21 S 115° 46'.82 E
 20° 55'.25 S 115° 45'.37 E
 20° 55'.63 S 115° 46'.20 E
 20° 55'.81 S 115° 45'.03 E
 20° 56'.43 S 115° 45'.26 E
 20° 58'.32 S 115° 58'.44 E
 21° 01'.07 S 115° 52'.63 E
 21° 05'.06 S 115° 51'.76 E.

Mariners are advised to navigate with caution in the area.

Chart temporarily affected - Aus 742 - Aus 743

347(T)/2026 AUSTRALIA - WESTERN AUSTRALIA - Thevenard Island - Light buoy off station
 Pilbara Ports Authority Notice A8/2026

The special light buoy, *Fl.4s* (21° 24'.49 S 114° 52'.54 E), is off station.

Mariners are advised to navigate with caution in the area.

Chart temporarily affected - Aus 743 - Aus 744

348(T)/2026 INDIAN OCEAN - Seringapatam Reef to Christmas Island - Geotechnical and geophysical operations
 EGS Survey Pty Ltd

On or about 20 April 2026, vessel *Ocean Vanguard*, with a 500m towed array, will begin geophysical and geotechnical survey operations in an area bounded by the following positions:

10° 25'.55 S 101° 47'.53 E
 13° 33'.22 S 110° 41'.13 E
 14° 12'.14 S 117° 23'.68 E
 14° 15'.84 S 120° 34'.27 E
 13° 29'.11 S 123° 54'.04 E
 12° 35'.70 S 123° 44'.90 E
 13° 16'.69 S 120° 23'.86 E
 13° 16'.02 S 117° 24'.02 E
 12° 13'.92 S 111° 03'.39 E
 9° 06'.90 S 102° 44'.48 E.

The vessels will display appropriate lights and shapes and monitor VHF Ch 16.

Mariners are advised to keep a safe distance and navigate with caution in the area.

Chart temporarily affected - Aus 314 - Aus 319 - Aus 322 - Aus 400 - Aus 608 - Aus 920 - Aus 4603 (INT 603) - Aus 4708 (INT 708) - Aus 4722 (INT 722) - Aus 4723 (INT 723)

349(T)/2026 AUSTRALIA - VICTORIA - Bass Strait - Cable laying operations

Gulf Agency Company (Australia)

Cable laying operations will be conducted in Bass Strait as part of the Honomoana and Talaylink cable systems. Cable lay and post lay inspection activities will occur along the route shown in the diagram and mariners are advised to keep clear of vessel, *Resolute* during activities. Further advice on specific areas of activity will be issued through the AUSCOAST warning system.

Note: For e-notice users, please see full edition for map.

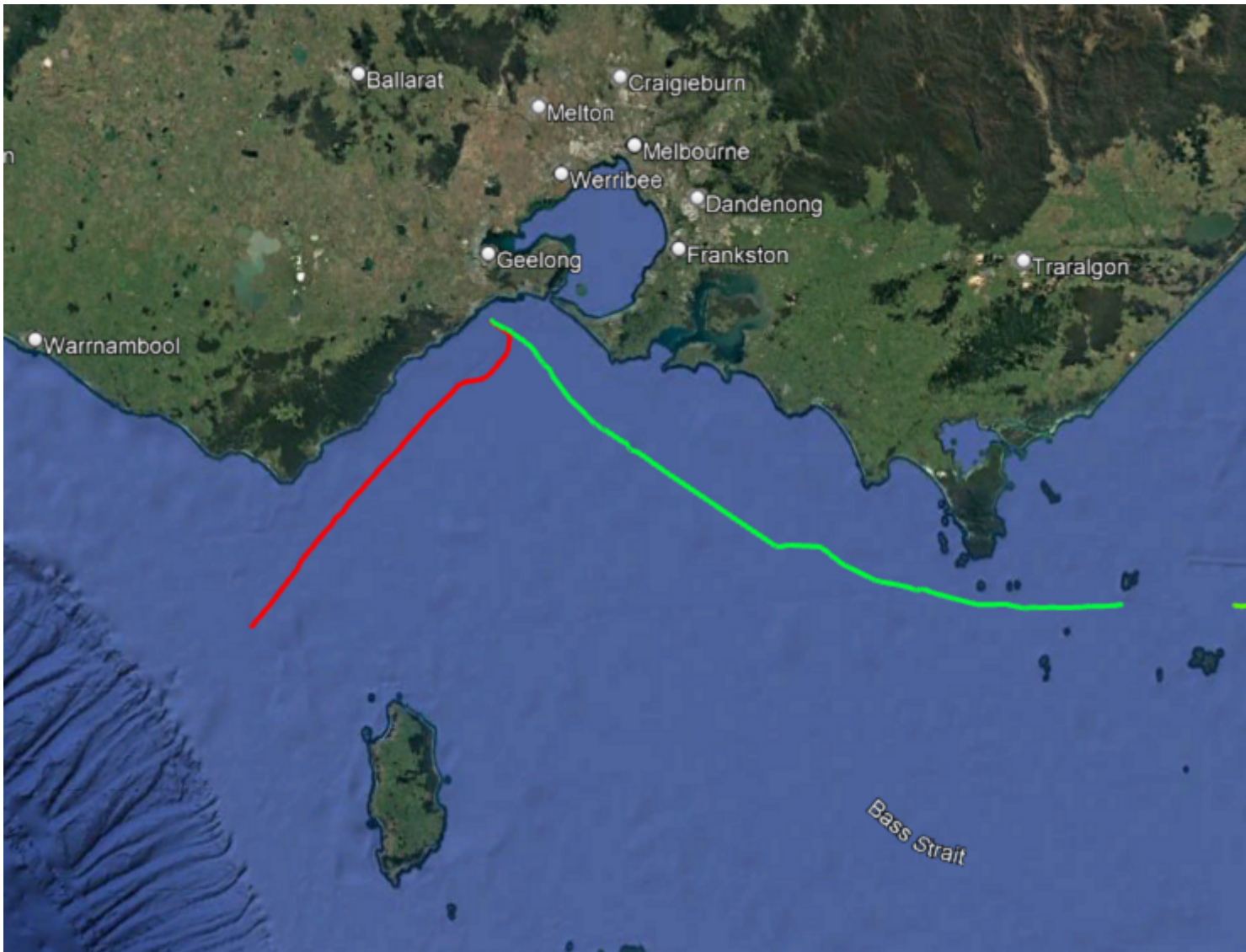


Chart temporarily affected - Aus 349 - Aus 357 - Aus 487 - Aus 801 - Aus 802

350(T)/2026 AUSTRALIA - VICTORIA - Port Campbell - Drilling operations completed

Former Notice - 36(T)/2026 is cancelled

MODU Transocean Equinox

Cancel this notice on receipt.

Chart formerly affected - Aus 349

351(T)/2026 AUSTRALIA - VICTORIA - Port Campbell - Scientific instruments recovered southwestwards

Former Notice - 129(T)/2026 is cancelled
Amplitude Energy

Cancel this notice on receipt.

Chart formerly affected - Aus 349**352(T)/2026 AUSTRALIA - VICTORIA - Port Phillip - Brighton - Light buoy off station**

Parks Victoria Notice 203(T)/2026

The special light buoy, *Fl(3)Y.10s R2* (37° 54'.54 S 144° 56'.34 E), is off station.

Chart temporarily affected - Aus 155**353(T)/2026 AUSTRALIA - BASS STRAIT - Hogan Group - Light float recovered**

Former Notice - 159(T)/2025 is cancelled
Orsted

Cancel this notice on receipt.

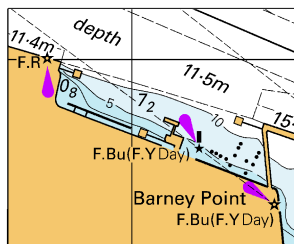
Chart formerly affected - Aus 357 - Aus 487

II

HYDROGRAPHIC REPORTS

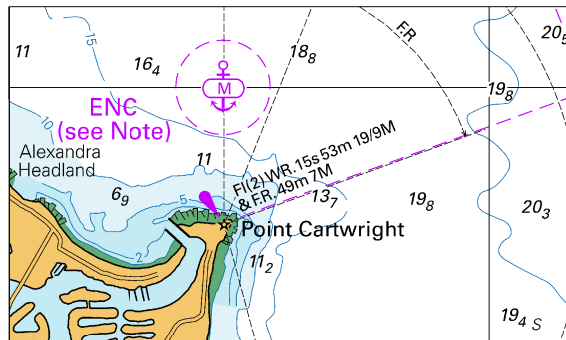
NIL

To accompany Australian Notice to Mariners 319/2026



Block for chart Aus 245 (38.0 x 31.5mm)
© Commonwealth of Australia 2026

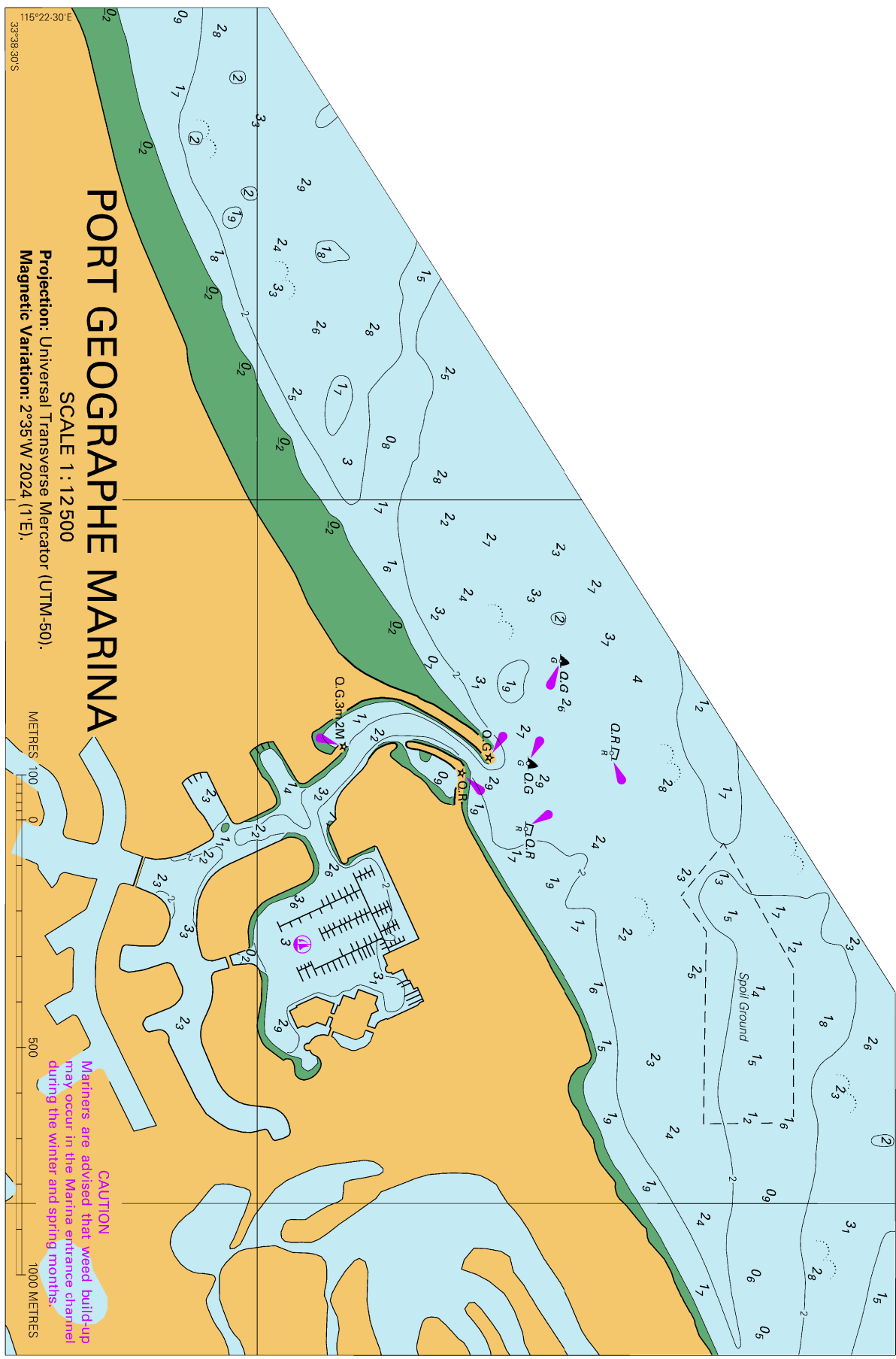
To accompany Australian Notice to Mariners 320/2026



Block for chart Aus236

(74.4 x 44.2mm)

© Commonwealth of Australia 2026



PORT GEOGRAPHE MARINA

SCALE 1 : 12500

Projection: Universal Transverse Mercator (UTM-50).

Magnetic Variation: 2°35'W 2024 (1°E).



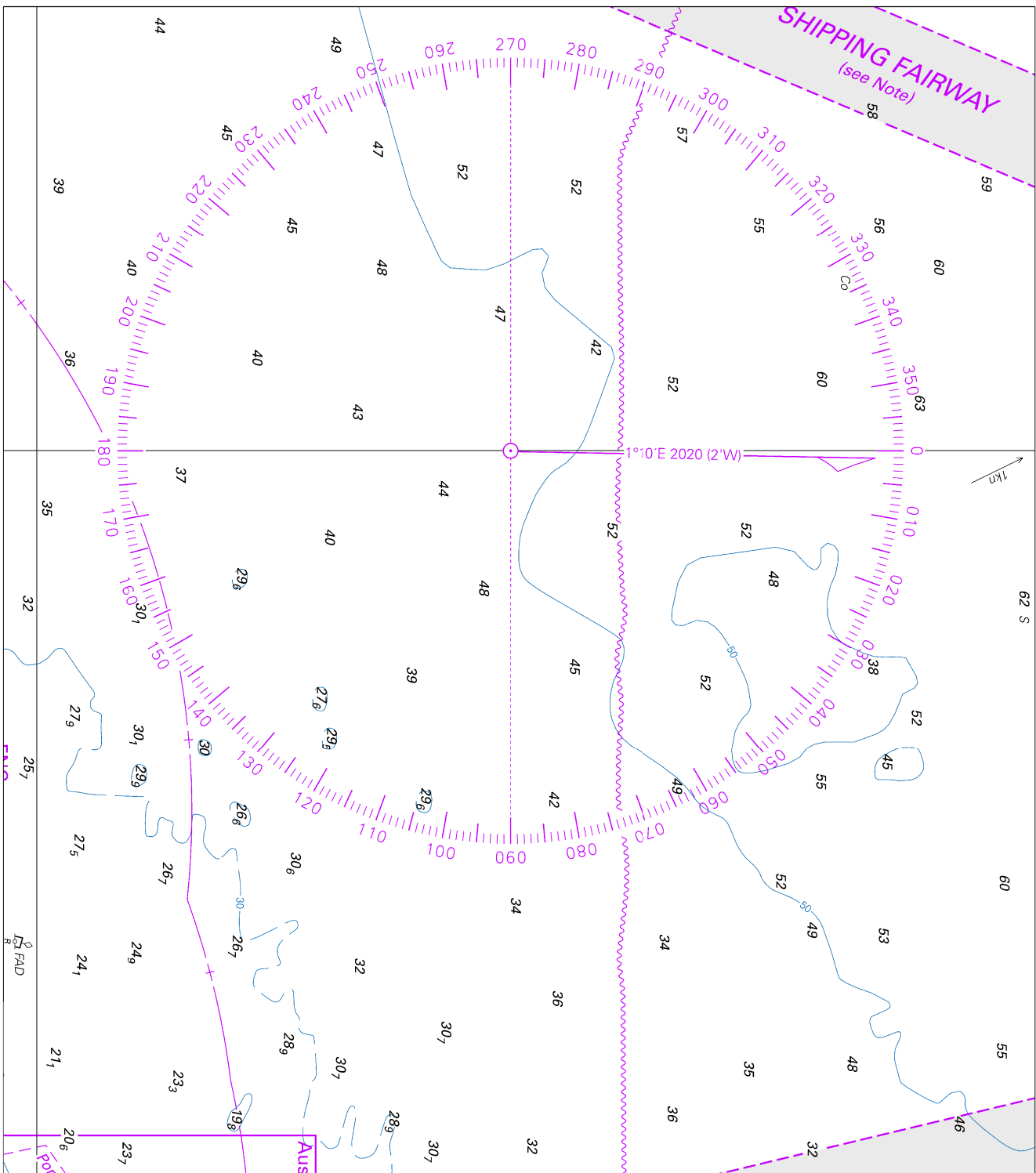
CAUTION
Mariners are advised that weed build-up may occur in the Marina entrance channel during the winter and spring months.

Block for chart Aus 116

© Commonwealth of Australia 2026

(640 x 156.6mm)
2378

To accompany Australian Notice to Mariners 327/2026



Block for chart Aus 326

© Commonwealth of Australia 2026

(197.6 x 174.1mm)

