



# AUSTRALIAN NOTICES TO MARINERS

## Notices 84 - 133

Published fortnightly by the Australian Hydrographic Office

Australian Notices to Mariners are the authority for correcting charts and publications published by the Australian Hydrographic Office covering Australia, Papua New Guinea, Solomon Islands, Australian Antarctic Territory and Timor-Leste.

Commodore D.G. MULLINS, RAN  
*Hydrographer of Australia*

---

### SECTIONS.

- I. Australian Notices to Mariners, including blocks and notes.
- II. Hydrographic Reports.

### SUPPLEMENTS.

- I. Tracings
- II. Cumulative List of Australian Notices to Mariners.
- III. Cumulative List of Temporary and Preliminary Australian Notices to Mariners.
- IV. Temporary and Preliminary Notices in force.

---

© Commonwealth of Australia 2026

This work is copyright. Apart from any use permitted under the Copyright Act 1968, no part may be reproduced by any process, adapted, communicated or commercially exploited without prior written permission from The Commonwealth represented by the Australian Hydrographic Office.

## IMPORTANT NOTICE

This edition of Notices to Mariners includes all navigationally significant information affecting AHO products which the AHO has become aware of since the last edition. All reasonable efforts have been made to ensure the accuracy and completeness of the information, including third party information, on which these updates are based. The AHO regards third parties from which it receives information as reliable, however the AHO cannot verify all such information and errors may therefore exist. The AHO does not accept liability for errors in third party information.

---

## GENERAL INSTRUCTIONS

The substance of these notices should be inserted on the charts affected.

Bearings are referred to the true compass and are reckoned clockwise from North; those relating to lights are given as seen by an observer from seaward.

Positions quoted in notices relate to WGS84 which is the horizontal datum for all charts produced by the Australian Hydrographic Office.

The range quoted for a light is its nominal range.

Depths are with reference to the chart datum of each chart. Heights are above mean high water springs or mean higher high water, as appropriate.

The capital letter (P) or (T) after the number of any notice denotes a preliminary or temporary notice respectively, which are contained separately at the end of the permanent notices.

---

## REPORTING OF DANGERS

Mariners are particularly requested to notify the AUSTRALIAN HYDROGRAPHIC OFFICE, Locked Bag 8801 Wollongong, NSW 2500 (e-mail [datacentre@hydro.gov.au](mailto:datacentre@hydro.gov.au) or, alternatively by filling in and submitting the [Hydrographic Notes](#) forms located on the web site – [www.hydro.gov.au](http://www.hydro.gov.au)), immediately on the discovery of new dangers or suspected dangers to navigation. For changes or defects in aids to navigation notify AusSAR (Fax 02-6230 6868 or email [rccaus@amsa.gov.au](mailto:rccaus@amsa.gov.au)).

---

## AUTHORISED USE

Copies of Australian notices are available free of charge from the Australian Hydrographic Office (AHO) website ([www.hydro.gov.au](http://www.hydro.gov.au)) and through the eNotices (email) service ([www.hydro.gov.au/enotices/enotices.htm](http://www.hydro.gov.au/enotices/enotices.htm)).

Individual Notices may be copied for the purpose of inserting Notice substance on official charts and publications. Paper copies may be printed by chart agents and distributed to customers on a cost recovery basis. Participating chart agents are listed on the AHO website as providing a 'Paper Notices to Mariners' service ([www.hydro.gov.au/prodserv/agents-list.htm](http://www.hydro.gov.au/prodserv/agents-list.htm)). Copies of the notices may not be sold for profit without prior written agreement.

## NUMERICAL INDEX OF NOTICES TO MARINERS

### Edition No 3

Notices	Aus Chart, INT Chart, ENC Cell, AHP, BA Pubs
84	Aus 195, 198, 615
85	Aus 118, 136
86	Aus 200, 808, 809
87	Aus 4603, INT 603
88	Aus 249, 250
89	Aus 236
90	Aus 248
91	Aus 14
92	Aus 4603, INT 603
93	Aus 4722, INT 722
94	Aus 115
95	Aus 57, 742
96	Aus 607
97	Aus 357, 487
98	Aus 181
99	Aus 157
100	Aus 349
101	SLB 103
102(T)	Aus 808
103(T)	Aus 808
104(T)	Aus 807, 808
105(T)	Aus 236
106(T)	Aus 245, 246
107(T)	Aus 245
108(T)	Aus 258
109(T)	Aus 258
110(T)	Aus 248, 249, 250, 251, 252, 253, 254, 256, 259, 260, 265, 367, 490, 819, 820, 821, 822, 823, 824, 825, 826, 827, 828, 829, 830
111(T)	Aus 14
112(T)	Aus 328
113(T)	Aus 73, 331
114(T)	Aus 117
115(T)	Aus 57, 327, 742
116(T)	Aus 4723, INT 723
117(T)	Aus 755
118(T)	Aus 328, 742
119(T)	Aus 328
120(T)	Aus 328, 329
121(T)	Aus 120, 341
122(T)	Aus 341, 342
123(P)	Aus 605
124(T)	Aus 357
125(T)	Aus 357, 487
126(T)	Aus 357, 487, 4060, 4601, INT 60, 601
127(T)	Aus 357, 802
128(T)	Aus 181, 357, 802
129(T)	Aus 349
130(T)	Aus 157
131(T)	Aus 143, 144, 4709, INT 709
132(T)	Aus 143, 144
133(T)	SLB 201, 304

## NUMERICAL INDEX OF CHARTS AFFECTED

### Edition No 3

Aus Chart	Notices
Aus 14	91, 111(T)
Aus 57	95, 115(T)
Aus 73	113(T)
Aus 115	94
Aus 117	114(T)
Aus 118	85
Aus 120	121(T)
Aus 136	85
Aus 143	131(T), 132(T)
Aus 144	131(T), 132(T)
Aus 157	99, 130(T)
Aus 181	98, 128(T)
Aus 195	84
Aus 198	84
Aus 200	86
Aus 236	89, 105(T)
Aus 245	106(T), 107(T)
Aus 246	106(T)
Aus 248	90, 110(T)
Aus 249	88, 110(T)
Aus 250	88, 110(T)
Aus 251	110(T)
Aus 252	110(T)
Aus 253	110(T)
Aus 254	110(T)
Aus 256	110(T)
Aus 258	108(T), 109(T)
Aus 259	110(T)
Aus 260	110(T)
Aus 265	110(T)
Aus 327	115(T)
Aus 328	112(T), 118(T), 119(T), 120(T)
Aus 329	120(T)
Aus 331	113(T)
Aus 341	121(T), 122(T)
Aus 342	122(T)
Aus 349	100, 129(T)
Aus 357	97, 124(T), 125(T), 126(T), 127(T), 128(T)
Aus 367	110(T)
Aus 487	97, 125(T), 126(T)
Aus 490	110(T)
Aus 605	123(P)
Aus 607	96
Aus 615	84
Aus 742	95, 115(T), 118(T)
Aus 755	117(T)
Aus 802	127(T), 128(T)
Aus 807	104(T)
Aus 808	86, 102(T), 103(T), 104(T)
Aus 809	86
Aus 819	110(T)
Aus 820	110(T)
Aus 821	110(T)
Aus 822	110(T)

Aus Chart	Notices
Aus 823	110(T)
Aus 824	110(T)
Aus 825	110(T)
Aus 826	110(T)
Aus 827	110(T)
Aus 828	110(T)
Aus 829	110(T)
Aus 830	110(T)
Aus 4060	126(T)
Aus 4601	126(T)
Aus 4603	87, 92
Aus 4709	131(T)
Aus 4722	93
Aus 4723	116(T)
SLB 103	101
SLB 201	133(T)
SLB 304	133(T)

INT Chart	Notices
INT 60	126(T)
INT 601	126(T)
INT 603	87, 92
INT 709	131(T)
INT 722	93
INT 723	116(T)

**84 AUSTRALIA - Products - New Charts, New Editions, Withdrawn Charts**

Australian Hydrographic Office , UKHO

**New Charts**

Chart	Title and Geographical limits	Scale	Publication Date	Remarks
NIL				

**New Electronic Navigation Chart (Aus ENC)**

Cell Name	Title	Publication Date	Remarks
NIL			

**New Editions and Withdrawn Charts**

Chart	Title	Scale	Publication Date	Remarks
Aus 195 (Edition 7)	Australia - East Coast - New South Wales - Approaches to Port Kembla	1:25 000	6/2/2026	New edition with general updating throughout; including latest bathymetric data. <b>Chart Aus 195 Edition 6 dated 25 November 2022 is now superseded and must be withdrawn from use.</b>
Aus 198 (Edition 5)	Australia - East Coast - New South Wales - Botany Bay and Port Hacking	1:25 000	6/2/2026	New edition with general updating throughout; including latest bathymetric data. <b>Chart Aus 198 Edition 4 dated 11 October 2024 is now superseded and must be withdrawn from use.</b>
Aus 615 (Edition 4)	Australia - East Coast - Queensland - Plans in the Coral Sea (Sheet 3) Plans: Flinders Reefs Flora Reef and Holmes Reefs	1:150 000 1:100 000	6/2/2026	New edition with general updating throughout; including latest bathymetric data. <b>Chart Aus 615 Edition 3 dated 20 September 2019 is now superseded and must be withdrawn from use.</b>

**Admiralty publication**

NP No	Title	Date	Remarks
NP284(4)	ADMIRALTY List of Radio Signals Meteorological Observation Stations Volume 4, 7th Edition (2026).	22/1/2026	The 6th Edition (2025) is cancelled.
NP136(2) & e-NP136(2)	ADMIRALTY Ocean Passages for the World Indian and Pacific Oceans Volume 2, 3rd Edition (2026).	5/2/2026	The 2nd Edition (2021) is cancelled.

**Chart permanently withdrawn**

Charts listed above as withdrawn no longer meet chart carriage requirements and should be marked as "superseded" and replaced with the new chart/ new edition listed prior to passage through the area covered by the new chart.

When placing orders with a chart agent between notice of forthcoming edition and its publication, mariners should advise whether their order pertains to the current edition or the new edition.

For further details refer to the AHO website at [www.hydro.gov.au](http://www.hydro.gov.au) for new edition and new chart stock arrival information.

**85 AUSTRALIA - Products - New Charts and New Editions to be published shortly**

Australian Hydrographic Office

**New Charts to be published shortly**

Chart	Title	Scale	Remarks
NIL			

**New Editions to be published shortly**

Chart	Title	Scale	Remarks
Aus 118	Australia - South Coast - Western Australia - Approaches to King George Sound	1:50 000	New edition with general updating throughout; including latest bathymetric data.
Aus 136	Australia - South Coast - Approaches to Whyalla and Port Pirie	1:75 000	New edition with general updating throughout; including updates to port boundaries and latest bathymetric data.

**86 AUSTRALIA - NEW SOUTH WALES - Port Jackson - South Head - Wrecks southeastwards**

Port Authority of New South Wales

**Aus 200 [1061/2025]**

Insert	depth, 57m, enclosed by danger circle with legend, <i>Wk</i>	33° 51'.744 S	151° 18'.675 E
Replace	wreck with depth, 56m, enclosed by danger circle with legend, <i>Wk</i>	33° 51'.91 S	151° 18'.57 E
	wreck depth, 39m, with wreck depth, 40m	33° 52'.00 S	151° 17'.92 E
	wreck depth, 30m, with wreck depth, 22 <sub>8</sub> m	33° 52'.01 S	151° 17'.41 E
Delete	depth, 53m, and enclosing danger circle with legend, <i>Wk</i>	33° 51'.77 S	151° 18'.69 E

**Aus 808 [3/2026]**

Replace	wreck depth, 53m, with wreck depth, 57m	33° 51'.8 S	151° 18'.7 E
	wreck depth, 39m, with wreck depth, 40m	33° 52'.0 S	151° 17'.9 E

**Aus 809 [897/2025]**

Replace	wreck depth, 53m, with wreck depth, 57m	33° 51'.8 S	151° 18'.7 E
	wreck depth, 39m, with wreck depth, 40m	33° 52'.0 S	151° 17'.9 E

**87 PACIFIC OCEAN - Ninigo Islands - Depths**

UKHO

**Aus 4603 (INT 603) [45/2026]**

Insert	<a href="#">accompanying block</a>	1° 41'.5 S	144° 46'.8 E
--------	------------------------------------	------------	--------------

**88 AUSTRALIA - QUEENSLAND - Hay Point - Light buoy**

Maritime Safety Queensland Notice 3/2026

**Aus 249 [5/2026]**

Move	light buoy	21° 16'.7 S	149° 19'.3 E
	to	21° 16'.91 S	149° 19'.40 E

**Aus 250 (Hay Point) [816/2025]**

Move	light buoy	21° 16'.67 S	149° 19'.33 E
	to	21° 16'.910 S	149° 19'.397 E

**89 AUSTRALIA - QUEENSLAND - Moreton Bay - Kedron Brook Floodway - Light beacon**

Maritime Safety Queensland Notice 53/2026

**Aus 236 [817/2025]**

Delete	light beacon	27° 20'.7 S	153° 06'.8 E
--------	--------------	-------------	--------------

**90 AUSTRALIA - QUEENSLAND - Port Clinton - South Arm - Nomenclature**

Australian Hydrographic Office

**Aus 248 [1015/2025]**

Amend	name to <i>Cowan Creek</i>	22° 37'.74 S	150° 44'.38 E
-------	----------------------------	--------------	---------------

**91 AUSTRALIA - NORTHERN TERRITORY - Groote Eylandt - Milner Bay - Mooring buoy**

Northern Territory Government Notice 2/2026

**Aus 14 (Milner Bay) [1002/2023]**

Insert	lit yellow conical mooring buoy, <i>Fl. Y.3s</i>	13° 51'.295 S	136° 24'.905 E
--------	--	---------------	----------------

Delete	depth, 4,m	13° 51'.29 S	136° 24'.90 E
--------	------------	--------------	---------------

**92 AUSTRALIA - TIMOR SEA - Sunrise Bank - Depths**

UKHO

**Aus 4603 (INT 603) [87/2026]**

Insert	depth, 34m	9° 49'.5 S	127° 52'.1 E
--------	------------	------------	--------------

Delete	depth, 33m	9° 44'.0 S	128° 10'.7 E
--------	------------	------------	--------------

**93 AUSTRALIA - WESTERN AUSTRALIA - Broome - Light**

UKHO

**Aus 4722 (INT 722) [NE 28/11/2025]**

Delete	light	17° 57'.1 S	122° 14'.0 E
--------	-------	-------------	--------------

**94 AUSTRALIA - WESTERN AUSTRALIA - Bunbury - Infrastructure; depths**

Department of Transport PNG

**Aus 115 [10/2026]**

Insert	<a href="#">accompanying block</a>	33° 19'.18 S	115° 39'.40 E
--------	------------------------------------	--------------	---------------

**95 AUSTRALIA - WESTERN AUSTRALIA - Dampier Archipelago - Enderby Island - Wreck; foul ground**

Pilbara Ports Authority

**Aus 57 [11/2026]**

Insert	dangerous wreck, centred on	20° 36'.11 S	116° 35'.15 E
	#, centred on	20° 37'.18 S	116° 34'.34 E

**Aus 742 [11/2026]**

Insert	dangerous wreck, centred on	20° 36'.11 S	116° 35'.15 E
	#, centred on	20° 37'.18 S	116° 34'.34 E

Delete	depth, 11,m	20° 36'.2 S	116° 35'.2 E
--------	-------------	-------------	--------------

**96 INDIAN OCEAN - Cocos (Keeling) Islands - South Keeling Islands - Port Refuge - Wreck**

LINX

**Aus 607 [543/2025]**

Insert	non-dangerous wreck, centred on	12° 05'.064 S	96° 51'.948 E
--------	---------------------------------	---------------	---------------

**97 AUSTRALIA - VICTORIA - Ninety Mile Beach - Wreck**

S Saville

**Aus 357 [1026/2025]**

Replace	wreck with depth, 19 <sub>g</sub> m, enclosed by danger circle with legend, <i>Wk</i>	38° 34'.6 S	147° 06'.5 E
---------	---	-------------	--------------

**Aus 487 [1026/2025]**

Replace	wreck with depth, 19 <sub>g</sub> m, enclosed by danger circle with legend, <i>Wk</i>	38° 34'.6 S	147° 06'.5 E
---------	---	-------------	--------------

**98 AUSTRALIA - VICTORIA - Port Albert Entrance - Light buoy**

Gippsland Ports NTM 057/2026

**Aus 181 [940/2025]**

Insert	starboard lateral conical light buoy, <i>Fl.G.2s</i> , without topmark	38° 44'.81 S	146° 40'.41 E
--------	--	--------------	---------------

**99 AUSTRALIA - VICTORIA - Port Phillip - Prince George Bank - Light beacon***Former Notice - 576(T)/2025 is cancelled*

Parks Victoria Notice 66/2026

**Aus 157 [51/2026]**

Insert	east cardinal light beacon, <i>Q(3)10s</i> , with topmark	38° 07'.639 S	144° 42'.995 E
--------	---	---------------	----------------

**100 AUSTRALIA - VICTORIA - Port Phillip - Point Lonsdale - Depths**

Australian Hydrographic Office

**Aus 349 [49/2026]**

Insert	<a href="#">accompanying block</a>	38° 19'.0 S	144° 33'.0 E
--------	------------------------------------	-------------	--------------

**101 SOLOMON ISLANDS - Florida Islands - Tulaghi Harbour - Depths**

Solomon Islands Maritime Authority

**SLB 103 (Tulaghi Harbour) [53/2021]**

Insert	<a href="#">accompanying block</a>	9° 06'.97 S	160° 09'.89 E
	<a href="#">accompanying ZOC diagram in S border</a>	9° 09'.0 S	160° 08'.0 E



**102(T)/2026 AUSTRALIA - NEW SOUTH WALES - Bulli - Obstruction eastwards**  
Port Kembla Water Police

A floating obstruction exists in position 34° 20'.79 S 151° 10'.82 E.

Mariners are advised to navigate with caution in the area.

**Chart temporarily affected - Aus 808**

**103(T)/2026 AUSTRALIA - NEW SOUTH WALES - Cape Banks - Fish aggregating device relocated eastwards**  
NSW Department of Primary Industries

The special light buoy, *Fl. Y. 5s (Oct-May)* (33° 59'.32 S 151° 20'.94 E), has been temporarily relocated to position 33° 59'.47 S 151° 22'.62 E.

**Chart temporarily affected - Aus 808**

**104(T)/2026 AUSTRALIA - NEW SOUTH WALES - Jervis Bay - Cable laying operations**  
Department of Defence

Vessel *Decisive* is conducting cable laying operations in an area bounded by the following positions:

35° 07'.36 S 150° 46'.31 E  
35° 14'.06 S 151° 04'.71 E  
35° 11'.27 S 151° 05'.87 E  
35° 05'.40 S 150° 48'.72 E.

The vessel will be restricted in its ability to manoeuvre and mariners are requested to maintain a sufficient clearance.

**Chart temporarily affected - Aus 807 - Aus 808**

**105(T)/2026 AUSTRALIA - QUEENSLAND - Bribie Island - Pumicestone Channel - Dredging operations**  
*Former Notice - 871(T)/2025 is cancelled*  
Maritime Safety Queensland Notice 50(T)/2026

Dredging operations are in progress in an area bounded by the following positions:

26° 50'.29 S 153° 07'.73 E  
26° 49'.04 S 153° 07'.96 E  
26° 48'.92 S 153° 07'.44 E  
26° 50'.27 S 153° 07'.21 E.

A floating and submerged pipeline, marked by pink and yellow buoys, exists in the area.

Mariners should navigate with extreme caution in the area and stay within the marked navigation channel due to constant moving of sandbanks.

**Chart temporarily affected - Aus 236**

**106(T)/2026 AUSTRALIA - QUEENSLAND - Gladstone - Dredging operations; bed levelling operations; survey operations completed**  
*Former Notice - 1074(T)/2025 is cancelled*  
Maritime Safety Queensland

Cancel this notice on receipt.

**Chart formerly affected - Aus 245 - Aus 246**

**107(T)/2026 AUSTRALIA - QUEENSLAND - Gladstone - North Channel - Scientific instrument recovered**  
*Former Notice - 1032(T)/2025 is cancelled*  
Maritime Safety Queensland

Cancel this notice on receipt.

**Chart formerly affected - Aus 245**

**108(T)/2026 AUSTRALIA - QUEENSLAND - Gladys Inlet - Light buoy off station**  
Maritime Safety Queensland Notice 33(T)/2026

The port lateral light buoy, *Fl.R.3s* (17° 30'.43 S 146° 04'.87 E), is off station.

Mariners are advised to navigate with caution in the area.

**Chart temporarily affected - Aus 258**

**109(T)/2026 AUSTRALIA - QUEENSLAND - Johnstone River - Light buoys restored**  
*Former Notice - 215(T)/2025 is cancelled*  
Maritime Safety Queensland

Cancel this notice on receipt.

**Chart formerly affected - Aus 258**

**110(T)/2026 AUSTRALIA - QUEENSLAND - Port Alma - Cairns - Nav aids destroyed or off station; depths**  
*Former Notice - 61(T)/2026 is cancelled*  
Maritime Safety Queensland

Cancel this notice on receipt.

**Chart formerly affected - Aus 248 - Aus 249 - Aus 250 - Aus 251 - Aus 252 - Aus 253 - Aus 254 - Aus 256 - Aus 259 - Aus 260 - Aus 265 - Aus 367 - Aus 490 - Aus 819 - Aus 820 - Aus 821 - Aus 822 - Aus 823 - Aus 824 - Aus 825 - Aus 826 - Aus 827 - Aus 828 - Aus 829 - Aus 830**

**111(T)/2026 AUSTRALIA - NORTHERN TERRITORY - Groote Eylandt - Bartalumba Bay to Milner Bay - Nav aids**  
*Former Notice - 878(T)/2025 is cancelled*  
Northern Territory Government Notice 22(T)/2024, 3(T)/2025, 33(T)/2025, 35(T)/2025, 3(T)/2026, 4(T)/2026

Daytime mooring buoys, *Fl.Y.3s*, exist in the following positions:

13° 48'.44 S 136° 28'.87 E  
13° 48'.35 S 136° 28'.38 E  
13° 48'.07 S 136° 28'.04 E  
13° 48'.15 S 136° 27'.14 E  
13° 48'.56 S 136° 27'.58 E  
13° 48'.77 S 136° 27'.80 E  
13° 48'.89 S 136° 28'.27 E.

Daytime mooring buoys, *Fl.Y.5s*, exist in positions 13° 51'.08 S 136° 24'.57 E and 13° 51'.19 S 136° 24'.66 E.

A cyclone mooring buoy, *Fl.Y.3s*, exists in position 13° 48'.77 S 136° 27'.33 E.

A port lateral light buoy, *Q.R*, exists in position 13° 51'.50 S 136° 25'.04 E.

Light buoys have been established to mark a channel to access Milner Bay boat ramp as follows:

Position	Remarks
13° 51'.85 S 136° 24'.97 E	port lateral light buoy, <i>Q.R No1</i>
13° 51'.87 S 136° 24'.98 E	starboard lateral light buoy, <i>Q.G No2</i>
13° 51'.82 S 136° 25'.02 E	port lateral light buoy, <i>Q.R No3</i>
13° 51'.83 S 136° 25'.05 E	starboard lateral light buoy, <i>Q.G No4</i>
13° 51'.77 S 136° 25'.08 E	port lateral light buoy, <i>Q.R No5</i>
13° 51'.77 S 136° 25'.12 E	starboard lateral light buoy, <i>Q.G No6</i>
13° 51'.71 S 136° 25'.07 E	port lateral light buoy, <i>Q.R No7</i>
13° 51'.71 S 136° 25'.10 E	starboard lateral light buoy, <i>Q.G No8</i>
13° 51'.66 S 136° 25'.05 E	port lateral light buoy, <i>Q.R No9</i>
13° 51'.65 S 136° 25'.07 E	starboard lateral light buoy, <i>Q.G No10</i> .

**Chart temporarily affected - Aus 14**

**112(T)/2026 AUSTRALIA - WESTERN AUSTRALIA - Barrow Island - Subsea operations; survey operations northwestwards**

DOF

On or about 17 February 2026, vessel *Skandi Inventor* will be conducting subsea operations and survey operations in positions 19° 48'.59 S 114° 36'.34 E and 19° 52'.73 S 114° 36'.48 E. A 5M radius cautionary zone and a 0.5M radius exclusion zone exists around each position.

Mariners are advised to navigate with caution in the area.

**Chart temporarily affected - Aus 328**

**113(T)/2026 AUSTRALIA - WESTERN AUSTRALIA - Carnarvon - Light buoy off station**

Department of Transport WA Notice 6712/2026

The south cardinal light buoy, Q(6)+LFl.15s 5M (24° 54'.39 S 113° 37'.71 E), is off station.

Mariners are advised to navigate with caution in the area.

**Chart temporarily affected - Aus 73 - Aus 331**

**114(T)/2026 AUSTRALIA - WESTERN AUSTRALIA - Cockburn Sound - Jervoise Bay - Northern Harbour - Wind turbine**

Former Notice - 558(T)/2025 is cancelled  
INF66

Cancel this notice on receipt.

**Chart formerly affected - Aus 117**

**115(T)/2026 AUSTRALIA - WESTERN AUSTRALIA - Dampier Archipelago - Roly Rock - Drill rig moved**

Former Notice - 876(T)/2024 is cancelled  
Australian Maritime Safety Authority

Cancel this notice on receipt.

**Chart formerly affected - Aus 57 - Aus 327 - Aus 742**

**116(T)/2026 AUSTRALIA - WESTERN AUSTRALIA - Exmouth Plateau - Subsea operations**

Former Notice - 24(T)/2026 is cancelled  
McDermott Australia , Australian Maritime Safety Authority

FPU *Scarborough* is conducting subsea operations in position 19° 55'.58 S 113° 14'.52 E.

Mariners are advised to navigate with caution in the area. 5M clearance requested.

**Chart temporarily affected - Aus 4723 (INT 723)**

**117(T)/2026 AUSTRALIA - WESTERN AUSTRALIA - Geographe Bay - Eagle Bay - Light buoy restored**

Former Notice - 337(T)/2025 is cancelled  
Department of Transport WA

Cancel this notice on receipt.

**Chart formerly affected - Aus 755**

**118(T)/2026 AUSTRALIA - WESTERN AUSTRALIA - Montebello Islands - Drilling operations complete**

*Former Notice - 622(T)/2025 is cancelled*  
 MODU *Transocean Endurance*

Cancel this notice on receipt.

**Chart formerly affected - Aus 328 - Aus 742**

**119(T)/2026 AUSTRALIA - WESTERN AUSTRALIA - Montebello Islands - Drilling operations northwestwards**

MODU *Transocean Endurance*

Drill rig *Transocean Endurance* and support vessels are conducting drilling operations in position 19° 57'.07 S 115° 13'.93 E.

Mariners are advised to navigate with caution in the area.

**Chart temporarily affected - Aus 328**

**120(T)/2026 AUSTRALIA - WESTERN AUSTRALIA - Muiron Islands - Survey operations northwestwards**

Woodside Energy Ltd

Vessel *Reach Remote 2* is conducting survey operations in the Stybarrow Field (21° 27'.0 S 113° 49'.5 E).

Mariners are advised to navigate with caution in the area. 500m clearance requested.

**Chart temporarily affected - Aus 328 - Aus 329**

**121(T)/2026 AUSTRALIA - SOUTH AUSTRALIA - Great Australian Bight - Satellite re-entry complete**

*Former Notice - 66(T)/2026 is cancelled*  
 Australian Maritime Safety Authority

Cancel this notice on receipt.

**Chart formerly affected - Aus 120 - Aus 341**

**122(T)/2026 AUSTRALIA - SOUTH AUSTRALIA - Streaky Bay - Light beacon relit**

*Former Notice - 32(T)/2026 is cancelled*  
 Department for Infrastructure and Transport SA

Cancel this notice on receipt.

**Chart formerly affected - Aus 341 - Aus 342**

**123(P)/2026 SOUTHERN OCEAN - Heard Island - Shoaling**

Australian Antarctic Division

Latest survey indicates shoaler depths than those charted exist in an area bounded by the following positions:

53° 02'.19 S 73° 37'.27E

53° 01'.53 S 73° 38'.24E

53° 03'.13 S 73° 40'.89E

53° 03'.78 S 73° 40'.37E.

Mariners are advised to avoid navigating in the area.

Charts will be updated in due course.

**Chart which will be affected - Aus 605**

**124(T)/2026 AUSTRALIA - VICTORIA - Cape Conran - Subsea operations southwards**

Amplitude energy

On or about 15 February 2026, vessel *Fugro Etime* will be conducting subsea operations along the pipeline between the following positions:

37° 51'.19 S 148° 26'.30 E

38° 00'.30 S 148° 26'.65 E

38° 01'.56 S 148° 27'.05 E;

and

37° 52'.10 S 148° 26'.33 E

38° 06'.14 S 149° 00'.49 E.

Mariners are advised to navigate with caution in the area. 500m clearance requested.

**Chart temporarily affected - Aus 357****125(T)/2026 AUSTRALIA - VICTORIA - Ninety Mile Beach - Survey operations completed**

Former Notice - 232(T)/2025 is cancelled

Fugro

Cancel this notice on receipt.

**Chart formerly affected - Aus 357 - Aus 487****126(T)/2026 AUSTRALIA - VICTORIA - Ninety Mile Beach - Survey operations completed**

Former Notice - 109(T)/2025 is cancelled

Safe Transport Victoria Notice 40(T)/2025

Cancel this notice on receipt.

**Chart formerly affected - Aus 357 - Aus 487 - Aus 4060 (INT 60) - Aus 4601 (INT 601)****127(T)/2026 AUSTRALIA - VICTORIA - Ninety Mile Beach - Survey operations**

Fathom Pacific

Vessel, *Bass Trek*, is conducting benthic survey operations in an area bounded by the following positions:

38° 33'.62 S 146° 58'.38 E

38° 51'.56 S 147° 24'.70 E

38° 37'.21 S 147° 40'.97 E

38° 20'.65 S 147° 13'.94 E.

AUV operations will be undertaken at various locations within the survey area.

Mariners are advised to navigate with caution in the area.

**Chart temporarily affected - Aus 357 - Aus 802****128(T)/2026 AUSTRALIA - VICTORIA - Ninety Mile Beach - Survey operations**

EGS Survey Pty Ltd , Safe Transport Victoria Notice 74(T)/2026

Vessels *PMG Emerald* and *Investigator*, with a 500m towed array, are conducting survey operations in an area bounded by the following positions:

39° 09'.53 S 147° 53'.77 E

38° 48'.17 S 148° 14'.91 E

38° 23'.05 S 147° 10'.92 E

38° 35'.90 S 146° 55'.71 E.

The vessels will display appropriate lights and shapes and monitor VHF Ch 16.

Mariners are advised to navigate with caution in the area. 1000m clearance requested.

**Chart temporarily affected - Aus 181 - Aus 357 - Aus 802**

**129(T)/2026 AUSTRALIA - VICTORIA - Port Campbell - Scientific instruments southwestwards**  
Amplitude Energy

Subsurface scientific instruments exist on the seabed in the following positions:

38° 47'.61 S 142° 38'.15 E  
38° 47'.55 S 142° 39'.84 E  
38° 47'.40 S 142° 43'.98 E.

Mariners are advised to navigate with caution in the area. 500m clearance requested.

**Chart temporarily affected - Aus 349**

**130(T)/2026 AUSTRALIA - VICTORIA - Port Phillip - Limeburners Point - Light beacon unlit**  
Parks Victoria Notice 018(T)/2026

The light beacon, *Fl.R.3s* (38° 08'.57 S 144° 23'.14 E), is unlit.

Mariners are advised to navigate with caution in the area.

**Chart temporarily affected - Aus 157**

**131(T)/2026 AUSTRALIA - VICTORIA - Port Phillip - South Channel - Light beacon restored**  
*Former Notice - 379(T)/2025 is cancelled*  
Ports Victoria Notice 72(T)/2026

Cancel this notice on receipt.

**Chart formerly affected - Aus 143 - Aus 144 - Aus 4709 (INT 709)**

**132(T)/2026 AUSTRALIA - VICTORIA - Port Phillip - South Channel - Obstruction**  
Ports Victoria Notice 72(T)/2026

An obstruction marked by a north cardinal virtual AIS exists in position 38° 17'.71 S 144° 41'.15 E.

**Chart temporarily affected - Aus 143 - Aus 144**

**133(T)/2026 SOLOMON ISLANDS - Florida Islands - Nggela Sule - Tuituhi Point - Light beacon unlit**  
Solomon Islands Maritime Authority Notice 1(T)/2026

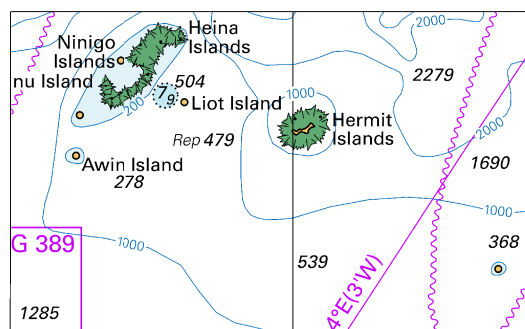
The light beacon, *Fl(3)20s 10m 10M* (9° 08'.57 S 160° 13'.74 E), is unlit.

**Chart temporarily affected - SLB 201 - SLB 304**

## HYDROGRAPHIC REPORTS

<i>Locality</i>	<i>Report</i>	<i>Ship/Authority</i>	<i>Observer</i>
VIC- Ninety Mile Beach	Wreck		S Saville

To accompany Australian Notice to Mariners 87/2026

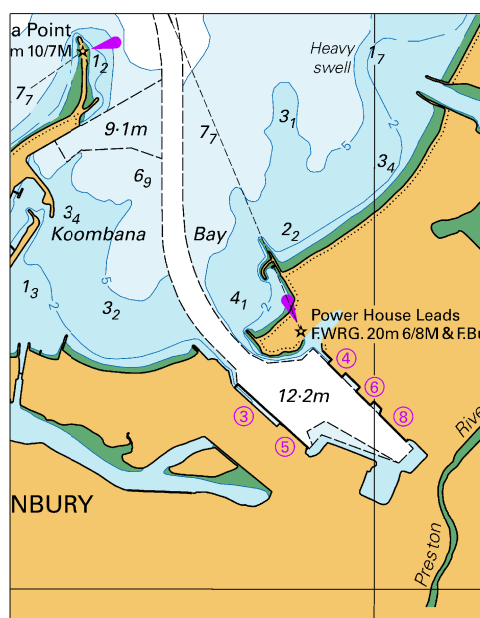


Block for chart Aus 4603 (69.2 x 42.1mm)

© Commonwealth of Australia 2026



To accompany Australian Notice to Mariners 94/2026

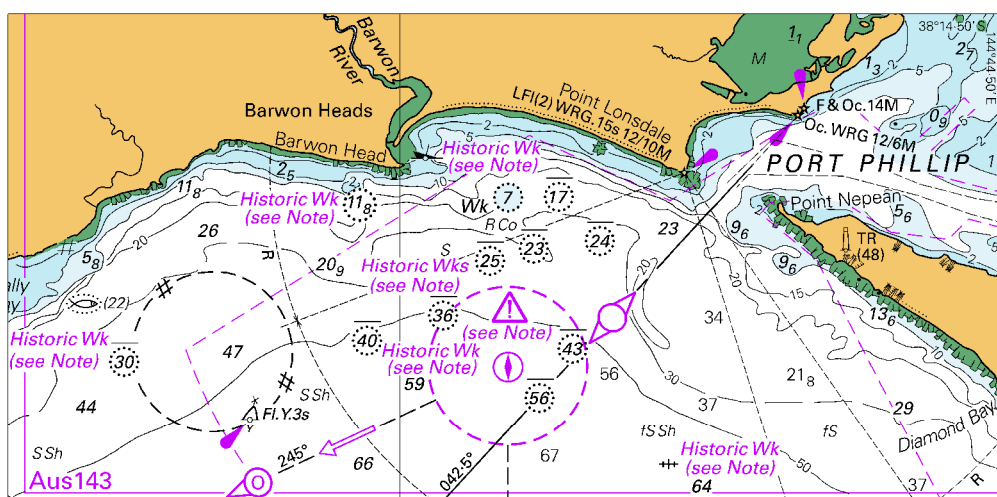


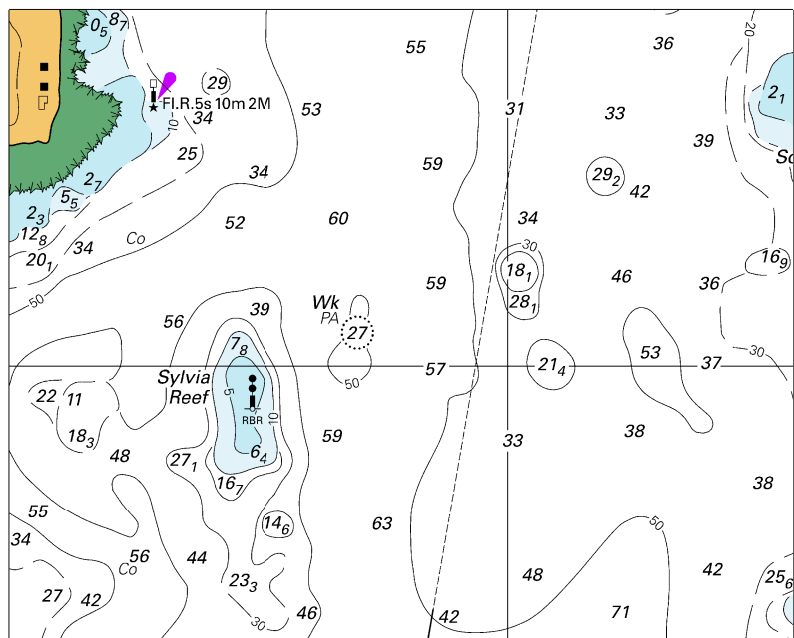
Block for chart Aus 115

(63.1 x 80.8mm)

© Commonwealth of Australia 2026

To accompany Australian Notice to Mariners 100/2026

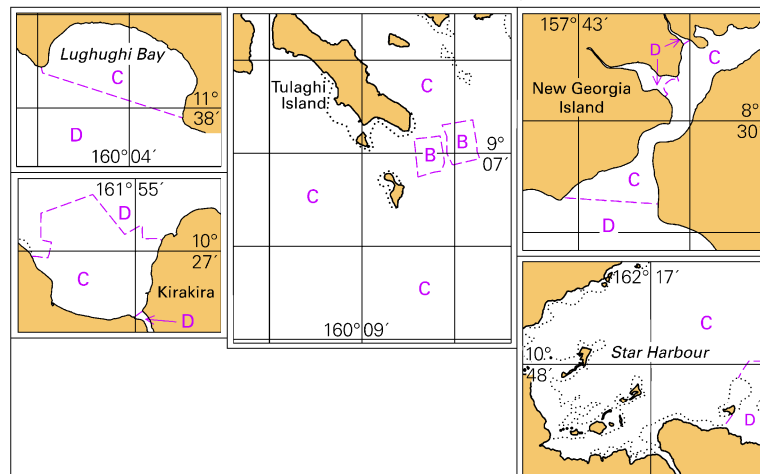




Block for chart SLB 103 © Commonwealth of Australia 2026

(103.6 x 83.3mm)

Zone of Confidence (ZOC) Diagram



Block for chart SLB 103 © Commonwealth of Australia 2026

(100.5 x 62.8mm)