



AUSTRALIAN NOTICES TO MARINERS

Notices 456 - 500

Published fortnightly by the Australian Hydrographic Office

Australian Notices to Mariners are the authority for correcting charts and publications published by the Australian Hydrographic Office covering Australia, Papua New Guinea, Solomon Islands, Australian Antarctic Territory and Timor-Leste.

Commodore D.G. MULLINS, RAN
Hydrographer of Australia

SECTIONS.

- I. **Australian Notices to Mariners, including blocks and notes.**
- II. **Hydrographic Reports.**

SUPPLEMENTS.

- I. **Tracings**
 - II. **Cumulative List of Australian Notices to Mariners.**
 - III. **Cumulative List of Temporary and Preliminary Australian Notices to Mariners.**
 - IV. **Temporary and Preliminary Notices in force.**
-
-

© Commonwealth of Australia 2026

This work is copyright. Apart from any use permitted under the Copyright Act 1968, no part may be reproduced by any process, adapted, communicated or commercially exploited without prior written permission from The Commonwealth represented by the Australian Hydrographic Office.

IMPORTANT NOTICE

This edition of Notices to Mariners includes all navigationally significant information affecting AHO products which the AHO has become aware of since the last edition. All reasonable efforts have been made to ensure the accuracy and completeness of the information, including third party information, on which these updates are based. The AHO regards third parties from which it receives information as reliable, however the AHO cannot verify all such information and errors may therefore exist. The AHO does not accept liability for errors in third party information.

GENERAL INSTRUCTIONS

The substance of these notices should be inserted on the charts affected.

Bearings are referred to the true compass and are reckoned clockwise from North; those relating to lights are given as seen by an observer from seaward.

Positions quoted in notices relate to WGS84 which is the horizontal datum for all charts produced by the Australian Hydrographic Office.

The range quoted for a light is its nominal range.

Depths are with reference to the chart datum of each chart. Heights are above mean high water springs or mean higher high water, as appropriate.

The capital letter (P) or (T) after the number of any notice denotes a preliminary or temporary notice respectively, which are contained separately at the end of the permanent notices.

REPORTING OF DANGERS

Mariners are particularly requested to notify the AUSTRALIAN HYDROGRAPHIC OFFICE, Locked Bag 8801 Wollongong, NSW 2500 (e-mail datapcentre@hydro.gov.au or, alternatively by filling in and submitting the [Hydrographic Notes](#) forms located on the web site – www.hydro.gov.au), immediately on the discovery of new dangers or suspected dangers to navigation. For changes or defects in aids to navigation notify AusSAR (Fax 02-6230 6868 or email rccaus@amsa.gov.au).

AUTHORISED USE

Copies of Australian notices are available free of charge from the Australian Hydrographic Office (AHO) website (www.hydro.gov.au) and through the eNotices (email) service (www.hydro.gov.au/enotices/enotices.htm).

Individual Notices may be copied for the purpose of inserting Notice substance on official charts and publications. Paper copies may be printed by chart agents and distributed to customers on a cost recovery basis. Participating chart agents are listed on the AHO website as providing a 'Paper Notices to Mariners' service (www.hydro.gov.au/prodserv/agents-list.htm). Copies of the notices may not be sold for profit without prior written agreement.

NUMERICAL INDEX OF NOTICES TO MARINERS

Edition No 11

Notices	Aus Chart, INT Chart, ENC Cell, AHP, BA Pubs
456	Aus 120, 324, 4060, INT 60
457	Products - New Charts and New Editions to be published shortly
458	AusTides 2026
459	Australia's Transition to S-100 Universal Hydrographic Data Model
460	Aus 207
461	Aus 826
462	Aus 251, 824
463	Aus 245
464	Aus 236, 814, 815, 4602, INT 602
465	Aus 25, 26
466	Aus 310
467	Aus 4603, INT 603
468	Aus 119
469	Aus 319, 4722, INT 722
470	Aus 328, 742, 4723, INT 723
471	Aus 53
472	Aus 55
473	Aus 604
474	Aus 357
475	SLB 101
476(T)	Aus 489, 4060, 4601, 4602, INT 60, 601, 602
477(T)	Aus 198, 489, 808, 4060, 4601, 4602, INT 60, 601, 602
478(T)	Aus 4, 301
479(T)	Aus 4060, 4602, 4604, INT 60, 602, 604
480(T)	Aus 309, 315, 316, 318
481(T)	Aus 310, 311
482(T)	Aus 311, 315
483(T)	Aus 112, 754
484(T)	Aus 320, 730, 4603, 4722, INT 603, 722
485(T)	Aus 319
486(T)	Aus 400, 608, 4060, 4070, 4071, 4708, INT 60, 70, 71, 708
487(T)	Aus 332
488(T)	Aus 65, 327, 742
489(T)	Aus 328
490(T)	Aus 328, 329, 744
491(T)	Aus 64
492(T)	Aus 112
493(T)	Aus 314, 319, 322, 400, 608, 920, 4603, 4708, 4722, 4723, INT 603, 708, 722, 723
494(T)	Aus 322, 400, 608, 4060, 4070, 4071, 4603, 4708, 4722, 4723, INT 60, 70, 71, 603, 708, 722, 723
495(T)	Aus 120, 341, 342
496(T)	Aus 349
497(T)	Aus 155
498(T)	Aus 349, 487, 4601, 4709, INT 601, 709
499(T)	Aus 487
500(T)	Aus 792

NUMERICAL INDEX OF CHARTS AFFECTED

Edition No 11

Aus Chart	Notices
Aus 4	478(T)
Aus 25	465
Aus 26	465
Aus 53	471
Aus 55	472
Aus 64	491(T)
Aus 65	488(T)
Aus 112	483(T), 492(T)
Aus 119	468
Aus 120	456, 495(T)
Aus 155	497(T)
Aus 198	477(T)
Aus 207	460
Aus 236	464
Aus 245	463
Aus 251	462
Aus 301	478(T)
Aus 309	480(T)
Aus 310	466, 481(T)
Aus 311	481(T), 482(T)
Aus 314	493(T)
Aus 315	480(T), 482(T)
Aus 316	480(T)
Aus 318	480(T)
Aus 319	469, 485(T), 493(T)
Aus 320	484(T)
Aus 322	493(T), 494(T)
Aus 324	456
Aus 327	488(T)
Aus 328	470, 489(T), 490(T)
Aus 329	490(T)
Aus 332	487(T)
Aus 341	495(T)
Aus 342	495(T)
Aus 349	496(T), 498(T)
Aus 357	474
Aus 400	486(T), 493(T), 494(T)
Aus 487	498(T), 499(T)
Aus 489	476(T), 477(T)
Aus 604	473
Aus 608	486(T), 493(T), 494(T)
Aus 730	484(T)
Aus 742	470, 488(T)
Aus 744	490(T)
Aus 754	483(T)
Aus 792	500(T)
Aus 808	477(T)
Aus 814	464
Aus 815	464
Aus 824	462
Aus 826	461
Aus 920	493(T)
Aus 4060	456, 476(T), 477(T), 479(T), 486(T), 494(T)
Aus 4070	486(T), 494(T)

Aus Chart	Notices
Aus 4071	486(T), 494(T)
Aus 4601	476(T), 477(T), 498(T)
Aus 4602	464, 476(T), 477(T), 479(T)
Aus 4603	467, 484(T), 493(T), 494(T)
Aus 4604	479(T)
Aus 4708	486(T), 493(T), 494(T)
Aus 4709	498(T)
Aus 4722	469, 484(T), 493(T), 494(T)
Aus 4723	470, 493(T), 494(T)
SLB 101	475

INT Chart	Notices
INT 60	456, 476(T), 477(T), 479(T), 486(T), 494(T)
INT 70	486(T), 494(T)
INT 71	486(T), 494(T)
INT 601	476(T), 477(T), 498(T)
INT 602	464, 476(T), 477(T), 479(T)
INT 603	467, 484(T), 493(T), 494(T)
INT 604	479(T)
INT 708	486(T), 493(T), 494(T)
INT 709	498(T)
INT 722	469, 484(T), 493(T), 494(T)
INT 723	470, 493(T), 494(T)

456 AUSTRALIA - Products - New Charts, New Editions, Withdrawn Charts

Australian Hydrographic Office

New Charts

<i>Chart</i>	<i>Title and Geographical limits</i>	<i>Scale</i>	<i>Publication Date</i>	<i>Remarks</i>
NIL				

New Editions and Withdrawn Charts

<i>Chart</i>	<i>Title</i>	<i>Scale</i>	<i>Publication Date</i>	<i>Remarks</i>
Aus 120 (Edition 2)	Australia - South Coast - South Australia - Approaches to Thevenard Plan: Murat Bay	1:75 000 1:37 500	29/5/2026	New edition with general updating throughout; including new bathymetric data. Chart Aus 120 Edition 1 dated 20 April 2012 is now superseded and must be withdrawn from use.
Aus 324 (Edition 2)	Australia - North West Coast - Western Australia - Lacepede Islands to Eighty Mile Beach	1:300 000	29/5/2026	New edition with general updating throughout; including new bathymetric data. Produced with blue contours. Chart Aus 324 Edition 1 dated 13 August 2010 is now superseded and must be withdrawn from use.
Aus 4060 (INT 60) (Edition 4)	Australasia and Adjacent Waters	1:10 000 000	29/5/2026	New edition with general updating throughout; including updates to magnetic variations. Chart Aus 4060 Edition 3 dated 17 September 2004 is now superseded and must be withdrawn from use.

New Electronic Navigation Chart (Aus ENC)

<i>Cell Name</i>	<i>Title</i>	<i>Publication Date</i>	<i>Remarks</i>
NIL			

New S100 Products

<i>Cell Name</i>	<i>Title</i>	<i>Publication Date</i>	<i>Remarks</i>
NIL			

Chart permanently withdrawn

Charts listed above as withdrawn no longer meet chart carriage requirements and should be marked as "superseded" and replaced with the new chart/ new edition listed prior to passage through the area covered by the new chart.

When placing orders with a chart agent between notice of forthcoming edition and its publication, mariners should advise whether their order pertains to the current edition or the new edition.

For further details refer to the AHO website at www.hydro.gov.au for new edition and new chart stock arrival information.

457 AUSTRALIA - Products - New Charts and New Editions to be published shortly

Australian Hydrographic Office

New Charts to be published shortly

<i>Chart</i>	<i>Title</i>	<i>Scale</i>	<i>Remarks</i>
NIL			

New Editions to be published shortly

<i>Chart</i>	<i>Title</i>	<i>Scale</i>	<i>Remarks</i>
NIL			

458 AUSTRALIA - AusTides 2026

Australian Hydrographic Office

AusTides version 2.1.2 has been released. Version 2.1.1 has been officially withdrawn.

Version 2.1.2 comes with a branding update, to reflect the AHO's latest logo. This new version also rectifies an issue where returning to map view would reset to the default screen, instead of the user's most recent field-of-view.

An additional fix has been applied to the Linux edition, to improve compatibility across distributions.

Please visit <https://www.hydro.gov.au/software/products/downloads.htm> to download version 2.1.2 for free.

459 AUSTRALIA - Australia's Transition to S-100 Universal Hydrographic Data Model

Australian Hydrographic Office

The International Hydrographic Organization's (IHO) **S-100 Universal Hydrographic Data Model** is a new, modern standard for maritime products and services, set to be adopted in 2026. This framework is based on modern ISO geospatial standards and will eventually replace the older S-57 standard.

S-101 will be the new product specification for Electronic Navigational Charts (ENCs). From 2029, it will operate alongside S-57 products on "Dual Fuel" ECDIS (Electronic Chart Display and Information Systems) during a transition period.

Beyond S-101, the S-100 framework allows for additional, interoperable product layers that can enhance ENCs. Notable examples include:

S-102: Bathymetric Surface

S-104: Water Levels

S-111: Surface Currents

Operational Rollout

The AHO aim to release in June 2026, the following products;

101AU005BTB01, 101AU00434151, 101AU00435151

102AU006BTB01, 101AU006BTB02, 101AU006KUR01

104AU00_BotanyBay_YYYYMMDD_YYYYMMDD (36 files for 2026 covering Botany Bay – based on Astronomical Predictions)

S-100 coverage will continue to expand in the coming years until S-101 ENC coverage fully replicates its equivalent S-57 portfolio. The IMO (International Maritime Organization) is expected to officially sunset the S-57 standard once there is comprehensive, worldwide S-101 coverage.

For more information, please refer to [Australian Hydrographic Office - S-100: Next Generation Maritime Products and Services](#)

460 AUSTRALIA - NEW SOUTH WALES - Newcastle - Stockton Channel - Wreck

Port of Newcastle

Aus 207 [809/2025]Replace wreck depth, 2₇m, with wreck depth, 2₄m

32° 54'.17 S

151° 46'.97 E

461 AUSTRALIA - QUEENSLAND - Abbot Point - Clark Shoal - Light beacon

UKHO

Aus 826 [NE 15/5/2026]

Amend structure colour to BYB

19° 51'.0 S

148° 03'.8 E

462 AUSTRALIA - QUEENSLAND - Cumberland Islands - Cockermouth Island - Depth northwards

Australian Hydrographic Office

Aus 251 [1040/2023]Insert depth, 17₂m, enclosed by contour

20° 43'.18 S

149° 24'.44 E

Aus 824 [1062/2025]Insert depth, 17₂m, enclosed by contour

20° 43'.18 S

149° 24'.44 E

463 AUSTRALIA - QUEENSLAND - Gladstone - Facing Island - Depths

Australian Hydrographic Office

Aus 245 [319/2026]Insert [accompanying block A](#)
[accompanying block B](#)

23° 45'.7 S

151° 22'.3 E

23° 47'.7 S

151° 21'.6 E

464 AUSTRALIA - QUEENSLAND - Point Cartwright to Lord Howe Rise - Submarine cable

Former Notice - 944(T)/2025 is cancelled
 Gulf Agency Company (Australia)

Aus 236 [320/2026]

Insert submarine cable, between

26° 39'.43 S	153° 06'.62 E
26° 39'.36 S	153° 06'.78 E
26° 39'.24 S	153° 06'.92 E
26° 39'.04 S	153° 07'.08 E
26° 38'.74 S	153° 07'.21 E
26° 38'.73 S	153° 07'.21 E
26° 38'.31 S	153° 07'.51 E
26° 38'.30 S	153° 16'.94 E
26° 38'.76 S	153° 17'.60 E
26° 39'.59 S	153° 19'.03 E
26° 40'.89 S	153° 20'.17 E
26° 42'.31 S	153° 21'.02 E
26° 45'.91 S	153° 23'.42 E
26° 47'.57 S	153° 25'.12 E
26° 50'.70 S	153° 29'.14 E
26° 52'.40 S	153° 32'.36 E
26° 53'.19 S	153° 34'.70 E

submarine cable, between

Aus 814 [859/2025]

Insert submarine cable, between

26° 55'.40 S	153° 41'.25 E
26° 56'.68 S	153° 45'.20 E
26° 57'.81 S	153° 50'.43 E
26° 57'.93 S	153° 56'.25 E
26° 59'.29 S	154° 07'.39 E

Aus 815 [186/2026]

Insert submarine cable, between

26° 39'.44 S	153° 06'.62 E
26° 39'.19 S	153° 06'.98 E
26° 38'.28 S	153° 07'.52 E
26° 37'.39 S	153° 08'.32 E
26° 37'.02 S	153° 08'.93 E
26° 36'.57 S	153° 09'.22 E
26° 36'.23 S	153° 09'.79 E
26° 37'.06 S	153° 12'.67 E
26° 37'.72 S	153° 15'.90 E
26° 39'.59 S	153° 19'.03 E
26° 40'.97 S	153° 20'.20 E
26° 45'.92 S	153° 23'.41 E
26° 47'.57 S	153° 25'.12 E
26° 50'.70 S	153° 29'.14 E
26° 52'.44 S	153° 32'.40 E
26° 56'.68 S	153° 45'.20 E
26° 57'.81 S	153° 50'.43 E
26° 57'.93 S	153° 56'.25 E
26° 58'.75 S	154° 02'.99 E

Aus 4602 (INT 602) [NE 15/5/2026]

Insert submarine cable, between

26° 39'.2 S	153° 06'.9 E
26° 36'.3 S	153° 09'.8 E
26° 38'.2 S	153° 17'.4 E
26° 50'.4 S	153° 28'.1 E
26° 58'.0 S	153° 50'.4 E
27° 03'.4 S	154° 45'.1 E
27° 12'.8 S	155° 21'.0 E
27° 50'.7 S	156° 00'.8 E
27° 59'.0 S	156° 25'.6 E
28° 23'.0 S	157° 16'.4 E
28° 40'.2 S	157° 25'.4 E
28° 44'.2 S	157° 33'.1 E
28° 30'.1 S	157° 56'.4 E
26° 44'.9 S	161° 22'.4 E

465	AUSTRALIA - NORTHERN TERRITORY - Darwin - Hudson Creek - Coastline		
Darwin Port			
Aus 25	[1019/2025]		
Insert	accompanying block	12° 28'.6 S	130° 55'.7 E
Aus 26	[1068/2025]		
Insert	accompanying block	12° 28'.6 S	130° 55'.7 E
466	AUSTRALIA - TIMOR SEA - Evans Shoal - Scientific instrument southeastwards		
Australian Institute of Marine Science			
Aus 310	[1021/2025]		
Insert	special spar light buoy, Q. Y, with topmark	10° 19'.35 S	129° 57'.11 E
467	INDONESIA - Kola - Wreck		
UKHO Notice 19/2119/2026			
Aus 4603 (INT 603)	[322/2026]		
Insert	dangerous wreck, centred on	5° 22'.7 S	134° 16'.1 E
468	AUSTRALIA - WESTERN AUSTRALIA - Esperance - Depths, dredge area		
Southern Ports Authority - Port of Esperance			
Aus 119 (Esperance)	[NE 20/3/2026]		
Insert	accompanying block	33° 52'.1 S	121° 53'.9 E
469	AUSTRALIA - WESTERN AUSTRALIA - Eugene McDermott Shoal - Submarine cable; lit platform		
Alcatel Submarine Networks , Shell Australia			
Aus 319	[139/2026]		
Insert	submarine cable, between	13° 26'.46 S	124° 35'.30 E
		13° 26'.09 S	124° 35'.41 E
		13° 15'.96 S	124° 32'.27 E
		13° 14'.10 S	124° 31'.56 E
		13° 11'.64 S	124° 30'.91 E
		12° 57'.91 S	124° 26'.60 E
	lit platform with legend, <i>Crux Mo(U)15s 10M</i>	12° 57'.86 S	124° 26'.55 E
Delete	depth, 166m	12° 57'.9 S	124° 26'.7 E
Aus 4722 (INT 722)	[322/2026]		
Insert	submarine cable, between	13° 26'.5 S	124° 35'.3 E
		12° 57'.9 S	124° 26'.6 E
	lit platform with legend, <i>Crux</i>	12° 57'.9 S	124° 26'.5 E
470	AUSTRALIA - WESTERN AUSTRALIA - Montebello Islands - Wells; pipeline; petroleum safety zones; platform northwestwards		
NOPSEMA			
Aus 328	[420/2026]		
Insert	accompanying block	19° 59'.0 S	114° 54'.0 E
Aus 742	[191/2026]		
Insert	supply pipeline, between	20° 05'.75 S	115° 05'.51 E
		20° 06'.25 S	115° 04'.00 E
	depth, 174m, enclosed by danger circle with legend, <i>Well</i> , centred on	20° 05'.65 S	115° 05'.75 E
	restricted area with radius 0.35M, centred on	20° 05'.65 S	115° 05'.75 E
Aus 4723 (INT 723)	[192/2026]		
Insert	lit platform, centred on	19° 52'.7 S	114° 36'.5 E

471 AUSTRALIA - WESTERN AUSTRALIA - Port Hedland - Depths

Department of Transport WA , Precision Hydrographic Services

Aus 53 [NE 17/4/2026]

Insert	depth, <i>4₈m</i> , and extend contour N to enclose	20° 19'.84 S	118° 35'.16 E
Replace	depth, <i>9₉m</i> , and enclosing contour with depth, <i>10₁m</i>	20° 13'.7 S	118° 33'.6 E
Delete	depth, <i>10₄m</i>	20° 13'.7 S	118° 33'.4 E
	depth, <i>10₂m</i>	20° 13'.9 S	118° 33'.8 E
	depth, <i>6₁m</i>	20° 19'.8 S	118° 35'.2 E

Aus 53 (Hunt Point) [NE 17/4/2026]

Replace	drying height, <i>0₂m</i> , with drying height, <i>0₈m</i>	20° 18'.09 S	118° 35'.24 E
---------	--	--------------	---------------

472 AUSTRALIA - WESTERN AUSTRALIA - Port Walcott - Pelican Rocks - Depths

Australian Hydrographic Office

Aus 55 [325/2026]

Insert	accompanying block A	20° 38'.5 S	117° 14'.7 E
	accompanying block B	20° 38'.5 S	117° 21'.7 E

473 SOUTHERN OCEAN - Macquarie Island - South East Reef - Island

Geoscience Australia

Aus 604 [439/2024]

Delete	island, centred on	54° 47'.1 S	158° 50'.9 E
--------	--------------------	-------------	--------------

474 AUSTRALIA - VICTORIA - Seven Mile Beach - Well eastwards

Hibiscus Petroleum

Aus 357 [97/2026]

Delete	depth, <i>37m</i> , and enclosing danger circle with legend, Well	38° 12'.4 S	147° 37'.2 E
--------	---	-------------	--------------

475 SOLOMON ISLANDS - Lungga Roads - Honiara - Depths

Australian Hydrographic Office

SLB 101 (Lungga Roads) [784/2025]

Insert	accompanying block A	9° 25'.74 S	159° 57'.62 E
--------	--------------------------------------	-------------	---------------

SLB 101 (Honiara) [784/2025]

Insert	accompanying block B	9° 25'.61 S	159° 57'.40 E
--------	--------------------------------------	-------------	---------------

476(T)/2026 AUSTRALIA - NEW SOUTH WALES - QUEENSLAND - Sydney to Brisbane - Cable laying operations completed eastwards

Former Notice - 245(T)/2026 is cancelled
Gulf Agency Company (Australia)

Cancel this notice on receipt.

Chart formerly affected - Aus 489 - Aus 4060 (INT 60) - Aus 4601 (INT 601) - Aus 4602 (INT 602)

477(T)/2026 AUSTRALIA - NEW SOUTH WALES - Sydney to Eden - Cable laying operations completed eastwards

Former Notice - 246(T)/2026 is cancelled
Gulf Agency Company (Australia)

Cancel this notice on receipt.

Chart formerly affected - Aus 198 - Aus 489 - Aus 808 - Aus 4060 (INT 60) - Aus 4601 (INT 601) - Aus 4602 (INT 602)

478(T)/2026 AUSTRALIA - QUEENSLAND - Amrun Wharf - Dredging operations; exclusion zone; anchorage; pilot boarding place

Maritime Safety Queensland Notice 279(T)/2026, 280(T)/2026

Dredges Juan Sebastian de Elcano and J.F.J. De Nul, and support vessels, are conducting dredging operations in an area bounded by the following positions:

12° 54'.59 S 141° 28'.21 E
12° 54'.93 S 141° 28'.21 E
12° 55'.43 S 141° 28'.55 E
12° 55'.63 S 141° 36'.76 E
12° 55'.34 S 141° 36'.92 E
12° 54'.13 S 141° 34'.77 E
12° 54'.14 S 141° 28'.51 E.

An exclusion zone exists around the dredging operations. Pilot vessels, Amrun tugs and piloted bulk carriers are exempt from the exclusion restrictions.

The pilot boarding place (12° 48'.90 S 141° 34'.80 E) has been temporarily relocated to position 12° 57'.15 S 141° 31'.53 E.

A temporary Southern Holding anchorage exists in position 12° 58'.41 S 141° 27'.27 E.

Mariners are advised to navigate with caution in the area.

Chart temporarily affected - Aus 4 - Aus 301

479(T)/2026 AUSTRALIA - CORAL SEA - Mellish Reef - Subsea operations westwards

Gulf Agency Company (Australia)

On or about 4 June 2026, vessel *Lodbrog* will begin cable maintenance works in the vicinity of position 17° 13'.44 S 154° 52'.12 E.

Mariners are advised to navigate with caution in the area.

Chart temporarily affected - Aus 4060 (INT 60) - Aus 4602 (INT 602) - Aus 4604 (INT 604)

480(T)/2026 AUSTRALIA - TIMOR SEA - Flat Top Bank - USV operations westwards

Department of Defence

During the period 8 to 19 June 2026, an Uncrewed Surface Vessel (USV) will be operating in an area bounded by the following positions:

13° 15'.0 S 128° 00'.0 E
12° 48'.0 S 129° 36'.0 E
12° 36'.0 S 129° 36'.0 E
11° 33'.0 S 128° 00'.0 E.

Mariners are advised to navigate with caution in the area.

Chart temporarily affected - Aus 309 - Aus 315 - Aus 316 - Aus 318

481(T)/2026 AUSTRALIA - TIMOR SEA - Margaret Harries Banks to Evans Shoal - Survey operations; tide gauges
Revelare Hydrospatial

Survey vessel *7-Oceans* is conducting survey operations in an area bounded by the following positions:

10° 08'.69 S 128° 45'.60 E
 9° 58'.78 S 129° 01'.45 E
 9° 45'.00 S 129° 30'.00 E
 9° 39'.00 S 130° 06'.00 E
 9° 39'.72 S 130° 10'.44 E
 10° 14'.81 S 129° 50'.96 E
 10° 32'.63 S 129° 27'.14 E
 10° 32'.73 S 129° 13'.62 E
 10° 26'.96 S 128° 57'.20 E.

Tide gauges marked by special light buoys, *Fl. Y. 1-5s*, exist in the following positions:

9° 54'.9 S 129° 33'.5 E
 9° 58'.1 S 129° 45'.7 E
 9° 59'.6 S 129° 56'.5 E
 10° 17'.9 S 129° 51'.3 E
 10° 18'.8 S 129° 44'.3 E
 10° 19'.1 S 129° 32'.2 E
 10° 19'.1 S 129° 19'.1 E
 10° 33'.5 S 129° 27'.6 E
 10° 33'.9 S 129° 12'.8 E
 10° 23'.1 S 129° 05'.9 E
 10° 29'.8 S 128° 55'.4 E
 10° 11'.1 S 128° 45'.6 E
 10° 11'.1 S 129° 01'.0 E
 9° 59'.4 S 129° 02'.4 E
 9° 52'.4 S 129° 18'.7 E
 10° 02'.8 S 129° 16'.9 E
 10° 08'.0 S 129° 32'.1 E
 10° 08'.0 S 129° 41'.3 E
 10° 37'.8 S 129° 27'.9 E
 10° 16'.1 S 129° 09'.4 E
 10° 10'.9 S 129° 36'.9 E.

Mariners are advised to navigate with caution in the area.

Chart temporarily affected - Aus 310 - Aus 311

482(T)/2026 AUSTRALIA - TIMOR SEA - The Boxers - Tide gauges westwards
Reach Subsea

Tide gauges marked by special light buoys, *Fl. Y. 5s*, exist in positions 11° 23'.20 S 127° 51'.30 E and 11° 19'.60 S 127° 21'.20 E.

Mariners are advised to navigate with caution in the area.

Chart temporarily affected - Aus 311 - Aus 315

483(T)/2026 AUSTRALIA - WESTERN AUSTRALIA - Centaur Reef - Light beacon restored

Former Notice - 437(T)/2026 is cancelled
Department of Transport WA Notice 6855/2026

Cancel this notice on receipt.

Chart formerly affected - Aus 112 - Aus 754

484(T)/2026 AUSTRALIA - WESTERN AUSTRALIA - Champagny Islands - Degerando Island - Light unlit

Department of Transport WA Notice 6871/2026

The light, *Fl(4)20s 37m 12M* (15° 20'.21 S 124° 11'.62 E), is unlit.

Chart temporarily affected - Aus 320 - Aus 730 - Aus 4603 (INT 603) - Aus 4722 (INT 722)

485(T)/2026 AUSTRALIA - WESTERN AUSTRALIA - Eugene McDermott Shoal - Steel truss
Former Notice - 1079(T)/2025 is cancelled
Shell Australia

Cancel this notice on receipt.

Chart formerly affected - Aus 319

486(T)/2026 AUSTRALIA - WESTERN AUSTRALIA - Indian Ocean - Christmas Island - Cable laying operations
Subcom

Cable laying operations are in progress between Perth and Christmas Island. Cable lay and post lay inspection activities will occur along the route shown in the diagram and mariners are advised to keep clear of vessel, *CS Resolute* during activities. Further advice on specific areas of activity will be issued through the AUSCOAST warning system.

Note: For e-notice users, please see full edition for map.

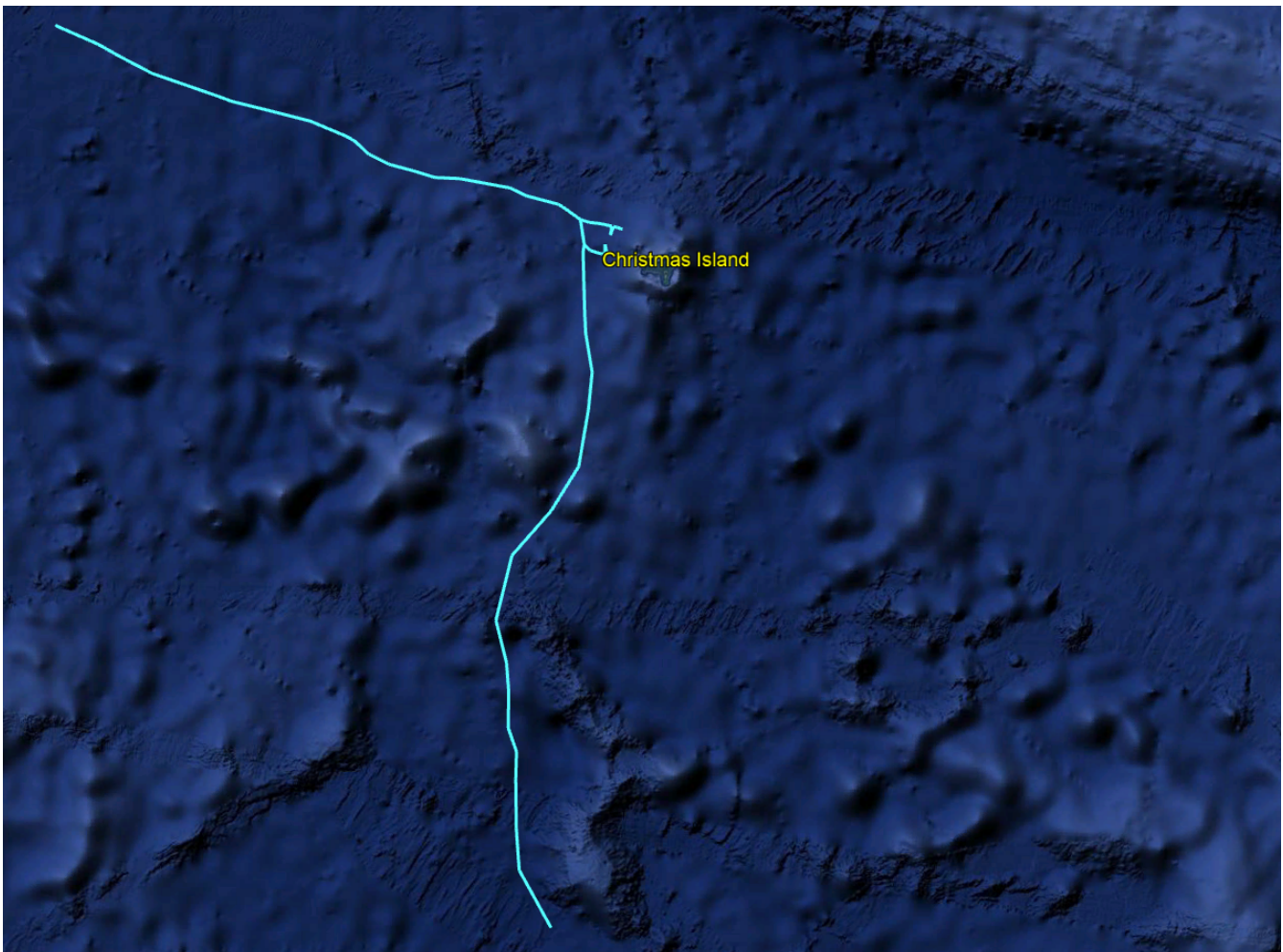


Chart temporarily affected - Aus 400 - Aus 608 - Aus 4060 (INT 60) - Aus 4070 (INT 70) - Aus 4071 (INT 71) - Aus 4708 (INT 708)

487(T)/2026 AUSTRALIA - WESTERN AUSTRALIA - Kalbarri - Survey operations northwards

Department of Transport WA Notice 6875/2026

MV *Inception II*, with a 130m towed array, is conducting survey operations in an area bounded by the coast and the following positions:

27° 18'.25 S 114° 00'.28 E

27° 20'.74 S 113° 54'.21 E

27° 27'.43 S 113° 57'.45 E

27° 25'.25 S 114° 03'.89 E.

The vessel will monitor VHF Ch 16.

Mariners are advised to navigate with caution in the area and keep well clear.

Chart temporarily affected - Aus 332**488(T)/2026 AUSTRALIA - WESTERN AUSTRALIA - Lowendal Islands - Varanus Island - Subsea operations northeastwards**

Santos

On or about 6 June 2026, vessel *Bhagwan Dryden* and support vessels will begin conducting subsea operations in the vicinity of position 20° 37'.71 S 115° 36'.512 E.

Mariners are advised to navigate with caution in the area. 500m clearance requested.

Chart temporarily affected - Aus 65 - Aus 327 - Aus 742**489(T)/2026 AUSTRALIA - WESTERN AUSTRALIA - Montebello Islands - Subsea operations completed**

Former Notice - 299(T)/2026 is cancelled

Australian Maritime Safety Authority

Cancel this notice on receipt.

Chart formerly affected - Aus 328**490(T)/2026 AUSTRALIA - WESTERN AUSTRALIA - Muiron Islands - Fish aggregating devices off station westwards**

Department of Transport WA Notice 6865/2026

The special light buoys, *Fl.Y.5s FAD (Mar-Sep)* (21° 36'.11 S 114° 01'.23 E, 21° 37'.85 S 114° 02'.49 E and 21° 38'.57 S 114° 06'.22 E), are off station.

Chart temporarily affected - Aus 328 - Aus 329 - Aus 744**491(T)/2026 AUSTRALIA - WESTERN AUSTRALIA - Onslow - Beadon Point - Light buoy unlit**

Department of Transport WA Notice 6870/2026

The port lateral light buoy, *Fl.R.3s* (21° 37'.38 S 115° 05'.77 E), is unlit.

Mariners are advised to navigate with caution in the area.

Chart temporarily affected - Aus 64**492(T)/2026 AUSTRALIA - WESTERN AUSTRALIA - Rottnest Island - Thomson Bay - Harbour works; dredging operations**

Department of Transport WA Notice 6876/2026

Construction works and dredging operations associated with the Marine Logistics Hub are in progress in the vicinity of position 32° 00'.01 S 115° 33'.02 E.

An exclusion zone marked by special buoys exists around the works.

Mariners are advised to navigate with caution in the area.

Chart temporarily affected - Aus 112

493(T)/2026 INDIAN OCEAN - Seringapatam Reef to Christmas Island - Geotechnical and geophysical operations completed

Former Notice - 348(T)/2026 is cancelled
EGS Survey Pty Ltd

Cancel this notice on receipt.

Chart formerly affected - Aus 314 - Aus 319 - Aus 322 - Aus 400 - Aus 608 - Aus 920 - Aus 4603 (INT 603) - Aus 4708 (INT 708) - Aus 4722 (INT 722) - Aus 4723 (INT 723)

494(T)/2026 INDIAN OCEAN - Seringapatam Reef to Christmas Island - Survey operations completed

Former Notice - 799(T)/2025 is cancelled
Gulf Agency Company (Australia)

Cancel this notice on receipt.

Chart formerly affected - Aus 322 - Aus 400 - Aus 608 - Aus 4060 (INT 60) - Aus 4070 (INT 70) - Aus 4071 (INT 71) - Aus 4603 (INT 603) - Aus 4708 (INT 708) - Aus 4722 (INT 722) - Aus 4723 (INT 723)

495(T)/2026 AUSTRALIA - SOUTH AUSTRALIA - Great Australian Bight - Satellite re-entry completed

Former Notice - 398(T)/2026 is cancelled
Southern Launch

Cancel this notice on receipt.

Chart formerly affected - Aus 120 - Aus 341 - Aus 342

496(T)/2026 AUSTRALIA - VICTORIA - Port Campbell - Obstruction southwestwards

Amplitude Energy

Anchor chain, marked by surface buoys, is being stored on the seabed in the vicinity of position 38° 47'.8 S 142° 36'.5 E.

Mariners are advised to avoid anchoring or trawling in the area.

Chart temporarily affected - Aus 349

497(T)/2026 AUSTRALIA - VICTORIA - Port Phillip - Brighton - Light buoy restored

Former Notice - 352(T)/2026 is cancelled
Parks Victoria Notice 274/2026

Cancel this notice on receipt.

Chart formerly affected - Aus 155

498(T)/2026 AUSTRALIA - BASS STRAIT - Cable laying operations

Gulf Agency Company (Australia)

Cable laying operations will be conducted in Bass Strait as part of the Talaylink cable system. Cable lay and post lay inspection activities will occur along the route shown in the diagram and mariners are advised to keep clear of vessel, *Dependable* during activities. Further advice on specific areas of activity will be issued through the AUSCOAST warning system.

Note: For e-notice users, please see full edition for map.



Chart temporarily affected - Aus 349 - Aus 487 - Aus 4601 (INT 601) - Aus 4709 (INT 709)

499(T)/2026 AUSTRALIA - BASS STRAIT - Light buoys

Delmar Systems

8 special light buoys, *Fl.3s*, exist within 1.5M radius of 39° 51'.73 S 145° 22'.50 E. 2.5M clearance requested.

Chart temporarily affected - Aus 487

500(T)/2026 AUSTRALIA - TASMANIA - Cape Sorell - Light buoy off station westwards

Marine and Safety Tasmania Notice M186(T)/2026

The light buoy, *Fl(5)Y.20s* (42° 11'.94 S 145° 03'.29 E), is off station.

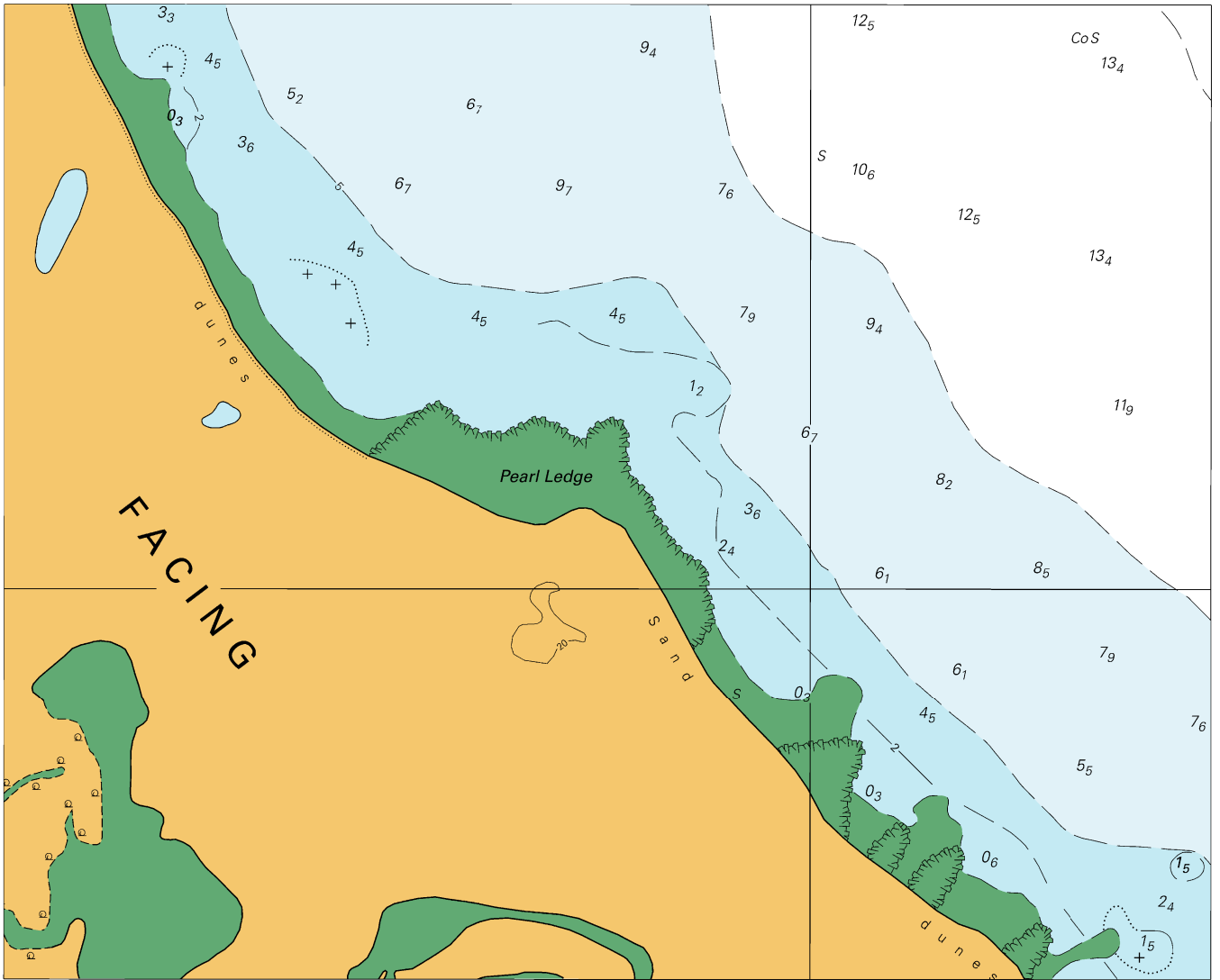
Chart temporarily affected - Aus 792

II

HYDROGRAPHIC REPORTS

NIL

To accompany Australian Notice to Mariners 463/2026

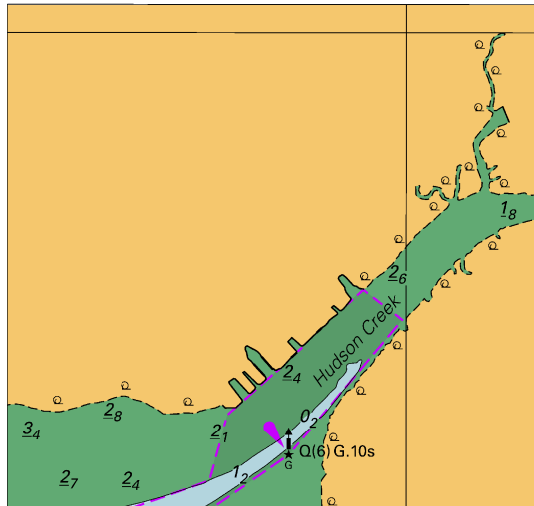


Block B for chart Aus 245

© Commonwealth of Australia 2026

(177.1 x 143.1mm)

To accompany Australian Notice to Mariners 465/2026

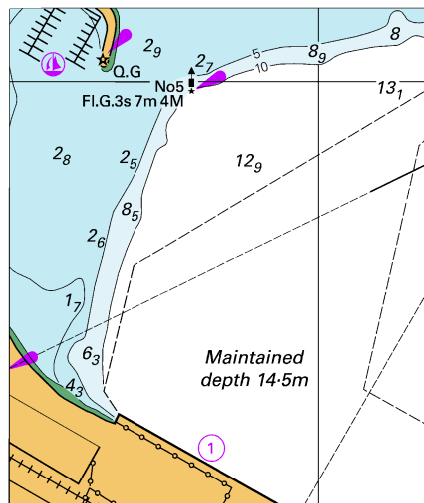


Block for chart Aus 25

(70.6 x 66.7mm)

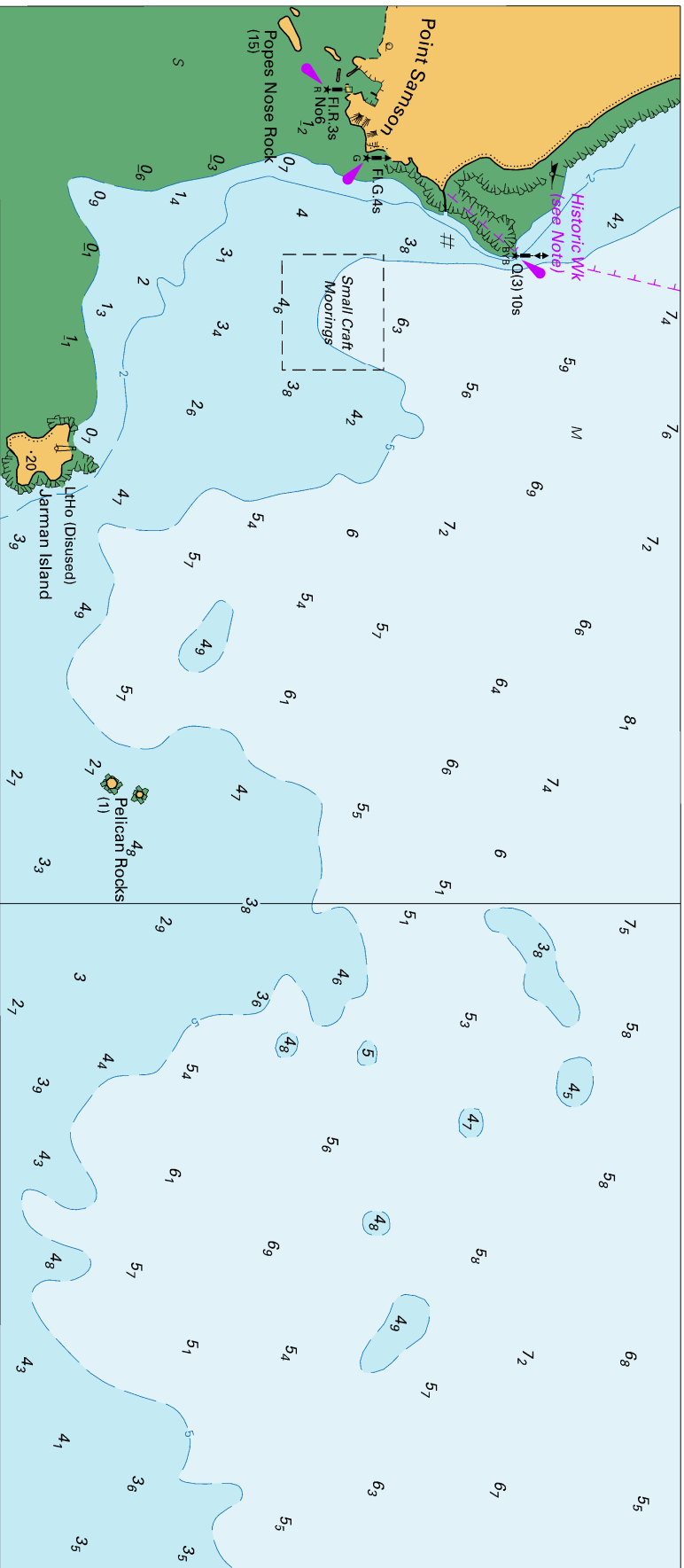
© Commonwealth of Australia 2026

To accompany Australian Notice to Mariners 468/2026



Block for chart Aus 119 (55.6 x 65.6mm)
© Commonwealth of Australia 2026

To accompany Australian Notice to Mariners 472/2026

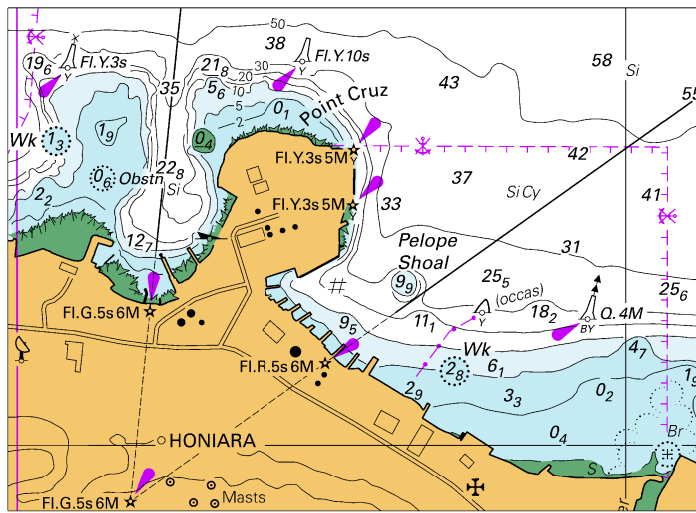


Block A for chart Aus 55

© Commonwealth of Australia 2026

(23400 x 101.5mm)

To accompany Australian Notice to Mariners 475/2026



Block A for chart SLB101

(91.8 x 66.4mm)

© Commonwealth of Australia 2026