



AUSTRALIAN NOTICES TO MARINERS

Notices 409 - 455

Published fortnightly by the Australian Hydrographic Office

Australian Notices to Mariners are the authority for correcting charts and publications published by the Australian Hydrographic Office covering Australia, Papua New Guinea, Solomon Islands, Australian Antarctic Territory and Timor-Leste.

Commodore D.G. MULLINS, RAN
Hydrographer of Australia

SECTIONS.

- I. **Australian Notices to Mariners, including blocks and notes.**
- II. **Hydrographic Reports.**

SUPPLEMENTS.

- I. **Tracings**
 - II. **Cumulative List of Australian Notices to Mariners.**
 - III. **Cumulative List of Temporary and Preliminary Australian Notices to Mariners.**
 - IV. **Temporary and Preliminary Notices in force.**
-
-

© Commonwealth of Australia 2026

This work is copyright. Apart from any use permitted under the Copyright Act 1968, no part may be reproduced by any process, adapted, communicated or commercially exploited without prior written permission from The Commonwealth represented by the Australian Hydrographic Office.

IMPORTANT NOTICE

This edition of Notices to Mariners includes all navigationally significant information affecting AHO products which the AHO has become aware of since the last edition. All reasonable efforts have been made to ensure the accuracy and completeness of the information, including third party information, on which these updates are based. The AHO regards third parties from which it receives information as reliable, however the AHO cannot verify all such information and errors may therefore exist. The AHO does not accept liability for errors in third party information.

GENERAL INSTRUCTIONS

The substance of these notices should be inserted on the charts affected.

Bearings are referred to the true compass and are reckoned clockwise from North; those relating to lights are given as seen by an observer from seaward.

Positions quoted in notices relate to WGS84 which is the horizontal datum for all charts produced by the Australian Hydrographic Office.

The range quoted for a light is its nominal range.

Depths are with reference to the chart datum of each chart. Heights are above mean high water springs or mean higher high water, as appropriate.

The capital letter (P) or (T) after the number of any notice denotes a preliminary or temporary notice respectively, which are contained separately at the end of the permanent notices.

REPORTING OF DANGERS

Mariners are particularly requested to notify the AUSTRALIAN HYDROGRAPHIC OFFICE, Locked Bag 8801 Wollongong, NSW 2500 (e-mail datacentre@hydro.gov.au or, alternatively by filling in and submitting the [Hydrographic Notes](#) forms located on the web site – www.hydro.gov.au), immediately on the discovery of new dangers or suspected dangers to navigation. For changes or defects in aids to navigation notify AusSAR (Fax 02-6230 6868 or email rccaus@amsa.gov.au).

AUTHORISED USE

Copies of Australian notices are available free of charge from the Australian Hydrographic Office (AHO) website (www.hydro.gov.au) and through the eNotices (email) service (www.hydro.gov.au/enotices/enotices.htm).

Individual Notices may be copied for the purpose of inserting Notice substance on official charts and publications. Paper copies may be printed by chart agents and distributed to customers on a cost recovery basis. Participating chart agents are listed on the AHO website as providing a 'Paper Notices to Mariners' service (www.hydro.gov.au/prodserv/agents-list.htm). Copies of the notices may not be sold for profit without prior written agreement.

NUMERICAL INDEX OF NOTICES TO MARINERS

Edition No 10

Notices	Aus Chart, INT Chart, ENC Cell, AHP, BA Pubs
409	Aus 826, 4074, 4601, 4602, 4604, 4709, 4710, 4714, INT 74, 601, 602, 604, 709, 710, 714
410	Aus 120, 324, 4060, INT 60
411	Australia's Transition to S-100 Universal Hydrographic Data Model
412	Aus 222
413	Aus 812
414	Aus 198
415	Aus 209
416	Aus 237
417	Aus 827
418	Aus 309, 311
419	Aus 59
420	Aus 328, 743, 744
421	Aus 112, 754
422	Aus 116
423	Aus 744
424	Aus 335, 755
425	Aus 143
426	Aus 143, 155
427	Aus 151
428	Aus 487
429(T)	Aus 209
430(T)	Aus 815, 817
431(T)	Aus 245
432(T)	Aus 236
433(T)	Aus 249, 250, 823, 824
434(T)	Aus 309, 314, 315, 316, 319
435(T)	Aus 309, 311, 312, 314, 315, 319, 321
436(T)	Aus 65, 327, 328, 742
437(T)	Aus 112, 754
438(T)	Aus 327
439(T)	Aus 327
440(T)	Aus 112, 117, 754
441(T)	Aus 328, 329, 744
442(T)	Aus 55, 326, 4722, 4723, INT 722, 723
443(T)	Aus 64
444(T)	Aus 64, 743, 744
445(T)	Aus 754
446(T)	Aus 116, 117, 754, 755
447(T)	Aus 754
448(T)	Aus 347
449(T)	Aus 134, 776
450(T)	Aus 357
451(T)	Aus 349
452(T)	Aus 349
453(T)	Aus 155, 157
454(T)	Aus 155, 157, 4060, INT 60
455(T)	Aus 155

NUMERICAL INDEX OF CHARTS AFFECTED

Edition No 10

Aus Chart	Notices
Aus 55	442(T)
Aus 59	419
Aus 64	443(T), 444(T)
Aus 65	436(T)
Aus 112	421, 437(T), 440(T)
Aus 116	422, 446(T)
Aus 117	440(T), 446(T)
Aus 120	410
Aus 134	449(T)
Aus 143	425, 426
Aus 151	427
Aus 155	426, 453(T), 454(T), 455(T)
Aus 157	453(T), 454(T)
Aus 198	414
Aus 209	415, 429(T)
Aus 222	412
Aus 236	432(T)
Aus 237	416
Aus 245	431(T)
Aus 249	433(T)
Aus 250	433(T)
Aus 309	418, 434(T), 435(T)
Aus 311	418, 435(T)
Aus 312	435(T)
Aus 314	434(T), 435(T)
Aus 315	434(T), 435(T)
Aus 316	434(T)
Aus 319	434(T), 435(T)
Aus 321	435(T)
Aus 324	410
Aus 326	442(T)
Aus 327	436(T), 438(T), 439(T)
Aus 328	420, 436(T), 441(T)
Aus 329	441(T)
Aus 335	424
Aus 347	448(T)
Aus 349	451(T), 452(T)
Aus 357	450(T)
Aus 487	428
Aus 742	436(T)
Aus 743	420, 444(T)
Aus 744	420, 423, 441(T), 444(T)
Aus 754	421, 437(T), 440(T), 445(T), 446(T), 447(T)
Aus 755	424, 446(T)
Aus 776	449(T)
Aus 812	413
Aus 815	430(T)
Aus 817	430(T)
Aus 823	433(T)
Aus 824	433(T)
Aus 826	409
Aus 827	417
Aus 4060	410, 454(T)
Aus 4074	409

Aus Chart	Notices
Aus 4601	409
Aus 4602	409
Aus 4604	409
Aus 4709	409
Aus 4710	409
Aus 4714	409
Aus 4722	442(T)
Aus 4723	442(T)

INT Chart	Notices
INT 60	410, 454(T)
INT 74	409
INT 601	409
INT 602	409
INT 604	409
INT 709	409
INT 710	409
INT 714	409
INT 722	442(T)
INT 723	442(T)

409 AUSTRALIA - Products - New Charts, New Editions, Withdrawn Charts

Australian Hydrographic Office

New Charts

Chart	Title and Geographical limits	Scale	Publication Date	Remarks
NIL				

New Editions and Withdrawn Charts

Chart	Title	Scale	Publication Date	Remarks
Aus 826 (Edition 4)	Australia - East Coast - Queensland - Bowen to Cape Bowling Green	1:150 000	15/5/2026	New edition with general updating throughout; including latest bathymetric data. Chart Aus 826 Edition 3 dated 4 July 2014 is now superseded and must be withdrawn from use.
Aus 4074 (INT 74) (Edition 3)	Southern Ocean - Cape Darnley to Tasmania	1:10 000 000	15/5/2026	New edition with general updating throughout; including updates to magnetic variations. Chart Aus 4074 Edition 2 dated 17 September 2004 is now superseded and must be withdrawn from use.
Aus 4601 (INT 601) (Edition 8)	South Pacific Ocean - Tasman Sea - New Zealand to South East Australia	1:3 500 000	15/5/2026	New edition with general updating throughout; including updates to magnetic variations. Chart Aus 4601 Edition 7 dated 16 September 2022 is now superseded and must be withdrawn from use.
Aus 4602 (INT 602) (Edition 9)	South Pacific Ocean - Tasman and Coral Seas - Australia to Northern New Zealand and Fiji	1:3 500 000	15/5/2026	New edition with general updating throughout; including updates to magnetic variations. Chart Aus 4602 Edition 8 dated 19 August 2022 is now superseded and must be withdrawn from use.
Aus 4604 (INT 604) (Edition 9)	South Pacific Ocean - Coral and Solomon Seas and Adjacent Seas	1:3 500 000	15/5/2026	New edition with general updating throughout; including updates to magnetic variations. Chart Aus 4604 Edition 8 dated 30 September 2022 is now superseded and must be withdrawn from use.

New Editions and Withdrawn Charts *(continued)*

<i>Chart</i>	<i>Title</i>	<i>Scale</i>	<i>Publication Date</i>	<i>Remarks</i>
Aus 4709 (INT 709) (Edition 7)	Southern Ocean - Australia - South Coast	1:3 500 000	15/5/2026	New edition with general updating throughout; including updates to magnetic variations. Chart Aus 4709 Edition 6 dated 22 July 2022 is now superseded and must be withdrawn from use.
Aus 4710 (INT 710) (Edition 3)	Indian Ocean - Cape Leeuwin to Southeast Indian Ridge	1:3 500 000	15/5/2026	New edition with general updating throughout; including updates to magnetic variations. Chart Aus 4710 Edition 2 dated 20 August 2004 is now superseded and must be withdrawn from use.
Aus 4714 (INT 714) (Edition 5)	Indian Ocean - Cocos (Keeling) Islands to Ile Saint Paul	1:3 500 000	15/5/2026	New edition with general updating throughout; including updates to magnetic variations. Chart Aus 4714 Edition 4 dated 18 March 2022 is now superseded and must be withdrawn from use.

New Electronic Navigation Chart (Aus ENC)

<i>Cell Name</i>	<i>Title</i>	<i>Publication Date</i>	<i>Remarks</i>
NIL			

New S100 Products

<i>Cell Name</i>	<i>Title</i>	<i>Publication Date</i>	<i>Remarks</i>
NIL			

Chart permanently withdrawn

Charts listed above as withdrawn no longer meet chart carriage requirements and should be marked as "superseded" and replaced with the new chart/ new edition listed prior to passage through the area covered by the new chart.

When placing orders with a chart agent between notice of forthcoming edition and its publication, mariners should advise whether their order pertains to the current edition or the new edition.

For further details refer to the AHO website at www.hydro.gov.au for new edition and new chart stock arrival information.

410 AUSTRALIA - Products - New Charts and New Editions to be published shortly

Australian Hydrographic Office

New Charts to be published shortly

<i>Chart</i>	<i>Title</i>	<i>Scale</i>	<i>Remarks</i>
NIL			

New Editions to be published shortly

<i>Chart</i>	<i>Title</i>	<i>Scale</i>	<i>Remarks</i>
Aus 120	Australia - South Coast - South Australia - Approaches to Thevenard	1:75 000	New edition with general updating throughout; including new bathymetric data.
Aus 324	Australia - North West Coast - Western Australia - Lacepede Islands to Eighty Mile Beach	1:300 000	New edition with general updating throughout; including new bathymetric data. Produced with blue contours.
Aus 4060 (INT 60)	Australasia and Adjacent Waters	1:10 000 000	New edition with general updating throughout; including updates to magnetic variations.

411 AUSTRALIA - Australia's Transition to S-100 Universal Hydrographic Data Model

Australian Hydrographic Office

The International Hydrographic Organization's (IHO) **S-100 Universal Hydrographic Data Model** is a new, modern standard for maritime products and services, set to be adopted in 2026. This framework is based on modern ISO geospatial standards and will eventually replace the older S-57 standard.

S-101 will be the new product specification for Electronic Navigational Charts (ENCs). From 2029, it will operate alongside S-57 products on "Dual Fuel" ECDIS (Electronic Chart Display and Information Systems) during a transition period.

Beyond S-101, the S-100 framework allows for additional, interoperable product layers that can enhance ENCs. Notable examples include:

S-102: Bathymetric Surface

S-104: Water Levels

S-111: Surface Currents

Operational Rollout

The AHO will release by 29 May 2026, the following products;

101AU005BTB01, 101AU00434151, 101AU00435151

102AU006BTB01, 101AU006BTB02, 101AU006KUR01

104AU00_BotanyBay_YYYYMMDD_YYYYMMDD (36 files for 2026 covering Botany Bay – based on Astronomical Predictions)

S-100 coverage will continue to expand in the coming years until S-101 ENC coverage fully replicates its equivalent S-57 portfolio. The IMO (International Maritime Organization) is expected to officially sunset the S-57 standard once there is comprehensive, worldwide S-101 coverage.

For more information, please refer to [Australian Hydrographic Office - S-100: Next Generation Maritime Products and Services](#)

412 AUSTRALIA - NEW SOUTH WALES - Clarence River - Topmark

Transport for NSW

Aus 222 [851/2025]

Delete topmark 29° 25'.23 S 153° 19'.12 E

413 AUSTRALIA - NEW SOUTH WALES - Coffs Harbour - Korffs Islet - Light

Transport for NSW

Aus 812 [898/2025]

Amend light to Q(3)10s 3M 30° 19'.0 S 153° 09'.4 E

414 AUSTRALIA - NEW SOUTH WALES - Port Hacking to Botany Bay - Light buoys

Transport for NSW

Aus 198 [NE 6/2/2026]Insert special cylindrical light buoy, *Fl. Y. 5s*, without topmark 33° 58'.767 S 151° 13'.533 E
special cylindrical light buoy, *Fl. Y. 5s*, without topmark 33° 59'.117 S 151° 13'.668 EAmend light buoy to *Fl. G. 5s* 34° 04'.28 S 151° 07'.38 E**415 AUSTRALIA - NEW SOUTH WALES - Port Stephens - Lights**

Transport for NSW

Aus 209 [854/2025]Amend light to *F. G* 32° 40'.15 S 152° 10'.10 E
light to *F. R* 32° 40'.16 S 152° 10'.08 E**416 AUSTRALIA - QUEENSLAND - Brisbane River - Quarries Reach - Light buoys**

Maritime Safety Queensland Notice 217/2026

Aus 237 (Upper Lytton Reach to Hamilton Reach) [814/2025]Insert special cylindrical light buoy, *Fl. Y. 2·5s*, without topmark 27° 26'.737 S 153° 05'.847 E
special cylindrical light buoy, *Fl. Y. 2·5s*, without topmark 27° 26'.819 S 153° 05'.480 E
special cylindrical light buoy, *Fl. Y. 2·5s*, without topmark 27° 26'.834 S 153° 05'.214 E**417 AUSTRALIA - QUEENSLAND - Cape Cleveland to Chilcott Rocks - Depths**

UKHO , Australian Hydrographic Office

Aus 827 [4/2026]Insert [accompanying block A](#) 18° 54'.0 S 146° 50'.0 E
[accompanying block B](#) 19° 07'.0 S 146° 58'.0 E
[accompanying ZOC diagram](#) 19° 22'.0 S 146° 41'.0 E**418 AUSTRALIA - TIMOR SEA - Magaret Harries Banks - Depths**

Australian Hydrographic Office

Aus 309 [972/2025]Insert depth, *29m*, enclosed by contour 10° 44'.27 S 128° 22'.47 E
depth, *35m*, enclosed by contour 10° 49'.10 S 128° 17'.94 E

Delete depth, 71m 10° 49'.5 S 128° 17'.9 E

Aus 311 [NE 14/11/2025]Insert depth, *48m*, enclosed by contour 10° 35'.98 S 128° 31'.64 E
depth, *29m*, enclosed by contour 10° 44'.27 S 128° 22'.47 E
depth, *35m*, enclosed by contour 10° 49'.10 S 128° 17'.94 E

Delete depth, 71m 10° 49'.5 S 128° 17'.9 E

419 AUSTRALIA - WESTERN AUSTRALIA - Dampier - King Bay - Light beacons

Survey Marine & Electronic Services

Aus 59 [274/2026]

Amend	light beacon to <i>Q & F.Bu (F Day)</i>	20° 37'.95 S	116° 45'.34 E
	light beacon to <i>Iso.4s & F.Bu (F Day)</i>	20° 37'.95 S	116° 45'.41 E

420 AUSTRALIA - WESTERN AUSTRALIA - Direction Island to Port of Ashburton - Depths; light beacons

UKHO

Aus 328 [192/2026]

Replace	depth, 2 ₅ m, with depth, 1 ₆ m	21° 34'.1 S	115° 03'.5 E
---------	-------------------------------------------------------	-------------	--------------

Aus 743 [15/2026]

Insert	depth, 11 ₃ m	21° 30'.83 S	115° 07'.84 E
	depth, 5 ₈ m	21° 35'.11 S	114° 56'.61 E

Replace	depth, 2 ₅ m, with depth, 1 ₆ m	21° 34'.1 S	115° 03'.5 E
	depth, 7 ₅ m, with depth, 5 ₁ m	21° 34'.4 S	115° 03'.3 E

Amend	light beacon to <i>Fl.R.3s R06</i>	21° 36'.1 S	115° 01'.7 E
	light beacon to <i>Fl.G.3s G08</i>	21° 38'.0 S	115° 01'.1 E

Delete	depth, 13 ₈ m	21° 30'.8 S	115° 07'.7 E
	depth, 6 ₉ m	21° 35'.2 S	114° 56'.8 E

Aus 744 [192/2026]

Insert	depth, 5 ₈ m	21° 35'.11 S	114° 56'.61 E
--------	-------------------------	--------------	---------------

Delete	depth, 6 ₉ m	21° 35'.2 S	114° 56'.8 E
--------	-------------------------	-------------	--------------

421 AUSTRALIA - WESTERN AUSTRALIA - Fremantle - Deepwater Channel - Depths

Australian Hydrographic Office

Aus 112 [237/2026]

Insert	depth, 14 ₆ m, and extend contour NW to enclose	31° 58'.792 S	115° 41'.711 E
	depth, 14 ₆ m, enclosed by contour	31° 59'.486 S	115° 41'.730 E

Replace	depth, 15 ₁ m, with depth, 14 ₆ m, enclosed by contour	31° 58'.42 S	115° 41'.60 E
	depth, 14 ₅ m, with depth, 14 ₁ m	31° 59'.99 S	115° 41'.43 E

Delete	depth, 14 ₉ m	31° 58'.86 S	115° 41'.77 E
--------	--------------------------	--------------	---------------

Aus 754 [363/2026]

Insert	contour, between	31° 58'.25 S	115° 41'.38 E
		31° 58'.45 S	115° 41'.60 E
		31° 58'.42 S	115° 41'.80 E
	contour, between	31° 58'.82 S	115° 41'.87 E
		31° 58'.75 S	115° 41'.74 E
		31° 58'.76 S	115° 41'.67 E
		31° 59'.50 S	115° 41'.70 E
		31° 59'.60 S	115° 41'.95 E

Replace	depth, 14 ₅ m, with depth, 14 ₁ m	32° 00'.0 S	115° 41'.4 E
---------	---------------------------------------------------------	-------------	--------------

Delete	contour, between	31° 58'.3 S	115° 41'.4 E
		31° 58'.4 S	115° 41'.8 E
	contour, between	31° 58'.8 S	115° 41'.9 E
		31° 59'.6 S	115° 41'.9 E

422 AUSTRALIA - WESTERN AUSTRALIA - Mandurah - Depths

Department of Transport WA

Aus 116 (Entrance to Mandurah Estuary) [326/2026]

Insert	accompanying block	32° 31'.5 S	115° 42'.8 E
--------	------------------------------------	-------------	--------------

423	AUSTRALIA - WESTERN AUSTRALIA - Muiron Islands - Light buoy northwestwards		
RPS Group			
Aus 744	[420/2026]		
Move	light buoy to	21° 29'.9 S 21° 26'.87 S	114° 02'.3 E 114° 05'.09 E
424	AUSTRALIA - WESTERN AUSTRALIA - Yallingup - Depths		
Australian Hydrographic Office			
Aus 335	[273/2026]		
Replace	depth, 7 ₂ m, with depth, 5 ₈ m depth, 2 ₃ m, with depth, 1 ₅ m, enclosed by contour	33° 38'.1 S 33° 39'.3 S	115° 01'.2 E 115° 00'.8 E
Aus 755	[326/2026]		
Replace	depth, 7 ₂ m, with depth, 5 ₈ m depth, 2 ₃ m, with depth, 1 ₅ m, enclosed by contour	33° 38'.1 S 33° 39'.3 S	115° 01'.2 E 115° 00'.8 E
425	AUSTRALIA - VICTORIA - Port Phillip - Mornington - Artificial reef		
Parks Victoria Notice 244(T)/2026			
Aus 143	[367/2026]		
Insert	fish haven with minimum depth, 6m, centred on	38° 12'.18 S	145° 03'.21 E
Delete	depth, 7m	38° 12'.1 S	145° 03'.3 E
426	AUSTRALIA - VICTORIA - Port Phillip - Point Cook - Wreck		
Ports Victoria Notice 257/2026			
Aus 143	[425/2026]		
Insert	depth, 10 ₃ m, enclosed by danger circle with legend, <i>Wk</i>	37° 55'.59 S	144° 50'.89 E
Aus 155	[367/2026]		
Insert	depth, 10 ₃ m, enclosed by danger circle with legend, <i>Wk</i> depth, 12 ₇ m, enclosed by danger circle with legend, <i>Wk</i>	37° 55'.592 S 37° 55'.988 S	144° 50'.886 E 144° 50'.779 E
427	AUSTRALIA - VICTORIA - Western Port - Tooradin - Infrastructure; coastline; beacons		
Parks Victoria Notice 224(T)/2026			
Aus 151 (Continuation of Western Port)	[329/2026]		
Insert	accompanying block	38° 13'.5 S	145° 23'.5 E
428	AUSTRALIA - BASS STRAIT - Curtis Group - Petroleum safety zone southwestwards		
NOPSEMA			
Aus 487	[282/2026]		
Insert	restricted area with radius 0.88M, centred on	39° 51'.74 S	145° 22'.51 E

429(T)/2026 AUSTRALIA - NEW SOUTH WALES - Port Stephens - Corrie Creek - Light beacon restored
Former Notice - 826(T)/2025 is cancelled
 Transport for NSW

Cancel this notice on receipt.

Chart formerly affected - Aus 209

430(T)/2026 AUSTRALIA - QUEENSLAND - Double Island Point - Light buoy off station
 Maritime Safety Queensland Notice 245(T)/2026

The special light buoy, *Fl. Y. 4s* (25° 56'.33 S 153° 10'.19 E), is off station.

Mariners are advised to navigate with caution in the area.

Chart temporarily affected - Aus 815 - Aus 817

431(T)/2026 AUSTRALIA - QUEENSLAND - Gladstone - North Passage Island - Scientific instrument westwards
 Maritime Safety Queensland Notice 248(T)/2026

A scientific instrument marked by a special light buoy, *Fl. Y. 3s*, exists in position 23° 45'.78 S 151° 09'.94 E.

Mariners are advised to navigate with caution in the area.

Chart temporarily affected - Aus 245

432(T)/2026 AUSTRALIA - QUEENSLAND - Kawana Waters - Subsea operations
 Maritime Safety Queensland Notice 236(T)/2026

Vessel *Iluka* is conducting subsea operations associated with the upgrade to the diffusers on the outfall pipeline in the vicinity of position 26° 43'.86 S 153° 08'.63 E.

The works area is marked by special light buoys, *Fl. Y. 0-5s*.

Mariners are advised to maintain a safe distance and navigate with caution in the area.

Chart temporarily affected - Aus 236

433(T)/2026 AUSTRALIA - QUEENSLAND - Mackay - Slade Rock - Light buoy restored
Former Notice - 371(T)/2026 is cancelled
 Maritime Safety Queensland

Cancel this notice on receipt.

Chart formerly affected - Aus 249 - Aus 250 - Aus 823 - Aus 824

434(T)/2026 AUSTRALIA - NORTHERN TERRITORY - WESTERN AUSTRALIA - Darwin to Eugene McDermont Shoal - Survey operations westwards
 INPEX

Vessel *Offshore Solution* is conducting geotechnical survey operations in an area bounded by the following positions:

12° 53'.75 S 124° 49'.68 E
 12° 53'.92 S 129° 46'.87 E
 12° 28'.59 S 129° 28'.89 E
 12° 42'.86 S 124° 34'.70 E.

Mariners are advised to navigate with caution in the area.

Chart temporarily affected - Aus 309 - Aus 314 - Aus 315 - Aus 316 - Aus 319

435(T)/2026 AUSTRALIA - TIMOR SEA - Margaret Harries Banks to Vulcan Shoal - Survey operations; tide gauges
Cyan Renewables

Vessel *Outer Limit* is conducting survey operations in an area bounded by the following positions:

12° 25'.32 S 125° 03'.12 E
12° 17'.44 S 128° 10'.11 E
11° 04'.43 S 128° 18'.52 E
11° 10'.21 S 125° 06'.27 E.

Tide gauges marked by special light buoys exist in the following positions:

11° 47'.1 S 125° 19'.6 E
11° 39'.6 S 125° 39'.0 E
11° 30'.8 S 126° 01'.0 E
11° 25'.2 S 126° 15'.3 E
11° 20'.3 S 126° 31'.1 E
11° 16'.8 S 126° 47'.6 E
11° 12'.9 S 127° 04'.7 E
11° 08'.8 S 127° 23'.1 E
11° 04'.5 S 127° 40'.0 E
12° 02'.8 S 127° 12'.0 E
11° 57'.9 S 125° 36'.1 E
11° 49'.3 S 126° 00'.8 E
11° 45'.0 S 126° 18'.9 E
11° 41'.0 S 126° 37'.0 E
11° 35'.4 S 126° 37'.0 E
11° 31'.3 S 127° 40'.0 E
11° 24'.8 S 127° 35'.2 E
11° 12'.2 S 127° 56'.7 E
12° 20'.3 S 125° 04'.6 E
12° 19'.7 S 125° 23'.7 E
12° 14'.5 S 125° 44'.5 E
12° 10'.3 S 126° 00'.6 E
12° 05'.1 S 126° 22'.6 E
11° 59'.7 S 126° 42'.4 E
11° 55'.4 S 126° 59'.5 E
11° 51'.6 S 127° 14'.0 E
11° 44'.8 S 127° 31'.5 E
11° 38'.6 S 127° 47'.7 E
11° 30'.5 S 128° 00'.2 E
11° 15'.4 S 128° 14'.2 E.

Mariners are advised to navigate with caution in the area. 2M clearance requested.

Chart temporarily affected - Aus 309 - Aus 311 - Aus 312 - Aus 314 - Aus 315 - Aus 319 - Aus 321

436(T)/2026 AUSTRALIA - WESTERN AUSTRALIA - Barrow Island - Subsea operations; survey operations
Cyan Renewables

On or about 24 May 2026, vessel *MMA Pinnacle* and an ROV will begin conducting subsea operations and survey operations between positions 20° 28'.32 S 114° 52'.68 E and 20° 41'.44 S 115° 24'.94 E.

Mariners are advised to navigate with caution in the area.

Chart temporarily affected - Aus 65 - Aus 327 - Aus 328 - Aus 742

437(T)/2026 AUSTRALIA - WESTERN AUSTRALIA - Centaur Reef - Light beacon unreliable
Department of Transport WA Notice 6855/2026

The south cardinal light beacon, *Q(6)+LFl.15s 7M* (31° 52'.73 S 115° 43'.00 E), is displaying an irregular flash sequence.

Mariners are advised to navigate with caution in the area.

Chart temporarily affected - Aus 112 - Aus 754

438(T)/2026 AUSTRALIA - WESTERN AUSTRALIA - Dampier Archipelago - Well plug and abandonment works; well intervention works northwestwards

Former Notice - 157(T)/2026 is cancelled
Woodside Energy Ltd

Cancel this notice on receipt.

Chart formerly affected - Aus 327

439(T)/2026 AUSTRALIA - WESTERN AUSTRALIA - Dampier Archipelago - Survey operations completed northwards

Former Notice - 257(T)/2026 is cancelled
Woodside Energy Ltd

Cancel this notice on receipt.

Chart formerly affected - Aus 327

440(T)/2026 AUSTRALIA - WESTERN AUSTRALIA - Fremantle - Drilling operations completed

Former Notice - 340(T)/2026 is cancelled
Department of Transport WA Notice 6816/2026

Cancel this notice on receipt.

Chart formerly affected - Aus 112 - Aus 117 - Aus 754

441(T)/2026 AUSTRALIA - WESTERN AUSTRALIA - Muiron Islands - Survey operations completed northwestwards

Former Notice - 391(T)/2026 is cancelled
Reach Subsea

Cancel this notice on receipt.

Chart formerly affected - Aus 328 - Aus 329 - Aus 744

442(T)/2026 AUSTRALIA - WESTERN AUSTRALIA - Port Walcott - Outer North Channel - Light buoy restored

Former Notice - 396(T)/2026 is cancelled
Australian Maritime Safety Authority

Cancel this notice on receipt.

Chart formerly affected - Aus 55 - Aus 326 - Aus 4722 (INT 722) - Aus 4723 (INT 723)

443(T)/2026 AUSTRALIA - WESTERN AUSTRALIA - Port of Ashburton - Topmark destroyed

Pilbara Ports Authority Notice A10/2026

The topmark on light beacon, *Fl.G.3s G02* (21° 32'.19 S 115° 02'.60 E), has been destroyed.

Mariners are advised to navigate with caution in the area.

Chart temporarily affected - Aus 64

444(T)/2026 AUSTRALIA - WESTERN AUSTRALIA - Port of Ashburton - Light beacons relit; topmark restored

Former Notice - 397(T)/2026 is cancelled
Pilbara Ports Authority

Cancel this notice on receipt.

Chart formerly affected - Aus 64 - Aus 743 - Aus 744

445(T)/2026 AUSTRALIA - WESTERN AUSTRALIA - Rottnest Island - Light buoy restored; AIS operational
Former Notice - 1047(T)/2025 is cancelled
 Curtin University

Cancel this notice on receipt.

Chart formerly affected - Aus 754

446(T)/2026 AUSTRALIA - WESTERN AUSTRALIA - Shoalwater Bay - Mooring buoys removed westwards
Former Notice - 167(T)/2026 is cancelled
 Department of Transport WA Notice 6743/2026

Cancel this notice on receipt.

Chart formerly affected - Aus 116 - Aus 117 - Aus 754 - Aus 755

447(T)/2026 AUSTRALIA - WESTERN AUSTRALIA - Two Rocks - Scientific instrument
 Department of Transport WA Notice 6859/2026

A special light buoy, *Fl.Y.2.5s*, exists in position 31° 29'.86 S 115° 34'.46 E.

Mariners are advised to navigate with caution in the area.

Chart temporarily affected - Aus 754

448(T)/2026 AUSTRALIA - SOUTH AUSTRALIA - Margaret Brock Reef - Light unlit
Former Notice - 399(T)/2026 is cancelled
 Department for Infrastructure and Transport SA Notice 30(T)/2026

The light, *Fl.5s 8M* (36° 57'.11 S 139° 35'.71 E), is unlit; a temporary light, *Fl.5s 2M*, exists in situ.

Mariners are advised to navigate with caution in the area.

Chart temporarily affected - Aus 347

449(T)/2026 AUSTRALIA - SOUTH AUSTRALIA - Port Lincoln - Billy Lights Point - Dredging operations; exclusion zone
 Department for Infrastructure and Transport SA Notice 31(T)/2026

Dredging operations are in progress in the vicinity of position 34° 44'.8 S 135° 54'.0 E.

A restricted area marked by special light buoys, *Fl.Y.5s*, exists around the dredging operations.

Mariners are advised to navigate with caution in the area.

Chart temporarily affected - Aus 134 - Aus 776

450(T)/2026 AUSTRALIA - VICTORIA - Golden Beach - Survey operations completed
Former Notice - 263(T)/2026 is cancelled
 GB Energy

Cancel this notice on receipt.

Chart formerly affected - Aus 357

451(T)/2026 AUSTRALIA - VICTORIA - Port Campbell - Survey operations completed southwestwards
Former Notice - 925(T)/2025 is cancelled
 Blue Ocean Marine Tech Systems

Cancel this notice on receipt.

Chart formerly affected - Aus 349

452(T)/2026 AUSTRALIA - VICTORIA - Port Campbell - Drilling operations southwestwards
MODU *Transocean Equinox*

Drill rig *Transocean Equinox* and support vessels are conducting drilling operations in the vicinity of position 38° 53'.49 S 142° 52'.95 E.

Mariners are advised to navigate with caution in the area. 2.5M clearance requested.

Chart temporarily affected - Aus 349

453(T)/2026 AUSTRALIA - VICTORIA - Port Phillip - Scientific instruments
Ports Victoria Notice 241(T)/2026

Subsurface scientific instruments, 1m above the seabed, exist in the following positions:

38° 00'.01 S 144° 54'.61 E

38° 02'.67 S 144° 47'.36 E.

Mariners are advised to navigate with caution in the area.

Chart temporarily affected - Aus 155 - Aus 157

454(T)/2026 AUSTRALIA - VICTORIA - Port Phillip - Scientific instruments
Former Notice - 403(T)/2026 is cancelled
Ports Victoria Notice 241(T)/2026

Cancel this notice on receipt.

Chart formerly affected - Aus 155 - Aus 157 - Aus 4060 (INT 60)

455(T)/2026 AUSTRALIA - VICTORIA - Port Phillip - Hobsons Bay - Light unlit
Parks Victoria Notice 258(T)/2026

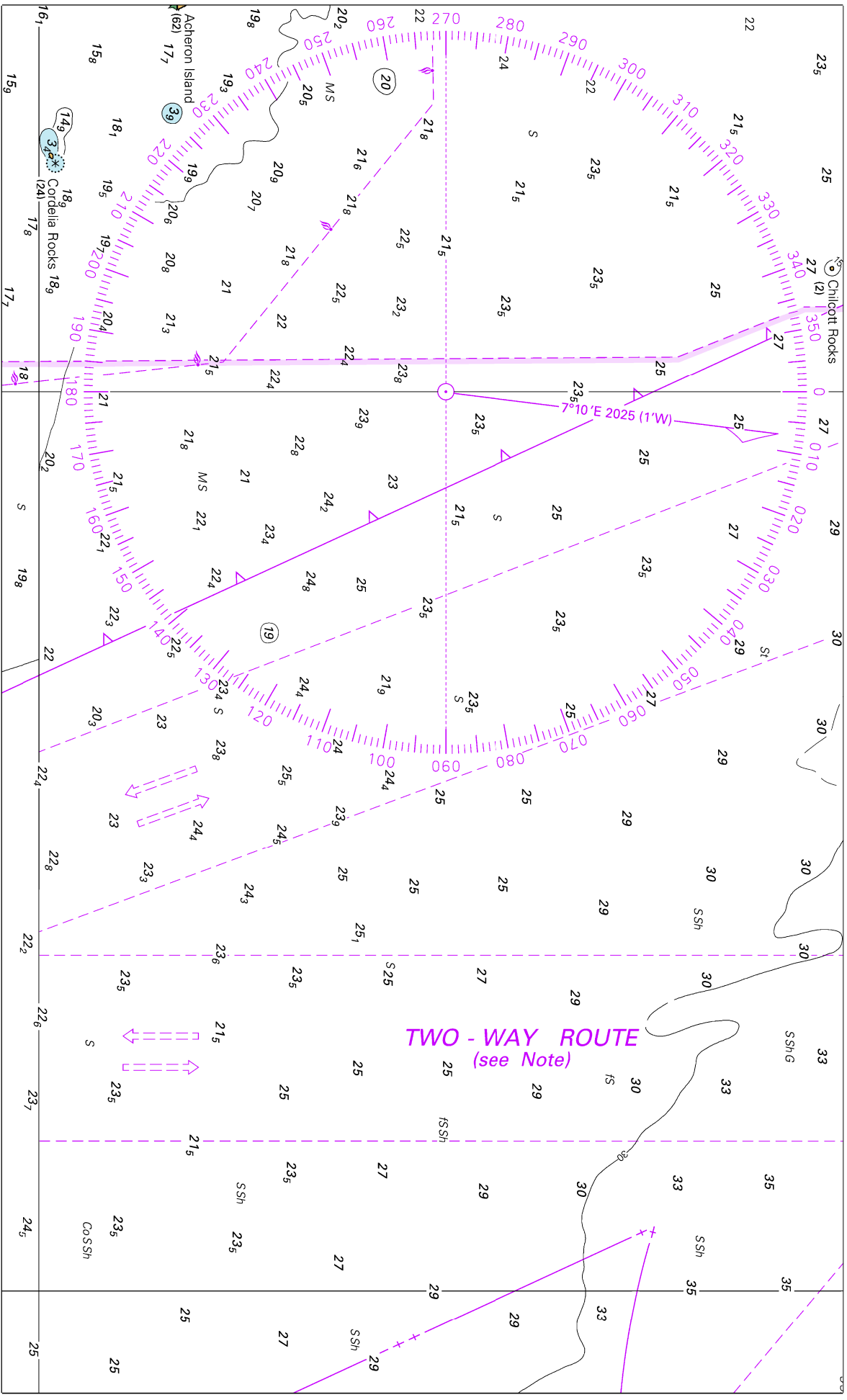
The light, *Fl. G. 10s* (37° 51'.06 S 144° 56'.99 E), is unlit.

Chart temporarily affected - Aus 155

II

HYDROGRAPHIC REPORTS

NIL

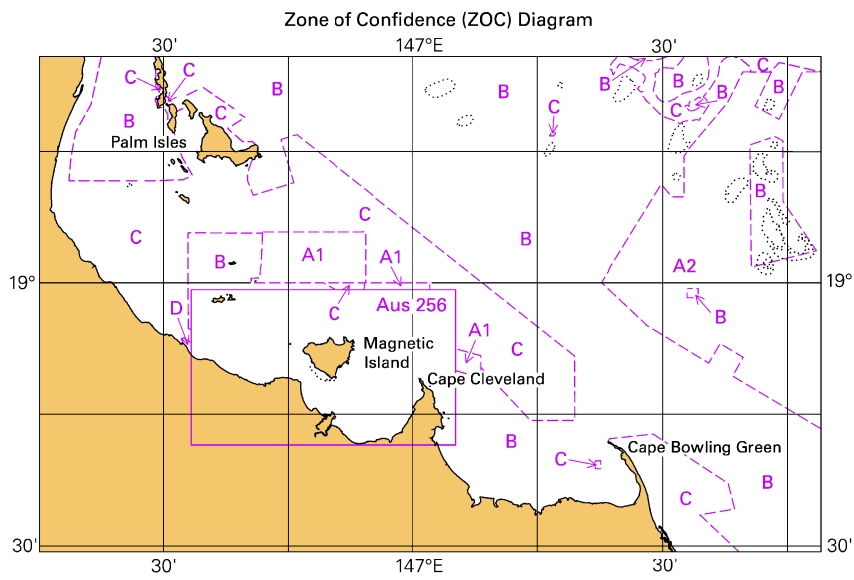


Block A for chart Aus 827

© Commonwealth of Australia 2026

(254.8 x 154.4mm)

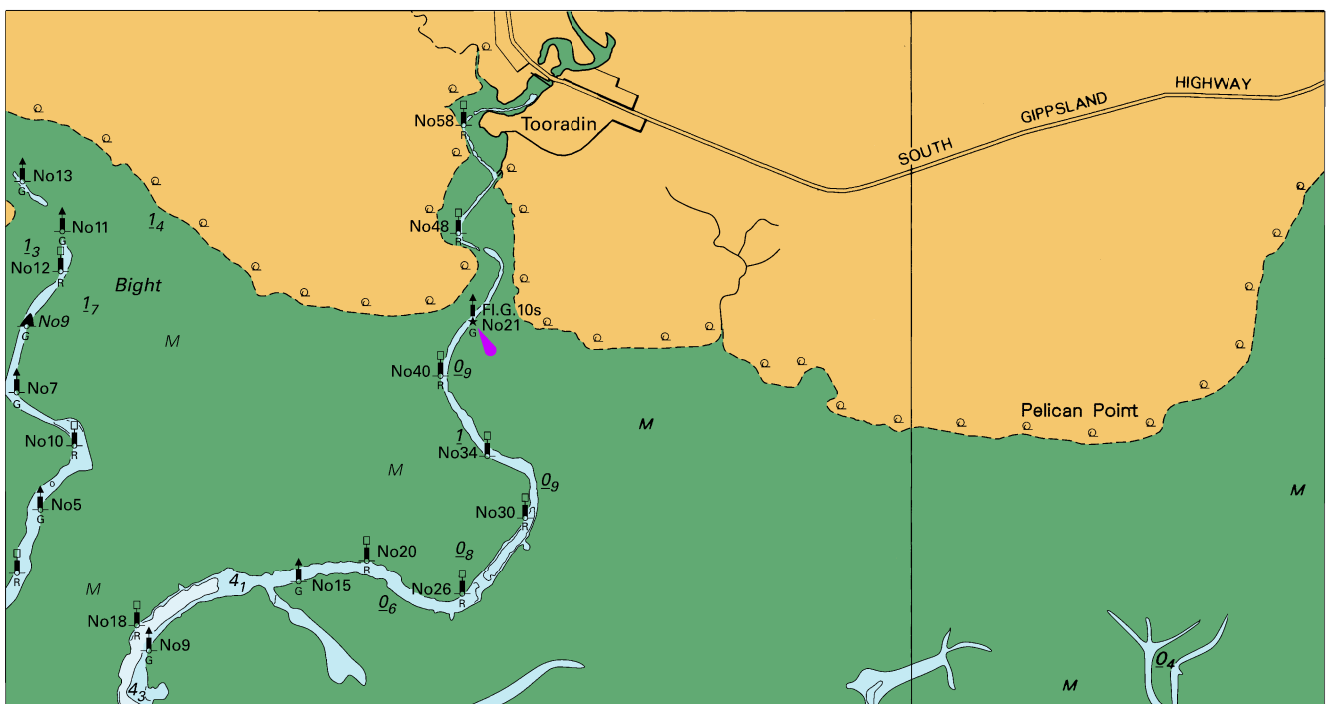
To accompany Australian Notice to Mariners 417/2026



Block for chart Aus 827 © Commonwealth of Australia 2026

(103-3 x 65-3mm)

To accompany Australian Notice to Mariners 427/2026



Block for chart Aus 151

© Commonwealth of Australia 2026

(174.4 x 91.7mm)