

TEMPORARY AND PRELIMINARY NOTICES
In force on 17 April 2026

NEW SOUTH WALES

709(T)/2016 AUSTRALIA - NEW SOUTH WALES - Cape Byron - Obstructions eastwards
HMAS *Gascoyne*

Obstructions exist in positions 28° 36'.20 S 153° 44'.30 E and 28° 36'.95 S 153° 44'.02 E.

Chart temporarily affected - Aus 813

604(T)/2020 AUSTRALIA - NEW SOUTH WALES - Jervis Bay - Hyams Beach - Light buoy
Australian Maritime Warfare Centre

A special light buoy, *Fl.Y.5s*, exists in position 35° 06'.23 S 150° 42'.85 E.

Chart temporarily affected - Aus 807 - Aus 808

997(T)/2020 AUSTRALIA - NEW SOUTH WALES - Merimbula Bay to Broulee Island - Scientific instruments
Transport for NSW

Special light buoys, *F(5)Y.20s*, exist in the following positions:

35° 50'.9 S 150° 11'.3 E

35° 52'.8 S 150° 09'.7 E

36° 54'.5 S 149° 55'.0 E.

Chart temporarily affected - Aus 806 - Aus 807

105(T)/2021 AUSTRALIA - NEW SOUTH WALES - Port Jackson - Berrys Bay - Jetties ruined
Transport for NSW , NSW Roads and Maritime Services

Jetties and piers are ruined, and partially submerged obstructions may exist in an area bounded by the coast and the following positions:

33° 50'.70 S 151° 11'.69 E

33° 50'.70 S 151° 11'.76 E

33° 50'.67 S 151° 11'.85 E

33° 50'.63 S 151° 11'.84 E.

A west cardinal light beacon, *Q(9)15s*, exists in position 33° 50'.59 S 151° 11'.50 E.

Mariners are advised to navigate with caution in the area.

Chart temporarily affected - Aus 200

880(T)/2021 AUSTRALIA - NEW SOUTH WALES - Cape Byron - Light buoy off station northwards
Byron Bay Deep Sea Fishing Club

The special light buoy, *Fl.Y.5s* (28° 35'.40 S 153° 38'.11 E), is off station.

Chart temporarily affected - Aus 813

61(T)/2022 AUSTRALIA - NEW SOUTH WALES - Port Jackson - Chowder Bay - Scientific instruments
Former Notice - 524(T)/2021 is cancelled
Department of Defence

Subsurface scientific instruments, 2m above seabed, exist in the following positions:

33° 50.42' S 151° 15.42' E

33° 50.39' S 151° 15.39' E

33° 50.38' S 151° 15.43' E.

The area will be marked by buoys.

Mariners are advised to navigate with caution in the area.

Chart temporarily affected - Aus 200

727(T)/2022 AUSTRALIA - NEW SOUTH WALES - Tathra to Seal Rocks - Obstructions

Transport for NSW Notice SY2028

Shipping containers and debris may exist along the coast and in offshore waters between Tathra (36° 43'.55 S 149° 59'.46 E) and Seal Rocks (32° 27'.86 S 152° 33'.22 E).

Mariners are advised to navigate with caution in the area.

Chart temporarily affected - Aus 489 - Aus 806 - Aus 807 - Aus 808 - Aus 809 - Aus 810 - Aus 4601 (INT 601) - Aus 4602 (INT 602)

133(T)/2023 AUSTRALIA - NEW SOUTH WALES - Crabbes Creek Beach - Wreck eastwards

Australian Maritime Safety Authority

A wreck exists in position 28° 29'.43 S 153° 38'.52 E.

Chart temporarily affected - Aus 813

808(T)/2023 AUSTRALIA - NEW SOUTH WALES - Clarence River - Scientific instrument

NSW Department of Planning and Environment

A special light buoy, *Fl.Y.5s*, exists in position 29° 25'.31 S 153° 21'.32 E.

Chart temporarily affected - Aus 222

105(T)/2024 AUSTRALIA - NEW SOUTH WALES - Green Bluff - Scientific instruments eastwards

Sydney Institute of Marine Science

Subsurface scientific instruments exist as follows:

<i>Position</i>	<i>Metres below surface</i>
30° 12'.27 S 153° 16'.54 E	43
30° 12'.27 S 153° 17'.05 E	50
30° 12'.31 S 153° 15'.46 E	23
30° 12'.44 S 153° 14'.95 E	30
30° 12'.49 S 153° 14'.43 E	31
30° 12'.55 S 153° 13'.92 E	35
30° 12'.58 S 153° 13'.40 E	34
30° 12'.64 S 153° 12'.90 E	25
30° 12'.67 S 153° 10'.48 E	16
30° 12'.70 S 153° 12'.41 E	26
30° 12'.73 S 153° 11'.91 E	24
30° 12'.77 S 153° 11'.40 E	23
30° 12'.81 S 153° 10'.87 E	20.

Chart temporarily affected - Aus 812

106(T)/2024 AUSTRALIA - NEW SOUTH WALES - Montague Island - Scientific instruments

Sydney Institute of Marine Science

Subsurface scientific instruments exist as follows:

<i>Position</i>	<i>Metres below surface</i>
36° 15'.28 S 150° 14'.20 E	49
36° 15'.40 S 150° 13'.08 E	7
36° 15'.47 S 150° 12'.58 E	33
36° 15'.52 S 150° 12'.04 E	38
36° 15'.59 S 150° 11'.50 E	31
36° 15'.66 S 150° 10'.96 E	30
36° 15'.71 S 150° 10'.43 E	29
36° 15'.75 S 150° 09'.15 E	12
36° 15'.77 S 150° 09'.97 E	29.

Chart temporarily affected - Aus 806 - Aus 807

107(T)/2024 AUSTRALIA - NEW SOUTH WALES - Seal Rocks - Scientific instruments
Sydney Institute of Marine Science

Subsurface scientific instruments exist as follows:

<i>Position</i>	<i>Metres below surface</i>
32° 27'.16 S 152° 33'.47 E	35
32° 27'.16 S 152° 32'.75 E	28
32° 27'.45 S 152° 32'.94 E	26
32° 28'.45 S 152° 33'.80 E	38
32° 28'.81 S 152° 34'.11 E	42.

Chart temporarily affected - Aus 810

741(T)/2024 AUSTRALIA - TASMAN SEA - Tasman Basin - Light buoy off station
Australian Bureau of Meteorology

The special light buoy, *Fl.Y.2s* (44° 47'.40 S 161° 42'.03 E), is off station.

Chart temporarily affected - Aus 4601 (INT 601)

900(T)/2024 AUSTRALIA - NEW SOUTH WALES - Port Stephens - Scientific instrument
Former Notice - 750(T)/2023 is cancelled
Manly Hydraulics Laboratory

A special light buoy, *Fl.Y.3s*, exists in position 32° 41'.77 S 152° 05'.10 E.

Chart temporarily affected - Aus 209

742(T)/2025 AUSTRALIA - NEW SOUTH WALES - Clarence River - Yamba - Light buoys
Port Authority of New South Wales Notice 1/2025

Lateral light buoys exist as follows:

<i>Position</i>	<i>Characteristics</i>
29° 25'.65 S 153° 21'.68 E	<i>Fl.R.3s</i>
29° 25'.71 S 153° 21'.48 E	<i>Fl.G.3s</i>
29° 25'.76 S 153° 21'.47 E	<i>Fl.R.3s.</i>

Chart temporarily affected - Aus 222

826(T)/2025 AUSTRALIA - NEW SOUTH WALES - Port Stephens - Corrie Creek - Light beacon destroyed
Transport for NSW

The starboard lateral light beacon, *Fl.G.3s* (32° 40'.32 S 152° 08'.89 E), has been destroyed, a starboard lateral light buoy, *Fl.G.3s*, exists in situ.

Mariners are advised to navigate with caution in the area.

Chart temporarily affected - Aus 209

870(P)/2025 AUSTRALIA - NEW SOUTH WALES - The Entrance - Shoaling eastwards
Australian Hydrographic Office

Latest survey indicates shoaler depths than those charted may exist in an area bounded by the following positions:

33° 20'.97 S 151° 31'.17 E
33° 21'.19 S 151° 32'.26 E
33° 24'.22 S 151° 30'.14 E
33° 24'.41 S 151° 29'.00 E.

Mariners are advised to navigate with caution in the area.

Products will be updated in due course.

Chart which will be affected - Aus 809

942(P)/2025 AUSTRALIA - NEW SOUTH WALES - Sydney Harbour - Wreck

Port Authority of New South Wales

Latest surveys indicate that the wreck in position 33° 52'.02 S 151° 17'.41 E is shoaler than charted, with a least depth of 22.8m.

Charts will be updated in due course.

Chart which will be affected - Aus 200

987(T)/2025 AUSTRALIA - NEW SOUTH WALES - Brooms Head - Fish aggregating devices off station eastwards
Department of Primary Industries and Regional Development

The special light buoy, *Fl.Y.5s FAD (Sep-Jun)* (29° 36'.75 S 153° 29'.19 E) is off station and in position 29° 37'.27 S 153° 29'.15 E.

Chart temporarily affected - Aus 812 - Aus 813

1030(T)/2025 AUSTRALIA - NEW SOUTH WALES - Maroubra Bay - Scientific instrument
Department of Climate Change, Energy, the Environment and Water

A special light buoy, *Fl.Y.2.5s*, exists in position 33° 56'.28 S 151° 15'.83 E.

Chart temporarily affected - Aus 808

102(T)/2026 AUSTRALIA - NEW SOUTH WALES - Bulli - Obstruction eastwards
Port Kembla Water Police

A floating obstruction exists in position 34° 20'.79 S 151° 10'.82 E.

Mariners are advised to navigate with caution in the area.

Chart temporarily affected - Aus 808

146(P)/2026 AUSTRALIA - NEW SOUTH WALES - Coffs Harbour to Ballina - Artificial reefs
Department of Primary Industries and Regional Development

Artificial reefs are being installed as follows:

<i>Position</i>	<i>Minimum depth</i>
28° 55'.45 S 153° 35'.13 E	20m
30° 23'.50 S 153° 06'.95 E	14m.

Mariners are advised to navigate with caution in the area.

Charts will be updated in due course.

Chart which will be affected - Aus 812 - Aus 813

147(T)/2026 AUSTRALIA - NEW SOUTH WALES - Port Macquarie - Light buoy off station eastwards
NSW Department of Primary Industries and Regional Development

The special light buoy, *Fl.Y.5s FAD (Sep-Jun)* (31° 24'.55 S 153° 04'.73 E), is off station and is currently in position 31° 26'.44 S 153° 04'.34 E.

Chart temporarily affected - Aus 811

243(T)/2026 AUSTRALIA - NEW SOUTH WALES - Cape Banks - Fish aggregating device off station eastwards
NSW Department of Primary Industries and Regional Development

The special light buoy, *Fl.Y.5s (Oct-May)* (33° 59'.32 S 151° 20'.95 E) is off station and in position 34° 00'.28 S 151° 20'.36 E.

Chart temporarily affected - Aus 808

244(T)/2026 AUSTRALIA - NEW SOUTH WALES - Newcastle - Belmont - Construction works
Transport for NSW

Construction works from a jack up barge are underway in the vicinity of position 33° 03'.12 S 151° 40'.58 E. An exclusion zone marked by yellow flashing buoys and 24 hour surveillance, exists for all vessels not involved in the works.

Mariners should navigate with caution.

Chart temporarily affected - Aus 809

245(T)/2026 AUSTRALIA - NEW SOUTH WALES - QUEENSLAND - Sydney to Brisbane - Cable laying operations eastwards

Gulf Agency Company (Australia)

Cable laying operations will be conducted between Sydney and Brisbane. Cable lay and post lay inspection activities will occur along the route shown in the diagram and mariners are advised to keep clear of the vessel, *Dependable*, during activities. Further advice on specific areas of activity will be issued through the AUSCOAST warning system.

Note: For e-notice users, please see full edition for map.

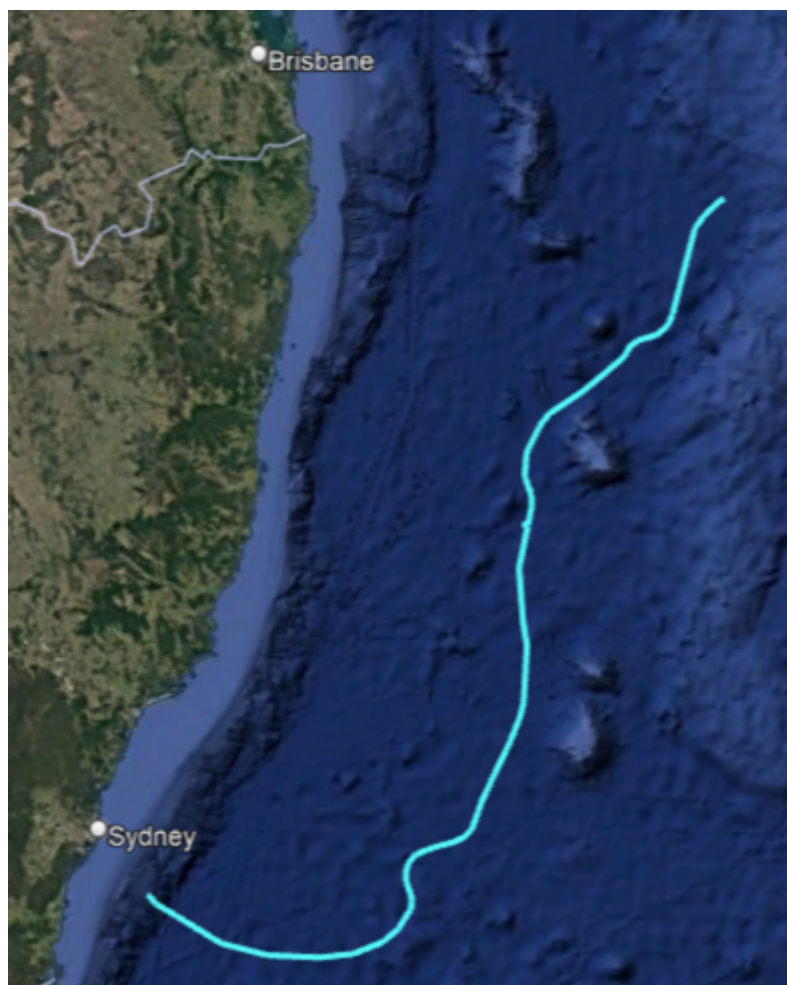


Chart temporarily affected - Aus 489 - Aus 4060 (INT 60) - Aus 4601 (INT 601) - Aus 4602 (INT 602)

246(T)/2026 AUSTRALIA - NEW SOUTH WALES - Sydney to Eden - Cable laying operations eastwards

Gulf Agency Company (Australia)

Cable laying operations will be conducted between Sydney and Eden. Cable lay and post lay inspection activities will occur along the route shown in the diagram and mariners are advised to keep clear of the vessel, *Responder*, during activities. Further advice on specific areas of activity will be issued through the AUSCOAST warning system.

Note: For e-notice users, please see full edition for map.

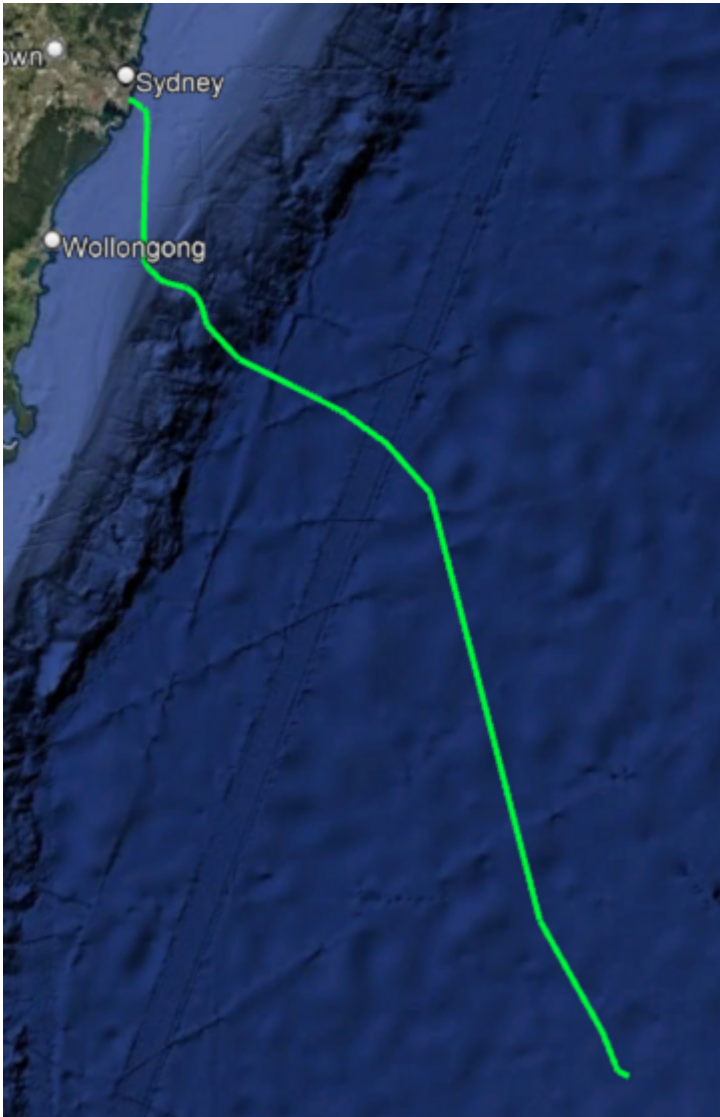


Chart temporarily affected - Aus 198 - Aus 489 - Aus 808 - Aus 4060 (INT 60) - Aus 4601 (INT 601) - Aus 4602 (INT 602)

285(T)/2026 AUSTRALIA - NEW SOUTH WALES - Jervis Bay - Live firing southeastwards
Department of Defence

During the period 9 to 10 April 2026, live firing will be conducted in an area bounded by the following positions:

35° 05'.0 S 150° 58'.0 E
35° 12'.0 S 150° 53'.0 E
35° 17'.0 S 150° 45'.0 E
35° 20'.0 S 150° 34'.0 E
36° 56'.0 S 150° 45'.0 E
36° 41'.0 S 151° 46'.0 E
36° 13'.0 S 152° 25'.0 E
36° 41'.0 S 151° 46'.0 E
35° 36'.0 S 152° 50'.0 E
35° 19'.0 S 152° 55'.0 E
34° 56'.0 S 152° 25'.0 E
36° 41'.0 S 151° 46'.0 E
34° 57'.0 S 150° 59'.0 E.

Mariners are advised to keep clear of this area.

Chart temporarily affected - Aus 489 - Aus 806 - Aus 807 - Aus 808 - Aus 4601 (INT 601) - Aus 4602 (INT 602)

286(T)/2026 AUSTRALIA - NEW SOUTH WALES - Kurnell Peninsula - Cape Baily - Light buoy off station eastwards
Port Authority of New South Wales Notice 9/2026

The special light buoy, *Fl(5)Y.20s* (34° 02'.47 S 151° 15'.20 E), is off station and is currently in position 34° 02'.72 S 151° 15'.04 E with light temporary altered to *Fl(5)Y.20s & Fl.2s*.

Chart temporarily affected - Aus 198

330(T)/2026 AUSTRALIA - NEW SOUTH WALES - Cape Banks to Cabbage Tree Bay - Scientific instruments eastwards

Former Notice - 701(T)/2023 is cancelled
Sydney Institute of Marine Science

Subsurface scientific instruments exist as follows:

<i>Position</i>	<i>Metres below surface</i>
33° 47'.92 S 151° 17'.71 E	9
33° 48'.05 S 151° 18'.33 E	24
33° 49'.59 S 151° 17'.89 E	28
33° 49'.85 S 151° 17'.64 E	28
33° 50'.05 S 151° 17'.48 E	27
33° 50'.25 S 151° 17'.30 E	26.5
33° 53'.74 S 151° 17'.30 E	27
33° 53'.91 S 151° 17'.75 E	41
33° 54'.17 S 151° 18'.16 E	58
33° 54'.43 S 151° 18'.59 E	63
33° 54'.69 S 151° 19'.05 E	64
33° 54'.96 S 151° 19'.51 E	64
33° 55'.21 S 151° 19'.93 E	71
33° 55'.46 S 151° 20'.36 E	70
33° 55'.72 S 151° 20'.79 E	80
33° 55'.98 S 151° 21'.24 E	80
33° 56'.25 S 151° 21'.71 E	82
33° 56'.49 S 151° 22'.16 E	87
33° 56'.75 S 151° 22'.59 E	90
33° 57'.06 S 151° 23'.02 E	98
33° 57'.32 S 151° 23'.47 E	119.

Chart temporarily affected - Aus 200 - Aus 489 - Aus 808 - Aus 809

QUEENSLAND

470(T)/2017 AUSTRALIA - QUEENSLAND - North Gardner Bank - Foul ground Maritime Safety Queensland Notice 24/2017

A foul ground exists in position 24° 56'.30 S 153° 26.90 E.

Chart temporarily affected - Aus 816

72(T)/2018 AUSTRALIA - QUEENSLAND - Fitzroy Island - Bird Rock - Light buoys *Former Notice - 29(T)/2018 is cancelled* Maritime Safety Queensland Notice 503(T)/2017

Two special light buoys, *Fl. Y. 2-5s* exist in position 16° 55'.43 S 145° 59'.43 E.

Chart temporarily affected - Aus 830

213(T)/2018 AUSTRALIA - QUEENSLAND - Bribie Island - South Point - Shoaling Maritime Safety Queensland

Shoaling exists at the southern end of Bribie Island, with a least depth of *0.5m* in position 27° 06'.18 S 153° 11'.24 E.

Mariners are advised to navigate with caution in the area.

Chart temporarily affected - Aus 236

488(T)/2019 AUSTRALIA - QUEENSLAND - Karumba - Wreck northwards Maritime Safety Queensland Notice 188(T)/2019

A stranded wreck marked by a special light buoy, *Fl. Y. 2-5s*, exists in position 17° 15'.36 S 140° 53'.89 E.

Chart temporarily affected - Aus 303

548(P)/2019 AUSTRALIA - QUEENSLAND - Hydrographers Passage - Shoaling LADS Flight

Latest survey shows shoaler depths than those charted may exist in an area bounded by the following positions:

20° 36'.52 S 150° 04'.39 E
20° 30'.63 S 150° 17'.03 E
20° 23'.93 S 150° 16'.63 E
20° 06'.15 S 150° 04'.79 E
20° 11'.27 S 150° 00'.18 E
20° 21'.88 S 150° 04'.70 E
20° 27'.57 S 150° 09'.82 E
20° 32'.65 S 150° 01'.91 E.

Mariners are advised to navigate with caution in the area.

Charts will be updated in due course.

Chart which will be affected - Aus 821 - Aus 824

1049(P)/2020 AUSTRALIA - TORRES STRAIT - Deliverance Island - Shoaling HMAS *Albany*

Latest survey shows shoaling exists as follows:

<i>Depth</i>	<i>Position</i>
<i>1.1m</i>	9° 32'.89 S 141° 27'.03 E
<i>3.6m</i>	9° 32'.22 S 141° 27'.73 E.

Mariners are advised to navigate with caution in the area.

Charts will be updated in due course.

Chart which will be affected - Aus 842

21(T)/2021 AUSTRALIA - CORAL SEA - Middleton Reef - Unexploded ordnance
Parks Australia

An exclusion zone exists in an area bounded by the following positions:

29° 27'.12 S 159° 02'.92 E
29° 26'.58 S 159° 02'.92 E
29° 26'.58 S 159° 03'.55 E
29° 27'.12 S 159° 03'.55 E.

Unexploded ordnance may exist in the area and mariners are advised to navigate with caution.

Chart temporarily affected - Aus 618

247(T)/2021 AUSTRALIA - QUEENSLAND - Cape Ferguson - Scientific instrument
Australian Institute of Marine Science

A special spar light buoy, Q(4)Y.18s, exists in position 19° 16'.52 S 147° 03'.84 E.

Chart temporarily affected - Aus 256

249(P)/2021 AUSTRALIA - QUEENSLAND - Holt Island to Hexham Island - Shoaling
LADS Flight

Latest survey shows shoaler depths than those charted may exist in areas bounded by the following positions:

22° 11'.75 S 150° 22'.51 E
22° 11'.90 S 150° 22'.99 E
22° 13'.77 S 150° 22'.25 E
22° 13'.51 S 150° 21'.60 E;
and
22° 00'.22 S 150° 23'.51 E
22° 01'.04 S 150° 23'.61 E
22° 02'.68 S 150° 18'.70 E
22° 01'.44 S 150° 16'.29 E
22° 00'.19 S 150° 21'.01 E.

Mariners are advised to navigate with caution in the area.

Charts will be updated in due course.

Chart which will be affected - Aus 260 - Aus 367 - Aus 822

337(P)/2021 AUSTRALIA - TORRES STRAIT - Boigu Island - Shoaling
HMAS *Leeuwin*

Latest survey shows shoaler depths than those charted may exist in areas bounded by the following positions:

9° 14'.38 S 142° 15'.82 E
9° 15'.78 S 142° 19'.88 E
9° 15'.49 S 142° 20'.00 E
9° 13'.58 S 142° 16'.26 E;
and
9° 12'.49 S 142° 15'.50 E
9° 12'.33 S 142° 13'.73 E
9° 13'.16 S 142° 13'.24 E
9° 13'.20 S 142° 15'.21 E.

Mariners are advised to navigate with caution in the area.

Charts will be updated in due course.

Chart which will be affected - Aus 841

738(T)/2021 AUSTRALIA - QUEENSLAND - Fitzroy River - Middle Channel - Scientific instrument
Maritime Safety Queensland Notice 31/2021

A special light buoy, Q.Y, exists in position 23° 28'.23 S 150° 56'.37 E.

Chart temporarily affected - Aus 265

741(T)/2021 AUSTRALIA - QUEENSLAND - Fraser Island - Elbow Point - Shoaling
Navionics

Depths of less than 1m have been reported in an area bounded by the following positions:

25° 44'.40 S 152° 59'.29 E

25° 44'.71 S 152° 59'.37 E

25° 44'.89 S 153° 00'.30 E

25° 44'.66 S 153° 00'.38 E

25° 44'.40 S 152° 59'.77 E.

Mariners are advised to navigate with caution in the area.

Charts will be updated in due course.

Chart temporarily affected - Aus 817

980(T)/2021 AUSTRALIA - QUEENSLAND - Fitzroy River - South Channel - Scientific instrument

Former Notice - 661(T)/2016 is cancelled

Maritime Safety Queensland Notice 400(T)/2021

A special light buoy, *Fl.Y.4s*, exists in position 23° 30'.23 S 150° 45'.83 E.

Chart temporarily affected - Aus 819

1025(T)/2021 AUSTRALIA - TORRES STRAIT - Great North East Channel - Coconut Island - Scientific instrument

Former Notice - 486(T)/2021 is cancelled

Maritime Safety Queensland Notice 427(T)/2021

A special light buoy, *Fl(5)Y.20s*, exists in position 10° 03'.18 S 143° 03'.12 E.

Chart temporarily affected - Aus 839

27(P)/2022 AUSTRALIA - TORRES STRAIT - Boigu Island - Shoaling

Australian Institute of Marine Science

The drying area (9° 15'.51 S 142° 06'.09 E) extends 0.27M northwest to position 9° 15'.31 S 142° 05'.91 E.

The reef (9° 11'.96 S 142° 10'.56 E) extends 0.27M south to position 9° 12'.23 S 142° 10'.56 E.

Mariners are advised to navigate with caution in the area.

Charts will be updated in due course.

Chart which will be affected - Aus 841

422(T)/2022 AUSTRALIA - QUEENSLAND - Palm Beach - Light buoy off station

Maritime Safety Queensland Notice 220(T)/2022

The special light buoy, *Fl.Y.5s* (28° 06'.34 S 153° 28'.42 E), is off station.

Chart temporarily affected - Aus 814

490(T)/2022 AUSTRALIA - QUEENSLAND - Gold Coast Seaway - Light buoy destroyed eastwards

Maritime Safety Queensland Notice 266/2022

The special light buoy, *Fl.Y.4s* (27° 54'.93 S 153° 27'.59 E), has been destroyed and has sunk in position.

Mariners are advised to navigate with caution in the area.

Chart temporarily affected - Aus 814

788(P)/2022 AUSTRALIA - CORAL SEA - Diamond Islets - Shoaling
LADS Flight

Shoaler depths than those charted exist in the vicinity of the Diamond Islets.

Charts will updated in due course.

Chart which will be affected - Aus 614

877(T)/2022 AUSTRALIA - QUEENSLAND - Brisbane River - Hamilton Reach - Wreck
Maritime Safety Queensland Notice 172(T)/2022

A wreck marked by a special light buoy, *Fl. Y. 2.5s*, exists in position 27° 26'.43 S 153° 03'.28 E.

Mariners are advised to navigate with caution in the area.

Chart temporarily affected - Aus 237

1026(T)/2022 AUSTRALIA - QUEENSLAND - Upstart Bay - Obstructions
Maritime Safety Queensland

Obstructions on the seabed exist within a 1M radius of position 19° 44'.13 S 147° 40'.74 E.

Mariners area advised not to anchor or trawl in the area.

Chart temporarily affected - Aus 826

67(T)/2023 AUSTRALIA - QUEENSLAND - Townsville - Shoaling
Maritime Safety Queensland

Flooding and latest survey shows shoaler depths than those charted may exist in Ross River between positions 19° 15'.36 S 146° 50'.85 E and 19° 17'.00 S 146° 49'.51 E.

Mariners are advised to navigate with caution in the area.

Charts will be updated in due course.

Chart temporarily affected - Aus 256

68(T)/2023 AUSTRALIA - QUEENSLAND - Townsville - Obstructions
Maritime Safety Queensland Notice 24(T)/2023

Due to recent flooding, floating and submerged obstructions may exist in the coastal waters between Dunk Island (17° 56'.72 S 146° 09'.47 E) and Bowen (20° 00'.54 S 148° 17'.40 E).

Mariners are advised to navigate with caution in the area.

Chart temporarily affected - Aus 255 - Aus 256 - Aus 268 - Aus 825 - Aus 826 - Aus 827 - Aus 828 - Aus 829

99(T)/2023 AUSTRALIA - QUEENSLAND - Brisbane River - Lytton and Quarantine Reach - Obstruction; light buoy
Maritime Safety Queensland Notice 37(T)/2023

An obstruction marked by a special light buoy, *Fl. Y. 2.5s*, exists in position 27° 24'.74 S 153° 08'.90 E.

Chart temporarily affected - Aus 237

357(T)/2023 AUSTRALIA - QUEENSLAND - Gold Coast Seaway - Wreck eastwards
Australian Maritime Safety Authority Auscoast Warning 95/2023

A wreck exists in the vicinity of position 27° 53'.8 S 153° 38'.5 E.

Chart temporarily affected - Aus 814

360(T)/2023 AUSTRALIA - QUEENSLAND - Hinchinbrook Channel - Light buoy off station

Maritime Safety Queensland Notice 168(T)/2023

The starboard lateral light buoy, *Fl.G.4-3s No15* (18° 29'.63 S 146° 17'.30 E), is off station.

Chart temporarily affected - Aus 259

361(T)/2023 AUSTRALIA - QUEENSLAND - Hinchinbrook Island - Missionary Bay - Light beacon destroyed

Former Notice - 319(T)/2023 is cancelled

Maritime Safety Queensland Notice 169(T)/2023

The special light beacon, *Fl.Y.3s* (18° 15'.20 S 146° 11'.79 E), has been destroyed; a special light buoy, *Fl.Y.3s*, exists in situ.

Mariners are advised to navigate with caution in the area.

Chart temporarily affected - Aus 259 - Aus 828

484(T)/2023 AUSTRALIA - QUEENSLAND - Fitzroy River - Middle Channel - Scientific instrument

Maritime Safety Queensland Notice 229(T)/2023

A special light buoy, *Fl.Y.5s*, exists in position 23° 27'.85 S 150° 56'.60 E.

Chart temporarily affected - Aus 265 - Aus 819

813(T)/2023 AUSTRALIA - QUEENSLAND - Moreton Bay - Bramble Bay - Pine River - Obstruction; light buoy

Maritime Safety Queensland Notice 398(T)/2023

An obstruction marked by a special light buoy, *Fl.Y.2-5s*, exists in position 27° 16'.48 S 153° 04'.19 E.

Chart temporarily affected - Aus 236

17(T)/2024 AUSTRALIA - TORRES STRAIT - Yorke Islands - Scientific instrument

Maritime Safety Queensland Notice 592(T)/2023

A special light buoy, *Fl(5)Y.20s*, exists in position 9° 44'.70 S 143° 24'.29 E.

Chart temporarily affected - Aus 377 - Aus 840

250(T)/2024 AUSTRALIA - QUEENSLAND - Great Sandy Strait - Light buoys

Former Notice - 219(T)/2024 is cancelled

Maritime Safety Queensland Notice 146/2017, 145(T)/2021, 70/2020

Light buoys exist as follows:

<i>Number</i>	<i>Position</i>	<i>Characteristics</i>
S3	25° 12'.70 S 152° 54'.75 E	<i>Fl.G.2-5s</i>
NG1	25° 20'.20 S 153° 01'.40 E	<i>Fl.G.2-5s.</i>

Chart temporarily affected - Aus 817

408(T)/2024 AUSTRALIA - QUEENSLAND - North Stradbroke Island - Point Lookout - Scientific instruments

Sydney Institute of Marine Science

Subsurface scientific instruments exist as follows:

<i>Position</i>	<i>Metres below surface</i>
27° 25'.29 S 153° 35'.08 E	50
27° 25'.34 S 153° 34'.57 E	46
27° 25'.37 S 153° 34'.08 E	45
27° 25'.42 S 153° 33'.31 E	36
27° 25'.44 S 153° 33'.31 E	28.

Chart temporarily affected - Aus 236 - Aus 814

409(T)/2024 AUSTRALIA - QUEENSLAND - One Tree Island to Heron Island - Scientific instruments

Sydney Institute of Marine Science

Subsurface scientific instruments exist as follows:

<i>Position</i>	<i>Metres below surface</i>
23° 25'.97 S 151° 55'.61 E	19
23° 26'.20 S 151° 58'.84 E	10
23° 26'.38 S 151° 53'.98 E	9
23° 26'.85 S 151° 54'.74 E	15
23° 28'.26 S 151° 56'.82 E	16
23° 28'.26 S 151° 56'.82 E	8
23° 28'.34 S 151° 58'.69 E	15
23° 28'.76 S 152° 04'.96 E	12
23° 29'.52 S 152° 02'.75 E	16
23° 30'.37 S 152° 02'.43 E	8
23° 30'.52 S 152° 03'.33 E	13
23° 30'.83 S 152° 05'.63 E	18.

Chart temporarily affected - Aus 819

528(T)/2024 AUSTRALIA - QUEENSLAND - Moreton Bay - Chain Banks - Scientific instrument
Maritime Safety Queensland Notice 323(T)/2024

A special light buoy, *Fl.Y.4s*, exists in position 27° 25'.79 S 153° 18'.38 E.

Chart temporarily affected - Aus 236

604(T)/2024 AUSTRALIA - TORRES STRAIT - Richardson Reef - Cook Reef - Scientific instruments
CSIRO , Maritime Safety Queensland Notice 377(T)/2024

Subsurface scientific instruments exist as follows:

<i>Position</i>	<i>Metres below surface</i>
10° 09'.57 S 143° 02'.39 E	23.2
10° 24'.34 S 141° 07'.25 E	27.6.

Chart temporarily affected - Aus 700 - Aus 839 - Aus 842

711(T)/2024 AUSTRALIA - QUEENSLAND - Yorkeys Knob - Shoaling; light buoy
Maritime Safety Queensland Notice 444(T)/2024

Shoaling exists at the entrance to the marina and is marked by a special light buoy, *Fl.Y.2-5s*, in position 16° 48'.02 S 145° 43'.01 E.

Mariners are advised to navigate with caution in the area.

Chart temporarily affected - Aus 262

743(T)/2024 AUSTRALIA - QUEENSLAND - Cairns - Trinity Inlet - Wreck
Maritime Safety Queensland Notice 467(T)/2024

A stranded wreck marked by a special light buoy, *Fl.Y.2-5s*, exists in position 16° 56'.90 S 145° 47'.19 E.

Mariners are advised to navigate with caution in the area.

Chart temporarily affected - Aus 262

866(T)/2024 AUSTRALIA - TORRES STRAIT - Cook Reef - Scientific instruments southwards
Fugro

Tide gauges exist in positions 10° 27'.06 S 141° 20'.32 E and 10° 28'.40 S 141° 41'.78 E.

Mariners are advised to navigate with caution in the area.

Chart temporarily affected - Aus 700 - Aus 842

901(T)/2024 AUSTRALIA - QUEENSLAND - Brisbane River - Hamilton Reach - Scientific instrument

Maritime Safety Queensland Notice 565(T)/2024

A special light buoy, *Fl.Y.3s*, exists in position 27° 26'.49 S 153° 03'.48 E.

Mariners are advised to navigate with caution in the area.

Chart temporarily affected - Aus 237

968(T)/2024 AUSTRALIA - QUEENSLAND - Duyfken Point - Scientific instrument westwards

Maritime Safety Queensland Notice 578(T)/2024

A special light buoy, *Fl(5)Y.20s*, exists in position 12° 10'.16 S 140° 16'.80 E.

Chart temporarily affected - Aus 4603 (INT 603)

28(T)/2025 AUSTRALIA - QUEENSLAND - Laguna Quays - Shoaling

Former Notice - 972(T)/2023 is cancelled

Maritime Safety Queensland

Shoaling exists within Laguna Quays Marina (20° 36'.0 S 148° 41'.0 E).

Mariners are advised to navigate with caution in the area.

Chart temporarily affected - Aus 252

98(T)/2025 AUSTRALIA - QUEENSLAND - Deception Bay - Light buoy

Maritime Safety Queensland NTM 010(T)/2025

A special light buoy, *Fl.Y.4s*, exists in position 27° 06'.63 S 153° 07'.32 E.

Chart temporarily affected - Aus 236

135(T)/2025 AUSTRALIA - QUEENSLAND - Brisbane River - Hamilton Reach - Light buoys

Maritime Safety Queensland Notice 30(T)/2025

The special light buoy, *Fl.Y.3s* (27° 26'.77 S 153° 04'.48 E), has been temporarily relocated to position 27° 26'.80 S 153° 04'.49 E.

The special light buoy, *Fl.Y.3s* (27° 26'.72 S 153° 04'.24 E), has been temporarily relocated to position 27° 26'.73 S 153° 04'.23 E.

Mariners are advised to navigate with caution in the area.

Chart temporarily affected - Aus 237

173(T)/2025 AUSTRALIA - QUEENSLAND - Laguna Quays - Lights unlit

Maritime Safety Queensland

The leading lights, *F.Bu (F Day)* (20° 36'.19 S 148° 40'.80 E) and *F.Bu (F Day)* (20° 36'.16 S 148° 40'.86 E), are unlit.

Chart temporarily affected - Aus 252

255(T)/2025 AUSTRALIA - QUEENSLAND - Gold Coast - Main Beach - Light buoy off station eastwards

Maritime Safety Queensland Notice 601(T)/2024, 84(T)/2025

The special light buoy, *Fl.Y.3s* (27° 57'.60 S 153° 27'.43 E), is off station.

Chart temporarily affected - Aus 814

257(T)/2025 AUSTRALIA - QUEENSLAND - Moreton Bay - Brisbane River - Navaids destroyed or off station; depths

Maritime Safety Queensland

Nav aids in Moreton Bay and the Brisbane River may be destroyed or off station due to recent flooding.

Obstructions may exist and depths may not be consistent with charted information.

Mariners are advised to navigate with caution in the area.

Chart temporarily affected - Aus 236 - Aus 237

334(T)/2025 AUSTRALIA - TORRES STRAIT - Holmes Reef - Wreck

Maritime Safety Queensland

A stranded wreck marked by a special light buoy, *Fl.Y.4s*, exists in position 10° 36'.23 S 142° 14'.17 E.

Mariners are advised to navigate with caution in the area.

Chart temporarily affected - Aus 293 - Aus 299

366(T)/2025 AUSTRALIA - QUEENSLAND - Cape Clinton Peninsula - Survey operations

Maritime Safety Queensland Notice 159(T)/2025

An unmanned surface vehicle (USV) will be conducting survey operations in an area bounded by the coast and the following positions:

22° 39'.40 S 150° 48'.27 E

22° 39'.40 S 150° 48'.80 E

22° 33'.30 S 150° 48'.80 E

22° 33'.30 S 150° 47'.47 E.

Tide gauges marked by a special light buoy, *Fl.Y.2s*, exist in position 22° 37'.8 S 150° 48'.1 E.

Mariners are advised to navigate with caution in the area.

Chart temporarily affected - Aus 248 - Aus 820

408(T)/2025 AUSTRALIA - QUEENSLAND - Karumba - Scientific instrument

Maritime Safety Queensland Notice 176(T)/2025

A special light buoy, *Fl.Y.2.5s*, exists in position 17° 21'.29 S 140° 43'.69 E.

Chart temporarily affected - Aus 303

410(T)/2025 AUSTRALIA - QUEENSLAND - North Stradbroke Island - Light buoy off station eastwards

Former Notice - 258(T)/2025 is cancelled

Department of Primary Industries

The special light buoy, *Fl.Y.3s FAD* (27° 41'.28 S 153° 36'.83 E), is off station and in position 27° 40'.55 S 153° 36'.17 E.

Chart temporarily affected - Aus 814

551(T)/2025 AUSTRALIA - QUEENSLAND - Moreton Bay - Chain Banks - Wreck

Maritime Safety Queensland Notice 256(T)/2025

A wreck marked by a special light buoy, *Fl.Y.2.5s*, exists in position 27° 23'.78 S 153° 18'.49 E.

Mariners are advised to navigate with caution in the area.

Chart temporarily affected - Aus 236

611(T)/2025 AUSTRALIA - QUEENSLAND - Mackay - Light buoys

Maritime Safety Queensland Notice 301(T)/2025

Special light buoys, *Fl.Y.3s*, exist in positions 21° 06'.38 S 149° 14'.52 E and 21° 06'.48 S 149° 14'.27 E.

Mariners are advised to navigate with caution in the area.

Chart temporarily affected - Aus 250

665(P)/2025 AUSTRALIA - QUEENSLAND - Old Reef - Rock
XOCEAN

An uncharted rock, with least depth 42m, has been reported in position 19° 26'.39 S 148° 05'.46 E.

Mariners are advised to navigate with caution in the area.

Charts will updated in due course.

Chart which will be affected - Aus 826

745(T)/2025 AUSTRALIA - QUEENSLAND - Capricorn Group - One Tree Island - Scientific instrument eastwards
Maritime Safety Queensland Notice 385(T)/2025

A special light buoy, *Fl(5)Y.20s*, exists in position 23° 28'.65 S 152° 12'.21 E.

Mariners are advised to navigate with caution in the area and not to use the buoy as a mooring.

Chart temporarily affected - Aus 490 - Aus 819

828(P)/2025 AUSTRALIA - QUEENSLAND - Karumba - Light buoys repositioned
Maritime Safety Queensland Notice 421(T)/2025

The light buoys have been repositioned as follows:

<i>Current position</i>	<i>New position</i>	<i>Remarks</i>
17° 26'.58 S 140° 44'.87 E	17° 26'.63 S 140° 44'.96 E	<i>Fl.R.4s EB2</i>
17° 26'.63 S 140° 44'.95 E	17° 26'.65 S 140° 45'.07 E	<i>Fl.R.4s EB4</i>
17° 26'.66 S 140° 44'.84 E	17° 26'.71 S 140° 44'.93 E	<i>Fl.G.4s EB3</i>
17° 26'.71 S 140° 44'.94 E	17° 26'.72 S 140° 45'.07 E	<i>Fl.G.4s EB5.</i>

Charts will be updated in due course.

Chart which will be affected - Aus 6

829(T)/2025 AUSTRALIA - QUEENSLAND - Moreton Bay - Scientific instruments
Maritime Safety Queensland Notice 416(T)/2025

Special light buoys, *Fl.Y.2s*, exist in positions 27° 19'.95 S 153° 09'.96 E and 27° 07'.31 S 153° 21'.89 E.

Special unlit buoys exist in positions 27° 20'.41 S 153° 14'.11 E and 27° 22'.07 S 153° 12'.04 E.

Mariners are advised to navigate with caution in the area.

Chart temporarily affected - Aus 236 - Aus 237

830(T)/2025 AUSTRALIA - QUEENSLAND - Moreton Bay - Spitfire Channel - Light beacon unlit
Maritime Safety Queensland Notice 162(T)/2023, 164(T)/2023

The light beacon, *Fl.Y.1.5s S1* (27° 02'.88 S 153° 15'.99 E), is unlit; a special light buoy, *Fl.Y.1.5s*, exists in situ.

Chart temporarily affected - Aus 236

872(T)/2025 AUSTRALIA - QUEENSLAND - Mackay - Virtual AIS
Maritime Safety Queensland Notice 437(T)/2025

A port lateral virtual AIS exists in position 21° 06'.38 S 149° 14'.16 E.

Chart temporarily affected - Aus 249 - Aus 250

873(T)/2025 AUSTRALIA - QUEENSLAND - Moreton Bay - Scientific instruments
Maritime Safety Queensland Notice 438(T)/2025

Special light buoys, *Fl.Y.2s*, exist in the following positions:

27° 16'.24 S 153° 13'.49 E
27° 10'.04 S 153° 18'.93 E

26° 56'.75 S 153° 11'.06 E.

Chart temporarily affected - Aus 236

874(T)/2025 AUSTRALIA - QUEENSLAND - Pearl Bay - Obstruction

Maritime Safety Queensland Notice 439(T)/2025

An obstruction exists, 1m below the surface, in position 22° 25'.37 S 150° 43'.66 E.

Chart temporarily affected - Aus 260 - Aus 820 - Aus 822

875(T)/2025 AUSTRALIA - QUEENSLAND - Upstart Bay - Light buoys off station

Former Notice - 444(T)/2025 is cancelled

Maritime Safety Queensland Notice 205(T)/2025

The following light buoys are off station:

<i>Position</i>	<i>Remarks</i>
19° 43'.59 S 147° 35'.96 E	starboard lateral light buoy, <i>Fl.G.3s</i>
19° 43'.59 S 147° 36'.37 E	port lateral light buoy, <i>Fl.R.4s</i>
19° 43'.35 S 147° 36'.78 E	port lateral light buoy, <i>Fl.R.1-5s.</i>

Mariners are advised to navigate with caution in the area.

Chart temporarily affected - Aus 826

908(T)/2025 AUSTRALIA - QUEENSLAND - Gladstone - Harbour works; restricted area

Former Notice - 746(T)/2025 is cancelled

Maritime Safety Queensland Notice 362(T)/2025, Notice 470(T)/2025

Works associated with the construction of a reclamation bund wall are in progress.

A restricted area exists bounded by the following positions:

23° 47'.00 S 151° 08'.98 E
23° 46'.82 S 151° 09'.32 E
23° 46'.05 S 151° 09'.45 E
23° 45'.88 S 151° 09'.74 E
23° 45'.40 S 151° 09'.07 E
23° 46'.10 S 151° 08'.56 E.

Light buoys, *Fl.Y.2-5s*, exist in the following positions:

23° 45'.87 S 151° 09'.70 E
23° 45'.82 S 151° 09'.63 E
23° 45'.77 S 151° 09'.56 E
23° 45'.69 S 151° 09'.44 E
23° 45'.60 S 151° 09'.33 E
23° 45'.52 S 151° 09'.21 E.

Mariners are advised to navigate with caution in the area.

Chart temporarily affected - Aus 245 - Aus 819

944(T)/2025 AUSTRALIA - QUEENSLAND - Point Cartwright to Lord Howe Rise - Cable laying operations

Gulf Agency Company (Australia)

Vessel *CS Dependable* is conducting cable laying operations between the following positions:

26° 39'.43 S 153° 06'.62 E
26° 36'.36 S 153° 10'.26 E
26° 37'.26 S 153° 13'.76 E
26° 55'.25 S 153° 40'.78 E
27° 03'.95 S 154° 45'.61 E
27° 50'.68 S 156° 00'.79 E
28° 22'.99 S 157° 16'.39 E
28° 43'.32 S 157° 29'.45 E
26° 44'.61 S 161° 22'.33 E.

Mariners are advised to navigate with caution in the area. 1M clearance requested.

Chart temporarily affected - Aus 236 - Aus 814 - Aus 815 - Aus 4602 (INT 602)

990(T)/2025 AUSTRALIA - QUEENSLAND - Dunk (Coonanglebah) Island - Scientific instrument southeastwards
Former Notice - 606(T)/2025 is cancelled
Maritime Safety Queensland Notice 497(T)/2025

A special light buoy, *Fl.Y.2.5s*, exists in position 17° 58'.45 S 146° 11'.66 E.

Chart temporarily affected - Aus 258 - Aus 828 - Aus 829

1031(P)/2025 AUSTRALIA - QUEENSLAND - Cape Upstart - Wreck northeastwards
XOCEAN

Latest survey indicates a wreck, least depth 29.7m, exists in position 19° 35'.47 S 147° 53'.72 E.

Charts will be updated in due course.

Chart which will be affected - Aus 826

1075(P)/2025 AUSTRALIA - QUEENSLAND - Great Barrier Reef - Joist Reef to Hydrographers Passage - Shoaling
LADS Flight

Latest survey shows shoaler depths than those charted may exist in an area bounded by the following positions:

19° 27'.1 S 149° 38'.9 E

20° 12'.2 S 149° 39'.1 E

20° 12'.2 S 150° 18'.5 E

19° 39'.2 S 150° 18'.5 E.

Charts will updated in due course.

Chart which will be affected - Aus 821 - Aus 825

52(T)/2026 AUSTRALIA - QUEENSLAND - Breaksea Spit - Light buoy unlit
Australian Maritime Safety Authority Auscoast Warning 351/2025

The north cardinal light buoy, *Q AIS Racon (G)* (24° 21'.14 S 153° 09'.11 E), is unlit.

Mariners are advised to navigate with caution in the area.

Chart temporarily affected - Aus 490 - Aus 816 - Aus 818

59(T)/2026 AUSTRALIA - QUEENSLAND - Great Sandy Strait - Scientific instruments
Former Notice - 18(T)/2026 is cancelled
Maritime Safety Queensland Notice 017(T)/2026

Special light buoys exists as follows:

<i>Position</i>	<i>Remarks</i>
25° 16'.19 S 152° 51'.05 E	<i>Fl.Y.2.5s</i>
25° 16'.82 S 152° 51'.23 E	<i>Fl.Y.2.5s</i>
25° 07'.27 S 152° 47'.99 E	<i>Fl(5)Y.20s.</i>

Mariners are advised to navigate with caution in the area.

Chart temporarily affected - Aus 817

105(T)/2026 AUSTRALIA - QUEENSLAND - Bribie Island - Pumicestone Channel - Dredging operations
Former Notice - 871(T)/2025 is cancelled
Maritime Safety Queensland Notice 50(T)/2026

Dredging operations are in progress in an area bounded by the following positions:

26° 50'.29 S 153° 07'.73 E

26° 49'.04 S 153° 07'.96 E

26° 48'.92 S 153° 07'.44 E

26° 50'.27 S 153° 07'.21 E.

A floating and submerged pipeline, marked by pink and yellow buoys, exists in the area.

Mariners should navigate with extreme caution in the area and stay within the marked navigation channel due to constant moving of sandbanks.

Chart temporarily affected - Aus 236

108(T)/2026 AUSTRALIA - QUEENSLAND - Gladys Inlet - Light buoy off station

Maritime Safety Queensland Notice 33(T)/2026

The port lateral light buoy, *Fl.R.3s* (17° 30'.43 S 146° 04'.87 E), is off station.

Mariners are advised to navigate with caution in the area.

Chart temporarily affected - Aus 258

148(T)/2026 AUSTRALIA - QUEENSLAND - Cleveland Bay - Scientific instruments

Former Notice - 57(T)/2026 is cancelled

Maritime Safety Queensland Notice 60(T)/2026

Special light buoys, *Fl.Y.2.5s*, exist in the following positions:

19° 06'.45 S 146° 33'.86 E

19° 07'.34 S 146° 52'.92 E

19° 09'.36 S 146° 52'.07 E

19° 11'.81 S 146° 49'.07 E

19° 14'.80 S 146° 48'.90 E.

Mariners are advised to navigate with caution in the area.

Chart temporarily affected - Aus 256 - Aus 827

149(T)/2026 AUSTRALIA - QUEENSLAND - Fitzroy River - Beacon destroyed

Maritime Safety Queensland Notice 077(T)/2026

The port lateral light beacon, *Fl.R.3s FR2* (23° 32'.54 S 150° 54'.29 E), has been destroyed.

Mariners are advised to navigate with caution in the area.

Chart temporarily affected - Aus 265

150(T)/2026 AUSTRALIA - QUEENSLAND - Gladstone - South Channel - Light beacon destroyed

Former Notice - 58(T)/2026 is cancelled

Maritime Safety Queensland Notice 66(T)/2026

The light beacon, *Fl.R.4s* (23° 54'.17 S 151° 23'.55 E), has been destroyed and partly removed below the water surface; a port lateral light buoy, *Fl.R.4s*, exists in situ.

Mariners are advised to navigate with caution in the area.

Chart temporarily affected - Aus 246

151(P)/2026 AUSTRALIA - QUEENSLAND - Slade Island - Shoaling southeastwards

Maritime Safety Queensland

Latest survey indicates shoaler depths than those charted may exist in an area bounded by the following positions:

21° 05'.92 S 149° 15'.22 E

21° 06'.07 S 149° 15'.27 E

21° 06'.14 S 149° 14'.99 E

21° 05'.99 S 149° 14'.93 E.

Mariners are advised to navigate with caution in the area.

Charts will be updated in due course.

Chart which will be affected - Aus 250

202(T)/2026 AUSTRALIA - QUEENSLAND - Brisbane River - Hamilton Reach - Harbour works

Maritime Safety Queensland Notice 079(T)/2026

Works associated with the demolition of a 400m section of Hamilton Wharf in the vicinity of position 27° 26'.57 S 153° 04'.46 E are underway.

8 special light buoys, *Fl.Y.1.5s*, mark the anchors of a silt curtain around the works.

Mariners are advised to navigate with caution in the area.

Chart temporarily affected - Aus 237

204(T)/2026 AUSTRALIA - QUEENSLAND - Mackay - Scientific instrument

Former Notice - 609(T)/2025 is cancelled

Maritime Safety Queensland Notice 75(T)/2026

A special light buoy, *Fl(5)Y.20s*, exists in position 21° 06'.88 S 149° 14'.58 E.

Mariners are advised to navigate with caution in the area.

Chart temporarily affected - Aus 250

247(T)/2026 AUSTRALIA - QUEENSLAND - Brisbane River - Construction works

Maritime Safety Queensland Notice 099(T)/2026

Construction works have commenced at the Port North Common User Berth on the Brisbane River. The works are being carried out from the heavy lift barge *Maeve Anne* and its support craft, in the vicinity of position 27° 23'.027 S, 153° 09'.280 E.

Flashing lights will be displayed at the four corners of the barge and it will be secured using four anchors, each marked with buoys fitted with flashing yellow lights. The works are scheduled to occur between 0600 and 1800 hours, Monday to Saturday.

During working hours, the barge and support craft will monitor VHF Ch 13 and Ch 16. Mariners are advised to navigate with caution when transiting the area and to pass at a slow speed when requested.

Chart temporarily affected - Aus 237

253(P)/2026 AUSTRALIA - TORRES STRAIT - Horn Island to Thursday Island - Shoaling

Maritime Safety Queensland

Latest survey indicates shoaler depths than those charted may exist in the vicinity of positions 10° 35'.46 S 142° 14'.75 E and 10° 35'.18 S 142° 13'.37 E.

Mariners are advised to navigate with caution in the area.

Charts will be updated in due course.

Chart which will be affected - Aus 299

288(T)/2026 AUSTRALIA - QUEENSLAND - Bundaberg - Burnett River - Dredging operations

Maritime Safety Queensland Notice 142(T)/2026

Dredge *Brisbane* and support vessel *Pacific Conquest* are conducting dredging and bed levelling operations in the shipping channels, including swing basins and berth pockets, between the Sugar Berth (24° 46'.27 S 152° 22'.91 E) and the outer light beacons (24° 45'.21 S 152° 28'.12 E).

The vessels will display appropriate lights and shapes and will monitor VHF Ch 13 and Ch 16.

Mariners are advised to navigate with caution in the area.

Chart temporarily affected - Aus 242 - Aus 817 - Aus 818

289(T)/2026 AUSTRALIA - QUEENSLAND - Caloundra Head - Scientific instruments

Former Notice - 56(T)/2026 is cancelled

Maritime Safety Queensland Notice 141(T)/2026

Special light buoys, *Fl. Y.3s*, exist in the following positions:

26° 50'.55 S 153° 08'.27 E

26° 48'.97 S 153° 08'.67 E.

Mariners are advised to navigate with caution in the area.

Chart temporarily affected - Aus 236 - Aus 815

291(T)/2026 AUSTRALIA - QUEENSLAND - Magnetic Island - Horseshoe Bay - Wreck

Maritime Safety Queensland Notice 130(T)/2026

A stranded wreck marked by a special light buoy, *Fl. Y.3s*, exists in position 19° 06'.59 S 146° 51'.56 E.

Mariners are advised to navigate with caution in the area.

Chart temporarily affected - Aus 256

333(T)/2026 AUSTRALIA - QUEENSLAND - Townsend Island - Entry prohibited area

Maritime Safety Queensland NTM 170(T)/2026

During the period 22 April 2026 to 22 June 2026, live firing will be conducted. Entry is prohibited to all vessels in an area bounded by the following positions:

22° 12'.28 S 150° 22'.50 E

22° 10'.02 S 150° 30'.06 E

22° 15'.28 S 150° 38'.10 E

22° 18'.98 S 150° 33'.98 E

22° 19'.20 S 150° 26'.81 E.

Mariners are advised to keep clear of this area.

Chart temporarily affected - Aus 260 - Aus 367 - Aus 822

NORTHERN TERRITORY

183(T)/2022 INDIAN OCEAN - Christmas Island - Mooring buoy off station

L Mioceovich

The mooring buoy (10° 25'.92 S 105° 39'.5 E) is off station and is currently in position 10° 26'.48 S 105° 39'.45 E.

Chart temporarily affected - Aus 920

867(T)/2023 INDIAN OCEAN - Roo Rise - Light buoy off station

Australian Bureau of Meteorology

The special light buoy, *Fl.Y.2s* (12° 19'.20 S 108° 30'.75 E), is off station.

Chart temporarily affected - Aus 4708 (INT 708) - Aus 4723 (INT 723)

904(T)/2023 INDIAN OCEAN - Cocos Islands - Light buoy

LINX

A special light buoy, *Fl.Y.2.5s*, exists in position 12° 08'.65 S 96° 51'.95 E.

Chart temporarily affected - Aus 607

532(T)/2024 AUSTRALIA - NORTHERN TERRITORY - Apsley Strait - Medina Inlet - Light buoys off station

Former Notice - 293(T)/2024 is cancelled

Northern Territory Government Notice 11(T)/2024

The following light buoys are off station:

<i>Position</i>	<i>Remarks</i>
11° 45'.85 S 130° 39'.80 E	<i>Fl.R.4s</i>
11° 46'.36 S 130° 39'.99 E	<i>Fl.R.4s</i>
11° 51'.65 S 130° 35'.07 E	<i>Fl.G.4s.</i>

Chart temporarily affected - Aus 23

909(T)/2024 AUSTRALIA - NORTHERN TERRITORY - Bathurst Island - Tide gauges; buoys westwards

Former Notice - 874(T)/2024 is cancelled

MMA Offshore , Tidewater Offshore Operations

Post hydrographic survey, subsurface tide gauges and buoys may exist in the vicinity of the following positions:

10° 58'.5 S 129° 00'.0 E
10° 58'.4 S 129° 11'.7 E
10° 57'.7 S 129° 23'.5 E
11° 10'.1 S 129° 00'.3 E
11° 08'.1 S 129° 12'.4 E
11° 06'.3 S 129° 31'.2 E
11° 21'.7 S 129° 03'.9 E
11° 18'.6 S 129° 15'.2 E
11° 15'.9 S 129° 24'.5 E
11° 11'.8 S 129° 44'.0 E
11° 24'.4 S 129° 35'.6 E
11° 23'.0 S 129° 47'.7 E
11° 35'.7 S 129° 42'.8 E
11° 33'.6 S 129° 52'.5 E.

Mariners are advised to navigate with caution in the area.

Chart temporarily affected - Aus 309 - Aus 310 - Aus 311

39(T)/2025 AUSTRALIA - NORTHERN TERRITORY - Fish Reef - Light unlit

Northern Territory Government Notice 23(T)/2024

The light, *LFl.WR.10s 10/8M* (12° 25'.93 S 130° 26'.56 E), is unlit.

Chart temporarily affected - Aus 309 - Aus 316

40(T)/2025 AUSTRALIA - NORTHERN TERRITORY - Orontes Reef - Obstruction

Northern Territory Government Notice 2(T)/2025

A ghost net exists in position 11° 02'.88 S 132° 04'.94 E. An electronic beacon has been attached to the ghost net.

Mariners are advised to navigate with caution in the area.

Chart temporarily affected - Aus 18 - Aus 721

371(T)/2025 AUSTRALIA - NORTHERN TERRITORY - Darwin - Scientific instruments

Northern Territory Government Notice 41(T)/2025

Special light buoys, *Fl.Y.4s*, exist in positions 12° 29'.58 S 130° 54'.17 E and 12° 29'.72 S 130° 54'.32 E.

Chart temporarily affected - Aus 26

448(T)/2025 AUSTRALIA - NORTHERN TERRITORY - Lynedoch Bank - Light buoy northwestwards

Santos

A special light buoy, *Fl.Y*, exists in position 9° 49'.28 S 130° 16'.17 E.

Chart temporarily affected - Aus 310

491(T)/2025 AUSTRALIA - NORTHERN TERRITORY - Darwin - Harbour works; dredging operations

Former Notice - 447(T)/2025 is cancelled

Northern Territory Government Notice 57/2025

A closed waters area marked by special buoys for dredging and harbour works has been established in the vicinity of position 12° 29'.50 S 130° 53'.75 E.

Entry into or transit through closed waters is prohibited to all vessels except those authorised.

Mariners are advised to navigate with caution in the area.

Chart temporarily affected - Aus 26

667(T)/2025 AUSTRALIA - NORTHERN TERRITORY - Darwin - Dredging operations

Northern Territory Government Notice 83(T)/2025

Dredge Ngurunderi and support vessels are conducting dredging operations in the vicinity of position 12° 30'.06 S 130° 53'.64 E.

A submerged pipeline marked by special light buoys, *Q.Y*, and a lit floating pontoon exist between the dredge and position 12° 29'.40 S 130° 53'.52 E.

Mariners are advised to navigate with caution in the area.

Chart temporarily affected - Aus 26

668(T)/2025 AUSTRALIA - NORTHERN TERRITORY - Emu Reefs - Obstruction

Northern Territory Government Notice 26/2025

A ghost net exists in position 13° 47'.70 S 129° 27'.54 E.

Mariners are advised to navigate with caution in the area.

Chart temporarily affected - Aus 316

669(T)/2025 AUSTRALIA - TIMOR SEA - Margaret Harries Banks - Survey operations

Revelare Hydrospatial

Survey vessel *7-Oceans* is conducting survey operations in an area bounded by the following positions:

10° 24'.23 S 128° 37'.84 E
10° 16'.32 S 128° 50'.52 E
10° 34'.47 S 129° 02'.39 E
11° 02'.06 S 128° 19'.80 E
11° 17'.04 S 128° 15'.48 E
11° 10'.16 S 127° 40'.58 E
11° 03'.71 S 127° 39'.06 E
10° 28'.89 S 128° 12'.45 E
10° 16'.64 S 128° 32'.95 E.

Tide gauges marked by special light buoys, *Fl. Y. 1-5s*, exist in the following positions:

11° 07'.3 S 127° 36'.3 E
10° 53'.6 S 127° 50'.3 E
10° 45'.3 S 127° 59'.7 E
10° 31'.5 S 128° 12'.0 E
10° 22'.7 S 128° 27'.3 E
10° 08'.1 S 128° 50'.3 E
10° 19'.6 S 128° 57'.0 E
10° 32'.0 S 128° 39'.7 E
10° 43'.0 S 128° 23'.5 E
10° 53'.1 S 128° 11'.9 E
11° 02'.3 S 128° 01'.3 E
11° 15'.6 S 127° 49'.0 E
11° 21'.7 S 128° 05'.8 E
11° 12'.2 S 128° 20'.0 E
11° 00'.8 S 128° 24'.2 E
10° 51'.4 S 128° 38'.4 E
10° 44'.0 S 128° 50'.1 E
10° 35'.7 S 129° 03'.7 E.

Mariners are advised to navigate with caution in the area.

Chart temporarily affected - Aus 309 - Aus 310 - Aus 311 - Aus 315

753(T)/2025 AUSTRALIA - NORTHERN TERRITORY - Darwin - Light buoy removed
Northern Territory Government

The west cardinal light buoy, *Q(9)15s* (12° 30'.14 S 130° 53'.68 E), has been temporarily removed.

Chart temporarily affected - Aus 26

799(T)/2025 INDIAN OCEAN - Seringapatam Reef to Christmas Island - Survey operations
Gulf Agency Company (Australia)

Vessel *Ocean Titan* is conducting survey operations between the following positions:

8° 43'.84 S 104° 59'.69 E
13° 52'.75 S 105° 07'.68 E;
and
13° 26'.87 S 121° 53'.69 E
13° 59'.58 S 119° 59'.46 E
12° 50'.71 S 113° 32'.45 E
13° 12'.76 S 110° 18'.59 E
9° 52'.41 S 105° 36'.84 E
9° 34'.61 S 102° 17'.17 E.

Mariners are advised to navigate with caution in the area.

Chart temporarily affected - Aus 322 - Aus 400 - Aus 608 - Aus 4060 (INT 60) - Aus 4070 (INT 70) - Aus 4071 (INT 71) - Aus 4603 (INT 603) - Aus 4708 (INT 708) - Aus 4722 (INT 722) - Aus 4723 (INT 723)

877(T)/2025 AUSTRALIA - NORTHERN TERRITORY - Charles Point - Obstruction northeastwards
Northern Territory Government Notice 36/2025

A ghost net exists in position 12° 21'.58 S 130° 37'.66 E.

Mariners are advised to navigate with caution in the area.

Chart temporarily affected - Aus 25

913(T)/2025 AUSTRALIA - NORTHERN TERRITORY - Darwin - Scientific instruments

Former Notice - 680(T)/2024 is cancelled

Northern Territory Government Notice 69(T)/2024

Special light buoys, *Fl. Y. 1-5s*, exist in the following positions:

12° 29'.50 S 130° 53'.75 E

12° 29'.67 S 130° 53'.80 E

12° 29'.67 S 130° 54'.15 E

12° 29'.42 S 130° 54'.14 E.

Chart temporarily affected - Aus 26

914(P)/2025 AUSTRALIA - NORTHERN TERRITORY - Goulburn Islands - Shoaling

Cyan Renewables

Latest survey indicates shoaler depths than those charted exist in the vicinity of Sand Point (11° 33'.05 S 133° 22'.77 E) and Ngurrugu Point (11° 34'.68 S 133° 24'.59 E).

Mariners are advised to navigate with caution in the area.

Chart which will be affected - Aus 719

948(T)/2025 AUSTRALIA - NORTHERN TERRITORY - Goulburn Islands - Wreck

Cyan Renewables

A wreck, least depth *20₀m*, exists in position 11° 33'.29 S 133° 35'.92 E and 11° 33'.01 S 133° 40'.30 E.

Chart temporarily affected - Aus 719

996(T)/2025 AUSTRALIA - NORTHERN TERRITORY - Darwin - Scientific instruments

Former Notice - 910(T)/2024 is cancelled

Northern Territory Government Notice 116(T)/2025

Special light buoys, *Fl. Y. 4s*, exist in the following positions:

12° 29'.26 S 130° 47'.99 E

12° 32'.91 S 130° 52'.50 E

12° 30'.09 S 130° 52'.48 E

12° 29'.72 S 130° 52'.96 E.

Chart temporarily affected - Aus 25 - Aus 26

1036(T)/2025 AUSTRALIA - NORTHERN TERRITORY - WESTERN AUSTRALIA - Darwin to Eugene McDermont Shoal - Geotechnical and geophysical operations westwards

INPEX

On or about 3 December 2025, vessel *Offshore Surveyor* will be conducting geotechnical and geophysical survey operations in an area bounded by the following positions:

12° 30'.09 S 129° 29'.87 E

12° 53'.92 S 129° 46'.87 E

12° 53'.75 S 124° 49'.68 E

12° 44'.45 S 124° 37'.02 E.

The vessel will display appropriate lights and shapes and will monitor VHF Ch 16.

Mariners are advised to navigate with caution in the area.

Chart temporarily affected - Aus 309 - Aus 314 - Aus 315 - Aus 316 - Aus 319

1037(T)/2025 AUSTRALIA - TIMOR SEA - Sahul Banks - Subsea operations

Department of Industry, Science and Resources

On or about 18 December 2025, works associated with the decommissioned FPSO *Northern Endeavour* (10° 36'.89 S 125°

59'.13 E) involving removal of buoyancy modules will take place.

Mariners should navigate with caution in the area.

Chart temporarily affected - Aus 312

1077(T)/2025 AUSTRALIA - TIMOR SEA - Sahul Banks - Subsea operations

DOF Management

On or about 22 December 2025, vessel *Skandi Hercules* and an ROV will be conducting subsea operations in the vicinity of position 10° 36'.88 S 125° 59'.14 E.

Mariners are advised to navigate with caution in the area. 500m clearance requested.

Chart temporarily affected - Aus 312

20(T)/2026 AUSTRALIA - NORTHERN TERRITORY - Cuthbert Point - Tide gauges; light buoys northeastwards

Cyan Renewables

Tide gauges, 1m above the seabed, marked by special light buoys exist in positions 11° 37'.18 S 133° 56'.54 E and 11° 37'.16 S 133° 56'.66 E.

Mariners are advised to navigate with caution in the area.

Chart temporarily affected - Aus 718 - Aus 719

62(T)/2026 AUSTRALIA - NORTHERN TERRITORY - Beagle Gulf - Fenton Patches - Fish aggregating devices

Former Notice - 19(T)/2026 is cancelled

Northern Territory Government Notice 001(T)/2026

Special light buoys, *Fl. Y. 4s FAD*, exist in the following positions:

12° 06'.66 S 130° 34'.13 E

12° 08'.93 S 130° 44'.83 E

12° 09'.50 S 130° 44'.83 E

12° 10'.30 S 130° 38'.50 E.

Chart temporarily affected - Aus 309

153(T)/2026 AUSTRALIA - NORTHERN TERRITORY - Groote Eylandt - Bartalumba Bay to Milner Bay - Mooring buoys

Former Notice - 111(T)/2026 is cancelled

Northern Territory Government Notice 33(T)/2025, 35(T)/2025, 3(T)/2026, 4(T)/2026

Daytime mooring buoys, *Fl. Y. 3s*, exist in the following positions:

13° 48'.44 S 136° 28'.87 E

13° 48'.35 S 136° 28'.38 E

13° 48'.07 S 136° 28'.04 E

13° 48'.15 S 136° 27'.14 E

13° 48'.56 S 136° 27'.58 E

13° 48'.77 S 136° 27'.80 E

13° 48'.89 S 136° 28'.27 E.

Daytime mooring buoys, *Fl. Y. 5s*, exist in positions 13° 51'.08 S 136° 24'.57 E and 13° 51'.19 S 136° 24'.66 E.

Chart temporarily affected - Aus 14

205(T)/2026 AUSTRALIA - NORTHERN TERRITORY - Groote Eylandt - Milner Bay - Mooring buoys

Northern Territory Government Notice 6(T)/2026, 7(T)/2026

Private lit mooring buoys, for GEMCO contractors only, exist as follows:

Position *Remarks*

13° 51'.29 S 136° 24'.79 E *Fl. Y. 3s*

13° 51'.36 S 136° 24'.81 E *Fl. Y. 3s*

13° 51'.65 S 136° 25'.03 E *Q.*

Chart temporarily affected - Aus 14

206(T)/2026 AUSTRALIA - TIMOR SEA - Flat Top Bank - Survey operations southwards
Cyan Renewables

MV *Offshore Solution* is conducting geotechnical survey operations in an area bounded by the following positions:

13° 06'.94 S 128° 26'.79 E
13° 06'.94 S 129° 33'.21 E
12° 18'.11 S 129° 33'.11 E
12° 18'.11 S 128° 26'.89 E.

Mariners are advised to navigate with caution in the area. 1M clearance requested.

Chart temporarily affected - Aus 309 - Aus 315 - Aus 316 - Aus 318

207(T)/2026 AUSTRALIA - TIMOR SEA - Flat Top Bank - Scientific instruments southwards
RPS Group

Special light buoys, Q(5)Y.20s, exist in positions 12° 48'.07 S 128° 40'.13 E and 12° 49'.15 S 128° 40'.14 E.

A subsurface scientific instrument, 10m below the surface, exists in position 12° 48'.61 S 128° 40'.15 E.

Subsurface scientific instruments, 20m above the seabed, exist in the following positions:

12° 39'.70 S 129° 00'.18 E
12° 34'.47 S 129° 18'.18 E
12° 29'.86 S 129° 29'.14 E
12° 24'.61 S 129° 48'.55 E.

Chart temporarily affected - Aus 309 - Aus 315 - Aus 316

335(T)/2026 AUSTRALIA - NORTHERN TERRITORY - WESTERN AUSTRALIA - Darwin to Seringapatam Reef - Survey operations

EGS Survey Pty Ltd

On or about 20 April 2026, vessel *Shark 1*, with a 500m towed array, will begin geophysical and geotechnical survey operations along a 500m wide corridor between the following positions:

12° 26'.38 S 130° 47'.21 E
12° 20'.41 S 130° 41'.68 E
12° 13'.99 S 130° 26'.17 E
12° 20'.80 S 129° 03'.49 E
12° 29'.07 S 126° 12'.14 E
13° 20'.83 S 122° 00'.30 E.

The vessels will display appropriate lights and shapes and monitor VHF Ch 16.

Mariners are advised to keep a safe distance and navigate with caution in the area.

Chart temporarily affected - Aus 25 - Aus 309 - Aus 314 - Aus 315 - Aus 316 - Aus 319 - Aus 322 - Aus 4603 (INT 603) - Aus 4722 (INT 722)

348(T)/2026 INDIAN OCEAN - Seringapatam Reef to Christmas Island - Geotechnical and geophysical operations

EGS Survey Pty Ltd

On or about 20 April 2026, vessel *Ocean Vanguard*, with a 500m towed array, will begin geophysical and geotechnical survey operations in an area bounded by the following positions:

10° 25'.55 S 101° 47'.53 E
13° 33'.22 S 110° 41'.13 E
14° 12'.14 S 117° 23'.68 E
14° 15'.84 S 120° 34'.27 E
13° 29'.11 S 123° 54'.04 E
12° 35'.70 S 123° 44'.90 E
13° 16'.69 S 120° 23'.86 E
13° 16'.02 S 117° 24'.02 E
12° 13'.92 S 111° 03'.39 E
9° 06'.90 S 102° 44'.48 E.

The vessels will display appropriate lights and shapes and monitor VHF Ch 16.

Mariners are advised to keep a safe distance and navigate with caution in the area.

Chart temporarily affected - Aus 314 - Aus 319 - Aus 322 - Aus 400 - Aus 608 - Aus 920 - Aus 4603 (INT 603) - Aus 4708 (INT 708) - Aus 4722 (INT 722) - Aus 4723 (INT 723)

WESTERN AUSTRALIA

1078(P)/2015 AUSTRALIA - WESTERN AUSTRALIA - East Holothuria Reef - Shoaling HMAS Mermaid

Depths less than 6m have been reported in the vicinity of position 13° 33'.6 S 126° 10'.8 E.

Mariners are advised to navigate with caution in the area.

Chart which will be affected - Aus 318 - Aus 319 - Aus 727 - Aus 728

291(T)/2019 AUSTRALIA - WESTERN AUSTRALIA - Barrow Island - Well abandonment works northwestwards Chevron Australia

Sixteen anchors and mooring lines have been installed around the well in position 20° 24'.49 S 114° 50'.95 E.

Mariners are advised to navigate with caution in the area.

Chart temporarily affected - Aus 328

212(T)/2020 AUSTRALIA - WESTERN AUSTRALIA - Rottnest Island - Scientific instruments northwestwards CSIRO

Subsurface scientific instruments exist as follows:

<i>Position</i>	<i>Depth below surface</i>
31° 38'.8 S 115° 11'.8 E	24m
31° 43'.7 S 115° 02'.5 E	23m
31° 45'.9 S 114° 57'.9 E	496m
31° 59'.0 S 115° 13'.7 E	180m
31° 59'.4 S 115° 23'.1 E	22m
32° 00'.0 S 115° 25'.0 E	46m

Chart temporarily affected - Aus 754

623(T)/2022 AUSTRALIA - WESTERN AUSTRALIA - Bunbury - Koombana Bay - Harbour works Department of Transport WA Notice 1852/2022

On or about 17 August 2022, works associated with the demolition and construction of the boat ramp in the vicinity of position 33° 18'.71 S 115° 38'.28 E will commence.

The works area will be marked by special light buoys.

The barge *TMC1* and support vessels will be conducting piling operations and unlit piles may exist in the area.

All vessels will display appropriate lights and shapes and will monitor VHF Ch 16.

The boat ramp will be closed for the duration of the works.

Mariners are advised to navigate with caution in the area.

Chart temporarily affected - Aus 115

1032(T)/2022 AUSTRALIA - WESTERN AUSTRALIA - Geographe Bay - Scientific instruments *Former Notice - 800(T)/2022 is cancelled* Department of Transport WA Notice 2792/2022

Special light buoys, *Fl. Y.2.5s*, exist in the following positions:

33° 35'.49 S 115° 06'.99 E
33° 36'.01 S 115° 14'.99 E
33° 37'.62 S 115° 20'.28 E.

Chart temporarily affected - Aus 755

1036(T)/2022 AUSTRALIA - WESTERN AUSTRALIA - Mullaloo - Scientific instruments

Department of Transport WA Notice 5463/2022

Scientific instruments, 4m below the surface, exist in positions 31° 45'.82 S 115° 42'.64 E and 31° 47'.43 S 115° 42'.34 E.

Chart temporarily affected - Aus 754

293(T)/2023 AUSTRALIA - WESTERN AUSTRALIA - Dampier Archipelago - Legendre Island - Scientific instrument northwards

Former Notice - 366(T)/2022 is cancelled
O2 Marine

A scientific instrument exists on the seabed in position 20° 17'.89 S 116° 51'.58 E.

Chart temporarily affected - Aus 57 - Aus 327

**367(T)/2023 AUSTRALIA - WESTERN AUSTRALIA - Gantheaume Bay - Scientific instrument northwestwards
GHD**

A subsurface scientific instrument, 0.5m above the seabed, exists in position 27° 26'.89' S 113° 56'.97' E.

Chart temporarily affected - Aus 332

**535(T)/2023 AUSTRALIA - WESTERN AUSTRALIA - Bonaparte Archipelago - Bernouilli Island - Obstruction
Australian Maritime Safety Authority**

An obstruction has been reported in position 14° 59'.56 S 124° 45'.49 E.

Mariners are advised to navigate with caution in the area.

Chart temporarily affected - Aus 730

627(T)/2023 AUSTRALIA - WESTERN AUSTRALIA - Lagrange Bay - Scientific instruments

Department of Transport WA Notice 5749(T)/2023

Subsurface scientific instruments exist in the following positions:

18° 35'.12 S 121° 44'.06 E
18° 35'.54 S 121° 44'.98 E
18° 35'.85 S 121° 45'.81 E
18° 36'.01 S 121° 43'.89 E
18° 36'.43 S 121° 46'.98 E
18° 36'.48 S 121° 47'.17 E
18° 36'.49 S 121° 42'.92 E
18° 36'.57 S 121° 46'.91 E
18° 36'.59 S 121° 45'.45 E
18° 37'.00 S 121° 44'.32 E
18° 37'.00 S 121° 46'.69 E
18° 37'.05 S 121° 46'.95 E
18° 37'.20 S 121° 46'.31 E
18° 37'.25 S 121° 47'.09 E
18° 37'.66 S 121° 45'.68 E
18° 37'.81 S 121° 43'.16 E
18° 38'.06 S 121° 44'.56 E
18° 38'.53 S 121° 46'.45 E
18° 38'.72 S 121° 45'.65 E
18° 38'.83 S 121° 46'.83 E
18° 39'.12 S 121° 44'.44 E
18° 39'.15 S 121° 43'.16 E
18° 39'.47 S 121° 46'.19 E
18° 39'.76 S 121° 45'.30 E.

Mariners are advised to navigate with caution in the area.

Chart temporarily affected - Aus 324

630(T)/2023 AUSTRALIA - WESTERN AUSTRALIA - Torbay to King George Sound - Scientific instruments

Department of Transport WA Notice 5742/2023

Scientific instruments marked by special light buoys, *Fl. Y.3s*, exist in the following positions:

35° 04'.92 S 117° 49'.18 E

35° 05'.38 S 117° 57'.75 E

35° 05'.45 S 117° 57'.76 E.

Chart temporarily affected - Aus 118

767(T)/2023 AUSTRALIA - WESTERN AUSTRALIA - Carnarvon - Obstructions

Department of Transport WA Notice 5769/2023

Pylons, 30cm below the surface, exist in the vicinity of position 24° 54'.35 S 113° 38'.61 E.

Mariners are advised to navigate with caution in the area.

Chart temporarily affected - Aus 73

774(T)/2023 AUSTRALIA - WESTERN AUSTRALIA - Rottnest Island - Thomson Bay - Rock

Department of Transport WA Notice 5796/2023

A rock outcrop has been reported in position 31° 59'.82 S 115° 32'.64 E.

Mariners are advised to navigate with caution in the area.

Chart temporarily affected - Aus 112

820(T)/2023 AUSTRALIA - WESTERN AUSTRALIA - Browse Island - Light altered northwestwards

Australian Maritime Safety Authority Auscoast Warning 213/2023

The light, *Mo(U)15s 15M* (13° 56'.37 S 123° 17'.87 E), has been temporarily altered to *Mo(U)15s 10M*.

Chart temporarily affected - Aus 319 - Aus 320 - Aus 4603 (INT 603) - Aus 4722 (INT 722)

822(T)/2023 AUSTRALIA - WESTERN AUSTRALIA - Dampier - Mermaid Sound - Scientific instrument

Pilbara Ports Authority Notice D23(T)/2023

A special light buoy, *Fl(5)Y.20s*, exists in position 20° 30'.81 S 116° 45'.56 E.

Chart temporarily affected - Aus 57

900(T)/2023 AUSTRALIA - WESTERN AUSTRALIA - Lowendal Islands - Light altered

Santos

The light, *Fl.3s* (20° 38'.04 S 115° 34'.34 E), has been temporarily altered to *Fl. Y.2·5s*.

Chart temporarily affected - Aus 65 - Aus 742

1065(T)/2023 AUSTRALIA - WESTERN AUSTRALIA - Fremantle - Arthur Head - Scientific instrument

Department of Transport WA Notice 5895/2023

A subsurface scientific instrument, 5.5m below the surface, exists in positions 32° 03'.31 S 115° 44'.16 E.

Chart temporarily affected - Aus 112 - Aus 117

25(T)/2024 AUSTRALIA - WESTERN AUSTRALIA - Dampier Archipelago - Brigadier Islands - Light buoy northwards

MetOcean

A special light buoy, *Fl(5)Y.20s*, exists in position 20° 16'.78 S 116° 33'.71 E.

Chart temporarily affected - Aus 327 - Aus 742

31(T)/2024 AUSTRALIA - WESTERN AUSTRALIA - Laurance Reef to Quinns Rocks - Scientific instruments

Department of Transport WA Notice 5902/2023

Special light buoys, *Fl.Y.2-5s*, exist in the following positions:

31° 39'.60 S 115° 39'.88 E

31° 40'.63 S 115° 40'.24 E

31° 33'.28 S 115° 37'.30 E.

Chart temporarily affected - Aus 754

33(T)/2024 AUSTRALIA - WESTERN AUSTRALIA - Norwegian Bay - Beacon obscured

Department of Transport WA Notice 5805/2023

The rear leading beacon is obscured and currently not visible.

The recommended track may no longer indicate the best passage through the reef.

Mariners are advised to navigate with caution in the area.

Chart temporarily affected - Aus 745

70(T)/2024 AUSTRALIA - WESTERN AUSTRALIA - Cockburn Sound - Medina Channel - Light beacon destroyed

Fremantle Ports Notice 15/2023

The port lateral light beacon, *Fl.R.2s C* (32° 09'.90 S 115° 45'.51 E), has been destroyed; a port lateral light buoy, *Fl.R.2s*, exists in situ.

Chart temporarily affected - Aus 117

167(T)/2024 AUSTRALIA - WESTERN AUSTRALIA - Rottnest Island - Point Clune - Scientific instrument northwards MMA Offshore

A special light buoy, *Fl.Y*, exists in position 31° 57'.072 S 115° 31'.62 E.

Chart temporarily affected - Aus 112 - Aus 754

223(T)/2024 AUSTRALIA - WESTERN AUSTRALIA - Bateman Bay to Bills Bay - Scientific instruments

Sydney Institute of Marine Science

Subsurface scientific instruments exist as follows:

<i>Position</i>	<i>Metres below surface</i>
23° 02'.58 S 113° 47'.45 E	4.9
23° 02'.86 S 113° 47'.16 E	14.6
23° 02'.88 S 113° 49'.06 E	13
23° 02'.89 S 113° 47'.53 E	17.2
23° 02'.89 S 113° 47'.91 E	18.1
23° 02'.89 S 113° 48'.28 E	14.2
23° 02'.89 S 113° 48'.67 E	17.1
23° 05'.09 S 113° 48'.53 E	8.7
23° 07'.27 S 113° 45'.09 E	3
23° 07'.28 S 113° 45'.43 E	7
23° 07'.42 S 113° 41'.37 E	66
23° 07'.45 S 113° 41'.83 E	66
23° 07'.48 S 113° 44'.95 E	3
23° 07'.50 S 113° 42'.28 E	64
23° 07'.57 S 113° 42'.72 E	60
23° 07'.61 S 113° 43'.58 E	42
23° 07'.62 S 113° 43'.15 E	52
23° 07'.64 S 113° 44'.08 E	30
23° 07'.64 S 113° 46'.13 E	2
23° 08'.15 S 113° 45'.22 E	8.

Chart temporarily affected - Aus 745 - Aus 746

224(T)/2024 AUSTRALIA - WESTERN AUSTRALIA - Cape Range - Tantabiddi - Scientific instruments

Sydney Institute of Marine Science

Subsurface scientific instruments exist as follows:

<i>Position</i>	<i>Metres below surface</i>
21° 52'.83 S 113° 54'.33 E	86
21° 53'.03 S 113° 54'.67 E	84
21° 53'.31 S 113° 55'.03 E	75
21° 53'.46 S 113° 55'.44 E	57
21° 53'.71 S 113° 55'.79 E	36.

Chart temporarily affected - Aus 328 - Aus 329 - Aus 745

265(T)/2024 AUSTRALIA - WESTERN AUSTRALIA - Thevenard Island - Obstruction

Chevron Australia

An obstruction, 15m below the surface, exists in position 21° 24'.17 S 115° 02'.81 E.

Chart temporarily affected - Aus 64 - Aus 328 - Aus 743

297(T)/2024 AUSTRALIA - WESTERN AUSTRALIA - Cape Naturaliste - Scientific instrument northwestwards

Former Notice - 821(T)/2023 is cancelled

JASCO Applied Sciences (Australia)

A subsurface scientific instrument, 5m above the seabed, exists in position 33° 20'.07 S 114° 46'.94 E.

Chart temporarily affected - Aus 335

493(T)/2024 AUSTRALIA - WESTERN AUSTRALIA - Dampier Archipelago - Mooring buoy unlit northwards

Vermilion Oil and Gas Australia

Lit mooring buoy, *Mo(U)Y.15s* (20° 06'.9 S 116° 26'.0 E), is unlit.

Chart temporarily affected - Aus 327 - Aus 742

620(T)/2024 AUSTRALIA - WESTERN AUSTRALIA - Princess Royal Harbour - Marine farm; light buoys

Former Notice - 111(T)/2023 is cancelled

Department of Transport WA Notice 6130/2024

A marine farm marked by special light buoys, *Fl.Y.4s*, exists in an area bounded by the following positions:

35° 04'.22 S 117° 54'.51 E
35° 04'.22 S 117° 54'.61 E
35° 04'.21 S 117° 54'.61 E
35° 04'.21 S 117° 55'.00 E
35° 04'.09 S 117° 55'.00 E
35° 04'.09 S 117° 55'.20 E
35° 04'.36 S 117° 55'.20 E
35° 04'.36 S 117° 55'.14 E
35° 04'.48 S 117° 55'.14 E
35° 04'.48 S 117° 54'.51 E.

Chart temporarily affected - Aus 118

621(T)/2024 AUSTRALIA - WESTERN AUSTRALIA - Wilson Head - Scientific instruments

Former Notice - 631(T)/2023 is cancelled

Department of Transport WA Notice 5793/2024

Two special light buoys, *Fl.Y.2-5s*, exist in the vicinity of position 35° 02'.93 S 117° 21'.82 E.

Chart temporarily affected - Aus 336

918(T)/2024 AUSTRALIA - WESTERN AUSTRALIA - North West Cape - Light unlit; light established

Former Notice - 655(T)/2024 is cancelled

Australian Maritime Safety Authority Auscoast Warning 216/2024, Preliminary ATH 22/2024

The light, *Fl.10s 129m 21M* (21° 48'.37 S 114° 09'.61 E), is unlit.

A temporary light, *Fl.10s 95m 19M (Obscd 172-5° - 202-5° (030°))*, exists in position 21° 49'.22 S 114° 06'.06 E.

Chart temporarily affected - Aus 328 - Aus 329 - Aus 744 - Aus 745 - Aus 4060 (INT 60) - Aus 4070 (INT 70) - Aus 4071 (INT 71) - Aus 4708 (INT 708) - Aus 4723 (INT 723)

988(T)/2024 AUSTRALIA - WESTERN AUSTRALIA - Fremantle - Deepwater Channel - Scientific instrument
Former Notice - 1023(T)/2023 is cancelled
Department of Transport WA

A special light buoy, *Fl(5)Y.20s*, exists in position 31° 58'.78 S 115° 41'.38 E.

Chart temporarily affected - Aus 112

990(T)/2024 AUSTRALIA - WESTERN AUSTRALIA - Houtman Abrolhos - Zeewijk Channel - Fish aggregating device
Department of Primary Industries and Regional Development WA

A special light buoy, *Fl.Y.5s FAD (Oct-Apr)*, exists in position 28° 52'.74 S 113° 42'.37 E.

Chart temporarily affected - Aus 332

999(P)/2024 AUSTRALIA - WESTERN AUSTRALIA - Port Walcott - Shoaling
Former Notice - 789(P)/2024 is cancelled
Discovery Marine

Latest survey indicates shoaler depths than those charted may exist in an area bounded by the following positions:

20° 29'.89 S 117° 25'.65E

20° 29'.89 S 117° 27'.02E

20° 27'.96 S 117° 27'.02E

20° 27'.96 S 117° 25'.65E.

Mariners are advised to navigate with caution in the area.

Charts will be updated in due course.

Chart which will be affected - Aus 55 - Aus 326

55(T)/2025 AUSTRALIA - WESTERN AUSTRALIA - Rottnest Island - Phillip Rock - Entry prohibited
Department of Transport WA Notice 6302/2025

Entry is prohibited within a 200m radius of position 31° 59'.83 S 115° 33'.78 E.

Only government vessels and those associated with a coordinated response on site are permitted to enter the area.

Mariners area advised to navigate with caution in the area.

Chart temporarily affected - Aus 112

105(T)/2025 AUSTRALIA - WESTERN AUSTRALIA - Hilarys Boat Harbour - Scientific instrument westwards
University of Western Australia

A special light buoy, *Fl.Y.2.5s*, exists in position 31° 50'.72 S 115° 38'.78 E.

Chart temporarily affected - Aus 754

179(P)/2025 AUSTRALIA - WESTERN AUSTRALIA - Dampier - West Lewis Island - Obstruction
Go Offshore

An obstruction on the sea floor has been reported in the vicinity of position 20° 36'.27 S 116° 35'.13 E.

Mariners should navigate with caution in the area.

Chart which will be affected - Aus 57

181(T)/2025 AUSTRALIA - WESTERN AUSTRALIA - Exmouth - Scientific instruments
Former Notice - 46(T)/2025 is cancelled

Department of Transport WA Notice 6268/2024

Scientific instruments, 5m below the surface, exist in the following positions:

21° 55'.56 S 114° 08'.88 E
21° 57'.66 S 114° 08'.82 E
21° 58'.02 S 114° 08'.76 E
21° 59'.04 S 114° 08'.46 E.

Mariners are advised to navigate with caution in the area.

Chart temporarily affected - Aus 744 - Aus 745

218(T)/2025 AUSTRALIA - WESTERN AUSTRALIA - Barracouta Shoal - Well plug and abandonment works eastwards

Jadestone Energy

On or about 8 March 2025, a drill rig will be conducting well plug and abandonment works in the vicinity of position 12° 30'.08 S 124° 25'.12 E.

Mariners are advised to navigate with caution in the area.

Chart temporarily affected - Aus 314 - Aus 319 - Aus 4722 (INT 722)

222(T)/2025 AUSTRALIA - WESTERN AUSTRALIA - Eugene McDermott Shoal to Exmouth Plateau - Cable laying operations

Gulf Agency Company (Australia)

Vessel *Ile de Brehat* is conducting cable laying operations between positions 13° 26'.46 S 124° 34'.93 E and 12° 58'.13 S 124° 26'.68 E; and in the vicinity of position 19° 53'.09 S 113° 14'.03 E.

Mariners are advised to navigate with caution in the area.

Chart temporarily affected - Aus 319 - Aus 4722 (INT 722) - Aus 4723 (INT 723)

229(T)/2025 AUSTRALIA - WESTERN AUSTRALIA - Rottnest Island - Scientific instruments northwestwards

JASCO Applied Sciences (Australia)

Subsurface scientific instruments, 2m above seabed, exist in positions 31° 52'.91 S 114° 56'.07 E and 31° 52'.85 S 115° 01'.14 E.

Mariners are advised to keep a 100m radius clearance around the instruments and to navigate with caution in the area.

Chart temporarily affected - Aus 754

263(T)/2025 AUSTRALIA - WESTERN AUSTRALIA - Esperance Bay to Eastern Group - Survey operations; scientific instruments

Former Notice - 221(T)/2025 is cancelled

Revelare Hydrospatial

During hydrographic survey operations, subsurface tide gauges with release buoys will be deployed in an area bounded by the following positions:

34° 13'.37 S 123° 59'.24 E
34° 13'.12 S 124° 19'.17 E
33° 34'.52 S 124° 19'.37 E
33° 34'.82 S 124° 07'.20 E
33° 44'.03 S 123° 58'.84 E
33° 59'.75 S 123° 35'.86 E
34° 07'.46 S 123° 38'.96 E.

An additional subsurface tide gauge with release buoy will be deployed in position 33° 57'.00 S 121° 49'.60 E.

A special light buoy, *Fl.Y.1-5s*, will be deployed for 72 hours at various locations during the survey.

Mariners are advised to navigate with caution in the area.

Chart temporarily affected - Aus 119 - Aus 762 - Aus 763 - Aus 4709 (INT 709)

264(T)/2025 AUSTRALIA - WESTERN AUSTRALIA - Hilarys Boat Harbour - Scientific instrument westwards
University of Western Australia

A special light buoy, *Fl.Y.2.5s*, exists in position 31° 50'.72 S 115° 38'.78 E.

Chart temporarily affected - Aus 754 - Aus 4060 (INT 60) - Aus 4070 (INT 70) - Aus 4708 (INT 708) - Aus 4709 (INT 709)

304(P)/2025 AUSTRALIA - WESTERN AUSTRALIA - Carnarvon - Gascoyne River - Shoaling
Department of Transport WA

Latest survey shows channel realignment between the entrance (24° 54'.47 S 113° 38'.68 E) and Pelican Point (24° 53'.88 S 113° 38'.57 E).

Electronic Navigation Charts (ENCs) have been updated. Paper Charts will be updated in due course.

Chart which will be affected - Aus 73

336(T)/2025 AUSTRALIA - WESTERN AUSTRALIA - Bunbury - Harbour works

Former Notice - 219(P)/2025 is cancelled
Department of Transport WA Notice WA859/15/2025

Works associated with the construction of a new breakwater at the entrance to Casuarina Harbour are in progress between positions 33° 18'.67 S 115° 38'.63 E and 33° 18'.48 S 115° 38'.51 E.

Mariners should navigate between the lateral light buoys in the vicinity of position 33° 18'.67 S 115° 38'.61 E to follow the change in channel position.

Mariners are advised to navigate with caution in the area.

Chart temporarily affected - Aus 115

341(T)/2025 AUSTRALIA - WESTERN AUSTRALIA - Thevenard Island - Subsea operations
Chevron Australia

Diving and mooring removal activities are in progress in the following positions:

21° 38'.17 S 114° 55'.43 E
21° 26'.42 S 115° 03'.24 E
21° 24'.00 S 115° 02'.55 E
21° 24'.33 S 115° 02'.79 E
21° 24'.35 S 115° 02'.82 E
21° 24'.36 S 115° 02'.94 E
21° 24'.15 S 115° 03'.07 E
21° 24'.06 S 115° 03'.00 E
21° 24'.05 S 115° 02'.97 E
21° 24'.27 S 115° 02'.97 E
21° 24'.00 S 115° 02'.86 E
21° 24'.13 S 115° 02'.62 E.

Vessels will display appropriate lights and shapes and will monitor VHF Ch 14 and Ch 16.

Mariners are advised to navigate with caution in the area.

Chart temporarily affected - Aus 64 - Aus 328 - Aus 743 - Aus 744

415(T)/2025 AUSTRALIA - WESTERN AUSTRALIA - Cape Range - Tantabiddi - Light
Department of Transport WA Notice 6420/2025

The front lead (21° 53'.99 S 113° 59'.19 E) has collapsed and should not be relied upon to indicate recommended track.

Chart temporarily affected - Aus 328 - Aus 329 - Aus 745

459(P)/2025 AUSTRALIA - WESTERN AUSTRALIA - Varanus Island - Shoaling
Precision Hydrographic Services

Latest survey indicates shoaler depths than those charted may exist in an area bounded by the following positions:

20° 37'.35 S 115° 32'.83 E
20° 37'.36 S 115° 33'.71 E
20° 38'.00 S 115° 34'.60 E
20° 39'.70 S 115° 36'.69 E
20° 39'.87 S 115° 36'.16 E.

Mariners are advised to navigate with caution in the area.

Charts will be updated in due course.

Chart which will be affected - Aus 65 - Aus 742

498(T)/2025 AUSTRALIA - WESTERN AUSTRALIA - North West Cape - Subsea operations northwards
Fugro

On or about 25 June 2025, subsea operations will be conducted in the vicinity of positions 21° 17'.70 S 114° 08'.00 E and 21° 26'.70 S 114° 01'.70 E.

Mariners are advised to navigate with caution in the area. 2.5NM clearance requested.

Chart temporarily affected - Aus 328 - Aus 329 - Aus 744

560(P)/2025 AUSTRALIA - WESTERN AUSTRALIA - Hopetoun - Mason Bay - Shoaling
Department of Transport WA

Latest survey indicates shoaler depths than those charted may exist in the vicinity of the following positions:

33° 57'.51 S 120° 29'.84 E
33° 57'.77 S 120° 06'.91 E

Mariners are advised to navigate with caution in the area.

Charts will be updated in due course.

Chart which will be affected - Aus 116 - Aus 337

673(T)/2025 AUSTRALIA - WESTERN AUSTRALIA - Dampier - Harbour works
Pilbara Ports Authority Notice D15/2025

Harbour works are in progress in an area bounded by the following positions:

20° 37'.06 S 116° 44'.87 E
20° 36'.90 S 116° 44'.87 E
20° 36'.90 S 116° 44'.93 E
20° 37'.06 S 116° 44'.93 E.

Entry into the area is prohibited unless authorised by the primary contractor, Clough. Any arrivals or departures from the area must be reported to Dampier VTS along with confirmation that permission has been obtained.

Mariners are advised to navigate with caution in the area.

Chart temporarily affected - Aus 57 - Aus 59

676(T)/2025 AUSTRALIA - WESTERN AUSTRALIA - Montebello Islands - Scientific instrument northwestwards
Fugro

A special light buoy, *Fl(5)Y.20s*, exists in position 19° 51'.33 S 114° 35'.48 E.

Chart temporarily affected - Aus 328

678(P)/2025 AUSTRALIA - WESTERN AUSTRALIA - Roebuck Bay - Shoaling westwards
Australian Hydrographic Office

Latest survey indicates shoaler depths than those charted may exist in an area bounded by the following positions:

18° 11'.04 S 121° 55'.21 E
18° 10'.67 S 121° 52'.15 E
18° 01'.61 S 121° 55'.81 E
18° 02'.48 S 121° 57'.98 E.

Mariners are advised to navigate with caution in the area.

Products will be updated in due course.

Chart which will be affected - Aus 50 - Aus 324

679(T)/2025 AUSTRALIA - WESTERN AUSTRALIA - Thevenard Island - Light buoy altered

Department of Transport and Major Infrastructure WA

The east cardinal light buoy, *Q(3)10s* (21° 26'.40 S 115° 03'.46 E), has been temporarily altered to *FI(3)15s 5M*.

Chart temporarily affected - Aus 64 - Aus 743

715(T)/2025 AUSTRALIA - WESTERN AUSTRALIA - Geraldton - Scientific instruments

Mid West Ports Notice 11/2025

Subsurface scientific instruments exist on the seabed in positions 28° 45'.67 S 114° 36'.21 E and 28° 46'.23 S 114° 36'.30 E.

Mariners are advised to navigate with caution in the area.

Chart temporarily affected - Aus 81

759(T)/2025 AUSTRALIA - WESTERN AUSTRALIA - Lancelin to Garden Island - Military exercises

Department of Defence

Surface and subsurface military exercises will be conducted from 25 August to 19 September 2025 in areas bounded by the following positions:

31° 03'.32 S 114° 58'.33 E
30° 56'.92 S 115° 17'.60 E
30° 49'.67 S 115° 13'.28 E
30° 55'.20 S 114° 54'.75 E;
and
32° 16'.72 S 115° 16'.82 E
32° 15'.53 S 115° 47'.17 E
31° 46'.15 S 115° 43'.83 E
31° 47'.10 S 115° 16'.12 E.

Non participants are required to maintain a minimum 500YDS safety distance from units operating AUVs and 1M from units undertaking diving activities to ensure compliance.

Mariners area advised to navigate with caution in the area.

Chart temporarily affected - Aus 112 - Aus 117 - Aus 753 - Aus 754 - Aus 755

789(T)/2025 AUSTRALIA - WESTERN AUSTRALIA - Bandy Creek Boat Harbour - Light beacon destroyed

Former Notice - 670(T)/2025 is cancelled

Department of Transport WA

The light beacon, *Fl.G.5s No1* (33° 50'.01 S 121° 55'.95 E), has been destroyed; a starboard lateral light buoy, *Fl.G.5s*, exists in situ.

Chart temporarily affected - Aus 119

790(P)/2025 AUSTRALIA - WESTERN AUSTRALIA - Bandy Creek Boat Harbour - Shoaling

Department of Transport WA

Latest survey indicates shoaler depths than those charted may exist in the vicinity of position 33° 55'.09 S 121° 55'.95 E.

Mariners are advised to navigate with caution in the area.

Charts will be updated in due course.

Chart which will be affected - Aus 119

792(T)/2025 AUSTRALIA - WESTERN AUSTRALIA - Dampier Archipelago - Subsea operations northwards
Santos

Subsea operations associated with the cessation of production activities are in progress between positions 20° 01'.45 S 116° 18'.58 E and 20° 24'.64 S 116° 20'.14 E.

Mariners are advised to navigate with caution in the area.

Chart temporarily affected - Aus 57 - Aus 327 - Aus 742

795(T)/2025 AUSTRALIA - WESTERN AUSTRALIA - Geraldton - Fishing Boat Harbour - Dredging operations; survey operations
Mid West Ports Notice 13/2025

The dredge *Kingston* and support vessels are conducting dredging and survey operations in the entrance to Fishing Boat Harbour (28° 46'.27 S 114° 35'.58 E).

A floating and submerged pipeline exists from the dredge and is marked by special light buoys, *Fl. Y.3s*.

Vessels will display appropriate lights and shapes and will monitor VHF Ch 12 and Ch 16.

Mariners are advised to navigate with caution in the area.

Chart temporarily affected - Aus 81

836(T)/2025 AUSTRALIA - WESTERN AUSTRALIA - Double Island - Light unlit
Chevron Australia Notice 7/2025

The light, *Fl.6s 17m 5M* (20° 44'.14 S 115° 29'.72 E), is unlit.

Chart temporarily affected - Aus 65 - Aus 327 - Aus 328 - Aus 742

920(T)/2025 AUSTRALIA - WESTERN AUSTRALIA - Exmouth Plateau - Survey operations; obstructions
Woodside Energy Ltd

A large number of concrete pads have been placed on the seabed in the vicinity of 19°48'.97S, 113°12'.00E, to facilitate gravity meter survey operations. They pose no threat to surface navigation but mariners should be aware when conducting any subsurface activities.

Mariners are advised to navigate with caution in the area.

Chart temporarily affected - Aus 4723 (INT 723)

922(T)/2025 AUSTRALIA - WESTERN AUSTRALIA - Perth to Cape Leeuwin - Survey operations westwards
EGS Survey Pty Ltd

On or about 20 October 2025, vessel *Offshore Supplier* will be conducting survey operations in an area bounded by the following positions:

31° 48'.40 S 110° 45'.82 E

31° 48'.40 S 115° 49'.53 E

34° 17'.98 S 110° 45'.82 E

34° 17'.98 S 115° 49'.53 E.

The vessel will display appropriate lights and shapes and will monitor VHF Ch 16.

Mariners are advised to navigate with caution in the area.

Chart temporarily affected - Aus 112 - Aus 115 - Aus 116 - Aus 117 - Aus 335 - Aus 336 - Aus 754 - Aus 755 - Aus 4708 (INT 708) - Aus 4709 (INT 709) - Aus 4710 (INT 710)

949(T)/2025 AUSTRALIA - WESTERN AUSTRALIA - Bonaparte Archipelago - Cassini Island - Wreck
Cape Byron

A dangerous wreck exists in position 13° 56'.22 S 125° 38'.39 E.

Mariners are advised to navigate with caution in the area.

Chart temporarily affected - Aus 728

951(T)/2025 AUSTRALIA - WESTERN AUSTRALIA - Dampier Archipelago to Muiron Islands - Subsea operations northwestwards

Former Notice - 765(T)/2025 is cancelled
Technip FMC

Vessel *Deep Orient* will be conducting subsea structure recovery operations in the Griffin Field (21° 13'.4 S 114° 38'.7 E, the Stybarrow Field (21° 24'.3 S 113° 51'.7 E) and the Echo Yodel Field (19° 44'.3 S 115° 44'.9 E).

Mariners are advised to navigate with caution in the area.

Chart temporarily affected - Aus 327 - Aus 328 - Aus 329 - Aus 744

953(T)/2025 AUSTRALIA - WESTERN AUSTRALIA - Goeree Shoal - Mooring buoy

McDermott Australia

A lit mooring buoy, *Fl*, exists in position 12° 57'.00 S 124° 25'.68 E.

Chart temporarily affected - Aus 319

998(T)/2025 AUSTRALIA - WESTERN AUSTRALIA - Barrow Island - Town Point - Light beacons unreliable; light beacon unlit

Chevron Australia Notice 10/2025, 11/2025

The starboard lateral light beacon, *Q.G* (20° 50'.23 S 115° 32'.18 E), and the port lateral light beacon, *Fl.R.3s* (20° 50'.60 S 115° 31'.92 E), are unreliable.

The special light beacon, *Fl.Y.3s* (20° 48'.72 S 115° 29'.72 E), is unlit.

Chart temporarily affected - Aus 65 - Aus 742 - Aus 743

1038(P)/2025 AUSTRALIA - WESTERN AUSTRALIA - Archipelago of the Recherche - Shoaling

Australian Hydrographic Office

Latest surveys indicate shoaler depths than those charted may exist throughout this chart.

Mariners are advised to navigate with caution in the area.

ENC products have been updated, paper charts will be updated in due course.

Chart which will be affected - Aus 763

1040(T)/2025 AUSTRALIA - WESTERN AUSTRALIA - Broome - Obstruction westwards

Reach Subsea

An obstruction with depth 12m exists in position 17° 53'.28 S 122° 04'.11 E.

Chart temporarily affected - Aus 50

1041(T)/2025 AUSTRALIA - WESTERN AUSTRALIA - Dampier - Hampton Harbour - Wreck

Former Notice - 1000(T)/2025 is cancelled
Pilbara Ports Authority Notice D25(T)/2025

A stranded wreck marked by an isolated danger light buoy, *Fl(2)*, exists in position 20° 39'.95 S 116° 41'.58 E.

Mariners are advised to navigate with caution in the area.

Chart temporarily affected - Aus 57 - Aus 60

1042(T)/2025 AUSTRALIA - WESTERN AUSTRALIA - Exmouth Plateau - Survey operations

Woodside Energy Ltd

On or about 30 November 2025, an unmanned survey vessel (USV) will be conducting gravimetry survey operations in an area bounded by the following positions:

20° 00'.0 S 113° 04'.0 E
20° 00'.0 S 113° 19'.2 E
19° 44'.8 S 113° 19'.1 E
19° 44'.8 S 113° 24'.1 E
19° 39'.8 S 113° 24'.1 E
19° 39'.8 S 113° 04'.0 E.

Mariners are advised to navigate with caution in the area.

Chart temporarily affected - Aus 4723 (INT 723)

1043(T)/2025 AUSTRALIA - WESTERN AUSTRALIA - Kingfisher Islands - Survey operations

Former Notice - 921(T)/2025 is cancelled

Reach Subsea

Vessel *Warrego* and unmanned survey vessel (USV) *Orca 1* are conducting survey operations in an area bounded by the following positions:

15° 55'.1 S 124° 00'.6 E
15° 57'.2 S 124° 19'.9 E
16° 03'.6 S 124° 26'.1 E
16° 09'.5 S 124° 20'.4 E
16° 14'.1 S 124° 03'.4 E
16° 15'.2 S 123° 53'.4 E
16° 22'.5 S 123° 59'.3 E
16° 16'.7 S 123° 49'.7 E
16° 11'.4 S 123° 50'.2 E
16° 09'.8 S 123° 47'.9 E.

Tide gauges marked by special light buoys, *Fl. Y.5s*, exist in the following positions:

16° 21.4' S	123° 57.4' E
16° 19.1' S	123° 55.0' E
16° 15.9' S	123° 50.9' E
16° 10.9' S	123° 52.3' E
16° 09.4' S	123° 47.8' E
16° 02.9' S	123° 48.0' E
16° 04.8' S	123° 56.9' E
16° 09.2' S	124° 02.9' E
16° 01.5' S	124° 01.8' E
15° 55.7' S	123° 59.2' E
16° 02.4' S	124° 09.4' E
16° 02.1' S	124° 17.5' E
15° 57.2' S	124° 19.9' E
16° 03.6' S	124° 26.1' E
16° 07.3' S	124° 20.4' E
16° 09.5' S	124° 20.4' E
16° 11.3' S	124° 12.9' E
16° 13.1' S	124° 07.5' E
16° 12.3' S	123° 59.6' E
16° 05.9' S	123° 54.1' E
16° 12.3' S	124° 04.0' E
16° 02.3' S	124° 04.0' E.

Mariners are advised to navigate with caution in the area.

Chart temporarily affected - Aus 40 - Aus 732 - Aus 733

1044(T)/2025 AUSTRALIA - WESTERN AUSTRALIA - Muiron Islands - Subsea operations northwestwards

Former Notice - 995(T)/2024 is cancelled

Woodside Energy Ltd

Vessel *MMA Pinnacle* is conducting subsea structure recovery operations in the Stybarrow Field (21° 27'.0 S 113° 49'.5 E).

Mariners are advised to navigate with caution in the area.

Chart temporarily affected - Aus 328 - Aus 329

1047(T)/2025 AUSTRALIA - WESTERN AUSTRALIA - Rottnest Island - Light buoy off station; AIS inoperative westwards

Former Notice - 564(T)/2025 is cancelled
Curtin University

The special light buoy, *Fl. Y. 5s* (31° 58'.81 S 115° 13'.70 E), is off station and in position 31° 57'.14 S 115° 14'.66 E. The AIS is inoperative.

Chart temporarily affected - Aus 754

1048(P)/2025 AUSTRALIA - WESTERN AUSTRALIA - Success Bank - Shoaling

Department of Transport WA

Latest survey indicates shoaler depths than those charted may exist in an area bounded by the following positions:

32° 06'.75 S 115° 38'.75 E

32° 06'.75 S 115° 41'.44 E

32° 03'.77 S 115° 41'.44 E

32° 03'.77 S 115° 38'.75 E.

Mariners are advised to navigate with caution in the area.

Charts will be updated in due course.

Chart which will be affected - Aus 112 - Aus 117

1079(T)/2025 AUSTRALIA - WESTERN AUSTRALIA - Eugene McDermott Shoal - Steel truss

Former Notice - 1001(T)/2025 is cancelled
McDermott Australia

A yellow steel truss structure, with a height of 19m, has been installed in position 12° 57'.86 S 124° 26'.55 E for a future drill rig. The structure is marked by a light, *Mo(U)10s*.

Mariners are advised to navigate with caution in the area.

Chart temporarily affected - Aus 319

1080(T)/2025 AUSTRALIA - WESTERN AUSTRALIA - Exmouth Plateau - Subsea operations

Woodside Energy Ltd

Vessels are conducting subsea operations in the vicinity of position 19° 49'.0 S 113° 11'.0 E.

A 500m exclusion zone exists around vessels.

Mariners are advised to navigate with caution in the area.

Chart temporarily affected - Aus 4723 (INT 723)

1082(T)/2025 AUSTRALIA - WESTERN AUSTRALIA - Geraldton - Scientific instruments

Mid West Ports Notice 17/2025

Scientific instruments marked by special light buoys, *Fl. Y. 3s*, exist on the seabed in positions 28° 46'.36 S 114° 36'.32 E and 28° 46'.21 S 114° 36'.48 E.

Mariners are requested to avoid anchoring, fishing or trawling in the vicinity.

Chart temporarily affected - Aus 81

29(T)/2026 AUSTRALIA - WESTERN AUSTRALIA - Lowendal Islands - Varanus Island - Scientific instrument northeastwards

Fugro

A special light buoy, *Fl(5)Y. 20s*, exists in position 20° 36'.38 S 115° 36'.84 E.

Chart temporarily affected - Aus 742

63(T)/2026 AUSTRALIA - WESTERN AUSTRALIA - NEW SOUTH WALES - Perth to Sydney - Cable laying operations
Gulf Agency Company (Australia)

Cable laying operations will be conducted between Perth and Sydney. Cable lay and post lay inspection activities will occur along the route shown in the diagram and mariners are advised to keep clear of vessels, *Ile d'yue* and *Peter Faber*, during activities. Further advice on specific areas of activity will be issued through the AUSCOAST warning system.

Note: For e-notice users, please see full edition for map.

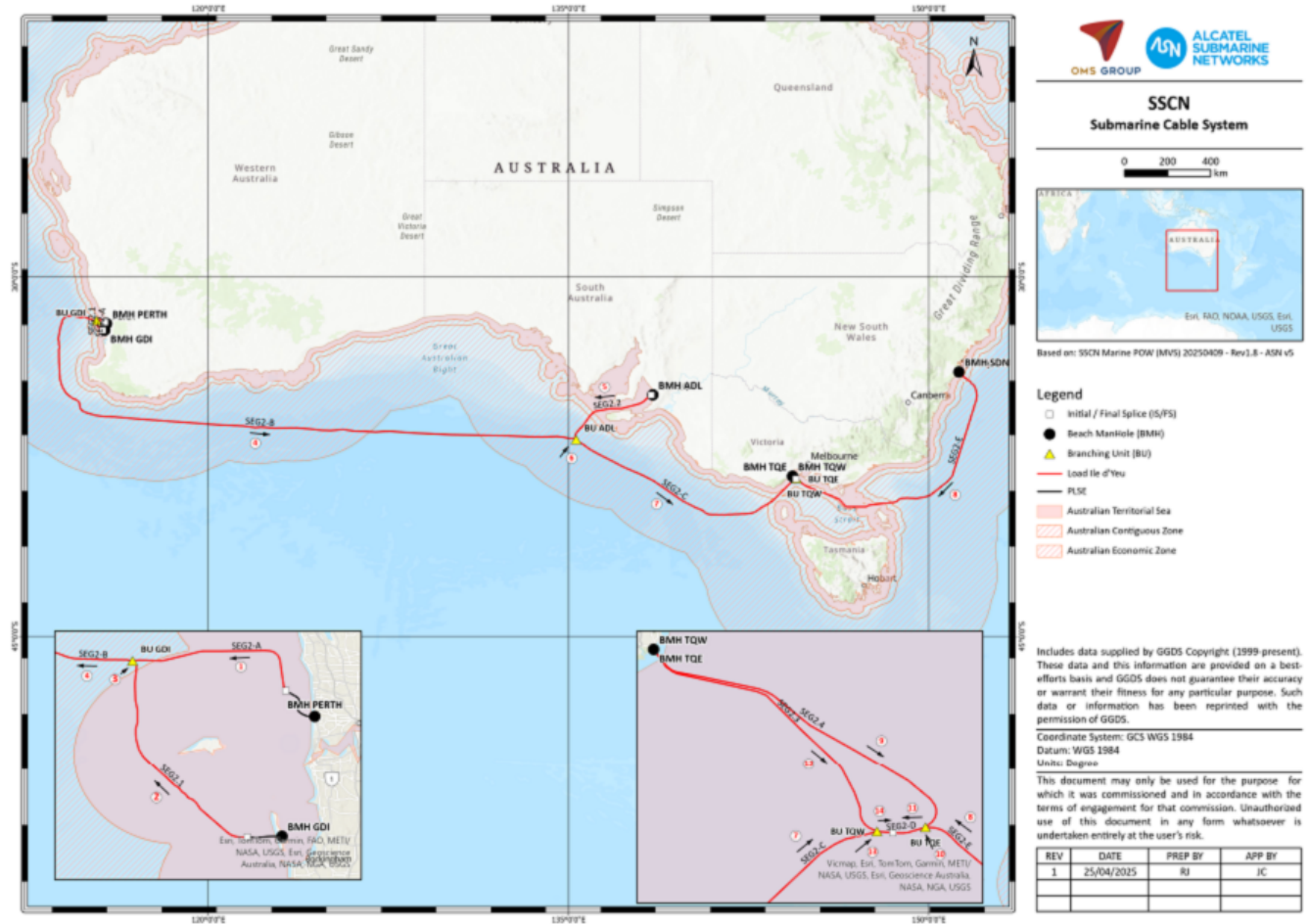


Chart temporarily affected - Aus 130 - Aus 143 - Aus 198 - Aus 335 - Aus 336 - Aus 343 - Aus 346 - Aus 348 - Aus 349 - Aus 357 - Aus 485 - Aus 487 - Aus 489 - Aus 754 - Aus 780 - Aus 781 - Aus 801 - Aus 802 - Aus 808 - Aus 4601 (INT 601) - Aus 4602 (INT 602) - Aus 4708 (INT 708) - Aus 4709 (INT 709) - Aus 4710 (INT 710)

112(T)/2026 AUSTRALIA - WESTERN AUSTRALIA - Barrow Island - Subsea operations; survey operations northwestwards

DOF

On or about 17 February 2026, vessel *Skandi Inventor* will be conducting subsea operations and survey operations in positions 19° 48'.59 S 114° 36'.34 E and 19° 52'.73 S 114° 36'.48 E. A 5M radius cautionary zone and a 0.5M radius exclusion zone exists around each position.

Mariners are advised to navigate with caution in the area.

Chart temporarily affected - Aus 328

154(P)/2026 AUSTRALIA - WESTERN AUSTRALIA - Archipelago of the Recherche - Shoaling
Australian Hydrographic Office

Latest surveys indicate shoaler depths than those charted exist in an area bounded by the following positions:

- 34° 04'.71 S 121° 57'.68 E
- 33° 58'.79 S 122° 06'.99 E
- 33° 53'.75 S 122° 04'.74 E
- 33° 50'.34 S 121° 59'.23 E
- 33° 53'.33 S 121° 54'.44 E.

Mariners are advised to navigate with caution in the area.

ENC products have been updated, paper charts will be updated in due course.

Chart which will be affected - Aus 119 - Aus 762

155(T)/2026 AUSTRALIA - WESTERN AUSTRALIA - Barrow Island - Town Point - Light unlit

Department of Transport WA Notice 6745/2026

The leading light, *Iso.WRG.4s & F.Bu* (20° 47'.66 S 115° 28'.64 E), is unlit.

Chart temporarily affected - Aus 65

157(T)/2026 AUSTRALIA - WESTERN AUSTRALIA - Dampier Archipelago - Well plug and abandonment works; well intervention works northwestwards

Woodside Energy Ltd

On or about 2 March 2026, drill rig *Transocean Endurance* and support vessels will begin well plug and abandonment works in the vicinity of the following positions:

19° 28'.98 S 116° 36'.62 E

19° 30'.63 S 116° 36'.32 E

19° 31'.30 S 116° 35'.22 E

19° 31'.20 S 116° 06'.65 E

19° 31'.45 S 116° 05'.90 E.

Well intervention works will be conducted in the vicinity of position 19° 45'.73 S 115° 53'.40 E.

Mariners are advised to navigate with caution in the area. 500m clearance requested.

Chart temporarily affected - Aus 327

160(T)/2026 AUSTRALIA - WESTERN AUSTRALIA - Exmouth Plateau - Subsea operations

Subsea 7

Vessel *Normand Scorpion* is conducting subsea operations in an area bounded by the following positions:

19° 57'.84 S 113° 04'.05 E

19° 57'.84 S 113° 16'.79 E

19° 44'.31 S 113° 16'.79 E

19° 44'.31 S 113° 04'.05 E.

Mariners are advised to navigate with caution in the area. 500m clearance requested.

Chart temporarily affected - Aus 4723 (INT 723)

161(T)/2026 AUSTRALIA - WESTERN AUSTRALIA - Indian Ocean - Perth to Melbourne - Perth to Christmas Island - Cable laying operations

Subcom

Cable laying operations will be conducted between Perth and Melbourne and Perth and Christmas Island. Cable lay and post lay inspection activities will occur along the route shown in the diagram and mariners are advised to keep clear of vessel, CS *Resolute* during activities. Further advice on specific areas of activity will be issued through the AUSCOAST warning system.

Note: For e-notice users, please see full edition for map.

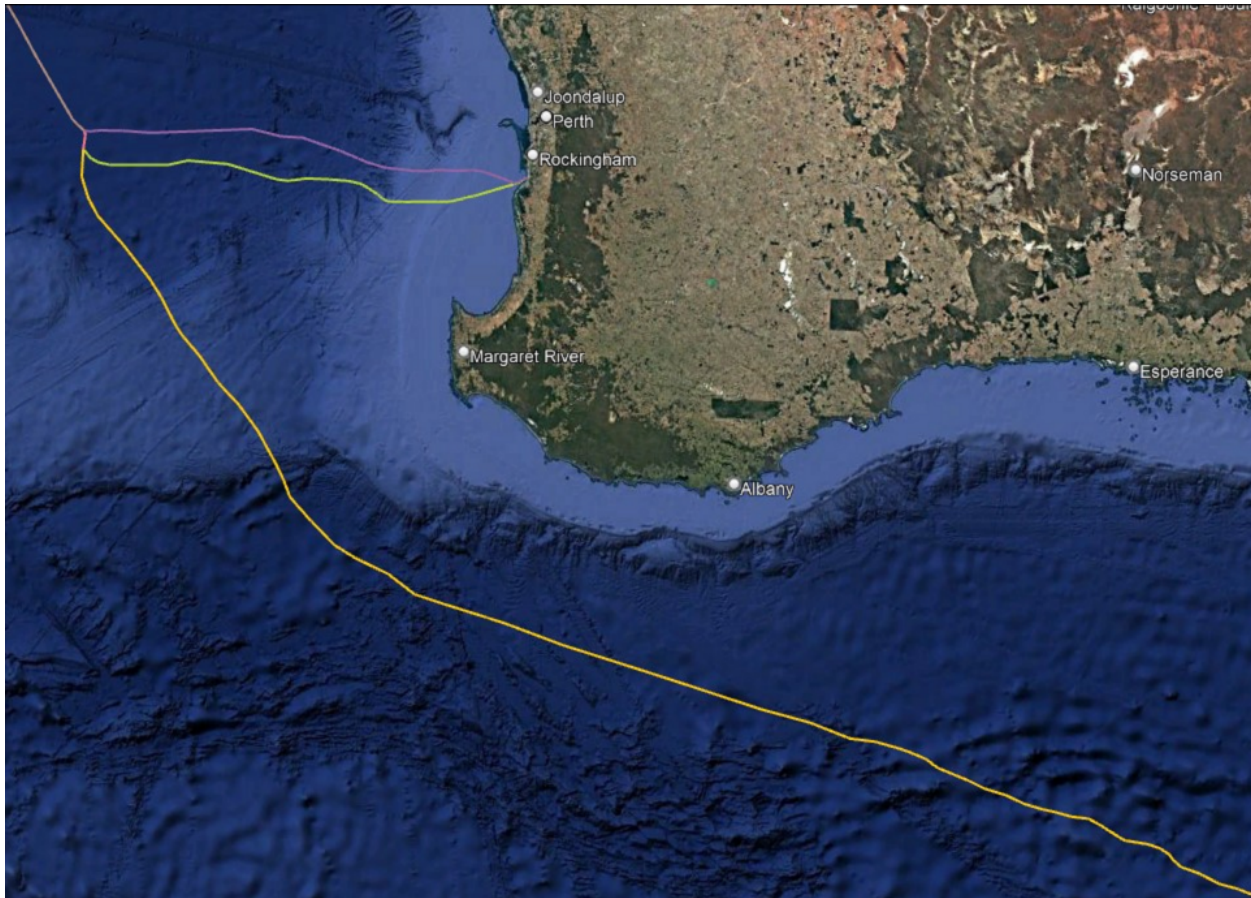


Chart temporarily affected - Aus 4708 (INT 708) - Aus 4709 (INT 709) - Aus 4710 (INT 710)

162(T)/2026 AUSTRALIA - WESTERN AUSTRALIA - Lowendal Islands - Varanus Island - Light beacon destroyed
Pilbara Ports Authority

The special light beacon, *Fl. Y.5s* (20° 39'.35 S 115° 34'.97 E), has been destroyed.

Mariners are advised to navigate with caution in the area.

Chart temporarily affected - Aus 65

163(T)/2026 AUSTRALIA - WESTERN AUSTRALIA - Montebello Islands - Subsea operations northwestwards
Monson Offshore

On or about 1 March 2026, vessel *Saipem Constellation* and support vessels *Go Australis* and *Bigroll Bering* will begin subsea operations in positions 19° 48'.63 S 114° 36'.72 E and 19° 52'.73 S 114° 36'.48 E.

Mariners are advised to navigate with caution in the area. 500m clearance requested.

Chart temporarily affected - Aus 328

167(T)/2026 AUSTRALIA - WESTERN AUSTRALIA - Shoalwater Bay - Mooring buoys westwards
Department of Transport WA Notice 6743/2026

Lit mooring buoys, *Fl. Y.2.5s*, exist in the following positions:

32° 17'.32 S 115° 39'.38 E

32° 17'.44 S 115° 39'.23 E

32° 17'.44 S 115° 39'.37 E

32° 19'.55 S 115° 39'.34 E

32° 15'.46 S 115° 39'.05 E
32° 16'.25 S 115° 40'.28 E
32° 17'.81 S 115° 39'.82 E.

Mariners are advised to navigate with caution in the area.

Chart temporarily affected - Aus 116 - Aus 117 - Aus 754 - Aus 755

209(T)/2026 AUSTRALIA - WESTERN AUSTRALIA - Cockburn Sound - Jervoise Bay - Northern Harbour - Wind turbine
INF66

A floating vertical wind turbine, with a height of 26m, is moored in position 32° 08'.80 S 115° 45'.87 E.

A 72m radius restricted area, marked by light buoys, exists around the wind turbine for all vessels except those that are authorised to enter.

Mariners are advised to navigate with caution in the area.

Chart temporarily affected - Aus 117

210(T)/2026 AUSTRALIA - WESTERN AUSTRALIA - Coronation Beach to Drummond Cove - Scientific instruments
Mid West Ports Notice 4/2026

Subsurface scientific instruments exist on the seabed in the following positions:

28° 33'.63 S 114° 32'.80 E
28° 33'.80 S 114° 32'.94 E
28° 38'.10 S 114° 34'.84 E.

Mariners are advised to navigate with caution in the area.

Chart temporarily affected - Aus 332

212(T)/2026 AUSTRALIA - WESTERN AUSTRALIA - Enderby Island - Mooring buoys northwards
Saipem

Two red lit mooring buoys, *Fl.Y*, exist in positions 20° 30'.82 S 116° 26'.60 E and 20° 30'.94 S 116° 26'.72 E.

Chart temporarily affected - Aus 57

215(T)/2026 AUSTRALIA - WESTERN AUSTRALIA - Lowendal Islands - Varanus Island - Subsea operations
Santos

On or about 10 March 2026, vessel *Jetwave Lightning* will begin inspection and maintenance operations in the vicinity of positions 20° 42'.77 S 114° 58'.47 E and 20° 37'.78 S 115° 36'.54 E.

Mariners are advised to navigate with caution in the area. 500m clearance requested.

Chart temporarily affected - Aus 65 - Aus 742

255(T)/2026 AUSTRALIA - WESTERN AUSTRALIA - Cape Naturaliste - Cable laying operations westwards
Gulf Agency Company (Australia)

Vessel *CS Resolute* is conducting cable laying operations between positions 33° 14'.89 S 113° 42'.24 E and 34° 19'.54 S 109° 35'.95 E.

Mariners are advised to navigate with caution in the area.

Chart temporarily affected - Aus 4708 (INT 708) - Aus 4709 (INT 709) - Aus 4710 (INT 710)

256(P)/2026 AUSTRALIA - WESTERN AUSTRALIA - Carnarvon - Shoaling
Department of Transport and Major Infrastructure WA

Latest survey indicates potential channel realignment and shoaler depths than those charted may exist in the vicinity of position 24° 54'.44 S 113° 38'.67 E.

Mariners are advised to navigate with caution in the area.

Charts will be updated in due course.

Chart which will be affected - Aus 73

257(T)/2026 AUSTRALIA - WESTERN AUSTRALIA - Dampier Archipelago - Survey operations northwards

Woodside Energy Ltd

On or about 27 March 2026, vessel *Offshore Surveyor* will begin geophysical survey operations in the vicinity of the following positions:

19° 48'.0 S 115° 48'.0 E

19° 30'.0 S 116° 06'.0 E

19° 30'.0 S 116° 30'.0 E.

Mariners are advised to navigate with caution in the area. 500m clearance requested.

Chart temporarily affected - Aus 327

296(T)/2026 AUSTRALIA - WESTERN AUSTRALIA - Glomar Shoal - FPSO

Woodside Energy Ltd

The lit FPSO *Okha Mo(U)15s* (19° 35'.36 S 116° 26'.78 E) is off station for maintenance; an unlit riser turret mooring remains in situ.

NOTE; FPSO is shown as *Wanaea* on Aus4723

Chart temporarily affected - Aus 327 - Aus 4603 (INT 603) - Aus 4708 (INT 708) - Aus 4722 (INT 722) - Aus 4723 (INT 723)

299(T)/2026 AUSTRALIA - WESTERN AUSTRALIA - Montebello Islands - Subsea operations northwestwards

DOF Australia

Vessel *Skandi Singapore* is conducting subsea operations within a 3M radius of position 20° 06'.47 S 115° 03'.39 E.

Mariners are advised to navigate with caution in the area.

Chart temporarily affected - Aus 328

301(T)/2026 AUSTRALIA - WESTERN AUSTRALIA - Onslow - Beadon Bay - Light buoy unlit

Department of Transport WA NTM 6754(T)-2026

The port lateral light buoy, *Fl.R.3s No4* (21° 37'.58 S 115° 07'.78 E), is unlit.

Mariners are advised to navigate with caution in the area.

Chart temporarily affected - Aus 64

302(T)/2026 AUSTRALIA - WESTERN AUSTRALIA - Scott Reef - Scientific instruments

JASCO Applied Sciences (Australia)

Subsurface scientific instruments exist as follows:

<i>Position</i>	<i>Remarks</i>
13° 59'.09 S 121° 46'.42 E	1.5m above seabed
13° 59'.60 S 121° 58'.93 E	1.5m above seabed
14° 02'.07 S 122° 00'.98 E	1.5m above seabed
14° 02'.31 S 121° 58'.33 E	20m below the surface
14° 31'.15 S 121° 37'.64 E	1.5m above seabed.

Mariners are advised to navigate with caution in the area.

Chart temporarily affected - Aus 322

337(T)/2026 AUSTRALIA - WESTERN AUSTRALIA - Dampier - Hampton Harbour - Depths
Revelare Hydrospatial

Latest survey indicates shoaler depths than those charted in the vicinity of the following positions:
20° 40'.25 S 116° 41'.68 E
20° 39'.72 S 116° 41'.98 E.

Mariners are advised to navigate with caution in the area.

Chart temporarily affected - Aus 60

338(T)/2026 AUSTRALIA - WESTERN AUSTRALIA - Dampier Archipelago - Platform unlit northwards
Vermilion Oil and Gas Australia

The *Wandoo A* platform, *Mo(U)15s* (20° 08'.33 S 116° 25'.29 E), is unlit.

Chart temporarily affected - Aus 327 - Aus 742 - Aus 4603 (INT 603) - Aus 4708 (INT 708) - Aus 4722 (INT 722) - Aus 4723 (INT 723)

339(T)/2026 AUSTRALIA - WESTERN AUSTRALIA - Dampier Archipelago - Mooring buoy unlit northwards
Vermilion Oil and Gas Australia

The lit mooring buoy, *Mo(U)Y.15s* (20° 06'.94 S 116° 26'.10 E), is unlit.

Chart temporarily affected - Aus 327 - Aus 742

340(T)/2026 AUSTRALIA - WESTERN AUSTRALIA - Fremantle - Drilling operations
Department of Transport WA Notice 6816/2026

Jack up barge *Sealift 2* and support vessels are conducting drilling operations in the vicinity of the following positions:

31° 57'.34 S 115° 40'.39 E
31° 57'.45 S 115° 40'.60 E
31° 57'.68 S 115° 40'.84 E
31° 57'.90 S 115° 41'.18 E
31° 58'.66 S 115° 41'.42 E
31° 59'.21 S 115° 41'.45 E
31° 59'.67 S 115° 41'.45 E
32° 00'.63 S 115° 41'.49 E
32° 04'.08 S 115° 42'.16 E
32° 05'.18 S 115° 42'.33 E
32° 06'.74 S 115° 42'.68 E
32° 08'.02 S 115° 42'.96 E.

Vessels will monitor VHF Ch 12 and Ch 16.

Mariners are advised to navigate with caution in the area. 50m clearance requested.

Chart temporarily affected - Aus 112 - Aus 117 - Aus 754

342(T)/2026 AUSTRALIA - WESTERN AUSTRALIA - Joseph Bonaparte Gulf - Subsea operations
Eni Australia Ltd

On or about 27 April 2026, vessels *Skandi Emerald* and *MMA Pinnacle* will begin well intervention works in position 13° 53'.69 S 128° 29'.05 E.

Chart temporarily affected - Aus 318

343(T)/2026 AUSTRALIA - WESTERN AUSTRALIA - Mandurah - Cable laying operations; diving operations
Department of Transport WA

Cable laying and diving operations are taking place in the vicinity of the following positions:

32° 31'.62 S 115° 37'.59 E
32° 28'.48 S 115° 44'.26 E.

Mariners are advised to navigate with caution in the area.

Chart temporarily affected - Aus 755

344(T)/2026 AUSTRALIA - WESTERN AUSTRALIA - Ningaloo Reef - Sandy Point to Winderabandi Point - Scientific instruments westwards

Former Notice - 217(T)/2026 is cancelled

The University of Western Australia , Department of Transport WA Notice 6799/2026

Rope and mooring tackle from a wave buoy that has broken free may be floating on or just below the surface in position 22° 24'.40 S 113° 40'.11 E.

Subsurface scientific instruments, 10m below the surface, exist in the following positions:

22° 26'.52 S 113° 39'.54 E

22° 26'.65 S 113° 36'.56 E

22° 28'.98 S 113° 38'.23 E.

Chart temporarily affected - Aus 745

345(T)/2026 AUSTRALIA - WESTERN AUSTRALIA - North West Cape - Obstruction northwards

Former Notice - 218(T)/2026 is cancelled

Santos

A direct turret mooring, with least depth 35m, exists in position 21° 24'.21 S 114° 05'.29 E.

Chart temporarily affected - Aus 328 - Aus 329 - Aus 744 - Aus 4723 (INT 723)

346(T)/2026 AUSTRALIA - WESTERN AUSTRALIA - Passage Islands - Scientific instruments

Department of Transport WA Notice 6807/2026

Special light buoys, *Fl. Y. 4s*, exist in the following positions:

20° 54'.68 S 115° 46'.13 E

20° 54'.95 S 115° 44'.76 E

20° 55'.13 S 115° 45'.39 E

20° 55'.21 S 115° 46'.82 E

20° 55'.25 S 115° 45'.37 E

20° 55'.63 S 115° 46'.20 E

20° 55'.81 S 115° 45'.03 E

20° 56'.43 S 115° 45'.26 E

20° 58'.32 S 115° 58'.44 E

21° 01'.07 S 115° 52'.63 E

21° 05'.06 S 115° 51'.76 E.

Mariners are advised to navigate with caution in the area.

Chart temporarily affected - Aus 742 - Aus 743

347(T)/2026 AUSTRALIA - WESTERN AUSTRALIA - Thevenard Island - Light buoy off station

Pilbara Ports Authority Notice A8/2026

The special light buoy, *Fl. 4s* (21° 24'.49 S 114° 52'.54 E), is off station.

Mariners are advised to navigate with caution in the area.

Chart temporarily affected - Aus 743 - Aus 744

SOUTH AUSTRALIA

81(T)/2021 AUSTRALIA - SOUTH AUSTRALIA - Gulf St Vincent - Rogues Point - Artificial reef Department of Planning, Transport and Infrastructure SA Notice 9/2017

An artificial reef is being developed in an area bounded by the following positions:

34° 30'.63 S 137° 53'.95 E
34° 30'.63 S 137° 54'.12 E
34° 30'.47 S 137° 54'.13 E
34° 30'.47 S 137° 53'.95 E.

A lit raft exists in position 34° 30'.59 S 137° 53'.99 E.

Chart temporarily affected - Aus 781

291(T)/2021 AUSTRALIA - SOUTH AUSTRALIA - Port Adelaide - Shoaling Department for Transport, Energy and Infrastructure SA Notice 38/2007

Silting has resulted in width restrictions being imposed in the main channel of the Port Adelaide River between No 40 beacon (34° 47'.86 S 138° 30'.79 E) and No 41 beacon (34° 48'.52 S 138° 30'.77 E).

Mariners should avoid the western side of the main channel and navigate with caution in this part of the River as the available navigable channel is now only 90 metres wide measured from the eastern edge.

Mariners intending to transit this section should contact the Manager Marine Operations, Flinders Ports Pty Ltd on (08) 8447 0622 to confirm maximum widths.

Chart temporarily affected - Aus 130

587(T)/2022 AUSTRALIA - SOUTH AUSTRALIA - Wallaroo - Point Hughes - Harbour works Department for Infrastructure and Transport SA Notice 18(T)/2022

Works associated with the construction of a new breakwater are in progress in the vicinity of position 33° 55'.88 S 137° 36'.29 E.

The works area is marked by special light buoys, *Fl.Y.4s*.

Mariners are advised to navigate with caution in the area.

Chart temporarily affected - Aus 777

724(T)/2023 AUSTRALIA - SOUTH AUSTRALIA - Port Lincoln - Boston Bay - Light beacon destroyed Department for Infrastructure and Transport SA Notice 44(T)/2023

The starboard lateral light beacon, *Fl.G.2s No3* (34° 41'.75 S 135° 52'.70 E), has been destroyed.

Mariners are advised to navigate with caution in the area.

Chart temporarily affected - Aus 134

1027(T)/2023 AUSTRALIA - SOUTH AUSTRALIA - Port Bonython - Scientific instrument Department for Infrastructure and Transport SA Notice 68(T)/2023

A subsurface scientific instrument, 1.5m above the seabed, exists in position 33° 00'.24 S 137° 47'.34 E.

Chart temporarily affected - Aus 136

168(T)/2024 AUSTRALIA - SOUTH AUSTRALIA - Kangaroo Island - American River - Wreck Department for Infrastructure and Transport SA Notice 7(T)/2024

A stranded wreck marked by an isolated danger light buoy, *Fl(2)4s*, exists in position 35° 47'.22 S 137° 46'.51 E.

Mariners are advised to navigate with caution in the area.

Chart temporarily affected - Aus 780

337(T)/2024 AUSTRALIA - SOUTH AUSTRALIA - Denial Bay - Obstruction

Department for Infrastructure and Transport SA Notice 23(T)/2024

A lost anchor exists in position 32° 14'.87 S 133° 30'.18 E.

Mariners are advised to navigate with caution in the area.

Chart temporarily affected - Aus 120 - Aus 341

459(T)/2024 AUSTRALIA - SOUTH AUSTRALIA - Yorke Peninsula - Sultana Point - Wreck

Department for Infrastructure and Transport SA Notice 27(T)/2024

A stranded wreck marked by an isolated danger light buoy, *Fl(2)5s*, exists in position 35° 05'.95 S 137° 45'.00 E.

Mariners are advised to navigate with caution in the area.

Chart temporarily affected - Aus 780 - Aus 781

573(T)/2024 AUSTRALIA - SOUTH AUSTRALIA - Cape Hardy - Scientific instruments

Department for Infrastructure and Transport SA Notice 37(T)/2024

Subsurface scientific instruments, 3m above the seabed, exist in the following positions:

34° 10'.03 S 136° 20'.90 E

34° 11'.05 S 136° 20'.47 E

34° 12'.01 S 136° 19'.80 E.

Mariners are advised to navigate with caution in the area.

Chart temporarily affected - Aus 777

574(T)/2024 AUSTRALIA - SOUTH AUSTRALIA - Spencer Gulf - Point Lowly - Scientific instruments

Former Notice - 36(T)/2024 is cancelled

Department for Infrastructure and Transport SA Notice 33(T)/2024

Subsurface scientific instruments, 1.5m above the seabed, exist in positions 33° 00'.46 S 137° 47'.55 E and 32° 58'.76 S 137° 48'.02 E.

Mariners are advised to navigate with caution in the area.

Chart temporarily affected - Aus 136

622(T)/2024 AUSTRALIA - SOUTH AUSTRALIA - Port Adelaide - Light beacon destroyed

Department for Infrastructure and Transport SA Notice 40(T)/2024

The light beacon, *Q.10M Entrance* (34° 46'.82 S 138° 22'.53 E), has been destroyed; a special virtual AIS exists in situ.

Mariners are advised to navigate with caution in the area.

Chart temporarily affected - Aus 130 - Aus 485 - Aus 781

757(T)/2024 AUSTRALIA - SOUTH AUSTRALIA - Gulf St Vincent - Port Gawler - Scientific instrument

Department for Infrastructure and Transport SA Notice 55(T)/2024

A subsurface scientific instrument exists in position 34° 42'.67 S 138° 22'.58 E.

Mariners are advised to navigate with caution in the area.

Chart temporarily affected - Aus 130 - Aus 485 - Aus 781

758(T)/2024 AUSTRALIA - SOUTH AUSTRALIA - Gulf St Vincent - Largs Bay to Glenelg - Scientific instruments

Department for Infrastructure and Transport SA Notice 52(T)/2024

Light buoys, *Fl. Y. 2-5s*, exist in the following positions:

34° 47'.98 S 138° 28'.78 E

34° 51'.30 S 138° 21'.02 E

34° 57'.28 S 138° 29'.30 E.

Mariners are advised to navigate with caution in the area.

Chart temporarily affected - Aus 130 - Aus 485 - Aus 781

921(T)/2024 AUSTRALIA - SOUTH AUSTRALIA - Port Adelaide - Scientific instruments

Department for Infrastructure and Transport SA Notice 72(T)/2024

A subsurface scientific instrument, 0.5m above the seabed, exists in position 34° 44'.16 S 138° 20'.37 E.

Special light buoys, *Fl. Y. 2s*, exist in positions 34° 40'.68 S 138° 25'.06 E and 34° 42'.56 S 138° 26'.80 E.

Mariners are advised to navigate with caution in the area.

Chart temporarily affected - Aus 130 - Aus 485 - Aus 781

1000(T)/2024 AUSTRALIA - SOUTH AUSTRALIA - Cape Hardy - Geotechnical operations

Department for Infrastructure and Transport SA Notice 54(T)/2024

Geotechnical operations are in progress in the vicinity of position 34° 10'.97 S 136° 19'.83 E.

Mariners are advised to navigate with caution in the area.

Chart temporarily affected - Aus 777

59(T)/2025 AUSTRALIA - SOUTH AUSTRALIA - Gulf St Vincent - Port Gawler - Scientific instrument

Former Notice - 305(T)/2024 is cancelled

Department for Infrastructure and Transport SA Notice 82(T)/2024

A subsurface scientific instrument exists on the seabed, with a minimum safe clearance of 2m, in position 34° 41'.89 S 138° 24'.83 E.

Mariners are advised to navigate with caution in the area.

Chart temporarily affected - Aus 781

147(T)/2025 AUSTRALIA - SOUTH AUSTRALIA - Cape Buffon - Light unlit

Former Notice - 1026(T)/2023 is cancelled

Department for Infrastructure and Transport SA Notice 12(T)/2025

The light, *Fl. WR. 2-5s 8/3M* (37° 33'.96 S 140° 06'.47 E), is unlit; a temporary light, *Fl. R. 2-5s 2M*, exists in situ.

Chart temporarily affected - Aus 348

501(T)/2025 AUSTRALIA - SOUTH AUSTRALIA - Gulf St Vincent - Carrickalinga - Topmark missing

Department for Infrastructure and Transport SA Notice 35(T)/2025

The topmark on isolated danger light beacon, *Fl(2) 6s 2M* (35° 25'.23 S 138° 18'.33 E), is missing.

Mariners are advised to navigate with caution in the area.

Chart temporarily affected - Aus 485 - Aus 780

502(T)/2025 AUSTRALIA - SOUTH AUSTRALIA - Island Point - Light beacons damaged and unlit

Department for Infrastructure and Transport SA Notice 36(T)/2025

The west cardinal light beacon, *Q(9)15s* (34° 25'.99 S 137° 24'.80 E), is unlit and the topmark is missing.

The light beacon, *Fl. R. 3s* (34° 26'.80 S 137° 23'.87 E), is unlit and the topmark is missing.

Mariners are advised to navigate with caution in the area.

Chart temporarily affected - Aus 776 - Aus 777

629(T)/2025 AUSTRALIA - SOUTH AUSTRALIA - Port Adelaide - Scientific instruments

Department for Infrastructure and Transport SA Notice 46(T)/2025

Scientific instruments marked by a special buoys exist in positions 34° 47'.01 S 138° 28'.07 E and 34° 47'.12 S 138° 27'.74 E.

Mariners are advised to navigate with caution in the area.

Chart temporarily affected - Aus 130

801(T)/2025 AUSTRALIA - SOUTH AUSTRALIA - Gulf St Vincent - Brighton - Scientific instruments

Department for Infrastructure and Transport SA Notice 54(T)/2025

Special light buoys, *Fl. Y.2-5s*, exist in positions 35° 01'.39 S 138° 27'.00 E and 35° 01'.45 S 138° 27'.24 E.

Mariners are advised to navigate with caution in the area.

Chart temporarily affected - Aus 781

923(P)/2025 AUSTRALIA - SOUTH AUSTRALIA - Cape Gantheaume - Shoaling southwards

Former Notice - 887(P)/2025 is cancelled

Australian Hydrographic Office

Latest survey indicates shoaler depths than those charted, with a least depth of 19.6m, may exist in an area bounded by the following positions:

35° 54'.97 S 137° 42'.26 E

35° 58'.25 S 137° 52'.38 E

36° 07'.48 S 137° 43'.19 E

36° 22'.38 S 137° 21'.69 E

36° 11'.15 S 137° 24'.09 E

36° 01'.52 S 137° 37'.52 E

Mariners are advised to navigate with caution in the area.

Products will be updated in due course.

Chart which will be affected - Aus 346

955(T)/2025 AUSTRALIA - SOUTH AUSTRALIA - Port Adelaide - Wonga Shoal - Light buoy off station; light buoy unlit

Department for Infrastructure and Transport SA Notice 68(T)/2025

The special light buoy, *Fl. Y.5s* (34° 49'.97 S 138° 26'.08 E), is unlit and off station. The current position of the light buoy is 34° 49'.84 S 138° 26'.52 E.

Chart temporarily affected - Aus 130

1051(T)/2025 AUSTRALIA - SOUTH AUSTRALIA - Port Adelaide - Outer Harbor - Harbour works

Department for Infrastructure and Transport SA Notice 71(T)/2025

Works associated with the remediation of a section of damaged breakwater are in progress in the vicinity of position 34° 45'.92 S 138° 29'.04 E.

Mariners are advised to navigate with caution in the area.

Chart temporarily affected - Aus 130

168(T)/2026 AUSTRALIA - SOUTH AUSTRALIA - Cowleds Landing - Drilling operations southwards

Department for Infrastructure and Transport SA Notice 10(T)/2026

Drilling operations are in progress in the vicinity of position 33° 13'.83 S 137° 26'.80 E.

Mariners are advised to navigate with caution in the area.

Chart temporarily affected - Aus 778

169(T)/2026 AUSTRALIA - SOUTH AUSTRALIA - Spencer Gulf - Light buoy unlit

Department for Infrastructure and Transport SA Notice 12(T)/2026

The port lateral light buoy, *Fl.R.2s No2* (33° 08'.12 S 137° 41'.11 E), is unlit.

Mariners are advised to navigate with caution in the area.

Chart temporarily affected - Aus 136 - Aus 778

261(T)/2026 AUSTRALIA - SOUTH AUSTRALIA - Shoalwater Point to Point Riley - Survey operations

Lesryk Environmental

Vessel *Manta*, with a towed array, and an ROV are conducting survey operations and diving operations between positions 33° 39'.51 S 137° 12'.97 E and 33° 52'.27 S 137° 36'.53 E.

The vessel will display appropriate lights and shapes and monitor VHF Ch 12 and Ch 16.

Mariners are advised to navigate with caution in the area. 50m clearance requested.

Chart temporarily affected - Aus 777 - Aus 778

262(T)/2026 AUSTRALIA - SOUTH AUSTRALIA - Spencer Gulf - Yarraville Shoals - Geotechnical operations westwards

Department for Infrastructure and Transport SA Notice 19(T)/2026

Geotechnical operations are in progress in the vicinity of position 33° 14'.50 S 137° 27'.78 E.

Mariners are advised to navigate with caution in the area.

Chart temporarily affected - Aus 778

304(P)/2026 AUSTRALIA - SOUTH AUSTRALIA - Kangaroo Island - Shoaling

Fugro

Latest surveys indicate shoaler depths than those charted exist in an area bounded by the following positions:

36° 07'.31 S 137° 22'.86 E

36° 21'.14 S 137° 22'.66 E

36° 20'.48 S 137° 14'.81 E

36° 07'.77 S 136° 43'.28 E

36° 03'.44 S 136° 45'.15 E

Mariners are advised to navigate with caution in the area.

ENC products have been updated, paper charts will be updated in due course.

Chart which will be affected - Aus 346 - Aus 485 - Aus 4709 (INT 709)

VICTORIA

350(T)/2021 AUSTRALIA - VICTORIA - Port Phillip - Corio Bay - Scientific instruments

Victorian Regional Channels Authority Notice 93(T)/2021

Scientific instruments exist on the seabed in the following positions:

38° 05'.17 S 144° 23'.31 E

38° 05'.35 S 144° 24'.20 E.

Chart temporarily affected - Aus 153 - Aus 157

409(T)/2021 AUSTRALIA - VICTORIA - Port Phillip - Corio Bay - Scientific instrument

Victorian Regional Channels Authority Notice 310(T)/2019

A scientific instrument marked by a special light buoy, *Fl. Y.*, exists on the seabed in position 38° 05'.07 S 144° 23'.25 E.

Chart temporarily affected - Aus 157

618(T)/2021 AUSTRALIA - VICTORIA - Port Phillip - Half Moon Bay - Obstructions

Parks Victoria Notices 215(T), 218(T)/2021

The jetty (37° 58'.09 S 145° 00'.58 E) has been demolished. Shoaling and obstructions may exist in the area north of the jetty.

Mariners are advised to navigate with caution in the area.

Chart temporarily affected - Aus 155

664(T)/2021 AUSTRALIA - VICTORIA - Western Port - Stony Point to Sandy Point - Shoaling

Victorian Regional Channels Authority Notice 199/2019

Shoaling exists in the vicinity of the following positions:

<i>Position</i>	<i>Least depth</i>	<i>Remarks</i>
38°25'.5 S 145° 13'.8 E	13.6m	Extending up to 100m into shipping channel
38°22'.8 S 145° 14'.7 E	13.2m	Extending up to 50m into shipping channel
38°21'.9 S 145° 14'.4 E	13.5m	Extending up to 40m into shipping channel
38°22'.1 S 145° 14'.3 E	13.8m	Extending up to 10m into shipping channel

Mariners are advised to navigate with caution in the area.

Chart temporarily affected - Aus 151

859(T)/2021 AUSTRALIA - VICTORIA - Western Port - Crib Point - Exclusion zone

Maritime Safety Victoria Notice 265(T)/2021

The Ex-HMAS OTAMA (Oberon class submarine) located 800 metres north of Crib Point jetty has been relocated to position 38° 20'.66 S 145° 13'.27 E, with a 200 metre exclusion zone.

A 200 metre exclusion zone remains at its previous location (38° 20'.48 S 145° 13'.45 E).

Mariners are advised to navigate with caution in the area.

Chart temporarily affected - Aus 151

1033(T)/2021 AUSTRALIA - VICTORIA - Port Phillip - Beaumaris Bay - Buoy

Parks Victoria Notice 353(T)/2021

A special buoy exists in position 37° 59'.50 S 145° 03'.56 E.

Chart temporarily affected - Aus 155

294(T)/2022 AUSTRALIA - VICTORIA - Port Phillip - Point Wilson - Exclusion zone

Former Notice - 1078(T)/2021 is cancelled

A 300m exclusion zone exists outwards from the centreline of Point Wilson Pier (38° 05'.54 S 144° 31'.48 E). It is marked by special light buoys, Iso.2s, in the following positions:

38° 05'.51 S 144° 30'.73 E
38° 05'.68 S 144° 31'.32 E
38° 05'.84 S 144° 31'.86 E
38° 05'.89 S 144° 32'.45 E
38° 05'.64 S 144° 32'.48 E
38° 05'.55 S 144° 32'.04 E
38° 05'.38 S 144° 31'.47 E
38° 05'.20 S 144° 30'.93 E.

Only vessels involved in the remediation works are permitted to enter the area.

Mariners are advised to navigate with caution in the area.

Chart temporarily affected - Aus 143 - Aus 157

630(T)/2022 AUSTRALIA - VICTORIA - Cape Duquesne - Scientific instruments

Maritime Safety Victoria Notice 165(T)/2019

Scientific instruments exist as follows:

<i>Position</i>	<i>Remarks</i>
38° 24'.52 S 141° 16'.26 E	25m below surface
38° 24'.24 S 141° 17'.48 E	84m below surface
38° 24'.10 S 141° 18'.04 E	76m below surface
38° 23'.97 S 141° 18'.60 E	69m below surface
38° 23'.83 S 141° 19'.16 E	70m below surface
38° 23'.69 S 141° 19'.73 E	67m below surface
38° 23'.56 S 141° 20'.25 E	67m below surface
38° 23'.44 S 141° 20'.73 E	61m below surface
38° 23'.34 S 141° 21'.18 E	50m below surface
38° 23'.24 S 141° 21'.57 E	30m below surface
38° 23'.15 S 141° 21'.91 E	18m below surface.

Chart temporarily affected - Aus 140 - Aus 348 - Aus 349

747(T)/2022 AUSTRALIA - VICTORIA - Ninety Mile Beach - Traffic separation scheme southwestwards

Australian Maritime Safety Authority

Decommissioning of oil and gas infrastructure will take place at Blackback Prod Well (38° 32'.42 S 148° 33'.24 E), Gudgeon Well (38° 30'.82 S 148° 28'.17 E) and Terakihi Well (38° 30'.27 S 148° 32'.89 E).

New temporary shipping fairways and a separation zone have been established to keep transiting ships away from decommissioning activities. The new shipping fairways and separation zone are bound by the following positions:

Northeast bound lane	38° 36'.941 S	148° 45'.842 E
	38° 39'.507 S	148° 48'.047 E
	38° 44'.600 S	148° 23'.000 E
	38° 42'.034 S	148° 20'.795 E.
Southwest bound lane	38° 33'.407 S	148° 42'.545 E
	38° 35'.750 S	148° 44'.746 E
	38° 40'.844 S	148° 19'.699 E
	38° 38'.500 S	148° 17'.500 E.
Separation zone	38° 35'.750 S	148° 44'.746 E
	38° 36'.941 S	148° 45'.842 E
	38° 42'.034 S	148° 20'.795 E
	38° 40'.844 S	148° 19'.699 E.

The fairways and separation zone come into effect on 1 August 2022 at 0000 UTC and will remain in place until further notice.

Mariners should follow the appropriate traffic lane and navigate in the general direction of traffic flow for that lane. They should, as far as practicable, keep clear of the separation zone.

Due to an increased risk of collision, particularly with vessels that may be restricted in their ability to manoeuvre, mariners should keep a good look out and take early action to avoid collisions.

Note: For e-notice users, please see full edition for map.

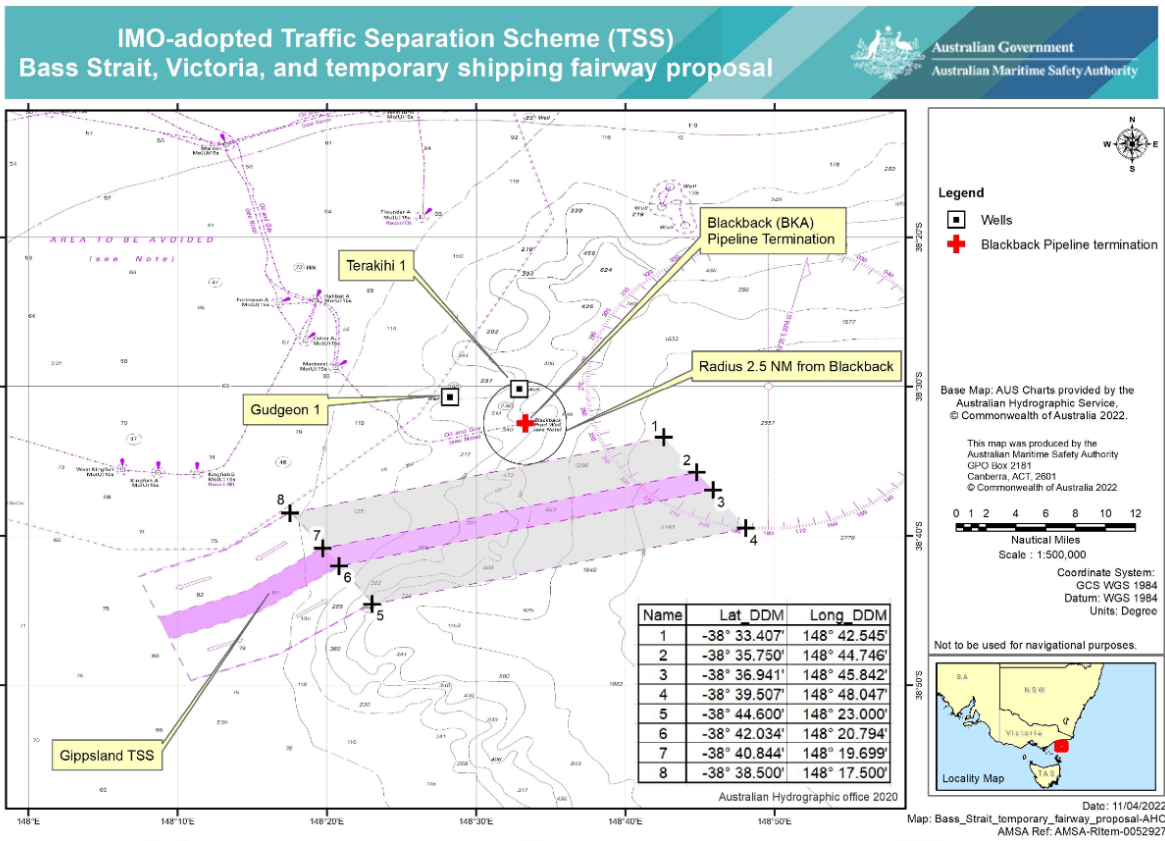


Chart temporarily affected - Aus 357 - Aus 487

754(T)/2022 AUSTRALIA - BASS STRAIT - Racon non operational
Australian Maritime Safety Authority Auscoast Warning 171/2021

The racon at the *Flounder A* platform (38° 18'.65 S 148° 26'.36 E) is non operational.

Chart temporarily affected - Aus 357 - Aus 487

112(T)/2023 AUSTRALIA - VICTORIA - Ninety Mile Beach - Virtual AIS southeastwards
Australian Maritime Safety Authority

Special virtual AIS have been established in the Gippsland region to denote an area of oil and gas decommissioning work in the following positions:

- 38° 23'.54 S 148° 36'.38 E
- 38° 24'.59 S 148° 30'.93 E
- 38° 25'.75 S 148° 25'.49 E
- 38° 29'.10 S 148° 36'.38 E
- 38° 31'.31 S 148° 25'.49 E
- 38° 34'.65 S 148° 36'.38 E
- 38° 35'.76 S 148° 30'.93 E
- 38° 36'.87 S 148° 25'.49 E.

Transiting ships are requested to keep clear of the area marked by the special virtual AIS.

ANTM 747(T)/2022 refers.

Chart temporarily affected - Aus 357 - Aus 487

465(T)/2023 AUSTRALIA - VICTORIA - Port Phillip Bay - Wreck
Ports Victoria Notice 218(T)/2023

A wreck, least depth 11₄m, exists in position 37° 55'.93 S 144° 56'.86 E.

Chart temporarily affected - Aus 143 - Aus 155

340(T)/2024 AUSTRALIA - VICTORIA - Port Phillip - Sorrento - Harbour works
Parks Victoria Notice 155(T)/2024

Construction works are in progress at Sorrento Ferry Terminal (38° 20'.16 S 144° 44'.75 E).

An exclusion zone exists in an area bounded by the coast and the following:

<i>Position</i>	<i>Remarks</i>
38° 20'.20 S 144° 44'.72 E	marked by buoy
38° 20'.21 S 144° 44'.74 E	marked by buoy
38° 20'.21 S 144° 44'.76 E	marked by buoy
38° 20'.22 S 144° 44'.80 E	marked by buoy
38° 20'.23 S 144° 44'.83 E	marked by buoy
38° 20'.16 S 144° 44'.78 E.	

Only vessels involved in the works, Searoad Ferries and Parks Victoria officers are permitted to enter the area.

All hazards to navigation will display appropriate lights and shapes.

Mariners are advised to navigate with caution in the area.

Chart temporarily affected - Aus 143

376(T)/2024 AUSTRALIA - VICTORIA - Ninety Mile Beach - Platform unlit eastwards
Australian Maritime Safety Authority Auscoast Warning 24/2024

The *Kingfish B* platform, *Mo(U)15s* (38° 35'.82 S 148° 11'.28 E), is unlit.

Chart temporarily affected - Aus 357 - Aus 487 - Aus 4601 (INT 601)

504(T)/2024 AUSTRALIA - VICTORIA - Port Phillip - Point Wilson Bank - Light buoy off station
Ports Victoria Notice 248(T)/2024

The special light buoy, *Fl. Y. 6s* (38° 06'.10 S 144° 31'.24 E), is off station.

Mariners are advised to navigate with caution in the area.

Chart temporarily affected - Aus 157

625(T)/2024 AUSTRALIA - VICTORIA - Western Port - North Arm - Scientific instrument
Ports Victoria Notice 302(T)/2024

A subsurface scientific instrument, 1m above the seabed, exists in position 38° 19'.79 S 145° 13'.93 E.

Mariners are advised to navigate with caution in the area.

Chart temporarily affected - Aus 151

659(T)/2024 AUSTRALIA - VICTORIA - Corner Inlet - Scientific instruments eastwards
Former Notice - 169(T)/2024 is cancelled
RPS Group

Subsurface scientific instruments, 20m below the surface, exist in the following positions:

38° 45'.19 S 147° 05'.63 E
38° 50'.96 S 147° 17'.54 E
38° 55'.81 S 146° 50'.01 E
39° 03'.61 S 147° 39'.05 E
39° 21'.71 S 146° 58'.05 E.

Chart temporarily affected - Aus 357 - Aus 487 - Aus 802

933(P)/2024 AUSTRALIA - VICTORIA - Port Phillip - Popes Eye Bank - Shoaling southwards
Port of Melbourne Operations

Latest survey indicates shoaler depths than those charted exist in the vicinity of position 38° 17'.0 S 144° 42'.2 E.

Mariners are advised to navigate with caution in the area.

Electronic Navigation Charts (ENCs) have been updated. Paper Charts will be updated in due course.

Chart which will be affected - Aus 143 - Aus 144

934(T)/2024 AUSTRALIA - VICTORIA - Port Phillip - Exclusion zone

Ports Victoria Notice 483(T)/2024

Due to debris on the sea floor, a 20m exclusion zone exists around No9 light beacon (37° 53'.19 S 144° 55'.75 E) extending to the north, east and south.

Mariners are advised to navigate with caution in the area.

Chart temporarily affected - Aus 155

62(T)/2025 AUSTRALIA - VICTORIA - Ninety Mile Beach - Geotechnical operations

Former Notice - 927(T)/2024 is cancelled

Safe Transport Victoria Notice 2(T)/2025

MV *Samson Explorer* is conducting subsea geotechnical and diving operations in an area bounded by the coast and the following positions:

38° 14'.45 S 147° 21'.94 E

38° 15'.83 S 147° 23'.67 E

38° 15'.72 S 147° 25'.25 E

38° 14'.44 S 147° 25'.10 E

38° 14'.08 S 147° 22'.40 E.

Mariners are advised to navigate with caution in the area. 500m clearance requested.

Chart temporarily affected - Aus 357 - Aus 487

67(T)/2025 AUSTRALIA - VICTORIA - Portland Bay to Childers Cove - Scientific instruments southwards

RPS Group

Subsurface scientific instruments, 15m above seabed, exist in the following positions:

38° 30'.85 S 141° 49'.17 E

38° 33'.86 S 142° 18'.53 E

38° 40'.79 S 142° 02'.60 E

38° 50'.39 S 142° 35'.64 E.

Mariners are advised to navigate with caution in the area.

Chart temporarily affected - Aus 140 - Aus 349

152(T)/2025 AUSTRALIA - VICTORIA - Ninety Mile Beach - Platform unlit eastwards

Australian Maritime Safety Authority Auscoast Warning 33/2025

The *Mackerel* platform, *Mo(U)15s* (38° 28'.73 S 148° 20'.56 E), is unlit.

Chart temporarily affected - Aus 357 - Aus 487 - Aus 4060 (INT 60) - Aus 4601 (INT 601)

158(T)/2025 AUSTRALIA - BASS STRAIT - Hogan Group - Scientific instrument northeastwards

Orsted

A special light buoy, *Fl(5)Y.20s*, exists in position 39° 06'.23 S 147° 29'.70 E.

Chart temporarily affected - Aus 357 - Aus 487

160(T)/2025 AUSTRALIA - BASS STRAIT - Kent Group - Scientific instruments northwards

Bhagwan Marine

Subsurface scientific instruments, 1.5m above the seabed, exist in the following positions:

39° 04'.63 S 147° 59'.49 E

39° 07'.26 S 147° 16'.15 E

39° 16'.38 S 147° 31'.76 E

39° 21'.68 S 147° 04'.50 E.

Mariners are advised to navigate with caution in the area.

Chart temporarily affected - Aus 357 - Aus 487 - Aus 802

196(P)/2025 AUSTRALIA - VICTORIA - Port Phillip - Wreck

Ports Victoria

Latest survey indicates a wreck, with least depth *21.5m*, exists in position 38° 08'.09 S 144° 56'.58 E.

Charts will be updated in due course.

Chart which will be affected - Aus 143

231(T)/2025 AUSTRALIA - VICTORIA - Cape Otway - Artificial reef southwards

Polaris Marine

Vessels *Constructor 3* and *Leaders Creek* are conducting works to establish an artificial reef in the vicinity of position 38° 58'.08 S 143° 31'.77 E.

Mariners are advised to navigate with caution in the area and keep well clear of the works.

Chart temporarily affected - Aus 349 - Aus 487

235(T)/2025 AUSTRALIA - VICTORIA - Portland - Shoaling

Port of Portland Notice 62(T)/2025

Shoaling extends approximately 90 metres to the west of the breakwater (38° 20'.65 S 141° 37'.37 E), with a least depth of *6.7m* at the channel toe line. Shoaling decreases as it extends west to a depth of *10m*.

Mariners are advised to navigate with caution in the area.

Chart temporarily affected - Aus 140

268(P)/2025 AUSTRALIA - VICTORIA - Kate Kearney Channel to McLoughlins Entrance - Shoaling

Former Notice - 895(P)/2020 is cancelled

Gippsland Ports

Latest survey shows shoaling and channel realignment in the following channels:

Kate Kearney Channel (38° 41'.7 S 146° 43'.0 E)

Kate Kearney Entrance (38° 41'.5 S 146° 45'.1 E)

Tarra Channel (38° 40'.8 S 146° 45'.7 E)

Boat Harbour Channel (38° 40'.4 S 146° 48'.4 E)

Pelican Channel (38° 39'.3 S 146° 48'.7 E)

Manns Beach Channel (38° 38'.8 S 146° 47'.4 E)

Manns Channel (38° 40'.5 S 146° 49'.6 E)

Oyster Bed Channel (38° 38'.5 S 146° 51'.2 E)

McLoughlins Entrance (38° 37'.8 S 146° 53'.0 E).

Mariners are advised to navigate with caution in the area.

Charts will be updated in due course.

Chart which will be affected - Aus 181

271(T)/2025 AUSTRALIA - VICTORIA - Port Fairy - Scientific instrument southwards

Deakin University

A special light buoy, *Fl.Y.2-5s*, exists in positions 38° 38'.55 S 142° 18'.69 E.

Chart temporarily affected - Aus 349

310(T)/2025 AUSTRALIA - VICTORIA - Port Philip - Sampling works
Ports Victoria Notice 173(T)/2025

The vessel *Lobo* is conducting sampling works, which involves the towing of nets 5m in length, in an area bounded by the following positions:

37° 59'.66 S 144° 50'.48 E
38° 06'.22 S 144° 49'.21 E
38° 04'.98 S 144° 31'.04 E
38° 03'.22 S 144° 31'.36 E
38° 01'.99 S 144° 34'.02 E
38° 00'.73 S 144° 35'.14 E
38° 00'.83 S 144° 37'.40 E.

The vessel can be contacted on 0423 771 047 / 0415 892 572 or on VHF Ch 12.

Mariners are advised to navigate with caution in the area. Minimum passing distance of 100m requested.

Chart temporarily affected - Aus 143 - Aus 155 - Aus 157

313(T)/2025 AUSTRALIA - VICTORIA - Portland - Light unlit
Parks Victoria Notice 158(T)/2025

The light (38° 20'.70 S 141° 37'.18 E), *F.G.*, is unlit.

The light (38° 20'.70 S 141° 37'.18 E), *Oc.G.2.5s 19m*, is operating at reduced intensity.

Mariners are advised to navigate with caution in the area.

Chart temporarily affected - Aus 140

348(T)/2025 AUSTRALIA - VICTORIA - Port Phillip - Beaumaris Bay - Obstruction
Parks Victoria

An above water obstruction exists in position 37° 59'.38 S 145° 02'.83 E.

Mariners are advised to navigate with caution in the area.

Chart temporarily affected - Aus 155

420(T)/2025 AUSTRALIA - VICTORIA - Ninety Mile Beach - Platform unlit eastwards
Australian Maritime Safety Authority Auscoast Warning 142/2025

The *Dolphin* platform, *Mo(U)15s* (38° 29'.24 S 147° 22'.65 E), is unlit.

Chart temporarily affected - Aus 357 - Aus 487 - Aus 4601 (INT 601)

505(T)/2025 AUSTRALIA - VICTORIA - Ninety Mile Beach - Scientific instrument southwards
RPS Group

A special light buoy, *Q(5)Y.20s*, exists in position 38° 38'.58 S 147° 22'.98 E.

Chart temporarily affected - Aus 357 - Aus 487

507(T)/2025 AUSTRALIA - VICTORIA - Port Campbell - Subsea operations southwards
Delmar Systems

On or about 15 June 2025, pre-lay mooring operations will be conducted in the vicinity of position 39° 06'.68 S 142° 55'.72 E.

Mariners are advised to navigate with caution in the area.

Chart temporarily affected - Aus 349

574(T)/2025 AUSTRALIA - VICTORIA - Port Phillip - Scientific instruments

Parks Victoria Notice 333(T)/2025

Special light buoys, *Fl. Y.2-5s*, exist in the following positions:

37° 58'.72 S 144° 59'.73 E

38° 08'.16 S 144° 45'.18 E

38° 09'.73 S 145° 03'.26 E

38° 18'.09 S 144° 52'.36 E

38° 18'.50 S 144° 41'.52 E

38° 18'.95 S 144° 42'.74 E

38° 19'.22 S 144° 43'.91 E.

Mariners are advised to navigate with caution in the area.

Chart temporarily affected - Aus 143 - Aus 144 - Aus 155 - Aus 157

579(T)/2025 AUSTRALIA - VICTORIA - Warrnambool - Scientific instrument southwards unlit

Former Notice - 517(T)/2025 is cancelled

BMT

The special light buoy, *Fl. Y.4s* (38° 29'.27 S 142° 27'.43 E), is unlit.

Mariners are advised to navigate with caution in the area.

Chart temporarily affected - Aus 349

632(T)/2025 AUSTRALIA - VICTORIA - Ninety Mile Beach - Scientific instruments southwards

GHD

Subsurface scientific instruments, 2m above seabed, exist in the following positions:

38° 31'.61 S 147° 08'.96 E

38° 29'.20 S 147° 11'.99 E

38° 37'.24 S 147° 14'.53 E.

Mariners are advised to navigate with caution in the area.

Chart temporarily affected - Aus 357

634(T)/2025 AUSTRALIA - VICTORIA - Port Campbell - Well plug and abandonment works southwards

Former Notice - 422(T)/2025 is cancelled

Woodside Energy Ltd

The Minerva wells have been plugged and abandoned. Anchors and rig moorings remain in the vicinity of the Minerva wells (38° 42'.38 S 142° 57'.55 E).

Mariners are advised to navigate with caution in the area.

Chart temporarily affected - Aus 349

637(T)/2025 AUSTRALIA - VICTORIA - Port Phillip - Corio Bay - Scientific instrument

Ports Victoria Notice 353(T)/2025

A special light buoy, *Fl. Y.3s*, exists in position 38° 05'.00 S 144° 23'.67 E.

Mariners are advised to navigate with caution in the area.

Chart temporarily affected - Aus 157

638(T)/2025 AUSTRALIA - VICTORIA - Port Phillip - Scientific instruments

Parks Victoria Notice 355(T)/2025

Special light buoys, *Fl. Y.3s*, exist in the following positions:

38° 04'.85 S 144° 23'.89 E

38° 05'.08 S 144° 24'.09 E

38° 05'.27 S 144° 24'.44 E.

Mariners are advised to navigate with caution in the area.

Chart temporarily affected - Aus 157

683(T)/2025 AUSTRALIA - VICTORIA - Ninety Mile Beach - Scientific instruments southwards

Former Notice - 633(T)/2025 is cancelled

RPS Group

Special light buoys, Q(5)Y.20s, exist in positions 38° 33'.74 S 147° 12'.50 E and 38° 38'.63 S 147° 14'.62 E.

Chart temporarily affected - Aus 357 - Aus 487

721(T)/2025 AUSTRALIA - VICTORIA - Ninety Mile Beach - Scientific instruments southwards

ERM

Subsurface scientific instruments, 1.5m above seabed, exist in the following positions:

38° 41'.37 S 147° 12'.82 E

38° 28'.37 S 147° 18'.00 E

38° 47'.19 S 147° 25'.73 E

38° 38'.10 S 147° 30'.75 E

38° 41'.08 S 147° 48'.67 E.

Mariners are advised to navigate with caution in the area.

Chart temporarily affected - Aus 357 - Aus 487

891(T)/2025 AUSTRALIA - BASS STRAIT - Mooring buoys

Delmar Systems , Australian Maritime Safety Authority Auscoast Warning 268/2025

8 lit yellow mooring buoys, Fl.3s, exist within 1M radius of 39° 14'.22 S 145° 15'.22 E. 2.5M clearance requested.

Chart temporarily affected - Aus 487

925(T)/2025 AUSTRALIA - VICTORIA - Port Campbell - Survey operations southwestwards

Blue Ocean Marine Tech Systems

An AUV is conducting survey operations in an area bounded by the following positions:

39° 16'.55 S 142° 22'.63 E

39° 16'.55 S 143° 02'.60 E

38° 50'.05 S 143° 02'.60 E

38° 50'.05 S 142° 22'.63 E.

Mariners are advised to navigate with caution in the area.

Chart temporarily affected - Aus 349

956(T)/2025 AUSTRALIA - VICTORIA - Ninety Mile Beach - Scientific instruments southwards

RPS Group

Subsurface scientific instruments, 2m above the seabed, exist in the following positions:

38° 52'.66 S 147° 48'.57 E

38° 56'.10 S 147° 52'.89 E

38° 56'.54 S 147° 38'.51 E

38° 56'.71 S 147° 48'.39 E

38° 58'.12 S 147° 42'.68 E

38° 58'.87 S 147° 57'.02 E

38° 59'.32 S 147° 48'.03 E

39° 00'.12 S 147° 53'.67 E.

Mariners are advised to navigate with caution in the area.

Chart temporarily affected - Aus 357 - Aus 487

957(T)/2025 AUSTRALIA - VICTORIA - Ninety Mile Beach - Scientific instruments southwards

CSIRO

Subsurface scientific instruments, 4m above the seabed, exist in areas bounded by the following positions:

40° 47'.42 S 146° 18'.38 E
40° 46'.86 S 147° 26'.26 E
40° 21'.48 S 147° 25'.81 E
40° 21'.92 S 146° 17'.94 E;
and
39° 46'.00 S 146° 32'.15 E
39° 44'.33 S 146° 34'.84 E
39° 19'.71 S 146° 06'.65 E
39° 21'.37 S 146° 04'.17 E;
and
39° 37'.69 S 147° 47'.37 E
39° 36'.54 S 147° 50'.71 E
39° 03'.70 S 147° 25'.54 E
39° 04'.88 S 147° 22'.85 E;
and
38° 53'.41 S 147° 16'.12 E
38° 38'.13 S 147° 00'.68 E
38° 39'.78 S 146° 58'.22 E
38° 55'.05 S 147° 13'.40 E;
and
38° 39'.86 S 147° 52'.47 E
38° 14'.89 S 147° 29'.25 E
38° 16'.52 S 147° 26'.81 E
38° 41'.30 S 147° 49'.71 E;
and
37° 57'.67 S 148° 00'.32 E
38° 22'.94 S 148° 22'.51 E
38° 21'.20 S 148° 24'.92 E
37° 56'.13 S 148° 02'.78 E.

Mariners are advised to navigate with caution in the area.

Chart temporarily affected - Aus 357 - Aus 487 - Aus 798 - Aus 800 - Aus 802

962(T)/2025 AUSTRALIA - VICTORIA - Warrnambool - Scientific instruments southwards
CSIRO

Subsurface scientific instruments, 4m above the seabed, exist in an area bounded by the following positions:

38° 39'.88 S 142° 28'.24 E
38° 41'.25 S 142° 35'.79 E
38° 35'.49 S 142° 37'.71 E
38° 31'.49 S 142° 33'.29 E
38° 27'.58 S 142° 23'.43 E
38° 29'.64 S 142° 09'.90 E
38° 35'.02 S 142° 12'.47 E.

Mariners are advised to navigate with caution in the area.

Chart temporarily affected - Aus 349

1055(T)/2025 AUSTRALIA - VICTORIA - Port Campbell - Mooring buoy southwards
Delmar Systems

A lit yellow mooring buoy, *Fl.3s*, exists in position 39° 05'.71 S 142° 55'.22 E. 2.5M clearance requested.

Chart temporarily affected - Aus 349

1056(T)/2025 AUSTRALIA - VICTORIA - Port Phillip - Kirk Point - Geotechnical operations eastwards
Ports Victoria Notice 580(T)/2025

Jack up barge *Sealift 3* and support vessels are conducting geotechnical operations in an area bounded by the following positions:

38° 02'.05 S 144° 47'.91 E
38° 02'.82 S 144° 47'.91 E
38° 02'.76 S 144° 36'.71 E
38° 03'.05 S 144° 34'.70 E
38° 02'.31 S 144° 33'.52 E

38° 02'.11 S 144° 33'.76 E
38° 02'.60 S 144° 34'.70 E
38° 02'.34 S 144° 36'.43 E
38° 02'.23 S 144° 40'.27 E.

Vessels will display appropriate lights and shapes and will monitor VHF Ch 12.

Mariners are advised to navigate with caution in the area and are requested to maintain a minimum passing distance of 500m.

Chart temporarily affected - Aus 143 - Aus 155 - Aus 157

1085(T)/2025 AUSTRALIA - VICTORIA - Ninety Mile Beach - Scientific instrument southwards
Ocean Winds

A light buoy, *Fl.Y.4s*, with AIS exists in position 38° 58'.42 S 147° 51'.54 E.

Chart temporarily affected - Aus 357 - Aus 487

34(T)/2026 AUSTRALIA - VICTORIA - Ninety Mile Beach - Drill rig eastwards
Former Notice - 1052(T)/2025 is cancelled
MODU *Valaris 107*

Drill rig *Valaris 107* is conducting drilling operations in position 38° 13'.77 S 148° 13'.24 E.

Chart temporarily affected - Aus 357

127(T)/2026 AUSTRALIA - VICTORIA - Ninety Mile Beach - Survey operations
Fathom Pacific

Vessel, *Bass Trek*, is conducting benthic survey operations in an area bounded by the following positions:

38° 33'.62 S 146° 58'.38 E
38° 51'.56 S 147° 24'.70 E
38° 37'.21 S 147° 40'.97 E
38° 20'.65 S 147° 13'.94 E.

AUV operations will be undertaken at various locations within the survey area.

Mariners are advised to navigate with caution in the area.

Chart temporarily affected - Aus 357 - Aus 802

128(T)/2026 AUSTRALIA - VICTORIA - Ninety Mile Beach - Survey operations
EGS Survey Pty Ltd , Safe Transport Victoria Notice 74(T)/2026

Vessels *PMG Emerald* and *Investigator*, with a 500m towed array, are conducting survey operations in an area bounded by the following positions:

39° 09'.53 S 147° 53'.77 E
38° 48'.17 S 148° 14'.91 E
38° 23'.05 S 147° 10'.92 E
38° 35'.90 S 146° 55'.71 E.

The vessels will display appropriate lights and shapes and monitor VHF Ch 16.

Mariners are advised to navigate with caution in the area. 1000m clearance requested.

Chart temporarily affected - Aus 181 - Aus 357 - Aus 802

130(T)/2026 AUSTRALIA - VICTORIA - Port Phillip - Limeburners Point - Light beacon unlit
Parks Victoria Notice 018(T)/2026

The light beacon, *Fl.R.3s* (38° 08'.57 S 144° 23'.14 E), is unlit.

Mariners are advised to navigate with caution in the area.

Chart temporarily affected - Aus 157

175(T)/2026 AUSTRALIA - VICTORIA - Port Phillip - Mud Islands - Light buoy off station northeastwards
Parks Victoria Notice 103(T)/2026

The east cardinal light buoy, *Q(3)10s* (38° 13'.91 S 144° 50'.61 E), is off station.

Mariners are advised to navigate with caution in the area.

Chart temporarily affected - Aus 143

177(T)/2026 AUSTRALIA - VICTORIA - Warratah Bay - Scientific instrument
Deakin University

A special light buoy, *Fl.Y.2-5s*, exists in position 38° 51'.19 S 146° 00'.44 E.

Chart temporarily affected - Aus 801 - Aus 802

263(T)/2026 AUSTRALIA - VICTORIA - Golden Beach - Survey operations
GB Energy, Safe Transport Victoria Notice 137(T)/2026

On or about 23 March 2026, vessels *Bass Trek* and *Survey 1*, with a towed array, will begin geophysical survey operations in an area bounded by the coast and the following positions:

38° 15'.05 S 147° 21'.16 E
38° 16'.02 S 147° 25'.33 E
38° 14'.99 S 147° 26'.67 E
38° 14'.14 S 147° 26'.67 E
38° 13'.51 S 147° 23'.13 E.

Vessels will display appropriate lights and shapes and will monitor VHF Ch 16.

Mariners are advised to navigate with caution in the area. 500m clearance requested.

Chart temporarily affected - Aus 357

305(T)/2026 AUSTRALIA - VICTORIA - Port Phillip - St Kilda - Light buoy off station
Parks Victoria Notice 147(T)/2026

The special light buoy, *Fl(4)Y.10s RMYSE* (37° 52'.16 S 144° 57'.81 E), is off station.

Mariners are advised to navigate with caution in the area.

Chart temporarily affected - Aus 155

310(T)/2026 AUSTRALIA - BASS STRAIT - Military exercise
Department of Defence

During the period 6 April to 6 May 2026, a military exercise consisting of multiple military ships, fixed and rotary wing aircraft will be conducted in an area bounded by the following positions:

38° 36'.0 S 144° 31'.8 E
40° 24'.6 S 144° 44'.4 E
40° 51'.6 S 148° 24'.6 E
41° 58'.8 S 148° 24'.6 E
42° 01'.8 S 149° 22'.8 E
38° 12'.6 S 149° 02'.4 E.

Military assets may act in a random and dynamic manner, including military aircraft operating at low altitude. However, at all time military ships and aircraft will act with due regard to other vessels and users utilising the area.

Mariners are advised to navigate with caution in the area.

Chart temporarily affected - Aus 151 - Aus 179 - Aus 181 - Aus 349 - Aus 357 - Aus 487 - Aus 766 - Aus 767 - Aus 790 - Aus 798 - Aus 800 - Aus 801 - Aus 802 - Aus 4601 (INT 601) - Aus 4709 (INT 709)

349(T)/2026 AUSTRALIA - VICTORIA - Bass Strait - Cable laying operations
Gulf Agency Company (Australia)

Cable laying operations will be conducted in Bass Strait as part of the Honomoana and Talaylink cable systems. Cable lay and post lay inspection activities will occur along the route shown in the diagram and mariners are advised to keep clear of vessel, *Resolute* during activities. Further advice on specific areas of activity will be issued through the AUSCOAST warning system.

Note: For e-notice users, please see full edition for map.

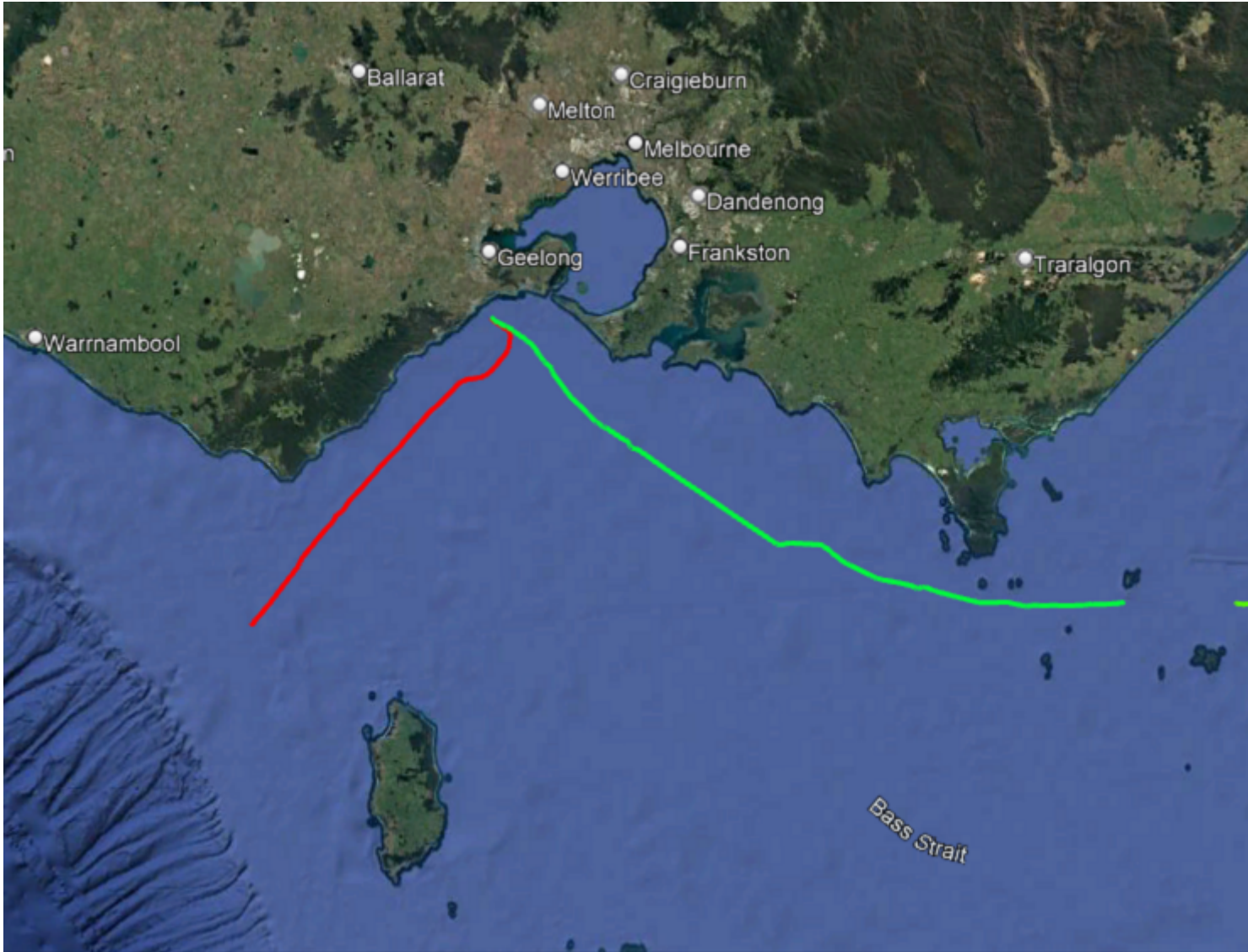


Chart temporarily affected - Aus 349 - Aus 357 - Aus 487 - Aus 801 - Aus 802

352(T)/2026 AUSTRALIA - VICTORIA - Port Phillip - Brighton - Light buoy off station
Parks Victoria Notice 203(T)/2026

The special light buoy, *Fl(3)Y.10s R2* (37° 54'.54 S 144° 56'.34 E), is off station.

Chart temporarily affected - Aus 155

TASMANIA

627(T)/2016 AUSTRALIA - TASMANIA - Pipe Clay Head to Pitt Water - Scientific instruments

Former Notice - 309(T)/2014 is cancelled

University of Tasmania

Subsurface scientific instruments exist in the following positions:

42° 48'.25 S 147° 29'.91 E
42° 48'.29 S 147° 31'.42 E
42° 48'.43 S 147° 30'.02 E
42° 49'.18 S 147° 34'.71 E
42° 50'.70 S 147° 33'.57 E
42° 50'.74 S 147° 35'.11 E
42° 50'.90 S 147° 36'.91 E
42° 51'.05 S 147° 32'.08 E
42° 51'.33 S 147° 35'.89 E
42° 51'.69 S 147° 34'.85 E
42° 51'.82 S 147° 30'.92 E
42° 51'.82 S 147° 33'.36 E
42° 52'.35 S 147° 32'.10 E
42° 52'.70 S 147° 36'.29 E
42° 52'.94 S 147° 34'.16 E
42° 53'.24 S 147° 31'.16 E
42° 53'.79 S 147° 32'.67 E
42° 53'.88 S 147° 37'.33 E
42° 54'.20 S 147° 35'.44 E
42° 54'.37 S 147° 30'.53 E
42° 54'.47 S 147° 40'.80 E
42° 54'.67 S 147° 33'.87 E
42° 54'.92 S 147° 40'.78 E
42° 55'.13 S 147° 31'.80 E
42° 55'.36 S 147° 40'.76 E
42° 55'.81 S 147° 40'.74 E
42° 56'.99 S 147° 39'.68 E
42° 57'.04 S 147° 38'.01 E
42° 57'.15 S 147° 39'.22 E
42° 57'.15 S 147° 37'.41 E
42° 57'.28 S 147° 36'.79 E
42° 57'.40 S 147° 36'.20 E
42° 57'.51 S 147° 35'.59 E
42° 57'.62 S 147° 34'.99 E
42° 57'.73 S 147° 34'.44 E
42° 57'.86 S 147° 33'.85 E
42° 57'.96 S 147° 33'.30 E.

Chart temporarily affected - Aus 171 - Aus 796

263(T)/2018 AUSTRALIA - TASMANIA - Devonport - Shoaling

HydroSurvey Australia

Shoaling exists in the Mersey River between positions 41° 11'.20 S 146° 21'.98 E and 41° 11'.48 S 146° 22'.10 E.

Mariners are advised to navigate with caution in the area.

Chart temporarily affected - Aus 164

522(T)/2020 AUSTRALIA - TASMANIA - D'Entrecasteaux Channel - Tower Bay - Harbour works; light buoys

Marine and Safety Tasmania Notice M98/2020

Mooring works are in progress, marked by special light buoys as follows:

<i>Position</i>	<i>Remarks</i>
43° 23'.38 S 147° 02'.34 E	<i>Fl.Y.4s</i>
43° 23'.46 S 147° 02'.27 E	<i>Fl.Y.4s</i>
43° 23'.36 S 147° 01'.98 E	
43° 23'.28 S 147° 02'.05 E	

Chart temporarily affected - Aus 173

673(T)/2021 AUSTRALIA - TASMANIA - Maria Island - Scientific instruments
Marine and Safety Tasmania

Subsurface scientific instruments exist on the seabed in the following positions:

42° 40'.08 S 147° 58'.04 E
42° 39'.99 S 147° 58'.60 E
42° 39'.91 S 147° 59'.16 E
42° 39'.82 S 147° 59'.72 E
42° 39'.74 S 148° 00'.28 E
42° 39'.08 S 148° 10'.40 E
42° 39'.28 S 148° 10'.92 E
42° 39'.48 S 148° 11'.44 E
42° 39'.68 S 148° 11'.96 E
42° 39'.88 S 148° 12'.49 E
42° 40'.08 S 148° 13'.01 E
42° 40'.28 S 148° 13'.53 E
42° 40'.48 S 148° 14'.05 E
42° 40'.68 S 148° 14'.57 E
42° 40'.88 S 148° 15'.10 E
42° 41'.08 S 148° 15'.62 E
42° 41'.28 S 148° 16'.14 E
42° 41'.48 S 148° 16'.66 E
42° 41'.68 S 148° 17'.18 E
42° 41'.88 S 148° 17'.71 E
42° 42'.08 S 148° 18'.23 E
42° 42'.28 S 148° 18'.75 E
42° 42'.48 S 148° 19'.27 E
42° 42'.68 S 148° 19'.79 E
42° 42'.87 S 148° 20'.32 E
42° 43'.07 S 148° 20'.84 E
42° 43'.26 S 148° 21'.26 E.

Chart temporarily affected - Aus 766 - Aus 797

677(T)/2021 AUSTRALIA - TASMANIA - North West Bay - Mooring area
Marine and Safety Tasmania Notice M106/2021

A mooring area, marked by special light buoys, exists in an area bounded by the following positions:

43° 02'.75 S 147° 17'.91 E
43° 02'.66 S 147° 18'.04 E
43° 02'.74 S 147° 18'.15 E
43° 02'.82 S 147° 18'.00 E.

Mariners are advised to navigate with caution in the area.

Chart temporarily affected - Aus 171

722(T)/2021 AUSTRALIA - TASMANIA - Port Dalrymple - Bell Bay - Harbour works
Marine and Safety Tasmania Notice M207/2021

Remediation works are in progress at Bell Bay Berth 6 (41° 08'.39 S 146° 51'.14 E).

Mariners are advised to navigate with caution in the area.

Chart temporarily affected - Aus 167

916(T)/2022 AUSTRALIA - TASMANIA - Devonport - Virtual AIS
Marine and Safety Tasmania Notice M373(T)/2022

A reduced width of the channel is marked by virtual AIS as follows:

<i>Position</i>	<i>Remarks</i>
41° 10'.43 S 146° 21'.85 E	starboard lateral AIS
41° 10'.45 S 146° 21'.93 E	port lateral AIS
41° 10'.45 S 146° 21'.84 E	starboard lateral AIS
41° 10'.50 S 146° 21'.82 E	starboard lateral AIS
41° 10'.51 S 146° 21'.91 E	port lateral AIS
41° 10'.57 S 146° 21'.89 E	port lateral AIS.

Chart temporarily affected - Aus 164

83(T)/2023 AUSTRALIA - TASMANIA - Devonport - Harbour works
Marine and Safety Tasmania Notice M10(T)/2023

Demolition works are in progress in the vicinity of berth 3E in an area bounded by the coast and the following positions:

41° 11'.30 S 146° 22'.14 E
41° 11'.32 S 146° 22'.09 E
41° 11'.15 S 146° 21'.97 E
41° 11'.11 S 146° 21'.97 E
41° 11'.07 S 146° 21'.99 E
41° 10'.94 S 146° 21'.98 E
41° 10'.94 S 146° 22'.00 E.

Vessels will display appropriate lights and shapes and will monitor VHF Ch 14.

Mariners are advised not to enter the works area unless they are required to utilise the swing basin. These vessels must obtain approval from Devonport VTS prior to arrival and departure.

Chart temporarily affected - Aus 164

167(T)/2023 AUSTRALIA - TASMANIA - King Island - Grassy Harbour - Platform, submarine cable, prohibited area
Marine and Safety Tasmania Notice M19/2021

A lit platform, *F*, exists in position 40° 03'.97 S 144° 03'.53 E.

A submarine power cable exists between positions 40° 03'.97 S 144° 03'.53 E and 40° 03'.91 S 144° 03'.53 E.

An entry prohibited area, with radius 125m, exists centred on position 40° 03'.97 S 144° 03'.53 E.

Mariners are advised to navigate with caution in the area.

Chart temporarily affected - Aus 179

375(T)/2023 AUSTRALIA - TASMANIA - Devonport - Mersey River - Berth
Marine and Safety Tasmania Notice M175/2023

Three piles exist in the vicinity of position 41° 11'.44 S 146° 22'.01 E for the temporary berth, Devonport Berth 6 West.

Chart temporarily affected - Aus 164

639(T)/2023 AUSTRALIA - TASMANIA - River Derwent - Flowerpot Point - Kelp longlines; light buoys
Former Notice - 513(T)/2023 is cancelled
Marine and Safety Tasmania Notice M214(T)/2023, M266(T)/2023

Subsurface kelp longlines exist in an area, marked by light buoys, bounded by the following positions:

43° 01'.24 S 147° 20'.24 E
43° 01'.24 S 147° 20'.31 E
43° 01'.04 S 147° 20'.31 E
43° 01'.04 S 147° 20'.24 E.

Vessels not directly involved in the research activities are prohibited from entering the area.

Mariners are advised to navigate with caution in the area.

Chart temporarily affected - Aus 171 - Aus 173

876(T)/2023 AUSTRALIA - TASMANIA - Macquarie Harbour - Scientific instruments
Marine and Safety Tasmania Notice M338(T)/2023

Scientific instruments, 10m below the surface, exist in positions 42° 18'.49 S 145° 23'.01 E and 42° 20'.80 S 145° 25'.22 E.

Chart temporarily affected - Aus 177 - Aus 792

85(T)/2024 AUSTRALIA - TASMANIA - Macquarie Harbour - Lit barge
Marine and Safety Tasmania Notice M10/2024

The barge *Wombat* which is marked by a light, *F*, exists in position 42° 17'.55 S 145° 22'.18 E.

Mariners are advised to navigate with caution in the area.

Chart temporarily affected - Aus 177

133(T)/2024 AUSTRALIA - TASMANIA - Macquarie Harbour - Scientific instrument
Marine and Safety Tasmania Notice M36/2024

A scientific instrument, 10m below the surface, exists in position 42° 22'.79 S 145° 28'.84 E.

Chart temporarily affected - Aus 177 - Aus 792

134(T)/2024 AUSTRALIA - TASMANIA - Macquarie Harbour - Scientific instruments
Marine and Safety Tasmania Notice M37/2024

Scientific instruments marked by special buoys exist in the following positions:

42° 16'.92 S 145° 17'.62 E
42° 17'.06 S 145° 19'.03 E
42° 17'.16 S 145° 16'.00 E
42° 19'.38 S 145° 19'.27 E
42° 21'.72 S 145° 32'.22 E
42° 22'.08 S 145° 24'.46 E
42° 24'.24 S 145° 27'.62 E
42° 26'.04 S 145° 26'.91 E.

Chart temporarily affected - Aus 177 - Aus 792

343(T)/2024 AUSTRALIA - TASMANIA - Franklin Sound - Lady Barron - Wreck
Marine and Safety Tasmania Notice M159(T)/2024

A wreck marked by an isolated danger light buoy, *Q(2)5s*, exists in position 40° 12'.85 S 148° 14'.74 E.

Chart temporarily affected - Aus 179

69(T)/2025 AUSTRALIA - TASMANIA - Macquarie Harbour - Table Head - Scientific instrument
Marine and Safety Tasmania Notice M430(T)/2024

A scientific instrument marked by a special buoy exists in position 42° 16'.86 S 145° 16'.84 E.

Mariners are advised to navigate with caution in the area.

Chart temporarily affected - Aus 177

113(T)/2025 AUSTRALIA - TASMANIA - River Derwent - Limekiln Point - Light beacon destroyed
Former Notice - 74(T)/2025 is cancelled
Marine and Safety Tasmania Notice M028(T)/2025

The starboard lateral light beacon, *Fl.G.2s* (42° 50'.80 S 147° 20'.22 E), has been destroyed, a starboard lateral light buoy, *Fl.G.2s*, exist in situ.

Mariners are advised to navigate with caution in the area.

Chart temporarily affected - Aus 171 - Aus 796

424(T)/2025 AUSTRALIA - TASMANIA - Burnie - Aquaculture trial and research area northwards
Former Notice - 384(T)/2024 is cancelled
Marine and Safety Tasmania Notice M208(T)/2025, M209(T)/2025

An aquaculture trial and research area marked by special light buoy, *Fl.Y.3s*, exists in an area bounded by the following positions:

40° 56'.68 S 145° 56'.03 E

40° 56'.39 S 145° 56'.59 E
40° 55'.90 S 145° 56'.15 E
40° 56'.18 S 145° 55'.59 E.

All vessels not directly involved in activities with the research project are prohibited from entering the area.

Chart temporarily affected - Aus 163

520(T)/2025 AUSTRALIA - TASMANIA - Devonport - Mersey River - Light beacon destroyed

Marine and Safety Tasmania Notice M228/2025

The port lateral light beacon, *Fl.R.4s* (41° 11'.13 S 146° 21'.97 E), has been destroyed, a special light buoy, *Q.Y.*, exist in situ.

Mariners are advised to navigate with caution in the area.

Chart temporarily affected - Aus 164

685(T)/2025 AUSTRALIA - TASMANIA - Port Dalrymple - Barrel Rock - Beacon destroyed

Marine and Safety Tasmania Notice M256(T)/2025

The port lateral beacon (41° 03'.99 S 146° 47'.48 E) has been destroyed; a special buoy exists in situ.

Mariners are advised to navigate with caution in the area.

Chart temporarily affected - Aus 167

687(T)/2025 AUSTRALIA - TASMANIA - Spring Bay - Paddys Point to Alginat Bay - Pipe laying operations

Marine and Safety Tasmania Notice M261(T)/2025

Works are in progress to install a pipeline between Paddys Point (42° 32'.31 S 147° 55'.51 E) and Alginat Bay (42° 32'.50 S 147° 54'.85 E).

Mariners are advised to navigate with caution in the area.

Chart temporarily affected - Aus 797

724(T)/2025 AUSTRALIA - TASMANIA - Ansons Bay - Beacon destroyed

Marine and Safety Tasmania Notice M264(T)/2025

The beacon (41° 03'.75 S 148° 17'.91 E) has been destroyed.

Mariners are advised to navigate with caution in the area.

Chart temporarily affected - Aus 767

1009(T)/2025 AUSTRALIA - TASMANIA - Low Head - Obstruction northwestwards

Marine and Safety Tasmania Notice M348(T)/2025

A lost anchor chain exists in the vicinity of position 40° 57'.05 S 146° 44'.77 E.

Mariners are advised to navigate with caution and to avoid anchoring or trawling in the area.

Chart temporarily affected - Aus 487

1010(T)/2025 AUSTRALIA - TASMANIA - Moorland Point to Claytons Bay - Scientific instruments northwards

Marine and Safety Tasmania Notice M338(T)/2025

Special light buoys, *Q.Y.*, exist in the following positions:

41° 03'.95 S 146° 20'.36 E
41° 06'.55 S 146° 26'.29 E
41° 09'.10 S 146° 13'.68 E
41° 09'.68 S 146° 23'.66 E
41° 09'.83 S 146° 22'.64 E.

Mariners are advised not to moor on the light buoys and to navigate with caution in the area.

Chart temporarily affected - Aus 164

1011(T)/2025 AUSTRALIA - TASMANIA - River Derwent - Tasman Bridge - Harbour works
Marine and Safety Tasmania Notice M352(T)/2025

Maintenance works on the western side of the bridge (42° 51'.91 S 147° 20'.45 E) are in progress.

A gantry will be installed under the bridge, resulting in reduced clearance.

Mariners are advised to navigate with caution in the area.

Chart temporarily affected - Aus 171

1058(T)/2025 AUSTRALIA - TASMANIA - Mercury Passage - Scientific instrument
Former Notice - 111(T)/2025 is cancelled
Marine and Safety Tasmania Notice M360(T)/2025

A special light buoy, *Fl. Y. 3s*, exists in position 42° 31'.83 S 148° 01'.69 E.

Chart temporarily affected - Aus 766 - Aus 797

1092(T)/2025 AUSTRALIA - TASMANIA - Macquarie Harbour - Scientific instruments
Marine and Safety Tasmania Notice M362/2025

111 subsurface receiver buoys, 4m below the surface, will be deployed throughout Macquarie Harbour.

Individual locations of each buoy can be found in AHO ENC products.

Mariners should navigate with caution and avoid anchoring or trawling in the vicinity.

Chart temporarily affected - Aus 177

80(T)/2026 AUSTRALIA - TASMANIA - River Derwent - Storm Bay - Frederick Henry Bay - Sea trials
MAST M015/2026

INCAT vessel *China Zorrilla* will be conducting sea trials in the Storm Bay, Frederick Henry Bay and River Derwent areas. A 300 meter clearance is requested at all times, due to speed and possible sudden deviations of course, along with high volumes of water movement from the vessels jet propulsion.

Mariners are advised to navigate with caution in the vicinity of the craft.

Chart temporarily affected - Aus 171 - Aus 173 - Aus 795 - Aus 796

311(T)/2026 AUSTRALIA - TASMANIA - Great Oyster Bay - Fish aggregating device removed
Marine and Safety Tasmania Notice M106(T)/2026

The special light buoy, *Fl. Y. 3s FAD* (42° 10'.40 S 148° 10'.72 E), has been temporarily removed.

Chart temporarily affected - Aus 766

312(T)/2026 AUSTRALIA - TASMANIA - River Derwent - Punchs Reef - Light buoy unlit
Marine and Safety Tasmania Notice M109(T)/2026

The special light buoy, *Q. Y BYC2* (42° 53'.90 S 147° 22'.85 E), is unlit.

Chart temporarily affected - Aus 171

PAPUA NEW GUINEA and SOUTH PACIFIC

789(T)/2018 PAPUA NEW GUINEA - Bismarck Sea - Fish aggregating devices

National Maritime Safety Authority PNG Warning 9/2018

17 fish aggregating devices exist in an area bounded by the following positions:

4° 30'.0 S 149° 55'.0 E

4° 40'.0 S 149° 55'.0 E

4° 40'.0 S 150° 45'.0 E

4° 30'.0 S 150° 45'.0 E.

Mariners are advised to navigate with caution.

Chart temporarily affected - Aus 4622 (INT 622)

286(P)/2019 PAPUA NEW GUINEA - Madang Harbour - Shoaling

LADS Flight

Latest survey shows shoaler depths than those charted may exist in an area bounded by the following positions:

05° 04'.51 S 145° 48'.06 E

05° 11'.75 S 145° 47'.82 E

05° 11'.91 S 145° 49'.61 E

05° 10'.14 S 145° 50'.36 E

05° 04'.14 S 145° 48'.99 E.

Mariners are advised to navigate with caution in the area.

Charts will be updated in due course.

Chart which will be affected - PNG 646

346(T)/2019 PAPUA NEW GUINEA - Huon Gulf - Light buoy off station

National Maritime Safety Authority PNG Notice 9(T)/2017

The isolated danger light buoy, Q(2)5s (6° 48'.38 S 146° 58'.28 E), is off station.

Chart temporarily affected - PNG 643

1110(T)/2019 PAPUA NEW GUINEA - Oreore Channel - Light buoy off station

National Maritime Safety Authority PNG Coastal Navigation Warning 39/2019

The port lateral light buoy, Q.R (10° 13'.68 S 150° 52'.78 E), is off station.

Chart temporarily affected - PNG 628

668(T)/2020 PAPUA NEW GUINEA - Dauan Island - Light altered

HMAS *Mermaid*

The light, *Fl.R.6s* (9° 25'.38 S 142° 32'.07 E), has been temporarily altered to *F.R.*

Chart temporarily affected - Aus 841

826(P)/2020 PAPUA NEW GUINEA - Batumata Point - Shoaling

LADS Flight

Latest survey shows shoaler depths than those charted may exist in and around the islands and reefs in the area between Galovi (Howard) Reef (10° 11'.1 S 148° 08'.7 E) and Eunoro Island (10° 23'.6 S 149° 27'.3 E).

Mariners are advised to navigate with caution in the area.

Charts will be updated in due course.

Chart which will be affected - PNG 506 - PNG 507 - PNG 623

118(T)/2021 PAPUA NEW GUINEA - Madehas Island - Light unlit

National Maritime Safety Authority PNG

The light, *Fl.10s 137m 16M* (5° 27'.63 S 154° 38'.06 E), is unlit.

Chart temporarily affected - Aus 399 - Aus 4604 (INT 604) - Aus 4622 (INT 622) - PNG 397 - PNG 684

985(T)/2021 PAPUA NEW GUINEA - Saibai Island - Shoaling

Former Notice - 201(T)/2021 is cancelled

HMAS *Paluma* , HMAS *Mermaid*

Latest survey indicates shoaler depths than those charted exist in an area bounded by the following positions:

9° 20'.66 S 142° 36'.94 E

9° 20'.15 S 142° 39'.81 E

9° 17'.86 S 142° 48'.32 E

9° 21'.86 S 142° 47'.07 E

9° 21'.01 S 142° 40'.60 E

9° 21'.80 S 142° 37'.67 E

9° 22'.75 S 142° 37'.04 E

9° 22'.72 S 142° 35'.37 E

9° 22'.46 S 142° 34'.10 E

9° 21'.74 S 142° 34'.60 E.

Mariners are advised to navigate with caution in the area.

Charts will be updated in due course.

Chart temporarily affected - Aus 840 - Aus 841

327(T)/2022 PAPUA NEW GUINEA - Bonvouloir Islands - Aulelowa (Hastings) Island - Light unlit

National Maritime Safety Authority PNG Coastal Navigation Warning 8/2022

The light, *Fl(2)6s 8m 10M* (10° 20'.48 S 151° 52'.07 E), is unlit.

Chart temporarily affected - PNG 509 - PNG 512

785(T)/2022 PACIFIC OCEAN - Scientific instruments

UKHO

Grey pillar buoys exist in the following positions:

5° 02'.3 N 164° 49'.9 E

0° 00'.8 N 164° 59'.8 E

1° 59'.9 S 164° 58'.6 E

5° 01'.0 S 165° 10'.0 E

8° 02'.2 S 164° 46'.4 E.

Chart temporarily affected - Aus 4604 (INT 604)

794(T)/2022 PAPUA NEW GUINEA - Huon Gulf - Fish aggregating devices

National Maritime Safety Authority PNG Coastal Navigation Warning 8/2018

23 fish aggregating devices exist in an area bounded by the following positions:

7° 00'.0 S 147° 40'.0 E

7° 55'.0 S 147° 40'.0 E

7° 55'.0 S 148° 50'.0 E

7° 00'.0 S 148° 50'.0 E.

Mariners are advised to navigate with caution.

Chart temporarily affected - Aus 4622 (INT 622) - PNG 386 - PNG 521 - PNG 522 - PNG 523

829(T)/2022 PAPUA NEW GUINEA - Dekatuwe (Bright) Island - Light beacon unlit

Former Notice - 500(T)/2022 is cancelled

National Maritime Safety Authority PNG Notice 10/2022, 14/2022

The light beacon, *Fl.2-5s 16m 10M* (10° 31'.89 S 151° 12'.74 E), is unlit.

Chart temporarily affected - PNG 509

830(T)/2022 PAPUA NEW GUINEA - Kanaweya (Shortland) Reefs to Nuakata Passage - Light beacons unlit
National Maritime Safety Authority PNG Notice 15/2022, 16/2022

The light beacons, *Fl(3)12s 11m 10M* (10° 30'.70 S 151° 08'.13 E) and *Fl(2)10s 7m 6M* (10° 23'.60 S 151° 00'.77 E), are unlit.

Chart temporarily affected - PNG 508 - PNG 509 - PNG 628

831(T)/2022 PAPUA NEW GUINEA - Wadei Island - Light beacon unlit
National Maritime Safety Authority PNG Notice 17/2022

The starboard lateral light beacon, *Fl(2)G.8s 7m 3M* (2° 39'.45 S 150° 37'.68 E), is unlit.

Chart temporarily affected - PNG 543 - PNG 666

278(T)/2023 PAPUA NEW GUINEA - Boli Point - Trobriand Islands - Light unlit
National Maritime Safety Authority PNG

The light, *Fl.G.5s* (08° 33'.77 S 151° 01'.10 E) is unlit.

Chart temporarily affected - PNG 516 - PNG 637

279(T)/2023 PAPUA NEW GUINEA - Bomatu Point - Trobriand Islands - Light unlit
National Maritime Safety Authority PNG

The light, *Fl(3)15s 31m 10M* (08° 24'.09 S 151° 07'.20 E) is unlit.

Chart temporarily affected - PNG 516 - PNG 637

282(T)/2023 PAPUA NEW GUINEA - Galagalohi (Gallows) Reef - Goschen Strait - Light unlit
National Maritime Safety Authority PNG

The light, *Fl.5s 7m 10M* (10° 15'.44 S 151° 10'.39 E), is unlit.

Chart temporarily affected - PNG 509 - PNG 513

283(T)/2023 PAPUA NEW GUINEA - Kitava Island - Trobriand Islands - Light unlit
National Maritime Safety Authority PNG

The light, *Q* (08° 37'.70 S 151° 18'.34 E) is unlit.

Chart temporarily affected - PNG 515 - PNG 516 - PNG 637

285(T)/2023 PAPUA NEW GUINEA - Tamiaris Reef - Laughlan Islands - Light unlit
National Maritime Safety Authority PNG

The light, *Fl(2)8s* (09° 16'.84 S 153° 39'.38 E), is unlit.

Chart temporarily affected - PNG 514

974(T)/2023 PAPUA NEW GUINEA - Buka Passage - Light beacon unlit
National Maritime Safety Authority PNG Coastal Navigation Warning 23/2023

The light beacon, *Fl.2-5s 7m 10M* (5° 24'.39 S 154° 42'.69 E), is unlit.

Chart temporarily affected - Aus 399 - Aus 4622 (INT 622) - PNG 397 - PNG 684

289(T)/2024 PAPUA NEW GUINEA - Queen Carola Harbour - Light beacon unlit

National Maritime Safety Authority PNG Coastal Navigation Warning 7/2024

The light beacon, *Fl.R.6s* (5° 08'.18 S 154° 32'.92 E), is unlit.

Chart temporarily affected - PNG 684

290(T)/2024 PAPUA NEW GUINEA - Redscar Head - Light unlit

National Maritime Safety Authority PNG Coastal Navigation Warning 5/2024

The light, *Fl.10s 77m 10M* (9° 15'.91 S 146° 54'.03 E), is unlit.

Chart temporarily affected - PNG 379 - PNG 647

746(P)/2024 PAPUA NEW GUINEA - Rabaul - Coastline

Australian Hydrographic Office

The coastline between Karavia Bay (4° 16'.84 S 152° 09'.83 E) and Nodup (4° 11'.66 S 152° 12'.32 E) may differ to what is currently charted.

Mariners are advised to navigate with caution in the area.

Charts will updated in due course.

Chart which will be affected - PNG 545 - PNG 554 - PNG 680

445(T)/2025 PAPUA NEW GUINEA - Kitumala (Fortification) Point - Light unlit

National Maritime Safety Authority PNG Coastal Navigation Warning 4/2025

The light, *Fl(2)8s 27m 8M* (6° 19'.16 S 147° 48'.35 E), is unlit.

Chart temporarily affected - Aus 4622 (INT 622) - PNG 386 - PNG 387

832(T)/2025 PAPUA NEW GUINEA - Loa Islet - Light unlit

National Maritime Safety Authority PNG Coastal Navigation Warning 19/2025

The light, *Fl.8s 43m 10M* (11° 26'.96 S 154° 23'.90 E), is unlit.

Chart temporarily affected - Aus 4060 (INT 60) - Aus 4604 (INT 604) - PNG 511

911(T)/2025 PAPUA NEW GUINEA - Dawapia (The Beehives) - light beacon unlit

National Maritime Safety Authority

The light beacon, *Fl(2)R.6s4M* (04° 14'.2 S 152° 10'.1 E), is unlit.

Chart temporarily affected - PNG 545 - PNG 554 - PNG 680

912(T)/2025 PAPUA NEW GUINEA - Ward Hunt Strait - Ipoteto Island - Light unlit

National Maritime Safety Authority PNG

The light, *Fl(2)8s 23m 10M* (9° 37'.78 S 150° 01'.36 E), is unlit.

Chart temporarily affected - Aus 4060 (INT 60) - Aus 4604 (INT 604) - PNG 518 - PNG 519

947(T)/2025 PAPUA NEW GUINEA - Malendok Island - Light beacon unlit

National Maritime Safety Authority PNG Coastal Navigation Warning 24/2025

The west cardinal light beacon, *Q(9)15s* (3° 27'.25 S 153° 10'.42 E), is unlit.

Chart temporarily affected - PNG 539

251(T)/2026 PAPUA NEW GUINEA - Cape Gerhards - Light unlit

National Maritime Safety Authority PNG Coastal Navigation Warning 2/2026

The light, *Fl(3)12s 22m 10M* (6° 44'.70 S 147° 34'.56 E), is unlit.

Chart temporarily affected - Aus 4622 (INT 622) - PNG 523

252(T)/2026 PAPUA NEW GUINEA - Caution Bay - Light buoy off station

National Maritime Safety Authority PNG Coastal Navigation Warning 1/2026

The east cardinal light buoy, *Q(3)10s TB1* (9° 20'.44 S 146° 58'.59 E), is off station.

Chart temporarily affected - PNG 647 - PNG 648

EAST TIMOR

NIL

MISCELLANEOUS

678(T)/2017 SOLOMON ISLANDS - Lungga Point - Light beacon unlit Australian Hydrographic Service

The light beacon, *Fl(3)20s 10m 5M* (9° 24'.26 S 160° 01'.66 E), is unlit.

Chart temporarily affected - SLB 101 - SLB 201

91(P)/2018 SOLOMON ISLANDS - Ghizo Island - Shoaling Secretariat of the Pacific Community

Latest survey shows shoaler depths than those charted may exist in and around the islands and reefs in the area between Naru Island (8° 08'.3 S 156° 55'.1 E) and Sepo Island (8° 03'.2 S 156° 49.5 E).

Mariners are advised to navigate with caution in the area.

Charts will be updated in due course.

Chart which will be affected - SLB 102 - SLB 301 - SLB 302

987(T)/2018 TIMOR-LESTE - Dili - Light unlit HMAS *Paluma*

The light, *Fl.R.4s* (8° 33'.20 S 125° 34'.70 E), is unlit.

Chart temporarily affected - Aus 901

406(P)/2020 SOLOMON ISLANDS - Port Noro to Kuri Point - Shoaling *Former Notice - 184(P)/2020 is cancelled* Australian Hydrographic Office , HMAS *Leeuwin*

Latest survey shows shoaler depths than those charted may exist in areas bounded by the following positions:

8° 15'.07 S 157° 11'.77 E
8° 15'.43 S 157° 11'.52 E
8° 15'.78 S 157° 11'.47 E
8° 15'.78 S 157° 12'.00 E
8° 15'.07 S 157° 11'.89 E;
and
8° 19'.68 S 157° 11'.83 E
8° 21'.27 S 157° 12'.62 E
8° 21'.09 S 157° 13'.14 E
8° 19'.05 S 157° 12'.30 E
8° 19'.17 S 157° 11'.76 E.

Mariners are advised to navigate with caution in the area.

Charts will be updated in due course.

Chart which will be affected - SLB 102

80(P)/2022 SOUTHERN OCEAN - Antarctica - Mawson - Shoaling Australian Antarctic Division

Latest survey indicates shoaling in the approach to Mawson in the following locations

67° 25'.00 S 062° 46'.20 E
67° 29'.58 S 062° 52'.92 E
67° 30'.08 S 062° 50'.45 E
67° 30'.70 S 062° 53'.35 E
67° 30'.45 S 062° 51'.56 E
67° 35'.00 S 062° 52'.25 E

Mariners are advised to navigate with caution in the area.

Charts will be updated in due course.

Chart which will be affected - Aus 600 (INT 9036)

228(T)/2024 SOUTHERN OCEAN - Macquarie Island - Scientific instrument southwestwards
CSIRO

A subsurface scientific instrument, 90m below the surface, exists in the position 55° 47'.62 S 152° 43'.56 E.

Chart temporarily affected - Aus 4074 (INT 74)

387(T)/2024 SOLOMON ISLANDS - Maru Sound - Nort East Entrance - Light buoys off station
Solomon Islands Maritime Authority

The port lateral light buoy, *Fl.R.3s* (9° 46'.81 S 160° 51'.08 E), and the starboard lateral light buoy, *Fl.G.3s* (9° 46'.54 S 160° 50'.48 E), are off station.

Chart temporarily affected - SLB 101

506(T)/2024 SOLOMON ISLANDS - Lengo Channel - Taivu Point - Light beacon unlit
Solomon Islands Maritime Safety Administration

The light beacon, *LFl(2)20s 10m 5M* (9° 24'.54 S 160° 21'.02 E), is unlit.

Chart temporarily affected - SLB 201 - SLB 304

768(P)/2024 SOLOMON ISLANDS - Diamond Narrows to Munda Bar - Shoaling
Aero Asahi Corporation

Latest survey indicates shoaler depths than those charted may exist between Diamond Narrows (8° 15'.62 S 157° 11'.69 E) and Munda Bar (8° 20'.94 S 157° 12'.72 E).

Mariners are advised to navigate with caution in the area.

Charts will be updated in due course.

Chart which will be affected - SLB 102 - SLB 302

938(P)/2024 SOLOMON ISLANDS - Blakett Strait - Shoaling
Aero Asahi Corporation

Latest survey indicates shoaler depths than those charted may exist in Blakett Strait in an area between longitudes 157° 06'.68 E and 157° 09'.94 E.

Drying coral exists in position 8° 07'.94 S 157° 09'.74 E.

Mariners are advised to navigate with caution in the area.

Charts will be updated in due course.

Chart which will be affected - SLB 102

940(T)/2024 SOLOMON ISLANDS - Honiara - Kua Bay - Light buoy unlit
Solomon Islands Maritime Authority Notice 12/2024

The isolated danger light buoy, *Fl(2)10s* (9° 25'.89 S 159° 57'.76 E), is unlit.

Chart temporarily affected - SLB 101

631(P)/2025 SOUTHERN OCEAN - Shoaling
Department of Foreign Affairs and Trade

Latest survey indicates shoaler depths than those charted may exist as follows:

<i>Position</i>	<i>Depth</i>
-----------------	--------------

40° 31'.22 S 165° 46'.17 E 2922m
40° 33'.83 S 162° 09'.41 E 2738m
40° 54'.61 S 154° 09'.96 E 2343m
40° 53'.57 S 153° 14'.58 E 2476m
40° 24'.25 S 151° 36'.45 E 2423m
38° 59'.70 S 132° 31'.94 E 1621m
38° 53'.74 S 126° 37'.73 E 2729m
38° 50'.15 S 122° 35'.56 E 2485m
38° 47'.20 S 119° 25'.55 E 566m
38° 27'.28 S 116° 50'.88 E 630m
38° 44'.94 S 117° 00'.04 E 2855m.

Mariners are advised to navigate with caution in the area.

Charts will be updated in due course.

Chart which will be affected - Aus 4060 (INT 60) - Aus 4074 (INT 74) - Aus 4601 (INT 601) - Aus 4708 (INT 708) - Aus 4709 (INT 709) - Aus 4710 (INT 710)

892(T)/2025 SOLOMON ISLANDS - Honiara - Point Cruz - Light buoy removed

Solomon Islands Maritime Authority

The special light buoy, *Fl.Y.10s* (9° 25'.45 S 159° 57'.53 E), has been temporarily removed.

Chart temporarily affected - SLB 101

1093(T)/2025 NEW ZEALAND - Australia - Tasman Sea - Submarine cable removal

Mertech Marine

On or about the 16 December 2025, Mertech Marine will be conducting cable recovery of the Tasman 2 Cable between Auckland and Sydney between the following positions:

36° 50'.8 S 174° 08'.8 E
37° 00'.6 S 173° 00'.3 E
36° 46'.9 S 164° 32'.0 E
35° 56'.1 S 160° 21'.3 E
36° 04'.1 S 159° 48'.5 E
35° 30'.8 S 156° 07'.5 E
34° 53'.1 S 154° 23'.1 E.

Mariners are advised to navigate with caution in the area.

Chart temporarily affected - Aus 489 - Aus 4060 (INT 60) - Aus 4601 (INT 601) - Aus 4602 (INT 602)

83(T)/2026 SOLOMON ISLANDS - Nusatupe Island - Light beacon relit; topmark destroyed

Former Notice - 805(T)/2025 is cancelled

Solomon Islands Maritime Authority Notice 20/2025

The topmark on light beacon, *Fl(3)R.10s 11m 5M* (8° 05'.55 S 156° 51'.82 E), has been destroyed.

Chart temporarily affected - SLB 102 - SLB 301 - SLB 302

123(P)/2026 SOUTHERN OCEAN - Heard Island - Shoaling

Australian Antarctic Division

Latest survey indicates shoaler depths than those charted exist in an area bounded by the following positions:

53° 02'.19 S 73° 37'.27E
53° 01'.53 S 73° 38'.24E
53° 03'.13 S 73° 40'.89E
53° 03'.78 S 73° 40'.37E.

Mariners are advised to avoid navigating in the area.

Charts will be updated in due course.

Chart which will be affected - Aus 605

133(T)/2026 SOLOMON ISLANDS - Florida Islands - Nggela Sule - Tuituhi Point - Light beacon unlit
Solomon Islands Maritime Authority Notice 1(T)/2026

The light beacon, *Fl(3)20s 10m 10M* (9° 08'.57 S 160° 13'.74 E), is unlit.

Chart temporarily affected - SLB 201 - SLB 304

266(T)/2026 SOLOMON ISLANDS - Guadalcanal Island - Geotechnical and geophysical operations northwards
Solomon Islands Maritime Authority Notice 4/2026

Vessel *Ocean Surveyor* is conducting geotechnical and geophysical survey operations between the following positions:

9° 25'.61 S 160° 00'.00 E

8° 51'.91 S 159° 54'.43 E

8° 23'.47 S 160° 28'.68 E

7° 10'.30 S 159° 53'.15 E

5° 16'.84 S 160° 23'.89 E.

The vessel will monitor VHF Ch 13 and Ch 16.

Mariners are advised to navigate with caution in the area.

Chart temporarily affected - Aus 4604 (INT 604) - SLB 101 - SLB 201 - SLB 303 - SLB 304