



AUSTRALIAN NOTICES TO MARINERS

Notices 1059 - 1093



*The Hydrographer and Staff of the Australian Hydrographic Office
wish all users of Australian Navigational Products a Merry Christmas,
a Happy New Year and safe, successful voyages in 2026.*



Published fortnightly by the Australian Hydrographic Office



Australian Notices to Mariners are the authority for correcting charts and publications published by the Australian Hydrographic Office covering Australia, Papua New Guinea, Solomon Islands, Australian Antarctic Territory and Timor-Leste.

Commodore R.L. PHILLIPS RAN
Hydrographer of Australia

SECTIONS.

- I. **Australian Notices to Mariners, including blocks and notes.**
- II. **Hydrographic Reports.**

SUPPLEMENTS.

- I. **Tracings**
- II. **Cumulative List of Australian Notices to Mariners.**
- III. **Cumulative List of Temporary and Preliminary Australian Notices to Mariners.**
- IV. **Temporary and Preliminary Notices in force.**

© Commonwealth of Australia 2025

This work is copyright. Apart from any use permitted under the Copyright Act 1968, no part may be reproduced by any process, adapted, communicated or commercially exploited without prior written permission from The Commonwealth represented by the Australian Hydrographic Office.

IMPORTANT NOTICE

This edition of Notices to Mariners includes all navigationally significant information affecting AHO products which the AHO has become aware of since the last edition. All reasonable efforts have been made to ensure the accuracy and completeness of the information, including third party information, on which these updates are based. The AHO regards third parties from which it receives information as reliable, however the AHO cannot verify all such information and errors may therefore exist. The AHO does not accept liability for errors in third party information.

GENERAL INSTRUCTIONS

The substance of these notices should be inserted on the charts affected.

Bearings are referred to the true compass and are reckoned clockwise from North; those relating to lights are given as seen by an observer from seaward.

Positions quoted in notices relate to WGS84 which is the horizontal datum for all charts produced by the Australian Hydrographic Office.

The range quoted for a light is its nominal range.

Depths are with reference to the chart datum of each chart. Heights are above mean high water springs or mean higher high water, as appropriate.

The capital letter (P) or (T) after the number of any notice denotes a preliminary or temporary notice respectively, which are contained separately at the end of the permanent notices.

REPORTING OF DANGERS

Mariners are particularly requested to notify the AUSTRALIAN HYDROGRAPHIC OFFICE, Locked Bag 8801 Wollongong, NSW 2500 (e-mail datacentre@hydro.gov.au or, alternatively by filling in and submitting the [Hydrographic Notes](#) forms located on the web site – www.hydro.gov.au), immediately on the discovery of new dangers or suspected dangers to navigation. For changes or defects in aids to navigation notify AusSAR (Fax 02-6230 6868 or email rccaus@amsa.gov.au).

AUTHORISED USE

Copies of Australian notices are available free of charge from the Australian Hydrographic Office (AHO) website (www.hydro.gov.au) and through the eNotices (email) service (www.hydro.gov.au/enotices/enotices.htm).

Individual Notices may be copied for the purpose of inserting Notice substance on official charts and publications. Paper copies may be printed by chart agents and distributed to customers on a cost recovery basis. Participating chart agents are listed on the AHO website as providing a 'Paper Notices to Mariners' service (www.hydro.gov.au/prodserv/agents-list.htm). Copies of the notices may not be sold for profit without prior written agreement.

NUMERICAL INDEX OF NOTICES TO MARINERS

Edition No 25

Notices	Aus Chart, INT Chart, ENC Cell, AHP, BA Pubs
1059	Aus 50, 55, 73, 74
1060	Products - New Charts and New Editions to be published shortly
1061	Aus 198, 200
1062	Aus 821, 824, 825
1063	Aus 490, 816, 817, 818
1064	Aus 6
1065	Aus 367, 490, 611, 612, 613, 816, 821, 829, 830, 831, 832, 837
1066	PNG 647, 648
1067	Aus 305, 710
1068	Aus 26
1069	Aus 337
1070	Aus 112, 117, 335, 336, 343, 346, 485, 754, 780, 781, 4060, 4070, 4708, 4709, 4710, INT 60, 70, 708, 709, 710
1071	Aus 920
1072	Aus 346, 485, 4709, INT 709
1073	Aus 130
1074(T)	Aus 245, 246
1075(P)	Aus 821, 825
1076(T)	Aus 821, 824, 825
1077(T)	Aus 312
1078(T)	Aus 328
1079(T)	Aus 319
1080(T)	Aus 4723, INT 723
1081(T)	Aus 4723, INT 723
1082(T)	Aus 81
1083(T)	Aus 327
1084(T)	Aus 315, 318
1085(T)	Aus 357, 487
1086(T)	Aus 349
1087(T)	Aus 157
1088(T)	Aus 144
1089(T)	Aus 143, 157
1090(T)	Aus 143
1091(T)	Aus 177, 792
1092(T)	Aus 177
1093(T)	Aus 489, 4060, 4601, 4602, INT 60, 601, 602

NUMERICAL INDEX OF CHARTS AFFECTED

Edition No 25

Aus Chart	Notices
Aus 6	1064
Aus 26	1068
Aus 50	1059
Aus 55	1059
Aus 73	1059
Aus 74	1059
Aus 81	1082(T)
Aus 112	1070
Aus 117	1070
Aus 130	1073
Aus 143	1089(T) , 1090(T)
Aus 144	1088(T)
Aus 157	1087(T) , 1089(T)
Aus 177	1091(T) , 1092(T)
Aus 198	1061
Aus 200	1061
Aus 245	1074(T)
Aus 246	1074(T)
Aus 305	1067
Aus 312	1077(T)
Aus 315	1084(T)
Aus 318	1084(T)
Aus 319	1079(T)
Aus 327	1083(T)
Aus 328	1078(T)
Aus 335	1070
Aus 336	1070
Aus 337	1069
Aus 343	1070
Aus 346	1070 , 1072
Aus 349	1086(T)
Aus 357	1085(T)
Aus 367	1065
Aus 485	1070 , 1072
Aus 487	1085(T)
Aus 489	1093(T)
Aus 490	1063 , 1065
Aus 611	1065
Aus 612	1065
Aus 613	1065
Aus 710	1067
Aus 754	1070
Aus 780	1070
Aus 781	1070
Aus 792	1091(T)
Aus 816	1063 , 1065
Aus 817	1063
Aus 818	1063
Aus 821	1062 , 1065 , 1075(P) , 1076(T)
Aus 824	1062 , 1076(T)
Aus 825	1062 , 1075(P) , 1076(T)
Aus 829	1065
Aus 830	1065
Aus 831	1065

Aus Chart	Notices
Aus 832	1065
Aus 837	1065
Aus 920	1071
Aus 4060	1070 , 1093(T)
Aus 4070	1070
Aus 4601	1093(T)
Aus 4602	1093(T)
Aus 4708	1070
Aus 4709	1070 , 1072
Aus 4710	1070
Aus 4723	1080(T) , 1081(T)
PNG 647	1066
PNG 648	1066

INT Chart	Notices
INT 60	1070 , 1093(T)
INT 70	1070
INT 601	1093(T)
INT 602	1093(T)
INT 708	1070
INT 709	1070 , 1072
INT 710	1070
INT 723	1080(T) , 1081(T)

1059 AUSTRALIA - Products - New Charts, New Editions, Withdrawn Charts

Australian Hydrographic Office

New Charts

Chart	Title and Geographical limits	Scale	Publication Date	Remarks
NIL				

New Electronic Navigation Chart (Aus ENC)

Cell Name	Title	Publication Date	Remarks
AU5SKA01	Australia - Queensland - Gulf of Carpentaria - Skardon River	11/12/2025	

New Editions and Withdrawn Charts

Chart	Title	Scale	Publication Date	Remarks
Aus 50 (Edition 4)	Australia - North West Coast - Western Australia - Approaches to Broome	1:50 000	12/12/2025	New edition with general updating throughout; including latest bathymetric data. Chart Aus 50 Edition 3 dated 3 September 2021 is now superseded and must be withdrawn from use.
Aus 55 (Edition 3)	Australia - North West Coast - Western Australia - Approaches to Port Walcott	1:50 000	12/12/2025	New edition with general updating throughout; including latest bathymetric data. Chart Aus 55 Edition 2 dated 2 October 2020 is now superseded and must be withdrawn from use.
Aus 73 (Edition 2)	Australia - North West Coast - Plans in Western Australia (Sheet 4) Plans: Cape Cuvier Carnarvon	1:10 000 1:12 500	12/12/2025	New edition with general updating throughout; including latest bathymetric data. Chart Aus 73 Edition 1 dated 7 November 2008 is now superseded and must be withdrawn from use.
Aus 74 (Edition 2)	Australia - West Coast - Western Australia - Approaches to Useless Loop Plan: Slope Island	1:50 000 1:7 500	12/12/2025	New edition with general updating throughout; including latest bathymetric data. Chart Aus 74 Edition 1 dated 30 January 2009 is now superseded and must be withdrawn from use.

Chart permanently withdrawn

Charts listed above as withdrawn no longer meet chart carriage requirements and should be marked as "superseded" and replaced with the new chart/ new edition listed prior to passage through the area covered by the new chart.

When placing orders with a chart agent between notice of forthcoming edition and its publication, mariners should advise whether their order pertains to the current edition or the new edition.

For further details refer to the AHO website at www.hydro.gov.au for new edition and new chart stock arrival information.

1059 AUSTRALIA - Products - New Charts, New Editions, Withdrawn Charts
1060 AUSTRALIA - Products - New Charts and New Editions to be published shortly
 Australian Hydrographic Office

New Charts to be published shortly

<i>Chart</i>	<i>Title</i>	<i>Scale</i>	<i>Remarks</i>
NIL			

New Editions to be published shortly

<i>Chart</i>	<i>Title</i>	<i>Scale</i>	<i>Remarks</i>
NIL			

1061 AUSTRALIA - NEW SOUTH WALES - Botany Bay to Port Jackson - Fairway; radio reporting point
 Port Authority of New South Wales

Note: position of existing chart notes may vary on certain charts.

Aus 198 [967/2025]

Replace	chart note, FAIRWAY AREAS C AND D, with accompanying chart note, FAIRWAY AREAS C AND D	33° 57'.0 S	151° 04'.5 E
Delete	magenta arrow, centred on	34° 00'.61 S	151° 15'.63 E
	magenta arrow, centred on	34° 01'.25 S	151° 17'.65 E
	magenta arrow, centred on	34° 01'.81 S	151° 15'.31 E
	magenta arrow, centred on	34° 02'.84 S	151° 15'.97 E

Aus 200 [934/2025]

Replace	inbound radio reporting point with two-way radio reporting point	33° 49'.69 S	151° 17'.86 E
	outbound radio reporting point with two-way radio reporting point	33° 49'.97 S	151° 17'.73 E
	chart note, FAIRWAY AREAS A AND B, with accompanying chart note, FAIRWAY AREAS A AND B	33° 53'.6 S	151° 09'.0 E
Delete	magenta arrow, centred on	33° 49'.57 S	151° 17'.48 E
	magenta arrow, centred on	33° 49'.85 S	151° 17'.32 E
	magenta arrow, centred on	33° 50'.30 S	151° 20'.98 E
	magenta arrow, centred on	33° 51'.50 S	151° 20'.47 E

1062 AUSTRALIA - QUEENSLAND - Edgell Reefs to Tideway Reef - Depths
Australian Hydrographic Office

Aus 821 [126/2025]

Insert	10m contour, between	20° 09'.91 S	149° 53'.08 E
		20° 10'.02 S	149° 53'.65 E
		20° 09'.96 S	149° 53'.73 E
		20° 09'.18 S	149° 53'.66 E
		20° 09'.12 S	149° 53'.58 E
		20° 09'.13 S	149° 53'.48 E
		20° 09'.78 S	149° 53'.03 E
		20° 09'.91 S	149° 53'.08 E
	depth, 8 ₃ m, enclosed by contour	19° 59'.80 S	149° 42'.50 E
	depth, 3 ₂ m, enclosed by contour with legend, <i>R</i>	20° 02'.72 S	149° 56'.79 E
	depth, 4 ₄ m, enclosed by contour with legend, <i>R</i>	20° 05'.75 S	149° 56'.67 E
	depth, 9 ₆ m, enclosed by contour with legend, <i>R</i>	20° 09'.29 S	149° 52'.41 E
	depth, 6 ₉ m	20° 09'.78 S	149° 53'.16 E
Delete	depth, 14m	20° 05'.9 S	149° 56'.8 E
	depth, 24m	20° 09'.8 S	149° 53'.0 E

Aus 824 [286/2025]

Insert	accompanying block A	20° 11'.5 S	149° 45'.5 E
	accompanying block B	20° 11'.5 S	149° 59'.0 E
	accompanying ZOC diagram	21° 02'.0 S	148° 55'.0 E

Aus 825 [729/2025]

Insert	depth, 8 ₃ m, enclosed by contour	19° 59'.80 S	149° 42'.50 E
--------	--	--------------	---------------

1063 AUSTRALIA - QUEENSLAND - K'gari - Sandy Cape - Light
Australian Maritime Safety Authority Final ATH 13/2025

Aus 490 [527/2025]

Amend	light to <i>Fl. 13s 20M</i>	24° 43'.8 S	153° 12'.5 E
-------	-----------------------------	-------------	--------------

Aus 816 [949/2024]

Amend	light to <i>Fl. 13s 128m 20M</i>	24° 43'.8 S	153° 12'.5 E
-------	----------------------------------	-------------	--------------

Aus 817 [773/2025]

Amend	light to <i>Fl. 13s 128m 20M</i>	24° 43'.8 S	153° 12'.5 E
-------	----------------------------------	-------------	--------------

Aus 818 [7/2025]

Amend	light to <i>Fl. 13s 128m 20M</i>	24° 43'.8 S	153° 12'.5 E
-------	----------------------------------	-------------	--------------

1064 AUSTRALIA - QUEENSLAND - Karumba - Infrastructure; light
Maritime Safety Queensland Notice 479/2025

Aus 6 [532/2025]

Insert	accompanying block	17° 28'.8 S	140° 49'.4 E
--------	------------------------------------	-------------	--------------

1065 AUSTRALIA - QUEENSLAND - Round Hill Head to Barrow Point - ESSA eastwards

Australian Hydrographic Office

Note: position of existing chart notes may vary on certain charts.**Aus 367** [430/2025]

Insert	legend, <i>ESSA (see Note)</i> , centred on	20° 49'.99 S	152° 38'.12 E
	legend, <i>ESSA (see Note)</i> , centred on	21° 12'.01 S	152° 59'.07 E
	accompanying chart note, ENVIRONMENTALLY SENSITIVE SEA AREA (ESSA)	21° 41'.0 S	152° 45'.0 E

Aus 490 [1063/2025]

Insert	legend, <i>ESSA (see Note)</i> , centred on	20° 13'.55 S	151° 35'.25 E
	legend, <i>ESSA (see Note)</i> , centred on	20° 51'.32 S	152° 41'.16 E
	legend, <i>ESSA (see Note)</i> , centred on	21° 54'.60 S	153° 12'.17 E
	accompanying chart note, ENVIRONMENTALLY SENSITIVE SEA AREA (ESSA)	23° 32'.0 S	150° 42'.5 E
	legend, <i>ESSA (see Note)</i> , centred on	23° 56'.81 S	153° 50'.21 E

Aus 611 (Mellish Reef) [NE 28/5/2021]

Insert	accompanying chart note, ENVIRONMENTALLY SENSITIVE SEA AREA (ESSA) , in N border	17° 19'.1 S	155° 53'.0 E
--------	--	-------------	--------------

Aus 612 (Saumarez Reefs) [533/2025]

Insert	accompanying chart note, ENVIRONMENTALLY SENSITIVE SEA AREA (ESSA) , in N border	21° 37'.1 S	153° 54'.5 E
--------	--	-------------	--------------

Aus 613 [809/2005]

Insert	accompanying chart note, ENVIRONMENTALLY SENSITIVE SEA AREA (ESSA)	18° 53'.0 S	152° 30'.0 E
--------	--	-------------	--------------

Aus 816 [1063/2025]

Insert	ESSA limit, between	24° 29'.90 S	154° 00'.06 E
		24° 29'.90 S	154° 02'.80 E
	legend, <i>ESSA (see Note)</i> , centred on	24° 21'.86 S	153° 57'.78 E
	accompanying chart note, ENVIRONMENTALLY SENSITIVE SEA AREA (ESSA)	25° 06'.8 S	153° 15'.7 E

Aus 821 [1062/2025]

Insert	legend, <i>ESSA (see Note)</i> , centred on	19° 36'.64 S	150° 30'.57 E
	accompanying chart note, ENVIRONMENTALLY SENSITIVE SEA AREA (ESSA)	20° 24'.5 S	149° 37'.7 E

Aus 829 [969/2025]

Insert	legend, <i>ESSA (see Note)</i> , centred on	17° 18'.08 S	146° 55'.59 E
	legend, <i>ESSA (see Note)</i> , centred on	17° 35'.97 S	147° 10'.38 E
	accompanying chart note, ENVIRONMENTALLY SENSITIVE SEA AREA (ESSA)	17° 53'.6 S	145° 53'.4 E

Aus 830 [861/2025]

Insert	legend, <i>ESSA (see Note)</i> , centred on	16° 40'.04 S	146° 40'.15 E
	accompanying chart note, ENVIRONMENTALLY SENSITIVE SEA AREA (ESSA)	16° 55'.3 S	145° 34'.8 E
	legend, <i>ESSA (see Note)</i> , centred on	17° 09'.48 S	146° 52'.10 E

Aus 831 [734/2025]

Insert	legend, <i>ESSA (see Note)</i> , centred on	15° 06'.49 S	146° 02'.98 E
	accompanying chart note, ENVIRONMENTALLY SENSITIVE SEA AREA (ESSA)	15° 54'.0 S	145° 12'.5 E

Aus 832 [861/2025]

Insert	legend, <i>ESSA (see Note)</i> , centred on	14° 26'.20 S	145° 43'.40 E
	legend, <i>ESSA (see Note)</i> , centred on	15° 04'.87 S	146° 02'.35 E
	accompanying chart note, ENVIRONMENTALLY SENSITIVE SEA AREA (ESSA)	15° 12'.0 S	144° 36'.5 E

Aus 837 [1016/2025]

Insert	ESSA limit, between	10° 36'.05 S	144° 00'.00 E
		10° 41'.19 S	144° 00'.00 E

1065 AUSTRALIA - QUEENSLAND - Round Hill Head to Barrow Point - ESSA eastwards			
legend, ESSA (see Note), centred on		10° 38'.56 S	144° 00'.28 E
accompanying chart note, ENVIRONMENTALLY SENSITIVE SEA AREA (ESSA)		11° 00'.5 S	144° 06'.5 E
1066 PAPUA NEW GUINEA - Caution Bay - Nav aids; obstruction			
Former Notice - 946(T)/2025 is cancelled			
National Maritime Safety Authority PNG Coastal Navigation Warning 28/2025, 29/2025			
PNG 647 [899/2025]			
Insert	accompanying block	9° 19'.3 S	146° 58'.8 E
PNG 648 [899/2025]			
Replace	light beacon with danger circle with legend, <i>Obstn</i> , centred on	9° 18'.05 S	146° 58'.21 E
	light beacon with danger circle with legend, <i>Obstn</i> , centred on	9° 18'.54 S	146° 59'.16 E
Delete	dashed and continuous line with legend, 341°, emanating from light beacon	9° 18'.05 S	146° 58'.21 E
1067 AUSTRALIA - NORTHERN TERRITORY - Bing Bong - Nav aids			
Former Notice - 751(T)/2025 is cancelled			
Nathan River			
Aus 305 [835/2021]			
Replace	depth, 9 ₁ m, with lit barrel mooring buoy, <i>Fl. Y.3s</i>	15° 28'.8 S	136° 30'.3 E
Aus 710 [835/2021]			
Insert	lit barrel mooring buoy, <i>Fl. Y.3s</i>	15° 28'.78 S	136° 30'.26 E
Delete	out of position lit mooring buoy	15° 21'.7 S	136° 33'.4 E
	light buoy	15° 21'.8 S	136° 34'.8 E
	depth, 9 ₁ m	15° 28'.8 S	136° 30'.4 E
1068 AUSTRALIA - NORTHERN TERRITORY - Darwin - Nav aids			
Darwin Port			
Aus 26 [1019/2025]			
Amend	light beacon to <i>WRG & Fl. Y.2s</i>	12° 29'.65 S	130° 53'.58 E
	legend to <i>Dir 055°</i>	12° 29'.94 S	130° 53'.12 E
1069 AUSTRALIA - WESTERN AUSTRALIA - Bremer Bay - Depths			
Australian Hydrographic Office			
Aus 337 [780/2025]			
Insert	contour, between	34° 23'.40 S	119° 25'.31 E
		34° 23'.10 S	119° 26'.30 E
		34° 22'.84 S	119° 27'.76 E
Replace	depth, 6m, with depth, 4 ₉ m	34° 23'.5 S	119° 25'.0 E
Delete	contour, between	34° 23'.4 S	119° 25'.3 E
		34° 23'.1 S	119° 25'.5 E
	contour, between	34° 22'.7 S	119° 26'.8 E
		34° 22'.7 S	119° 27'.1 E
Aus 337 (Bremer Bay) [780/2025]			
Insert	depth, 19 ₂ m, enclosed by contour	34° 23'.03 S	119° 26'.23 E
Replace	depth, 4 ₈ m, with depth, 2 ₅ m	34° 22'.8 S	119° 24'.6 E
	depth, 7 ₉ m, with depth, 5 ₃ m	34° 23'.4 S	119° 24'.8 E
	depth, 6m, with depth, 4 ₉ m	34° 23'.5 S	119° 25'.0 E

1070 AUSTRALIA - WESTERN AUSTRALIA - SOUTH AUSTRALIA - Perth to Glenelg - Submarine cable
 Gulf Agency Company (Australia)

Aus 112 [1025/2025]

Insert submarine cable, between

31° 51'.440 S	115° 41'.080 E
31° 52'.400 S	115° 41'.217 E
31° 52'.679 S	115° 41'.362 E
31° 52'.938 S	115° 41'.691 E
31° 53'.120 S	115° 42'.143 E
31° 53'.384 S	115° 42'.574 E
31° 53'.640 S	115° 43'.000 E
31° 53'.840 S	115° 43'.190 E
31° 54'.024 S	115° 43'.254 E
31° 54'.240 S	115° 43'.260 E
31° 55'.251 S	115° 43'.061 E
31° 55'.510 S	115° 43'.160 E
31° 55'.790 S	115° 43'.470 E
31° 56'.152 S	115° 44'.181 E
31° 56'.260 S	115° 44'.630 E
31° 56'.250 S	115° 45'.304 E

Aus 117 [1023/2025]

Insert submarine cable, between

32° 12'.630 S	115° 40'.261 E
32° 12'.635 S	115° 39'.676 E
32° 12'.662 S	115° 38'.936 E
32° 12'.803 S	115° 37'.501 E
32° 12'.755 S	115° 36'.469 E
32° 12'.746 S	115° 36'.000 E

Aus 335 [781/2025]

Insert submarine cable, between

34° 56'.18 S	114° 07'.35 E
35° 06'.44 S	114° 20'.75 E
35° 08'.71 S	114° 27'.38 E
35° 11'.68 S	114° 32'.60 E
35° 14'.49 S	114° 35'.83 E
35° 17'.53 S	114° 37'.87 E
35° 24'.38 S	114° 38'.50 E
35° 31'.84 S	114° 40'.22 E
35° 37'.45 S	114° 44'.87 E
35° 40'.42 S	114° 51'.14 E

Aus 336 [867/2025]

Insert submarine cable, between

35° 45'.62 S	115° 07'.11 E
35° 48'.55 S	115° 17'.22 E
35° 51'.65 S	115° 38'.45 E
35° 52'.37 S	116° 03'.76 E
35° 53'.03 S	116° 11'.28 E

Aus 343 [856/2024]

Insert submarine cable, between

35° 31'.90 S	137° 01'.98 E
35° 32'.06 S	136° 45'.34 E
35° 38'.31 S	136° 08'.10 E
35° 40'.42 S	136° 03'.49 E
35° 50'.85 S	135° 52'.93 E
36° 16'.20 S	135° 34'.73 E
36° 17'.01 S	135° 33'.80 E

Aus 346 [248/2025]

Insert submarine cable, between

35° 50'.01 S	135° 53'.77 E
35° 50'.85 S	135° 52'.93 E
36° 16'.20 S	135° 34'.73 E
36° 23'.19 S	135° 26'.70 E
36° 26'.84 S	135° 24'.75 E
36° 29'.21 S	135° 22'.01 E

Aus 485 [982/2025]

Insert submarine cable, between

34° 57'.58 S	138° 30'.38 E
34° 57'.62 S	138° 27'.38 E
35° 00'.23 S	138° 22'.32 E
35° 14'.86 S	138° 06'.76 E

1070

AUSTRALIA - WESTERN AUSTRALIA - SOUTH AUSTRALIA - Perth to Glenelg - Submarine cable

35° 18'.68 S	137° 59'.97 E
35° 22'.22 S	137° 48'.85 E
35° 31'.82 S	137° 12'.03 E
35° 32'.06 S	136° 45'.46 E
35° 38'.36 S	136° 08'.11 E
35° 40'.20 S	136° 03'.80 E
35° 50'.62 S	135° 53'.10 E
36° 15'.97 S	135° 34'.90 E
36° 23'.19 S	135° 26'.70 E
36° 35'.91 S	135° 17'.43 E
36° 41'.65 S	135° 15'.88 E
36° 49'.36 S	135° 18'.70 E
36° 46'.04 S	135° 09'.22 E
36° 46'.14 S	135° 06'.02 E

Aus 754 [978/2025]

Insert submarine cable, between

31° 48'.69 S	115° 20'.61 E
31° 49'.22 S	115° 21'.13 E
31° 51'.55 S	115° 20'.91 E
31° 53'.91 S	115° 20'.95 E
31° 55'.71 S	115° 21'.25 E
31° 58'.74 S	115° 21'.00 E
32° 00'.72 S	115° 21'.42 E
32° 01'.85 S	115° 22'.11 E
32° 07'.50 S	115° 28'.28 E
32° 07'.88 S	115° 29'.02 E
32° 09'.10 S	115° 29'.96 E
32° 12'.40 S	115° 33'.88 E
32° 12'.70 S	115° 34'.87 E
32° 12'.78 S	115° 37'.54 E
32° 12'.61 S	115° 40'.27 E
31° 56'.26 S	115° 45'.29 E
31° 56'.19 S	115° 44'.31 E
31° 55'.79 S	115° 43'.47 E
31° 55'.25 S	115° 43'.07 E
31° 54'.13 S	115° 43'.29 E
31° 53'.71 S	115° 43'.08 E
31° 52'.66 S	115° 41'.29 E
31° 48'.43 S	115° 40'.61 E
31° 47'.81 S	115° 40'.24 E
31° 47'.41 S	115° 39'.65 E
31° 47'.29 S	115° 38'.75 E
31° 47'.39 S	115° 30'.04 E
31° 48'.68 S	115° 24'.65 E
31° 48'.61 S	115° 21'.33 E
31° 48'.69 S	115° 20'.57 E
31° 48'.56 S	115° 19'.54 E
31° 48'.37 S	115° 12'.37 E
31° 45'.19 S	115° 03'.78 E
31° 43'.85 S	115° 01'.14 E
31° 43'.51 S	115° 00'.02 E
31° 40'.16 S	114° 51'.60 E

submarine cable, between

Aus 780 [938/2025]

Insert submarine cable, between

35° 05'.41 S	138° 16'.88 E
35° 14'.86 S	138° 06'.76 E
35° 18'.68 S	137° 59'.97 E
35° 22'.43 S	137° 48'.05 E
35° 27'.23 S	137° 29'.48 E
35° 31'.84 S	137° 11'.73 E
35° 32'.01 S	136° 46'.18 E
35° 32'.28 S	136° 43'.66 E
35° 32'.92 S	136° 40'.00 E

Aus 781 [982/2025]

Insert submarine cable, between

34° 57'.58 S	138° 30'.38 E
34° 57'.71 S	138° 29'.44 E
34° 57'.42 S	138° 28'.35 E
34° 58'.16 S	138° 25'.95 E
34° 59'.34 S	138° 24'.33 E

1070

AUSTRALIA - WESTERN AUSTRALIA - SOUTH AUSTRALIA - Perth to Glenelg - Submarine cable

35° 00'.20 S	138° 22'.47 E
35° 14'.86 S	138° 06'.76 E
35° 18'.68 S	137° 59'.97 E
35° 22'.43 S	137° 48'.05 E
35° 24'.39 S	137° 40'.46 E

Aus 4060 (INT 60) [774/2025]

Insert submarine cable, between

31° 37'.7 S	114° 20'.4 E
31° 42'.6 S	113° 59'.2 E
32° 29'.4 S	113° 45'.6 E
34° 20'.8 S	113° 49'.4 E
34° 55'.1 S	114° 04'.5 E
35° 14'.5 S	114° 35'.8 E
35° 37'.9 S	114° 43'.9 E
35° 51'.7 S	115° 38'.5 E
36° 25'.6 S	124° 52'.7 E
36° 41'.4 S	134° 28'.0 E
36° 49'.3 S	135° 18'.6 E
36° 36'.7 S	135° 15'.2 E
35° 39'.7 S	136° 05'.8 E
35° 23'.3 S	137° 49'.9 E
34° 57'.6 S	138° 30'.1 E

Aus 4070 (INT 70) [963/2023]

Insert submarine cable, between

31° 37'.7 S	114° 20'.4 E
31° 42'.6 S	113° 59'.2 E
32° 29'.4 S	113° 45'.6 E
34° 20'.8 S	113° 49'.4 E
34° 55'.1 S	114° 04'.5 E
35° 14'.5 S	114° 35'.8 E
35° 37'.9 S	114° 43'.9 E
35° 51'.7 S	115° 38'.5 E
35° 54'.8 S	116° 27'.5 E

Aus 4708 (INT 708) [NE 28/11/2025]

Insert submarine cable, between

31° 37'.7 S	114° 20'.4 E
31° 37'.6 S	114° 05'.2 E
31° 50'.4 S	113° 54'.4 E
32° 29'.4 S	113° 45'.6 E
34° 20'.8 S	113° 49'.4 E
34° 55'.1 S	114° 04'.5 E
35° 14'.5 S	114° 35'.8 E
35° 37'.9 S	114° 43'.9 E
35° 50'.2 S	115° 25'.7 E
35° 58'.8 S	117° 30'.0 E

Aus 4709 (INT 709) [596/2025]

Insert submarine cable, between

31° 37'.7 S	114° 20'.4 E
31° 37'.6 S	114° 05'.2 E
31° 50'.4 S	113° 54'.4 E
32° 29'.4 S	113° 45'.6 E
34° 20'.8 S	113° 49'.4 E
34° 55'.1 S	114° 04'.5 E
35° 14'.5 S	114° 35'.8 E
35° 37'.9 S	114° 43'.9 E
35° 50'.2 S	115° 25'.7 E
36° 17'.4 S	121° 55'.4 E
36° 21'.7 S	123° 54'.7 E
36° 32'.3 S	128° 14'.5 E
36° 42'.4 S	133° 22'.6 E
36° 41'.6 S	134° 33'.3 E
36° 49'.3 S	135° 18'.6 E
36° 37'.9 S	135° 16'.0 E
35° 40'.0 S	136° 03'.6 E
35° 39'.1 S	136° 09'.6 E

Aus 4710 (INT 710) [268/2019]

Insert submarine cable, between

34° 15'.0 S	113° 49'.2 E
34° 20'.8 S	113° 49'.4 E
34° 55'.1 S	114° 04'.5 E

1070	AUSTRALIA - WESTERN AUSTRALIA - SOUTH AUSTRALIA - Perth to Glenelg - Submarine cable		
		35° 14'.5 S	114° 35'.8 E
		35° 37'.9 S	114° 43'.9 E
		35° 50'.2 S	115° 25'.7 E
		35° 59'.5 S	117° 29'.9 E
1071	INDIAN OCEAN - Christmas Island - Norris Point - Mooring buoys		
LINX			
Aus 920 (Norris Point) [656/2025]			
Delete	mooring buoy	10° 27'.05 S	105° 42'.45 E
	mooring buoy	10° 27'.17 S	105° 42'.48 E
	mooring buoy	10° 27'.28 S	105° 42'.36 E
1072	AUSTRALIA - SOUTH AUSTRALIA - Kangaroo Island - Vivonne Bay to False Cape - Depths southwards		
Australian Hydrographic Office			
Aus 346 [1070/2025]			
Insert	accompanying block A	36° 10'.0 S	137° 26'.0 E
	accompanying block B	36° 10'.0 S	137° 50'.0 E
	accompanying ZOC diagram	37° 21'.0 S	135° 54'.0 E
Aus 485 [1070/2025]			
Insert	accompanying ZOC diagram	32° 46'.0 S	136° 34'.0 E
	accompanying block	36° 08'.0 S	137° 36'.0 E
Aus 4709 (INT 709) [1070/2025]			
Insert	accompanying block	35° 35'.0 S	138° 40'.0 E
1073	AUSTRALIA - SOUTH AUSTRALIA - Port Adelaide - Light buoys		
Department for Infrastructure and Transport SA Notice 69(T)/2025			
Aus 130 [657/2025]			
Insert	special spar light buoy, <i>Fl.Y.5s</i> , without topmark	34° 45'.960 S	138° 25'.255 E
	special spar light buoy, <i>Fl.Y.5s</i> , without topmark	34° 54'.160 S	138° 28'.546 E

1074(T)/2025 AUSTRALIA - QUEENSLAND - Gladstone - Dredging operations; bed levelling operations; survey
Maritime Safety Queensland Notice 539(T)/2025

The dredge *TSHD Brisbane* and support vessel *Pacific Titan* are conducting dredging and bed levelling operations in all channels, berths and approaches. *QG Norfolk* will be conducting survey operations.

Vessels will display appropriate lights and shapes.

Mariners are advised to navigate with caution in the area.

Chart temporarily affected - Aus 245 - Aus 246

1075(P)/2025 AUSTRALIA - QUEENSLAND - Great Barrier Reef - Joist Reef to Hydrographers Passage - Shoaling
LADS Flight

Latest survey shows shoaler depths than those charted may exist in an area bounded by the following positions:

19° 27'.1 S 149° 38'.9 E

20° 12'.2 S 149° 39'.1 E

20° 12'.2 S 150° 18'.5 E

19° 39'.2 S 150° 18'.5 E.

Charts will updated in due course.

Chart which will be affected - Aus 821 - Aus 825

1076(T)/2025 AUSTRALIA - QUEENSLAND - Great Barrier Reef - Joist Reef to Hydrographers Passage - Shoaling
Former Notice - 523(P)/2017 is cancelled
LADS Flight

Cancel this notice on receipt.

Chart formerly affected - Aus 821 - Aus 824 - Aus 825

1077(T)/2025 AUSTRALIA - TIMOR SEA - Sahul Banks - Subsea operations
DOF Management

On or about 22 December 2025, vessel *Skandi Hercules* and an ROV will be conducting subsea operations in the vicinity of position 10° 36'.88 S 125° 59'.14 E.

Mariners are advised to navigate with caution in the area. 500m clearance requested.

Chart temporarily affected - Aus 312

1078(T)/2025 AUSTRALIA - WESTERN AUSTRALIA - Barrow Island - Subsea operations; survey operations
completed northwestwards

Former Notice - 791(T)/2025 is cancelled

DOF Management

Cancel this notice on receipt.

Chart formerly affected - Aus 328

1079(T)/2025 AUSTRALIA - WESTERN AUSTRALIA - Eugene McDermott Shoal - Steel truss

Former Notice - 1001(T)/2025 is cancelled

McDermott Australia

A yellow steel truss structure, with a height of 19m, has been installed in position 12° 57'.86 S 124° 26'.55 E for a future drill rig. The structure is marked by a light, *Mo(U)10s*.

Mariners are advised to navigate with caution in the area.

Chart temporarily affected - Aus 319

1080(T)/2025 AUSTRALIA - WESTERN AUSTRALIA - Exmouth Plateau - Subsea operations

Woodside Energy Ltd

Vessels are conducting subsea operations in the vicinity of position 19° 49'.0 S 113° 11'.0 E.

A 500m exclusion zone exists around vessels.

Mariners are advised to navigate with caution in the area.

Chart temporarily affected - Aus 4723 (INT 723)

1081(T)/2025 AUSTRALIA - WESTERN AUSTRALIA - Exmouth Plateau - Drilling operations completed

Former Notice - 449(T)/2025 is cancelled

Woodside Energy Ltd

Cancel this notice on receipt.

Chart formerly affected - Aus 4723 (INT 723)

1082(T)/2025 AUSTRALIA - WESTERN AUSTRALIA - Geraldton - Scientific instruments

Mid West Ports Notice 17/2025

Scientific instruments marked by special light buoys, *Fl. Y. 3s*, exist on the seabed in positions 28° 46'.36 S 114° 36'.32 E and 28° 46'.21 S 114° 36'.48 E.

Mariners are requested to avoid anchoring, fishing or trawling in the vicinity.

Chart temporarily affected - Aus 81

1083(T)/2025 AUSTRALIA - WESTERN AUSTRALIA - Glomar Shoal - Subsea operations westwards

DOF Australia

On or about 20 December 2025, vessel *Skandi Singapore* will be conducting subsea operations, which involves diving, in the following positions:

19° 26'.96 S 116° 29'.29 E

19° 33'.39 S 116° 29'.66 E

19° 34'.71 S 116° 26'.98 E

19° 35'.52 S 116° 26'.12 E.

Mariners are advised to navigate with caution in the area.

Chart temporarily affected - Aus 327

1084(T)/2025 AUSTRALIA - WESTERN AUSTRALIA - Joseph Bonaparte Gulf - Geophysical operations northwards

EGS Survey Pty Ltd

On or about 22 December 2025, vessel *Outer Limit*, with a 500m towed array, will be conducting geophysical survey operations in an area within a 10M radius of position 12° 52'.71 S 128° 29'.28 E.

The vessel will display appropriate lights and shapes and will monitor VHF Ch 16.

2 light buoys, *Fl. Y. 2s*, will be deployed in the area for the duration of the survey operations.

Mariners are advised to navigate with caution in the area.

Chart temporarily affected - Aus 315 - Aus 318

1085(T)/2025 AUSTRALIA - VICTORIA - Ninety Mile Beach - Scientific instrument southwards

Ocean Winds

A light buoy, *Fl. Y. 4s*, with AIS exists in position 38° 58'.42 S 147° 51'.54 E.

Chart temporarily affected - Aus 357 - Aus 487

1086(T)/2025 AUSTRALIA - VICTORIA - Port Campbell - Drill rig southwestwards

Former Notice - 960(T)/2025 is cancelled

MODU *Transocean Equinox*

Drill rig *Transocean Equinox* is conducting drilling operations in position 39° 00'.86 S 142° 36'.48 E.

Chart temporarily affected - Aus 349

1087(T)/2025 AUSTRALIA - VICTORIA - Port Phillip - Kirk Point - Light unlit

Parks Victoria Notice 593(T)/2025

The light, *F* (38° 01'.68 S 144° 33'.96 E), is unlit.

Mariners are advised to navigate with caution in the area.

Chart temporarily affected - Aus 157

1088(T)/2025 AUSTRALIA - VICTORIA - Port Phillip - Point Nepean - Light beacon unlit

Parks Victoria Notice 592(T)/2025

The light beacon, *Fl.Y.5s* (38° 18'.17 S 144° 39'.40 E), is unlit.

Mariners are advised to navigate with caution in the area.

Chart temporarily affected - Aus 144

1089(T)/2025 AUSTRALIA - VICTORIA - Port Phillip - Coles Channel - Light beacon unlit

Parks Victoria Notice 591(T)/2025

The light beacon, *Fl.Y.5s* (38° 12'.16 S 144° 43'.40 E), is unlit.

Mariners are advised to navigate with caution in the area.

Chart temporarily affected - Aus 143 - Aus 157

1090(T)/2025 AUSTRALIA - VICTORIA - Port Phillip - Martha Point - Light buoy off station

Parks Victoria Notice 560(T)/2025

The special light buoy, *Fl(3)Y.10s R1* (38° 16'.47 S 144° 58'.36 E), is off station.

Mariners are advised to navigate with caution in the area.

Chart temporarily affected - Aus 143

1091(T)/2025 AUSTRALIA - TASMANIA - Macquarie Harbour - Scientific instrument recovered

Former Notice - 344(T)/2024 is cancelled

Marine and Safety Tasmania Notice M76(T)/2025

Cancel this notice on receipt.

Chart formerly affected - Aus 177 - Aus 792

1092(T)/2025 AUSTRALIA - TASMANIA - Macquarie Harbour - Scientific instruments

Marine and Safety Tasmania Notice M362/2025

111 subsurface receiver buoys, 4m below the surface, will be deployed throughout Macquarie Harbour.

Individual locations of each buoy can be found in AHO ENC products.

Mariners should navigate with caution and avoid anchoring or trawling in the vicinity.

Chart temporarily affected - Aus 177

1093(T)/2025 NEW ZEALAND - Australia - Tasman Sea - Submarine cable removal

Mertech Marine

On or about the 16 December 2025, Mertech Marine will be conducting cable recovery of the Tasman 2 Cable between Auckland and Sydney between the following positions:

36° 50'.8 S 174° 08'.8 E
37° 00'.6 S 173° 00'.3 E
36° 46'.9 S 164° 32'.0 E
35° 56'.1 S 160° 21'.3 E
36° 04'.1 S 159° 48'.5 E
35° 30'.8 S 156° 07'.5 E
34° 53'.1 S 154° 23'.1 E.

Mariners are advised to navigate with caution in the area.

Chart temporarily affected - Aus 489 - Aus 4060 (INT 60) - Aus 4601 (INT 601) - Aus 4602 (INT 602)

II

HYDROGRAPHIC REPORTS

NIL

To accompany Australian Notice to Mariners 1061/2025

FAIRWAY AREAS C AND D

Vessels waiting to enter the port are not permitted to anchor inside port limits. Vessels entering the port should not proceed westward of the pilot boarding place without permission of Sydney VTS (VHF Ch13).

Note for chart Aus 198

To accompany Australian Notice to Mariners 1065/2025

ENVIRONMENTALLY SENSITIVE SEA
AREA (ESSA)

Areas of this chart are Environmentally Sensitive Sea Areas (ESSA). Areas within this marine protected area have restrictions on access and activities. For details see Mariners Handbook for Australian Waters AHP 20.

Note for chart Aus 367

To accompany Australian Notice to Mariners 1065/2025

ENVIRONMENTALLY SENSITIVE SEA
AREA (ESSA)

Areas of this chart are Environmentally Sensitive Sea Areas (ESSA). Areas within this marine protected area have restrictions on access and activities. For details see Mariners Handbook for Australian Waters AHP 20.

Note for chart Aus 611

To accompany Australian Notice to Mariners 1065/2025

ENVIRONMENTALLY SENSITIVE SEA
AREA (ESSA)

Areas of this chart are Environmentally Sensitive Sea Areas (ESSA). Areas within this marine protected area have restrictions on access and activities. For details see Mariners Handbook for Australian Waters AHP 20.

Note for chart Aus 613

To accompany Australian Notice to Mariners 1065/2025

ENVIRONMENTALLY SENSITIVE SEA
AREA (ESSA)

Areas of this chart are Environmentally Sensitive Sea Areas (ESSA). Areas within this marine protected area have restrictions on access and activities. For details see Mariners Handbook for Australian Waters AHP 20.

Note for chart Aus 821

To accompany Australian Notice to Mariners 1061/2025

FAIRWAY AREAS A AND B

Vessels waiting to enter the port are not permitted to anchor inside port limits. Vessels entering the port should not proceed westward of the pilot boarding place without permission of Sydney VTS (VHF Ch13).

Note for chart Aus 200

To accompany Australian Notice to Mariners 1065/2025

ENVIRONMENTALLY SENSITIVE SEA
AREA (ESSA)

Areas of this chart are Environmentally Sensitive Sea Areas (ESSA). Areas within this marine protected area have restrictions on access and activities. For details see Mariners Handbook for Australian Waters AHP 20.

Note for chart Aus 490

To accompany Australian Notice to Mariners 1065/2025

ENVIRONMENTALLY SENSITIVE SEA
AREA (ESSA)

Areas of this chart are Environmentally Sensitive Sea Areas (ESSA). Areas within this marine protected area have restrictions on access and activities. For details see Mariners Handbook for Australian Waters AHP 20.

Note for chart Aus 612

To accompany Australian Notice to Mariners 1065/2025

ENVIRONMENTALLY SENSITIVE SEA
AREA (ESSA)

Areas of this chart are Environmentally Sensitive Sea Areas (ESSA). Areas within this marine protected area have restrictions on access and activities. For details see Mariners Handbook for Australian Waters AHP 20.

Note for chart Aus 816

To accompany Australian Notice to Mariners 1065/2025

ENVIRONMENTALLY SENSITIVE SEA
AREA (ESSA)

Areas of this chart are Environmentally Sensitive Sea Areas (ESSA). Areas within this marine protected area have restrictions on access and activities. For details see Mariners Handbook for Australian Waters AHP 20.

Note for chart Aus 829

To accompany Australian Notice to Mariners 1065/2025

ENVIRONMENTALLY SENSITIVE SEA
AREA (ESSA)
Areas of this chart are Environmentally Sensitive Sea Areas (ESSA). Areas within this marine protected area have restrictions on access and activities. For details see Mariners Handbook for Australian Waters AHP 20.

Note for chart Aus 830

To accompany Australian Notice to Mariners 1065/2025

ENVIRONMENTALLY SENSITIVE SEA
AREA (ESSA)
Areas of this chart are Environmentally Sensitive Sea Areas (ESSA). Areas within this marine protected area have restrictions on access and activities. For details see Mariners Handbook for Australian Waters AHP 20.

Note for chart Aus 832

To accompany Australian Notice to Mariners 1065/2025

ENVIRONMENTALLY SENSITIVE SEA
AREA (ESSA)
Areas of this chart are Environmentally Sensitive Sea Areas (ESSA). Areas within this marine protected area have restrictions on access and activities. For details see Mariners Handbook for Australian Waters AHP 20.

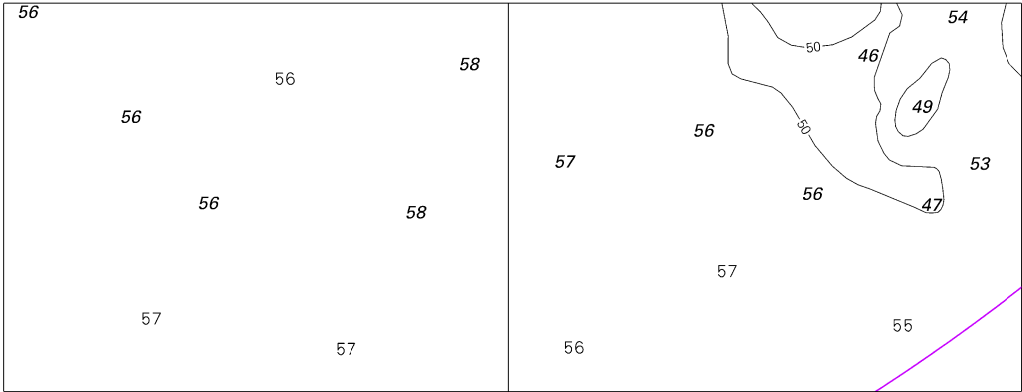
Note for chart Aus 831

To accompany Australian Notice to Mariners 1065/2025

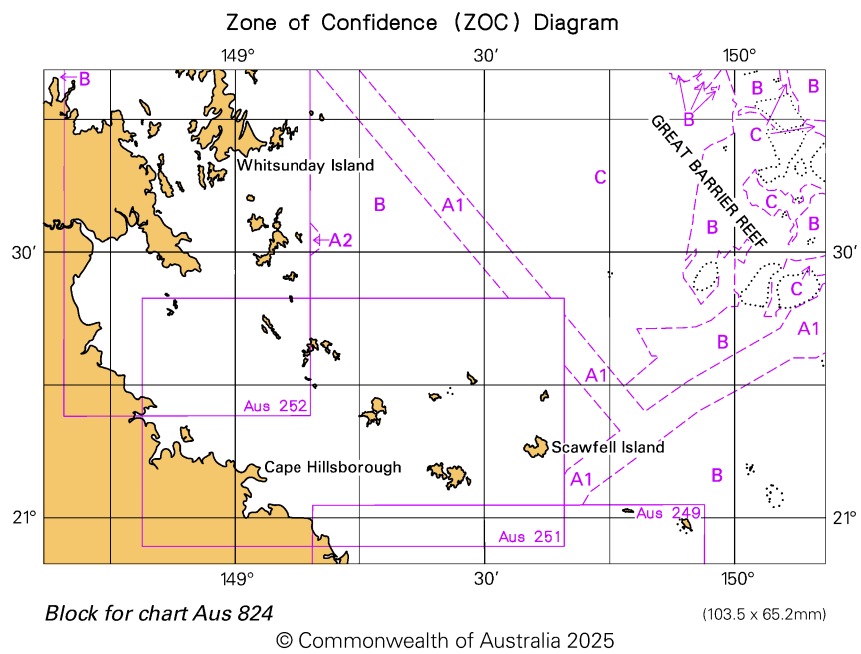
ENVIRONMENTALLY SENSITIVE SEA
AREA (ESSA)
Areas of this chart are Environmentally Sensitive Sea Areas (ESSA). Areas within this marine protected area have restrictions on access and activities. For details see Mariners Handbook for Australian Waters AHP 20.

Note for chart Aus 837

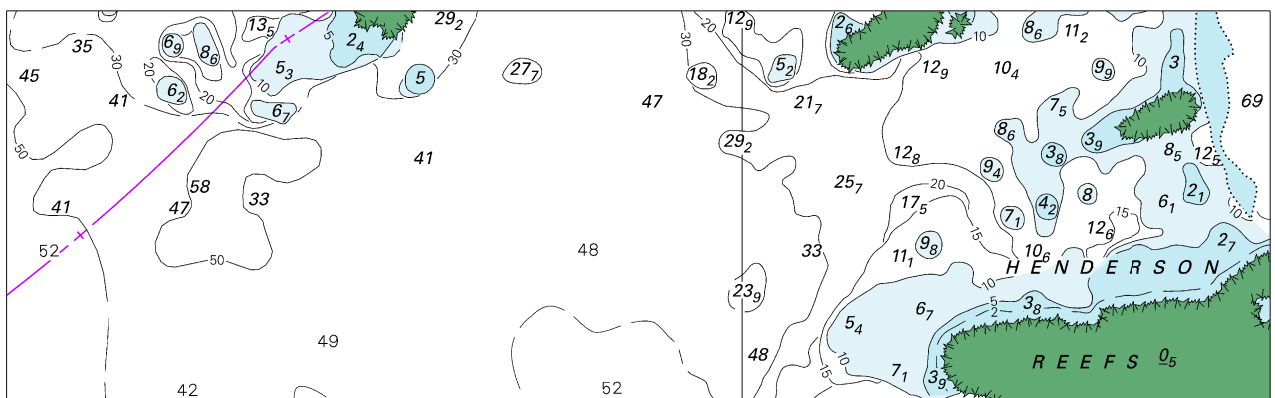
To accompany Australian Notice to Mariners 1062/2025



To accompany Australian Notice to Mariners 1062/2025



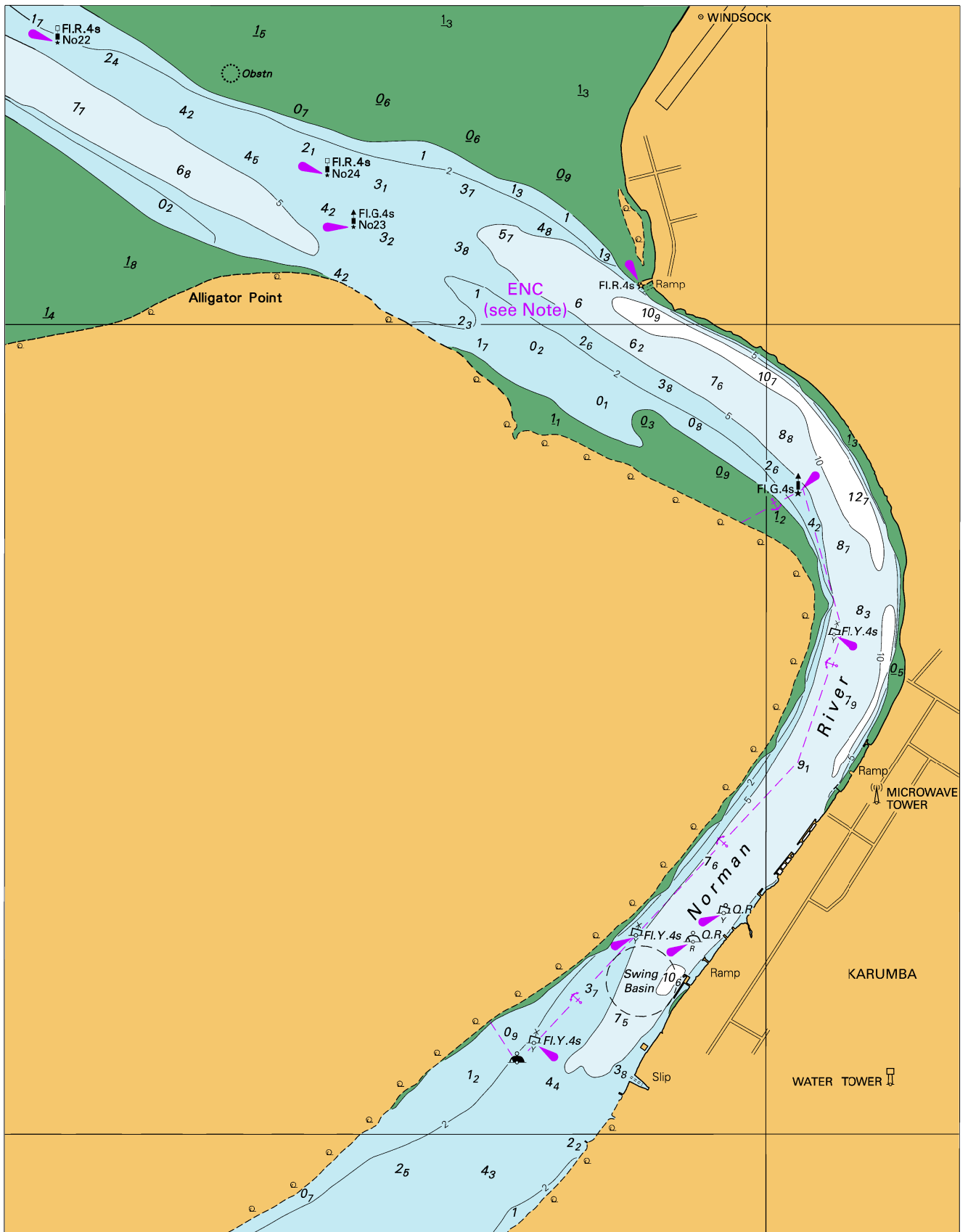
To accompany Australian Notice to Mariners 1062/2025



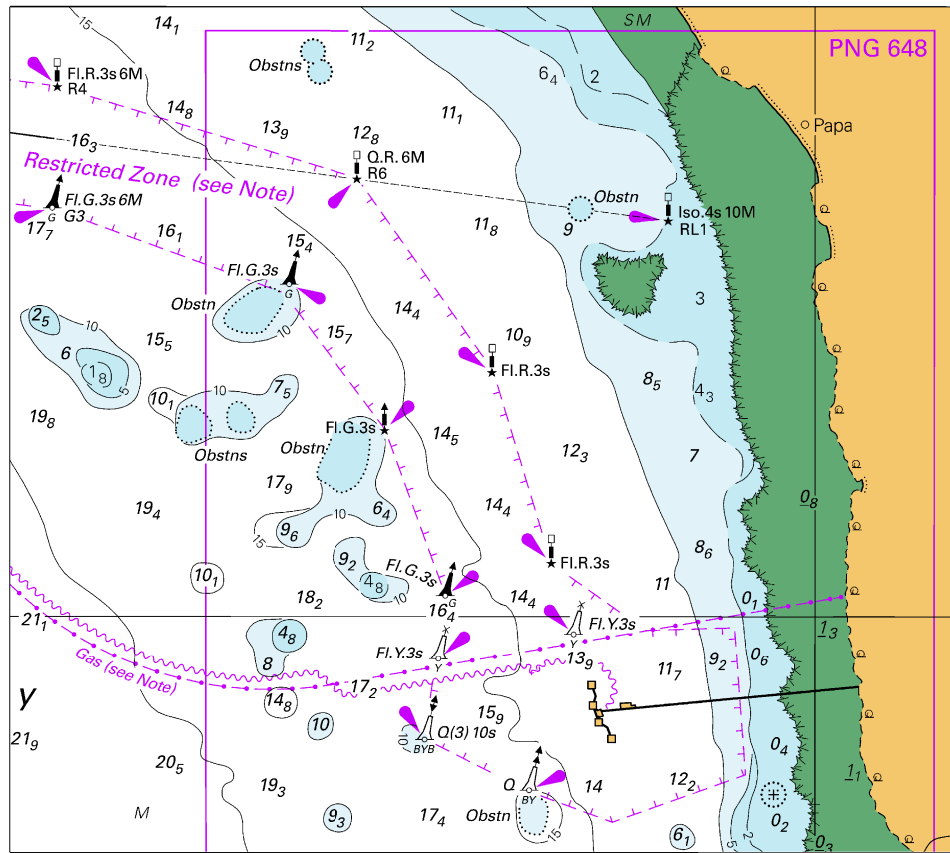
Block B for chart Aus 824

© Commonwealth of Australia 2025

(167.0 x 51.2mm)



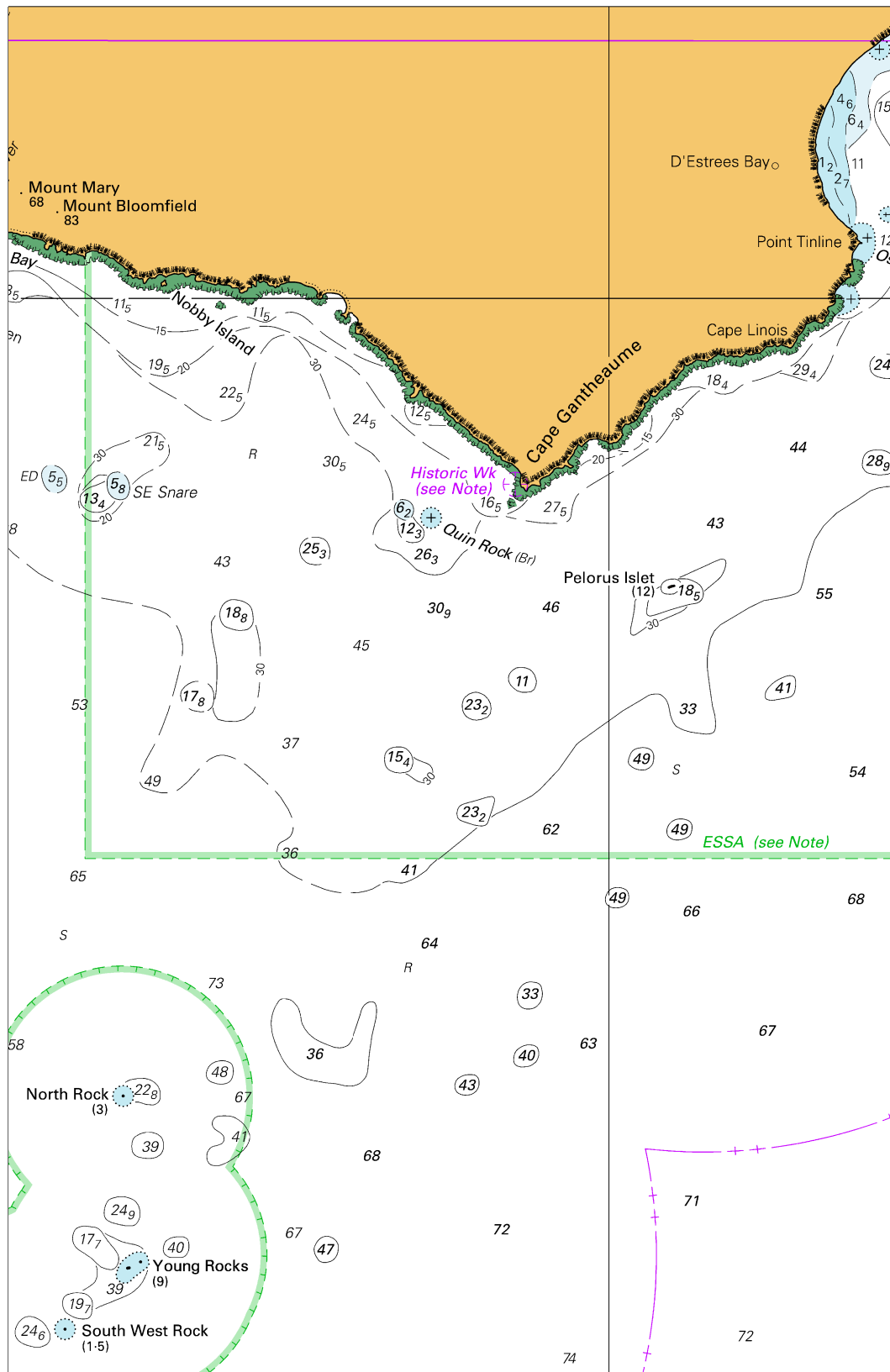
To accompany Australian Notice to Mariners 1066/2025



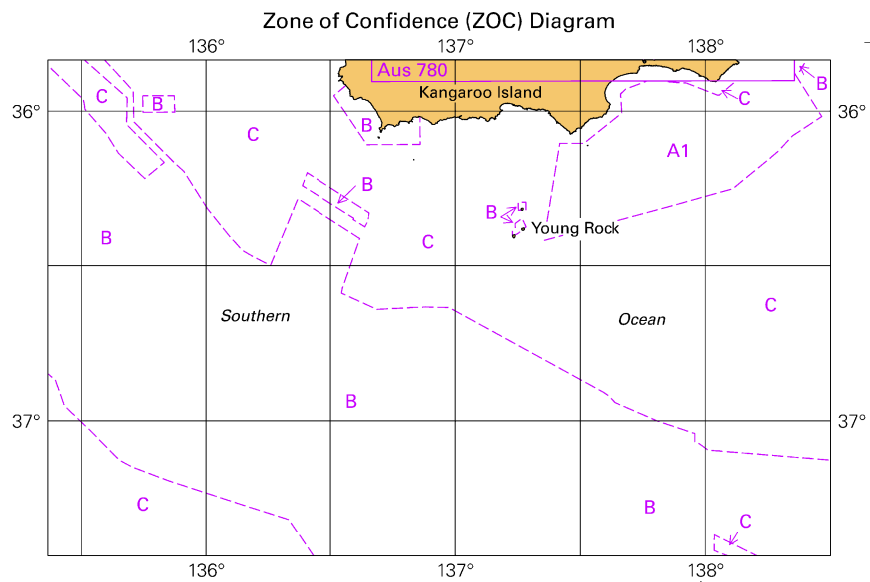
Block for chart PNG 647

© Commonwealth of Australia 2025

(124.8 x 111.8mm)



To accompany Australian Notice to Mariners 1072/2025

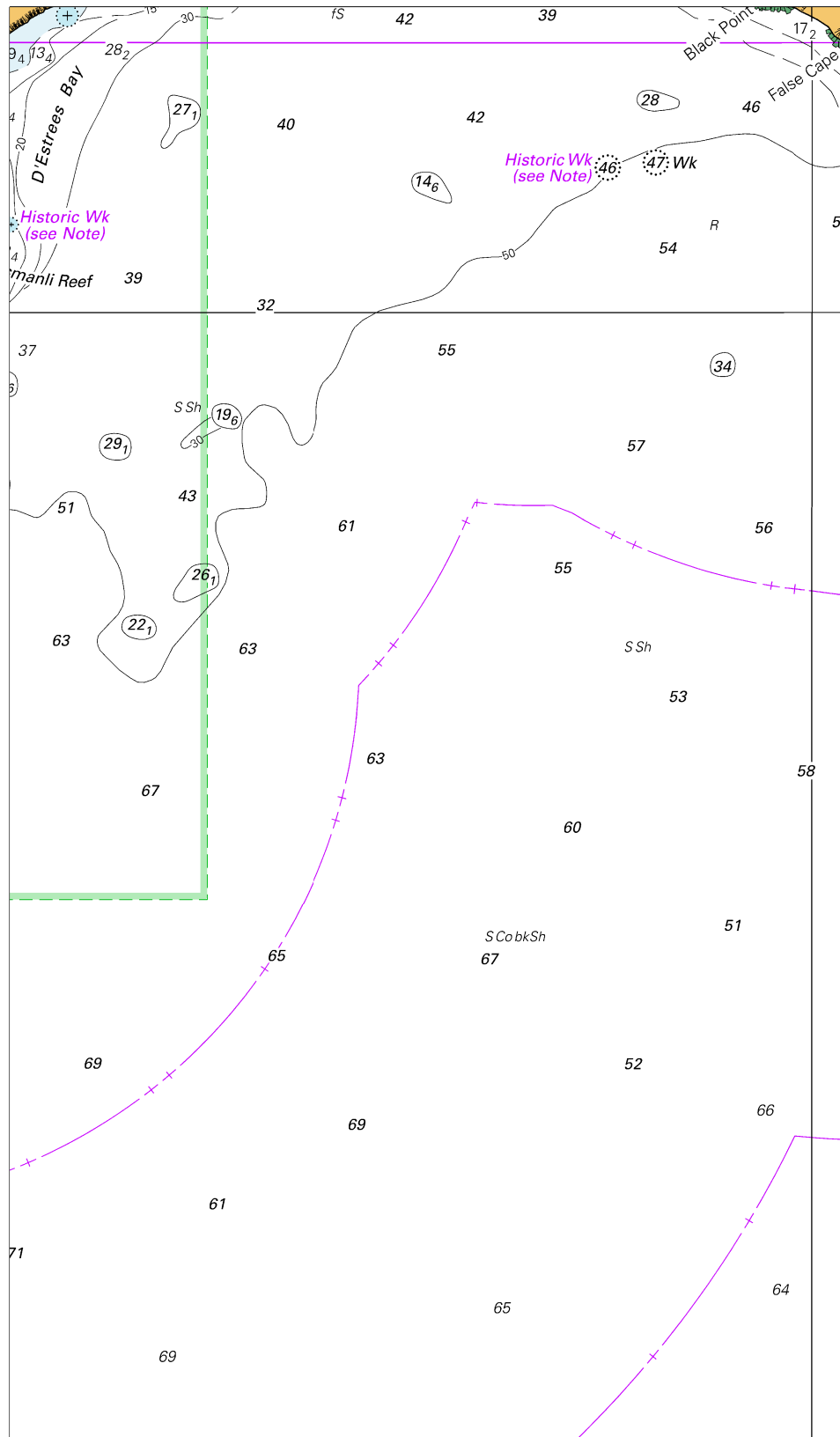


Block for chart Aus 346

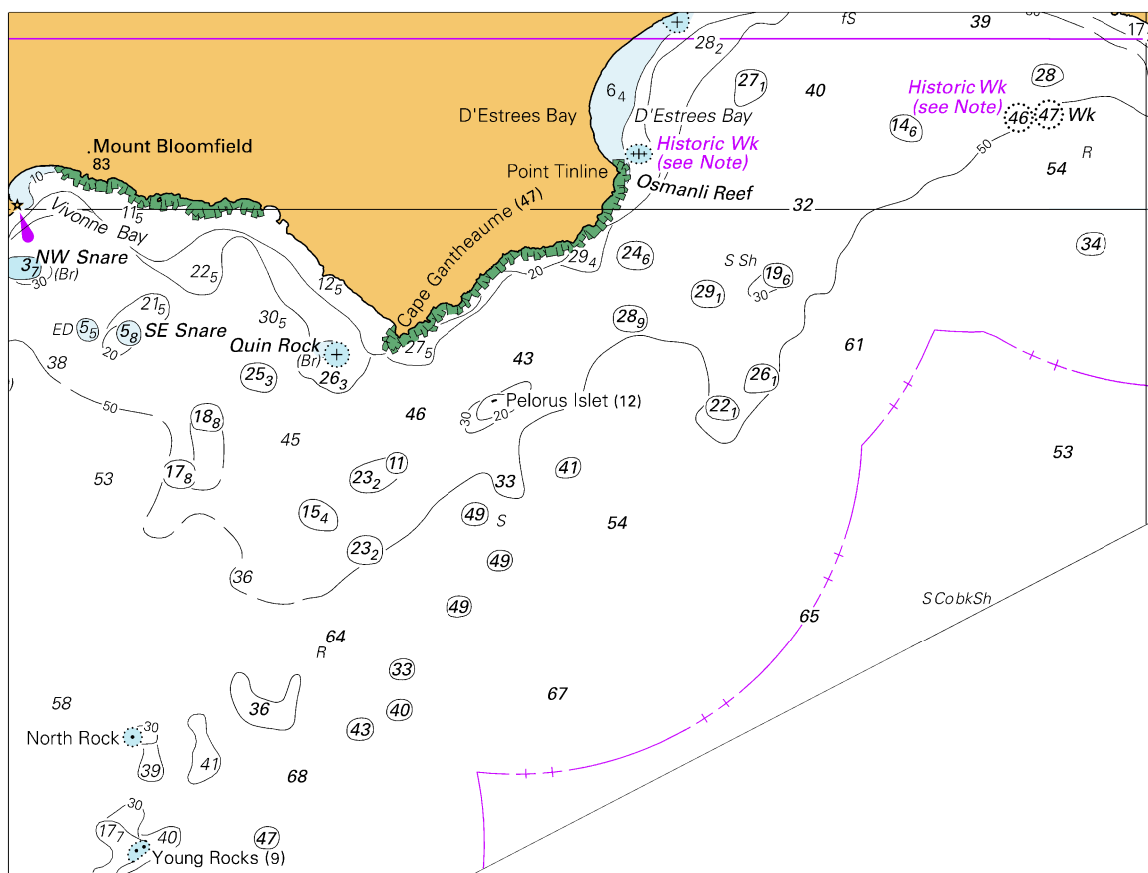
(103.4 x 65.7mm)

© Commonwealth of Australia 2025

To accompany Australian Notice to Mariners 1072/2025



To accompany Australian Notice to Mariners 1072/2025

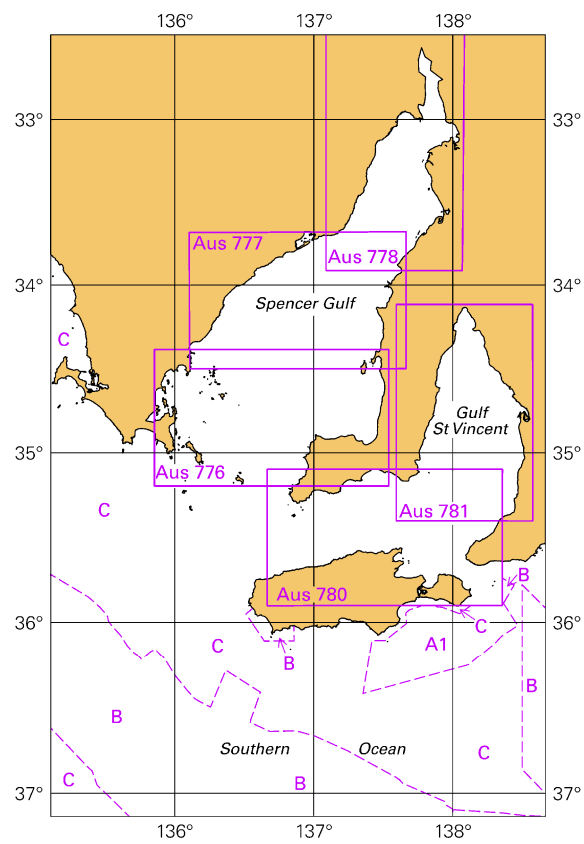


Block for chart Aus 485

© Commonwealth of Australia 2025

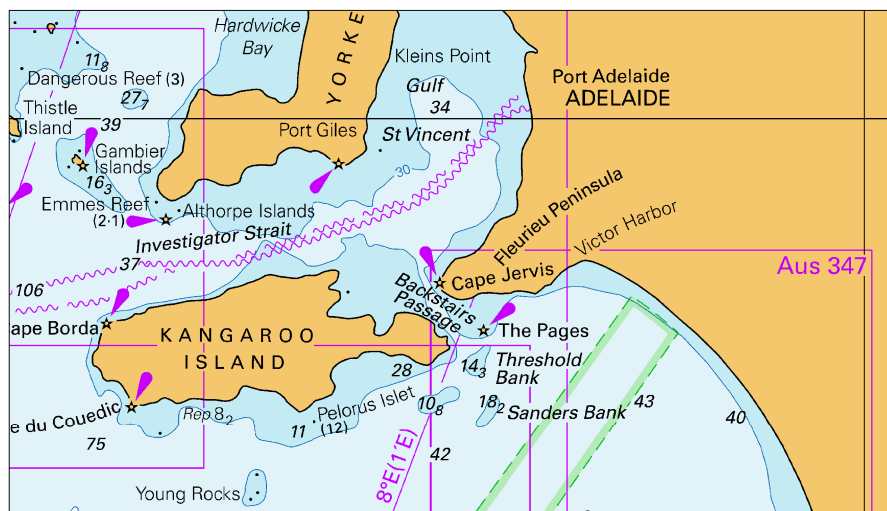
(152.0 x 114.6mm)

To accompany Australian Notice to Mariners 1072/2025



Block for chart Aus 485 (66.7 x 103.4mm)
© Commonwealth of Australia 2025

To accompany Australian Notice to Mariners 1072/2025



Block for chart Aus 4709

© Commonwealth of Australia 2025

(117.3 x 66.4mm)