



22 August 2025

Edition 17

AUSTRALIAN NOTICES TO MARINERS

Notices 725 - 768

Published fortnightly by the Australian Hydrographic Office



Australian Notices to Mariners are the authority for correcting charts and publications published by the Australian Hydrographic Office covering Australia, Papua New Guinea, Solomon Islands, Australian Antarctic Territory and Timor-Leste.

Commodore R.L. PHILLIPS RAN
Hydrographer of Australia

SECTIONS.

- I. **Australian Notices to Mariners, including blocks and notes.**
- II. **Hydrographic Reports.**

SUPPLEMENTS.

- I. **Tracings**
- II. **Cumulative List of Australian Notices to Mariners.**
- III. **Cumulative List of Temporary and Preliminary Australian Notices to Mariners.**
- IV. **Temporary and Preliminary Notices in force.**

© Commonwealth of Australia 2025

This work is copyright. Apart from any use permitted under the Copyright Act 1968, no part may be reproduced by any process, adapted, communicated or commercially exploited without prior written permission from The Commonwealth represented by the Australian Hydrographic Office.

IMPORTANT NOTICE

This edition of Notices to Mariners includes all significant information affecting AHO products which the AHO has become aware of since the last edition. All reasonable efforts have been made to ensure the accuracy and completeness of the information, including third party information, on which these updates are based. The AHO regards third parties from which it receives information as reliable, however the AHO cannot verify all such information and errors may therefore exist. The AHO does not accept liability for errors in third party information.

GENERAL INSTRUCTIONS

The substance of these notices should be inserted on the charts affected.

Bearings are referred to the true compass and are reckoned clockwise from North; those relating to lights are given as seen by an observer from seaward.

Positions quoted in notices relate to WGS84 which is the horizontal datum for all charts produced by the Australian Hydrographic Office.

The range quoted for a light is its nominal range.

Depths are with reference to the chart datum of each chart. Heights are above mean high water springs or mean higher high water, as appropriate.

The capital letter (P) or (T) after the number of any notice denotes a preliminary or temporary notice respectively, which are contained separately at the end of the permanent notices.

REPORTING OF DANGERS

Mariners are particularly requested to notify the AUSTRALIAN HYDROGRAPHIC OFFICE, Locked Bag 8801 Wollongong, NSW 2500 (e-mail datacentre@hydro.gov.au or, alternatively by filling in and submitting the [Hydrographic Notes](#) forms located on the web site – www.hydro.gov.au), immediately on the discovery of new dangers or suspected dangers to navigation. For changes or defects in aids to navigation notify AusSAR (Fax 02-6230 6868 or email rccaus@amsa.gov.au).

AUTHORISED USE

Copies of Australian notices are available free of charge from the Australian Hydrographic Office (AHO) website (www.hydro.gov.au) and through the eNotices (email) service (www.hydro.gov.au/enotices/enotices.htm).

Individual Notices may be copied for the purpose of inserting Notice substance on official charts and publications. Paper copies may be printed by chart agents and distributed to customers on a cost recovery basis. Participating chart agents are listed on the AHO website as providing a 'Paper Notices to Mariners' service (www.hydro.gov.au/prodserv/agents-list.htm). Copies of the notices may not be sold for profit without prior written agreement.

NUMERICAL INDEX OF NOTICES TO MARINERS

Edition No 17

Notices	Aus Chart, INT Chart, ENC Cell, AHP, BA Pubs
725	Products - New Charts, New Editions, Withdrawn Charts
726	Aus 155, 157
727	Aus 222
728	Aus 833
729	Aus 825, 826
730	Aus 817
731	Aus 254
732	Aus 236, 814
733	Aus 236, 815
734	Aus 831
735	Aus 4602, 4604, INT 602, 604
736	Aus 714
737	Aus 4708, INT 708
738	Aus 65, 742, 743
739	Aus 4708, INT 708
740	Aus 357
741	SLB 101
742(T)	Aus 222
743(T)	Aus 255
744(T)	Aus 830
745(T)	Aus 490, 819
746(T)	Aus 245, 819
747(T)	Aus 249, 823, 824
748(T)	Aus 830
749(T)	Aus 256
750(T)	PNG 392, 393, 543, 666
751(T)	Aus 710
752(T)	Aus 25
753(T)	Aus 26
754(T)	Aus 17, 25, 309, 718, 719
755(T)	Aus 25, 26, 309, 315, 316, 4603, INT 603
756(T)	Aus 314, 319
757(T)	Aus 119
758(T)	Aus 327, 742
759(T)	Aus 112, 117, 753, 754, 755
760(T)	Aus 327
761(T)	Aus 328, 742
762(T)	Aus 328, 329
763(T)	Aus 328, 329, 744, 4723, INT 723
764(T)	Aus 116
765(T)	Aus 328, 329, 744
766(T)	Aus 349
767(T)	Aus 151
768(T)	Aus 164

NUMERICAL INDEX OF CHARTS AFFECTED

Edition No 17

Aus Chart	Notices
Aus 17	754(T)
Aus 25	752(T), 754(T), 755(T)
Aus 26	753(T), 755(T)
Aus 65	738
Aus 112	759(T)
Aus 116	764(T)
Aus 117	759(T)
Aus 119	757(T)
Aus 151	767(T)
Aus 155	726
Aus 157	726
Aus 164	768(T)
Aus 222	727, 742(T)
Aus 236	732, 733
Aus 245	746(T)
Aus 249	747(T)
Aus 254	731
Aus 255	743(T)
Aus 256	749(T)
Aus 309	754(T), 755(T)
Aus 314	756(T)
Aus 315	755(T)
Aus 316	755(T)
Aus 319	756(T)
Aus 327	758(T), 760(T)
Aus 328	761(T), 762(T), 763(T), 765(T)
Aus 329	762(T), 763(T), 765(T)
Aus 349	766(T)
Aus 357	740
Aus 490	745(T)
Aus 710	751(T)
Aus 714	736
Aus 718	754(T)
Aus 719	754(T)
Aus 742	738, 758(T), 761(T)
Aus 743	738
Aus 744	763(T), 765(T)
Aus 753	759(T)
Aus 754	759(T)
Aus 755	759(T)
Aus 814	732
Aus 815	733
Aus 817	730
Aus 819	745(T), 746(T)
Aus 823	747(T)
Aus 824	747(T)
Aus 825	729
Aus 826	729
Aus 830	744(T), 748(T)
Aus 831	734
Aus 833	728
Aus 4602	735
Aus 4603	755(T)
Aus 4604	735

Aus Chart	Notices
Aus 4708	737, 739
Aus 4723	763(T)
PNG 392	750(T)
PNG 393	750(T)
PNG 543	750(T)
PNG 666	750(T)
SLB 101	741

INT Chart	Notices
INT 602	735
INT 603	755(T)
INT 604	735
INT 708	737, 739
INT 723	763(T)

725 AUSTRALIA - Products - New Charts, New Editions, Withdrawn Charts

Australian Hydrographic Office

New Charts

Chart	Title and Geographical limits	Scale	Publication Date	Remarks
NIL				

New Electronic Navigation Chart (Aus ENC)

Cell Name	Title	Publication Date	Remarks
SB5NOR01	Solomon Islands - New Georgia Island - Noro to Munda	14/8/2025	SB5102P3 is withdrawn.

New Editions and Withdrawn Charts

Chart	Title	Scale	Publication Date	Remarks
NIL				

Electronic Publications

AHP No	Title	Publication Date	Remarks
AHP24	Australian Chart and Publication Maintenance Handbook	22/8/2025	5th Edition.

Chart permanently withdrawn

Charts listed above as withdrawn no longer meet chart carriage requirements and should be marked as "superseded" and replaced with the new chart/ new edition listed prior to passage through the area covered by the new chart.

When placing orders with a chart agent between notice of forthcoming edition and its publication, mariners should advise whether their order pertains to the current edition or the new edition.

For further details refer to the AHO website at www.hydro.gov.au for new edition and new chart stock arrival information.

726 AUSTRALIA - Products - New Charts and New Editions to be published shortly

Australian Hydrographic Office

New Charts to be published shortly

Chart	Title	Scale	Remarks
NIL			

New Editions to be published shortly

Chart	Title	Scale	Remarks
Aus 155	Australia - South Coast - Victoria - Approaches to Port of Melbourne	1:37 500	New edition with general updating throughout; including latest bathymetric data.
Aus 157	Australia - South Coast - Victoria - Port of Geelong and Approaches	1:37 500	New edition with general updating throughout; including latest bathymetric data.

727 AUSTRALIA - NEW SOUTH WALES - Clarence River - Yamba - Nav aids

Port Authority of New South Wales Notice 1/2025

Aus 222 [643/2025]

Replace	light beacon with special light beacon, Fl. Y.5s, with topmark	29° 25'.78 S	153° 21'.39 E
Delete	dashed and continuous line with legend, 238.5°, emanating from light	29° 25'.79 S	153° 21'.37 E
	light and triangular topmark apex down	29° 25'.79 S	153° 21'.37 E

728 AUSTRALIA - QUEENSLAND - Barrow Point to Claremont Isles - Legend
UKHO

Aus 833 [585/2025]

Amend	legend to <i>Adjoining Chart Aus 832</i> in S border	14° 33'.0 S	144° 57'.5 E
-------	--	-------------	--------------

729 AUSTRALIA - QUEENSLAND - Bowen - Historic wreck northeastwards
Australian Hydrographic Office

Note: position of existing chart notes may vary on certain charts.

Aus 825 [242/2025]

Insert	depth, 35m, enclosed by danger circle	19° 50'.28 S	148° 19'.02 E
	restricted area circle with radius 800m, with magenta legend <i>Historic Wk with Protected Zone</i> (see Note), centred on	19° 50'.28 S	148° 19'.02 E
	accompanying chart note, HISTORIC WRECK WITH PROTECTED ZONE	20° 15'.5 S	149° 43'.5 E

Aus 826 [211/2024]

Insert	depth, 35m, enclosed by danger circle	19° 50'.28 S	148° 19'.02 E
	restricted area circle with radius 800m, with magenta legend <i>Historic Wk with Protected Zone</i> (see Note), centred on	19° 50'.28 S	148° 19'.02 E

730 AUSTRALIA - QUEENSLAND - Burrum River - Nav aids
Maritime Safety Queensland Notice 371/2025

Aus 817 [285/2025]

Insert	port lateral cylindrical buoy without topmark	25° 10'.39 S	152° 38'.68 E
	port lateral cylindrical buoy without topmark	25° 10'.65 S	152° 38'.38 E
	port lateral cylindrical buoy without topmark	25° 10'.84 S	152° 38'.03 E
	port lateral cylindrical buoy without topmark	25° 10'.90 S	152° 37'.61 E
Replace	light beacon with port lateral cylindrical light buoy, <i>Fl.R.2-5s</i> , without topmark	25° 10'.2 S	152° 39'.0 E
Delete	beacon	25° 10'.7 S	152° 38'.6 E
	beacon	25° 10'.8 S	152° 38'.2 E
	beacon	25° 10'.9 S	152° 37'.9 E

731 AUSTRALIA - QUEENSLAND - Hamilton Island - Dent Passage - Beacon
Australian Hydrographic Office

Aus 254 (Hamilton and Dent Islands) [647/2025]

Delete	beacon	20° 20'.88 S	148° 56'.74 E
--------	--------	--------------	---------------

732 AUSTRALIA - QUEENSLAND - Moreton Bay - Depths
Port of Brisbane

Aus 236 [646/2025]

Insert	accompanying ZOC diagram	27° 12'.0 S	153° 31'.5 E
	accompanying block	27° 16'.8 S	153° 14'.5 E

Aus 814 [533/2025]

Insert	accompanying block	27° 16'.5 S	153° 14'.5 E
--------	------------------------------------	-------------	--------------

733 AUSTRALIA - QUEENSLAND - Point Cartwright - AIS northeastwards
Australian Maritime Safety Authority Final ATH 11/2025

Aus 236 [732/2025]

Insert	magenta circle with legend, <i>AIS</i> , centred on	26° 39'.28 S	153° 12'.94 E
--------	---	--------------	---------------

Aus 815 [646/2025]

Insert	magenta circle with legend, <i>AIS</i> , centred on	26° 39'.28 S	153° 12'.94 E
--------	---	--------------	---------------

734 AUSTRALIA - QUEENSLAND - Trinity Opening - Depths

Australian Hydrographic Office

Aus 831 [319/2025]Insert [accompanying block](#)

16° 24'.5 S

146° 03'.0 E

735 AUSTRALIA - CORAL SEA - Mellish Reef - Historic wreck northeastwards

Australian Hydrographic Office

Note: position of existing chart notes may vary on certain charts.**Aus 4602 (INT 602) [525/2025]**Insert magenta legend, *Historic Wk with Protected Zone (see Note)*
[accompanying chart note, HISTORIC WRECK WITH PROTECTED ZONE](#)

16° 02'.8 S

157° 39'.4 E

32° 20'.0 S

148° 50'.0 E

Aus 4604 (INT 604) [537/2025]Replace [chart note, HISTORIC WRECK with accompanying chart note, HISTORIC WRECK WITH PROTECTED ZONE in N border](#)

0° 04'.9 N

167° 30'.0 E

Amend magenta legend to *Historic Wks with Protected Zone (see Note)*
magenta legend to *Historic Wk with Protected Zone (see Note)*

15° 24'.1 S

155° 44'.6 E

16° 02'.8 S

157° 39'.4 E

736 AUSTRALIA - NORTHERN TERRITORY - Bowen Strait - Wreck

Department of Defence

Aus 714 [798/2023]

Insert dangerous wreck, centred on

11° 09'.77 S

132° 25'.61 E

737 INDONESIA - Java - Tegal - Wreck

UKHO Notice 33/3518/2025

Aus 4708 (INT 708) [850/2024]

Insert dangerous wreck

6° 45'.0 S

109° 40'.0 E

738 AUSTRALIA - WESTERN AUSTRALIA - Barrow Island - Town Point - Depths

Australian Hydrographic Office

Aus 65 [692/2025]

Insert	depth, 2 ₂ m	20° 48'.22 S	115° 28'.90 E
Replace	depth, 2 ₈ m, with depth, 1 ₅ m, enclosed by contour	20° 49'.8 S	115° 30'.4 E
	depth, 2 ₈ m, with depth, 1m, enclosed by contour	20° 50'.1 S	115° 30'.3 E
Delete	depth, 0 ₅ m, and enclosing contour	20° 48'.3 S	115° 28'.9 E

Aus 742 [357/2025]

Insert	contour, between	20° 48'.05 S	115° 28'.87 E
		20° 48'.43 S	115° 28'.76 E
	contour, between	20° 48'.39 S	115° 28'.98 E
		20° 48'.24 S	115° 29'.05 E
	depth, 1m, and extend contour NE to enclose	20° 50'.09 S	115° 30'.26 E
Replace	depth, 2 ₈ m, with depth, 1 ₅ m, enclosed by contour	20° 49'.8 S	115° 30'.4 E
Delete	contour, between	20° 48'.0 S	115° 28'.9 E
		20° 48'.3 S	115° 29'.0 E
		20° 48'.4 S	115° 28'.8 E

Aus 743 [598/2025]

Insert	contour, between	20° 48'.09 S	115° 28'.83 E
		20° 48'.43 S	115° 28'.76 E
	depth, 1m, and extend contour NE to enclose	20° 50'.09 S	115° 30'.26 E
Replace	depth, 2 ₈ m, with depth, 1 ₅ m, enclosed by contour	20° 49'.8 S	115° 30'.4 E
Delete	contour, between	20° 48'.1 S	115° 28'.8 E
		20° 48'.3 S	115° 29'.0 E
		20° 48'.4 S	115° 28'.8 E

739 AUSTRALIA - WESTERN AUSTRALIA - Historic wreck

Australian Hydrographic Office

Note: position of existing chart notes may vary on certain charts.

Aus 4708 (INT 708) [737/2025]

Replace	chart note, HISTORIC WRECK WITH PROTECTED ZONE with accompanying chart note, HISTORIC WRECK WITH PROTECTED ZONE	33° 50'.0 S	116° 30'.0 E
---------	---	-------------	--------------

740 AUSTRALIA - VICTORIA - Ninety Mile Beach - Historic wreck eastwards

Australian Hydrographic Office

Aus 357 [696/2025]

Insert	depth, 101m, enclosed by danger circle	38° 07'.33 S	148° 43'.85 E
	restricted area circle with radius 800m, with magenta legend <i>Historic Wk with Protected Zone (see Note)</i> , centred on	38° 07'.33 S	148° 43'.85 E

741 SOLOMON ISLANDS - Honiara - Point Cruz - Lights

Solomon Islands Maritime Authority

SLB 101 (Lungga Roads) [698/2025]

Insert	light description, Fl. Y. 3s 5M	9° 25'.576 S	159° 57'.608 E
	light description, Fl. Y. 3s 5M	9° 25'.655 S	159° 57'.606 E

SLB 101 (Honiara) [698/2025]

Insert	light description, Fl. Y. 3s 5M	9° 25'.576 S	159° 57'.608 E
	light description, Fl. Y. 3s 5M	9° 25'.655 S	159° 57'.606 E

742(T)/2025 AUSTRALIA - NEW SOUTH WALES - Clarence River - Yamba - Light buoys
Port Authority of New South Wales Notice 1/2025

Lateral light buoys exist as follows:

<i>Position</i>	<i>Characteristics</i>
29° 25'.65 S 153° 21'.68 E	<i>Fl.R.3s</i>
29° 25'.71 S 153° 21'.48 E	<i>Fl.G.3s</i>
29° 25'.76 S 153° 21'.47 E	<i>Fl.R.3s.</i>

Chart temporarily affected - Aus 222

743(T)/2025 AUSTRALIA - QUEENSLAND - Abbot Point - Scientific instrument removed
Former Notice - 550(T)/2025 is cancelled
Maritime Safety Queensland Notice 262(T)/2025

Cancel this notice on receipt.

Chart formerly affected - Aus 255

744(T)/2025 AUSTRALIA - QUEENSLAND - Arlington Reef - Light buoy restored
Former Notice - 662(T)/2025 is cancelled
Maritime Safety Queensland

Cancel this notice on receipt.

Chart formerly affected - Aus 830

745(T)/2025 AUSTRALIA - QUEENSLAND - Capricorn Group - One Tree Island - Scientific instrument eastwards
Maritime Safety Queensland Notice 385(T)/2025

A special light buoy, *Fl(5)Y.20s*, exists in position 23° 28'.65 S 152° 12'.21 E.

Mariners are advised to navigate with caution in the area and not to use the buoy as a mooring.

Chart temporarily affected - Aus 490 - Aus 819

746(T)/2025 AUSTRALIA - QUEENSLAND - Gladstone - Harbour works
Maritime Safety Queensland Notice 362(T)/2025

Works associated with the construction of a reclamation bund wall are in progress in an area bounded by the following positions:

23° 47'.00 S 151° 08'.55 E
23° 47'.00 S 151° 09'.83 E
23° 45'.68 S 151° 09'.83 E
23° 45'.68 S 151° 09'.55 E.

The extremities of the construction area will be marked by a special light buoy, *Fl.Y.2-5s*.

Mariners are advised to navigate with caution in the area.

Chart temporarily affected - Aus 245 - Aus 819

747(T)/2025 AUSTRALIA - QUEENSLAND - Mackay - Wave glider operations completed eastwards
Former Notice - 610(T)/2025 is cancelled
Maritime Safety Queensland

Cancel this notice on receipt.

Chart formerly affected - Aus 249 - Aus 823 - Aus 824

748(T)/2025 AUSTRALIA - QUEENSLAND - Port Douglas - Island Point - Light sectors restored*Former Notice - 445(T)/2024 is cancelled*

Australian Maritime Safety Authority Auscoast Warning 172/2024

Cancel this notice on receipt.

Chart formerly affected - Aus 830**749(T)/2025 AUSTRALIA - QUEENSLAND - Townsville - Dredging operations; bed levelling operations completed***Former Notice - 552(T)/2025 is cancelled*

Maritime Safety Queensland Notice 273(T)/2025

Cancel this notice on receipt.

Chart formerly affected - Aus 256**750(T)/2025 PAPUA NEW GUINEA - New Ireland - Cape Sueusat - Light restored***Former Notice - 411(T)/2025 is cancelled*

National Maritime Safety Authority PNG Coastal Navigation Warning 2/2025

Cancel this notice on receipt.

Chart formerly affected - PNG 392 - PNG 393 - PNG 543 - PNG 666**751(T)/2025 AUSTRALIA - NORTHERN TERRITORY - Bing Bong - Light buoy off station; mooring buoys removed; mooring buoy established**

Nathan River

The special light buoy, *Fl(5)Y.20s* (15° 21'.82 S 136° 34'.76 E), is off station.The lit mooring buoys, *Fl.Y.3s* (15° 25'.64 S 136° 30'.60 E and 15° 21'.70 S 136° 33'.36 E), have been temporarily removed.

An unlit mooring buoy exists in position 15° 28'.78 S 136° 30'.26 E.

Mariners are advised to navigate with caution in the area.

Chart temporarily affected - Aus 710**752(T)/2025 AUSTRALIA - NORTHERN TERRITORY - Darwin - Mooring buoy restored***Former Notice - 893(T)/2023 is cancelled*

Australian Fisheries Management Authority

Cancel this notice on receipt.

Chart formerly affected - Aus 25**753(T)/2025 AUSTRALIA - NORTHERN TERRITORY - Darwin - Light buoy removed**

Northern Territory Government

The west cardinal light buoy, *Q(9)15s* (12° 30'.14 S 130° 53'.68 E), has been temporarily removed.**Chart temporarily affected - Aus 26**

754(T)/2025 AUSTRALIA - NORTHERN TERRITORY - Paxie Shoal to Charles Point Patches - Survey operations; tide gauges; obstructions

Cyan Renewables

Vessels *Riverside Guardian*, *Offshore Solution* and *Riverside Ranger* are conducting survey operations in an area bounded by the following positions:

11° 15'.00 S 133° 20'.00 E
 11° 15'.00 S 134° 19'.00 E
 11° 41'.00 S 134° 19'.00 E
 11° 41'.00 S 133° 20'.00 E.

Tide gauges marked by special light buoys exist in the following positions:

11° 32'.9 S 133° 20'.0 E
 11° 32'.2 S 133° 32'.7 E
 11° 31'.1 S 133° 39'.3 E
 11° 24'.3 S 133° 39'.3 E
 11° 15'.7 S 133° 39'.3 E
 11° 15'.7 S 133° 50'.7 E
 11° 22'.4 S 134° 04'.4 E
 11° 29'.1 S 134° 18'.3 E
 11° 33'.8 S 134° 18'.3 E
 11° 40'.8 S 134° 18'.3 E
 11° 38'.9 S 134° 08'.3 E
 11° 37'.2 S 133° 56'.7 E
 11° 35'.7 S 133° 45'.2 E
 11° 36'.2 S 133° 36'.3 E
 11° 35'.1 S 133° 28'.3 E
 11° 36'.7 S 133° 20'.8 E
 11° 27'.3 S 133° 52'.5 E
 11° 29'.5 S 133° 58'.7 E
 11° 30'.6 S 134° 05'.6 E.

Obstructions exist, 1m above the seabed, in positions 12° 19'.04 S 130° 41'.89 E and 12° 16'.31 S 130° 41'.27 E.

Mariners are advised to navigate with caution in the area. 0.5M clearance requested.

Chart temporarily affected - Aus 17 - Aus 25 - Aus 309 - Aus 718 - Aus 719

755(T)/2025 AUSTRALIA - NORTHERN TERRITORY - Van Cloon Shoal to Darwin - Survey operations

Northern Territory Government Notice 28(T)/2025, Notice 96(T)/2025

Uncrewed surface vessel *Fugro Kwilena* and support vessel *Total Response* are conducting survey operations adjacent to the existing pipeline between positions 12° 44'.93 S 126° 43'.28 E and 12° 32'.43 S 130° 52'.75 E.

Vessels will monitor VHF Ch 10 and Ch 16.

Mariners are advised to navigate with caution in the area.

Chart temporarily affected - Aus 25 - Aus 26 - Aus 309 - Aus 315 - Aus 316 - Aus 4603 (INT 603)

756(T)/2025 AUSTRALIA - TIMOR SEA - Vulcan Shoal - Drill rig northeastwards

Former Notice - 300(T)/2025 is cancelled

MODU *Valaris 247*

Cancel this notice on receipt.

Chart formerly affected - Aus 314 - Aus 319

757(T)/2025 AUSTRALIA - WESTERN AUSTRALIA - Bandy Creek Boat Harbour - Dredging operations completed

Former Notice - 301(T)/2025 is cancelled

Department of Transport WA Notice 6400/2025

Cancel this notice on receipt.

Chart formerly affected - Aus 119

758(T)/2025 AUSTRALIA - WESTERN AUSTRALIA - Dampier Archipelago - Drill rig northwestwards
 MODU *Ocean Apex*

Drill rig *Ocean Apex* is moored in position 20° 24'.52 S 116° 08'.68 E.

Chart temporarily affected - Aus 327 - Aus 742

759(T)/2025 AUSTRALIA - WESTERN AUSTRALIA - Lancelin to Garden Island - Military exercises
 Department of Defence

Surface and subsurface military exercises will be conducted from 25 August to 19 September 2025 in areas bounded by the following positions:

31° 03'.32 S 114° 58'.33 E
 30° 56'.92 S 115° 17'.60 E
 30° 49'.67 S 115° 13'.28 E
 30° 55'.20 S 114° 54'.75 E;
 and
 32° 16'.72 S 115° 16'.82 E
 32° 15'.53 S 115° 47'.17 E
 31° 46'.15 S 115° 43'.83 E
 31° 47'.10 S 115° 16'.12 E.

Non participants are required to maintain a minimum 500YDS safety distance from units operating AUVs and 1M from units undertaking diving activities to ensure compliance.

Mariners area advised to navigate with caution in the area.

Chart temporarily affected - Aus 112 - Aus 117 - Aus 753 - Aus 754 - Aus 755

760(T)/2025 AUSTRALIA - WESTERN AUSTRALIA - Legendre Island - Subsea operations completed northwards
Former Notice - 675(T)/2025 is cancelled
 Woodside Energy Ltd

Cancel this notice on receipt.

Chart formerly affected - Aus 327

761(T)/2025 AUSTRALIA - WESTERN AUSTRALIA - Montebello Islands - Subsea operations completed northwestwards

Former Notice - 677(T)/2025 is cancelled
 Woodside Energy Ltd

Cancel this notice on receipt.

Chart formerly affected - Aus 328 - Aus 742

762(T)/2025 AUSTRALIA - WESTERN AUSTRALIA - Montebello Islands - Drill rig moved westwards
Former Notice - 623(T)/2025 is cancelled
 MODU *Ocean Apex*

Cancel this notice on receipt.

Chart formerly affected - Aus 328 - Aus 329

763(T)/2025 AUSTRALIA - WESTERN AUSTRALIA - North West Cape - FPSO off station northwards
 Santos

The lit FPSO *Ningaloo Vision Mo(U)15s* (21° 24'.19 S 114° 05'.27 E) is off station; a direct turret mooring, with least depth 35m, exists in situ.

Chart temporarily affected - Aus 328 - Aus 329 - Aus 744 - Aus 4723 (INT 723)

764(T)/2025 AUSTRALIA - WESTERN AUSTRALIA - Port Geographe Marina - Dredging operations

Department of Transport WA Notice 6535/2025

The dredge *Cooper II* is conducting dredging operations at the entrance to the marina (33° 37'.74 S 115° 23'.38 E).

A floating and submerged pipeline exists from the dredge and is marked by special light buoys.

The dredge will display appropriate lights and shapes and will monitor VHF Ch 16, Marine 27 and MHz Ch 88.

Mariners are advised to contact the dredge if they are unsure where to safely pass.

Spoil will be deposited in the spoil ground (33° 37'.42 S 115° 23'.72 E) which is marked by special light buoys in the following positions:

33° 37'.45 S 115° 23'.50 E

33° 37'.37 S 115° 23'.67 E

33° 37'.37 S 115° 23'.88 E

33° 37'.46 S 115° 23'.88 E

33° 37'.46 S 115° 23'.61 E

33° 37'.49 S 115° 23'.56 E.

Mariners are advised to navigate with caution in the area and keep well clear.

Chart temporarily affected - Aus 116

765(T)/2025 AUSTRALIA - WESTERN AUSTRALIA - Thevenard Island to Muiron Islands - Subsea operations northwestwards

Former Notice - 880(T)/2024 is cancelled

Woodside Energy Ltd

On or about 25 August 2025, vessel *Deep Orient* will be conducting subsea structure recovery operations in the Griffin Field (21° 13'.4 S 114° 38'.7 E) and the Stybarrow Field (21° 24'.3 S 113° 51'.7 E).

Mariners are advised to navigate with caution in the area.

Chart temporarily affected - Aus 328 - Aus 329 - Aus 744

766(T)/2025 AUSTRALIA - VICTORIA - Port Campbell - Scientific instrument recovered southwards

Former Notice - 154(T)/2025 is cancelled

Bhagwan Marine

Cancel this notice on receipt.

Chart formerly affected - Aus 349

767(T)/2025 AUSTRALIA - VICTORIA - Western Port - North Arm - Scientific instruments recovered

Former Notice - 580(T)/2025 is cancelled

Parks Victoria Notice 409/2025

Cancel this notice on receipt.

Chart formerly affected - Aus 151

768(T)/2025 AUSTRALIA - TASMANIA - Moorland Point to Claytons Bay - Scientific instruments recovered northwards

Former Notice - 71(T)/2025 is cancelled

Marine and Safety Tasmania Notice M276/2025

Cancel this notice on receipt.

Chart formerly affected - Aus 164

II

HYDROGRAPHIC REPORTS

NIL

To accompany Australian Notice to Mariners 729/2025

HISTORIC WRECK WITH PROTECTED ZONE

This historic shipwreck lies within a protected or no entry zone as legislated by Commonwealth or State authorities. These zones may cover an area up to a radius of 800 metres from the designated wreck location. Entry into these protected zones requires a permit. For details see Mariners Handbook for Australian Waters AHP 20.

Note for chart Aus 825

To accompany Australian Notice to Mariners 735/2025

HISTORIC WRECK WITH PROTECTED ZONE

This historic shipwreck lies within a protected or no entry zone as legislated by Commonwealth or State authorities. These zones may cover an area up to a radius of 3200 metres from the designated wreck location. Entry into these protected zones requires a permit. For details see Mariners Handbook for Australian Waters AHP 20.

Note for chart Aus 4602

To accompany Australian Notice to Mariners 735/2025

HISTORIC WRECK WITH PROTECTED ZONE

This historic shipwreck lies within a protected or no entry zone as legislated by Commonwealth or State authorities. These zones may cover an area up to a radius of 3200 metres from the designated wreck location. Entry into these protected zones requires a permit. For details see Mariners Handbook for Australian Waters AHP 20.

Note for chart Aus 4604

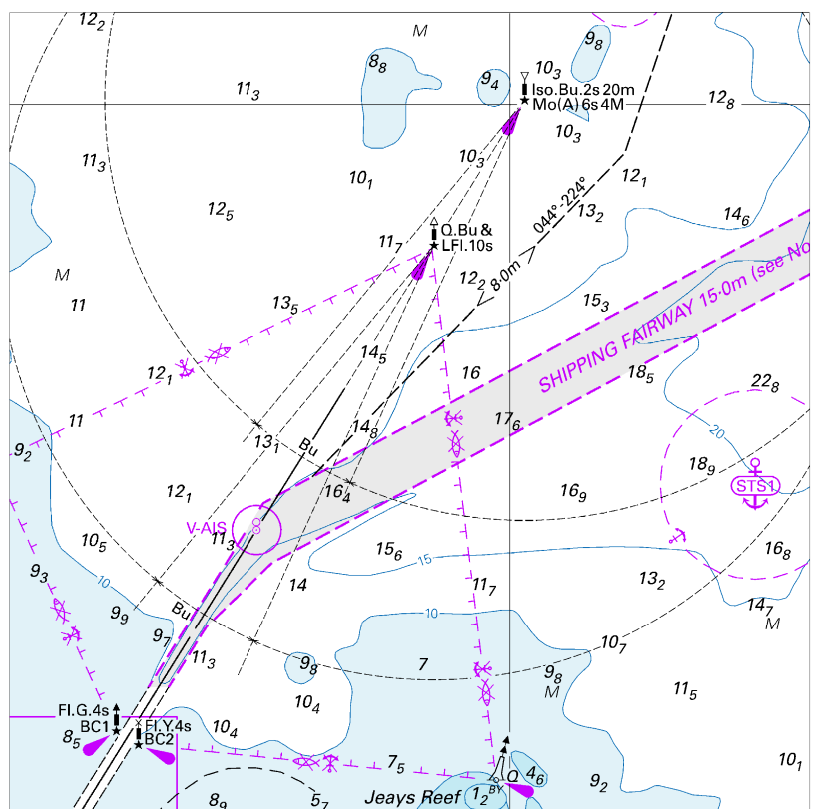
To accompany Australian Notice to Mariners 739/2025

HISTORIC WRECK WITH PROTECTED ZONE

This historic shipwreck lies within a protected or no entry zone as legislated by Commonwealth or State authorities. These zones may cover an area up to a radius of 3200 metres from the designated wreck location. Entry into these protected zones requires a permit. For details see Mariners Handbook for Australian Waters AHP 20.

Note for chart Aus 4708

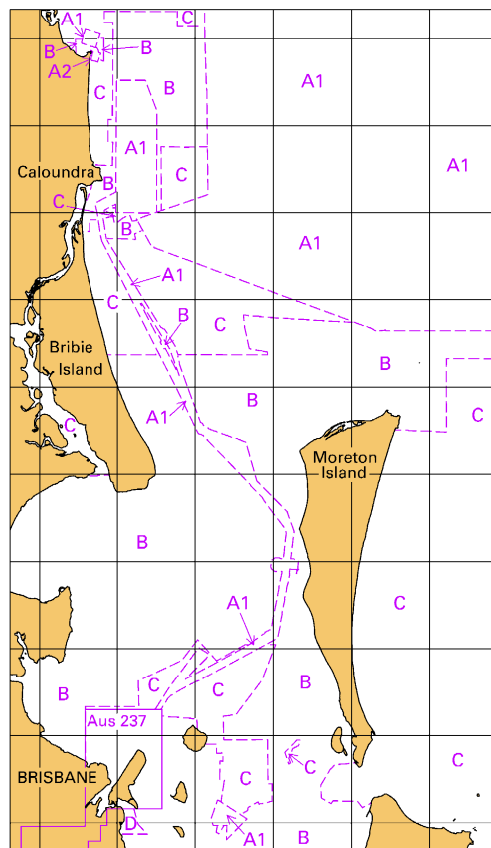
To accompany Australian Notice to Mariners 732/2025



Block for chart Aus 236 © Commonwealth of Australia 2025

(105.7 x 105.8mm)

To accompany Australian Notice to Mariners 732/2025

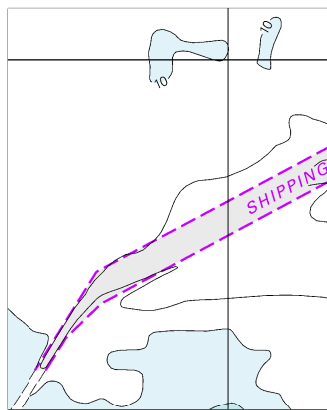


Block for chart Aus 236

(66.8 x 112.8mm)

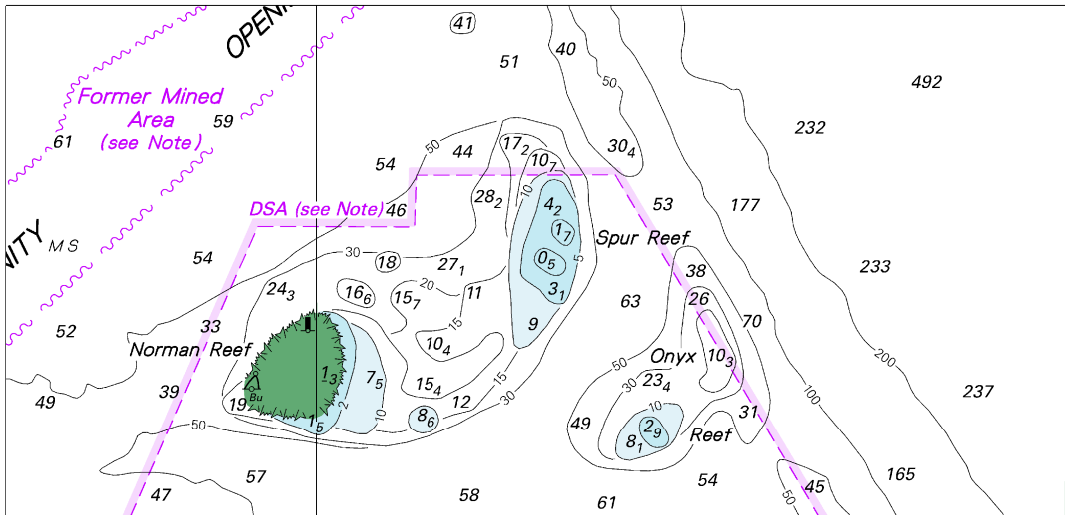
© Commonwealth of Australia 2025

To accompany Australian Notice to Mariners 732/2025



Block for chart Aus 814 (42.9 x 53.1mm)
© Commonwealth of Australia 2025

To accompany Australian Notice to Mariners 734/2025



Block for chart Aus 831

© Commonwealth of Australia 2025

(140.0 x 67.8mm)