



8 August 2025

Edition 16

# AUSTRALIAN NOTICES TO MARINERS

**Notices 688 - 724**

Published fortnightly by the Australian Hydrographic Office



Australian Notices to Mariners are the authority for correcting charts and publications published by the Australian Hydrographic Office covering Australia, Papua New Guinea, Solomon Islands, Australian Antarctic Territory and Timor-Leste.

Commodore R.L. PHILLIPS RAN  
*Hydrographer of Australia*

---

## SECTIONS.

- I. **Australian Notices to Mariners, including blocks and notes.**
- II. **Hydrographic Reports.**

## SUPPLEMENTS.

- I. **Tracings**
  - II. **Cumulative List of Australian Notices to Mariners.**
  - III. **Cumulative List of Temporary and Preliminary Australian Notices to Mariners.**
  - IV. **Temporary and Preliminary Notices in force.**
- 
- 

© Commonwealth of Australia 2025

This work is copyright. Apart from any use permitted under the Copyright Act 1968, no part may be reproduced by any process, adapted, communicated or commercially exploited without prior written permission from The Commonwealth represented by the Australian Hydrographic Office.

## IMPORTANT NOTICE

This edition of Notices to Mariners includes all significant information affecting AHO products which the AHO has become aware of since the last edition. All reasonable efforts have been made to ensure the accuracy and completeness of the information, including third party information, on which these updates are based. The AHO regards third parties from which it receives information as reliable, however the AHO cannot verify all such information and errors may therefore exist. The AHO does not accept liability for errors in third party information.

---

## GENERAL INSTRUCTIONS

The substance of these notices should be inserted on the charts affected.

Bearings are referred to the true compass and are reckoned clockwise from North; those relating to lights are given as seen by an observer from seaward.

Positions quoted in notices relate to WGS84 which is the horizontal datum for all charts produced by the Australian Hydrographic Office.

The range quoted for a light is its nominal range.

Depths are with reference to the chart datum of each chart. Heights are above mean high water springs or mean higher high water, as appropriate.

The capital letter (P) or (T) after the number of any notice denotes a preliminary or temporary notice respectively, which are contained separately at the end of the permanent notices.

---

## REPORTING OF DANGERS

Mariners are particularly requested to notify the AUSTRALIAN HYDROGRAPHIC OFFICE, Locked Bag 8801 Wollongong, NSW 2500 (e-mail [datacentre@hydro.gov.au](mailto:datacentre@hydro.gov.au) or, alternatively by filling in and submitting the [Hydrographic Notes](#) forms located on the web site – [www.hydro.gov.au](http://www.hydro.gov.au)), immediately on the discovery of new dangers or suspected dangers to navigation. For changes or defects in aids to navigation notify AusSAR (Fax 02-6230 6868 or email [rccaus@amsa.gov.au](mailto:rccaus@amsa.gov.au)).

---

## AUTHORISED USE

Copies of Australian notices are available free of charge from the Australian Hydrographic Office (AHO) website ([www.hydro.gov.au](http://www.hydro.gov.au)) and through the eNotices (email) service ([www.hydro.gov.au/enotices/enotices.htm](http://www.hydro.gov.au/enotices/enotices.htm)).

Individual Notices may be copied for the purpose of inserting Notice substance on official charts and publications. Paper copies may be printed by chart agents and distributed to customers on a cost recovery basis. Participating chart agents are listed on the AHO website as providing a 'Paper Notices to Mariners' service ([www.hydro.gov.au/prodserv/agents-list.htm](http://www.hydro.gov.au/prodserv/agents-list.htm)). Copies of the notices may not be sold for profit without prior written agreement.

## NUMERICAL INDEX OF NOTICES TO MARINERS

### Edition No 16

Notices	Aus Chart, INT Chart, ENC Cell, AHP, BA Pubs
688	Aus 827, 828, 829, 830
689	Products - New Charts and New Editions to be published shortly
690	Aus 262
691	Aus 717
692	Aus 65
693	Aus 118
694	Aus 116
695	Aus 337
696	Aus 357, 487
697	Aus 143, 155
698	SLB 101
699(T)	Aus 811
700(T)	Aus 255, 268, 825, 826, 4602, 4603, 4604, INT 602, 603, 604
701(T)	Aus 255, 825, 826, 827
702(T)	Aus 237
703(T)	Aus 255, 258, 260, 268, 822, 825, 826, 829
704(T)	Aus 236, 815
705(T)	Aus 245
706(T)	Aus 615, 829, 4602, 4603, 4604, INT 602, 603, 604
707(T)	Aus 833, 834
708(T)	Aus 236, 814, 815
709(T)	Aus 236
710(T)	Aus 20, 25, 26, 309, 314, 315, 316, 318, 319, 322, 728, 4603, 4722, INT 603, 722
711(T)	Aus 319, 320, 322
712(T)	Aus 112, 335, 336, 754, 755
713(T)	Aus 331
714(T)	Aus 55, 57, 326, 327
715(T)	Aus 81
716(T)	Aus 319
717(T)	Aus 65, 327, 742
718(T)	Aus 53
719(T)	Aus 53
720(T)	Aus 53
721(T)	Aus 357, 487
722(T)	Aus 349
723(T)	Aus 144
724(T)	Aus 767

## NUMERICAL INDEX OF CHARTS AFFECTED

### Edition No 16

Aus Chart	Notices
Aus 20	710(T)
Aus 25	710(T)
Aus 26	710(T)
Aus 53	718(T), 719(T), 720(T)
Aus 55	714(T)
Aus 57	714(T)
Aus 65	692, 717(T)
Aus 81	715(T)
Aus 112	712(T)
Aus 116	694
Aus 118	693
Aus 143	697
Aus 144	723(T)
Aus 155	697
Aus 236	704(T), 708(T), 709(T)
Aus 237	702(T)
Aus 245	705(T)
Aus 255	700(T), 701(T), 703(T)
Aus 258	703(T)
Aus 260	703(T)
Aus 262	690
Aus 268	700(T), 703(T)
Aus 309	710(T)
Aus 314	710(T)
Aus 315	710(T)
Aus 316	710(T)
Aus 318	710(T)
Aus 319	710(T), 711(T), 716(T)
Aus 320	711(T)
Aus 322	710(T), 711(T)
Aus 326	714(T)
Aus 327	714(T), 717(T)
Aus 331	713(T)
Aus 335	712(T)
Aus 336	712(T)
Aus 337	695
Aus 349	722(T)
Aus 357	696, 721(T)
Aus 487	696, 721(T)
Aus 615	706(T)
Aus 717	691
Aus 728	710(T)
Aus 742	717(T)
Aus 754	712(T)
Aus 755	712(T)
Aus 767	724(T)
Aus 811	699(T)
Aus 814	708(T)
Aus 815	704(T), 708(T)
Aus 822	703(T)
Aus 825	700(T), 701(T), 703(T)
Aus 826	700(T), 701(T), 703(T)
Aus 827	688, 701(T)
Aus 828	688

Aus Chart	Notices
Aus 829	688, 703(T), 706(T)
Aus 830	688
Aus 833	707(T)
Aus 834	707(T)
Aus 4602	700(T), 706(T)
Aus 4603	700(T), 706(T), 710(T)
Aus 4604	700(T), 706(T)
Aus 4722	710(T)
SLB 101	698

INT Chart	Notices
INT 602	700(T), 706(T)
INT 603	700(T), 706(T), 710(T)
INT 604	700(T), 706(T)
INT 722	710(T)

**688 AUSTRALIA - Products - New Charts, New Editions, Withdrawn Charts**

Australian Hydrographic Office , UKHO

**New Charts**

Chart	Title and Geographical limits	Scale	Publication Date	Remarks
NIL				

**New Electronic Navigation Chart (Aus ENC)**

Cell Name	Title	Publication Date	Remarks
NIL			

**New Editions and Withdrawn Charts**

Chart	Title	Scale	Publication Date	Remarks
Aus 827 (Edition 4)	Australia - East Coast - Queensland - Cape Bowling Green to Palm Isles	1:150 000	8/8/2025	New edition with general updating throughout; including latest bathymetric data. <b>Chart Aus 827 Edition 3 dated 4 Jul 2014 is now superseded and must be withdrawn from use.</b>
Aus 828 (Edition 3)	Australia - East Coast - Queensland - Palm Isles to Brook Islands and Palm Passage	1:150 000	8/8/2025	New edition with general updating throughout; including latest bathymetric data. <b>Chart Aus 828 Edition 2 dated 4 Jul 2014 is now superseded and must be withdrawn from use.</b>
Aus 829 (Edition 3)	Australia - East Coast - Queensland - Brook Islands to Russell Island	1:150 000	8/8/2025	New edition with general updating throughout; including latest bathymetric data. <b>Chart Aus 829 Edition 2 dated 31 Jul 2015 is now superseded and must be withdrawn from use.</b>
Aus 830 (Edition 4)	Australia - East Coast - Queensland - Russell Island to Low Isles	1:150 000	8/8/2025	New edition with general updating throughout; including latest bathymetric data. <b>Chart Aus 830 Edition 3 dated 15 Aug 2014 is now superseded and must be withdrawn from use.</b>

**Admiralty publication**

NP No	Title	Date	Remarks
NP15 & e-NP15	ADMIRALTY Sailing Directions Australia Pilot Volume 3 16th Edition 2025	14/8/2025	The 15th Edition (2022) is cancelled.
NP285	ADMIRALTY List of Radio Signals Global Maritime Distress and Safety System (GMDSS) NP285 Volume 5 6th Edition 2025	7/8/2024	The 5th Edition (2024) is cancelled.

**688 AUSTRALIA - Products - New Charts, New Editions, Withdrawn Charts**
**Chart permanently withdrawn**

Charts listed above as withdrawn no longer meet chart carriage requirements and should be marked as "superseded" and replaced with the new chart/ new edition listed prior to passage through the area covered by the new chart.

When placing orders with a chart agent between notice of forthcoming edition and its publication, mariners should advise whether their order pertains to the current edition or the new edition.

For further details refer to the AHO website at [www.hydro.gov.au](http://www.hydro.gov.au) for new edition and new chart stock arrival information.

**689 AUSTRALIA - Products - New Charts and New Editions to be published shortly**

Australian Hydrographic Office

**New Charts to be published shortly**

<i>Chart</i>	<i>Title</i>	<i>Scale</i>	<i>Remarks</i>
NIL			

**New Editions to be published shortly**

<i>Chart</i>	<i>Title</i>	<i>Scale</i>	<i>Remarks</i>
NIL			

**690 AUSTRALIA - QUEENSLAND - Yorkeys Point - Depths**

Cairns Regional Council

**Aus 262 [533/2025]**

Insert	<a href="#">accompanying block</a>	16° 47'.8 S	145° 43'.1 E
--------	------------------------------------	-------------	--------------

**691 AUSTRALIA - NORTHERN TERRITORY - Cadell Strait to Cape Stewart - ZOC diagram**

Australian Hydrographic Office

**Aus 717 [553/2023]**

Amend	magenta legend to C	12° 21'.4 S	134° 40'.1 E
-------	---------------------	-------------	--------------

**692 AUSTRALIA - WESTERN AUSTRALIA - Barrow Island - Wapet Landing - Depths**

Australian Hydrographic Office

**Aus 65 [57/2024]**

Insert	<a href="#">accompanying block</a>	20° 43'.7 S	115° 29'.5 E
--------	------------------------------------	-------------	--------------

**693 AUSTRALIA - WESTERN AUSTRALIA - King George Sound - Middleton Bay - Artificial reef**

Former Notice - 265(T)/2025 is cancelled

Department of Transport WA Notice WA1083/24/2025

**Aus 118 [596/2025]**

Insert	danger circle with legend, <i>Obstrn</i> , centred on	35° 01'.07 S	117° 55'.26 E
--------	---	--------------	---------------

Delete	depth, 2 <sub>5</sub> m	35° 01'.1 S	117° 55'.2 E
--------	-------------------------	-------------	--------------

**694 AUSTRALIA - WESTERN AUSTRALIA - Mary Ann Haven - Depths**

Department of Transport WA

**Aus 116 (Mary Ann Haven) [401/2025]**

Insert	contour, between	33° 57'.725 S	120° 08'.051 E
		33° 57'.791 S	120° 07'.839 E
		33° 57'.850 S	120° 07'.844 E
		33° 57'.967 S	120° 08'.017 E
		33° 57'.861 S	120° 08'.047 E
	depth, 1 <sub>7</sub> m, enclosed by contour	33° 57'.342 S	120° 07'.793 E
	depth, 0 <sub>2</sub> m	33° 57'.779 S	120° 07'.921 E
	depth, 3 <sub>6</sub> m, and extend contour NW to enclose	33° 58'.017 S	120° 08'.098 E
Replace	depth, 1m, with depth, 0 <sub>4</sub> m	33° 57'.30 S	120° 07'.66 E
	depth, 1 <sub>4</sub> m, with depth, 0 <sub>6</sub> m	33° 57'.53 S	120° 07'.54 E
	depth, 1 <sub>6</sub> m, with depth, 1 <sub>6</sub> m	33° 57'.88 S	120° 08'.01 E
Delete	contour, between	33° 57'.73 S	120° 08'.05 E
		33° 57'.86 S	120° 08'.05 E
	depth, 2 <sub>4</sub> m	33° 57'.31 S	120° 07'.80 E
	depth, 2 <sub>1</sub> m	33° 57'.80 S	120° 07'.85 E
	depth, 2 <sub>6</sub> m	33° 57'.83 S	120° 07'.95 E
	depth, 4m	33° 58'.03 S	120° 08'.10 E

**695 AUSTRALIA - WESTERN AUSTRALIA - Point Ann - Depths**

Department of Transport WA

**Aus 337 [595/2025]**

Insert	depth, 20 <sub>8</sub> m, enclosed by contour	34° 12'.84 S	119° 40'.99 E
	depth, 22 <sub>4</sub> m, enclosed by contour	34° 13'.10 S	119° 35'.19 E
Replace	depth, 22 <sub>2</sub> m, with depth, 18 <sub>9</sub> m	34° 12'.5 S	119° 37'.3 E
	depth, 29 <sub>2</sub> m, with depth, 21 <sub>6</sub> m	34° 13'.5 S	119° 36'.3 E
Delete	depth, 37m	34° 13'.1 S	119° 40'.6 E

**696 AUSTRALIA - VICTORIA - Ninety Mile Beach - Wreck southwards***Former Notice - 461(T)/2025 is cancelled*

Australian Maritime Safety Authority

**Aus 357 [249/2025]**

Insert	safe clearance depth, 12m, enclosed by danger circle with legend, <i>Wk Rep (2025)</i>	38° 34'.60 S	147° 06'.53 E
--------	--	--------------	---------------

**Aus 487 [600/2025]**

Insert	safe clearance depth, 12m, enclosed by danger circle with legend, <i>Wk Rep (2025)</i>	38° 34'.60 S	147° 06'.53 E
--------	--	--------------	---------------

**697 AUSTRALIA - VICTORIA - Port Phillip - Beaumaris Bay - Light**

Parks Victoria Notice 387/2025

**Aus 143 [659/2025]**

Delete	light	37° 59'.4 S	145° 02'.7 E
--------	-------	-------------	--------------

**Aus 155 [658/2025]**

Delete	light	37° 59'.42 S	145° 02'.67 E
--------	-------	--------------	---------------

**698 SOLOMON ISLANDS - Lungga Roads - Kukum - Buoy**

Solomon Islands Maritime Authority

**SLB 101 (Lungga Roads) [602/2025]**

Delete	buoy	9° 25'.78 S	159° 59'.24 E
--------	------	-------------	---------------

**699(T)/2025 AUSTRALIA - NEW SOUTH WALES - Point Perpendicular - Fish aggregating device recovered eastwards**

*Former Notice* - 861(T)/2024 is cancelled

Department of Primary Industries and Regional Development

Cancel this notice on receipt.

**Chart formerly affected - Aus 811**

**700(T)/2025 AUSTRALIA - QUEENSLAND - Abbot Point - Space launch complete northeastwards**

*Former Notice* - 661(T)/2025 is cancelled

Australian Maritime Safety Authority , Maritime Safety Queensland

Cancel this notice on receipt.

**Chart formerly affected - Aus 255 - Aus 268 - Aus 825 - Aus 826 - Aus 4602 (INT 602) - Aus 4603 (INT 603) - Aus 4604 (INT 604)**

**701(T)/2025 AUSTRALIA - QUEENSLAND - Abbot Point - Survey operations; tide gauges northwards**

*Former Notice* - 493(T)/2025 is cancelled

Maritime Safety Queensland Notice 229(T)/2025

An unmanned survey vessel (USV) is conducting survey operations in an area bounded by the following positions:

19° 20'.43 S 147° 56'.38 E  
 19° 36'.78 S 148° 31'.24 E  
 19° 44'.96 S 148° 11'.89 E  
 19° 42'.13 S 147° 59'.05 E  
 19° 48'.14 S 148° 00'.12 E  
 19° 38'.93 S 147° 50'.12 E  
 19° 25'.85 S 147° 51'.32 E.

Tide gauges marked by special light buoys, *Fl. Y. 2s*, exist in the following positions:

19° 52'.9 S 148° 05'.1 E  
 19° 44'.5 S 148° 18'.8 E  
 19° 37'.1 S 148° 33'.7 E  
 19° 32'.3 S 148° 20'.8 E  
 19° 27'.7 S 148° 09'.5 E  
 19° 19'.0 S 147° 56'.3 E  
 19° 28'.9 S 147° 45'.5 E  
 19° 39'.0 S 147° 47'.2 E  
 19° 46'.4 S 147° 55'.8 E  
 19° 34'.2 S 147° 59'.3 E  
 19° 38'.8 S 148° 09'.7 E.

Mariners are advised to navigate with caution in the area.

**Chart temporarily affected - Aus 255 - Aus 825 - Aus 826 - Aus 827**

**702(T)/2025 AUSTRALIA - QUEENSLAND - Brisbane River - Hamilton Reach - Light buoys removed; harbour works completed**

*Former Notice* - 862(T)/2024 is cancelled

Maritime Safety Queensland

Cancel this notice on receipt.

**Chart formerly affected - Aus 237**

**703(T)/2025 AUSTRALIA - QUEENSLAND - Broad Sound Channel to Cowley Beach - Military exercise completed**

*Former Notice* - 605(T)/2025 is cancelled

Department of Defence , Maritime Safety Queensland

Cancel this notice on receipt.

**Chart formerly affected - Aus 255 - Aus 258 - Aus 260 - Aus 268 - Aus 822 - Aus 825 - Aus 826 - Aus 829**



**704(T)/2025 AUSTRALIA - QUEENSLAND - Caloundra Head - Light restored**

*Former Notice* - 398(T)/2023 is cancelled  
Maritime Safety Queensland

Cancel this notice on receipt.

**Chart formerly affected - Aus 236 - Aus 815**

**705(T)/2025 AUSTRALIA - QUEENSLAND - Gladstone - North Passage Island - Scientific instrument recovered**

*Former Notice* - 439(T)/2025 is cancelled  
Maritime Safety Queensland Notice 259(T)/2025

Cancel this notice on receipt.

**Chart formerly affected - Aus 245**

**706(T)/2025 AUSTRALIA - QUEENSLAND - Great Barrier Reef - Hydrographers Passage to Holmes Reefs - Survey operations completed**

*Former Notice* - 780(T)/2024 is cancelled  
EGS Survey Pty Ltd

Cancel this notice on receipt.

**Chart formerly affected - Aus 615 - Aus 829 - Aus 4602 (INT 602) - Aus 4603 (INT 603) - Aus 4604 (INT 604)**

**707(T)/2025 AUSTRALIA - QUEENSLAND - Magpie Reef - Light restored**

*Former Notice* - 409(T)/2025 is cancelled  
Australian Maritime Safety Authority Final ATH 10/2025

Cancel this notice on receipt.

**Chart formerly affected - Aus 833 - Aus 834**

**708(T)/2025 AUSTRALIA - QUEENSLAND - Moreton Bay - North East Channel - Light buoy restored**

*Former Notice* - 561(T)/2024 is cancelled  
Maritime Safety Queensland

Cancel this notice on receipt.

**Chart formerly affected - Aus 236 - Aus 814 - Aus 815**

**709(T)/2025 AUSTRALIA - QUEENSLAND - Moreton Bay - Redcliffe - Light buoy relit**

*Former Notice* - 946(T)/2022 is cancelled  
Maritime Safety Queensland

Cancel this notice on receipt.

**Chart formerly affected - Aus 236**

**710(T)/2025 AUSTRALIA - NORTHERN TERRITORY - WESTERN AUSTRALIA - Darwin to Seringapatam Reef - Geotechnical and geophysical operations westwards**

EGS Survey Pty Ltd

On or about 12 August 2025, vessel *PMG Emerald*, with a 1500m towed array, will be conducting geotechnical and geophysical survey operations in an area bounded by the following positions:

13° 57'.28 S 121° 19'.99 E  
 12° 35'.87 S 130° 52'.26 E  
 12° 02'.71 S 130° 52'.26 E  
 12° 40'.83 S 121° 22'.37 E.

The vessel will display appropriate lights and shapes and will monitor VHF Ch 16.

Mariners are advised to navigate with caution in the area.

**Chart temporarily affected - Aus 20 - Aus 25 - Aus 26 - Aus 309 - Aus 314 - Aus 315 - Aus 316 - Aus 318 - Aus 319 - Aus 322 - Aus 728 - Aus 4603 (INT 603) - Aus 4722 (INT 722)**

**711(T)/2025 AUSTRALIA - WESTERN AUSTRALIA - Browse Island - Subsea operations completed northwestwards**

*Former Notice - 672(T)/2025 is cancelled*

McDermott Australia , Australian Maritime Safety Authority

Cancel this notice on receipt.

**Chart formerly affected - Aus 319 - Aus 320 - Aus 322**

**712(T)/2025 AUSTRALIA - WESTERN AUSTRALIA - Cape Naturaliste - Geotechnical and geophysical operations completed westwards**

*Former Notice - 494(T)/2025 is cancelled*

EGS Survey Pty Ltd

Cancel this notice on receipt.

**Chart formerly affected - Aus 112 - Aus 335 - Aus 336 - Aus 754 - Aus 755**

**713(T)/2025 AUSTRALIA - WESTERN AUSTRALIA - Carnarvon - Artificial reef southwestwards**

Department of Transport WA Notice 6526/2025

Vessels *Shaw II* and *Cape Arid* are conducting works to establish an artificial reef in the vicinity of position 24° 55'.80 S 113° 34'.50 E.

Mariners are advised to navigate with caution in the area.

**Chart temporarily affected - Aus 331**

**714(T)/2025 AUSTRALIA - WESTERN AUSTRALIA - Delambre Island - Survey operations eastwards**

Former Notice - 674(T)/2025 is cancelled

Discovery Marine

Survey vessel *Outer Limit* is conducting survey operations in an area bounded by the following positions:

20° 17'.32 S 116° 50'.01 E  
 20° 14'.66 S 117° 14'.66 E  
 20° 14'.66 S 117° 33'.80 E  
 20° 25'.55 S 117° 29'.95 E  
 20° 25'.56 S 116° 58'.24 E  
 20° 21'.73 S 116° 50'.00 E.

Tide gauges marked by special light buoys, *Fl. Y. 2s*, exist in the following positions:

20° 17'.22 S 116° 49'.74 E  
 20° 17'.21 S 117° 03'.74 E  
 20° 17'.10 S 117° 13'.04 E  
 20° 14'.50 S 117° 22'.65 E  
 20° 14'.58 S 117° 33'.95 E  
 20° 22'.68 S 117° 31'.05 E  
 20° 23'.70 S 117° 22'.88 E  
 20° 23'.81 S 117° 12'.89 E  
 20° 25'.35 S 117° 04'.30 E  
 20° 24'.49 S 116° 58'.05 E  
 20° 20'.92 S 116° 50'.42 E.

Mariners are advised to navigate with caution in the area.

**Chart temporarily affected - Aus 55 - Aus 57 - Aus 326 - Aus 327**

**715(T)/2025 AUSTRALIA - WESTERN AUSTRALIA - Geraldton - Scientific instruments**

Mid West Ports Notice 11/2025

Subsurface scientific instruments exist on the seabed in positions 28° 45'.67 S 114° 36'.21 E and 28° 46'.23 S 114° 36'.30 E.

Mariners are advised to navigate with caution in the area.

**Chart temporarily affected - Aus 81**

**716(T)/2025 AUSTRALIA - WESTERN AUSTRALIA - Goeree Shoal - Scientific instrument southeastwards**

UKHO

A special light buoy, *Fl. Y. 4s*, exists in position 12° 59'.31 S 124° 25'.61 E.

Mariners are advised to navigate with caution in the area.

**Chart temporarily affected - Aus 319**

**717(T)/2025 AUSTRALIA - WESTERN AUSTRALIA - Lowendal Islands - Varanus Island - Subsea operations northeastwards**

McDermott Australia , Santos

On or about 12 August 2025, vessel *LV108* and support vessels will be conducting subsea operations in the vicinity of positions:

20° 36'.13 S 115° 36'.84 E  
 20° 32'.84 S 115° 36'.28 E  
 20° 38'.20 S 115° 43'.65 E.

Mariners are advised to navigate with caution in the area. 2·5M clearance requested.

**Chart temporarily affected - Aus 65 - Aus 327 - Aus 742**

**718(T)/2025 AUSTRALIA - WESTERN AUSTRALIA - Port Hedland - Light buoy removed**  
Pilbara Ports Authority Notice PH10/2025

The special light buoy, *Fl(5)Y.20s* (20° 10'.66 S 118° 30'.24 E), has been removed; an orange buoy exists in situ.

Mariners are advised to refrain from entering the immediate area.

**Chart temporarily affected - Aus 53**

**719(T)/2025 AUSTRALIA - WESTERN AUSTRALIA - Port Hedland - Light buoy relit**  
*Former Notice - 627(T)/2025 is cancelled*  
Pilbara Ports Authority Notice PH8/2025

Cancel this notice on receipt.

**Chart formerly affected - Aus 53**

**720(T)/2025 AUSTRALIA - WESTERN AUSTRALIA - Port Hedland - Light beacons restored**  
*Former Notice - 263(T)/2024 is cancelled*  
Pilbara Ports Authority Notice PH4/2024

Cancel this notice on receipt.

**Chart formerly affected - Aus 53**

**721(T)/2025 AUSTRALIA - VICTORIA - Ninety Mile Beach - Scientific instruments southwards**  
ERM

Subsurface scientific instruments, 1.5m above seabed, exist in the following positions:

38° 41'.37 S 147° 12'.82 E  
38° 28'.37 S 147° 18'.00 E  
38° 47'.19 S 147° 25'.73 E  
38° 38'.10 S 147° 30'.75 E  
38° 41'.08 S 147° 48'.67 E.

Mariners are advised to navigate with caution in the area.

**Chart temporarily affected - Aus 357 - Aus 487**

**722(T)/2025 AUSTRALIA - VICTORIA - Port Campbell - Mooring buoys removed southwards**  
*Former Notice - 508(T)/2025 is cancelled*  
Australian Maritime Safety Authority

Cancel this notice on receipt.

**Chart formerly affected - Aus 349**

**723(T)/2025 AUSTRALIA - VICTORIA - Port Phillip - Point Nepean - Light buoy off station**  
Parks Victoria Notice 390(T)/2025

The special light buoy, *Fl.Y.5s* (38° 17'.95 S 144° 39'.14 E), is off station.

Mariners are advised to navigate with caution in the area.

**Chart temporarily affected - Aus 144**

**724(T)/2025 AUSTRALIA - TASMANIA - Ansons Bay - Beacon destroyed**  
Marine and Safety Tasmania Notice M264(T)/2025

The beacon (41° 03'.75 S 148° 17'.91 E) has been destroyed.

Mariners are advised to navigate with caution in the area.

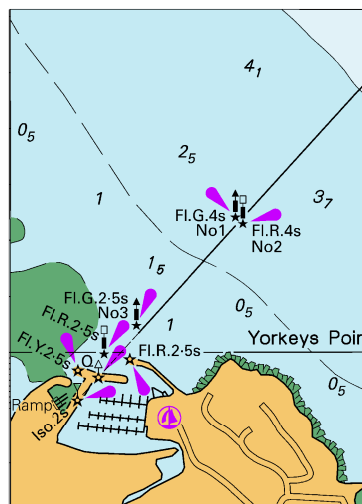
**Chart temporarily affected - Aus 767**

II

**HYDROGRAPHIC REPORTS**

NIL

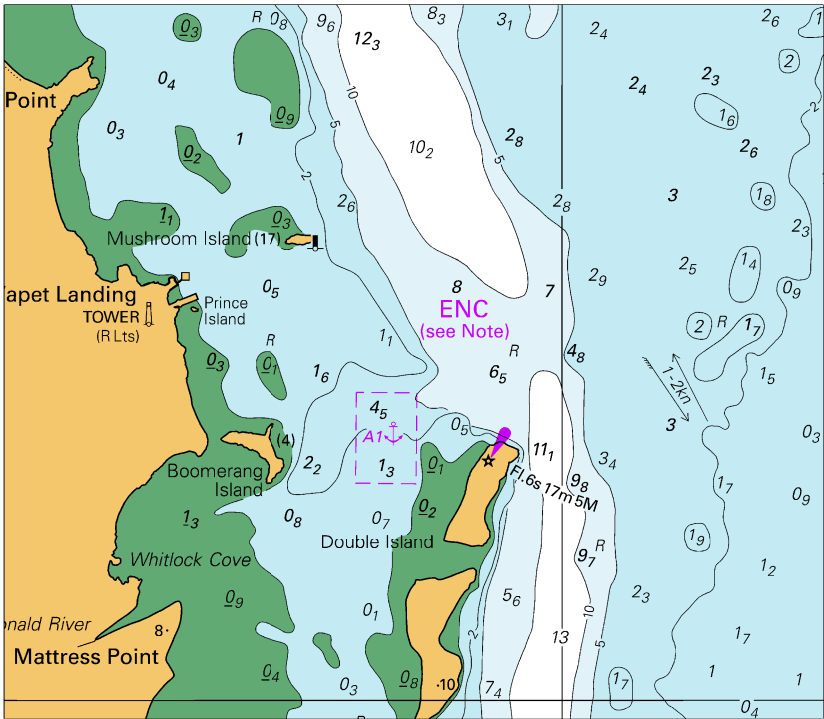
To accompany Australian Notice to Mariners 690/2025



Block for chart Aus 262 (47.6 x 66.2mm)

© Commonwealth of Australia 2025

*To accompany Australian Notice to Mariners 692/2025*



Block for chart Aus65 © Commonwealth of Australia 2025

(108.3 x 94.3mm)