



27 June 2025

Edition 13

AUSTRALIAN NOTICES TO MARINERS

Notices 521 - 581

Published fortnightly by the Australian Hydrographic Office



Australian Notices to Mariners are the authority for correcting charts and publications published by the Australian Hydrographic Office covering Australia, Papua New Guinea, Solomon Islands, Australian Antarctic Territory and Timor-Leste.

Commodore R.L. PHILLIPS RAN
Hydrographer of Australia

SECTIONS.

- I. **Australian Notices to Mariners, including blocks and notes.**
- II. **Hydrographic Reports.**

SUPPLEMENTS.

- I. **Tracings**
- II. **Cumulative List of Australian Notices to Mariners.**
- III. **Cumulative List of Temporary and Preliminary Australian Notices to Mariners.**
- IV. **Temporary and Preliminary Notices in force.**

© Commonwealth of Australia 2025

This work is copyright. Apart from any use permitted under the Copyright Act 1968, no part may be reproduced by any process, adapted, communicated or commercially exploited without prior written permission from The Commonwealth represented by the Australian Hydrographic Office.

IMPORTANT NOTICE

This edition of Notices to Mariners includes all significant information affecting AHO products which the AHO has become aware of since the last edition. All reasonable efforts have been made to ensure the accuracy and completeness of the information, including third party information, on which these updates are based. The AHO regards third parties from which it receives information as reliable, however the AHO cannot verify all such information and errors may therefore exist. The AHO does not accept liability for errors in third party information.

GENERAL INSTRUCTIONS

The substance of these notices should be inserted on the charts affected.

Bearings are referred to the true compass and are reckoned clockwise from North; those relating to lights are given as seen by an observer from seaward.

Positions quoted in notices relate to WGS84 which is the horizontal datum for all charts produced by the Australian Hydrographic Office.

The range quoted for a light is its nominal range.

Depths are with reference to the chart datum of each chart. Heights are above mean high water springs or mean higher high water, as appropriate.

The capital letter (P) or (T) after the number of any notice denotes a preliminary or temporary notice respectively, which are contained separately at the end of the permanent notices.

REPORTING OF DANGERS

Mariners are particularly requested to notify the AUSTRALIAN HYDROGRAPHIC OFFICE, Locked Bag 8801 Wollongong, NSW 2500 (e-mail datacentre@hydro.gov.au or, alternatively by filling in and submitting the [Hydrographic Notes](#) forms located on the web site – www.hydro.gov.au), immediately on the discovery of new dangers or suspected dangers to navigation. For changes or defects in aids to navigation notify AusSAR (Fax 02-6230 6868 or email rccaus@amsa.gov.au).

AUTHORISED USE

Copies of Australian notices are available free of charge from the Australian Hydrographic Office (AHO) website (www.hydro.gov.au) and through the eNotices (email) service (www.hydro.gov.au/enotices/enotices.htm).

Individual Notices may be copied for the purpose of inserting Notice substance on official charts and publications. Paper copies may be printed by chart agents and distributed to customers on a cost recovery basis. Participating chart agents are listed on the AHO website as providing a 'Paper Notices to Mariners' service (www.hydro.gov.au/prodserv/agents-list.htm). Copies of the notices may not be sold for profit without prior written agreement.

NUMERICAL INDEX OF NOTICES TO MARINERS

Edition No 13

Notices	Aus Chart, INT Chart, ENC Cell, AHP, BA Pubs
521	Products - New Charts, New Editions, Withdrawn Charts
522	Aus 81
523	Aus 808
524	Aus 195, 200, 207, 489, 807, 808, 809
525	Aus 4060, 4602, 4604, INT 60, 602, 604
526	Aus 242
527	Aus 490, 819
528	Aus 245
529	Aus 815
530	Aus 254
531	Aus 252
532	Aus 6
533	Aus 236, 262, 612, 616, 814, 819, 830, 835
534	Aus 4604, INT 604, PNG 507
535	PNG 379, 647
536	PNG 508, 625
537	Aus 4604, 4622, INT 604, 622, PNG 545, 554, 680
538	PNG 379, 505, 621
539	Aus 299
540	Aus 839, 840, 841
541	Aus 754
542	Aus 320, 728, 729
543	Aus 607
544	Aus 130
545	Aus 778
546	Aus 143, 144, 151, 349, 801
547	Aus 349
548	Aus 143, 155
549(T)	Aus 489, 808, 4601, 4602, INT 601, 602
550(T)	Aus 255
551(T)	Aus 236
552(T)	Aus 256
553(T)	PNG 379, 647
554(T)	Aus 625, PNG 508
555(T)	Aus 15
556(T)	Aus 50
557(T)	Aus 763
558(T)	Aus 117
559(T)	Aus 755, 4708, 4709, 4710, INT 708, 709, 710
560(P)	Aus 116, 337
561(T)	Aus 328
562(T)	Aus 118
563(T)	Aus 327
564(T)	Aus 754
565(T)	Aus 485, 781
566(T)	Aus 357
567(T)	Aus 349
568(T)	Aus 155
569(T)	Aus 157
570(T)	Aus 157
571(T)	Aus 157
572(T)	Aus 155
573(T)	Aus 143, 144
574(T)	Aus 143, 144, 155, 157
575(T)	Aus 157
576(T)	Aus 157
577(T)	Aus 144
578(T)	Aus 143, 157
579(T)	Aus 349
580(T)	Aus 151
581(T)	Aus 151

NUMERICAL INDEX OF CHARTS AFFECTED

Edition No 13

Aus Chart	Notices
Aus 6	532
Aus 15	555(T)
Aus 50	556(T)
Aus 81	522
Aus 116	560(P)
Aus 117	558(T)
Aus 118	562(T)
Aus 130	544
Aus 143	546, 548, 573(T), 574(T), 578(T)
Aus 144	546, 573(T), 574(T), 577(T)
Aus 151	546, 580(T), 581(T)
Aus 155	548, 568(T), 572(T), 574(T)
Aus 157	569(T), 570(T), 571(T), 574(T), 575(T), 576(T), 578(T)
Aus 195	524
Aus 200	524
Aus 207	524
Aus 236	533, 551(T)
Aus 242	526
Aus 245	528
Aus 252	531
Aus 254	530
Aus 255	550(T)
Aus 256	552(T)
Aus 262	533
Aus 299	539
Aus 320	542
Aus 327	563(T)
Aus 328	561(T)
Aus 337	560(P)
Aus 349	546, 547, 567(T), 579(T)
Aus 357	566(T)
Aus 485	565(T)
Aus 489	524, 549(T)
Aus 490	527
Aus 607	543
Aus 612	533
Aus 616	533
Aus 625	554(T)
Aus 728	542
Aus 729	542
Aus 754	541, 564(T)
Aus 755	559(T)
Aus 763	557(T)
Aus 778	545
Aus 781	565(T)
Aus 801	546
Aus 807	524
Aus 808	523, 524, 549(T)
Aus 809	524
Aus 814	533
Aus 815	529
Aus 819	527, 533
Aus 830	533
Aus 835	533

Aus Chart	Notices
Aus 839	540
Aus 840	540
Aus 841	540
Aus 4060	525
Aus 4601	549(T)
Aus 4602	525, 549(T)
Aus 4604	525, 534, 537
Aus 4622	537
Aus 4708	559(T)
Aus 4709	559(T)
Aus 4710	559(T)
PNG 379	535, 538, 553(T)
PNG 505	538
PNG 507	534
PNG 508	536, 554(T)
PNG 545	537
PNG 554	537
PNG 621	538
PNG 625	536
PNG 647	535, 553(T)
PNG 680	537

INT Chart	Notices
INT 60	525
INT 601	549(T)
INT 602	525, 549(T)
INT 604	525, 534, 537
INT 622	537
INT 708	559(T)
INT 709	559(T)
INT 710	559(T)

521 AUSTRALIA - Products - New Charts, New Editions, Withdrawn Charts

Australian Hydrographic Office

New Charts

<i>Chart</i>	<i>Title and Geographical limits</i>	<i>Scale</i>	<i>Publication Date</i>	<i>Remarks</i>
NIL				

New Electronic Navigation Chart (Aus ENC)

<i>Cell Name</i>	<i>Title</i>	<i>Publication Date</i>	<i>Remarks</i>
NIL			

New Editions and Withdrawn Charts

<i>Chart</i>	<i>Title</i>	<i>Scale</i>	<i>Publication Date</i>	<i>Remarks</i>
NIL				

Chart permanently withdrawn

Charts listed above as withdrawn no longer meet chart carriage requirements and should be marked as "superseded" and replaced with the new chart/ new edition listed prior to passage through the area covered by the new chart.

When placing orders with a chart agent between notice of forthcoming edition and its publication, mariners should advise whether their order pertains to the current edition or the new edition.

For further details refer to the AHO website at www.hydro.gov.au for new edition and new chart stock arrival information.

522 AUSTRALIA - Products - New Charts and New Editions to be published shortly

Australian Hydrographic Office

New Charts to be published shortly

<i>Chart</i>	<i>Title</i>	<i>Scale</i>	<i>Remarks</i>
NIL			

New Editions to be published shortly

<i>Chart</i>	<i>Title</i>	<i>Scale</i>	<i>Remarks</i>
Aus 81	Australia - West Coast - Western Australia - Approaches to Geraldton	1:25 000	New edition with general updating throughout;
	Plan: Geraldton	1:7 500	including latest bathymetric data.

523 AUSTRALIA - NEW SOUTH WALES - Cape Banks - Scientific instrument eastwards

University of New South Wales

Aus 808 [473/2025]

Insert	depth, 15m, enclosed by danger circle with legend, ODAS	33° 59'.62 S	151° 27'.04 E
--------	---	--------------	---------------

524 AUSTRALIA - NEW SOUTH WALES - Montague Island to Clarence River - Historic wrecks

Australian Hydrographic Office

Aus 195 [386/2025]			
Insert	magenta legend, <i>Historic Wk (see Note)</i>	34° 22'.320 S	150° 56'.114 E
Aus 200 [473/2025]			
Replace	legend, Wk, with magenta legend, <i>Historic Wk (see Note)</i>	33° 50'.81 S	151° 21'.17 E
Aus 207 [837/2024]			
Insert	magenta legend, <i>Historic Wk (see Note)</i>	32° 52'.862 S	151° 53'.955 E
Aus 489 [4/2025]			
Insert	safe clearance depth, 60m, enclosed by danger circle with magenta legend, <i>Historic Wk (see Note)</i>	33° 50'.81 S	151° 21'.10 E
Delete	depth, 65m, and enclosing danger circle with legend, Wk	33° 51'.3 S	151° 21'.2 E
Aus 807 [473/2025]			
Replace	legend, Wk, with magenta legend, <i>Historic Wk (see Note)</i>	36° 13'.2 S	150° 17'.8 E
Aus 808 [523/2025]			
Replace	legend, Wk, with magenta legend, <i>Historic Wk (see Note)</i>	33° 50'.8 S	151° 21'.2 E
Aus 809 [386/2025]			
Insert	magenta legend, <i>Historic Wk (see Note)</i>	32° 52'.86 S	151° 54'.30 E
Replace	legend, Wk, with magenta legend, <i>Historic Wk (see Note)</i>	33° 50'.8 S	151° 21'.2 E

525 PACIFIC OCEAN - Nouvelle Caledonie - Scientific instruments

UKHO

Aus 4060 (INT 60) [556/2024]			
Insert	special cylindrical light buoy, <i>Fl. Y. 2s</i> , without topmark	24° 18'.5 S	169° 29'.9 E
	special cylindrical light buoy, <i>Fl. Y. 2s</i> , without topmark	26° 40'.2 S	163° 57'.3 E
Replace	depth, 3694m, with special cylindrical light buoy, <i>Fl. Y. 2s</i> , without topmark	19° 17'.5 S	166° 48'.8 E
Aus 4602 (INT 602) [322/2025]			
Insert	special cylindrical light buoy, <i>Fl. Y. 2s</i> , without topmark	19° 17'.5 S	166° 48'.8 E
	special cylindrical light buoy, <i>Fl. Y. 2s</i> , without topmark	24° 18'.5 S	169° 29'.9 E
	special cylindrical light buoy, <i>Fl. Y. 2s</i> , without topmark	26° 40'.2 S	163° 57'.3 E
Delete	depth, 3694m	19° 17'.0 S	166° 46'.0 E
Aus 4604 (INT 604) [703/2024]			
Insert	special cylindrical light buoy, <i>Fl. Y. 2s</i> , without topmark	19° 17'.5 S	166° 48'.8 E
Delete	depth, 3694m	19° 17'.0 S	166° 46'.0 E

526 AUSTRALIA - QUEENSLAND - Bundaberg - Burnett River - Sea Reach - Light buoy

Maritime Safety Queensland

Aus 242 [469/2024]			
Delete	light buoy	24° 45'.33 S	152° 24'.43 E

527 AUSTRALIA - QUEENSLAND - Gladstone - Depth

Maritime Safety Queensland

Aus 490 [475/2025]			
Insert	accompanying block	23° 50'.0 S	151° 40'.0 E
Aus 819 [474/2025]			
Replace	depth, 10 _g m, with depth, 10 _g m	23° 52'.4 S	151° 29'.3 E

528 AUSTRALIA - QUEENSLAND - Gladstone - Scientific instruments
Maritime Safety Queensland Notice 269(T)/2025

Aus 245 [474/2025]

Insert	special spherical light buoy, <i>Fl. Y. 4·5s</i> , without topmark	23° 45'.401 S	151° 09'.448 E
	special spherical light buoy, <i>Fl. Y. 4·5s</i> , without topmark	23° 45'.926 S	151° 10'.835 E
	special spherical light buoy, <i>Fl. Y. 4·5s</i> , without topmark	23° 46'.050 S	151° 10'.090 E
	special spherical light buoy, <i>Fl. Y. 4·5s</i> , without topmark	23° 47'.072 S	151° 11'.133 E
	special spherical light buoy, <i>Fl. Y. 4·5s</i> , without topmark	23° 48'.304 S	151° 12'.555 E
	special spherical light buoy, <i>Fl. Y. 4·5s</i> , without topmark	23° 49'.020 S	151° 12'.242 E

529 AUSTRALIA - QUEENSLAND - Hamilton Patches - Depth
UKHO

Aus 815 [5/2025]

Insert	depth, <i>4m</i> , and extend contour N to enclose	26° 51'.33 S	153° 09'.84 E
--------	--	--------------	---------------

530 AUSTRALIA - QUEENSLAND - Hayman Island - Buoy
Maritime Safety Queensland

Aus 254 (Stonehaven Anchorage) [NE 21/3/2025]

Delete	buoy	20° 02'.58 S	148° 52'.90 E
--------	------	--------------	---------------

531 AUSTRALIA - QUEENSLAND - Hook Island - Nara Inlet - Beacon
Maritime Safety Queensland

Aus 252 [242/2025]

Insert	structure colour, <i>Y</i>	20° 08'.74 S	148° 54'.31 E
--------	----------------------------	--------------	---------------

532 AUSTRALIA - QUEENSLAND - Karumba - Light buoy
Maritime Safety Queensland Notice 263/2025

Aus 6 [842/2024]

Delete	light buoy	17° 25'.86 S	140° 43'.68 E
--------	------------	--------------	---------------

533 AUSTRALIA - QUEENSLAND - Moreton Bay to Fairway Reef - Historic wrecks

Australian Hydrographic Office

Note: position of existing chart notes may vary on certain charts.

Aus 236 [321/2025]		
Replace	legend, Wk, with magenta legend, <i>Historic Wk</i> (see Note)	27° 13'.5 S 153° 16'.1 E
Aus 262 [NE 27/9/2024]		
Insert	magenta legend, <i>Historic Wk</i> (see Note)	16° 53'.858 S 145° 52'.050 E
	accompanying chart note, HISTORIC WRECK	16° 54'.5 S 145° 45'.0 E
Aus 612 (Saumarez Reefs) [NE 28/5/2021]		
Insert	accompanying chart note, HISTORIC WRECK, in N border	21° 37'.01 S 153° 55'.00 E
	magenta legend, <i>Historic Wk</i> (see Note)	21° 53'.41 S 153° 39'.21 E
Aus 616 (Bougainville Reef) [NE 26/7/2019]		
Insert	magenta legend, <i>Historic Wk</i> (see Note)	15° 29'.78 S 147° 07'.58 E
	accompanying chart note, HISTORIC WRECK	15° 35'.0 S 147° 05'.0 E
Aus 814 [241/2025]		
Replace	legend, Wk, with magenta legend, <i>Historic Wk</i> (see Note)	27° 13'.5 S 153° 16'.7 E
Aus 819 [527/2025]		
Insert	magenta legend, <i>Historic Wk</i> (see Note)	23° 26'.11 S 151° 54'.88 E
Aus 830 [122/2025]		
Insert	magenta legend, <i>Historic Wk</i> (see Note)	16° 53'.84 S 145° 52'.41 E
Aus 835 [128/2025]		
Replace	legend, Wk, with magenta legend, <i>Historic Wk</i> (see Note)	11° 45'.4 S 143° 14'.8 E

534 PAPUA NEW GUINEA - Ava Point - Nav aids*Former Notice* - 792(T)/2022 is cancelled

National Maritime Safety Authority PNG Coastal Navigation Warning 7/2025

Aus 4604 (INT 604) [525/2025]		
Delete	light	10° 34'.1 S 149° 52'.9 E
PNG 507 [344/2020]		
Replace	light with unlit beacon	10° 34'.1 S 149° 52'.9 E

535 PAPUA NEW GUINEA - Boera Head - Nav aids

National Maritime Safety Authority PNG Coastal Navigation Warning 5/2025

PNG 379 [84/2025]		
Replace	light with unlit beacon	9° 23'.4 S 147° 00'.9 E
PNG 647 [476/2025]		
Replace	light with unlit beacon	9° 23'.4 S 147° 00'.9 E

536 PAPUA NEW GUINEA - Isulailai Point - Nav aids

National Maritime Safety Authority PNG Coastal Navigation Warning 6/2025

PNG 508 [932/2021]		
Replace	light with unlit beacon	10° 33'.6 S 150° 41'.7 E
PNG 625 [863/2022]		
Replace	light beacon with unlit beacon	10° 33'.63 S 150° 41'.71 E

537 PAPUA NEW GUINEA - Tavui Point - Nav aids

Former Notice - 1067(T)/2021 is cancelled

National Maritime Safety Authority PNG Coastal Navigation Warning 8/2025

Aus 4604 (INT 604) [534/2025]

Delete light 4° 08'.2 S 152° 10'.2 E

Aus 4622 (INT 622) [393/2024]

Delete light 4° 08'.2 S 152° 10'.2 E

PNG 545 [NE 13/9/2024]

Replace light with unlit beacon 4° 08'.2 S 152° 10'.2 E

PNG 554 [NE 13/9/2024]

Replace light with unlit beacon 4° 08'.2 S 152° 10'.2 E

PNG 680 [NE 30/8/2024]

Replace light with unlit beacon 4° 08'.2 S 152° 10'.2 E

538 PAPUA NEW GUINEA - Vabukori - Nav aids

National Maritime Safety Authority PNG

PNG 379 [535/2025]

Insert	continuous line, between	9° 35'.61 S	147° 03'.17 E
		9° 37'.57 S	147° 00'.43 E
	legend, <i>Dir 054°</i>	9° 37'.51 S	147° 00'.48 E

Replace light with unlit beacon with rectangular daymark 9° 29'.8 S 147° 11'.3 E

Amend light to *Iso.WRG.4s 13M* 9° 29'.9 S 147° 11'.1 E

Delete legend, 054·5° 9° 35'.5 S 147° 03'.3 E

PNG 505 [646/2023]

Insert	continuous line, between	9° 35'.61 S	147° 03'.17 E
		9° 37'.57 S	147° 00'.43 E
	legend, <i>Dir 054°</i>	9° 37'.51 S	147° 00'.48 E

Replace light with unlit beacon with rectangular daymark 9° 29'.8 S 147° 11'.3 E

Amend light to *Iso.WRG.4s 13M* 9° 29'.9 S 147° 11'.1 E

Delete legend, 054·5° 9° 35'.5 S 147° 03'.3 E

PNG 621 [NE 3/3/2023]

Insert	continuous line, between	9° 35'.609 S	147° 03'.172 E
		9° 37'.566 S	147° 00'.434 E
	legend, <i>Dir 054°</i>	9° 37'.505 S	147° 00'.483 E

Replace light with unlit beacon with rectangular daymark 9° 29'.79 S 147° 11'.33 E

Amend light to *Iso.WRG.4s 13M* 9° 29'.94 S 147° 11'.13 E

Delete	light sector and legend, W, emanating from light	9° 29'.79 S	147° 11'.33 E
	light sector and legend, W, emanating from light	9° 29'.94 S	147° 11'.13 E
	legend, 054·5°	9° 35'.51 S	147° 03'.27 E

539 AUSTRALIA - TORRES STRAIT - Thursday Island - Historic wreck

Australian Hydrographic Office

Aus 299 [395/2025]Replace legend, Wk, with magenta legend, *Historic Wk (see Note)* 10° 35'.31 S 142° 12'.93 E

540 AUSTRALIA - TORRES STRAIT - Yam Island to Masig Island - Light buoys

Maritime Safety Queensland

Aus 839 [NE 30/5/2025]

Replace	buoy with port lateral cylindrical light buoy, <i>Fl.R.2.5s</i> , without topmark	9° 53'.9 S	142° 45'.9 E
---------	---	------------	--------------

Aus 840 [83/2025]

Replace	buoy with starboard lateral conical light buoy, <i>Fl.G.2.5s</i> , without topmark	9° 44'.9 S	143° 24'.1 E
	buoy with port lateral cylindrical light buoy, <i>Fl.R.2.5s</i> , without topmark	9° 53'.9 S	142° 45'.9 E

Aus 841 [NE 30/5/2025]

Replace	buoy with port lateral cylindrical light buoy, <i>Fl.R.2.5s</i> , without topmark	9° 53'.9 S	142° 45'.9 E
---------	---	------------	--------------

541 AUSTRALIA - WESTERN AUSTRALIA - Guilderton - Light

Australian Maritime Safety Authority Final ATH 6/2025

Aus 754 [360/2025]

Amend	light range to <i>18M</i>	31° 20'.3 S	115° 29'.5 E
-------	---------------------------	-------------	--------------

542 AUSTRALIA - WESTERN AUSTRALIA - Montague Sound - Swift bay - Depths

Australian Hydrographic Office

Aus 320 [13/2025]

Replace	depth, 16 ₅ m, with depth, 11 ₄ <i>m</i>	14° 26'.9 S	125° 34'.5 E
---------	--	-------------	--------------

Delete	indefinite contour, between	14° 26'.7 S	125° 33'.9 E
		14° 26'.6 S	125° 35'.1 E
		14° 27'.2 S	125° 33'.9 E
		14° 27'.3 S	125° 35'.0 E

Aus 728 [320/2024]

Replace	depth, 14 ₆ m, with depth, 11 ₇ <i>m</i>	14° 25'.7 S	125° 34'.3 E
	depth, 16 ₅ m, with depth, 11 ₄ <i>m</i>	14° 26'.9 S	125° 34'.5 E
	depth, 14 ₆ m, with depth, 11 ₇ <i>m</i>	14° 28'.6 S	125° 34'.6 E

Delete	indefinite contour with 15m contour value, between	14° 26'.7 S	125° 33'.9 E
		14° 26'.6 S	125° 35'.1 E
		14° 27'.2 S	125° 33'.9 E
		14° 27'.3 S	125° 35'.0 E

Aus 729 [13/2025]

Replace	depth, 14 ₆ m, with depth, 11 ₇ <i>m</i>	14° 25'.7 S	125° 34'.3 E
	depth, 16 ₅ m, with depth, 11 ₄ <i>m</i>	14° 26'.9 S	125° 34'.5 E
	depth, 14 ₆ m, with depth, 11 ₇ <i>m</i>	14° 28'.6 S	125° 34'.6 E

Delete	indefinite contour with 15m contour value, between	14° 26'.7 S	125° 33'.9 E
		14° 26'.6 S	125° 35'.1 E
		14° 27'.2 S	125° 33'.9 E
		14° 27'.3 S	125° 35'.0 E

543 INDIAN OCEAN - Cocos (Keeling) Islands - South Keeling Islands - Port Refuge - Historic wreck

Australian Hydrographic Office

Aus 607 [NE 30/8/2024]

Replace	legend, Wk, with magenta legend, <i>Historic Wk (see Note)</i>	12° 05'.98 S	96° 51'.55 E
---------	--	--------------	--------------

544 AUSTRALIA - SOUTH AUSTRALIA - Port Adelaide - North Arm - Historic wreck

Australian Hydrographic Office

Aus 130 [NE 7/3/2025]

Amend	legend to <i>Historic Wks (see Note)</i>	34° 48'.77 S	138° 32'.64 E
-------	--	--------------	---------------

545 AUSTRALIA - SOUTH AUSTRALIA - Port Davis - Beacons

Department for Infrastructure and Transport SA Notice 40/2025

Aus 778 [326/2025]

Insert	beacon with starboard lateral topmark	33° 14'.96 S	137° 49'.14 E
Move	beacon to	33° 15'.1 S 33° 15'.10 S	137° 49'.0 E 137° 48'.80 E

546 AUSTRALIA - VICTORIA - Barwon Head to Phillip Island - Historic wrecks

Australian Hydrographic Office

Aus 143 [363/2025]

Insert	magenta legend, <i>Historic Wk (see Note)</i>	38° 06'.01 S	145° 01'.16 E
	magenta legend, <i>Historic Wk (see Note)</i>	38° 17'.04 S	144° 30'.62 E
Replace	legend, Wk, with magenta legend, <i>Historic Wk (see Note)</i>	38° 20'.7 S	144° 29'.5 E

Aus 144 [185/2024]

Replace	dangerous wreck with depth, 0.5m, enclosed by danger circle with magenta legend, <i>Historic Wk (see Note)</i>	38° 17'.97 S	144° 38'.74 E
---------	--	--------------	---------------

Aus 151 [404/2025]

Insert	magenta legend, <i>Historic Wk (see Note)</i>	38° 18'.496 S	145° 12'.253 E
--------	---	---------------	----------------

Aus 349 [186/2024]

Insert	magenta legend, <i>Historic Wk (see Note)</i>	38° 17'.22 S	144° 31'.61 E
Replace	legend, Wk, with magenta legend, <i>Historic Wk (see Note)</i>	38° 20'.7 S	144° 30'.0 E

Aus 801 [404/2025]

Insert	magenta legend, <i>Historic Wk (see Note)</i>	38° 28'.60 S	145° 19'.69 E
--------	---	--------------	---------------

547 AUSTRALIA - VICTORIA - Port Campbell - Offshore safety zone southwards

NOPSEMA

Aus 349 [546/2025]

Insert	restricted area with radius 0.27M, centred on	38° 56'.08 S	142° 52'.87 E
--------	---	--------------	---------------

548 AUSTRALIA - VICTORIA - Port Phillip - Point Cook - Light beacon

Parks Victoria Notice 314/2025

Aus 143 [546/2025]

Insert	south cardinal light beacon, VQ(6)+LFI.10s, with topmark	37° 56'.82 S	144° 46'.18 E
--------	--	--------------	---------------

Aus 155 [363/2025]

Insert	south cardinal light beacon, VQ(6)+LFI.10s, with topmark	37° 56'.816 S	144° 46'.184 E
--------	--	---------------	----------------

549(T)/2025 AUSTRALIA - NEW SOUTH WALES - Botany Bay to Eden - Survey operations eastwards
Gulf Agency Company (Australia)

Vessel *Ocean Titan* is conducting survey operations between the following positions:

34° 01'.94 S 151° 20'.11 E
34° 29'.06 S 151° 18'.47 E
34° 32'.06 S 151° 19'.82 E
34° 37'.12 S 151° 31'.45 E
34° 39'.97 S 151° 33'.81 E
34° 48'.88 S 151° 37'.35 E
34° 55'.10 S 151° 46'.13 E
34° 58'.91 S 152° 02'.31 E
35° 08'.09 S 152° 18'.84 E
35° 18'.39 S 152° 29'.93 E
36° 46'.36 S 152° 57'.81 E
37° 18'.79 S 153° 20'.12 E
37° 16'.25 S 154° 13'.73 E.

Mariners are advised to navigate with caution in the area.

Chart temporarily affected - Aus 489 - Aus 808 - Aus 4601 (INT 601) - Aus 4602 (INT 602)

550(T)/2025 AUSTRALIA - QUEENSLAND - Abbot Point - Scientific instrument
Maritime Safety Queensland Notice 262(T)/2025

A tide gauge marked by a special light buoy, *Fl.Y.2s*, exists in position 19° 51'.55 S 148° 05'.21 E.

Mariners are advised to navigate with caution in the area.

Chart temporarily affected - Aus 255

551(T)/2025 AUSTRALIA - QUEENSLAND - Moreton Bay - Chain Banks - Wreck
Maritime Safety Queensland Notice 256(T)/2025

A wreck marked by a special light buoy, *Fl.Y.2-5s*, exists in position 27° 23'.78 S 153° 18'.49 E.

Mariners are advised to navigate with caution in the area.

Chart temporarily affected - Aus 236

552(T)/2025 AUSTRALIA - QUEENSLAND - Townsville - Dredging operations; bed levelling operations
Maritime Safety Queensland Notice 273(T)/2025

The dredge *Brisbane* is conducting dredging operations in the Sea Channel, Platypus Channel and swing basins.

The vessel *Pacific Titan* will be conducting bed levelling operations in the Platypus Channel and Sea Channel.

Vessels will display appropriate lights and shapes and will monitor VHF Ch 16.

Mariners are advised to navigate with caution in the area and keep well clear.

Chart temporarily affected - Aus 256

553(T)/2025 PAPUA NEW GUINEA - Boera Head - Light unlit
Former Notice - 771(T)/2020 is cancelled
National Maritime Safety Authority PNG Coastal Navigation Warning 5/2025

Cancel this notice on receipt.

Chart formerly affected - PNG 379 - PNG 647

554(T)/2025 PAPUA NEW GUINEA - Isulailai Point - Light beacon unlit*Former Notice - 1331(T)/2019 is cancelled*

National Maritime Safety Authority PNG Coastal Navigation Warning 6/2025

Cancel this notice on receipt.

Chart formerly affected - Aus 625 - PNG 508**555(T)/2025 AUSTRALIA - NORTHERN TERRITORY - Gove Harbour - Harbour Islet - Light buoy unlit**

Rio Tinto

The starboard lateral light buoy, *Fl.G.4s* (12° 11'.78 S 136° 41'.20 E), is unlit.

Mariners are advised to navigate with caution in the area.

Chart temporarily affected - Aus 15**556(T)/2025 AUSTRALIA - WESTERN AUSTRALIA - Broome - Roebuck Bay - Exclusion zone; mooring buoy***Former Notice - 414(T)/2025 is cancelled*

Kimberley Ports Authority Notice 11/2025

To facilitate the mooring of Kimberley Marine Supply Base pontoon, an exclusion zone has been established in an area bounded by the following positions:

18° 01'.52 S 122° 15'.67 E

18° 01'.52 S 122° 16'.60 E

18° 00'.65 S 122° 16'.60 E

18° 00'.65 S 122° 15'.67 E.

A lit yellow mooring buoy, *Fl.Y.3s*, exists in position 18° 00'.90 S 122° 16'.35 E.

Mariners are advised to navigate with caution in the area.

Chart temporarily affected - Aus 50**557(T)/2025 AUSTRALIA - WESTERN AUSTRALIA - Cape Pasley - Survey operations southwards complete***Former Notice - 141(T)/2025 is cancelled*

Department of Transport WA

Cancel this notice on receipt.

Chart formerly affected - Aus 763**558(T)/2025 AUSTRALIA - WESTERN AUSTRALIA - Cockburn Sound - Jervoise Bay - Northern Harbour - Wind turbine**

INF66

A floating vertical wind turbine is moored in position 32° 08'.79 S 115° 45'.87 E.

An 85m radius restricted area, marked by light buoys, exists around the wind turbine for all vessels except those that are authorised to enter.

Mariners are advised to navigate with caution in the area.

Chart temporarily affected - Aus 117**559(T)/2025 AUSTRALIA - WESTERN AUSTRALIA - Fremantle to Esperance - Survey operations completed***Former Notice - 223(T)/2025 is cancelled*

Subcom

Cancel this notice on receipt.

Chart formerly affected - Aus 755 - Aus 4708 (INT 708) - Aus 4709 (INT 709) - Aus 4710 (INT 710)

560(P)/2025 AUSTRALIA - WESTERN AUSTRALIA - Hopetoun - Mason Bay - Shoaling
Department of Transport WA

Latest survey indicates shoaler depths than those charted may exist in the vicinity of the following positions:
33° 57'.51 S 120° 29'.84 E
33° 57'.77 S 120° 06'.91 E

Mariners are advised to navigate with caution in the area.

Charts will be updated in due course.

Chart which will be affected - Aus 116 - Aus 337

561(T)/2025 AUSTRALIA - WESTERN AUSTRALIA - Montebello Islands - Mooring buoys northwestwards
Delmar Systems , Australian Maritime Safety Authority Auscoast Warning 186/2025

8 lit yellow mooring buoys, *Fl.3s*, exist within 1M radius of 20° 08'.98 S 115° 02'.38 E. 2.5M clearance requested.

Chart temporarily affected - Aus 328

562(T)/2025 AUSTRALIA - WESTERN AUSTRALIA - Oyster Harbour - Wreck salvaged
Former Notice - 266(T)/2025 is cancelled
Department of Transport WA

Cancel this notice on receipt.

Chart formerly affected - Aus 118

563(T)/2025 AUSTRALIA - WESTERN AUSTRALIA - Rankin Bank - Subsea operations completed
Former Notice - 458(T)/2025 is cancelled
Australian Maritime Safety Authority

Cancel this notice on receipt.

Chart formerly affected - Aus 327

564(T)/2025 AUSTRALIA - WESTERN AUSTRALIA - Rottnest Island - Light buoy off station; AIS inoperative westwards
Curtin University

The special light buoy, *Fl. Y.5s*, is off station and in position 31° 59'.58 S 115° 14'.82 E. The AIS is inoperative.

Chart temporarily affected - Aus 754

565(T)/2025 AUSTRALIA - SOUTH AUSTRALIA - Port Vincent - Middle Spit - Light beacon destroyed
Department for Infrastructure and Transport SA Notice 42(T)/2025

The light beacon, *Fl.2s 6m 8M* (34° 45'.34 S 137° 54'.17 E), has been destroyed.

Mariners are advised to navigate with caution in the area.

Chart temporarily affected - Aus 485 - Aus 781

566(T)/2025 AUSTRALIA - VICTORIA - Ninety Mile Beach - Safety zone eastwards
NOPSEMA

On 1 July 2025, a 500m radius safety zone will exist centred on position 38° 23'.87 S 148° 18'.95 E.

Chart temporarily affected - Aus 357

567(T)/2025 AUSTRALIA - VICTORIA - Port Campbell - Safety zone southwestwards
NOPSEMA

On 1 July 2025, a 0.27M radius safety zone will exist centred on the following positions:

39° 00'.86 S 142° 36'.48 E

39° 01'.56 S 142° 34'.73 E

39° 05'.74 S 142° 48'.72 E.

Chart temporarily affected - Aus 349

568(T)/2025 AUSTRALIA - VICTORIA - Port Phillip - Point Cook - Buoy restored

Former Notice - 466(T)/2025 is cancelled

Parks Victoria Notice 315(T)/2025

Cancel this notice on receipt.

Chart formerly affected - Aus 155

569(T)/2025 AUSTRALIA - VICTORIA - Port Phillip - Prince George Bank - Light beacon relit

Former Notice - 513(T)/2025 is cancelled

Parks Victoria Notice 323(T)/2025

Cancel this notice on receipt.

Chart formerly affected - Aus 157

570(T)/2025 AUSTRALIA - VICTORIA - Port Phillip - Prince George Bank - Light beacon relit

Former Notice - 515(T)/2025 is cancelled

Parks Victoria Notice 321(T)/2025

Cancel this notice on receipt.

Chart formerly affected - Aus 157

571(T)/2025 AUSTRALIA - VICTORIA - Port Phillip - Prince George Bank - Light beacon relit

Former Notice - 512(T)/2025 is cancelled

Parks Victoria Notice 320(T)/2025

Cancel this notice on receipt.

Chart formerly affected - Aus 157

572(T)/2025 AUSTRALIA - VICTORIA - Port Phillip - Ricketts Point - Beacon restored

Former Notice - 1010(T)/2024 is cancelled

Parks Victoria Notice 313/2025

Cancel this notice on receipt.

Chart formerly affected - Aus 155

573(T)/2025 AUSTRALIA - VICTORIA - Port Phillip - South Channel - Light beacon destroyed

Parks Victoria Notice 335(T)/2025

The starboard lateral light beacon, *Fl.G.3s 9m No1* (38° 17'.96 S 144° 42'.43 E), has been destroyed.

A replacement light beacon, *Fl.G.3s*, exists in position 38° 17'.97 S 144° 42'.42 E.

Mariners are advised to navigate with caution in the area.

Chart temporarily affected - Aus 143 - Aus 144

574(T)/2025 AUSTRALIA - VICTORIA - Port Phillip - Scientific instruments

Parks Victoria Notice 333(T)/2025

Special light buoys, *Fl. Y. 2.5s*, exist in the following positions:

37° 58'.72 S 144° 59'.73 E

38° 08'.16 S 144° 45'.18 E

38° 09'.73 S 145° 03'.26 E

38° 18'.09 S 144° 52'.36 E

38° 18'.50 S 144° 41'.52 E

38° 18'.95 S 144° 42'.74 E

38° 19'.22 S 144° 43'.91 E.

Mariners are advised to navigate with caution in the area.

Chart temporarily affected - Aus 143 - Aus 144 - Aus 155 - Aus 157**575(T)/2025 AUSTRALIA - VICTORIA - Port Phillip - Clifton Springs - Light beacon unlit**

Parks Victoria Notice 334(T)/2025

The north cardinal light beacon, Q (38° 08'.59 S 144° 33'.80 E), is unlit.

Mariners are advised to navigate with caution in the area.

Chart temporarily affected - Aus 157**576(T)/2025 AUSTRALIA - VICTORIA - Port Phillip - Prince George Bank - Light beacon destroyed***Former Notice - 514(T)/2025 is cancelled*

Parks Victoria Notice 329(T)/2025

The east cardinal light beacon, Q(3)10s (38° 07'.64 S 144° 43'.00 E), has been destroyed.

Mariners are advised to navigate with caution in the area.

Chart temporarily affected - Aus 157**577(T)/2025 AUSTRALIA - VICTORIA - Port Phillip - Weeroona Bay - Light buoy off station**

Parks Victoria Notice 330(T)/2025

The special light buoy, *Fl. Y. 5s* (38° 18'.67 S 144° 42'.55 E), is off station.

Mariners are advised to navigate with caution in the area.

Chart temporarily affected - Aus 144**578(T)/2025 AUSTRALIA - VICTORIA - Port Phillip - Portarlington - Light beacon relit***Former Notice - 516(T)/2025 is cancelled*

Parks Victoria Notice 338/2025

Cancel this notice on receipt.

Chart formerly affected - Aus 143 - Aus 157**579(T)/2025 AUSTRALIA - VICTORIA - Warrnambool - Scientific instrument southwards unlit***Former Notice - 517(T)/2025 is cancelled*

BMT

The special light buoy, *Fl. Y. 4s* (38° 29'.27 S 142° 27'.43 E), is unlit.

Mariners are advised to navigate with caution in the area.

Chart temporarily affected - Aus 349

580(T)/2025 AUSTRALIA - VICTORIA - Western Port - North Arm - Scientific instruments

Former Notice - 518(T)/2025 is cancelled

Parks Victoria Notice 309(T)/2025

Special light buoys, *Fl. Y. 3s*, exist in the following positions:

38° 15'.95 S 145° 16'.56 E

38° 16'.62 S 145° 14'.28 E

38° 21'.34 S 145° 13'.28 E

Chart temporarily affected - Aus 151

581(T)/2025 AUSTRALIA - VICTORIA - Western Port - Gentle Annie Channel - Buoy off station

Parks Victoria Notice 317/2025

The port lateral buoy, *No6* (38° 14'.27 S 145° 20'.84 E), is off station.

Mariners are advised to navigate with caution in the area.

Chart temporarily affected - Aus 151

II

HYDROGRAPHIC REPORTS

NIL

To accompany Australian Notice to Mariners 533/2025

HISTORIC WRECK

The site of an historic wreck is protected from unauthorised interference. For details see Mariners Handbook for Australian Waters AHP 20.

Note for chart Aus 262

To accompany Australian Notice to Mariners 533/2025

HISTORIC WRECK

The site of an historic wreck is protected from unauthorised interference. For details see Mariners Handbook for Australian Waters AHP 20.

Note for chart Aus 612

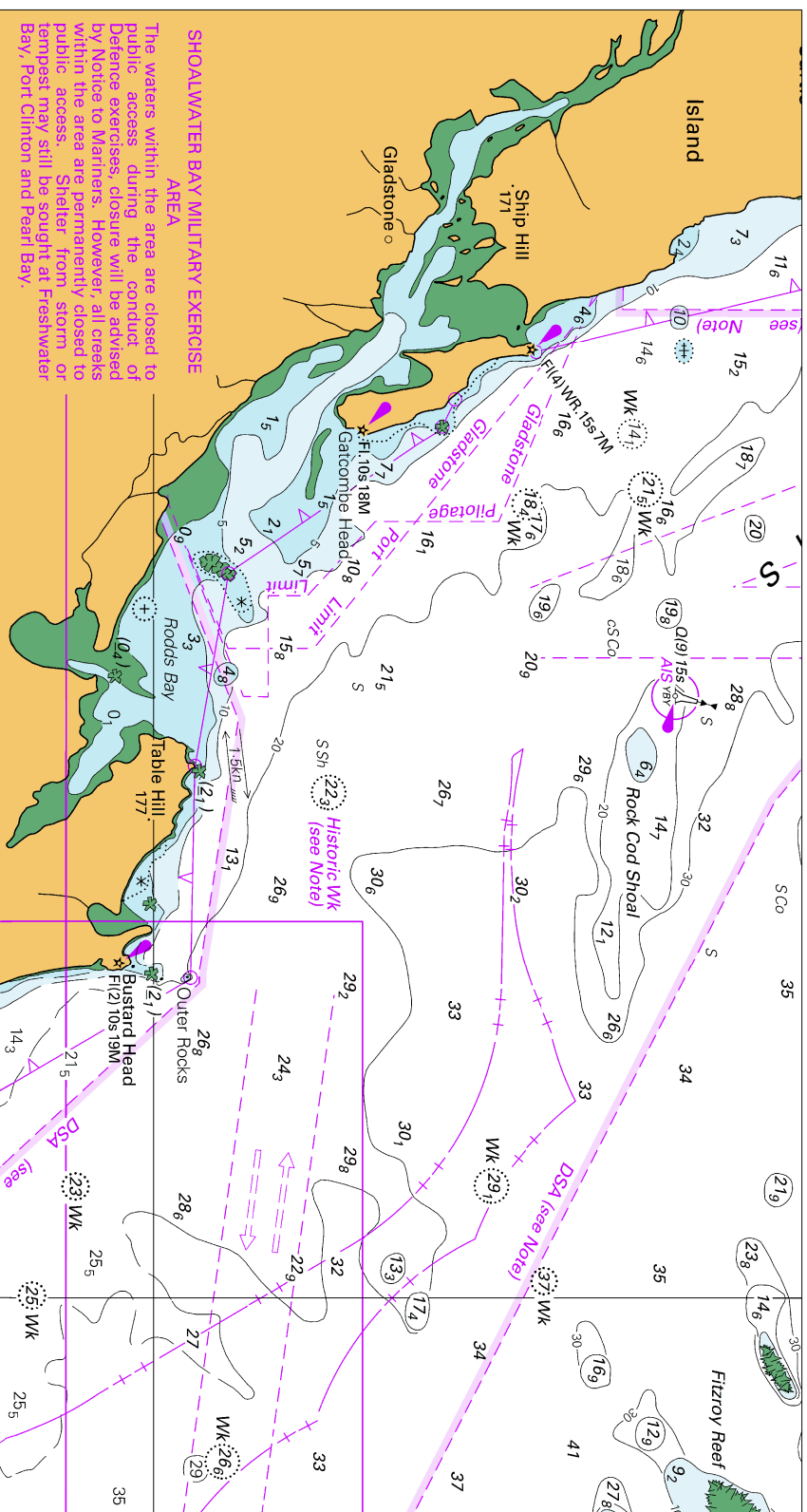
To accompany Australian Notice to Mariners 533/2025

HISTORIC WRECK

The site of an historic wreck is protected from unauthorised interference. For details see Mariners Handbook for Australian Waters AHP 20.

Note for chart Aus 616

To accompany Australian Notice to Mariners 527/2025



Block for chart Aus 490

© Commonwealth of Australia 2025

(210.9 × 111.7 mm)