

## TEMPORARY AND PRELIMINARY NOTICES

In force on 27 June 2025

### NEW SOUTH WALES

#### **709(T)/2016 AUSTRALIA - NEW SOUTH WALES - Cape Byron - Obstructions eastwards**

HMAS *Gascoyne*

Obstructions exist in positions 28° 36'.20 S 153° 44'.30 E and 28° 36'.95 S 153° 44'.02 E.

**Chart temporarily affected - Aus 813**

#### **604(T)/2020 AUSTRALIA - NEW SOUTH WALES - Jervis Bay - Hyams Beach - Light buoy**

Australian Maritime Warfare Centre

A special light buoy, *Fl. Y. 5s*, exists in position 35° 06'.23 S 150° 42'.85 E.

**Chart temporarily affected - Aus 807 - Aus 808**

#### **997(T)/2020 AUSTRALIA - NEW SOUTH WALES - Merimbula Bay to Broulee Island - Scientific instruments**

Transport for NSW

Special light buoys, *Fl(5)Y. 20s*, exist in the following positions:

35° 50'.9 S 150° 11'.3 E

35° 52'.8 S 150° 09'.7 E

36° 54'.5 S 149° 55'.0 E.

**Chart temporarily affected - Aus 806 - Aus 807**

#### **105(T)/2021 AUSTRALIA - NEW SOUTH WALES - Port Jackson - Berrys Bay - Jetties ruined**

Transport for NSW , NSW Roads and Maritime Services

Jetties and piers are ruined, and partially submerged obstructions may exist in an area bounded by the coast and the following positions:

33° 50'.70 S 151° 11'.69 E

33° 50'.70 S 151° 11'.76 E

33° 50'.67 S 151° 11'.85 E

33° 50'.63 S 151° 11'.84 E.

A west cardinal light beacon, *Q(9) 15s*, exists in position 33° 50'.59 S 151° 11'.50 E.

Mariners are advised to navigate with caution in the area.

**Chart temporarily affected - Aus 200**

#### **880(T)/2021 AUSTRALIA - NEW SOUTH WALES - Cape Byron - Light buoy off station northwards**

Byron Bay Deep Sea Fishing Club

The special light buoy, *Fl. Y. 5s* (28° 35'.40 S 153° 38'.11 E), is off station.

**Chart temporarily affected - Aus 813**

#### **61(T)/2022 AUSTRALIA - NEW SOUTH WALES - Port Jackson - Chowder Bay - Scientific instruments**

*Former Notice - 524(T)/2021* is cancelled

Department of Defence

Subsurface scientific instruments, 2m above seabed, exist in the following positions:

33° 50.42' S 151° 15.42' E

33° 50.39' S 151° 15.39' E

33° 50.38' S 151° 15.43' E.

The area will be marked by buoys.

Mariners are advised to navigate with caution in the area.

**Chart temporarily affected - Aus 200**

**727(T)/2022 AUSTRALIA - NEW SOUTH WALES - Tathra to Seal Rocks - Obstructions**

Transport for NSW Notice SY2028

Shipping containers and debris may exist along the coast and in offshore waters between Tathra (36° 43'.55 S 149° 59'.46 E) and Seal Rocks (32° 27'.86 S 152° 33'.22 E).

Mariners are advised to navigate with caution in the area.

**Chart temporarily affected - Aus 489 - Aus 806 - Aus 807 - Aus 808 - Aus 809 - Aus 810 - Aus 4601 (INT 601) - Aus 4602 (INT 602)**

**133(T)/2023 AUSTRALIA - NEW SOUTH WALES - Crabbes Creek Beach - Wreck eastwards**

Australian Maritime Safety Authority

A wreck exists in position 28° 29'.43 S 153° 38'.52 E.

**Chart temporarily affected - Aus 813**

**701(T)/2023 AUSTRALIA - NEW SOUTH WALES - Cape Banks to Cabbage Tree Bay - Scientific instruments eastwards**

Sydney Institute of Marine Science

Subsurface scientific instruments exist as follows:

<i>Position</i>	<i>Metres below surface</i>
33° 47'.92 S 151° 17'.71 E	9
33° 48'.05 S 151° 18'.33 E	24
33° 49'.59 S 151° 17'.89 E	28
33° 49'.85 S 151° 17'.64 E	28
33° 50'.05 S 151° 17'.48 E	27
33° 50'.25 S 151° 17'.30 E	26.5
33° 53'.74 S 151° 17'.30 E	27
33° 53'.91 S 151° 17'.75 E	41
33° 54'.17 S 151° 18'.16 E	58
33° 54'.43 S 151° 18'.59 E	63
33° 54'.69 S 151° 19'.05 E	64
33° 54'.96 S 151° 19'.51 E	64
33° 55'.21 S 151° 19'.93 E	71
33° 55'.46 S 151° 20'.36 E	70
33° 55'.72 S 151° 20'.79 E	80
33° 55'.98 S 151° 21'.24 E	80
33° 56'.25 S 151° 21'.71 E	82
33° 56'.49 S 151° 22'.16 E	87
33° 56'.75 S 151° 22'.59 E	90
33° 57'.06 S 151° 23'.02 E	98
33° 57'.32 S 151° 23'.47 E	119.

**Chart temporarily affected - Aus 200 - Aus 489 - Aus 809**

**808(T)/2023 AUSTRALIA - NEW SOUTH WALES - Clarence River - Scientific instrument**

NSW Department of Planning and Environment

A special light buoy, *Fl.Y.5s*, exists in position 29° 25'.31 S 153° 21'.32 E.

**Chart temporarily affected - Aus 222**

**105(T)/2024 AUSTRALIA - NEW SOUTH WALES - Green Bluff - Scientific instruments eastwards**

Sydney Institute of Marine Science

Subsurface scientific instruments exist as follows:

<i>Position</i>	<i>Metres below surface</i>
30° 12'.27 S 153° 16'.54 E	43
30° 12'.27 S 153° 17'.05 E	50
30° 12'.31 S 153° 15'.46 E	23
30° 12'.44 S 153° 14'.95 E	30

30° 12'.49 S 153° 14'.43 E	31
30° 12'.55 S 153° 13'.92 E	35
30° 12'.58 S 153° 13'.40 E	34
30° 12'.64 S 153° 12'.90 E	25
30° 12'.67 S 153° 10'.48 E	16
30° 12'.70 S 153° 12'.41 E	26
30° 12'.73 S 153° 11'.91 E	24
30° 12'.77 S 153° 11'.40 E	23
30° 12'.81 S 153° 10'.87 E	20.

**Chart temporarily affected - Aus 812**

**106(T)/2024 AUSTRALIA - NEW SOUTH WALES - Montague Island - Scientific instruments**  
Sydney Institute of Marine Science

Subsurface scientific instruments exist as follows:

<i>Position</i>	<i>Metres below surface</i>
36° 15'.28 S 150° 14'.20 E	49
36° 15'.40 S 150° 13'.08 E	7
36° 15'.47 S 150° 12'.58 E	33
36° 15'.52 S 150° 12'.04 E	38
36° 15'.59 S 150° 11'.50 E	31
36° 15'.66 S 150° 10'.96 E	30
36° 15'.71 S 150° 10'.43 E	29
36° 15'.75 S 150° 09'.15 E	12
36° 15'.77 S 150° 09'.97 E	29.

**Chart temporarily affected - Aus 806 - Aus 807**

**107(T)/2024 AUSTRALIA - NEW SOUTH WALES - Seal Rocks - Scientific instruments**  
Sydney Institute of Marine Science

Subsurface scientific instruments exist as follows:

<i>Position</i>	<i>Metres below surface</i>
32° 27'.16 S 152° 33'.47 E	35
32° 27'.16 S 152° 32'.75 E	28
32° 27'.45 S 152° 32'.94 E	26
32° 28'.45 S 152° 33'.80 E	38
32° 28'.81 S 152° 34'.11 E	42.

**Chart temporarily affected - Aus 810**

**741(T)/2024 AUSTRALIA - TASMAN SEA - Tasman Basin - Light buoy off station**  
Australian Bureau of Meteorology

The special light buoy, *Fl. Y. 2s* (44° 47'.40 S 161° 42'.03 E), is off station.

**Chart temporarily affected - Aus 4601 (INT 601)**

**861(T)/2024 AUSTRALIA - NEW SOUTH WALES - Point Perpendicular - Fish aggregating device off station eastwards**

Department of Primary Industries and Regional Development

The special light buoy, *Fl. Y. 5s FAD (Sep-Jun)* (31° 39'.59 S 152° 56'.23 E), is off station and in position 31° 40'.64 S 152° 55'.85 E.

**Chart temporarily affected - Aus 811**

**900(T)/2024 AUSTRALIA - NEW SOUTH WALES - Port Stephens - Scientific instrument**

*Former Notice - 750(T)/2023 is cancelled*

Manly Hydraulics Laboratory

A special light buoy, *Fl. Y. 3s*, exists in position 32° 41'.77 S 152° 05'.10 E.

**Chart temporarily affected - Aus 209**

**963(T)/2024 AUSTRALIA - NEW SOUTH WALES - Botany Bay to Port Kembla - Survey operations**  
Ocean Infinity Pty Ltd

On or about 16 December 2024, vessel 7 *Oceans* will be conducting survey operations in an area bounded by the following positions:

34° 00'.06 S 151° 19'.10 E  
34° 00'.11 S 151° 36'.84 E  
34° 36'.15 S 151° 13'.71 E  
34° 36'.15 S 151° 04'.95 E  
34° 33'.18 S 150° 55'.24 E  
34° 13'.50 S 151° 00'.65 E  
34° 03'.45 S 151° 12'.06 E.

Subsurface scientific instruments exist on the seabed in the following positions:

33° 59'.5 S 151° 19'.3 E  
33° 59'.5 S 151° 30'.4 E  
34° 08'.3 S 151° 23'.9 E  
34° 09'.3 S 151° 08'.3 E  
34° 16'.6 S 151° 16'.3 E  
34° 19'.0 S 150° 57'.9 E  
34° 26'.9 S 151° 11'.7 E  
34° 31'.2 S 150° 55'.4 E  
34° 36'.9 S 151° 07'.0 E.

Two moorings will be deployed at each of the subsurface locations within 200m of the position. Special light buoys may exist in the vicinity of the above positions.

Mariners are advised to navigate with caution in the area.

**Chart temporarily affected - Aus 195 - Aus 198 - Aus 489 - Aus 808**

**549(T)/2025 AUSTRALIA - NEW SOUTH WALES - Botany Bay to Eden - Survey operations eastwards**  
Gulf Agency Company (Australia)

Vessel *Ocean Titan* is conducting survey operations between the following positions:

34° 01'.94 S 151° 20'.11 E  
34° 29'.06 S 151° 18'.47 E  
34° 32'.06 S 151° 19'.82 E  
34° 37'.12 S 151° 31'.45 E  
34° 39'.97 S 151° 33'.81 E  
34° 48'.88 S 151° 37'.35 E  
34° 55'.10 S 151° 46'.13 E  
34° 58'.91 S 152° 02'.31 E  
35° 08'.09 S 152° 18'.84 E  
35° 18'.39 S 152° 29'.93 E  
36° 46'.36 S 152° 57'.81 E  
37° 18'.79 S 153° 20'.12 E  
37° 16'.25 S 154° 13'.73 E.

Mariners are advised to navigate with caution in the area.

**Chart temporarily affected - Aus 489 - Aus 808 - Aus 4601 (INT 601) - Aus 4602 (INT 602)**

## QUEENSLAND

### **470(T)/2017 AUSTRALIA - QUEENSLAND - North Gardner Bank - Foul ground**

Maritime Safety Queensland Notice 24/2017

A foul ground exists in position 24° 56'.30 S 153° 26.90 E.

**Chart temporarily affected - Aus 816**

### **523(P)/2017 AUSTRALIA - QUEENSLAND - Great Barrier Reef - Joist Reef to Hydrographers Passage - Shoaling**

LADS Flight

Latest survey shows shoaler depths than those charted may exist in an area bounded by the following positions:

19° 27'.1 S 149° 38'.9 E

20° 12'.2 S 149° 39'.1 E

20° 12'.2 S 150° 18'.5 E

19° 39'.2 S 150° 18'.5 E

Charts will updated in due course.

**Chart which will be affected - Aus 821 - Aus 824 - Aus 825**

### **72(T)/2018 AUSTRALIA - QUEENSLAND - Fitzroy Island - Bird Rock - Light buoys**

*Former Notice - 29(T)/2018 is cancelled*

Maritime Safety Queensland Notice 503(T)/2017

Two special light buoys, *Fl. Y. 2-5s* exist in position 16° 55'.43 S 145° 59'.43 E.

**Chart temporarily affected - Aus 830**

### **213(T)/2018 AUSTRALIA - QUEENSLAND - Bribie Island - South Point - Shoaling**

Maritime Safety Queensland

Shoaling exists at the southern end of Bribie Island, with a least depth of *0.5m* in position 27° 06'.18 S 153° 11'.24 E.

Mariners are advised to navigate with caution in the area.

**Chart temporarily affected - Aus 236**

### **488(T)/2019 AUSTRALIA - QUEENSLAND - Karumba - Wreck northwards**

Maritime Safety Queensland Notice 188(T)/2019

A stranded wreck marked by a special light buoy, *Fl. Y. 2-5s*, exists in position 17° 15'.36 S 140° 53'.89 E.

**Chart temporarily affected - Aus 303**

### **548(P)/2019 AUSTRALIA - QUEENSLAND - Hydrographers Passage - Shoaling**

LADS Flight

Latest survey shows shoaler depths than those charted may exist in an area bounded by the following positions:

20° 36'.52 S 150° 04'.39 E

20° 30'.63 S 150° 17'.03 E

20° 23'.93 S 150° 16'.63 E

20° 06'.15 S 150° 04'.79 E

20° 11'.27 S 150° 00'.18 E

20° 21'.88 S 150° 04'.70 E

20° 27'.57 S 150° 09'.82 E

20° 32'.65 S 150° 01'.91 E.

Mariners are advised to navigate with caution in the area.

Charts will be updated in due course.

**Chart which will be affected - Aus 821 - Aus 824**

**1049(P)/2020 AUSTRALIA - TORRES STRAIT - Deliverance Island - Shoaling**  
HMAS *Albany*

Latest survey shows shoaling exists as follows:

<i>Depth</i>	<i>Position</i>
1.1m	9° 32'.89 S 141° 27'.03 E
3.6m	9° 32'.22 S 141° 27'.73 E.

Mariners are advised to navigate with caution in the area.

Charts will be updated in due course.

**Chart which will be affected - Aus 842**

**21(T)/2021 AUSTRALIA - CORAL SEA - Middleton Reef - Unexploded ordnance**  
Parks Australia

An exclusion zone exists in an area bounded by the following positions:

29° 27'.12 S 159° 02'.92 E  
29° 26'.58 S 159° 02'.92 E  
29° 26'.58 S 159° 03'.55 E  
29° 27'.12 S 159° 03'.55 E.

Unexploded ordnance may exist in the area and mariners are advised to navigate with caution.

**Chart temporarily affected - Aus 618**

**64(T)/2021 AUSTRALIA - QUEENSLAND - Gladstone - Auckland Point Wharves - Harbour works**  
Maritime Safety Queensland 360(T)/2019

Construction of a mooring dolphin is in progress off the eastern end of berth No 4 (23° 50'.02 S 151° 15'.91 E) by vessel *AMS Shine* and the barge *M1201* and support vessels.

Vessels and hazards will display appropriate lights and shapes.

Vessels will monitor VHF Ch 13.

Mariners are advised to navigate with caution in the area.

**Chart temporarily affected - Aus 245**

**247(T)/2021 AUSTRALIA - QUEENSLAND - Cape Ferguson - Scientific instrument**  
Australian Institute of Marine Science

A special spar light buoy, Q(4)Y.18s, exists in position 19° 16'.52 S 147° 03'.84 E.

**Chart temporarily affected - Aus 256**

**249(P)/2021 AUSTRALIA - QUEENSLAND - Holt Island to Hexham Island - Shoaling**  
LADS Flight

Latest survey shows shoaler depths than those charted may exist in areas bounded by the following positions:

22° 11'.75 S 150° 22'.51 E  
22° 11'.90 S 150° 22'.99 E  
22° 13'.77 S 150° 22'.25 E  
22° 13'.51 S 150° 21'.60 E;  
and  
22° 00'.22 S 150° 23'.51 E  
22° 01'.04 S 150° 23'.61 E  
22° 02'.68 S 150° 18'.70 E  
22° 01'.44 S 150° 16'.29 E  
22° 00'.19 S 150° 21'.01 E.

Mariners are advised to navigate with caution in the area.

Charts will be updated in due course.

**Chart which will be affected - Aus 260 - Aus 367 - Aus 822**

**337(P)/2021 AUSTRALIA - TORRES STRAIT - Boigu Island - Shoaling**  
HMAS *Leeuwin*

Latest survey shows shoaler depths than those charted may exist in areas bounded by the following positions:

9° 14'.38 S 142° 15'.82 E  
9° 15'.78 S 142° 19'.88 E  
9° 15'.49 S 142° 20'.00 E  
9° 13'.58 S 142° 16'.26 E;  
and  
9° 12'.49 S 142° 15'.50 E  
9° 12'.33 S 142° 13'.73 E  
9° 13'.16 S 142° 13'.24 E  
9° 13'.20 S 142° 15'.21 E.

Mariners are advised to navigate with caution in the area.

Charts will be updated in due course.

**Chart which will be affected - Aus 841**

**738(T)/2021 AUSTRALIA - QUEENSLAND - Fitzroy River - Middle Channel - Scientific instrument**  
Maritime Safety Queensland Notice 31/2021

A special light buoy, Q.Y, exists in position 23° 28'.23 S 150° 56'.37 E.

**Chart temporarily affected - Aus 265**

**741(T)/2021 AUSTRALIA - QUEENSLAND - Fraser Island - Elbow Point - Shoaling**  
Navionics

Depths of less than 1m have been reported in an area bounded by the following positions:

25° 44'.40 S 152° 59'.29 E  
25° 44'.71 S 152° 59'.37 E  
25° 44'.89 S 153° 00'.30 E  
25° 44'.66 S 153° 00'.38 E  
25° 44'.40 S 152° 59'.77 E.

Mariners are advised to navigate with caution in the area.

Charts will be updated in due course.

**Chart temporarily affected - Aus 817**

**980(T)/2021 AUSTRALIA - QUEENSLAND - Fitzroy River - South Channel - Scientific instrument**  
*Former Notice - 661(T)/2016 is cancelled*  
Maritime Safety Queensland Notice 400(T)/2021

A special light buoy, *Fl.Y.4s*, exists in position 23° 30'.23 S 150° 45'.83 E.

**Chart temporarily affected - Aus 819**

**1025(T)/2021 AUSTRALIA - TORRES STRAIT - Great North East Channel - Coconut Island - Scientific instrument**  
*Former Notice - 486(T)/2021 is cancelled*  
Maritime Safety Queensland Notice 427(T)/2021

A special light buoy, *Fl(5)Y.20s*, exists in position 10° 03'.18 S 143° 03'.12 E.

**Chart temporarily affected - Aus 839**

**27(P)/2022 AUSTRALIA - TORRES STRAIT - Boigu Island - Shoaling**  
Australian Institute of Marine Science

The drying area (9° 15'.51 S 142° 06'.09 E) extends 0.27M northwest to position 9° 15'.31 S 142° 05'.91 E.

The reef (9° 11'.96 S 142° 10'.56 E) extends 0.27M south to position 9° 12'.23 S 142° 10'.56 E.

Mariners are advised to navigate with caution in the area.

Charts will be updated in due course.

**Chart which will be affected - Aus 841**

**422(T)/2022 AUSTRALIA - QUEENSLAND - Palm Beach - Light buoy off station**

Maritime Safety Queensland Notice 220(T)/2022

The special light buoy, *Fl.Y.5s* (28° 06'.34 S 153° 28'.42 E), is off station.

**Chart temporarily affected - Aus 814**

**490(T)/2022 AUSTRALIA - QUEENSLAND - Gold Coast Seaway - Light buoy destroyed eastwards**

Maritime Safety Queensland Notice 266/2022

The special light buoy, *Fl.Y.4s* (27° 54'.93 S 153° 27'.59 E), has been destroyed and has sunk in position.

Mariners are advised to navigate with caution in the area.

**Chart temporarily affected - Aus 814**

**788(P)/2022 AUSTRALIA - CORAL SEA - Diamond Islets - Shoaling**

LADS Flight

Shoaler depths than those charted exist in the vicinity of the Diamond Islets.

Charts will be updated in due course.

**Chart which will be affected - Aus 614**

**877(T)/2022 AUSTRALIA - QUEENSLAND - Brisbane River - Hamilton Reach - Wreck**

Maritime Safety Queensland Notice 172(T)/2022

A wreck marked by a special light buoy, *Fl.Y.2.5s*, exists in position 27° 26'.43 S 153° 03'.28 E.

Mariners are advised to navigate with caution in the area.

**Chart temporarily affected - Aus 237**

**893(T)/2022 AUSTRALIA - QUEENSLAND - Moreton Bay - Spitfire Channel - Light beacon unreliable**

Maritime Safety Queensland Notice 103(T)/2021

The light beacon, *Fl.Y.1.5s S1* (27° 02'.88 S 153° 15'.99 E), is unreliable.

**Chart temporarily affected - Aus 236**

**946(T)/2022 AUSTRALIA - QUEENSLAND - Moreton Bay - Redcliffe - Light buoy unlit**

Maritime Safety Queensland Notice 494(T)/2022

The starboard lateral light buoy, *Fl.G.4s* (27° 13'.23 S 153° 07'.27 E), is unlit.

**Chart temporarily affected - Aus 236**

**1026(T)/2022 AUSTRALIA - QUEENSLAND - Upstart Bay - Obstructions**

Maritime Safety Queensland

Obstructions on the seabed exist within a 1M radius of position 19° 44'.13 S 147° 40'.74 E.



Mariners area advised not to anchor or trawl in the area.

**Chart temporarily affected - Aus 826**

**67(T)/2023 AUSTRALIA - QUEENSLAND - Townsville - Shoaling**

Maritime Safety Queensland

Flooding and latest survey shows shoaler depths than those charted may exist in Ross River between positions 19° 15'.36 S 146° 50'.85 E and 19° 17'.00 S 146° 49'.51 E.

Mariners are advised to navigate with caution in the area.

Charts will be updated in due course.

**Chart temporarily affected - Aus 256**

**68(T)/2023 AUSTRALIA - QUEENSLAND - Townsville - Obstructions**

Maritime Safety Queensland Notice 24(T)/2023

Due to recent flooding, floating and submerged obstructions may exist in the coastal waters between Dunk Island (17° 56'.72 S 146° 09'.47 E) and Bowen (20° 00'.54 S 148° 17'.40 E).

Mariners are advised to navigate with caution in the area.

**Chart temporarily affected - Aus 255 - Aus 256 - Aus 268 - Aus 825 - Aus 826 - Aus 827 - Aus 828 - Aus 829**

**99(T)/2023 AUSTRALIA - QUEENSLAND - Brisbane River - Lytton and Quarantine Reach - Obstruction; light buoy**

Maritime Safety Queensland Notice 37(T)/2023

An obstruction marked by a special light buoy, *Fl. Y. 2-5s*, exists in position 27° 24'.74 S 153° 08'.90 E.

**Chart temporarily affected - Aus 237**

**357(T)/2023 AUSTRALIA - QUEENSLAND - Gold Coast Seaway - Wreck eastwards**

Australian Maritime Safety Authority Auscoast Warning 95/2023

A wreck exists in the vicinity of position 27° 53'.8 S 153° 38'.5 E.

**Chart temporarily affected - Aus 814**

**360(T)/2023 AUSTRALIA - QUEENSLAND - Hinchinbrook Channel - Light buoy off station**

Maritime Safety Queensland Notice 168(T)/2023

The starboard lateral light buoy, *Fl. G. 4-3s No15* (18° 29'.63 S 146° 17'.30 E), is off station.

**Chart temporarily affected - Aus 259**

**361(T)/2023 AUSTRALIA - QUEENSLAND - Hinchinbrook Island - Missionary Bay - Light beacon destroyed**

*Former Notice - 319(T)/2023* is cancelled

Maritime Safety Queensland Notice 169(T)/2023

The special light beacon, *Fl. Y. 3s* (18° 15'.20 S 146° 11'.79 E), has been destroyed; a special light buoy, *Fl. Y. 3s*, exists in situ.

Mariners are advised to navigate with caution in the area.

**Chart temporarily affected - Aus 259 - Aus 828**

**362(T)/2023 AUSTRALIA - QUEENSLAND - Orpheus Island - Light buoy removed**

*Former Notice - 275(T)/2023* is cancelled

Australian Institute of Marine Science

The black and yellow light buoy, *Fl. Y. 2-5s* (18° 34'.35 S 146° 29'.87 E), has been temporarily removed for maintenance.

**Chart temporarily affected - Aus 827 - Aus 828**

**398(T)/2023 AUSTRALIA - QUEENSLAND - Caloundra Head - Light unlit**  
Maritime Safety Queensland Notice 187(T)/2023

The light, *LFI.WR.10s 31m 8M* (26° 48'.13 S 153° 09'.04 E), is unlit.

**Chart temporarily affected - Aus 236 - Aus 815**

**484(T)/2023 AUSTRALIA - QUEENSLAND - Fitzroy River - Middle Channel - Scientific instrument**  
Maritime Safety Queensland Notice 229(T)/2023

A special light buoy, *Fl.Y.5s*, exists in position 23° 27'.85 S 150° 56'.60 E.

**Chart temporarily affected - Aus 265 - Aus 819**

**753(T)/2023 AUSTRALIA - QUEENSLAND - Brisbane River - Hamilton Reach - Lights unlit**  
Maritime Safety Queensland Notice 390(T)/2023

The light, *Iso.R.2s (F.Y Day) No13RS* (27° 26'.99 S 153° 05'.49 E), is unlit.

The light beacon, *Q.R (F Day)* (27° 26'.96 S 153° 05'.41 E), is unlit. A temporary port lateral light, *Fl.R.4s*, has been established on the beacon.

Mariners are advised to navigate with caution in the area.

**Chart temporarily affected - Aus 237**

**813(T)/2023 AUSTRALIA - QUEENSLAND - Moreton Bay - Bramble Bay - Pine River - Obstruction; light buoy**  
Maritime Safety Queensland Notice 398(T)/2023

An obstruction marked by a special light buoy, *Fl.Y.2·5s*, exists in position 27° 16'.48 S 153° 04'.19 E.

**Chart temporarily affected - Aus 236**

**17(T)/2024 AUSTRALIA - TORRES STRAIT - Yorke Islands - Scientific instrument**  
Maritime Safety Queensland Notice 592(T)/2023

A special light buoy, *Fl(5)Y.20s*, exists in position 9° 44'.70 S 143° 24'.29 E.

**Chart temporarily affected - Aus 377 - Aus 840**

**250(T)/2024 AUSTRALIA - QUEENSLAND - Great Sandy Strait - Light buoys**  
*Former Notice - 219(T)/2024 is cancelled*  
Maritime Safety Queensland Notice 146/2017, 145(T)/2021, 70/2020

Light buoys exist as follows:

<i>Number</i>	<i>Position</i>	<i>Characteristics</i>
S3	25° 12'.70 S 152° 54'.75 E	<i>Fl.G.2·5s</i>
NG1	25° 20'.20 S 153° 01'.40 E	<i>Fl.G.2·5s.</i>

**Chart temporarily affected - Aus 817**

**324(T)/2024 AUSTRALIA - QUEENSLAND - Abbot Point - Bald Hill - Lights altered**  
Maritime Safety Queensland Notice 175(T)/2024

The light, *WR & Fl.4s 56m 12M (F Day)* (19° 53'.14 S 148° 04'.55 E), has been temporarily altered to *Fl.4s (F Day)*.

**Chart temporarily affected - Aus 255 - Aus 826**

**407(T)/2024 AUSTRALIA - QUEENSLAND - Karumba - Light removed**  
Maritime Safety Queensland Notice 246(T)/2024

The front leading day light (17° 26'.82 S 140° 45'.52 E) has been temporarily removed.

**Chart temporarily affected - Aus 6 - Aus 303**

**408(T)/2024 AUSTRALIA - QUEENSLAND - North Stradbroke Island - Point Lookout - Scientific instruments**  
Sydney Institute of Marine Science

Subsurface scientific instruments exist as follows:

<i>Position</i>	<i>Metres below surface</i>
27° 25'.29 S 153° 35'.08 E	50
27° 25'.34 S 153° 34'.57 E	46
27° 25'.37 S 153° 34'.08 E	45
27° 25'.42 S 153° 33'.31 E	36
27° 25'.44 S 153° 33'.31 E	28.

**Chart temporarily affected - Aus 236 - Aus 814**

**409(T)/2024 AUSTRALIA - QUEENSLAND - One Tree Island to Heron Island - Scientific instruments**  
Sydney Institute of Marine Science

Subsurface scientific instruments exist as follows:

<i>Position</i>	<i>Metres below surface</i>
23° 25'.97 S 151° 55'.61 E	19
23° 26'.20 S 151° 58'.84 E	10
23° 26'.38 S 151° 53'.98 E	9
23° 26'.85 S 151° 54'.74 E	15
23° 28'.26 S 151° 56'.82 E	16
23° 28'.26 S 151° 56'.82 E	8
23° 28'.34 S 151° 58'.69 E	15
23° 28'.76 S 152° 04'.96 E	12
23° 29'.52 S 152° 02'.75 E	16
23° 30'.37 S 152° 02'.43 E	8
23° 30'.52 S 152° 03'.33 E	13
23° 30'.83 S 152° 05'.63 E	18.

**Chart temporarily affected - Aus 819**

**445(T)/2024 AUSTRALIA - QUEENSLAND - Port Douglas - Island Point - Light sectors unreliable**  
Australian Maritime Safety Authority Auscoast Warning 172/2024

Light sectors emanating from the light, *Fl(4)WR.20s 90m 11/9M* (16° 28'.92 S 145° 28'.02 E), should not be relied upon for safe navigation.

**Chart temporarily affected - Aus 830**

**528(T)/2024 AUSTRALIA - QUEENSLAND - Moreton Bay - Chain Banks - Scientific instrument**  
Maritime Safety Queensland Notice 323(T)/2024

A special light buoy, *Fl.Y.4s*, exists in position 27° 25'.79 S 153° 18'.38 E.

**Chart temporarily affected - Aus 236**

**530(T)/2024 AUSTRALIA - QUEENSLAND - Weipa - Albatross Bay - Mooring buoy**  
Maritime Safety Queensland

A lit mooring buoy, *Fl.Y.4s*, exists in position 12° 39'.01 S 141° 43'.09 E.

**Chart temporarily affected - Aus 4 - Aus 301**

**561(T)/2024 AUSTRALIA - QUEENSLAND - Moreton Bay - North East Channel - Light buoy off station**  
Maritime Safety Queensland Notice 338(T)/2024

The port lateral light buoy, *Fl.R.2-5s NE2* (26° 56'.95 S 153° 20'.08 E), is off station.

**Chart temporarily affected - Aus 236 - Aus 814 - Aus 815**

**596(T)/2024 AUSTRALIA - QUEENSLAND - Cleveland Bay - Scientific instruments**

*Former Notice - 249(T)/2024 is cancelled*

Maritime Safety Queensland Notice 387(T)/2024

Special light buoys, *Fl.Y.2-5s*, exist in the following positions:

19° 06'.45 S 146° 32'.48 E  
19° 07'.34 S 146° 52'.92 E  
19° 09'.32 S 146° 52'.10 E  
19° 11'.81 S 146° 49'.07 E  
19° 12'.79 S 146° 47'.55 E  
19° 13'.58 S 146° 56'.98 E  
19° 14'.80 S 146° 48'.90 E.

Mariners are advised to navigate with caution in the area.

**Chart temporarily affected - Aus 256 - Aus 827**

**604(T)/2024 AUSTRALIA - TORRES STRAIT - Richardson Reef - Cook Reef - Scientific instruments**

CSIRO , Maritime Safety Queensland Notice 377(T)/2024

Subsurface scientific instruments exist as follows:

<i>Position</i>	<i>Metres below surface</i>
10° 09'.57 S 143° 02'.39 E	23.2
10° 24'.34 S 141° 07'.25 E	27.6.

**Chart temporarily affected - Aus 700 - Aus 839 - Aus 842**

**711(T)/2024 AUSTRALIA - QUEENSLAND - Yorkeys Knob - Shoaling; light buoy**

Maritime Safety Queensland Notice 444(T)/2024

Shoaling exists at the entrance to the marina and is marked by a special light buoy, *Fl.Y.2-5s*, in position 16° 48'.02 S 145° 43'.01 E.

Mariners are advised to navigate with caution in the area.

**Chart temporarily affected - Aus 262**

**743(T)/2024 AUSTRALIA - QUEENSLAND - Cairns - Trinity Inlet - Wreck**

Maritime Safety Queensland Notice 467(T)/2024

A stranded wreck marked by a special light buoy, *Fl.Y.2-5s*, exists in position 16° 56'.90 S 145° 47'.19 E.

Mariners are advised to navigate with caution in the area.

**Chart temporarily affected - Aus 262**

**780(T)/2024 AUSTRALIA - QUEENSLAND - Great Barrier Reef - Hydrographers Passage to Holmes Reefs - Survey operations**

EGS Survey Pty Ltd

On or about 22 October 2024, vessel *PMG Emerald* will be conducting survey operations in areas bounded by the following positions:

17° 23'.1 S 147° 16'.2 E  
17° 23'.1 S 148° 33'.3 E  
16° 32'.5 S 148° 33'.3 E  
16° 32'.5 S 147° 16'.2 E;  
and  
19° 23'.7 S 149° 57'.2 E  
18° 59'.6 S 150° 44'.7 E  
18° 23'.6 S 150° 24'.3 E  
18° 47'.8 S 149° 36'.8 E.

Mariners are advised to navigate with caution in the area.

**Chart temporarily affected - Aus 615 - Aus 829 - Aus 4602 (INT 602) - Aus 4603 (INT 603) - Aus 4604 (INT 604)**

**862(T)/2024 AUSTRALIA - QUEENSLAND - Brisbane River - Hamilton Reach - Light buoys; harbour works**

*Former Notice - 818(T)/2024 is cancelled*

Maritime Safety Queensland Notice 474(T)/2024, 530(T)/2024

Light buoys, which mark a construction zone, exist as follows:

<i>Position</i>	<i>Remarks</i>
27° 26'.51 S 153° 04'.01 E	<i>Fl. Y. 2s</i>
27° 26'.47 S 153° 03'.73 E	<i>Fl. Y. 3s.</i>

A port lateral light buoy, *Fl. R. 2s*, exists in position 27° 26'.46 S 153° 03'.88 E. The light buoy marks the edge of the navigation channel to the north of the construction zone.

Mariners are advised to navigate with caution in the area.

**Chart temporarily affected - Aus 237**

**866(T)/2024 AUSTRALIA - TORRES STRAIT - Cook Reef - Scientific instruments southwards**

Fugro

Tide gauges exist in positions 10° 27'.06 S 141° 20'.32 E and 10° 28'.40 S 141° 41'.78 E.

Mariners are advised to navigate with caution in the area.

**Chart temporarily affected - Aus 700 - Aus 842**

**901(T)/2024 AUSTRALIA - QUEENSLAND - Brisbane River - Hamilton Reach - Scientific instrument**

Maritime Safety Queensland Notice 565(T)/2024

A special light buoy, *Fl. Y. 3s*, exists in position 27° 26'.49 S 153° 03'.48 E.

Mariners are advised to navigate with caution in the area.

**Chart temporarily affected - Aus 237**

**968(T)/2024 AUSTRALIA - QUEENSLAND - Duyfken Point - Scientific instrument westwards**

Maritime Safety Queensland Notice 578(T)/2024

A special light buoy, *Fl(5) Y. 20s*, exists in position 12° 10'.16 S 140° 16'.80 E.

**Chart temporarily affected - Aus 4603 (INT 603)**

**23(T)/2025 AUSTRALIA - QUEENSLAND - Cape Bowling Green - Light buoy off station**

Maritime Safety Queensland Notice 606(T)/2024

The west cardinal light buoy, *Q(9) 15s* (19° 17'.86 S 147° 22'.65 E), is off station; a special light buoy, *Fl. Y. 2.5s*, exists in situ.

Mariners are advised to navigate west of the special light buoy and to navigate with caution in the area.

**Chart temporarily affected - Aus 827**

**28(T)/2025 AUSTRALIA - QUEENSLAND - Laguna Quays - Shoaling**

*Former Notice - 972(T)/2023 is cancelled*

Maritime Safety Queensland

Shoaling exists within Laguna Quays Marina (20° 36'.0 S 148° 41'.0 E).

Mariners are advised to navigate with caution in the area.

**Chart temporarily affected - Aus 252**

**98(T)/2025 AUSTRALIA - QUEENSLAND - Deception Bay - Light buoy**

Maritime Safety Queensland NTM 010(T)/2025

A special light buoy, *Fl.Y.4s*, exists in position 27° 06'.63 S 153° 07'.32 E.

**Chart temporarily affected - Aus 236**

**135(T)/2025 AUSTRALIA - QUEENSLAND - Brisbane River - Hamilton Reach - Light buoys**

Maritime Safety Queensland Notice 30(T)/2025

The special light buoy, *Fl.Y.3s* (27° 26'.77 S 153° 04'.48 E), has been temporarily relocated to position 27° 26'.80 S 153° 04'.49 E.

The special light buoy, *Fl.Y.3s* (27° 26'.72 S 153° 04'.24 E), has been temporarily relocated to position 27° 26'.73 S 153° 04'.23 E.

Mariners are advised to navigate with caution in the area.

**Chart temporarily affected - Aus 237**

**136(T)/2025 AUSTRALIA - QUEENSLAND - Bundaberg - Burnett Heads - Fish aggregating device off station**

Department of Primary Industries

The special light buoy, *Fl.Y.3s FAD* (24° 39'.27 S 152° 33'.01 E), is off station; a subsurface scientific instrument, 14m below the surface, exists in situ.

**Chart temporarily affected - Aus 817 - Aus 818**

**173(T)/2025 AUSTRALIA - QUEENSLAND - Laguna Quays - Lights unlit**

Maritime Safety Queensland

The leading lights, *F.Bu (F Day)* (20° 36'.19 S 148° 40'.80 E) and *F.Bu (F Day)* (20° 36'.16 S 148° 40'.86 E), are unlit.

**Chart temporarily affected - Aus 252**

**214(T)/2025 AUSTRALIA - QUEENSLAND - Hinchinbrook Channel - Oyster Point - Wreck**

Maritime Safety Queensland Notice 51(T)/2025

A stranded wreck marked by a special light buoy, *Fl.Y.2-5s*, exists in position 18° 16'.23 S 146° 02'.67 E.

Mariners are advised to navigate with caution in the area.

**Chart temporarily affected - Aus 259**

**215(T)/2025 AUSTRALIA - QUEENSLAND - Johnstone River - Light buoys off station**

Maritime Safety Queensland Notice 62(T)/2025

The port lateral light buoys, *Fl.R.3s* (17° 30'.63 S 146° 03'.60 E and 17° 30'.54 S 146° 03'.79 E), are off station.

Mariners are advised to navigate with caution in the area.

**Chart temporarily affected - Aus 258**

**252(T)/2025 AUSTRALIA - QUEENSLAND - Brisbane River - Lytton Rocks Reach - Light unlit**

Maritime Safety Queensland Notice 85(T)/2025

The leading light, *Iso.G.2s (Iso.2s Day) No1RN* (27° 24'.37 S 153° 08'.52 E), is unlit.

**Chart temporarily affected - Aus 236 - Aus 237**

**255(T)/2025 AUSTRALIA - QUEENSLAND - Gold Coast - Main Beach - Light buoy off station eastwards**

Maritime Safety Queensland Notice 601(T)/2024, 84(T)/2025

The special light buoy, *Fl.Y.3s* (27° 57'.60 S 153° 27'.43 E), is off station.

**Chart temporarily affected - Aus 814**

**257(T)/2025 AUSTRALIA - QUEENSLAND - Moreton Bay - Brisbane River - Nav aids destroyed or off station; depths**  
Maritime Safety Queensland

Nav aids in Moreton Bay and the Brisbane River may be destroyed or off station due to recent flooding.

Obstructions may exist and depths may not be consistent with charted information.

Mariners are advised to navigate with caution in the area.

**Chart temporarily affected - Aus 236 - Aus 237**

**332(T)/2025 AUSTRALIA - QUEENSLAND - Moreton Bay - Amity Point - Scientific instrument**  
Maritime Safety Queensland Notice 127(T)/2025

A lit scientific platform, Q. Y, exists in position 27° 23'.35 S 153° 26'.22 E.

Mariners are advised to navigate with caution in the area.

**Chart temporarily affected - Aus 236**

**334(T)/2025 AUSTRALIA - TORRES STRAIT - Holmes Reef - Wreck**  
Maritime Safety Queensland

A stranded wreck marked by a special light buoy, *Fl. Y. 4s*, exists in position 10° 36'.23 S 142° 14'.17 E.

Mariners are advised to navigate with caution in the area.

**Chart temporarily affected - Aus 293 - Aus 299**

**366(T)/2025 AUSTRALIA - QUEENSLAND - Cape Clinton Peninsula - Survey operations**  
Maritime Safety Queensland Notice 159(T)/2025

An unmanned surface vehicle (USV) will be conducting survey operations in an area bounded by the coast and the following positions:

22° 39'.40 S 150° 48'.27 E

22° 39'.40 S 150° 48'.80 E

22° 33'.30 S 150° 48'.80 E

22° 33'.30 S 150° 47'.47 E.

Tide gauges marked by a special light buoy, *Fl. Y. 2s*, exist in position 22° 37'.8 S 150° 48'.1 E.

Mariners are advised to navigate with caution in the area.

**Chart temporarily affected - Aus 248 - Aus 820**

**370(T)/2025 AUSTRALIA - QUEENSLAND - Weipa - Light unlit**  
Maritime Safety Queensland

The light, *Fl. G. 4s SC1* (12° 42'.23 S 141° 40'.04 E), is unlit.

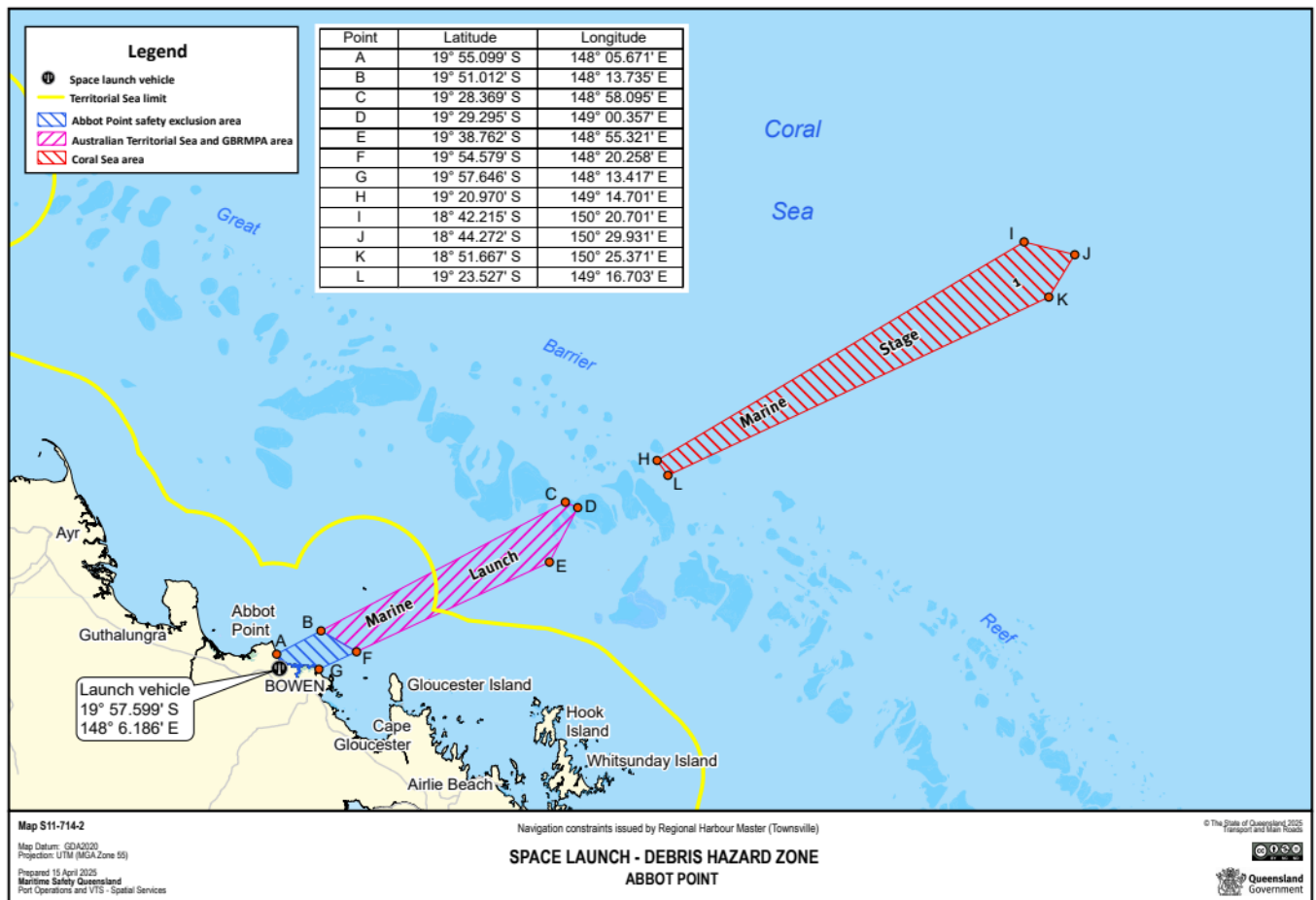
Mariners are advised to navigate with caution in the area.

**Chart temporarily affected - Aus 4**

**406(T)/2025 AUSTRALIA - QUEENSLAND - Abbot Point - Space launch northeastwards**  
*Former Notice - 211(T)/2025 is cancelled*  
Maritime Safety Queensland Notice 173/2025

Bowen Orbital Spaceport is expected to commence space vehicle launch operations from 14 May 2025. Prior to launch, a safety exclusion area will be activated. Abbot Point VTS will broadcast when the safety exclusion area is activated and again to cancel the safety exclusion area via VHF Ch 12 and Ch 16.

Mariners are advised that a person must not anchor, berth, moor or operate a ship (other than a ship owned and/or operated by Queensland Police Service, Maritime Safety Queensland or a ship authorised to assist with the monitoring and management of the safety exclusion area) within the safety exclusion area.



**Chart temporarily affected - Aus 255 - Aus 268 - Aus 825 - Aus 826 - Aus 4602 (INT 602) - Aus 4603 (INT 603) - Aus 4604 (INT 604)**

**408(T)/2025 AUSTRALIA - QUEENSLAND - Karumba - Scientific instrument**  
Maritime Safety Queensland Notice 176(T)/2025

A special light buoy, *Fl.Y.2.5s*, exists in position 17° 21'.29 S 140° 43'.69 E.

**Chart temporarily affected - Aus 303**

**409(T)/2025 AUSTRALIA - QUEENSLAND - Magpie Reef - Light altered**  
Australian Maritime Safety Authority Temporary ATH 2/2025

The light beacon, *Fl.WR.7.5s 8m 10/8M* (13° 48'.37 S 143° 44'.89 E), has been temporarily altered to *Fl.7.5s 8M*.

**Chart temporarily affected - Aus 833 - Aus 834**

**410(T)/2025 AUSTRALIA - QUEENSLAND - North Stradbroke Island - Light buoy off station eastwards**  
*Former Notice - 258(T)/2025 is cancelled*  
Department of Primary Industries

The special light buoy, *Fl.Y.3s FAD* (27° 41'.28 S 153° 36'.83 E), is off station and in position 27° 40'.55 S 153° 36'.17 E.

**Chart temporarily affected - Aus 814**

**439(T)/2025 AUSTRALIA - QUEENSLAND - Gladstone - North Passage Island - Scientific instrument**  
Maritime Safety Queensland Notice 215(T)/2025

On or about 10 June 2025, a special light buoy, *Fl.Y.4s*, will be deployed in position 23° 45'.78 S 151° 09'.94 E.



Mariners are advised to navigate with caution in the area.

**Chart temporarily affected - Aus 245**

**443(T)/2025 AUSTRALIA - QUEENSLAND - Hinchinbrook Island - Missionary Bay - Light buoy off station**  
Maritime Safety Queensland Notice 208(T)/2025

The special light buoy, *Fl.Y.4s* (18° 12'.34 S 146° 09'.36 E), is off station.

Mariners are advised to navigate with caution in the area.

**Chart temporarily affected - Aus 828**

**444(T)/2025 AUSTRALIA - QUEENSLAND - Upstart Bay - Light buoys off station; light buoy unlit**  
Maritime Safety Queensland Notice 204(T)/2025, 205(T)/2025

The following light buoys are off station:

<i>Position</i>	<i>Remarks</i>
19° 43'.59 S 147° 35'.96 E	starboard lateral light buoy, <i>Fl.G.3s</i>
19° 43'.59 S 147° 36'.37 E	port lateral light buoy, <i>Fl.R.4s</i>
19° 43'.35 S 147° 36'.78 E	port lateral light buoy, <i>Fl.R.1·5s</i> .

The special light buoy, *Fl.Y.4·3s* (19° 43'.09 S 147° 37'.60 E), is unlit.

Mariners are advised to navigate with caution in the area.

**Chart temporarily affected - Aus 826**

**482(T)/2025 AUSTRALIA - QUEENSLAND - Bowen - Light buoy unlit**  
Maritime Safety Queensland Notice 69(T)/2025

The special light buoy, *Fl.Y.2·5s* (20° 01'.65 S 148° 15'.76 E), is unlit.

Mariners are advised to navigate with caution in the area.

**Chart temporarily affected - Aus 268**

**484(T)/2025 AUSTRALIA - QUEENSLAND - Brisbane River - Hamilton Reach - Wreck**  
Maritime Safety Queensland Notice 225(T)/2025

A wreck marked by a special light buoy, *Fl.Y.2·5s*, exists in position 27° 26'.89 S 153° 04'.91 E.

Mariners are advised to navigate with caution in the area.

**Chart temporarily affected - Aus 237**

**550(T)/2025 AUSTRALIA - QUEENSLAND - Abbot Point - Scientific instrument**  
Maritime Safety Queensland Notice 262(T)/2025

A tide gauge marked by a special light buoy, *Fl.Y.2s*, exists in position 19° 51'.55 S 148° 05'.21 E.

Mariners are advised to navigate with caution in the area.

**Chart temporarily affected - Aus 255**

**551(T)/2025 AUSTRALIA - QUEENSLAND - Moreton Bay - Chain Banks - Wreck**  
Maritime Safety Queensland Notice 256(T)/2025

A wreck marked by a special light buoy, *Fl.Y.2·5s*, exists in position 27° 23'.78 S 153° 18'.49 E.

Mariners are advised to navigate with caution in the area.

**Chart temporarily affected - Aus 236**

**552(T)/2025 AUSTRALIA - QUEENSLAND - Townsville - Dredging operations; bed levelling operations**  
Maritime Safety Queensland Notice 273(T)/2025

The dredge *Brisbane* is conducting dredging operations in the Sea Channel, Platypus Channel and swing basins.

The vessel *Pacific Titan* will be conducting bed levelling operations in the Platypus Channel and Sea Channel.

Vessels will display appropriate lights and shapes and will monitor VHF Ch 16.

Mariners are advised to navigate with caution in the area and keep well clear.

**Chart temporarily affected - Aus 256**

## NORTHERN TERRITORY

### 183(T)/2022 INDIAN OCEAN - Christmas Island - Mooring buoy off station

L Mioceovich

The mooring buoy (10° 25'.92 S 105° 39'.5 E) is off station and is currently in position 10° 26'.48 S 105° 39'.45 E.

**Chart temporarily affected - Aus 920**

### 867(T)/2023 INDIAN OCEAN - Roo Rise - Light buoy off station

Australian Bureau of Meteorology

The special light buoy, *Fl. Y. 2s* (12° 19'.20 S 108° 30'.75 E), is off station.

**Chart temporarily affected - Aus 4708 (INT 708) - Aus 4723 (INT 723)**

### 893(T)/2023 AUSTRALIA - NORTHERN TERRITORY - Darwin - Mooring buoy off station

Sea Swift

The lit mooring buoy, *Fl. Y. 2·5s* (12° 25'.10 S 130° 47'.74 E), is off station.

**Chart temporarily affected - Aus 25**

### 904(T)/2023 INDIAN OCEAN - Cocos Islands - Light buoy

LINX

A special light buoy, *Fl. Y. 2·5s*, exists in position 12° 08'.65 S 96° 51'.95 E.

**Chart temporarily affected - Aus 607**

### 158(T)/2024 AUSTRALIA - TIMOR SEA - Evans Shoal - Subsea operations eastwards

Santos

On or about 18 February 2024, vessels will be conducting subsea operations in an area bound by the following positions:

9° 52'.72 S 130° 11'.86 E

9° 52'.69 S 130° 19'.18 E

9° 47'.26 S 130° 19'.16 E

9° 47'.29 S 130° 11'.84 E.

Mariners are advised to navigate with caution in the area.

**Chart temporarily affected - Aus 310**

### 532(T)/2024 AUSTRALIA - NORTHERN TERRITORY - Apsley Strait - Medina Inlet - Light buoys off station

*Former Notice - 293(T)/2024 is cancelled*

Northern Territory Government Notice 11(T)/2024

The following light buoys are off station:

<i>Position</i>	<i>Remarks</i>
-----------------	----------------

11° 45'.85 S 130° 39'.80 E	<i>Fl. R. 4s</i>
----------------------------	------------------

11° 46'.36 S 130° 39'.99 E	<i>Fl. R. 4s</i>
----------------------------	------------------

11° 51'.65 S 130° 35'.07 E	<i>Fl. G. 4s.</i>
----------------------------	-------------------

**Chart temporarily affected - Aus 23**

### 565(T)/2024 AUSTRALIA - NORTHERN TERRITORY - Groote Eylandt - Milner Bay - Harbour works; exclusion zone; light unlit

*Former Notice - 368(T)/2024 is cancelled*

Northern Territory Government Notice 13/2024

Works are in progress to repair the main wharf. An exclusion zone exists in an area bounded by the following:

<i>Position</i>	<i>Remarks</i>
-----------------	----------------

13° 51'.56 S 136° 25'.03 E	
----------------------------	--

13° 51'.67 S 136° 25'.03 E  
13° 51'.73 S 136° 25'.06 E marked by special light buoy, *Fl. Y. 2s*  
13° 51'.80 S 136° 24'.96 E marked by special light buoy, *Fl. Y. 2s*  
13° 51'.57 S 136° 24'.82 E marked by special light buoy, *Fl. Y. 2s*  
13° 51'.51 S 136° 24'.92 E marked by special light buoy, *Fl. Y. 2s*.

Only vessels involved in construction activities, vessels under the control of Milner Port, the Director of Marine Safety and the NT Police are permitted to enter the area.

The light, *F.R* (13° 51'.55 S 136° 24'.92 E), is unlit.

Mariners are advised to navigate with caution in the area.

#### **Chart temporarily affected - Aus 14**

#### **680(T)/2024 AUSTRALIA - NORTHERN TERRITORY - Darwin - Scientific instruments**

*Former Notice* - 610(T)/2024 is cancelled

Northern Territory Government Notice 68(T)/2024, 69(T)/2024

Special light buoys, *Fl. Y. 1·5s*, exist in the following positions:

12° 29'.50 S 130° 53'.75 E  
12° 29'.67 S 130° 53'.80 E  
12° 29'.67 S 130° 54'.15 E  
12° 29'.42 S 130° 54'.14 E.

Special light buoys, *Fl. Y. 4s*, exist in the following positions:

12° 29'.61 S 130° 53'.75 E  
12° 29'.48 S 130° 54'.15 E.

#### **Chart temporarily affected - Aus 26**

#### **909(T)/2024 AUSTRALIA - NORTHERN TERRITORY - Bathurst Island - Tide gauges; buoys westwards**

*Former Notice* - 874(T)/2024 is cancelled

MMA Offshore , Tidewater Offshore Operations

Post hydrographic survey, subsurface tide gauges and buoys may exist in the vicinity of the following positions:

10° 58'.5 S 129° 00'.0 E  
10° 58'.4 S 129° 11'.7 E  
10° 57'.7 S 129° 23'.5 E  
11° 10'.1 S 129° 00'.3 E  
11° 08'.1 S 129° 12'.4 E  
11° 06'.3 S 129° 31'.2 E  
11° 21'.7 S 129° 03'.9 E  
11° 18'.6 S 129° 15'.2 E  
11° 15'.9 S 129° 24'.5 E  
11° 11'.8 S 129° 44'.0 E  
11° 24'.4 S 129° 35'.6 E  
11° 23'.0 S 129° 47'.7 E  
11° 35'.7 S 129° 42'.8 E  
11° 33'.6 S 129° 52'.5 E.

Mariners are advised to navigate with caution in the area.

#### **Chart temporarily affected - Aus 309 - Aus 310 - Aus 311**

#### **910(T)/2024 AUSTRALIA - NORTHERN TERRITORY - Darwin - Scientific instruments**

*Former Notice* - 328(T)/2024 is cancelled

O2 Marine

Special light buoys, *Fl. Y. 4s*, exist in the following positions:

12° 23'.34 S 130° 39'.82 E  
12° 23'.46 S 130° 48'.64 E  
12° 23'.78 S 130° 44'.15 E  
12° 24'.54 S 130° 45'.06 E  
12° 25'.95 S 130° 48'.92 E  
12° 26'.16 S 130° 46'.22 E  
12° 28'.20 S 130° 46'.08 E  
12° 29'.26 S 130° 47'.99 E

12° 29'.72 S 130° 52'.97 E  
12° 30'.09 S 130° 52'.48 E  
12° 32'.91 S 130° 52'.50 E.

**Chart temporarily affected - Aus 25 - Aus 26**

**39(T)/2025 AUSTRALIA - NORTHERN TERRITORY - Fish Reef - Light unlit**

Northern Territory Government Notice 23(T)/2024

The light, *LFl.WR.10s 10/8M* (12° 25'.93 S 130° 26'.56 E), is unlit.

**Chart temporarily affected - Aus 309 - Aus 316**

**40(T)/2025 AUSTRALIA - NORTHERN TERRITORY - Orontes Reef - Obstruction**

Northern Territory Government Notice 2(T)/2025

A ghost net exists in position 11° 02'.88 S 132° 04'.94 E. An electronic beacon has been attached to the ghost net.

Mariners are advised to navigate with caution in the area.

**Chart temporarily affected - Aus 18 - Aus 721**

**41(T)/2025 AUSTRALIA - TIMOR SEA - Evans Shoal - Drill rig eastwards**

*Former Notice - 871(T)/2024* is cancelled

MODU *Valaris MS-1*

Drill rig *Valaris MS-1* is conducting drilling operations in position 9° 47'.86 S 130° 12'.44 E.

**Chart temporarily affected - Aus 310**

**139(T)/2025 AUSTRALIA - NORTHERN TERRITORY - Groote Eylandt - Bartalumba Bay to Milner Bay - Nav aids**

Northern Territory Government Notice 22(T)/2024, 3(T)/2025

Daytime mooring buoys, *Fl.Y.3s*, exist in the following positions:

13° 51'.97 S 136° 24'.97 E  
13° 51'.87 S 136° 25'.13 E  
13° 48'.97 S 136° 28'.05 E  
13° 48'.56 S 136° 27'.58 E  
13° 48'.35 S 136° 28'.38 E  
13° 48'.44 S 136° 28'.87 E  
13° 48'.89 S 136° 28'.27 E  
13° 48'.77 S 136° 27'.80 E  
13° 48'.15 S 136° 27'.14 E  
13° 48'.07 S 136° 28'.04 E.

A cyclone mooring buoy, *Fl.Y.3s*, exists in position 13° 48'.77 S 136° 27'.33 E.

Light buoys have been established to mark a channel to access Milner Bay boat ramp as follows:

<i>Position</i>	<i>Remarks</i>
13° 51'.85 S 136° 24'.97 E	port lateral light buoy, <i>Q.R No1</i>
13° 51'.87 S 136° 24'.98 E	starboard lateral light buoy, <i>Q.G No2</i>
13° 51'.82 S 136° 25'.02 E	port lateral light buoy, <i>Q.R No3</i>
13° 51'.83 S 136° 25'.05 E	starboard lateral light buoy, <i>Q.G No4</i>
13° 51'.77 S 136° 25'.08 E	port lateral light buoy, <i>Q.R No5</i>
13° 51'.77 S 136° 25'.12 E	starboard lateral light buoy, <i>Q.G No6</i>
13° 51'.71 S 136° 25'.07 E	port lateral light buoy, <i>Q.R No7</i>
13° 51'.71 S 136° 25'.10 E	starboard lateral light buoy, <i>Q.G No8</i>
13° 51'.66 S 136° 25'.05 E	port lateral light buoy, <i>Q.R No9</i>
13° 51'.65 S 136° 25'.07 E	starboard lateral light buoy, <i>Q.G No10</i> .

**Chart temporarily affected - Aus 14**

**300(T)/2025 AUSTRALIA - TIMOR SEA - Vulcan Shoal - Drill rig northeastwards**

*Valaris 247*

Drill rig *Valaris 247* is conducting drilling operations in position 12° 30'.07 S 124° 25'.09 E, 500m clearance is requested.

**Chart temporarily affected - Aus 314 - Aus 319**

**371(T)/2025 AUSTRALIA - NORTHERN TERRITORY - Darwin - Scientific instruments**

Northern Territory Government Notice 41(T)/2025

Special light buoys, *Fl. Y. 4s*, exist in positions 12° 29'.58 S 130° 54'.17 E and 12° 29'.72 S 130° 54'.32 E.

**Chart temporarily affected - Aus 26**

**413(T)/2025 AUSTRALIA - TIMOR SEA - Sahul Banks - FPSO decommissioning**

*Former Notice* - 369(T)/2024 is cancelled  
Petrofac Australia

Works associated with the decommissioning of the FPSO *Northern Endeavour* (10° 36'.89 S 125° 59'.13 E) are in progress and lighting may not be as charted.

*Note:* Charted name of FPSO, *Laminaria*, is incorrect.

Mariners should navigate with caution in the area.

**Chart temporarily affected - Aus 312**

**448(T)/2025 AUSTRALIA - NORTHERN TERRITORY - Lynedoch Bank - Light buoy northwestwards**

Santos

A special light buoy, *Fl. Y*, exists in position 9° 49'.28 S 130° 16'.17 E.

**Chart temporarily affected - Aus 310**

**491(T)/2025 AUSTRALIA - NORTHERN TERRITORY - Darwin - Harbour works; dredging operations**

*Former Notice* - 447(T)/2025 is cancelled  
Northern Territory Government Notice 57/2025

A closed waters area marked by special buoys for dredging and harbour works has been established in the vicinity of position 12° 29'.50 S 130° 53'.75 E.

Entry into or transit through closed waters is prohibited to all vessels except those authorised.

Mariners are advised to navigate with caution in the area.

**Chart temporarily affected - Aus 26**

**492(T)/2025 AUSTRALIA - TIMOR SEA - Evans Shoal - Subsea operations eastwards**

Santos

On or about 13 June 2025, vessels will be conducting installation and commissioning operations of the Floating Production, Storage and Offloading (FPSO) vessel in the vicinity of 9° 49'.28 S 130° 16'.15 E.

Mariners are advised to navigate with caution in the area.

**Chart temporarily affected - Aus 310**

**555(T)/2025 AUSTRALIA - NORTHERN TERRITORY - Gove Harbour - Harbour Islet - Light buoy unlit**

Rio Tinto

The starboard lateral light buoy, *Fl. G. 4s* (12° 11'.78 S 136° 41'.20 E), is unlit.

Mariners are advised to navigate with caution in the area.

**Chart temporarily affected - Aus 15**

## WESTERN AUSTRALIA

### **1078(P)/2015 AUSTRALIA - WESTERN AUSTRALIA - East Holothuria Reef - Shoaling** HMAS Mermaid

Depths less than 6m have been reported in the vicinity of position 13° 33'.6 S 126° 10'.8 E.

Mariners are advised to navigate with caution in the area.

**Chart which will be affected - Aus 318 - Aus 319 - Aus 727 - Aus 728**

### **291(T)/2019 AUSTRALIA - WESTERN AUSTRALIA - Barrow Island - Well abandonment works northwestwards** Chevron Australia

Sixteen anchors and mooring lines have been installed around the well in position 20° 24'.49 S 114° 50'.95 E.

Mariners are advised to navigate with caution in the area.

**Chart temporarily affected - Aus 328**

### **1285(T)/2019 AUSTRALIA - WESTERN AUSTRALIA - Port Walcott - Outer North Channel - Tide gauge** Australian Maritime Safety Authority Auscoast Warning 288/2016

A tide gauge marked by a special light buoy, Q, exists in position 20° 24'.95 S 117° 23'.35 E.

**Chart temporarily affected - Aus 55 - Aus 326**

### **212(T)/2020 AUSTRALIA - WESTERN AUSTRALIA - Rottnest Island - Scientific instruments northwestwards** CSIRO

Subsurface scientific instruments exist as follows:

<i>Position</i>	<i>Depth below surface</i>
31° 38'.8 S 115° 11'.8 E	24m
31° 43'.7 S 115° 02'.5 E	23m
31° 45'.9 S 114° 57'.9 E	496m
31° 59'.0 S 115° 13'.7 E	180m
31° 59'.4 S 115° 23'.1 E	22m
32° 00'.0 S 115° 25'.0 E	46m

**Chart temporarily affected - Aus 754**

### **623(T)/2022 AUSTRALIA - WESTERN AUSTRALIA - Bunbury - Koombana Bay - Harbour works** Department of Transport WA Notice 1852/2022

On or about 17 August 2022, works associated with the demolition and construction of the boat ramp in the vicinity of position 33° 18'.71 S 115° 38'.28 E will commence.

The works area will be marked by special light buoys.

The barge *TMC1* and support vessels will be conducting piling operations and unlit piles may exist in the area.

All vessels will display appropriate lights and shapes and will monitor VHF Ch 16.

The boat ramp will be closed for the duration of the works.

Mariners are advised to navigate with caution in the area.

**Chart temporarily affected - Aus 115**

### **1032(T)/2022 AUSTRALIA - WESTERN AUSTRALIA - Geographe Bay - Scientific instruments** *Former Notice - 800(T)/2022 is cancelled* Department of Transport WA Notice 2792/2022

Special light buoys, *Fl. Y. 2.5s*, exist in the following positions:

33° 35'.49 S 115° 06'.99 E  
33° 36'.01 S 115° 14'.99 E  
33° 37'.62 S 115° 20'.28 E.

**Chart temporarily affected - Aus 755**

**1036(T)/2022 AUSTRALIA - WESTERN AUSTRALIA - Mullaloo - Scientific instruments**

Department of Transport WA Notice 5463/2022

Scientific instruments, 4m below the surface, exist in positions 31° 45'.82 S 115° 42'.64 E and 31° 47'.43 S 115° 42'.34 E.

**Chart temporarily affected - Aus 754**

**293(T)/2023 AUSTRALIA - WESTERN AUSTRALIA - Dampier Archipelago - Legendre Island - Scientific instrument northwards**

*Former Notice - 366(T)/2022 is cancelled*

O2 Marine

A scientific instrument exists on the seabed in position 20° 17'.89 S 116° 51'.58 E.

**Chart temporarily affected - Aus 57 - Aus 327**

**367(T)/2023 AUSTRALIA - WESTERN AUSTRALIA - Gantheaume Bay - Scientific instrument northwestwards**

GHD

A subsurface scientific instrument, 0.5m above the seabed, exists in position 27° 26'.89' S 113° 56'.97' E.

**Chart temporarily affected - Aus 332**

**535(T)/2023 AUSTRALIA - WESTERN AUSTRALIA - Bonaparte Archipelago - Bernouilli Island - Obstruction**

Australian Maritime Safety Authority

An obstruction has been reported in position 14° 59'.56 S 124° 45'.49 E.

Mariners are advised to navigate with caution in the area.

**Chart temporarily affected - Aus 730**

**625(T)/2023 AUSTRALIA - WESTERN AUSTRALIA - Kalbarri - Scientific instrument**

Department of Transport WA Notice 5748(T)/2023

A subsurface scientific instrument, 0.66m above the seabed, exists in position 27° 24'.70 S 114° 02'.79 E.

**Chart temporarily affected - Aus 332**

**627(T)/2023 AUSTRALIA - WESTERN AUSTRALIA - Lagrange Bay - Scientific instruments**

Department of Transport WA Notice 5749(T)/2023

Subsurface scientific instruments exist in the following positions:

18° 35'.12 S 121° 44'.06 E  
18° 35'.54 S 121° 44'.98 E  
18° 35'.85 S 121° 45'.81 E  
18° 36'.01 S 121° 43'.89 E  
18° 36'.43 S 121° 46'.98 E  
18° 36'.48 S 121° 47'.17 E  
18° 36'.49 S 121° 42'.92 E  
18° 36'.57 S 121° 46'.91 E  
18° 36'.59 S 121° 45'.45 E  
18° 37'.00 S 121° 44'.32 E  
18° 37'.00 S 121° 46'.69 E  
18° 37'.05 S 121° 46'.95 E  
18° 37'.20 S 121° 46'.31 E  
18° 37'.25 S 121° 47'.09 E  
18° 37'.66 S 121° 45'.68 E  
18° 37'.81 S 121° 43'.16 E



18° 38'.06 S 121° 44'.56 E  
18° 38'.53 S 121° 46'.45 E  
18° 38'.72 S 121° 45'.65 E  
18° 38'.83 S 121° 46'.83 E  
18° 39'.12 S 121° 44'.44 E  
18° 39'.15 S 121° 43'.16 E  
18° 39'.47 S 121° 46'.19 E  
18° 39'.76 S 121° 45'.30 E.

Mariners are advised to navigate with caution in the area.

**Chart temporarily affected - Aus 324**

**630(T)/2023 AUSTRALIA - WESTERN AUSTRALIA - Torbay to King George Sound - Scientific instruments**  
Department of Transport WA Notice 5742/2023

Scientific instruments marked by special light buoys, *Fl. Y.3s*, exist in the following positions:

35° 04'.92 S 117° 49'.18 E  
35° 05'.38 S 117° 57'.75 E  
35° 05'.45 S 117° 57'.76 E.

**Chart temporarily affected - Aus 118**

**767(T)/2023 AUSTRALIA - WESTERN AUSTRALIA - Carnarvon - Obstructions**  
Department of Transport WA Notice 5769/2023

Pylons, 30cm below the surface, exist in the vicinity of position 24° 54'.35 S 113° 38'.61 E.

Mariners are advised to navigate with caution in the area.

**Chart temporarily affected - Aus 73**

**774(T)/2023 AUSTRALIA - WESTERN AUSTRALIA - Rottnest Island - Thomson Bay - Rock**  
Department of Transport WA Notice 5796/2023

A rock outcrop has been reported in position 31° 59'.82 S 115° 32'.64 E.

Mariners are advised to navigate with caution in the area.

**Chart temporarily affected - Aus 112**

**820(T)/2023 AUSTRALIA - WESTERN AUSTRALIA - Browse Island - Light altered northwestwards**  
Australian Maritime Safety Authority Auscoast Warning 213/2023

The light, *Mo(U)15s 15M* (13° 56'.37 S 123° 17'.87 E), has been temporarily altered to *Mo(U)15s 10M*.

**Chart temporarily affected - Aus 319 - Aus 320 - Aus 4603 (INT 603) - Aus 4722 (INT 722)**

**822(T)/2023 AUSTRALIA - WESTERN AUSTRALIA - Dampier - Mermaid Sound - Scientific instrument**  
Pilbara Ports Authority Notice D23(T)/2023

A special light buoy, *Fl(5)Y.20s*, exists in position 20° 30'.81 S 116° 45'.56 E.

**Chart temporarily affected - Aus 57**

**900(T)/2023 AUSTRALIA - WESTERN AUSTRALIA - Lowendal Islands - Light altered**  
Santos

The light, *Fl.3s* (20° 38'.04 S 115° 34'.34 E), has been temporarily altered to *Fl.Y.2.5s*.

**Chart temporarily affected - Aus 65 - Aus 742**

**1065(T)/2023 AUSTRALIA - WESTERN AUSTRALIA - Fremantle - Arthur Head - Scientific instrument**  
Department of Transport WA Notice 5895/2023

A subsurface scientific instrument, 5.5m below the surface, exists in positions 32° 03'.31 S 115° 44'.16 E.

**Chart temporarily affected - Aus 112 - Aus 117**

**25(T)/2024 AUSTRALIA - WESTERN AUSTRALIA - Dampier Archipelago - Brigadier Islands - Light buoy northwards**

MetOcean

A special light buoy, *Fl(5)Y.20s*, exists in position 20° 16'.78 S 116° 33'.71 E.

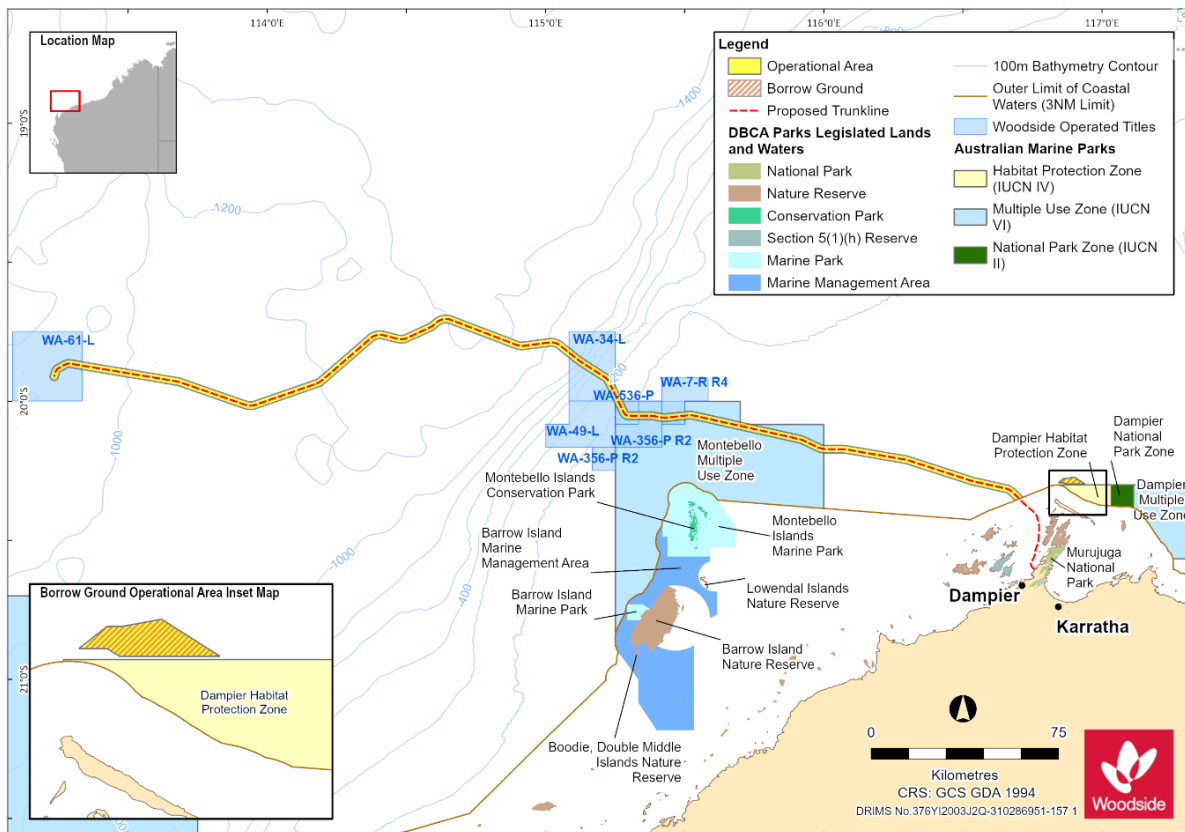
**Chart temporarily affected - Aus 327 - Aus 742**

**27(T)/2024 AUSTRALIA - WESTERN AUSTRALIA - Exmouth Plateau to Dampier - Pipe laying operations Subsea 7**

Vessel *Seven Oceanic* is conducting pipe laying operations in the Scarborough Field between approximate positions 19° 45'.0 S 113° 07'.0 E and 20° 15'.0 S 116° 28'.0 E.

Mariners are advised to navigate with caution in the area. 0.27M clearance requested.

*Note:* For e-notice users, please see full edition for map.



**Chart temporarily affected - Aus 327 - Aus 328 - Aus 742 - Aus 4722 (INT 722) - Aus 4723 (INT 723)**

**31(T)/2024 AUSTRALIA - WESTERN AUSTRALIA - Laurance Reef to Quinns Rocks - Scientific instruments**  
Department of Transport WA Notice 5902/2023

Special light buoys, *Fl.Y.2-5s*, exist in the following positions:

31° 39'.60 S 115° 39'.88 E

31° 40'.63 S 115° 40'.24 E

31° 33'.28 S 115° 37'.30 E.

**Chart temporarily affected - Aus 754**

**33(T)/2024 AUSTRALIA - WESTERN AUSTRALIA - Norwegian Bay - Beacon obscured**  
Department of Transport WA Notice 5805/2023

The rear leading beacon is obscured and currently not visible.

The recommended track may no longer indicate the best passage through the reef.

Mariners are advised to navigate with caution in the area.

**Chart temporarily affected - Aus 745**

**70(T)/2024 AUSTRALIA - WESTERN AUSTRALIA - Cockburn Sound - Medina Channel - Light beacon destroyed**  
Fremantle Ports Notice 15/2023

The port lateral light beacon, *Fl.R.2s C* (32° 09'.90 S 115° 45'.51 E), has been destroyed; a port lateral light buoy, *Fl.R.2s*, exists in situ.

**Chart temporarily affected - Aus 117**

**167(T)/2024 AUSTRALIA - WESTERN AUSTRALIA - Rottnest Island - Point Clune - Scientific instrument northwards**  
MMA Offshore

A special light buoy, *Fl.Y*, exists in position 31° 57'.072 S 115° 31'.62 E.

**Chart temporarily affected - Aus 112 - Aus 754**

**223(T)/2024 AUSTRALIA - WESTERN AUSTRALIA - Bateman Bay to Bills Bay - Scientific instruments**  
Sydney Institute of Marine Science

Subsurface scientific instruments exist as follows:

<i>Position</i>	<i>Metres below surface</i>
23° 02'.58 S 113° 47'.45 E	4.9
23° 02'.86 S 113° 47'.16 E	14.6
23° 02'.88 S 113° 49'.06 E	13
23° 02'.89 S 113° 47'.53 E	17.2
23° 02'.89 S 113° 47'.91 E	18.1
23° 02'.89 S 113° 48'.28 E	14.2
23° 02'.89 S 113° 48'.67 E	17.1
23° 05'.09 S 113° 48'.53 E	8.7
23° 07'.27 S 113° 45'.09 E	3
23° 07'.28 S 113° 45'.43 E	7
23° 07'.42 S 113° 41'.37 E	66
23° 07'.45 S 113° 41'.83 E	66
23° 07'.48 S 113° 44'.95 E	3
23° 07'.50 S 113° 42'.28 E	64
23° 07'.57 S 113° 42'.72 E	60
23° 07'.61 S 113° 43'.58 E	42
23° 07'.62 S 113° 43'.15 E	52
23° 07'.64 S 113° 44'.08 E	30
23° 07'.64 S 113° 46'.13 E	2
23° 08'.15 S 113° 45'.22 E	8.

**Chart temporarily affected - Aus 745 - Aus 746**

**224(T)/2024 AUSTRALIA - WESTERN AUSTRALIA - Cape Range - Tantabiddi - Scientific instruments**  
Sydney Institute of Marine Science

Subsurface scientific instruments exist as follows:

<i>Position</i>	<i>Metres below surface</i>
21° 52'.83 S 113° 54'.33 E	86
21° 53'.03 S 113° 54'.67 E	84
21° 53'.31 S 113° 55'.03 E	75
21° 53'.46 S 113° 55'.44 E	57
21° 53'.71 S 113° 55'.79 E	36.

**Chart temporarily affected - Aus 328 - Aus 329 - Aus 745**

**259(T)/2024 AUSTRALIA - WESTERN AUSTRALIA - Fremantle - Scientific instrument**  
Department of Transport WA Notice 5994/2024

A subsurface scientific instrument, 0.5m above the seabed, exists in position 32° 03'.85 S 115° 43'.37 E.

Mariners are advised to navigate with caution in the area.

**Chart temporarily affected - Aus 112 - Aus 117**

**263(T)/2024 AUSTRALIA - WESTERN AUSTRALIA - Port Hedland - Light beacons altered**  
Pilbara Ports Authority Notice PH4/2024

The starboard lateral light beacon, *Fl.G.4s 20m No15* (20° 10'.40 S 118° 30'.49 E), has been temporarily altered to *Fl.G.2s 20m No15*.

The port lateral light beacon, *Fl.R.4s 20m No16* (20° 10'.33 S 118° 30'.63 E), has been temporarily altered to *Fl.R.2s 20m No16*.

**Chart temporarily affected - Aus 53**

**265(T)/2024 AUSTRALIA - WESTERN AUSTRALIA - Thevenard Island - Obstruction**  
Chevron Australia

An obstruction, 15m below the surface, exists in position 21° 24'.17 S 115° 02'.81 E.

**Chart temporarily affected - Aus 64 - Aus 328 - Aus 743**

**297(T)/2024 AUSTRALIA - WESTERN AUSTRALIA - Cape Naturaliste - Scientific instrument northwestwards**  
*Former Notice - 821(T)/2023 is cancelled*  
JASCO Applied Sciences (Australia)

A subsurface scientific instrument, 5m above the seabed, exists in position 33° 20'.07 S 114° 46'.94 E.

**Chart temporarily affected - Aus 335**

**415(T)/2024 AUSTRALIA - WESTERN AUSTRALIA - Bathurst Island - Survey operations westwards**  
Guardian Geomatics

On or about 3 June 2024, vessel *Offshore Surveyor* will be conducting survey operations in an area bounded by the following positions:

11° 35'.78 S 129° 42'.30 E  
11° 14'.63 S 129° 26'.30 E  
11° 21'.65 S 129° 04'.19 E  
11° 57'.79 S 129° 21'.84 E  
12° 06'.07 S 129° 49'.89 E  
11° 49'.26 S 129° 24'.46 E  
11° 37'.97 S 129° 16'.65 E  
11° 37'.92 S 129° 34'.00 E.

Tide gauges, marked by special light buoys *Fl.Y.5s*, will be deployed in the following positions:

11° 14'.4 S 129° 26'.8 E  
11° 18'.0 S 129° 15'.3 E  
11° 21'.7 S 129° 03'.9 E  
11° 22'.0 S 129° 32'.5 E  
11° 28'.2 S 129° 23'.7 E  
11° 30'.3 S 129° 07'.9 E  
11° 35'.7 S 129° 42'.8 E  
11° 38'.3 S 129° 32'.1 E  
11° 38'.3 S 129° 22'.2 E  
11° 39'.2 S 129° 12'.2 E  
11° 49'.3 S 129° 24'.6 E  
11° 59'.2 S 129° 24'.3 E  
11° 59'.5 S 129° 39'.5 E.

Mariners are advised to navigate with caution in the area.

**Chart temporarily affected - Aus 309 - Aus 311**

**418(T)/2024 AUSTRALIA - WESTERN AUSTRALIA - Geraldton - Obstruction; light buoy**  
Mid West Ports Notice 15/2024

An obstruction marked by a special light buoy, *Fl.Y.3s*, exists in position 28° 46'.30 S 114° 35'.57 E.

Mariners are advised to navigate with caution in the area and keep well clear.

**Chart temporarily affected - Aus 81**

**493(T)/2024 AUSTRALIA - WESTERN AUSTRALIA - Dampier Archipelago - Mooring buoy unlit northwards**  
Vermilion Oil and Gas Australia

Lit mooring buoy, *Mo(U)Y.15s* (20° 06'.9 S 116° 26'.0 E), is unlit.

**Chart temporarily affected - Aus 327 - Aus 742**

**495(T)/2024 AUSTRALIA - WESTERN AUSTRALIA - Exmouth - Scientific instrument**  
Department of Transport WA Notice 6097/2024

A scientific instrument exists on the seabed in position 21° 57'.59 S 114° 09'.11 E.

**Chart temporarily affected - Aus 744 - Aus 745**

**500(T)/2024 AUSTRALIA - WESTERN AUSTRALIA - Peron Peninsula - Guichenault Point - Scientific instruments**  
Department of Transport WA Notice 6063/2023

Subsurface scientific instruments, 5m below the surface, exist in the following positions:

25° 34'.55 S 113° 37'.54 E  
25° 34'.56 S 113° 36'.35 E  
25° 35'.09 S 113° 37'.56 E  
25° 35'.10 S 113° 36'.36 E  
25° 35'.26 S 113° 37'.01 E  
25° 35'.63 S 113° 37'.56 E  
25° 35'.64 S 113° 36'.38 E  
25° 36'.17 S 113° 37'.58 E  
25° 36'.19 S 113° 36'.39 E  
25° 36'.56 S 113° 37'.95 E  
25° 36'.71 S 113° 37'.58 E  
25° 36'.73 S 113° 36'.40 E  
25° 36'.91 S 113° 37'.99 E  
25° 37'.25 S 113° 37'.60 E  
25° 37'.27 S 113° 36'.40 E.

Mariners are advised to navigate with caution in the area and keep well clear.

**Chart temporarily affected - Aus 331**

**613(T)/2024 AUSTRALIA - WESTERN AUSTRALIA - Cape Preston - Light buoy northwestwards**  
Australian Maritime Safety Authority , Pilbara Ports Authority

A pink spherical light buoy, *Q.Y.*, exists in position 20° 35'.81 S 116° 04'.58 E.

Mariners are advised to navigate with caution in the area.

**Chart temporarily affected - Aus 327 - Aus 742**

**620(T)/2024 AUSTRALIA - WESTERN AUSTRALIA - Princess Royal Harbour - Marine farm; light buoys**  
*Former Notice - 111(T)/2023 is cancelled*  
Department of Transport WA Notice 6130/2024

A marine farm marked by special light buoys, *Fl.Y.4s*, exists in an area bounded by the following positions:

35° 04'.22 S 117° 54'.51 E  
35° 04'.22 S 117° 54'.61 E  
35° 04'.21 S 117° 54'.61 E  
35° 04'.21 S 117° 55'.00 E  
35° 04'.09 S 117° 55'.00 E  
35° 04'.09 S 117° 55'.20 E  
35° 04'.36 S 117° 55'.20 E  
35° 04'.36 S 117° 55'.14 E  
35° 04'.48 S 117° 55'.14 E  
35° 04'.48 S 117° 54'.51 E.

**Chart temporarily affected - Aus 118**

**621(T)/2024 AUSTRALIA - WESTERN AUSTRALIA - Wilson Head - Scientific instruments**

*Former Notice* - 631(T)/2023 is cancelled

Department of Transport WA Notice 5793/2024

Two special light buoys, *Fl.Y.2-5s*, exist in the vicinity of position 35° 02'.93 S 117° 21'.82 E.

**Chart temporarily affected - Aus 336**

**685(T)/2024 AUSTRALIA - WESTERN AUSTRALIA - Yampi Sound - Comber Rock - Light buoy unlit**

Kimberley Ports Authority Notice 10/2024

The east cardinal light buoy, *Q(3)10s* (16° 06'.42 S 123° 39'.66 E), is unlit.

**Chart temporarily affected - Aus 40 - Aus 732 - Aus 733**

**876(T)/2024 AUSTRALIA - WESTERN AUSTRALIA - Dampier Archipelago - Roly Rock - Drill rig**

Australian Maritime Safety Authority Auscoast 332/2024

Drill rig *Q7000* is moored in position 20° 30'.11 S 116° 26'.00 E.

**Chart temporarily affected - Aus 57 - Aus 327 - Aus 742**

**877(T)/2024 AUSTRALIA - WESTERN AUSTRALIA - Geraldton - Batavia Coast Boat Harbour - Harbour works**

Department of Transport WA Notice 6221/2024

Works associated with the construction of new marina facilities are in progress in the vicinity of position 28° 46'.06 S 114° 36'.71 E.

The works area is marked by special light buoys, *Fl.Y.2-5s*.

All vessels involved in the works will display appropriate lights and shapes and will monitor VHF Ch 16.

Mariners are advised to navigate with caution in the area.

**Chart temporarily affected - Aus 81**

**880(T)/2024 AUSTRALIA - WESTERN AUSTRALIA - Thevenard Island to Muiron Islands - Subsea operations northwestwards**

Technip FMC, Sapura Energy Australia

On or about 15 November 2024, vessel *Skandi Hercules* will be conducting subsea structure recovery operations in the Griffin Field (21° 13'.4 S 114° 38'.7 E), Enfield Field (21° 28'.9 S 113° 59'.3 E) and the Stybarrow Field (21° 24'.3 S 113° 51'.7 E).

Mariners are advised to navigate with caution in the area.

**Chart temporarily affected - Aus 328 - Aus 329 - Aus 744**

**916(T)/2024 AUSTRALIA - WESTERN AUSTRALIA - Double Island - Platform unlit**

Santos

The *Twickenham* platform, *Mo(U)Y.15s* (20° 45'.35 S 115° 30'.28 E), is unlit.

A special light buoy, *Mo(U)Y.15s*, exists in position 20° 45'.41 S 115° 30'.33 E.

**Chart temporarily affected - Aus 65 - Aus 327 - Aus 328 - Aus 742**

**918(T)/2024 AUSTRALIA - WESTERN AUSTRALIA - North West Cape - Light unlit; light established**

*Former Notice* - 655(T)/2024 is cancelled

Australian Maritime Safety Authority Auscoast Warning 216/2024, Preliminary ATH 22/2024

The light, *Fl.10s 129m 21M* (21° 48'.37 S 114° 09'.61 E), is unlit.

A temporary light, *Fl.10s 95m 19M (Obscd 172.5° - 202.5° (030°))*, exists in position 21° 49'.22 S 114° 06'.06 E.

**Chart temporarily affected - Aus 328 - Aus 329 - Aus 744 - Aus 745 - Aus 4060 (INT 60) - Aus 4070 (INT 70) - Aus 4071 (INT 71) - Aus 4708 (INT 708) - Aus 4723 (INT 723)**

**982(T)/2024 AUSTRALIA - WESTERN AUSTRALIA - Cape Leschenault to Cape Bouvard - Fish aggregating devices westwards**

Department of Primary Industries and Regional Development WA

The special light buoy, *Fl.Y.5s FAD (Oct-Apr)* (31° 15'.13 S 115° 01'.54 E), has been temporarily relocated to position 31° 16'.57 S 115° 01'.63 E.

The special light buoy, *Fl.Y.5s FAD (Oct-Apr)* (32° 21'.56 S 115° 03'.76 E), has been temporarily relocated to position 32° 17'.56 S 115° 05'.64 E.

The special light buoy, *Fl.Y.5s FAD (Oct-Apr)* (32° 37'.64 S 115° 01'.73 E), has been temporarily relocated to position 32° 33'.25 S 115° 03'.40 E.

**Chart temporarily affected - Aus 754 - Aus 755**

**988(T)/2024 AUSTRALIA - WESTERN AUSTRALIA - Fremantle - Deepwater Channel - Scientific instrument**

*Former Notice* - 1023(T)/2023 is cancelled

Department of Transport WA

A special light buoy, *Fl(5)Y.20s*, exists in position 31° 58'.78 S 115° 41'.38 E.

**Chart temporarily affected - Aus 112**

**990(T)/2024 AUSTRALIA - WESTERN AUSTRALIA - Houtman Abrolhos - Zeewijk Channel - Fish aggregating device**

Department of Primary Industries and Regional Development WA

A special light buoy, *Fl.Y.5s FAD (Oct-Apr)*, exists in position 28° 52'.74 S 113° 42'.37 E.

**Chart temporarily affected - Aus 332**

**992(T)/2024 AUSTRALIA - WESTERN AUSTRALIA - Jurien Bay - Fish aggregating device westwards**

Department of Primary Industries and Regional Development WA

A special light buoy, *Fl.Y.5s FAD (Oct-Apr)*, exists in position 30° 18'.49 S 114° 35'.30 E.

**Chart temporarily affected - Aus 753**

**995(T)/2024 AUSTRALIA - WESTERN AUSTRALIA - Muiron Islands - Subsea operations northwestwards**

Woodside Energy Ltd

On or about 19 December 2024, vessel *MMA Pinnacle* will be conducting subsea structure recovery operations in the Stybarrow Field in the vicinity of position 21° 28'.48 S 113° 49'.54 E and 21° 29'.70 S 113° 49'.74 E.

Mariners are advised to navigate with caution in the area.

**Chart temporarily affected - Aus 328 - Aus 329**

**996(T)/2024 AUSTRALIA - WESTERN AUSTRALIA - Naturaliste Reefs - Fish aggregating devices westwards**  
Department of Primary Industries and Regional Development WA

The special light buoy, *Fl.Y.5s FAD (Nov-Apr)* (33° 08'.65 S 114° 56'.63 E), has been temporarily relocated to position 33° 15'.79 S 114° 34'.94 E.

The special light buoy, *Fl.Y.5s FAD (Nov-Apr)* (33° 13'.96 S 114° 51'.47 E), has been temporarily relocated to position 33° 18'.62 S 114° 39'.43 E.

**Chart temporarily affected - Aus 335**

**999(P)/2024 AUSTRALIA - WESTERN AUSTRALIA - Port Walcott - Shoaling**

*Former Notice - 789(P)/2024 is cancelled*  
Discovery Marine

Latest survey indicates shoaler depths than those charted may exist in an area bounded by the following positions:

20° 29'.89 S 117° 25'.65E

20° 29'.89 S 117° 27'.02E

20° 27'.96 S 117° 27'.02E

20° 27'.96 S 117° 25'.65E.

Mariners are advised to navigate with caution in the area.

Charts will be updated in due course.

**Chart which will be affected - Aus 55 - Aus 326**

**55(T)/2025 AUSTRALIA - WESTERN AUSTRALIA - Rottnest Island - Phillip Rock - Entry prohibited**

Department of Transport WA Notice 6302/2025

Entry is prohibited within a 200m radius of position 31° 59'.83 S 115° 33'.78 E.

Only government vessels and those associated with a coordinated response on site are permitted to enter the area.

Mariners are advised to navigate with caution in the area.

**Chart temporarily affected - Aus 112**

**103(T)/2025 AUSTRALIA - WESTERN AUSTRALIA - Barrow Island - Subsea operations westwards**

Santos

MV *Skandi Singapore* is conducting subsea operations in the vicinity of position 20° 36'.06 S 114° 55'.17 E.

A 500m radius exclusion zone exists around the vessel.

Mariners are advised to navigate with caution in the area.

**Chart temporarily affected - Aus 328**

**105(T)/2025 AUSTRALIA - WESTERN AUSTRALIA - Hilarys Boat Harbour - Scientific instrument westwards**

University of Western Australia

A special light buoy, *Fl.Y.2.5s*, exists in position 31° 50'.72 S 115° 38'.78 E.

**Chart temporarily affected - Aus 754**

**144(T)/2025 AUSTRALIA - WESTERN AUSTRALIA - Pelsaert Group - Gun Island - Fish aggregating devices off station westwards**

*Former Notice - 998(T)/2024 is cancelled*

Department of Primary Industries and Regional Development

The special light buoys, *Fl.Y.5s FAD (Dec-Apr)* (28° 59'.00 S 113° 46'.88 E and 28° 49'.66 S 113° 39'.92 E), are off station.

**Chart temporarily affected - Aus 332 - Aus 752**



**179(P)/2025 AUSTRALIA - WESTERN AUSTRALIA - Dampier - West Lewis Island - Obstruction**  
Go Offshore

An obstruction on the sea floor has been reported in the vicinity of position 20° 36'.27 S 116° 35'.13 E.

Mariners should navigate with caution in the area.

**Chart which will be affected - Aus 57**

**181(T)/2025 AUSTRALIA - WESTERN AUSTRALIA - Exmouth - Scientific instruments**

*Former Notice - 46(T)/2025 is cancelled*

Department of Transport WA Notice 6268/2024

Scientific instruments, 5m below the surface, exist in the following positions:

21° 55'.56 S 114° 08'.88 E

21° 57'.66 S 114° 08'.82 E

21° 58'.02 S 114° 08'.76 E

21° 59'.04 S 114° 08'.46 E.

Mariners are advised to navigate with caution in the area.

**Chart temporarily affected - Aus 744 - Aus 745**

**218(T)/2025 AUSTRALIA - WESTERN AUSTRALIA - Barracouta Shoal - Well plug and abandonment works eastwards**

Jadestone Energy

On or about 8 March 2025, a drill rig will be conducting well plug and abandonment works in the vicinity of position 12° 30'.08 S 124° 25'.12 E.

Mariners are advised to navigate with caution in the area.

**Chart temporarily affected - Aus 314 - Aus 319 - Aus 4722 (INT 722)**

**222(T)/2025 AUSTRALIA - WESTERN AUSTRALIA - Eugene McDermott Shoal to Exmouth Plateau - Cable laying operations**

Gulf Agency Company (Australia)

Vessel *Ile de Brehat* is conducting cable laying operations between positions 13° 26'.46 S 124° 34'.93 E and 12° 58'.13 S 124° 26'.68 E; and in the vicinity of position 19° 53'.09 S 113° 14'.03 E.

Mariners are advised to navigate with caution in the area.

**Chart temporarily affected - Aus 319 - Aus 4722 (INT 722) - Aus 4723 (INT 723)**

**224(T)/2025 AUSTRALIA - WESTERN AUSTRALIA - Geraldton - Fishing Boat Harbour - Bed levelling; survey operations**

Mid West Ports Notice 6/2025

The dredge *Reliance* and an unmanned surface vessel *Uni-Mini* are conducting bed levelling and survey operations in the entrance to Fishing Boat Harbour (28° 46'.27 S 114° 35'.58 E).

The dredge will be towing a plough bar extending 10m from the stern on the vessel.

Vessels will display appropriate lights and shapes and will monitor VHF Ch 11 and Ch 16.

Mariners are advised to navigate with caution in the area.

**Chart temporarily affected - Aus 81**

**225(T)/2025 AUSTRALIA - WESTERN AUSTRALIA - Glomar Shoal - Mooring buoys northwestwards**

Delmar Systems , Australian Maritime Safety Authority Auscoast Warning 82/2025

12 lit yellow mooring buoys, *Fl.3s*, exist within 1M radius of 19° 26'.11 S 116° 28'.49 E. 2·5M clearance requested.

**Chart temporarily affected - Aus 327**

**229(T)/2025 AUSTRALIA - WESTERN AUSTRALIA - Rottnest Island - Scientific instruments northwestwards**  
JASCO Applied Sciences (Australia)

Subsurface scientific instruments, 2m above seabed, exist in positions 31° 52'.91 S 114° 56'.07 E and 31° 52'.85 S 115° 01'.14 E.

Mariners are advised to keep a 100m radius clearance around the instruments and to navigate with caution in the area.

**Chart temporarily affected - Aus 754**

**263(T)/2025 AUSTRALIA - WESTERN AUSTRALIA - Esperance Bay to Eastern Group - Survey operations; scientific instruments**

*Former Notice - 221(T)/2025 is cancelled*  
Revelare Hydrospatial

During hydrographic survey operations, subsurface tide gauges with release buoys will be deployed in an area bounded by the following positions:

34° 13'.37 S 123° 59'.24 E  
34° 13'.12 S 124° 19'.17 E  
33° 34'.52 S 124° 19'.37 E  
33° 34'.82 S 124° 07'.20 E  
33° 44'.03 S 123° 58'.84 E  
33° 59'.75 S 123° 35'.86 E  
34° 07'.46 S 123° 38'.96 E.

An additional subsurface tide gauge with release buoy will be deployed in position 33° 57'.00 S 121° 49'.60 E.

A special light buoy, *Fl. Y. 1.5s*, will be deployed for 72 hours at various locations during the survey.

Mariners are advised to navigate with caution in the area.

**Chart temporarily affected - Aus 119 - Aus 762 - Aus 763 - Aus 4709 (INT 709)**

**264(T)/2025 AUSTRALIA - WESTERN AUSTRALIA - Hilarys Boat Harbour - Scientific instrument westwards**  
University of Western Australia

A special light buoy, *Fl. Y. 2.5s*, exists in position 31° 50'.72 S 115° 38'.78 E.

**Chart temporarily affected - Aus 754 - Aus 4060 (INT 60) - Aus 4070 (INT 70) - Aus 4708 (INT 708) - Aus 4709 (INT 709)**

**265(T)/2025 AUSTRALIA - WESTERN AUSTRALIA - King George Sound - Middleton Bay - Artificial reef**  
Department of Transport WA Notice 6371/2025

Works are in progress to establish an artificial reef in the vicinity of position 35° 01'.09 S 117° 55'.25 E.

Mariners are advised to navigate with caution in the area and keep well clear of the works.

**Chart temporarily affected - Aus 118**

**301(T)/2025 AUSTRALIA - WESTERN AUSTRALIA - Bandy Creek Boat Harbour - Dredging operations**  
Department of Transport WA Notice 6400/2025

The dredge *Cooper II* is conducting dredging operations in the boat harbour (33° 50'.17 S 121° 56'.00 E).

A 400m floating and submerged pipeline marked by special light buoys exists in the area.

The dredge will display appropriate lights and shapes and will monitor VHF Ch 16 and Ch 74. Mariners unsure of where to safely pass the dredge are requested to make contact.

Mariners are advised to navigate with caution in the area and keep well clear.

**Chart temporarily affected - Aus 119**

**304(P)/2025 AUSTRALIA - WESTERN AUSTRALIA - Carnarvon - Gascoyne River - Shoaling**  
Department of Transport WA

Latest survey shows channel realignment between the entrance (24° 54'.47 S 113° 38'.68 E) and Pelican Point (24° 53'.88 S 113° 38'.57 E).

Electronic Navigation Charts (ENCs) have been updated. Paper Charts will be updated in due course.

**Chart which will be affected - Aus 73**

**306(T)/2025 AUSTRALIA - WESTERN AUSTRALIA - Eugene McDermott Shoal to Scott Reef - Scientific instruments**  
JASCO Applied Sciences (Australia)

Subsurface scientific instruments exist as follows:

<i>Position</i>	<i>Remarks</i>
12° 57'.55 S 124° 40'.53 E	1.2m above seabed
12° 57'.77 S 124° 12'.71 E	1.2m above seabed
12° 58'.16 S 123° 42'.40 E	1.2m above seabed
13° 59'.09 S 121° 46'.42 E	1.5m above seabed
13° 59'.60 S 121° 58'.93 E	1.5m above seabed
14° 02'.07 S 122° 00'.98 E	1.5m above seabed
14° 02'.31 S 121° 58'.33 E	20m below the surface
14° 31'.15 S 121° 37'.64 E	1.5m above seabed.

Mariners are advised to navigate with caution in the area.

**Chart temporarily affected - Aus 319 - Aus 322**

**336(T)/2025 AUSTRALIA - WESTERN AUSTRALIA - Bunbury - Harbour works**  
*Former Notice - 219(P)/2025 is cancelled*  
Department of Transport WA Notice WA859/15/2025

Works associated with the construction of a new breakwater at the entrance to Casuarina Harbour are in progress between positions 33° 18'.67 S 115° 38'.63 E and 33° 18'.48 S 115° 38'.51 E.

Mariners should navigate between the lateral light buoys in the vicinity of position 33° 18'.67 S 115° 38'.61 E to follow the change in channel position.

Mariners are advised to navigate with caution in the area.

**Chart temporarily affected - Aus 115**

**337(T)/2025 AUSTRALIA - WESTERN AUSTRALIA - Geographe Bay - Eagle Bay - Light buoy off station**  
Department of Transport WA Notice 6398/2025

The special light buoy, *Fl.Y.3s* (33° 33'.01 S 115° 05'.17 E), is off station.

Mariners are advised to navigate with caution in the area.

**Chart temporarily affected - Aus 755**

**339(T)/2025 AUSTRALIA - WESTERN AUSTRALIA - Glomar Shoal - Drill rig**  
Woodside Energy Ltd

On or about 21 April 2025, drill rig *Transocean Endurance* will be conducting drilling operations in position 19° 26'.20 S 116° 28'.82 E.

**Chart temporarily affected - Aus 327**

**341(T)/2025 AUSTRALIA - WESTERN AUSTRALIA - Thevenard Island - Subsea operations**  
Chevron Australia

Diving and mooring removal activities are in progress in the following positions:

21° 38'.17 S 114° 55'.43 E  
21° 26'.42 S 115° 03'.24 E

21° 24'.00 S 115° 02'.55 E  
21° 24'.33 S 115° 02'.79 E  
21° 24'.35 S 115° 02'.82 E  
21° 24'.36 S 115° 02'.94 E  
21° 24'.15 S 115° 03'.07 E  
21° 24'.06 S 115° 03'.00 E  
21° 24'.05 S 115° 02'.97 E  
21° 24'.27 S 115° 02'.97 E  
21° 24'.00 S 115° 02'.86 E  
21° 24'.13 S 115° 02'.62 E.

Vessels will display appropriate lights and shapes and will monitor VHF Ch 14 and Ch 16.

Mariners are advised to navigate with caution in the area.

**Chart temporarily affected - Aus 64 - Aus 328 - Aus 743 - Aus 744**

**374(T)/2025 AUSTRALIA - WESTERN AUSTRALIA - Montebello Islands - Subsea operations northwestwards**  
Woodside Energy Ltd

On or about 11 May 2025, vessels *Deep Orient* and *Normand Saracen* will be conducting subsea installation activities and anchor pre-lay activities in an area bounded by the following positions:

20° 00'.15 S 115° 12'.74 E  
20° 02'.13 S 115° 13'.89 E  
20° 10'.34 S 115° 01'.72 E  
20° 06'.93 S 115° 00'.40 E  
20° 03'.46 S 115° 03'.60 E.

Mariners are advised to navigate with caution in the area.

**Chart temporarily affected - Aus 328 - Aus 742**

**415(T)/2025 AUSTRALIA - WESTERN AUSTRALIA - Cape Range - Tantabiddi - Light**  
Department of Transport WA Notice 6420/2025

The front lead (21° 53'.99 S 113° 59'.19 E) has collapsed and should not be relied upon to indicate recommended track.

**Chart temporarily affected - Aus 328 - Aus 329 - Aus 745**

**419(T)/2025 AUSTRALIA - WESTERN AUSTRALIA - Onslow - Beadon Creek - Pipe laying operations**  
Department of Transport WA Notice 6454/2025

Jack up barge and support vessel *Quokka* are conducting works associated with the installation of desalination pipelines between positions 21° 38'.12 S 115° 07'.61 E and 21° 38'.56 S 115° 07'.46 E .

Vessels will display appropriate lights and shapes and will monitor VHF Ch 16.

Mariners are advised to navigate with caution in the area.

**Chart temporarily affected - Aus 64**

**449(T)/2025 AUSTRALIA - WESTERN AUSTRALIA - Exmouth Plateau - Drilling operations**  
Woodside Energy Ltd

On or about 4 June 2025, drill rig *Valaris DPS-1* and support vessels will be conducting drilling operations in the following positions:

19° 45'.88 S 113° 14'.46 E  
19° 49'.46 S 113° 13'.14 E  
19° 52'.51 S 113° 06'.69 E  
19° 52'.65 S 113° 13'.41 E  
19° 53'.31 S 113° 10'.06 E  
19° 53'.45 S 113° 08'.73 E  
19° 53'.51 S 113° 08'.73 E  
19° 53'.81 S 113° 06'.92 E.

Mariners are advised to navigate with caution in the area.

**Chart temporarily affected - Aus 4723 (INT 723)**

**451(T)/2025 AUSTRALIA - WESTERN AUSTRALIA - Goeree Shoal - Subsea operations southeastwards**  
McDermott Australia

On or about 1 June 2025, vessel *DLV2000* will be conducting subsea operations in the vicinity of position 12° 57'.87 S 124° 26'.55 E.

Mariners are advised to navigate with caution in the area. 2.5M clearance requested.

**Chart temporarily affected - Aus 319**

**452(T)/2025 AUSTRALIA - WESTERN AUSTRALIA - King George Sound - Middleton Bay - Scientific instrument**  
Department of Transport WA Notice 6453/2025

A special light buoy, *Fl.Y.2.5s*, exists in position 35° 00'.97 S 117° 55'.73 E.

**Chart temporarily affected - Aus 118**

**453(T)/2025 AUSTRALIA - WESTERN AUSTRALIA - Montebello Islands - Drill rig northwards**  
MODU *Ocean Apex*

Drill rig *Ocean Apex* is conducting drilling operations in position 19° 47'.16 S 115° 19'.14 E.

**Chart temporarily affected - Aus 328**

**454(T)/2025 AUSTRALIA - WESTERN AUSTRALIA - Muiron Islands - Subsea operations northwestwards**  
Santos

On or about 2 June 2025, vessel *Fugro Etive* will be conducting subsea operations in an area bounded by the following positions:

21° 24'.84 S 114° 03'.59 E  
21° 24'.84 S 114° 05'.92 E  
21° 19'.73 S 114° 05'.92 E  
21° 19'.73 S 114° 03'.59 E.

Mariners are advised to navigate with caution in the area.

**Chart temporarily affected - Aus 328 - Aus 329**

**456(T)/2025 AUSTRALIA - WESTERN AUSTRALIA - Port Hedland - Light buoy removed**  
Pilbara Ports Authority Notice PH7/2025

The special light buoy, *Q.Y* (20° 00'.33 S 118° 26'.30 E), has been removed; a special buoy exists in situ.

Mariners are advised to refrain from entering the immediate area.

**Chart temporarily affected - Aus 53**

**459(P)/2025 AUSTRALIA - WESTERN AUSTRALIA - Varanus Island - Shoaling**  
Precision Hydrographic Services

Latest survey indicates shoaler depths than those charted may exist in an area bounded by the following positions:

20° 37'.35 S 115° 32'.83 E  
20° 37'.36 S 115° 33'.71 E  
20° 38'.00 S 115° 34'.60 E  
20° 39'.70 S 115° 36'.69 E  
20° 39'.87 S 115° 36'.16 E.

Mariners are advised to navigate with caution in the area.

Charts will be updated in due course.

**Chart which will be affected - Aus 65 - Aus 742**

**493(T)/2025 AUSTRALIA - WESTERN AUSTRALIA - Abbot Point - Survey operations; tide gauges northwards**  
Maritime Safety Queensland Notice 229(T)/2025

An unmanned survey vessel (USV) is conducting survey operations in an area bounded by the following positions:

19° 20'.43 S 147° 56'.38 E  
19° 36'.78 S 148° 31'.24 E  
19° 44'.96 S 148° 11'.89 E  
19° 42'.13 S 147° 59'.05 E  
19° 48'.14 S 148° 00'.12 E  
19° 38'.93 S 147° 50'.12 E  
19° 25'.85 S 147° 51'.32 E.

Tide gauges marked by special light buoys, *Fl. Y. 2s*, exist in the following positions:

19° 52'.9 S 148° 05'.1 E  
19° 44'.5 S 148° 18'.8 E  
19° 37'.1 S 148° 33'.7 E  
19° 32'.3 S 148° 20'.8 E  
19° 27'.7 S 148° 09'.5 E  
19° 19'.0 S 147° 56'.3 E  
19° 28'.9 S 147° 45'.5 E  
19° 39'.0 S 147° 47'.2 E  
19° 46'.4 S 147° 55'.8 E  
19° 34'.2 S 147° 59'.3 E  
19° 38'.8 S 148° 09'.7 E.

Mariners are advised to navigate with caution in the area.

**Chart temporarily affected - Aus 255 - Aus 825 - Aus 826 - Aus 827**

**494(T)/2025 AUSTRALIA - WESTERN AUSTRALIA - Cape Naturaliste - Geotechnical and geophysical operations westwards**

EGS Survey Pty Ltd

On or about 20 June 2025, vessel *PMG Emerald* will be conducting hydrographic and geophysical survey operations in an area bounded by the following positions:

31° 48'.40 S 110° 45'.82 E  
31° 48'.40 S 115° 49'.53 E  
34° 17'.98 S 110° 45'.82 E  
34° 17'.98 S 115° 49'.53 E.

Operations will include the use of a towed array to 1500 metres.

The vessel will display appropriate lights and shapes and will monitor VHF Ch 16.

Mariners are advised to navigate with caution in the area.

**Chart temporarily affected - Aus 112 - Aus 335 - Aus 336 - Aus 754 - Aus 755**

**495(T)/2025 AUSTRALIA - WESTERN AUSTRALIA - Exmouth Plateau - Subsea operations; survey operations**  
Subsea 7

Vessel *Seven Sisters* is conducting subsea operations and survey operations in an area bounded by the following positions:

19° 57'.84 S 113° 04'.05 E  
19° 57'.84 S 113° 16'.79 E  
19° 44'.31 S 113° 16'.79 E  
19° 44'.31 S 113° 04'.05 E.

Mariners are advised to navigate with caution in the area. 500m clearance requested.

**Chart temporarily affected - Aus 4723 (INT 723)**

**497(T)/2025 AUSTRALIA - WESTERN AUSTRALIA - NEW SOUTH WALES - Perth to Sydney - Cable laying operations**  
Gulf Agency Company (Australia)

Cable laying operations will be conducted between Perth and Sydney. The operations will begin in June and are estimated to be completed by September 2025.

Note: For e-notice users, please see full edition for map.

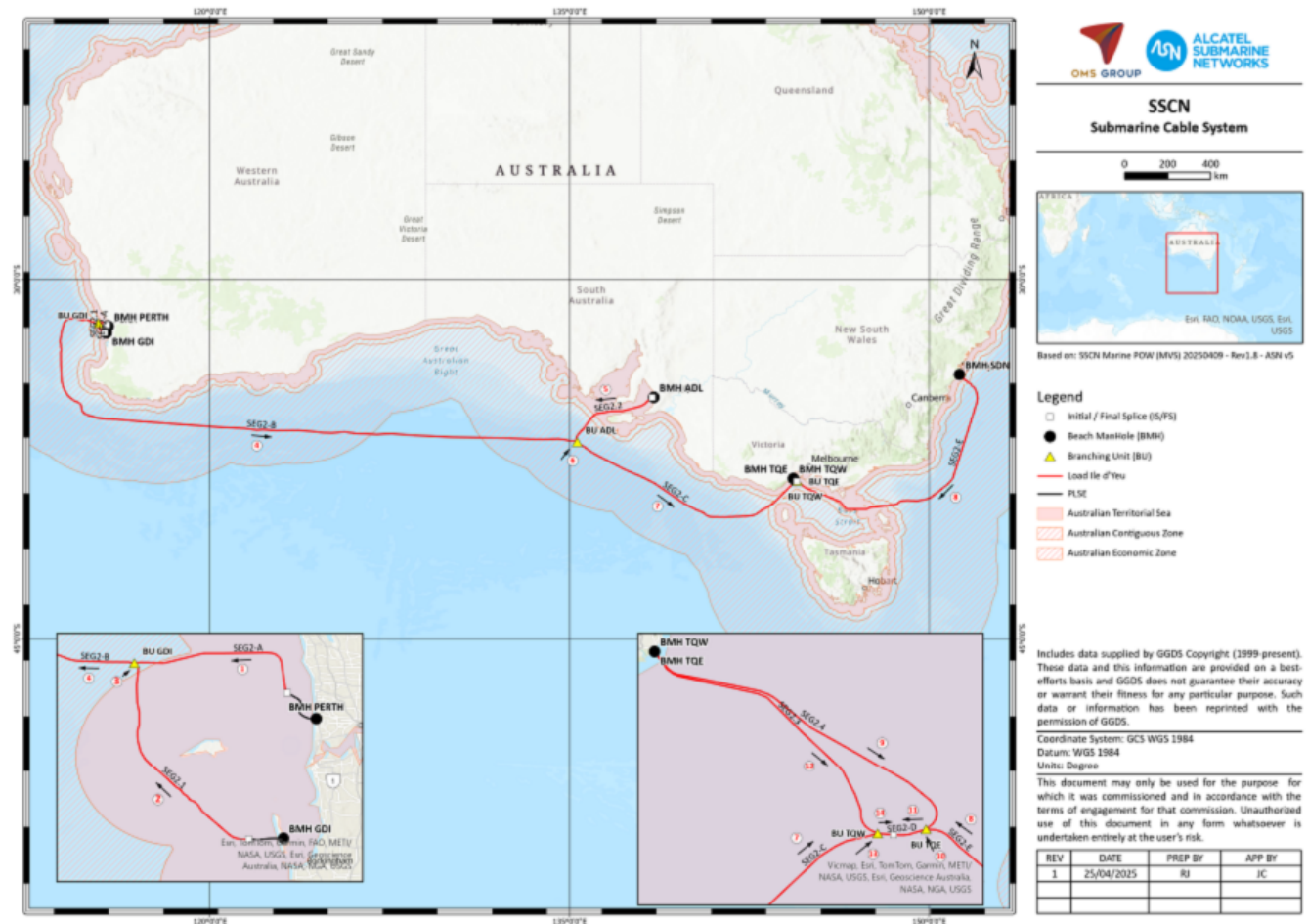


Chart temporarily affected - Aus 130 - Aus 143 - Aus 198 - Aus 335 - Aus 336 - Aus 343 - Aus 346 - Aus 348 - Aus 349 - Aus 357 - Aus 485 - Aus 487 - Aus 489 - Aus 754 - Aus 780 - Aus 781 - Aus 801 - Aus 802 - Aus 808 - Aus 4601 (INT 601) - Aus 4602 (INT 602) - Aus 4708 (INT 708) - Aus 4709 (INT 709) - Aus 4710 (INT 710)

**498(T)/2025 AUSTRALIA - WESTERN AUSTRALIA - North West Cape - Subsea operations northwards**  
Fugro

On or about 25 June 2025, subsea operations will be conducted in the vicinity of positions 21° 17'.70 S 114° 08'.00 E and 21° 26'.70 S 114° 01'.70 E.

Mariners are advised to navigate with caution in the area. 2.5NM clearance requested.

Chart temporarily affected - Aus 328 - Aus 329 - Aus 744

**556(T)/2025 AUSTRALIA - WESTERN AUSTRALIA - Broome - Roebuck Bay - Exclusion zone; mooring buoy**  
Former Notice - 414(T)/2025 is cancelled  
Kimberley Ports Authority Notice 11/2025

To facilitate the mooring of Kimberley Marine Supply Base pontoon, an exclusion zone has been established in an area bounded by the following positions:

18° 01'.52 S 122° 15'.67 E  
18° 01'.52 S 122° 16'.60 E  
18° 00'.65 S 122° 16'.60 E  
18° 00'.65 S 122° 15'.67 E.

A lit yellow mooring buoy, *Fl. Y. 3s*, exists in position 18° 00'.90 S 122° 16'.35 E.

Mariners are advised to navigate with caution in the area.

Chart temporarily affected - Aus 50

**558(T)/2025 AUSTRALIA - WESTERN AUSTRALIA - Cockburn Sound - Jervoise Bay - Northern Harbour - Wind turbine**

INF66

A floating vertical wind turbine is moored in position 32° 08'.79 S 115° 45'.87 E.

An 85m radius restricted area, marked by light buoys, exists around the wind turbine for all vessels except those that are authorised to enter.

Mariners are advised to navigate with caution in the area.

**Chart temporarily affected - Aus 117**

**560(P)/2025 AUSTRALIA - WESTERN AUSTRALIA - Hopetoun - Mason Bay - Shoaling**

Department of Transport WA

Latest survey indicates shoaler depths than those charted may exist in the vicinity of the following positions:

33° 57'.51 S 120° 29'.84 E

33° 57'.77 S 120° 06'.91 E

Mariners are advised to navigate with caution in the area.

Charts will be updated in due course.

**Chart which will be affected - Aus 116 - Aus 337**

**561(T)/2025 AUSTRALIA - WESTERN AUSTRALIA - Montebello Islands - Mooring buoys northwestwards**

Delmar Systems , Australian Maritime Safety Authority Auscoast Warning 186/2025

8 lit yellow mooring buoys, *Fl*.3s, exist within 1M radius of 20° 08'.98 S 115° 02'.38 E. 2.5M clearance requested.

**Chart temporarily affected - Aus 328**

**564(T)/2025 AUSTRALIA - WESTERN AUSTRALIA - Rottnest Island - Light buoy off station; AIS inoperative westwards**

Curtin University

The special light buoy, *Fl*.Y.5s, is off station and in position 31° 59'.58 S 115° 14'.82 E. The AIS is inoperative.

**Chart temporarily affected - Aus 754**



## **SOUTH AUSTRALIA**

### **81(T)/2021 AUSTRALIA - SOUTH AUSTRALIA - Gulf St Vincent - Rogues Point - Artificial reef**

Department of Planning, Transport and Infrastructure SA Notice 9/2017

An artificial reef is being developed in an area bounded by the following positions:

34° 30'.63 S 137° 53'.95 E

34° 30'.63 S 137° 54'.12 E

34° 30'.47 S 137° 54'.13 E

34° 30'.47 S 137° 53'.95 E.

A lit raft exists in position 34° 30'.59 S 137° 53'.99 E.

**Chart temporarily affected - Aus 781**

### **291(T)/2021 AUSTRALIA - SOUTH AUSTRALIA - Port Adelaide - Shoaling**

Department for Transport, Energy and Infrastructure SA Notice 38/2007

Silting has resulted in width restrictions being imposed in the main channel of the Port Adelaide River between No 40 beacon (34° 47'.86 S 138° 30'.79 E) and No 41 beacon (34° 48'.52 S 138° 30'.77 E).

Mariners should avoid the western side of the main channel and navigate with caution in this part of the River as the available navigable channel is now only 90 metres wide measured from the eastern edge.

Mariners intending to transit this section should contact the Manager Marine Operations, Flinders Ports Pty Ltd on (08) 8447 0622 to confirm maximum widths.

**Chart temporarily affected - Aus 130**

### **803(T)/2021 AUSTRALIA - SOUTH AUSTRALIA - Gulf St Vincent - Investigator Strait to Adelaide - Scientific instruments**

*Former Notice - 771(T)/2021 is cancelled*

Department for Infrastructure and Transport SA Notice 25(T)/2021

Special light buoys, *Fl. Y. 2s*, exist in the following positions:

34° 51'.30 S 138° 21'.00 E

35° 01'.50 S 138° 27'.00 E.

An unlit special buoy exists in position 35° 34'.20 S 136° 55'.53 E.

**Chart temporarily affected - Aus 130 - Aus 780 - Aus 781**

### **587(T)/2022 AUSTRALIA - SOUTH AUSTRALIA - Wallaroo - Point Hughes - Harbour works**

Department for Infrastructure and Transport SA Notice 18(T)/2022

Works associated with the construction of a new breakwater are in progress in the vicinity of position 33° 55'.88 S 137° 36'.29 E.

The works area is marked by special light buoys, *Fl. Y. 4s*.

Mariners are advised to navigate with caution in the area.

**Chart temporarily affected - Aus 777**

### **998(T)/2022 AUSTRALIA - SOUTH AUSTRALIA - Two Hummock Point to Point Riley - Scientific instruments**

Department for Infrastructure and Transport SA Notice 41(T)/2022

Scientific instruments exist on the seabed in the following positions:

32° 46'.43 S 137° 50'.38 E

33° 14'.56 S 137° 30'.23 E

33° 44'.84 S 137° 12'.20 E

33° 53'.17 S 137° 29'.01 E.

Mariners are advised to navigate with caution in the area

**Chart temporarily affected - Aus 777 - Aus 778**

**724(T)/2023 AUSTRALIA - SOUTH AUSTRALIA - Port Lincoln - Boston Bay - Light beacon destroyed**

Department for Infrastructure and Transport SA Notice 44(T)/2023

The starboard lateral light beacon, *Fl.G.2s No3* (34° 41'.75 S 135° 52'.70 E), has been destroyed.

Mariners are advised to navigate with caution in the area.

**Chart temporarily affected - Aus 134**

**1027(T)/2023 AUSTRALIA - SOUTH AUSTRALIA - Port Bonython - Scientific instrument**

Department for Infrastructure and Transport SA Notice 68(T)/2023

A subsurface scientific instrument, 1.5m above the seabed, exists in position 33° 00'.24 S 137° 47'.34 E.

**Chart temporarily affected - Aus 136**

**168(T)/2024 AUSTRALIA - SOUTH AUSTRALIA - Kangaroo Island - American River - Wreck**

Department for Infrastructure and Transport SA Notice 7(T)/2024

A stranded wreck marked by an isolated danger light buoy, *Fl(2)4s*, exists in position 35° 47'.22 S 137° 46'.51 E.

Mariners are advised to navigate with caution in the area.

**Chart temporarily affected - Aus 780**

**337(T)/2024 AUSTRALIA - SOUTH AUSTRALIA - Denial Bay - Obstruction**

Department for Infrastructure and Transport SA Notice 23(T)/2024

A lost anchor exists in position 32° 14'.87 S 133° 30'.18 E.

Mariners are advised to navigate with caution in the area.

**Chart temporarily affected - Aus 120 - Aus 341**

**459(T)/2024 AUSTRALIA - SOUTH AUSTRALIA - Yorke Peninsula - Sultana Point - Wreck**

Department for Infrastructure and Transport SA Notice 27(T)/2024

A stranded wreck marked by an isolated danger light buoy, *Fl(2)5s*, exists in position 35° 05'.95 S 137° 45'.00 E.

Mariners are advised to navigate with caution in the area.

**Chart temporarily affected - Aus 780 - Aus 781**

**573(T)/2024 AUSTRALIA - SOUTH AUSTRALIA - Cape Hardy - Scientific instruments**

Department for Infrastructure and Transport SA Notice 37(T)/2024

Subsurface scientific instruments, 3m above the seabed, exist in the following positions:

34° 10'.03 S 136° 20'.90 E

34° 11'.05 S 136° 20'.47 E

34° 12'.01 S 136° 19'.80 E.

Mariners are advised to navigate with caution in the area.

**Chart temporarily affected - Aus 777**

**574(T)/2024 AUSTRALIA - SOUTH AUSTRALIA - Spencer Gulf - Point Lowly - Scientific instruments**

*Former Notice - 36(T)/2024 is cancelled*

Department for Infrastructure and Transport SA Notice 33(T)/2024

Subsurface scientific instruments, 1.5m above the seabed, exist in positions 33° 00'.46 S 137° 47'.55 E and 32° 58'.76 S 137° 48'.02 E.

Mariners are advised to navigate with caution in the area.

**Chart temporarily affected - Aus 136**

**622(T)/2024 AUSTRALIA - SOUTH AUSTRALIA - Port Adelaide - Light beacon destroyed**

Department for Infrastructure and Transport SA Notice 40(T)/2024

The light beacon, *Q.10M Entrance* (34° 46'.82 S 138° 22'.53 E), has been destroyed; a special virtual AIS exists in situ.

Mariners are advised to navigate with caution in the area.

**Chart temporarily affected - Aus 130 - Aus 485 - Aus 781**

**757(T)/2024 AUSTRALIA - SOUTH AUSTRALIA - Gulf St Vincent - Port Gawler - Scientific instrument**

Department for Infrastructure and Transport SA Notice 55(T)/2024

A subsurface scientific instrument exists in position 34° 42'.67 S 138° 22'.58 E.

Mariners are advised to navigate with caution in the area.

**Chart temporarily affected - Aus 130 - Aus 485 - Aus 781**

**758(T)/2024 AUSTRALIA - SOUTH AUSTRALIA - Gulf St Vincent - Largs Bay to Glenelg - Scientific instruments**

Department for Infrastructure and Transport SA Notice 52(T)/2024

Light buoys, *Fl.Y.2-5s*, exist in the following positions:

34° 47'.98 S 138° 28'.78 E

34° 51'.30 S 138° 21'.02 E

34° 57'.28 S 138° 29'.30 E.

Mariners are advised to navigate with caution in the area.

**Chart temporarily affected - Aus 130 - Aus 485 - Aus 781**

**830(T)/2024 AUSTRALIA - SOUTH AUSTRALIA - Port Bonython - Light buoy unlit**

Department for Infrastructure and Transport SA Notice 64(T)/2024

The port lateral light buoy, *Fl.R.2s No8* (33° 01'.29 S 137° 46'.28 E), is unlit.

**Chart temporarily affected - Aus 136 - Aus 778**

**921(T)/2024 AUSTRALIA - SOUTH AUSTRALIA - Port Adelaide - Scientific instruments**

Department for Infrastructure and Transport SA Notice 72(T)/2024

A subsurface scientific instrument, 0.5m above the seabed, exists in position 34° 44'.16 S 138° 20'.37 E.

Special light buoys, *Fl.Y.2s*, exist in positions 34° 40'.68 S 138° 25'.06 E and 34° 42'.56 S 138° 26'.80 E.

Mariners are advised to navigate with caution in the area.

**Chart temporarily affected - Aus 130 - Aus 485 - Aus 781**

**1000(T)/2024 AUSTRALIA - SOUTH AUSTRALIA - Cape Hardy - Geotechnical operations**

Department for Infrastructure and Transport SA Notice 54(T)/2024

Geotechnical operations are in progress in the vicinity of position 34° 10'.97 S 136° 19'.83 E.

Mariners are advised to navigate with caution in the area.

**Chart temporarily affected - Aus 777**

**59(T)/2025 AUSTRALIA - SOUTH AUSTRALIA - Gulf St Vincent - Port Gawler - Scientific instrument**

*Former Notice - 305(T)/2024* is cancelled

Department for Infrastructure and Transport SA Notice 82(T)/2024

A subsurface scientific instrument exists on the seabed, with a minimum safe clearance of 2m, in position 34° 41'.89 S 138° 24'.83 E.

Mariners are advised to navigate with caution in the area.

**Chart temporarily affected - Aus 781**

**60(T)/2025 AUSTRALIA - SOUTH AUSTRALIA - Point Riley to Shoalwater Point - Survey operations**

Fugro

On or about 20 January 2025, vessel *Empress Prowler*, with a towed array, will be conducting survey operations in areas bounded by the following positions:

33° 52'.31 S 137° 36'.51 E  
33° 51'.01 S 137° 35'.40 E  
33° 50'.83 S 137° 35'.08 E  
33° 51'.63 S 137° 34'.25 E  
33° 51'.89 S 137° 34'.76 E;  
and  
33° 39'.50 S 137° 12'.92 E  
33° 41'.39 S 137° 15'.12 E  
33° 42'.03 S 137° 16'.28 E  
33° 41'.26 S 137° 17'.30 E  
33° 40'.44 S 137° 15'.75 E.

The vessel will display appropriate lights and shapes and will monitor VHF Ch 12 and Ch 16.

Mariners are advised to navigate with caution in the area. 500m clearance requested.

**Chart temporarily affected - Aus 777 - Aus 778**

**61(T)/2025 AUSTRALIA - SOUTH AUSTRALIA - Point Riley to Shoalwater Point - Survey operations**

Fugro

Vessel *Ocean Dynasty*, with a towed array, is conducting survey operations in an area bounded by the following positions:

33° 51'.77 S 137° 34'.42 E  
33° 50'.95 S 137° 35'.25 E  
33° 41'.08 S 137° 17'.08 E  
33° 41'.99 S 137° 16'.21 E.

The vessel will display appropriate lights and shapes and will monitor VHF Ch 12 and Ch 16.

Mariners are advised to navigate with caution in the area. 500m clearance requested.

**Chart temporarily affected - Aus 485 - Aus 777 - Aus 778 - Aus 4060 (INT 60) - Aus 4709 (INT 709)**

**147(T)/2025 AUSTRALIA - SOUTH AUSTRALIA - Cape Buffon - Light unlit**

*Former Notice* - 1026(T)/2023 is cancelled

Department for Infrastructure and Transport SA Notice 12(T)/2025

The light, *Fl.WR.2·5s 8/3M* (37° 33'.96 S 140° 06'.47 E), is unlit; a temporary light, *Fl.R.2·5s 2M*, exists in situ.

**Chart temporarily affected - Aus 348**

**148(T)/2025 AUSTRALIA - SOUTH AUSTRALIA - Kangaroo Island - Survey operations; tide gauges, light buoys southwards**

*Former Notice* - 107(T)/2025 is cancelled

Guardian Geomatics , UKHO

In relation to hydrographic survey operations, tide gauges marked by special light buoys, *Fl.Y.5s*, exist in the following positions:

35° 54'.1 S 137° 52'.6 E  
36° 06'.2 S 137° 52'.7 E  
36° 12'.1 S 137° 36'.5 E  
36° 15'.4 S 137° 22'.5 E  
36° 25'.3 S 137° 20'.9 E  
36° 22'.1 S 137° 36'.5 E

36° 07'.2 S 137° 24'.2 E  
35° 56'.4 S 137° 39'.0 E  
36° 16'.5 S 137° 53'.3 E

Mariners are advised to navigate with caution in the area.

**Chart temporarily affected - Aus 346 - Aus 485**

**150(T)/2025 AUSTRALIA - SOUTH AUSTRALIA - Yarraville Shoals - Geotechnical and geophysical operations westwards**

*Former Notice* - 1001(T)/2024 is cancelled

Department for Infrastructure and Transport SA Notice 13(T)/2025, 14(T)/2025

A vessel is conducting geotechnical and geophysical operations in an area bounded by the following positions:

33° 15'.06 S 137° 25'.52 E  
33° 15'.69 S 137° 28'.98 E  
33° 13'.12 S 137° 29'.98 E  
33° 12'.85 S 137° 26'.43 E.

Mariners are advised to navigate with caution in the area.

**Chart temporarily affected - Aus 778**

**342(T)/2025 AUSTRALIA - SOUTH AUSTRALIA - Nuyts Archipelago - Satellite re-entry southwards**

*Former Notice* - 149(T)/2025 is cancelled

Southern Launch

Satellite re-entry will occur during the period 10 May to 31 May 2025.

Satellite debris may impact the waters within an area bounded by the following positions:

35° 36'.0 S 132° 54'.0 E  
35° 36'.0 S 134° 54'.0 E  
34° 09'.0 S 134° 54'.0 E  
32° 00'.0 S 133° 57'.0 E  
32° 00'.0 S 132° 54'.0 E.

Mariners are advised to navigate with caution in the area.

**Chart temporarily affected - Aus 120 - Aus 341 - Aus 342 - Aus 343 - Aus 4709 (INT 709)**

**501(T)/2025 AUSTRALIA - SOUTH AUSTRALIA - Gulf St Vincent - Carrickalinga - Topmark missing**

Department for Infrastructure and Transport SA Notice 35(T)/2025

The topmark on isolated danger light beacon, *Fl(2) 6s 2M* (35° 25'.23 S 138° 18'.33 E), is missing.

Mariners are advised to navigate with caution in the area.

**Chart temporarily affected - Aus 485 - Aus 780**

**502(T)/2025 AUSTRALIA - SOUTH AUSTRALIA - Island Point - Light beacons damaged and unlit**

Department for Infrastructure and Transport SA Notice 36(T)/2025

The west cardinal light beacon, *Q(9) 15s* (34° 25'.99 S 137° 24'.80 E), is unlit and the topmark is missing.

The light beacon, *Fl.R. 3s* (34° 26'.80 S 137° 23'.87 E), is unlit and the topmark is missing.

Mariners are advised to navigate with caution in the area.

**Chart temporarily affected - Aus 776 - Aus 777**

**565(T)/2025 AUSTRALIA - SOUTH AUSTRALIA - Port Vincent - Middle Spit - Light beacon destroyed**

Department for Infrastructure and Transport SA Notice 42(T)/2025

The light beacon, *Fl. 2s 6m 8M* (34° 45'.34 S 137° 54'.17 E), has been destroyed.

Mariners are advised to navigate with caution in the area.

Chart temporarily affected - Aus 485 - Aus 781

## VICTORIA

### 350(T)/2021 AUSTRALIA - VICTORIA - Port Phillip - Corio Bay - Scientific instruments

Victorian Regional Channels Authority Notice 93(T)/2021

Scientific instruments exist on the seabed in the following positions:

38° 05'.17 S 144° 23'.31 E

38° 05'.35 S 144° 24'.20 E.

**Chart temporarily affected - Aus 153 - Aus 157**

### 409(T)/2021 AUSTRALIA - VICTORIA - Port Phillip - Corio Bay - Scientific instrument

Victorian Regional Channels Authority Notice 310(T)/2019

A scientific instrument marked by a special light buoy, *Fl. Y*, exists on the seabed in position 38° 05'.07 S 144° 23'.25 E.

**Chart temporarily affected - Aus 157**

### 618(T)/2021 AUSTRALIA - VICTORIA - Port Phillip - Half Moon Bay - Obstructions

Parks Victoria Notices 215(T), 218(T)/2021

The jetty (37° 58'.09 S 145° 00'.58 E) has been demolished. Shoaling and obstructions may exist in the area north of the jetty.

Mariners are advised to navigate with caution in the area.

**Chart temporarily affected - Aus 155**

### 664(T)/2021 AUSTRALIA - VICTORIA - Western Port - Stony Point to Sandy Point - Shoaling

Victorian Regional Channels Authority Notice 199/2019

Shoaling exists in the vicinity of the following positions:

<i>Position</i>	<i>Least depth</i>	<i>Remarks</i>
38°25'.5 S 145° 13'.8 E	13.6m	Extending up to 100m into shipping channel
38°22'.8 S 145° 14'.7 E	13.2m	Extending up to 50m into shipping channel
38°21'.9 S 145° 14'.4 E	13.5m	Extending up to 40m into shipping channel
38°22'.1 S 145° 14'.3 E	13.8m	Extending up to 10m into shipping channel

Mariners are advised to navigate with caution in the area.

**Chart temporarily affected - Aus 151**

### 665(T)/2021 AUSTRALIA - VICTORIA - Western Port - Hanns Inlet - Light beacons unlit

HMAS Cerberus

The light beacons, *Fl.G.8s* (38° 23'.26 S 145° 13'.95 E) and *Fl.R.8s* (38° 23'.30 S 145° 13'.94 E) are unlit.

**Chart temporarily affected - Aus 151**

### 859(T)/2021 AUSTRALIA - VICTORIA - Western Port - Crib Point - Exclusion zone

Maritime Safety Victoria Notice 265(T)/2021

The Ex-HMAS OTAMA (Oberon class submarine) located 800 metres north of Crib Point jetty has been relocated to position 38° 20'.66 S 145° 13'.27 E, with a 200 metre exclusion zone.

A 200 metre exclusion zone remains at its previous location (38° 20'.48 S 145° 13'.45 E).

Mariners are advised to navigate with caution in the area.

**Chart temporarily affected - Aus 151**

### 1033(T)/2021 AUSTRALIA - VICTORIA - Port Phillip - Beaumaris Bay - Buoy

Parks Victoria Notice 353(T)/2021

A special buoy exists in position 37° 59'.50 S 145° 03'.56 E.

**Chart temporarily affected - Aus 155**

**294(T)/2022 AUSTRALIA - VICTORIA - Port Phillip - Point Wilson - Exclusion zone**

*Former Notice - 1078(T)/2021 is cancelled*

Victorian Regional Channels Authority Notice 239/2020, Parks Victoria Notice 104/2022

A 300m exclusion zone exists outwards from the centreline of Point Wilson Pier (38° 05'.54 S 144° 31'.48 E). It is marked by special light buoys, *Iso.2s*, in the following positions:

38° 05'.51 S 144° 30'.73 E  
38° 05'.68 S 144° 31'.32 E  
38° 05'.84 S 144° 31'.86 E  
38° 05'.89 S 144° 32'.45 E  
38° 05'.64 S 144° 32'.48 E  
38° 05'.55 S 144° 32'.04 E  
38° 05'.38 S 144° 31'.47 E  
38° 05'.20 S 144° 30'.93 E.

Only vessels involved in the remediation works are permitted to enter the area.

Mariners are advised to navigate with caution in the area.

**Chart temporarily affected - Aus 143 - Aus 157**

**630(T)/2022 AUSTRALIA - VICTORIA - Cape Duquesne - Scientific instruments**

Maritime Safety Victoria Notice 165(T)/2019

Scientific instruments exist as follows:

<i>Position</i>	<i>Remarks</i>
38° 24'.52 S 141° 16'.26 E	25m below surface
38° 24'.24 S 141° 17'.48 E	84m below surface
38° 24'.10 S 141° 18'.04 E	76m below surface
38° 23'.97 S 141° 18'.60 E	69m below surface
38° 23'.83 S 141° 19'.16 E	70m below surface
38° 23'.69 S 141° 19'.73 E	67m below surface
38° 23'.56 S 141° 20'.25 E	67m below surface
38° 23'.44 S 141° 20'.73 E	61m below surface
38° 23'.34 S 141° 21'.18 E	50m below surface
38° 23'.24 S 141° 21'.57 E	30m below surface
38° 23'.15 S 141° 21'.91 E	18m below surface.

**Chart temporarily affected - Aus 140 - Aus 348 - Aus 349**

**747(T)/2022 AUSTRALIA - VICTORIA - Ninety Mile Beach - Traffic separation scheme southwestwards**

Australian Maritime Safety Authority

Decommissioning of oil and gas infrastructure will take place at Blackback Prod Well (38° 32'.42 S 148° 33'.24 E), Gudgeon Well (38° 30'.82 S 148° 28'.17 E) and Terakihi Well (38° 30'.27 S 148° 32'.89 E).

New temporary shipping fairways and a separation zone have been established to keep transiting ships away from decommissioning activities. The new shipping fairways and separation zone are bound by the following positions:

Northeast bound lane	38° 36'.941 S	148° 45'.842 E
	38° 39'.507 S	148° 48'.047 E
	38° 44'.600 S	148° 23'.000 E
	38° 42'.034 S	148° 20'.795 E.
Southwest bound lane	38° 33'.407 S	148° 42'.545 E
	38° 35'.750 S	148° 44'.746 E
	38° 40'.844 S	148° 19'.699 E
	38° 38'.500 S	148° 17'.500 E.
Separation zone	38° 35'.750 S	148° 44'.746 E
	38° 36'.941 S	148° 45'.842 E
	38° 42'.034 S	148° 20'.795 E
	38° 40'.844 S	148° 19'.699 E.

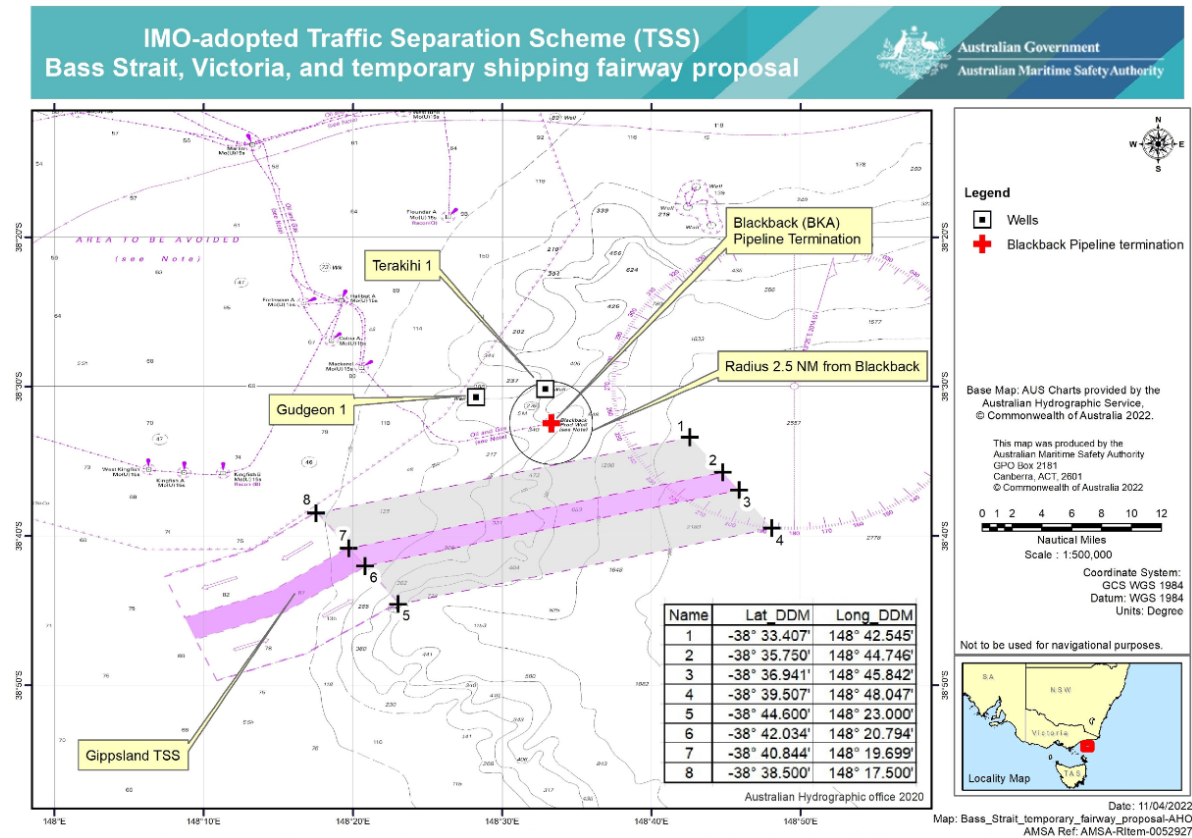


The fairways and separation zone come into effect on 1 August 2022 at 0000 UTC and will remain in place until further notice.

Mariners should follow the appropriate traffic lane and navigate in the general direction of traffic flow for that lane. They should, as far as practicable, keep clear of the separation zone.

Due to an increased risk of collision, particularly with vessels that may be restricted in their ability to manoeuvre, mariners should keep a good look out and take early action to avoid collisions.

**Note:** For e-notice users, please see full edition for map.



**Chart temporarily affected - Aus 357 - Aus 487**

#### 754(T)/2022 AUSTRALIA - BASS STRAIT - Racon non operational

Australian Maritime Safety Authority Auscoast Warning 171/2021

The racon at the *Flounder A* platform (38° 18'.65 S 148° 26'.36 E) is non operational.

**Chart temporarily affected - Aus 357 - Aus 487**

#### 804(T)/2022 AUSTRALIA - VICTORIA - Western Port - Warneet - Jetty closed

Parks Victoria Notice 327/2022

The jetty (38° 13'.66 S 145° 18'.35 E) has been deemed unsafe for public use and has been closed.

Temporary berthing is available at the floating pontoon.

**Chart temporarily affected - Aus 151**

#### 112(T)/2023 AUSTRALIA - VICTORIA - Ninety Mile Beach - Virtual AIS southeastwards

Australian Maritime Safety Authority

Special virtual AIS have been established in the Gippsland region to denote an area of oil and gas decommissioning work in the following positions:

38° 23'.54 S 148° 36'.38 E

38° 24'.59 S 148° 30'.93 E

38° 25'.75 S 148° 25'.49 E

38° 29'.10 S 148° 36'.38 E  
38° 31'.31 S 148° 25'.49 E  
38° 34'.65 S 148° 36'.38 E  
38° 35'.76 S 148° 30'.93 E  
38° 36'.87 S 148° 25'.49 E.

Transiting ships are requested to keep clear of the area marked by the special virtual AIS.

ANTM 747(T)/2022 refers.

#### **Chart temporarily affected - Aus 357 - Aus 487**

##### **465(T)/2023 AUSTRALIA - VICTORIA - Port Phillip Bay - Wreck**

Ports Victoria Notice 218(T)/2023

A wreck, least depth *11<sub>4</sub>m*, exists in position 37° 55'.93 S 144° 56'.86 E.

#### **Chart temporarily affected - Aus 143 - Aus 155**

##### **948(T)/2023 AUSTRALIA - VICTORIA - Port Phillip - Mornington - Light beacon removed**

*Former Notice* - 871(T)/2023 is cancelled

Parks Victoria Notice 427(T)/2021, 376/2023, 424(T)/2023

The west cardinal light beacon, *VQ(9)10s* (38° 13'.42 S 145° 01'.58 E), has been removed; a west cardinal light buoy, *VQ(9)10s*, exists in situ.

This buoy replaces the destroyed west cardinal light beacon. Due to local conditions, this buoy is frequently off station.

#### **Chart temporarily affected - Aus 143**

##### **1033(T)/2023 AUSTRALIA - VICTORIA - Port Phillip - Point Cole - Light buoy off station westwards**

Parks Victoria Notice 452(T)/2023

The special light buoy, *Fl(4)Y.10s RMYSF* (37° 53'.59 S 144° 56'.30 E), is off station.

#### **Chart temporarily affected - Aus 155**

##### **80(T)/2024 AUSTRALIA - VICTORIA - Port Phillip - Sandringham - Light buoy off station**

Parks Victoria Notice 20(T)/2024

The special light buoy, *Fl(4)Y.10s SYC1* (37° 57'.81 S 144° 58'.88 E), is off station.

Mariners are advised to navigate with caution in the area.

#### **Chart temporarily affected - Aus 155**

##### **197(T)/2024 AUSTRALIA - VICTORIA - Port Phillip - Chelsea - Beacon destroyed**

*Former Notice* - 1032(T)/2021 is cancelled

Parks Victoria Notice 333(T)/2021, 79/2024

The special beacon (38° 03'.47 S 145° 06'.74 E) has been destroyed; a special conical buoy exists in situ.

#### **Chart temporarily affected - Aus 143**

##### **340(T)/2024 AUSTRALIA - VICTORIA - Port Phillip - Sorrento - Harbour works**

Parks Victoria Notice 155(T)/2024

Construction works are in progress at Sorrento Ferry Terminal (38° 20'.16 S 144° 44'.75 E).

An exclusion zone exists in an area bounded by the coast and the following:

<i>Position</i>	<i>Remarks</i>
38° 20'.20 S 144° 44'.72 E	marked by buoy
38° 20'.21 S 144° 44'.74 E	marked by buoy
38° 20'.21 S 144° 44'.76 E	marked by buoy

38° 20'.22 S 144° 44'.80 E marked by buoy  
38° 20'.23 S 144° 44'.83 E marked by buoy  
38° 20'.16 S 144° 44'.78 E.

Only vessels involved in the works, Searoad Ferries and Parks Victoria officers are permitted to enter the area.

All hazards to navigation will display appropriate lights and shapes.

Mariners are advised to navigate with caution in the area.

**Chart temporarily affected - Aus 143**

**376(T)/2024 AUSTRALIA - VICTORIA - Ninety Mile Beach - Platform unlit eastwards**

Australian Maritime Safety Authority Auscoast Warning 24/2024

The *Kingfish B* platform, *Mo(U)15s* (38° 35'.82 S 148° 11'.28 E), is unlit.

**Chart temporarily affected - Aus 357 - Aus 487 - Aus 4601 (INT 601)**

**504(T)/2024 AUSTRALIA - VICTORIA - Port Phillip - Point Wilson Bank - Light buoy off station**

Ports Victoria Notice 248(T)/2024

The special light buoy, *Fl.Y.6s* (38° 06'.10 S 144° 31'.24 E), is off station.

Mariners are advised to navigate with caution in the area.

**Chart temporarily affected - Aus 157**

**625(T)/2024 AUSTRALIA - VICTORIA - Western Port - North Arm - Scientific instrument**

Ports Victoria Notice 302(T)/2024

A subsurface scientific instrument, 1m above the seabed, exists in position 38° 19'.79 S 145° 13'.93 E.

Mariners are advised to navigate with caution in the area.

**Chart temporarily affected - Aus 151**

**659(T)/2024 AUSTRALIA - VICTORIA - Corner Inlet - Scientific instruments eastwards**

Former Notice - 169(T)/2024 is cancelled

RPS Group

Subsurface scientific instruments, 20m below the surface, exist in the following positions:

38° 45'.19 S 147° 05'.63 E  
38° 50'.96 S 147° 17'.54 E  
38° 55'.81 S 146° 50'.01 E  
39° 03'.61 S 147° 39'.05 E  
39° 21'.71 S 146° 58'.05 E.

**Chart temporarily affected - Aus 357 - Aus 487 - Aus 802**

**763(T)/2024 AUSTRALIA - VICTORIA - Port Phillip - Sandringham - Light beacon unlit**

Parks Victoria Notice 121(T)/2019, 285(T)/2019, 368(T)/2024

The starboard lateral light beacon, *Fl(2)G.5s 5m 4M* (37° 56'.48 S 144° 59'.56 E), is unlit; a starboard lateral buoy exists in position 37° 56'.51 S 144° 59'.53 E.

**Chart temporarily affected - Aus 143 - Aus 155**

**933(P)/2024 AUSTRALIA - VICTORIA - Port Phillip - Popes Eye Bank - Shoaling southwards**

Port of Melbourne Operations

Latest survey indicates shoaler depths than those charted exist in the vicinity of position 38° 17'.0 S 144° 42'.2 E.

Mariners are advised to navigate with caution in the area.

Electronic Navigation Charts (ENCs) have been updated. Paper Charts will be updated in due course.

**Chart which will be affected - Aus 143 - Aus 144**

**934(T)/2024 AUSTRALIA - VICTORIA - Port Phillip - Exclusion zone**

Ports Victoria Notice 483(T)/2024

Due to debris on the sea floor, a 20m exclusion zone exists around No9 light beacon (37° 53'.19 S 144° 55'.75 E) extending to the north, east and south.

Mariners are advised to navigate with caution in the area.

**Chart temporarily affected - Aus 155**

**1005(T)/2024 AUSTRALIA - VICTORIA - Port Phillip - Capel Sound - Moorings**

Parks Victoria Notice 511(T)/2024

Temporary moorings exist in the vicinity of position 38° 20'.48 S 144° 50'.78 E.

Mariners are advised to navigate with caution in the area.

**Chart temporarily affected - Aus 143**

**62(T)/2025 AUSTRALIA - VICTORIA - Ninety Mile Beach - Geotechnical operations**

*Former Notice - 927(T)/2024 is cancelled*

Safe Transport Victoria Notice 2(T)/2025

MV *Samson Explorer* is conducting subsea geotechnical and diving operations in an area bounded by the coast and the following positions:

38° 14'.45 S 147° 21'.94 E

38° 15'.83 S 147° 23'.67 E

38° 15'.72 S 147° 25'.25 E

38° 14'.44 S 147° 25'.10 E

38° 14'.08 S 147° 22'.40 E.

Mariners are advised to navigate with caution in the area. 500m clearance requested.

**Chart temporarily affected - Aus 357 - Aus 487**

**63(T)/2025 AUSTRALIA - VICTORIA - Ninety Mile Beach - Survey operations**

*Former Notice - 926(T)/2024 is cancelled*

Safe Transport Victoria Notice 6(T)/2025

MV *Offshore Surveyor*, with a 200m towed array, is conducting a geophysical survey in an area bounded the following positions:

38° 31'.17 S 147° 24'.22 E

38° 23'.89 S 147° 14'.83 E

38° 27'.56 S 147° 10'.21 E

38° 34'.96 S 147° 19'.75 E

38° 41'.91 S 147° 11'.52 E

38° 51'.34 S 147° 24'.51 E

38° 37'.26 S 147° 41'.11 E

38° 27'.86 S 147° 28'.13 E.

The vessel will monitor VHF Ch 16.

Mariners are advised to navigate with caution in the area. 500m clearance requested.

**Chart temporarily affected - Aus 357 - Aus 487 - Aus 802**

**67(T)/2025 AUSTRALIA - VICTORIA - Portland Bay to Childers Cove - Scientific instruments southwards**

RPS Group

Subsurface scientific instruments, 15m above seabed, exist in the following positions:

38° 30'.85 S 141° 49'.17 E

38° 33'.86 S 142° 18'.53 E

38° 40'.79 S 142° 02'.60 E  
38° 50'.39 S 142° 35'.64 E.

Mariners are advised to navigate with caution in the area.

**Chart temporarily affected - Aus 140 - Aus 349**

**109(T)/2025 AUSTRALIA - VICTORIA - Ninety Mile Beach - Survey operations**

*Former Notice* - 929(T)/2024 is cancelled

Safe Transport Victoria NTM 040(T)/2025

An unmanned surface vehicle (USV) will be conducting survey operations in areas bounded by the coast and the following positions:

38° 27'.32 S 147° 05'.64 E

38° 33'.63 S 147° 03'.27 E

38° 27'.29 S 147° 11'.17 E

38° 25'.19 S 147° 08'.40 E;

and

38° 23'.21 S 147° 10'.89 E

38° 25'.34 S 147° 13'.52 E

38° 19'.48 S 147° 21'.06 E

38° 22'.02 S 147° 12'.48 E.

Mariners are advised to navigate with caution in the area.

**Chart temporarily affected - Aus 357 - Aus 487 - Aus 4060 (INT 60) - Aus 4601 (INT 601)**

**152(T)/2025 AUSTRALIA - VICTORIA - Ninety Mile Beach - Platform unlit eastwards**

Australian Maritime Safety Authority Auscoast Warning 33/2025

The *Mackerel* platform, *Mo(U)15s* (38° 28'.73 S 148° 20'.56 E), is unlit.

**Chart temporarily affected - Aus 357 - Aus 487 - Aus 4060 (INT 60) - Aus 4601 (INT 601)**

**154(T)/2025 AUSTRALIA - VICTORIA - Port Campbell - Scientific instrument southwards**

RPS Group

A special light buoy, *Q(5)Y.20s*, exists in position 38° 40'.85 S 142° 59'.51 E.

**Chart temporarily affected - Aus 349**

**158(T)/2025 AUSTRALIA - BASS STRAIT - Hogan Group - Scientific instrument northeastwards**

Orsted

A special light buoy, *Fl(5)Y.20s*, exists in position 39° 06'.23 S 147° 29'.70 E.

**Chart temporarily affected - Aus 357 - Aus 487**

**159(T)/2025 AUSTRALIA - BASS STRAIT - Hogan Group - Light float eastwards**

Orsted

A yellow light float, *Fl(5)Y.20s*, exists in position 39° 16'.84 S 147° 32'.15 E.

**Chart temporarily affected - Aus 357 - Aus 487**

**160(T)/2025 AUSTRALIA - BASS STRAIT - Kent Group - Scientific instruments northwards**

Bhagwan Marine

Subsurface scientific instruments, 1.5m above the seabed, exist in the following positions:

39° 04'.63 S 147° 59'.49 E

39° 07'.26 S 147° 16'.15 E

39° 16'.38 S 147° 31'.76 E

39° 21'.68 S 147° 04'.50 E.

Mariners are advised to navigate with caution in the area.

**Chart temporarily affected - Aus 357 - Aus 487 - Aus 802**

**193(T)/2025 AUSTRALIA - VICTORIA - Ninety Mile Beach - Scientific instruments southwards**  
RPS Group

Special light buoys, Q(5)Y.20s, exist in positions 38° 33'.75 S 147° 12'.49 E and 38° 38'.63 S 147° 14'.62 E.

**Chart temporarily affected - Aus 357 - Aus 487**

**196(P)/2025 AUSTRALIA - VICTORIA - Port Phillip - Wreck**  
Ports Victoria

Latest survey indicates a wreck, with least depth 21.5m, exists in position 38° 08'.09 S 144° 56'.58 E.

Charts will be updated in due course.

**Chart which will be affected - Aus 143**

**231(T)/2025 AUSTRALIA - VICTORIA - Cape Otway - Artificial reef southwards**  
Polaris Marine

Vessels *Constructor 3* and *Leaders Creek* are conducting works to establish an artificial reef in the vicinity of position 38° 58'.08 S 143° 31'.77 E.

Mariners are advised to navigate with caution in the area and keep well clear of the works.

**Chart temporarily affected - Aus 349 - Aus 487**

**232(T)/2025 AUSTRALIA - VICTORIA - Ninety Mile Beach - Survey operations southwards**  
Fugro

On or about 10 March 2025, vessel *Fugro Mariner* will be conducting geotechnical survey operations in an area bounded by the following positions:

38° 38'.94 S 147° 14'.90 E

38° 31'.16 S 147° 17'.03 E

38° 28'.41 S 147° 13'.89 E

38° 34'.85 S 147° 05'.98 E.

Mariners are advised to navigate with caution in the area.

**Chart temporarily affected - Aus 357 - Aus 487**

**235(T)/2025 AUSTRALIA - VICTORIA - Portland - Shoaling**  
Port of Portland Notice 62(T)/2025

Shoaling extends approximately 90 metres to the west of the breakwater (38° 20'.65 S 141° 37'.37 E), with a least depth of 6.7m at the channel toe line. Shoaling decreases as it extends west to a depth of 10m.

Mariners are advised to navigate with caution in the area.

**Chart temporarily affected - Aus 140**

**268(P)/2025 AUSTRALIA - VICTORIA - Kate Kearney Channel to McLoughlins Entrance - Shoaling**  
*Former Notice - 895(P)/2020 is cancelled*  
Gippsland Ports

Latest survey shows shoaling and channel realignment in the following channels:

Kate Kearney Channel (38° 41'.7 S 146° 43'.0 E)

Kate Kearney Entrance (38° 41'.5 S 146° 45'.1 E)

Tarra Channel (38° 40'.8 S 146° 45'.7 E)

Boat Harbour Channel (38° 40'.4 S 146° 48'.4 E)

Pelican Channel (38° 39'.3 S 146° 48'.7 E)

Manns Beach Channel (38° 38'.8 S 146° 47'.4 E)

Manns Channel (38° 40'.5 S 146° 49'.6 E)

Oyster Bed Channel (38° 38'.5 S 146° 51'.2 E)  
McLoughlins Entrance (38° 37'.8 S 146° 53'.0 E).

Mariners are advised to navigate with caution in the area.

Charts will be updated in due course.

**Chart which will be affected - Aus 181**

**271(T)/2025 AUSTRALIA - VICTORIA - Port Fairy - Scientific instrument southwards**  
Deakin University

A special light buoy, *Fl.Y.2.5s*, exists in positions 38° 38'.55 S 142° 18'.69 E.

**Chart temporarily affected - Aus 349**

**310(T)/2025 AUSTRALIA - VICTORIA - Port Philip - Sampling works**  
Ports Victoria Notice 173(T)/2025

The vessel *Lobo* is conducting sampling works, which involves the towing of nets 5m in length, in an area bounded by the following positions:

37° 59'.66 S 144° 50'.48 E  
38° 06'.22 S 144° 49'.21 E  
38° 04'.98 S 144° 31'.04 E  
38° 03'.22 S 144° 31'.36 E  
38° 01'.99 S 144° 34'.02 E  
38° 00'.73 S 144° 35'.14 E  
38° 00'.83 S 144° 37'.40 E.

The vessel can be contacted on 0423 771 047 / 0415 892 572 or on VHF Ch 12.

Mariners are advised to navigate with caution in the area. Minimum passing distance of 100m requested.

**Chart temporarily affected - Aus 143 - Aus 155 - Aus 157**

**313(T)/2025 AUSTRALIA - VICTORIA - Portland - Light unlit**  
Parks Victoria Notice 158(T)/2025

The light (38° 20'.70 S 141° 37'.18 E), *F.G.*, is unlit.

The light (38° 20'.70 S 141° 37'.18 E), *Oc.G.2.5s 19m*, is operating at reduced intensity.

Mariners are advised to navigate with caution in the area.

**Chart temporarily affected - Aus 140**

**345(T)/2025 AUSTRALIA - VICTORIA - Port Campbell - Safety zones southwards**  
NOPSEMA

On 1 May 2025, a 500m radius safety zone will exist centred on positions 39° 06'.70 S 142° 55'.73 E and 39° 14'.37 S 142° 54'.82 E.

**Chart temporarily affected - Aus 349**

**348(T)/2025 AUSTRALIA - VICTORIA - Port Phillip - Beaumaris Bay - Obstruction**  
Parks Victoria

An above water obstruction exists in position 37° 59'.38 S 145° 02'.83 E.

Mariners are advised to navigate with caution in the area.

**Chart temporarily affected - Aus 155**

**375(T)/2025 AUSTRALIA - VICTORIA - Ninety Mile Beach - Safety zone eastwards**  
NOPSEMA

A 500m radius safety zone exists centred on position 38° 11'.81 S 148° 33'.79 E.

**Chart temporarily affected - Aus 357**

**379(T)/2025 AUSTRALIA - VICTORIA - Port Phillip - South Channel - Light beacon destroyed**

Ports Victoria Notice 205(T)/2025

The north cardinal light beacon, *Q.9m 9M* (38° 17'.70 S 144° 41'.15 E), has been destroyed; a north cardinal virtual AIS and a north cardinal light buoy, exist in situ.

**Chart temporarily affected - Aus 143 - Aus 144 - Aus 4709 (INT 709)**

**420(T)/2025 AUSTRALIA - VICTORIA - Ninety Mile Beach - Platform unlit eastwards**

Australian Maritime Safety Authority Auscoast Warning 142/2025

The *Dolphin* platform, *Mo(U)15s* (38° 29'.24 S 147° 22'.65 E), is unlit.

**Chart temporarily affected - Aus 357 - Aus 487 - Aus 4601 (INT 601)**

**422(T)/2025 AUSTRALIA - VICTORIA - Port Campbell - Well plug and abandonment works southwards**

Woodside Energy Ltd

Drill rig *Transocean Equinox* and support vessels are conducting well plug and abandonment works of the Minerva wells in the vicinity of position 38° 42'.58 S 142° 57'.61 E.

Mariners are advised to navigate with caution in the area.

**Chart temporarily affected - Aus 349**

**461(T)/2025 AUSTRALIA - VICTORIA - Ninety Mile Beach - Wreck southwards**

Safe Transport Victoria Notice 279(T)/2025, Gippsland Ports Notice 6/2025, Australian Maritime Safety Authority Auscoast Warning 170/2025

A wreck marked by a virtual AIS, *TB4*, exists in position 38° 34'.91 S 147° 05'.97 E.

Marines are advised to navigate with caution in the area.

**Chart temporarily affected - Aus 357 - Aus 487**

**469(T)/2025 AUSTRALIA - VICTORIA - Port Phillip - Mud Islands - Beacons destroyed**

Ports Victoria Notice 247(T)/2025, 248(T)/2025

The beacons in position 38° 16'.96 S 144° 46'.01 E and 38° 16'.41 S 144° 45'.19 E have been destroyed.

Mariners are advised to navigate with caution in the area.

**Chart temporarily affected - Aus 143**

**470(T)/2025 AUSTRALIA - VICTORIA - Port Phillip - Observatory Point to Point Franklin - Light buoys off station**

Parks Victoria Notice 258(T)/2025, 267(T)/2025

The special light buoys, *Fl.Y.5s* (38° 18'.34 S 144° 41'.23 E and 38° 18'.71 S 144° 42'.87 E), are off station.

Mariners are advised to navigate with caution in the area.

**Chart temporarily affected - Aus 143 - Aus 144**

**503(T)/2025 AUSTRALIA - VICTORIA - Ninety Mile Beach - Drill rig eastwards**

MODU *Valaris 107*

Drill rig *Valaris 107* is conducting drilling operations in position 38° 11'.80 S 148° 33'.80 E.

**Chart temporarily affected - Aus 357**



**505(T)/2025 AUSTRALIA - VICTORIA - Ninety Mile Beach - Scientific instrument southwards**  
RPS Group

A special light buoy, Q(5)Y.20s, exists in position 38° 38'.58 S 147° 22'.98 E.

**Chart temporarily affected - Aus 357 - Aus 487**

**507(T)/2025 AUSTRALIA - VICTORIA - Port Campbell - Subsea operations southwards**  
Delmar Systems

On or about 15 June 2025, pre-lay mooring operations will be conducted in the vicinity of position 39° 06'.68 S 142° 55'.72 E.

Mariners are advised to navigate with caution in the area.

**Chart temporarily affected - Aus 349**

**508(T)/2025 AUSTRALIA - VICTORIA - Port Campbell - Mooring buoys southwards**  
Australian Maritime Safety Authority Auscoast Warning 178/2025, Delmar Systems

12 lit yellow mooring buoys, Fl.3s, exist within 1M radius of 39° 06'.8 S 142° 55'.7 E. 2.5M clearance requested.

**Chart temporarily affected - Aus 349**

**566(T)/2025 AUSTRALIA - VICTORIA - Ninety Mile Beach - Safety zone eastwards**  
NOPSEMA

On 1 July 2025, a 500m radius safety zone will exist centred on position 38° 23'.87 S 148° 18'.95 E.

**Chart temporarily affected - Aus 357**

**567(T)/2025 AUSTRALIA - VICTORIA - Port Campbell - Safety zone southwestwards**  
NOPSEMA

On 1 July 2025, a 0.27M radius safety zone will exist centred on the following positions:

39° 00'.86 S 142° 36'.48 E

39° 01'.56 S 142° 34'.73 E

39° 05'.74 S 142° 48'.72 E.

**Chart temporarily affected - Aus 349**

**573(T)/2025 AUSTRALIA - VICTORIA - Port Phillip - South Channel - Light beacon destroyed**  
Parks Victoria Notice 335(T)/2025

The starboard lateral light beacon, Fl.G.3s 9m No1 (38° 17'.96 S 144° 42'.43 E), has been destroyed.

A replacement light beacon, Fl.G.3s, exists in position 38° 17'.97 S 144° 42'.42 E.

Mariners are advised to navigate with caution in the area.

**Chart temporarily affected - Aus 143 - Aus 144**

**574(T)/2025 AUSTRALIA - VICTORIA - Port Phillip - Scientific instruments**  
Parks Victoria Notice 333(T)/2025

Special light buoys, Fl.Y.2.5s, exist in the following positions:

37° 58'.72 S 144° 59'.73 E

38° 08'.16 S 144° 45'.18 E

38° 09'.73 S 145° 03'.26 E

38° 18'.09 S 144° 52'.36 E

38° 18'.50 S 144° 41'.52 E

38° 18'.95 S 144° 42'.74 E

38° 19'.22 S 144° 43'.91 E.

Mariners are advised to navigate with caution in the area.

**Chart temporarily affected - Aus 143 - Aus 144 - Aus 155 - Aus 157**

**575(T)/2025 AUSTRALIA - VICTORIA - Port Phillip - Clifton Springs - Light beacon unlit**  
Parks Victoria Notice 334(T)/2025

The north cardinal light beacon, Q (38° 08'.59 S 144° 33'.80 E), is unlit.

Mariners are advised to navigate with caution in the area.

**Chart temporarily affected - Aus 157**

**576(T)/2025 AUSTRALIA - VICTORIA - Port Phillip - Prince George Bank - Light beacon destroyed**  
*Former Notice - 514(T)/2025 is cancelled*  
Parks Victoria Notice 329(T)/2025

The east cardinal light beacon, Q(3)10s (38° 07'.64 S 144° 43'.00 E), has been destroyed.

Mariners are advised to navigate with caution in the area.

**Chart temporarily affected - Aus 157**

**577(T)/2025 AUSTRALIA - VICTORIA - Port Phillip - Weeroona Bay - Light buoy off station**  
Parks Victoria Notice 330(T)/2025

The special light buoy, Fl. Y. 5s (38° 18'.67 S 144° 42'.55 E), is off station.

Mariners are advised to navigate with caution in the area.

**Chart temporarily affected - Aus 144**

**579(T)/2025 AUSTRALIA - VICTORIA - Warrnambool - Scientific instrument southwards unlit**  
*Former Notice - 517(T)/2025 is cancelled*  
BMT

The special light buoy, Fl. Y. 4s (38° 29'.27 S 142° 27'.43 E), is unlit.

Mariners are advised to navigate with caution in the area.

**Chart temporarily affected - Aus 349**

**580(T)/2025 AUSTRALIA - VICTORIA - Western Port - North Arm - Scientific instruments**  
*Former Notice - 518(T)/2025 is cancelled*  
Parks Victoria Notice 309(T)/2025

Special light buoys, Fl. Y. 3s, exist in the following positions:

38° 15'.95 S 145° 16'.56 E

38° 16'.62 S 145° 14'.28 E

38° 21'.34 S 145° 13'.28 E

**Chart temporarily affected - Aus 151**

**581(T)/2025 AUSTRALIA - VICTORIA - Western Port - Gentle Annie Channel - Buoy off station**  
Parks Victoria Notice 317/2025

The port lateral buoy, No6 (38° 14'.27 S 145° 20'.84 E), is off station.

Mariners are advised to navigate with caution in the area.

**Chart temporarily affected - Aus 151**

## TASMANIA

### 627(T)/2016 AUSTRALIA - TASMANIA - Pipe Clay Head to Pitt Water - Scientific instruments

Former Notice - 309(T)/2014 is cancelled

University of Tasmania

Subsurface scientific instruments exist in the following positions:

42° 48'.25 S 147° 29'.91 E  
42° 48'.29 S 147° 31'.42 E  
42° 48'.43 S 147° 30'.02 E  
42° 49'.18 S 147° 34'.71 E  
42° 50'.70 S 147° 33'.57 E  
42° 50'.74 S 147° 35'.11 E  
42° 50'.90 S 147° 36'.91 E  
42° 51'.05 S 147° 32'.08 E  
42° 51'.33 S 147° 35'.89 E  
42° 51'.69 S 147° 34'.85 E  
42° 51'.82 S 147° 30'.92 E  
42° 51'.82 S 147° 33'.36 E  
42° 52'.35 S 147° 32'.10 E  
42° 52'.70 S 147° 36'.29 E  
42° 52'.94 S 147° 34'.16 E  
42° 53'.24 S 147° 31'.16 E  
42° 53'.79 S 147° 32'.67 E  
42° 53'.88 S 147° 37'.33 E  
42° 54'.20 S 147° 35'.44 E  
42° 54'.37 S 147° 30'.53 E  
42° 54'.47 S 147° 40'.80 E  
42° 54'.67 S 147° 33'.87 E  
42° 54'.92 S 147° 40'.78 E  
42° 55'.13 S 147° 31'.80 E  
42° 55'.36 S 147° 40'.76 E  
42° 55'.81 S 147° 40'.74 E  
42° 56'.99 S 147° 39'.68 E  
42° 57'.04 S 147° 38'.01 E  
42° 57'.15 S 147° 39'.22 E  
42° 57'.15 S 147° 37'.41 E  
42° 57'.28 S 147° 36'.79 E  
42° 57'.40 S 147° 36'.20 E  
42° 57'.51 S 147° 35'.59 E  
42° 57'.62 S 147° 34'.99 E  
42° 57'.73 S 147° 34'.44 E  
42° 57'.86 S 147° 33'.85 E  
42° 57'.96 S 147° 33'.30 E.

**Chart temporarily affected - Aus 171 - Aus 796**

### 263(T)/2018 AUSTRALIA - TASMANIA - Devonport - Shoaling

HydroSurvey Australia

Shoaling exists in the Mersey River between positions 41° 11'.20 S 146° 21'.98 E and 41° 11'.48 S 146° 22'.10 E.

Mariners are advised to navigate with caution in the area.

**Chart temporarily affected - Aus 164**

### 522(T)/2020 AUSTRALIA - TASMANIA - D'Entrecasteaux Channel - Tower Bay - Harbour works; light buoys

Marine and Safety Tasmania Notice M98/2020

Mooring works are in progress, marked by special light buoys as follows:

Position	Remarks
43° 23'.38 S 147° 02'.34 E	Fl.Y.4s
43° 23'.46 S 147° 02'.27 E	Fl.Y.4s
43° 23'.36 S 147° 01'.98 E	
43° 23'.28 S 147° 02'.05 E	

**Chart temporarily affected - Aus 173**

**673(T)/2021 AUSTRALIA - TASMANIA - Maria Island - Scientific instruments**  
Marine and Safety Tasmania

Subsurface scientific instruments exist on the seabed in the following positions:

42° 40'.08 S 147° 58'.04 E  
42° 39'.99 S 147° 58'.60 E  
42° 39'.91 S 147° 59'.16 E  
42° 39'.82 S 147° 59'.72 E  
42° 39'.74 S 148° 00'.28 E  
42° 39'.08 S 148° 10'.40 E  
42° 39'.28 S 148° 10'.92 E  
42° 39'.48 S 148° 11'.44 E  
42° 39'.68 S 148° 11'.96 E  
42° 39'.88 S 148° 12'.49 E  
42° 40'.08 S 148° 13'.01 E  
42° 40'.28 S 148° 13'.53 E  
42° 40'.48 S 148° 14'.05 E  
42° 40'.68 S 148° 14'.57 E  
42° 40'.88 S 148° 15'.10 E  
42° 41'.08 S 148° 15'.62 E  
42° 41'.28 S 148° 16'.14 E  
42° 41'.48 S 148° 16'.66 E  
42° 41'.68 S 148° 17'.18 E  
42° 41'.88 S 148° 17'.71 E  
42° 42'.08 S 148° 18'.23 E  
42° 42'.28 S 148° 18'.75 E  
42° 42'.48 S 148° 19'.27 E  
42° 42'.68 S 148° 19'.79 E  
42° 42'.87 S 148° 20'.32 E  
42° 43'.07 S 148° 20'.84 E  
42° 43'.26 S 148° 21'.26 E.

**Chart temporarily affected - Aus 766 - Aus 797**

**677(T)/2021 AUSTRALIA - TASMANIA - North West Bay - Mooring area**  
Marine and Safety Tasmania Notice M106/2021

A mooring area, marked by special light buoys, exists in an area bounded by the following positions:

43° 02'.75 S 147° 17'.91 E  
43° 02'.66 S 147° 18'.04 E  
43° 02'.74 S 147° 18'.15 E  
43° 02'.82 S 147° 18'.00 E.

Mariners are advised to navigate with caution in the area.

**Chart temporarily affected - Aus 171**

**722(T)/2021 AUSTRALIA - TASMANIA - Port Dalrymple - Bell Bay - Harbour works**  
Marine and Safety Tasmania Notice M207/2021

Remediation works are in progress at Bell Bay Berth 6 (41° 08'.39 S 146° 51'.14 E).

Mariners are advised to navigate with caution in the area.

**Chart temporarily affected - Aus 167**

**916(T)/2022 AUSTRALIA - TASMANIA - Devonport - Virtual AIS**  
Marine and Safety Tasmania Notice M373(T)/2022

A reduced width of the channel is marked by virtual AIS as follows:

<i>Position</i>	<i>Remarks</i>
41° 10'.43 S 146° 21'.85 E	starboard lateral AIS
41° 10'.45 S 146° 21'.93 E	port lateral AIS
41° 10'.45 S 146° 21'.84 E	starboard lateral AIS
41° 10'.50 S 146° 21'.82 E	starboard lateral AIS
41° 10'.51 S 146° 21'.91 E	port lateral AIS
41° 10'.57 S 146° 21'.89 E	port lateral AIS.

**Chart temporarily affected - Aus 164**

**83(T)/2023 AUSTRALIA - TASMANIA - Devonport - Harbour works**

Marine and Safety Tasmania Notice M10(T)/2023

Demolition works are in progress in the vicinity of berth 3E in an area bounded by the coast and the following positions:

41° 11'.30 S 146° 22'.14 E  
41° 11'.32 S 146° 22'.09 E  
41° 11'.15 S 146° 21'.97 E  
41° 11'.11 S 146° 21'.97 E  
41° 11'.07 S 146° 21'.99 E  
41° 10'.94 S 146° 21'.98 E  
41° 10'.94 S 146° 22'.00 E.

Vessels will display appropriate lights and shapes and will monitor VHF Ch 14.

Mariners are advised not to enter the works area unless they are required to utilise the swing basin. These vessels must obtain approval from Devonport VTS prior to arrival and departure.

**Chart temporarily affected - Aus 164**

**167(T)/2023 AUSTRALIA - TASMANIA - King Island - Grassy Harbour - Platform, submarine cable, prohibited area**

Marine and Safety Tasmania Notice M19/2021

A lit platform, *F*, exists in position 40° 03'.97 S 144° 03'.53 E.

A submarine power cable exists between positions 40° 03'.97 S 144° 03'.53 E and 40° 03'.91 S 144° 03'.53 E.

An entry prohibited area, with radius 125m, exists centred on position 40° 03'.97 S 144° 03'.53 E.

Mariners are advised to navigate with caution in the area.

**Chart temporarily affected - Aus 179**

**375(T)/2023 AUSTRALIA - TASMANIA - Devonport - Mersey River - Berth**

Marine and Safety Tasmania Notice M175/2023

Three piles exist in the vicinity of position 41° 11'.44 S 146° 22'.01 E for the temporary berth, Devonport Berth 6 West.

**Chart temporarily affected - Aus 164**

**639(T)/2023 AUSTRALIA - TASMANIA - River Derwent - Flowerpot Point - Kelp longlines; light buoys**

*Former Notice - 513(T)/2023 is cancelled*

Marine and Safety Tasmania Notice M214(T)/2023, M266(T)/2023

Subsurface kelp longlines exist in an area, marked by light buoys, bounded by the following positions:

43° 01'.24 S 147° 20'.24 E  
43° 01'.24 S 147° 20'.31 E  
43° 01'.04 S 147° 20'.31 E  
43° 01'.04 S 147° 20'.24 E.

Vessels not directly involved in the research activities are prohibited from entering the area.

Mariners are advised to navigate with caution in the area.

**Chart temporarily affected - Aus 171 - Aus 173**

**839(T)/2023 AUSTRALIA - TASMANIA - Ringarooma Bay - Scientific instrument**

Marine and Safety Tasmania Notice M327(T)/2023

A scientific instrument marked by an orange buoy exists in position 40° 49'.55 S 147° 54'.70 E.

**Chart temporarily affected - Aus 798**

**876(T)/2023 AUSTRALIA - TASMANIA - Macquarie Harbour - Scientific instruments**

Marine and Safety Tasmania Notice M338(T)/2023

Scientific instruments, 10m below the surface, exist in positions 42° 18'.49 S 145° 23'.01 E and 42° 20'.80 S 145° 25'.22 E.

**Chart temporarily affected - Aus 177 - Aus 792**

**85(T)/2024 AUSTRALIA - TASMANIA - Macquarie Harbour - Lit barge**

Marine and Safety Tasmania Notice M10/2024

The barge *Wombat* which is marked by a light, *F*, exists in position 42° 17'.55 S 145° 22'.18 E.

Mariners are advised to navigate with caution in the area.

**Chart temporarily affected - Aus 177**

**133(T)/2024 AUSTRALIA - TASMANIA - Macquarie Harbour - Scientific instrument**

Marine and Safety Tasmania Notice M36/2024

A scientific instrument, 10m below the surface, exists in position 42° 22'.79 S 145° 28'.84 E.

**Chart temporarily affected - Aus 177 - Aus 792**

**134(T)/2024 AUSTRALIA - TASMANIA - Macquarie Harbour - Scientific instruments**

Marine and Safety Tasmania Notice M37/2024

Scientific instruments marked by special buoys exist in the following positions:

42° 16'.92 S 145° 17'.62 E

42° 17'.06 S 145° 19'.03 E

42° 17'.16 S 145° 16'.00 E

42° 19'.38 S 145° 19'.27 E

42° 21'.72 S 145° 32'.22 E

42° 22'.08 S 145° 24'.46 E

42° 24'.24 S 145° 27'.62 E

42° 26'.04 S 145° 26'.91 E.

**Chart temporarily affected - Aus 177 - Aus 792**

**343(T)/2024 AUSTRALIA - TASMANIA - Franklin Sound - Lady Barron - Wreck**

Marine and Safety Tasmania Notice M159(T)/2024

A wreck marked by an isolated danger light buoy, Q(2)5s, exists in position 40° 12'.85 S 148° 14'.74 E.

**Chart temporarily affected - Aus 179**

**344(T)/2024 AUSTRALIA - TASMANIA - Macquarie Harbour - Scientific instrument**

Marine and Safety Tasmania Notice M155(T)/2024

A scientific instrument, 10m below the surface, exists in position 42° 18'.56 S 145° 23'.32 E.

**Chart temporarily affected - Aus 177 - Aus 792**

**426(T)/2024 AUSTRALIA - TASMANIA - Huon River - Brooks Bay - Wreck**

*Former Notice - 385(T)/2024 is cancelled*

Marine and Safety Tasmania Notice M189(T)/2024

A stranded wreck exists in position 43° 13'.74 S 147° 01'.53 E.

Mariners are advised to navigate with caution in the area.

**Chart temporarily affected - Aus 173**

**767(T)/2024 AUSTRALIA - TASMANIA - Furneaux Group - Flinders Island - Survey operations**

Ocean Infinity Pty Ltd

On or about 1 October 2024, vessels *Seven Oceans* and *Nostromo* will be conducting survey operations in an area bounded by the following positions:

40° 15'.38 S 147° 22'.19 E  
40° 05'.86 S 147° 43'.03 E  
40° 00'.02 S 147° 51'.14 E  
39° 51'.96 S 147° 48'.33 E  
39° 44'.45 S 147° 53'.94 E  
39° 36'.91 S 147° 44'.19 E  
39° 55'.91 S 147° 23'.60 E.

Subsurface scientific instruments exist on the seabed in the following positions:

39° 44'.8 S 147° 52'.7 E  
39° 54'.0 S 147° 45'.9 E  
40° 04'.0 S 147° 44'.3 E  
40° 10'.2 S 147° 34'.4 E  
40° 15'.9 S 147° 21'.9 E  
40° 06'.3 S 147° 22'.2 E  
39° 55'.7 S 147° 23'.0 E  
39° 45'.8 S 147° 34'.7 E  
39° 36'.4 S 147° 44'.2 E  
40° 00'.4 S 147° 35'.1 E.

Special light buoys may exist in the vicinity of the above positions.

Mariners are advised to navigate with caution in the area.

**Chart temporarily affected - Aus 487 - Aus 800**

**69(T)/2025 AUSTRALIA - TASMANIA - Macquarie Harbour - Table Head - Scientific instrument**

Marine and Safety Tasmania Notice M430(T)/2024

A scientific instrument marked by a special buoy exists in position 42° 16'.86 S 145° 16'.84 E.

Mariners are advised to navigate with caution in the area.

**Chart temporarily affected - Aus 177**

**70(T)/2025 AUSTRALIA - TASMANIA - Maria Island - Light buoy off station northeastwards**

*Former Notice - 1034(T)/2023 is cancelled*

Marine and Safety Tasmania Notice M445(T)/2024

The special light buoy, *Fl(5)Y.20s* (42° 31'.8 S 148° 21'.0 E), is off station.

**Chart temporarily affected - Aus 766 - Aus 797**

**71(T)/2025 AUSTRALIA - TASMANIA - Moorland Point to Claytons Bay - Scientific instruments northwards**

Marine and Safety Tasmania Notice M405(T)/2024

Special light buoys, *Fl.Y*, exist in the following positions:

41° 09'.11 S 146° 13'.67 E  
41° 03'.95 S 146° 20'.34 E  
41° 06'.54 S 146° 26'.29 E  
41° 09'.69 S 146° 23'.66 E  
41° 09'.83 S 146° 22'.64 E.

Mariners are advised not to moor to the light buoys and to navigate with caution in the area.

**Chart temporarily affected - Aus 164**

**111(T)/2025 AUSTRALIA - TASMANIA - Mercury Passage - Buoy**

*Former Notice - 1017(T)/2024 is cancelled*

Marine and Safety Tasmania Notice M443(T)/2024

A special pink buoy, exists in position 42° 31'.83 S 148° 01'.69 E.

**Chart temporarily affected - Aus 766 - Aus 797**

**113(T)/2025 AUSTRALIA - TASMANIA - River Derwent - Limekiln Point - Light beacon destroyed**

*Former Notice - 74(T)/2025 is cancelled*

Marine and Safety Tasmania Notice M028(T)/2025

The starboard lateral light beacon, *Fl.G.2s* (42° 50'.80 S 147° 20'.22 E), has been destroyed, a starboard lateral light buoy, *Fl.G.2s*, exist in situ.

Mariners are advised to navigate with caution in the area.

**Chart temporarily affected - Aus 171 - Aus 796**

**198(T)/2025 AUSTRALIA - TASMANIA - Maria Island - Scientific instrument**

Maritime and Safety Tasmania Notice M114(T)/2025

A special light buoy, *Q.Y.*, exists in position 42° 35'.80 S 148° 14'.00 E.

Mariners are advised to navigate with caution in the area.

**Chart temporarily affected - Aus 766 - Aus 797**

**274(T)/2025 AUSTRALIA - TASMANIA - Flinders Island - Lady Barron - Light unlit**

Marine and Safety Tasmania Notice M160(T)/2025

The light, *F.G.3M* (40° 12'.58 S 148° 14'.89 E), is unlit.

Mariners are advised to navigate with caution in the area.

**Chart temporarily affected - Aus 179**

**424(T)/2025 AUSTRALIA - TASMANIA - Burnie - Aquaculture trial and research area northwards**

*Former Notice - 384(T)/2024 is cancelled*

Marine and Safety Tasmania Notice M208(T)/2025, M209(T)/2025

An aquaculture trial and research area marked by special light buoy, *Fl.Y.3s*, exists in an area bounded by the following positions:

40° 56'.68 S 145° 56'.03 E

40° 56'.39 S 145° 56'.59 E

40° 55'.90 S 145° 56'.15 E

40° 56'.18 S 145° 55'.59 E.

All vessels not directly involved in activities with the research project are prohibited from entering the area.

**Chart temporarily affected - Aus 163**

**520(T)/2025 AUSTRALIA - TASMANIA - Devonport - Mersey River - Light beacon destroyed**

Marine and Safety Tasmania Notice M228/2025

The port lateral light beacon, *Fl.R.4s* (41° 11'.13 S 146° 21'.97 E), has been destroyed, a special light buoy, *Q.Y.*, exist in situ.

Mariners are advised to navigate with caution in the area.

**Chart temporarily affected - Aus 164**



## PAPUA NEW GUINEA and SOUTH PACIFIC

### **789(T)/2018 PAPUA NEW GUINEA - Bismarck Sea - Fish aggregating devices**

National Maritime Safety Authority PNG Warning 9/2018

17 fish aggregating devices exist in an area bounded by the following positions:

4° 30'.0 S 149° 55'.0 E

4° 40'.0 S 149° 55'.0 E

4° 40'.0 S 150° 45'.0 E

4° 30'.0 S 150° 45'.0 E.

Mariners are advised to navigate with caution.

**Chart temporarily affected - Aus 4622 (INT 622)**

### **286(P)/2019 PAPUA NEW GUINEA - Madang Harbour - Shoaling**

LADS Flight

Latest survey shows shoaler depths than those charted may exist in an area bounded by the following positions:

05° 04'.51 S 145° 48'.06 E

05° 11'.75 S 145° 47'.82 E

05° 11'.91 S 145° 49'.61 E

05° 10'.14 S 145° 50'.36 E

05° 04'.14 S 145° 48'.99 E.

Mariners are advised to navigate with caution in the area.

Charts will be updated in due course.

**Chart which will be affected - PNG 646**

### **346(T)/2019 PAPUA NEW GUINEA - Huon Gulf - Light buoy off station**

National Maritime Safety Authority PNG Notice 9(T)/2017

The isolated danger light buoy, Q(2)5s (6° 48'.38 S 146° 58'.28 E), is off station.

**Chart temporarily affected - PNG 643**

### **1110(T)/2019 PAPUA NEW GUINEA - Oreore Channel - Light buoy off station**

National Maritime Safety Authority PNG Coastal Navigation Warning 39/2019

The port lateral light buoy, Q.R (10° 13'.68 S 150° 52'.78 E), is off station.

**Chart temporarily affected - PNG 628**

### **668(T)/2020 PAPUA NEW GUINEA - Dauan Island - Light altered**

HMAS *Mermaid*

The light, Fl.R.6s (9° 25'.38 S 142° 32'.07 E), has been temporarily altered to F.R.

**Chart temporarily affected - Aus 841**

### **826(P)/2020 PAPUA NEW GUINEA - Batumata Point - Shoaling**

LADS Flight

Latest survey shows shoaler depths than those charted may exist in and around the islands and reefs in the area between Galovi (Howard) Reef (10° 11'.1 S 148° 08'.7 E) and Eunoro Island (10° 23'.6 S 149° 27'.3 E).

Mariners are advised to navigate with caution in the area.

Charts will be updated in due course.

**Chart which will be affected - PNG 506 - PNG 507 - PNG 623**

**963(T)/2020 PAPUA NEW GUINEA - Caution Bay - Light beacon damaged**

National Maritime Safety Authority PNG Notice 39/2020

The light beacon, *Fl.Bu.2s 8M RL2* (9° 17'.98 S 146° 58'.19 E), is damaged and unlit.

**Chart temporarily affected - PNG 647 - PNG 648**

**118(T)/2021 PAPUA NEW GUINEA - Madehas Island - Light unlit**

National Maritime Safety Authority PNG

The light, *Fl.10s 137m 16M* (5° 27'.63 S 154° 38'.06 E), is unlit.

**Chart temporarily affected - Aus 399 - Aus 4604 (INT 604) - Aus 4622 (INT 622) - PNG 397 - PNG 684**

**985(T)/2021 PAPUA NEW GUINEA - Saibai Island - Shoaling**

*Former Notice - 201(T)/2021 is cancelled*

HMAS *Paluma* , HMAS *Mermaid*

Latest survey indicates shoaler depths than those charted exist in an area bounded by the following positions:

9° 20'.66 S 142° 36'.94 E  
9° 20'.15 S 142° 39'.81 E  
9° 17'.86 S 142° 48'.32 E  
9° 21'.86 S 142° 47'.07 E  
9° 21'.01 S 142° 40'.60 E  
9° 21'.80 S 142° 37'.67 E  
9° 22'.75 S 142° 37'.04 E  
9° 22'.72 S 142° 35'.37 E  
9° 22'.46 S 142° 34'.10 E  
9° 21'.74 S 142° 34'.60 E.

Mariners are advised to navigate with caution in the area.

Charts will be updated in due course.

**Chart temporarily affected - Aus 840 - Aus 841**

**327(T)/2022 PAPUA NEW GUINEA - Bonvouloir Islands - Aulelowa (Hastings) Island - Light unlit**

National Maritime Safety Authority PNG Coastal Navigation Warning 8/2022

The light, *Fl(2)6s 8m 10M* (10° 20'.48 S 151° 52'.07 E), is unlit.

**Chart temporarily affected - PNG 509 - PNG 512**

**785(T)/2022 PACIFIC OCEAN - Scientific instruments**

UKHO

Grey pillar buoys exist in the following positions:

5° 02'.3 N 164° 49'.9 E  
0° 00'.8 N 164° 59'.8 E  
1° 59'.9 S 164° 58'.6 E  
5° 01'.0 S 165° 10'.0 E  
8° 02'.2 S 164° 46'.4 E.

**Chart temporarily affected - Aus 4604 (INT 604)**

**794(T)/2022 PAPUA NEW GUINEA - Huon Gulf - Fish aggregating devices**

National Maritime Safety Authority PNG Coastal Navigation Warning 8/2018

23 fish aggregating devices exist in an area bounded by the following positions:

7° 00'.0 S 147° 40'.0 E  
7° 55'.0 S 147° 40'.0 E  
7° 55'.0 S 148° 50'.0 E  
7° 00'.0 S 148° 50'.0 E.

Mariners are advised to navigate with caution.

**Chart temporarily affected - Aus 4622 (INT 622) - PNG 386 - PNG 521 - PNG 522 - PNG 523**

**829(T)/2022 PAPUA NEW GUINEA - Dekatuwe (Bright) Island - Light beacon unlit**

*Former Notice - 500(T)/2022 is cancelled*

National Maritime Safety Authority PNG Notice 10/2022, 14/2022

The light beacon, *Fl.2.5s 16m 10M* (10° 31'.89 S 151° 12'.74 E), is unlit.

**Chart temporarily affected - PNG 509**

**830(T)/2022 PAPUA NEW GUINEA - Kanaweya (Shortland) Reefs to Nuakata Passage - Light beacons unlit**

National Maritime Safety Authority PNG Notice 15/2022, 16/2022

The light beacons, *Fl(3)12s 11m 10M* (10° 30'.70 S 151° 08'.13 E) and *Fl(2)10s 7m 6M* (10° 23'.60 S 151° 00'.77 E), are unlit.

**Chart temporarily affected - PNG 508 - PNG 509 - PNG 628**

**831(T)/2022 PAPUA NEW GUINEA - Wadei Island - Light beacon unlit**

National Maritime Safety Authority PNG Notice 17/2022

The starboard lateral light beacon, *Fl(2)G.8s 7m 3M* (2° 39'.45 S 150° 37'.68 E), is unlit.

**Chart temporarily affected - PNG 543 - PNG 666**

**278(T)/2023 PAPUA NEW GUINEA - Boli Point - Trobriand Islands - Light unlit**

National Maritime Safety Authority PNG

The light, *Fl.G.5s* (08° 33'.77 S 151° 01'.10 E) is unlit.

**Chart temporarily affected - PNG 516 - PNG 637**

**279(T)/2023 PAPUA NEW GUINEA - Bomatu Point - Trobriand Islands - Light unlit**

National Maritime Safety Authority PNG

The light, *Fl(3)15s 31m 10M* (08° 24'.09 S 151° 07'.20 E) is unlit.

**Chart temporarily affected - PNG 516 - PNG 637**

**282(T)/2023 PAPUA NEW GUINEA - Galagalohi (Gallows) Reef - Goschen Strait - Light unlit**

National Maritime Safety Authority PNG

The light, *Fl.5s 7m 10M* (10° 15'.44 S 151° 10'.39 E), is unlit.

**Chart temporarily affected - PNG 509 - PNG 513**

**283(T)/2023 PAPUA NEW GUINEA - Kitava Island - Trobriand Islands - Light unlit**

National Maritime Safety Authority PNG

The light, *Q* (08° 37'.70 S 151° 18'.34 E) is unlit.

**Chart temporarily affected - PNG 515 - PNG 516 - PNG 637**

**285(T)/2023 PAPUA NEW GUINEA - Tamiaris Reef - Laughlan Islands - Light unlit**

National Maritime Safety Authority PNG

The light, *Fl(2)8s* (09° 16'.84 S 153° 39'.38 E), is unlit.

**Chart temporarily affected - PNG 514**

**974(T)/2023 PAPUA NEW GUINEA - Buka Passage - Light beacon unlit**

National Maritime Safety Authority PNG Coastal Navigation Warning 23/2023

The light beacon, *Fl.2.5s 7m 10M* (5° 24'.39 S 154° 42'.69 E), is unlit.

**Chart temporarily affected - Aus 399 - Aus 4622 (INT 622) - PNG 397 - PNG 684**

**975(T)/2023 PAPUA NEW GUINEA - Rabaul - Light unlit**

National Maritime Safety Authority PNG Coastal Navigation Warning 24/2023

The light, *Fl.5s 38m 8M* (4° 11'.71 S 152° 10'.08 E), is unlit.

**Chart temporarily affected - PNG 680**

**289(T)/2024 PAPUA NEW GUINEA - Queen Carola Harbour - Light beacon unlit**

National Maritime Safety Authority PNG Coastal Navigation Warning 7/2024

The light beacon, *Fl.R.6s* (5° 08'.18 S 154° 32'.92 E), is unlit.

**Chart temporarily affected - PNG 684**

**290(T)/2024 PAPUA NEW GUINEA - Redscar Head - Light unlit**

National Maritime Safety Authority PNG Coastal Navigation Warning 5/2024

The light, *Fl.10s 77m 10M* (9° 15'.91 S 146° 54'.03 E), is unlit.

**Chart temporarily affected - PNG 379 - PNG 647**

**746(P)/2024 PAPUA NEW GUINEA - Rabaul - Coastline**

Australian Hydrographic Office

The coastline between Karavia Bay (4° 16'.84 S 152° 09'.83 E) and Nodup (4° 11'.66 S 152° 12'.32 E) may differ to what is currently charted.

Mariners are advised to navigate with caution in the area.

Charts will updated in due course.

**Chart which will be affected - PNG 545 - PNG 554 - PNG 680**

**411(T)/2025 PAPUA NEW GUINEA - New Ireland - Cape Sueusat - Light unlit**

National Maritime Safety Authority PNG Coastal Navigation Warning 2/2025

The light, *Fl.5s 9m 10M* (2° 37'.02 S 150° 46'.60 E), is unlit.

**Chart temporarily affected - PNG 392 - PNG 393 - PNG 543 - PNG 666**

**445(T)/2025 PAPUA NEW GUINEA - Kitumala (Fortification) Point - Light unlit**

National Maritime Safety Authority PNG Coastal Navigation Warning 4/2025

The light, *Fl(2)8s 27m 8M* (6° 19'.16 S 147° 48'.35 E), is unlit.

**Chart temporarily affected - Aus 4622 (INT 622) - PNG 386 - PNG 387**

EAST TIMOR

NIL

## MISCELLANEOUS

### **678(T)/2017 SOLOMON ISLANDS - Lungga Point - Light beacon unlit** Australian Hydrographic Service

The light beacon, *Fl(3)20s 10m 5M* (9° 24'.26 S 160° 01'.66 E), is unlit.

**Chart temporarily affected - SLB 101 - SLB 201**

### **91(P)/2018 SOLOMON ISLANDS - Ghizo Island - Shoaling** Secretariat of the Pacific Community

Latest survey shows shoaler depths than those charted may exist in and around the islands and reefs in the area between Naru Island (8° 08'.3 S 156° 55'.1 E) and Sepo Island (8° 03'.2 S 156° 49.5 E).

Mariners are advised to navigate with caution in the area.

Charts will be updated in due course.

**Chart which will be affected - SLB 102 - SLB 301 - SLB 302**

### **987(T)/2018 TIMOR-LESTE - Dili - Light unlit** HMAS *Paluma*

The light, *Fl.R.4s* (8° 33'.20 S 125° 34'.70 E), is unlit.

**Chart temporarily affected - Aus 901**

### **406(P)/2020 SOLOMON ISLANDS - Port Noro to Kuri Point - Shoaling** *Former Notice - 184(P)/2020 is cancelled* Australian Hydrographic Office , HMAS *Leeuwin*

Latest survey shows shoaler depths than those charted may exist in areas bounded by the following positions:

8° 15'.07 S 157° 11'.77 E  
8° 15'.43 S 157° 11'.52 E  
8° 15'.78 S 157° 11'.47 E  
8° 15'.78 S 157° 12'.00 E  
8° 15'.07 S 157° 11'.89 E;  
and  
8° 19'.68 S 157° 11'.83 E  
8° 21'.27 S 157° 12'.62 E  
8° 21'.09 S 157° 13'.14 E  
8° 19'.05 S 157° 12'.30 E  
8° 19'.17 S 157° 11'.76 E.

Mariners are advised to navigate with caution in the area.

Charts will be updated in due course.

**Chart which will be affected - SLB 102**

### **80(P)/2022 SOUTHERN OCEAN - Antarctica - Mawson - Shoaling** Australian Antarctic Division

Latest survey indicates shoaling in the approach to Mawson in the following locations

67° 25'.00 S 062° 46'.20 E  
67° 29'.58 S 062° 52'.92 E  
67° 30'.08 S 062° 50'.45 E  
67° 30'.70 S 062° 53'.35 E  
67° 30'.45 S 062° 51'.56 E  
67° 35'.00 S 062° 52'.25 E

Mariners are advised to navigate with caution in the area.

Charts will be updated in due course.

**Chart which will be affected - Aus 600 (INT 9036)**

**515(T)/2023 SOLOMON ISLANDS - Nusatupe Island - Topmarks destroyed**

*Former Notice - 847(T)/2018 is cancelled*

Solomon Islands Maritime Authority Notice 7/2023

The topmark on light beacons, *Fl(3)R.10s 10m 5M* (8° 05'.55 S 156° 51'.81 E) and *Fl(2)G.10s 8m 3M* (8° 05'.81 S 156° 51'.66 E), have been destroyed.

**Chart temporarily affected - SLB 102 - SLB 301 - SLB 302**

**228(T)/2024 SOUTHERN OCEAN - Macquarie Island - Scientific instrument southwestwards**

CSIRO

A subsurface scientific instrument, 90m below the surface, exists in the position 55° 47'.62 S 152° 43'.56 E.

**Chart temporarily affected - Aus 4074 (INT 74)**

**387(T)/2024 SOLOMON ISLANDS - Maru Sound - Nort East Entrance - Light buoys off station**

Solomon Islands Maritime Authority

The port lateral light buoy, *Fl.R.3s* (9° 46'.81 S 160° 51'.08 E), and the starboard lateral light buoy, *Fl.G.3s* (9° 46'.54 S 160° 50'.48 E), are off station.

**Chart temporarily affected - SLB 101**

**506(T)/2024 SOLOMON ISLANDS - Lengo Channel - Taivu Point - Light beacon unlit**

Solomon Islands Maritime Safety Administration

The light beacon, *LFl(2)20s 10m 5M* (9° 24'.54 S 160° 21'.02 E), is unlit.

**Chart temporarily affected - SLB 201 - SLB 304**

**768(P)/2024 SOLOMON ISLANDS - Diamond Narrows to Munda Bar - Shoaling**

Aero Asahi Corporation

Latest survey indicates shoaler depths than those charted may exist between Diamond Narrows (8° 15'.62 S 157° 11'.69 E) and Munda Bar (8° 20'.94 S 157° 12'.72 E).

Mariners are advised to navigate with caution in the area.

Charts will be updated in due course.

**Chart which will be affected - SLB 102 - SLB 302**

**938(P)/2024 SOLOMON ISLANDS - Blackett Strait - Shoaling**

Aero Asahi Corporation

Latest survey indicates shoaler depths than those charted may exist in Blackett Strait in an area between longitudes 157° 06'.68 E and 157° 09'.94 E.

Drying coral exists in position 8° 07'.94 S 157° 09'.74 E.

Mariners are advised to navigate with caution in the area.

Charts will be updated in due course.

**Chart which will be affected - SLB 102**

**939(T)/2024 SOLOMON ISLANDS - Honiara - Point Cruz - Light buoys off station**

Solomon Islands Maritime Authority Notice 3/2024, 10/2024

The special light buoy, *Fl. Y. 10s* (9° 25'.45 S 159° 57'.53 E), is off station.

The special light buoy, *Fl. Y. 3s* (9° 25'.28 S 159° 57'.23 E), is off station.

**Chart temporarily affected - SLB 101**

**940(T)/2024 SOLOMON ISLANDS - Honiara - Kua Bay - Light buoy unlit**

Solomon Islands Maritime Authority Notice 12/2024

The isolated danger light buoy, *Fl(2)10s* (9° 25'.89 S 159° 57'.76 E), is unlit.

**Chart temporarily affected - SLB 101**

**276(T)/2025 SOLOMON ISLANDS - New Georgia Group - South Island - Light unlit**

Solomon Islands Maritime Authority NTM 01/2025

The light, *Fl. 10s 11m 10M* (08° 48'.88 S 157° 45'.22 E), is unlit;

**Chart temporarily affected - Aus 4060 (INT 60) - Aus 4604 (INT 604) - SLB 302 - SLB 1001 - SLB 1002**

**425(T)/2025 SOLOMON ISLANDS - Russell Islands - Live firing southwards**

Solomon Islands Maritime Authority Notice 10/2025

During the period 27 to 29 May 2025, live firing will be conducted in an area bounded by the following positions:

9° 29'.00 S 159° 11'.00 E

9° 29'.00 S 159° 26'.00 E

9° 15'.00 S 159° 26'.00 E

9° 15'.00 S 159° 11'.00 E.

Mariners are prohibited from entering the designated area during the specified period and are advised to maintain a minimum clearance of 5M around the area.

**Chart temporarily affected - SLB 303 - SLB 304**