

To accompany Australian Notice to Mariners 1061/2025

FAIRWAY AREAS C AND D

Vessels waiting to enter the port are not permitted to anchor inside port limits. Vessels entering the port should not proceed westward of the pilot boarding place without permission of Sydney VTS (VHF Ch13).

Note for chart Aus 198

To accompany Australian Notice to Mariners 1065/2025

ENVIRONMENTALLY SENSITIVE SEA
AREA (ESSA)

Areas of this chart are Environmentally Sensitive Sea Areas (ESSA). Areas within this marine protected area have restrictions on access and activities. For details see Mariners Handbook for Australian Waters AHP 20.

Note for chart Aus 367

To accompany Australian Notice to Mariners 1065/2025

ENVIRONMENTALLY SENSITIVE SEA
AREA (ESSA)

Areas of this chart are Environmentally Sensitive Sea Areas (ESSA). Areas within this marine protected area have restrictions on access and activities. For details see Mariners Handbook for Australian Waters AHP 20.

Note for chart Aus 611

To accompany Australian Notice to Mariners 1065/2025

ENVIRONMENTALLY SENSITIVE SEA
AREA (ESSA)

Areas of this chart are Environmentally Sensitive Sea Areas (ESSA). Areas within this marine protected area have restrictions on access and activities. For details see Mariners Handbook for Australian Waters AHP 20.

Note for chart Aus 613

To accompany Australian Notice to Mariners 1065/2025

ENVIRONMENTALLY SENSITIVE SEA
AREA (ESSA)

Areas of this chart are Environmentally Sensitive Sea Areas (ESSA). Areas within this marine protected area have restrictions on access and activities. For details see Mariners Handbook for Australian Waters AHP 20.

Note for chart Aus 821

To accompany Australian Notice to Mariners 1061/2025

FAIRWAY AREAS A AND B

Vessels waiting to enter the port are not permitted to anchor inside port limits. Vessels entering the port should not proceed westward of the pilot boarding place without permission of Sydney VTS (VHF Ch13).

Note for chart Aus 200

To accompany Australian Notice to Mariners 1065/2025

ENVIRONMENTALLY SENSITIVE SEA
AREA (ESSA)

Areas of this chart are Environmentally Sensitive Sea Areas (ESSA). Areas within this marine protected area have restrictions on access and activities. For details see Mariners Handbook for Australian Waters AHP 20.

Note for chart Aus 490

To accompany Australian Notice to Mariners 1065/2025

ENVIRONMENTALLY SENSITIVE SEA
AREA (ESSA)

Areas of this chart are Environmentally Sensitive Sea Areas (ESSA). Areas within this marine protected area have restrictions on access and activities. For details see Mariners Handbook for Australian Waters AHP 20.

Note for chart Aus 612

To accompany Australian Notice to Mariners 1065/2025

ENVIRONMENTALLY SENSITIVE SEA
AREA (ESSA)

Areas of this chart are Environmentally Sensitive Sea Areas (ESSA). Areas within this marine protected area have restrictions on access and activities. For details see Mariners Handbook for Australian Waters AHP 20.

Note for chart Aus 816

To accompany Australian Notice to Mariners 1065/2025

ENVIRONMENTALLY SENSITIVE SEA
AREA (ESSA)

Areas of this chart are Environmentally Sensitive Sea Areas (ESSA). Areas within this marine protected area have restrictions on access and activities. For details see Mariners Handbook for Australian Waters AHP 20.

Note for chart Aus 829

To accompany Australian Notice to Mariners 1065/2025

ENVIRONMENTALLY SENSITIVE SEA
AREA (ESSA)
Areas of this chart are Environmentally Sensitive Sea Areas (ESSA). Areas within this marine protected area have restrictions on access and activities. For details see Mariners Handbook for Australian Waters AHP 20.

Note for chart Aus 830

To accompany Australian Notice to Mariners 1065/2025

ENVIRONMENTALLY SENSITIVE SEA
AREA (ESSA)
Areas of this chart are Environmentally Sensitive Sea Areas (ESSA). Areas within this marine protected area have restrictions on access and activities. For details see Mariners Handbook for Australian Waters AHP 20.

Note for chart Aus 832

To accompany Australian Notice to Mariners 1065/2025

ENVIRONMENTALLY SENSITIVE SEA
AREA (ESSA)
Areas of this chart are Environmentally Sensitive Sea Areas (ESSA). Areas within this marine protected area have restrictions on access and activities. For details see Mariners Handbook for Australian Waters AHP 20.

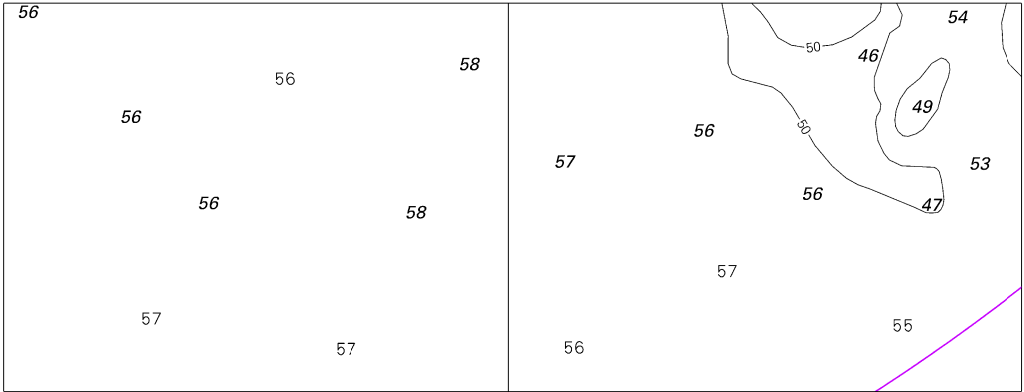
Note for chart Aus 831

To accompany Australian Notice to Mariners 1065/2025

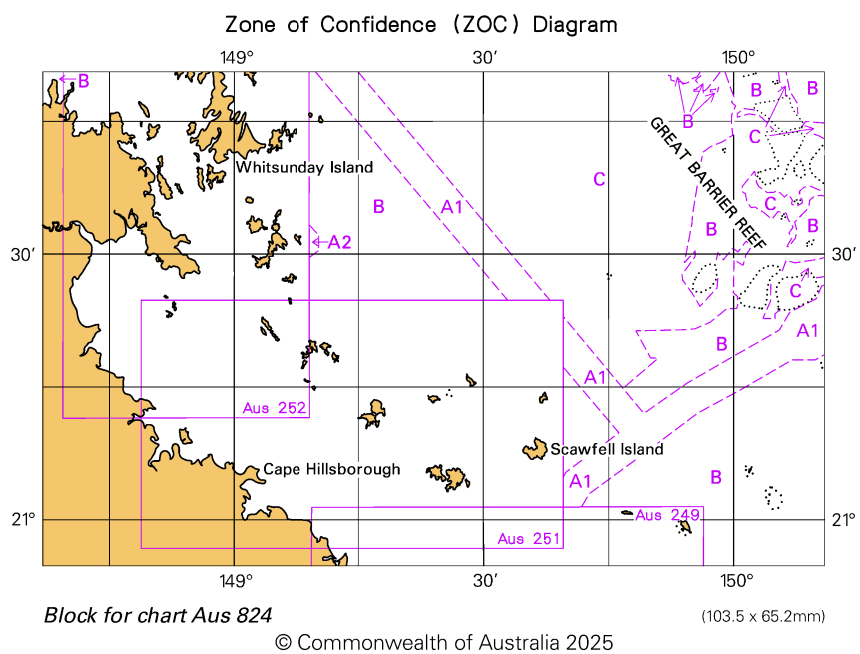
ENVIRONMENTALLY SENSITIVE SEA
AREA (ESSA)
Areas of this chart are Environmentally Sensitive Sea Areas (ESSA). Areas within this marine protected area have restrictions on access and activities. For details see Mariners Handbook for Australian Waters AHP 20.

Note for chart Aus 837

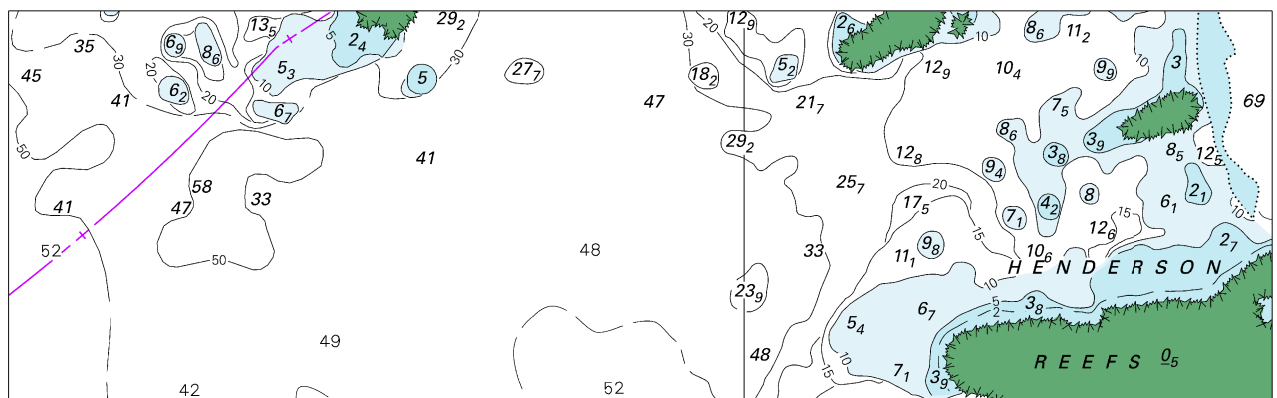
To accompany Australian Notice to Mariners 1062/2025



To accompany Australian Notice to Mariners 1062/2025



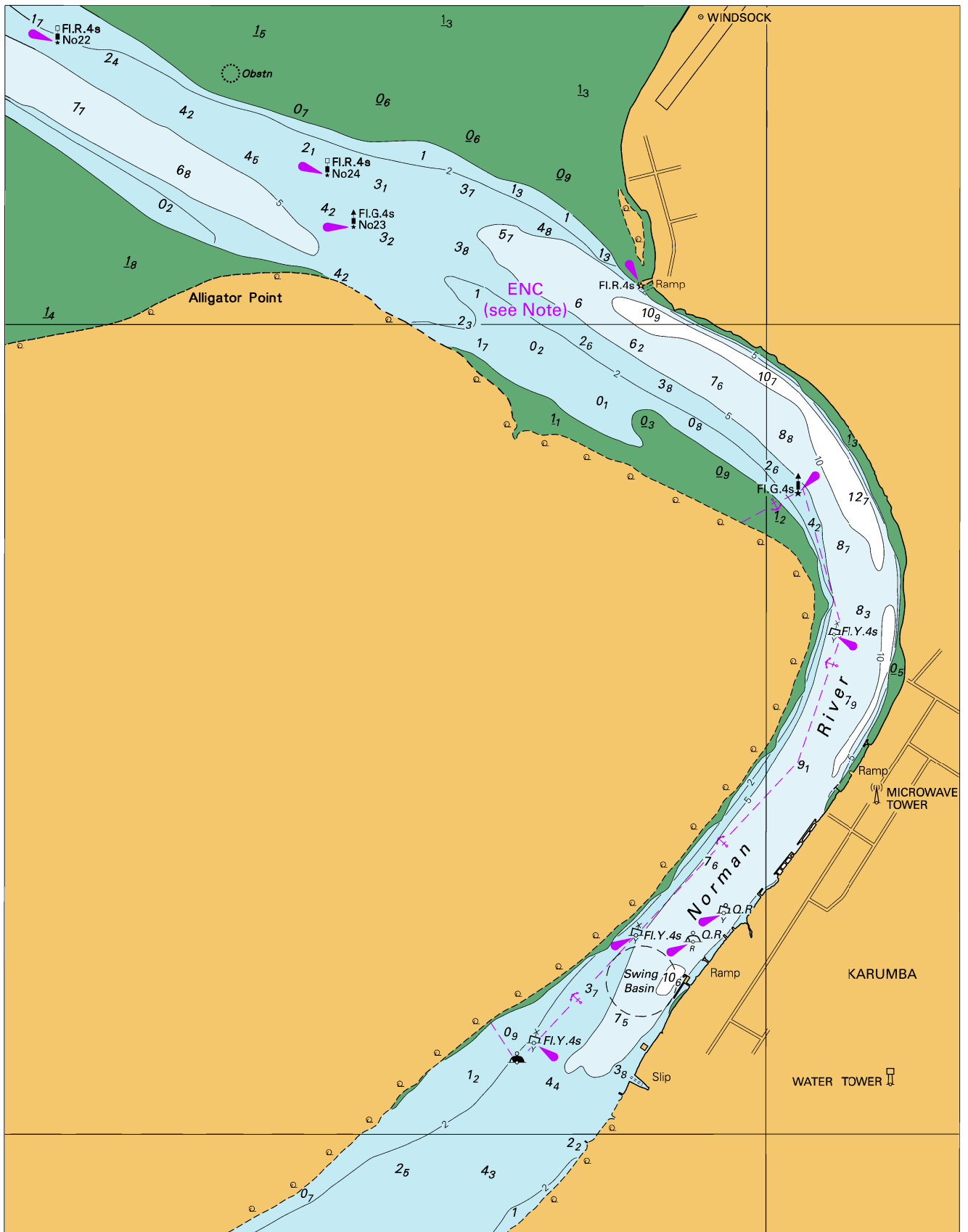
To accompany Australian Notice to Mariners 1062/2025



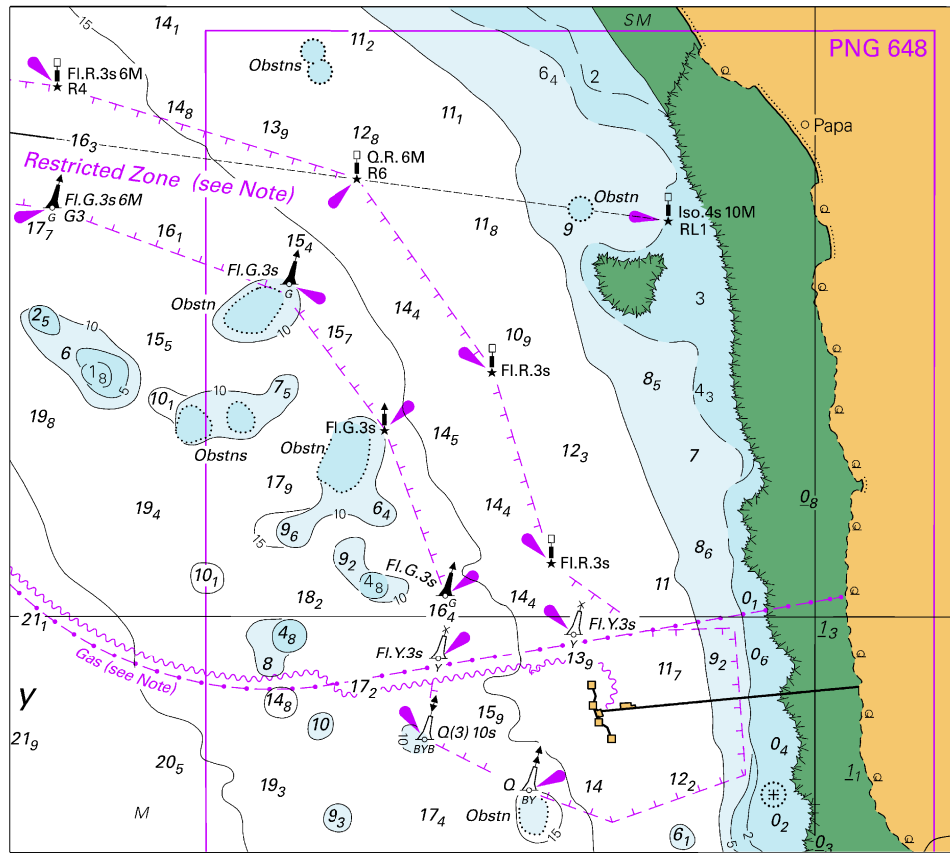
Block B for chart Aus 824

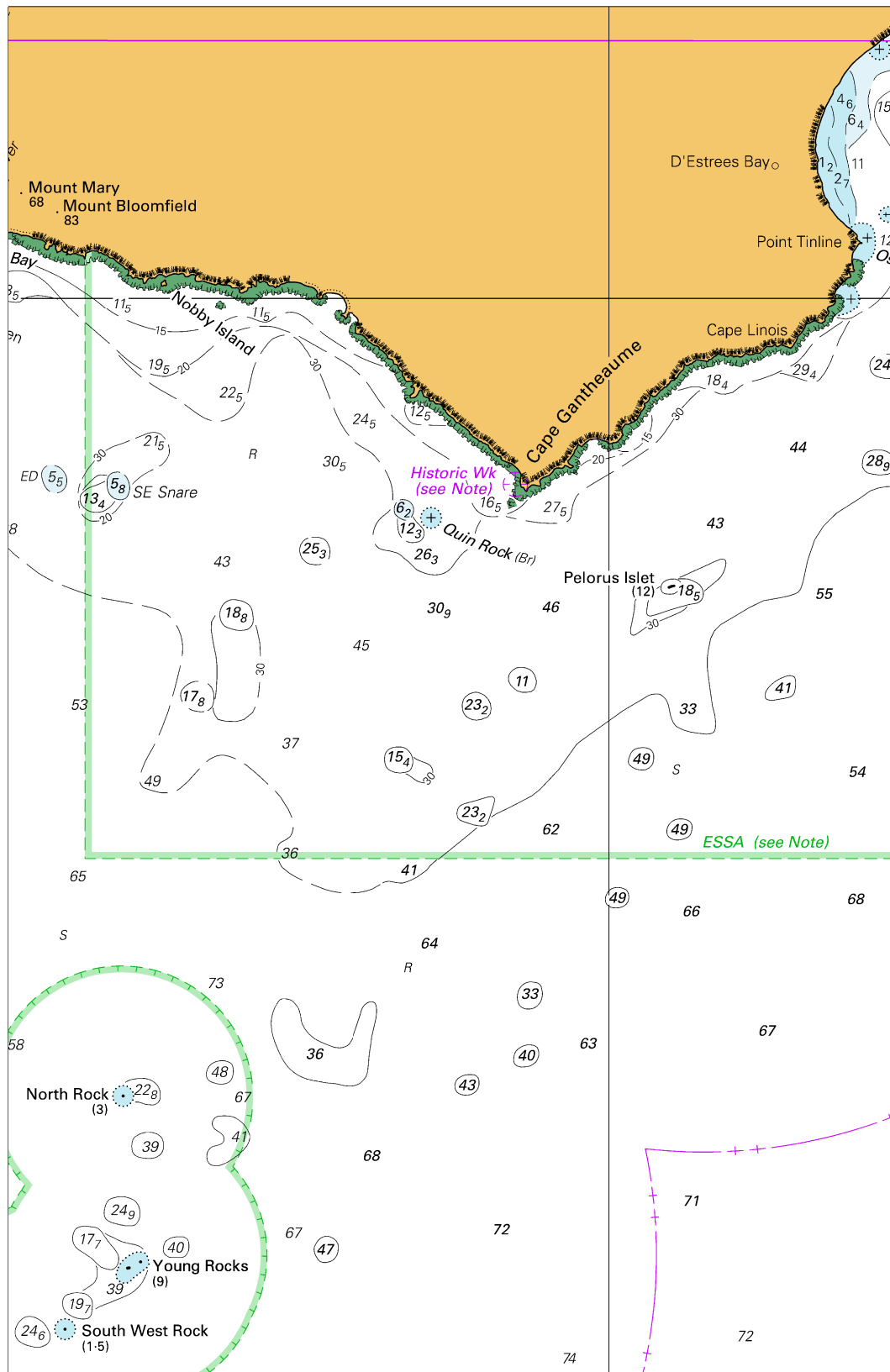
© Commonwealth of Australia 2025

(167.0 x 51.2mm)

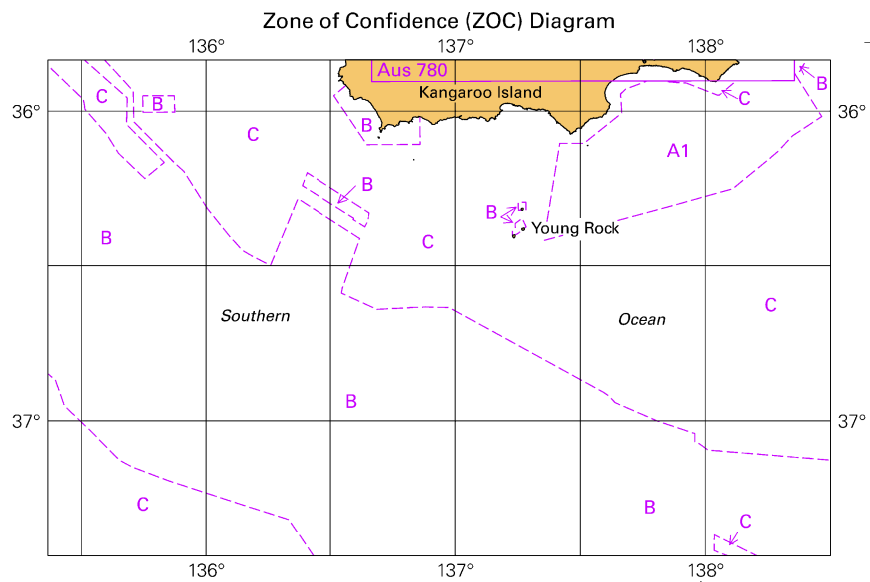


To accompany Australian Notice to Mariners 1066/2025





To accompany Australian Notice to Mariners 1072/2025

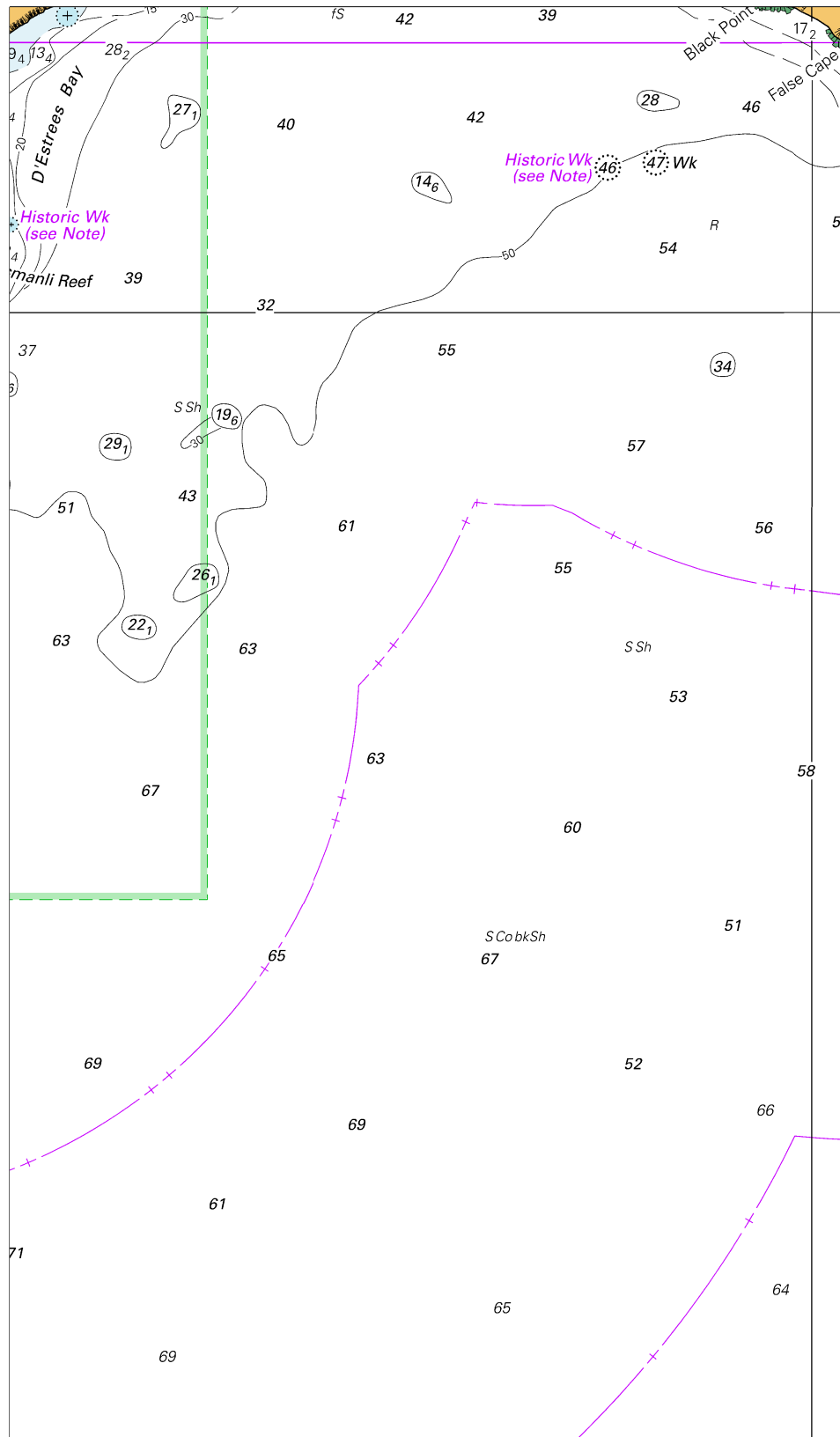


Block for chart Aus 346

(103.4 x 65.7mm)

© Commonwealth of Australia 2025

To accompany Australian Notice to Mariners 1072/2025

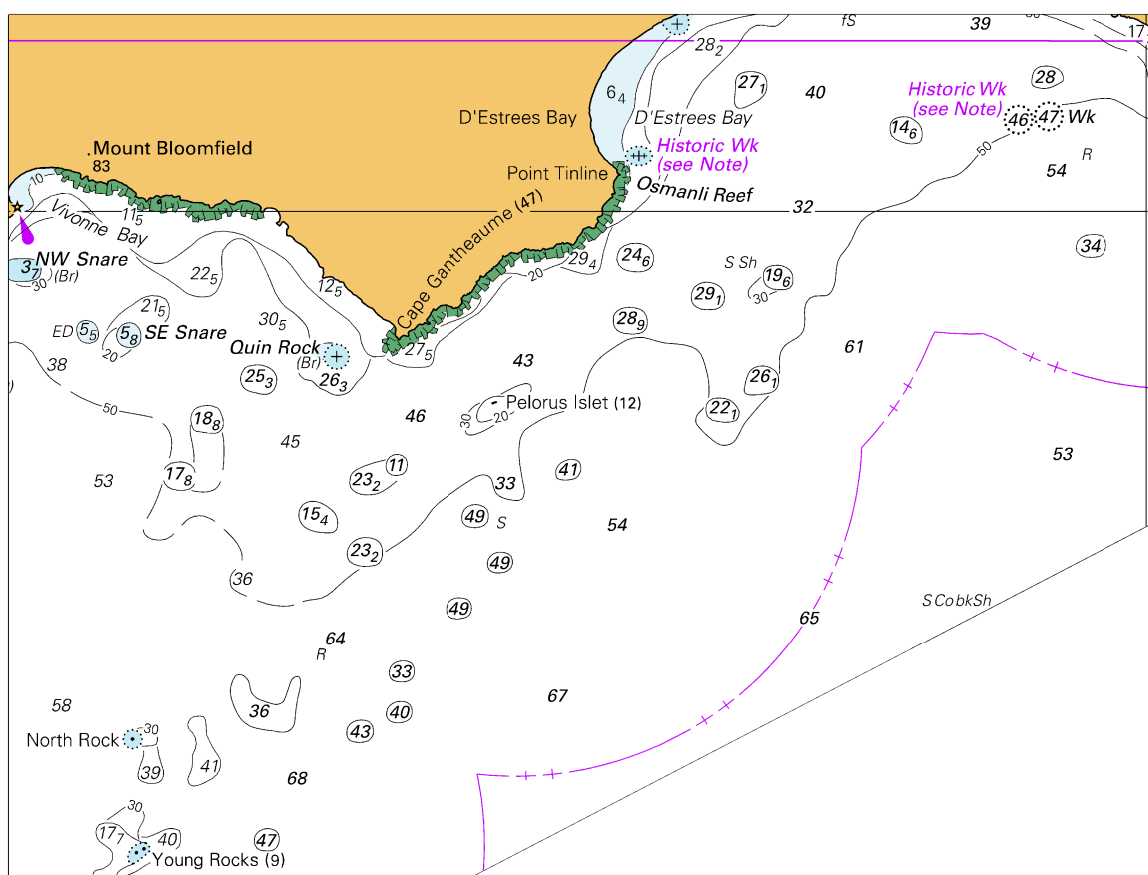


Block B for chart Aus 346

© Commonwealth of Australia 2025

(125.1 x 215.3mm)

To accompany Australian Notice to Mariners 1072/2025

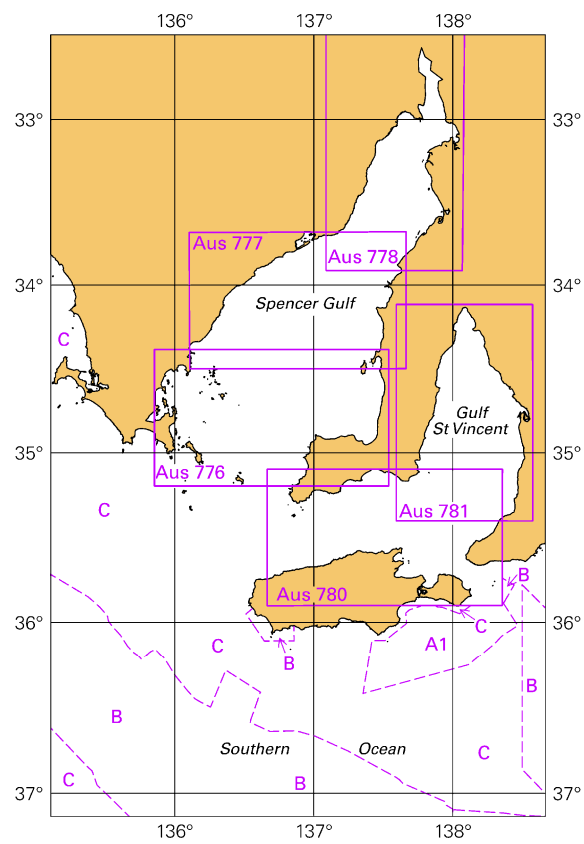


Block for chart Aus 485

© Commonwealth of Australia 2025

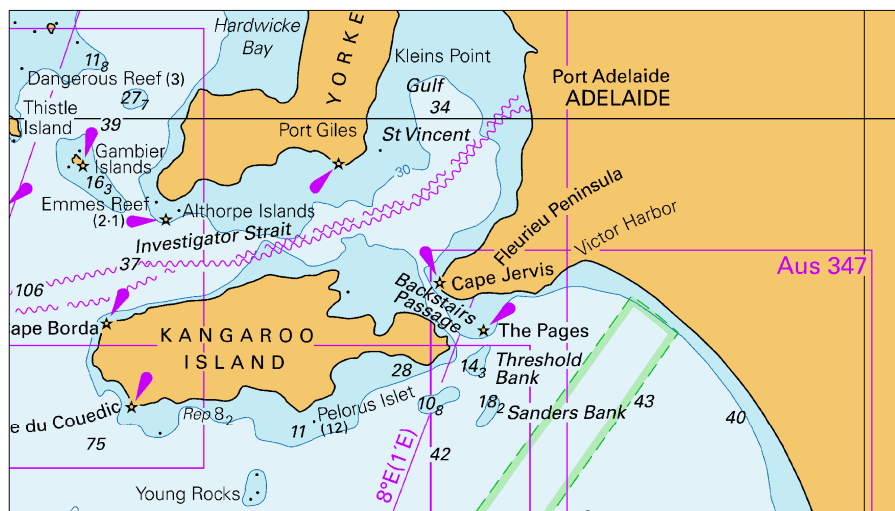
(152.0 x 114.6mm)

To accompany Australian Notice to Mariners 1072/2025



Block for chart Aus 485 (66.7 x 103.4mm)
© Commonwealth of Australia 2025

To accompany Australian Notice to Mariners 1072/2025



Block for chart Aus 4709

© Commonwealth of Australia 2025

(117.3 x 66.4mm)