

To accompany Australian Notice to Mariners 729/2025

HISTORIC WRECK WITH PROTECTED ZONE

This historic shipwreck lies within a protected or no entry zone as legislated by Commonwealth or State authorities. These zones may cover an area up to a radius of 800 metres from the designated wreck location. Entry into these protected zones requires a permit. For details see Mariners Handbook for Australian Waters AHP 20.

Note for chart Aus 825

To accompany Australian Notice to Mariners 735/2025

HISTORIC WRECK WITH PROTECTED ZONE

This historic shipwreck lies within a protected or no entry zone as legislated by Commonwealth or State authorities. These zones may cover an area up to a radius of 3200 metres from the designated wreck location. Entry into these protected zones requires a permit. For details see Mariners Handbook for Australian Waters AHP 20.

Note for chart Aus 4602

To accompany Australian Notice to Mariners 735/2025

HISTORIC WRECK WITH PROTECTED ZONE

This historic shipwreck lies within a protected or no entry zone as legislated by Commonwealth or State authorities. These zones may cover an area up to a radius of 3200 metres from the designated wreck location. Entry into these protected zones requires a permit. For details see Mariners Handbook for Australian Waters AHP 20.

Note for chart Aus 4604

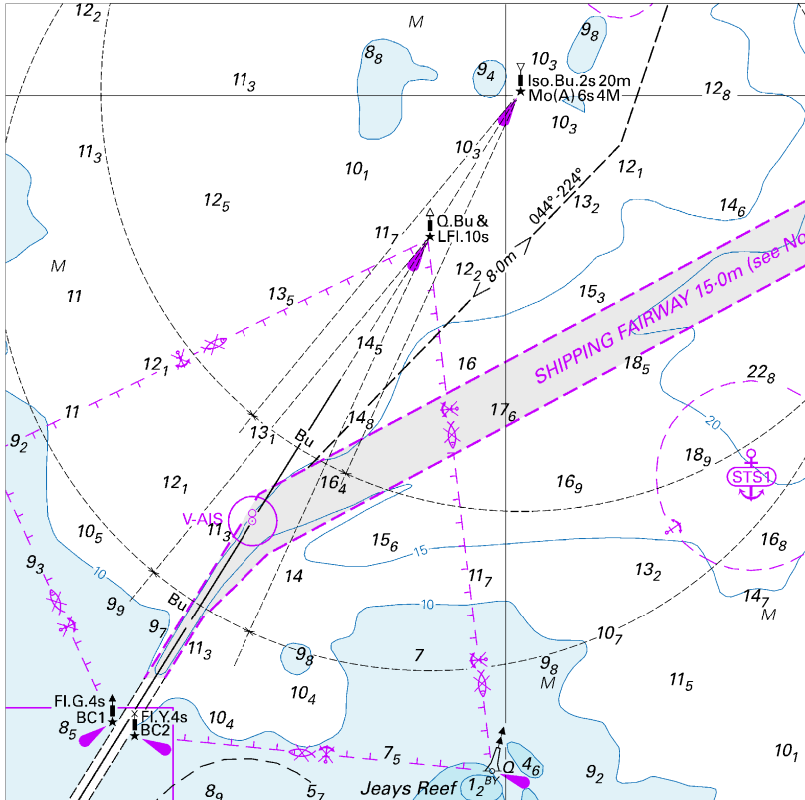
To accompany Australian Notice to Mariners 739/2025

HISTORIC WRECK WITH PROTECTED ZONE

This historic shipwreck lies within a protected or no entry zone as legislated by Commonwealth or State authorities. These zones may cover an area up to a radius of 3200 metres from the designated wreck location. Entry into these protected zones requires a permit. For details see Mariners Handbook for Australian Waters AHP 20.

Note for chart Aus 4708

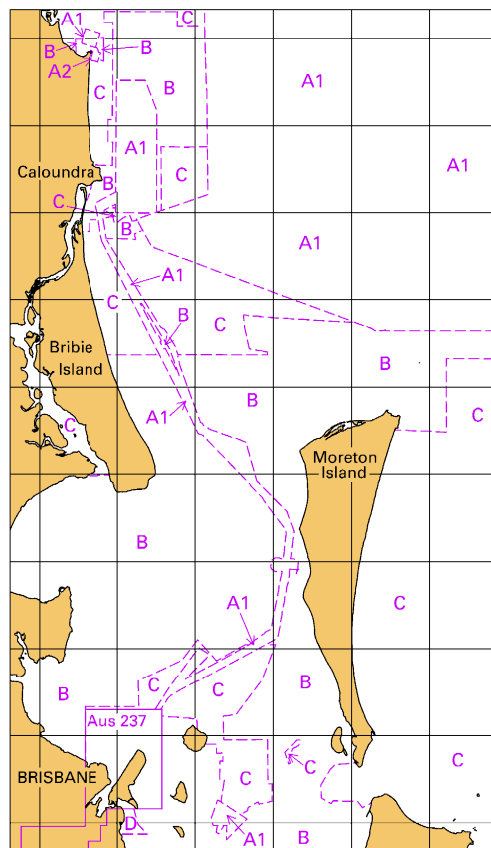
To accompany Australian Notice to Mariners 732/2025



Block for chart Aus 236 © Commonwealth of Australia 2025

(105.7 x 105.8mm)

To accompany Australian Notice to Mariners 732/2025

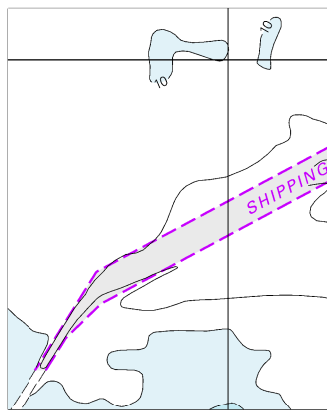


Block for chart Aus 236

(66.8 x 112.8mm)

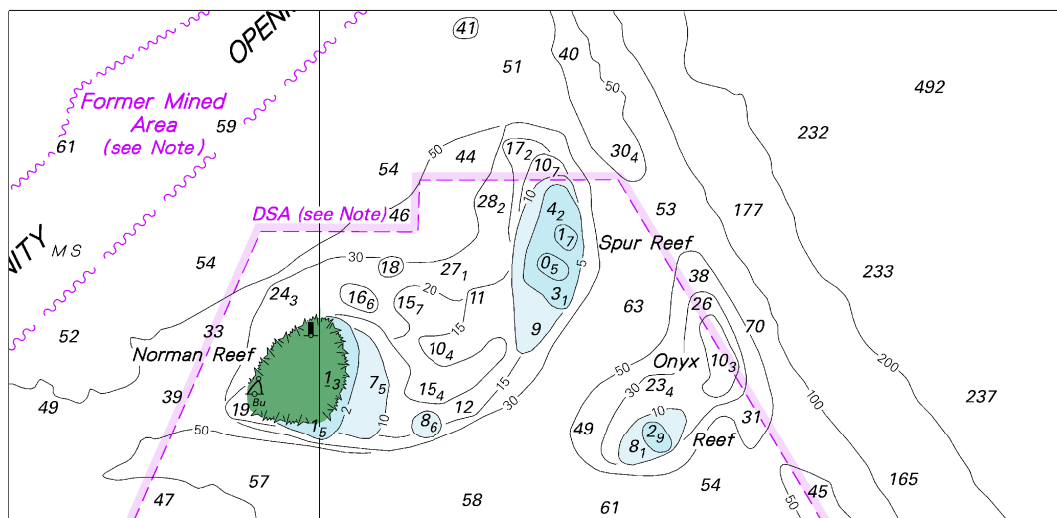
© Commonwealth of Australia 2025

To accompany Australian Notice to Mariners 732/2025



Block for chart Aus 814 (42.9 x 53.1mm)
© Commonwealth of Australia 2025

To accompany Australian Notice to Mariners 734/2025



Block for chart Aus 831

© Commonwealth of Australia 2025

(140.0 x 67.8mm)