



AUSTRALIAN NOTICES TO MARINERS

Notices 266 - 310

**Including
Cumulative List – April 2024
List of Temporary and Preliminary Notices in force** 

Published fortnightly by the Australian Hydrographic Office

Australian Notices to Mariners are the authority for correcting charts and publications published by the Australian Hydrographic Office covering Australia, Papua New Guinea, Solomon Islands, Australian Antarctic Territory and Timor-Leste.

Commodore R.L. PHILLIPS RAN
Hydrographer of Australia

SECTIONS.

- I. **Australian Notices to Mariners, including blocks and notes.**
- II. **Hydrographic Reports.**

SUPPLEMENTS.

- I. **Tracings**
 - II. **Cumulative List of Australian Notices to Mariners.**
 - III. **Cumulative List of Temporary and Preliminary Australian Notices to Mariners.**
 - IV. **Temporary and Preliminary Notices in force.**
-
-

© Commonwealth of Australia 2024

This work is copyright. Apart from any use permitted under the Copyright Act 1968, no part may be reproduced by any process, adapted, communicated or commercially exploited without prior written permission from The Commonwealth represented by the Australian Hydrographic Office.

IMPORTANT NOTICE

This edition of Notices to Mariners includes all significant information affecting AHO products which the AHO has become aware of since the last edition. All reasonable efforts have been made to ensure the accuracy and completeness of the information, including third party information, on which these updates are based. The AHO regards third parties from which it receives information as reliable, however the AHO cannot verify all such information and errors may therefore exist. The AHO does not accept liability for errors in third party information.

GENERAL INSTRUCTIONS

The substance of these notices should be inserted on the charts affected.

Bearings are referred to the true compass and are reckoned clockwise from North; those relating to lights are given as seen by an observer from seaward.

Positions quoted in notices relate to WGS84 which is the horizontal datum for all charts produced by the Australian Hydrographic Office.

The range quoted for a light is its nominal range.

Depths are with reference to the chart datum of each chart. Heights are above mean high water springs or mean higher high water, as appropriate.

The capital letter (P) or (T) after the number of any notice denotes a preliminary or temporary notice respectively, which are contained separately at the end of the permanent notices.

REPORTING OF DANGERS

Mariners are particularly requested to notify the AUSTRALIAN HYDROGRAPHIC OFFICE, Locked Bag 8801 Wollongong, NSW 2500 (e-mail datacentre@hydro.gov.au or, alternatively by filling in and submitting the [Hydrographic Notes](#) forms located on the web site – www.hydro.gov.au), immediately on the discovery of new dangers or suspected dangers to navigation. For changes or defects in aids to navigation notify AusSAR (Fax 02-6230 6868 or email rccaus@amsa.gov.au).

AUTHORISED USE

Copies of Australian notices are available free of charge from the Australian Hydrographic Office (AHO) website (www.hydro.gov.au) and through the eNotices (email) service (www.hydro.gov.au/enotices/enotices.htm).

Individual Notices may be copied for the purpose of inserting Notice substance on official charts and publications. Paper copies may be printed by chart agents and distributed to customers on a cost recovery basis. Participating chart agents are listed on the AHO website as providing a 'Paper Notices to Mariners' service (www.hydro.gov.au/webapps/jsp/agents/agents-list.jsp). Copies of the notices may not be sold for profit without prior written agreement.

NUMERICAL INDEX OF NOTICES TO MARINERS

Edition No 8

Notices	Aus Chart, INT Chart, ENC Cell, AHP, BA Pubs
266	Aus 64, 236, PNG 679
267	PNG 680
268	Aus 198, 808
269	Aus 195, 808
270	Aus 830
271	Aus 814, 815
272	Aus 814
273	Aus 4722, INT 722
274	Aus 743, 744
275	Aus 116, 337
276	Aus 485, 780
277	Aus 171
278	Cumulative List of Australian Notices to Mariners - April 2024
279(T)	Aus 811
280(T)	Aus 237
281(T)	Aus 237
282(T)	Aus 245
283(T)	Aus 245
284(T)	Aus 249, 250, 823, 4602, INT 602
285(T)	Aus 236
286(T)	Aus 256
287(T)	Aus 4060, 4604, 4622, INT 60, 604, 622, PNG 545, 546
288(T)	PNG 647, 648
289(T)	PNG 684
290(T)	PNG 379, 647
291(T)	Aus 299
292(T)	Aus 839
293(T)	Aus 23
294(T)	Aus 25, 26
295(T)	Aus 14
296(P)	Aus 318, 319, 728
297(T)	Aus 335
298(T)	Aus 73
299(T)	Aus 116, 755
300(T)	Aus 65, 327, 742
301(T)	Aus 327, 742
302(T)	Aus 116
303(T)	Aus 53, 326
304(T)	Aus 117
305(T)	Aus 781
306(T)	Aus 144
307(T)	Aus 143, 349, 357, 487, 800, 801, 802
308(T)	Aus 173, 795
309(T)	Aus 487, 790
310(T)	TEMPORARY AND PRELIMINARY NOTICES

NUMERICAL INDEX OF CHARTS AFFECTED

Edition No 8

Aus Chart	Notices
Aus 14	295(T)
Aus 23	293(T)
Aus 25	294(T)
Aus 26	294(T)
Aus 53	303(T)
Aus 64	266
Aus 65	300(T)
Aus 73	298(T)
Aus 116	275, 299(T), 302(T)
Aus 117	304(T)
Aus 143	307(T)
Aus 144	306(T)
Aus 171	277
Aus 173	308(T)
Aus 195	269
Aus 198	268
Aus 236	266, 285(T)
Aus 237	280(T), 281(T)
Aus 245	282(T), 283(T)
Aus 249	284(T)
Aus 250	284(T)
Aus 256	286(T)
Aus 299	291(T)
Aus 318	296(P)
Aus 319	296(P)
Aus 326	303(T)
Aus 327	300(T), 301(T)
Aus 335	297(T)
Aus 337	275
Aus 349	307(T)
Aus 357	307(T)
Aus 485	276
Aus 487	307(T), 309(T)
Aus 728	296(P)
Aus 742	300(T), 301(T)
Aus 743	274
Aus 744	274
Aus 755	299(T)
Aus 780	276
Aus 781	305(T)
Aus 790	309(T)
Aus 795	308(T)
Aus 800	307(T)
Aus 801	307(T)
Aus 802	307(T)
Aus 808	268, 269
Aus 811	279(T)
Aus 814	271, 272
Aus 815	271
Aus 823	284(T)
Aus 830	270
Aus 839	292(T)
Aus 4060	287(T)
Aus 4602	284(T)

Aus Chart	Notices
Aus 4604	287(T)
Aus 4622	287(T)
Aus 4722	273
PNG 379	290(T)
PNG 545	287(T)
PNG 546	287(T)
PNG 647	288(T), 290(T)
PNG 648	288(T)
PNG 679	266
PNG 680	267
PNG 684	289(T)

INT Chart	Notices
INT 60	287(T)
INT 602	284(T)
INT 604	287(T)
INT 622	287(T)
INT 722	273

266 AUSTRALIA - Products - New Charts, New Editions, Withdrawn Charts

Australian Hydrographic Office

New Charts

<i>Chart</i>	<i>Title and Geographical limits</i>	<i>Scale</i>	<i>Publication Date</i>	<i>Remarks</i>
NIL				

New Electronic Navigation Chart (Aus ENC)

<i>Cell Name</i>	<i>Title</i>	<i>Publication Date</i>	<i>Remarks</i>
NIL			

New Editions and Withdrawn Charts

<i>Chart</i>	<i>Title</i>	<i>Scale</i>	<i>Publication Date</i>	<i>Remarks</i>
Aus 64 (Edition 2)	Australia - West Coast - Western Australia - Approaches to Port of Ashburton and Onslow	1:50 000	12 April 2024	New edition with general updating throughout; including new port limits, anchorage areas and shipping fairway. Chart Aus 64 Edition 1 dated 4 November 2016 is now superseded and must be withdrawn from use.
Aus 236 (Edition 8)	Australia - East Coast - Queensland - Moreton Bay	1:80 000	12 April 2024	New edition with general updating throughout; including new routing measures. Chart Aus 236 Edition 7 dated 28 October 2022 is now superseded and must be withdrawn from use.
PNG 679 (Edition 2)	Papua New Guinea - New Britain - Duke of York Group Plan: Mioko Harbour	1:37 500 1:12 500	12 April 2024	New edition with general updating throughout; including new bathymetric data. Chart PNG 679 Edition 1 dated 23 August 2019 is now superseded and must be withdrawn from use.

Chart permanently withdrawn

Charts listed above as withdrawn no longer meet chart carriage requirements and should be marked as "superseded" and replaced with the new chart/ new edition listed prior to passage through the area covered by the new chart.

When placing orders with a chart agent between notice of forthcoming edition and its publication, mariners should advise whether their order pertains to the current edition or the new edition.

For further details refer to the AHO website at www.hydro.gov.au for new edition and new chart stock arrival information.

267 AUSTRALIA - Products - New Charts and New Editions to be published shortly

Australian Hydrographic Office

New Charts to be published shortly

Chart	Title	Scale	Remarks
NIL			

New Editions to be published shortly

Chart	Title	Scale	Remarks
PNG 680	Papua New Guinea - New Britain - Approaches to Blanche Bay Plan: Simpson and Matupit Harbour	1:75 000 1:12 500	New edition with general updating throughout; including new bathymetric data.

268 AUSTRALIA - NEW SOUTH WALES - Botany Bay and Port Hacking - Pilot boarding place; chart note; chart limitsMV *Outer Limit***Aus 198 [238/2024]**

Insert	accompanying chart note, PILOT BOARDING PLACE pilot boarding place, centred on	33° 57'.6 S 34° 01'.011 S	151° 05'.8 E 151° 18'.888 E
--------	---	------------------------------	--------------------------------

Aus 808 [239/2024]

Insert	magenta continuous line, between	33° 56'.61 S 33° 56'.61 S 34° 05'.44 S 34° 05'.44 S	151° 18'.24 E 151° 19'.75 E 151° 19'.75 E 151° 18'.24 E
	magenta continuous line, between	33° 56'.61 S 34° 05'.44 S	151° 01'.63 E 151° 01'.63 E
Move	magenta legend, <i>Aus 198</i> to	34° 05'.3 S 34° 05'.29 S	151° 17'.6 E 151° 19'.29 E
Delete	magenta continuous line, between	33° 56'.6 S 34° 05'.4 S	151° 18'.2 E 151° 18'.2 E
	magenta continuous line, between	33° 56'.6 S 34° 05'.4 S 34° 05'.4 S	151° 01'.6 E 151° 01'.5 E 151° 01'.5 E

269 AUSTRALIA - NEW SOUTH WALES - Port Kembla - Chart note

Port Authority of New South Wales

Aus 195 [179/2024]

Replace	chart note, PORT KEMBLA VESSEL TRAFFIC SERVICE AREA, with accompanying chart note	34° 20'.8 S	150° 54'.5 E
---------	--	-------------	--------------

Aus 808 [268/2024]

Replace	chart note, PORT KEMBLA VESSEL TRAFFIC SERVICE AREA, with accompanying chart note	34° 05'.5 S	150° 55'.0 E
---------	--	-------------	--------------

270 AUSTRALIA - QUEENSLAND - Great Barrier Reef - Jenny Louise Shoal - Scientific instrument*Former Notice - 109(T)/2024 is cancelled*

Department of Environment, Science and Innovation QLD

Aus 830 [122/2023]

Delete	light buoy	16° 44'.6 S	146° 24'.5 E
--------	------------	-------------	--------------

271 AUSTRALIA - QUEENSLAND - Moreton Bay - North West Bypass Channel - Shipping fairway

Maritime Safety Queensland

Aus 814 [95/2024]

Move	magenta legend, SHIPPING	26° 56'.8 S	153° 12'.2 E
	to	26° 56'.64 S	153° 12'.73 E

Delete	shipping fairway, between	26° 55'.4 S	153° 11'.3 E
		27° 02'.6 S	153° 15'.3 E
		27° 01'.0 S	153° 14'.7 E
		26° 55'.4 S	153° 11'.5 E

Aus 815 [240/2024]

Move	magenta legend, SHIPPING	26° 56'.8 S	153° 12'.2 E
	to	26° 55'.24 S	153° 11'.74 E

Delete	shipping fairway, between	26° 53'.6 S	153° 10'.5 E
		26° 51'.8 S	153° 09'.3 E
		27° 02'.6 S	153° 15'.3 E
		27° 01'.0 S	153° 14'.7 E
		26° 53'.6 S	153° 10'.5 E

272 AUSTRALIA - QUEENSLAND - North Stradbroke Island - Point Lookout - Scientific instrument eastwards*Former Notice - 110(T)/2024 is cancelled*

Department of Environment, Science and Innovation QLD

Aus 814 [271/2024]

Delete	light buoy	27° 23'.5 S	153° 52'.7 E
--------	------------	-------------	--------------

273 INDONESIA - Sumba - Light

UKHO Notice 16/1680/2024

Aus 4722 (INT 722) [244/2024]

Amend	light to <i>Fl(2+1)R.12M</i>	9° 38'.0 S	120° 16'.0 E
-------	------------------------------	------------	--------------

274 AUSTRALIA - WESTERN AUSTRALIA - Ashburton - Port limit; anchorages; shipping fairway

Pilbara Ports Authority Notice A2/2024

*Note: position of existing chart notes may vary on certain charts.***Aus 743 [247/2024]**

Insert	accompanying block A	21° 17'.0 S	114° 52'.5 E
	accompanying block B	21° 35'.0 S	114° 53'.0 E

Aus 744 [246/2024]

Insert	accompanying block B	21° 26'.0 S	114° 55'.0 E
	accompanying block A	21° 27'.5 S	114° 45'.5 E
	accompanying chart note, SHIPPING FAIRWAY	22° 09'.5 S	114° 50'.5 E

275 AUSTRALIA - WESTERN AUSTRALIA - Hopetoun - Light

Department of Transport WA Notice WA1104/3/2024

Aus 116 (Mary Ann Haven) [NE 1/3/2024]

Amend	light to <i>Dir F.WRG.56m 6/4M & Fl.2s 15M</i>	33° 56'.11 S	120° 08'.18 E
-------	--	--------------	---------------

Aus 337 [142/2024]

Amend	light to <i>Dir F.WRG.56m 6/4M & Fl.2s 15M</i>	33° 56'.1 S	120° 08'.2 E
-------	--	-------------	--------------

276 AUSTRALIA - SOUTH AUSTRALIA - Kangaroo Island - Penneshaw - Light

Department for Infrastructure and Transport SA

Aus 485 [248/2024]

Amend light range to 7M

35° 43'.0 S

137° 56'.7 E

Aus 780 [248/2024]

Amend light range to 7M

35° 43'.0 S

137° 56'.7 E

277 AUSTRALIA - TASMANIA - Wedge Bay - White Beach - Nav aids

Marine and Safety Tasmania Notice M145(T)/2024

Aus 171 [216/2024]

Replace beacon with light, Fl.5s

43° 06'.6 S

147° 43'.9 E

278 AUSTRALIA - Cumulative List of Australian Notices to Mariners - April 2024

Australian Hydrographic Office

The Cumulative List of Australian Notices to Mariners - April 2024 is issued as an [accompanying supplement](#). It lists all permanent notices affecting charts in the Area of Australian Charting Responsibility published in the preceding two years since Edition 7 of 2022 dated 1 April 2022, and includes Edition 8 of 2024 dated 12 April 2024. It will be revised in October 2024.

A supplement is available on the website which is revised fortnightly.

279(T)/2024 AUSTRALIA - NEW SOUTH WALES - Port Macquarie - Fish aggregating device relocated eastwards
NSW Department of Primary Industries

The special light buoy, *Fl. Y.5s FAD (Sep-Jun)* (31° 24'.57 S 153° 04'.73 E), has been temporarily relocated to position 31° 25'.93 S 153° 04'.48 E.

Chart temporarily affected - Aus 811

280(T)/2024 AUSTRALIA - QUEENSLAND - Brisbane River - Hamilton Reach - Dredging operations completed
Former Notice - 12(T)/2024 is cancelled
Maritime Safety Queensland

Cancel this notice on receipt.

Chart formerly affected - Aus 237

281(T)/2024 AUSTRALIA - QUEENSLAND - Brisbane River - Lytton and Quarantine Reach - Light beacon damaged
Maritime Safety Queensland Notice 151(T)/2024

The port lateral light beacon, *Q.Bu & Q.R (Q Day) No6F* (27° 25'.22 S 153° 08'.51 E), is damaged.

The night light, *Q.Bu*, and the day light, *Q*, should not be relied upon for navigation. The night light, *Q.R*, is displaying correctly.

Chart temporarily affected - Aus 237

282(T)/2024 AUSTRALIA - QUEENSLAND - Gladstone - South Passage Island - Scientific instrument recovered
Former Notice - 563(T)/2023 is cancelled
Maritime Safety Queensland

Cancel this notice on receipt.

Chart formerly affected - Aus 245

283(T)/2024 AUSTRALIA - QUEENSLAND - Gladstone - North Channel to North Passage Island - Scientific instruments

Former Notice - 811(T)/2023 is cancelled
Maritime Safety Queensland Notice 141(T)/2024

Special light buoys, *Fl. Y.6s*, exist in the following positions:

23° 46'.05 S 151° 10'.09 E

23° 46'.97 S 151° 18'.38 E.

Chart temporarily affected - Aus 245

284(T)/2024 AUSTRALIA - QUEENSLAND - Hay Point - Light restored
Former Notice - 65(T)/2024 is cancelled
Maritime Safety Queensland

Cancel this notice on receipt.

Chart formerly affected - Aus 249 - Aus 250 - Aus 823 - Aus 4602 (INT 602)

285(T)/2024 AUSTRALIA - QUEENSLAND - Moreton Bay - Deception Bay - Wreck salvaged
Former Notice - 155(T)/2024 is cancelled
Maritime Safety Queensland

Cancel this notice on receipt.

Chart formerly affected - Aus 236

286(T)/2024 AUSTRALIA - QUEENSLAND - Townsville - Light beacon restored

Former Notice - 188(T)/2024 is cancelled
Maritime Safety Queensland Notice 163/2024

Cancel this notice on receipt.

Chart formerly affected - Aus 256

287(T)/2024 PAPUA NEW GUINEA - Cape Lambert - Light relit northwards

Former Notice - 890(T)/2023 is cancelled
National Maritime Safety Authority PNG Coastal Navigation Warning 4/2024

Cancel this notice on receipt.

Chart formerly affected - Aus 4060 (INT 60) - Aus 4604 (INT 604) - Aus 4622 (INT 622) - PNG 545 - PNG 546

288(T)/2024 PAPUA NEW GUINEA - Caution Bay - Light beacon unlit

National Maritime Safety Authority PNG Coastal Navigation Warning 8/2024

The light beacon, *Fl.G.3s 6M G9* (9° 19'.93 S 146° 58'.67 E), is unlit.

Chart temporarily affected - PNG 647 - PNG 648

289(T)/2024 PAPUA NEW GUINEA - Queen Carola Harbour - Light beacon unlit

National Maritime Safety Authority PNG Coastal Navigation Warning 7/2024

The light beacon, *Fl.R.6s* (5° 08'.18 S 154° 32'.92 E), is unlit.

Chart temporarily affected - PNG 684

290(T)/2024 PAPUA NEW GUINEA - Redscar Head - Light unlit

National Maritime Safety Authority PNG Coastal Navigation Warning 5/2024

The light, *Fl.10s 77m 10M* (9° 15'.91 S 146° 54'.03 E), is unlit.

Chart temporarily affected - PNG 379 - PNG 647

291(T)/2024 AUSTRALIA - TORRES STRAIT - Horn Island - Wasaga - Wreck salvaged

Former Notice - 286(T)/2023 is cancelled
Maritime Safety Queensland

Cancel this notice on receipt.

Chart formerly affected - Aus 299

292(T)/2024 AUSTRALIA - TORRES STRAIT - Meggi-Maituine Reef - Scientific instruments

Maritime Safety Queensland Notice 140(T)/2024, CSIRO

Subsurface scientific instruments exist as follows:

<i>Position</i>	<i>Metres below surface</i>
10° 18'.00 S 143° 01'.80 E	23.2
10° 24'.00 S 143° 06'.00 E	27.6.

Chart temporarily affected - Aus 839

293(T)/2024 AUSTRALIA - NORTHERN TERRITORY - Apsley Strait - Medina Inlet - Light buoy off station

Northern Territory Government Notice 5(T)/2024

The starboard lateral light buoy, *Fl.G.4s* (11° 51'.64 S 130° 35'.07 E), is off station.

Chart temporarily affected - Aus 23

294(T)/2024 AUSTRALIA - NORTHERN TERRITORY - Darwin - Emery Point - Scientific instruments recovered
Former Notice - 1022(T)/2023 is cancelled
 Northern Territory Government

Cancel this notice on receipt.

Chart formerly affected - Aus 25 - Aus 26

295(T)/2024 AUSTRALIA - NORTHERN TERRITORY - Groote Eylandt - Milner Bay - Wharf damaged; obstructions; light unlit; light buoy unlit
 Department of Infrastructure, Planning and Logistics NT Notice 4(T)/2024

The main wharf has been damaged and obstructions may exist in the area. An exclusion zone exists in an area bounded by the coast and the following positions:

13° 51'.54 S 136° 25'.07 E
 13° 51'.55 S 136° 25'.03 E
 13° 51'.52 S 136° 24'.94 E
 13° 51'.55 S 136° 24'.86 E
 13° 51'.77 S 136° 24'.98 E
 13° 51'.73 S 136° 25'.05 E
 13° 51'.63 S 136° 25'.03 E
 13° 51'.57 S 136° 25'.17 E.

Any vessel wanting to enter the exclusion zone must get permission from Groote Eylandt Port Superintendent.

Access to the barge landings (13° 51'.52 S 136° 25'.08 E) is declared safe to a depth of 5m for commercial vessels.

The light, *F.R* (13° 51'.55 S 136° 24'.92 E), is unlit.

The special light buoy, *Fl.Y.2s* (13° 51'.80 S 136° 24'.70 E), is unlit.

Mariners are advised to navigate with caution in the area.

Chart temporarily affected - Aus 14

296(P)/2024 AUSTRALIA - WESTERN AUSTRALIA - Bougainville Peninsula - Cape Bougainville - Rock
 Department of Primary Industries and Regional Development WA

An uncharted submerged rock has been reported in position 13° 54'.91 S 126° 02'.56 E.

Mariners are advised to navigate with caution in the area.

Charts will updated in due course.

Chart which will be affected - Aus 318 - Aus 319 - Aus 728

297(T)/2024 AUSTRALIA - WESTERN AUSTRALIA - Cape Naturaliste - Scientific instrument northwestwards
Former Notice - 821(T)/2023 is cancelled
 JASCO Applied Sciences (Australia)

A subsurface scientific instrument, 5m above the seabed, exists in position 33° 20'.07 S 114° 46'.94 E.

Chart temporarily affected - Aus 335

298(T)/2024 AUSTRALIA - WESTERN AUSTRALIA - Carnarvon - Gascoyne River - Teggs Channel - Dredging operations completed
Former Notice - 623(T)/2023 is cancelled
 Department of Transport WA

Cancel this notice on receipt.

Chart formerly affected - Aus 73

299(T)/2024 AUSTRALIA - WESTERN AUSTRALIA - Geographe Bay - Scientific instruments recovered

Former Notice - 769(T)/2023 is cancelled
Department of Transport WA

Cancel this notice on receipt.

Chart formerly affected - Aus 116 - Aus 755

300(T)/2024 AUSTRALIA - WESTERN AUSTRALIA - Lowendal Islands - Abutilon Island - Well plug and abandonment works

Former Notice - 73(T)/2024 is cancelled
Santos

Drill rig *Valaris 107* and support vessels are conducting well plug and abandonment works at Simpson Alpha (20° 40'.33 S 115 35'.13 E) and Simpson Bravo (20° 40'.40 S 115 35'.09 E) wells.

Mariners are advised to navigate with caution in the area. 5M clearance requested.

Chart temporarily affected - Aus 65 - Aus 327 - Aus 742

301(T)/2024 AUSTRALIA - WESTERN AUSTRALIA - Montebello Islands - Ah Chong Island - Well plug and abandonment works southeastwards completed

Former Notice - 261(T)/2024 is cancelled
Santos

Cancel this notice on receipt.

Chart formerly affected - Aus 327 - Aus 742

302(T)/2024 AUSTRALIA - WESTERN AUSTRALIA - Port Geographe Marina - Dredging operations completed

Former Notice - 773(T)/2023 is cancelled
Department of Transport WA

Cancel this notice on receipt.

Chart formerly affected - Aus 116

303(T)/2024 AUSTRALIA - WESTERN AUSTRALIA - Port Hedland - Scientific instruments

Former Notice - 77(T)/2024 is cancelled
Pilbara Ports Authority Notice PH6/2024

Subsurface scientific instruments, 1m above the seabed, exist as follows:

<i>Position</i>	<i>Remarks</i>
20° 12'.93 S 118° 29'.34 E	
20° 13'.24 S 118° 31'.92 E	marked by a special light buoy, <i>Fl. Y. 3s</i>
20° 15'.33 S 118° 32'.46 E	marked by a special light buoy, <i>Fl. Y. 3s</i>
20° 15'.35 S 118° 29'.37 E.	

Chart temporarily affected - Aus 53 - Aus 326

304(T)/2024 AUSTRALIA - WESTERN AUSTRALIA - South Fremantle - Scientific instruments westwards recovered

Former Notice - 629(T)/2023 is cancelled
Department of Transport WA

Cancel this notice on receipt.

Chart formerly affected - Aus 117

305(T)/2024 AUSTRALIA - SOUTH AUSTRALIA - Gulf St Vincent - Port Gawler - Scientific instruments
Department for Infrastructure and Transport SA Notice 20(T)/2024

Subsurface scientific instruments exist on the seabed, with a minimum safe clearance of 2m, in the following positions:
34° 41'.78 S 138° 26'.09 E
34° 41'.98 S 138° 25'.18 E
34° 42'.13 S 138° 25'.72 E.

Mariners are advised to navigate with caution in the area.

Chart temporarily affected - Aus 781

306(T)/2024 AUSTRALIA - VICTORIA - Port Phillip - Weeroona Bay - Light buoys unlit

Former Notice - 1032(T)/2023 is cancelled
Parks Victoria Notice 464(T)/2023, 144(T)/2024

The special light buoys, *Fl. Y. 5s* (38° 18'.67 S 144° 42'.55 E and 38° 18'.57 S 144° 42'.68 E), are unlit.

Chart temporarily affected - Aus 144

307(T)/2024 AUSTRALIA - BASS STRAIT - Survey operations completed

Former Notice - 200(T)/2024 is cancelled
EGS Survey Pty Ltd

Cancel this notice on receipt.

Chart formerly affected - Aus 143 - Aus 349 - Aus 357 - Aus 487 - Aus 800 - Aus 801 - Aus 802

308(T)/2024 AUSTRALIA - TASMANIA - Bruny Island - Labillardiere Peninsula - Point Labillardiere - Scientific instrument

Marine and Safety Tasmania Notice M143(T)/2024

A special light buoy, *Fl. Y. 1.5s*, exists in position 43° 26'.45 S 147° 04'.68 E.

Chart temporarily affected - Aus 173 - Aus 795

309(T)/2024 AUSTRALIA - TASMANIA - Robbins Island to Rocky Cape - Scientific instruments northeastwards recovered

Former Notice - 135(T)/2024 is cancelled
Maritime and Safety Tasmania Notice M139(T)/2024

Cancel this notice on receipt.

Chart formerly affected - Aus 487 - Aus 790

310(T)/2024 AUSTRALIA - TEMPORARY AND PRELIMINARY NOTICES

Former Notice - 48(T)/2024 is cancelled
 Australian Hydrographic Office

<i>Notice</i>	<i>Charts affected</i>	<i>Locality and Subject</i>
754/2022	Aus357 487	BASS STRAIT Racon non operational
788/2022	Aus614	CORAL SEA <i>Diamond Islets</i> Shoaling
494/2019	Aus611 612	<i>Kenn Reefs and Frederick Reefs</i> Shoaling
21/2021	Aus618	<i>Middleton Reef</i> Unexploded ordnance
989/2017	Aus377	<i>Portlock Reefs</i> Reefs
228/2022 608/2023	Aus198 Aus198	NEW SOUTH WALES <i>Botany Bay</i> Light beacon destroyed Harbour works
701/2023	Aus200 489 809	<i>Cape Banks to Cabbage Tree Bay</i> Scientific instruments eastwards
709/2016 880/2021	Aus813 Aus813	<i>Cape Byron</i> Obstructions eastwards Light buoy off station northwards
808/2023	Aus222	<i>Clarence River</i> Scientific instrument
133/2023	Aus813	<i>Crabbes Creek Beach</i> Wreck eastwards
105/2024	Aus812	<i>Green Bluff</i> Scientific instruments eastwards
604/2020	Aus807 808	<i>Jervis Bay</i> Light buoy
997/2020	Aus806 807	<i>Merimbula Bay to Broulee Island</i> Scientific instruments
106/2024	Aus806 807	<i>Montague Island</i> Scientific instruments
105/2021 61/2022 855/2023	Aus200 Aus200 Aus200	<i>Port Jackson</i> Jetties ruined Scientific instruments Drilling operations
549/2020 217/2024	Aus195 Aus195	<i>Port Kembla</i> Exclusion zone Harbour works
279/2024	Aus811	<i>Port Macquarie</i> Fish aggregating device relocated eastwards
750/2023	Aus209	<i>Port Stephens</i> Scientific instruments
107/2024	Aus810	<i>Seal Rocks</i> Scientific instruments

310(T)/2024 AUSTRALIA - TEMPORARY AND PRELIMINARY NOTICES

<i>Notice</i>	<i>Charts affected</i>	<i>Locality and Subject</i>
727/2022	Aus489 806 807 808 809 810 4601 4602	<i>Tathra to Seal Rocks</i> Obstructions
1050/2023	Aus192	<i>Twofold Bay</i> Wave attenuator
152/2024	Aus806 807 808	<i>Twofold Bay to Wattamolla</i> Fish aggregating devices off station eastwards
193/2023	Aus807	<i>Ulladulla</i> Wreck northeastwards
NORTHERN TERRITORY		
832/2022	Aus23	<i>Apsley Strait</i> Light buoy off station
293/2024	Aus23	Light buoy off station
891/2023	Aus22 309 310	<i>Bathurst Island</i> Pipe laying operations; survey operations westwards
253/2024	Aus309	Shoaling
765/2023	Aus20	<i>Clarence Strait</i> Obstructions; wrecks
211/2021	Aus26	<i>Darwin</i> Scientific instruments
622/2023	Aus26	Light beacon unlit
893/2023	Aus25	Mooring buoy off station
1059/2023	Aus25 26	Dredging operations
678/2023	Aus310	<i>Goodrich Bank</i> Light buoy off station northwestwards
295/2024	Aus14	<i>Groote Eylandt</i> Wharf damaged; obstructions; light unlit; light buoy unlit
QUEENSLAND		
461/2017	Aus268	<i>Bowen</i> Obstruction
213/2018	Aus236	<i>Bribie Island</i> Shoaling
27/2018	Aus236	<i>Brisbane</i> Harbour works
875/2022	Aus237	<i>Brisbane River</i> Obstructions
877/2022	Aus237	Wreck
99/2023	Aus237	Obstruction; light buoy
396/2023	Aus237	Obstruction
753/2023	Aus237	Lights unlit
153/2024	Aus237	Light beacon damaged
281/2024	Aus237	Light beacon damaged
236/2022	Aus242	<i>Bundaberg</i> Light buoy off station
388/2022	Aus242	Shoaling
1016/2023	Aus242	Dredging operations; scientific instruments
277/2022	Aus262	<i>Cairns</i> Wreck
1052/2023	Aus262	Wreck
13/2024	Aus262	Wreck

310(T)/2024 AUSTRALIA - TEMPORARY AND PRELIMINARY NOTICES

<i>Notice</i>	<i>Charts affected</i>	<i>Locality and Subject</i>
398/2023	Aus236 815	<i>Caloundra Head</i> Light unlit
105/2020	Aus827	<i>Cape Bowling Green</i> Obstruction; light buoy
247/2021	Aus256	<i>Cape Ferguson</i> Scientific instrument
663/2023 108/2024	Aus832 Aus831 832	<i>Cape Flattery</i> Scientific instrument Scientific instrument
1053/2023	Aus831	<i>Cedar Bay</i> Wreck
249/2024	Aus256 827	<i>Cleveland Bay</i> Scientific instruments
72/2018	Aus830	<i>Fitzroy Island</i> Light buoys
738/2021 980/2021 484/2023	Aus265 Aus819 Aus265 819	<i>Fitzroy River</i> Scientific instrument Scientific instrument Scientific instrument
782/2018	Aus615	<i>Flinders Reef</i> Shoaling
741/2021	Aus817	<i>Fraser Island</i> Shoaling
64/2021 283/2024	Aus245 Aus245	<i>Gladstone</i> Harbour works Scientific instruments
490/2022 357/2023 64/2024	Aus814 Aus814 Aus814	<i>Gold Coast Seaway</i> Light buoy destroyed eastwards Wreck eastwards Fish aggregating device off station eastwards
523/2017	Aus821 824 825	<i>Great Barrier Reef</i> Shoaling
250/2024	Aus817	<i>Great Sandy Strait</i> Light buoys
613/2023 758/2023 14/2024	Aus250 Aus250 Aus250	<i>Hay Point</i> Obstruction; light buoy Mooring buoy Scientific instrument
215/2018 360/2023	Aus259 Aus259	<i>Hinchinbrook Channel</i> Wreck Light buoy off station
361/2023	Aus259 828	<i>Hinchinbrook Island</i> Light beacon destroyed
249/2021	Aus260 367 822	<i>Holt Island to Hexham Island</i> Shoaling
548/2019	Aus821 824	<i>Hydrographers Passage</i> Shoaling

310(T)/2024 AUSTRALIA - TEMPORARY AND PRELIMINARY NOTICES

<i>Notice</i>	<i>Charts affected</i>	<i>Locality and Subject</i>
66/2024 67/2024	Aus258 Aus258	<i>Johnstone River</i> Light buoy unlit Wreck
488/2019 526/2023 759/2023	Aus303 Aus6 Aus6	<i>Karumba</i> Wreck northwards Scientific instruments Shoaling
972/2023	Aus252	<i>Laguna Quays</i> Shoaling; nav aids
429/2020 614/2023	Aus250 Aus250	<i>Mackay</i> Obstruction; light buoy Obstruction; light buoy
736/2022 891/2022 893/2022 946/2022 813/2023 15/2024	Aus236 Aus236 814 815 Aus236 Aus236 Aus236 Aus236	<i>Moreton Bay</i> Mooring buoy Obstruction Light beacon unreliable Light buoy unlit Obstruction; light buoy Scientific instrument
814/2023	Aus236 814 815	<i>Moreton Island</i> Survey operations northwards
707/2023	Aus815	<i>Noosa Head</i> Scientific instrument
470/2017	Aus816	<i>North Gardner Bank</i> Foul ground
362/2023	Aus827 828	<i>Orpheus Island</i> Light buoy removed
422/2022	Aus814	<i>Palm Beach</i> Light buoy off station
332/2021	Aus839 841	<i>Poll Islet</i> Wreck
895/2022	Aus236	<i>Pumicestone Channel</i> Wreck, light buoy
111/2024	Aus301	<i>Skardon River</i> Obstruction
710/2023	Aus814	<i>Surfers Paradise</i> Light buoy off station; obstruction eastwards
1008/2020 701/2022 67/2023 68/2023	Aus256 Aus256 Aus256 Aus255 256 268 825 826 827 828 829	<i>Townsville</i> Wreck Channel widening works; nav aids Shoaling Obstructions
244/2023 816/2023	Aus256 Aus256	Mooring buoy Pump discharge
1026/2022	Aus826	<i>Upstart Bay</i> Obstructions
603/2019	Aus4	<i>Weipa</i> Scientific instruments

310(T)/2024 AUSTRALIA - TEMPORARY AND PRELIMINARY NOTICES

<i>Notice</i>	<i>Charts affected</i>	<i>Locality and Subject</i>
536/2022 764/2023	Aus262 830 Aus262	<i>Yorkeys Knob</i> Lights altered Shoaling; light buoy
SOUTH AUSTRALIA		
1026/2023	Aus348	<i>Cape Buffon</i> Light unlit
436/2017	Aus485 780	<i>Fleurieu Peninsula</i> Hulk; prohibited area
227/2024	Aus343 346 485 776 780 781	<i>Gleneelg to Lincoln Canyon</i> Survey operations
81/2021 803/2021 305/2024	Aus781 Aus130 780 781 Aus781	<i>Gulf St Vincent</i> Artificial reef Scientific instruments Scientific instruments
584/2023 168/2024	Aus780 Aus780	<i>Kangaroo Island</i> Light beacon unlit Wreck
1071/2023	Aus130 781	<i>Largs Bay to Brighton</i> Scientific instruments
723/2023	Aus777	<i>Lucky Bay</i> Dredging operations
492/2021	Aus341 342 343	<i>Masillon Island to Rocky Island</i> Islands out of position
291/2021	Aus130	<i>Port Adelaide</i> Shoaling
1027/2023	Aus136	<i>Port Bonython</i> Scientific instrument
632/2023	Aus485 781	<i>Port Giles</i> Light beacon unlit eastwards
724/2023	Aus134	<i>Port Lincoln</i> Light beacon destroyed
42/2023 36/2024 37/2024	Aus776 777 Aus136 Aus778	<i>Spencer Gulf</i> Scientific instruments Scientific instrument Light beacons unlit
909/2022	Aus120	<i>Thevenard</i> Light altered
998/2022	Aus777 778	<i>Two Hummock Point to Point Riley</i> Scientific instruments
587/2022	Aus777	<i>Wallaroo</i> Harbour works
TASMANIA		
308/2024	Aus173 795	<i>Bruny Island</i> Scientific instrument
733/2020 47/2024	Aus163 Aus163	<i>Burnie</i> Harbour works Scientific instrument northwards

310(T)/2024 AUSTRALIA - TEMPORARY AND PRELIMINARY NOTICES

<i>Notice</i>	<i>Charts affected</i>	<i>Locality and Subject</i>
522/2020	Aus173	<i>D'Entrecasteaux Channel</i> Harbour works; light buoys
263/2018	Aus164	<i>Devonport</i> Shoaling
916/2022	Aus164	Virtual AIS
83/2023	Aus164	Harbour works
375/2023	Aus164	Berth
84/2024	Aus179	<i>Franklin Sound</i> Light beacon destroyed
913/2023	Aus179 487 798 800	<i>Furneaux Group</i> Shoaling; islands out of position
730/2023	Aus173 795	<i>Huon River</i> Wreck
167/2023	Aus179	<i>King Island</i> Platform, submarine cable, prohibited area
876/2023	Aus177 792	<i>Macquarie Harbour</i> Scientific instruments
85/2024	Aus177	Lit barge
133/2024	Aus177 792	Scientific instrument
134/2024	Aus177 792	Scientific instruments
673/2021	Aus766 797	<i>Maria Island</i> Scientific instruments
1034/2023	Aus766 797	Light buoy unlit northeastwards
183/2020	Aus171 174	<i>North West Bay</i> Infrastructure
677/2021	Aus171	Mooring area
627/2016	Aus171 796	<i>Pipe Clay Head to Pitt Water</i> Scientific instruments
1017/2020	Aus796	<i>Pitt Water</i> Wreck
722/2021	Aus167	<i>Port Dalrymple</i> Harbour works
839/2023	Aus798	<i>Ringarooma Bay</i> Scientific instrument
639/2023	Aus171 173	<i>River Derwent</i> Kelp longlines; light buoys
784/2023	Aus163 164 167 487 790 798 800	<i>Rocky Cape to East Sandy Point</i> Shoaling
203/2024	Aus796 797	<i>Tasman Peninsula</i> Fish aggregating device off station eastwards
69/2024	Aus310	TIMOR SEA <i>Evans Shoal</i> Drill rig eastwards
158/2024	Aus310	Subsea operations eastwards
191/2024	Aus312	<i>Sahul Banks</i> Survey operations
221/2024	Aus312 314 315 319 321	Survey operations

310(T)/2024 AUSTRALIA - TEMPORARY AND PRELIMINARY NOTICES

<i>Notice</i>	<i>Charts affected</i>	<i>Locality and Subject</i>
115/2024	Aus315 316	<i>Van Cloon Shoal</i> Survey operations eastwards
		TORRES STRAIT
337/2021	Aus841	<i>Boigu Island</i> Shoaling
27/2022	Aus841	Shoaling
157/2024	Aus841	Light buoy off station
		<i>Cook Reef</i>
857/2023	Aus294 296 301 700 842	Scientific instruments southwards
		<i>Deliverance Island</i>
1049/2020	Aus842	Shoaling
		<i>Great North East Channel</i>
1025/2021	Aus839	Scientific instrument
		<i>Meggi-Maituine Reef</i>
292/2024	Aus839	Scientific instruments
		<i>Thursday Island</i>
976/2023	Aus293 299	Mooring buoy removed
		<i>Yorke Islands</i>
17/2024	Aus377 840	Scientific instrument
		VICTORIA
		<i>Barwon Head</i>
493/2021	Aus143	Light buoy withdrawn eastwards
		<i>Cape Conran</i>
905/2023	Aus357 487	Subsea operations southwards
		<i>Cape Duquesne</i>
630/2022	Aus140 348 349	Scientific instruments
		<i>Corner Inlet</i>
169/2024	Aus357 487 802	Scientific instruments eastwards
		<i>Geelong</i>
81/2022	Aus157	Survey
		<i>Golden Beach</i>
1028/2023	Aus357 487	Scientific instruments southeastwards
170/2024	Aus357 487	Scientific instruments southeastwards
229/2024	Aus357 487	Scientific instruments southeastwards
		<i>Ninety Mile Beach</i>
747/2022	Aus357 487	Traffic separation scheme southwestwards
112/2023	Aus357 487	Virtual AIS southeastwards
126/2024	Aus357	Scientific instrument eastwards
		<i>Phillip Island</i>
832/2023	Aus143 151 349 487 801 802	Research operations southwards
		<i>Port Campbell</i>
79/2024	Aus349 487	Subsea operations southwards
		<i>Port Fairy Bay</i>
160/2023	Aus349	Scientific instrument

310(T)/2024 AUSTRALIA - TEMPORARY AND PRELIMINARY NOTICES

<i>Notice</i>	<i>Charts affected</i>	<i>Locality and Subject</i>
		<i>Port Phillip</i>
1292/2019	Aus143 155	Light beacon unlit
42/2020	Aus155	Obstruction
350/2021	Aus153 157	Scientific instruments
409/2021	Aus157	Scientific instrument
413/2021	Aus157	Light buoys; AIS
542/2021	Aus143 155	Dredging operations
618/2021	Aus155	Obstructions
1004/2021	Aus155	Light buoy unlit
1033/2021	Aus155	Buoy
294/2022	Aus143 157	Exclusion zone
914/2022	Aus157	Artificial reef
589/2023	Aus143	Light beacon destroyed
727/2023	Aus155	Harbour works
834/2023	Aus143 155 157	Scientific instruments
907/2023	Aus143 144	Light beacon maintenance works
909/2023	Aus155	Light beacon destroyed
948/2023	Aus143	Light beacon removed
1033/2023	Aus155	Light buoy off station westwards
41/2024	Aus144	Light buoy off station
80/2024	Aus155	Light buoy off station
81/2024	Aus155	Light buoy off station
82/2024	Aus155	Light buoy damaged and unlit
128/2024	Aus143 155 157	Drilling operations
171/2024	Aus143	Harbour works
172/2024	Aus143	Harbour works
174/2024	Aus144	Light buoy off station
197/2024	Aus143	Beacon destroyed
198/2024	Aus144	Light beacon unlit
306/2024	Aus144	Light buoys unlit
		<i>Port Phillip Bay</i>
465/2023	Aus143 155	Wreck
		<i>Port Welshpool to McLoughlins Entrance</i>
895/2020	Aus181	Shoaling
		<i>Portland</i>
416/2021	Aus140	Shoaling
		<i>Portland Bay</i>
219/2020	Aus140 349	Scientific instruments
		<i>Western Port</i>
664/2021	Aus151	Shoaling
665/2021	Aus151	Light beacons unlit
859/2021	Aus151	Exclusion zone
90/2022	Aus151 801 4709	Exclusion zone
804/2022	Aus151	Jetty closed
43/2024	Aus151 801	Scientific instruments
230/2024	Aus151	Geotechnical and geophysical operations
		WESTERN AUSTRALIA
		<i>Alkimos Reef</i>
254/2024	Aus754	Geotechnical and geophysical operations
		<i>Ashburton Island</i>
647/2021	Aus64 328 743 744	Scientific instrument northwards
		<i>Barrow Island</i>
291/2019	Aus328	Well abandonment works northwestwards
942/2023	Aus65 742	Subsea operations
192/2024	Aus65 327 328 742	Subsea operations northwestwards
222/2024	Aus65 327 742	Rock installation; cable laying operations northwestwards

310(T)/2024 AUSTRALIA - TEMPORARY AND PRELIMINARY NOTICES

<i>Notice</i>	<i>Charts affected</i>	<i>Locality and Subject</i>
223/2024	Aus745 746	<i>Bateman Bay to Bills Bay</i> Scientific instruments
987/2021 535/2023	Aus37 320 729 730 Aus730	<i>Bonaparte Archipelago</i> Shoaling Obstruction
296/2024	Aus318 319 728	<i>Bougainville Peninsula</i> Rock
679/2023 820/2023 22/2024	Aus319 320 Aus319 320 4603 4722 Aus319	<i>Browse Island</i> Accommodation vessel northwestwards Light altered northwestwards Drill rig northwards
623/2022	Aus115	<i>Bunbury</i> Harbour works
287/2022	Aus328 329 744 745	<i>Bundegi Reef</i> Scientific instrument
978/2023	Aus116	<i>Cape Leeuwin</i> Historic wreck southwards
944/2023	Aus323 732 733	<i>Cape Leveque</i> Survey operations
193/2024 297/2024	Aus335 755 4060 4070 4708 4709 Aus335	<i>Cape Naturaliste</i> Light altered Scientific instrument northwestwards
116/2024 224/2024	Aus745 Aus328 329 745	<i>Cape Range</i> Scientific instruments Scientific instruments
130/2022 767/2023 1062/2023	Aus73 Aus73 Aus73	<i>Carnarvon</i> Shoaling Obstructions Light beacon unlit
896/2023	Aus319	<i>Cartier Island</i> Drill rig southwestwards
1063/2023 70/2024	Aus117 Aus117	<i>Cockburn Sound</i> Scientific instruments Light beacon destroyed
292/2023 719/2023 822/2023 162/2024	Aus57 59 327 742 Aus57 59 327 Aus57 Aus57	<i>Dampier</i> Scientific instruments Survey operations; dredging operations; pipe laying operations Scientific instrument Ship to ship transfer
455/2023 945/2023 25/2024	Aus57 327 Aus327 742 Aus327 742	<i>Dampier Archipelago</i> Wreck Mooring buoy unlit northwards Light buoy northwards
293/2023	Aus57 327	<i>Dampier Archipelago</i> Scientific instrument northwards
897/2023	Aus65 327 742	<i>Double Island</i> Platform unlit eastwards

310(T)/2024 AUSTRALIA - TEMPORARY AND PRELIMINARY NOTICES

<i>Notice</i>	<i>Charts affected</i>	<i>Locality and Subject</i>
1078/2015	Aus318 319 727 728	<i>East Holothuria Reef</i> Shoaling
255/2024	Aus319	<i>Eugene McDermott Shoal</i> Drill rig northwestwards
257/2024	Aus319 322	<i>Eugene McDermott Shoal to Scott Reef</i> Scientific instruments
258/2024	Aus329 744	<i>Exmouth Gulf</i> Scientific instrument
71/2024 118/2024	Aus329 4723 Aus4723	<i>Exmouth Plateau</i> Subsea operations Drilling operations
27/2024	Aus327 328 742 4722 4723	<i>Exmouth Plateau to Dampier</i> Pipe laying operations
401/2021 1023/2023 1065/2023 72/2024 259/2024	Aus112 117 754 Aus112 Aus112 117 Aus117 Aus112 117	<i>Fremantle</i> Dredging operations Scientific instrument Scientific instrument Scientific instruments Scientific instrument
367/2023	Aus332	<i>Gantheaume Bay</i> Scientific instrument northwestwards
1032/2022	Aus755	<i>Geographe Bay</i> Scientific instruments
770/2023	Aus81	<i>Geraldton</i> Harbour works
120/2024	Aus319	<i>Goeree Shoal</i> Mooring buoys
980/2023	Aus754	<i>Hilarys Boat Harbour</i> Light buoy damaged and unlit
260/2024	Aus332	<i>Houtman Abrolhos</i> Fish aggregating device off station
625/2023 28/2024	Aus332 Aus332	<i>Kalbarri</i> Scientific instrument Scientific instrument
981/2023	Aus732 733	<i>Karrakatta Rock</i> Historic wreck
212/2022 30/2024	Aus118 Aus118	<i>King George Sound</i> Scientific instruments Light buoy damaged
404/2021	Aus40 41	<i>Koolan Island</i> Mooring buoy
627/2023	Aus324	<i>Lagrange Bay</i> Scientific instruments
31/2024	Aus754	<i>Laurance Reef to Quinns Rocks</i> Scientific instruments

310(T)/2024 AUSTRALIA - TEMPORARY AND PRELIMINARY NOTICES

<i>Notice</i>	<i>Charts affected</i>	<i>Locality and Subject</i>
900/2023 300/2024	Aus65 742 Aus65 327 742	<i>Lowendal Islands</i> Light altered Well plug and abandonment works
982/2023	Aus325	<i>Mermaid Reef</i> Scientific instrument
164/2024	Aus754	<i>Mindarie Keys</i> Scientific instrument
121/2024	Aus328	<i>Montebello Islands</i> Scientific instrument northwestwards
226/2024 262/2024	Aus328 329 744 4723 Aus328 329	<i>Muiron Islands</i> FPSO off station northwestwards Drill rig northwestwards
1036/2022	Aus754	<i>Mullaloo</i> Scientific instruments
628/2023	Aus746	<i>Ningaloo Reef</i> Scientific instrument
33/2024	Aus745	<i>Norwegian Bay</i> Beacon obscured
75/2024	Aus64	<i>Onslow</i> Shoaling
579/2023 263/2024 303/2024	Aus53 Aus53 Aus53 326	<i>Port Hedland</i> Light beacon installation works Light beacons altered Scientific instruments
40/2023	Aus53 326 327 328 4070 4071 4603 4708 4722 4723	<i>Port Hedland to Cuvier Abyssal</i> Cable laying operations
1285/2019	Aus55 326	<i>Port Walcott</i> Tide gauge
1075/2021 538/2023	Aus64 743 Aus64	<i>Port of Ashburton</i> Scientific instrument Harbour works
111/2023	Aus118	<i>Princess Royal Harbour</i> Marine farm; light buoys
212/2020 774/2023 167/2024	Aus754 Aus112 Aus112 754	<i>Rottnest Island</i> Scientific instruments northwestwards Rock Scientific instrument northwards
1039/2022	Aus754	<i>South West Break to Staggie Reef</i> Scientific instruments
721/2023 864/2023 1069/2023 265/2024	Aus64 328 743 744 4723 Aus328 743 744 Aus64 328 743 744 Aus64 328 743	<i>Thevenard Island</i> Platform unlit southwards Scientific instrument northwestwards Oil field to be decommissioned Obstruction
1070/2023	Aus328 329 744	<i>Thevenard Island to Muiron Islands</i> Subsea operations northwestwards

310(T)/2024 AUSTRALIA - TEMPORARY AND PRELIMINARY NOTICES

<i>Notice</i>	<i>Charts affected</i>	<i>Locality and Subject</i>
630/2023	Aus118	<i>Torbay to King George Sound</i> Scientific instruments
509/2022	Aus112	<i>Trigg Island</i> Scientific instruments westwards
631/2023	Aus336	<i>Wilson Head</i> Scientific instrument
INDIAN OCEAN		
183/2022	Aus920	<i>Christmas Island</i> Mooring buoy off station
904/2023	Aus607	<i>Cocos Islands</i> Light buoy
867/2023	Aus4708 4723	<i>Roo Rise</i> Light buoy off station
PACIFIC OCEAN		
785/2022	Aus4604	Scientific instruments
PAPUA NEW GUINEA		
792/2022	Aus4604 PNG507	<i>Ava Point</i> Light unlit
826/2020	PNG506 507 623	<i>Batumata Point</i> Shoaling
789/2018	Aus4622	<i>Bismarck Sea</i> Fish aggregating devices
771/2020	PNG379 647	<i>Boera Head</i> Light unlit
278/2023	PNG516 637	<i>Boli Point</i> Light unlit
279/2023	PNG516 637	<i>Bomatu Point</i> Light unlit
327/2022	PNG509 512	<i>Bonvouloir Islands</i> Light unlit
251/2024	PNG389	<i>Bougainville Bay</i> Light unlit
974/2023	Aus399 4622 PNG397 684	<i>Buka Passage</i> Light beacon unlit
963/2020	PNG647 648	<i>Caution Bay</i> Light beacon damaged
481/2021	PNG647	Light beacon unlit
288/2024	PNG647 648	Light beacon unlit
564/2020	PNG673	<i>Dampier Strait</i> Light buoys off station
668/2020	Aus841	<i>Dauan Island</i> Light altered
829/2022	PNG509	<i>Dekatuwe (Bright) Island</i> Light beacon unlit
968/2019	Aus545 554 PNG679 680	<i>Duke of York Island</i> Shoaling

310(T)/2024 AUSTRALIA - TEMPORARY AND PRELIMINARY NOTICES

<i>Notice</i>	<i>Charts affected</i>	<i>Locality and Subject</i>
282/2023	PNG509 513	<i>Galgalohi (Gallows) Reef</i> Light unlit
346/2019 794/2022	PNG643 Aus4622 PNG386 521 522 523	<i>Huon Gulf</i> Light buoy off station Fish aggregating devices
1331/2019	Aus625 PNG508	<i>Isulailai Point</i> Light beacon unlit
830/2022	PNG508 509 628	<i>Kanaweya (Shortland) Reefs to Nuakata Passage</i> Light beacons unlit
116/2021	PNG392 393 543 666	<i>Kavieng to Neitab Island</i> Shoaling
516/2020	PNG674 677	<i>Kimbe</i> Light beacon unlit
283/2023	PNG515 516 637	<i>Kitava Island</i> Light unlit
284/2023	PNG625	<i>Kui (Mekinley) Island</i> Light unlit
286/2019	PNG646	<i>Madang Harbour</i> Shoaling
118/2021	Aus399 4604 4622 PNG397 684	<i>Madehas Island</i> Light unlit
1110/2019	PNG628	<i>Oreore Channel</i> Light buoy off station
289/2024	PNG684	<i>Queen Carola Harbour</i> Light beacon unlit
975/2023	PNG680	<i>Rabaul</i> Light unlit
290/2024	PNG379 647	<i>Redscar Head</i> Light unlit
985/2021	Aus840 841	<i>Saibai Island</i> Shoaling
670/2022	PNG519	<i>Star Reefs Passage</i> Shoaling
285/2023	PNG514	<i>Tamiaris Reef</i> Light unlit
1067/2021	Aus4604 4622 PNG545 554 680	<i>Tavui Point</i> Light unlit
831/2022	PNG543 666	<i>Wadei Island</i> Light beacon unlit
		SOLOMON ISLANDS
44/2020	SLB104	<i>Bina Harbour</i> Shoaling
91/2018	SLB102 301 302	<i>Ghizo Island</i> Shoaling

310(T)/2024 AUSTRALIA - TEMPORARY AND PRELIMINARY NOTICES

<i>Notice</i>	<i>Charts affected</i>	<i>Locality and Subject</i>
878/2023	SLB101 201	<i>Honiara</i> Wrecks
677/2017	SLB101	<i>Honiara and Lungga Roads</i> Shoaling
678/2017	SLB101 201	<i>Lungga Point</i> Light beacon unlit
987/2023	SLB101	<i>Lungga Roads</i> Shoaling
789/2023	SLB102 302	<i>Munda Point to Sosomboeke Island</i> Light beacon unreliable; light beacon unlit
842/2023	Aus4622 SLB302	<i>New Georgia Island</i> Light beacon unlit
515/2023	SLB102 301 302	<i>Nusatupe Island</i> Topmarks destroyed
406/2020	SLB102	<i>Port Noro to Kuri Point</i> Shoaling
SOUTHERN OCEAN		
80/2022	Aus600	<i>Antarctica</i> Shoaling
228/2024	Aus4074	<i>Macquarie Island</i> Scientific instrument southwestwards
TIMOR-LESTE		
987/2018	Aus901	<i>Dili</i> Light unlit

II

HYDROGRAPHIC REPORTS

NIL

To accompany Australian Notice to Mariners 268/2024

PILOT BOARDING PLACE

The outer pilot boarding place is compulsory for all vessels with a LOA of 226 metres or greater.

Note for chart Aus 198

To accompany Australian Notice to Mariners 269/2024

PORT KEMBLA VESSEL TRAFFIC SERVICE
AREA

All vessels proceeding to Port Kembla are required to call the Vessel Traffic Services (VTS) using the call sign "Port Kembla VTS" on VHF Channel 16 at least three (3) hours prior to ETA pilot boarding ground.

Note for chart Aus 808

To accompany Australian Notice to Mariners 269/2024

PORT KEMBLA VESSEL TRAFFIC SERVICE
AREA

All vessels proceeding to Port Kembla are required to call the Vessel Traffic Services (VTS) using the call sign "Port Kembla VTS" on VHF Channel 16 at least three (3) hours prior to ETA pilot boarding ground.

Note for chart Aus 195

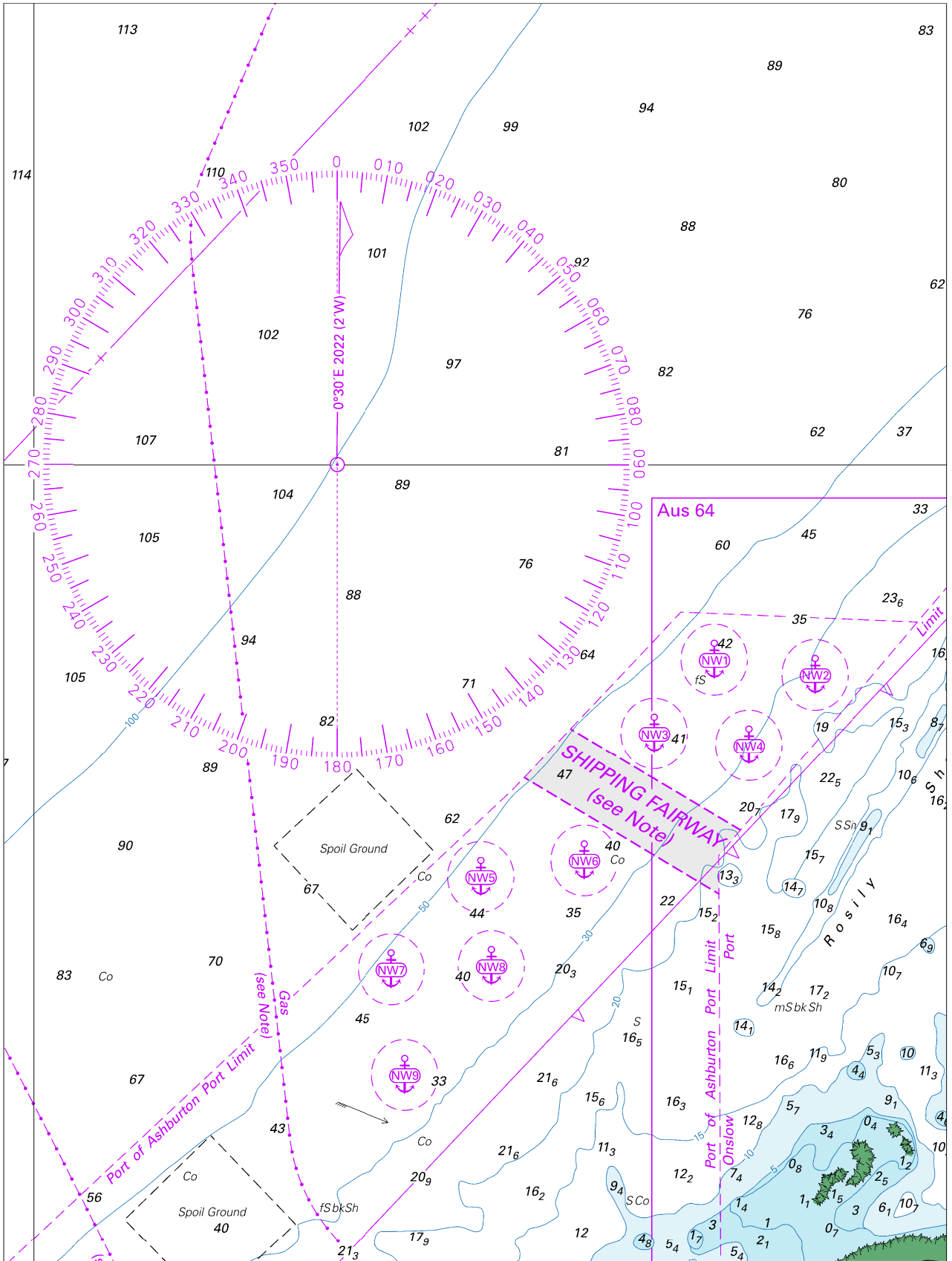
To accompany Australian Notice to Mariners 274/2024

SHIPPING FAIRWAY

Use of the Shipping Fairway is not mandatory, but strongly recommended. The International Regulations for Preventing Collisions at Sea 1972 apply to all vessels navigating within or outside the Shipping Fairway. Use of the fairway does not give vessels any special right of way.

Note for chart Aus 744

To accompany Australian Notice to Mariners 274/2024

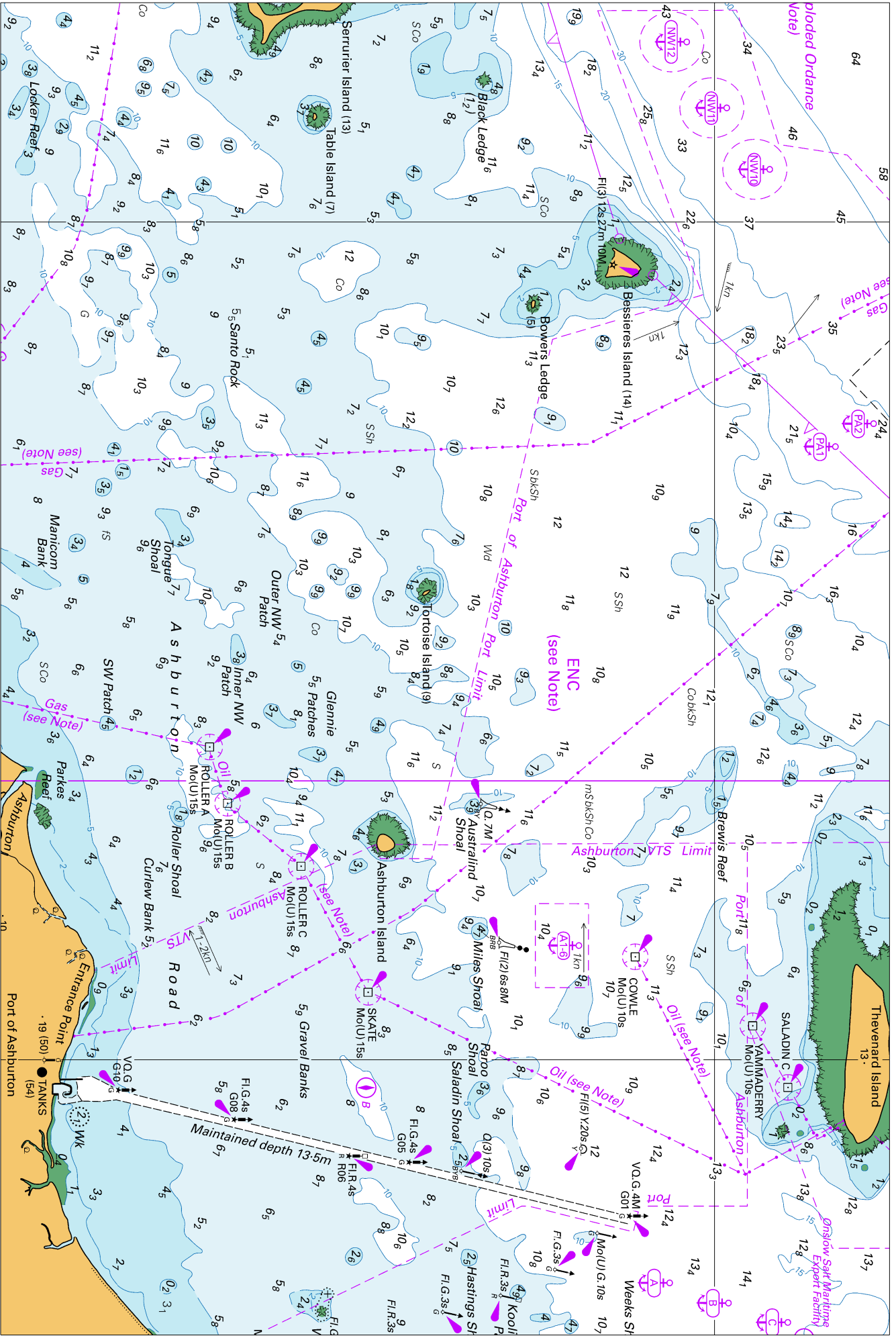


Block A for chart Aus 743

© Commonwealth of Australia 2024

(167.3 x 224.1mm)

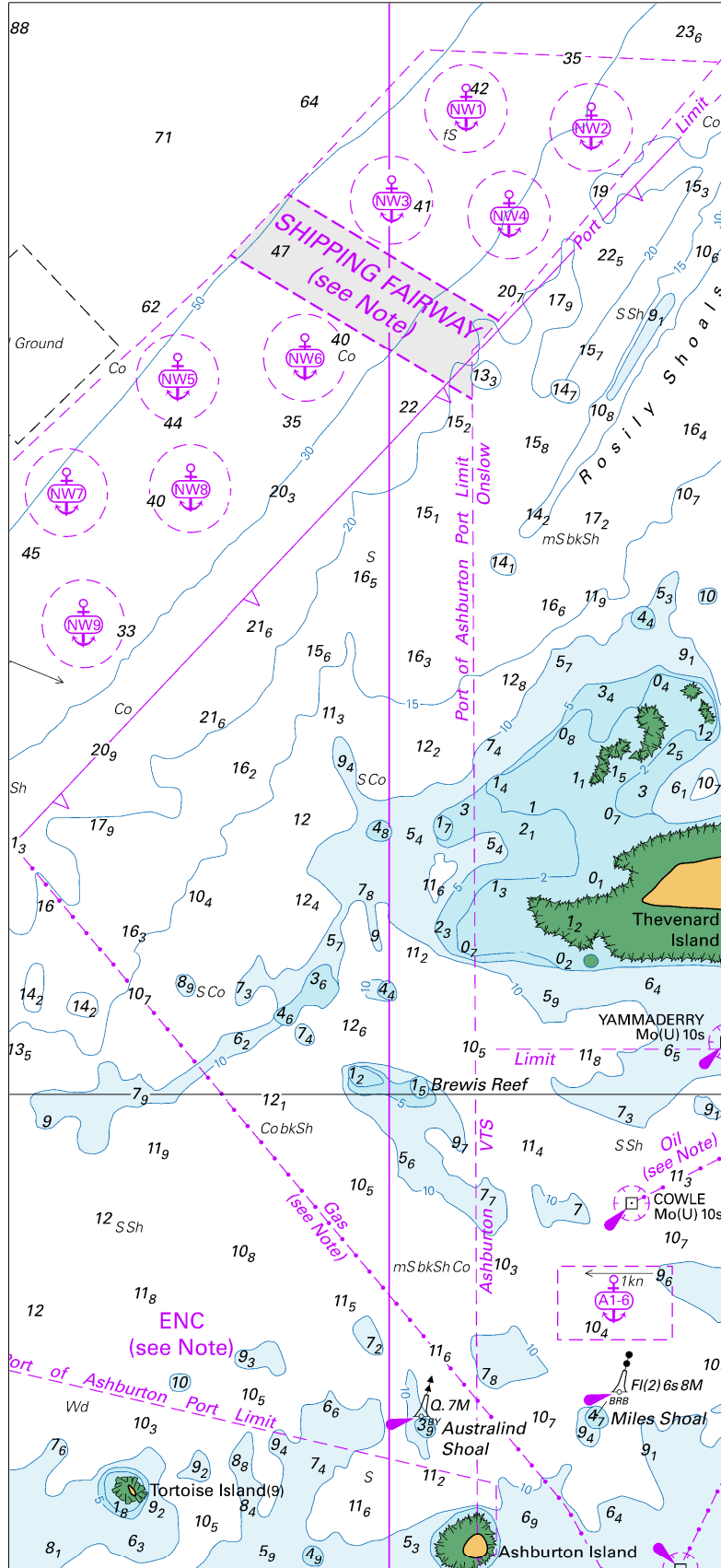
To accompany Australian Notice to Mariners 274/2024



Block B for chart Aus 743

© Commonwealth of Australia 2024

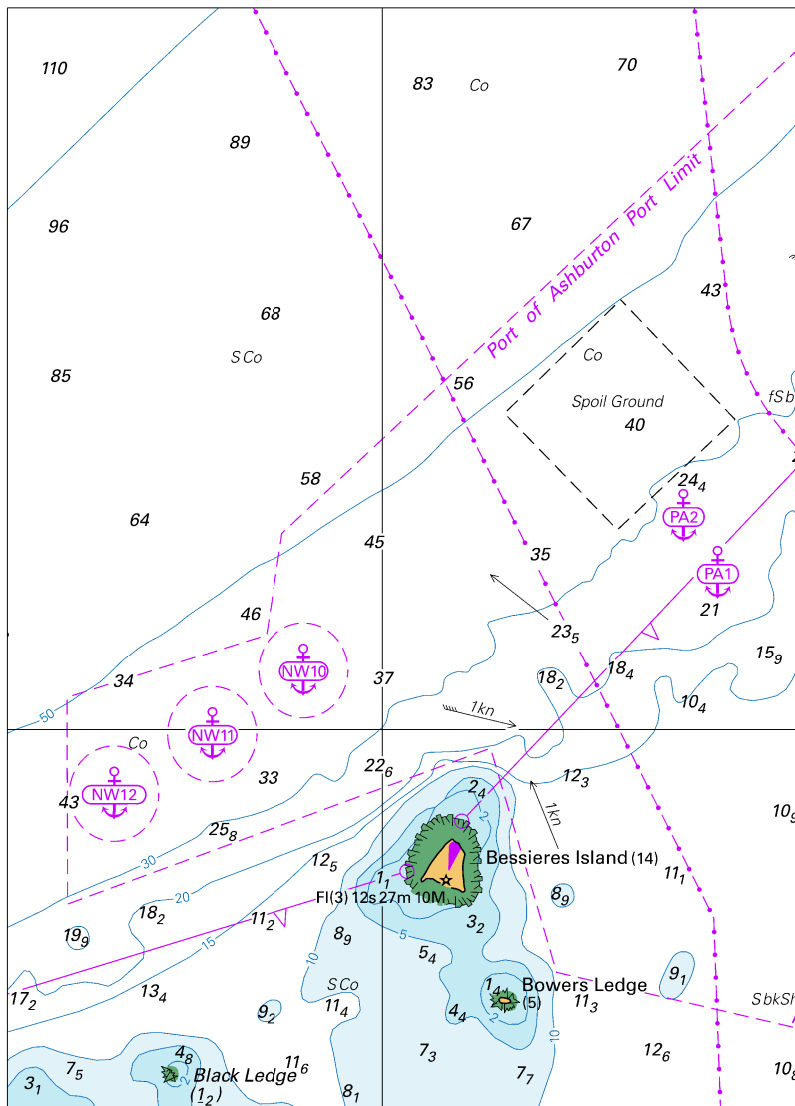
(262.5 x 174.6mm)



Block B for chart Aus 744

(102.8 x 225.2mm)

To accompany Australian Notice to Mariners 274/2024



Block A for chart Aus 744

(104.9 x 145.0mm)