



2 February 2024

Edition 3

AUSTRALIAN NOTICES TO MARINERS

Notices 86 - 135

Published fortnightly by the Australian Hydrographic Office



Australian Notices to Mariners are the authority for correcting charts and publications published by the Australian Hydrographic Office covering Australia, Papua New Guinea, Solomon Islands, Australian Antarctic Territory and Timor-Leste.

Commodore R.L. PHILLIPS RAN
Hydrographer of Australia

SECTIONS.

- I. **Australian Notices to Mariners, including blocks and notes.**
- II. **Hydrographic Reports.**

SUPPLEMENTS.

- I. **Tracings**
 - II. **Cumulative List of Australian Notices to Mariners.**
 - III. **Cumulative List of Temporary and Preliminary Australian Notices to Mariners.**
 - IV. **Temporary and Preliminary Notices in force.**
-
-

© Commonwealth of Australia 2024

This work is copyright. Apart from any use permitted under the Copyright Act 1968, no part may be reproduced by any process, adapted, communicated or commercially exploited without prior written permission from The Commonwealth represented by the Australian Hydrographic Office.

IMPORTANT NOTICE

This edition of Notices to Mariners includes all significant information affecting AHO products which the AHO has become aware of since the last edition. All reasonable efforts have been made to ensure the accuracy and completeness of the information, including third party information, on which these updates are based. The AHO regards third parties from which it receives information as reliable, however the AHO cannot verify all such information and errors may therefore exist. The AHO does not accept liability for errors in third party information.

GENERAL INSTRUCTIONS

The substance of these notices should be inserted on the charts affected.

Bearings are referred to the true compass and are reckoned clockwise from North; those relating to lights are given as seen by an observer from seaward.

Positions quoted in notices relate to WGS84 which is the horizontal datum for all charts produced by the Australian Hydrographic Office.

The range quoted for a light is its nominal range.

Depths are with reference to the chart datum of each chart. Heights are above mean high water springs or mean higher high water, as appropriate.

The capital letter (P) or (T) after the number of any notice denotes a preliminary or temporary notice respectively, which are contained separately at the end of the permanent notices.

REPORTING OF DANGERS

Mariners are particularly requested to notify the AUSTRALIAN HYDROGRAPHIC OFFICE, Locked Bag 8801 Wollongong, NSW 2500 (e-mail datacentre@hydro.gov.au or, alternatively by filling in and submitting the [Hydrographic Notes](#) forms located on the web site – www.hydro.gov.au), immediately on the discovery of new dangers or suspected dangers to navigation. For changes or defects in aids to navigation notify AusSAR (Fax 02-6230 6868 or email rccaus@amsa.gov.au).

AUTHORISED USE

Copies of Australian notices are available free of charge from the Australian Hydrographic Office (AHO) website (www.hydro.gov.au) and through the eNotices (email) service (www.hydro.gov.au/enotices/enotices.htm).

Individual Notices may be copied for the purpose of inserting Notice substance on official charts and publications. Paper copies may be printed by chart agents and distributed to customers on a cost recovery basis. Participating chart agents are listed on the AHO website as providing a 'Paper Notices to Mariners' service (www.hydro.gov.au/webapps/jsp/agents/agents-list.jsp). Copies of the notices may not be sold for profit without prior written agreement.

NUMERICAL INDEX OF NOTICES TO MARINERS

Edition No 3

Notices	Aus Chart, INT Chart, ENC Cell, AHP, BA Pubs
86	Products - New Charts, New Editions, Withdrawn Charts
87	Products - New Charts and New Editions to be published shortly
88	Aus 222, 812, 813
89	Aus 810, 811
90	Aus 818, 819, 820
91	Aus 258
92	Aus 832, 833, 834
93	Aus 817
94	Aus 250
95	Aus 814
96	Aus 301
97	Aus 252, 253, 254
98	Aus 729
99	Aus 50
100	Aus 117
101	Aus 319
102	Aus 754
103	Aus 177
104	Aus 171
105(T)	Aus 812
106(T)	Aus 806, 807
107(T)	Aus 810
108(T)	Aus 831, 832
109(T)	Aus 830
110(T)	Aus 814
111(T)	Aus 301
112(T)	Aus 256
113(T)	Aus 4
114(T)	PNG 379, 505, 647
115(T)	Aus 315, 316
116(T)	Aus 745
117(T)	Aus 57, 327, 742, 4722, 4723, INT 722, 723
118(T)	Aus 4723, INT 723
119(T)	Aus 81
120(T)	Aus 319
121(T)	Aus 328
122(T)	Aus 328, 329
123(T)	Aus 112, 117, 754, 755
124(T)	Aus 57, 327, 742
125(T)	Aus 343, 485, 780, 4709, INT 709
126(T)	Aus 357
127(T)	Aus 155
128(T)	Aus 143, 155, 157
129(T)	Aus 801
130(T)	Aus 151
131(T)	Aus 143, 349, 357, 487, 800, 801, 802
132(T)	Aus 487, 800, 802
133(T)	Aus 177, 792
134(T)	Aus 177, 792
135(T)	Aus 487, 790

NUMERICAL INDEX OF CHARTS AFFECTED

Edition No 3

Aus Chart	Notices
Aus 4	113(T)
Aus 50	99
Aus 57	117(T), 124(T)
Aus 81	119(T)
Aus 112	123(T)
Aus 117	100, 123(T)
Aus 143	128(T), 131(T)
Aus 151	130(T)
Aus 155	127(T), 128(T)
Aus 157	128(T)
Aus 171	104
Aus 177	103, 133(T), 134(T)
Aus 222	88
Aus 250	94
Aus 252	97
Aus 253	97
Aus 254	97
Aus 256	112(T)
Aus 258	91
Aus 301	96, 111(T)
Aus 315	115(T)
Aus 316	115(T)
Aus 319	101, 120(T)
Aus 327	117(T), 124(T)
Aus 328	121(T), 122(T)
Aus 329	122(T)
Aus 343	125(T)
Aus 349	131(T)
Aus 357	126(T), 131(T)
Aus 485	125(T)
Aus 487	131(T), 132(T), 135(T)
Aus 729	98
Aus 742	117(T), 124(T)
Aus 745	116(T)
Aus 754	102, 123(T)
Aus 755	123(T)
Aus 780	125(T)
Aus 790	135(T)
Aus 792	133(T), 134(T)
Aus 800	131(T), 132(T)
Aus 801	129(T), 131(T)
Aus 802	131(T), 132(T)
Aus 806	106(T)
Aus 807	106(T)
Aus 810	89, 107(T)
Aus 811	89
Aus 812	88, 105(T)
Aus 813	88
Aus 814	95, 110(T)
Aus 817	93
Aus 818	90
Aus 819	90
Aus 820	90
Aus 830	109(T)

Aus Chart	Notices
Aus 831	108(T)
Aus 832	92, 108(T)
Aus 833	92
Aus 834	92
Aus 4709	125(T)
Aus 4722	117(T)
Aus 4723	117(T), 118(T)
PNG 379	114(T)
PNG 505	114(T)
PNG 647	114(T)

INT Chart	Notices
INT 709	125(T)
INT 722	117(T)
INT 723	117(T), 118(T)

86 AUSTRALIA - Products - New Charts, New Editions, Withdrawn Charts

Australian Hydrographic Office

New Charts

<i>Chart</i>	<i>Title and Geographical limits</i>	<i>Scale</i>	<i>Publication Date</i>	<i>Remarks</i>
NIL				

New Electronic Navigation Chart (Aus ENC)

<i>Cell Name</i>	<i>Title</i>	<i>Publication Date</i>	<i>Remarks</i>
NIL			

New Editions and Withdrawn Charts

<i>Chart</i>	<i>Title</i>	<i>Scale</i>	<i>Publication Date</i>	<i>Remarks</i>
NIL				

Chart permanently withdrawn

Charts listed above as withdrawn no longer meet chart carriage requirements and should be marked as "superseded" and replaced with the new chart/ new edition listed prior to passage through the area covered by the new chart.

When placing orders with a chart agent between notice of forthcoming edition and its publication, mariners should advise whether their order pertains to the current edition or the new edition.

For further details refer to the AHO website at www.hydro.gov.au for new edition and new chart stock arrival information.

87 AUSTRALIA - Products - New Charts and New Editions to be published shortly

Australian Hydrographic Office

New Charts to be published shortly

<i>Chart</i>	<i>Title</i>	<i>Scale</i>	<i>Remarks</i>
NIL			

New Editions to be published shortly

<i>Chart</i>	<i>Title</i>	<i>Scale</i>	<i>Remarks</i>
NIL			

88 AUSTRALIA - NEW SOUTH WALES - Clarence River - Scientific instrument eastwards

Port Authority of New South Wales Notice 1/2024

Aus 222 [918/2023]

Insert	special spherical light buoy, <i>Fl(5)Y.20s & Fl.2s</i> , without topmark	29° 25'.690 S	153° 23'.925 E
--------	---	---------------	----------------

Aus 812 [846/2023]

Insert	out of position special spherical light buoy, <i>Fl(5)Y.20s & Fl.2s</i> , without topmark	29° 25'.69 S	153° 23'.93 E
--------	---	--------------	---------------

Aus 813 [846/2023]

Insert	out of position special spherical light buoy, <i>Fl(5)Y.20s & Fl.2s</i> , without topmark	29° 25'.69 S	153° 23'.93 E
--------	---	--------------	---------------

89 AUSTRALIA - NEW SOUTH WALES - Crowdy Head - Scientific instrument northeastwards

NSW Department of Planning and Environment

Aus 810 [919/2023]

Move	light buoy to	31° 48'.8 S	152° 51'.4 E
		31° 49'.02 S	152° 51'.05 E

Aus 811 [423/2023]

Move	light buoy to	31° 48'.8 S	152° 51'.4 E
		31° 49'.02 S	152° 51'.05 E

90 AUSTRALIA - QUEENSLAND - Capricorn Group - Lady Musgrave Island to Tryon Island - Mooring buoys

Maritime Safety Queensland Notice 28/2024

Aus 818 [741/2023]

Insert	blue conical mooring buoy	23° 54'.14 S	152° 23'.48 E
	blue conical mooring buoy	23° 54'.27 S	152° 24'.26 E

Delete	depth, 18m	23° 54'.2 S	152° 23'.2 E
--------	------------	-------------	--------------

Aus 819 [925/2022]

Insert	blue conical mooring buoy	23° 14'.69 S	151° 46'.46 E
	blue conical mooring buoy	23° 15'.59 S	151° 55'.64 E
	blue conical mooring buoy	23° 26'.27 S	151° 58'.78 E
	blue conical mooring buoy	23° 26'.95 S	151° 53'.83 E
	blue conical mooring buoy	23° 31'.93 S	151° 43'.32 E
	blue conical mooring buoy	23° 54'.14 S	152° 23'.48 E
	blue conical mooring buoy	23° 54'.27 S	152° 24'.26 E

Delete	depth, 18m	23° 54'.2 S	152° 23'.2 E
--------	------------	-------------	--------------

Aus 820 [925/2022]

Insert	blue conical mooring buoy	23° 14'.69 S	151° 46'.46 E
	blue conical mooring buoy	23° 15'.59 S	151° 55'.64 E

91 AUSTRALIA - QUEENSLAND - Clump Point - Wreck

Maritime Safety Queensland

Aus 258 (Dunk Island) [929/2021]

Replace	depth, 0 ₁ m, and enclosing danger circle and legend, Wk, with stranded wreck	17° 51'.2 S	146° 06'.9 E
---------	--	-------------	--------------

92 AUSTRALIA - QUEENSLAND - Great Barrier Reef - Lizard Island to Lads Passage - Depths

CSIRO

Aus 832 [343/2023]

Insert	depth, 18 ₉ m, enclosed by contour	14° 38'.66 S	145° 33'.32 E
--------	---	--------------	---------------

Aus 833 [769/2022]

Insert	depth, 20m, enclosed by contour	13° 52'.13 S	144° 13'.79 E
	depth, 22 ₂ m, and extend contour NW to enclose	13° 59'.66 S	144° 20'.14 E

Delete	depth, 25 ₅ m	13° 59'.8 S	144° 20'.4 E
--------	--------------------------	-------------	--------------

Aus 834 [771/2022]

Insert	accompanying block	13° 13'.0 S	143° 56'.0 E
--------	--------------------	-------------	--------------

93 AUSTRALIA - QUEENSLAND - Hervey Bay - Beelbi Creek - Nav aids

Maritime Safety Queensland Notice 39/2024

Aus 817 [741/2023]

Replace	beacon with starboard lateral spar buoy without topmark	25° 14'.2 S	152° 40'.3 E
	beacon with starboard lateral spar buoy without topmark	25° 14'.7 S	152° 40'.1 E

Delete	beacon	25° 13'.3 S	152° 40'.1 E
	beacon	25° 13'.6 S	152° 40'.0 E
	beacon	25° 14'.1 S	152° 40'.2 E

94 AUSTRALIA - QUEENSLAND - Mackay - Scientific instrument

Maritime Safety Queensland Notice 36/2024

Aus 250 (Mackay Harbour) [996/2023]

Move	light buoy	21° 06'.44 S	149° 14'.37 E
	to	21° 06'.754 S	149° 14'.549 E

95 AUSTRALIA - QUEENSLAND - North Stradbroke Island - Point Lookout - Wreck southeastwards

Former Notice - 452(T)/2022 is cancelled
Maritime Safety Queensland

Aus 814 [1000/2023]

Insert non-dangerous wreck, centred on 27° 29'.45 S 153° 46'.02 E

96 AUSTRALIA - QUEENSLAND - Skardon River - Anchorages

Maritime Safety Queensland Notice 604/2023

Aus 301 [959/2023]

Insert accompanying block B 11° 53'.0 S 141° 51'.0 E

Aus 301 (Skardon River) [959/2023]

Insert accompanying block A 11° 46'.13 S 141° 56'.00 E

97 AUSTRALIA - QUEENSLAND - Whitsunday Passage - Reef delineation

Maritime Safety Queensland

Aus 252 [793/2023]

Insert accompanying block 20° 17'.0 S 148° 48'.5 E

Aus 253 [794/2023]

Insert accompanying block 20° 17'.0 S 148° 48'.0 E
depth, 3m, and extend contour E to enclose 20° 22'.683 S 148° 56'.477 E

Aus 254 (Hamilton and Dent Islands) [794/2023]

Replace depth, 3₁m, with depth, 3m 20° 22'.57 S 148° 56'.57 E

98 AUSTRALIA - WESTERN AUSTRALIA - Bonaparte Archipelago - D'Arcole Islands - Depths

Department of Defence

Aus 729 [264/2023]

Insert accompanying block A 14° 50'.0 S 124° 17'.0 E
accompanying block B 14° 50'.0 S 124° 38'.0 E

99 AUSTRALIA - WESTERN AUSTRALIA - Broome - Inner Anchorage - Drying height

Department of Transport WA

Aus 50 [1007/2023]

Insert drying height, 0₄m, and extend contour SW to enclose 18° 00'.26 S 122° 13'.54 E

Delete drying height, 0₂m 18° 00'.2 S 122° 13'.6 E

100 AUSTRALIA - WESTERN AUSTRALIA - Fremantle - Parmelia Bank - Light beacons

Department of Transport WA

Aus 117 [930/2023]

Amend light beacon to F.RG.15m 11M & F.4m 3M 32° 08'.70 S 115° 42'.38 E
light beacon to F.RG.32m 11M & F.4m 3M 32° 09'.16 S 115° 42'.48 E

101 AUSTRALIA - WESTERN AUSTRALIA - Goeree Shoal - Restricted area southeastwards

NOPSEMA

Aus 319 [852/2023]

Insert restricted area with radius 0.5M, centred on 12° 57'.87 S 124° 26'.55 E

102 AUSTRALIA - WESTERN AUSTRALIA - Ocean Reef Boat Harbour - Light

Department of Transport WA

Aus 754 [56/2024]

Amend light to Ldg F.Bu.24m 5M & Q.Iso.2s 13m 10M 31° 45'.6 S 115° 43'.9 E

103 AUSTRALIA - TASMANIA - Macquarie Harbour - Rock

A Boon

Aus 177 [854/2023]

Insert depth, *0,7m*, enclosed by danger circle with legend, *R*, and legend, *Rep* (2024) 42° 22'.13 S 145° 29'.53 E

104 AUSTRALIA - TASMANIA - Pipe Clay Head - Buoy

Marine and Safety Tasmania

Aus 171 [853/2023]

Insert port lateral spar buoy without topmark 42° 57'.58 S 147° 32'.38 E

105(T)/2024 AUSTRALIA - NEW SOUTH WALES - Green Bluff - Scientific instruments eastwards
Sydney Institute of Marine Science

Subsurface scientific instruments exist as follows:

<i>Position</i>	<i>Metres below surface</i>
30° 12'.27 S 153° 16'.54 E	43
30° 12'.27 S 153° 17'.05 E	50
30° 12'.31 S 153° 15'.46 E	23
30° 12'.44 S 153° 14'.95 E	30
30° 12'.49 S 153° 14'.43 E	31
30° 12'.55 S 153° 13'.92 E	35
30° 12'.58 S 153° 13'.40 E	34
30° 12'.64 S 153° 12'.90 E	25
30° 12'.67 S 153° 10'.48 E	16
30° 12'.70 S 153° 12'.41 E	26
30° 12'.73 S 153° 11'.91 E	24
30° 12'.77 S 153° 11'.40 E	23
30° 12'.81 S 153° 10'.87 E	20.

Chart temporarily affected - Aus 812

106(T)/2024 AUSTRALIA - NEW SOUTH WALES - Montague Island - Scientific instruments
Sydney Institute of Marine Science

Subsurface scientific instruments exist as follows:

<i>Position</i>	<i>Metres below surface</i>
36° 15'.28 S 150° 14'.20 E	49
36° 15'.40 S 150° 13'.08 E	7
36° 15'.47 S 150° 12'.58 E	33
36° 15'.52 S 150° 12'.04 E	38
36° 15'.59 S 150° 11'.50 E	31
36° 15'.66 S 150° 10'.96 E	30
36° 15'.71 S 150° 10'.43 E	29
36° 15'.75 S 150° 09'.15 E	12
36° 15'.77 S 150° 09'.97 E	29.

Chart temporarily affected - Aus 806 - Aus 807

107(T)/2024 AUSTRALIA - NEW SOUTH WALES - Seal Rocks - Scientific instruments
Sydney Institute of Marine Science

Subsurface scientific instruments exist as follows:

<i>Position</i>	<i>Metres below surface</i>
32° 27'.16 S 152° 33'.47 E	35
32° 27'.16 S 152° 32'.75 E	28
32° 27'.45 S 152° 32'.94 E	26
32° 28'.45 S 152° 33'.80 E	38
32° 28'.81 S 152° 34'.11 E	42.

Chart temporarily affected - Aus 810

108(T)/2024 AUSTRALIA - QUEENSLAND - Cape Flattery - Scientific instrument
Maritime Safety Queensland Notice 34(T)/2024

A special light buoy, *Fl.Y.2-5s*, exists in position 14° 59'.43 S 145° 20'.93 E.

Chart temporarily affected - Aus 831 - Aus 832

109(T)/2024 AUSTRALIA - QUEENSLAND - Great Barrier Reef - Jenny Louise Shoal - Scientific instrument off station eastwards

Maritime Safety Queensland Notice 25(T)/2024

The special light buoy, *Fl(5)Y.20s* (16° 44'.56 S 146° 24'.54 E), is off station.

Chart temporarily affected - Aus 830

110(T)/2024 AUSTRALIA - QUEENSLAND - North Stradbroke Island - Point Lookout - Scientific instrument off station eastwards

Maritime Safety Queensland Notice 25(T)/2024

The special light buoy, *Fl(5)Y.20s* (27° 23'.50 S 153° 52'.67 E), is off station.

Chart temporarily affected - Aus 814

111(T)/2024 AUSTRALIA - QUEENSLAND - Skardon River - Obstruction

Maritime Safety Queensland Notice 40(T)/2024

A lost anchor marked by a special buoy exists in position 11° 42'.35 S 141° 51'.37 E.

Mariners are advised to navigate with caution in the area.

Chart temporarily affected - Aus 301

112(T)/2024 AUSTRALIA - QUEENSLAND - Townsville - Light beacon destroyed

Maritime Safety Queensland Notice 45(T)/2024

The port lateral light beacon, *Is.R.5s* (19° 14'.46 S 146° 49'.68 E), has been destroyed.

Mariners are advised to navigate with caution in the area.

Chart temporarily affected - Aus 256

113(T)/2024 AUSTRALIA - QUEENSLAND - Weipa - South Channel - Scientific instrument restored

Former Notice - 138(T)/2023 is cancelled

Maritime Safety Queensland Notice 25(T)/2024

Cancel this notice on receipt.

Chart formerly affected - Aus 4

114(T)/2024 PAPUA NEW GUINEA - Caution Bay - Idiha Island - Light relit

Former Notice - 1057(T)/2023 is cancelled

National Maritime Safety Authority PNG Coastal Navigation Warning 1/2024

Cancel this notice on receipt.

Chart formerly affected - PNG 379 - PNG 505 - PNG 647

115(T)/2024 AUSTRALIA - TIMOR SEA - Van Cloon Shoal - Survey operations eastwards

INPEX

On or about 12 February 2024, vessel *Offshore Surveyor* will be conducting survey operations in the vicinity of positions 12° 44'.97 S 128° 38'.06 E and 12° 47'.27 S 128° 46'.44 E.

Mariners are advised to navigate with caution in the area.

Chart temporarily affected - Aus 315 - Aus 316

116(T)/2024 AUSTRALIA - WESTERN AUSTRALIA - Cape Range - Tantabiddi - Scientific instruments

Department of Transport WA Notice 5967/2024

Scientific instruments marked by a special light buoy, *Fl.Y.3s*, exist in position 21° 54'.48 S 113° 58'.33 E.

Chart temporarily affected - Aus 745

117(T)/2024 AUSTRALIA - WESTERN AUSTRALIA - Dampier - Drill rig moved

Former Notice - 24(T)/2024 is cancelled
 MODU *Transocean Endurance*

Cancel this notice on receipt.

Chart formerly affected - Aus 57 - Aus 327 - Aus 742 - Aus 4722 (INT 722) - Aus 4723 (INT 723)

118(T)/2024 AUSTRALIA - WESTERN AUSTRALIA - Exmouth Plateau - Drilling operations

Former Notice - 1064(T)/2023 is cancelled
 Woodside Energy Ltd

Drill rig *Valaris DPS-1* and support vessels are conducting drilling operations in the following positions:

19° 53'.51 S 113° 08'.73 E
 19° 53'.81 S 113° 06'.92 E
 19° 53'.31 S 113° 10'.06 E
 19° 52'.51 S 113° 06'.69 E
 19° 52'.65 S 113° 13'.41 E
 19° 49'.46 S 113° 13'.14 E
 19° 45'.88 S 113° 14'.46 E
 19° 52'.51 S 113° 06'.69 E
 19° 53'.45 S 113° 08'.73 E.

Subsurface scientific instruments exist on the seabed in the following positions:

19° 45'.88 S 113° 14'.46 E
 19° 49'.46 S 113° 13'.14 E
 19° 52'.51 S 113° 06'.69 E
 19° 52'.65 S 113° 13'.41 E
 19° 53'.31 S 113° 10'.06 E
 19° 53'.45 S 113° 08'.73 E
 19° 53'.51 S 113° 08'.73 E
 19° 53'.81 S 113° 06'.92 E.

Mariners are advised to navigate with caution in the area.

Chart temporarily affected - Aus 4723 (INT 723)

119(T)/2024 AUSTRALIA - WESTERN AUSTRALIA - Geraldton - Champion Bay - Light buoy restored

Former Notice - 1068(T)/2023 is cancelled
 Mid West Ports Notice 2(T)/2024

Cancel this notice on receipt.

Chart formerly affected - Aus 81

120(T)/2024 AUSTRALIA - WESTERN AUSTRALIA - Goeree Shoal - Mooring buoys

Delmar Systems

12 yellow mooring buoys, *Fl.3s*, exist within 1M radius of 12° 57'.87 S 124° 26'.55 E. 2M clearance requested.

Chart temporarily affected - Aus 319

121(T)/2024 AUSTRALIA - WESTERN AUSTRALIA - Montebello Islands - Scientific instrument northwestwards

Fugro

A special light buoy, *Fl(5)Y.20s*, exists in position 20° 00'.54 S 115° 16'.83 E.

Chart temporarily affected - Aus 328

122(T)/2024 AUSTRALIA - WESTERN AUSTRALIA - Muiron Islands - Drill rig northwestwards
 MODU *Transocean Endurance*

Drill rig *Transocean Endurance* is conducting drilling operations in position 21° 22'.86 S 113° 49'.11 E.

Chart temporarily affected - Aus 328 - Aus 329

123(T)/2024 AUSTRALIA - WESTERN AUSTRALIA - Perth - Survey operations westwards

Former Notice - 76(T)/2024 is cancelled
 EGS Survey Pty Ltd

MV *Samson Explorer* is conducting survey operations, with a towed array, in an area bound by the following positions:

32° 11'.55 S 115° 11'.67 E
 32° 16'.23 S 115° 40'.26 E
 31° 48'.91 S 115° 43'.78 E
 31° 37'.86 S 114° 43'.29 E
 31° 42'.98 S 114° 42'.81 E
 31° 50'.79 S 115° 13'.94 E.

The vessel will display appropriate lights and shapes and monitor VHF Ch 16.

Mariners are advised to navigate with caution in the area.

Chart temporarily affected - Aus 112 - Aus 117 - Aus 754 - Aus 755

124(T)/2024 AUSTRALIA - WESTERN AUSTRALIA - Roly Rock - Drill rig
 MODU *Valaris 107*

Drill rig *Valaris 107* is moored in position 20° 30'.80 S 116° 28'.88 E.

Chart temporarily affected - Aus 57 - Aus 327 - Aus 742

125(T)/2024 AUSTRALIA - SOUTH AUSTRALIA - Althorpe Islands - Light restored

Former Notice - 34(T)/2024 is cancelled
 Australian Maritime Safety Authority Final ATH 1/2024

Cancel this notice on receipt.

Chart formerly affected - Aus 343 - Aus 485 - Aus 780 - Aus 4709 (INT 709)

126(T)/2024 AUSTRALIA - VICTORIA - Ninety Mile Beach - Scientific instrument eastwards

Australian Maritime Safety Authority Auscoast Warning 45/2024, Esso Australia Pty Ltd

A special light buoy, *Fl(5)Y.20s*, exists in position 38° 11'.78 S 148° 23'.65 E.

Chart temporarily affected - Aus 357

127(T)/2024 AUSTRALIA - VICTORIA - Port Phillip - Hobsons Bay - Light unlit

Parks Victoria Notice 34(T)/2024

The light, *Fl.G.10s* (37° 51'.06 S 144° 56'.99 E), is unlit.

Mariners are advised to navigate with caution in the area.

Chart temporarily affected - Aus 155

128(T)/2024 AUSTRALIA - VICTORIA - Port Phillip - Drilling operations
Ports Victoria Notice 48(T)/2024

Vessel *Fathom II* is conducting drilling operations in the following positions:

38° 08'.42 S 144° 21'.79 E
38° 02'.18 S 144° 41'.95 E
37° 56'.05 S 144° 49'.63 E
38° 07'.12 S 144° 44'.00 E
38° 05'.97 S 144° 43'.52 E
38° 00'.05 S 144° 53'.18 E
37° 52'.69 S 144° 54'.79 E
37° 52'.21 S 144° 56'.03 E.

The vessel will monitor VHF Ch12.

Mariners are advised to navigate with caution in the area with minimal wash and to keep a minimum passing distance of 50m.

Chart temporarily affected - Aus 143 - Aus 155 - Aus 157

129(T)/2024 AUSTRALIA - VICTORIA - Western Port - Cobb Bluff - Light buoy relit
Former Notice - 44(T)/2024 is cancelled
Parks Victoria Notice 26/2024

Cancel this notice on receipt.

Chart formerly affected - Aus 801

130(T)/2024 AUSTRALIA - VICTORIA - Western Port - Hastings Bight - Light beacon relit; light beacon restored
Former Notices - 45(T)/2024, 83(T)/2024 are cancelled
Parks Victoria Notices 28/2024, 29/2024

Cancel this notice on receipt.

Chart formerly affected - Aus 151

131(T)/2024 AUSTRALIA - BASS STRAIT - Survey operations
EGS Survey Pty Ltd

On or about 14 February 2024, MV *Samson Explorer* is conducting survey operations, with a towed array, in an area bound by the following positions:

39° 49'.58 S 142° 57'.37 E
38° 40'.89 S 144° 27'.27 E
39° 42'.27 S 146° 30'.47 E
39° 39'.49 S 148° 59'.09 E
39° 10'.04 S 148° 53'.17 E
39° 20'.84 S 146° 43'.38 E
38° 20'.45 S 144° 19'.71 E
39° 39'.63 S 142° 48'.16 E.

The vessel will display appropriate lights and shapes and monitor VHF Ch 16.

Mariners are advised to navigate with caution in the area.

Chart temporarily affected - Aus 143 - Aus 349 - Aus 357 - Aus 487 - Aus 800 - Aus 801 - Aus 802

132(T)/2024 AUSTRALIA - TASMANIA - Bass Strait - Survey operations completed
Former Notice - 912(T)/2023 is cancelled
Marine and Safety Tasmania Notice M42(T)/2024

Cancel this notice on receipt.

Chart formerly affected - Aus 487 - Aus 800 - Aus 802

133(T)/2024 AUSTRALIA - TASMANIA - Macquarie Harbour - Scientific instrument
Marine and Safety Tasmania Notice M36/2024

A scientific instrument, 10m below the surface, exists in position 42° 22'.79 S 145° 28'.84 E.

Chart temporarily affected - Aus 177 - Aus 792

134(T)/2024 AUSTRALIA - TASMANIA - Macquarie Harbour - Scientific instruments
Marine and Safety Tasmania Notice M37/2024

Scientific instruments marked by special buoys exist in the following positions:

42° 16'.92 S 145° 17'.62 E
42° 17'.06 S 145° 19'.03 E
42° 17'.16 S 145° 16'.00 E
42° 19'.38 S 145° 19'.27 E
42° 21'.72 S 145° 32'.22 E
42° 22'.08 S 145° 24'.46 E
42° 24'.24 S 145° 27'.62 E
42° 26'.04 S 145° 26'.91 E.

Chart temporarily affected - Aus 177 - Aus 792

135(T)/2024 AUSTRALIA - TASMANIA - Robbins Island to Rocky Cape - Scientific instruments northeastwards
Maritime and Safety Tasmania Notice M38(T)/2024

Special light buoys, *Fl. Y. 3s*, exist in the following positions:

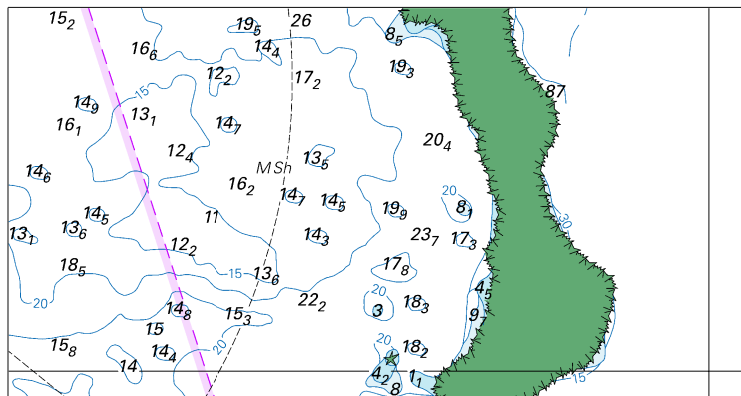
40° 33'.40 S 145° 06'.12 E
40° 33'.58 S 145° 34'.04 E
40° 38'.43 S 145° 35'.41 E.

Chart temporarily affected - Aus 487 - Aus 790

HYDROGRAPHIC REPORTS

<i>Locality</i>	<i>Report</i>	<i>Ship/Authority</i>	<i>Observer</i>
TAS- Macquarie Harbour	Rock		A Boon

To accompany Australian Notice to Mariners 92/2024

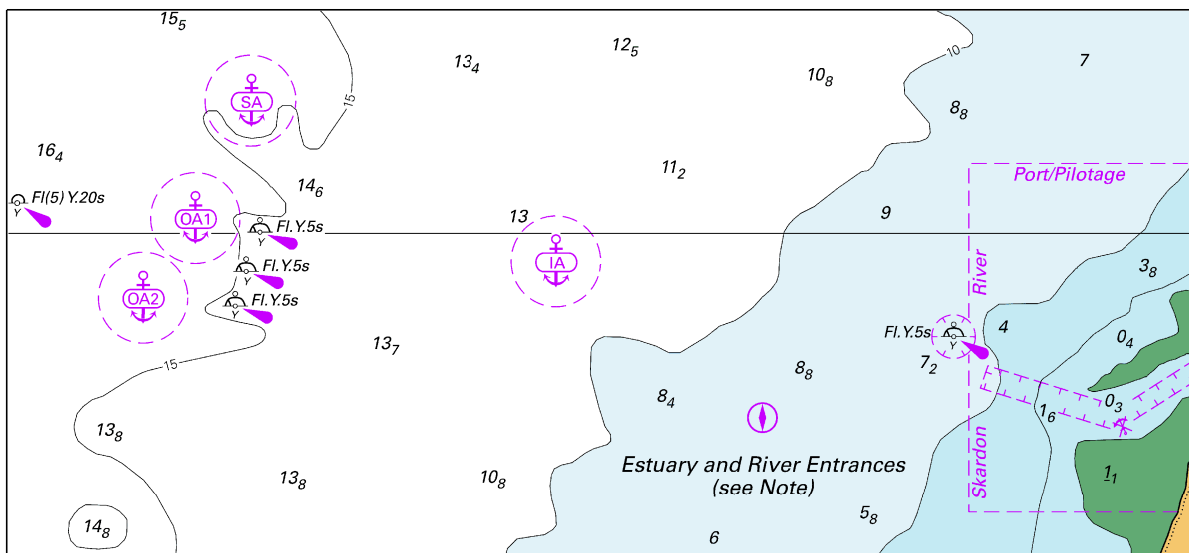


Block for chart Aus 834

(97.9 x 51.4mm)

© Commonwealth of Australia 2024

To accompany Australian Notice to Mariners 96/2024

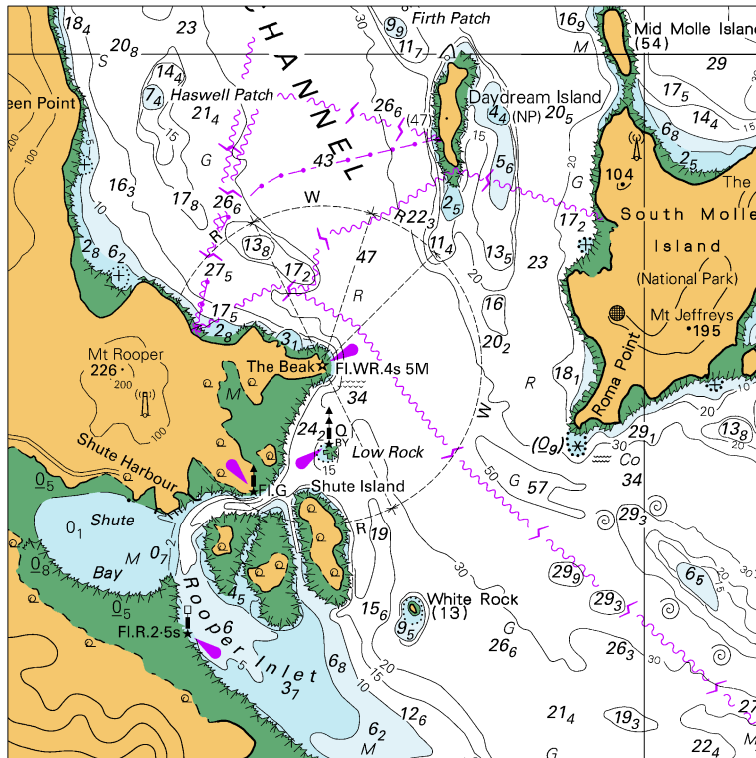


Block A for chart Aus 301

© Commonwealth of Australia 2024

(157.4 x 72.4mm)

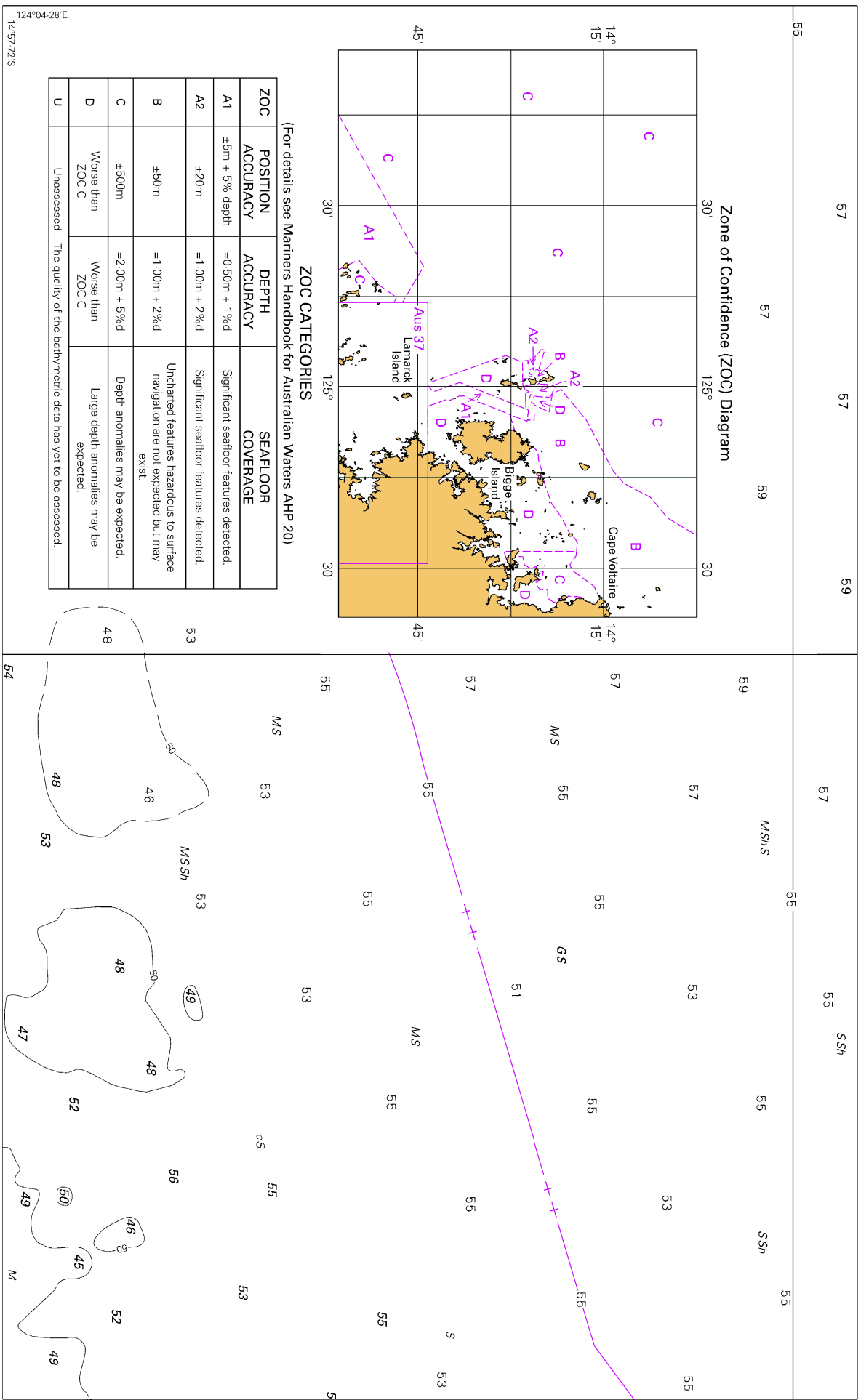
To accompany Australian Notice to Mariners 97/2024



Block for chart Aus 252

(99.1 x 99.6mm)

© Commonwealth of Australia 2024

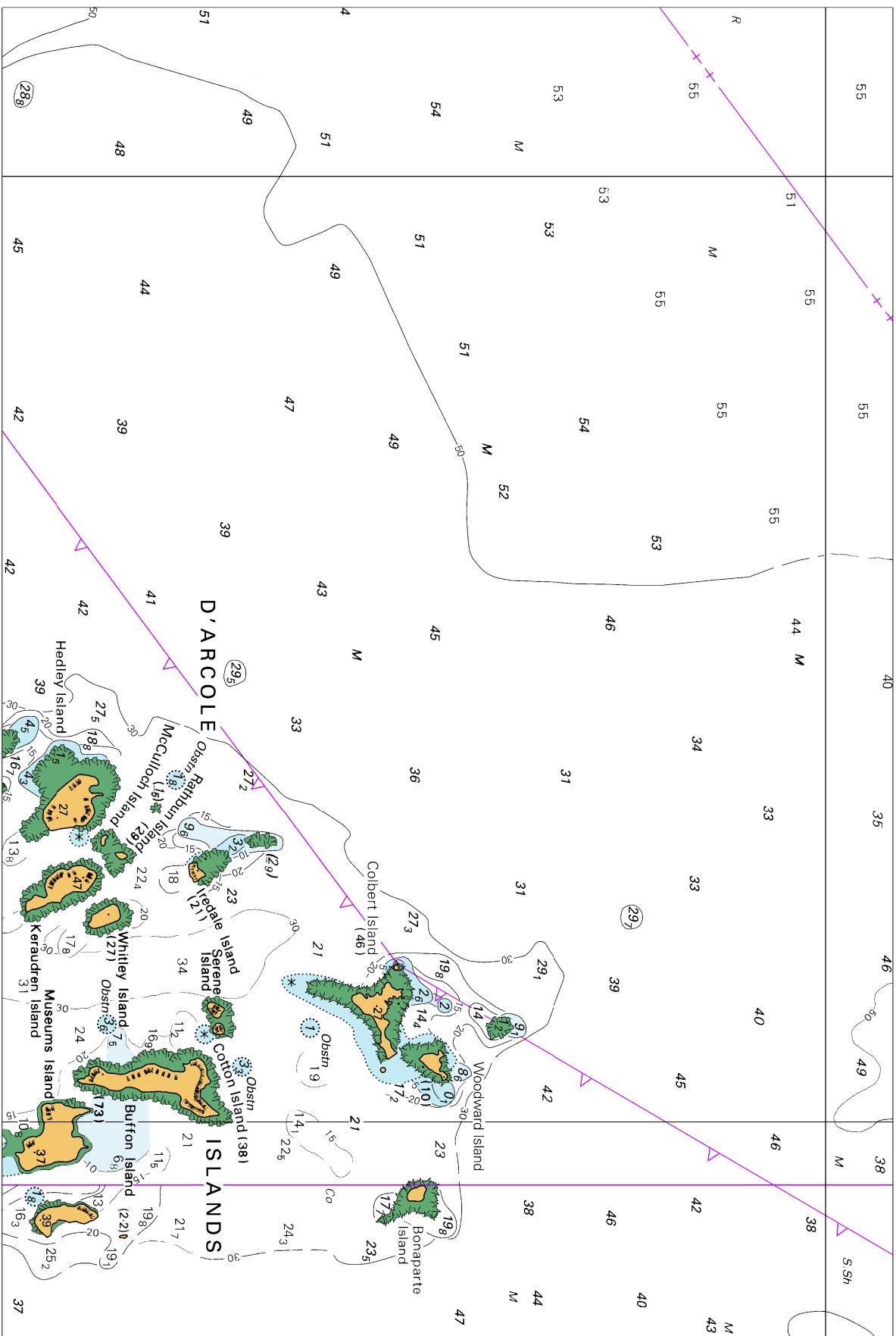


Block A for chart Aus 729

© Commonwealth of Australia 2024

(253.7 x 155.6mm)

To accompany Australian Notice to Mariners 98/2024



Block B for chart Aus 729

© Commonwealth of Australia 2024

(232.1 x 155.5mm)