



10 May 2024

Edition 10

AUSTRALIAN NOTICES TO MARINERS

Notices 346 - 387

Published fortnightly by the Australian Hydrographic Office



Australian Notices to Mariners are the authority for correcting charts and publications published by the Australian Hydrographic Office covering Australia, Papua New Guinea, Solomon Islands, Australian Antarctic Territory and Timor-Leste.

Commodore R.L. PHILLIPS RAN
Hydrographer of Australia

SECTIONS.

- I. **Australian Notices to Mariners, including blocks and notes.**
- II. **Hydrographic Reports.**

SUPPLEMENTS.

- I. **Tracings**
- II. **Cumulative List of Australian Notices to Mariners.**
- III. **Cumulative List of Temporary and Preliminary Australian Notices to Mariners.**
- IV. **Temporary and Preliminary Notices in force.**

© Commonwealth of Australia 2024

This work is copyright. Apart from any use permitted under the Copyright Act 1968, no part may be reproduced by any process, adapted, communicated or commercially exploited without prior written permission from The Commonwealth represented by the Australian Hydrographic Office.

IMPORTANT NOTICE

This edition of Notices to Mariners includes all significant information affecting AHO products which the AHO has become aware of since the last edition. All reasonable efforts have been made to ensure the accuracy and completeness of the information, including third party information, on which these updates are based. The AHO regards third parties from which it receives information as reliable, however the AHO cannot verify all such information and errors may therefore exist. The AHO does not accept liability for errors in third party information.

GENERAL INSTRUCTIONS

The substance of these notices should be inserted on the charts affected.

Bearings are referred to the true compass and are reckoned clockwise from North; those relating to lights are given as seen by an observer from seaward.

Positions quoted in notices relate to WGS84 which is the horizontal datum for all charts produced by the Australian Hydrographic Office.

The range quoted for a light is its nominal range.

Depths are with reference to the chart datum of each chart. Heights are above mean high water springs or mean higher high water, as appropriate.

The capital letter (P) or (T) after the number of any notice denotes a preliminary or temporary notice respectively, which are contained separately at the end of the permanent notices.

REPORTING OF DANGERS

Mariners are particularly requested to notify the AUSTRALIAN HYDROGRAPHIC OFFICE, Locked Bag 8801 Wollongong, NSW 2500 (e-mail datacentre@hydro.gov.au or, alternatively by filling in and submitting the [Hydrographic Notes](#) forms located on the web site – www.hydro.gov.au), immediately on the discovery of new dangers or suspected dangers to navigation. For changes or defects in aids to navigation notify AusSAR (Fax 02-6230 6868 or email rccaus@amsa.gov.au).

AUTHORISED USE

Copies of Australian notices are available free of charge from the Australian Hydrographic Office (AHO) website (www.hydro.gov.au) and through the eNotices (email) service (www.hydro.gov.au/enotices/enotices.htm).

Individual Notices may be copied for the purpose of inserting Notice substance on official charts and publications. Paper copies may be printed by chart agents and distributed to customers on a cost recovery basis. Participating chart agents are listed on the AHO website as providing a 'Paper Notices to Mariners' service (www.hydro.gov.au/webapps/jsp/agents/agents-list.jsp). Copies of the notices may not be sold for profit without prior written agreement.

NUMERICAL INDEX OF NOTICES TO MARINERS

Edition No 10

Notices	Aus Chart, INT Chart, ENC Cell, AHP, BA Pubs
346	Products - New Charts, New Editions, Withdrawn Charts
347	Aus 119, 341, 342
348	Aus 222
349	Aus 817, 818
350	PNG 545, 554
351	Aus 4060, 4603, INT 60, 603
352	Aus 324
353	Aus 73
354	Aus 57, 327, 742
355	Aus 84, 753
356	Aus 325, 326
357	Aus 155
358	SLB 101
359(T)	Aus 198, 200, 489, 808, 809
360(T)	Aus 831
361(T)	Aus 250
362(T)	Aus 249, 250, 251, 367, 821, 823, 824
363(T)	Aus 256
364(T)	Aus 4
365(T)	PNG 389
366(T)	PNG 625
367(T)	Aus 4622, INT 622, PNG 389, 651
368(T)	Aus 14
369(T)	Aus 312
370(T)	Aus 312, 314, 315, 319, 321
371(T)	Aus 73
372(T)	Aus 112, 117, 754
373(T)	Aus 327
374(T)	Aus 754
375(T)	Aus 328, 329, 743, 744, 745
376(T)	Aus 357, 487, 4601, INT 601
377(T)	Aus 155
378(T)	Aus 155
379(T)	Aus 144
380(T)	Aus 144
381(T)	Aus 155
382(T)	Aus 143, 144
383(T)	Aus 163
384(T)	Aus 163
385(T)	Aus 173
386(T)	Aus 171
387(T)	SLB 101

NUMERICAL INDEX OF CHARTS AFFECTED

Edition No 10

Aus Chart	Notices
Aus 4	364(T)
Aus 14	368(T)
Aus 57	354
Aus 73	353, 371(T)
Aus 84	355
Aus 112	372(T)
Aus 117	372(T)
Aus 119	347
Aus 143	382(T)
Aus 144	379(T), 380(T), 382(T)
Aus 155	357, 377(T), 378(T), 381(T)
Aus 163	383(T), 384(T)
Aus 171	386(T)
Aus 173	385(T)
Aus 198	359(T)
Aus 200	359(T)
Aus 222	348
Aus 249	362(T)
Aus 250	361(T), 362(T)
Aus 251	362(T)
Aus 256	363(T)
Aus 312	369(T), 370(T)
Aus 314	370(T)
Aus 315	370(T)
Aus 319	370(T)
Aus 321	370(T)
Aus 324	352
Aus 325	356
Aus 326	356
Aus 327	354, 373(T)
Aus 328	375(T)
Aus 329	375(T)
Aus 341	347
Aus 342	347
Aus 357	376(T)
Aus 367	362(T)
Aus 487	376(T)
Aus 489	359(T)
Aus 742	354
Aus 743	375(T)
Aus 744	375(T)
Aus 745	375(T)
Aus 753	355
Aus 754	372(T), 374(T)
Aus 808	359(T)
Aus 809	359(T)
Aus 817	349
Aus 818	349
Aus 821	362(T)
Aus 823	362(T)
Aus 824	362(T)
Aus 831	360(T)
Aus 4060	351
Aus 4601	376(T)

Aus Chart	Notices
Aus 4603	351
Aus 4622	367(T)
PNG 389	365(T), 367(T)
PNG 545	350
PNG 554	350
PNG 625	366(T)
PNG 651	367(T)
SLB 101	358, 387(T)

INT Chart	Notices
INT 60	351
INT 601	376(T)
INT 603	351
INT 622	367(T)

346 AUSTRALIA - Products - New Charts, New Editions, Withdrawn Charts

Australian Hydrographic Office

New Charts

Chart	Title and Geographical limits	Scale	Publication Date	Remarks
NIL				

New Electronic Navigation Chart (Aus ENC)

Cell Name	Title	Publication Date	Remarks
NIL			

New Editions and Withdrawn Charts

Chart	Title	Scale	Publication Date	Remarks
NIL				

Chart permanently withdrawn

Charts listed above as withdrawn no longer meet chart carriage requirements and should be marked as "superseded" and replaced with the new chart/ new edition listed prior to passage through the area covered by the new chart.

When placing orders with a chart agent between notice of forthcoming edition and its publication, mariners should advise whether their order pertains to the current edition or the new edition.

For further details refer to the AHO website at www.hydro.gov.au for new edition and new chart stock arrival information.

347 AUSTRALIA - Products - New Charts and New Editions to be published shortly

Australian Hydrographic Office

New Charts to be published shortly

Chart	Title	Scale	Remarks
NIL			

New Editions to be published shortly

Chart	Title	Scale	Remarks
Aus 119	Australia - South Coast - Western Australia - Approaches to Esperance Plans: Bandy Creek Boat Harbour Esperance Approaches to Goose Island Bay Duke of Orleans Bay	1:75 000 1:7 500 1:10 000 1:50 000 1:50 000	New edition with general updating throughout; including new bathymetric data.
Aus 341	Australia - South Coast - South Australia - Head of Great Australian Bight to Streaky Bay	1:300 000	New edition with general updating throughout; including coastline, boundaries and new bathymetric data.
Aus 342	Australia - South Coast - South Australia - Streaky Bay to Whidbey Isles	1:300 000	New edition with general updating throughout; including coastline, boundaries and new bathymetric data.

348 AUSTRALIA - NEW SOUTH WALES - Clarence River - Yamba - Depths

Port Authority of New South Wales

Aus 222 [88/2024]

Insert	accompanying block A	29° 25'.5 S	153° 21'.3 E
	accompanying block B	29° 25'.7 S	153° 22'.5 E

349 AUSTRALIA - QUEENSLAND - Bundaberg - Light buoy; depths
Maritime Safety Queensland

Aus 817 [93/2024]

Insert	accompanying block	24° 43'.0 S	152° 27'.5 E
--------	--------------------	-------------	--------------

Aus 818 [90/2024]

Insert	accompanying block	24° 43'.0 S	152° 26'.0 E
--------	--------------------	-------------	--------------

350 PAPUA NEW GUINEA - Duke of York Island - Depths
LADS Flight

PNG 545 [927/2022]

Insert	accompanying block	04° 11'.0 S	152° 22'.0 E
--------	--------------------	-------------	--------------

PNG 554 [927/2022]

Insert	accompanying block	04° 11'.0 S	152° 27'.0 E
--------	--------------------	-------------	--------------

351 INDONESIA - Sabuda - Depths
UKHO Notice 17/1856/2024

Aus 4060 (INT 60) [1013/2023]

Insert	depth, 225m, and extend contour SE to enclose	2° 48'.4 S	131° 04'.2 E
--------	---	------------	--------------

Aus 4603 (INT 603) [244/2024]

Insert	depth, 225m, and extend contour S to enclose	2° 48'.4 S	131° 04'.2 E
--------	--	------------	--------------

352 AUSTRALIA - WESTERN AUSTRALIA - Broome - Fish aggregating devices westwards
Department of Primary Industries and Regional Development WA

Aus 324 [55/2024]

Insert	special conical light buoy, <i>Fl. Y. 5s FAD (Apr-Nov)</i> , without topmark	17° 46'.01 S	121° 34'.63 E
	special conical light buoy, <i>Fl. Y. 5s FAD (Apr-Nov)</i> , without topmark	17° 48'.71 S	121° 39'.36 E
	special conical light buoy, <i>Fl. Y. 5s FAD (Apr-Nov)</i> , without topmark	17° 54'.37 S	121° 45'.60 E
	special conical light buoy, <i>Fl. Y. 5s FAD (Apr-Nov)</i> , without topmark	17° 56'.93 S	121° 34'.42 E

353 AUSTRALIA - WESTERN AUSTRALIA - Carnarvon - Legend
Department of Transport WA Notice 6021/2024

Aus 73 (Carnarvon) [929/2023]

Insert	legend, <i>Channel marked by buoys and beacons</i> , centred on	24° 54'.26 S	113° 38'.49 E
--------	---	--------------	---------------

354 AUSTRALIA - WESTERN AUSTRALIA - Dampier Archipelago - Fish aggregating devices westwards
Department of Primary Industries and Regional Development WA

Aus 57 [603/2023]

Insert	special conical light buoy, <i>Fl. Y. 5s FAD (Apr-Nov)</i> , without topmark	20° 24'.46 S	116° 24'.00 E
	special conical light buoy, <i>Fl. Y. 5s FAD (Apr-Nov)</i> , without topmark	20° 30'.05 S	116° 17'.64 E

Aus 327 [322/2024]

Insert	special conical light buoy, <i>Fl. Y. 5s FAD (Apr-Nov)</i> , without topmark	20° 17'.04 S	117° 07'.87 E
	special conical light buoy, <i>Fl. Y. 5s FAD (Apr-Nov)</i> , without topmark	20° 20'.49 S	116° 15'.30 E
	special conical light buoy, <i>Fl. Y. 5s FAD (Apr-Nov)</i> , without topmark	20° 24'.46 S	116° 24'.00 E
	special conical light buoy, <i>Fl. Y. 5s FAD (Apr-Nov)</i> , without topmark	20° 30'.05 S	116° 17'.64 E

Aus 742 [322/2024]

Insert	special conical light buoy, <i>Fl. Y. 5s FAD (Apr-Nov)</i> , without topmark	20° 20'.49 S	116° 15'.30 E
	special conical light buoy, <i>Fl. Y. 5s FAD (Apr-Nov)</i> , without topmark	20° 24'.46 S	116° 24'.00 E
	special conical light buoy, <i>Fl. Y. 5s FAD (Apr-Nov)</i> , without topmark	20° 30'.05 S	116° 17'.64 E

355 AUSTRALIA - WESTERN AUSTRALIA - Jurien Bay - Depths

BMT , The University of Western Australia

Aus 84 (Jurien Bay) [145/2024]

Insert	accompanying block	30° 17'.8 S	115° 02'.2 E
	special conical light buoy, <i>Fl.Y.2-5s</i> , without topmark	30° 18'.900 S	114° 55'.356 E

Aus 753 [145/2024]

Insert	accompanying block	30° 17'.0 S	114° 59'.0 E
--------	--------------------	-------------	--------------

356 AUSTRALIA - WESTERN AUSTRALIA - Port Hedland - Fish aggregating devices northwards

Recfishwest

Aus 325 [124/2023]

Insert	red cylindrical buoy, <i>FAD</i> , with diamond topmark	19° 40'.92 S	118° 47'.93 E
--------	---	--------------	---------------

Aus 326 [7/2024]

Insert	red cylindrical buoy, <i>FAD</i> , with diamond topmark	19° 40'.92 S	118° 47'.93 E
	red cylindrical buoy, <i>FAD</i> , with diamond topmark	19° 45'.28 S	118° 44'.34 E
	red cylindrical buoy, <i>FAD</i> , with diamond topmark	20° 00'.63 S	118° 15'.05 E
	red cylindrical buoy, <i>FAD</i> , with diamond topmark	20° 02'.60 S	118° 08'.58 E
	red cylindrical buoy, <i>FAD</i> , with diamond topmark	20° 04'.64 S	118° 00'.89 E

357 AUSTRALIA - VICTORIA - Port Phillip - Kororoit Creek - Buoy

Parks Victoria Notice 171/2024

Aus 155 [1012/2023]

Insert	special conical buoy with topmark	37° 51'.895 S	144° 52'.074 E
--------	-----------------------------------	---------------	----------------

358 SOLOMON ISLANDS - Honiara - Mooring buoy

Solomon Islands Maritime Authority

SLB 101 (Lungga Roads) [61/2024]

Insert	orange cylindrical mooring buoy	9° 25'.500 S	159° 58'.800 E
--------	---------------------------------	--------------	----------------

359(T)/2024 AUSTRALIA - NEW SOUTH WALES - Sydney - Survey operations southeastwards
EGS Survey Pty Ltd

On or about 20 May 2024, vessel *Bold Explorer*, with a towed array, will be conducting survey operations in an area bounded by the following positions:

34° 00'.94 S 151° 14'.62 E

34° 44'.99 S 151° 54'.31 E

34° 32'.72 S 152° 00'.44 E

33° 53'.52 S 151° 17'.51 E.

Mariners are advised to navigate with caution in the area.

Chart temporarily affected - Aus 198 - Aus 200 - Aus 489 - Aus 808 - Aus 809

360(T)/2024 AUSTRALIA - QUEENSLAND - Cedar Bay - Wreck salvaged

Former Notice - 1053(T)/2023 is cancelled

Maritime Safety Queensland

Cancel this notice on receipt.

Chart formerly affected - Aus 831

361(T)/2024 AUSTRALIA - QUEENSLAND - Hay Point - Scientific instrument recovered

Former Notice - 14(T)/2024 is cancelled

Maritime Safety Queensland

Cancel this notice on receipt.

Chart formerly affected - Aus 250

362(T)/2024 AUSTRALIA - QUEENSLAND - Hay Point to Hydrographers Passage - Survey operations complete

Former Notice - 326(T)/2024 is cancelled

Maritime Safety Queensland Notice 177(T)/2024

Cancel this notice on receipt.

Chart formerly affected - Aus 249 - Aus 250 - Aus 251 - Aus 367 - Aus 821 - Aus 823 - Aus 824

363(T)/2024 AUSTRALIA - QUEENSLAND - Townsville - Pump discharge complete

Former Notice - 816(T)/2023 is cancelled

Maritime Safety Queensland

Cancel this notice on receipt.

Chart formerly affected - Aus 256

364(T)/2024 AUSTRALIA - QUEENSLAND - Weipa - Dredging operations; survey operations

Maritime Safety Queensland Notice 216(T)/2024

On or about 12 May 2024, dredge *TSHD Brisbane* and vessel *Sounds Pacific* will be conducting dredging and survey operations in the Port of Weipa (12° 40'.70 S 141° 47'.00 E) and Amrun (12° 55'.36 S 141° 36'.53 E).

Vessels will monitor VHF Ch 12 and Ch 16.

Mariners are advised to navigate with caution in the area.

Chart temporarily affected - Aus 4

365(T)/2024 PAPUA NEW GUINEA - Bougainville Bay - Light relit*Former Notice* - 251(T)/2024 is cancelled

National Maritime Safety Authority PNG Coastal Navigation Warning 11/2024

Cancel this notice on receipt.

Chart formerly affected - PNG 389**366(T)/2024 PAPUA NEW GUINEA - Kui (Mekinley) Island - China Strait - Light relit***Former Notice* - 284(T)/2023 is cancelled

National Maritime Safety Authority PNG Coastal Navigation Warning 13/2024

Cancel this notice on receipt.

Chart formerly affected - PNG 625**367(T)/2024 PAPUA NEW GUINEA - Unei Island - Light unlit**

National Maritime Safety Authority PNG Coastal Navigation Warning 12/2024

The light, *Fl(4)16s 9m 10M* (3° 22'.69 S 143° 24'.58 E), is unlit.**Chart temporarily affected - Aus 4622 (INT 622) - PNG 389 - PNG 651****368(T)/2024 AUSTRALIA - NORTHERN TERRITORY - Groote Eylandt - Milner Bay - Wharf damaged; light unlit; light buoy unlit***Former Notice* - 330(T)/2024 is cancelled

Northern Territory Government Notice 7(T)/2024

The main wharf has been damaged. An exclusion zone exists in an area bounded by the following:

<i>Position</i>	<i>Remarks</i>
13° 51'.58 S 136° 24'.97 E	
13° 51'.55 S 136° 24'.91 E	
13° 51'.61 S 136° 24'.91 E	marked by special light buoy, <i>Fl.Y.2s</i>
13° 51'.64 S 136° 24'.93 E	marked by special light buoy, <i>Fl.Y.2s</i>
13° 51'.68 S 136° 24'.95 E	marked by special light buoy, <i>Fl.Y.2s</i>
13° 51'.72 S 136° 24'.97 E	marked by special light buoy, <i>Fl.Y.2s</i>
13° 51'.67 S 136° 24'.98 E	
13° 51'.56 S 136° 25'.04 E	
13° 51'.56 S 136° 25'.04 E.	

Only vessels belonging to South 32, NT Water Police, emergency services and those exempt by the Director, Marine Safety NT are permitted to enter the area.

The light, *F.R* (13° 51'.55 S 136° 24'.92 E), is unlit.The special light buoy, *Fl.Y.2s* (13° 51'.80 S 136° 24'.70 E), is unlit.

Mariners are advised to navigate with caution in the area.

Chart temporarily affected - Aus 14**369(T)/2024 AUSTRALIA - TIMOR SEA - Sahul Banks - FPSO unlit**

Petrofac Australia

The FPSO (10° 36'.89 S 125° 59'.13 E) is unlit.

Chart temporarily affected - Aus 312

370(T)/2024 AUSTRALIA - TIMOR SEA - Sahul Banks - Survey operations*Former Notice* - 221(T)/2024 is cancelled

SLR Consulting , Australian Maritime Safety Authority Auscoast Warning 78/2024

Survey vessel *Geo Coral*, with a 9260m towed array, and support vessels *Mariska G* and *Offshore Surveyor* are conducting survey operations in an area bounded by the following positions:

12° 34'.32 S 124° 32'.98 E

12° 35'.54 S 126° 02'.39 E

11° 28'.02 S 126° 03'.20 E

11° 22'.56 S 126° 14'.10 E

11° 06'.73 S 126° 10'.48 E

10° 48'.80 S 125° 33'.15 E

11° 47'.46 S 124° 34'.15 E.

Mariners are advised to navigate with caution in the area. 7M clearance requested.

Chart temporarily affected - Aus 312 - Aus 314 - Aus 315 - Aus 319 - Aus 321**371(T)/2024 AUSTRALIA - WESTERN AUSTRALIA - Carnarvon - Shoaling***Former Notice* - 130(T)/2022 is cancelled

Department of Transport WA Notice 6021/2024

Cancel this notice on receipt.

Chart formerly affected - Aus 73**372(T)/2024 AUSTRALIA - WESTERN AUSTRALIA - Fremantle - Dredging operations completed***Former Notice* - 401(T)/2021 is cancelled

Department of Transport WA

Cancel this notice on receipt.

Chart formerly affected - Aus 112 - Aus 117 - Aus 754**373(T)/2024 AUSTRALIA - WESTERN AUSTRALIA - Glomar Shoal - Well plug and abandonment works northwards Santos**

On or about 15 May 2024, drill rig *Ocean Apex* and support vessels will be conducting well plug and abandonment works in an area bounded by the following positions:

19° 19'.92 S 116° 30'.08 E

19° 19'.92 S 116° 50'.08 E

19° 09'.92 S 116° 50'.08 E

19° 09'.92 S 116° 30'.08 E.

A 500m exclusion zone exists around all vessels involved in the works.

Mariners are advised to navigate with caution in the area.

Chart temporarily affected - Aus 327**374(T)/2024 AUSTRALIA - WESTERN AUSTRALIA - Mindarie Keys - Scientific instrument recovered***Former Notice* - 164(T)/2024 is cancelled

Department of Transport WA

Cancel this notice on receipt.

Chart formerly affected - Aus 754

375(T)/2024 AUSTRALIA - WESTERN AUSTRALIA - Muiron Islands - Survey operations northwards
EGS Survey Pty Ltd

Vessel *Offshore Supplier*, with a towed array, and support vessels are conducting survey operations in an area bounded by the following positions:

21° 44'.08 S 114° 11'.06 E
21° 28'.88 S 114° 49'.64 E
20° 11'.20 S 115° 03'.78 E
19° 20'.15 S 114° 07'.19 E
19° 28'.41 S 113° 49'.28 E
20° 13'.44 S 114° 29'.75 E.

Vessels will display appropriate lights and shapes and monitor VHF Ch 16.

Mariners are advised to navigate with caution in the area and keep well clear.

Chart temporarily affected - Aus 328 - Aus 329 - Aus 743 - Aus 744 - Aus 745

376(T)/2024 AUSTRALIA - VICTORIA - Ninety Mile Beach - Platform unlit eastwards
Australian Maritime Safety Authority Auscoast Warning 24/2024

The *Kingfish B* platform, *Mo(U)15s* (38° 35'.82 S 148° 11'.28 E), is unlit.

Chart temporarily affected - Aus 357 - Aus 487 - Aus 4601 (INT 601)

377(T)/2024 AUSTRALIA - VICTORIA - Port Phillip - Sandringham - Light buoy off station
Parks Victoria Notice 176(T)/2024

The special light buoy, *Fl(4)Y.10s SYC6* (37° 56'.71 S 144° 57'.08 E), is off station.

Mariners are advised to navigate with caution in the area.

Chart temporarily affected - Aus 155

378(T)/2024 AUSTRALIA - VICTORIA - Port Phillip - Altona - Light buoy restored
Former Notice - 82(T)/2024 is cancelled
Parks Victoria Notice 179/2024

Cancel this notice on receipt.

Chart formerly affected - Aus 155

379(T)/2024 AUSTRALIA - VICTORIA - Port Phillip - Lonsdale Bay - Light beacon relit
Former Notice - 198(T)/2024 is cancelled
Parks Victoria Notice 196/2024

Cancel this notice on receipt.

Chart formerly affected - Aus 144

380(T)/2024 AUSTRALIA - VICTORIA - Port Phillip - Weeroona Bay - Light buoys relit
Former Notice - 306(T)/2024 is cancelled
Parks Victoria Notice 193/2024, 194/2024

Cancel this notice on receipt.

Chart formerly affected - Aus 144

381(T)/2024 AUSTRALIA - VICTORIA - Port Phillip - Sandringham - Light buoy removed
Ports Victoria Notice 199(T)/2024

The special light buoy, *Fl(4)Y.10s SYC5* (37° 58'.81 S 144° 58'.38 E), has been temporarily removed.

Chart temporarily affected - Aus 155

382(T)/2024 AUSTRALIA - VICTORIA - Port Phillip - West Channel - Light beacon maintenance works completed
Former Notice - 907(T)/2023 is cancelled
Parks Victoria Notice 54/2024

Cancel this notice on receipt.

Chart formerly affected - Aus 143 - Aus 144

383(T)/2024 AUSTRALIA - TASMANIA - Burnie - Scientific instrument northwards recovered
Former Notice - 47(T)/2024 is cancelled
Marine and Safety Tasmania Notice M174(T)/2024

Cancel this notice on receipt.

Chart formerly affected - Aus 163

384(T)/2024 AUSTRALIA - TASMANIA - Burnie - Scientific instrument northwards
Marine and Safety Tasmania Notice M180(T)/2024

A pink buoy exists in position 40° 56'.51 S 145° 56'.06 E.

Chart temporarily affected - Aus 163

385(T)/2024 AUSTRALIA - TASMANIA - Huon River - Brooks Bay - Wreck
Marine and Safety Tasmania Notice M189(T)/2024

A stranded wreck exists in position 43° 13'.90 S 147° 01'.64 E.

Mariners are advised to navigate with caution in the area.

Chart temporarily affected - Aus 173

386(T)/2024 AUSTRALIA - TASMANIA - River Derwent - Wrest Point - Light buoy relit
Former Notice - 345(T)/2024 is cancelled
Marine and Safety Tasmania Notice M170(T)/2024

Cancel this notice on receipt.

Chart formerly affected - Aus 171

387(T)/2024 SOLOMON ISLANDS - Maru Sound - Nort East Entrance - Light buoys off station
Solomon Islands Maritime Authority

The port lateral light buoy, *Fl.R.3s* (9° 46'.81 S 160° 51'.08 E), and the starboard lateral light buoy, *Fl.G.3s* (9° 46'.54 S 160° 50'.48 E), are off station.

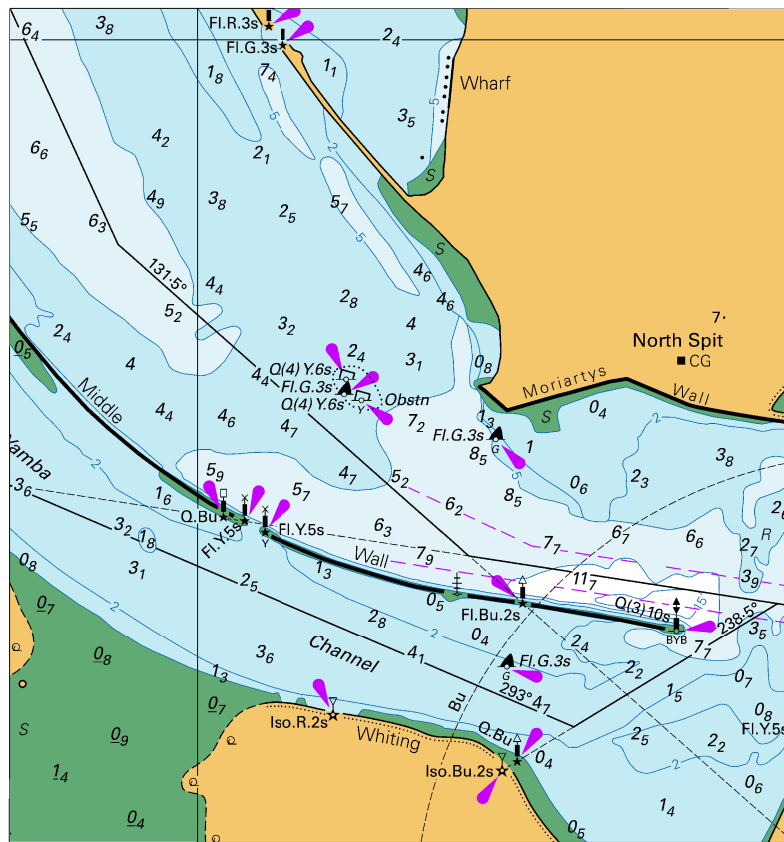
Chart temporarily affected - SLB 101

II

HYDROGRAPHIC REPORTS

NIL

To accompany Australian Notice to Mariners 348/2024

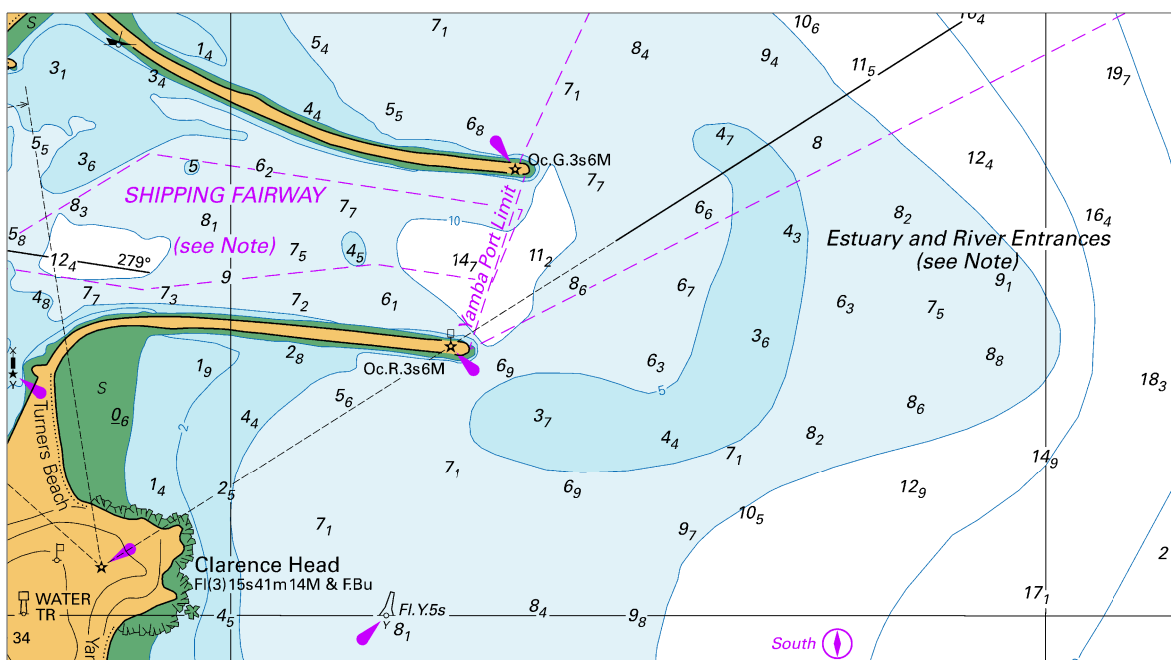


Block A for chart Aus 222

(102.9 x 110.0mm)

© Commonwealth of Australia 2024

To accompany Australian Notice to Mariners 348/2024

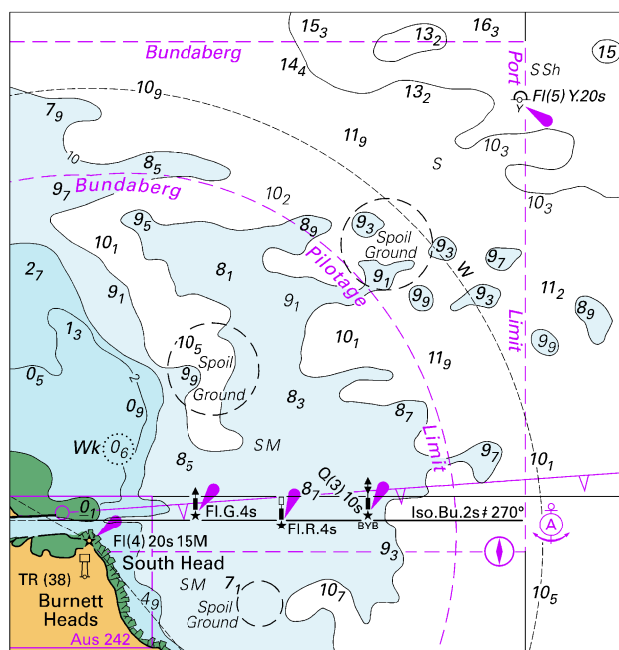


Block B for chart Aus 222

© Commonwealth of Australia 2024

(155-0 x 86-0mm)

To accompany Australian Notice to Mariners 349/2024

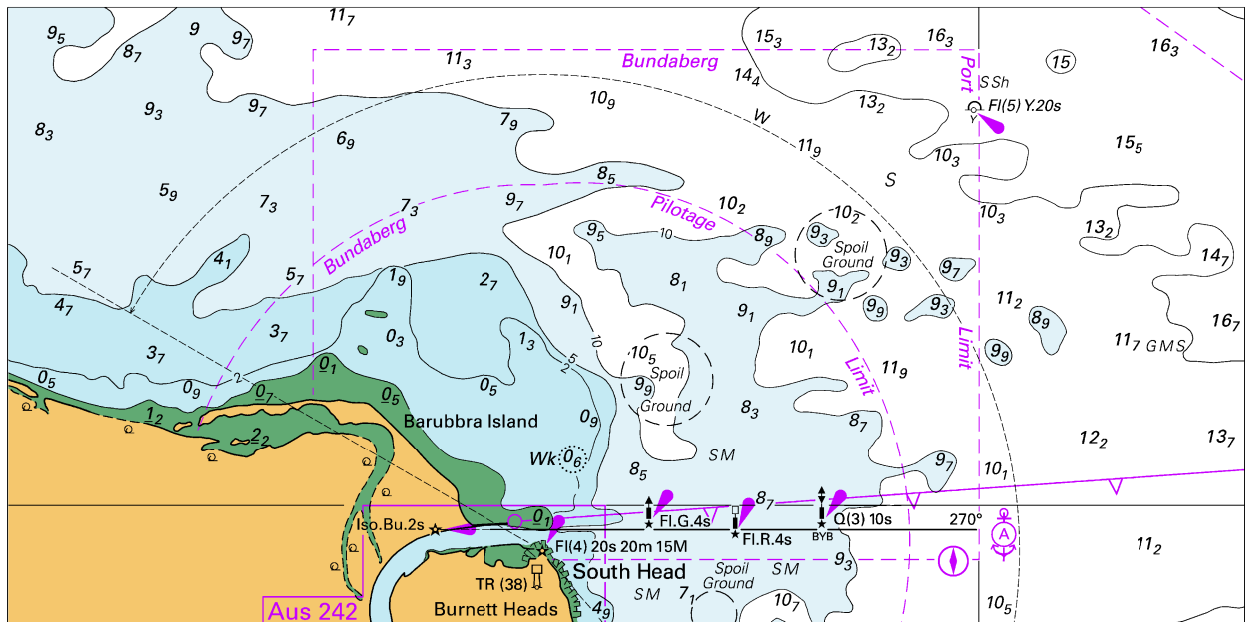


Block for chart Aus 817

(81.8 x 85.0mm)

© Commonwealth of Australia 2024

To accompany Australian Notice to Mariners 349/2024

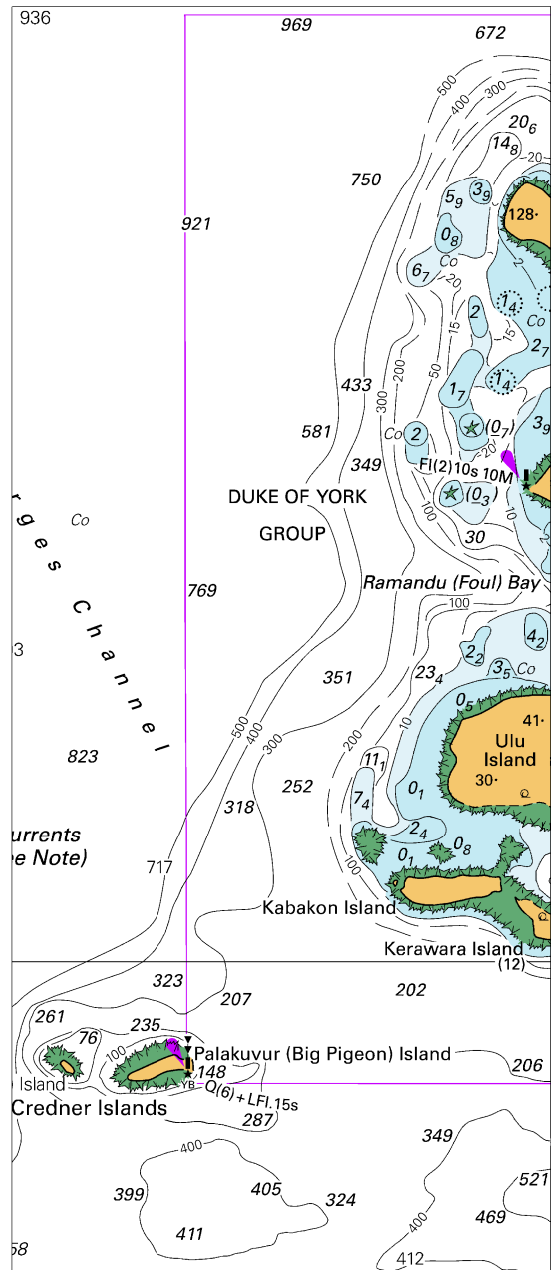


Block for chart Aus 818

© Commonwealth of Australia 2024

(163.2 x 81.6mm)

To accompany Australian Notice to Mariners 350/2024

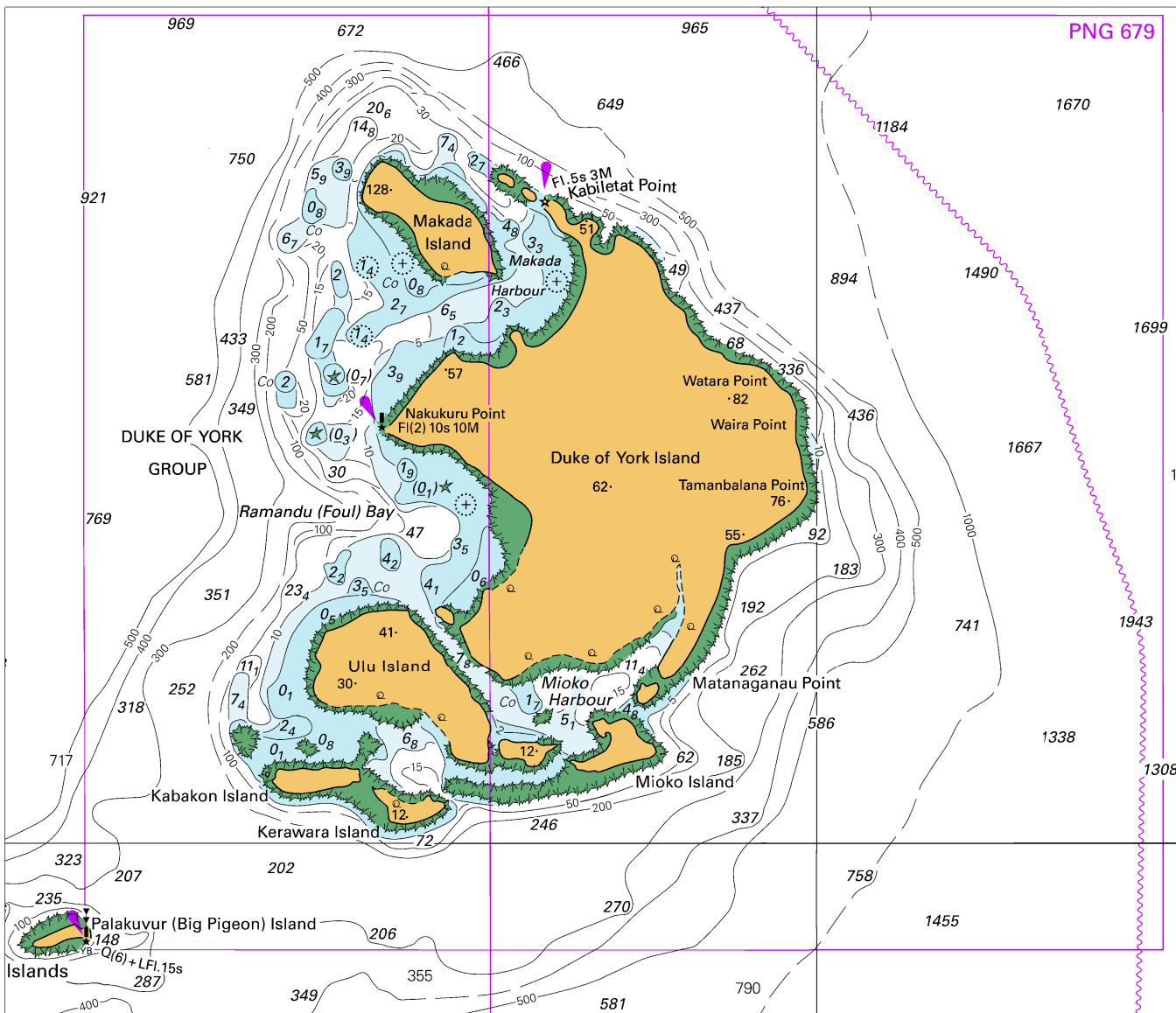


Block for chart PNG 545

(71.2 x 167.2mm)

© Commonwealth of Australia 2024

To accompany Australian Notice to Mariners 350/2024

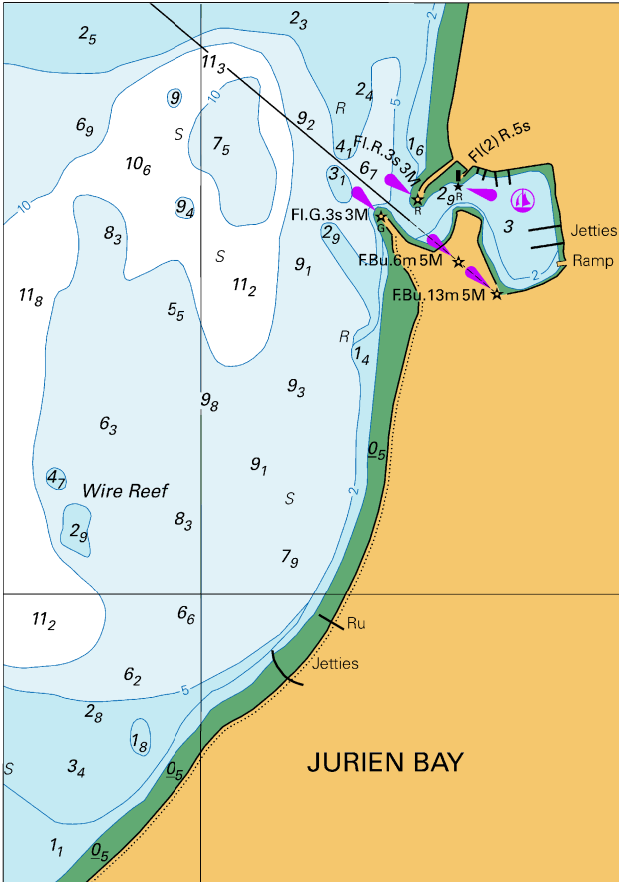


Block for chart PNG 554

© Commonwealth of Australia 2024

(177.5 x 152.4mm)

To accompany Australian Notice to Mariners 355/2024

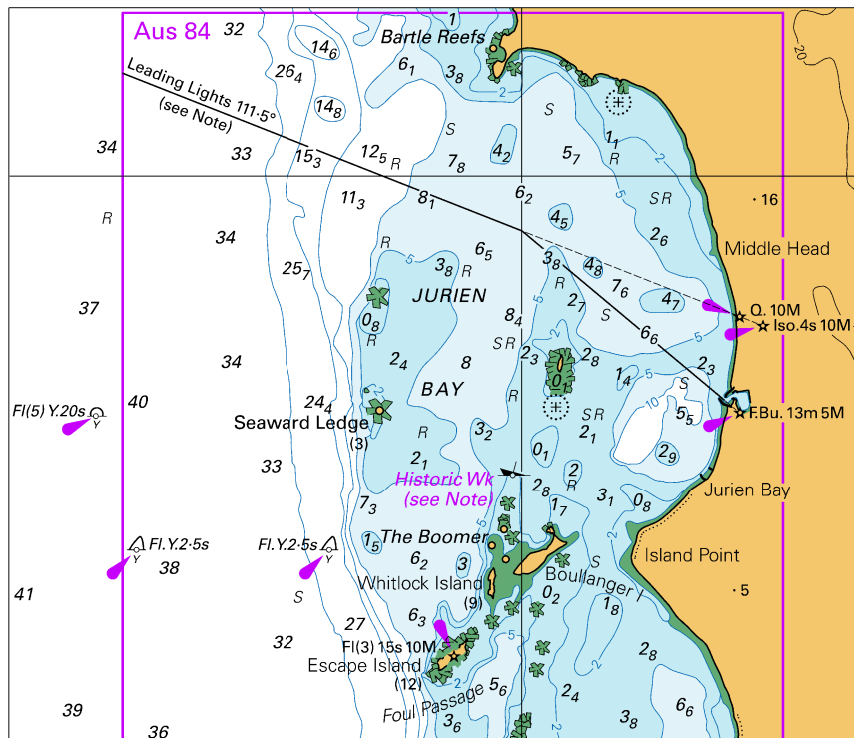


Block for chart Aus 84

(81.5 x 116.4mm)

© Commonwealth of Australia 2024

To accompany Australian Notice to Mariners 355/2024



Block for chart Aus 753 © Commonwealth of Australia 2024

(112.9 x 97.1mm)