

To accompany Australian Notice to Mariners 694/2024

SYDNEY VESSEL TRAFFIC SERVICE AREA

For entry into Sydney Harbour, vessels approaching Port Jackson are to contact Sydney Vessel Traffic Services (Call Sign Sydney VTS) on VHF channel 12, two hours prior to arrival off port limits.

For entry into Botany Bay, vessels approaching Port Botany are to contact Sydney Vessel Traffic Services (Call Sign Sydney VTS) on VHF channel 12, two hours prior to arrival off port limits.

Note for chart Aus 198

To accompany Australian Notice to Mariners 694/2024

SYDNEY VESSEL TRAFFIC SERVICE AREA

For entry into Sydney Harbour, vessels approaching Port Jackson are to contact Sydney Vessel Traffic Services (Call Sign Sydney VTS) on VHF channel 12, two hours prior to arrival off port limits.

For entry into Botany Bay, vessels approaching Port Botany are to contact Sydney Vessel Traffic Services (Call Sign Sydney VTS) on VHF channel 12, two hours prior to arrival off port limits.

Note for chart Aus 808

To accompany Australian Notice to Mariners 696/2024

UNEXPLODED ORDNANCE (UXO)

The area is safe for surface navigation only; it is not safe for anchoring, trawling or seabed activities. For details see Mariners Handbook for Australian Waters AHP 20.

Note for chart Aus 256

To accompany Australian Notice to Mariners 697/2024

UNEXPLODED ORDNANCE (UXO)

The area is safe for surface navigation only; it is not safe for anchoring, trawling or seabed activities. For details see Mariners Handbook for Australian Waters AHP 20.

Note for chart Aus 822

To accompany Australian Notice to Mariners 703/2024

**PARTICULARLY SENSITIVE SEA AREA
(PSSA)**

The area shown is an IMO approved Particularly Sensitive Sea Area (PSSA). For details see Mariners Handbook for Australian Waters AHP 20.

Note for chart Aus 4603

To accompany Australian Notice to Mariners 694/2024

SYDNEY VESSEL TRAFFIC SERVICE AREA

For entry into Sydney Harbour, vessels approaching Port Jackson are to contact Sydney Vessel Traffic Services (Call Sign Sydney VTS) on VHF channel 12, two hours prior to arrival off port limits.

For entry into Botany Bay, vessels approaching Port Botany are to contact Sydney Vessel Traffic Services (Call Sign Sydney VTS) on VHF channel 12, two hours prior to arrival off port limits.

Note for chart Aus 200

To accompany Australian Notice to Mariners 694/2024

SYDNEY VESSEL TRAFFIC SERVICE AREA

For entry into Sydney Harbour, vessels approaching Port Jackson are to contact Sydney Vessel Traffic Services (Call Sign Sydney VTS) on VHF channel 12, two hours prior to arrival off port limits.

For entry into Botany Bay, vessels approaching Port Botany are to contact Sydney Vessel Traffic Services (Call Sign Sydney VTS) on VHF channel 12, two hours prior to arrival off port limits.

Note for chart Aus 809

To accompany Australian Notice to Mariners 697/2024

UNEXPLODED ORDNANCE (UXO)

The area is safe for surface navigation only; it is not safe for anchoring, trawling or seabed activities. For details see Mariners Handbook for Australian Waters AHP 20.

Note for chart Aus 260

To accompany Australian Notice to Mariners 703/2024

**PARTICULARLY SENSITIVE SEA AREA
(PSSA)**

The area shown is an IMO approved Particularly Sensitive Sea Area (PSSA). For details see Mariners Handbook for Australian Waters AHP 20.

Note for chart Aus 4602

To accompany Australian Notice to Mariners 703/2024

AREA TO BE AVOIDED

Transiting ships should not enter the IMO-adopted Area to be avoided. Ships may enter and visit a location within the Area to be avoided if there is an operational requirement to do so.

Note for chart Aus 4603

To accompany Australian Notice to Mariners 703/2024

PARTICULARLY SENSITIVE SEA AREA
(PSSA)

The area shown is an IMO approved Particularly Sensitive Sea Area (PSSA). For details see Mariners Handbook for Australian Waters AHP 20.

Note for chart Aus 4604

To accompany Australian Notice to Mariners 703/2024

ENVIRONMENTALLY SENSITIVE SEA AREA
(ESSA)

Areas of this chart are Environmentally Sensitive Sea Areas (ESSA). Areas within this marine protected area have restrictions on access and activities. For details see Mariners Handbook for Australian Waters AHP 20.

Note for chart Aus 4722

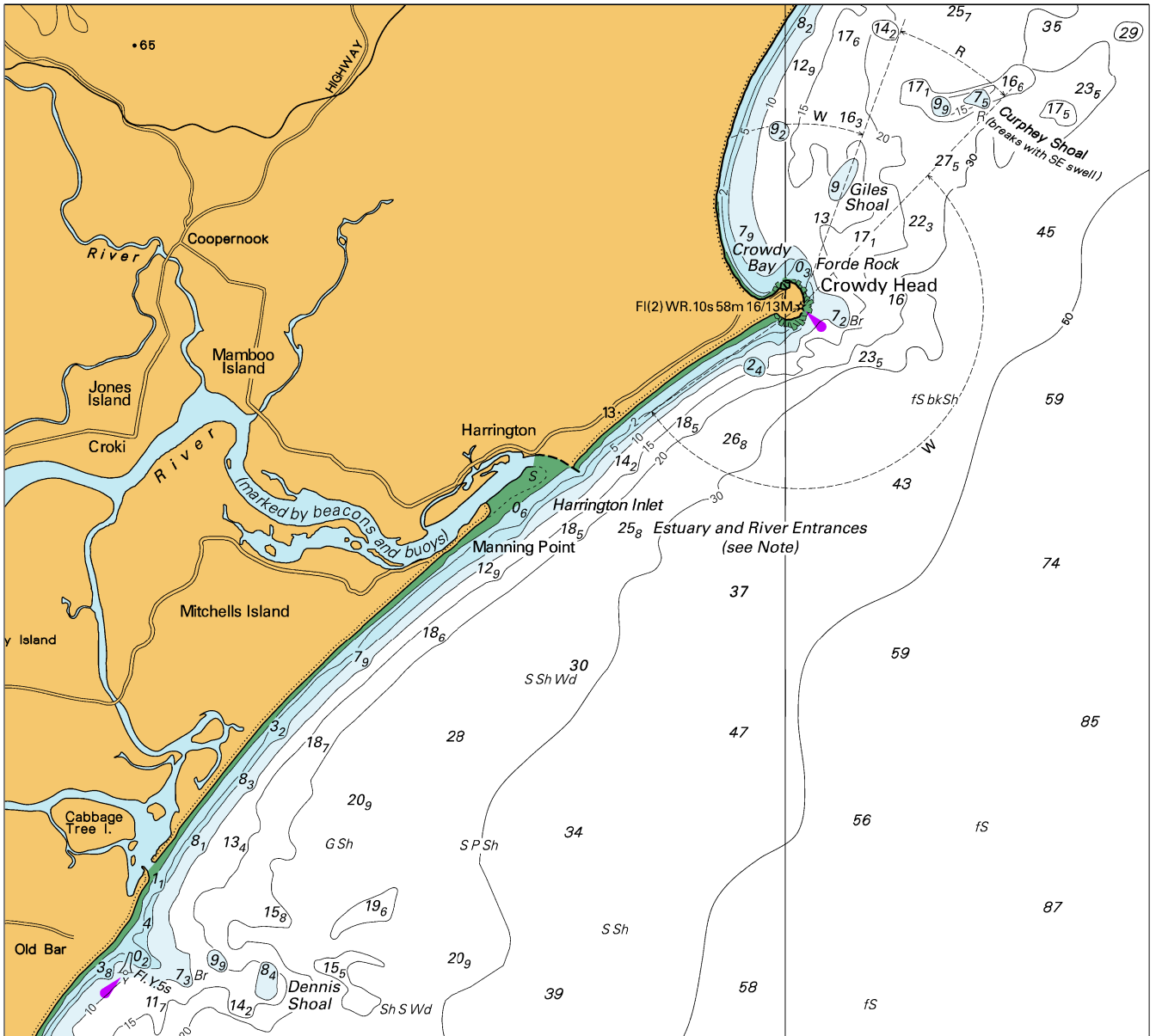
To accompany Australian Notice to Mariners 703/2024

CABLES

Only transoceanic cables are shown on this chart.

Note for chart Aus 4722

To accompany Australian Notice to Mariners 691/2024

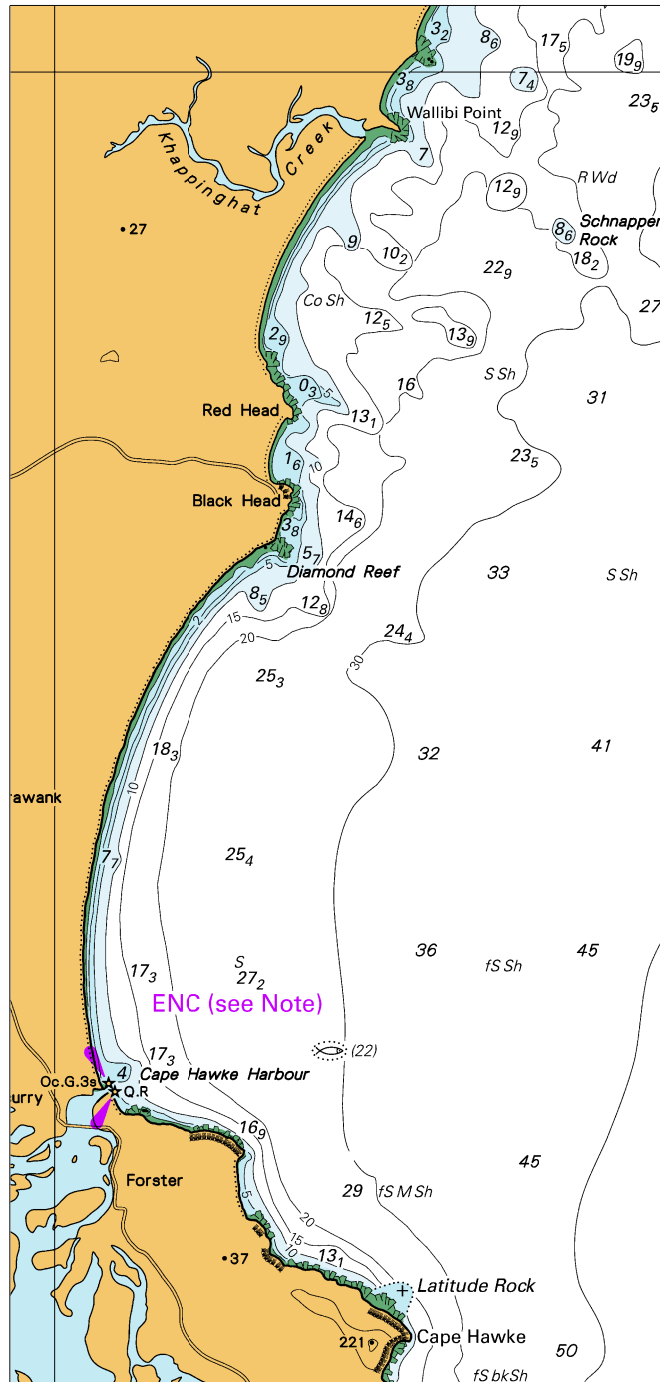


Block A for chart Aus 810

© Commonwealth of Australia 2024

(176.0 x 159.1mm)

To accompany Australian Notice to Mariners 691/2024

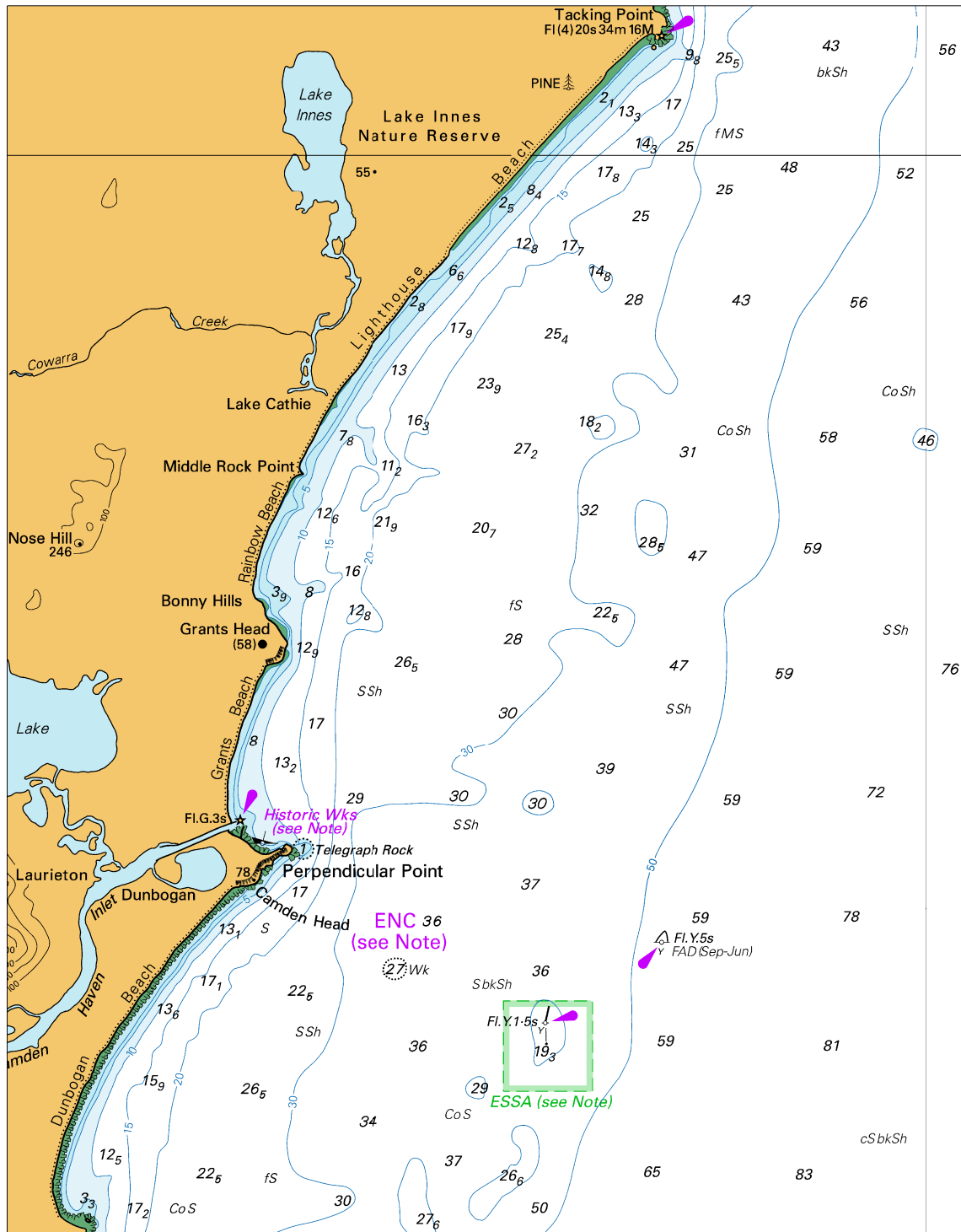


Block B for chart Aus 810

(86.6 x 182.5mm)

© Commonwealth of Australia 2024

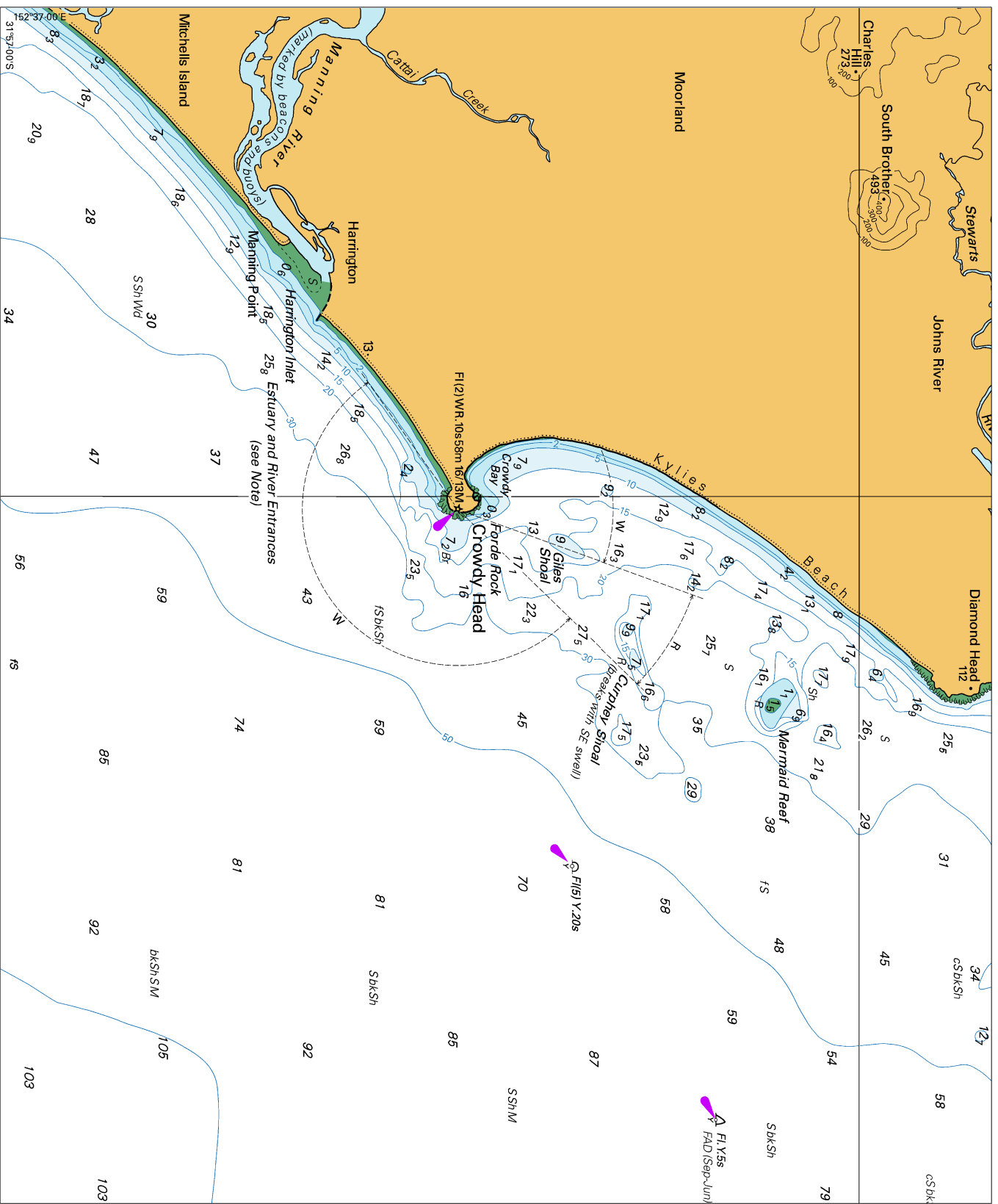
To accompany Australian Notice to Mariners 691/2024



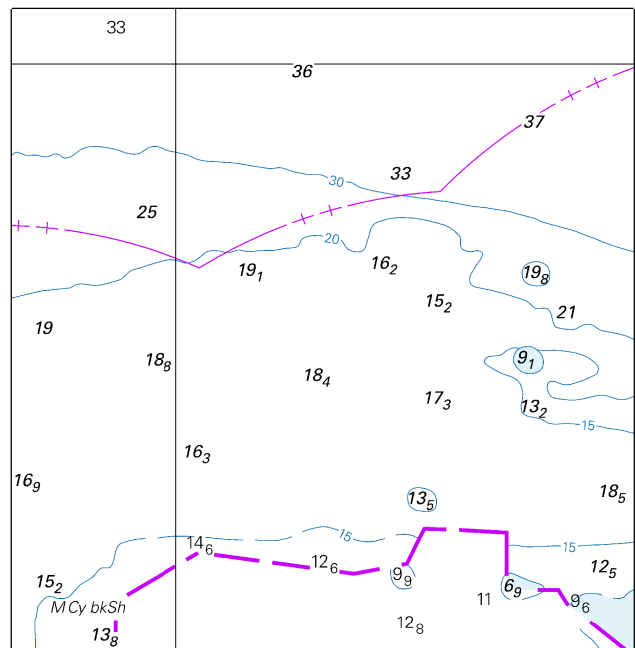
Block A for chart Aus 811

© Commonwealth of Australia 2024

(149.8 x 192.7mm)



To accompany Australian Notice to Mariners 701/2024

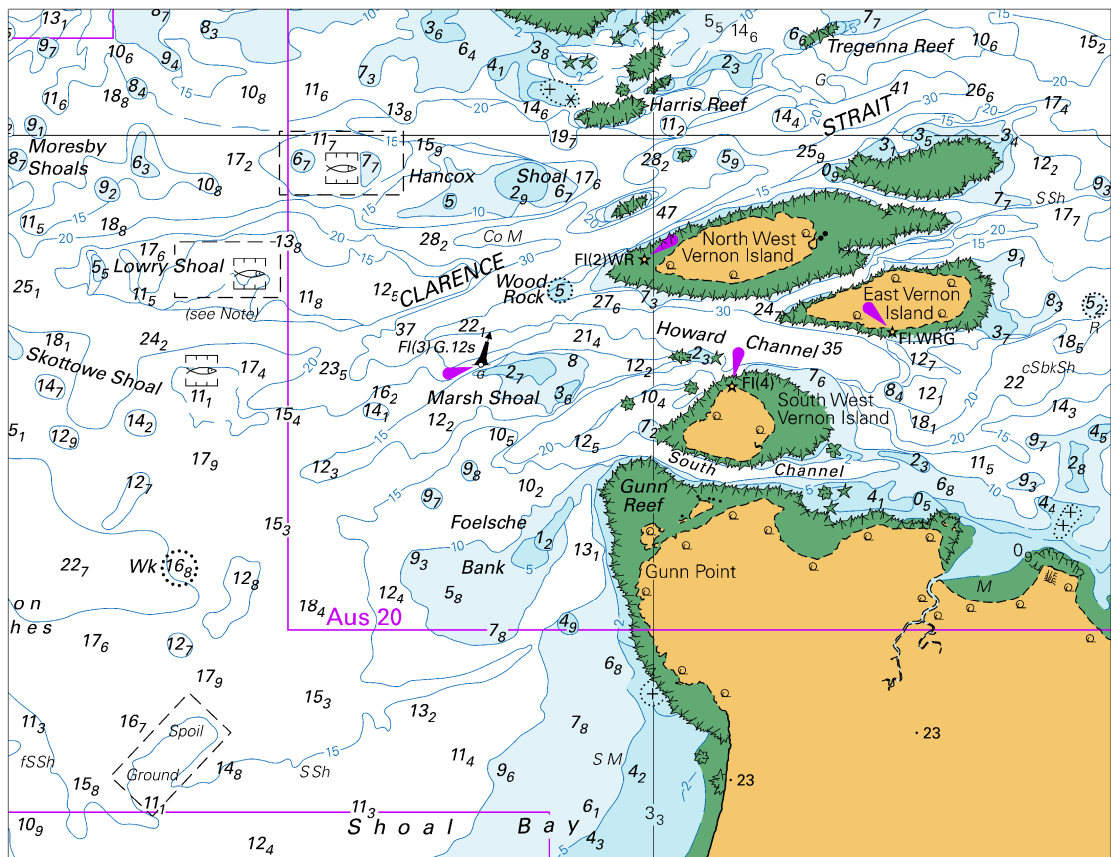


Block A for chart Aus 309

(82.2 x 84.7mm)

© Commonwealth of Australia 2024

To accompany Australian Notice to Mariners 701/2024

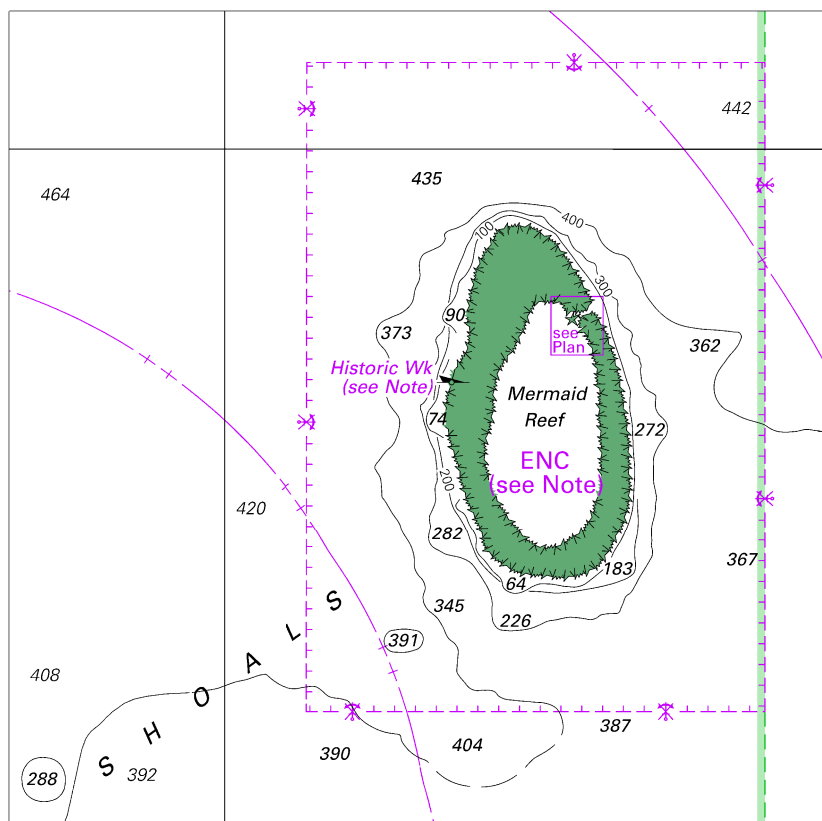


Block B for chart Aus 309

© Commonwealth of Australia 2024

(145.8 x 112.4mm)

To accompany Australian Notice to Mariners 703/2024

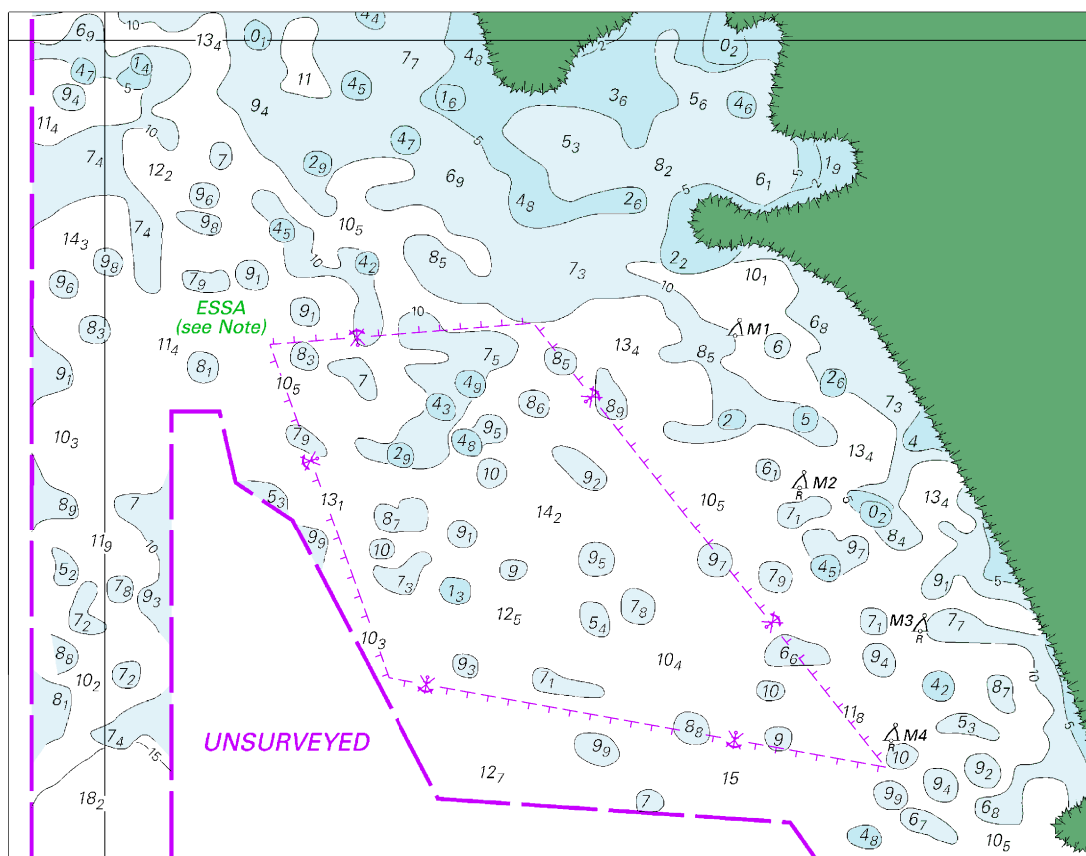


Block A for chart Aus 325

(107.8 x 107.2mm)

© Commonwealth of Australia 2024

To accompany Australian Notice to Mariners 703/2024

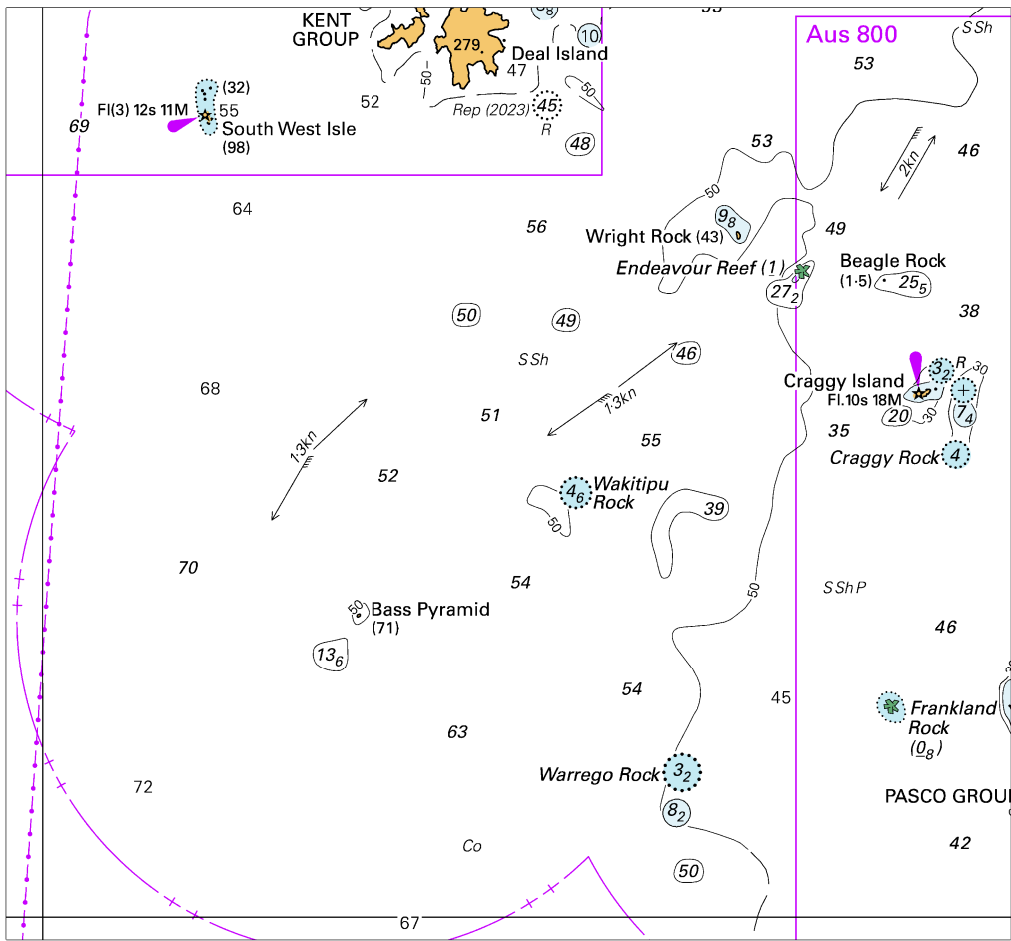


Block B for chart Aus325

© Commonwealth of Australia 2024

(143.5 x 112.1mm)

To accompany Australian Notice to Mariners 706/2024

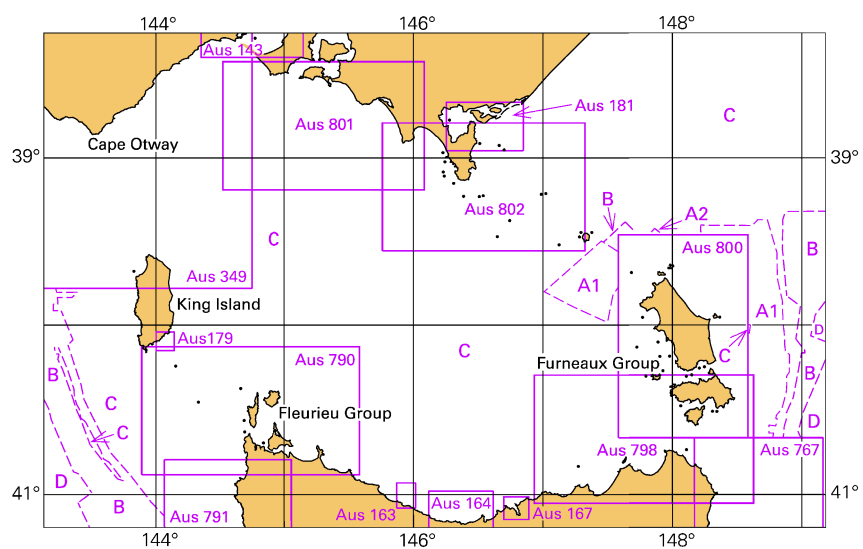


Block for chart Aus 487

© Commonwealth of Australia 2024

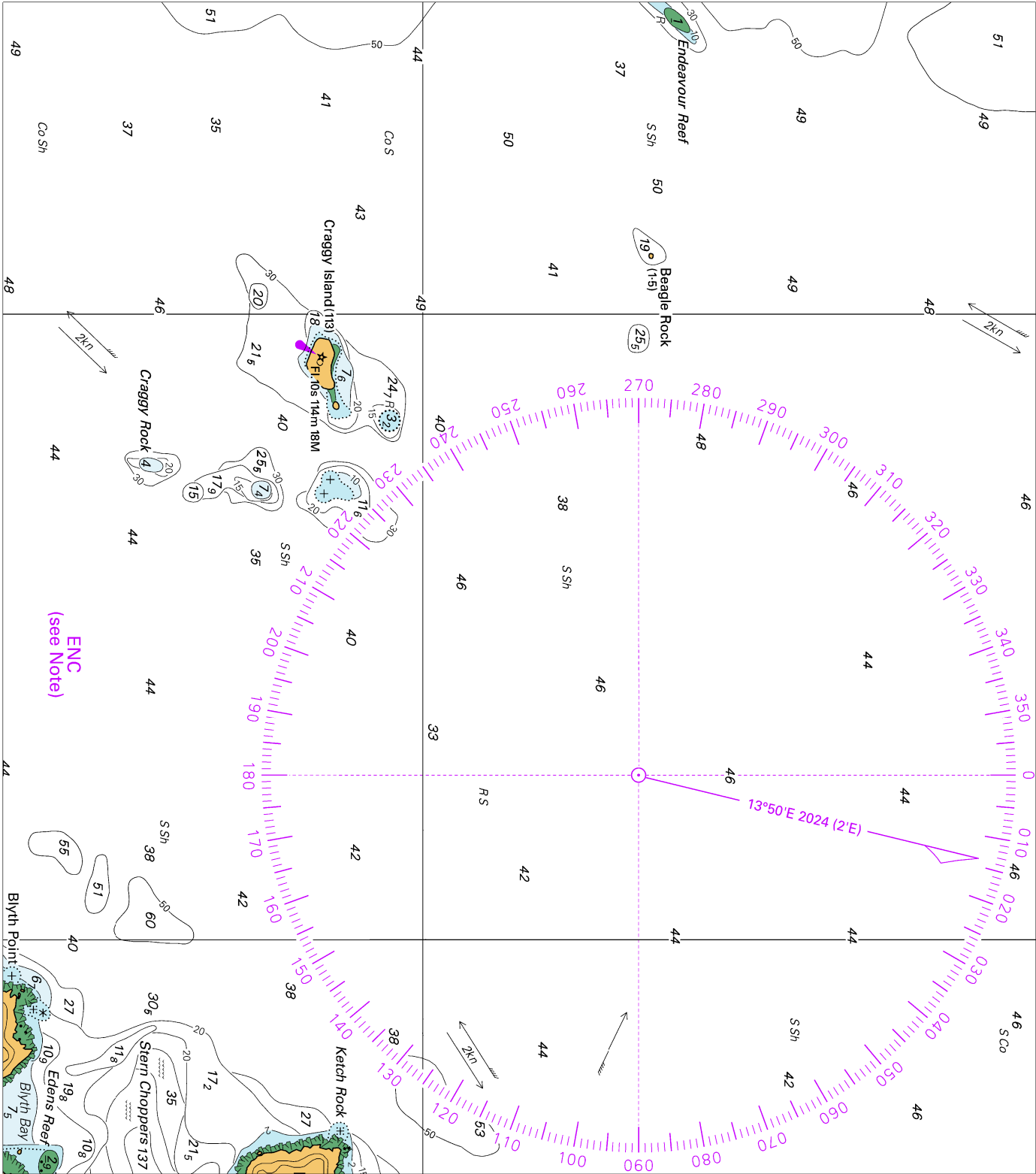
(132.8 x 123.3mm)

To accompany Australian Notice to Mariners 706/2024

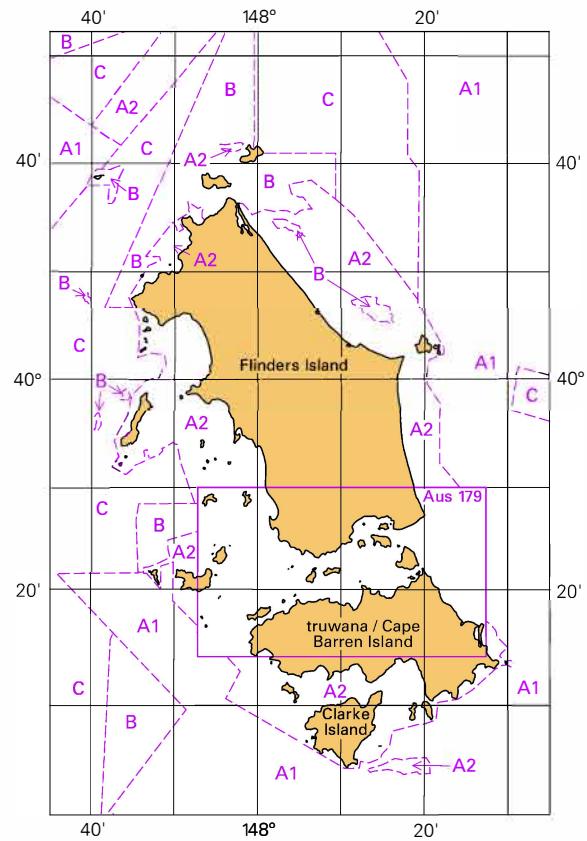


Block for chart Aus 487 © Commonwealth of Australia 2024

(103.4 x 65.4mm)



To accompany Australian Notice to Mariners 706/2024

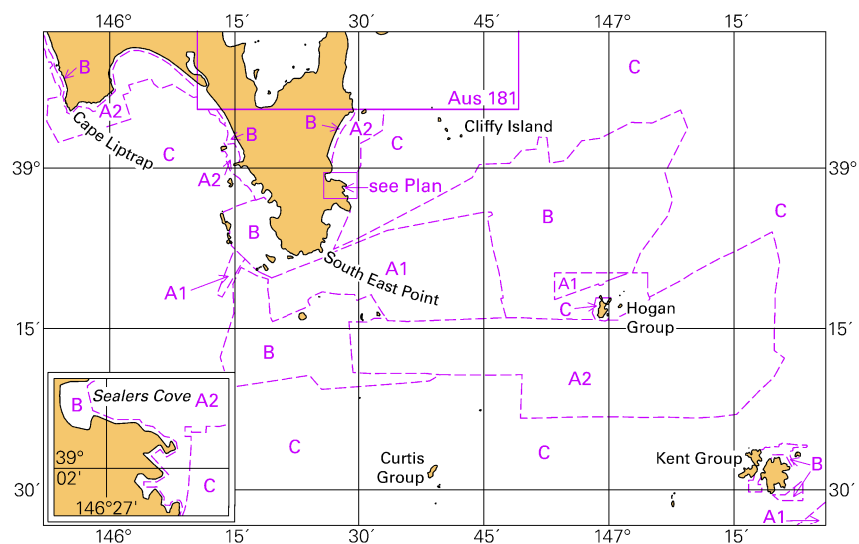


Block for chart Aus 800

(66.0 x 103.5mm)

© Commonwealth of Australia 2024

To accompany Australian Notice to Mariners 706/2024



Block for chart Aus 802 © Commonwealth of Australia 2024

(103.5 x 65.4mm)