



17 February 2023

Edition 4

# AUSTRALIAN NOTICES TO MARINERS

## Notices 116 - 173

Published fortnightly by the Australian Hydrographic Office



Australian Notices to Mariners are the authority for correcting charts and publications published by the Australian Hydrographic Office covering Australia, Papua New Guinea, Solomon Islands, Australian Antarctic Territory and Timor-Leste.

Commodore S.T. DUNNE RAN  
*Hydrographer of Australia*

---

### SECTIONS.

- I. Australian Notices to Mariners, including blocks and notes.
- II. Hydrographic Reports.

### SUPPLEMENTS.

- I. Tracings
- II. Cumulative List of Australian Notices to Mariners.
- III. Cumulative List of Temporary and Preliminary Australian Notices to Mariners.
- IV. Temporary and Preliminary Notices in force.

---

© Commonwealth of Australia 2023

This work is copyright. Apart from any use permitted under the Copyright Act 1968, no part may be reproduced by any process, adapted, communicated or commercially exploited without prior written permission from The Commonwealth represented by the Australian Hydrographic Office.

## IMPORTANT NOTICE

This edition of Notices to Mariners includes all significant information affecting Australian Hydrographic Office (AHO) products which the AHO has become aware of since the last edition. All reasonable efforts have been made to ensure the accuracy and completeness of the information, including third party information, on which these updates are based. The AHO regards third parties from which it receives information as reliable, however the AHO cannot verify all such information and errors may therefore exist. The AHO does not accept liability for errors in third party information.

---

## GENERAL INSTRUCTIONS

The substance of these notices should be inserted on the charts affected.

Bearings are referred to the true compass and are reckoned clockwise from North; those relating to lights are given as seen by an observer from seaward.

Positions quoted in notices relate to WGS84 which is the horizontal datum for all charts produced by the Australian Hydrographic Office.

The range quoted for a light is its nominal range.

Depths are with reference to the chart datum of each chart. Heights are above mean high water springs or mean higher high water, as appropriate.

The capital letter (P) or (T) after the number of any notice denotes a preliminary or temporary notice respectively, which are contained separately at the end of the permanent notices.

---

## REPORTING OF DANGERS

Mariners are particularly requested to notify the AUSTRALIAN HYDROGRAPHIC OFFICE, Locked Bag 8801 Wollongong, NSW 2500 (e-mail [datacentre@hydro.gov.au](mailto:datacentre@hydro.gov.au) or, alternatively by filling in and submitting the [Hydrographic Notes](#) forms located on the web site – [www.hydro.gov.au](http://www.hydro.gov.au)), immediately on the discovery of new dangers or suspected dangers to navigation. For changes or defects in aids to navigation notify AusSAR (Fax 02-6230 6868 or email [rccaus@amsa.gov.au](mailto:rccaus@amsa.gov.au)).

---

## AUTHORISED USE

Copies of Australian notices are available free of charge from the AHO website ([www.hydro.gov.au](http://www.hydro.gov.au)) and through the eNotices (email) service ([www.hydro.gov.au/enotices/enotices.htm](http://www.hydro.gov.au/enotices/enotices.htm)).

Individual Notices may be copied for the purpose of inserting Notice substance on official charts and publications. Paper copies may be printed by chart agents and distributed to customers on a cost recovery basis. Participating chart agents are listed on the AHO website as providing a 'Paper Notices to Mariners' service ([www.hydro.gov.au/webapps/jsp/agents/agents-list.jsp](http://www.hydro.gov.au/webapps/jsp/agents/agents-list.jsp)). Copies of the notices may not be sold for profit without prior written agreement.

## NUMERICAL INDEX OF NOTICES TO MARINERS

### Edition No 4

| Notices | Aus Chart, INT Chart, ENC Cell, AHP, BA Pubs         |
|---------|--|
| 116     | Aus 20, 141, 178, 179, 349, 487, 787, 788, 789, 904  |
| 117     | Aus 222, 242, 309, PNG 621                           |
| 118     | Aus 200  |
| 119     | Aus 200  |
| 120     | Aus 237  |
| 121     | Aus 254  |
| 122     | Aus 829, 830   |
| 123     | Aus 292, 293, 294, 296, 700, 839, 841, 842           |
| 124     | Aus 324, 325   |
| 125     | Aus 4060, INT 60                                     |
| 126     | Aus 53, 326  |
| 127     | Aus 776, 777   |
| 128     | Aus 487, 802   |
| 129     | Aus 164  |
| 130     | Aus 790, 798, 799, 800, 801                          |
| 131(T)  | Aus 222  |
| 132(T)  | Aus 812  |
| 133(T)  | Aus 813  |
| 134(T)  | Aus 301  |
| 135(T)  | Aus 817  |
| 136(T)  | Aus 6  |
| 137(T)  | Aus 236  |
| 138(T)  | Aus 4  |
| 139(T)  | Aus 293, 700, 839, 841                               |
| 140(T)  | Aus 22, 309, 310                                     |
| 141(T)  | Aus 112  |
| 142(T)  | Aus 328, 742   |
| 143(T)  | Aus 328, 329, 744                                    |
| 144(T)  | Aus 116  |
| 145(T)  | Aus 53   |
| 146(T)  | Aus 53   |
| 147(T)  | Aus 325, 326   |
| 148(T)  | Aus 74, 331  |
| 149(T)  | Aus 118  |
| 150(T)  | Aus 754  |
| 151(T)  | Aus 777  |
| 152(T)  | Aus 140, 348, 349                                    |
| 153(T)  | Aus 143, 155   |
| 154(T)  | Aus 349  |
| 155(T)  | Aus 349, 787   |
| 156(T)  | Aus 349, 487, 801                                    |
| 157(T)  | Aus 349, 487, 787, 801                               |
| 158(T)  | Aus 141, 349   |
| 159(T)  | Aus 141  |
| 160(T)  | Aus 349  |
| 161(T)  | Aus 141, 349   |
| 162(T)  | Aus 143, 144   |
| 163(T)  | Aus 143, 144, 788                                    |
| 164(T)  | Aus 143, 155   |
| 165(T)  | Aus 357, 487, 4601, INT 601                          |
| 166(T)  | Aus 151  |
| 167(T)  | Aus 179  |
| 168(T)  | Aus 178  |
| 169(P)  | Aus 163, 164, 167, 179, 487, 790, 798, 799, 800      |
| 170(T)  | Aus 163, 164, 167, 178, 179, 487, 790, 798, 799, 800 |
| 171(T)  | Aus 790, 799   |
| 172(P)  | Aus 790  |
| 173(T)  | Aus 178, 790   |

## NUMERICAL INDEX OF CHARTS AFFECTED

### Edition No 4

| Aus Chart | Notices  |
|-----------|--|
| Aus 4     | 138(T)   |
| Aus 6     | 136(T)   |
| Aus 20    | 116  |
| Aus 22    | 140(T)   |
| Aus 53    | 126, 145(T), 146(T)  |
| Aus 74    | 148(T)   |
| Aus 112   | 141(T)   |
| Aus 116   | 144(T)   |
| Aus 118   | 149(T)   |
| Aus 140   | 152(T)   |
| Aus 141   | 116, 158(T), 159(T), 161(T)  |
| Aus 143   | 153(T), 162(T), 163(T), 164(T)   |
| Aus 144   | 162(T), 163(T)   |
| Aus 151   | 166(T)   |
| Aus 155   | 153(T), 164(T)   |
| Aus 163   | 169(P), 170(T)   |
| Aus 164   | 129, 169(P), 170(T)  |
| Aus 167   | 169(P), 170(T)   |
| Aus 178   | 116, 168(T), 170(T), 173(T)  |
| Aus 179   | 116, 167(T), 169(P), 170(T)  |
| Aus 200   | 118, 119   |
| Aus 222   | 117, 131(T)  |
| Aus 236   | 137(T)   |
| Aus 237   | 120  |
| Aus 242   | 117  |
| Aus 254   | 121  |
| Aus 292   | 123  |
| Aus 293   | 123, 139(T)  |
| Aus 294   | 123  |
| Aus 296   | 123  |
| Aus 301   | 134(T)   |
| Aus 309   | 117, 140(T)  |
| Aus 310   | 140(T)   |
| Aus 324   | 124  |
| Aus 325   | 124, 147(T)  |
| Aus 326   | 126, 147(T)  |
| Aus 328   | 142(T), 143(T)   |
| Aus 329   | 143(T)   |
| Aus 331   | 148(T)   |
| Aus 348   | 152(T)   |
| Aus 349   | 116, 152(T), 154(T), 155(T), 156(T),<br>157(T), 158(T), 160(T), 161(T) |
| Aus 357   | 165(T)   |
| Aus 487   | 116, 128, 156(T), 157(T), 165(T),<br>169(P), 170(T)                    |
| Aus 700   | 123, 139(T)  |
| Aus 742   | 142(T)   |
| Aus 744   | 143(T)   |
| Aus 754   | 150(T)   |
| Aus 776   | 127  |
| Aus 777   | 127, 151(T)  |
| Aus 787   | 116, 155(T), 157(T)  |
| Aus 788   | 116, 163(T)  |
| Aus 789   | 116  |
| Aus 790   | 130, 169(P), 170(T), 171(T), 172(P),<br>173(T)                         |
| Aus 798   | 130, 169(P), 170(T)  |

| Aus Chart | Notices                     |
|-----------|-----------------------------|
| Aus 799   | 130, 169(P), 170(T), 171(T) |
| Aus 800   | 130, 169(P), 170(T)         |
| Aus 801   | 130, 156(T), 157(T)         |
| Aus 802   | 128                         |
| Aus 812   | 132(T)                      |
| Aus 813   | 133(T)                      |
| Aus 817   | 135(T)                      |
| Aus 829   | 122                         |
| Aus 830   | 122                         |
| Aus 839   | 123, 139(T)                 |
| Aus 841   | 123, 139(T)                 |
| Aus 842   | 123                         |
| Aus 904   | 116                         |
| Aus 4060  | 125                         |
| Aus 4601  | 165(T)                      |
| PNG 621   | 117                         |

| INT Chart | Notices |
|-----------|---------|
| INT 60    | 125     |
| INT 601   | 165(T)  |

**116 AUSTRALIA - Products - New Charts, New Editions, Withdrawn Charts**

Australian Hydrographic Office

**New Charts**

| <i>Chart</i> | <i>Title and Geographical limits</i>  | <i>Scale</i> | <i>Publication Date</i> | <i>Remarks</i>                                 |
|--------------|---|--------------|-------------------------|--|
| Aus 904      | Timor Leste (North Coast) - Caitehu to Hera<br>8° 23'.38 S – 8° 36'.66 S<br>125° 21'.36 E – 125° 42'.44 E | 1:37 500     | 17 February 2023        | New chart with latest bathymetric survey data. |

**New Electronic Navigation Chart (Aus ENC)**

| <i>Cell Name</i> | <i>Title</i> | <i>Publication Date</i> | <i>Remarks</i> |
|------------------|--------------|-------------------------|----------------|
| NIL              |              |                         |                |

**New Editions and Withdrawn Charts**

| <i>Chart</i>                  | <i>Title</i>  | <i>Scale</i>         | <i>Publication Date</i> | <i>Remarks</i>   |
|-------------------------------|---|----------------------|-------------------------|--|
| Aus 20<br><b>(Edition 2)</b>  | Australia - North Coast - Northern Territory - Clarence Strait  | 1:50 000             | 17 February 2023        | New edition with general updating throughout; including new bathymetric data.<br><b>Chart Aus 20 Edition 1 dated 14 December 2012 is now superseded and must be withdrawn from use.</b>  |
| Aus 179<br><b>(Edition 3)</b> | Australia - Tasmania - Plans in Tasmania (Sheet 1)<br>Plan:<br>Approaches to Grassy Harbour<br>Franklin Sound | 1:37 500<br>1:75 000 | 17 February 2023        | New edition with general updating throughout; including new bathymetric data.<br><b>Chart Aus 179 Edition 2 dated 25 March 2011 is now superseded and must be withdrawn from use.</b>    |
| Aus 349<br><b>(Edition 3)</b> | Australia - South Coast - Victoria - Cape Nelson to Port Phillip  | 1:300 000            | 17 February 2023        | New edition with general updating throughout; including new bathymetric data.<br><b>Chart Aus 349 Edition 2 dated 10 December 2021 is now superseded and must be withdrawn from use.</b> |
| Aus 487<br><b>(Edition 2)</b> | Australia - South Coast - Bass Strait   | 1:500 000            | 17 February 2023        | New edition with general updating throughout; including new bathymetric data.<br><b>Chart Aus 487 Edition 1 dated 7 January 2005 is now superseded and must be withdrawn from use.</b>   |

**Charts withdrawn without replacement**

| <i>Chart</i>                | <i>Title</i>   | <i>Scale</i>   | <i>Remarks</i>  |
|-----------------------------|--|--|---|
| Aus 141<br><b>Edition 1</b> | Australia - South Coast - Victoria - Plans in South West<br>Victoria<br>Plans:<br>Apollo Bay Boat Harbour<br>Port Campbell<br>Port Fairy<br>Warrnambool<br>Loutit Bay<br>Apollo Bay<br>Port Fairy to Warrnambool | <br><br><br>1:7 500<br>1:7 500<br>1:10 000<br>1:10 000<br>1:25 000<br>1:37 500<br>1:50 000 | 8 May 2009<br><br>Paper chart<br>rationalisation.       |
| Aus 178<br><b>Edition 2</b> | Australia - Tasmania - Plans in Tasmania (Sheet 2)<br>Plans:<br>Currie Harbour<br>Grassy Harbour<br>Stanley Harbour<br>Wynyard<br>Port Latta<br>Smithton<br>Approaches to Grassy Harbour                         | <br><br>1:7 500<br>1:7 500<br>1:7 500<br>1:10 000<br>1:12 500<br>1:25 000<br>1:37 500      | 18 December 2015<br><br>Paper chart<br>rationalisation. |
| Aus 787<br><b>Edition 1</b> | Australia - South Coast - Victoria - Childers Cove to Cape<br>Otway  | 1:150 000  | 29 January 2010<br><br>Paper chart<br>rationalisation.  |
| Aus 788<br><b>Edition 1</b> | Australia - South Coast - Victoria - Cape Otway to Cape<br>Schanck   | 1:150 000  | 14 June 1996<br><br>Paper chart<br>rationalisation.     |
| Aus 789<br><b>Edition 2</b> | Australia - South Coast - Bass Strait - King Island  | 1:150 000  | 10 December 2021<br><br>Paper chart<br>rationalisation. |

**Chart permanently withdrawn**

Charts listed above as withdrawn no longer meet chart carriage requirements and should be marked as "superseded" and replaced with the new chart/ new edition listed prior to passage through the area covered by the new chart.

When placing orders with a chart agent between notice of forthcoming edition and its publication, mariners should advise whether their order pertains to the current edition or the new edition.

For further details refer to the AHO website at [www.hydro.gov.au](http://www.hydro.gov.au) for new edition and new chart stock arrival information.

**117 AUSTRALIA - Products - New Charts and New Editions to be published shortly**

Australian Hydrographic Office

**New Charts to be published shortly**

| Chart | Title | Scale | Remarks |
|-------|-------|-------|---------|
| NIL   |       |       |         |

**New Editions to be published shortly**

| Chart   | Title  | Scale               | Remarks   |
|---------|--|---------------------|---|
| Aus 222 | Australia - East Coast - New South Wales - Clarence River Plan:<br>Goodwood Island Wharf | 1:15 000<br>1:6 000 | New edition with general updating throughout; including new bathymetric data within Clarence River.   |
| Aus 242 | Australia - East Coast - Queensland - Port Bundaberg                                     | 1:7 500             | New edition with general updating throughout; including new bathymetric data and the removal of insets Burnett River (Northern Section) and Burnett River (Southern Section). |
| Aus 309 | Australia - North Coast - Darwin to Penguin Shoal (Eastern Sheet)                        | 1:300 000           | New edition with general updating throughout; including latest bathymetric data.  |
| PNG 621 | Papua New Guinea - South Coast - Approaches to Port Moresby                              | 1:37 500            | New edition with general updating throughout; including new bathymetric data over Nadeara Reef.   |

**118 AUSTRALIA - NEW SOUTH WALES - Port Jackson - Darling Harbour - Contour**

Port Authority of New South Wales

**Aus 200 [1006/2022]**

|        |                  |               |                |
|--------|------------------|---------------|----------------|
| Insert | contour, between | 33° 51'.803 S | 151° 11'.832 E |
|        |                  | 33° 51'.809 S | 151° 11'.860 E |
|        |                  | 33° 51'.830 S | 151° 11'.852 E |

**119 AUSTRALIA - NEW SOUTH WALES - Port Jackson - Sydney Harbour - Western Channel - Fog signal removed**

Port Authority of New South Wales

**Aus 200 [118/2023]**

|       |                 |              |               |
|-------|-----------------|--------------|---------------|
| Amend | light buoy to Q | 33° 49'.84 S | 151° 16'.46 E |
|-------|-----------------|--------------|---------------|

**120 AUSTRALIA - QUEENSLAND - Brisbane River - Hamilton Reach - Depths**

Port of Brisbane Pty Ltd

**Aus 237 (Upper Lytton Reach to Hamilton Reach) [NE 28/10/2022]**

|        |                    |             |              |
|--------|--------------------|-------------|--------------|
| Insert | accompanying block | 27° 26'.7 S | 153° 04'.6 E |
|--------|--------------------|-------------|--------------|

**121 AUSTRALIA - QUEENSLAND - Lindeman Island - Jetty**

Department of Defence

**Aus 254 (Lindeman Island) [1046/2021]**

|        |                          |              |               |
|--------|--------------------------|--------------|---------------|
| Delete | continuous line, between | 20° 27'.56 S | 149° 02'.46 E |
|        |                          | 20° 27'.60 S | 149° 02'.50 E |
|        | legend, Jetty            | 20° 27'.50 S | 149° 02'.49 E |

**122 AUSTRALIA - QUEENSLAND - Russell Island - Light sector**

Australian Maritime Safety Authority

**Aus 829 [602/2022]**

|        |  |              |               |
|--------|--|--------------|---------------|
| Insert | light sector, <i>W 318° - 306° (348°)</i> , emanating from light | 17° 13'.73 S | 146° 05'.70 E |
|--------|--|--------------|---------------|

**Aus 830 [602/2022]**

|        |  |              |               |
|--------|--|--------------|---------------|
| Insert | light sector, <i>W 318° - 306° (348°)</i> , emanating from light | 17° 13'.73 S | 146° 05'.70 E |
|--------|--|--------------|---------------|

**123 AUSTRALIA - TORRES STRAIT - Depths; rock; tidal panel**

Australian Hydrographic Office

**Aus 292 [773/2022]**

|        |                      |             |              |
|--------|----------------------|-------------|--------------|
| Insert | accompanying block A | 10° 28'.9 S | 142° 25'.0 E |
|        | accompanying block B | 10° 35'.5 S | 142° 25'.5 E |

**Aus 293 [7/2023]**

|        |                  |              |               |
|--------|------------------|--------------|---------------|
| Insert | legend, <i>R</i> | 10° 29'.77 S | 142° 21'.12 E |
|--------|------------------|--------------|---------------|

|        |   |              |               |
|--------|---|--------------|---------------|
| Delete | danger circle and legend, <i>Obstn</i> , centred on | 10° 29'.72 S | 142° 21'.13 E |
|--------|---|--------------|---------------|

**Aus 294 [11/2022]**

|        |                               |              |               |
|--------|-------------------------------|--------------|---------------|
| Insert | depth, <i>12<sub>3</sub>m</i> | 10° 36'.30 S | 141° 52'.41 E |
|        | depth, <i>12<sub>7</sub>m</i> | 10° 36'.53 S | 141° 53'.24 E |

|         |  |             |              |
|---------|--|-------------|--------------|
| Replace | depth, <i>11<sub>1</sub>m</i> , with depth, <i>12m</i> | 10° 36'.3 S | 141° 51'.5 E |
|---------|--|-------------|--------------|

|        |                               |             |              |
|--------|-------------------------------|-------------|--------------|
| Delete | depth, <i>11<sub>3</sub>m</i> | 10° 36'.2 S | 141° 52'.4 E |
|        | depth, <i>11<sub>6</sub>m</i> | 10° 36'.5 S | 141° 53'.2 E |

**Aus 296 [NE 9/12/2022]**

|       |   |              |               |
|-------|---|--------------|---------------|
| Amend | tidal stream data diamond, desig B, longitude text to <i>141° 54·0' E</i> | 10° 39'.52 S | 142° 08'.11 E |
|-------|---|--------------|---------------|

|      |                                    |               |                |
|------|------------------------------------|---------------|----------------|
| Move | tidal stream data diamond, desig B | 10° 31'.05 S  | 141° 54'.07 E  |
|      | to                                 | 10° 31'.000 S | 141° 54'.000 E |

**Aus 700 [6/2023]**

|        |                      |             |              |
|--------|----------------------|-------------|--------------|
| Insert | accompanying block B | 10° 30'.3 S | 142° 16'.7 E |
|        | accompanying block A | 10° 33'.3 S | 142° 00'.0 E |

|       |  |             |              |
|-------|--|-------------|--------------|
| Amend | tidal stream data diamond, desig A, latitude and longitude text to <i>10° 31·0' S 141° 54·0' E</i> | 10° 22'.0 S | 140° 49'.7 E |
|-------|--|-------------|--------------|

**Aus 839 [555/2022]**

|        |                    |             |              |
|--------|--------------------|-------------|--------------|
| Insert | accompanying block | 10° 29'.4 S | 142° 20'.1 E |
|--------|--------------------|-------------|--------------|

**Aus 841 [604/2022]**

|        |                      |             |              |
|--------|----------------------|-------------|--------------|
| Insert | accompanying block B | 10° 29'.4 S | 142° 21'.1 E |
|        | accompanying block A | 10° 31'.4 S | 142° 02'.0 E |

|       |  |            |              |
|-------|--|------------|--------------|
| Amend | tidal stream data diamond, desig D, latitude and longitude text to <i>10° 31·0' S 141° 54·0' E</i> | 9° 06'.1 S | 142° 04'.0 E |
|-------|--|------------|--------------|

**Aus 842 [305/2020]**

|        |                    |             |              |
|--------|--------------------|-------------|--------------|
| Insert | accompanying block | 10° 31'.4 S | 141° 53'.5 E |
|--------|--------------------|-------------|--------------|

|       |  |            |              |
|-------|--|------------|--------------|
| Amend | tidal stream data diamond, desig A, latitude and longitude text to <i>10° 31·0' S 141° 54·0' E</i> | 9° 02'.6 S | 141° 19'.0 E |
|-------|--|------------|--------------|



**124 AUSTRALIA - WESTERN AUSTRALIA - Eighty Mile Beach - Obstructions**

B Ellacott

**Aus 324 [9/2023]**

|        |  |              |               |
|--------|--|--------------|---------------|
| Insert | danger circle with legend, <i>Obstn</i> , centred on | 19° 32'.89 S | 120° 46'.92 E |
|        | danger circle with legend, <i>Obstn</i> , centred on | 19° 40'.29 S | 120° 42'.33 E |

**Aus 325 [58/2023]**

|        |  |              |               |
|--------|--|--------------|---------------|
| Insert | danger circle with legend, <i>Obstn</i> , centred on | 19° 40'.29 S | 120° 42'.33 E |
|        | danger circle with legend, <i>Obstn</i> , centred on | 19° 48'.87 S | 120° 23'.66 E |
|        | danger circle with legend, <i>Obstn</i> , centred on | 19° 49'.58 S | 120° 21'.82 E |
|        | danger circle with legend, <i>Obstn</i> , centred on | 19° 49'.68 S | 120° 00'.42 E |

**125 AUSTRALIA - WESTERN AUSTRALIA - Perth - Submarine cable**

Subcom

**Aus 4060 (INT 60) [1007/2022]**

|        |                          |             |              |
|--------|--------------------------|-------------|--------------|
| Insert | submarine cable, between | 25° 35'.3 S | 104° 00'.0 E |
|        |                          | 30° 53'.6 S | 112° 25'.4 E |
|        |                          | 30° 53'.6 S | 112° 58'.7 E |
|        |                          | 31° 22'.9 S | 113° 45'.6 E |
|        |                          | 31° 56'.2 S | 115° 45'.1 E |

**126 AUSTRALIA - WESTERN AUSTRALIA - Port Hedland - Obstruction***Former Notice - 991(T)/2021 is cancelled*

Pilbara Ports Authority

**Aus 53 [865/2022]**

|        |  |              |               |
|--------|--|--------------|---------------|
| Insert | depth, 6 <sub>3</sub> <i>m</i> , enclosed by danger circle, with legend <i>Obstn</i> | 20° 14'.72 S | 118° 37'.41 E |
|--------|--|--------------|---------------|

**Aus 326 [522/2021]**

|        |  |              |               |
|--------|--|--------------|---------------|
| Insert | depth, 6 <sub>3</sub> <i>m</i> , enclosed by danger circle, with legend <i>Obstn</i> | 20° 14'.72 S | 118° 37'.34 E |
|--------|--|--------------|---------------|

**127 AUSTRALIA - SOUTH AUSTRALIA - Port Victoria - Light beacons**

Department for Infrastructure and Transport SA Notice 3/2023

**Aus 776 [778/2022]**

|        |   |              |               |
|--------|---|--------------|---------------|
| Insert | light beacon, <i>Fl.G.2s</i> , with starboard lateral topmark | 34° 29'.20 S | 137° 25'.10 E |
| Delete | structure colour, R   | 34° 29'.4 S  | 137° 25'.4 E  |
|        | structure colour, R   | 34° 29'.7 S  | 137° 25'.8 E  |

**Aus 777 [720/2022]**

|        |   |              |               |
|--------|---|--------------|---------------|
| Insert | light beacon, <i>Fl.G.2s</i> , with starboard lateral topmark | 34° 29'.20 S | 137° 25'.10 E |
| Delete | structure colour, R   | 34° 29'.4 S  | 137° 25'.4 E  |

**128 AUSTRALIA - VICTORIA - Glennie Group - Citadel Island - Light**

Australian Maritime Safety Authority Final ATH 3/2023

**Aus 487 [983/2022]**

|       |                            |             |              |
|-------|----------------------------|-------------|--------------|
| Amend | light range to 15 <i>M</i> | 39° 06'.9 S | 146° 14'.2 E |
|-------|----------------------------|-------------|--------------|

**Aus 802 [607/2022]**

|       |                            |             |              |
|-------|----------------------------|-------------|--------------|
| Amend | light range to 15 <i>M</i> | 39° 06'.9 S | 146° 14'.2 E |
|-------|----------------------------|-------------|--------------|

**129 AUSTRALIA - TASMANIA - Devonport - Mersey River - Depths**

Veris

**Aus 164 (Devonport) [867/2022]**

|        |  |               |                |
|--------|--|---------------|----------------|
| Insert | depth, 1 <sub>7</sub> <i>m</i> , and extend contour W to enclose | 41° 11'.232 S | 146° 21'.960 E |
|        | depth, 1 <sub>7</sub> <i>m</i> , and extend contour W to enclose | 41° 11'.286 S | 146° 21'.961 E |

**130 AUSTRALIA - TASMANIA - Flinders Island to King Island - Chart withdrawn; chart limits; ZOC diagram; chart note; navline; legends**  
Australian Hydrographic Office

*Note:* position of existing chart notes may vary on certain charts.

**Aus 790 [939/2022]**

|        |  |              |               |
|--------|--|--------------|---------------|
| Insert | magenta limits with legend, <i>Aus 179</i> , in SE corner, between | 40° 07'.68 S | 144° 00'.00 E |
|        |  | 40° 08'.34 S | 144° 00'.00 E |
|        |  | 40° 08'.34 S | 144° 08'.42 E |
|        |  | 40° 07'.68 S | 144° 08'.42 E |
|        | accompanying chart note, ELECTRONIC NAVIGATIONAL CHART (ENC)       | 40° 21'.0 S  | 145° 32'.5 E  |
|        | accompanying chart note, ESTUARY AND RIVER ENTRANCES               | 40° 21'.0 S  | 145° 27'.3 E  |
|        | magenta legend, <i>ENC (see Note)</i>                              | 40° 45'.5 S  | 145° 22'.5 E  |
|        | magenta legend, <i>ENC (see Note)</i>                              | 40° 45'.6 S  | 145° 08'.5 E  |
|        | legend, <i>Estuary and River Entrances (see Note)</i>              | 40° 47'.2 S  | 145° 10'.8 E  |
|        | magenta legend, <i>ENC (see Note)</i>                              | 40° 48'.0 S  | 145° 28'.0 E  |
| Amend  | magenta legend to <i>Aus 179</i>                                   | 40° 48'.2 S  | 144° 46'.2 E  |
| Delete | magenta limits with legend, <i>Aus 178</i> , centred on            | 40° 08'.5 S  | 144° 04'.5 E  |
|        | magenta limits with legend, <i>Aus 178</i> , centred on            | 40° 46'.3 S  | 145° 18'.3 E  |
|        | magenta limits with legend, <i>Aus 178</i> , centred on            | 40° 48'.8 S  | 145° 07'.0 E  |
|        | magenta limits with legend, <i>Aus 178</i> , centred on            | 40° 50'.4 S  | 145° 23'.3 E  |
|        | magenta limits, centred on   | 40° 51'.9 S  | 144° 52'.6 E  |
|        | legend, <i>Aus 178</i> , and arrows, centred on                    | 40° 51'.9 S  | 144° 53'.3 E  |
|        | magenta limits with legend, <i>Aus 178</i> , and arrow, centred on | 40° 52'.1 S  | 144° 51'.5 E  |
|        | magenta limits, centred on   | 40° 52'.3 S  | 144° 53'.0 E  |

**Aus 798 [NE 13/5/2022]**

|        |   |              |               |
|--------|---|--------------|---------------|
| Insert | magenta legend, <i>ENC (see Note)</i>   | 40° 45'.8 S  | 147° 54'.3 E  |
|        | magenta legend, <i>ENC (see Note)</i>   | 40° 48'.2 S  | 147° 35'.3 E  |
|        | a dashed line in a direction 042° for a distance of 3.2M, thence a continuous line for 2.5M, with legend 222°, emanating from | 40° 50'.94 S | 147° 35'.69 E |
|        | accompanying ZOC diagram  | 40° 56'.5 S  | 147° 46'.0 E  |
|        | accompanying chart note, ELECTRONIC NAVIGATIONAL CHART (ENC)  | 41° 01'.5 S  | 147° 57'.0 E  |
| Delete | magenta limits with legend, <i>Aus 179</i> , centred on   | 40° 45'.4 S  | 147° 56'.4 E  |
|        | magenta limits with legend, <i>Aus 179</i> , centred on   | 40° 48'.5 S  | 147° 38'.3 E  |

**Aus 799 [870/2022]**

|        |  |             |              |
|--------|--|-------------|--------------|
| Insert | magenta legend, <i>ENC (see Note)</i>                              | 40° 58'.4 S | 145° 46'.9 E |
| Delete | magenta limits with legend, <i>Aus 178</i> , centred on            | 40° 59'.0 S | 145° 44'.3 E |
|        | magenta limits with legend, <i>Aus 178</i> , and arrow, centred on | 41° 07'.4 S | 145° 41'.7 E |

**Aus 800 [1019/2022]**

|        |  |             |              |
|--------|--|-------------|--------------|
| Insert | accompanying chart note, ELECTRONIC NAVIGATIONAL CHART (ENC) | 40° 01'.0 S | 148° 04'.0 E |
|        | magenta legend, <i>ENC (see Note)</i>                        | 40° 07'.5 S | 148° 00'.0 E |
| Delete | magenta limits with legend, <i>Aus 179</i> , centred on      | 40° 07'.1 S | 148° 00'.2 E |
|        | magenta limits with legend, <i>Aus 179</i> , centred on      | 40° 34'.5 S | 147° 38'.7 E |

**Aus 801 [562/2022]**

|       |  |             |              |
|-------|--|-------------|--------------|
| Amend | legend to <i>Adjoining Chart Aus 349</i> in W border | 38° 42'.5 S | 144° 31'.1 E |
|-------|--|-------------|--------------|

**131(T)/2023 AUSTRALIA - NEW SOUTH WALES - Clarence River - Yamba Channel - Harbour works**

Port Authority of New South Wales Notice 1/2023

On or about 20 February 2023, works associated with the removal and replacement of the lead light towers will be in progress in the vicinity of positions 29° 25'.46 S 153° 20'.63 E and 29° 25'.52 S 153° 21'.05 E.

Barges and support vessels are on site and will display appropriate lights and shapes. The mooring lines will be marked by special buoys.

Temporary lights will be fitted to the new lead towers prior to installation of the tower structure and permanent lighting.

A no wash zone will exist around the construction areas and will be marked by special light buoys.

Mariners are advised to navigate with caution in the area.

**Chart temporarily affected - Aus 222**

**132(T)/2023 AUSTRALIA - NEW SOUTH WALES - Coffs Harbour - Light buoy off station northeastwards**

NSW Department of Primary Industries

The special light buoy, *Fl. Y. 5s (Sep-Jun)* (30° 14'.85 S 153° 21'.61 E), is off station and in position 30° 15'.92 S 153° 21'.18 E.

**Chart temporarily affected - Aus 812**

**133(T)/2023 AUSTRALIA - NEW SOUTH WALES - Crabbes Creek Beach - Wreck eastwards**

Australian Maritime Safety Authority

A wreck exists in position 28° 29'.43 S 153° 38'.52 E.

**Chart temporarily affected - Aus 813**

**134(T)/2023 AUSTRALIA - QUEENSLAND - Boyd Point - Light buoy off station westwards**

Department of Agriculture and Fisheries

The special light buoy, *Fl. Y. 3s FAD* (12° 54'.71 S 141° 22'.63 E), is off station and is currently in position 12° 56'.45 S 141° 22'.19 E.

**Chart temporarily affected - Aus 301**

**135(T)/2023 AUSTRALIA - QUEENSLAND - Great Sandy Strait - Mary River - Wreck salvaged***Former Notice - 64(T)/2022 is cancelled*

Maritime Safety Queensland

Cancel this notice on receipt.

**Chart formerly affected - Aus 817**

**136(T)/2023 AUSTRALIA - QUEENSLAND - Karumba - Light buoy unlit**

Maritime Safety Queensland Notice 64(T)/2023

The starboard lateral light buoy, *Fl. G. 2s No17* (17° 26'.71 S 140° 46'.91 E), is unlit.

**Chart temporarily affected - Aus 6**

**137(T)/2023 AUSTRALIA - QUEENSLAND - Pumicestone Channel - Drilling operations**

Maritime Safety Queensland Notice 55(T)/2023

The barge *Investigator* and a support vessel are conducting drilling operations in the vicinity of Bribie Island Bridge (27° 04'.24 S 153° 08'.71 E).

The operational area will be marked to the north and south by special light buoys.

All vessels will display appropriate lights and shapes and will monitor VHF Ch 16.

Mariners are advised to navigate with caution in the area.

**Chart temporarily affected - Aus 236**

**138(T)/2023 AUSTRALIA - QUEENSLAND - Weipa - South Channel - Light buoy off station**

Maritime Safety Queensland Notice 65(T)/2023

The special light buoy, *Fl(5)Y.20s* (12° 41'.28 S 141° 41'.09 E), is off station.

**Chart temporarily affected - Aus 4**

**139(T)/2023 AUSTRALIA - TORRES STRAIT - Prince of Wales Channel - Herald Patches - Shoaling charted***Former Notice - 28(P)/2022 is cancelled*

Australian Hydrographic Office

Cancel this notice on receipt.

**Chart formerly affected - Aus 293 - Aus 700 - Aus 839 - Aus 841**

**140(T)/2023 AUSTRALIA - NORTHERN TERRITORY - Bathurst Island - Survey operations westwards**

Northern Territory Government Notice 8(T)/2022

On or about 22 February 2023, vessel *Bhagwan K*, with a towed array, will be conducting survey operations between the following positions:

9° 49'.25 S 130° 15'.80 E  
 10° 43'.81 S 130° 17'.02 E  
 11° 11'.81 S 129° 59'.90 E  
 12° 01'.46 S 129° 54'.45 E.

The vessel will display appropriate lights and shapes and will monitor VHF Ch 10 and Ch 16.

Mariners are advised to navigate with caution in the area.

**Chart temporarily affected - Aus 22 - Aus 309 - Aus 310**

**141(T)/2023 AUSTRALIA - WESTERN AUSTRALIA - Fremantle - Inspection works**

Department of Transport WA Notice 5560/2023

On or about 20 February 2023, inspection works on the bridge will be in progress in the vicinity of position 32° 02'.36 S 115° 45'.57 E.

The channel will remain open to navigation, however when the barge is positioned in the centre span, mariners will be diverted around the work area which will be marked on either side of the barge by special light buoys and spotter vessels. When the barge is within the centre span vessels travelling upstream are encouraged to pass through the southern span, which has a clearance height of 7.91m HAT and a minimum water depth of 2.27m LAT.

All vessels associated with the works will display appropriate lights and shapes and will monitor VHF Ch 9 and Ch 16.

Mariners are advised to navigate with caution in the area and are encouraged to contact the spotter vessel upon approach.

**Chart temporarily affected - Aus 112**

**142(T)/2023 AUSTRALIA - WESTERN AUSTRALIA - Montebello Islands - Scientific instrument westwards recovered**  
*Former Notice - 955(T)/2022 is cancelled*  
 RPS Group

Cancel this notice on receipt.

**Chart formerly affected - Aus 328 - Aus 742**

**143(T)/2023 AUSTRALIA - WESTERN AUSTRALIA - Muiron Islands - Removal works northwestwards completed**  
*Former Notice - 110(T)/2023 is cancelled*  
 Woodside Energy Ltd

Cancel this notice on receipt.

**Chart formerly affected - Aus 328 - Aus 329 - Aus 744**

**144(T)/2023 AUSTRALIA - WESTERN AUSTRALIA - Port Geographe Marina - Dredging operations completed**  
*Former Notice - 908(T)/2022 is cancelled*  
 Department of Transport WA

Cancel this notice on receipt.

**Chart formerly affected - Aus 116**

**145(T)/2023 AUSTRALIA - WESTERN AUSTRALIA - Port Hedland - Light beacon maintenance works**  
 Pilbara Ports Authority Notice PH2(T)/2023

Barges *Pilbara 250* and *Pilbara 500* and support vessels *Quokka*, *Keller Ocean* and *Hardline* are conducting light beacon maintenance works between C1 (19° 59'.49 S 118° 26'.17 E) and C14 (20° 08'.81 S 118° 29'.73 E).

Works will involve the removal of old beacons and installation of new beacons. Temporary lights will be installed on the barges, with light characteristics corresponding with the the light characteristic of the beacon at which the maintenance is being conducted.

Vessels will display appropriate lights and shapes and will monitor VHF Ch 12 and Ch 16.

Mariners are advised to navigate with caution in the area and keep well clear.

**Chart temporarily affected - Aus 53**

**146(T)/2023 AUSTRALIA - WESTERN AUSTRALIA - Port Hedland - Scientific instruments recovered**  
*Former Notice - 461(T)/2022 is cancelled*  
 Pilbara Ports Authority

Cancel this notice on receipt.

**Chart formerly affected - Aus 53**

**147(T)/2023 AUSTRALIA - WESTERN AUSTRALIA - Port Hedland - Scientific instruments recovered**  
*Former Notice - 540(T)/2022 is cancelled*  
 Atlas Iron

Cancel this notice on receipt.

**Chart formerly affected - Aus 325 - Aus 326**

**148(T)/2023 AUSTRALIA - WESTERN AUSTRALIA - Shark Bay - Denham Channel - Scientific instrument**  
 Department of Transport WA Notice 5561/2023

A subsurface scientific instrument, 0.66m above the seabed, exists in position 25° 53.91' S 113° 14.11' E.

**Chart temporarily affected - Aus 74 - Aus 331**

**149(T)/2023 AUSTRALIA - WESTERN AUSTRALIA - South West Island - Wreck**  
Department of Transport WA Notice 5550/2023

A wreck exists in position 35° 11'.33 S 117° 52'.47 E.

Mariners are advised to navigate with caution in the area.

**Chart temporarily affected - Aus 118**

**150(T)/2023 AUSTRALIA - WESTERN AUSTRALIA - Two Rocks - Wreck**  
Department of Transport WA Notice 5556/2023

A wreck exists in position 31° 29'.48 S 115° 34'.39 E.

Mariners are advised to navigate with caution in the area.

**Chart temporarily affected - Aus 754**

**151(T)/2023 AUSTRALIA - SOUTH AUSTRALIA - Lucky Bay - Dredging operations completed**  
*Former Notice - 934(T)/2020 is cancelled*  
Department for Infrastructure and Transport SA

Cancel this notice on receipt.

**Chart formerly affected - Aus 777**

**152(T)/2023 AUSTRALIA - VICTORIA - Cape Nelson - Light range reduced**  
Australian Maritime Safety Authority Auscoast Warning 33/2023

The range of the light (38° 25'.88 S 141° 32'.60 E), has been altered to 19M.

**Chart temporarily affected - Aus 140 - Aus 348 - Aus 349**

**153(T)/2023 AUSTRALIA - VICTORIA - Point Cook - Port Phillip - Buoy restored**  
*Former Notice - 79(T)/2023 is cancelled*  
Parks Victoria Notice 63/2023

Cancel this notice on receipt.

**Chart formerly affected - Aus 143 - Aus 155**

**154(T)/2023 AUSTRALIA - VICTORIA - Port Campbell - Subsea operations southwards**  
Beach Energy Limited

Vessel *Skandi Acergy* and a ROV is conducting subsea construction operations in an area bounded by the following positions:

39° 13'.48 S 142° 49'.60 E  
39° 15'.06 S 142° 54'.21 E  
39° 13'.62 S 142° 55'.12 E  
39° 11'.52 S 142° 51'.67 E.

Mariners are advised to navigate with caution and to keep clear of the area.

**Chart temporarily affected - Aus 349**

**155(T)/2023 AUSTRALIA - VICTORIA - Port Campbell - Subsea operations southwards**  
*Former Notice - 113(T)/2023 is cancelled*  
Beach Energy Limited

Cancel this notice on receipt.

**Chart formerly affected - Aus 349 - Aus 787**

**156(T)/2023 AUSTRALIA - VICTORIA - Port Campbell to Cape Woolamai - Subsea operations southwards**  
Beach Energy Limited

Vessel *MMA Coral* and a ROV are conducting inspection works on subsea infrastructure between the following positions:

38° 38'.08 S 142° 58'.56 E

39° 14'.24 S 142° 54'.12 E

and;

38° 33'.54 S 145° 29'.22 E

39° 50'.43 S 145° 49'.01 E.

Mariners are advised to navigate with caution in the area.

**Chart temporarily affected - Aus 349 - Aus 487 - Aus 801**

**157(T)/2023 AUSTRALIA - VICTORIA - Port Campbell to Cape Woolamai - Subsea operations southwards**

*Former Notice* - 80(T)/2023 is cancelled

Beach Energy Limited

Cancel this notice on receipt.

**Chart formerly affected - Aus 349 - Aus 487 - Aus 787 - Aus 801**

**158(T)/2023 AUSTRALIA - VICTORIA - Port Fairy - Light restored**

*Former Notice* - 328(T)/2020 is cancelled

Maritime Safety Victoria

Cancel this notice on receipt.

**Chart formerly affected - Aus 141 - Aus 349**

**159(T)/2023 AUSTRALIA - VICTORIA - Port Fairy - Light buoy restored**

*Former Notice* - 578(T)/2021 is cancelled

Maritime Safety Victoria

Cancel this notice on receipt.

**Chart formerly affected - Aus 141**

**160(T)/2023 AUSTRALIA - VICTORIA - Port Fairy Bay - Scientific instrument**

Maritime Safety Victoria Notice 127(T)/2019

A special spherical light buoy, *Fl. Y. 2-5s* exists in position 38° 22'.91 S 142° 17'.23 E.

**Chart temporarily affected - Aus 349**

**161(T)/2023 AUSTRALIA - VICTORIA - Port Fairy Bay - Scientific instrument**

*Former Notice* - 678(T)/2019 is cancelled

Maritime Safety Victoria Notice 127(T)/2019

Cancel this notice on receipt.

**Chart formerly affected - Aus 141 - Aus 349**

**162(T)/2023 AUSTRALIA - VICTORIA - Port Phillip - South Channel - Shoaling; virtual AIS**  
 Ports Victoria Notice 324(T)/2022

Shoaling exists in the South Channel and is marked by special virtual AIS as follows:

| <i>Position</i>            | <i>Remarks</i> |
|----------------------------|----------------|
| 38° 17'.64 S 144° 41'.14 E | TB3            |
| 38° 17'.75 S 144° 41'.65 E | TB4            |
| 38° 18'.05 S 144° 43'.26 E | TB5            |
| 38° 18'.20 S 144° 44'.38 E | TB6            |
| 38° 19'.07 S 144° 48'.63 E | TB7            |
| 38° 19'.74 S 144° 54'.08 E | TB8.           |

Vessels with a draught greater than 13.5m are advised to navigate as follows:

**Inbound** north of TB3 and TB4 and south of TB5, TB6, TB7 and TB8  
**Outbound** south of TB8, TB7 and TB6 and north of TB5, TB3 and TB4.

Mariners are advised to navigate with caution in the area.

**Chart temporarily affected - Aus 143 - Aus 144**

**163(T)/2023 AUSTRALIA - VICTORIA - Port Phillip - South Channel - Shoaling; virtual AIS**  
 Former Notice - 852(T)/2022 is cancelled  
 Ports Victoria Notice 324(T)/2022

Cancel this notice on receipt.

**Chart formerly affected - Aus 143 - Aus 144 - Aus 788**

**164(T)/2023 AUSTRALIA - VICTORIA - Port Phillip - Half Moon Bay - Light unlit**  
 Parks Victoria Notice 81(T)/2023

The light, *Fl.5s 6m 3M* (37° 58'.04 S 145° 00'.48 E), is unlit.

**Chart temporarily affected - Aus 143 - Aus 155**

**165(T)/2023 AUSTRALIA - VICTORIA - Seaspray - Platforms relit southwards**  
 Former Notices - 750(T)/2022, 752(T)/2022 are cancelled  
 Esso Australia Pty Ltd

Cancel this notice on receipt.

**Chart formerly affected - Aus 357 - Aus 487 - Aus 4601 (INT 601)**

**166(T)/2023 AUSTRALIA - VICTORIA - Western Port - North Arm - Buoy restored**  
 Former Notice - 48(T)/2023 is cancelled  
 Parks Victoria Notice 55/2023

Cancel this notice on receipt.

**Chart formerly affected - Aus 151**

**167(T)/2023 AUSTRALIA - TASMANIA - King Island - Grassy Harbour - Platform, submarine cable, prohibited area**  
 Marine and Safety Tasmania Notice M19/2021

A lit platform, *F*, exists in position 40° 03'.97 S 144° 03'.53 E.

A submarine power cable exists between positions 40° 03'.97 S 144° 03'.53 E and 40° 03'.91 S 144° 03'.53 E.

An entry prohibited area, with radius 125m, exists centred on position 40° 03'.97 S 144° 03'.53 E.

Mariners are advised to navigate with caution in the area.

**Chart temporarily affected - Aus 179**



**168(T)/2023 AUSTRALIA - TASMANIA - King Island - Grassy Harbour - Platform, submarine cable, prohibited area**  
*Former Notice - 177(T)/2021 is cancelled*  
 Marine and Safety Tasmania Notice M19/2021

Cancel this notice on receipt.

**Chart formerly affected - Aus 178**

**169(P)/2023 AUSTRALIA - TASMANIA - Rocky Cape to East Sandy Point - Shoaling**  
 Australian Hydrographic Office

Latest survey indicates shoaler depths than those charted may exist in an area bounded by the high water line and the following positions:

40° 42'.39 S 145° 05'.11 E  
 40° 45'. 45S 145° 20'.92 E  
 40° 56'. 19S 145° 49'.10 E  
 41° 04'. 76S 146° 11'.06 E  
 41° 06'. 47S 146° 28'.51 E  
 41° 01'. 97S 146° 42'.97 E  
 40° 56'. 62S 146° 55'.07 E  
 40° 39'. 89S 147° 58'.89 E.

Mariners are advised to navigate with caution in the area.

Electronic Navigation Charts (ENCs) have been updated, Paper Charts will be updated in due course.

**Chart which will be affected - Aus 163 - Aus 164 - Aus 167 - Aus 179 - Aus 487 - Aus 790 - Aus 798 - Aus 799 - Aus 800**

**170(T)/2023 AUSTRALIA - TASMANIA - Rocky Cape to East Sandy Point - Shoaling**  
*Former Notice - 410(P)/2022 is cancelled*  
 Australian Hydrographic Office

Cancel this notice on receipt.

**Chart formerly affected - Aus 163 - Aus 164 - Aus 167 - Aus 178 - Aus 179 - Aus 487 - Aus 790 - Aus 798 - Aus 799 - Aus 800**

**171(T)/2023 AUSTRALIA - TASMANIA - Round Hill Point to Rocky Cape - Scientific instruments northwards**  
 Maritime and Safety Tasmania Notice M60(T)/2023

Special light buoys, *Fl. Y. 3s*, exist in the following positions:

40° 19'.57 S 145° 21'.58 E  
 40° 29'.00 S 145° 28'.48 E  
 40° 33'.72 S 145° 31'.94 E  
 40° 35'.71 S 145° 33'.40 E  
 40° 38'.43 S 145° 35'.41 E  
 40° 40'.79 S 145° 37'.14 E  
 40° 42'.39 S 145° 26'.12 E  
 40° 43'.14 S 145° 38'.88 E  
 40° 47'.85 S 145° 42'.37 E  
 40° 51'.62 S 145° 56'.13 E  
 40° 52'.56 S 145° 45'.86 E  
 40° 57'.26 S 145° 49'.36 E.

**Chart temporarily affected - Aus 790 - Aus 799**

**172(P)/2023 AUSTRALIA - TASMANIA - Stanley Harbour - Shoaling**

Veris

Latest survey indicates shoaler depths than those charted may exist in an area bounded by the following positions:

40° 46'.03 S 145° 18'.78 E

40° 46'.33 S 145° 18'.67 E

40° 46'.22 S 145° 18'.28 E.

The most significant shoals are as follows:

| <i>Position</i>            | <i>Depth</i> |
|----------------------------|--------------|
| 40° 46'.19 S 145° 18'.20 E | 4.3m         |
| 40° 46'.27 S 145° 18'.16 E | 4.8m.        |

Mariners are advised to navigate with caution in the area.

Charts will be updated in due course.

**Chart which will be affected - Aus 790****173(T)/2023 AUSTRALIA - TASMANIA - Stanley Harbour - Shoaling***Former Notice - 302(P)/2022 is cancelled*

Veris

Cancel this notice on receipt.

**Chart formerly affected - Aus 178 - Aus 790**

## HYDROGRAPHIC REPORTS

| <i>Locality</i>          | <i>Report</i> | <i>Ship/Authority</i> | <i>Observer</i> |
|--------------------------|---------------|-----------------------|-----------------|
| WA-<br>Eighty Mile Beach | Obstructions  |                       | B Ellacott      |

*To accompany Australian Notice to Mariners 130/2023*

**ELECTRONIC NAVIGATIONAL CHART (ENC)**

Larger scale ENC content exists in this area. When using electronic navigation systems, certain vessels (e.g. restricted by depth or size) may benefit from the additional level of detail shown in the largest scale ENC product available.

*Note for chart Aus 790*

*To accompany Australian Notice to Mariners 130/2023*

**ELECTRONIC NAVIGATIONAL CHART (ENC)**

Larger scale ENC content exists in this area. When using electronic navigation systems, certain vessels (e.g. restricted by depth or size) may benefit from the additional level of detail shown in the largest scale ENC product available.

*Note for chart Aus 798*

*To accompany Australian Notice to Mariners 130/2023*

**ESTUARY AND RIVER ENTRANCES**

The crossing of coastal bars and entry to rivers and estuaries is potentially dangerous. Bars and entrances are dynamic in nature, hence the depth and preferred approach may vary. Leading beacons and other navigational aids may not always indicate the best approach. If mariners are unsure of the condition at a particular bar or entrance, local information should be sought prior to crossing.

*Note for chart Aus 790*

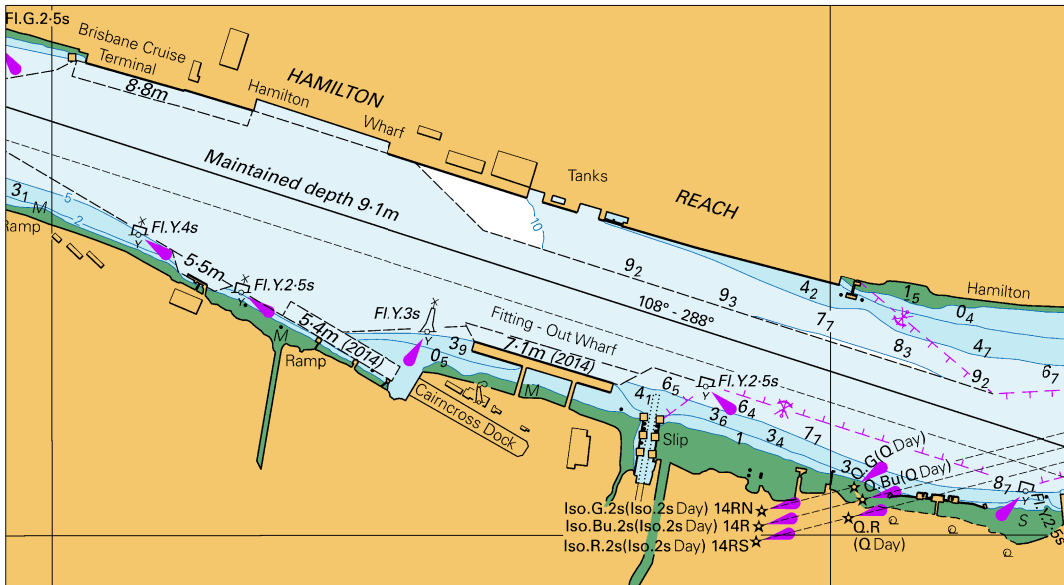
*To accompany Australian Notice to Mariners 130/2023*

**ELECTRONIC NAVIGATIONAL CHART (ENC)**

Larger scale ENC content exists in this area. When using electronic navigation systems, certain vessels (e.g. restricted by depth or size) may benefit from the additional level of detail shown in the largest scale ENC product available.

*Note for chart Aus 800*

*To accompany Australian Notice to Mariners 120/2023*

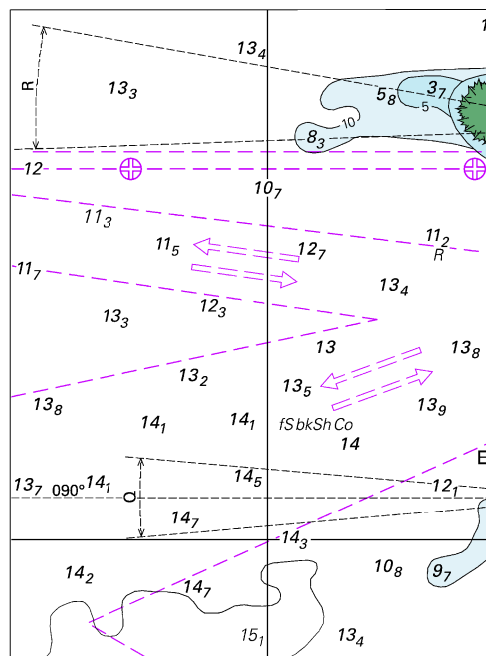


Block for chart Aus 237

© Commonwealth of Australia 2023

(140.2 x 76.7mm)

*To accompany Australian Notice to Mariners 123/2023*

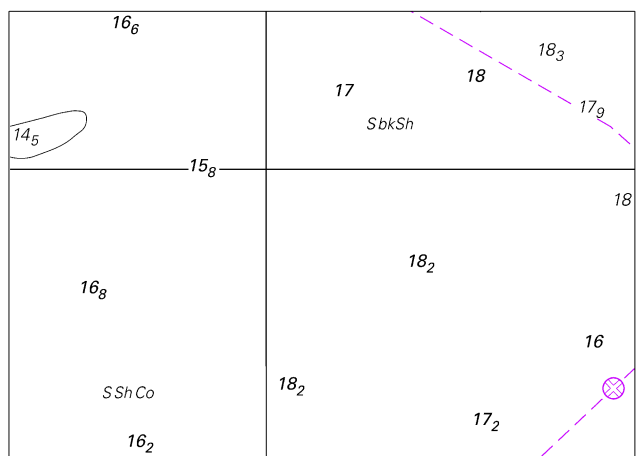


Block A for chart Aus 292

(63.4 x 86.1mm)

© Commonwealth of Australia 2023

To accompany Australian Notice to Mariners 123/2023

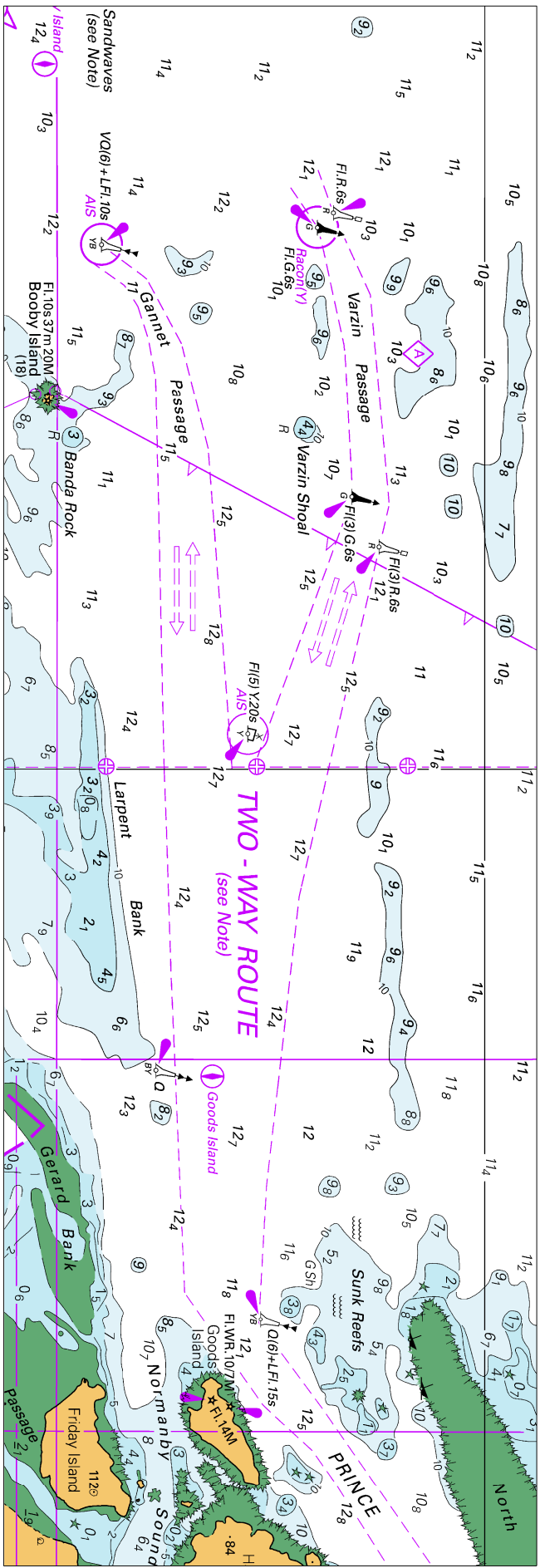


Block B for chart Aus 292

(82.7 x 59.2mm)

© Commonwealth of Australia 2023

To accompany Australian Notice to Mariners 123/2023



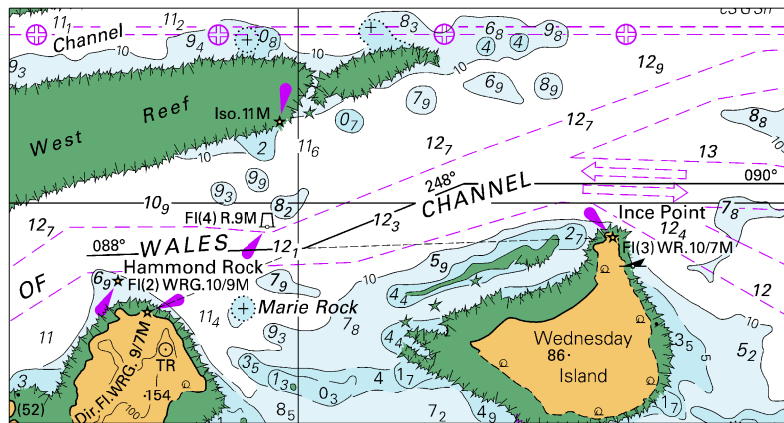
Block A for chart Aus 700

© Commonwealth of Australia 2023

(248.3 x 84.8mm)



To accompany Australian Notice to Mariners 123/2023

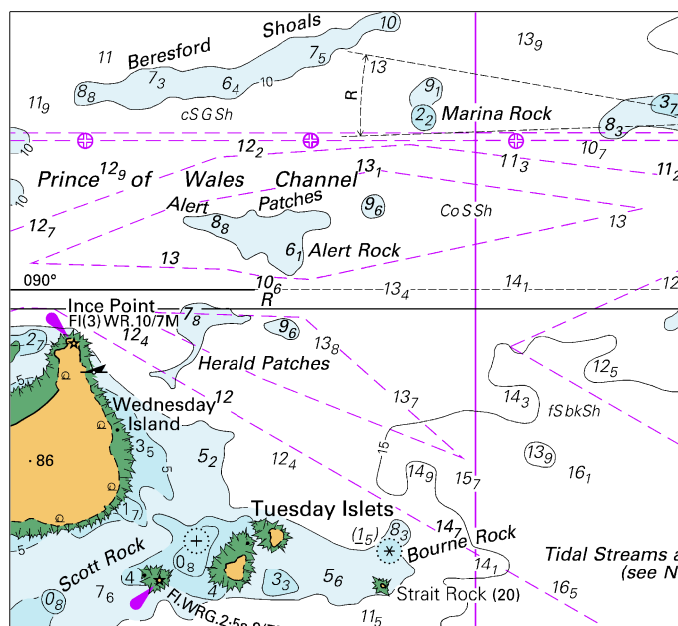


Block B for chart Aus 700

(103.5 x 54.9mm)

© Commonwealth of Australia 2023

To accompany Australian Notice to Mariners 123/2023



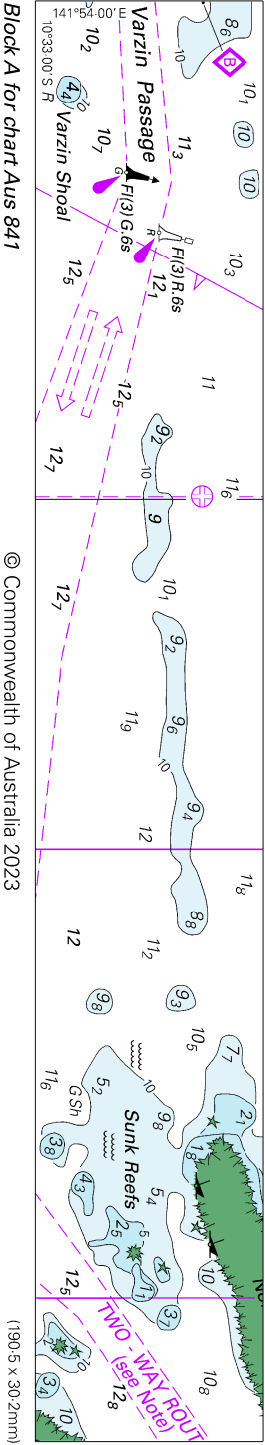
Block for chart Aus 839

(89.5 x 81.6mm)

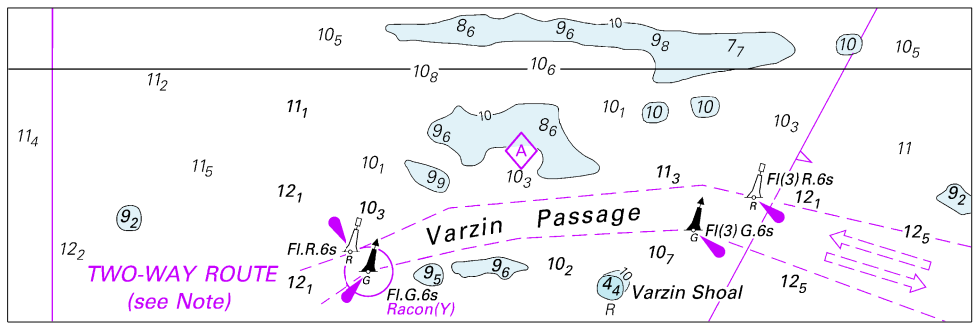
© Commonwealth of Australia 2023

(204.9 × 74.9mm)

To accompany Australian Notice to Mariners 123/2023



To accompany Australian Notice to Mariners 123/2023



To accompany Australian Notice to Mariners 130/2023

