



21 July 2023

Edition 15

# AUSTRALIAN NOTICES TO MARINERS

**Notices 596 - 640**

Published fortnightly by the Australian Hydrographic Office



Australian Notices to Mariners are the authority for correcting charts and publications published by the Australian Hydrographic Office covering Australia, Papua New Guinea, Solomon Islands, Australian Antarctic Territory and Timor-Leste.

Commodore S.T. DUNNE RAN  
*Hydrographer of Australia*

---

## SECTIONS.

- I. **Australian Notices to Mariners, including blocks and notes.**
- II. **Hydrographic Reports.**

## SUPPLEMENTS.

- I. **Tracings**
- II. **Cumulative List of Australian Notices to Mariners.**
- III. **Cumulative List of Temporary and Preliminary Australian Notices to Mariners.**
- IV. **Temporary and Preliminary Notices in force.**

---

© Commonwealth of Australia 2023

This work is copyright. Apart from any use permitted under the Copyright Act 1968, no part may be reproduced by any process, adapted, communicated or commercially exploited without prior written permission from The Commonwealth represented by the Australian Hydrographic Office.

## IMPORTANT NOTICE

This edition of Notices to Mariners includes all significant information affecting AHO products which the AHO has become aware of since the last edition. All reasonable efforts have been made to ensure the accuracy and completeness of the information, including third party information, on which these updates are based. The AHO regards third parties from which it receives information as reliable, however the AHO cannot verify all such information and errors may therefore exist. The AHO does not accept liability for errors in third party information.

---

## GENERAL INSTRUCTIONS

The substance of these notices should be inserted on the charts affected.

Bearings are referred to the true compass and are reckoned clockwise from North; those relating to lights are given as seen by an observer from seaward.

Positions quoted in notices relate to WGS84 which is the horizontal datum for all charts produced by the Australian Hydrographic Office.

The range quoted for a light is its nominal range.

Depths are with reference to the chart datum of each chart. Heights are above mean high water springs or mean higher high water, as appropriate.

The capital letter (P) or (T) after the number of any notice denotes a preliminary or temporary notice respectively, which are contained separately at the end of the permanent notices.

---

## REPORTING OF DANGERS

Mariners are particularly requested to notify the AUSTRALIAN HYDROGRAPHIC OFFICE, Locked Bag 8801 Wollongong, NSW 2500 (e-mail [datacentre@hydro.gov.au](mailto:datacentre@hydro.gov.au) or, alternatively by filling in and submitting the [Hydrographic Notes](#) forms located on the web site – [www.hydro.gov.au](http://www.hydro.gov.au)), immediately on the discovery of new dangers or suspected dangers to navigation. For changes or defects in aids to navigation notify AusSAR (Fax 02-6230 6868 or email [rccaus@amsa.gov.au](mailto:rccaus@amsa.gov.au)).

---

## AUTHORISED USE

Copies of Australian notices are available free of charge from the Australian Hydrographic Office (AHO) website ([www.hydro.gov.au](http://www.hydro.gov.au)) and through the eNotices (email) service ([www.hydro.gov.au/enotices/enotices.htm](http://www.hydro.gov.au/enotices/enotices.htm)).

Individual Notices may be copied for the purpose of inserting Notice substance on official charts and publications. Paper copies may be printed by chart agents and distributed to customers on a cost recovery basis. Participating chart agents are listed on the AHO website as providing a 'Paper Notices to Mariners' service ([www.hydro.gov.au/webapps/jsp/agents/agents-list.jsp](http://www.hydro.gov.au/webapps/jsp/agents/agents-list.jsp)). Copies of the notices may not be sold for profit without prior written agreement.

## NUMERICAL INDEX OF NOTICES TO MARINERS

### Edition No 15

Notices	Aus Chart, INT Chart, ENC Cell, AHP, BA Pubs
596	SLB 102
597	Aus 799, PNG 673
598	Aus 806
599	Aus 816, 817
600	Aus 823
601	Aus 236, 815
602	Aus 59
603	Aus 57, 60, 327, 742
604	Aus 117
605	Aus 74
606	Aus 4070, 4071, INT 70, 71
607(T)	Aus 813
608(T)	Aus 198
609(T)	Aus 268, 825, 826
610(T)	Aus 245, 246
611(T)	Aus 367, 821, 824
612(T)	Aus 827, 828
613(T)	Aus 250
614(T)	Aus 250
615(T)	Aus 251, 252, 254, 824
616(T)	Aus 252, 253, 824, 825
617(T)	Aus 260, 367, 490, 822
618(T)	Aus 248, 260, 367, 490, 820, 822
619(T)	Aus 248, 367, 490, 820, 822
620(T)	Aus 490, 613, 4602, 4604, INT 602, 604
621(P)	Aus 20, 720
622(T)	Aus 26
623(T)	Aus 73
624(T)	Aus 84
625(T)	Aus 332
626(T)	Aus 332
627(T)	Aus 324
628(T)	Aus 746
629(T)	Aus 117
630(T)	Aus 118
631(T)	Aus 336
632(T)	Aus 485, 781
633(T)	Aus 357, 487
634(T)	Aus 357, 487
635(T)	Aus 357
636(T)	Aus 143, 155
637(T)	Aus 143, 155
638(T)	Aus 171, 796, 797
639(T)	Aus 171, 173
640(T)	SLB 303, 304

## NUMERICAL INDEX OF CHARTS AFFECTED

### Edition No 15

Aus Chart	Notices
Aus 20	621(P)
Aus 26	622(T)
Aus 57	603
Aus 59	602
Aus 60	603
Aus 73	623(T)
Aus 74	605
Aus 84	624(T)
Aus 117	604, 629(T)
Aus 118	630(T)
Aus 143	636(T), 637(T)
Aus 155	636(T), 637(T)
Aus 171	638(T), 639(T)
Aus 173	639(T)
Aus 198	608(T)
Aus 236	601
Aus 245	610(T)
Aus 246	610(T)
Aus 248	618(T), 619(T)
Aus 250	613(T), 614(T)
Aus 251	615(T)
Aus 252	615(T), 616(T)
Aus 253	616(T)
Aus 254	615(T)
Aus 260	617(T), 618(T)
Aus 268	609(T)
Aus 324	627(T)
Aus 327	603
Aus 332	625(T), 626(T)
Aus 336	631(T)
Aus 357	633(T), 634(T), 635(T)
Aus 367	611(T), 617(T), 618(T), 619(T)
Aus 485	632(T)
Aus 487	633(T), 634(T)
Aus 490	617(T), 618(T), 619(T), 620(T)
Aus 613	620(T)
Aus 720	621(P)
Aus 742	603
Aus 746	628(T)
Aus 781	632(T)
Aus 796	638(T)
Aus 797	638(T)
Aus 799	597
Aus 806	598
Aus 813	607(T)
Aus 815	601
Aus 816	599
Aus 817	599
Aus 820	618(T), 619(T)
Aus 821	611(T)
Aus 822	617(T), 618(T), 619(T)
Aus 823	600
Aus 824	611(T), 615(T), 616(T)
Aus 825	609(T), 616(T)

Aus Chart	Notices
Aus 826	609(T)
Aus 827	612(T)
Aus 828	612(T)
Aus 4070	606
Aus 4071	606
Aus 4602	620(T)
Aus 4604	620(T)
PNG 673	597
SLB 102	596
SLB 303	640(T)
SLB 304	640(T)

INT Chart	Notices
INT 70	606
INT 71	606
INT 602	620(T)
INT 604	620(T)

**596 AUSTRALIA - Products - New Charts, New Editions, Withdrawn Charts**

Australian Hydrographic Office

**New Charts**

Chart	Title and Geographical limits	Scale	Publication Date	Remarks
NIL				

**New Electronic Navigation Chart (Aus ENC)**

Cell Name	Title	Publication Date	Remarks
NIL			

**New Editions and Withdrawn Charts**

Chart	Title	Scale	Publication Date	Remarks
SLB 102 (Edition 5)	South Pacific Ocean - Solomon Islands - Plans in the New Georgia Group Plans: Lever Harbour Ringgi Cove Port Noro Gizo Harbour and Approaches Blackett Strait	1:7 500 1:15 000 1:20 000 1:25 000 1:50 000	21 July 2023	New edition with general updating throughout; including new bathymetric data in Gizo Harbour and Approaches. <b>Chart SLB 102 Edition 4 dated 9 December 2022 is now superseded and must be withdrawn from use.</b>

**Chart permanently withdrawn**

Charts listed above as withdrawn no longer meet chart carriage requirements and should be marked as "superseded" and replaced with the new chart/ new edition listed prior to passage through the area covered by the new chart.

When placing orders with a chart agent between notice of forthcoming edition and its publication, mariners should advise whether their order pertains to the current edition or the new edition.

For further details refer to the AHO website at [www.hydro.gov.au](http://www.hydro.gov.au) for new edition and new chart stock arrival information.

**597 AUSTRALIA - Products - New Charts and New Editions to be published shortly**

Australian Hydrographic Office

**New Charts to be published shortly**

Chart	Title	Scale	Remarks
NIL			

**New Editions to be published shortly**

Chart	Title	Scale	Remarks
PNG 673	Papua New Guinea - New Britain - North Coast - Dampier Strait	1:75 000	New edition with general updating throughout; including new bathymetric data.

**Charts to be withdrawn without replacement 1 September 2023**

Chart	Title	Scale	Remarks
Aus 799 Edition 1	Australia - Tasmania - Stony Head to Rocky Cape	1:150 000	14 June 1996  Paper chart rationalisation.

**598 AUSTRALIA - NEW SOUTH WALES - Kangarutha Point - Light**

Transport for NSW

**Aus 806 [551/2022]**

Amend	light to <i>Ldg 2Fl.Bu.3s</i>	36° 44'.3 S	149° 58'.9 E
-------	-------------------------------	-------------	--------------

**599 AUSTRALIA - QUEENSLAND - Fraser Island - Nomenclature**  
Queensland Government

**Aus 816** [549/2023]

Replace name, Fraser Island, with name, *K'gari*

25° 21'.2 S

153° 04'.3 E

**Aus 817** [549/2023]

Replace name, Fraser Island, with name, *K'gari*

25° 43'.3 S

152° 47'.0 E

**600 AUSTRALIA - QUEENSLAND - Mackay - Navline**  
UKHO

**Aus 823** [224/2022]

Insert accompanying block

21° 04'.0 S

149° 19'.0 E

**601 AUSTRALIA - QUEENSLAND - North West Channel to Pumicestone Channel - Coastline; intertidal; light beacon**

*Former Notice - 897(T)/2022 is cancelled*

Navionics , Maritime Safety Queensland

**Aus 236** [521/2023]

Insert accompanying block

26° 49'.2 S

153° 07'.6 E

**Aus 815** [470/2023]

Insert accompanying block

26° 47'.5 S

153° 06'.0 E

**602 AUSTRALIA - WESTERN AUSTRALIA - Dampier - Depths**  
UKHO

**Aus 59** [556/2023]

Replace depth, 8<sub>2</sub>m, with depth, 7<sub>2</sub>m

20° 36'.96 S

116° 44'.83 E

**603 AUSTRALIA - WESTERN AUSTRALIA - Dampier - Port limit; VTS limit**  
Pilbara Ports Authority

**Aus 57 [348/2023]**

Insert	magenta dashed line, between	20° 20'.00 S	116° 36'.00 E
		20° 19'.17 S	116° 32'.40 E
		20° 19'.17 S	116° 28'.07 E
		20° 25'.75 S	116° 28'.07 E
		20° 25'.75 S	116° 36'.00 E
Amend	legend to <i>Dampier Port/VTS Limit</i>	20° 19'.0 S	116° 43'.6 E
	legend to <i>Dampier Port/VTS/Pilotage Limit</i>	20° 33'.2 S	116° 41'.2 E
	legend to <i>Dampier Port/VTS Limit</i>	20° 37'.6 S	116° 31'.7 E
	legend to <i>Dampier Port/VTS Limit</i>	20° 39'.5 S	116° 30'.4 E
Delete	magenta dashed line, between	20° 20'.0 S	116° 36'.0 E
		20° 25'.7 S	116° 36'.0 E

**Aus 60 [263/2023]**

Amend	legend to <i>Dampier Port/VTS Limit</i>	20° 38'.15 S	116° 38'.81 E
-------	---	--------------	---------------

**Aus 327 [524/2023]**

Insert	magenta dashed line, between	20° 20'.00 S	116° 36'.00 E
		20° 19'.17 S	116° 32'.40 E
		20° 19'.17 S	116° 28'.07 E
		20° 25'.75 S	116° 28'.07 E
		20° 25'.75 S	116° 36'.00 E
Amend	legend to <i>Dampier Port/VTS Limit</i>	20° 19'.2 S	116° 44'.2 E
	legend to <i>Dampier Port/VTS Limit</i>	20° 39'.3 S	116° 30'.5 E
Delete	magenta dashed line, between	20° 20'.0 S	116° 36'.0 E
		20° 25'.7 S	116° 36'.0 E

**Aus 742 [554/2023]**

Insert	magenta dashed line with legend, <i>Dampier Port/VTS Limit</i> , between	20° 20'.00 S	116° 36'.00 E
		20° 19'.17 S	116° 32'.40 E
		20° 19'.17 S	116° 28'.07 E
		20° 25'.75 S	116° 28'.07 E
		20° 25'.75 S	116° 36'.00 E
Amend	legend to <i>Dampier Port/VTS Limit</i>	20° 37'.7 S	116° 31'.3 E
Delete	magenta dashed line and legend, <i>Dampier Port Limit</i> , between	20° 20'.0 S	116° 36'.0 E
		20° 25'.7 S	116° 36'.0 E

**604 AUSTRALIA - WESTERN AUSTRALIA - Fremantle - Anchorage**  
Fremantle Ports

**Aus 117 [352/2023]**

Insert	anchor berth, design <i>OEA</i> , with 300m radius swinging circle, centred on	32° 06'.462 S	115° 42'.393 E
--------	--	---------------	----------------

**605 AUSTRALIA - WESTERN AUSTRALIA - Shark Bay - Denham Channel to Slope Island - Depths**  
Shark Bay Salt

**Aus 74 [980/2022]**

Insert	accompanying block A	25° 54'.3 S	113° 15'.3 E
	accompanying block B	26° 04'.4 S	113° 25'.5 E

**Aus 74 (Slope Island) [980/2022]**

Insert	accompanying block C	26° 05'.37 S	113° 25'.30 E
--------	----------------------	--------------	---------------

**606**                    **INDIAN OCEAN - Cocos (Keeling) Islands - Light buoy northwards**  
JAMSTEC

**Aus 4070 (INT 70) [59/2023]**  
Delete            light buoy

8° 13'.2 S            95° 06'.7 E

**Aus 4071 (INT 71) [59/2023]**  
Delete            light buoy

8° 13'.2 S            95° 06'.7 E



**607(T)/2023 AUSTRALIA - NEW SOUTH WALES - Ballina - Light buoy restored**

*Former Notice - 482(T)/2023 is cancelled*  
NSW Department of Primary Industries

Cancel this notice on receipt.

**Chart formerly affected - Aus 813****608(T)/2023 AUSTRALIA - NEW SOUTH WALES - Botany Bay - Kurnell to La Perouse - Harbour works**

Port Authority of New South Wales Notice 16/2023

Works associated with the construction of the Kamay Ferry Wharves are in progress in the vicinity of positions 33° 59'.21 S 151° 13'.68 E and 34° 00'.14 S 151° 13'.01 E.

An exclusion zone exists in the works area and will be marked by special buoys.

Anchoring is prohibited in the vicinity of position 34° 00'.28 S 151° 12'.83 E.

Mariners are advised to navigate with caution in the area.

**Chart temporarily affected - Aus 198****609(T)/2023 AUSTRALIA - QUEENSLAND - Bowen - Military exercise**

Maritime Safety Queensland Notice 253(T)/2023

During the period 20 June to 19 August 2023, a military exercise will be conducted in an area bounded by the coast and the following positions:

20° 00'.89 S 148° 16'.10 E  
20° 00'.17 S 148° 17'.79 E  
19° 59'.42 S 148° 18'.79 E  
19° 58'.19 S 148° 18'.58 E  
19° 58'.79 S 148° 16'.87 E  
19° 59'.96 S 148° 15'.82 E.

Mariners are advised that the area is an exclusion zone and a 500m clearance is requested around any military vessel.

**Chart temporarily affected - Aus 268 - Aus 825 - Aus 826****610(T)/2023 AUSTRALIA - QUEENSLAND - Gladstone - Beacon replacement works completed**

*Former Notice - 442(T)/2023 is cancelled*  
Maritime Safety Queensland

Cancel this notice on receipt.

**Chart formerly affected - Aus 245 - Aus 246****611(T)/2023 AUSTRALIA - QUEENSLAND - Great Barrier Reef - Hydrographers Passage - Military exercise**

Maritime Safety Queensland Notice 258(T)/2023

During the period 22 July to 4 August 2023 and 10 to 14 August 2023, a military exercise will be conducted in an area bounded by the following positions:

20° 55'.30 S 149° 56'.78 E  
20° 51'.13 S 150° 03'.89 E  
20° 46'.81 S 149° 59'.50 E  
20° 50'.93 S 149° 52'.64 E  
and;  
20° 47'.12 S 149° 49'.20 E  
20° 44'.26 S 149° 53'.27 E  
20° 42'.82 S 149° 56'.04 E  
20° 33'.58 S 149° 49'.03 E  
20° 39'.81 S 149° 42'.83 E.

Mariners are advised to navigate with caution in the area. A 500m clearance is requested around any military vessel.

**Chart temporarily affected - Aus 367 - Aus 821 - Aus 824**

**612(T)/2023 AUSTRALIA - QUEENSLAND - Halifax Bay - Military exercise**

Department of Defence

During the period 27 to 28 July 2023, a military exercise will be conducted in an area bounded by the following positions:

18° 48'.00 S 146° 26'.01 E  
 18° 48'.04 S 146° 29'.91 E  
 18° 45'.46 S 146° 29'.87 E  
 18° 40'.04 S 146° 29'.23 E  
 18° 37'.86 S 146° 27'.69 E  
 18° 42'.16 S 146° 17'.95 E  
 18° 44'.80 S 146° 17'.14 E.

Mariners are advised to navigate with caution in the area. A 500m clearance is requested around any military vessel.

**Chart temporarily affected - Aus 827 - Aus 828**

**613(T)/2023 AUSTRALIA - QUEENSLAND - Hay Point - Obstruction; light buoy**

Maritime Safety Queensland Notice 312(T)/2023

An obstruction marked by a special light buoy, *Fl. Y. 6s*, exists in position 21° 17'.40 S 149° 18'.14 E.

**Chart temporarily affected - Aus 250**

**614(T)/2023 AUSTRALIA - QUEENSLAND - Mackay - Obstruction; light buoy**

Maritime Safety Queensland Notice 311(T)/2023

An obstruction marked by a special light buoy, *Fl. Y. 6s*, exists in position 21° 06'.63 S 149° 13'.90 E.

**Chart temporarily affected - Aus 250**

**615(T)/2023 AUSTRALIA - QUEENSLAND - Midge Point - Military exercise northeastwards**

Maritime Safety Queensland Notice 259(T)/2023

During the period 24 to 28 July 2023, a military exercise will be conducted in an area bounded by the following positions:

20° 53'.08 S 148° 47'.72 E  
 20° 37'.47 S 149° 18'.82 E  
 20° 22'.27 S 149° 10'.07 E  
 20° 37'.88 S 148° 39'.03 E.

Mariners are advised to navigate with caution in the area. A 500m clearance is requested around any military vessel.

**Chart temporarily affected - Aus 251 - Aus 252 - Aus 254 - Aus 824**

**616(T)/2023 AUSTRALIA - QUEENSLAND - Pioneer Rocks - Obstruction; light buoy**

Maritime Safety Queensland Notice 307(T)/2023

An obstruction marked by a special light buoy, *Fl. Y. 3s*, exists in position 20° 13'.6 S 148° 44'.7 E.

**Chart temporarily affected - Aus 252 - Aus 253 - Aus 824 - Aus 825**

**617(T)/2023 AUSTRALIA - QUEENSLAND - Shoalwater Bay - Live firing**

Department of Defence

Live firing will be conducted in the marine component of the Shoalwater Bay training area during the period 22 to 24 July 2023.

A marine danger area extends to all internal waters bounded by the following positions:

22° 14'.05 S 150° 30'.88 E  
 22° 05'.53 S 150° 40'.44 E  
 22° 05'.55 S 150° 45'.75 E  
 22° 12'.72 S 150° 49'.40 E  
 22° 15'.97 S 150° 43'.88 E  
 22° 17'.59 S 150° 31'.96 E  
 22° 24'.81 S 150° 26'.76 E  
 22° 17'.99 S 150° 23'.09 E  
 22° 13'.26 S 150° 25'.31 E.

All waters, creeks, beaches and other areas within the declared marine danger area are not available for access.

There will be a safe anchorage available at Freshwater, Port Clinton, West Water Port Clinton, South Arm Port Clinton and Pearl Bay.

Mariners are advised to keep clear of this area throughout the above times.

**Chart temporarily affected - Aus 260 - Aus 367 - Aus 490 - Aus 822**

**618(T)/2023 AUSTRALIA - QUEENSLAND - Shoalwater Bay - Military exercise**

Department of Defence

During the period 1 to 4 August 2023, a military exercise will be conducted in an area bounded by the following positions:

22° 06'.55 S 150° 02'.21 E  
 22° 09'.63 S 150° 30'.44 E  
 22° 19'.66 S 150° 45'.03 E  
 22° 42'.29 S 150° 55'.99 E  
 22° 42'.03 S 150° 17'.45 E.

Mariners are advised to navigate with caution in the area. A 500m clearance is requested around any military vessel.

**Chart temporarily affected - Aus 248 - Aus 260 - Aus 367 - Aus 490 - Aus 820 - Aus 822**

**619(T)/2023 AUSTRALIA - QUEENSLAND - Shoalwater Bay - Military exercise completed***Former Notice - 528(T)/2023 is cancelled*

Department of Defence

Cancel this notice on receipt.

**Chart formerly affected - Aus 248 - Aus 367 - Aus 490 - Aus 820 - Aus 822**

**620(T)/2023 AUSTRALIA - CORAL SEA - Live firing**

Maritime Safety Queensland

During the period 22 to 24 July 2023, live firing will be conducted in an area bounded by the following positions:

20° 38'.0 S 152° 15'.0 E  
 20° 38'.0 S 154° 57'.0 E  
 19° 38'.0 S 154° 57'.0 E  
 19° 38'.0 S 152° 15'.0 E.

Mariners are advised to avoid transiting the area from 0001 hours on 22 July 2023 to 2359 hours on 24 July 2023.

**Chart temporarily affected - Aus 490 - Aus 613 - Aus 4602 (INT 602) - Aus 4604 (INT 604)**

**621(P)/2023 AUSTRALIA - NORTHERN TERRITORY - Clarence Strait - Shoaling**

Australian Hydrographic Office

Latest survey indicates shoaler depths than those charted may exist in an area bounded by the following positions:

12° 03'.81 S 131° 15'.27 E  
 12° 01'.50 S 131° 23'.70 E  
 11° 50'.50 S 131° 36'.60 E  
 11° 42'.10 S 131° 38'.40 E  
 11° 42'.10 S 131° 27'.20 E  
 11° 55'.80 S 131° 11'.80 E  
 11° 59'.50 S 131° 10'.40 E.

Mariners are advised to navigate with caution in the area.

Charts will be updated in due course.

**Chart which will be affected - Aus 20 - Aus 720**

**622(T)/2023 AUSTRALIA - NORTHERN TERRITORY - Darwin - Bladin Point - Light beacon unlit**

Northern Territory Government Notice 58(T)/2022

The light beacon, *F.Bu & Fl.Y.2s* (12° 30'.47 S 130° 55'.27 E), is unlit.

**Chart temporarily affected - Aus 26**

**623(T)/2023 AUSTRALIA - WESTERN AUSTRALIA - Carnarvon - Gascoyne River - Teggs Channel - Dredging operations**

Department of Transport WA Notice 5747/2023

The dredge, *Ironheart*, is conducting dredging operations in Teggs Channel and the entrance to Gascoyne River.

A floating and submerged pipeline, marked by special light buoys, is connected to the dredge.

The dredge has deployed anchors marked by special light buoys.

The dredge will display appropriate lights and shapes and will monitor VHF Ch 16 and VHF Ch 74.

Mariners are required to contact the dredge before passing and to pass close to the dredge, rather than out near the anchors, while dredging is in progress.

A mooring marked by a special light buoy exists in position 24° 54'.02 S 113° 39'.09 E.

Temporary anchors marked by special light buoys exist in the vicinity of position 24° 53'.52 S 113° 37'.98 E.

Mariners are advised to navigate with caution in the area and keep well clear.

**Chart temporarily affected - Aus 73**

**624(T)/2023 AUSTRALIA - WESTERN AUSTRALIA - Jurien Bay - Dredging operations completed**

*Former Notice - 77(T)/2023 is cancelled*

Department of Transport WA

Cancel this notice on receipt.

**Chart formerly affected - Aus 84**

**625(T)/2023 AUSTRALIA - WESTERN AUSTRALIA - Kalbarri - Scientific instrument**

Department of Transport WA Notice 5748(T)/2023

A subsurface scientific instrument, 0.66m above the seabed, exists in position 27° 24'.70 S 114° 02'.79 E.

**Chart temporarily affected - Aus 332**

**626(T)/2023 AUSTRALIA - WESTERN AUSTRALIA - Kalbarri - Survey operations northwards**  
EGS Survey Pty Ltd

On or about 28 July 2023, MV *Inception*, with a towed array, will be conducting survey operations in an area bounded by the coast and the following positions:

27° 21'.56 S 114° 02'.01 E  
27° 22'.93 S 113° 55'.91 E  
27° 28'.12 S 113° 58'.21 E  
27° 26'.52 S 114° 04'.49 E.

Tide gauges will be deployed in positions 27° 26'.55 S 114° 04'.32 E and 27° 21'.63 S 114° 01'.73 E.

Mariners are advised to navigate with caution in the area. 0.13M clearance requested.

**Chart temporarily affected - Aus 332**

**627(T)/2023 AUSTRALIA - WESTERN AUSTRALIA - Lagrange Bay - Scientific instruments**  
Department of Transport WA Notice 5749(T)/2023

Subsurface scientific instruments exist in the following positions:

18° 35'.12 S 121° 44'.06 E  
18° 35'.54 S 121° 44'.98 E  
18° 35'.85 S 121° 45'.81 E  
18° 36'.01 S 121° 43'.89 E  
18° 36'.43 S 121° 46'.98 E  
18° 36'.48 S 121° 47'.17 E  
18° 36'.49 S 121° 42'.92 E  
18° 36'.57 S 121° 46'.91 E  
18° 36'.59 S 121° 45'.45 E  
18° 37'.00 S 121° 44'.32 E  
18° 37'.00 S 121° 46'.69 E  
18° 37'.05 S 121° 46'.95 E  
18° 37'.20 S 121° 46'.31 E  
18° 37'.25 S 121° 47'.09 E  
18° 37'.66 S 121° 45'.68 E  
18° 37'.81 S 121° 43'.16 E  
18° 38'.06 S 121° 44'.56 E  
18° 38'.53 S 121° 46'.45 E  
18° 38'.72 S 121° 45'.65 E  
18° 38'.83 S 121° 46'.83 E  
18° 39'.12 S 121° 44'.44 E  
18° 39'.15 S 121° 43'.16 E  
18° 39'.47 S 121° 46'.19 E  
18° 39'.76 S 121° 45'.30 E.

Mariners are advised to navigate with caution in the area.

**Chart temporarily affected - Aus 324**

**628(T)/2023 AUSTRALIA - WESTERN AUSTRALIA - Ningaloo Reef - Scientific instrument**  
Department of Transport WA Notice 5739(T)/2023

A special light buoy, *Fl.Y.2-5s*, exists in position 23° 08'.58 S 113° 44'.24 E.

**Chart temporarily affected - Aus 746**

**629(T)/2023 AUSTRALIA - WESTERN AUSTRALIA - South Fremantle - Scientific instruments westwards**  
Department of Transport WA Notice 5703(T)/2023

Subsurface scientific instruments, 1.2m below the surface, exist in positions 32° 04'.72 S 115° 44'.51 E and 32° 04'.93 S 115° 44'.02 E.

Mariners are advised to navigate with caution in the area.

**Chart temporarily affected - Aus 117**

**630(T)/2023 AUSTRALIA - WESTERN AUSTRALIA - Torbay to King George Sound - Scientific instruments**  
Department of Transport WA Notice 5742/2023

Scientific instruments marked by special light buoys, *Fl.Y.3s*, exist in the following positions:

35° 04'.92 S 117° 49'.18 E

35° 05'.38 S 117° 57'.75 E

35° 05'.45 S 117° 57'.76 E.

**Chart temporarily affected - Aus 118**

**631(T)/2023 AUSTRALIA - WESTERN AUSTRALIA - Wilson Head - Scientific instrument**  
Department of Transport WA Notice 5757(T)/2023

A special light buoy, *Fl.Y.2.5s*, exists in position 35° 02'.93 S 117° 21'.82 E.

**Chart temporarily affected - Aus 336**

**632(T)/2023 AUSTRALIA - SOUTH AUSTRALIA - Port Giles - Light beacon unlit eastwards**  
Department for Infrastructure and Transport SA Notice 38(T)/2023

The light beacon, *Fl.WR.4s 10/6M* (35° 01'.01 S 137° 52'.12 E), is unlit.

**Chart temporarily affected - Aus 485 - Aus 781**

**633(T)/2023 AUSTRALIA - VICTORIA - Cape Conran - Subsea operations southwards completed**  
*Former Notice - 541(T)/2023 is cancelled*  
Cooper Energy

Cancel this notice on receipt.

**Chart formerly affected - Aus 357 - Aus 487**

**634(T)/2023 AUSTRALIA - VICTORIA - Golden Beach - Scientific instruments southeastwards**  
RPS Group

Subsurface scientific instruments, 2m above seabed, exist in the following positions:

38° 23'.73 S 147° 42'.33 E

38° 26'.66 S 147° 27'.32 E

38° 36'.10 S 147° 49'.33 E.

Mariners are advised to navigate with caution in the area.

**Chart temporarily affected - Aus 357 - Aus 487**

**635(T)/2023 AUSTRALIA - VICTORIA - Golden Beach - Drill rig moved**  
*Former Notice - 587(T)/2023 is cancelled*  
MODU *Valaris 107*

Cancel this notice on receipt.

**Chart formerly affected - Aus 357**

**636(T)/2023 AUSTRALIA - VICTORIA - Port Phillip - Werribee South - Drill rig eastwards**  
MODU *Valaris 107*

Drill rig *Valaris 107* is moored in position 37° 59'.0 S 144° 46'.6 E.

**Chart temporarily affected - Aus 143 - Aus 155**

**637(T)/2023 AUSTRALIA - VICTORIA - Port Phillip - Mordialloc - Light unlit**  
Parks Victoria Notice 281(T)/2023

The light, *Fl.R.2s 3M* (38° 00'.78 S 145° 04'.98 E), is unlit.

**Chart temporarily affected - Aus 143 - Aus 155**

**638(T)/2023 AUSTRALIA - TASMANIA - Port Arthur - Scientific instruments**  
Marine and Safety Tasmania Notice M265(T)/2023

Subsurface scientific instruments, 5m below the surface, exist in the following positions:

43° 07'.38 S 147° 51'.83 E  
43° 07'.59 S 147° 51'.96 E  
43° 07'.71 S 147° 51'.99 E  
43° 07'.76 S 147° 51'.99 E  
43° 07'.77 S 147° 51'.67 E  
43° 07'.86 S 147° 51'.86 E  
43° 07'.88 S 147° 51'.80 E  
43° 08'.00 S 147° 52'.26 E  
43° 08'.00 S 147° 52'.34 E  
43° 08'.00 S 147° 52'.49 E  
43° 08'.00 S 147° 52'.78 E  
43° 08'.12 S 147° 52'.12 E  
43° 08'.14 S 147° 52'.12 E  
43° 08'.24 S 147° 52'.11 E  
43° 08'.46 S 147° 52'.01 E  
43° 09'.35 S 147° 52'.28 E  
43° 09'.41 S 147° 53'.55 E  
43° 10'.37 S 147° 51'.52 E.

Mariners are advised to navigate with caution in the area.

**Chart temporarily affected - Aus 171 - Aus 796 - Aus 797**

**639(T)/2023 AUSTRALIA - TASMANIA - River Derwent - Flowerpot Point - Kelp longlines; light buoys**  
*Former Notice - 513(T)/2023 is cancelled*  
Marine and Safety Tasmania Notice M214(T)/2023, M266(T)/2023

Subsurface kelp longlines exist in an area, marked by light buoys, bounded by the following positions:

43° 01'.24 S 147° 20'.24 E  
43° 01'.24 S 147° 20'.31 E  
43° 01'.04 S 147° 20'.31 E  
43° 01'.04 S 147° 20'.24 E.

Vessels not directly involved in the research activities are prohibited from entering the area.

Mariners are advised to navigate with caution in the area.

**Chart temporarily affected - Aus 171 - Aus 173**

**640(T)/2023 SOLOMON ISLANDS - Guadalcanal Island - Tana Matomba Point (Cape Esperance) - Light unlit**  
Solomon Islands Maritime Authority Notice 10/2023

The light, *Fl.10s 10m 10M* (9° 15'.10 S 159° 42'.79 E), is unlit.

**Chart temporarily affected - SLB 303 - SLB 304**

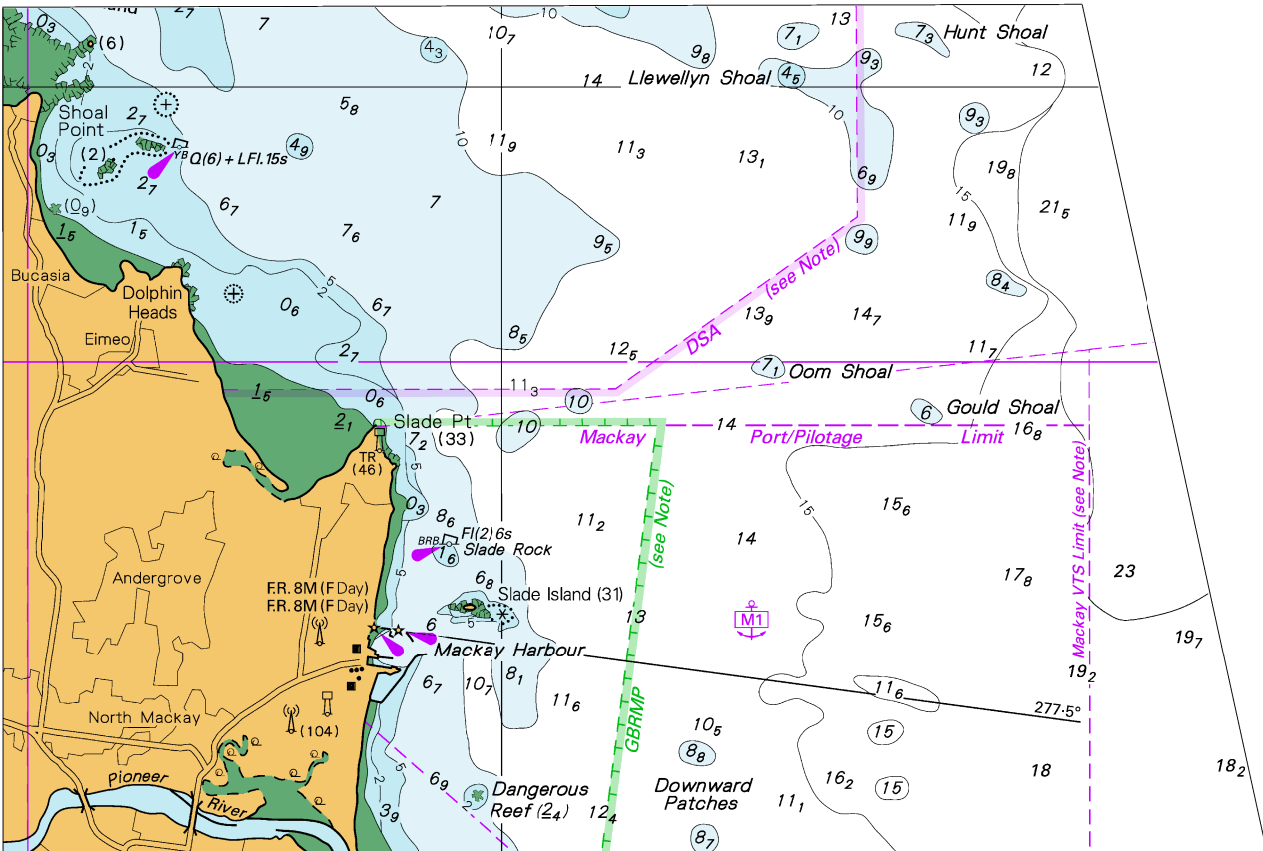
II

**HYDROGRAPHIC REPORTS**

NIL



*To accompany Australian Notice to Mariners 600/2023*

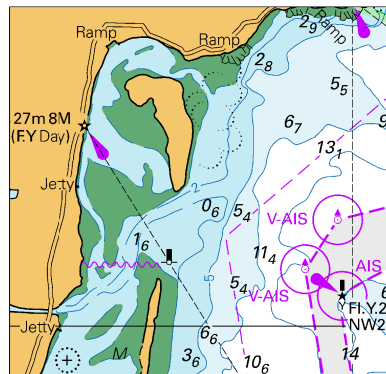


Block for chart Aus 823

© Commonwealth of Australia 2023

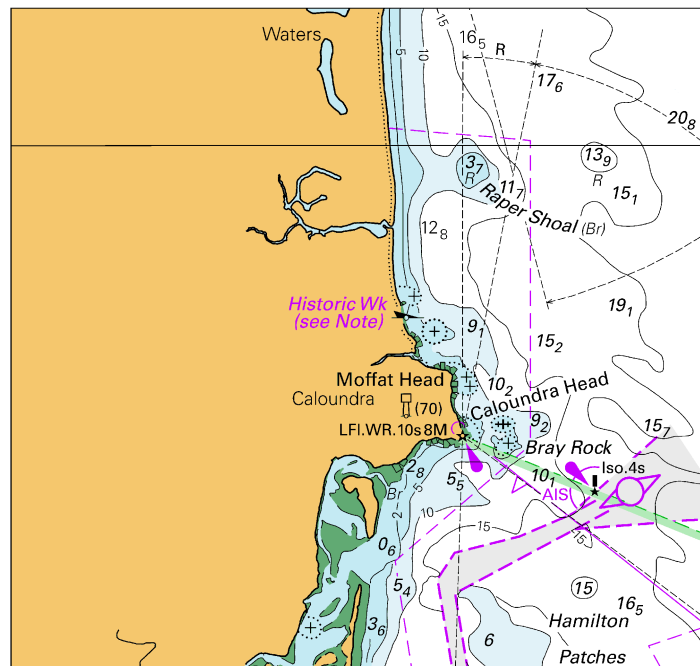
$$\left( \frac{142.0}{167.0} \times 112.1 \text{ mm} \right)$$

*To accompany Australian Notice to Mariners 601/2023*



**Block for chart Aus 236** (50.6 x 48.5mm)  
© Commonwealth of Australia 2023

To accompany Australian Notice to Mariners 601/2023

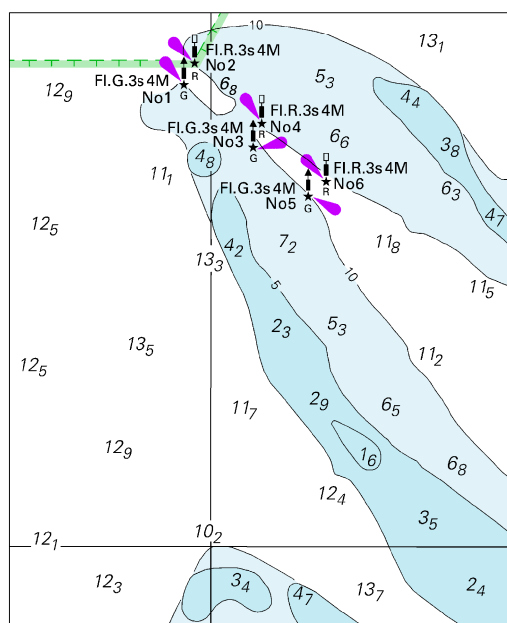


Block for chart Aus 815

(91.2 x 86.9mm)

© Commonwealth of Australia 2023

*To accompany Australian Notice to Mariners 605/2023*

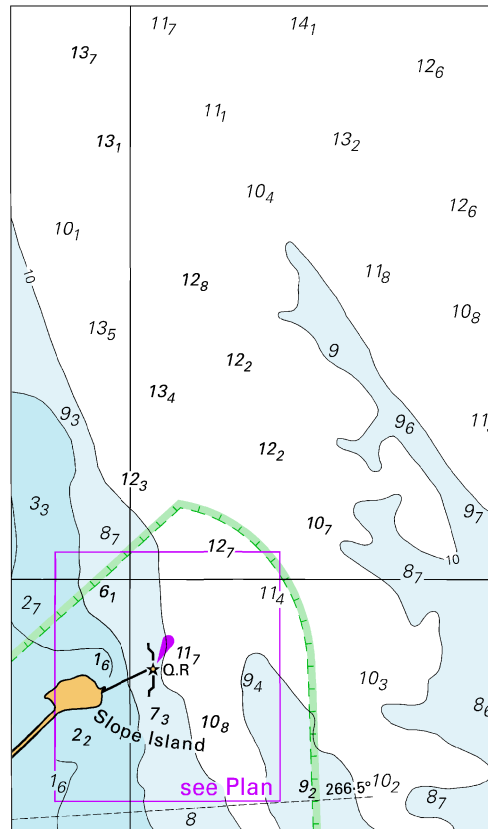


Block A for chart Aus 74

(66.1 x 81.0mm)

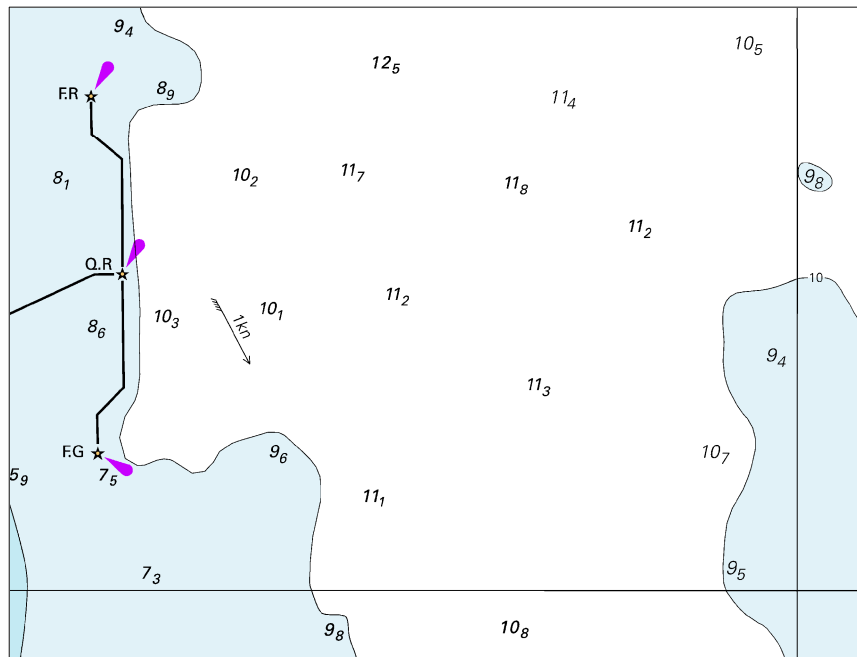
© Commonwealth of Australia 2023

To accompany Australian Notice to Mariners 605/2023



Block B for chart Aus 74 (64.2 x 109.2mm)  
© Commonwealth of Australia 2023

To accompany Australian Notice to Mariners 605/2023



Block C for chart Aus 74 © Commonwealth of Australia 2023

(112.9 x 86.1mm)