



14 April 2022

Edition 8

AUSTRALIAN NOTICES TO MARINERS

Notices 306 - 341

Published fortnightly by the Australian Hydrographic Office



Australian Notices to Mariners are the authority for correcting charts and publications published by the Australian Hydrographic Office covering Australia, Papua New Guinea, Solomon Islands, Australian Antarctic Territory and Timor-Leste.

Commodore S.T. DUNNE RAN
Hydrographer of Australia

SECTIONS.

- I. **Australian Notices to Mariners, including blocks and notes.**
- II. **Hydrographic Reports.**

SUPPLEMENTS.

- I. **Tracings**
- II. **Cumulative List of Australian Notices to Mariners.**
- III. **Cumulative List of Temporary and Preliminary Australian Notices to Mariners.**
- IV. **Temporary and Preliminary Notices in force.**

© Commonwealth of Australia 2022

This work is copyright. Apart from any use permitted under the Copyright Act 1968, no part may be reproduced by any process, adapted, communicated or commercially exploited without prior written permission from The Commonwealth represented by the Australian Hydrographic Office.

IMPORTANT NOTICE

This edition of Notices to Mariners includes all significant information affecting AHO products which the AHO has become aware of since the last edition. All reasonable efforts have been made to ensure the accuracy and completeness of the information, including third party information, on which these updates are based. The AHO regards third parties from which it receives information as reliable, however the AHO cannot verify all such information and errors may therefore exist. The AHO does not accept liability for errors in third party information.

GENERAL INSTRUCTIONS

The substance of these notices should be inserted on the charts affected.

Bearings are referred to the true compass and are reckoned clockwise from North; those relating to lights are given as seen by an observer from seaward.

Positions quoted in notices relate to WGS84 which is the horizontal datum for all charts produced by the Australian Hydrographic Office.

The range quoted for a light is its nominal range.

Depths are with reference to the chart datum of each chart. Heights are above mean high water springs or mean higher high water, as appropriate.

The capital letter (P) or (T) after the number of any notice denotes a preliminary or temporary notice respectively, which are contained separately at the end of the permanent notices.

REPORTING OF DANGERS

Mariners are particularly requested to notify the AUSTRALIAN HYDROGRAPHIC OFFICE, Locked Bag 8801 Wollongong, NSW 2500 (Fax 02-4223 6599, e-mail datacentre@hydro.gov.au or, alternatively by filling in and submitting the [Hydrographic Notes](#) forms located on the web site – www.hydro.gov.au), immediately on the discovery of new dangers or suspected dangers to navigation. For changes or defects in aids to navigation notify AusSAR (Fax 02-6230 6868 or email rccaus@amsa.gov.au).

AUTHORISED USE

Copies of Australian notices are available free of charge from the Australian Hydrographic Office (AHO) website (www.hydro.gov.au) and through the eNotices (email) service (www.hydro.gov.au/enotices/enotices.htm).

Individual Notices may be copied for the purpose of inserting Notice substance on official charts and publications. Paper copies may be printed by chart agents and distributed to customers on a cost recovery basis. Participating chart agents are listed on the AHO website as providing a 'Paper Notices to Mariners' service (www.hydro.gov.au/webapps/jsp/agents/agents-list.jsp). Copies of the notices may not be sold for profit without prior written agreement.

NUMERICAL INDEX OF NOTICES TO MARINERS

Edition No 8

Notices	Aus Chart, INT Chart, ENC Cell, AHP, BA Pubs
306	Products - New Charts, New Editions, Withdrawn Charts
307	Aus 722, 767, 798, 800
308	Aus 808
309	Aus 256, 827
310	Aus 236
311	Aus 813, 814
312	Aus 14
313	Aus 320
314	Aus 487, 798, 4644, INT 644
315	Aus 176, 793
316(T)	Aus 238
317(T)	Aus 819
318(T)	Aus 249, 250, 823, 824
319(T)	Aus 236
320(T)	Aus 236
321(T)	Aus 249, 823
322(T)	Aus 248, 260, 367, 490, 820, 822
323(T)	Aus 827, 828
324(T)	Aus 256, 827
325(T)	Aus 4, 301
326(T)	Aus 4604, 4620, 4621, INT 604, 620, 621, PNG 507, 508
327(T)	PNG 509, 512
328(T)	PNG 508, 625
329(T)	Aus 292, 837, 839, 840, 841
330(T)	Aus 328
331(T)	Aus 325, 326
332(T)	Aus 84, 753, 4725, INT 725
333(T)	Aus 732, 733
334(T)	Aus 328, 329
335(T)	Aus 400, 606, 608, 4708, 4714, INT 708, 714
336(T)	Aus 144
337(T)	Aus 155
338(T)	Aus 155
339(T)	Aus 151
340(T)	Aus 487
341(T)	Aus 179, 487, 798, 800

NUMERICAL INDEX OF CHARTS AFFECTED

Edition No 8

Aus Chart	Notices
Aus 4	325(T)
Aus 14	312
Aus 84	332(T)
Aus 144	336(T)
Aus 151	339(T)
Aus 155	337(T), 338(T)
Aus 176	315
Aus 179	341(T)
Aus 236	310, 319(T), 320(T)
Aus 238	316(T)
Aus 248	322(T)
Aus 249	318(T), 321(T)
Aus 250	318(T)
Aus 256	309, 324(T)
Aus 260	322(T)
Aus 292	329(T)
Aus 301	325(T)
Aus 320	313
Aus 325	331(T)
Aus 326	331(T)
Aus 328	330(T), 334(T)
Aus 329	334(T)
Aus 367	322(T)
Aus 400	335(T)
Aus 487	314, 340(T), 341(T)
Aus 490	322(T)
Aus 606	335(T)
Aus 608	335(T)
Aus 722	307
Aus 732	333(T)
Aus 733	333(T)
Aus 753	332(T)
Aus 767	307
Aus 793	315
Aus 798	307, 314, 341(T)
Aus 800	307, 341(T)
Aus 808	308
Aus 813	311
Aus 814	311
Aus 819	317(T)
Aus 820	322(T)
Aus 822	322(T)
Aus 823	318(T), 321(T)
Aus 824	318(T)
Aus 827	309, 323(T), 324(T)
Aus 828	323(T)
Aus 837	329(T)
Aus 839	329(T)
Aus 840	329(T)
Aus 841	329(T)
Aus 4604	326(T)
Aus 4620	326(T)
Aus 4621	326(T)
Aus 4644	314

Aus Chart	Notices
Aus 4708	335(T)
Aus 4714	335(T)
Aus 4725	332(T)
PNG 507	326(T)
PNG 508	326(T), 328(T)
PNG 509	327(T)
PNG 512	327(T)
PNG 625	328(T)

INT Chart	Notices
INT 604	326(T)
INT 620	326(T)
INT 621	326(T)
INT 644	314
INT 708	335(T)
INT 714	335(T)
INT 725	332(T)

306 AUSTRALIA - Products - New Charts, New Editions, Withdrawn Charts

Australian Hydrographic Office

New Charts

Chart	Title and Geographical limits	Scale	Publication Date	Remarks
NIL				

New Electronic Navigation Chart (Aus ENC)

Cell Name	Title	Publication Date	Remarks
NIL			

New Editions and Withdrawn Charts

Chart	Title	Scale	Publication Date	Remarks
NIL				

Chart permanently withdrawn

Charts listed above as withdrawn no longer meet chart carriage requirements and should be marked as "superseded" and replaced with the new chart/ new edition listed prior to passage through the area covered by the new chart.

When placing orders with a chart agent between notice of forthcoming edition and its publication, mariners should advise whether their order pertains to the current edition or the new edition.

For further details refer to the AHO website at www.hydro.gov.au for new edition and new chart stock arrival information.

307 AUSTRALIA - Products - New Charts and New Editions to be published shortly

Australian Hydrographic Office

New Charts to be published shortly

Chart	Title	Scale	Remarks
NIL			

New Editions to be published shortly

Chart	Title	Scale	Remarks
Aus 767	Australia - Tasmania - Wardlaws Point to Eddystone Point	1:150 000	New edition with general updating throughout; including latest bathymetric data.
Aus 798	Australia - Tasmania - Eddystone Point to Stony Head	1:150 000	New edition with general updating throughout; including latest bathymetric data.
Aus 800	Australia - Tasmania - Furneaux Group	1:150 000	New edition with general updating throughout; including latest bathymetric data.

Charts to be withdrawn without replacement 27 May 2022

Chart	Title	Scale	Remarks
Aus 722 Edition 5	Australia - North Coast - Northern Territory - Beagle Gulf and Clarence Strait	1:150 000	19 February 2021

308 AUSTRALIA - NEW SOUTH WALES - Coogee Bay - Submarine cable southeastwards
UKHO

Aus 808 [253/2022]

Insert	submarine cable, between	34° 03'.73 S	151° 30'.73 E
		34° 03'.62 S	151° 29'.95 E
		34° 03'.30 S	151° 29'.18 E
		33° 58'.18 S	151° 22'.99 E
		33° 57'.83 S	151° 22'.68 E
		33° 57'.39 S	151° 22'.58 E
		33° 57'.07 S	151° 22'.34 E
		33° 54'.70 S	151° 18'.64 E
		33° 54'.61 S	151° 18'.27 E
		33° 54'.68 S	151° 17'.88 E
		33° 54'.94 S	151° 17'.46 E
		33° 55'.38 S	151° 16'.94 E
		33° 55'.72 S	151° 16'.77 E
		33° 55'.81 S	151° 16'.59 E
		33° 55'.80 S	151° 16'.37 E

309 AUSTRALIA - QUEENSLAND - Cleveland Bay - Mooring buoys
Maritime Safety Queensland Notice 170(T)/2022

Aus 256 [685/2021]

Insert	lit mooring buoy, <i>Fl. Y. 2·5s</i>	19° 12'.18 S	146° 55'.74 E
	lit mooring buoy, <i>Fl. Y. 2·5s</i>	19° 12'.47 S	146° 55'.44 E

Aus 827 [685/2021]

Insert	lit mooring buoy, <i>Fl. Y. 2·5s</i>	19° 12'.18 S	146° 55'.74 E
--------	--------------------------------------	--------------	---------------

310 AUSTRALIA - QUEENSLAND - Moreton Bay - Manly - Lights; bearing
Maritime Safety Queensland Notice 160/2022

Aus 236 [54/2022]

Insert	dashed line, between	27° 27'.26 S	153° 11'.15 E
		27° 27'.32 S	153° 11'.03 E
	light, <i>F.Bu (F Day)</i>	27° 27'.32 S	153° 11'.03 E
Amend	legend to 242°	27° 26'.3 S	153° 13'.0 E
	light to <i>F.Bu (F Day)</i>	27° 27'.2 S	153° 11'.3 E
Delete	light	27° 27'.3 S	153° 11'.1 E

Aus 236 (Manly Boat Harbour) [54/2022]

Insert	dashed line, between	27° 27'.263 S	153° 11'.127 E
		27° 27'.315 S	153° 11'.030 E
	light, <i>F.Bu (F Day)</i>	27° 27'.315 S	153° 11'.030 E
Amend	legend to 242°	27° 26'.30 S	153° 13'.11 E
	light to <i>F.Bu (F Day)</i>	27° 27'.16 S	153° 11'.34 E
Delete	daymark	27° 27'.16 S	153° 11'.34 E
	light	27° 27'.27 S	153° 11'.12 E

311 AUSTRALIA - QUEENSLAND - Point Danger - Light buoy
Maritime Safety Queensland Notice 162/2022

Aus 813 [99/2022]

Move	light buoy	28° 10'.7 S	153° 34'.5 E
	to	28° 10'.59 S	153° 34'.91 E

Aus 814 [223/2022]

Move	light buoy	28° 10'.7 S	153° 34'.5 E
	to	28° 10'.59 S	153° 34'.91 E

312 AUSTRALIA - NORTHERN TERRITORY - Groote Eylandt - North-West Bay - Marine farms

Northern Territory Government Notice 4/2022

Note: position of existing chart notes may vary on certain charts.**Aus 14 [104/2022]**

Insert	marine farm symbol with legend, (<i>see Note</i>), centred on	13° 45'.08 S	136° 35'.25 E
	marine farm symbol with legend, (<i>see Note</i>), centred on	13° 46'.03 S	136° 35'.12 E
	marine farm symbol with legend, (<i>see Note</i>), centred on	13° 46'.04 S	136° 33'.05 E
	accompanying chart note, MARINE FARMS	13° 47'.0 S	136° 39'.5 E
	marine farm symbol with legend, (<i>see Note</i>), centred on	13° 48'.07 S	136° 33'.11 E

313 AUSTRALIA - WESTERN AUSTRALIA - Institut Islands - Depths

Australian Hydrographic Office

Aus 320 [263/2022]

Insert	accompanying block A	13° 50'.0 S	125° 45'.0 E
	accompanying block B	14° 13'.0 S	125° 39'.0 E

314 AUSTRALIA - TASMANIA - Banks Strait - Swan Island - Light

Australian Maritime Safety Authority Final ATH 6/2022

Aus 487 [269/2022]

Amend	light range to 15M	40° 43'.7 S	148° 07'.5 E
-------	--------------------	-------------	--------------

Aus 798 [269/2022]

Amend	light range to 15M	40° 43'.7 S	148° 07'.5 E
-------	--------------------	-------------	--------------

Aus 4644 (INT 644) [978/2021]

Amend	light range to 15M	40° 43'.7 S	148° 07'.5 E
-------	--------------------	-------------	--------------

315 AUSTRALIA - TASMANIA - Port Davey - Nares Rock - Depth

A Boon

Aus 176 [887/2019]

Insert	depth, 2,m, enclosed by contour with legend, <i>Rep (2022)</i>	43° 21'.080 S	145° 56'.630 E
--------	--	---------------	----------------

Aus 793 [324/2021]

Insert	depth, 2,m, enclosed by contour with legend, <i>Rep (2022)</i>	43° 21'.08 S	145° 56'.63 E
--------	--	--------------	---------------

316(T)/2022 AUSTRALIA - QUEENSLAND - Brisbane River - Bulimba Point - Wreck
 Maritime Safety Queensland Notice 172(T)/2022

A wreck marked by a special light buoy, *Fl.Y.2-5s*, exists in position 27° 26'.43 S 153° 03'.28 E.

Mariners are advised to navigate with caution in the area.

Chart temporarily affected - Aus 238

317(T)/2022 AUSTRALIA - QUEENSLAND - Fitzroy Reef - Buoy off station
 Maritime Safety Queensland Notice 157(T)/2022

The starboard lateral buoy (23° 36'.58 S 152° 09'.40 E) is off station.

Chart temporarily affected - Aus 819

318(T)/2022 AUSTRALIA - QUEENSLAND - Mackay - Slade Rock - Light buoy restored
Former Notice - 280(T)/2022 is cancelled
 Maritime Safety Queensland

Cancel this notice on receipt.

Chart formerly affected - Aus 249 - Aus 250 - Aus 823 - Aus 824

319(T)/2022 AUSTRALIA - QUEENSLAND - Moreton Bay - Manly Boat Harbour - Light beacon restored
Former Notice - 72(T)/2021 is cancelled
 Australian Hydrographic Office

Cancel this notice on receipt.

Chart formerly affected - Aus 236

320(T)/2022 AUSTRALIA - QUEENSLAND - Moreton Bay - Manly Boat Harbour - Light beacon destroyed
 Maritime Safety Queensland Notice 178(T)/2022

The light beacon, *Fl.R.3s No8* (27° 26'.98 S 153° 11'.76 E), has been destroyed; a light buoy, *Fl.R.3s*, exists in situ.

Chart temporarily affected - Aus 236

321(T)/2022 AUSTRALIA - QUEENSLAND - Sarina Inlet - Light buoy restored
Former Notice - 241(T)/2022 is cancelled
 Maritime Safety Queensland

Cancel this notice on receipt.

Chart formerly affected - Aus 249 - Aus 823

322(T)/2022 AUSTRALIA - QUEENSLAND - Shoalwater Bay - Live firing

Maritime Safety Queensland Notice 169(T)/2022

Live firing will be conducted in the marine component of the Shoalwater Bay training area during the period 28 to 29 April 2022.

A marine danger area extends to all internal waters bounded by the following positions:

22° 21'.20 S 150° 10'.52 E
 22° 35'.87 S 150° 28'.80 E
 22° 38'.18 S 150° 43'.15 E
 22° 38'.80 S 150° 48'.21 E
 22° 18'.98 S 150° 33'.98 E
 22° 33'.23 S 150° 35'.28 E
 22° 33'.77 S 150° 33'.27 E.

All waters, creeks, beaches and other areas within the declared marine danger area are not available for access.

There will be a safe anchorage available at Port Clinton, Pearl Bay, Island Head Creek and Supply Bay Townshend Island.

Mariners are advised to keep clear of this area throughout the above times.

Chart temporarily affected - Aus 248 - Aus 260 - Aus 367 - Aus 490 - Aus 820 - Aus 822

323(T)/2022 AUSTRALIA - QUEENSLAND - Taylors Beach - Light buoy withdrawn; light buoy established

Maritime Safety Queensland Notice 158(T)/2022

The safe water light buoy, *Iso.2s* (18° 36'.90 S 146° 21'.55 E), has been temporarily withdrawn; a port lateral light buoy, *Fl.R.2.5s*, exists in situ.

Chart temporarily affected - Aus 827 - Aus 828

324(T)/2022 AUSTRALIA - QUEENSLAND - Townsville - Dredging operations completed

Former Notice - 125(T)/2022 is cancelled

Maritime Safety Queensland

Cancel this notice on receipt.

Chart formerly affected - Aus 256 - Aus 827

325(T)/2022 AUSTRALIA - QUEENSLAND - Weipa - Dredging operations

Maritime Safety Queensland Notice 177(T)/2022

On or about 28 April 2022, dredge *Brisbane* and vessel *Pacific Titan* are conducting dredging and bed levelling operations in the Port of Weipa (12° 40'.70 S 141° 47'.00 E) and Amrun (12° 55'.36 S 141° 36'.53 E).

Vessels will monitor VHF Ch 12 and Ch 16.

Mariners are advised to navigate with caution in the area.

Chart temporarily affected - Aus 4 - Aus 301

326(T)/2022 PAPUA NEW GUINEA - Bonarua (Brumer) Islands - Light relit

Former Notice - 70(T)/2022 is cancelled

National Maritime Safety Authority PNG Coastal Navigation Warning 7/2022

Cancel this notice on receipt.

Chart formerly affected - Aus 4604 (INT 604) - Aus 4620 (INT 620) - Aus 4621 (INT 621) - PNG 507 - PNG 508

327(T)/2022 PAPUA NEW GUINEA - Bonvouloir Islands - Aulelowa (Hastings) Island - Light unlit
National Maritime Safety Authority PNG Coastal Navigation Warning 8/2022

The light, *Fl(2)6s 8m 10M* (10° 20'.48 S 151° 52'.07 E), is unlit.

Chart temporarily affected - PNG 509 - PNG 512

328(T)/2022 PAPUA NEW GUINEA - Kwanasasau (China) Strait - Weku Una - Light beacon relit
Former Notice - 895(T)/2021 is cancelled
National Maritime Safety Authority PNG Coastal Navigation Warning 6/2022

Cancel this notice on receipt.

Chart formerly affected - PNG 508 - PNG 625

329(T)/2022 AUSTRALIA - TORRES STRAIT - Great North East Channel - Survey operations completed
Former Notice - 72(T)/2022 is cancelled
EGS Survey Pty Ltd

Cancel this notice on receipt.

Chart formerly affected - Aus 292 - Aus 837 - Aus 839 - Aus 840 - Aus 841

330(T)/2022 AUSTRALIA - WESTERN AUSTRALIA - Barrow Island - Scientific instruments northwestwards recovered
Former Notice - 986(T)/2021 is cancelled
Technip FMC

Cancel this notice on receipt.

Chart formerly affected - Aus 328

331(T)/2022 AUSTRALIA - WESTERN AUSTRALIA - Bedout Islet - Drill rig northwards moved
Former Notice - 177(T)/2022 is cancelled
MODU *Noble Tom Prosser*

Drill rig *Noble Tom Prosser* is conducting drilling operations in position 19° 11'.42 S 118° 59'.18 E.

Mariners are advised to navigate with caution in the area. 2.5NM clearance requested.

Chart temporarily affected - Aus 325 - Aus 326

332(T)/2022 AUSTRALIA - WESTERN AUSTRALIA - Escape Island - Light unlit
Department of Transport WA Notice 1119/2022

The light, *Fl(3)15s 30m 10M* (30° 20'.01 S 114° 59'.19 E), is unlit.

Chart temporarily affected - Aus 84 - Aus 753 - Aus 4725 (INT 725)

333(T)/2022 AUSTRALIA - WESTERN AUSTRALIA - Malumbo Anchorage - Scientific instrument recovered
Former Notice - 76(T)/2022 is cancelled
Department of Transport WA

Cancel this notice on receipt.

Chart formerly affected - Aus 732 - Aus 733

334(T)/2022 AUSTRALIA - WESTERN AUSTRALIA - Muiron Islands - Well plug and abandonment works northwestwards

Woodside Energy Ltd

Drill rig *Valaris DPS-1* and support vessels *Normand Swan*, *Normand Tortuga* and *Siem Pilot* are conducting well plug and abandonment works in the following positions:

21° 28'.90 S 113° 59'.32 E
 21° 27'.93 S 113° 59'.58 E
 21° 29'.26 S 113° 58'.51 E
 21° 30'.06 S 113° 57'.85 E.

Mariners are advised to navigate with caution in the area.

Chart temporarily affected - Aus 328 - Aus 329

335(T)/2022 INDIAN OCEAN - Coco (Keeling) Islands to Christmas Island - Survey operations

Marine Tech Systems

Three AUVs are conducting survey operations in an area bounded by the following positions:

12° 30'.0 S 97° 00'.0 E
 12° 30'.0 S 105° 30'.0 E
 10° 00'.0 S 105° 30'.0 E
 9° 30'.0 S 103° 30'.0 E
 9° 30'.0 S 97° 00'.0 E

Mariners are advised to navigate with caution in the area.

Chart temporarily affected - Aus 400 - Aus 606 - Aus 608 - Aus 4708 (INT 708) - Aus 4714 (INT 714)

336(T)/2022 AUSTRALIA - VICTORIA - Port Phillip - Ticonderoga Bay - Buoy restored

Former Notice - 1000(T)/2021 is cancelled

Parks Victoria Notice 118/2022

Cancel this notice on receipt.

Chart formerly affected - Aus 144

337(T)/2022 AUSTRALIA - VICTORIA - Port Phillip - Ricketts Point - Light beacons obscured

Parks Victoria Notice 128(T)/2022

The south cardinal light beacons, *Q(6)+LFl. 15s* (37° 59'.95 S 145° 02.04 E) and *VQ(6)+LFl. 10s* (37° 59'.86 S 145° 02.30 E), are partially obscured and not visible from all directions.

Mariners are advised to navigate with caution in the area.

Chart temporarily affected - Aus 155

338(T)/2022 AUSTRALIA - VICTORIA - Port Phillip - Port Melbourne Channel - Light beacon unlit

Ports Victoria Notice 131(T)/2022

The port lateral light beacon, *Fl(2)R. 4s No10* (37° 53'.19 S 144° 55'.60 E), is unlit; a virtual AIS exists in situ.

Chart temporarily affected - Aus 155

339(T)/2022 AUSTRALIA - VICTORIA - Western Port - French Island - Tea Tree Point - Light relit

Former Notice - 1036(T)/2021 is cancelled

Parks Victoria Notice 120(T)/2022

Cancel this notice on receipt.

Chart formerly affected - Aus 151

340(T)/2022 AUSTRALIA - BASS STRAIT - Drilling operations completed*Former Notice - 299(T)/2022 is cancelled*

Australian Maritime Safety Authority

Cancel this notice on receipt.

Chart formerly affected - Aus 487**341(T)/2022 AUSTRALIA - TASMANIA - Furneaux Group - Flinders Island - Survey operations; scientific instruments**

Fugro

Survey operations are in progress at various locations around Flinders Island.

Subsurface scientific instruments exist in the following positions:

40° 13'.2 S 148° 14'.9 E

40° 16'.3 S 148° 05'.7 E

40° 24'.9 S 147° 58'.1 E

40° 17'.7 S 147° 48'.4 E

40° 10'.0 S 147° 55'.0 E

40° 02'.5 S 147° 52'.8 E

40° 03'.7 S 147° 40'.8 E

39° 54'.0 S 147° 45'.9 E

39° 44'.8 S 147° 52'.7 E

39° 38'.4 S 147° 59'.4 E

39° 45'.1 S 148° 08'.4 E

40° 14'.7 S 148° 16'.9 E

40° 17'.5 S 148° 13'.5 E

40° 19'.6 S 148° 04'.1 E

39° 45'.1 S 148° 08'.4 E.

Mariners area advised to navigate with caution in the area.

Chart temporarily affected - Aus 179 - Aus 487 - Aus 798 - Aus 800

HYDROGRAPHIC REPORTS

<i>Locality</i>	<i>Report</i>	<i>Ship/Authority</i>	<i>Observer</i>
TAS- Nares Rock, Port Davey	Shoal		A Boon

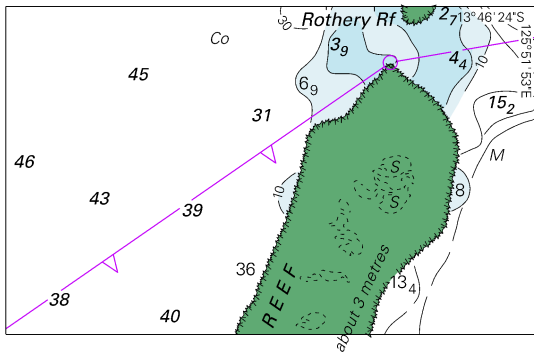
To accompany Australian Notice to Mariners 312/2022

MARINE FARMS

Marine farms, which may be floating or fixed structures and their associated moorings should be avoided. The farms are generally marked by buoys or beacons, which may be lit. Their charted positions are approximate.

Note for chart Aus 14

To accompany Australian Notice to Mariners 313/2022



© Commonwealth of Australia 2022

Block A for chart Aus 320

(70.3 x 43.4mm)

