



11 November 2022

Edition 23

AUSTRALIAN NOTICES TO MARINERS

Notices 920 - 962

Published fortnightly by the Australian Hydrographic Office



Australian Notices to Mariners are the authority for correcting charts and publications published by the Australian Hydrographic Office covering Australia, Papua New Guinea, Solomon Islands, Australian Antarctic Territory and Timor-Leste.

Commodore S.T. DUNNE RAN
Hydrographer of Australia

SECTIONS.

- I. **Australian Notices to Mariners, including blocks and notes.**
- II. **Hydrographic Reports.**

SUPPLEMENTS.

- I. **Tracings**
 - II. **Cumulative List of Australian Notices to Mariners.**
 - III. **Cumulative List of Temporary and Preliminary Australian Notices to Mariners.**
 - IV. **Temporary and Preliminary Notices in force.**
-
-

© Commonwealth of Australia 2022

This work is copyright. Apart from any use permitted under the Copyright Act 1968, no part may be reproduced by any process, adapted, communicated or commercially exploited without prior written permission from The Commonwealth represented by the Australian Hydrographic Office.

IMPORTANT NOTICE

This edition of Notices to Mariners includes all significant information affecting AHO products which the AHO has become aware of since the last edition. All reasonable efforts have been made to ensure the accuracy and completeness of the information, including third party information, on which these updates are based. The AHO regards third parties from which it receives information as reliable, however the AHO cannot verify all such information and errors may therefore exist. The AHO does not accept liability for errors in third party information.

GENERAL INSTRUCTIONS

The substance of these notices should be inserted on the charts affected.

Bearings are referred to the true compass and are reckoned clockwise from North; those relating to lights are given as seen by an observer from seaward.

Positions quoted in notices relate to WGS84 which is the horizontal datum for all charts produced by the Australian Hydrographic Office.

The range quoted for a light is its nominal range.

Depths are with reference to the chart datum of each chart. Heights are above mean high water springs or mean higher high water, as appropriate.

The capital letter (P) or (T) after the number of any notice denotes a preliminary or temporary notice respectively, which are contained separately at the end of the permanent notices.

REPORTING OF DANGERS

Mariners are particularly requested to notify the AUSTRALIAN HYDROGRAPHIC OFFICE, Locked Bag 8801 Wollongong, NSW 2500 (Fax 02-4223 6599, e-mail datacentre@hydro.gov.au or, alternatively by filling in and submitting the [Hydrographic Notes](#) forms located on the web site – www.hydro.gov.au), immediately on the discovery of new dangers or suspected dangers to navigation. For changes or defects in aids to navigation notify AusSAR (Fax 02-6230 6868 or email rccaus@amsa.gov.au).

AUTHORISED USE

Copies of Australian notices are available free of charge from the Australian Hydrographic Office (AHO) website (www.hydro.gov.au) and through the eNotices (email) service (www.hydro.gov.au/enotices/enotices.htm).

Individual Notices may be copied for the purpose of inserting Notice substance on official charts and publications. Paper copies may be printed by chart agents and distributed to customers on a cost recovery basis. Participating chart agents are listed on the AHO website as providing a 'Paper Notices to Mariners' service (www.hydro.gov.au/webapps/jsp/agents/agents-list.jsp). Copies of the notices may not be sold for profit without prior written agreement.

NUMERICAL INDEX OF NOTICES TO MARINERS

Edition No 23

Notices	Aus Chart, INT Chart, ENC Cell, AHP, BA Pubs
920	Aus 812, 901, 907, 911
921	Aus 72, 293, 296, 299
922	Aus 204, 809
923	Aus 222
924	Aus 200
925	Aus 819, 820
926	Aus 249, 250
927	PNG 539, 545, 554, 680, 684
928	PNG 518
929	PNG 512
930	PNG 510, 627
931	PNG 514, 515, 516, 637
932	PNG 506, 623
933	Aus 323
934	Aus 349, 787
935	Aus 151
936	Aus 173, 795, 796
937	Aus 171, 796
938	Aus 178
939	Aus 487, 789, 790
940	Aus 167
941(T)	Aus 242
942(T)	Aus 249, 251, 367, 821, 823, 824
943(T)	Aus 252, 253, 254
944(T)	Aus 821
945(T)	Aus 820
946(T)	Aus 236
947(T)	Aus 256, 827
948(T)	Aus 260, 367, 822
949(T)	Aus 328, 742
950(T)	Aus 328
951(T)	Aus 754, 4708, 4709, INT 708, 709
952(T)	Aus 328, 329, 4723, INT 723
953(T)	Aus 315, 318
954(T)	Aus 328, 742
955(T)	Aus 328, 742
956(T)	Aus 328
957(T)	Aus 328, 329, 744
958(T)	Aus 320, 730
959(T)	Aus 357
960(T)	Aus 143, 155
961(T)	Aus 143, 155
962(T)	Aus 171

NUMERICAL INDEX OF CHARTS AFFECTED

Edition No 23

Aus Chart	Notices
Aus 72	921
Aus 143	960(T), 961(T)
Aus 151	935
Aus 155	960(T), 961(T)
Aus 167	940
Aus 171	937, 962(T)
Aus 173	936
Aus 178	938
Aus 200	924
Aus 204	922
Aus 222	923
Aus 236	946(T)
Aus 242	941(T)
Aus 249	926, 942(T)
Aus 250	926
Aus 251	942(T)
Aus 252	943(T)
Aus 253	943(T)
Aus 254	943(T)
Aus 256	947(T)
Aus 260	948(T)
Aus 293	921
Aus 296	921
Aus 299	921
Aus 315	953(T)
Aus 318	953(T)
Aus 320	958(T)
Aus 323	933
Aus 328	949(T), 950(T), 952(T), 954(T), 955(T), 956(T), 957(T)
Aus 329	952(T), 957(T)
Aus 349	934
Aus 357	959(T)
Aus 367	942(T), 948(T)
Aus 487	939
Aus 730	958(T)
Aus 742	949(T), 954(T), 955(T)
Aus 744	957(T)
Aus 754	951(T)
Aus 787	934
Aus 789	939
Aus 790	939
Aus 795	936
Aus 796	936, 937
Aus 809	922
Aus 812	920
Aus 819	925
Aus 820	925, 945(T)
Aus 821	942(T), 944(T)
Aus 822	948(T)
Aus 823	942(T)
Aus 824	942(T)
Aus 827	947(T)
Aus 901	920
Aus 907	920

Aus Chart	Notices
Aus 911	920
Aus 4708	951(T)
Aus 4709	951(T)
Aus 4723	952(T)
PNG 506	932
PNG 510	930
PNG 512	929
PNG 514	931
PNG 515	931
PNG 516	931
PNG 518	928
PNG 539	927
PNG 545	927
PNG 554	927
PNG 623	932
PNG 627	930
PNG 637	931
PNG 680	927
PNG 684	927

INT Chart	Notices
INT 708	951(T)
INT 709	951(T)
INT 723	952(T)

920 AUSTRALIA - Products - New Charts, New Editions, Withdrawn Charts

Australian Hydrographic Office

New Charts

<i>Chart</i>	<i>Title and Geographical limits</i>	<i>Scale</i>	<i>Publication Date</i>	<i>Remarks</i>
Aus 911	Timor-Leste - North Coast - Porto Baia de Dili 8° 31'·98 S – 8° 33'·30 S 125° 34'·00 E – 125° 34'·98 E	1:3 750	11 November 2022	New chart with latest bathymetric survey data.

New Electronic Navigation Chart (Aus ENC)

<i>Cell Name</i>	<i>Title</i>	<i>Publication Date</i>	<i>Remarks</i>
NIL			

New Editions and Withdrawn Charts

<i>Chart</i>	<i>Title</i>	<i>Scale</i>	<i>Publication Date</i>	<i>Remarks</i>
Aus 812 (Edition 3)	Australia - East Coast - New South Wales - Nambucca Heads to Clarence River	1:150 000	11 November 2022	New edition with general updating throughout; including new bathymetric data. Chart Aus 812 Edition 2 dated 21 September 2018 is now superseded and must be withdrawn from use.
Aus 901 (Edition 3)	Timor-Leste - North Coast - Approaches to Dili	1:10 000	11 November 2022	New edition with general updating throughout; including new bathymetric data, anchorage areas and port limits. Chart Aus 901 Edition 2 dated 30 June 2017 is now superseded and must be withdrawn from use.
Aus 907 (Edition 2)	Timor-Leste - North Coast - Approaches to Tibar	1:10 000	11 November 2022	New edition with general updating throughout; including new anchorage areas and port limits. Chart Aus 907 Edition 1 dated 2 September 2022 is now superseded and must be withdrawn from use.

Chart permanently withdrawn

Charts listed above as withdrawn no longer meet chart carriage requirements and should be marked as "superseded" and replaced with the new chart/ new edition listed prior to passage through the area covered by the new chart.

When placing orders with a chart agent between notice of forthcoming edition and its publication, mariners should advise whether their order pertains to the current edition or the new edition.

For further details refer to the AHO website at www.hydro.gov.au for new edition and new chart stock arrival information.

921 AUSTRALIA - Products - New Charts and New Editions to be published shortly

Australian Hydrographic Office

New Charts to be published shortly

Chart	Title	Scale	Remarks
NIL			

New Electronic Navigation Chart (Aus ENC) to be published shortly

Cell Name	Title	Remarks
NIL		

New Editions to be published shortly

Chart	Title	Scale	Remarks
Aus 293	Australia - North Coast - Torres Strait - Prince of Wales Channel	1:37 500	New edition with general updating throughout; including new bathymetric data.
Aus 296	Australia - North Coast - Torres Strait - Prince of Wales Channel to Varzin Passage	1:37 500	New edition with general updating throughout; including new bathymetric data.
Aus 299	Australia - North Coast - Torres Strait - Approaches to Thursday Island	1:12 500	New edition with general updating throughout; including new bathymetric data.

Charts to be withdrawn without replacement 2 December 2022

Chart	Title	Scale	Remarks
Aus 72	Australia - West Coast - Western Australia - Plans in Western		26 August 2011
Edition 1	Australia (Sheet 3)		
	Plans:		Paper chart
	Norwegian Bay and Point Cloates	1:50 000	rationalisation.
	Mauds Landing	1:37 500	
	Point Murat Wharf	1:12 500	
	Exmouth Boat Harbour	1:10 000	

922 AUSTRALIA - NEW SOUTH WALES - Broken Bay - Depths

Port Authority of New South Wales , Fugro

Aus 204 [709/2022]

Insert	depth, 29 ₇ m, enclosed by contour	33° 26'.02 S	151° 28'.81 E
	depth, 6 ₈ m	33° 32'.23 S	151° 24'.02 E
	depth, 4 ₈ m, enclosed by danger circle with legend, <i>Obstn</i>	33° 34'.24 S	151° 16'.51 E
	depth, 5m, enclosed by contour	33° 34'.35 S	151° 16'.35 E
Replace	depth, 1 ₄ m, with depth, 1 ₇ m	33° 32'.3 S	151° 22'.5 E
Delete	depth, 10m	33° 32'.4 S	151° 24'.0 E
	depth, 5 ₂ m	33° 34'.3 S	151° 16'.5 E
	depth, 5 ₁ m	33° 34'.4 S	151° 16'.4 E

Aus 809 [710/2022]

Insert	depth, 29 ₇ m, and extend contour SE to enclose	33° 26'.02 S	151° 28'.81 E
Delete	depth, 32m	33° 26'.1 S	151° 28'.9 E

923 AUSTRALIA - NEW SOUTH WALES - Clarence River - Depths

Australian Hydrographic Office

Aus 222 [585/2021]

Insert	depth, 27 ₂ m	29° 23'.247 S	153° 23'.802 E
	depth, 14 ₈ m	29° 23'.522 S	153° 22'.706 E
	depth, 18 ₃ m	29° 27'.383 S	153° 22'.551 E
Replace	depth, 25 ₇ m, with depth, 27 ₂ m	29° 26'.21 S	153° 23'.41 E
	depth, 25 ₇ m, with depth, 26 ₂ m	29° 26'.92 S	153° 23'.20 E
Delete	depth, 25 ₇ m	29° 23'.31 S	153° 23'.78 E
	depth, 13 ₈ m	29° 23'.44 S	153° 22'.68 E
	depth, 17 ₁ m	29° 27'.35 S	153° 22'.58 E

924 AUSTRALIA - NEW SOUTH WALES - Port Jackson - Balls Head Bay - Contours

Department of Defence

Aus 200 [596/2022]

Insert	contour, between	33° 50'.372 S	151° 11'.493 E
		33° 50'.358 S	151° 11'.516 E
	contour, between	33° 50'.358 S	151° 11'.536 E
		33° 50'.329 S	151° 11'.562 E
		33° 50'.322 S	151° 11'.550 E
Delete	contour, between	33° 50'.37 S	151° 11'.49 E
		33° 50'.34 S	151° 11'.54 E

925 AUSTRALIA - QUEENSLAND - Double Head - Rock

Maritime Safety Queensland

Aus 819 [601/2022]

Replace	depth, 3 ₇ m, with depth, 3 ₃ m	23° 09'.1 S	150° 47'.8 E
---------	---	-------------	--------------

Aus 820 [601/2022]

Replace	depth, 3 ₇ m, with depth, 3 ₃ m	23° 09'.1 S	150° 47'.8 E
---------	---	-------------	--------------

926 AUSTRALIA - QUEENSLAND - Mackay - Lights; navline

Maritime Safety Queensland

Aus 249 [680/2022]

Delete	light, 2F.Bu (2F Day)	21° 06'.8 S	149° 13'.7 E
	dashed and continuous line with legend, 209·5°, emanating from light	21° 06'.8 S	149° 13'.7 E

Aus 250 (Mackay Harbour) [681/2022]

Insert	legend, 209·5°	21° 06'.051 S	149° 14'.118 E
Delete	continuous line, between legend, 209·5°	21° 06'.00 S	149° 14'.16 E
		21° 05'.14 S	149° 14'.68 E
		21° 05'.19 S	149° 14'.65 E

927 PAPUA NEW GUINEA - Buka Passage - Blanche Bay - Malendok Island - Navais

National Maritime Safety Authority PNG

PNG 539 [NC 21/2/2020]

Insert	west cardinal light beacon, Q(9)15s, with topmark	3° 27'.25 S	153° 10'.42 E
--------	---	-------------	---------------

PNG 545 [103/2022]

Insert	south cardinal light beacon, Q(6)+LFl. 15s, with topmark	4° 16'.21 S	152° 20'.99 E
	light beacon, Fl.R. 6s, with port lateral topmark	4° 17'.54 S	152° 12'.83 E

PNG 554 [103/2022]

Insert	south cardinal light beacon, Q(6)+LFl. 15s, with topmark	4° 16'.21 S	152° 20'.99 E
	light beacon, Fl.R. 6s, with port lateral topmark	4° 17'.54 S	152° 12'.83 E

PNG 680 [103/2022]

Insert	light, Fl.R. 6s	4° 15'.71 S	152° 10'.35 E
	south cardinal light beacon, Q(6)+LFl. 15s, with topmark	4° 16'.21 S	152° 20'.99 E
	light beacon, Fl.R. 6s, with port lateral topmark	4° 17'.54 S	152° 12'.83 E

Delete	depth, 7 ₈ m	4° 17'.4 S	152° 12'.8 E
--------	-------------------------	------------	--------------

PNG 680 (Simpson and Matupit Harbours) [103/2022]

Insert	light, Fl.R. 6s	4° 15'.710 S	152° 10'.351 E
--------	-----------------	--------------	----------------

PNG 684 (Approaches to Queen Carola Harbour) [NC 23/8/2019]

Replace	beacon with light beacon, Fl.R. 6s, with port lateral topmark	5° 08'.2 S	154° 32'.9 E
---------	---	------------	--------------

PNG 684 (Buka Passage) [NC 23/8/2019]

Insert	light beacon, Fl.R. 6s, with port lateral topmark	5° 26'.882 S	154° 37'.824 E
--------	---	--------------	----------------

928 PAPUA NEW GUINEA - D'Entrecasteaux Islands - Dobu Passage to Dawson Strait - Light beacons

National Maritime Safety Authority PNG

PNG 518 [369/2020]

Insert	west cardinal light beacon, Q(9)15s, with topmark	9° 37'.34 S	150° 56'.86 E
	east cardinal light beacon, Q(3)10s, with topmark	9° 38'.00 S	150° 56'.33 E
	east cardinal light beacon, Q(3)10s, with topmark	9° 39'.19 S	150° 56'.53 E
	south cardinal light beacon, Q(6)+LFl. 15s, with topmark	9° 42'.15 S	150° 55'.05 E
	north cardinal light beacon, Q, with topmark	9° 42'.71 S	150° 46'.00 E
	contour value, 15	9° 42'.81 S	150° 54'.60 E
	north cardinal light beacon, Q, with topmark	9° 42'.98 S	150° 54'.34 E
	south cardinal light beacon, Q(6)+LFl. 15s, with topmark	9° 43'.34 S	150° 50'.44 E
	north cardinal light beacon, Q, with topmark	9° 44'.20 S	150° 52'.18 E

Delete	depth, 12 ₄ m	9° 42'.8 S	150° 54'.4 E
--------	--------------------------	------------	--------------

929 PAPUA NEW GUINEA - Deboyne Islands - Light beacons

National Maritime Safety Authority PNG

PNG 512 [NC 20/3/2020]

Insert	light beacon, Fl.R. 6s, with port lateral topmark	10° 44'.31 S	152° 25'.13 E
	light beacon, Fl.R. 6s, with port lateral topmark	10° 46'.74 S	152° 18'.19 E
	light beacon, Fl.G. 6s, with starboard lateral topmark	10° 48'.34 S	152° 29'.29 E
	light beacon, Fl.G. 6s, with starboard lateral topmark	10° 48'.35 S	152° 18'.00 E
	light beacon, Fl.R. 6s, with port lateral topmark	10° 48'.95 S	152° 29'.36 E

930 PAPUA NEW GUINEA - Jomard Entrance - Light beacons

National Maritime Safety Authority PNG

PNG 510 [258/2022]

Insert	west cardinal light beacon, Q(9)15s, with topmark	11° 15'.33 S	152° 10'.85 E
Replace	light beacon with east cardinal light beacon, Q(3)10s, with topmark	11° 11'.9 S	152° 04'.4 E
	light beacon with west cardinal light beacon, Q(9)15s, with topmark	11° 13'.8 S	152° 10'.4 E
	light beacon with east cardinal light beacon, Q(3)10s, with topmark	11° 14'.3 S	152° 04'.8 E
Delete	light beacon	11° 15'.6 S	152° 10'.8 E

PNG 627 [258/2022]

Insert	west cardinal light beacon, Q(9)15s, with topmark	11° 15'.33 S	152° 10'.85 E
Replace	light beacon with east cardinal light beacon, Q(3)10s, with topmark	11° 11'.9 S	152° 04'.4 E
	light beacon with west cardinal light beacon, Q(9)15s, with topmark	11° 13'.8 S	152° 10'.4 E
	light beacon with east cardinal light beacon, Q(3)10s, with topmark	11° 14'.3 S	152° 04'.8 E
Delete	light beacon	11° 15'.6 S	152° 10'.8 E

931 PAPUA NEW GUINEA - Laughlan Islands to Nuratu Island - Light beacons

National Maritime Safety Authority PNG

PNG 514 [NC 16/10/2020]

Insert	light beacon, Fl(2)8s, with isolated danger topmark	9° 16'.84 S	153° 39'.38 E
--------	---	-------------	---------------

PNG 515 [NC 18/10/2019]

Insert	north cardinal light beacon, Q, with topmark	8° 37'.70 S	151° 18'.34 E
--------	--	-------------	---------------

PNG 516 [684/2022]

Insert	north cardinal light beacon, Q, with topmark	8° 37'.70 S	151° 18'.34 E
--------	--	-------------	---------------

PNG 637 (Kitava Island) [417/2022]

Insert	north cardinal light beacon, Q, with topmark	8° 37'.698 S	151° 18'.342 E
--------	--	--------------	----------------

932 PAPUA NEW GUINEA - McFarlane Harbour - Nav aids

National Maritime Safety Authority PNG

PNG 506 [1049/2021]

Insert	light beacon, Fl.G.6s, with starboard lateral topmark	10° 06'.58 S	148° 10'.71 E
Delete	beacon	10° 06'.1 S	148° 10'.3 E
	beacon	10° 06'.2 S	148° 10'.4 E

PNG 623 [1049/2021]

Insert	light beacon, Fl.G.6s, with starboard lateral topmark	10° 04'.789 S	148° 10'.696 E
	light beacon, Fl.R.6s, with port lateral topmark	10° 05'.082 S	148° 10'.445 E
	light beacon, Fl.G.6s, with starboard lateral topmark	10° 05'.561 S	148° 10'.256 E
	light beacon, Fl.G.6s, with starboard lateral topmark	10° 06'.577 S	148° 10'.710 E
Delete	depth, 1m	10° 06'.50 S	148° 10'.70 E

933 AUSTRALIA - WESTERN AUSTRALIA - North Head - Rocks

Ocean Infinity

Aus 323 [266/2022]

Insert	depth, 2 ₃ m, enclosed by danger circle with legend, R	16° 47'.53 S	122° 33'.14 E
	depth, 8 ₂ m, enclosed by danger circle with legend, R	16° 47'.87 S	122° 32'.59 E
Delete	depth, 11 ₈ m	16° 47'.7 S	122° 32'.5 E

934 AUSTRALIA - VICTORIA - Port Campbell - Restricted area southwards

NOPSEMA

Aus 349 [606/2022]

Insert accompanying block 39° 08'.0 S 142° 56'.0 E

Aus 787 [606/2022]

Insert accompanying block 39° 14'.0 S 142° 55'.0 E

935 AUSTRALIA - VICTORIA - Western Port - Hastings - Light

Parks Victoria

Aus 151 [866/2022]

Delete light 38° 18'.51 S 145° 11'.95 E

936 AUSTRALIA - TASMANIA - D'Entrecasteaux Channel - Green Island - Artificial reef*Former Notice - 854(T)/2022 is cancelled*

MMA Offshore

Aus 173 [869/2022]Insert fish haven with minimum depth, 11₆m, centred on 43° 12'.80 S 147° 18'.56 E**Aus 795 [869/2022]**Insert fish haven with minimum depth, 11₆m, centred on 43° 12'.80 S 147° 18'.56 E**Aus 796 [871/2022]**Insert fish haven with minimum depth, 11₆m, centred on 43° 12'.80 S 147° 18'.56 E**937 AUSTRALIA - TASMANIA - Hobart - Pavillion Point - Depth**

Veris

Aus 171 [658/2022]Replace depth, 4₆m, with depth, 4₄m 42° 52'.1 S 147° 20'.5 E**Aus 796 [936/2022]**Replace depth, 4₆m, with depth, 4₄m 42° 52'.1 S 147° 20'.5 E**938 AUSTRALIA - TASMANIA - King Island - Grassy Harbour - Light buoy**

Marine and Safety Tasmania Notice M380/2022

Aus 178 (Grassy Harbour) [227/2022]

Insert special cylindrical light buoy, FI(5)Y.20s, without topmark 40° 03'.918 S 144° 03'.660 E

939 AUSTRALIA - TASMANIA - King Island to Porpoise Shoal - Depths
CSIRO

Aus 487 [689/2022]

Insert	depth, 99m, enclosed by contour	39° 47'.89 S	143° 21'.08 E
	depth, 44m, and extend contour W to enclose	39° 48'.15 S	143° 47'.28 E
	depth, 100m, enclosed by contour	39° 53'.18 S	143° 27'.57 E
	depth, 49m, and extend contour SE to enclose	40° 11'.53 S	143° 48'.84 E
	depth, 35m, and extend contour S to enclose	40° 33'.38 S	144° 23'.03 E
Replace	depth, 22m, with depth, 19 ₆ m, enclosed by contour	39° 54'.4 S	143° 47'.9 E
	depth, 45m, with depth, 43m	40° 35'.9 S	144° 23'.1 E
	depth, 48m, with depth, 40m	40° 43'.2 S	144° 22'.1 E
Delete	depth, 31m	39° 48'.2 S	143° 48'.9 E
	depth, 30 ₉ m	40° 11'.0 S	143° 47'.4 E
	depth, 39m	40° 33'.2 S	144° 20'.3 E

Aus 789 [200/2022]

Insert	depth, 44m, and extend contour W to enclose	39° 48'.15 S	143° 47'.28 E
	depth, 17 ₅ m, and extend contour W to enclose	39° 52'.49 S	143° 46'.93 E
	depth, 19 ₆ m, enclosed by contour	39° 54'.40 S	143° 47'.90 E
	depth, 19 ₇ m, enclosed by contour	39° 54'.80 S	143° 48'.24 E
	depth, 13 ₈ m	39° 55'.35 S	143° 49'.02 E
	depth, 32m, and extend contour W to enclose	40° 10'.04 S	143° 46'.59 E
Delete	depth, 22m	39° 54'.4 S	143° 47'.9 E
	depth, 33m	40° 09'.8 S	143° 46'.9 E

Aus 790 [780/2022]

Insert	depth, 35m, and extend contour S to enclose	40° 33'.38 S	144° 23'.03 E
	depth, 43m	40° 35'.86 S	144° 23'.11 E
	depth, 40m, and extend contour SW to enclose	40° 43'.45 S	144° 21'.71 E
Delete	depth, 45m	40° 35'.8 S	144° 23'.5 E
	depth, 48m	40° 43'.2 S	144° 22'.1 E

940 AUSTRALIA - TASMANIA - Port Dalrymple - Sea Reach to Inspection Head - Depths

Veris

Aus 167 [870/2022]

Insert	contour, between	41° 09'.021 S	146° 49'.625 E
		41° 09'.078 S	146° 49'.589 E
		41° 09'.180 S	146° 49'.628 E
	depth, 5 ₈ m	41° 04'.434 S	146° 47'.802 E
	depth, 5 ₃ m	41° 04'.450 S	146° 47'.918 E
	depth, 7 ₇ m	41° 06'.746 S	146° 49'.140 E
Replace	depth, 10 ₉ m, with depth, 10 ₆ m	41° 05'.66 S	146° 48'.14 E
Delete	contour, between	41° 09'.02 S	146° 49'.63 E
		41° 09'.18 S	146° 49'.63 E
	depth, 6 ₁ m	41° 04'.42 S	146° 47'.87 E
	depth, 19 ₉ m, and enclosing contour	41° 06'.60 S	146° 48'.74 E
	depth, 8 ₃ m	41° 06'.68 S	146° 49'.21 E
Aus 167 (Bell Bay) [870/2022]			
Insert	depth, 9 ₈ m, and extend contour W to enclose	41° 09'.083 S	146° 49'.597 E
Delete	depth, 10 ₄ m	41° 09'.07 S	146° 49'.60 E

941(T)/2022 AUSTRALIA - QUEENSLAND - Bundaberg - Middle Reach - Shoaling charted

Former Notice - 605(T)/2016 is cancelled
Australian Hydrographic Office

Cancel this notice on receipt.

Chart formerly affected - Aus 242

942(T)/2022 AUSTRALIA - QUEENSLAND - Cumberland Islands to Hydrographers Passage - Survey operations completed

Former Notice - 694(T)/2022 is cancelled
EGS Survey Pty Ltd

Cancel this notice on receipt.

Chart formerly affected - Aus 249 - Aus 251 - Aus 367 - Aus 821 - Aus 823 - Aus 824

943(T)/2022 AUSTRALIA - QUEENSLAND - Fitzalan Passage - Light buoy relit

Former Notice - 695(T)/2022 is cancelled
Maritime Safety Queensland

Cancel this notice on receipt.

Chart formerly affected - Aus 252 - Aus 253 - Aus 254

944(T)/2022 AUSTRALIA - QUEENSLAND - Hydrographers Passage - Scientific instrument

EGS Survey Pty Ltd

A scientific instrument exists on the seabed in position 20° 17'.4 S 150° 19'.0 E.

Chart temporarily affected - Aus 821

945(T)/2022 AUSTRALIA - QUEENSLAND - Keppel Isles - North Keppel Island - Scientific instruments

Australian Institute of Marine Science

6 lit blue rafts exist in the vicinity of position 23° 04'.35 S 150° 52'.82 E.

Chart temporarily affected - Aus 820

946(T)/2022 AUSTRALIA - QUEENSLAND - Moreton Bay - Redcliffe - Light buoy unlit

Maritime Safety Queensland Notice 494(T)/2022

The starboard lateral light buoy, *Fl.G.4s* (27° 13'.23 S 153° 07'.27 E), is unlit.

Chart temporarily affected - Aus 236

947(T)/2022 AUSTRALIA - QUEENSLAND - Rattlesnake Island - Live firing

Maritime Safety Queensland Notice 462(T)/2022, 473(T)/2022

Live firing activities will be conducted within a 5M radius of position 19° 02'.27 S 146° 36'.43 E during the period 16 to 17 November 2022 and 21 November to 2 December 2022.

Mariners are advised to navigate with caution and keep well clear of the area.

Chart temporarily affected - Aus 256 - Aus 827

948(T)/2022 AUSTRALIA - QUEENSLAND - Shoalwater Bay - Live firing
Maritime Safety Queensland Notice 453(T)/2022

Live firing will be conducted in the marine component of the Shoalwater Bay training area during the period 21 November to 7 December 2022.

A marine danger area extends to all internal waters bounded by the following positions:

22° 24'.52 S 150° 24'.57 E
22° 25'.03 S 150° 37'.11 E
22° 09'.00 S 150° 37'.00 E
22° 09'.00 S 150° 25'.00 E.

All waters, creeks, beaches and other areas within the declared marine danger area are not available for access.

There will be a safe anchorage available at Freshwater, Port Clinton, West Water Port Clinton, South Arm Port Clinton, Pearl Bay and Island Head Creek.

Mariners are advised to keep clear of this area throughout the above times.

Chart temporarily affected - Aus 260 - Aus 367 - Aus 822

949(T)/2022 AUSTRALIA - WESTERN AUSTRALIA - Barrow Island - Drill rig northwestwards
MODU *Noble Tom Prosser*

Drill rig *Noble Tom Prosser* is conducting drilling operations in position 20° 32'.07 S 115° 14'.86 E.

Chart temporarily affected - Aus 328 - Aus 742

950(T)/2022 AUSTRALIA - WESTERN AUSTRALIA - Barrow Island - Subsea operations northwestwards completed
Former Notice - 538(T)/2022 is cancelled
Australian Maritime Safety Authority

Cancel this notice on receipt.

Chart formerly affected - Aus 328

951(T)/2022 AUSTRALIA - WESTERN AUSTRALIA - Direction Bank - Subsea operations
Blue Ocean Marine Tech Systems

An AUV is conducting subsea operations in an area bounded by the following positions:

32° 05'.0 S 114° 30'.0S
32° 05'.0 S 115° 20'.0S
31° 50'.0 S 115° 20'.0S
31° 50'.0 S 115° 30'.0S
31° 24'.5 S 115° 30'.0S
31° 24'.5 S 114° 30'.0S.

Mariners are advised to navigate with caution in the area.

Chart temporarily affected - Aus 754 - Aus 4708 (INT 708) - Aus 4709 (INT 709)

952(T)/2022 AUSTRALIA - WESTERN AUSTRALIA - Exmouth Plateau - Survey operations
Shearwater

MV *Geo Coral*, with an 8334m towed array, and support vessels *Mariska G* and *Empress* are conducting survey operations in an area bounded by the following positions:

20° 24'.03 S 113° 06'.75 E
19° 59'.97 S 112° 36'.13 E
19° 20'.66 S 113° 06'.69 E
19° 13'.42 S 113° 33'.82 E
19° 29'.69 S 113° 54'.53 E
19° 54'.70 S 113° 37'.67 E.

Mariners are advised to navigate with caution in the area. 6M clearance requested.

Chart temporarily affected - Aus 328 - Aus 329 - Aus 4723 (INT 723)

953(T)/2022 AUSTRALIA - WESTERN AUSTRALIA - Lesuer Island - Survey operations northeastwards completed
Former Notice - 906(T)/2022 is cancelled
Northern Territory Government

Cancel this notice on receipt.

Chart formerly affected - Aus 315 - Aus 318

954(T)/2022 AUSTRALIA - WESTERN AUSTRALIA - Montebello Islands - Well plug and abandonment works northwestwards completed

Former Notice - 581(T)/2022 is cancelled
MODU *Ocean Apex*

Cancel this notice on receipt.

Chart formerly affected - Aus 328 - Aus 742

955(T)/2022 AUSTRALIA - WESTERN AUSTRALIA - Montebello Islands - Scientific instrument westwards
RPS Group

An orange spherical light buoy, Q(5)Y.20s, exists in position 20° 32'.45 S 115° 14'.47 E.

Chart temporarily affected - Aus 328 - Aus 742

956(T)/2022 AUSTRALIA - WESTERN AUSTRALIA - Montebello Islands - Subsea operations northwestwards completed

Former Notice - 844(T)/2022 is cancelled
Woodside Energy Ltd

Cancel this notice on receipt.

Chart formerly affected - Aus 328

957(T)/2022 AUSTRALIA - WESTERN AUSTRALIA - North West Cape - Drill rig northwards
MODU *Ocean Apex*

Drill rig *Ocean Apex* is conducting drilling operations in position 21° 32'.72 S 114° 05'.71 E.

Chart temporarily affected - Aus 328 - Aus 329 - Aus 744

958(T)/2022 AUSTRALIA - WESTERN AUSTRALIA - Osborn Reefs - Wreck

Former Notice - 34(T)/2022 is cancelled
Department of Defence

A wreck, least depth 17₃m, exists in position 15° 09'.81 S 124° 13'.46 E.

Chart temporarily affected - Aus 320 - Aus 730

959(T)/2022 AUSTRALIA - VICTORIA - Golden Beach - Scientific instrument recovered

Former Notice - 1231(T)/2019 is cancelled
CSIRO

Cancel this notice on receipt.

Chart formerly affected - Aus 357

960(T)/2022 AUSTRALIA - VICTORIA - Port Phillip - Mordialloc - Light buoy restored

Former Notice - 86(T)/2022 is cancelled
Parks Victoria Notice 391/2022

Cancel this notice on receipt.

Chart formerly affected - Aus 143 - Aus 155

961(T)/2022 AUSTRALIA - VICTORIA - Port Phillip - Mordialloc - Light buoy unlit

Parks Victoria Notice 392(T)/2022

The special light buoy, *Fl. Y.5s* (38° 01'.70 S 145° 04'.21 E), is unlit.

Chart temporarily affected - Aus 143 - Aus 155

962(T)/2022 AUSTRALIA - TASMANIA - River Derwent - Bowen Bridge - Harbour works

Marine and Safety Tasmania Notice M383(T)/2022

Works are in progress in an area bounded by the coast and the following:

<i>Positions</i>	<i>Remarks</i>
42° 49'.60 S 147° 18'.28 E	
42° 49'.55 S 147° 18'.20 E	
42° 49'.50 S 147° 18'.27 E	marked by special buoy
42° 49'.55 S 147° 18'.36 E	marked by special buoy
42° 49'.59 S 147° 18'.32 E.	

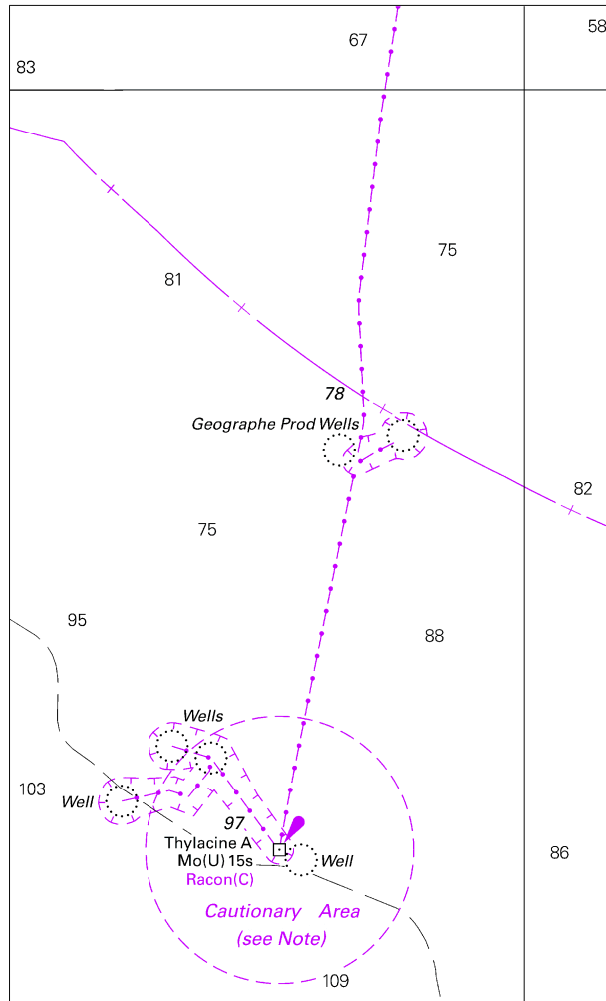
Mariners are advised to navigate with caution in the area and keep well clear.

Chart temporarily affected - Aus 171

HYDROGRAPHIC REPORTS

<i>Locality</i>	<i>Report</i>	<i>Ship/Authority</i>	<i>Observer</i>
WA- North Head	Rocks	<i>MV Outer Limit</i>	A Price

To accompany Australian Notice to Mariners 934/2022

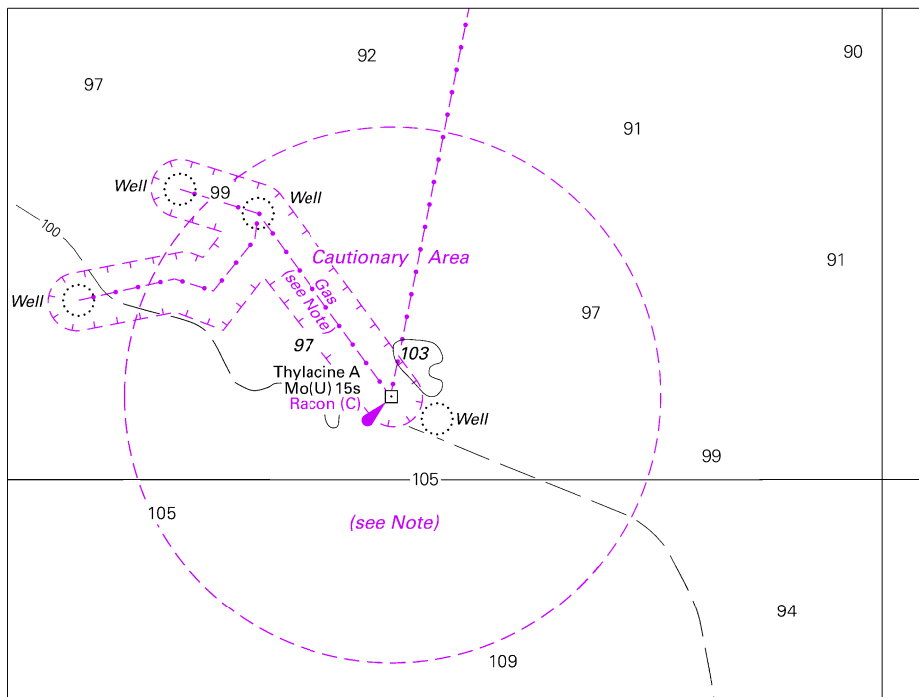


Block for chart 349

(80.0 x 132.1mm)

© Commonwealth of Australia 2022

To accompany Australian Notice to Mariners 934/2022



Block for chart 787

© Commonwealth of Australia 2022

(121.7 x 91.4mm)