



16 September 2022

Edition 19

AUSTRALIAN NOTICES TO MARINERS

Notices 707 - 763

Published fortnightly by the Australian Hydrographic Office



Australian Notices to Mariners are the authority for correcting charts and publications published by the Australian Hydrographic Office covering Australia, Papua New Guinea, Solomon Islands, Australian Antarctic Territory and Timor-Leste.

Commodore S.T. DUNNE RAN
Hydrographer of Australia

SECTIONS.

- I. **Australian Notices to Mariners, including blocks and notes.**
- II. **Hydrographic Reports.**

SUPPLEMENTS.

- I. **Tracings**
- II. **Cumulative List of Australian Notices to Mariners.**
- III. **Cumulative List of Temporary and Preliminary Australian Notices to Mariners.**
- IV. **Temporary and Preliminary Notices in force.**

© Commonwealth of Australia 2022

This work is copyright. Apart from any use permitted under the Copyright Act 1968, no part may be reproduced by any process, adapted, communicated or commercially exploited without prior written permission from The Commonwealth represented by the Australian Hydrographic Office.

IMPORTANT NOTICE

This edition of Notices to Mariners includes all significant information affecting AHO products which the AHO has become aware of since the last edition. All reasonable efforts have been made to ensure the accuracy and completeness of the information, including third party information, on which these updates are based. The AHO regards third parties from which it receives information as reliable, however the AHO cannot verify all such information and errors may therefore exist. The AHO does not accept liability for errors in third party information.

GENERAL INSTRUCTIONS

The substance of these notices should be inserted on the charts affected.

Bearings are referred to the true compass and are reckoned clockwise from North; those relating to lights are given as seen by an observer from seaward.

Positions quoted in notices relate to WGS84 which is the horizontal datum for all charts produced by the Australian Hydrographic Office.

The range quoted for a light is its nominal range.

Depths are with reference to the chart datum of each chart. Heights are above mean high water springs or mean higher high water, as appropriate.

The capital letter (P) or (T) after the number of any notice denotes a preliminary or temporary notice respectively, which are contained separately at the end of the permanent notices.

REPORTING OF DANGERS

Mariners are particularly requested to notify the AUSTRALIAN HYDROGRAPHIC OFFICE, Locked Bag 8801 Wollongong, NSW 2500 (Fax 02-4223 6599, e-mail datacentre@hydro.gov.au or, alternatively by filling in and submitting the [Hydrographic Notes](#) forms located on the web site – www.hydro.gov.au), immediately on the discovery of new dangers or suspected dangers to navigation. For changes or defects in aids to navigation notify AusSAR (Fax 02-6230 6868 or email rccaus@amsa.gov.au).

AUTHORISED USE

Copies of Australian notices are available free of charge from the Australian Hydrographic Office (AHO) website (www.hydro.gov.au) and through the eNotices (email) service (www.hydro.gov.au/enotices/enotices.htm).

Individual Notices may be copied for the purpose of inserting Notice substance on official charts and publications. Paper copies may be printed by chart agents and distributed to customers on a cost recovery basis. Participating chart agents are listed on the AHO website as providing a 'Paper Notices to Mariners' service (www.hydro.gov.au/webapps/jsp/agents/agents-list.jsp). Copies of the notices may not be sold for profit without prior written agreement.

NUMERICAL INDEX OF NOTICES TO MARINERS

Edition No 19

Notices	Aus Chart, INT Chart, ENC Cell, AHP, BA Pubs
707	Aus 743, 744, 4601, 4643, 4644, INT 601, 643, 644
708	Aus 72, 235, 238, 814, 815, 4620, 4621, 4623, 4634, 4720, 4721, INT 620, 621, 623, 634, 720, 721
709	Aus 204, 489, 809
710	Aus 808, 809
711	Aus 252
712	Aus 4602, INT 602
713	Aus 260, 822
714	Aus 4
715	PNG 662
716	Aus 312, 4721, INT 721
717	Aus 755
718	Aus 117
719	Aus 119
720	Aus 776, 777
721	Aus 163
722	SLB 102, 301, 302
723	SLB 101
724	SLB 107
725	Aus 4604, INT 604, SLB 304, 305
726(T)	Aus 222, 812, 813
727(T)	Aus 489, 806, 807, 808, 809, 810, 4601, 4602, INT 601, 602
728(T)	Aus 489, 806, 807, 808, 809, 810, 4601, 4602, 4643, INT 601, 602, 643
729(T)	Aus 252, 253
730(T)	Aus 246
731(T)	Aus 238
732(T)	Aus 242
733(T)	Aus 262
734(T)	Aus 262, 830
735(T)	Aus 262
736(T)	Aus 236
737(T)	Aus 256, 827
738(T)	Aus 507, 4620, 4621, INT 620, 621
739(T)	Aus 4622, INT 622, PNG 397, 398, 554, 668
740(T)	Aus 20, 720, 721
741(T)	Aus 25, 309, 316
742(T)	Aus 320, 729, 730
743(T)	Aus 57, 327, 742
744(T)	Aus 117
745(T)	Aus 746
746(T)	Aus 64, 743
747(T)	Aus 357, 487
748(T)	Aus 357, 487, 4644, INT 644
749(T)	Aus 144
750(T)	Aus 357, 487, 4601, INT 601
751(T)	Aus 357, 487, 4601, 4644, INT 601, 644
752(T)	Aus 357, 487, 4601, INT 601
753(T)	Aus 357, 487, 4601, 4644, INT 601, 644
754(T)	Aus 357, 487
755(T)	Aus 357, 487, 4644, INT 644
756(T)	Aus 171
757(T)	Aus 168
758(T)	SLB 303, 304
759(T)	Aus 4604, 4623, 4634, INT 604, 623, 634, SLB 304, 305
760(T)	Aus 4623, 4634, INT 623, 634, SLB 202, 302
761(T)	Aus 4623, INT 623, SLB 107
762(T)	SLB 102
763(T)	Aus 4623, 4634, INT 623, 634, SLB 305

NUMERICAL INDEX OF CHARTS AFFECTED

Edition No 19

Aus Chart	Notices
Aus 4	714
Aus 20	740(T)
Aus 25	741(T)
Aus 57	743(T)
Aus 64	746(T)
Aus 72	708
Aus 117	718, 744(T)
Aus 119	719
Aus 144	749(T)
Aus 163	721
Aus 168	757(T)
Aus 171	756(T)
Aus 204	709
Aus 222	726(T)
Aus 235	708
Aus 236	736(T)
Aus 238	708, 731(T)
Aus 242	732(T)
Aus 246	730(T)
Aus 252	711, 729(T)
Aus 253	729(T)
Aus 256	737(T)
Aus 260	713
Aus 262	733(T), 734(T), 735(T)
Aus 309	741(T)
Aus 312	716
Aus 316	741(T)
Aus 320	742(T)
Aus 327	743(T)
Aus 357	747(T), 748(T), 750(T), 751(T), 752(T), 753(T), 754(T), 755(T)
Aus 487	747(T), 748(T), 750(T), 751(T), 752(T), 753(T), 754(T), 755(T)
Aus 489	709, 727(T), 728(T)
Aus 507	738(T)
Aus 720	740(T)
Aus 721	740(T)
Aus 729	742(T)
Aus 730	742(T)
Aus 742	743(T)
Aus 743	707, 746(T)
Aus 744	707
Aus 746	745(T)
Aus 755	717
Aus 776	720
Aus 777	720
Aus 806	727(T), 728(T)
Aus 807	727(T), 728(T)
Aus 808	710, 727(T), 728(T)
Aus 809	709, 710, 727(T), 728(T)
Aus 810	727(T), 728(T)
Aus 812	726(T)
Aus 813	726(T)
Aus 814	708
Aus 815	708
Aus 822	713

Aus Chart	Notices
Aus 827	737(T)
Aus 830	734(T)
Aus 4601	707, 727(T), 728(T), 750(T), 751(T), 752(T), 753(T)
Aus 4602	712, 727(T), 728(T)
Aus 4604	725, 759(T)
Aus 4620	708, 738(T)
Aus 4621	708, 738(T)
Aus 4622	739(T)
Aus 4623	708, 759(T), 760(T), 761(T), 763(T)
Aus 4634	708, 759(T), 760(T), 763(T)
Aus 4643	707, 728(T)
Aus 4644	707, 748(T), 751(T), 753(T), 755(T)
Aus 4720	708
Aus 4721	708, 716
PNG 397	739(T)
PNG 398	739(T)
PNG 554	739(T)
PNG 662	715
PNG 668	739(T)
SLB 101	723
SLB 102	722, 762(T)
SLB 107	724, 761(T)
SLB 202	760(T)
SLB 301	722
SLB 302	722, 760(T)
SLB 303	758(T)
SLB 304	725, 758(T), 759(T)
SLB 305	725, 759(T), 763(T)

INT Chart	Notices
INT 601	707, 727(T), 728(T), 750(T), 751(T), 752(T), 753(T)
INT 602	712, 727(T), 728(T)
INT 604	725, 759(T)
INT 620	708, 738(T)
INT 621	708, 738(T)
INT 622	739(T)
INT 623	708, 759(T), 760(T), 761(T), 763(T)
INT 634	708, 759(T), 760(T), 763(T)
INT 643	707, 728(T)
INT 644	707, 748(T), 751(T), 753(T), 755(T)
INT 720	708
INT 721	708, 716

707 AUSTRALIA - Products - New Charts, New Editions, Withdrawn Charts

Australian Hydrographic Office , UKHO

New Charts

Chart	Title and Geographical limits	Scale	Publication Date	Remarks
NIL				

New Electronic Navigation Chart (Aus ENC)

Cell Name	Title	Publication Date	Remarks
AU5SBA01	Australia - Queensland - Shoalwater Bay - North Channel	15 September 2022	AU5261P1 has been withdrawn.
AU5SBA02	Australia - Queensland - Shoalwater Bay - Sabina Point	15 September 2022	AU5261P2 has been withdrawn.

New Editions and Withdrawn Charts

Chart	Title	Scale	Publication Date	Remarks
Aus 743 (Edition 3)	Australia - North West Coast - Western Australia - Barrow Island to Onslow	1:150 000	16 September 2022	New edition with general updating throughout; including latest bathymetric data. Chart Aus 743 Edition 2 dated 5 December 2014 is now superseded and must be withdrawn from use.
Aus 744 (Edition 5)	Australia - North West Coast - Western Australia - Exmouth Gulf and Approaches	1:150 000	16 September 2022	New edition with general updating throughout; including latest bathymetric data. Chart Aus 744 Edition 4 dated 5 December 2014 is now superseded and must be withdrawn from use.
Aus 4601 (INT 601) (Edition 7)	South Pacific Ocean - Tasman Sea - New Zealand to South East Australia	1:3 500 000	16 September 2022	New edition with general updating throughout; including latest bathymetric data. Produced with blue contours. Chart Aus 4601 Edition 6 dated 20 August 2004 is now superseded and must be withdrawn from use.

Charts withdrawn without replacement

Chart	Title	Scale	Remarks
Aus 4643 (INT 643) Edition 1	Australia - East Coast - Cape Howe to Cape Moreton	1:1 500 000	24 September 2010 Paper chart rationalisation.
Aus 4644 (INT 644) Edition 1	Southern Ocean - Cape Otway to Cape Howe including Tasmania	1:1 500 000	24 September 2010 Paper chart rationalisation.

Admiralty publication

NP No	Title	Date	Remarks
NP204-2023	ADMIRALTY Tide Tables	15/09/2022	New Edition.

16 September 2022

707

AUSTRALIA - Products - New Charts, New Editions, Withdrawn Charts

South Pacific Ocean
(Including Tidal Stream Tables)
Volume 4, 2023 Edition.

Chart permanently withdrawn

Charts listed above as withdrawn no longer meet chart carriage requirements and should be marked as "superseded" and replaced with the new chart/ new edition listed prior to passage through the area covered by the new chart.

When placing orders with a chart agent between notice of forthcoming edition and its publication, mariners should advise whether their order pertains to the current edition or the new edition.

For further details refer to the AHO website at www.hydro.gov.au for new edition and new chart stock arrival information.

708 AUSTRALIA - Products - New Charts and New Editions to be published shortly

Australian Hydrographic Office

New Charts to be published shortly

Chart	Title	Scale	Remarks
NIL			

New Editions to be published shortly

Chart	Title	Scale	Remarks
Aus 814	Australia - East Coast - Queensland - Point Danger to Cape Moreton	1:150 000	New edition with general updating throughout; including new bathymetric data.
Aus 815	Australia - East Coast - Queensland - Cape Moreton to Double Island Point	1:150 000	New edition with general updating throughout; including new bathymetric data.

Charts to be withdrawn without replacement 30 September 2022

Chart	Title	Scale	Remarks
Aus 235 Edition 6	Australia - East Coast - Queensland - Approaches to Moreton Bay Plan: Mooloolaba Harbour	1:75 000 1:10 000	10 February 2017 Paper chart rationalisation.
Aus 238 Edition 6	Australia - East Coast - Queensland - Brisbane River - Lytton Reach to Victoria Bridge Plans: South Brisbane Reach Town Reach and Shafston Reach Bulimba Reach Hamilton Reach	1:12 500 1:5 000 1:5 000 1:7 500 1:7 500	31 May 2013 Paper chart rationalisation.
Aus 4620 (INT 620) Edition 7	Australia - Papua New Guinea - Percy Isles to Booby Island including Gulf of Papua	1:1 500 000	18 December 2015 Paper chart rationalisation.
Aus 4621 (INT 621) Edition 6	Coral and Solomon Seas - Mackay to Solomon Islands	1:1 500 000	22 September 2017 Paper chart rationalisation.
Aus 4623 (INT 623) Edition 1	South Pacific Ocean - Solomon Islands - Solomon Islands to Kosrae Island	1:1 500 000	11 August 2017 Paper chart rationalisation.
Aus 4634 (INT 634) Edition 1	South Pacific Ocean - Solomon Islands - Frederick Reefs to Solomon Islands	1:1 500 000	11 August 2017 Paper chart rationalisation.
Aus 4720 (INT 720) Edition 3	Australia - North Coast - Booby Island to Cape Wessel including Gulf of Carpentaria	1:1 500 000	6 June 2008 Paper chart rationalisation.
Aus 4721 (INT 721) Edition 2	Australia - North Coast - Cape Wessel to Adele Island including Adjacent Waters	1:1 500 000	6 June 2008 Paper chart rationalisation.

708 AUSTRALIA - Products - New Charts and New Editions to be published shortly
Charts to be withdrawn without replacement 2 December 2022

Aus 72	Australia - West Coast - Western Australia - Plans in Western	26 August 2011
Edition 1	Australia (Sheet 3)	
	Plans:	Paper chart
	Norwegian Bay and Point Cloates	1:50 000
	Mauds Landing	1:37 500
	Point Murat Wharf	1:12 500
	Exmouth Boat Harbour	1:10 000
		rationalisation.

709 AUSTRALIA - NEW SOUTH WALES - North Avoca Beach - Wreck eastwards

Department of Primary Industries

Aus 204 [594/2022]

Replace	wreck depth, 43m, with wreck depth, 48m	33° 27'.5 S	151° 30'.8 E
---------	---	-------------	--------------

Aus 489 [596/2022]

Replace	wreck depth, 43m, with wreck depth, 48m	33° 27'.5 S	151° 30'.8 E
---------	---	-------------	--------------

Aus 809 [515/2022]

Replace	wreck depth, 43m, with wreck depth, 48m	33° 27'.5 S	151° 30'.8 E
---------	---	-------------	--------------

710 AUSTRALIA - NEW SOUTH WALES - Sydney - Submarine cables

33 Below Pty Ltd

Aus 808 [595/2022]

Insert submarine cable, between

33° 54'.04 S	151° 16'.25 E
33° 54'.36 S	151° 16'.59 E
33° 54'.44 S	151° 18'.53 E
33° 54'.60 S	151° 19'.00 E
33° 55'.74 S	151° 20'.75 E
33° 56'.30 S	151° 21'.35 E
33° 56'.61 S	151° 22'.12 E
33° 56'.91 S	151° 22'.48 E
33° 57'.22 S	151° 22'.70 E
33° 57'.86 S	151° 22'.97 E
33° 58'.23 S	151° 23'.34 E
33° 58'.79 S	151° 24'.10 E
33° 59'.76 S	151° 25'.62 E
33° 59'.98 S	151° 25'.89 E
34° 00'.36 S	151° 26'.17 E
34° 00'.66 S	151° 26'.21 E
34° 01'.60 S	151° 26'.00 E
34° 02'.53 S	151° 25'.86 E
34° 02'.77 S	151° 25'.99 E
34° 03'.19 S	151° 26'.37 E
34° 07'.66 S	151° 31'.30 E
34° 09'.12 S	151° 32'.66 E
34° 10'.74 S	151° 35'.44 E
34° 12'.18 S	151° 37'.12 E
34° 14'.89 S	151° 39'.37 E

Aus 809 [709/2022]

Insert submarine cable, between

submarine cable, between

33° 43'.03 S	151° 18'.03 E
33° 43'.05 S	151° 18'.66 E
33° 43'.21 S	151° 19'.02 E
33° 43'.48 S	151° 19'.38 E
33° 42'.71 S	151° 20'.30 E
33° 42'.60 S	151° 20'.40 E
33° 42'.46 S	151° 20'.68 E
33° 42'.50 S	151° 21'.22 E
33° 42'.75 S	151° 22'.14 E
33° 42'.71 S	151° 22'.49 E
33° 42'.15 S	151° 23'.60 E
33° 42'.17 S	151° 23'.97 E
33° 42'.98 S	151° 26'.28 E
33° 43'.18 S	151° 27'.69 E
33° 43'.30 S	151° 33'.59 E
33° 43'.29 S	151° 38'.74 E
33° 43'.49 S	151° 39'.33 E
33° 44'.60 S	151° 40'.25 E
33° 44'.87 S	151° 40'.75 E
33° 44'.97 S	151° 41'.69 E
33° 45'.64 S	151° 57'.83 E
33° 45'.45 S	152° 01'.02 E
33° 45'.52 S	152° 03'.66 E
33° 46'.19 S	152° 06'.39 E
33° 47'.94 S	152° 09'.49 E
33° 52'.00 S	152° 13'.71 E
33° 52'.48 S	152° 14'.37 E

711 AUSTRALIA - QUEENSLAND - Airlie Beach - Muddy Bay - Wreck

Maritime Safety Queensland

Aus 252 [683/2022]

Delete stranded wreck

20° 16'.0 S	148° 43'.4 E
-------------	--------------

712 AUSTRALIA - QUEENSLAND - North Stradbroke Island - Scientific instruments northeastwards
CSIRO

Aus 4602 (INT 602) [NE 19/8/2022]

Insert	depth, 40m, enclosed by danger circle, with legend ODAS	27° 12'.5 S	154° 38'.8 E
	depth, 40m, enclosed by danger circle, with legend ODAS	27° 15'.0 S	154° 17'.8 E
	depth, 40m, enclosed by danger circle, with legend ODAS	27° 17'.1 S	154° 08'.1 E

713 AUSTRALIA - QUEENSLAND - Shoalwater Bay - North Channel - Depths
HMAS *Melville*

Aus 260 [NE 4/3/2022]

Insert	depth, 23 ₄ m	22° 10'.96 S	150° 23'.50 E
	depth, 24 ₁ m	22° 11'.60 S	150° 23'.49 E
	depth, 27m	22° 12'.52 S	150° 23'.44 E
	depth, 22 ₂ m	22° 12'.91 S	150° 23'.07 E
	depth, 25 ₂ m	22° 13'.59 S	150° 23'.34 E

Delete	depth, 20 ₉ m	22° 11'.8 S	150° 23'.3 E
	depth, 26 ₄ m	22° 13'.4 S	150° 23'.4 E
	depth, 34m	22° 13'.7 S	150° 23'.1 E

Aus 822 [730/2021]

Replace	depth, 23 ₉ m, with depth, 25 ₃ m	22° 13'.0 S	150° 23'.7 E
---------	---	-------------	--------------

714 AUSTRALIA - QUEENSLAND - Weipa - Lorim Point Wharf - Obstruction
Australian Hydrographic Surveys Pty Ltd

Aus 4 (Weipa) [557/2022]

Delete	#, centred on	12° 40'.37 S	141° 52'.21 E
--------	---------------	--------------	---------------

715 PAPUA NEW GUINEA - Seeadler Harbour - Depths
HMAS *Melville*

PNG 662 [1050/2021]

Insert	depth, 19 ₁ m, enclosed by contour	1° 58'.686 S	147° 19'.196 E
	contour to enclose depth, 19 ₉ m	1° 58'.800 S	147° 19'.280 E

716 AUSTRALIA - TIMOR SEA - Sahul Banks - Wells; anchorage
Former Notice - 223(T)/2009 is cancelled
Santos

Aus 312 [347/2022]

Delete	anchorage, centred on	10° 43'.8 S	126° 43'.1 E
	danger circles with legend, Wells	10° 51'.0 S	126° 28'.2 E
	danger circle with legend, Well	10° 52'.7 S	126° 35'.1 E
	danger circle with legend, Well	10° 53'.0 S	126° 32'.1 E
	danger circle with legend, Well	10° 53'.0 S	126° 36'.0 E

Aus 4721 (INT 721) [558/2022]

Delete	anchorage, centred on	10° 43'.8 S	126° 43'.1 E
	danger circle with legend, Well	10° 51'.0 S	126° 28'.2 E

717 AUSTRALIA - WESTERN AUSTRALIA - Busselton - Light beacon
Department of Transport WA

Aus 755 [261/2022]

Delete	light beacon	33° 38'.3 S	115° 20'.7 E
--------	--------------	-------------	--------------

718 AUSTRALIA - WESTERN AUSTRALIA - Fremantle - Owen Anchorage - Light buoys

Department of Transport WA Notice WA001/84/2022

Aus 117 [382/2022]

Insert	special spar light buoy, <i>Fl. Y.3s</i> , without topmark	32° 06'.410 S	115° 45'.680 E
Amend	light buoy to <i>Fl. Y.3s</i>	32° 06'.36 S	115° 45'.55 E

719 AUSTRALIA - WESTERN AUSTRALIA - Twilight Beach - Scientific instruments

Department of Transport WA

Aus 119 [108/2022]

Insert	special spar light buoy, <i>Fl. Y.4s</i> , without topmark	33° 53'.58 S	121° 49'.73 E
	out of position special spar light buoy, <i>Fl. Y.4s</i> , without topmark	33° 53'.86 S	121° 49'.67 E

720 AUSTRALIA - SOUTH AUSTRALIA - Wardang Island - Light

Department for Infrastructure and Transport SA Notice 28/2022

Aus 776 [110/2022]

Insert	light, <i>Fl.3s</i>	34° 28'.10 S	137° 22'.49 E
--------	---------------------	--------------	---------------

Aus 777 [113/2022]

Insert	light, <i>Fl.3s</i>	34° 28'.10 S	137° 22'.49 E
--------	---------------------	--------------	---------------

721 AUSTRALIA - TASMANIA - Burnie - Depths

Veris

Aus 163 [527/2022]

Insert	depth, <i>4₉m</i> , enclosed by contour	41° 03'.442 S	145° 55'.113 E
	depth, <i>3₉m</i> , and extend contour NE to enclose	41° 03'.512 S	145° 55'.260 E
Delete	depth, <i>4₆m</i>	41° 03'.57 S	145° 55'.22 E

Aus 163 (Burnie) [527/2022]

Insert	depth, <i>4₉m</i> , enclosed by contour	41° 03'.375 S	145° 55'.023 E
	depth, <i>4₈m</i> , enclosed by contour	41° 03'.442 S	145° 55'.113 E
	depth, <i>1₉m</i> , enclosed by contour	41° 03'.564 S	145° 54'.975 E
Replace	depth, <i>5₁m</i> , with depth, <i>4₆m</i> , enclosed by contour	41° 03'.44 S	145° 55'.07 E
	depth, <i>5₅m</i> , with depth, <i>3₉m</i> , enclosed by contour	41° 03'.51 S	145° 55'.26 E
	depth, <i>4₆m</i> , with depth, <i>4₁m</i>	41° 03'.57 S	145° 55'.22 E
	depth, <i>5₆m</i> , with depth, <i>4₁m</i> , enclosed by contour	41° 03'.58 S	145° 55'.26 E

722 SOLOMON ISLANDS - Ghizo Island - Nega Point - Nav aids

Former Notice - 682(T)/2017 is cancelled

Solomon Islands Maritime Safety Administration

SLB 102 (Gizo Harbour and Approaches) [839/2021]

Delete	light beacon	8° 04'.07 S	156° 50'.23 E
	light beacon	8° 04'.42 S	156° 50'.10 E
	dashed and continuous line with legend, 201°, emanating from light beacon	8° 04'.42 S	156° 50'.10 E

SLB 301 [146/2022]

Delete	light	8° 04'.4 S	156° 50'.1 E
--------	-------	------------	--------------

SLB 302 [246/2020]

Delete	light	8° 04'.4 S	156° 50'.1 E
--------	-------	------------	--------------

723 SOLOMON ISLANDS - Marau Sound - Navais

Former Notice - 680(T)/2017 is cancelled
Solomon Islands Maritime Authority

SLB 101 (Marau Sound) [692/2022]

Delete	light beacon	9° 48'.5 S	160° 49'.9 E
	light beacon	9° 48'.9 S	160° 49'.8 E
	dashed and continuous line with legend, 203°, emanating from light beacon	9° 48'.9 S	160° 49'.8 E
	light beacon	9° 49'.9 S	160° 49'.5 E
	light beacon	9° 50'.8 S	160° 51'.3 E
	dashed and continuous line with legend, 006-6°, emanating from light beacon	9° 50'.8 S	160° 51'.3 E
	light beacon	9° 51'.2 S	160° 51'.3 E

724 SOLOMON ISLANDS - Ndende Island - Tomotu Neo - Light

Solomon Islands Maritime Safety Administration

SLB 107 (Santa Cruz Islands) [NC 11/8/2017]

Delete	light	10° 42'.1 S	165° 47'.1 E
--------	-------	-------------	--------------

SLB 107 (Graciosa Bay) [NC 11/8/2017]

Delete	light	10° 42'.1 S	165° 47'.1 E
--------	-------	-------------	--------------

725 SOLOMON ISLANDS - San Christobal Island to Malaita Island - Navais

Solomon Islands Maritime Safety Administration

Aus 4604 (INT 604) [253/2022]

Delete	light	8° 17'.0 S	160° 49'.0 E
--------	-------	------------	--------------

SLB 304 [943/2021]

Delete	light beacon	8° 17'.3 S	160° 48'.1 E
	light sector and legend, W, emanating from light beacon	8° 17'.3 S	160° 48'.1 E
	light	8° 24'.1 S	160° 35'.2 E

SLB 305 [923/2018]

Delete	light	10° 17'.9 S	161° 35'.1 E
--------	-------	-------------	--------------

726(T)/2022 AUSTRALIA - NEW SOUTH WALES - Clarence River - Nav aids restored

Former Notice - 201(T)/2022 is cancelled
Port Authority of New South Wales

Cancel this notice on receipt.

Chart formerly affected - Aus 222 - Aus 812 - Aus 813

727(T)/2022 AUSTRALIA - NEW SOUTH WALES - Tathra to Seal Rocks - Obstructions

Transport for NSW Notice SY2028

Shipping containers and debris may exist along the coast and in offshore waters between Tathra (36° 43'.55 S 149° 59'.46 E) and Seal Rocks (32° 27'.86 S 152° 33'.22 E).

Mariners are advised to navigate with caution in the area.

Chart temporarily affected - Aus 489 - Aus 806 - Aus 807 - Aus 808 - Aus 809 - Aus 810 - Aus 4601 (INT 601) - Aus 4602 (INT 602)

728(T)/2022 AUSTRALIA - NEW SOUTH WALES - Tathra to Seal Rocks - Obstructions

Former Notice - 485(T)/2020 is cancelled
Transport for NSW Notice SY2028

Cancel this notice on receipt.

Chart formerly affected - Aus 489 - Aus 806 - Aus 807 - Aus 808 - Aus 809 - Aus 810 - Aus 4601 (INT 601) - Aus 4602 (INT 602) - Aus 4643 (INT 643)

729(T)/2022 AUSTRALIA - QUEENSLAND - Airlie Beach - Muddy Bay - Wreck; light buoy

Maritime Safety Queensland Notice 414(T)/2022

A wreck marked by a special light buoy, *Fl. Y. 3s*, exists in position 20° 15'.80 S 148° 43'.60 E.

Chart temporarily affected - Aus 252 - Aus 253

730(T)/2022 AUSTRALIA - QUEENSLAND - Boyne River - Obstruction removed

Former Notice - 594(T)/2019 is cancelled
Maritime Safety Queensland

Cancel this notice on receipt.

Chart formerly affected - Aus 246

731(T)/2022 AUSTRALIA - QUEENSLAND - Brisbane River - Bulimba Point - Wreck salvaged

Former Notice - 334(T)/2019 is cancelled
Maritime Safety Queensland

Cancel this notice on receipt.

Chart formerly affected - Aus 238

732(T)/2022 AUSTRALIA - QUEENSLAND - Burnett River - Distillery Reach - Wreck salvaged

Former Notice - 250(T)/2018 is cancelled
Maritime Safety Queensland

Cancel this notice on receipt.

Chart formerly affected - Aus 242

733(T)/2022 AUSTRALIA - QUEENSLAND - Cairns - Trinity Inlet - Light buoys
Maritime Safety Queensland Notice 403(T)/2022

Special light buoys, *Fl. Y. 4s*, exist in the following positions:

16° 54'.81 S 145° 47'.20 E

16° 54'.89 S 145° 47'.18 E

16° 55'.17 S 145° 47'.13 E.

Chart temporarily affected - Aus 262

734(T)/2022 AUSTRALIA - QUEENSLAND - Cairns - Scientific instruments recovered
Former Notice - 610(T)/2022 is cancelled
Maritime Safety Queensland

Cancel this notice on receipt.

Chart formerly affected - Aus 262 - Aus 830

735(T)/2022 AUSTRALIA - QUEENSLAND - Cairns - Dredging operations completed
Former Notice - 611(T)/2022 is cancelled
Maritime Safety Queensland Notice 413(T)/2022

Cancel this notice on receipt.

Chart formerly affected - Aus 262

736(T)/2022 AUSTRALIA - QUEENSLAND - Moreton Bay - Scarborough - Mooring buoy
Maritime Safety Queensland Notice 419(T)/2022

An unlit blue mooring buoy exists in position 27° 11'.00 S 153° 05'.90 E.

Chart temporarily affected - Aus 236

737(T)/2022 AUSTRALIA - QUEENSLAND - Townsville - Dredging operations
Maritime Safety Queensland Notice 413(T)/2022

The dredge *Brisbane* is conducting dredging operations in the Sea Channel, Platypus Channel and the swing basins.

The dredge will display appropriate lights and shapes and monitor VHF Ch 12 and Ch 16.

Mariners are advised to navigate with caution in the area.

Chart temporarily affected - Aus 256 - Aus 827

738(T)/2022 PAPUA NEW GUINEA - Batumata Point - Survey operations southeastwards completed
Former Notice - 35(T)/2018 is cancelled
National Maritime Safety Authority PNG

Cancel this notice on receipt.

Chart formerly affected - Aus 507 - Aus 4620 (INT 620) - Aus 4621 (INT 621)

739(T)/2022 PAPUA NEW GUINEA - Cape St George - Light relit
Former Notice - 207(T)/2022 is cancelled
National Maritime Safety Authority PNG

Cancel this notice on receipt.

Chart formerly affected - Aus 4622 (INT 622) - PNG 397 - PNG 398 - PNG 554 - PNG 668

740(T)/2022 AUSTRALIA - NORTHERN TERRITORY - Clarence Strait - Survey operations completed

Former Notice - 537(T)/2022 is cancelled
Australian Hydrographic Office

Cancel this notice on receipt.

Chart formerly affected - Aus 20 - Aus 720 - Aus 721

741(T)/2022 AUSTRALIA - NORTHERN TERRITORY - Shoal Bay - Survey operations

Former Notice - 671(T)/2022 is cancelled
Northern Territory Government Notice 22(T)/2022

MV *Special Order* and support vessels are conducting survey operations between approximate positions 12° 16'.32 S 130° 29'.36 E and 12° 16'.15 S 131° 01'.52 E.

Mariners are advised to navigate with caution in the area.

Chart temporarily affected - Aus 25 - Aus 309 - Aus 316

742(T)/2022 AUSTRALIA - WESTERN AUSTRALIA - Bonaparte Archipelago - Survey operations
Guardian Geomatics

On or about 19 September 2022, MV *Offshore Solution* will be conducting survey operations in an area bounded by the following positions:

15° 00'.04 S 124° 41'.50 E
15° 07'.84 S 124° 25'.34 E
15° 00'.63 S 124° 10'.68 E
14° 43'.38 S 124° 37'.84 E
14° 48'.09 S 124° 47'.48 E
14° 54'.63 S 124° 38'.43 E.

Scientific instruments exist on the seabed in the following positions:

14° 44'.1 S 124° 39'.6 E
14° 47'.1 S 124° 45'.6 E
14° 48'.9 S 124° 29'.5 E
14° 52'.0 S 124° 42'.6 E
14° 54'.5 S 124° 20'.0 E
14° 56'.5 S 124° 30'.3 E
15° 00'.1 S 124° 40'.3 E
15° 00'.6 S 124° 10'.7 E
15° 04'.8 S 124° 20'.2 E
15° 05'.8 S 124° 33'.6 E
15° 09'.9 S 124° 25'.8 E.

Mariners are advised to navigate with caution in the area.

Note: For e-notice users, please see full edition for map.

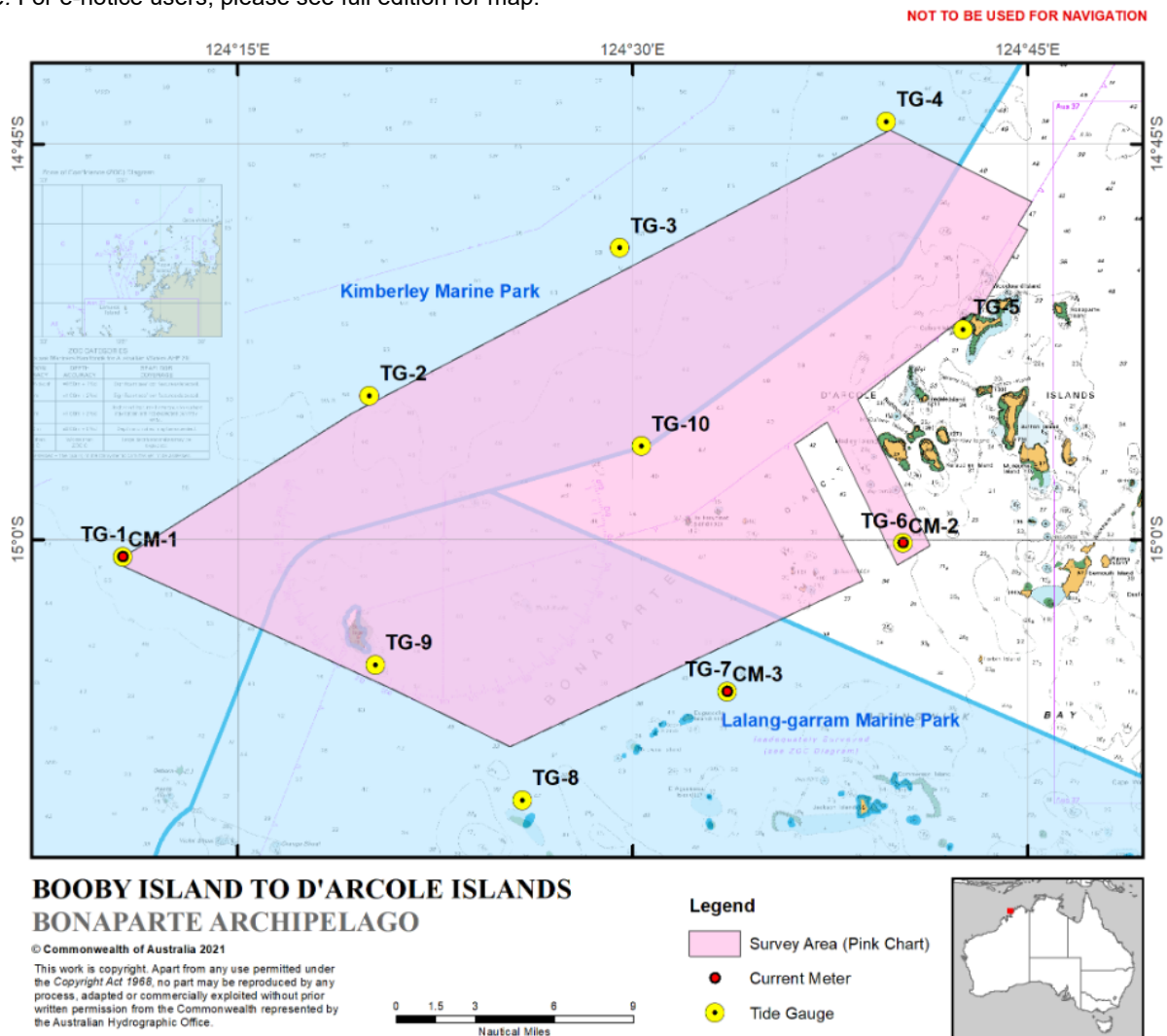


Chart temporarily affected - Aus 320 - Aus 729 - Aus 730

16 September 2022

743(T)/2022 AUSTRALIA - WESTERN AUSTRALIA - Dampier Archipelago - Roly Rock - Obstruction eastwards removed

Former Notice - 1273(T)/2019 is cancelled
Global Maritime

Cancel this notice on receipt.

Chart formerly affected - Aus 57 - Aus 327 - Aus 742

744(T)/2022 AUSTRALIA - WESTERN AUSTRALIA - Fremantle - Scientific instrument

Department of Transport WA Notice 2612(T)/2022

A subsurface scientific instrument, 0.2m above the seabed, exists in position 32° 04.72' S 115° 44.51' E.

Chart temporarily affected - Aus 117

745(T)/2022 AUSTRALIA - WESTERN AUSTRALIA - Ningaloo Reef - Scientific instrument

Department of Transport WA Notice 521/2022

A special light buoy, *Fl. Y. 2.5s*, exists in position 23° 08'.58 S 113° 44'.24 E.

Chart temporarily affected - Aus 746

746(T)/2022 AUSTRALIA - WESTERN AUSTRALIA - Onslow - Light buoys relit

Former Notice - 628(T)/2022 is cancelled
Department of Transport WA

Cancel this notice on receipt.

Chart formerly affected - Aus 64 - Aus 743

747(T)/2022 AUSTRALIA - VICTORIA - Ninety Mile Beach - Traffic separation scheme southwestwards
 Australian Maritime Safety Authority

Decommissioning of oil and gas infrastructure will take place at Blackback Prod Well (38° 32'.42 S 148° 33'.24 E), Gudgeon Well (38° 30'.82 S 148° 28'.17 E) and Terakihi Well (38° 30'.27 S 148° 32'.89 E).

New temporary shipping fairways and a separation zone have been established to keep transiting ships away from decommissioning activities. The new shipping fairways and separation zone are bound by the following positions:

Northeast bound lane	38° 36'.941 S	148° 45'.842 E
	38° 39'.507 S	148° 48'.047 E
	38° 44'.600 S	148° 23'.000 E
	38° 42'.034 S	148° 20'.795 E.
Southwest bound lane	38° 33'.407 S	148° 42'.545 E
	38° 35'.750 S	148° 44'.746 E
	38° 40'.844 S	148° 19'.699 E
	38° 38'.500 S	148° 17'.500 E.
Separation zone	38° 35'.750 S	148° 44'.746 E
	38° 36'.941 S	148° 45'.842 E
	38° 42'.034 S	148° 20'.795 E
	38° 40'.844 S	148° 19'.699 E.

The fairways and separation zone come into effect on 1 August 2022 at 0000 UTC and will remain in place until further notice.

Mariners should follow the appropriate traffic lane and navigate in the general direction of traffic flow for that lane. They should, as far as practicable, keep clear of the separation zone.

Due to an increased risk of collision, particularly with vessels that may be restricted in their ability to manoeuvre, mariners should keep a good look out and take early action to avoid collisions.

Note: For e-notice users, please see full edition for map.

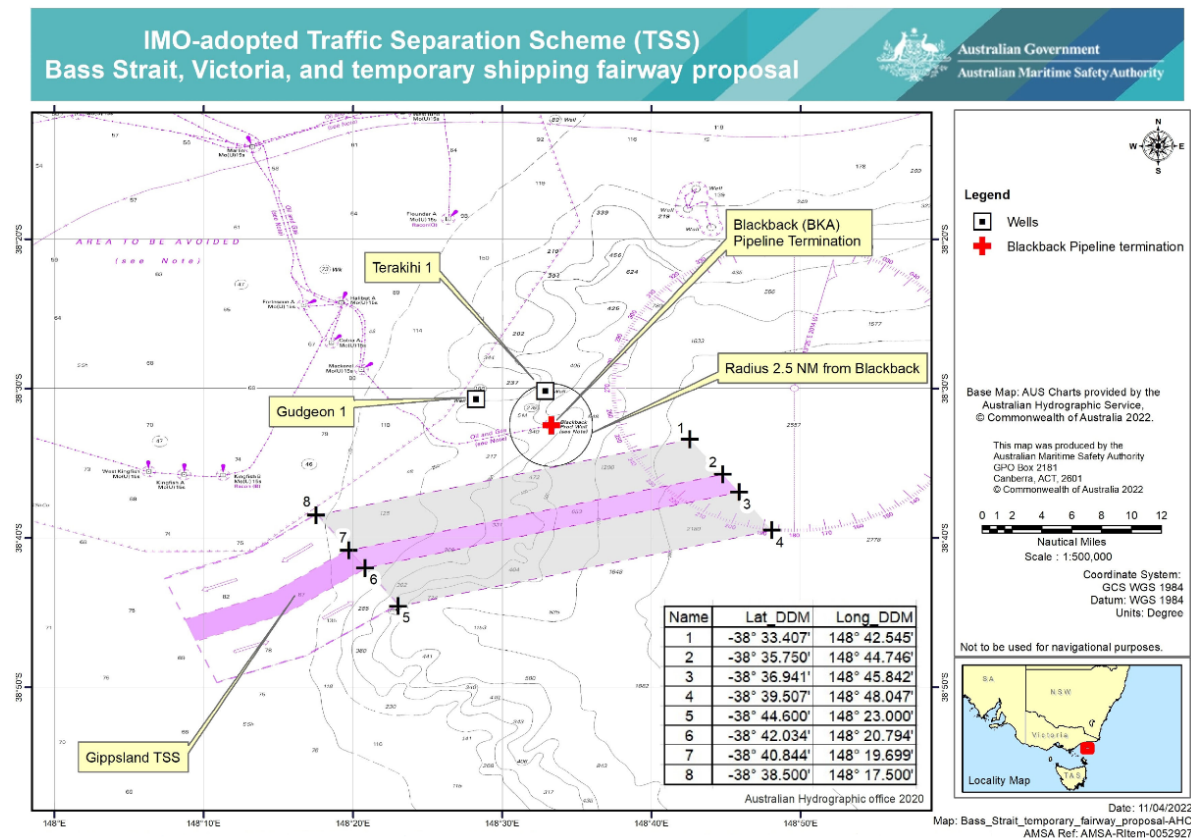


Chart temporarily affected - Aus 357 - Aus 487

748(T)/2022 AUSTRALIA - VICTORIA - Ninety Mile Beach - Traffic separation scheme southwestwards*Former Notice - 588(T)/2022 is cancelled*

Australian Maritime Safety Authority

Cancel this notice on receipt.

Chart formerly affected - Aus 357 - Aus 487 - Aus 4644 (INT 644)**749(T)/2022 AUSTRALIA - VICTORIA - Port Phillip - Police Point - Buoy off station**

Parks Victoria Notice 299(T)/2022

The special buoy (38° 18'.70 S 144° 42'.09 E) is off station.

Chart temporarily affected - Aus 144**750(T)/2022 AUSTRALIA - VICTORIA - Seaspray - Platform unlit southwards**

Australian Maritime Safety Authority Auscoast Warning 133/2021

The *Perch* platform, *Mo(U)15s* (38° 34'.13 S 147° 19'.35 E), is unlit.**Chart temporarily affected - Aus 357 - Aus 487 - Aus 4601 (INT 601)****751(T)/2022 AUSTRALIA - VICTORIA - Seaspray - Platform unlit southwards***Former Notice - 619(T)/2021 is cancelled*

Australian Maritime Safety Authority Auscoast Warning 133/2021

Cancel this notice on receipt.

Chart formerly affected - Aus 357 - Aus 487 - Aus 4601 (INT 601) - Aus 4644 (INT 644)**752(T)/2022 AUSTRALIA - VICTORIA - Seaspray - Platform unlit southeastwards**

Australian Maritime Safety Authority Auscoast Warning 37/2022

The *Dolphin* platform, *Mo(U)15s* (38° 29'.24 S 147° 22'.65 E), is unlit.**Chart temporarily affected - Aus 357 - Aus 487 - Aus 4601 (INT 601)****753(T)/2022 AUSTRALIA - VICTORIA - Seaspray - Platform unlit southeastwards***Former Notice - 297(T)/2022 is cancelled*

Australian Maritime Safety Authority Auscoast Warning 37/2022

Cancel this notice on receipt.

Chart formerly affected - Aus 357 - Aus 487 - Aus 4601 (INT 601) - Aus 4644 (INT 644)**754(T)/2022 AUSTRALIA - BASS STRAIT - Racon non operational**

Australian Maritime Safety Authority Auscoast Warning 171/2021

The racon at the *Flounder A* platform (38° 18'.65 S 148° 26'.36 E) is non operational.**Chart temporarily affected - Aus 357 - Aus 487****755(T)/2022 AUSTRALIA - BASS STRAIT - Racon non operational***Former Notice - 773(T)/2021 is cancelled*

Australian Maritime Safety Authority Auscoast Warning 171/2021

Cancel this notice on receipt.

Chart formerly affected - Aus 357 - Aus 487 - Aus 4644 (INT 644)

756(T)/2022 AUSTRALIA - TASMANIA - Frederick Henry Bay - Susan Bay - Wreck salvaged

Former Notice - 43(T)/2022 is cancelled
 Marine and Safety Tasmania Notice M307/2022

Cancel this notice on receipt.

Chart formerly affected - Aus 171

757(T)/2022 AUSTRALIA - TASMANIA - River Tamar - Riverside North - Light relit

Former Notice - 409(T)/2022 is cancelled
 Marine and Safety Tasmania

Cancel this notice on receipt.

Chart formerly affected - Aus 168

758(T)/2022 SOLOMON ISLANDS - Guadalcanal Island - Nughu Kiki - Light beacon relit

Former Notice - 512(T)/2019 is cancelled
 Solomon Islands Maritime Safety Administration

Cancel this notice on receipt.

Chart formerly affected - SLB 303 - SLB 304

759(T)/2022 SOLOMON ISLANDS - Maana'oba Island to Mbita'ama Harbour - Lights removed

Former Notice - 679(T)/2017 is cancelled
 Solomon Islands Maritime Safety Administration

Cancel this notice on receipt.

Chart formerly affected - Aus 4604 (INT 604) - Aus 4623 (INT 623) - Aus 4634 (INT 634) - SLB 304 - SLB 305

760(T)/2022 SOLOMON ISLANDS - Malakobi Island - Pizuanakelekele Reef - Light beacon restored

Former Notice - 514(T)/2019 is cancelled
 Solomon Islands Maritime Safety Administration

Cancel this notice on receipt.

Chart formerly affected - Aus 4623 (INT 623) - Aus 4634 (INT 634) - SLB 202 - SLB 302

761(T)/2022 SOLOMON ISLANDS - Ndende Island - Tomotu Neo - Light removed

Former Notice - 681(T)/2017 is cancelled
 Solomon Islands Maritime Safety Administration

Cancel this notice on receipt.

Chart formerly affected - Aus 4623 (INT 623) - SLB 107

762(T)/2022 SOLOMON ISLANDS - Port Noro - Light beacon restored

Former Notice - 201(T)/2019 is cancelled
 Solomon Islands Maritime Safety Administration

Cancel this notice on receipt.

Chart formerly affected - SLB 102

763(T)/2022 SOLOMON ISLANDS - San Christobal Island - Wangoraha Point - Light removed

Former Notice - 683(T)/2017 is cancelled

Solomon Islands Maritime Safety Administration

Cancel this notice on receipt.

Chart formerly affected - Aus 4623 (INT 623) - Aus 4634 (INT 634) - SLB 305

II

HYDROGRAPHIC REPORTS

NIL

There are no Blocks in Edition 19 of 2022

This page is intentionally blank.