



19 August 2022

Edition 17

AUSTRALIAN NOTICES TO MARINERS

Notices 641 - 675

Published fortnightly by the Australian Hydrographic Office



Australian Notices to Mariners are the authority for correcting charts and publications published by the Australian Hydrographic Office covering Australia, Papua New Guinea, Solomon Islands, Australian Antarctic Territory and Timor-Leste.

Commodore S.T. DUNNE RAN
Hydrographer of Australia

SECTIONS.

- I. **Australian Notices to Mariners, including blocks and notes.**
- II. **Hydrographic Reports.**

SUPPLEMENTS.

- I. **Tracings**
- II. **Cumulative List of Australian Notices to Mariners.**
- III. **Cumulative List of Temporary and Preliminary Australian Notices to Mariners.**
- IV. **Temporary and Preliminary Notices in force.**

© Commonwealth of Australia 2022

This work is copyright. Apart from any use permitted under the Copyright Act 1968, no part may be reproduced by any process, adapted, communicated or commercially exploited without prior written permission from The Commonwealth represented by the Australian Hydrographic Office.

IMPORTANT NOTICE

This edition of Notices to Mariners includes all significant information affecting AHO products which the AHO has become aware of since the last edition. All reasonable efforts have been made to ensure the accuracy and completeness of the information, including third party information, on which these updates are based. The AHO regards third parties from which it receives information as reliable, however the AHO cannot verify all such information and errors may therefore exist. The AHO does not accept liability for errors in third party information.

GENERAL INSTRUCTIONS

The substance of these notices should be inserted on the charts affected.

Bearings are referred to the true compass and are reckoned clockwise from North; those relating to lights are given as seen by an observer from seaward.

Positions quoted in notices relate to WGS84 which is the horizontal datum for all charts produced by the Australian Hydrographic Office.

The range quoted for a light is its nominal range.

Depths are with reference to the chart datum of each chart. Heights are above mean high water springs or mean higher high water, as appropriate.

The capital letter (P) or (T) after the number of any notice denotes a preliminary or temporary notice respectively, which are contained separately at the end of the permanent notices.

REPORTING OF DANGERS

Mariners are particularly requested to notify the AUSTRALIAN HYDROGRAPHIC OFFICE, Locked Bag 8801 Wollongong, NSW 2500 (Fax 02-4223 6599, e-mail datacentre@hydro.gov.au or, alternatively by filling in and submitting the [Hydrographic Notes](#) forms located on the web site – www.hydro.gov.au), immediately on the discovery of new dangers or suspected dangers to navigation. For changes or defects in aids to navigation notify AusSAR (Fax 02-6230 6868 or email rccaus@amsa.gov.au).

AUTHORISED USE

Copies of Australian notices are available free of charge from the Australian Hydrographic Office (AHO) website (www.hydro.gov.au) and through the eNotices (email) service (www.hydro.gov.au/enotices/enotices.htm).

Individual Notices may be copied for the purpose of inserting Notice substance on official charts and publications. Paper copies may be printed by chart agents and distributed to customers on a cost recovery basis. Participating chart agents are listed on the AHO website as providing a 'Paper Notices to Mariners' service (www.hydro.gov.au/webapps/jsp/agents/agents-list.jsp). Copies of the notices may not be sold for profit without prior written agreement.

NUMERICAL INDEX OF NOTICES TO MARINERS

Edition No 17

Notices	Aus Chart, INT Chart, ENC Cell, AHP, BA Pubs
641	Aus 4602, 4635, INT 602, 635
642	Aus 743, 744
643	Aus 195
644	Aus 235, 236
645	Aus 246
646	Aus 6
647	Aus 813, 814
648	Aus 235
649	Aus 235, 236, 814, 815
650	Aus 14
651	Aus 72
652	Aus 331
653	Aus 130, 781
654	Aus 141
655	Aus 173, 795
656	Aus 173
657	Aus 171
658	Aus 171, 173
659	Aus 168
660	SLB 201
661(P)	Aus 808, 4620, 4621, 4623, 4634, 4643, INT 620, 621, 623, 634, 643
662(T)	Aus 200, 489, 808, 4620, 4621, 4623, 4634, 4635, 4643, INT 620, 621, 623, 634, 635, 643, PNG 379, 505, 506, 621
663(P)	Aus 235, 809, 4601, 4604, 4622, 4623, 4634, 4643, INT 601, 604, 622, 623, 634, 643
664(T)	Aus 235, 489, 809, 815, 4601, 4602, 4604, 4622, 4623, 4634, 4635, 4643, INT 601, 602, 604, 622, 623, 634, 635, 643, SLB 305
665(T)	Aus 250
666(T)	Aus 249, 250, 823, 824
667(T)	Aus 235, 815
668(T)	Aus 236
669(T)	Aus 236
670(P)	PNG 519
671(T)	Aus 25, 309, 316
672(T)	Aus 306, 715, 4720, 4721, INT 720, 721
673(T)	Aus 57, 327, 742
674(P)	Aus 346, 485
675(T)	Aus 780

NUMERICAL INDEX OF CHARTS AFFECTED

Edition No 17

Aus Chart	Notices
Aus 6	646
Aus 14	650
Aus 25	671(T)
Aus 57	673(T)
Aus 72	651
Aus 130	653
Aus 141	654
Aus 168	659
Aus 171	657, 658
Aus 173	655, 656, 658
Aus 195	643
Aus 200	662(T)
Aus 235	644, 648, 649, 663(P), 664(T), 667(T)
Aus 236	644, 649, 668(T), 669(T)
Aus 246	645
Aus 249	666(T)
Aus 250	665(T), 666(T)
Aus 306	672(T)
Aus 309	671(T)
Aus 316	671(T)
Aus 327	673(T)
Aus 331	652
Aus 346	674(P)
Aus 485	674(P)
Aus 489	662(T), 664(T)
Aus 715	672(T)
Aus 742	673(T)
Aus 743	642
Aus 744	642
Aus 780	675(T)
Aus 781	653
Aus 795	655
Aus 808	661(P), 662(T)
Aus 809	663(P), 664(T)
Aus 813	647
Aus 814	647, 649
Aus 815	649, 664(T), 667(T)
Aus 823	666(T)
Aus 824	666(T)
Aus 4601	663(P), 664(T)
Aus 4602	641, 664(T)
Aus 4604	663(P), 664(T)
Aus 4620	661(P), 662(T)
Aus 4621	661(P), 662(T)
Aus 4622	663(P), 664(T)
Aus 4623	661(P), 662(T), 663(P), 664(T)
Aus 4634	661(P), 662(T), 663(P), 664(T)
Aus 4635	641, 662(T), 664(T)
Aus 4643	661(P), 662(T), 663(P), 664(T)
Aus 4720	672(T)
Aus 4721	672(T)
PNG 379	662(T)
PNG 505	662(T)
PNG 506	662(T)

Aus Chart	Notices
PNG 519	670(P)
PNG 621	662(T)
SLB 201	660
SLB 305	664(T)

INT Chart	Notices
INT 601	663(P), 664(T)
INT 602	641, 664(T)
INT 604	663(P), 664(T)
INT 620	661(P), 662(T)
INT 621	661(P), 662(T)
INT 622	663(P), 664(T)
INT 623	661(P), 662(T), 663(P), 664(T)
INT 634	661(P), 662(T), 663(P), 664(T)
INT 635	641, 662(T), 664(T)
INT 643	661(P), 662(T), 663(P), 664(T)
INT 720	672(T)
INT 721	672(T)

641 AUSTRALIA - Products - New Charts, New Editions, Withdrawn Charts

Australian Hydrographic Office

New Charts

<i>Chart</i>	<i>Title and Geographical limits</i>	<i>Scale</i>	<i>Publication Date</i>	<i>Remarks</i>
NIL				

New Electronic Navigation Chart (Aus ENC)

<i>Cell Name</i>	<i>Title</i>	<i>Publication Date</i>	<i>Remarks</i>
AU6BNE02	Australia - Queensland - Brisbane North West Channel North	11 August 2022	
AU6BNE03	Australia - Queensland - Brisbane North West Channel Middle	11 August 2022	
AU6BNE04	Australia - Queensland - Brisbane North West Channel South	18 August 2022	

New Editions and Withdrawn Charts

<i>Chart</i>	<i>Title</i>	<i>Scale</i>	<i>Publication Date</i>	<i>Remarks</i>
Aus 4602 (INT 602) (Edition 8)	South Pacific Ocean - Tasman and Coral Seas - Australia to Northern New Zealand and Fiji	1:3 500 000	19 August 2022	New edition with general updating throughout; including latest bathymetric data. Chart Aus 4602 Edition 7 dated 3 September 2004 is now superseded and must be withdrawn from use.

Charts withdrawn without replacement

<i>Chart</i>	<i>Title</i>	<i>Scale</i>	<i>Remarks</i>
Aus 4635 (INT 635) Edition 2	Australia - East Coast - Cape Byron to Mackay	1:1 500 000	22 September 2017

Chart permanently withdrawn

Charts listed above as withdrawn no longer meet chart carriage requirements and should be marked as "superseded" and replaced with the new chart/ new edition listed prior to passage through the area covered by the new chart.

When placing orders with a chart agent between notice of forthcoming edition and its publication, mariners should advise whether their order pertains to the current edition or the new edition.

For further details refer to the AHO website at www.hydro.gov.au for new edition and new chart stock arrival information.

642 AUSTRALIA - Products - New Charts and New Editions to be published shortly

Australian Hydrographic Office

New Charts to be published shortly

Chart	Title	Scale	Remarks
Aus 907	Approaches to Tobar	1:10 000	New chart with latest bathymetric survey data.
Aus 908	Porto Baia de Tobar	1:3 750	New chart with latest bathymetric survey data.

New Editions to be published shortly

Chart	Title	Scale	Remarks
Aus 743	Australia - North West Coast - Western Australia - Barrow Island to Onslow	1:150 000	New edition with general updating throughout; including latest bathymetric data.
Aus 744	Australia - North West Coast - Western Australia - Exmouth Gulf and Approaches	1:150 000	New edition with general updating throughout; including latest bathymetric data.

643 AUSTRALIA - NEW SOUTH WALES - Port Kembla - Depth

Port Authority of New South Wales

Aus 195 [595/2022]

Insert	depth, 19 ₉ m, and extend contour NW to enclose	34° 27'.653 S	150° 54'.877 E
--------	--	---------------	----------------

644 AUSTRALIA - QUEENSLAND - Flinders Reef - AIS*Former Notice - 23(T)/2022 is cancelled*

Maritime Safety Queensland Notice 358/2022

Aus 235 [599/2022]

Insert	magenta circle with legend, A/S, centred on	26° 58'.21 S	153° 29'.46 E
--------	---	--------------	---------------

Aus 236 [600/2022]

Insert	magenta circle with legend, A/S, centred on	26° 58'.21 S	153° 29'.46 E
--------	---	--------------	---------------

645 AUSTRALIA - QUEENSLAND - Gladstone - Boyne River - Entrance Ledge - Depths

Maritime Safety Queensland

Aus 246 [1014/2021]

Insert	accompanying block	23° 55'.7 S	151° 21'.1 E
--------	--------------------	-------------	--------------

646 AUSTRALIA - QUEENSLAND - Karumba - Light sector; bearing

Maritime Safety Queensland Notice 326/2022

Aus 6 [627/2021]

Amend	legend to 119°	17° 25'.38 S	140° 42'.85 E
-------	----------------	--------------	---------------

Delete	light sector and legend, Fl(2)8s, emanating from light beacon	17° 27'.17 S	140° 46'.18 E
--------	---	--------------	---------------

647 AUSTRALIA - QUEENSLAND - Kirra Point - Scientific instrument*Former Notice - 442(T)/2021 is cancelled*

Maritime Safety Queensland Notice 353/2022

Aus 813 [414/2022]

Insert	out of position special spherical light buoy, Fl(5)Y.20s, without topmark	28° 08'.58 S	153° 30'.72 E
--------	---	--------------	---------------

Aus 814 [599/2022]

Insert	out of position special spherical light buoy, Fl(5)Y.20s, without topmark	28° 08'.58 S	153° 30'.72 E
--------	---	--------------	---------------

648 AUSTRALIA - QUEENSLAND - Mooloolaba - Depths

Maritime Safety Queensland

Aus 235 [644/2022]

Insert	accompanying ZOC diagram	26° 48'.5 S	152° 56'.5 E
--------	--------------------------	-------------	--------------

Aus 235 (Mooloolaba Harbour) [644/2022]

Insert	accompanying block	26° 41'.0 S	153° 07'.7 E
--------	--------------------	-------------	--------------

649 AUSTRALIA - QUEENSLAND - Moreton Bay - North East Channel - Light buoys

Former Notice - 17(T)/2021 is cancelled

Maritime Safety Queensland Notice 359/2022

Aus 235 [648/2022]

Move	light buoy	26° 57'.6 S	153° 20'.3 E
	to	26° 56'.95 S	153° 20'.08 E
	light buoy	26° 59'.9 S	153° 20'.0 E
	to	27° 00'.02 S	153° 19'.78 E
	light buoy	27° 02'.4 S	153° 20'.7 E
	to	27° 02'.67 S	153° 20'.77 E

Delete	depth, 3 ₄ m	26° 57'.0 S	153° 20'.1 E
--------	-------------------------	-------------	--------------

Aus 236 [644/2022]

Move	light buoy	26° 59'.9 S	153° 20'.0 E
	to	27° 00'.02 S	153° 19'.78 E
	light buoy	27° 02'.4 S	153° 20'.7 E
	to	27° 02'.67 S	153° 20'.77 E

Delete	light buoy	26° 57'.6 S	153° 20'.3 E
--------	------------	-------------	--------------

Aus 814 [647/2022]

Insert	out of position port lateral pillar light buoy, <i>Fl.R.2-5s NE2</i> , with topmark	26° 56'.95 S	153° 20'.08 E
--------	---	--------------	---------------

Delete	light buoy	26° 57'.6 S	153° 20'.3 E
--------	------------	-------------	--------------

Aus 815 [599/2022]

Insert	out of position port lateral pillar light buoy, <i>Fl.R.2-5s NE2</i> , with topmark	26° 56'.95 S	153° 20'.08 E
--------	---	--------------	---------------

Delete	light buoy	26° 57'.6 S	153° 20'.3 E
--------	------------	-------------	--------------

650 AUSTRALIA - NORTHERN TERRITORY - Groote Eylandt - North-West Bay - Marine farm

Northern Territory Government Notice 20/2022

Aus 14 [312/2022]

Insert	marine farm symbol with legend (<i>see Note</i>), centred on	13° 43'.88 S	136° 35'.11 E
--------	--	--------------	---------------

651 AUSTRALIA - WESTERN AUSTRALIA - Mauds Landing - Light buoy

Department of Transport WA

Aus 72 (Mauds Landing) [373/2020]

Insert	north cardinal pillar light buoy, Q, with topmark	23° 06'.711 S	113° 46'.405 E
--------	---	---------------	----------------

652 AUSTRALIA - WESTERN AUSTRALIA - Peron Peninsula - Denham - Light

Department of Transport WA Notice WA661/6/2022

Aus 331 (Denham) [106/2022]

Insert	light, <i>F.Bu 4M</i>	25° 55'.67 S	113° 31'.97 E
--------	-----------------------	--------------	---------------

653 AUSTRALIA - SOUTH AUSTRALIA - Gulf St Vincent - Port Adelaide - Depth

HydroSurvey Australia

Aus 130 [NE 13/5/2022]Replace depth, 14₈m, with depth 14₅m

34° 46'.75 S 138° 21'.82 E

Aus 781 [NE 10/6/2022]

Insert contour, between

34° 46'.50 S 138° 21'.70 E

34° 46'.77 S 138° 21'.82 E

34° 46'.63 S 138° 22'.26 E

Delete contour, between

34° 46'.5 S 138° 21'.7 E

34° 46'.6 S 138° 22'.3 E

654 AUSTRALIA - VICTORIA - Apollo Bay - Depths

Total Hydrographic

Aus 141 (Apollo Bay) [1038/2020]

Insert accompanying block A

38° 45'.4 S 143° 40'.5 E

Aus 141 (Apollo Bay Boat Harbour) [1038/2020]

Insert accompanying block B

38° 45'.4 S 143° 40'.8 E

655 AUSTRALIA - TASMANIA - D'Entrecasteaux Channel - Little Peppermint Bay - Wrecks

Marine and Safety Tasmania Notice M259/2022

Aus 173 [483/2022]Insert depth, 1₄m, enclosed by danger circle with legend, *Wk Rep (2022)*

43° 08'.90 S 147° 14'.78 E

Delete depth, 8₃m

43° 08'.9 S 147° 14'.9 E

stranded wreck and legend, Historic Wk (see Note)

43° 09'.0 S 147° 14'.8 E

Aus 795 [385/2022]

Delete stranded wreck and legend, Historic Wk (see Note)

43° 09'.0 S 147° 14'.8 E

656 AUSTRALIA - TASMANIA - D'Entrecasteaux Channel - Port Esperance - Pipeline

Marine and Safety Tasmania Notice M277/2022

Aus 173 [655/2022]Insert outfall pipeline with legend, *Water*, between

43° 20'.53 S 147° 01'.68 E

43° 20'.51 S 147° 01'.72 E

43° 20'.53 S 147° 01'.88 E

43° 20'.56 S 147° 01'.97 E

43° 20'.55 S 147° 02'.11 E

43° 20'.47 S 147° 02'.39 E

43° 20'.39 S 147° 02'.97 E

43° 20'.33 S 147° 03'.18 E

657 AUSTRALIA - TASMANIA - Hobart - New Town Bay - Coastline, infrastructure

A Boon

Aus 171 [484/2022]

Insert accompanying block A

42° 50'.7 S 147° 19'.5 E

Aus 171 [484/2022]

Insert accompanying block B (for plan Bowen Bridge)

42° 50'.2 S 147° 19'.7 E

658 AUSTRALIA - TASMANIA - North West Bay - Infrastructure

Australian Hydrographic Office , A Boon

Aus 171 [657/2022]

Insert accompanying block C

43° 03'.44 S 147° 16'.08 E

Aus 173 [656/2022]

Insert accompanying block

43° 03'.44 S 147° 16'.08 E

659 AUSTRALIA - TASMANIA - River Tamar - Moriarty Reach - Topmark*Former Notice - 136(T)/2022 is cancelled*

Marine and Safety Tasmania Notice M288/2022

Aus 168 [753/2020]

Insert starboard lateral topmark

41° 12'.479 S 146° 54'.434 E

660 SOLOMON ISLANDS - Honiara - Fish aggregating device

Solomon Islands Maritime Authority Notice 8/2022

SLB 201 [943/2021]Insert special spherical buoy, *FAD*, without topmark

9° 24'.94 S 159° 54'.82 E

Delete depth, 82m

9° 25'.0 S 159° 55'.0 E

661(P)/2022 AUSTRALIA - NEW SOUTH WALES - PAPUA NEW GUINEA - SOLOMON ISLANDS - Submarine cable
33 Below Pty Ltd

A submarine cable exists between the following positions:

9° 30'.11 S 147° 10'.21 E
10° 44'.26 S 147° 41'.80 E
15° 00'.71 S 153° 28'.18 E
22° 03'.78 S 155° 56'.03 E
27° 11'.16 S 155° 58'.74 E
27° 13'.80 S 155° 59'.08 E
29° 00'.17 S 156° 46'.65 E
31° 27'.48 S 156° 41'.51 E
32° 14'.08 S 155° 21'.76 E
34° 04'.85 S 154° 18'.99 E
34° 29'.36 S 153° 13'.74 E
34° 31'.95 S 152° 18'.46 E
34° 23'.78 S 151° 49'.19 E
33° 54'.33 S 151° 16'.55 E;
and
9° 52'.00 S 159° 03'.00 E
10° 07'.33 S 158° 37'.49 E
11° 00'.19 S 158° 15'.24 E
15° 02'.89 S 153° 29'.50 E.

Charts will be updated in due course.

Mariners are advised to navigate with caution in the area.

Chart which will be affected - Aus 808 - Aus 4620 (INT 620) - Aus 4621 (INT 621) - Aus 4623 (INT 623) - Aus 4634 (INT 634) - Aus 4643 (INT 643)

662(T)/2022 AUSTRALIA - NEW SOUTH WALES - PAPUA NEW GUINEA - SOLOMON ISLANDS - Submarine cable
Former Notice - 607(P)/2020 is cancelled
33 Below Pty Ltd

Cancel this notice on receipt.

Chart formerly affected - Aus 200 - Aus 489 - Aus 808 - Aus 4620 (INT 620) - Aus 4621 (INT 621) - Aus 4623 (INT 623) - Aus 4634 (INT 634) - Aus 4635 (INT 635) - Aus 4643 (INT 643) - PNG 379 - PNG 505 - PNG 506 - PNG 621

663(P)/2022 AUSTRALIA - NEW SOUTH WALES - Sydney - Maroochydore - SOLOMON ISLANDS - Submarine cable
33 Below Pty Ltd

A submarine cable exists between the following positions:

2° 12'.0 S 156° 20'.0 E
11° 21'.9 S 163° 38'.8 E
19° 13'.8 S 159° 28'.9 E
25° 20'.8 S 160° 15'.7 E
26° 55'.1 S 157° 57'.9 E
32° 00'.9 S 154° 50'.8 E
32° 47'.6 S 154° 44'.5 E
34° 05'.2 S 153° 01'.0 E
33° 46'.6 S 152° 07'.2 E
33° 43'.3 S 151° 18'.0 E
and
26° 55'.0 S 157° 57'.9 E
26° 15'.6 S 156° 39'.3 E
26° 09'.3 S 153° 50'.2 E
26° 39'.5 S 153° 06'.7 E.

Charts will be updated in due course.

Mariners are advised to navigate with caution in the area.

Chart which will be affected - Aus 235 - Aus 809 - Aus 4601 (INT 601) - Aus 4604 (INT 604) - Aus 4622 (INT 622) - Aus 4623 (INT 623) - Aus 4634 (INT 634) - Aus 4643 (INT 643)

664(T)/2022 AUSTRALIA - NEW SOUTH WALES - Sydney - Maroochydore - SOLOMON ISLANDS - Submarine cable
Former Notice - 609(P)/2020 is cancelled
 33 Below Pty Ltd

Cancel this notice on receipt.

Chart formerly affected - Aus 235 - Aus 489 - Aus 809 - Aus 815 - Aus 4601 (INT 601) - Aus 4602 (INT 602) - Aus 4604 (INT 604) - Aus 4622 (INT 622) - Aus 4623 (INT 623) - Aus 4634 (INT 634) - Aus 4635 (INT 635) - Aus 4643 (INT 643) - SLB 305

665(T)/2022 AUSTRALIA - QUEENSLAND - Hay Point - Mooring anchors removed
Former Notice - 614(T)/2022 is cancelled
 Maritime Safety Queensland

Cancel this notice on receipt.

Chart formerly affected - Aus 250

666(T)/2022 AUSTRALIA - QUEENSLAND - Mackay - Slade Rock - Light buoy restored
Former Notice - 569(T)/2022 is cancelled
 Maritime Safety Queensland

Cancel this notice on receipt.

Chart formerly affected - Aus 249 - Aus 250 - Aus 823 - Aus 824

667(T)/2022 AUSTRALIA - QUEENSLAND - Maroochydore - Wreck northeastwards
Former Notice - 122(T)/2022 is cancelled
 Maritime Safety Queensland

Cancel this notice on receipt.

Chart formerly affected - Aus 235 - Aus 815

668(T)/2022 AUSTRALIA - QUEENSLAND - Moreton Bay - Wellington Point - Dredging operations
 Maritime Safety Queensland Notice 347(T)/2022

The dredge *Faucon* and the barge *GHT1* are conducting dredging operations in the vicinity of positions 27° 27'.79 S 153° 14'.99 E and 27° 27'.99 S 153° 14'.49 E.

The vessels will display appropriate lights and shapes and will monitor VHF Ch 13 and Ch 16.

Mariners are advised to navigate with caution in the area.

Chart temporarily affected - Aus 236

669(T)/2022 AUSTRALIA - QUEENSLAND - Moreton Bay - Macleay Island - Karragarra Island - Lamb Island - Harbour works
Former Notice - 357(T)/2022 is cancelled
 Maritime Safety Queensland Notice 180(T)/2022, 354(T)/2022, 355(T)/2022

Harbour works associated with the upgrade of the ferry terminals are in progress at Macleay Island (27° 37'.90 S 153° 21'.92 E), Karragarra Island (27° 38'.10 S 153° 21'.82 E) and Lamb Island (27° 37'.87 S 153° 22'.35 E).

Barges and support vessels are on site.

Anchors and mooring buoys exist in the area and will be marked by lights, *Fl. Y. 4s*.

Mariners are advised to navigate with caution in the area with minimal wash.

Chart temporarily affected - Aus 236

670(P)/2022 PAPUA NEW GUINEA - Star Reefs Passage - Shoaling
Fugro LADS

Latest survey indicates shoaler depths than those charted may exist in an area bounded by the following positions:

8° 16'.32 S 149° 35'.81 E
8° 17'.57 S 149° 34'.96 E
8° 26'.58 S 149° 42'.16 E
8° 34'.69 S 149° 54'.56 E
8° 33'.37 S 149° 55'.41 E
8° 27'.31 S 149° 50'.78 E.

Mariners are advised to navigate with caution in the area.

Charts will be updated in due course.

Chart which will be affected - PNG 519

671(T)/2022 AUSTRALIA - NORTHERN TERRITORY - Shoal Bay - Survey operations
Northern Territory Government Notice 22(T)/2022

MV *Offshore Solution*, MV *Special Order* and support vessels are conducting survey operations between approximate positions 12° 16'.32 S 130° 29'.36 E and 12° 16'.15 S 131° 01'.52 E.

Mariners are advised to navigate with caution in the area.

Chart temporarily affected - Aus 25 - Aus 309 - Aus 316

672(T)/2022 AUSTRALIA - NORTHERN TERRITORY - Veronica Island - Light relit
Former Notice - 619(T)/2022 is cancelled
Australian Maritime Safety Authority

Cancel this notice on receipt.

Chart formerly affected - Aus 306 - Aus 715 - Aus 4720 (INT 720) - Aus 4721 (INT 721)

673(T)/2022 AUSTRALIA - WESTERN AUSTRALIA - Dampier Archipelago - Kendrew Island - Scientific instrument recovered
Former Notice - 1055(T)/2020 is cancelled
Department of Transport WA

Cancel this notice on receipt.

Chart formerly affected - Aus 57 - Aus 327 - Aus 742

674(P)/2022 AUSTRALIA - SOUTH AUSTRALIA - Kangaroo Island - Cape Gantheaume - Shoaling
Department for Environment and Water SA

Latest survey indicates shoaler depths than those charted may exist in an area bounded by the following positions:

36° 04'.60 S 137° 14'.33 E
36° 10'.46 S 137° 18'.29 E
36° 10'.48 S 137° 28'.99 E
36° 06'.90 S 137° 33'.76 E
36° 05'.49 S 137° 32'.95 E
36° 03'.40 S 137° 15'.00 E.

Mariners are advised to navigate with caution in the area.

Charts will be updated in due course.

Chart which will be affected - Aus 346 - Aus 485

675(T)/2022 AUSTRALIA - SOUTH AUSTRALIA - Kangaroo Island - Nepean Bay - Light beacon unlit
Department for Infrastructure and Transport SA Notice 22(T)/2022

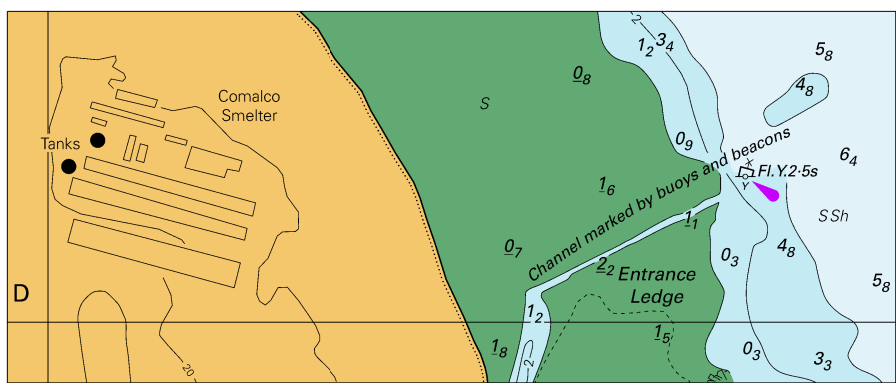
The south cardinal light beacon, *Q(6)+LFl. 15s 3M* (35° 40'.02 S 137° 41'.25 E), is unlit.

Chart temporarily affected - Aus 780

HYDROGRAPHIC REPORTS

<i>Locality</i>	<i>Report</i>	<i>Ship/Authority</i>	<i>Observer</i>
TAS- North West Bay New Town Bay	Infrastructure		A Boon

To accompany Australian Notice to Mariners 645/2022

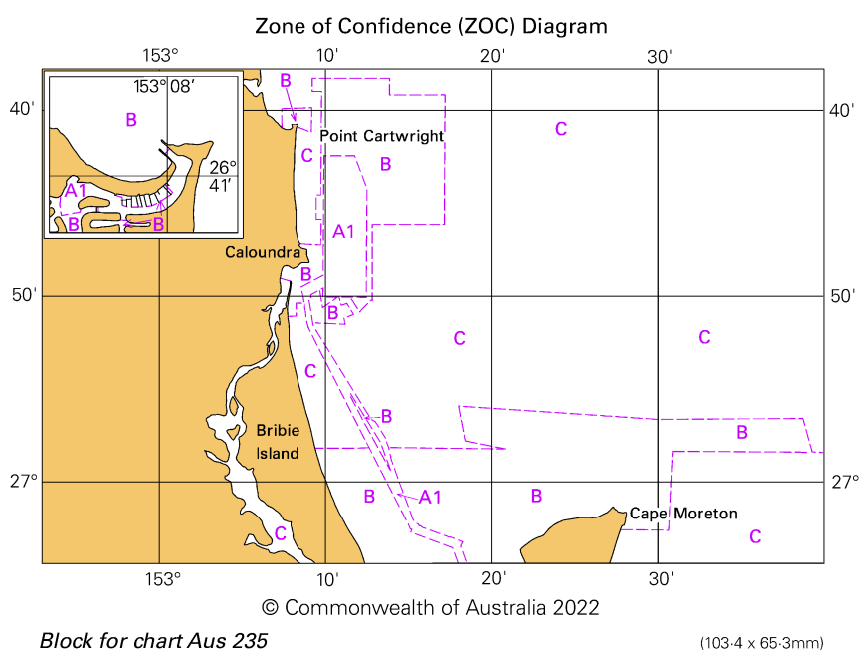


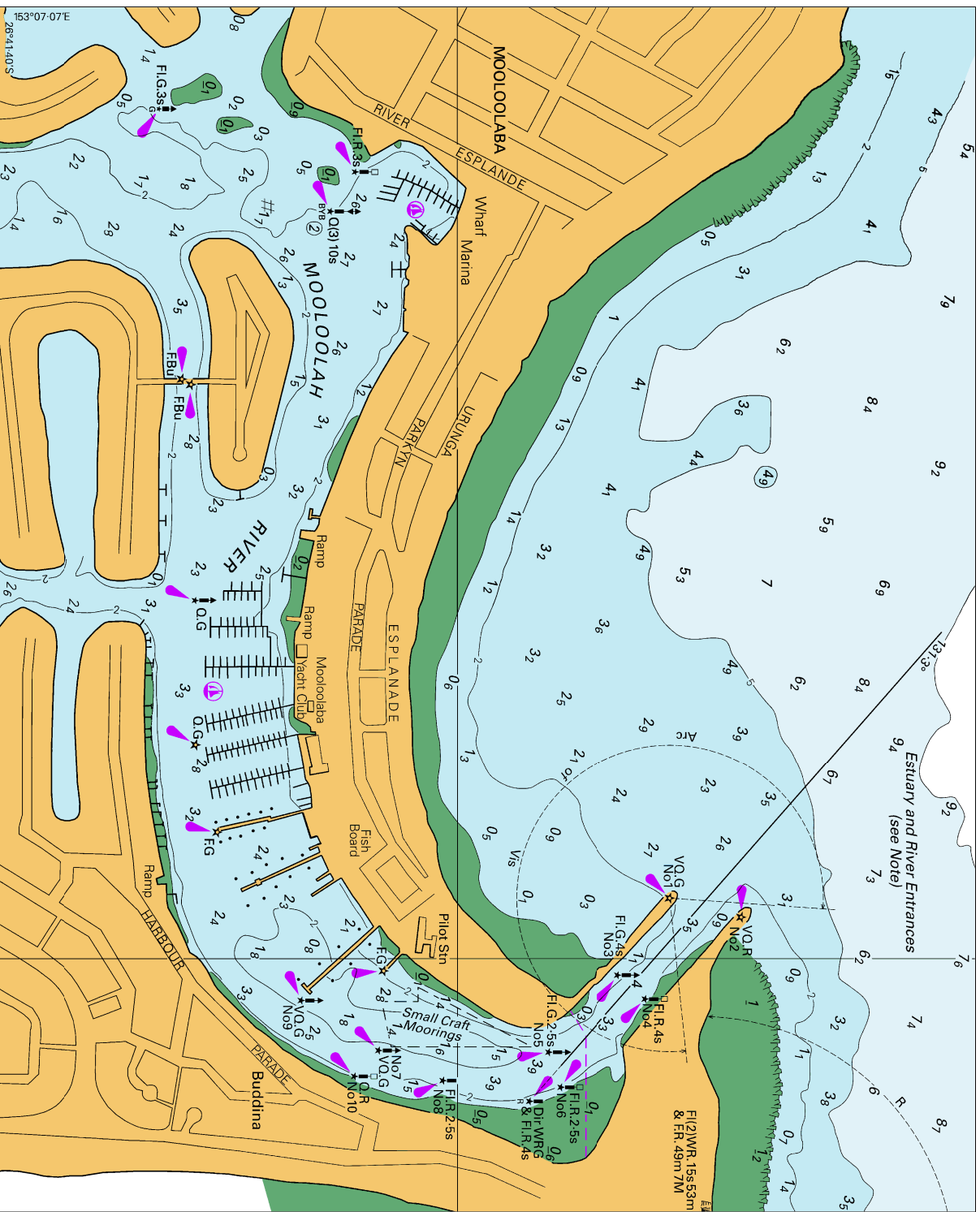
Block for chart Aus 246

© Commonwealth of Australia 2022

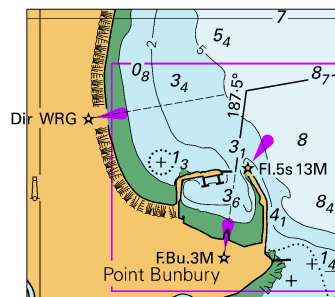
(117.4 x 49.0mm)

To accompany Australian Notice to Mariners 648/2022





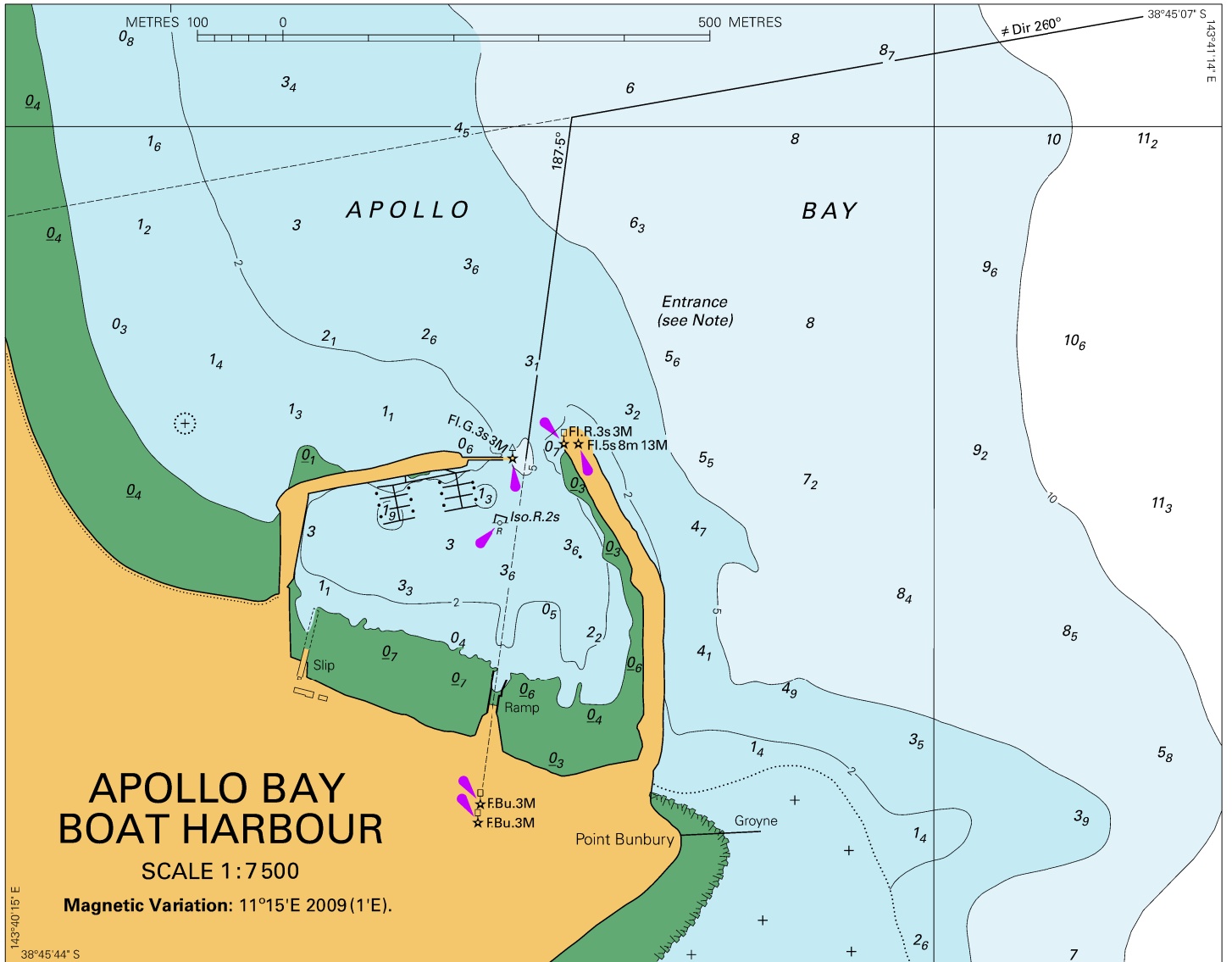
To accompany Australian Notice to Mariners 654/2022



Block A for chart Aus 141 (41.3 x 38.1mm)

© Commonwealth of Australia 2022

To accompany Australian Notice to Mariners 654/2022



Block B for chart Aus 141

© Commonwealth of Australia 2022

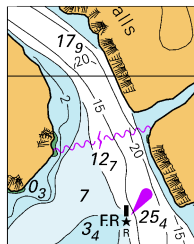
(189.9 x 149.9mm)

To accompany Australian Notice to Mariners 657/2022



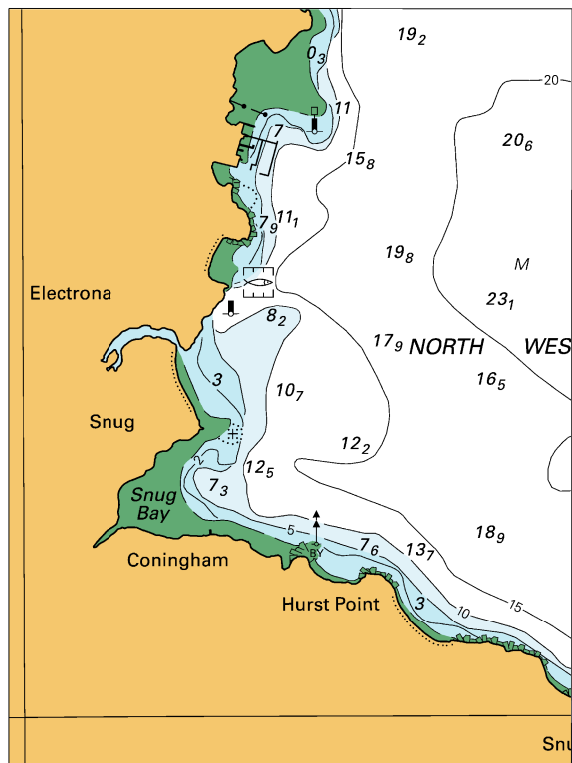
© Commonwealth of Australia 2022
Block A for chart Aus 171 (48.4 x 33.3mm)

To accompany Australian Notice to Mariners 657/2022



© Commonwealth of Australia 2022
Block B for chart Aus 171 (25.2 x 31.4mm)

To accompany Australian Notice to Mariners 658/2022

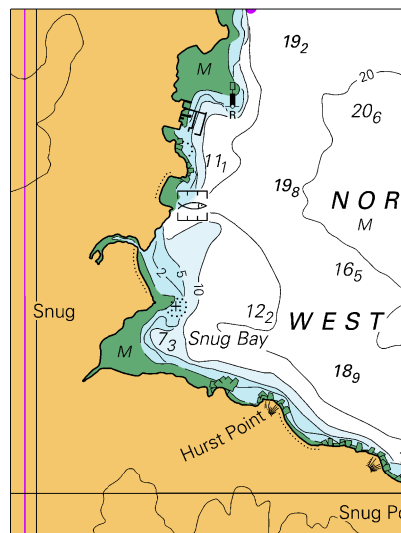


Block C for chart Aus 171

(74.2 x 100.2mm)

© Commonwealth of Australia 2022

To accompany Australian Notice to Mariners 658/2022



Block for chart 173

(52.4 x 69.8mm)

© Commonwealth of Australia 2022