



24 June 2022

Edition 13

AUSTRALIAN NOTICES TO MARINERS

Notices 467 - 512

Published fortnightly by the Australian Hydrographic Office



Australian Notices to Mariners are the authority for correcting charts and publications published by the Australian Hydrographic Office covering Australia, Papua New Guinea, Solomon Islands, Australian Antarctic Territory and Timor-Leste.

Commodore S.T. DUNNE RAN
Hydrographer of Australia

SECTIONS.

- I. **Australian Notices to Mariners, including blocks and notes.**
- II. **Hydrographic Reports.**

SUPPLEMENTS.

- I. **Tracings**
- II. **Cumulative List of Australian Notices to Mariners.**
- III. **Cumulative List of Temporary and Preliminary Australian Notices to Mariners.**
- IV. **Temporary and Preliminary Notices in force.**

© Commonwealth of Australia 2022

This work is copyright. Apart from any use permitted under the Copyright Act 1968, no part may be reproduced by any process, adapted, communicated or commercially exploited without prior written permission from The Commonwealth represented by the Australian Hydrographic Office.

IMPORTANT NOTICE

This edition of Notices to Mariners includes all significant information affecting AHO products which the AHO has become aware of since the last edition. All reasonable efforts have been made to ensure the accuracy and completeness of the information, including third party information, on which these updates are based. The AHO regards third parties from which it receives information as reliable, however the AHO cannot verify all such information and errors may therefore exist. The AHO does not accept liability for errors in third party information.

GENERAL INSTRUCTIONS

The substance of these notices should be inserted on the charts affected.

Bearings are referred to the true compass and are reckoned clockwise from North; those relating to lights are given as seen by an observer from seaward.

Positions quoted in notices relate to WGS84 which is the horizontal datum for all charts produced by the Australian Hydrographic Office.

The range quoted for a light is its nominal range.

Depths are with reference to the chart datum of each chart. Heights are above mean high water springs or mean higher high water, as appropriate.

The capital letter (P) or (T) after the number of any notice denotes a preliminary or temporary notice respectively, which are contained separately at the end of the permanent notices.

REPORTING OF DANGERS

Mariners are particularly requested to notify the AUSTRALIAN HYDROGRAPHIC OFFICE, Locked Bag 8801 Wollongong, NSW 2500 (Fax 02-4223 6599, e-mail datacentre@hydro.gov.au or, alternatively by filling in and submitting the [Hydrographic Notes](#) forms located on the web site – www.hydro.gov.au), immediately on the discovery of new dangers or suspected dangers to navigation. For changes or defects in aids to navigation notify AusSAR (Fax 02-6230 6868 or email rccaus@amsa.gov.au).

AUTHORISED USE

Copies of Australian notices are available free of charge from the Australian Hydrographic Office (AHO) website (www.hydro.gov.au) and through the eNotices (email) service (www.hydro.gov.au/enotices/enotices.htm).

Individual Notices may be copied for the purpose of inserting Notice substance on official charts and publications. Paper copies may be printed by chart agents and distributed to customers on a cost recovery basis. Participating chart agents are listed on the AHO website as providing a 'Paper Notices to Mariners' service (www.hydro.gov.au/webapps/jsp/agents/agents-list.jsp). Copies of the notices may not be sold for profit without prior written agreement.

NUMERICAL INDEX OF NOTICES TO MARINERS

Edition No 13

Notices	Aus Chart, INT Chart, ENC Cell, AHP, BA Pubs
467	Aus 309, 310, 722, PNG 2000, 2001
468	Products - New Charts and New Editions to be published shortly
469	Amendment to Australian National Tide Tables 2022
470	Cessation of Printed Nautical Publications
471	Amendment to Papua New Guinea National Tide Tables 2022
472	Aus 817
473	Aus 817
474	Aus 236
475	Aus 236
476	Aus 316, 720
477	Aus 25
478	Aus 311
479	Aus 730
480	Aus 485
481	Aus 144
482	Aus 143, 155
483	Aus 171, 173
484	Aus 171
485	Aus 177
486(T)	Aus 255
487(T)	Aus 255
488(T)	Aus 255
489(T)	Aus 238
490(T)	Aus 814
491(T)	Aus 236
492(T)	Aus 236
493(T)	Aus 236
494(T)	Aus 236
495(T)	Aus 236
496(T)	Aus 236
497(T)	Aus 236
498(T)	Aus 367, 490, 822
499(T)	Aus 4
500(T)	PNG 509
501(T)	Aus 309, 316
502(T)	Aus 309, 316, 722
503(T)	Aus 306, 715
504(T)	Aus 328
505(T)	Aus 328, 4723, INT 723
506(T)	Aus 65, 327, 742, 743
507(T)	Aus 319, 320
508(T)	Aus 329
509(T)	Aus 112
510(T)	Aus 343, 485, 776
511(T)	Aus 157
512(T)	Aus 143, 144

NUMERICAL INDEX OF CHARTS AFFECTED

Edition No 13

Aus Chart	Notices
Aus 4	499(T)
Aus 25	477
Aus 65	506(T)
Aus 112	509(T)
Aus 143	482, 512(T)
Aus 144	481, 512(T)
Aus 155	482
Aus 157	511(T)
Aus 171	483, 484
Aus 173	483
Aus 177	485
Aus 236	474, 475, 491(T), 492(T), 493(T), 494(T), 495(T), 496(T), 497(T)
Aus 238	489(T)
Aus 255	486(T), 487(T), 488(T)
Aus 306	503(T)
Aus 309	467, 501(T), 502(T)
Aus 310	467
Aus 311	478
Aus 316	476, 501(T), 502(T)
Aus 319	507(T)
Aus 320	507(T)
Aus 327	506(T)
Aus 328	504(T), 505(T)
Aus 329	508(T)
Aus 343	510(T)
Aus 367	498(T)
Aus 485	480, 510(T)
Aus 490	498(T)
Aus 715	503(T)
Aus 720	476
Aus 722	467, 502(T)
Aus 730	479
Aus 742	506(T)
Aus 743	506(T)
Aus 776	510(T)
Aus 814	490(T)
Aus 817	472, 473
Aus 822	498(T)
Aus 4723	505(T)
PNG 509	500(T)
PNG 2000	467
PNG 2001	467

INT Chart	Notices
INT 723	505(T)

467 AUSTRALIA - Products - New Charts, New Editions, Withdrawn Charts

Australian Hydrographic Office

New Charts

<i>Chart</i>	<i>Title and Geographical limits</i>	<i>Scale</i>	<i>Publication Date</i>	<i>Remarks</i>
PNG 2000	Papua New Guinea Index of Nautical Charts		24 June 2022	
PNG 2001	Papua New Guinea Index of Electronic Navigational Charts		24 June 2022	

New Electronic Navigation Chart (Aus ENC)

<i>Cell Name</i>	<i>Title</i>	<i>Publication Date</i>	<i>Remarks</i>
NIL			

New Editions and Withdrawn Charts

<i>Chart</i>	<i>Title</i>	<i>Scale</i>	<i>Publication Date</i>	<i>Remarks</i>
Aus 309 (Edition 3)	Australia - North Coast - Darwin to Penguin Shoal (Eastern Sheet)	1:300 000	24 June 2022	New edition with general updating throughout; including latest bathymetric data. Chart Aus 309 Edition 2 dated 25 September 2015 is now superseded and must be withdrawn from use.
Aus 310 (Edition 4)	Australia - Indonesia - Cape Van Diemen to Pulau Masela	1:300 000	24 June 2022	New edition with general updating throughout; including latest bathymetric data. Chart Aus 310 Edition 3 dated 25 April 2008 is now superseded and must be withdrawn from use.

Charts withdrawn without replacement

<i>Chart</i>	<i>Title</i>	<i>Scale</i>	<i>Remarks</i>
Aus 722 Edition 5	Australia - North Coast - Northern Territory - Beagle Gulf and Clarence Strait	1:150 000	19 February 2021

Chart permanently withdrawn

Charts listed above as withdrawn no longer meet chart carriage requirements and should be marked as "superseded" and replaced with the new chart/ new edition listed prior to passage through the area covered by the new chart.

When placing orders with a chart agent between notice of forthcoming edition and its publication, mariners should advise whether their order pertains to the current edition or the new edition.

For further details refer to the AHO website at www.hydro.gov.au for new edition and new chart stock arrival information.

468 AUSTRALIA - Products - New Charts and New Editions to be published shortly

Australian Hydrographic Office

New Charts to be published shortly

<i>Chart</i>	<i>Title</i>	<i>Scale</i>	<i>Remarks</i>
NIL			

New Editions to be published shortly

<i>Chart</i>	<i>Title</i>	<i>Scale</i>	<i>Remarks</i>
NIL			

469 AUSTRALIA - Product - Amendment to Australian National Tide Tables 2022

Australian Hydrographic Office

ANTT 2022

Page 351

Amend

Port Adelaide Outer Harbor Correction to Chart Datum AUS 130 NE 13 MAY 2022 0.0

470 AUSTRALIA - Product - Cessation of Printed Nautical Publications

Australian Hydrographic Office

The Australian Hydrographic Office (AHO) notes a significant shift in demand to digital publications and accordingly will cease providing printed publications with immediate effect. Affected AHO products are: Australian National Tides Tables (AHP11) and the Mariner's Handbook for Australian Waters (AHP20). Digital publications obtained from the AHO website provide mariners with the latest maritime information on demand, improving maritime awareness and safety.

AHP11 and AHP20 digital publications are available from the Product Downloads section of the AHO website at www.hydro.gov.au/webapps/jsp/downloads/products.jsp. Mariners should also subscribe to eNotices at www.hydro.gov.au/enotices/enotices.htm to be notified by email when new updates are available to download.

471 PAPUA NEW GUINEA - Product - Amendment to Papua New Guinea National Tide Tables 2022

Australian Hydrographic Office

PNGNTT 2022

Page 94

Insert

Kerema Bay - Offshore Corrections to Chart Datum PNG 502 NC 30 OCT 2020 0.0

Delete

Kerema Bay - Offshore Corrections to Chart Datum AUS 502 NC 15 JUL 2011 0.0

472 AUSTRALIA - QUEENSLAND - Hervey Bay - Burrum River - Beacon

Maritime Safety Queensland Notice 267/2022

Aus 817 [254/2022]

Delete

beacon

25° 10'.4 S

152° 38'.9 E

473 AUSTRALIA - QUEENSLAND - Hervey Bay - Beelbi Creek - Depth

Maritime Safety Queensland

Aus 817 [472/2022]

Insert

drying height, Q_gm , and extend contour NE to enclose

25° 13'.92 S

152° 40'.60 E

474 AUSTRALIA - QUEENSLAND - Moreton Bay - Deception Bay - Nav aids

Maritime Safety Queensland

Aus 236 [439/2022]

Replace

light beacon with special cylindrical light buoy, *Fl. Y. 3s*, without topmark

27° 08'.1 S

153° 05'.4 E

475 AUSTRALIA - QUEENSLAND - Moreton Bay - Bribie Island - South Point - Light beacon; light buoy

Maritime Safety Queensland

Aus 236 [474/2022]

Replace

light beacon with starboard lateral conical light buoy, *Fl. G. 2.5s*, without topmark

27° 06'.6 S

153° 10'.8 E

476 AUSTRALIA - NORTHERN TERRITORY - Beagle Gulf - Chart withdrawn; chart limits; ZOC diagram; chart note

Australian Hydrographic Office

Aus 316 [NE 30/4/2021]

Insert	magenta limits with legend, <i>Aus 25</i> , in NW corner, between	12° 16'.00 S	130° 38'.07 E
		12° 16'.00 S	130° 36'.20 E
		12° 29'.28 S	130° 36'.20 E
		12° 29'.28 S	130° 38'.07 E
	accompanying ZOC diagram	14° 52'.0 S	130° 27'.0 E
Delete	magenta limits with legend, <i>Aus 722</i> , centred on	12° 25'.0 S	130° 14'.0 E

Aus 720 [814/2021]

Insert	accompanying ZOC diagram	11° 24'.0 S	132° 38'.0 E
	accompanying note, MARINE FARMS (<i>on certain copies only</i>)	11° 33'.5 S	131° 18'.0 E
	accompanying block	12° 04'.0 S	131° 15'.0 E
Delete	magenta legend, Adjoining Chart <i>Aus 722</i> , in W border	12° 00'.0 S	131° 10'.1 E

477 AUSTRALIA - NORTHERN TERRITORY - Darwin - Lee Point - Artificial reef

Australian Hydrographic Office

Aus 25 [418/2022]

Replace	minimum depth, 6 ₃ m, with minimum depth, 5m	12° 18'.14 S	130° 51'.77 E
---------	---	--------------	---------------

478 AUSTRALIA - TIMOR SEA - Cape Van Diemen to Pulau Masela - ZOC Diagram

Australian Hydrographic Office

Aus 311 [415/2020]

Delete	magenta legend, <i>B</i> and enclosing pecked line	08° 56'.6 S	127° 28'.6 E
--------	--	-------------	--------------

479 AUSTRALIA - WESTERN AUSTRALIA - Camden Sound - Depths westwards

Australian Hydrographic Office

Aus 730 [1019/2021]

Insert	accompanying block	15° 30'.0 S	124° 05'.0 E
--------	--------------------	-------------	--------------

480 AUSTRALIA - SOUTH AUSTRALIA - Gulf St Vincent - Depths

Australian Hydrographic Office

Aus 485 [267/2022]

Insert	accompanying block	35° 03'.0 S	137° 52'.0 E
--------	--------------------	-------------	--------------

481 AUSTRALIA - VICTORIA - Port Phillip - Observatory Point - Artificial reefs

Subcon

Aus 144 [474/2021]

Insert	fish haven with minimum depth, 19 ₅ m, centred on	38° 17'.922 S	144° 40'.653 E
	fish haven with minimum depth, 20 ₅ m, centred on	38° 17'.955 S	144° 40'.666 E
	fish haven with minimum depth, 28 ₆ m, centred on	38° 17'.968 S	144° 40'.591 E
	fish haven with minimum depth, 21 ₇ m, centred on	38° 17'.994 S	144° 40'.605 E

482 AUSTRALIA - VICTORIA - Port Phillip - Werribee South - Light

Parks Victoria Notice 225/2022

Aus 143 [444/2022]

Amend	light to <i>F.G</i>	37° 58'.4 S	144° 41'.2 E
-------	---------------------	-------------	--------------

Aus 155 [444/2022]

Amend	light to <i>F.G</i>	37° 58'.38 S	144° 41'.22 E
-------	---------------------	--------------	---------------

483 AUSTRALIA - TASMANIA - D'Entrecasteaux Channel - Little Oyster Cove - Light buoy

Marine and Safety Tasmania Notice 2022-M222

Aus 171 [445/2022]

Insert	port lateral cylindrical light buoy, <i>Fl.R.5s</i> , with topmark	43° 07'.64 S	147° 15'.81 E
--------	--	--------------	---------------

Aus 173 [385/2022]

Insert	port lateral cylindrical light buoy, <i>Fl.R.5s</i> , with topmark	43° 07'.64 S	147° 15'.81 E
--------	--	--------------	---------------

484 AUSTRALIA - TASMANIA - Hobart - Tasman Bridge - Wreck

Veris

Aus 171 [483/2022]

Replace	wreck depth, 12 ₅ m, with wreck depth, 13 ₆ m	42° 51'.9 S	147° 20'.8 E
---------	---	-------------	--------------

485 AUSTRALIA - TASMANIA - Macquarie Harbour - Nav aids

Australian Hydrographic Office

Aus 177 [NE 11/6/2021]

Delete	beacon	42° 10'.3 S	145° 19'.7 E
	beacon and legend, 2Bns	42° 14'.0 S	145° 13'.3 E
	dashed and continuous line with legend, 296·5°, emanating from beacon	42° 14'.0 S	145° 13'.3 E

486(T)/2022 AUSTRALIA - QUEENSLAND - Abbot Point - Scientific instrument
 Maritime Safety Queensland Notice 256(T)/2022

A special spherical light buoy, *Fl(5)Y.20s*, exists in position 19° 51'.59 S 148° 05'.63 E.

Chart temporarily affected - Aus 255

487(T)/2022 AUSTRALIA - QUEENSLAND - Abbot Point - Shoal
Former Notice - 1255(P)/2019 is cancelled
 Maritime Safety Queensland

Cancel this notice on receipt.

Chart formerly affected - Aus 255

488(T)/2022 AUSTRALIA - QUEENSLAND - Abbot Point - Virtual AIS; light charted
Former Notice - 784(P)/2021 is cancelled
 Maritime Safety Queensland

Cancel this notice on receipt.

Chart formerly affected - Aus 255

489(T)/2022 AUSTRALIA - QUEENSLAND - Brisbane River - Upper Lytton Reach - Light buoys recovered
Former Notice - 233(T)/2022 is cancelled
 Maritime Safety Queensland

Cancel this notice on receipt.

Chart formerly affected - Aus 238

490(T)/2022 AUSTRALIA - QUEENSLAND - Gold Coast Seaway - Light buoy destroyed eastwards
 Maritime Safety Queensland Notice 266/2022

The special light buoy, *Fl.Y.4s* (27° 54'.93 S 153° 27'.59 E), has been destroyed and has sunk in position.

Mariners are advised to navigate with caution in the area.

Chart temporarily affected - Aus 814

491(T)/2022 AUSTRALIA - QUEENSLAND - Moreton Bay - Rainbow Channel - Light beacon relit
Former Notice - 1261(T)/2019 is cancelled
 Australian Hydrographic Office

Cancel this notice on receipt.

Chart formerly affected - Aus 236

492(T)/2022 AUSTRALIA - QUEENSLAND - Moreton Bay - Mud Island - Light buoy restored
Former Notice - 73(T)/2021 is cancelled
 Australian Hydrographic Office

Cancel this notice on receipt.

Chart formerly affected - Aus 236

493(T)/2022 AUSTRALIA - QUEENSLAND - Moreton Bay - Mud Island - Light beacon relit northwards

Former Notice - 166(T)/2022 is cancelled
Australian Hydrographic Office

Cancel this notice on receipt.

Chart formerly affected - Aus 236

494(T)/2022 AUSTRALIA - QUEENSLAND - Moreton Bay - Middle Banks - Light beacon relit southwestwards

Former Notice - 845(T)/2021 is cancelled
Australian Hydrographic Office

Cancel this notice on receipt.

Chart formerly affected - Aus 236

495(T)/2022 AUSTRALIA - QUEENSLAND - Moreton Bay - Deception Bay - Light beacon

Former Notice - 526(T)/2017 is cancelled
Maritime Safety Queensland

Cancel this notice on receipt.

Chart formerly affected - Aus 236

496(T)/2022 AUSTRALIA - QUEENSLAND - Moreton Bay - Bribie Island - South Point - Light beacon

Former Notice - 328(T)/2017 is cancelled
Maritime Safety Queensland

Cancel this notice on receipt.

Chart formerly affected - Aus 236

497(T)/2022 AUSTRALIA - QUEENSLAND - Moreton Island - Kounungai - Light beacon restored

Former Notice - 552(T)/2019 is cancelled
Australian Hydrographic Office

Cancel this notice on receipt.

Chart formerly affected - Aus 236

498(T)/2022 AUSTRALIA - QUEENSLAND - Shoalwater Bay - Live firing completed

Former Notice - 392(T)/2022 is cancelled
Maritime Safety Queensland

Cancel this notice on receipt.

Chart formerly affected - Aus 367 - Aus 490 - Aus 822

499(T)/2022 AUSTRALIA - QUEENSLAND - Weipa - Cora Bank - Light beacon restored

Former Notice - 126(T)/2022 is cancelled
Maritime Safety Queensland Notice 259/2022

Cancel this notice on receipt.

Chart formerly affected - Aus 4

500(T)/2022 PAPUA NEW GUINEA - Tonoie Island to Dekatuwe Island - Light beacons unlit

National Maritime Safety Authority PNG Notice 9/2022, 10/2022

The light beacons, *Fl.G.5s 5m 5M* (10° 28'.45 S 151° 13'.56 E) and *Fl.2.5s 16m 10M* (10° 31'.89 S 151° 12'.74 E), are unlit.

Chart temporarily affected - PNG 509

501(T)/2022 AUSTRALIA - NORTHERN TERRITORY - Bass Reef - Obstruction

Department of Infrastructure, Planning and Logistics NT Coastal Notice 1(T)/2020

A ghost net has been reported in position 12° 27'.82 S 130° 19'.12 E.

Mariners are advised to navigate with caution in the area.

Chart temporarily affected - Aus 309 - Aus 316

502(T)/2022 AUSTRALIA - NORTHERN TERRITORY - Bass Reef - Obstruction

Former Notice - 462(T)/2020 is cancelled

Department of Infrastructure, Planning and Logistics NT Coastal Notice 1(T)/2020

Cancel this notice on receipt.

Chart formerly affected - Aus 309 - Aus 316 - Aus 722

503(T)/2022 AUSTRALIA - NORTHERN TERRITORY - Port Bradshaw - Space debris

Equatorial Launch Australia

During the period 26 to 29 June, 4 to 6 July and 12 to 14 July 2022 there is a risk of debris landing in an area bounded by the following positions:

12° 29'.73 S 136° 40'.93 E

12° 33'.97 S 136° 47'.20 E

12° 27'.47 S 136° 51'.78 E

12° 15'.28 S 136° 48'.55 E.

Mariners are advised to navigate with caution in the area.

Chart temporarily affected - Aus 306 - Aus 715

504(T)/2022 AUSTRALIA - WESTERN AUSTRALIA - Barrow Island - Subsea operations northwestwardsMV *Pride*

On or about 28 June 2022, MV *Pride* will be conducting subsea operations in the vicinity of positions 19° 48'.0 S 114° 36'.00 E and 20° 30'.00 S 114° 54'.00 E.

Mariners are advised to navigate with caution in the area.

Chart temporarily affected - Aus 328

505(T)/2022 AUSTRALIA - WESTERN AUSTRALIA - Barrow Island - Subsea operations northwestwards completed

Former Notice - 911(T)/2019 is cancelled

Chevron Australia

Cancel this notice on receipt.

Chart formerly affected - Aus 328 - Aus 4723 (INT 723)

506(T)/2022 AUSTRALIA - WESTERN AUSTRALIA - Barrow Island - Maintenance operations completed

Former Notice - 395(T)/2022 is cancelled

Chevron Australia

Cancel this notice on receipt.

Chart formerly affected - Aus 65 - Aus 327 - Aus 742 - Aus 743

507(T)/2022 AUSTRALIA - WESTERN AUSTRALIA - Browse Island - Drill rig northwestwards*Former Notice - 852(T)/2021 is cancelled**MODU Maersk Deliverer*Drill rig *Maersk Deliverer* is conducting drilling operations in position 13° 49'.47 S 123° 12'.80 E.**Chart temporarily affected - Aus 319 - Aus 320****508(T)/2022 AUSTRALIA - WESTERN AUSTRALIA - Exmouth Plateau - Drill rig***Former Notice - 400(T)/2022 is cancelled**MODU Valaris MS-1*

Cancel this notice on receipt.

Chart formerly affected - Aus 329**509(T)/2022 AUSTRALIA - WESTERN AUSTRALIA - Trigg Island - Scientific instruments westwards***Former Notice - 498(T)/2020 is cancelled*

Department of Transport WA Notice 66/2020

Special light buoys exist as follows:

<i>Position</i>	<i>Remarks</i>
31° 52'.70 S 115° 43'.11 E	Q(5)Y.20s
31° 52'.59 S 115° 43'.12 E	Q(5)Y.20s
31° 52'.53 S 115° 43'.32 E	Fl. Y.5s.

Chart temporarily affected - Aus 112**510(T)/2022 AUSTRALIA - SOUTH AUSTRALIA - Spencer Gulf - Thistle Island - Defence trials completed***Former Notice - 402(T)/2022 is cancelled*

Department for Infrastructure and Transport SA Notice 9(T)/2022

Cancel this notice on receipt.

Chart formerly affected - Aus 343 - Aus 485 - Aus 776**511(T)/2022 AUSTRALIA - VICTORIA - Port Phillip - Point Wilson Bank - Light beacon relit***Former Notice - 465(T)/2022 is cancelled*

Parks Victoria Notice 226/2022

Cancel this notice on receipt.

Chart formerly affected - Aus 157**512(T)/2022 AUSTRALIA - VICTORIA - Port Phillip - Observatory Point - Artificial reef***Former Notice - 428(T)/2022 is cancelled*

Subcon

Cancel this notice on receipt.

Chart formerly affected - Aus 143 - Aus 144

II

HYDROGRAPHIC REPORTS

NIL

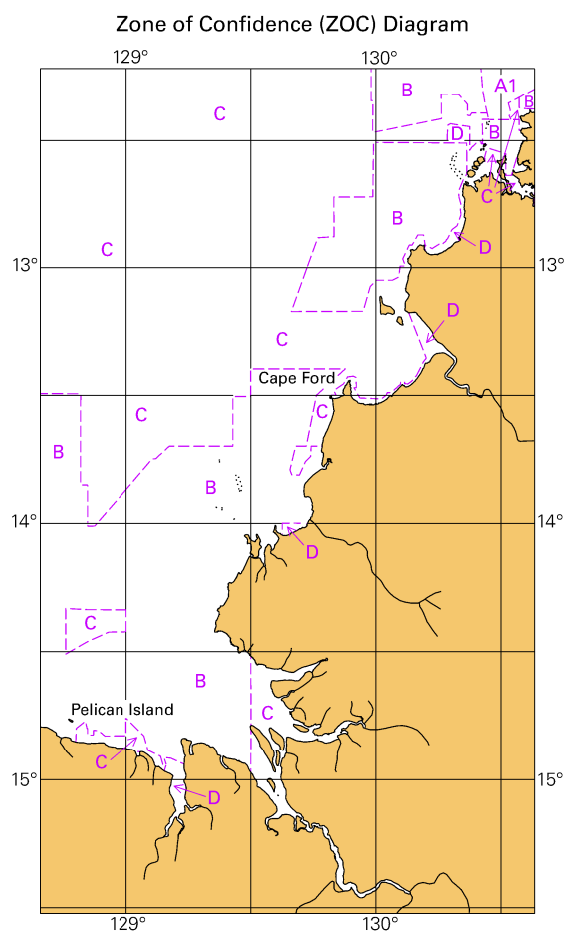
To accompany Australian Notice to Mariners 476/2022

MARINE FARMS

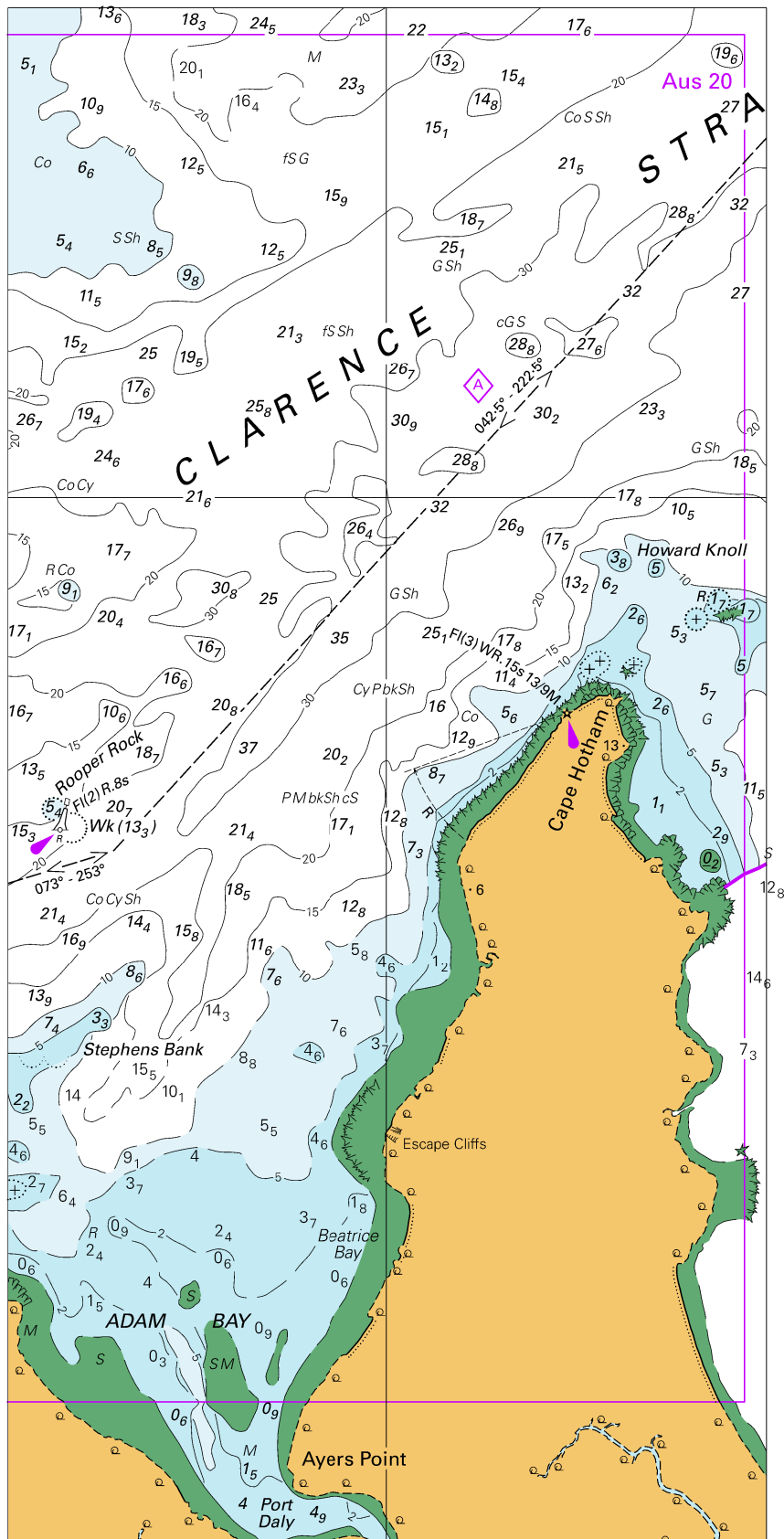
Marine farms, which may be floating or fixed structures and their associated moorings should be avoided. The farms are generally marked by buoys or beacons, which may be lit. Their charted positions are approximate.

Note for chart Aus 720

To accompany Australian Notice to Mariners 476/2022

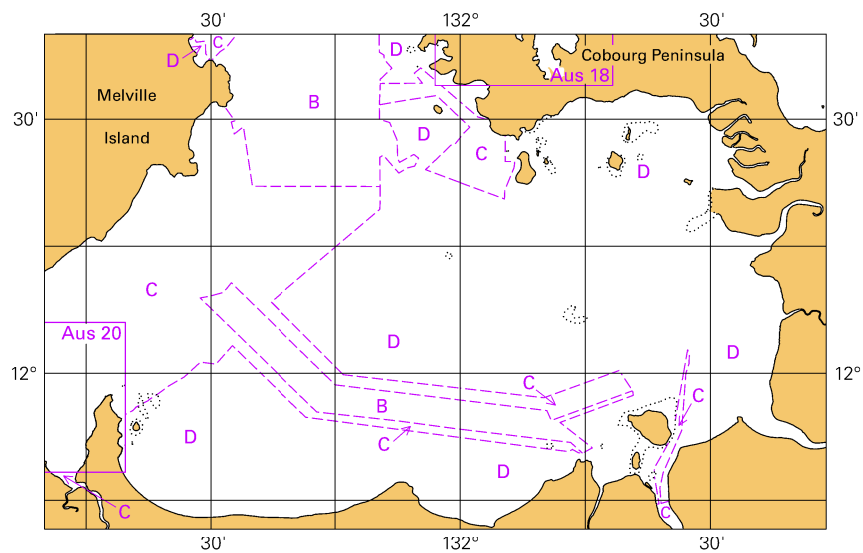


Block for chart Aus 316 (65.3 x 111.8mm)
© Commonwealth of Australia 2022



To accompany Australian Notice to Mariners 476/2022

Zone of Confidence (ZOC) Diagram

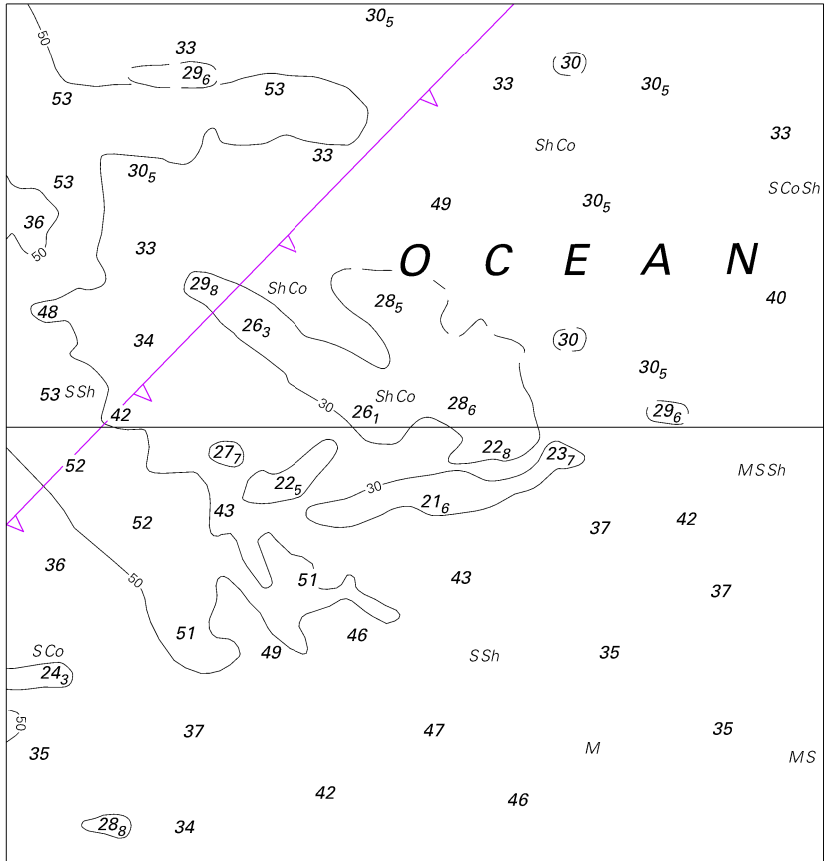


Block for chart Aus 720

(103.3 x 65.3mm)

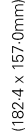
© Commonwealth of Australia 2022

To accompany Australian Notice to Mariners 479/2022



Block for chart Aus 730 © Commonwealth of Australia 2022

(108.0 x 114.0mm)



Aus 781

Block for chart Aus485