



10 June 2022

Edition 12

AUSTRALIAN NOTICES TO MARINERS

Notices 431 - 466

Published fortnightly by the Australian Hydrographic Office



Australian Notices to Mariners are the authority for correcting charts and publications published by the Australian Hydrographic Office covering Australia, Papua New Guinea, Solomon Islands, Australian Antarctic Territory and Timor-Leste.

Commodore S.T. DUNNE RAN
Hydrographer of Australia

SECTIONS.

- I. **Australian Notices to Mariners, including blocks and notes.**
- II. **Hydrographic Reports.**

SUPPLEMENTS.

- I. **Tracings**
- II. **Cumulative List of Australian Notices to Mariners.**
- III. **Cumulative List of Temporary and Preliminary Australian Notices to Mariners.**
- IV. **Temporary and Preliminary Notices in force.**

© Commonwealth of Australia 2022

This work is copyright. Apart from any use permitted under the Copyright Act 1968, no part may be reproduced by any process, adapted, communicated or commercially exploited without prior written permission from The Commonwealth represented by the Australian Hydrographic Office.

IMPORTANT NOTICE

This edition of Notices to Mariners includes all significant information affecting AHO products which the AHO has become aware of since the last edition. All reasonable efforts have been made to ensure the accuracy and completeness of the information, including third party information, on which these updates are based. The AHO regards third parties from which it receives information as reliable, however the AHO cannot verify all such information and errors may therefore exist. The AHO does not accept liability for errors in third party information.

GENERAL INSTRUCTIONS

The substance of these notices should be inserted on the charts affected.

Bearings are referred to the true compass and are reckoned clockwise from North; those relating to lights are given as seen by an observer from seaward.

Positions quoted in notices relate to WGS84 which is the horizontal datum for all charts produced by the Australian Hydrographic Office.

The range quoted for a light is its nominal range.

Depths are with reference to the chart datum of each chart. Heights are above mean high water springs or mean higher high water, as appropriate.

The capital letter (P) or (T) after the number of any notice denotes a preliminary or temporary notice respectively, which are contained separately at the end of the permanent notices.

REPORTING OF DANGERS

Mariners are particularly requested to notify the AUSTRALIAN HYDROGRAPHIC OFFICE, Locked Bag 8801 Wollongong, NSW 2500 (Fax 02-4223 6599, e-mail datacentre@hydro.gov.au or, alternatively by filling in and submitting the [Hydrographic Notes](#) forms located on the web site – www.hydro.gov.au), immediately on the discovery of new dangers or suspected dangers to navigation. For changes or defects in aids to navigation notify AusSAR (Fax 02-6230 6868 or email rccaus@amsa.gov.au).

AUTHORISED USE

Copies of Australian notices are available free of charge from the Australian Hydrographic Office (AHO) website (www.hydro.gov.au) and through the eNotices (email) service (www.hydro.gov.au/enotices/enotices.htm).

Individual Notices may be copied for the purpose of inserting Notice substance on official charts and publications. Paper copies may be printed by chart agents and distributed to customers on a cost recovery basis. Participating chart agents are listed on the AHO website as providing a 'Paper Notices to Mariners' service (www.hydro.gov.au/webapps/jsp/agents/agents-list.jsp). Copies of the notices may not be sold for profit without prior written agreement.

NUMERICAL INDEX OF NOTICES TO MARINERS

Edition No 12

Notices	Aus Chart, INT Chart, ENC Cell, AHP, BA Pubs
431	Aus 192, 780, 781
432	Aus 310, 722
433	Aus 200
434	Aus 195
435	Aus 198, 200
436	Aus 255, 826
437	Aus 301
438	Aus 236
439	Aus 235, 236
440	Aus 256
441	Aus 116
442	Aus 181
443	Aus 157
444	Aus 143, 155
445	Aus 171, 796
446	Aus 790
447(T)	Aus 489, 807, 808, 4643, INT 643
448(T)	Aus 831
449(T)	Aus 819
450(T)	Aus 249, 250
451(T)	Aus 6
452(T)	Aus 814
453(T)	Aus 265
454(T)	Aus 256, 827
455(T)	Aus 256
456(T)	Aus 309, 310, 721, 4721, INT 721
457(T)	Aus 327
458(T)	Aus 327
459(T)	Aus 327
460(T)	Aus 328
461(T)	Aus 53
462(T)	Aus 53
463(T)	Aus 143
464(T)	Aus 155
465(T)	Aus 157
466(T)	Aus 143

NUMERICAL INDEX OF CHARTS AFFECTED

Edition No 12

Aus Chart	Notices
Aus 6	451(T)
Aus 53	461(T), 462(T)
Aus 116	441
Aus 143	444, 463(T), 466(T)
Aus 155	444, 464(T)
Aus 157	443, 465(T)
Aus 171	445
Aus 181	442
Aus 192	431
Aus 195	434
Aus 198	435
Aus 200	433, 435
Aus 235	439
Aus 236	438, 439
Aus 249	450(T)
Aus 250	450(T)
Aus 255	436
Aus 256	440, 454(T), 455(T)
Aus 265	453(T)
Aus 301	437
Aus 309	456(T)
Aus 310	432, 456(T)
Aus 327	457(T), 458(T), 459(T)
Aus 328	460(T)
Aus 489	447(T)
Aus 721	456(T)
Aus 722	432
Aus 780	431
Aus 781	431
Aus 790	446
Aus 796	445
Aus 807	447(T)
Aus 808	447(T)
Aus 814	452(T)
Aus 819	449(T)
Aus 826	436
Aus 827	454(T)
Aus 831	448(T)
Aus 4643	447(T)
Aus 4721	456(T)

INT Chart	Notices
INT 643	447(T)
INT 721	456(T)

431 AUSTRALIA - Products - New Charts, New Editions, Withdrawn Charts

Australian Hydrographic Office

New Charts

<i>Chart</i>	<i>Title and Geographical limits</i>	<i>Scale</i>	<i>Publication Date</i>	<i>Remarks</i>
NIL				

New Electronic Navigation Chart (Aus ENC)

<i>Cell Name</i>	<i>Title</i>	<i>Publication Date</i>	<i>Remarks</i>
NIL			

New Editions and Withdrawn Charts

<i>Chart</i>	<i>Title</i>	<i>Scale</i>	<i>Publication Date</i>	<i>Remarks</i>
Aus 192	Australia - East Coast - New South Wales - Two fold Bay Plans: Eden East Boyd Bay Wharves	1:25 000 1:7 500 1:7 500	9 June 2022	New edition with general updating throughout; including latest bathymetric data. Chart Aus 192 Edition 4 dated 6 September 2019 is now superseded and must be withdrawn from use.
Aus 780	Australia - South Coast - South Australia - Althorpe Islands to Bakestairs Passage	1:150 000	9 June 2022	New edition with general updating throughout; including latest bathymetric data. Chart Aus 780 Edition 2 dated 18 March 2022 is now superseded and must be withdrawn from use.
Aus 781	Australia - South Coast - South Australia - Gulf St Vincent	1:150 000	9 June 2022	New edition with general updating throughout; including latest bathymetric data. Chart Aus 781 Edition 1 dated 8 October 2010 is now superseded and must be withdrawn from use.

Chart permanently withdrawn

Charts listed above as withdrawn no longer meet chart carriage requirements and should be marked as "superseded" and replaced with the new chart/ new edition listed prior to passage through the area covered by the new chart.

When placing orders with a chart agent between notice of forthcoming edition and its publication, mariners should advise whether their order pertains to the current edition or the new edition.

For further details refer to the AHO website at www.hydro.gov.au for new edition and new chart stock arrival information.

432 AUSTRALIA - Products - New Charts and New Editions to be published shortly

Australian Hydrographic Office

New Charts to be published shortly

Chart	Title	Scale	Remarks
PNG 2000	Papua New Guinea Index of Navigational Charts		
PNG 2001	Papua New Guinea Index of Electronic Navigational Charts		

New Editions to be published shortly

Chart	Title	Scale	Remarks
Aus 310	Australia - Indonesia - Cape Van Diemen to Pulau Masela	1:300 000	New edition with general updating throughout; including latest bathymetric data.

Charts to be withdrawn without replacement 24 June 2022

Chart	Title	Scale	Remarks
Aus 722 Edition 5	Australia - North Coast - Northern Territory - Beagle Gulf and Clarence Strait	1:150 000	19 February 2021

433 AUSTRALIA - NEW SOUTH WALES - Port Jackson - Darling Harbour - Infrastructure

Port Authority of New South Wales

Aus 200 [142/2022]

Insert	accompanying block B	33° 51'.62 S	151° 13'.66 E
	accompanying block A	33° 51'.8 S	151° 11'.9 E

434 AUSTRALIA - NEW SOUTH WALES - Port Kembla - Light

NSW Ports

Aus 195 [NE 26/11/2021]

Amend	light to <i>F.G & F.R</i>	34° 27'.39 S	150° 53'.10 E
-------	-------------------------------	--------------	---------------

435 AUSTRALIA - NEW SOUTH WALES - Sydney Harbour to Botany Bay - Anchorages

Port Authority of New South Wales

Aus 198 [776/2021]

Insert	anchor berth, desig <i>YBA</i>	33° 59'.319 S	151° 13'.389 E
--------	--------------------------------	---------------	----------------

Aus 200 [433/2022]

Insert	anchor berth, desig <i>AB</i>	33° 51'.117 S	151° 14'.231 E
	anchor berth, desig <i>PP</i>	33° 51'.649 S	151° 14'.830 E
Amend	anchor berth desig to <i>TA</i>	33° 50'.66 S	151° 15'.93 E
	anchor berth desig to <i>WBA</i>	33° 50'.67 S	151° 16'.47 E
	anchor berth desig to <i>BA2</i>	33° 50'.72 S	151° 15'.57 E
	anchor berth desig to <i>BA1</i>	33° 50'.81 S	151° 15'.65 E

436 AUSTRALIA - QUEENSLAND - Abbot Point - Depths

Maritime Safety Queensland

Aus 255 [5/2022]

Insert	accompanying block	19° 50'.58 S	148° 05'.22 E
	accompanying ZOC	19° 55'.5 S	148° 04'.5 E

Aus 826 [5/2022]

Replace	depth, 17 ₉ m, with depth, 18m	19° 51'.4 S	148° 05'.8 E
---------	---	-------------	--------------

437 AUSTRALIA - QUEENSLAND - Carpentaria Shoal to Skardon River - Anchorage; mooring buoys

Transshipment Services Australia

Aus 301 [145/2022]

Insert	accompanying block A	10° 45'.5 S	141° 21'.5 E
	lit mooring buoy, <i>Fl. Y. 3s</i>	11° 44'.66 S	141° 53'.98 E

Amend	legend to <i>Fl. Y. 3s</i>	11° 45'.5 S	141° 51'.7 E
-------	----------------------------	-------------	--------------

Delete	buoy	11° 45'.1 S	141° 54'.5 E
--------	------	-------------	--------------

Aus 301 (Skardon River) [145/2022]

Insert	accompanying block B	11° 45'.57 S	141° 56'.68 E
--------	----------------------	--------------	---------------

438 AUSTRALIA - QUEENSLAND - Moreton Bay - Deception Bay - Light beacon*Former Notice - 720(T)/2019 is cancelled*

Maritime Safety Queensland

Aus 236 [415/2022]

Delete	topmark	27° 09'.2 S	153° 03'.9 E
--------	---------	-------------	--------------

439 AUSTRALIA - QUEENSLAND - Moreton Bay - Spitfire Channel - Depths

Port of Brisbane Corporation

Aus 235 [415/2022]

Insert	depth, 9 _g m, and extend contour SE to enclose	27° 02'.47 S	153° 16'.08 E
--------	---	--------------	---------------

Delete	out of position depth, 11 _g m	27° 02'.5 S	153° 16'.1 E
--------	--	-------------	--------------

Aus 236 [438/2022]

Insert	depth, 9 _g m, and extend contour SE to enclose	27° 02'.47 S	153° 16'.08 E
--------	---	--------------	---------------

Delete	out of position depth, 11 _g m	27° 02'.5 S	153° 16'.1 E
--------	--	-------------	--------------

440 AUSTRALIA - QUEENSLAND - Townsville - Platypus Channel - Light buoy

Maritime Safety Queensland Notice 247/2022

Aus 256 [346/2022]

Move	light buoy	19° 12'.59 S	146° 51'.14 E
	to	19° 12'.521 S	146° 51'.073 E

441 AUSTRALIA - WESTERN AUSTRALIA - Mandurah Estuary - Infrastructure*Former Notice - 970(T)/2020 is cancelled*

Department of Transport WA Notice 95/2020

Aus 116 (Entrance to Mandurah Estuary) [NE 18/3/2022]

Insert	accompanying block	32° 32'.0 S	115° 43'.0 E
--------	--------------------	-------------	--------------

442 AUSTRALIA - VICTORIA - Corner Inlet - Sheep Island - Buoys

Gippsland Ports Notice 199/2022

Aus 181 [633/2021]

Insert	starboard lateral conical buoy, <i>No13</i>	38° 40'.34 S	146° 38'.67 E
	starboard lateral conical buoy, <i>No7</i>	38° 40'.77 S	146° 38'.52 E

Delete	buoy	38° 39'.4 S	146° 39'.5 E
	buoy	38° 39'.6 S	146° 39'.8 E
	buoy	38° 39'.9 S	146° 39'.4 E
	buoy	38° 40'.0 S	146° 39'.2 E
	buoy	38° 40'.2 S	146° 38'.7 E
	buoy	38° 40'.3 S	146° 38'.7 E
	buoy	38° 40'.7 S	146° 38'.6 E

443 AUSTRALIA - VICTORIA - Port Phillip - Point Richards - Light beacon

Parks Victoria Notice 192(T)/2022

Aus 157 [1021/2021]

Delete light beacon

38° 06'.49 S 144° 37'.63 E

444 AUSTRALIA - VICTORIA - Port Phillip - Light beacon

Ports Victoria 207(T)/2022

Aus 143 [1021/2021]Move light beacon
to37° 57'.01 S 144° 51'.43 E
37° 56'.91 S 144° 51'.50 E**Aus 155** [879/2021]Move light beacon
to37° 57'.011 S 144° 51'.429 E
37° 56'.914 S 144° 51'.500 E**445 AUSTRALIA - TASMANIA - Frederick Henry Bay to Pitt Water - Radio towers**

Australian Hydrographic Office

Aus 171 [116/2022]

Replace light and legend (Red Lt) with radio tower

42° 52'.5 S 147° 30'.1 E

Aus 796 [53/2022]Delete radio tower with legend, (R Lt)
radio tower with legend, (R Lt)
legend, (R Lt)42° 46'.0 S 147° 29'.1 E
42° 46'.3 S 147° 29'.4 E
42° 52'.7 S 147° 29'.8 E**446 AUSTRALIA - TASMANIA - Hope Channel - Depth**

CSIRO

Aus 790 [281/2020]

Insert depth, 14,m, enclosed by contour

40° 28'.39 S 144° 49'.68 E

447(T)/2022 AUSTRALIA - NEW SOUTH WALES - Jervis Bay - Military exercise completed

Former Notice - 386(T)/2022 is cancelled
Australian Maritime Safety Authority

Cancel this notice on receipt.

Chart formerly affected - Aus 489 - Aus 807 - Aus 808 - Aus 4643 (INT 643)

448(T)/2022 AUSTRALIA - QUEENSLAND - Daintree River - Light buoy restored

Former Notice - 577(T)/2018 is cancelled
Maritime Safety Queensland

Cancel this notice on receipt.

Chart formerly affected - Aus 831

449(T)/2022 AUSTRALIA - QUEENSLAND - Fitzroy Reef - Buoy restored

Former Notice - 317(T)/2022 is cancelled
Maritime Safety Queensland

Cancel this notice on receipt.

Chart formerly affected - Aus 819

450(T)/2022 AUSTRALIA - QUEENSLAND - Hay Point - Highwater Island - Lights unlit

Maritime Safety Queensland Notice 197(T)/2022

The leading lights, *F.Bu (F Day)* (21° 17'.59 S 149° 18'.16 E) and *F.Bu (F Day)* (21° 17'.57 S 149° 18'.17 E), are unlit.

Chart temporarily affected - Aus 249 - Aus 250

451(T)/2022 AUSTRALIA - QUEENSLAND - Karumba - Dredging operations

Maritime Safety Queensland Notice 252(T)/2022

On or about 19 June 2022, dredge *Brisbane* and vessel *Pacific Quest* are conducting dredging and bed levelling operations in the Port of Karumba (17° 27'.95 S 140° 49'.40 E).

Mariners are advised to navigate with caution in the area.

Chart temporarily affected - Aus 6

452(T)/2022 AUSTRALIA - QUEENSLAND - North Stradbroke Island - Wreck

Maritime Safety Queensland Notice 250/2022

A wreck exists in the vicinity of position 27° 29'.45 S 153° 46'.02 E.

Mariners are advised to navigate with caution in the area.

Chart temporarily affected - Aus 814

453(T)/2022 AUSTRALIA - QUEENSLAND - Port Alma - Sea Reach - Light buoy relit

Former Notice - 423(T)/2022 is cancelled
Maritime Safety Queensland

Cancel this notice on receipt.

Chart formerly affected - Aus 265

454(T)/2022 AUSTRALIA - QUEENSLAND - Rattlesnake Island - Live firing completed*Former Notice - 424(T)/2022 is cancelled*

Maritime Safety Queensland Notice 201(T)/2022

Cancel this notice on receipt.

Chart formerly affected - Aus 256 - Aus 827**455(T)/2022 AUSTRALIA - QUEENSLAND - Townsville - Light beacon unlit**

Maritime Safety Queensland Notice 248(T)/2022

The starboard lateral light beacon, *Iso.G.5s* (19° 14'.43 S 146° 49'.64 E), is unlit; a special light buoy, *Fl.Y.2·5s*, exists in situ.**Chart temporarily affected - Aus 256****456(T)/2022 AUSTRALIA - NORTHERN TERRITORY - Melville Island - Seismic survey northwards completed***Former Notice - 360(T)/2022 is cancelled*

Woodside Energy Ltd

Cancel this notice on receipt.

Chart formerly affected - Aus 309 - Aus 310 - Aus 721 - Aus 4721 (INT 721)**457(T)/2022 AUSTRALIA - WESTERN AUSTRALIA - Dampier Archipelago - Subsea operations northwards completed***Former Notice - 179(T)/2022 is cancelled*

Woodside Energy Ltd

Cancel this notice on receipt.

Chart formerly affected - Aus 327**458(T)/2022 AUSTRALIA - WESTERN AUSTRALIA - Glomar Shoal - Drill rig northwestwards moved***Former Notice - 368(T)/2022 is cancelled*

Australian Maritime Safety Authority

Cancel this notice on receipt.

Chart formerly affected - Aus 327**459(T)/2022 AUSTRALIA - WESTERN AUSTRALIA - Glomar Shoal - Restricted area northwestwards**

National Offshore Petroleum Safety and Environmental Management Authority

A restricted area, with radius 500m, exists centred on position 19° 19'.04 S 116° 21'.45 E.

Chart temporarily affected - Aus 327**460(T)/2022 AUSTRALIA - WESTERN AUSTRALIA - Montebello Islands - Drill rig northwestwards**MODU *Ocean Apex*Drill rig *Ocean Apex* is conducting drilling operations in position 19° 57'.75 S 115° 13'.40 E.**Chart temporarily affected - Aus 328**

461(T)/2022 AUSTRALIA - WESTERN AUSTRALIA - Port Hedland - Scientific instruments

Former Notice - 427(T)/2022 is cancelled
Pilbara Ports Authority Notice PH4(T)/2022

Special light buoys, Q.Y, exist as follows:

<i>Positions</i>	<i>Remarks</i>
20° 16'.79 S 118° 34'.86 E	130m exclusion zone exists around the buoy
20° 17'.11 S 118° 35'.51 E	130m exclusion zone exists around the buoy
20° 17'.25 S 118° 30'.88 E	125m exclusion zone exists around the buoy.

Mariners are advised to navigate with caution in the area.

Chart temporarily affected - Aus 53

462(T)/2022 AUSTRALIA - WESTERN AUSTRALIA - Port Hedland - Scientific instruments recovered

Former Notice - 956(T)/2021 is cancelled
Pilbara Ports Authority

Cancel this notice on receipt.

Chart formerly affected - Aus 53

463(T)/2022 AUSTRALIA - VICTORIA - Port Phillip - Pinnacle Channel - Light buoy off station

Parks Victoria Notice 203(T)/2022

The special light buoy, *Fl(4)Y.12s* (38° 14'.97 S 144° 49'.22 E), is off station.

Chart temporarily affected - Aus 143

464(T)/2022 AUSTRALIA - VICTORIA - Port Phillip - Port Melbourne Channel - Light beacon relit

Former Notice - 338(T)/2022 is cancelled
Ports Victoria Notice 196(T)/2022

Cancel this notice on receipt.

Chart formerly affected - Aus 155

465(T)/2022 AUSTRALIA - VICTORIA - Port Phillip - Point Wilson Bank - Light beacon unlit

Parks Victoria Notice 204(T)/2022

The starboard lateral light beacon, *Fl.G.3s* (38° 06'.68 S 144° 30'.98 E), is unlit.

Chart temporarily affected - Aus 157

466(T)/2022 AUSTRALIA - VICTORIA - Port Phillip - Daveys Bay - Light unlit

Parks Victoria Notice 214(T)/2022

The light, *Fl(2)10s* (38° 09'.32 S 145° 05'.50 E), is unlit.

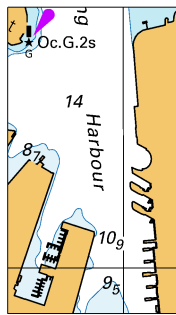
Chart temporarily affected - Aus 143

II

HYDROGRAPHIC REPORTS

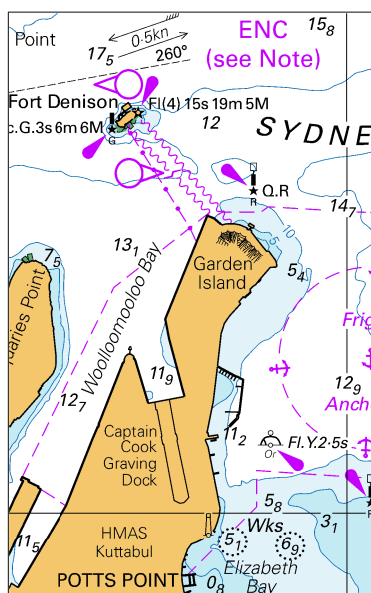
NIL

To accompany Australian Notice to Mariners 433/2022



Block A for chart Aus 200 (23.0 x 40.4mm)
© Commonwealth of Australia 2022

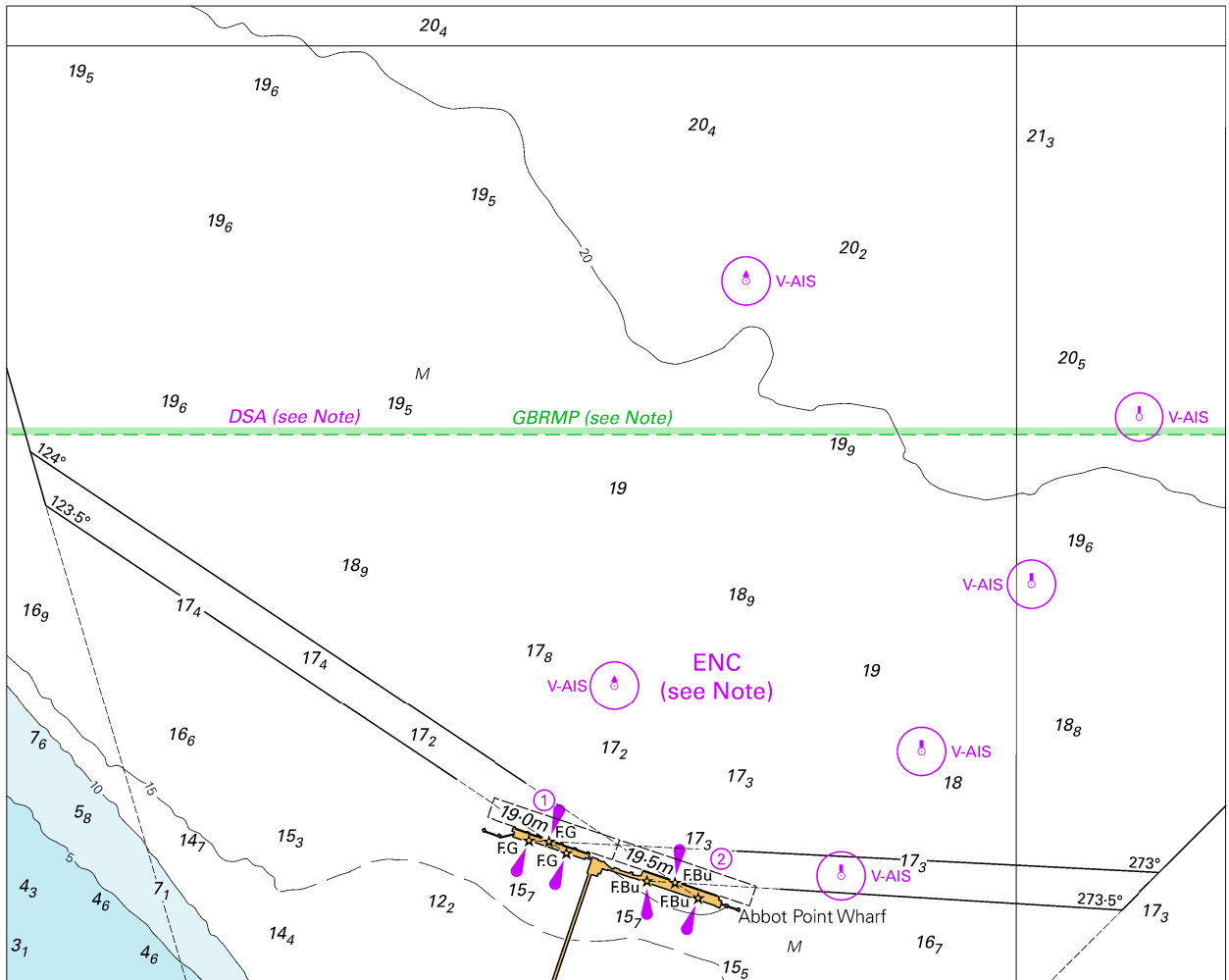
To accompany Australian Notice to Mariners 433/2022



Block B for chart Aus 200 (48.7 x 77.5mm)

© Commonwealth of Australia 2022

To accompany Australian Notice to Mariners 436/2022

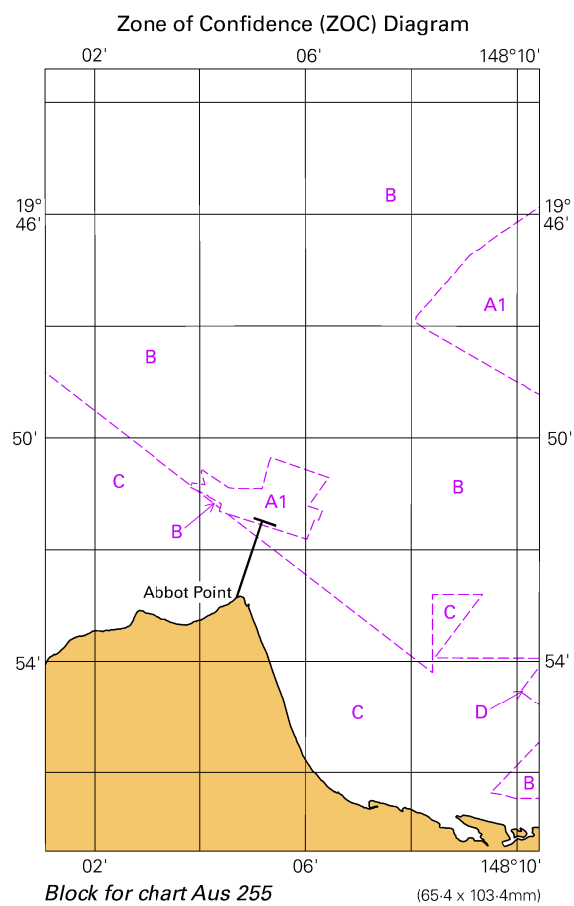


Block for chart Aus 255

© Commonwealth of Australia 2022

(164.4 x 131.6mm)

To accompany Australian Notice to Mariners 436/2022



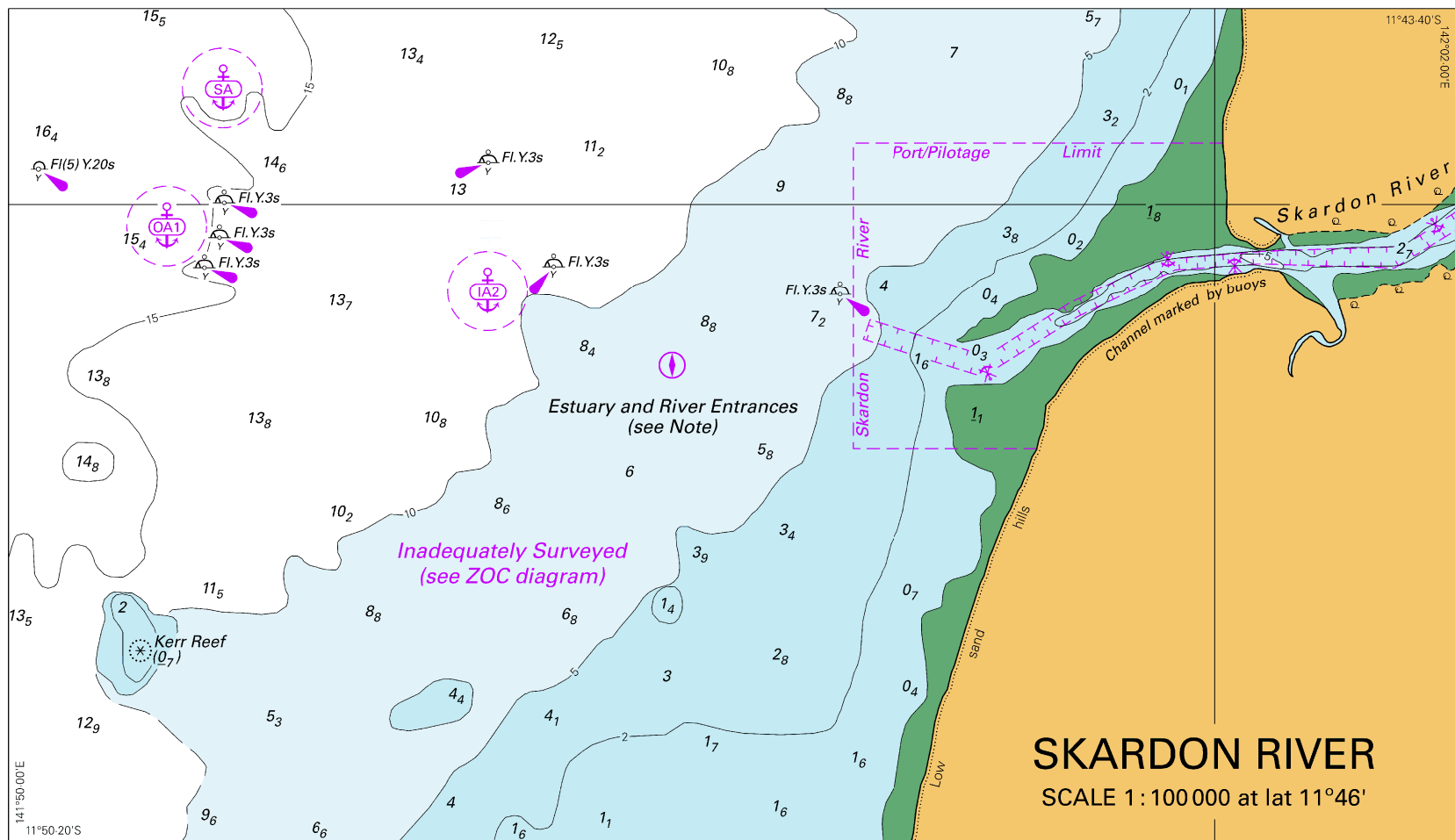
© Commonwealth of Australia 2022

+



(223.1 x 109.3mm)

To accompany Australian Notice to Mariners 437/2022

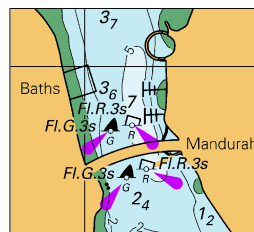


Block B for chart Aus 301

© Commonwealth of Australia 2022

(218.0 x 125.4mm)

To accompany Australian Notice to Mariners 441/2022



Block for chart Aus 116 (33.1 x 29.8mm)
© Commonwealth of Australia 2022