



27 May 2022

Edition 11

AUSTRALIAN NOTICES TO MARINERS

Notices 411 - 430

Published fortnightly by the Australian Hydrographic Office



Australian Notices to Mariners are the authority for correcting charts and publications published by the Australian Hydrographic Office covering Australia, Papua New Guinea, Solomon Islands, Australian Antarctic Territory and Timor-Leste.

Commodore S.T. DUNNE RAN
Hydrographer of Australia

SECTIONS.

- I. **Australian Notices to Mariners, including blocks and notes.**
- II. **Hydrographic Reports.**

SUPPLEMENTS.

- I. **Tracings**
- II. **Cumulative List of Australian Notices to Mariners.**
- III. **Cumulative List of Temporary and Preliminary Australian Notices to Mariners.**
- IV. **Temporary and Preliminary Notices in force.**

© Commonwealth of Australia 2022

This work is copyright. Apart from any use permitted under the Copyright Act 1968, no part may be reproduced by any process, adapted, communicated or commercially exploited without prior written permission from The Commonwealth represented by the Australian Hydrographic Office.

IMPORTANT NOTICE

This edition of Notices to Mariners includes all significant information affecting AHO products which the AHO has become aware of since the last edition. All reasonable efforts have been made to ensure the accuracy and completeness of the information, including third party information, on which these updates are based. The AHO regards third parties from which it receives information as reliable, however the AHO cannot verify all such information and errors may therefore exist. The AHO does not accept liability for errors in third party information.

GENERAL INSTRUCTIONS

The substance of these notices should be inserted on the charts affected.

Bearings are referred to the true compass and are reckoned clockwise from North; those relating to lights are given as seen by an observer from seaward.

Positions quoted in notices relate to WGS84 which is the horizontal datum for all charts produced by the Australian Hydrographic Office.

The range quoted for a light is its nominal range.

Depths are with reference to the chart datum of each chart. Heights are above mean high water springs or mean higher high water, as appropriate.

The capital letter (P) or (T) after the number of any notice denotes a preliminary or temporary notice respectively, which are contained separately at the end of the permanent notices.

REPORTING OF DANGERS

Mariners are particularly requested to notify the AUSTRALIAN HYDROGRAPHIC OFFICE, Locked Bag 8801 Wollongong, NSW 2500 (Fax 02-4223 6599, e-mail datacentre@hydro.gov.au or, alternatively by filling in and submitting the [Hydrographic Notes](#) forms located on the web site – www.hydro.gov.au), immediately on the discovery of new dangers or suspected dangers to navigation. For changes or defects in aids to navigation notify AusSAR (Fax 02-6230 6868 or email rccaus@amsa.gov.au).

AUTHORISED USE

Copies of Australian notices are available free of charge from the Australian Hydrographic Office (AHO) website (www.hydro.gov.au) and through the eNotices (email) service (www.hydro.gov.au/enotices/enotices.htm).

Individual Notices may be copied for the purpose of inserting Notice substance on official charts and publications. Paper copies may be printed by chart agents and distributed to customers on a cost recovery basis. Participating chart agents are listed on the AHO website as providing a 'Paper Notices to Mariners' service (www.hydro.gov.au/webapps/jsp/agents/agents-list.jsp). Copies of the notices may not be sold for profit without prior written agreement.

NUMERICAL INDEX OF NOTICES TO MARINERS

Edition No 11

Notices	Aus Chart, INT Chart, ENC Cell, AHP, BA Pubs
411	Products - New Charts, New Editions, Withdrawn Charts
412	Aus 192, 309, 722, 780, 781
413	AUSTIDES Edition 2 (V1.2.0.0)
414	Aus 813, 814
415	Aus 235, 236
416	Aus 252, 253
417	PNG 516, 637
418	Aus 25
419	Aus 57, 59, 60
420(T)	Aus 830
421(T)	Aus 236
422(T)	Aus 814
423(T)	Aus 265
424(T)	Aus 256, 827
425(T)	Aus 327, 742
426(T)	Aus 318
427(T)	Aus 53
428(T)	Aus 143, 144
429(T)	Aus 151
430(T)	Aus 767

NUMERICAL INDEX OF CHARTS AFFECTED

Edition No 11

Aus Chart	Notices
Aus 25	418
Aus 53	427(T)
Aus 57	419
Aus 59	419
Aus 60	419
Aus 143	428(T)
Aus 144	428(T)
Aus 151	429(T)
Aus 192	412
Aus 235	415
Aus 236	415, 421(T)
Aus 252	416
Aus 253	416
Aus 256	424(T)
Aus 265	423(T)
Aus 309	412
Aus 318	426(T)
Aus 327	425(T)
Aus 722	412
Aus 742	425(T)
Aus 767	430(T)
Aus 780	412
Aus 781	412
Aus 813	414
Aus 814	414, 422(T)
Aus 827	424(T)
Aus 830	420(T)
PNG 516	417
PNG 637	417

411 AUSTRALIA - Products - New Charts, New Editions, Withdrawn Charts

Australian Hydrographic Office , UKHO

New Charts

<i>Chart</i>	<i>Title and Geographical limits</i>	<i>Scale</i>	<i>Publication Date</i>	<i>Remarks</i>
NIL				

New Electronic Navigation Chart (Aus ENC)

<i>Cell Name</i>	<i>Title</i>	<i>Publication Date</i>	<i>Remarks</i>
NIL			

New Editions and Withdrawn Charts

<i>Chart</i>	<i>Title</i>	<i>Scale</i>	<i>Publication Date</i>	<i>Remarks</i>
NIL				

Admiralty publication

<i>NP No</i>	<i>Title</i>	<i>Date</i>	<i>Remarks</i>
NP44 & e-NP44	Admiralty Sailing Directions Malacca Strait and West Coast of Sumatera Pilot (Fifteenth Edition) 2022.	2/6/2022	The Fourteenth Edition 2019 of NP44 is cancelled.

Chart permanently withdrawn

Charts listed above as withdrawn no longer meet chart carriage requirements and should be marked as "superseded" and replaced with the new chart/ new edition listed prior to passage through the area covered by the new chart.

When placing orders with a chart agent between notice of forthcoming edition and its publication, mariners should advise whether their order pertains to the current edition or the new edition.

For further details refer to the AHO website at www.hydro.gov.au for new edition and new chart stock arrival information.

412 AUSTRALIA - Products - New Charts and New Editions to be published shortly

Australian Hydrographic Office

New Charts to be published shortly

Chart	Title	Scale	Remarks
NIL			

New Editions to be published shortly

Chart	Title	Scale	Remarks
Aus 192	Australia - East Coast - New South Wales - Twofold Bay Plan: East Boyd Bay Wharves Eden	1:25 000 1:7 500 1:7 500	New edition with general updating throughout; including latest bathymetric data.
Aus 309	Australia - North Coast - Darwin to Penguin Shoal (Eastern Sheet)	1:300 000	New edition with general updating throughout; including latest bathymetric data.
Aus 780	Australia - South Coast - South Australia - Althorpe Islands to Backstairs Passage	1:150 000	New edition with general updating throughout; including latest bathymetric data.
Aus 781	Australia - South Coast - South Australia - Gulf St Vincent	1:150 000	New edition with general updating throughout; including latest bathymetric data.

Charts to be withdrawn without replacement 10 June 2022

Chart	Title	Scale	Remarks
Aus 722 Edition 5	Australia - North Coast - Northern Territory - Beagle Gulf and Clarence Strait	1:150 000	19 February 2021

413 AUSTRALIA - AUSTIDES Edition 2 (V1.2.0.0)

Australian Hydrographic Office

Mariners are advised updated data set for AUSTIDES Edition 2 is available from AHO website "AusTides Data Updates" page. If you have installed AUSTIDES Edition 2 and your computer is connected to the internet upon launch, AusTides will auto check this web page for new updates published and automatically install them. Otherwise, manually download and install updates from this page.

The updated data set corrects a time zone error for Kai-Maituine Reef Northeast (57998) and includes all updates for ANTT 2022 published on Notices to Mariners up to Edition 10.

414 AUSTRALIA - QUEENSLAND - Fingal Head - Scientific instrument eastwards

Maritime Safety Queensland Notice 229/2022

Aus 813 [311/2022]

Move	light buoy	28° 13'.7 S	153° 41'.1 E
	to	28° 12'.77 S	153° 40'.83 E

Aus 814 [379/2022]

Move	light buoy	28° 13'.7 S	153° 41'.1 E
	to	28° 12'.77 S	153° 40'.83 E

415 AUSTRALIA - QUEENSLAND - Moreton Bay - West Channel - Topmark

Port of Brisbane Pty Ltd

Aus 235 [54/2022]

Delete topmark 27° 02'.3 S 153° 15'.5 E

Aus 236 [310/2022]

Delete topmark 27° 02'.3 S 153° 15'.5 E

416 AUSTRALIA - QUEENSLAND - Shute Harbour - Infrastructure

Whitsunday Regional Council

Aus 252 [225/2022]

Insert accompanying block 20° 17'.1 S 148° 47'.3 E

Aus 253 [225/2022]

Insert accompanying block 20° 17'.1 S 148° 47'.3 E

417 PAPUA NEW GUINEA - Trobriand Islands - Kiriwina Island - Losuia - Navais

National Maritime Safety Authority PNG

PNG 516 [NC 2/10/2020]Replace beacon with starboard lateral light beacon, *Fl.G.6s*, with topmark 8° 33'.3 S 151° 01'.7 E

Delete	beacon	8° 32'.9 S	151° 03'.7 E
	beacon	8° 33'.0 S	151° 03'.5 E
	beacon	8° 33'.1 S	151° 02'.8 E
	beacon	8° 33'.1 S	151° 02'.5 E

PNG 637 [NC 7/2/2020]

Insert accompanying block C 8° 33'.0 S 151° 03'.0 E

PNG 637 (Losuia) [NC 7/2/2020]

Insert	accompanying block B	8° 33'.06 S	151° 03'.88 E
	accompanying block A	8° 33'.15 S	151° 01'.86 E

418 AUSTRALIA - NORTHERN TERRITORY - Darwin - Middle Ground - Wreck; light buoys

Port of Darwin

Aus 25 [56/2022]

Insert accompanying block 12° 23'.6 S 130° 47'.1 E

419 AUSTRALIA - WESTERN AUSTRALIA - Dampier - Service Wharf to Hampton Harbour - Depths

Precision Hydrographic Services

Aus 57 [1054/2021]Replace depth, 2₄m, with depth, 1₄m, and extend contour SE to enclose 20° 39'.6 S 116° 41'.2 E**Aus 59 [239/2021]**Replace depth, 3₃m, with depth, 1₈m, and extend contour NE to enclose 20° 38'.37 S 116° 43'.82 E**Aus 60 [1054/2021]**Insert depth, 1₄m, enclosed by contour 20° 39'.572 S 116° 41'.212 EReplace depth, 3₃m, with depth, 1₈m, and extend contour NE to enclose 20° 38'.37 S 116° 43'.82 EDelete depth, 2₄m 20° 39'.58 S 116° 41'.19 E

420(T)/2022 AUSTRALIA - QUEENSLAND - Great Barrier Reef - Jenny Louise Shoal - Light buoy restored eastwards
Former Notice - 946(T)/2021 is cancelled
 Maritime Safety Queensland Notice 225/2022

Cancel this notice on receipt.

Chart formerly affected - Aus 830

421(T)/2022 AUSTRALIA - QUEENSLAND - Moreton Bay - Fison Channel - Light beacon unlit
 Maritime Safety Queensland Notice 234(T)/2022

The light beacon, *Q.Bu* (27° 31'.94 S 153° 17'.20 E), is unlit.

Chart temporarily affected - Aus 236

422(T)/2022 AUSTRALIA - QUEENSLAND - Palm Beach - Light buoy off station
 Maritime Safety Queensland Notice 220(T)/2022

The special light buoy, *Fl.Y.5s* (28° 06'.34 S 153° 28'.42 E), is off station.

Chart temporarily affected - Aus 814

423(T)/2022 AUSTRALIA - QUEENSLAND - Port Alma - Sea Reach - Light buoy unlit
 Maritime Safety Queensland Notice 226(T)/2022

The special light buoy, *Fl.Y.2·5s* (23° 30'.91 S 150° 56'.72 E), is unlit.

Chart temporarily affected - Aus 265

424(T)/2022 AUSTRALIA - QUEENSLAND - Rattlesnake Island - Live firing
 Maritime Safety Queensland Notice 201(T)/2022

Live firing activities will be conducted within a 5M radius of position 19° 02'.45 S 146° 36'.72 E during the period 2 June to 6 June 2022.

Mariners are advised to navigate with caution and keep well clear of the area.

Chart temporarily affected - Aus 256 - Aus 827

425(T)/2022 AUSTRALIA - WESTERN AUSTRALIA - Dampier Archipelago - Drill rig northwards
Former Notice - 401(T)/2022 is cancelled
 MODU *Valaris 107*

Drill rig *Valaris 107* is conducting drilling operations in position 20° 07'.58 S 116° 26'.13 E.

Chart temporarily affected - Aus 327 - Aus 742

426(T)/2022 AUSTRALIA - WESTERN AUSTRALIA - Joseph Bonaparte Gulf - Survey operations
 EOG Resources

On or about 1 June 2022, MV *Outer Limit*, with a 300m towed array, is conducting survey operations in an area bounded by the following positions:

14° 02'.15 S 128° 30'.70 E
 14° 05'.42 S 128° 34'.81 E
 14° 03'.09 S 128° 36'.58 E
 13° 59'.74 S 128° 32'.68 E.

Mariners are advised to navigate with caution in the area. 0.27NM clearance requested.

Chart temporarily affected - Aus 318

427(T)/2022 AUSTRALIA - WESTERN AUSTRALIA - Port Hedland - Scientific instruments
Pilbara Ports Authority Notice PH2(T)/2022

Special light buoys, Q.Y, exist in the following positions:

20° 17'.11 S 118° 35'.61 E

20° 17'.69 S 118° 34'.67 E

20° 18'.27 S 118° 31'.00 E.

A 50m exclusion zone exists around each of the buoys.

Mariners are advised to navigate with caution in the area.

Chart temporarily affected - Aus 53

428(T)/2022 AUSTRALIA - VICTORIA - Port Phillip - Observatory Point - Artificial reef
Subcon

An artificial reef exists in position 38° 17'.94 S 144° 40'.64 E.

Mariners are advised to navigate with caution in the area.

Chart temporarily affected - Aus 143 - Aus 144

429(T)/2022 AUSTRALIA - VICTORIA - Western Port - Watson Inlet - Beacon restored
Former Notice - 407(T)/2022 is cancelled
Parks Victoria Notice 189/2022

Cancel this notice on receipt.

Chart formerly affected - Aus 151

430(T)/2022 AUSTRALIA - TASMANIA - Bay of Fires - Beacon restored
Former Notice - 670(T)/2021 is cancelled
Marine and Safety Tasmania Notice M170/2022

Cancel this notice on receipt.

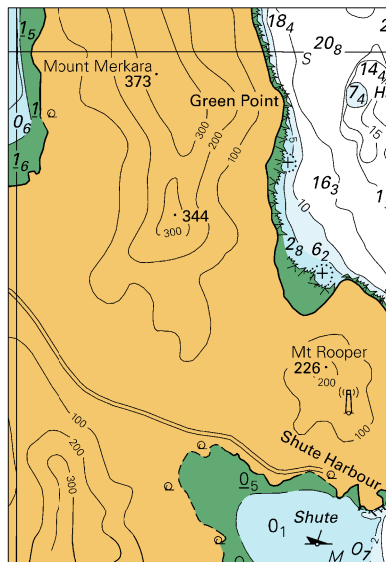
Chart formerly affected - Aus 767

II

HYDROGRAPHIC REPORTS

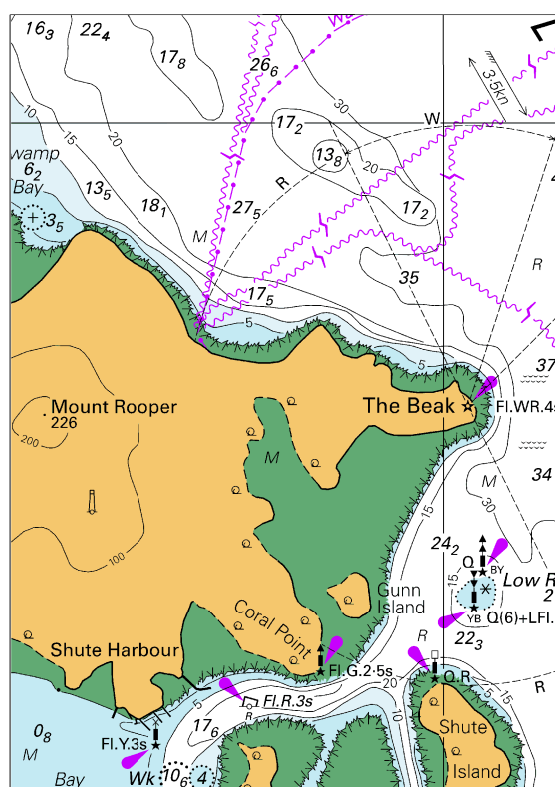
NIL

To accompany Australian Notice to Mariners 416/2022



Block for chart Aus 252 (50.6 x 73.7mm)
© Commonwealth of Australia 2022

To accompany Australian Notice to Mariners 416/2022

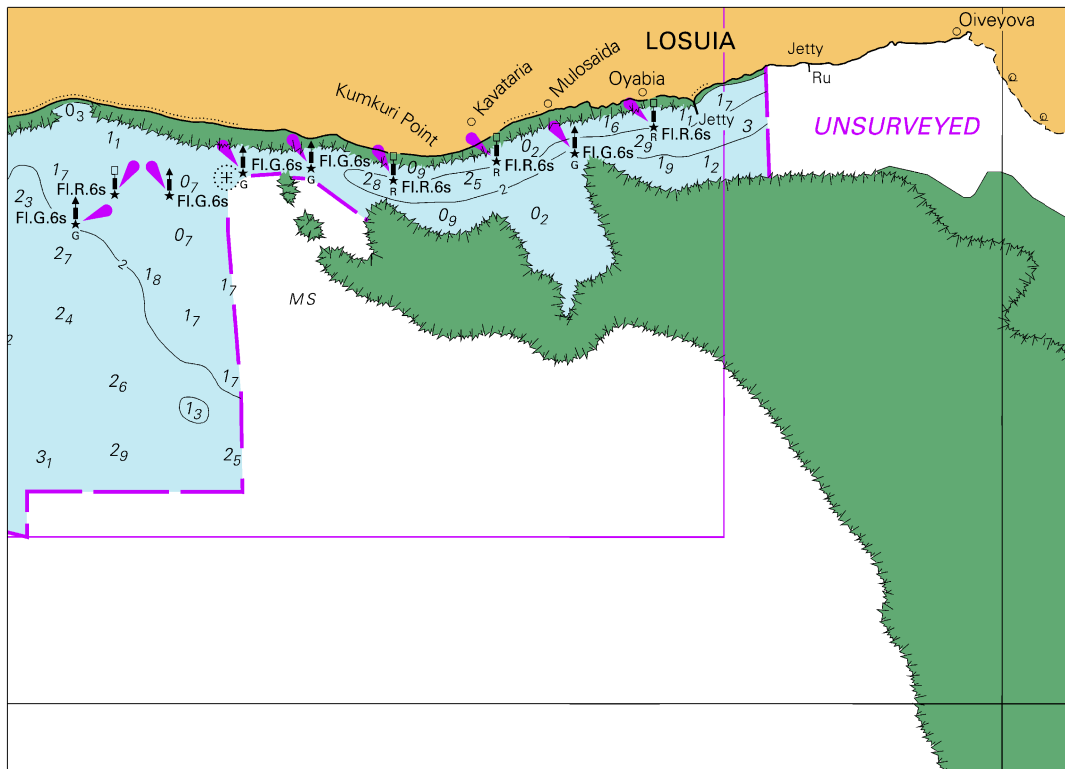


Block for chart Aus 253

(73.0 x 102.9mm)

© Commonwealth of Australia 2022

To accompany Australian Notice to Mariners 417/2022



Block C for chart PNG 637

© Commonwealth of Australia 2022

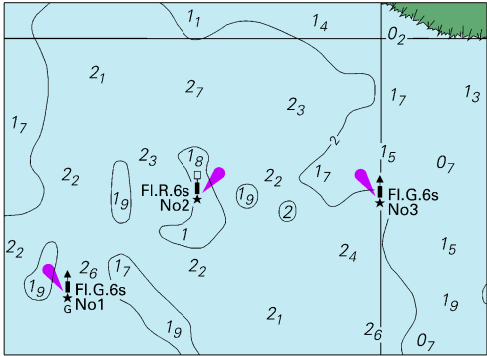
(140.0 x 101.1mm)

[illegible]

© Commonwealth of Australia 2022

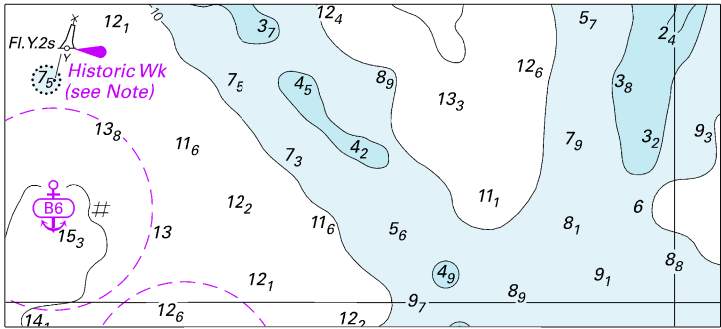
(209.1 × 50.6mm)

To accompany Australian Notice to Mariners 417/2022



Block A for chart PNG 637 (63.9 x 46.5mm)
© Commonwealth of Australia 2022

To accompany Australian Notice to Mariners 418/2022



Block for chart Aus 25

(94.6 x 42.6mm)

© Commonwealth of Australia 2022