



30 April 2021

Edition 9

# AUSTRALIAN NOTICES TO MARINERS

**Notices 354 - 418**

Published fortnightly by the Australian Hydrographic Office



Australian Notices to Mariners are the authority for correcting charts and publications published by the Australian Hydrographic Office covering Australia, Papua New Guinea, Solomon Islands, Australian Antarctic Territory and Timor-Leste.

Commodore S.T. DUNNE RAN  
*Hydrographer of Australia*

---

## SECTIONS.

- I. **Australian Notices to Mariners, including blocks and notes.**
- II. **Hydrographic Reports.**

## SUPPLEMENTS.

- I. **Tracings**
- II. **Cumulative List of Australian Notices to Mariners.**
- III. **Cumulative List of Temporary and Preliminary Australian Notices to Mariners.**
- IV. **Temporary and Preliminary Notices in force.**

---

© Commonwealth of Australia 2021

This work is copyright. Apart from any use permitted under the Copyright Act 1968, no part may be reproduced by any process, adapted, communicated or commercially exploited without prior written permission from The Commonwealth represented by the Australian Hydrographic Office.

## IMPORTANT NOTICE

This edition of Notices to Mariners includes all significant information affecting AHO products which the AHO has become aware of since the last edition. All reasonable efforts have been made to ensure the accuracy and completeness of the information, including third party information, on which these updates are based. The AHO regards third parties from which it receives information as reliable, however the AHO cannot verify all such information and errors may therefore exist. The AHO does not accept liability for errors in third party information.

---

## GENERAL INSTRUCTIONS

The substance of these notices should be inserted on the charts affected.

Bearings are referred to the true compass and are reckoned clockwise from North; those relating to lights are given as seen by an observer from seaward.

Positions quoted in notices relate to WGS84 which is the horizontal datum for all charts produced by the Australian Hydrographic Office.

The range quoted for a light is its nominal range.

Depths are with reference to the chart datum of each chart. Heights are above mean high water springs or mean higher high water, as appropriate.

The capital letter (P) or (T) after the number of any notice denotes a preliminary or temporary notice respectively, which are contained separately at the end of the permanent notices.

---

## REPORTING OF DANGERS

Mariners are particularly requested to notify the AUSTRALIAN HYDROGRAPHIC OFFICE, Locked Bag 8801 Wollongong, NSW 2500 (e-mail [datacentre@hydro.gov.au](mailto:datacentre@hydro.gov.au) or, alternatively by filling in and submitting the [Hydrographic Notes](#) forms located on the web site – [www.hydro.gov.au](http://www.hydro.gov.au)), immediately on the discovery of new dangers or suspected dangers to navigation. For changes or defects in aids to navigation notify AusSAR (Fax 02-6230 6868 or email [rccaus@amsa.gov.au](mailto:rccaus@amsa.gov.au)).

---

## AUTHORISED USE

Copies of Australian notices are available free of charge from the Australian Hydrographic Office (AHO) website ([www.hydro.gov.au](http://www.hydro.gov.au)) and through the eNotices (email) service ([www.hydro.gov.au/enotices/enotices.htm](http://www.hydro.gov.au/enotices/enotices.htm)).

Individual Notices may be copied for the purpose of inserting Notice substance on official charts and publications. Paper copies may be printed by chart agents and distributed to customers on a cost recovery basis. Participating chart agents are listed on the AHO website as providing a 'Paper Notices to Mariners' service ([www.hydro.gov.au/webapps/jsp/agents/agents-list.jsp](http://www.hydro.gov.au/webapps/jsp/agents/agents-list.jsp)). Copies of the notices may not be sold for profit without prior written agreement.

# NUMERICAL INDEX OF NOTICES TO MARINERS

## Edition No 9

Notices	Aus Chart, INT Chart, ENC Cell, AHP, BA Pubs
354	Aus 113, 153, 154, 270, 280, 281, 316, 724, 725, 833, 834
355	Aus 32, 69, 150, 169, 172, 174, 726
356	Amendment to Australian National Tide Tables 2021
357	Aus 198
358	Aus 255
359	Aus 237
360	Aus 830, 831, 832
361	PNG 389
362	Aus 309
363	Aus 901
364	Aus 112, 117
365	Aus 81
366	Aus 157
367	Aus 155
368(T)	Aus 807, 808
369(T)	Aus 255
370(T)	Aus 270
371(T)	Aus 270
372(T)	Aus 834
373(T)	Aus 281
374(T)	Aus 246
375(T)	Aus 241, 817
376(T)	Aus 241
377(T)	Aus 240
378(T)	Aus 6
379(T)	Aus 270, 280, 281, 833, 834
380(T)	Aus 236
381(T)	Aus 248, 260, 367, 490, 820, 822
382(T)	Aus 256, 827
383(T)	Aus 256
384(T)	Aus 4, 301
385(T)	Aus 614, 4602, 4604, 4621, INT 602, 604, 621
386(T)	Aus 26
387(T)	Aus 25, 26
388(T)	Aus 15
389(T)	Aus 312, 315, 4721, INT 721
390(T)	Aus 328
391(T)	Aus 328
392(T)	Aus 328
393(T)	Aus 328
394(T)	Aus 65, 327, 742, 743
395(T)	Aus 50, 323, 324
396(T)	Aus 57, 327, 742
397(T)	Aus 328, 744
398(T)	Aus 113
399(T)	Aus 112, 754
400(T)	Aus 112, 113, 754
401(T)	Aus 112, 117, 754
402(T)	Aus 112, 113, 117, 754
403(T)	Aus 81
404(T)	Aus 40, 41
405(T)	Aus 328, 329, 744
406(T)	Aus 328, 329, 744
407(T)	Aus 327
408(T)	Aus 112, 754, 4708, 4709, 4725, 4726, INT 708, 709, 725, 726
409(T)	Aus 157
410(T)	Aus 153
411(T)	Aus 157
412(T)	Aus 153
413(T)	Aus 157
414(T)	Aus 153, 157
415(T)	Aus 158
416(T)	Aus 140
417(T)	Aus 150, 151
418(T)	Aus 169



# NUMERICAL INDEX OF CHARTS AFFECTED

## Edition No 9

Aus Chart	Notices
Aus 4	384(T)
Aus 6	378(T)
Aus 15	388(T)
Aus 25	387(T)
Aus 26	386(T), 387(T)
Aus 32	355
Aus 40	404(T)
Aus 41	404(T)
Aus 50	395(T)
Aus 57	396(T)
Aus 65	394(T)
Aus 69	355
Aus 81	365, 403(T)
Aus 112	364, 399(T), 400(T), 401(T), 402(T), 408(T)
Aus 113	354, 398(T), 400(T), 402(T)
Aus 117	364, 401(T), 402(T)
Aus 140	416(T)
Aus 150	355, 417(T)
Aus 151	417(T)
Aus 153	354, 410(T), 412(T), 414(T)
Aus 154	354
Aus 155	367
Aus 157	366, 409(T), 411(T), 413(T), 414(T)
Aus 158	415(T)
Aus 169	355, 418(T)
Aus 172	355
Aus 174	355
Aus 198	357
Aus 236	380(T)
Aus 237	359
Aus 240	377(T)
Aus 241	375(T), 376(T)
Aus 246	374(T)
Aus 248	381(T)
Aus 255	358, 369(T)
Aus 256	382(T), 383(T)
Aus 260	381(T)
Aus 270	354, 370(T), 371(T), 379(T)
Aus 280	354, 379(T)
Aus 281	354, 373(T), 379(T)
Aus 301	384(T)
Aus 309	362
Aus 312	389(T)
Aus 315	389(T)
Aus 316	354
Aus 323	395(T)
Aus 324	395(T)
Aus 327	394(T), 396(T), 407(T)
Aus 328	390(T), 391(T), 392(T), 393(T), 397(T), 405(T), 406(T)
Aus 329	405(T), 406(T)
Aus 367	381(T)
Aus 490	381(T)
Aus 614	385(T)
Aus 724	354

Aus Chart	Notices
Aus 725	354
Aus 726	355
Aus 742	394(T), 396(T)
Aus 743	394(T)
Aus 744	397(T), 405(T), 406(T)
Aus 754	399(T), 400(T), 401(T), 402(T), 408(T)
Aus 807	368(T)
Aus 808	368(T)
Aus 817	375(T)
Aus 820	381(T)
Aus 822	381(T)
Aus 827	382(T)
Aus 830	360
Aus 831	360
Aus 832	360
Aus 833	354, 379(T)
Aus 834	354, 372(T), 379(T)
Aus 901	363
Aus 4602	385(T)
Aus 4604	385(T)
Aus 4621	385(T)
Aus 4708	408(T)
Aus 4709	408(T)
Aus 4721	389(T)
Aus 4725	408(T)
Aus 4726	408(T)
PNG 389	361

INT Chart	Notices
INT 602	385(T)
INT 604	385(T)
INT 621	385(T)
INT 708	408(T)
INT 709	408(T)
INT 721	389(T)
INT 725	408(T)
INT 726	408(T)

**354 AUSTRALIA - Products - New Charts, New Editions, Withdrawn Charts**

Australian Hydrographic Office

**New Charts**

<i>Chart</i>	<i>Title and Geographical limits</i>	<i>Scale</i>	<i>Publication Date</i>	<i>Remarks</i>
NIL				

**New Electronic Navigation Chart (Aus ENC)**

<i>Cell Name</i>	<i>Title</i>	<i>Scale</i>	<i>Publication Date</i>	<i>Remarks</i>
AU5BWB01	Western Australia - Barrow Island - Town Point		29 April 2021	AU5066P0 has been withdrawn.
AU5BWB02	Western Australia - Barrow Island - Wapet Landing		29 April 2021	AU5067P0 has been withdrawn.
AU5ASB01	Western Australia - North West Shelf - Port of Ashburton		22 April 2021	AU5069P2 has been withdrawn.
PG407146	Papua New Guinea - North East Coast - Schneider Point to Lae		29 April 2021	AU407146 has been withdrawn.
PG407147	Papua New Guinea - North East Coast - Lae to Vitiaz Strait		29 April 2021	AU407147 has been withdrawn.
PG407149	Papua New Guinea - New Britain - Arawe Harbour to Aivet Island		29 April 2021	AU407149 has been withdrawn.

**New Editions and Withdrawn Charts**

<i>Chart</i>	<i>Title</i>	<i>Scale</i>	<i>Publication Date</i>	<i>Remarks</i>
Aus 316 (Edition 4)	Australia - North Coast - Northern Territory - Charles Point to Pelican Island	1:300 000	30 April 2021	New edition with general updating throughout. <b>Chart Aus 316 Edition 3 dated 25 September 2015 is now superseded and must be withdrawn from use.</b>
Aus 833 (Edition 4)	Australia - East Coast - Queensland - Barrow Point to Claremont Isles	1:150 000	30 April 2021	New edition with general updating throughout; including latest bathymetric data. <b>Chart Aus 833 Edition 3 dated 29 August 2014 is now superseded and must be withdrawn from use.</b>
Aus 834 (Edition 8)	Australia - East Coast - Queensland - Claremont Isles to Cape Weymouth	1:150 000	30 April 2021	New edition with general updating throughout; including latest bathymetric data. <b>Chart Aus 834 Edition 7 dated 23 October 2015 is now superseded and must be withdrawn from use.</b>

**354 AUSTRALIA - Products - New Charts, New Editions, Withdrawn Charts**
**Charts withdrawn without replacement**

<i>Chart</i>	<i>Title</i>	<i>Scale</i>	<i>Publication Date</i>
Aus 113 <b>Edition 8</b>	Australia - West Coast - Western Australia - Fremantle	1:7 500	27 January 2017
Aus 153 <b>Edition 2</b>	Australia - South Coast - Victoria - Port of Geelong	1:7 500	17 July 2015
Aus 154 <b>Edition 10</b>	Australia - South Coast - Victoria - Melbourne - Williamstown and Yarra Rivers Inset: Yarra River	1:7 500  1:7 500	19 May 2017
Aus 270 <b>Edition 4</b>	Australia - East Coast - Queensland - Plans in Queensland (Sheet 2) Plans: Cape Melville and Pipon Islets Approaches to Heath Reef Howick Group Cape Flattery Wharf Cooktown Port Douglas	  1:75 000 1:50 000 1:50 000 1:10 000 1:10 000 1:10 000	22 February 2019
Aus 280 <b>Edition 5</b>	Australia - East Coast - Queensland - Plans in Queensland (Sheet 3) Plans: Magpie Reef to Eden Reef Flinders Group	  1:75 000 1:50 000	22 February 2019
Aus 281 <b>Edition 3</b>	Australia - East Coast - Queensland - First Three Mile Opening to Cape Direction	1:75 000	22 February 2019
Aus 724 <b>Edition 2</b>	Australia - North Coast - Northern Territory - Fog Bay to Port Keats	1:150 000	13 June 2003
Aus 725 <b>Edition 2</b>	Australia - North Coast - Northern Territory - Port Keats to Victoria River	1:150 000	21 March 2003

**Chart permanently withdrawn**

Charts listed above as withdrawn no longer meet chart carriage requirements and should be marked as "superseded" and replaced with the new chart/ new edition listed prior to passage through the area covered by the new chart.

When placing orders with a chart agent between notice of forthcoming edition and its publication, mariners should advise whether their order pertains to the current edition or the new edition.

For further details refer to the AHO website at [www.hydro.gov.au](http://www.hydro.gov.au) for new edition and new chart stock arrival information.

**355 AUSTRALIA - Products - New Charts and New Editions to be published shortly**

Australian Hydrographic Office

**New Charts to be published shortly**

<i>Chart</i>	<i>Title</i>	<i>Scale</i>	<i>Remarks</i>
NIL			

**New Editions to be published shortly**

<i>Chart</i>	<i>Title</i>	<i>Scale</i>	<i>Remarks</i>
NIL			

**Charts to be withdrawn without replacement 14 May 2021**

<i>Chart</i>	<i>Title</i>	<i>Scale</i>	<i>Publication Date</i>
Aus 32	Australia - North Coast - Western Australia - Cambridge Gulf	1:75 000	19 April 2019
<b>Edition 4</b>	Plans:		
	Wyndham Wharf	1:7 500	
	Approaches to Wyndham Wharf	1:37 500	
Aus 150	Australia - South Coast - Victoria - Western Port	1:75 000	4 June 2010
<b>Edition 2</b>	Plans:		
	Eastern Entrance to Western Port	1:37 500	
	The Narrows	1:10 000	
	Rhyll	1:10 000	
Aus 169	Australia - Tasmania - Plans in Tasmania (Sheet 3)		21 January 2005
<b>Edition 1</b>	Plans:		
	Coles Bay	1:15 000	
	Blackman Bay	1:25 000	
	Georges Bay	1:25 000	
	Schouten Passage	1:75 000	
Aus 172	Australia - Tasmania - Port of Hobart	1:10 000	2 September 2005
<b>Edition 1</b>	Plans:		
	Sullivans Cove	1:5 000	
	Bowen Bridge	1:10 000	
Aus 174	Australia - Tasmania - Plans in Tasmania (Sheet 4)		6 June 2008
<b>Edition 1</b>	Plans:		
	Port Huon	1:12 500	
	North West Bay	1:25 000	
	Port Arthur	1:25 000	
	Recherche Bay	1:25 000	
	Southport	1:25 000	
Aus 726	Australia - North Coast - Western Australia - Approaches to Cambridge Gulf	1:150 000	18 April 2003
<b>Edition 4</b>			

**Charts to be withdrawn without replacement 28 May 2021**

<i>Chart</i>	<i>Title</i>	<i>Scale</i>	<i>Publication Date</i>
Aus 69	Australia - North West Coast - Western Australia - Plans of Port of Ashburton and Onslow		18 December 2015
<b>Edition 1</b>	Plans:		
	Port of Ashburton	1:10 000	
	Onslow	1:12 500	



**356 AUSTRALIA - Product - Amendment to Australian National Tide Tables 2021**  
Australian Hydrographic Office

**ANTT 2021**

Page 324 <i>Amend</i>	MUMFORD ISLAND To Chart Datum -0.3 to UNK
Page 353 <i>Amend</i>	BUNBURY To Chart Datum AUS 115 NE 19 MAR 2021 ADD 0.1 CARNAVON To Chart Datum AUS 331 NE 16 APR 2021 0.0
Page 354 <i>Amend</i>	DENHAM To Chart Datum AUS 331 NE 16 APR 2021 0.0
Page 355 <i>Amend</i>	FREMANTLE Correction to Chart Datum ENC AU5113P0 to AU5FRE01
Page 358 <i>Amend</i>	PORT ADELAIDE (OUTER HARBOR) To Chart Datum AUS 130 NE 02 APR 2021 0.0
<i>Delete</i>	PORT ADELAIDE (OUTER HARBOR) To Chart Datum AUS 137 NE 23 MAY 2008 0.0 PORT ADELAIDE (OUTER HARBOR) To Chart Datum AUS 138 NC 23 NOV 2007 0.0 PORT LINCOLN To Chart Datum AUS 133 NC 16 DEC 2011 0.0
Page 359 <i>Amend</i>	PORT PIRIE To Chart Datum AUS 136 NE 19 MAR 2021 0.0
Page 361 <i>Amend</i>	WHYALLA To Chart Datum AUS 136 NE 19 MAR 2021 0.0
<i>Delete</i>	WHYALLA To Chart Datum AUS 135 NE 13 JUL 2018 0.0 WALLAROO To Chart Datum AUS 133 NC 16 DEC 2011 0.0

**357 AUSTRALIA - NEW SOUTH WALES - Botany Bay - Lights**  
Port Authority of New South Wales

<b>Aus 198</b> [741/2020]			
<i>Amend</i>	light to <i>F.26m</i>	33° 57'.18 S	151° 11'.72 E
	light to <i>F.26m</i>	33° 57'.21 S	151° 11'.77 E
	light to <i>F.19m</i>	33° 57'.31 S	151° 11'.76 E
	light to <i>F.19m</i>	33° 57'.34 S	151° 11'.80 E

**358 AUSTRALIA - QUEENSLAND - Abbot Point - Virtual AIS**  
Maritime Safety Queensland Notice 123(T)/2021

<b>Aus 255</b> [230/2021]			
<i>Move</i>	port lateral virtual AIS	19° 50'.83 S	148° 05'.98 E
	to	19° 50'.883 S	148° 05'.983 E

**359 AUSTRALIA - QUEENSLAND - Brisbane River - Pelican Banks Reach - Obstruction**  
Maritime Safety Queensland Notice 147/2021

<b>Aus 237</b> [311/2021]			
<i>Insert</i>	depth, 9 <i>m</i> , enclosed by danger circle with legend, <i>Obstr</i>	27° 23'.707 S	153° 09'.300 E

**360 AUSTRALIA - QUEENSLAND - Port Douglas to Howick Group - Chart withdrawn; chart limits; chart note; legends; ZOC diagram**

Australian Hydrographic Office

*Note:* position of existing chart notes may vary on certain charts.

**Aus 830 [233/2021]**

Insert	accompanying block	16° 28'.5 S	145° 28'.6 E
	accompanying chart note, ELECTRONIC NAVIGATIONAL CHART (ENC)	16° 51'.0 S	145° 34'.0 E
Delete	magenta limits with legend, Aus 270, centred on	17° 07'.4 S	145° 24'.9 E

**Aus 831 [474/2020]**

Insert	magenta legend, <i>ENC (see Note)</i> , centred on	14° 58'.2 S	145° 23'.4 E
	accompanying block	15° 28'.2 S	145° 16'.3 E
	accompanying chart note, ELECTRONIC NAVIGATIONAL CHART (ENC)	16° 19'.0 S	145° 12'.0 E
Amend	bearing to 217°	14° 57'.8 S	145° 22'.1 E
Delete	magenta limits with legend, Aus 270, centred on chart note, OMISSIONS FROM CHART	14° 59'.0 S	145° 21'.5 E
		16° 08'.0 S	145° 12'.0 E

**Aus 832 [770/2019]**

Insert	magenta legend, <i>ENC (see Note)</i> , centred on	14° 30'.5 S	144° 53'.5 E
	accompanying ZOC diagram	14° 57'.0 S	144° 52'.0 E
	magenta legend, <i>ENC (see Note)</i> , centred on	14° 58'.2 S	145° 23'.4 E
	accompanying chart note, ELECTRONIC NAVIGATIONAL CHART (ENC)	15° 11'.5 S	144° 36'.0 E
Replace	depth, 9 <sub>4</sub> m, with depth, 9 <sub>2</sub> m	14° 27'.7 S	144° 46'.8 E
Amend	bearing to 217°	14° 57'.8 S	145° 22'.1 E
Delete	magenta limits with legend, Aus 270, centred on magenta limits with legend, Aus 270, centred on chart note, OMISSIONS FROM CHART	14° 30'.0 S	144° 54'.0 E
		14° 59'.0 S	145° 21'.5 E
		15° 00'.3 S	144° 36'.5 E

**361 PAPUA NEW GUINEA - Bougainville Bay - Light**

National Maritime Safety Authority PNG

**PNG 389 [NC 11/12/2020]**

Amend	light to <i>Fl.10s 10M</i>	2° 36'.4 S	141° 00'.1 E
-------	----------------------------	------------	--------------

**362 AUSTRALIA - NORTHERN TERRITORY - Cape Grose - Chart limits**

Australian Hydrographic Office

**Aus 309 [6/2021]**

Delete	magenta limits with legend, Aus 724, centred on	11° 38'.2 S	130° 55'.0 E
	magenta limits with legend, Aus 724, centred on	12° 34'.0 S	129° 59'.0 E

**363 TIMOR-LESTE - Dili - Depth**

Australian Hydrographic Office

**Aus 901 [NE 30/6/2017]**

Insert	depth, 17 <sub>4</sub> m, enclosed by contour	8° 32'.619 S	125° 35'.368 E
--------	---	--------------	----------------

### 364 AUSTRALIA - WESTERN AUSTRALIA - Fremantle - Chart withdrawn; chart limits; chart notes; legends; berths; port limit; ZOC diagram

Australian Hydrographic Office

Note: position of existing chart notes may vary on certain charts.

#### Aus 112 [993/2020]

Insert	accompanying chart note, ELECTRONIC NAVIGATIONAL CHART (ENC)	31° 57'.0 S	115° 48'.5 E
	accompanying chart note, INNER HARBOUR - TIDAL STREAMS	31° 57'.3 S	115° 47'.1 E
	accompanying chart note, DREDGED AREAS	31° 58'.2 S	115° 47'.1 E
	accompanying ZOC diagram	32° 02'.8 S	115° 48'.5 E
	accompanying block	32° 03'.0 S	115° 43'.5 E

#### Aus 117 [98/2021]

Insert	accompanying ZOC diagram	32° 15'.5 S	115° 46'.0 E
Replace	chart note, OMISSIONS FROM CHART, with accompanying chart note, DREDGED AREAS	32° 11'.3 S	115° 37'.5 E
Amend	legend to 2F.R ≠ 040.5°	32° 03'.2 S	115° 44'.3 E
Delete	magenta limits with legend, Aus 113, centred on	32° 03'.7 S	115° 43'.5 E

### 365 AUSTRALIA - WESTERN AUSTRALIA - Geraldton - Light buoys

Mid West Ports

#### Aus 81 [274/2021]

Amend	light buoy to Oc.R.5s NC2	28° 42'.69 S	114° 34'.48 E
	light buoy to Oc.G.5s NC1	28° 43'.13 S	114° 34'.65 E
	light buoy to Fl(4)G.10s NC3	28° 43'.44 S	114° 35'.32 E
	light buoy to Fl(2)R.5s NC6	28° 44'.06 S	114° 35'.67 E
	light buoy to Fl(2)G.5s NC5	28° 44'.09 S	114° 35'.52 E
	light buoy to Fl(2)R.5s NC8	28° 44'.66 S	114° 35'.81 E
	light buoy to Fl(2)G.5s NC7	28° 44'.69 S	114° 35'.67 E

### 366 AUSTRALIA - VICTORIA - Geelong - Chart withdrawn; chart limits; chart notes; legends; depths; ZOC diagram

Australian Hydrographic Office

Note: position of existing chart notes may vary on certain charts.

#### Aus 157 [321/2021]

Insert	contour, between	38° 05'.198 S	144° 23'.424 E
		38° 05'.280 S	144° 23'.280 E
	magenta legend, ENC (see Note), centred on	38° 04'.4 S	144° 40'.8 E
	maintained depth, 12.3m	38° 06'.44 S	144° 22'.30 E
	dredged depth, 9.0m	38° 06'.84 S	144° 21'.89 E
	magenta legend, ENC (see Note), centred on	38° 07'.0 S	144° 24'.0 E
	magenta legend, ENC (see Note), centred on	38° 09'.1 S	144° 33'.2 E
	accompanying ZOC diagram	38° 10'.3 S	144° 36'.0 E
	accompanying chart note, ELECTRONIC NAVIGATIONAL CHART (ENC)	38° 11'.7 S	144° 40'.7 E
Delete	contour, between	38° 05'.20 S	144° 23'.42 E
		38° 05'.16 S	144° 23'.30 E
		38° 05'.25 S	144° 23'.25 E
	magenta limits with legend, Aus 153, centred on	38° 06'.5 S	144° 23'.0 E
	magenta limits with legend, see Plan, centred on	38° 07'.4 S	144° 26'.7 E
	magenta limits with legend, see Plan, centred on	38° 09'.3 S	144° 33'.3 E
	chart note, OMISSIONS FROM CHART	38° 10'.7 S	144° 39'.2 E

#### Aus 157 (Point Henry Pier) [321/2021]

Delete	plan, POINT HENRY PIER	38° 07'.5 S	144° 26'.7 E
--------	------------------------	-------------	--------------

#### Aus 157 (Clifton Springs) [321/2021]

Delete	plan, CLIFTON SPRINGS	38° 09'.3 S	144° 33'.2 E
--------	-----------------------	-------------	--------------

**367 AUSTRALIA - VICTORIA - Port Phillip - Williamstown and Yarra River - Chart withdrawn; chart limits; chart notes; legends; depth; light; radio reporting point; ZOC diagram**

Australian Hydrographic Office

*Note:* position of existing chart notes may vary on certain charts.

**Aus 155 [101/2021]**

Insert	light, VQ.WRG. 10m 5M	37° 50'.842 S	144° 54'.323 E
	a dashed line in a direction 144·5° for a distance of 700m, thence a continuous line for 2770m, with legend <i>Dir 324·5°</i> , emanating from light maintained depth, 10·9m	37° 50'.842 S	144° 54'.323 E
	accompanying ZOC diagram	37° 50'.9 S	144° 55'.6 E
	two-way radio reporting point, orient 144·5° - 324·5°	37° 51'.0 S	145° 00'.5 E
	two-way radio reporting point, orient 001·5° - 181·5°	37° 51'.810 S	144° 55'.169 E
	magenta legend, <i>ENC (see Note)</i> , centred on	37° 52'.070 S	144° 55'.710 E
	magenta legend, <i>ENC (see Note)</i> , centred on	37° 52'.1 S	144° 57'.2 E
	magenta legend, <i>ENC (see Note)</i> , centred on	37° 52'.3 S	144° 51'.2 E
	accompanying chart note, ELECTRONIC NAVIGATIONAL CHART (ENC)	37° 54'.5 S	144° 58'.0 E
	magenta legend, <i>ENC (see Note)</i> , centred on	37° 55'.0 S	144° 45'.5 E
	magenta legend, <i>ENC (see Note)</i> , centred on	37° 56'.7 S	144° 58'.8 E
	magenta legend, <i>ENC (see Note)</i> , centred on	37° 58'.3 S	144° 55'.4 E
Delete	magenta limits with legend, Aus 154, centred on	37° 51'.5 S	144° 55'.5 E
	magenta limits with legend, see Plan, centred on	37° 51'.6 S	144° 57'.8 E
	magenta limits with legend, see Plan, centred on	37° 52'.1 S	144° 51'.1 E
	chart note, OMISSIONS FROM CHART	37° 52'.5 S	144° 45'.5 E
	magenta limits with legend, see Plan, centred on	37° 54'.4 S	144° 58'.7 E
	magenta limits with legend, see Plan, centred on	37° 56'.6 S	144° 59'.5 E
<b>Aus 155 (Sandringham) [101/2021]</b>			
Delete	plan, SANDRINGHAM	37° 56'.6 S	144° 59'.5 E
<b>Aus 155 (Brighton) [101/2021]</b>			
Delete	plan, BRIGHTON	37° 54'.4 S	144° 58'.7 E
<b>Aus 155 (Altona) [101/2021]</b>			
Delete	plan, ALTONA	37° 52'.1 S	144° 51'.1 E
<b>Aus 155 (St Kilda) [101/2021]</b>			
Delete	plan, ST KILDA	37° 51'.6 S	144° 57'.8 E

**368(T)/2021 AUSTRALIA - NEW SOUTH WALES - Jervis Bay - Military exercise**

Department of Defence

Military exercises will be conducted within a 2M radius of position 35° 07'.26 S 150° 42'.36 E from 27 April to 28 May 2021.

Activities will include surface and subsurface equipment, personnel and divers requiring safe operational area during the period. Military support craft and other surface vessels will be in support of the activities.

Merchant traffic may be invited to alter course to facilitate naval training manoeuvres. Vessels transiting proximate to the area during the activities period are advised to navigate with caution, monitor VHF Channel 16, and ensure their vessel's Automatic Identification System (AIS) is activated.

Vessels are advised to avoid the following areas where activities may be concentrated during the stated period and advised to navigate with caution in the area.

Maritime industry enquiries related to this Military Training and Assessment Activities should be directed to RAN Maritime Trade Operations via phone +61 (0) 431764980 or email MTO.OPSO@defence.gov.au.

**Chart temporarily affected - Aus 807 - Aus 808****369(T)/2021 AUSTRALIA - QUEENSLAND - Abbot Point - Virtual AIS**

Maritime Safety Queensland Notice 123(T)/2021

Virtual AIS exist as follows:

<i>Position</i>	<i>Remarks</i>
19° 50'.57 S 148° 05'.31 E	starboard lateral AIS
19° 51'.21 S 148° 05'.12 E	starboard lateral AIS
19° 51'.11 S 148° 05'.81 E	port lateral AIS
19° 51'.36 S 148° 05'.66 E	port lateral AIS.

**Chart temporarily affected - Aus 255****370(T)/2021 AUSTRALIA - QUEENSLAND - Cape Flattery - Shoaling charted***Former Notice* - 708(T)/2017 is cancelled

Maritime Safety Queensland

Cancel this notice on receipt.

**Chart formerly affected - Aus 270****371(T)/2021 AUSTRALIA - QUEENSLAND - Cooktown - Chart withdrawn***Former Notice* - 926(T)/2016 is cancelled

Maritime Safety Queensland Notice 363/2016

Cancel this notice on receipt.

**Chart formerly affected - Aus 270****372(T)/2021 AUSTRALIA - QUEENSLAND - First Three Mile Opening - Light unreliable**

Australian Maritime Safety Authority

The light, *Fl.5s 14m 10M* (13° 26'.21 S 143° 58'.15 E), is unreliable.

**Chart temporarily affected - Aus 834****373(T)/2021 AUSTRALIA - QUEENSLAND - First Three Mile Opening - Light unreliable***Former Notice* - 28(T)/2018 is cancelled

Australian Maritime Safety Authority

Cancel this notice on receipt.

**Chart formerly affected - Aus 281**

**374(T)/2021 AUSTRALIA - QUEENSLAND - Gladstone - South Channel - Wild Cattle Cutting - Light beacon altered; light buoy**

Former Notice - 158(T)/2020 is cancelled

Maritime Safety Queensland Notice 45(T)/2020, 134(T)/2021

The light beacon, *Fl.R.4s S10* (23° 55'.68 S 151° 28'.81 E), has been temporarily altered to *Fl.Y.3s*.

A port lateral buoy, *Fl.R.4s*, exists in position 23° 55'.66 S 151° 28'.84 E.

**Chart temporarily affected - Aus 246**

**375(T)/2021 AUSTRALIA - QUEENSLAND - Great Sandy Strait - Light buoys**

Former Notice - 372(T)/2017 is cancelled

Maritime Safety Queensland Notice 61(T)/2016, 146/2017, 145(T)/2021

Light buoys exist as follows:

Number	Position	Characteristics
UC1	25° 09'.10 S 152° 50'.54 E	<i>Fl.G.2·5s</i>
S3	25° 12'.70 S 152° 54'.75 E	<i>Fl.G.2·5s</i>
NG1	25° 20'.20 S 153° 01'.40 E	<i>Fl.G.2·5s</i>

**Chart temporarily affected - Aus 241 - Aus 817**

**376(T)/2021 AUSTRALIA - QUEENSLAND - Great Sandy Strait - Mary River - Beaver Rock - Light buoy**

Maritime Safety Queensland Notice 130(T)/2021

A port lateral light buoy, *Fl.R.3s*, exists in position 25° 29'.56 S 152° 51'.01 E.

**Chart temporarily affected - Aus 241**

**377(T)/2021 AUSTRALIA - QUEENSLAND - Great Sandy Strait - Tooth Island - Light beacon destroyed**

Maritime Safety Queensland Notice 150(T)/2021

The light beacon, *Fl.G.2·5s* (25° 33'.11 S 152° 55'.42 E), has been destroyed.

**Chart temporarily affected - Aus 240**

**378(T)/2021 AUSTRALIA - QUEENSLAND - Karumba - Shoaling**

Former Notice - 819(T)/2020 is cancelled

Maritime Safety Queensland Notice 141/2021

Shoaling exists in the entrance channel between beacon No8 (17° 26'.36 S 140° 44'.73 E) and beacon No10 (17° 26'.65 S 140° 45'.32 E).

Mariners should not navigate along the charted recommended track between beacons No8 and No10 and instead should navigate between the Elbow Bank special light buoys, *Fl.Y.2·5s*, to follow the change in channel position.

Mariners are advised to navigate with caution in the area.

**Chart temporarily affected - Aus 6**

**379(T)/2021 AUSTRALIA - QUEENSLAND - LADS Passage - Shoaling charted**

Former Notice - 872(P)/2017 is cancelled

LADS Flight

Cancel this notice on receipt.

**Chart formerly affected - Aus 270 - Aus 280 - Aus 281 - Aus 833 - Aus 834**

**380(T)/2021 AUSTRALIA - QUEENSLAND - North Stradbroke Island - Polka Point - Obstruction**  
Maritime Safety Queensland Notice 142(T)/2021

An obstruction exists in position 27° 29'.52 S 153° 24'.09 E.

Mariners are advised to pass north of the obstruction and to navigate with caution in the area.

**Chart temporarily affected - Aus 236**

**381(T)/2021 AUSTRALIA - QUEENSLAND - Shoalwater Bay - Live firing completed**

*Former Notice - 333(T)/2021 is cancelled*

Maritime Safety Queensland Notice 110(T)/2021, 111(T)/2021

Cancel this notice on receipt.

**Chart formerly affected - Aus 248 - Aus 260 - Aus 367 - Aus 490 - Aus 820 - Aus 822**

**382(T)/2021 AUSTRALIA - QUEENSLAND - Townsville - Dredging operations completed**

*Former Notice - 282(T)/2021 is cancelled*

Maritime Safety Queensland Notice 106(T)/2021, 137(T)/2021

Cancel this notice on receipt.

**Chart formerly affected - Aus 256 - Aus 827**

**383(T)/2021 AUSTRALIA - QUEENSLAND - Townsville - Navaid re-alignment works; virtual AIS; light**

*Former Notice - 335(T)/2021 is cancelled*

Maritime Safety Queensland Notice 122(T)/2021, 125(T)/2021, 144(T)/2021

Barge *PMG181* and support vessels are conducting works to re-align nav aids in the channel as part of the Townsville Port Expansion Project.

Light beacons will be temporarily withdrawn and virtual AIS have been established at the following light beacons:

19° 10'.46 S 146° 52'.53 E  
19° 11'.25 S 146° 52'.21 E  
19° 11'.73 S 146° 51'.84 E  
19° 12'.20 S 146° 51'.54 E  
19° 12'.66 S 146° 51'.24 E  
19° 13'.12 S 146° 50'.95 E  
19° 13'.58 S 146° 50'.65 E  
19° 14'.05 S 146° 50'.35 E  
19° 14'.58 S 146° 50'.03 E.

A light, Q, exists in position 19° 14'.66 S 146° 49'.97 E.

Mariners are advised to navigate with caution in the area.

**Chart temporarily affected - Aus 256**

**384(T)/2021 AUSTRALIA - QUEENSLAND - Weipa - Dredging operations**

Maritime Safety Queensland Notice 137(T)/2021

The dredge *Brisbane*, bed levelling vessel *Pacific Titan* and survey vessel *Christopher B* are conducting dredging, bed levelling and survey operations in the Port of Weipa (12° 40'.70 S 141° 47'.00 E) and Amrun (12° 55'.36 S 141° 36'.53 E).

Vessels will monitor VHF Ch 12 and Ch 16.

Mariners are advised to navigate with caution in the area.

**Chart temporarily affected - Aus 4 - Aus 301**

**385(T)/2021 AUSTRALIA - CORAL SEA - Lihou Reef - Light unlit**

Australian Maritime Safety Authority NAVAREA X 44/2021

The light, *Fl. 10s 33m 19M* (17° 07'.75 S 152° 08'.47 E), is unlit.

**Chart temporarily affected - Aus 614 - Aus 4602 (INT 602) - Aus 4604 (INT 604) - Aus 4621 (INT 621)**

**386(T)/2021 AUSTRALIA - NORTHERN TERRITORY - Darwin - South Shell Island - Scientific instrument recovered**

*Former Notice* - 209(T)/2021 is cancelled

Department of Infrastructure, Planning and Logistics NT

Cancel this notice on receipt.

**Chart formerly affected - Aus 26**

**387(T)/2021 AUSTRALIA - NORTHERN TERRITORY - Darwin - Fort Point - Harbour works completed**

*Former Notice* - 205(T)/2021 is cancelled

Northern Territory Government

Cancel this notice on receipt.

**Chart formerly affected - Aus 25 - Aus 26**

**388(T)/2021 AUSTRALIA - NORTHERN TERRITORY - Gove Harbour - Light buoy off station**

Rio Tinto

The starboard lateral light buoy, *Fl. G. 4s* (12° 11'.78 S 136° 41'.20 E), is off station.

**Chart temporarily affected - Aus 15**

**389(T)/2021 AUSTRALIA - TIMOR SEA - Van Cloon Shoal - Subsea operations northwards**

Gulf Agency Company (Australia)

On or about 5 May 2021, vessel *CS Reliance* and a ROV will be conducting cable repair operations in an area bounded by the following positions:

11° 32'.30 S 126° 28'.29 E

11° 30'.74 S 126° 26'.77 E

11° 19'.18 S 126° 38'.16 E

11° 20'.59 S 126° 39'.81 E.

Mariners are advised to navigate with caution in the area.

**Chart temporarily affected - Aus 312 - Aus 315 - Aus 4721 (INT 721)**

**390(T)/2021 AUSTRALIA - WESTERN AUSTRALIA - Barrow Island - Scientific instruments northwestwards**

Technip FMC

Special spherical light buoys, *Fl(5)Y. 20s*, exist in positions 19° 55'.21 S 114° 27'.21 E and 20° 29'.00 S 114° 48'.97 E.

**Chart temporarily affected - Aus 328**

**391(T)/2021 AUSTRALIA - WESTERN AUSTRALIA - Barrow Island - Subsea operations northwestwards**

Chevron Australia

On or about 4 May 2021, Vessel *Skandi Hercules* and a ROV will be conducting subsea operations in the vicinity of positions 19° 51'.17 S 114° 30'.91 E, 20° 24'.48 S 114° 50'.96 E and 20° 34'.63 S 114° 46'.62 E.

Mariners are advised to navigate with caution in the area.

**Chart temporarily affected - Aus 328**



**392(T)/2021 AUSTRALIA - WESTERN AUSTRALIA - Barrow Island - Mooring buoys northwestwards recovered**

*Former Notice* - 36(T)/2020 is cancelled  
Deep Sea Mooring

Cancel this notice on receipt.

**Chart formerly affected - Aus 328**

**393(T)/2021 AUSTRALIA - WESTERN AUSTRALIA - Barrow Island - Mooring buoys northwestwards recovered**

*Former Notice* - 495(T)/2020 is cancelled  
Deep Sea Mooring

Cancel this notice on receipt.

**Chart formerly affected - Aus 328**

**394(T)/2021 AUSTRALIA - WESTERN AUSTRALIA - Barrow Island - Maintenance operations**

Chevron Australia Notice 1/2021

On or about 3 May 2021, vessels *CMV Athos*, *Bhagwan Abrolhos* and *Adrenalin Sprint* will be conducting maintenance operations on the CBM Tanker Mooring within a 1M radius of position 20° 48'.8 S 115° 33'.2 E.

All vessels will display appropriate lights and shapes and will monitor VHF Ch 10 and Ch 16.

Mariners are advised to navigate with caution in the area.

**Chart temporarily affected - Aus 65 - Aus 327 - Aus 742 - Aus 743**

**395(T)/2021 AUSTRALIA - WESTERN AUSTRALIA - Broome - Survey operations completed**

*Former Notice* - 636(T)/2020 is cancelled  
Australian Hydrographic Office

Cancel this notice on receipt.

**Chart formerly affected - Aus 50 - Aus 323 - Aus 324**

**396(T)/2021 AUSTRALIA - WESTERN AUSTRALIA - Dampier Archipelago - Roly Rock - Drill rig moved**

*Former Notice* - 318(T)/2020 is cancelled  
Sapura Energy

Cancel this notice on receipt.

**Chart formerly affected - Aus 57 - Aus 327 - Aus 742**

**397(T)/2021 AUSTRALIA - WESTERN AUSTRALIA - Flat Island - Drill rig**

Sapura Energy

Drill rig *Valaris 107* is conducting drilling operations in position 21° 33'.09 S 114° 35'.06 E.

**Chart temporarily affected - Aus 328 - Aus 744**

**398(T)/2021 AUSTRALIA - WESTERN AUSTRALIA - Fremantle - Harbour works completed**

*Former Notice* - 639(T)/2020 is cancelled  
Fremantle Ports Notice 7/2020

Cancel this notice on receipt.

**Chart formerly affected - Aus 113**

**399(T)/2021 AUSTRALIA - WESTERN AUSTRALIA - Fremantle - Hall Bank - Light beacon damaged**  
Fremantle Ports Notice 2(T)/2020

The port light beacon, *Fl.R.4s 7m 4M* (32° 01'.89 S 115° 42'.73 E), is damaged; a temporary light, *Oc.Y 3s 7m*, exists on the beacon.

**Chart temporarily affected - Aus 112 - Aus 754**

**400(T)/2021 AUSTRALIA - WESTERN AUSTRALIA - Fremantle - Hall Bank - Light beacon damaged**  
*Former Notice - 291(T)/2020 is cancelled*  
Fremantle Ports Notice 2(T)/2020

Cancel this notice on receipt.

**Chart formerly affected - Aus 112 - Aus 113 - Aus 754**

**401(T)/2021 AUSTRALIA - WESTERN AUSTRALIA - Fremantle - Dredging operations**  
Fremantle Ports Notice 2/2018

The dredge *Modi-R* is conducting dredging operations in an area bounded by the following positions:

32° 08'.33 S 115° 42'.20 E

32° 08'.27 S 115° 42'.40 E

32° 03'.60 S 115° 41'.34 E

32° 03'.63 S 115° 41'.13 E.

Mariners are advised to navigate with caution in the area.

**Chart temporarily affected - Aus 112 - Aus 117 - Aus 754**

**402(T)/2021 AUSTRALIA - WESTERN AUSTRALIA - Fremantle - Dredging operations**  
*Former Notice - 800(T)/2019 is cancelled*  
Fremantle Ports Notice 2/2018

Cancel this notice on receipt.

**Chart formerly affected - Aus 112 - Aus 113 - Aus 117 - Aus 754**

**403(T)/2021 AUSTRALIA - WESTERN AUSTRALIA - Geraldton - Light buoy relit**  
*Former Notice - 341(T)/2021 is cancelled*  
Mid West Ports

Cancel this notice on receipt.

**Chart formerly affected - Aus 81**

**404(T)/2021 AUSTRALIA - WESTERN AUSTRALIA - Koolan Island - Mooring buoy**  
Trinacria Consulting

The mooring buoy (16° 09'.15 S 123° 45'.05 E) has sunk in position.

**Chart temporarily affected - Aus 40 - Aus 41**

**405(T)/2021 AUSTRALIA - WESTERN AUSTRALIA - Muiron Islands - Drill rig northwestwards**  
Santos

Drill rig *Valaris MS-1* is conducting drilling operations in positions 21° 23'.86 S 114° 04'.08 E and 21° 23'.21 S 114° 04'.60 E.

**Chart temporarily affected - Aus 328 - Aus 329 - Aus 744**

**406(T)/2021 AUSTRALIA - WESTERN AUSTRALIA - Muiron Islands - Maintenance works northwestwards completed**  
*Former Notice - 260(T)/2021 is cancelled*  
 Woodside Energy Ltd

Cancel this notice on receipt.

**Chart formerly affected - Aus 328 - Aus 329 - Aus 744**

**407(T)/2021 AUSTRALIA - WESTERN AUSTRALIA - Rankin Bank - Well plug and abandonment works eastwards**  
 Woodside Energy Ltd

Drill rig *Ocean Apex* and support vessel *Normand Saracen* are conducting well plug and abandonment works in the following positions:

19° 30'.88 S 116° 02'.28 E  
 19° 44'.28 S 115° 44'.90 E  
 19° 44'.72 S 115° 44'.19 E  
 19° 43'.08 S 115° 51'.98 E  
 19° 42'.59 S 115° 53'.24 E  
 19° 43'.27 S 115° 51'.18 E  
 19° 26'.12 S 116° 28'.86 E.

Two special light buoys, *Fl.7s*, will be established at each location while works are in progress.

Mariners are advised to navigate with caution in the area.

**Chart temporarily affected - Aus 327**

**408(T)/2021 AUSTRALIA - WESTERN AUSTRALIA - Rottnest Island - Light altered**  
 Australian Maritime Safety Authority Auscoast Warning 65/2021

The light, *Fl.7-5s 80m 26M* (32° 00'.44 S 115° 30'.25 E), has been temporarily altered to *Fl.7-5s 80m 20M*.

**Chart temporarily affected - Aus 112 - Aus 754 - Aus 4708 (INT 708) - Aus 4709 (INT 709) - Aus 4725 (INT 725) - Aus 4726 (INT 726)**

**409(T)/2021 AUSTRALIA - VICTORIA - Port Phillip - Corio Bay - Scientific instrument**  
 Victorian Regional Channels Authority Notice 310(T)/2019

A scientific instrument marked by a special light buoy, *Fl.Y*, exists on the seabed in position 38° 05'.07 S 144° 23'.25 E.

**Chart temporarily affected - Aus 157**

**410(T)/2021 AUSTRALIA - VICTORIA - Port Phillip - Corio Bay - Scientific instrument**  
*Former Notice - 40(T)/2020 is cancelled*  
 Victorian Regional Channels Authority Notice 310(T)/2019

Cancel this notice on receipt.

**Chart formerly affected - Aus 153**

**411(T)/2021 AUSTRALIA - VICTORIA - Port Phillip - Geelong - Harbour works**  
 Parks Victoria Notice 278(T)/2019

Works associated with the construction of a floating wave attenuation structure are in progress in the vicinity of position 38° 08'.54 S 144° 21'.99 E.

Barges and support vessels are on site.

Piles exist in the area and will be marked until the floating wave attenuation structure is installed.

Mariners are advised to navigate with caution in the area.

**Chart temporarily affected - Aus 157**

**412(T)/2021 AUSTRALIA - VICTORIA - Port Phillip - Geelong - Harbour works**

Former Notice - 1232(T)/2019 is cancelled  
Parks Victoria Notice 278(T)/2019

Cancel this notice on receipt.

**Chart formerly affected - Aus 153****413(T)/2021 AUSTRALIA - VICTORIA - Port Phillip - Corio Bay - Light buoys; AIS**

Victorian Regional Channels Authority Notices 16(T)/2018, 17(T)/2018, 72(T)/2018

Starboard lateral pillar light buoys exist as follows:

<i>Position</i>	<i>Remarks</i>
38° 06'.01 S 144° 22'.92 E	<i>F.Iso.G.3s TB2</i>
38° 06'.65 S 144° 22'.34 E	<i>F.Iso.G.3s TB1</i>

Starboard lateral virtual AIS also exist at the above positions.

**Chart temporarily affected - Aus 157****414(T)/2021 AUSTRALIA - VICTORIA - Port Phillip - Corio Bay - Light buoys; AIS**

Former Notice - 179(T)/2018 is cancelled  
Victorian Regional Channels Authority Notices 16(T)/2018, 17(T)/2018, 72(T)/2018

Cancel this notice on receipt.

**Chart formerly affected - Aus 153 - Aus 157****415(T)/2021 AUSTRALIA - VICTORIA - Port Phillip - South Channel - Shoaling; virtual AIS**

Victorian Ports Corporation (Melbourne) Notice 92(T)/2021

Shoaling, with least depth 12.6m, marked by an east cardinal virtual AIS exists in position 38° 19'.74 S 144° 54'.08 E.

Mariners are advised to navigate east of this position and navigate with caution in the area.

**Chart temporarily affected - Aus 158****416(T)/2021 AUSTRALIA - VICTORIA - Portland - Shoaling**

Port of Portland Notice 56(T)/2021

Shoaling, with least depth 7.3m, extends 90m to the west of the main breakwater (38° 20'.65 S 141° 37'.40 E).

Mariners are advised to navigate with caution in the area.

**Chart temporarily affected - Aus 140****417(T)/2021 AUSTRALIA - VICTORIA - Western Port - Tooradin - Light beacon unlit**

Parks Victoria Notice 96(T)/2021

The starboard lateral light beacon, *Fl.G.10s No21* (38° 13'.43 S 145° 22'.51 E), is unlit.

**Chart temporarily affected - Aus 150 - Aus 151****418(T)/2021 AUSTRALIA - TASMANIA - Georges Bay - Lords Point - Beacon destroyed**

Marine and Safety Tasmania Notice M112(T)/2021

The starboard lateral beacon No7B (41° 18'.15 S 148° 18'.65 E) has been destroyed.

**Chart temporarily affected - Aus 169**

II

**HYDROGRAPHIC REPORTS**

NIL

*To accompany Australian Notice to Mariners 360/2021*

**ELECTRONIC NAVIGATIONAL CHART (ENC)**

Larger scale ENC content exists in this area. When using electronic navigation systems, certain vessels (e.g. restricted by depth or size) may benefit from the additional level of detail shown in the largest scale ENC product available.

*Note for chart Aus 830*

*To accompany Australian Notice to Mariners 360/2021*

**ELECTRONIC NAVIGATIONAL CHART (ENC)**

Larger scale ENC content exists in this area. When using electronic navigation systems, certain vessels (e.g. restricted by depth or size) may benefit from the additional level of detail shown in the largest scale ENC product available.

*Note for chart Aus 832*

*To accompany Australian Notice to Mariners 364/2021*

**ELECTRONIC NAVIGATIONAL CHART (ENC)**

Larger scale ENC content exists in this area. When using electronic navigation systems, certain vessels (e.g. restricted by depth or size) may benefit from the additional level of detail shown in the largest scale ENC product available.

*Note for chart Aus 112*

*To accompany Australian Notice to Mariners 364/2021*

**DREDGED AREAS**

Depths in dredged areas, although generally maintained, may be less than charted. For the latest information, consult the Harbour Master.

*Note for chart Aus 117*

*To accompany Australian Notice to Mariners 367/2021*

**ELECTRONIC NAVIGATIONAL CHART (ENC)**

Larger scale ENC content exists in this area. When using electronic navigation systems, certain vessels (e.g. restricted by depth or size) may benefit from the additional level of detail shown in the largest scale ENC product available.

*Note for chart Aus 155*

*To accompany Australian Notice to Mariners 360/2021*

**ELECTRONIC NAVIGATIONAL CHART (ENC)**

Larger scale ENC content exists in this area. When using electronic navigation systems, certain vessels (e.g. restricted by depth or size) may benefit from the additional level of detail shown in the largest scale ENC product available.

*Note for chart Aus 831*

*To accompany Australian Notice to Mariners 364/2021*

**DREDGED AREAS**

Depths in dredged areas, although generally maintained, may be less than charted. For the latest information, consult the Harbour Master.

*Note for chart Aus 112*

*To accompany Australian Notice to Mariners 364/2021*

**INNER HARBOUR - TIDAL STREAMS**

Tidal Streams in the Inner Harbour are often masked by water from the Swan River. Refer to Australia Pilot Vol I NP 13.

*Note for chart Aus 112*

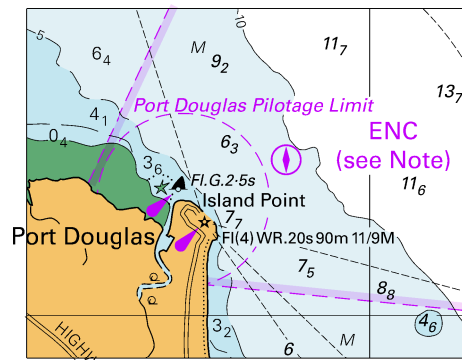
*To accompany Australian Notice to Mariners 366/2021*

**ELECTRONIC NAVIGATIONAL CHART (ENC)**

Larger scale ENC content exists in this area. When using electronic navigation systems, certain vessels (e.g. restricted by depth or size) may benefit from the additional level of detail shown in the largest scale ENC product available.

*Note for chart Aus 157*

To accompany Australian Notice to Mariners 360/2021

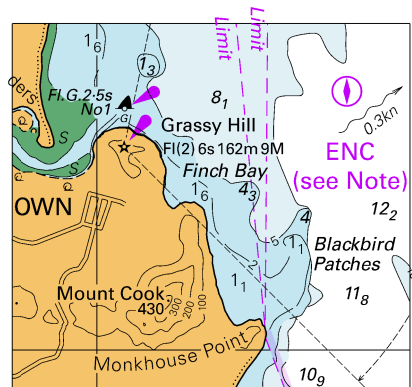


© Commonwealth of Australia 2021

Block for chart Aus 830

(58.0 x 46.1mm)

To accompany Australian Notice to Mariners 360/2021



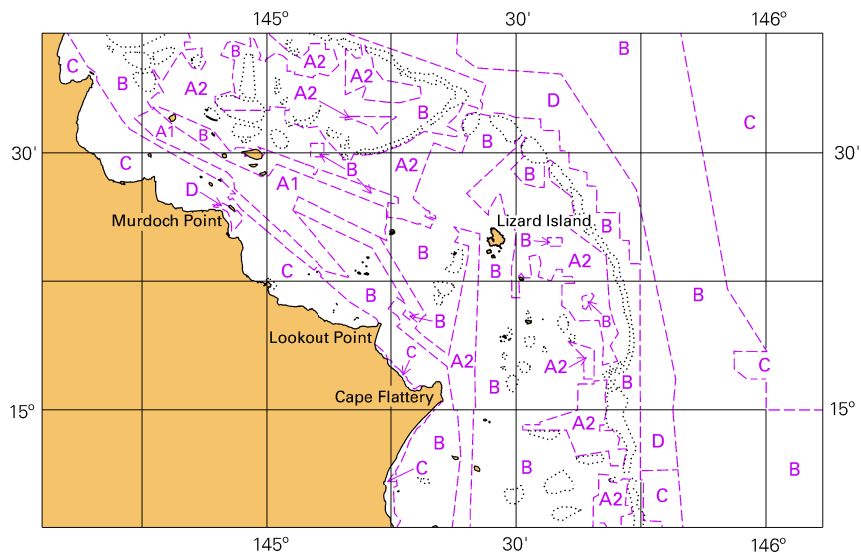
© Commonwealth of Australia 2021

Block for chart Aus 831

(52.6 x 48.0mm)



To accompany Australian Notice to Mariners 360/2021

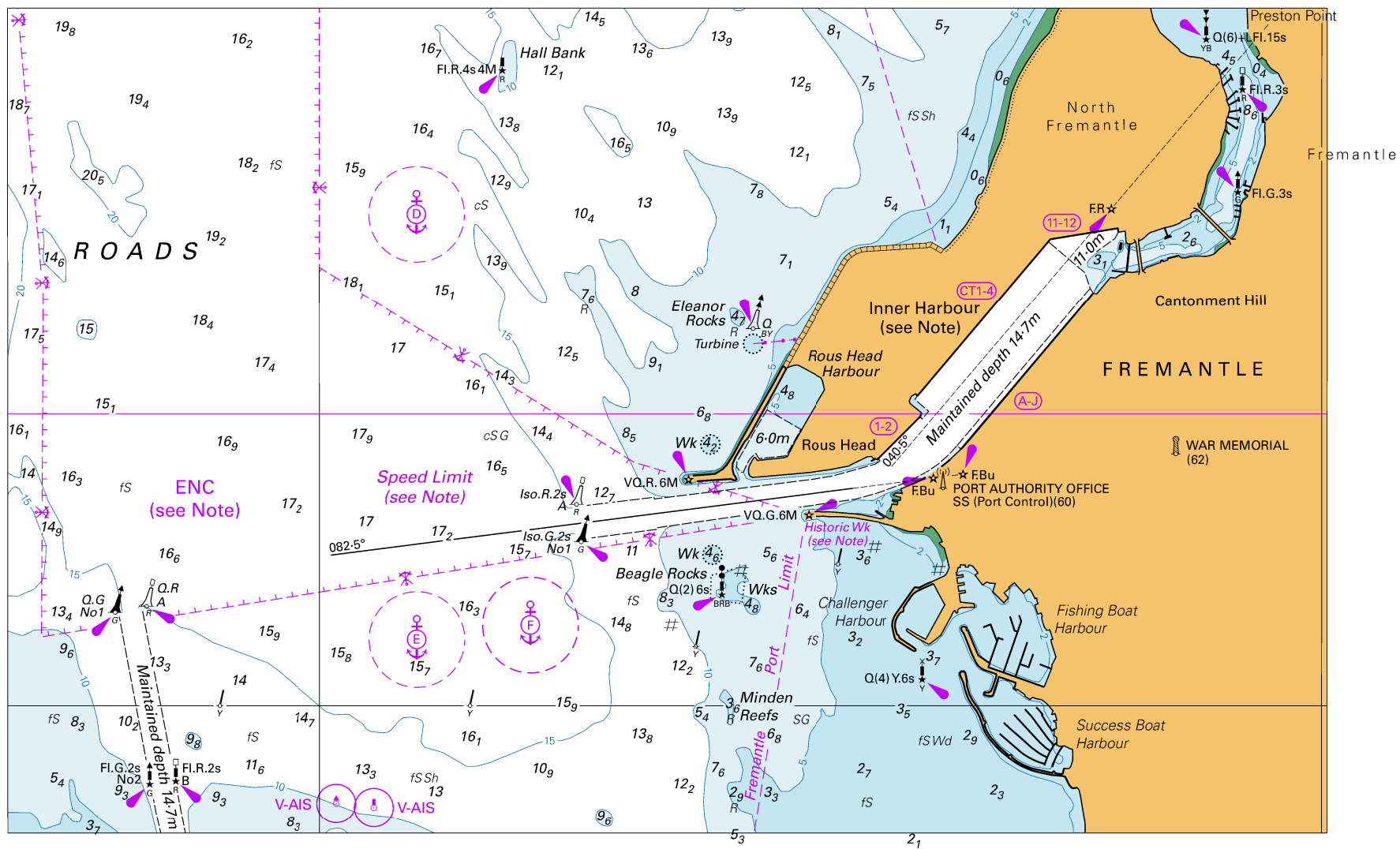


Block for chart Aus 832

(103.2 x 65.4mm)

© Commonwealth of Australia 2021

*To accompany Australian Notice to Mariners 364/2021*



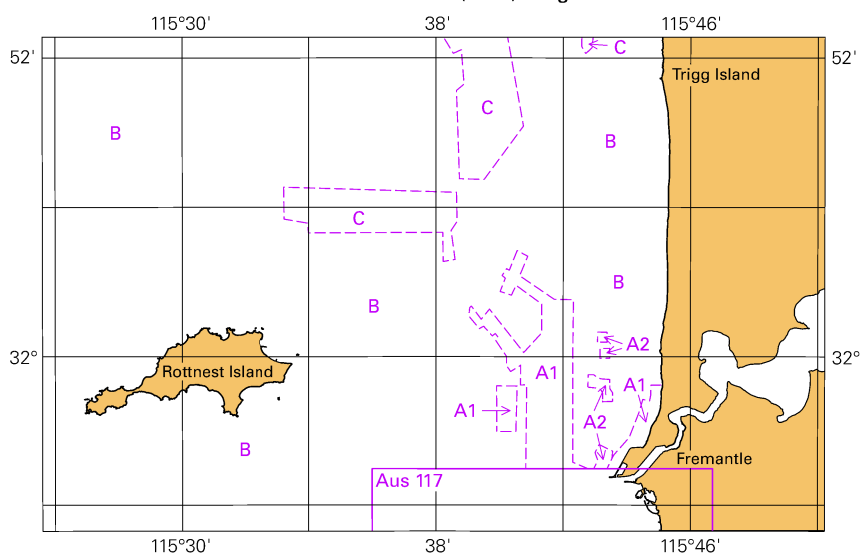
Block for chart Aus 112

© Commonwealth of Australia 2021

(221.0 x 138.3mm)

To accompany Australian Notice to Mariners 364/2021

Zone of Confidence (ZOC) Diagram

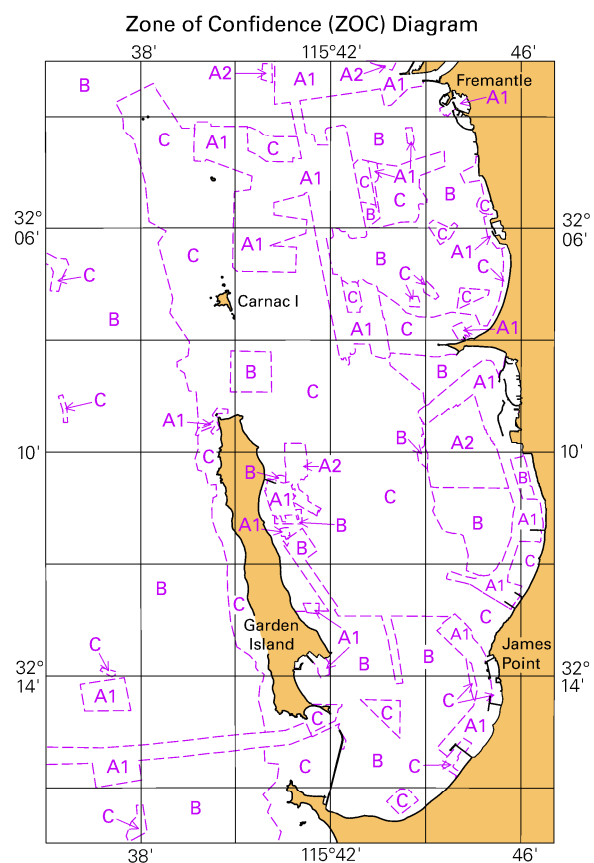


Block for chart Aus 112

(103.3 x 65.3mm)

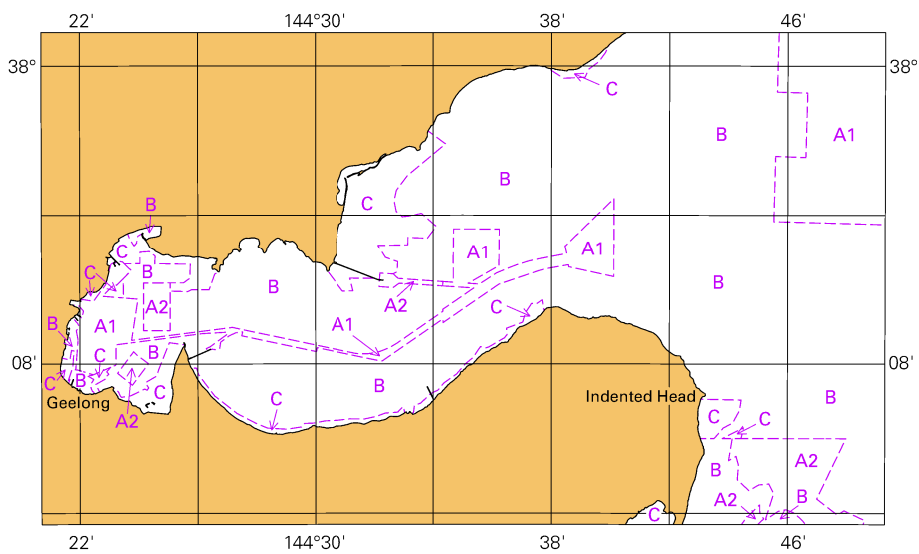
© Commonwealth of Australia 2021

To accompany Australian Notice to Mariners 364/2021



© Commonwealth of Australia 2021  
*Block for chart Aus 117* (67.2 x 103.5mm)

To accompany Australian Notice to Mariners 366/2021

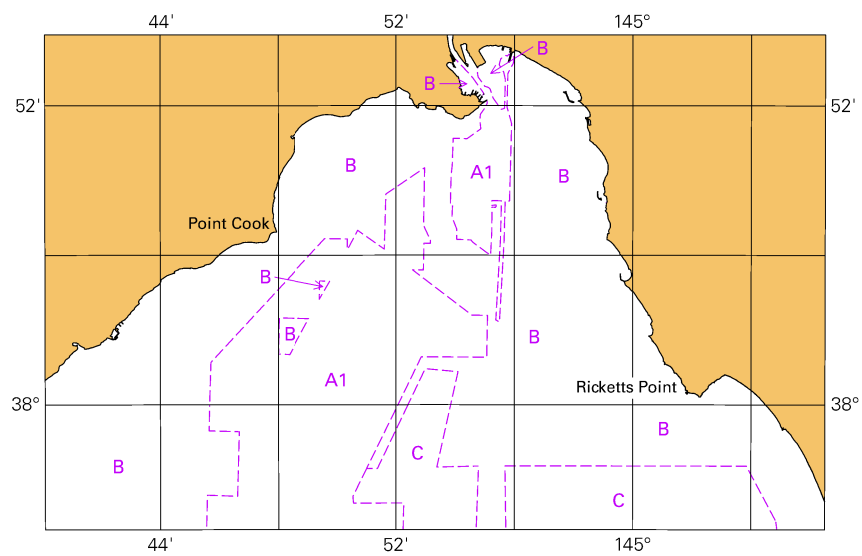


Block for chart 157

© Commonwealth of Australia 2021

(111.4 x 65.1mm)

*To accompany Australian Notice to Mariners 367/2021*



*Block for chart Aus 155*

(103.0 x 65.3mm)

© Commonwealth of Australia 2021