



16 April 2021

Edition 8

AUSTRALIAN NOTICES TO MARINERS

Notices 306 - 353

Published fortnightly by the Australian Hydrographic Office



Australian Notices to Mariners are the authority for correcting charts and publications published by the Australian Hydrographic Office covering Australia, Papua New Guinea, Solomon Islands, Australian Antarctic Territory and Timor-Leste.

Commodore S.T. DUNNE RAN
Hydrographer of Australia

SECTIONS.

- I. **Australian Notices to Mariners, including blocks and notes.**
- II. **Hydrographic Reports.**

SUPPLEMENTS.

- I. **Tracings**
- II. **Cumulative List of Australian Notices to Mariners.**
- III. **Cumulative List of Temporary and Preliminary Australian Notices to Mariners.**
- IV. **Temporary and Preliminary Notices in force.**

© Commonwealth of Australia 2021

This work is copyright. Apart from any use permitted under the Copyright Act 1968, no part may be reproduced by any process, adapted, communicated or commercially exploited without prior written permission from The Commonwealth represented by the Australian Hydrographic Office.

IMPORTANT NOTICE

This edition of Notices to Mariners includes all significant information affecting AHO products which the AHO has become aware of since the last edition. All reasonable efforts have been made to ensure the accuracy and completeness of the information, including third party information, on which these updates are based. The AHO regards third parties from which it receives information as reliable, however the AHO cannot verify all such information and errors may therefore exist. The AHO does not accept liability for errors in third party information.

GENERAL INSTRUCTIONS

The substance of these notices should be inserted on the charts affected.

Bearings are referred to the true compass and are reckoned clockwise from North; those relating to lights are given as seen by an observer from seaward.

Positions quoted in notices relate to WGS84 which is the horizontal datum for all charts produced by the Australian Hydrographic Office.

The range quoted for a light is its nominal range.

Depths are with reference to the chart datum of each chart. Heights are above mean high water springs or mean higher high water, as appropriate.

The capital letter (P) or (T) after the number of any notice denotes a preliminary or temporary notice respectively, which are contained separately at the end of the permanent notices.

REPORTING OF DANGERS

Mariners are particularly requested to notify the AUSTRALIAN HYDROGRAPHIC OFFICE, Locked Bag 8801 Wollongong, NSW 2500 (e-mail datacentre@hydro.gov.au or, alternatively by filling in and submitting the [Hydrographic Notes](#) forms located on the web site – www.hydro.gov.au), immediately on the discovery of new dangers or suspected dangers to navigation. For changes or defects in aids to navigation notify AusSAR (Fax 02-6230 6868 or email rccaus@amsa.gov.au).

AUTHORISED USE

Copies of Australian notices are available free of charge from the Australian Hydrographic Office (AHO) website (www.hydro.gov.au) and through the eNotices (email) service (www.hydro.gov.au/enotices/enotices.htm).

Individual Notices may be copied for the purpose of inserting Notice substance on official charts and publications. Paper copies may be printed by chart agents and distributed to customers on a cost recovery basis. Participating chart agents are listed on the AHO website as providing a 'Paper Notices to Mariners' service (www.hydro.gov.au/webapps/jsp/agents/agents-list.jsp). Copies of the notices may not be sold for profit without prior written agreement.

NUMERICAL INDEX OF NOTICES TO MARINERS

Edition No 8

Notices	Aus Chart, INT Chart, ENC Cell, AHP, BA Pubs
306	Aus 331
307	Aus 32, 69, 113, 153, 154, 169, 172, 174, 270, 280, 281, 724, 725, 726, 833, 834
308	Aus 195
309	Aus 808, 809
310	Aus 490, 819, 820
311	Aus 237, 238
312	Aus 25, 26
313	Aus 315, 318, 4721, INT 721
314	Aus 118, 332, 335, 336, 337, 752, 754, 755
315	Aus 40, 41
316	Aus 73, 746
317	Aus 781
318	Aus 130
319	Aus 348
320	Aus 357
321	Aus 157
322	Aus 151
323	Aus 487
324	Aus 793
325	Aus 766, 797
326	Aus 767
327(T)	Aus 236
328(T)	Aus 235, 236
329(T)	Aus 236
330(T)	Aus 236
331(T)	Aus 815
332(T)	Aus 839, 841
333(T)	Aus 248, 260, 367, 490, 820, 822
334(T)	Aus 256, 827
335(T)	Aus 256
336(T)	Aus 256
337(P)	Aus 841
338(T)	Aus 26
339(T)	Aus 25, 26
340(T)	Aus 60
341(T)	Aus 81
342(T)	Aus 81
343(T)	Aus 328, 742
344(T)	Aus 485, 780
345(T)	Aus 136, 778
346(T)	Aus 136, 778
347(T)	Aus 776, 777
348(T)	Aus 349, 787
349(T)	Aus 143
350(T)	Aus 153, 157
351(T)	Aus 143, 158
352(T)	Aus 155
353(T)	Aus 796

NUMERICAL INDEX OF CHARTS AFFECTED

Edition No 8

Aus Chart	Notices
Aus 25	312, 339(T)
Aus 26	312, 338(T), 339(T)
Aus 32	307
Aus 40	315
Aus 41	315
Aus 60	340(T)
Aus 69	307
Aus 73	316
Aus 81	341(T), 342(T)
Aus 113	307
Aus 118	314
Aus 130	318
Aus 136	345(T), 346(T)
Aus 143	349(T), 351(T)
Aus 151	322
Aus 153	307, 350(T)
Aus 154	307
Aus 155	352(T)
Aus 157	321, 350(T)
Aus 158	351(T)
Aus 169	307
Aus 172	307
Aus 174	307
Aus 195	308
Aus 235	328(T)
Aus 236	327(T), 328(T), 329(T), 330(T)
Aus 237	311
Aus 238	311
Aus 248	333(T)
Aus 256	334(T), 335(T), 336(T)
Aus 260	333(T)
Aus 270	307
Aus 280	307
Aus 281	307
Aus 315	313
Aus 318	313
Aus 328	343(T)
Aus 331	306
Aus 332	314
Aus 335	314
Aus 336	314
Aus 337	314
Aus 348	319
Aus 349	348(T)
Aus 357	320
Aus 367	333(T)
Aus 485	344(T)
Aus 487	323
Aus 490	310, 333(T)
Aus 724	307
Aus 725	307
Aus 726	307
Aus 742	343(T)
Aus 746	316

Aus Chart	Notices
Aus 752	314
Aus 754	314
Aus 755	314
Aus 766	325
Aus 767	326
Aus 776	347(T)
Aus 777	347(T)
Aus 778	345(T), 346(T)
Aus 780	344(T)
Aus 781	317
Aus 787	348(T)
Aus 793	324
Aus 796	353(T)
Aus 797	325
Aus 808	309
Aus 809	309
Aus 815	331(T)
Aus 819	310
Aus 820	310, 333(T)
Aus 822	333(T)
Aus 827	334(T)
Aus 833	307
Aus 834	307
Aus 839	332(T)
Aus 841	332(T), 337(P)
Aus 4721	313

INT Chart	Notices
INT 721	313

306 AUSTRALIA - Products - New Charts, New Editions, Withdrawn Charts
Australian Hydrographic Office

New Charts

<i>Chart</i>	<i>Title and Geographical limits</i>	<i>Scale</i>	<i>Publication Date</i>	<i>Remarks</i>
NIL				

New Electronic Navigation Chart (Aus ENC)

<i>Cell Name</i>	<i>Title</i>	<i>Publication Date</i>	<i>Remarks</i>
AU5FRE01	Australia - Western Australia - Fremantle	15 April 2021	AU5113P0 has been withdrawn.
PG303153	South Pacific Ocean - Cell 3	8 April 2021	AU303153 has been withdrawn.
PG304146	Bismarck Sea - Cell 7	8 April 2021	AU304146 has been withdrawn.
PG304148	Bismarck Sea - Cell 5	8 April 2021	AU304148 has been withdrawn.
PG304153	Papua New Guinea - New Ireland - Tanga Islands	8 April 2021	AU304153 has been withdrawn.
PG304154	South Pacific Ocean - Malum and Nuguria Islands	8 April 2021	AU304154 has been withdrawn.
PG305147	Bismarck Sea - Cell 1	8 April 2021	AU305147 has been withdrawn.
PG305149	Bismarck Sea - Vitu Islands	8 April 2021	AU305149 has been withdrawn.

New Editions and Withdrawn Charts

<i>Chart</i>	<i>Title</i>	<i>Scale</i>	<i>Publication Date</i>	<i>Remarks</i>
Aus 331 (Edition 3)	Australia - West Coast - Western Australia - Point Quobba to Pepper Point Plans: Cape Peron Flats Denham Monkey Mia	1:300 000 1:150 000 1:150 000 1:150 000	16 April 2021	New edition with general updating throughout. Chart Aus 331 Edition 2 dated 10 February 2017 is now superseded and must be withdrawn from use.

Chart permanently withdrawn

Charts listed above as withdrawn no longer meet chart carriage requirements and should be marked as "superseded" and replaced with the new chart/ new edition listed prior to passage through the area covered by the new chart.

When placing orders with a chart agent between notice of forthcoming edition and its publication, mariners should advise whether their order pertains to the current edition or the new edition.

For further details refer to the AHO website at www.hydro.gov.au for new edition and new chart stock arrival information.

307 AUSTRALIA - Products - New Charts and New Editions to be published shortly

Australian Hydrographic Office

New Charts to be published shortly

<i>Chart</i>	<i>Title</i>	<i>Scale</i>	<i>Remarks</i>
NIL			

New Editions to be published shortly

<i>Chart</i>	<i>Title</i>	<i>Scale</i>	<i>Remarks</i>
Aus 833	Australia - East Coast - Queensland - Barrow Point to Claremont Isles	1:150 000	New edition with general updating throughout; including latest bathymetric data.
Aus 834	Australia - East Coast - Queensland - Claremont Isles to Cape Weymouth	1:150 000	New edition with general updating throughout; including latest bathymetric data.

Charts to be withdrawn without replacement 30 April 2021

<i>Chart</i>	<i>Title</i>	<i>Scale</i>	<i>Publication Date</i>
Aus 32 Edition 4	Australia - North Coast - Western Australia - Cambridge Gulf Plans: Wyndham Wharf Approaches to Wyndham Wharf	1:75 000 1:7 500 1:37 500	19 April 2019
Aus 113 Edition 8	Australia - West Coast - Western Australia - Fremantle	1:7 500	27 January 2017
Aus 153 Edition 2	Australia - South Coast - Victoria - Port of Geelong	1:7 500	17 July 2015
Aus 154 Edition 10	Australia - South Coast - Victoria - Melbourne - Williamstown and Yarra Rivers Inset: Yarra River	1:7 500 1:7 500	19 May 2017
Aus 169 Edition 1	Australia - Tasmania - Plans in Tasmania (Sheet 3) Plans: Coles Bay Blackman Bay Georges Bay Schouten Passage	 1:15 000 1:25 000 1:25 000 1:75 000	21 January 2005
Aus 172 Edition 1	Australia - Tasmania - Port of Hobart Plans: Sullivans Cove Bowen Bridge	1:10 000 1:5 000 1:10 000	2 September 2005
Aus 174 Edition 1	Australia - Tasmania - Plans in Tasmania (Sheet 4) Plans: Port Huon North West Bay Port Arthur Recherche Bay Southport	 1:12 500 1:25 000 1:25 000 1:25 000 1:25 000	6 June 2008
Aus 270 Edition 4	Australia - East Coast - Queensland - Plans in Queensland (Sheet 2) Plans: Cape Melville and Pipon Islets Approaches to Heath Reef Howick Group Cape Flattery Wharf Cooktown Port Douglas	 1:75 000 1:50 000 1:50 000 1:10 000 1:10 000 1:10 000	22 February 2019

307 AUSTRALIA - Products - New Charts and New Editions to be published shortly

Charts to be withdrawn without replacement 30 April 2021 (continued)

<i>Chart</i>	<i>Title</i>	<i>Scale</i>	<i>Publication Date</i>
Aus 280 Edition 5	Australia - East Coast - Queensland - Plans in Queensland (Sheet 3) Plans: Maggie Reef to Eden Reef Flinders Group	1:75 000 1:50 000	22 February 2019
Aus 281 Edition 3	Australia - East Coast - Queensland - First Three Mile Opening to Cape Direction	1:75 000	22 February 2019
Aus 724 Edition 2	Australia - North Coast - Northern Territory - Fog Bay to Port Keats	1:150 000	13 June 2003
Aus 725 Edition 2	Australia - North Coast - Northern Territory - Port Keats to Victoria River	1:150 000	21 March 2003
Aus 726 Edition 4	Australia - North Coast - Western Australia - Approaches to Cambridge Gulf	1:150 000	18 April 2003

Charts to be withdrawn without replacement 28 May 2021

<i>Chart</i>	<i>Title</i>	<i>Scale</i>	<i>Publication Date</i>
Aus 69 Edition 1	Australia - North West Coast - Western Australia - Plans of Port of Ashburton and Onslow Plans: Port of Ashburton Onslow	1:10 000 1:12 500	18 December 2015

308 AUSTRALIA - NEW SOUTH WALES - Port Kembla - Light buoys

Port Authority of New South Wales

Aus 195 [1021/2020]

Insert	special spherical light buoy, <i>Fl(5)Y.20s</i> & <i>Fl.2s</i> , without topmark	34° 26'.947 S	150° 56'.624 E
	special spherical light buoy, <i>Fl(5)Y.20s</i> & <i>Fl.2s</i> , without topmark	34° 27'.892 S	150° 55'.067 E

309 AUSTRALIA - NEW SOUTH WALES - Port Kembla to Port Jackson - Depths

Office of Environment and Heritage NSW

Aus 808 [136/2021]

Insert	accompanying block A	33° 51'.0 S	151° 21'.0 E
	accompanying block B	34° 24'.0 S	150° 59'.0 E

Aus 809 [982/2020]

Insert	accompanying block	33° 49'.0 S	151° 21'.0 E
--------	--------------------	-------------	--------------

310 AUSTRALIA - QUEENSLAND - Barren Island - Depths
LADS Flight , UKHO

Aus 490 [1026/2020]

Insert	depth, 28 ₆ m, enclosed by contour	23° 09'.04 S	151° 22'.40 E
	depth, 28 ₆ m, enclosed by contour	23° 09'.86 S	151° 26'.45 E
	depth, 27 ₄ m, enclosed by contour	23° 11'.11 S	151° 25'.17 E
	depth, 28 ₆ m, enclosed by contour	23° 12'.67 S	151° 24'.72 E
	depth, 27m, and extend contour NE to enclose	23° 14'.77 S	151° 24'.86 E
	depth, 25m, enclosed by contour	23° 15'.91 S	151° 23'.02 E
	depth, 30 ₇ m	23° 17'.81 S	151° 24'.27 E
	depth, 32m	23° 19'.51 S	151° 27'.31 E
Delete	depth, 19 ₈ m, and enclosing contour	23° 00'.7 S	151° 03'.7 E
	depth, 31m	23° 10'.0 S	151° 27'.1 E
	depth, 29 ₅ m	23° 15'.0 S	151° 24'.3 E
	depth, 29m, and enclosing contour	23° 16'.9 S	151° 25'.6 E
	depth, 29 ₆ m, and enclosing contour	23° 17'.1 S	151° 27'.6 E
	depth, 30 ₆ m	23° 18'.4 S	151° 23'.9 E
	depth, 29 ₆ m, and enclosing contour	23° 19'.4 S	151° 27'.5 E

Aus 819 [93/2021]

Insert	depth, 28 ₆ m, enclosed by contour	23° 09'.04 S	151° 22'.40 E
	depth, 28 ₆ m, enclosed by contour	23° 09'.86 S	151° 26'.45 E
	depth, 27 ₄ m, enclosed by contour	23° 11'.11 S	151° 25'.17 E
	depth, 28 ₆ m, enclosed by contour	23° 12'.67 S	151° 24'.72 E
	depth, 27m, and extend contour NE to enclose	23° 14'.77 S	151° 24'.86 E
	depth, 25m, enclosed by contour	23° 15'.91 S	151° 23'.02 E
	depth, 30 ₇ m	23° 17'.81 S	151° 24'.27 E
	depth, 32m	23° 19'.51 S	151° 27'.31 E
Delete	depth, 29 ₆ m	23° 15'.0 S	151° 24'.2 E
	depth, 29m, and enclosing contour	23° 16'.9 S	151° 25'.6 E
	depth, 29 ₆ m, and enclosing contour	23° 17'.1 S	151° 27'.6 E
	depth, 30 ₆ m	23° 18'.4 S	151° 23'.9 E
	depth, 29 ₆ m, and enclosing contour	23° 19'.4 S	151° 27'.5 E

Aus 820 [473/2020]

Insert	depth, 28 ₆ m, enclosed by contour	23° 09'.04 S	151° 22'.40 E
	depth, 28 ₆ m, enclosed by contour	23° 09'.86 S	151° 26'.45 E
	depth, 27 ₄ m, enclosed by contour	23° 11'.11 S	151° 25'.17 E
	depth, 28 ₆ m, enclosed by contour	23° 12'.67 S	151° 24'.72 E
	depth, 27m, and extend contour NE to enclose	23° 14'.77 S	151° 24'.86 E
	depth, 25m, enclosed by contour	23° 15'.91 S	151° 23'.02 E
	depth, 30 ₇ m	23° 17'.81 S	151° 24'.27 E
Delete	depth, 19 ₈ m, and enclosing contour	23° 00'.7 S	151° 03'.7 E
	depth, 29 ₆ m	23° 15'.0 S	151° 24'.2 E
	depth, 29m, and enclosing contour	23° 16'.9 S	151° 25'.6 E
	depth, 29 ₆ m, and enclosing contour	23° 17'.1 S	151° 27'.6 E
	depth, 30 ₆ m	23° 18'.4 S	151° 23'.9 E

**311 AUSTRALIA - QUEENSLAND - Brisbane River - Eagle Farm Flats Reach to Lytton Rocks Reach -
Nav aids**

Maritime Safety Queensland Notice 65/2021

Aus 237 [139/2021]

Amend	light to <i>Q.Bu (Q Day) No4F</i>	27° 24'.49 S	153° 09'.17 E
	light to <i>Iso.Bu.2s (Iso.2s Day) No4R</i>	27° 24'.61 S	153° 09'.16 E

Aus 238 [691/2020]

Amend	light beacon to <i>Q.Bu (Q Day) No8F</i>	27° 25'.99 S	153° 06'.95 E
	light to <i>Iso.Bu.2s (Iso.2s Day) No8R</i>	27° 26'.03 S	153° 06'.87 E

312 AUSTRALIA - NORTHERN TERRITORY - Darwin - Frances Bay - Mooring buoys

Department of Infrastructure, Planning and Logistics NT Notice 29/2021

Aus 25 [187/2021]

Insert	lit mooring buoy, <i>Fl. Y. 6s</i>	12° 28'.633 S	130° 52'.062 E
	lit mooring buoy, <i>Fl. Y. 6s</i>	12° 28'.734 S	130° 52'.246 E

Aus 26 [186/2021]

Insert	lit mooring buoy, <i>Fl. Y. 6s</i>	12° 28'.633 S	130° 52'.062 E
	lit mooring buoy, <i>Fl. Y. 6s</i>	12° 28'.734 S	130° 52'.246 E

313 AUSTRALIA - WESTERN AUSTRALIA - Cape Londonderry - Well northeastwards

Santos

Aus 315 [874/2019]

Insert	danger circle with legend, <i>Well</i> , centred on	13° 07'.84 S	128° 02'.40 E
--------	---	--------------	---------------

Aus 318 [601/2020]

Move	well, centred on	13° 13'.3 S	128° 03'.9 E
	to	13° 07'.84 S	128° 02'.40 E

Aus 4721 (INT 721) [480/2020]

Move	well, centred on	13° 13'.3 S	128° 03'.9 E
	to	13° 07'.8 S	128° 02'.4 E

Delete	depth, 75m	13° 06'.0 S	128° 03'.0 E
--------	------------	-------------	--------------

314 AUSTRALIA - WESTERN AUSTRALIA - Houtman Abrolhos to Eclipse Island - Fish aggregating devices

Recfishwest

Aus 118 [NE 19/2/2021]

Replace	light buoy with special conical buoy, <i>FAD (Nov - May)</i> , without topmark	35° 13'.9 S	117° 57'.2 E
Delete	light buoy	35° 09'.8 S	118° 02'.3 E

Aus 332 [NE 21/8/2020]

Insert	special conical buoy, <i>FAD (Dec - May)</i> , without topmark	28° 29'.68 S	113° 26'.93 E
	special conical buoy, <i>FAD (Dec - May)</i> , without topmark	28° 49'.66 S	113° 39'.92 E
	special conical buoy, <i>FAD (Dec - May)</i> , without topmark	28° 51'.49 S	114° 29'.27 E
	special conical buoy, <i>FAD (Dec - May)</i> , without topmark	28° 59'.00 S	113° 46'.88 E
Delete	depth, 265m	28° 49'.7 S	113° 39'.4 E
	depth, 215m	28° 59'.3 S	113° 46'.7 E

Aus 335 [802/2020]

Insert	special conical buoy, <i>FAD (Nov - May)</i> , without topmark	33° 13'.96 S	114° 54'.49 E
Replace	light buoy with special conical buoy, <i>FAD (Nov - May)</i> , without topmark	33° 08'.7 S	114° 56'.6 E
	light buoy with special conical buoy, <i>FAD (Nov - May)</i> , without topmark	33° 16'.6 S	114° 32'.6 E
	light buoy with special conical buoy, <i>FAD (Nov - May)</i> , without topmark	33° 19'.0 S	114° 41'.8 E
Delete	light buoy	33° 14'.0 S	114° 51'.4 E

Aus 336 [150/2021]

Insert	special conical buoy, <i>FAD (Nov - May)</i> , without topmark	35° 16'.35 S	117° 58'.89 E
Replace	light buoy with special conical buoy, <i>FAD (Nov - May)</i> , without topmark	35° 13'.9 S	117° 57'.2 E
	light buoy with special conical buoy, <i>FAD (Nov - May)</i> , without topmark	35° 18'.8 S	118° 01'.9 E
	light buoy with special conical buoy, <i>FAD (Nov - May)</i> , without topmark	35° 23'.5 S	118° 05'.6 E
Delete	light buoy	35° 09'.8 S	118° 02'.3 E
	light buoy	35° 22'.0 S	118° 07'.9 E

Aus 337 [150/2021]

Insert	special conical buoy, <i>FAD (Nov - May)</i> , without topmark	35° 16'.35 S	117° 58'.89 E
Replace	light buoy with special conical buoy, <i>FAD (Nov - May)</i> , without topmark	35° 13'.9 S	117° 57'.2 E
	light buoy with special conical buoy, <i>FAD (Nov - May)</i> , without topmark	35° 18'.8 S	118° 01'.9 E
	light buoy with special conical buoy, <i>FAD (Nov - May)</i> , without topmark	35° 23'.5 S	118° 05'.6 E
Delete	light buoy	35° 09'.8 S	118° 02'.3 E
	light buoy	35° 22'.0 S	118° 07'.9 E

Aus 752 [NE 10/7/2020]

Insert	special conical buoy, <i>FAD (Dec - May)</i> , without topmark	28° 59'.00 S	113° 46'.88 E
--------	--	--------------	---------------

Aus 754 [189/2021]

Move	buoy	31° 42'.0 S	115° 07'.0 E
	to	31° 42'.00 S	115° 07'.98 E
	buoy	32° 06'.8 S	115° 07'.0 E
	to	32° 06'.78 S	115° 07'.26 E

Aus 755 [990/2020]

Insert	special conical buoy, <i>FAD (Nov - May)</i> , without topmark	33° 13'.96 S	114° 54'.49 E
Replace	light buoy with special conical buoy, <i>FAD (Nov - May)</i> , without topmark	33° 08'.7 S	114° 56'.6 E
Delete	light buoy	33° 14'.0 S	114° 51'.4 E

315 AUSTRALIA - WESTERN AUSTRALIA - Koolan Island - Mooring buoys

Mount Gibson Iron Ltd

Aus 40 [1249/2019]

Insert	yellow cylindrical mooring buoy	16° 08'.908 S	123° 44'.311 E
	yellow cylindrical mooring buoy	16° 08'.996 S	123° 44'.499 E
	yellow cylindrical mooring buoy	16° 09'.140 S	123° 44'.727 E

Delete	mooring buoy	16° 09'.00 S	123° 44'.47 E
	mooring buoy	16° 09'.12 S	123° 44'.71 E

Aus 41 (Koolan Island) [289/2016]

Insert	yellow cylindrical mooring buoy	16° 08'.908 S	123° 44'.311 E
	yellow cylindrical mooring buoy	16° 08'.996 S	123° 44'.499 E
	yellow cylindrical mooring buoy	16° 09'.140 S	123° 44'.727 E

Delete	mooring buoy	16° 09'.00 S	123° 44'.47 E
	mooring buoy	16° 09'.12 S	123° 44'.71 E

316 AUSTRALIA - WESTERN AUSTRALIA - Point Quobba to Carnarvon - ESSA limit

Australian Hydrographic Office

Aus 73 (Carnarvon) [538/2019]

Insert	ESSA limit with legend, <i>ESSA (see Note)</i> , between	24° 51'.739 S	113° 34'.654 E
		24° 51'.739 S	113° 37'.070 E
		24° 51'.600 S	113° 37'.089 E
	accompanying chart note, ENVIRONMENTALLY SENSITIVE SEA AREA (ESSA)	24° 52'.4 S	113° 39'.3 E

Aus 746 [1127/2018]

Insert	ESSA limit with legend, <i>ESSA (see Note)</i> , between	24° 18'.00 S	112° 50'.60 E
		24° 18'.00 S	113° 06'.40 E
		24° 31'.00 S	113° 06'.40 E

317 AUSTRALIA - SOUTH AUSTRALIA - Port Adelaide - Navmarks; depths; pilot boarding place

Department of Planning, Transport and Infrastructure SA Notice 11/2020, 13/2020

Aus 781 [276/2021]

Insert	accompanying block	34° 46'.0 S	138° 26'.0 E
--------	--------------------	-------------	--------------

318 AUSTRALIA - SOUTH AUSTRALIA - Port Adelaide - Legends

UKHO

Aus 130 [NE 2/4/2021]

Delete	legends, 090° - 270°	34° 47'.08 S	138° 24'.46 E
--------	----------------------	--------------	---------------

319 AUSTRALIA - VICTORIA - Cape Martin - Chart Note; legend

UKHO

On certain copies only

Aus 348 [191/2021]

Delete	legend, Currents (see Note)	37° 23'.0 S	139° 23'.5 E
	chart note, CURRENTS	37° 42'.5 S	140° 32'.5 E

320 AUSTRALIA - VICTORIA - Golden Beach - Pipeline southeastwards

Esso Australia Pty Ltd

Aus 357 [51/2021]

Insert	supply pipeline, between	38° 19'.05 S	147° 36'.95 E
		38° 17'.73 S	147° 40'.26 E

321 AUSTRALIA - VICTORIA - Port Phillip - Geelong - Limeburners Point - Light beacons

Australian Hydrographic Office

Aus 157 [243/2021]

Insert	special light beacon, <i>Fl.Y.5s</i> , with topmark	38° 08'.495 S	144° 23'.135 E
--------	---	---------------	----------------

Delete	light beacon	38° 08'.53 S	144° 23'.13 E
--------	--------------	--------------	---------------

322 AUSTRALIA - VICTORIA - Western Port - Western Channel - Light buoy

Victorian Regional Channels Authority Notice 73/2020

Aus 151 [244/2021]

Replace	light buoy with starboard lateral pillar light buoy, <i>Fl.G.2·5s No5</i> , with topmark	38° 28'.41 S	145° 08'.32 E
---------	--	--------------	---------------

323 AUSTRALIA - BASS STRAIT - Three Hummock Island - Obstructions

Aventus Consulting

Aus 487 [657/2020]

Replace	legend Obstrn with legend Well	39° 53'.1 S	145° 22'.2 E
	Obstruction with depth, 62m, enclosed by danger circle, with legend Well	39° 57'.8 S	145° 15'.3 E

324 AUSTRALIA - TASMANIA - Bay of Islands - Rocks

A Boon

Aus 793 [484/2020]

Insert	underwater rock with legend, <i>Rep (2021)</i> , and extend danger line S to enclose	43° 09'.50 S	145° 44'.38 E
	contour value, 20	43° 09'.76 S	145° 44'.18 E
	underwater rock enclosed by danger circle with legend, <i>Rep (2021)</i>	43° 10'.69 S	145° 44'.78 E

Delete	depth, 18 ₄ m	43° 09'.6 S	145° 44'.3 E
	depth, 23 ₄ m	43° 10'.6 S	145° 44'.7 E

325 AUSTRALIA - TASMANIA - Maria Island - Light buoy

Australian Bureau of Meteorology

Aus 766 [195/2021]

Insert	special conical light buoy, <i>Fl(5)Y.20s</i> , without topmark	42° 31'.80 S	148° 21'.00 E
--------	---	--------------	---------------

Aus 797 [200/2020]

Insert	special conical light buoy, <i>Fl(5)Y.20s</i> , without topmark	42° 31'.80 S	148° 21'.00 E
--------	---	--------------	---------------

326 AUSTRALIA - TASMANIA - Saint Helens Point - Fish aggregating device

Marine and Safety Tasmania

Aus 767 [27/2020]

Insert	special conical light buoy, <i>Fl.Y.3s FAD (Oct - Apr)</i> , without topmark	41° 14'.48 S	148° 24'.57 E
--------	--	--------------	---------------

327(T)/2021 AUSTRALIA - QUEENSLAND - Moreton Bay - Fison Channel - Light beacon relit*Former Notice* - 252(T)/2021 is cancelled

Maritime Safety Queensland Notice 81(T)/2021, 85(T)/2021

Cancel this notice on receipt.

Chart formerly affected - Aus 236**328(T)/2021 AUSTRALIA - QUEENSLAND - Moreton Bay - Spitfire Channel - Light beacon unreliable**

Maritime Safety Queensland Notice 103(T)/2021

The light beacon, *Fl. Y. 1.5s S1* (27° 02'.88 S 153° 15'.99 E), is unreliable.**Chart temporarily affected - Aus 235 - Aus 236****329(T)/2021 AUSTRALIA - QUEENSLAND - Moreton Bay - Waterloo Bay - Dredging operations***Former Notice* - 156(T)/2021 is cancelled

Maritime Safety Queensland Notice 115(T)/2021

The vessels *Ken Harvey* and *Frank Wilson* are conducting dredging operations in the channel (27° 28'.05 S 153° 13'.24 E).

The vessels will moor in positions 27° 27'.20 S 153° 12'.87 E and 27° 27'.25 S 153° 12'.99 E when not in use.

The vessels will monitor VHF Ch 13.

Mariners are advised to navigate with caution in the area.

Chart temporarily affected - Aus 236**330(T)/2021 AUSTRALIA - QUEENSLAND - Moreton Bay - Lamb Island - Wreck; light buoy**

Maritime Safety Queensland Notice 104(T)/2021

A wreck marked by a special light buoy, *Fl. Y. 2.5s*, exists in position 27° 37'.89 S 153° 22'.51 E.**Chart temporarily affected - Aus 236****331(T)/2021 AUSTRALIA - QUEENSLAND - Point Arkwright - Fish aggregating devices restored***Former Notice* - 115(T)/2021 is cancelled

Department of Agriculture and Fisheries

Cancel this notice on receipt.

Chart formerly affected - Aus 815**332(T)/2021 AUSTRALIA - QUEENSLAND - Poll Islet - Wreck**

Maritime Safety Queensland, Australian Border Force

A stranded wreck exists in position 10° 15'.17 S 142° 49'.58 E.

Chart temporarily affected - Aus 839 - Aus 841

333(T)/2021 AUSTRALIA - QUEENSLAND - Shoalwater Bay - Live firing

Maritime Safety Queensland Notice 110(T)/2021, 111(T)/2021

Live firing will be conducted in the marine component of the Shoalwater Bay training area during the period 19 April to 23 April 2021.

A marine danger area extends to all internal waters bounded by the following positions:

22° 21'.20 S 150° 10'.52 E
 22° 35'.87 S 150° 28'.80 E
 22° 36'.95 S 150° 36'.82 E
 22° 33'.13 S 150° 42'.40 E
 22° 28'.50 S 150° 45'.29 E
 22° 20'.36 S 150° 43'.10 E
 22° 17'.71 S 150° 33'.66 E
 22° 22'.58 S 150° 30'.40 E
 22° 31'.07 S 150° 34'.01 E
 22° 33'.77 S 150° 33'.27 E
 22° 20'.35 S 150° 12'.00 E;
 and
 22° 31'.83 S 150° 45'.20 E
 22° 37'.35 S 150° 44'.31 E
 22° 46'.20 S 150° 48'.51 E
 22° 41'.12 S 150° 50'.17 E
 22° 32'.22 S 150° 47'.36 E.

All waters, creeks, beaches and other areas within the declared marine danger area are not available for access.

There will be a safe anchorage available at Port Clinton, South Arm Port Clinton and Supply Bay Townshend Island.

Mariners are advised to keep clear of this area throughout the above times.

Chart temporarily affected - Aus 248 - Aus 260 - Aus 367 - Aus 490 - Aus 820 - Aus 822

334(T)/2021 AUSTRALIA - QUEENSLAND - Townsville - Ross River - Dredging operations

Maritime Safety Queensland Notice 120(T)/2021

The barge *PMG 121* and support vessels are conducting dredging operations in the Ross River entrance (19° 15'.39 S 146° 50'.82 E).

The barge will deploy anchors marked by light buoys. The barge will monitor VHF Ch 16.

Mariners are advised to navigate with caution in the area.

Chart temporarily affected - Aus 256 - Aus 827

335(T)/2021 AUSTRALIA - QUEENSLAND - Townsville - Navaid re-alignment works; virtual AIS

Maritime Safety Queensland Notice 122(T)/2021, 125(T)/2021

Barge *PMG181* and support vessels are conducting works to re-align nav aids in the channel as part of the Townsville Port Expansion Project.

Light beacons will be temporarily withdrawn and virtual AIS have been established at the following light beacons:

19° 10'.46 S 146° 52'.53 E
 19° 11'.25 S 146° 52'.21 E
 19° 11'.73 S 146° 51'.84 E
 19° 12'.20 S 146° 51'.54 E
 19° 12'.66 S 146° 51'.24 E
 19° 13'.12 S 146° 50'.95 E
 19° 13'.58 S 146° 50'.65 E
 19° 14'.05 S 146° 50'.35 E
 19° 14'.58 S 146° 50'.03 E.

Mariners are advised to navigate with caution in the area.

Chart temporarily affected - Aus 256

336(T)/2021 AUSTRALIA - QUEENSLAND - Townsville - Ross River - Wreck; light buoy
Maritime Safety Queensland Notice 127(T)/2021

A wreck marked by a special light buoy, Q.Y, exists in position 19° 16'.52 S 146° 49'.94 E.

Chart temporarily affected - Aus 256

337(P)/2021 AUSTRALIA - TORRES STRAIT - Boigu Island - Shoaling
HMAS *Leeuwin*

Latest survey shows shoaler depths than those charted may exist in areas bounded by the following positions:

9° 14'.38 S 142° 15'.82 E
9° 15'.78 S 142° 19'.88 E
9° 15'.49 S 142° 20'.00 E
9° 13'.58 S 142° 16'.26 E;
and
9° 12'.49 S 142° 15'.50 E
9° 12'.33 S 142° 13'.73 E
9° 13'.16 S 142° 13'.24 E
9° 13'.20 S 142° 15'.21 E.

Mariners are advised to navigate with caution in the area.

Charts will be updated in due course.

Chart which will be affected - Aus 841

338(T)/2021 AUSTRALIA - NORTHERN TERRITORY - Darwin - Elizabeth River - Survey operations completed
Former Notice - 207(T)/2021 is cancelled
Northern Territory Government

Cancel this notice on receipt.

Chart formerly affected - Aus 26

339(T)/2021 AUSTRALIA - NORTHERN TERRITORY - Darwin - Frances Bay - Wreck salvaged
Former Notice - 203(T)/2021 is cancelled
Department of Infrastructure, Planning and Logistics NT Notice 32(T)/2021

Cancel this notice on receipt.

Chart formerly affected - Aus 25 - Aus 26

340(T)/2021 AUSTRALIA - WESTERN AUSTRALIA - Dampier - Parker Point - Light beacon restored
Former Notice - 638(T)/2020 is cancelled
Pilbara Ports Authority Notice D5(T)/2021

Cancel this notice on receipt.

Chart formerly affected - Aus 60

341(T)/2021 AUSTRALIA - WESTERN AUSTRALIA - Geraldton - Light buoy unlit
Mid West Ports Notice 8/2021

The starboard lateral light buoy, *Fl(2)G.5s C* (28° 44'.69 S 114° 35'.67 E), is unlit.

Chart temporarily affected - Aus 81

342(T)/2021 AUSTRALIA - WESTERN AUSTRALIA - Geraldton - Harbour works
Mid West Ports Notice 9/2021

Vessels *Margaret*, *Anne Marie* and *Valiant II* and support vessels *Marie Pierre* and *AMS 14* are conducting replacement works on light beacon, *Oc.R.3s 7M No2*, and remediation works including diving operations on beacons *No1* and beacons *No7* to *No22* in the entrance channel (28° 45'.27 S 114° 35'.66 E). A 100m exclusion zone exists around the works.

Colours and shapes of the nav aids may be temporarily obscured during the works.

Vessels will monitor VHF Ch 11 and Ch 16.

Mariners are advised to navigate with caution in the area.

Chart temporarily affected - Aus 81

343(T)/2021 AUSTRALIA - WESTERN AUSTRALIA - Montebello Islands - Subsea operations northwestwards
Woodside Energy Ltd

On or about 20 April 2021, vessel *Seven Oceans* will be conducting pipe laying and subsea operations between positions 20° 01'.86 S 115° 12'.15 E and 20° 08'.88 S 115° 02'.46 E.

Mariners are advised to navigate with caution in the area.

Chart temporarily affected - Aus 328 - Aus 742

344(T)/2021 AUSTRALIA - SOUTH AUSTRALIA - Kangaroo Island - Eastern Cove - Light beacon unlit
Department for Infrastructure and Transport SA Notice 6(T)/2021

The light beacon, *Fl.4s 5M* (35° 46'.70 S 137° 47'.94 E), is unlit.

Chart temporarily affected - Aus 485 - Aus 780

345(T)/2021 AUSTRALIA - SOUTH AUSTRALIA - Port Bonython - Light buoy restored
Former Notice - 262(T)/2021 is cancelled
Department for Infrastructure and Transport SA

Cancel this notice on receipt.

Chart formerly affected - Aus 136 - Aus 778

346(T)/2021 AUSTRALIA - SOUTH AUSTRALIA - Spencer Gulf - Fairway Bank - Light beacon unlit
Department for Infrastructure and Transport SA Notice 8(T)/2021

The east cardinal light beacon, *Q(3)10s* (33° 02'.10 S 137° 44'.80 E), is unlit.

Chart temporarily affected - Aus 136 - Aus 778

347(T)/2021 AUSTRALIA - SOUTH AUSTRALIA - Tumby Island - Light beacon unlit
Department for Infrastructure and Transport SA Notice 9(T)/2021

The light beacon, *Fl.R.5s 3M* (34° 24'.31 S 136° 09'.29 E), is unlit.

Chart temporarily affected - Aus 776 - Aus 777

348(T)/2021 AUSTRALIA - VICTORIA - Port Campbell - Survey operations southwestwards
MMA Offshore

MV *Outer Limit* is conducting a geophysical survey in an area bounded by the following positions:

39° 22'.95 S 142° 45'.13 E
39° 21'.49 S 142° 48'.70 E
39° 18'.74 S 142° 46'.83 E
39° 20'.19 S 142° 43'.27 E.

Mariners are advised to navigate with caution in the area. 5M clearance requested.

Chart temporarily affected - Aus 349 - Aus 787

349(T)/2021 AUSTRALIA - VICTORIA - Port Phillip - Queenscliff - Harbour works completed

Former Notice - 790(T)/2020 is cancelled
Parks Victoria Notice 88/2020

Cancel this notice on receipt.

Chart formerly affected - Aus 143

350(T)/2021 AUSTRALIA - VICTORIA - Port Phillip - Corio Bay - Scientific instruments

Victorian Regional Channels Authority Notice 93(T)/2021

Scientific instruments exist on the seabed in the following positions:

38° 05'.17 S 144° 23'.31 E
38° 05'.35 S 144° 24'.20 E.

Chart temporarily affected - Aus 153 - Aus 157

351(T)/2021 AUSTRALIA - VICTORIA - Port Phillip - Martha Point - Light beacon unlit

Parks Victoria Notice 82(T)/2021

The light beacon, *Fl(2)Y.5s* (38° 17'.90 S 144° 58'.86 E), is unlit.

Chart temporarily affected - Aus 143 - Aus 158

352(T)/2021 AUSTRALIA - VICTORIA - Port Phillip - Hobsons Bay - Light buoy off station

Parks Victoria Notice 89(T)/2021

The special light buoy, *Fl.Y.4s R3* (37° 53'.17 S 144° 56'.38 E), is off station and in position 37° 52'.95 S 144° 56'.55 E.

Chart temporarily affected - Aus 155

353(T)/2021 AUSTRALIA - TASMANIA - Storm Bay - Scientific instruments

Maritime and Safety Tasmania Notice M96/2021

Special light buoys, *Fl.Y.*, exist in positions 43° 22'.25 S 147° 43'.22 E and 43° 21'.27 S 147° 42'.42 E.

Chart temporarily affected - Aus 796

HYDROGRAPHIC REPORTS

<i>Locality</i>	<i>Report</i>	<i>Ship/Authority</i>	<i>Observer</i>
TAS- Bay of Islands	Rocks		A Boon

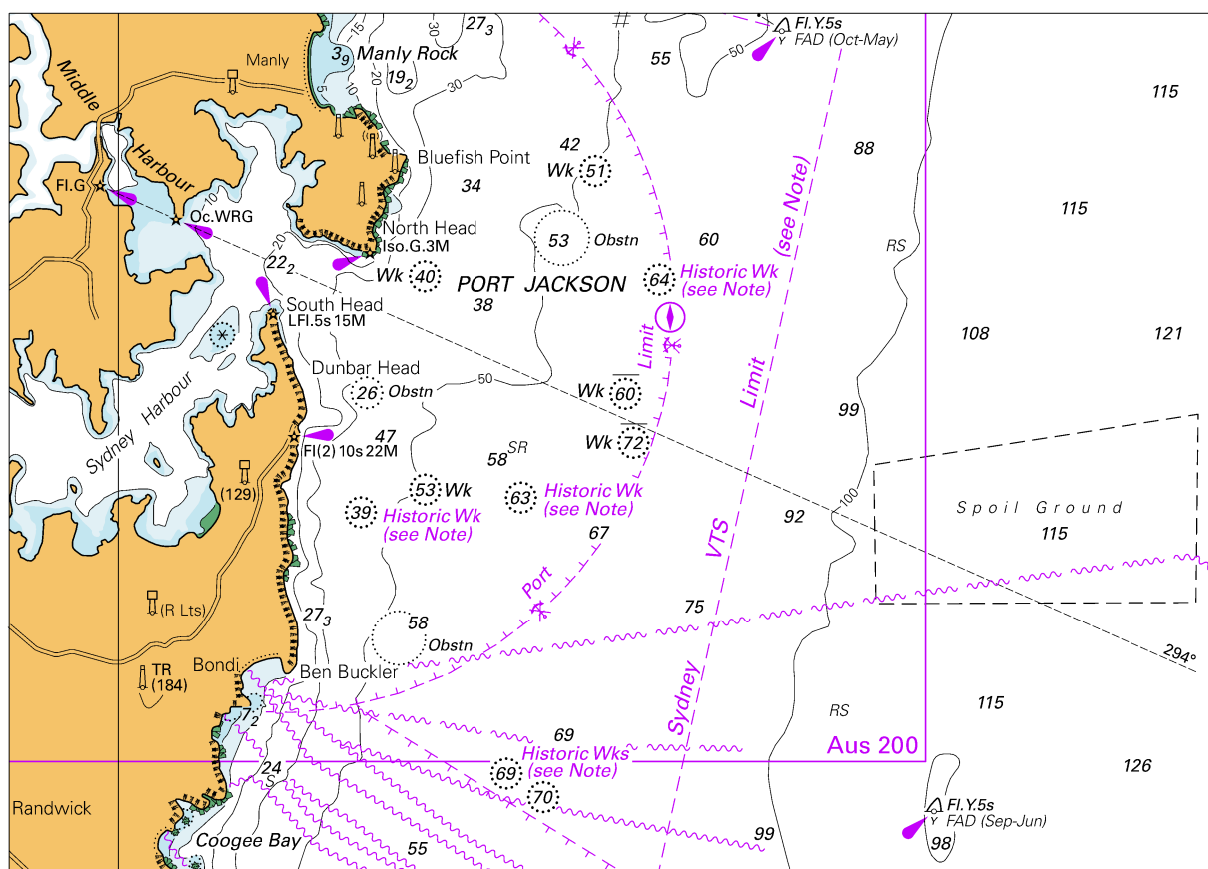
To accompany Australian Notice to Mariners 316/2021

ENVIRONMENTALLY SENSITIVE SEA AREA
(ESSA)

Areas of this chart are Environmentally Sensitive Sea Areas (ESSA). Areas within this marine protected area have restrictions on access and activities. For details see Mariners Handbook for Australian Waters AHP 20.

Note for chart Aus 73

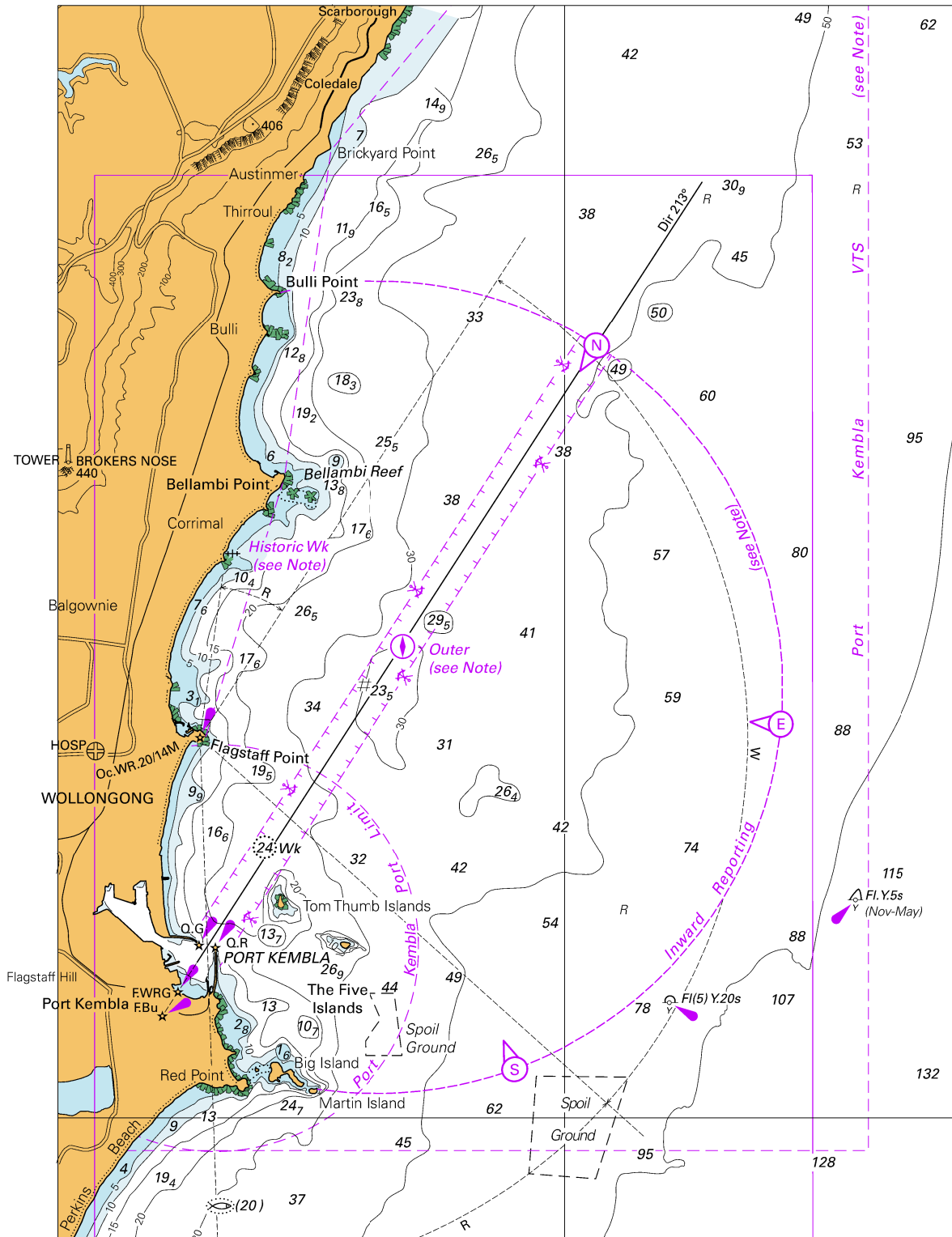
To accompany Australian Notice to Mariners 309/2021



Block A for chart Aus 808

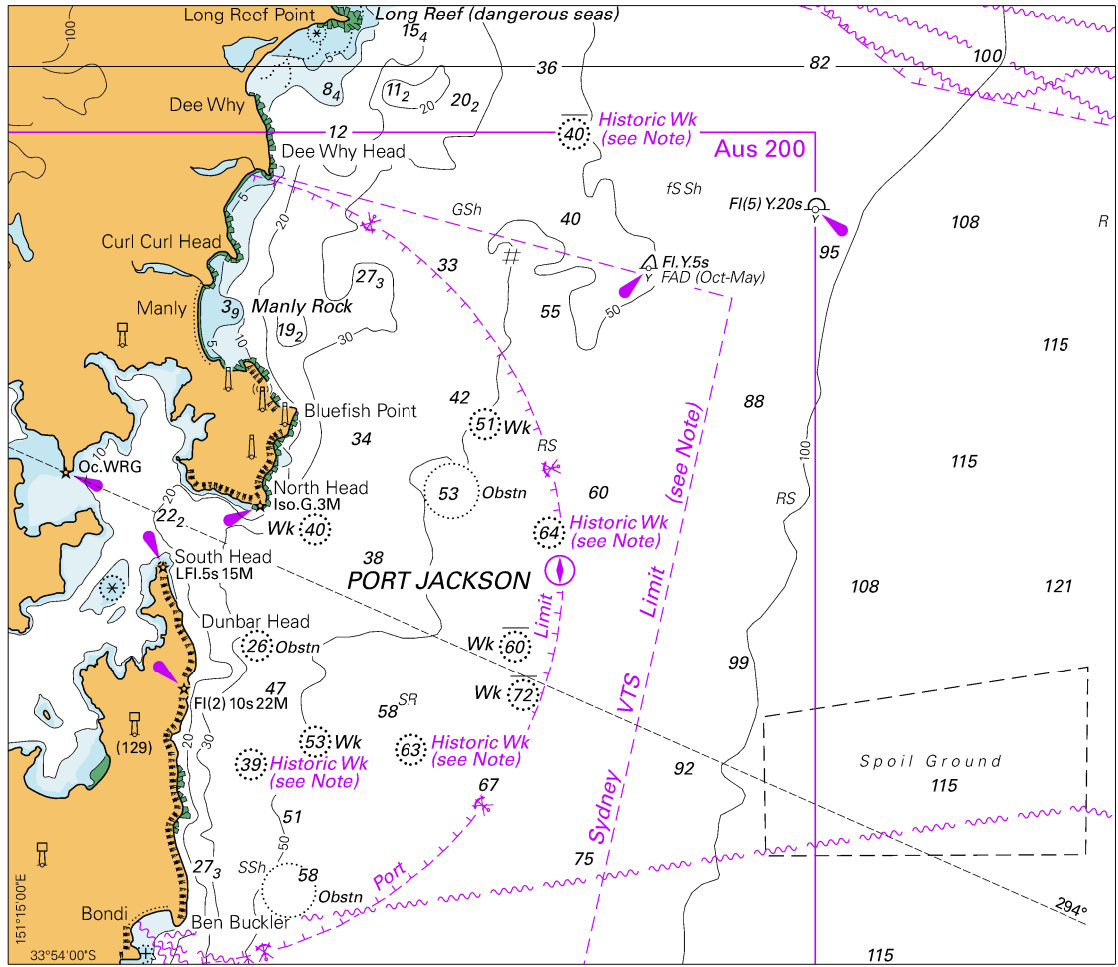
© Commonwealth of Australia 2021

(159.1 x 114.0mm)



Block B for chart Aus 808

To accompany Australian Notice to Mariners 309/2021

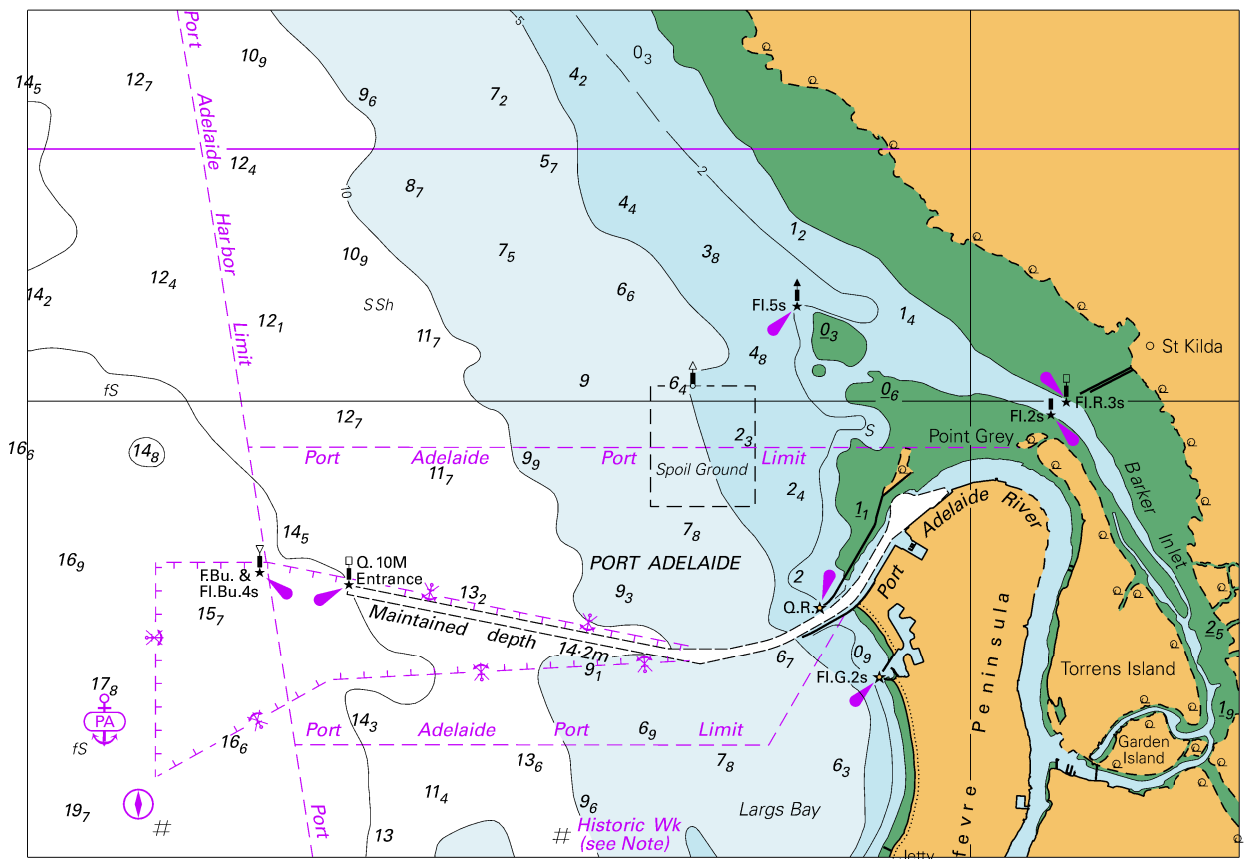


Block for chart Aus 809

© Commonwealth of Australia 2021

(146.5 x 126.8mm)

To accompany Australian Notice to Mariners 317/2021



Block for chart Aus 781

© Commonwealth of Australia 2021

(160.2 x 112.0mm)