



19 March 2021

Edition 6

# AUSTRALIAN NOTICES TO MARINERS

## Notices 227 - 266

Published fortnightly by the Australian Hydrographic Office



Australian Notices to Mariners are the authority for correcting charts and publications published by the Australian Hydrographic Office covering Australia, Papua New Guinea, Solomon Islands, Australian Antarctic Territory and Timor-Leste.

Commodore S.T. DUNNE RAN  
*Hydrographer of Australia*

---

### SECTIONS.

- I. Australian Notices to Mariners, including blocks and notes.
- II. Hydrographic Reports.

### SUPPLEMENTS.

- I. Tracings
- II. Cumulative List of Australian Notices to Mariners.
- III. Cumulative List of Temporary and Preliminary Australian Notices to Mariners.
- IV. Temporary and Preliminary Notices in force.

---

© Commonwealth of Australia 2021

This work is copyright. Apart from any use permitted under the Copyright Act 1968, no part may be reproduced by any process, adapted, communicated or commercially exploited without prior written permission from The Commonwealth represented by the Australian Hydrographic Office.

## IMPORTANT NOTICE

This edition of Notices to Mariners includes all significant information affecting AHO products which the AHO has become aware of since the last edition. All reasonable efforts have been made to ensure the accuracy and completeness of the information, including third party information, on which these updates are based. The AHO regards third parties from which it receives information as reliable, however the AHO cannot verify all such information and errors may therefore exist. The AHO does not accept liability for errors in third party information.

---

## GENERAL INSTRUCTIONS

The substance of these notices should be inserted on the charts affected.

Bearings are referred to the true compass and are reckoned clockwise from North; those relating to lights are given as seen by an observer from seaward.

Positions quoted in notices relate to WGS84 which is the horizontal datum for all charts produced by the Australian Hydrographic Office.

The range quoted for a light is its nominal range.

Depths are with reference to the chart datum of each chart. Heights are above mean high water springs or mean higher high water, as appropriate.

The capital letter (P) or (T) after the number of any notice denotes a preliminary or temporary notice respectively, which are contained separately at the end of the permanent notices.

---

## REPORTING OF DANGERS

Mariners are particularly requested to notify the AUSTRALIAN HYDROGRAPHIC OFFICE, Locked Bag 8801 Wollongong, NSW 2500 (Fax 02-4223 6599, e-mail [datacentre@hydro.gov.au](mailto:datacentre@hydro.gov.au) or, alternatively by filling in and submitting the [Hydrographic Notes](#) forms located on the web site – [www.hydro.gov.au](http://www.hydro.gov.au)), immediately on the discovery of new dangers or suspected dangers to navigation. For changes or defects in aids to navigation notify AusSAR (Fax 02-6230 6868 or email [rccaus@amsa.gov.au](mailto:rccaus@amsa.gov.au)).

---

## AUTHORISED USE

Copies of Australian notices are available free of charge from the Australian Hydrographic Office (AHO) website ([www.hydro.gov.au](http://www.hydro.gov.au)) and through the eNotices (email) service ([www.hydro.gov.au/enotices/enotices.htm](http://www.hydro.gov.au/enotices/enotices.htm)).

Individual Notices may be copied for the purpose of inserting Notice substance on official charts and publications. Paper copies may be printed by chart agents and distributed to customers on a cost recovery basis. Participating chart agents are listed on the AHO website as providing a 'Paper Notices to Mariners' service ([www.hydro.gov.au/webapps/jsp/agents/agents-list.jsp](http://www.hydro.gov.au/webapps/jsp/agents/agents-list.jsp)). Copies of the notices may not be sold for profit without prior written agreement.

## NUMERICAL INDEX OF NOTICES TO MARINERS

### Edition No 6

Notices	Aus Chart, INT Chart, ENC Cell, AHP, BA Pubs
227	Aus 115, 132, 133, 135, 136, 261
228	Aus 32, 48, 69, 130, 137, 138, 169, 172, 174, 270, 280, 281, 325
229	Amendment to Australian National Tide Tables 2021
230	Aus 255
231	Aus 814, 815
232	Aus 251
233	Aus 830
234	Aus 241
235	Aus 814
236	Aus 260
237	Aus 4622, INT 622
238	PNG 519, 520, 644
239	Aus 57, 59
240	Aus 347
241	Aus 778
242	Aus 134, 777, 778
243	Aus 157
244	Aus 151
245(T)	Aus 242, 817, 818
246(T)	Aus 814
247(T)	Aus 256
248(T)	Aus 249, 250
249(P)	Aus 260, 367, 822
250(T)	Aus 260, 261, 367, 822
251(T)	Aus 236
252(T)	Aus 236
253(T)	Aus 490, 818
254(T)	Aus 256, 827
255(T)	Aus 4604, 4622, INT 604, 622, PNG 397, 398, 554, 668
256(T)	PNG 521
257(T)	Aus 325, 326
258(T)	Aus 325, 326
259(T)	Aus 81, 332
260(T)	Aus 328, 329, 744
261(T)	Aus 132
262(T)	Aus 136, 778
263(T)	Aus 135, 136, 778
264(T)	Aus 132, 778
265(T)	Aus 349, 787
266(T)	Aus 799

# NUMERICAL INDEX OF CHARTS AFFECTED

## Edition No 6

Aus Chart	Notices
Aus 32	228
Aus 48	228
Aus 57	239
Aus 59	239
Aus 69	228
Aus 81	259(T)
Aus 115	227
Aus 130	228
Aus 132	227, 261(T), 264(T)
Aus 133	227
Aus 134	242
Aus 135	227, 263(T)
Aus 136	227, 262(T), 263(T)
Aus 137	228
Aus 138	228
Aus 151	244
Aus 157	243
Aus 169	228
Aus 172	228
Aus 174	228
Aus 236	251(T), 252(T)
Aus 241	234
Aus 242	245(T)
Aus 249	248(T)
Aus 250	248(T)
Aus 251	232
Aus 255	230
Aus 256	247(T), 254(T)
Aus 260	236, 249(P), 250(T)
Aus 261	227, 250(T)
Aus 270	228
Aus 280	228
Aus 281	228
Aus 325	228, 257(T), 258(T)
Aus 326	257(T), 258(T)
Aus 328	260(T)
Aus 329	260(T)
Aus 332	259(T)
Aus 347	240
Aus 349	265(T)
Aus 367	249(P), 250(T)
Aus 490	253(T)
Aus 744	260(T)
Aus 777	242
Aus 778	241, 242, 262(T), 263(T), 264(T)
Aus 787	265(T)
Aus 799	266(T)
Aus 814	231, 235, 246(T)
Aus 815	231
Aus 817	245(T)
Aus 818	245(T), 253(T)
Aus 822	249(P), 250(T)
Aus 827	254(T)
Aus 830	233

Aus Chart	Notices
Aus 4604	255(T)
Aus 4622	237, 255(T)
PNG 397	255(T)
PNG 398	255(T)
PNG 519	238
PNG 520	238
PNG 521	256(T)
PNG 554	255(T)
PNG 644	238
PNG 668	255(T)

INT Chart	Notices
INT 604	255(T)
INT 622	237, 255(T)

**227 AUSTRALIA - Products - New Charts, New Editions, Withdrawn Charts**

Australian Hydrographic Office , UKHO

**New Charts**

<i>Chart</i>	<i>Title and Geographical limits</i>	<i>Scale</i>	<i>Publication Date</i>	<i>Remarks</i>
NIL				

**New Electronic Navigation Chart (Aus ENC)**

<i>Cell Name</i>	<i>Title</i>	<i>Publication Date</i>	<i>Remarks</i>
PG302150	South Pacific Ocean - Enus Island to Emirau Island	11 March 2021	AU302150 has been withdrawn.
PG302151	South Pacific Ocean - Cell 4	11 March 2021	AU302151 has been withdrawn.
PG303143	Bismarck Sea - Cell 10	11 March 2021	AU303143 has been withdrawn.
PG303144	Bismarck Sea - Cell 15	11 March 2021	AU303144 has been withdrawn.
PG303145	Bismarck Sea - Cell 11 (Papisanan Reef)	18 March 2021	AU303145 has been withdrawn.
PG305146	Papua New Guinea - North Coast - Hankow Reef to Karkar Island	18 March 2021	AU305146 has been withdrawn.
PG305148	Bismarck Sea - Ottilien Reef to Whirlwind Reef	18 March 2021	AU305148 has been withdrawn.
PG406148	Papua New Guinea - New Britain - Cape Raoult to Dampier Strait	11 March 2021	AU406148 has been withdrawn.

**New Editions and Withdrawn Charts**

<i>Chart</i>	<i>Title</i>	<i>Scale</i>	<i>Publication Date</i>	<i>Remarks</i>
Aus 115 (Edition 7)	Australia - West Coast - Western Australia - Approaches to Bunbury	1:50 000	19 March 2021	New edition to cancel Bunbury plan and update the main chart. <b>Chart Aus 115 Edition 6 dated 7 February 2020 is now superseded and must be withdrawn from use.</b>
Aus 136 (Edition 3)	Australia - South Coast - South Australia - Approaches to Whyalla and Port Pirie	1:75 000	19 March 2021	New edition to cancel Port Pirie plans and general updating throughout. <b>Chart Aus 136 Edition 2 dated 7 September 2018 is now superseded and must be withdrawn from use.</b>

**Charts withdrawn without replacement**

<i>Chart</i>	<i>Title</i>	<i>Scale</i>	<i>Publication Date</i>
Aus 132 Edition 3	Australia - South Coast - South Australia - Approaches to Port Augusta Plans: Port Augusta Wharves Snapper Reach to Port Augusta	1:37 500 1:7 500 1:20 000	18 October 2019
Aus 133 Edition 1	Australia - South Coast - Plans in South Australia (Sheet 3) Plans: Port Lincoln Wallaroo	1:7 500 1:17 500	16 December 2011

**Charts withdrawn without replacement**

Aus 135 Australia - South Coast - Plans in South Australia (Sheet 4) 13 July 2018

**Edition 2** Plans:  
 Whyalla 1:10 000  
 Port Bonython 1:12 500

Aus 261 Australia - East Coast - Queensland - Plans in Shoalwater Bay 27 May 2005

**Edition 2** Plans:  
 Supply Bay 1:25 000  
 Sabina Point 1:25 000

**Admiralty publication**

<i>NP No</i>	<i>Title</i>	<i>Date</i>	<i>Remarks</i>
NP282(2)	Admiralty List of Radio Signals. Radio Aids to Navigation, Differential GPS (DGPS), Legal Time, Radio Time Signals and Electronic Position Fixing System. The Americas, Far East and Oceania. Volume 2 Part 2, Second Edition (2021).	18/3/2021	The 2020 First Edition of NP282(2) is cancelled.

**Chart permanently withdrawn**

Charts listed above as withdrawn no longer meet chart carriage requirements and should be marked as "superseded" and replaced with the new chart/ new edition listed prior to passage through the area covered by the new chart.

When placing orders with a chart agent between notice of forthcoming edition and its publication, mariners should advise whether their order pertains to the current edition or the new edition.

For further details refer to the AHO website at [www.hydro.gov.au](http://www.hydro.gov.au) for new edition and new chart stock arrival information.

**228 AUSTRALIA - Products - New Charts and New Editions to be published shortly**

Australian Hydrographic Office

**New Charts to be published shortly**

<i>Chart</i>	<i>Title</i>	<i>Scale</i>	<i>Remarks</i>
NIL			

**New Editions to be published shortly**

<i>Chart</i>	<i>Title</i>	<i>Scale</i>	<i>Remarks</i>
Aus 130	Australia - South Coast - South Australia - Approaches to Port Adelaide	1:37 500	New edition with general updating throughout.
Aus 325	Australia - North West Coast - Western Australia - Rowley Shoals to Bedout Islet	1:300 000	New edition with general updating throughout; including the addition of plan Lagoon Entrance.

**Charts to be withdrawn without replacement 2 April 2021**

<i>Chart</i>	<i>Title</i>	<i>Scale</i>	<i>Publication Date</i>
Aus 48	Australia - North West Coast - Indian Ocean - Mermaid Reef	1:50 000	25 March 2011
<b>Edition 1</b>	Plan: Lagoon Entrance	1:12 500	
Aus 137	Australia - South Coast - South Australia - Port Adelaide	1:12 500	23 May 2008
<b>Edition 5</b>			
Aus 138	Australia - South Coast - South Australia - Port Adelaide Entrance Channel	1:12 500	23 November 2007
<b>Edition 1</b>			

**Charts to be withdrawn without replacement 16 April 2021**

<i>Chart</i>	<i>Title</i>	<i>Scale</i>	<i>Publication Date</i>
Aus 169	Australia - Tasmania - Plans in Tasmania (Sheet 3)		21 January 2005
<b>Edition 1</b>	Plans: Coles Bay Blackman Bay Georges Bay Schouten Passage	1:15 000 1:25 000 1:25 000 1:75 000	
Aus 172	Australia - Tasmania - Port of Hobart	1:10 000	2 September 2005
<b>Edition 1</b>	Plans: Sullivans Cove Bowen Bridge	1:5 000 1:10 000	
Aus 174	Australia - Tasmania - Plans in Tasmania (Sheet 4)		6 June 2008
<b>Edition 1</b>	Plans: Port Huon North West Bay Port Arthur Recherche Bay Southport	1:12 500 1:25 000 1:25 000 1:25 000 1:25 000	
Aus 270	Australia - East Coast - Queensland - Plans in Queensland (Sheet 2)		22 February 2019
<b>Edition 4</b>	Plans: Cape Melville and Pipon Islets Approaches to Heath Reef Howick Group Cape Flattery Wharf Cooktown Port Douglas	1:75 000 1:50 000 1:50 000 1:10 000 1:10 000 1:10 000	
Aus 280	Australia - East Coast - Queensland - Plans in Queensland (Sheet 3)		22 February 2019
<b>Edition 5</b>	Plans: Maggie Reef to Eden Reef Flinders Group	1:75 000 1:50 000	

## 228 AUSTRALIA - Products - New Charts and New Editions to be published shortly

### Charts to be withdrawn without replacement 16 April 2021 *(continued)*

<i>Chart</i>	<i>Title</i>	<i>Scale</i>	<i>Publication Date</i>
Aus 281 <b>Edition 3</b>	Australia - East Coast - Queensland - First Three Mile Opening to Cape Direction	1:75 000	22 February 2019

### Charts to be withdrawn without replacement 28 May 2021

<i>Chart</i>	<i>Title</i>	<i>Scale</i>	<i>Publication Date</i>
Aus 32 <b>Edition 4</b>	Australia - North Coast - Western Australia - Cambridge Gulf Plans: Wyndham Wharf Approaches to Wyndham Wharf	1:75 000 1:7 500 1:37 500	19 April 2019
Aus 69 <b>Edition 1</b>	Australia - North West Coast - Western Australia - Plans of Port of Ashburton and Onslow Plans: Port of Ashburton Onslow	 1:10 000 1:12 500	18 December 2015

## 229 AUSTRALIA - Product - Amendment to Australian National Tide Tables 2021

Australian Hydrographic Office

### ANTT 2021

Page 340

*Amend* TAPA BAY To Chart Datum 0.1 to 0.0

Page 354

*Amend* DAMPIER Correction to Chart Datum ENC AU5058P0 to AU5DAM02

*Delete*

DARWIN To Chart Datum AUS 24 NE 08 MAY 2015 0.0  
DARWIN To Chart Datum AUS 27 NE 08 MAY 2015 0.0  
DARWIN To Chart Datum AUS 28 NE 08 MAY 2015 0.0

Page 361

*Delete* VICTOR HARBOR To Chart Datum AUS 127 NC 30 MAR 2001 0.0  
WESTERN PORT To Chart Datum AUS 152 NE 04 JUN 2010 0.0

*Insert*

VICTOR HARBOR To Chart Datum AUS 347 NE 05 MAR 2021 0.0

## 230 AUSTRALIA - QUEENSLAND - Abbot Point - Virtual AIS

Maritime Safety Queensland Notice 73/2021

### Aus 255 [590/2020]

Insert	port lateral virtual AIS	19° 50'.833 S	148° 05'.983 E
	port lateral virtual AIS	19° 51'.579 S	148° 05'.518 E

### Aus 255 (Abbot Point Wharf) [590/2020]

Insert	port lateral virtual AIS	19° 51'.579 S	148° 05'.518 E
--------	--------------------------	---------------	----------------



**231 AUSTRALIA - QUEENSLAND - Gold Coast Seaway to Point Cartwright - Fish aggregating devices**  
Department of Agriculture and Fisheries

**Aus 814 [902/2020]**

Insert	depth, 25m, enclosed by danger circle, with legend <i>FAD</i>	27° 00'.41 S	153° 46'.70 E
	depth, 25m, enclosed by danger circle, with legend <i>FAD</i>	27° 01'.07 S	153° 45'.92 E
	depth, 25m, enclosed by danger circle, with legend <i>FAD</i>	27° 01'.09 S	153° 47'.56 E
	depth, 25m, enclosed by danger circle, with legend <i>FAD</i>	27° 24'.89 S	153° 50'.49 E
	depth, 25m, enclosed by danger circle, with legend <i>FAD</i>	27° 25'.72 S	153° 49'.76 E
	depth, 25m, enclosed by danger circle, with legend <i>FAD</i>	27° 25'.74 S	153° 51'.28 E
	depth, 25m, enclosed by danger circle, with legend <i>FAD</i>	27° 54'.56 S	153° 54'.11 E
	depth, 25m, enclosed by danger circle, with legend <i>FAD</i>	27° 55'.43 S	153° 54'.77 E
	out of position depth, 25m, enclosed by danger circle, with legend <i>FAD</i>	27° 55'.54 S	153° 53'.76 E

**Aus 815 [142/2021]**

Insert	depth, 25m, enclosed by danger circle, with legend <i>FAD</i>	26° 39'.89 S	153° 40'.79 E
	depth, 25m, enclosed by danger circle, with legend <i>FAD</i>	26° 40'.49 S	153° 40'.11 E
	depth, 25m, enclosed by danger circle, with legend <i>FAD</i>	26° 40'.71 S	153° 41'.17 E
	depth, 25m, enclosed by danger circle, with legend <i>FAD</i>	27° 00'.41 S	153° 46'.70 E
	depth, 25m, enclosed by danger circle, with legend <i>FAD</i>	27° 01'.07 S	153° 45'.92 E
	depth, 25m, enclosed by danger circle, with legend <i>FAD</i>	27° 01'.09 S	153° 47'.56 E

**232 AUSTRALIA - QUEENSLAND - Goldsmith Island - Rock**  
HMAS *Newcastle*

**Aus 251 [364/2020]**

Insert	rock which does not cover, centred on	20° 40'.04 S	149° 09'.91 E
--------	---------------------------------------	--------------	---------------

**233 AUSTRALIA - QUEENSLAND - Great Barrier Reef - Jenny Louise Shoal - Scientific instrument eastwards**

Maritime Safety Queensland Notice 82/2021

**Aus 830 [91/2021]**

Insert	special spherical light buoy, <i>Fl(5)Y.20s</i> , without topmark	16° 44'.56 S	146° 24'.54 E
--------	---	--------------	---------------

**234 AUSTRALIA - QUEENSLAND - Great Sandy Strait - Point Vernon - Beacon**  
Australian Hydrographic Office

**Aus 241 [1023/2020]**

Insert	beacon with port lateral topmark	25° 14'.62 S	152° 48'.70 E
--------	----------------------------------	--------------	---------------

**235 AUSTRALIA - QUEENSLAND - Point Lookout - Scientific instrument eastwards**  
Maritime Safety Queensland Notice 87/2021

**Aus 814 [231/2021]**

Insert	special spherical light buoy, <i>Fl(5)Y.20s</i> , without topmark	27° 23'.04 S	153° 52'.63 E
--------	---	--------------	---------------

**236 AUSTRALIA - QUEENSLAND - Sabina Point to Supply Bay - Chart withdrawn; chart limits; chart notes; legends; ZOC diagram**

Australian Hydrographic Office

*Note:* position of existing chart notes may vary on certain charts.

**Aus 260 [695/2020]**

Insert	magenta legend, <i>ENC</i> (see <i>Note</i> ), centred on	22° 10'.9 S	150° 25'.5 E
	accompanying chart note, ELECTRONIC NAVIGATIONAL CHART (ENC)	22° 19'.8 S	150° 03'.0 E
	drying height, $Q_3m$	22° 21'.90 S	150° 21'.17 E
	magenta legend, <i>ENC</i> (see <i>Note</i> ), centred on	22° 23'.60 S	150° 20'.40 E
	accompanying ZOC diagram	22° 25'.0 S	150° 04'.0 E
Delete	magenta limits with legend, Aus 261, centred on	22° 13'.0 S	150° 26'.0 E
	magenta limits with legend, Aus 261, centred on	22° 23'.0 S	150° 20'.0 E

**237 PAPUA NEW GUINEA - Pak Island - Depth**  
UKHO

**Aus 4622 (INT 622) [145/2021]**

Replace depth, 6,m, with drying height, 0<sub>4</sub>m 2° 01'.5 S 147° 34'.0 E

**238 PAPUA NEW GUINEA - Tufi Harbour - Lights**  
National Maritime Safety Authority PNG

**PNG 519 [903/2020]**

Amend light range to 16M 9° 04'.1 S 149° 17'.9 E  
light range to 15M 9° 05'.2 S 149° 19'.3 E

**PNG 520 [903/2020]**

Amend light range to 16M 9° 04'.1 S 149° 17'.9 E  
light range to 15M 9° 05'.2 S 149° 19'.3 E

**PNG 644 (Tufi Harbour) [1240/2019]**

Amend light range to 16M 9° 04'.14 S 149° 17'.93 E  
light range to 15M 9° 05'.21 S 149° 19'.28 E

**239 AUSTRALIA - WESTERN AUSTRALIA - Dampier - Infrastructure; nav aids**  
Pilbara Ports Authority Notice D28/2020

**Aus 57 [991/2020]**

Delete continuous line, between 20° 36'.73 S 116° 44'.92 E  
20° 36'.67 S 116° 44'.92 E  
20° 36'.67 S 116° 44'.94 E  
20° 36'.73 S 116° 44'.94 E

**Aus 59 [149/2021]**

Insert accompanying block 20° 36'.8 S 116° 44'.9 E

**240 AUSTRALIA - SOUTH AUSTRALIA - Cape Rabelais - Legend westwards**  
UKHO

**Aus 347 [47/2021]**

Delete legend, Currents (see Note) 37° 23'.0 S 139° 23'.5 E

**241 AUSTRALIA - SOUTH AUSTRALIA - Port Augusta - Chart withdrawn; chart limits; chart notes; legends; ZOC diagram; power station; power cable**  
Australian Hydrographic Office

*Note:* position of existing chart notes may vary on certain charts.

**Aus 778 [241/2020]**

Insert	overhead power cable with safe vertical clearance, 45m, between	32° 32'.49 S	137° 47'.06 E
		32° 32'.44 S	137° 46'.14 E
	legend, <i>Channel marked by beacons</i> , centred on	32° 34'.3 S	137° 45'.3 E
	legend, <i>Inadequately Surveyed (see ZOC diagram)</i>	32° 52'.3 S	137° 52'.1 E
	magenta legend, <i>ENC (see Note)</i> , centred on	32° 55'.0 S	137° 52'.4 E
	accompanying ZOC diagram	33° 18'.0 S	138° 00'.0 E
	accompanying chart note, ELECTRONIC NAVIGATIONAL CHART (ENC)	33° 50'.5 S	138° 00'.0 E
Delete	power station, centred on	32° 32'.3 S	137° 46'.9 E
	magenta limits with legend, Aus 132, centred on	32° 45'.0 S	137° 52'.0 E

**242 AUSTRALIA - SOUTH AUSTRALIA - Port Lincoln to Wallaroo - Chart withdrawn; chart limits; chart notes; legends; nav aids; harbor limit; ZOC diagram**

Australian Hydrographic Office

*Note:* position of existing chart notes may vary on certain charts.

**Aus 134 [163/2019]**

Insert	magenta legend, <i>ENC</i> (see <i>Note</i> ), centred on light, <i>2F.R</i>	34° 41'.8 S	135° 53'.3 E
	a dashed line in a direction 059.5° for a distance of 280m, thence a continuous line for 1290m, with legend 239.5°, emanating from light accompanying ZOC diagram	34° 43'.230 S	135° 52'.173 E
		34° 43'.230 S	135° 52'.173 E
		34° 49'.4 S	135° 53'.2 E
Replace	chart note, OMISSIONS FROM CHART with accompanying chart note, ELECTRONIC NAVIGATIONAL CHART (ENC)	34° 47'.1 S	135° 56'.7 E
Delete	magenta limits with legend, Aus 133, centred on	34° 42'.5 S	135° 53'.0 E

**Aus 777 [49/2021]**

Insert	accompanying ZOC diagram	33° 44'.5 S	136° 12'.5 E
	accompanying block	33° 55'.0 S	137° 34'.0 E
	accompanying chart note, DREDGED AREAS	34° 28'.5 S	137° 34'.8 E
Replace	chart note, OMISSIONS FROM CHART with accompanying chart note, ELECTRONIC NAVIGATIONAL CHART (ENC)	34° 17'.2 S	137° 34'.8 E

**Aus 778 [241/2021]**

Insert	accompanying chart note, DREDGED AREAS	33° 51'.5 S	137° 44'.5 E
	accompanying block	33° 53'.0 S	137° 34'.0 E

**243 AUSTRALIA - VICTORIA - Port Phillip - Point Henry - Light beacons**

Victorian Regional Channels Authority Notice 52/2021

**Aus 157 [192/2021]**

Amend	light beacon to <i>F.Bu</i> & <i>Q.Y</i>	38° 06'.84 S	144° 27'.71 E
	light beacon to <i>F.Bu</i> & <i>Q.Y</i>	38° 07'.01 S	144° 27'.41 E

**Aus 157 (Point Henry Pier) [192/2021]**

Amend	light beacon to <i>F.Bu</i> & <i>Q.Y</i>	38° 06'.84 S	144° 27'.71 E
	light beacon to <i>F.Bu</i> & <i>Q.Y</i>	38° 07'.01 S	144° 27'.41 E

**244 AUSTRALIA - VICTORIA - Western Port - Yaringa - Beacon withdrawn**

Parks Victoria Notice 63/2021

**Aus 151 [193/2021]**

Delete	beacon	38° 15'.71 S	145° 15'.61 E
--------	--------	--------------	---------------

**245(T)/2021 AUSTRALIA - QUEENSLAND - Bundaberg - Burnett River - Dredging operations**

Maritime Safety Queensland Notice 88(T)/2021

Dredge *Brisbane* is conducting dredging operations between the Inner Reach (24° 45'.58 S 152° 23'.13 E), Middle Reach (24° 45'.36 S 152° 23'.61 E), Sea Reach (24° 45'.25 S 152° 24'.77 E) and departure channel (24° 45'.27 S 152° 26'.47 E).

The dredge will also travel to and from the spoil ground (24° 43'.62 S 152° 26'.30 E).

The dredge will monitor VHF Ch 13 and Ch 16.

Mariners are advised to navigate with caution in the area.

**Chart temporarily affected - Aus 242 - Aus 817 - Aus 818**

**246(T)/2021 AUSTRALIA - QUEENSLAND - Burleigh Head to Jumpinin - Light buoys restored**

*Former Notices* - 818(T)/2020, 1047(T)/2020 are cancelled

Department of Agriculture and Fisheries

Cancel this notice on receipt.

**Chart formerly affected - Aus 814**

**247(T)/2021 AUSTRALIA - QUEENSLAND - Cape Ferguson - Scientific instrument**

Australian Institute of Marine Science

A special spar light buoy, Q(4)Y.18s, exists in position 19° 16'.52 S 147° 03'.84 E.

**Chart temporarily affected - Aus 256**

**248(T)/2021 AUSTRALIA - QUEENSLAND - Hay Point - Exclusion zone removed**

*Former Notice* - 658(T)/2019 is cancelled

Maritime Safety Queensland

Cancel this notice on receipt.

**Chart formerly affected - Aus 249 - Aus 250**

**249(P)/2021 AUSTRALIA - QUEENSLAND - Holt Island to Hexham Island - Shoaling**

LADS Flight

Latest survey shows shoaler depths than those charted may exist in areas bounded by the following positions:

22° 11'.75 S 150° 22'.51 E

22° 11'.90 S 150° 22'.99 E

22° 13'.77 S 150° 22'.25 E

22° 13'.51 S 150° 21'.60 E;

and

22° 00'.22 S 150° 23'.51 E

22° 01'.04 S 150° 23'.61 E

22° 02'.68 S 150° 18'.70 E

22° 01'.44 S 150° 16'.29 E

22° 00'.19 S 150° 21'.01 E.

Mariners are advised to navigate with caution in the area.

Charts will be updated in due course.

**Chart which will be affected - Aus 260 - Aus 367 - Aus 822**

**250(T)/2021 AUSTRALIA - QUEENSLAND - Holt Island to Hexham Island - Shoaling**

*Former Notice* - 118(P)/2019 is cancelled  
LADS Flight

Cancel this notice on receipt.

**Chart formerly affected - Aus 260 - Aus 261 - Aus 367 - Aus 822**

**251(T)/2021 AUSTRALIA - QUEENSLAND - Moreton Bay - Rainbow Channel - Wanga Wallen Bank - Wreck; light buoy**

Maritime Safety Queensland Notice 80(T)/2021

A wreck marked by a special light buoy, *Fl.Y.2-5s*, exists in position 27° 26'.40 S 153° 25'.33 E.

**Chart temporarily affected - Aus 236**

**252(T)/2021 AUSTRALIA - QUEENSLAND - Moreton Bay - Fison Channel - Light beacon unlit**

Maritime Safety Queensland Notice 81(T)/2021

The light beacon, *Fl.R.2-5s* (27° 32'.25 S 153° 17'.77 E), is unlit.

**Chart temporarily affected - Aus 236**

**253(T)/2021 AUSTRALIA - QUEENSLAND - Port Bundaberg - Wreck salvaged northwards**

*Former Notice* - 159(T)/2021 is cancelled  
Maritime Safety Queensland

Cancel this notice on receipt.

**Chart formerly affected - Aus 490 - Aus 818**

**254(T)/2021 AUSTRALIA - QUEENSLAND - Rattlesnake Island - Live firing completed**

*Former Notice* - 160(T)/2021 is cancelled  
Maritime Safety Queensland Notices 53(T)/2021, 54(T)/2021

Cancel this notice on receipt.

**Chart formerly affected - Aus 256 - Aus 827**

**255(T)/2021 PAPUA NEW GUINEA - Cape St George - Light unlit**

National Maritime Safety Authority PNG Coastal Navigation Warning 3/2021

The light, *Fl.5s 101m 10M* (4° 50'.86 S 152° 52'.61 E), is unlit.

**Chart temporarily affected - Aus 4604 (INT 604) - Aus 4622 (INT 622) - PNG 397 - PNG 398 - PNG 554 - PNG 668**

**256(T)/2021 PAPUA NEW GUINEA - Eve Shoal - Light beacon unlit**

National Maritime Safety Authority PNG Coastal Navigation Warning 2/2021

The light beacon, *Fl(2)8s 16m 10M* (8° 31'.17 S 148° 25'.39 E), is unlit.

**Chart temporarily affected - PNG 521**

**257(T)/2021 AUSTRALIA - WESTERN AUSTRALIA - Bedout Islet - Seismic survey northwards**  
Santos

On or about 7 April 2021, vessel *Shearwater Geo Coral*, with a 9000m towed array, and support vessels *Mariska-G* and *Empress* are conducting a seismic survey in areas bounded by the following positions:

19° 15'.40 S 117° 52'.85 E  
19° 33'.02 S 118° 00'.58 E  
19° 03'.83 S 119° 11'.43 E  
18° 46'.35 S 119° 03'.60 E;  
and  
18° 40'.96 S 118° 16'.16 E  
19° 26'.67 S 119° 42'.39 E  
19° 26'.84 S 120° 00'.00 E  
18° 17'.34 S 120° 00'.00 E  
17° 55'.78 S 119° 30'.13 E  
17° 57'.94 S 118° 45'.42 E.

Mariners are advised to navigate with caution in the area. 3M clearance requested.

**Chart temporarily affected - Aus 325 - Aus 326**

**258(T)/2021 AUSTRALIA - WESTERN AUSTRALIA - Bedout Islet - Survey operations northwestwards completed**  
*Former Notice* - 1054(T)/2020 is cancelled  
Santos

Cancel this notice on receipt.

**Chart formerly affected - Aus 325 - Aus 326**

**259(T)/2021 AUSTRALIA - WESTERN AUSTRALIA - Geraldton - Champion Bay - Light buoy restored**  
*Former Notice* - 123(T)/2021 is cancelled  
Mid West Ports

Cancel this notice on receipt.

**Chart formerly affected - Aus 81 - Aus 332**

**260(T)/2021 AUSTRALIA - WESTERN AUSTRALIA - Muiron Islands - Maintenance works northwestwards**  
Woodside Energy Ltd

Commencing on or about 1 April 2021, vessels *Bhagwan Dryden* and *Warrego* are conducting maintenance works on the Nganhurra riser turret mooring (21° 28'.89 S 114° 00'.49 E).

A 500m exclusion zone exists around the riser turret mooring.

**Chart temporarily affected - Aus 328 - Aus 329 - Aus 744**

**261(T)/2021 AUSTRALIA - SOUTH AUSTRALIA - Flinders Channel - Bluff Reach - Light beacon relit**  
*Former Notice* - 732(T)/2019 is cancelled  
Department of Planning, Transport and Infrastructure SA Notice 22/2019

Cancel this notice on receipt.

**Chart formerly affected - Aus 132**

**262(T)/2021 AUSTRALIA - SOUTH AUSTRALIA - Port Bonython - Light buoy unlit**  
Department for Infrastructure and Transport SA Notice 4(T)/2021

The port lateral light buoy, *Fl.R.3s No10* (33° 01'.19 S 137° 45'.67 E), is unlit.

**Chart temporarily affected - Aus 136 - Aus 778**

**263(T)/2021 AUSTRALIA - SOUTH AUSTRALIA - Port Bonython - Light buoy unlit***Former Notice* - 220(T)/2021 is cancelled

Department for Infrastructure and Transport SA Notice 4(T)/2021

Cancel this notice on receipt.

**Chart formerly affected - Aus 135 - Aus 136 - Aus 778****264(T)/2021 AUSTRALIA - SOUTH AUSTRALIA - Snapper Point to Douglas Bank - Shoaling charted***Former Notice* - 438(P)/2017 is cancelled

HydroSurvey Australia

Cancel this notice on receipt.

**Chart formerly affected - Aus 132 - Aus 778****265(T)/2021 AUSTRALIA - VICTORIA - Port Campbell - Mooring buoys southwards**

Beach Energy Limited

8 lit yellow mooring buoys, *Fl.3s*, exist within 1M radius of position 39° 06'.49 S 142° 57'.10 E.**Chart temporarily affected - Aus 349 - Aus 787****266(T)/2021 AUSTRALIA - TASMANIA - Burnie - Scientific instrument northeastwards**

Marine and Safety Tasmania Notice M67/2021

A special light buoy, *Fl.Y*, exists in position 41° 01'.32 S 146° 05'.36 E.**Chart temporarily affected - Aus 799**

II

**HYDROGRAPHIC REPORTS**

NIL



*To accompany Australian Notice to Mariners 236/2021*

**ELECTRONIC NAVIGATIONAL CHART (ENC)**

Larger scale ENC content exists in this area. When using electronic navigation systems, certain vessels (e.g. restricted by depth or size) may benefit from the additional level of detail shown in the largest scale ENC product available.

*Note for chart Aus 260*

*To accompany Australian Notice to Mariners 242/2021*

**ELECTRONIC NAVIGATIONAL CHART (ENC)**

Larger scale ENC content exists in this area. When using electronic navigation systems, certain vessels (e.g. restricted by depth or size) may benefit from the additional level of detail shown in the largest scale ENC product available.

*Note for chart Aus 134*

*To accompany Australian Notice to Mariners 242/2021*

**ELECTRONIC NAVIGATIONAL CHART (ENC)**

Larger scale ENC content exists in this area. When using electronic navigation systems, certain vessels (e.g. restricted by depth or size) may benefit from the additional level of detail shown in the largest scale ENC product available.

*Note for chart Aus 777*

*To accompany Australian Notice to Mariners 241/2021*

**ELECTRONIC NAVIGATIONAL CHART (ENC)**

Larger scale ENC content exists in this area. When using electronic navigation systems, certain vessels (e.g. restricted by depth or size) may benefit from the additional level of detail shown in the largest scale ENC product available.

*Note for chart Aus 778*

*To accompany Australian Notice to Mariners 242/2021*

**DREDGED AREAS**

Depths in dredged areas, although generally maintained, may be less than charted. For the latest information, consult the Harbour Master.

*Note for chart Aus 777*

*To accompany Australian Notice to Mariners 242/2021*

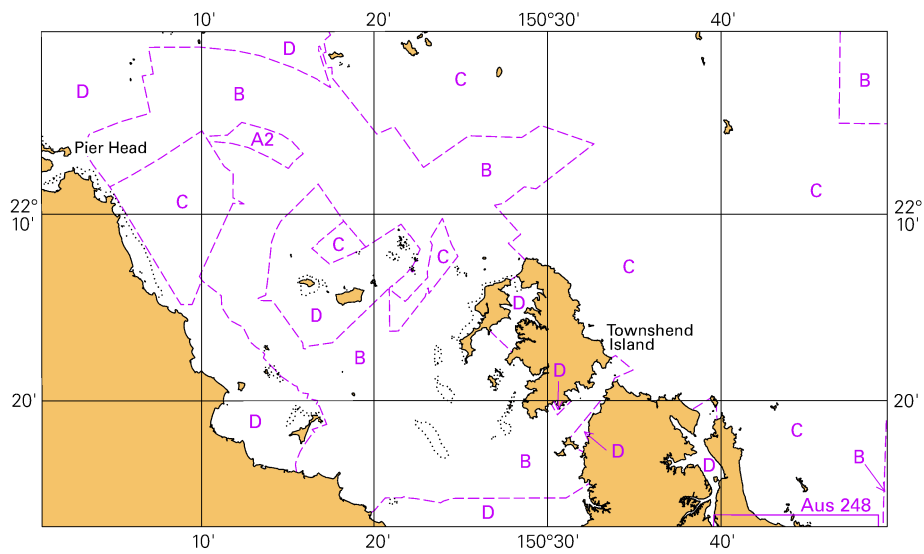
**DREDGED AREAS**

Depths in dredged areas, although generally maintained, may be less than charted. For the latest information, consult the Harbour Master.

*Note for chart Aus 778*

To accompany Australian Notice to Mariners 236/2021

Zone of Confidence (ZOC) Diagram

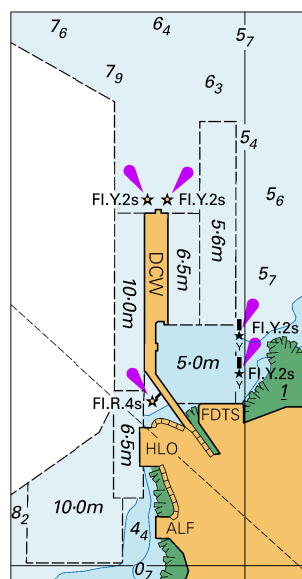


© Commonwealth of Australia 2021

Block for chart Aus 260

(110.0 x 65.4mm)

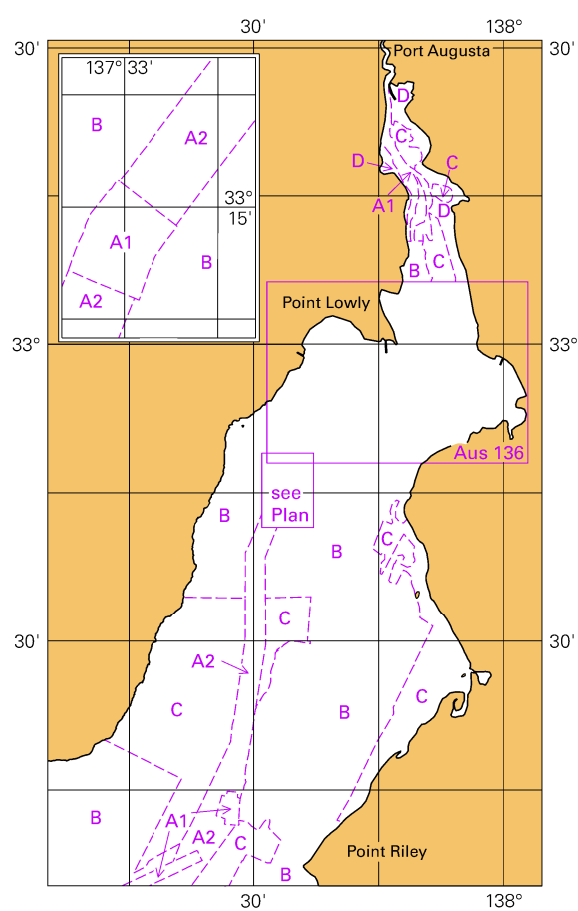
To accompany Australian Notice to Mariners 239/2021



© Commonwealth of Australia 2021

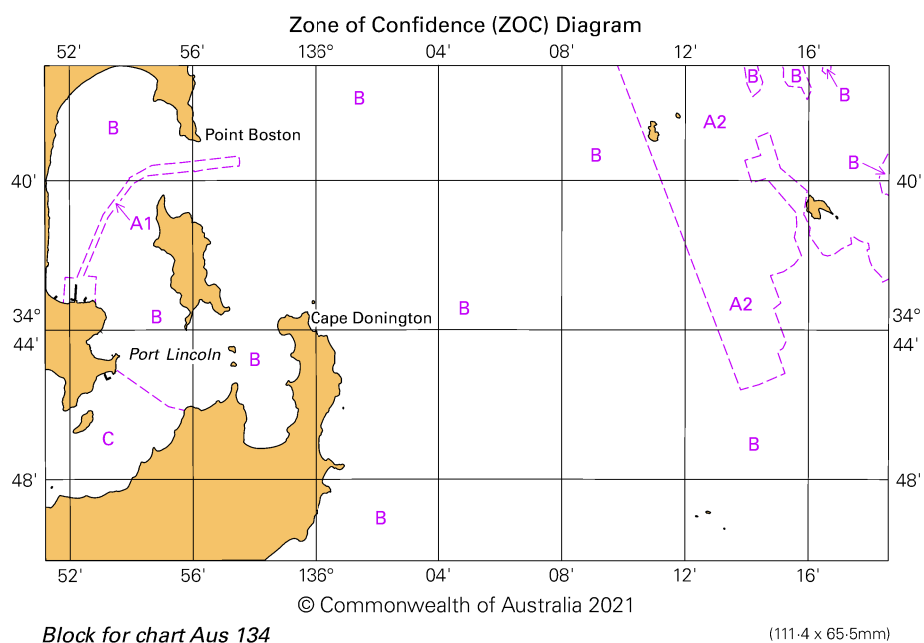
Block for chart Aus 59 (39.4 x 75.4mm)

To accompany Australian Notice to Mariners 241/2021

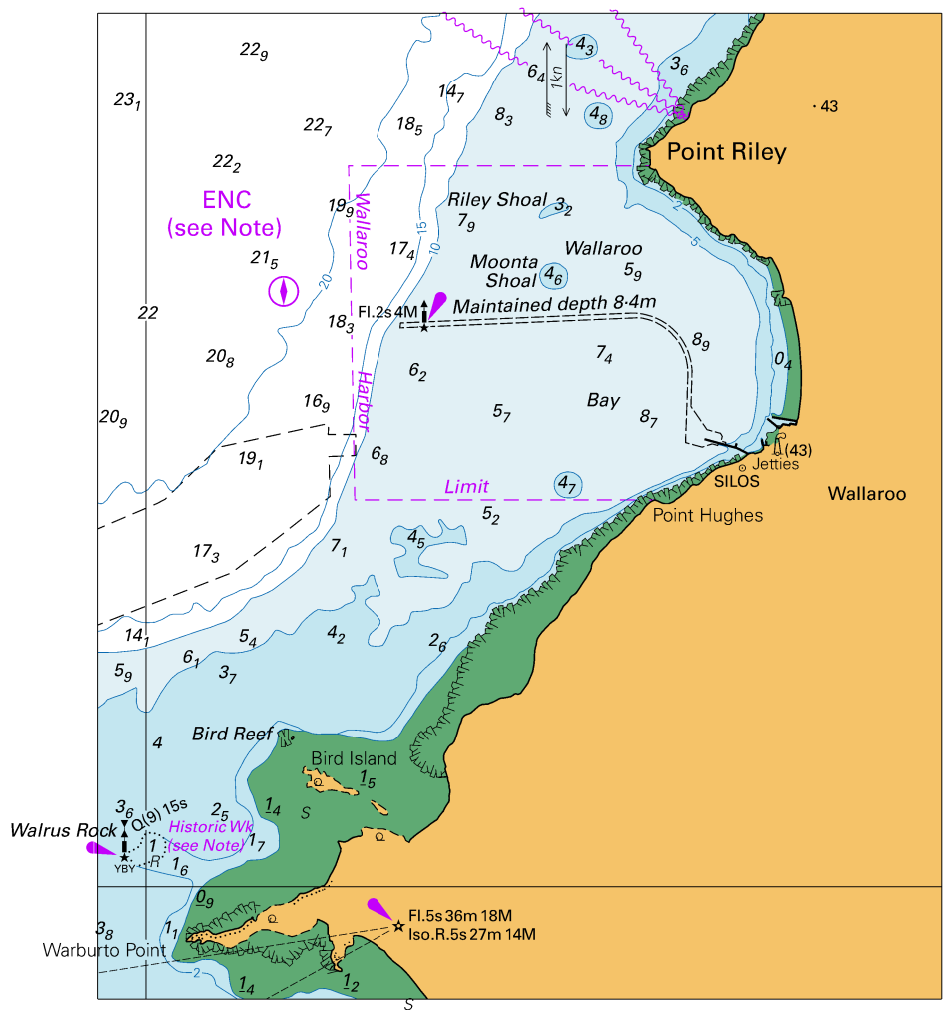


© Commonwealth of Australia 2021  
Block for chart Aus 778 (65.4 x 111.8mm)

To accompany Australian Notice to Mariners 242/2021



To accompany Australian Notice to Mariners 242/2021

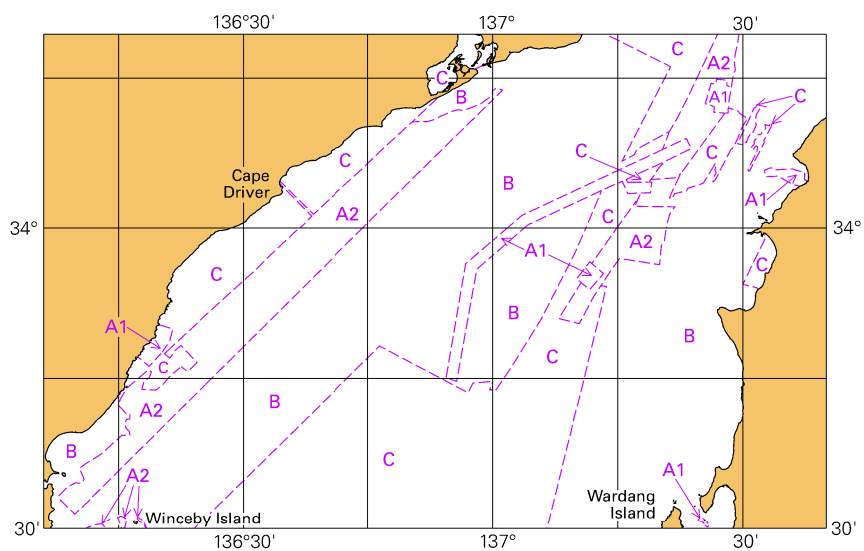


Block for chart Aus 777

© Commonwealth of Australia 2021

(111.6 x 130.4mm)

To accompany Australian Notice to Mariners 242/2021

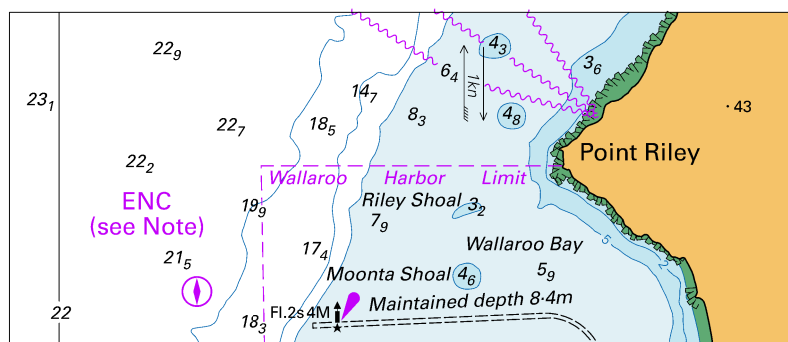


© Commonwealth of Australia 2021

Block for chart Aus 777

(103.4 x 65.3mm)

To accompany Australian Notice to Mariners 242/2021



© Commonwealth of Australia 2021

Block for chart Aus 778

(103.8 x 44.1mm)