



5 March 2021

Edition 5

AUSTRALIAN NOTICES TO MARINERS

Notices 178 - 226

Published fortnightly by the Australian Hydrographic Office



Australian Notices to Mariners are the authority for correcting charts and publications published by the Australian Hydrographic Office covering Australia, Papua New Guinea, Solomon Islands, Australian Antarctic Territory and Timor-Leste.

Commodore S.T. DUNNE RAN
Hydrographer of Australia

SECTIONS.

- I. **Australian Notices to Mariners, including blocks and notes.**
- II. **Hydrographic Reports.**

SUPPLEMENTS.

- I. **Tracings**
- II. **Cumulative List of Australian Notices to Mariners.**
- III. **Cumulative List of Temporary and Preliminary Australian Notices to Mariners.**
- IV. **Temporary and Preliminary Notices in force.**

© Commonwealth of Australia 2021

This work is copyright. Apart from any use permitted under the Copyright Act 1968, no part may be reproduced by any process, adapted, communicated or commercially exploited without prior written permission from The Commonwealth represented by the Australian Hydrographic Office.

IMPORTANT NOTICE

This edition of Notices to Mariners includes all significant information affecting AHO products which the AHO has become aware of since the last edition. All reasonable efforts have been made to ensure the accuracy and completeness of the information, including third party information, on which these updates are based. The AHO regards third parties from which it receives information as reliable, however the AHO cannot verify all such information and errors may therefore exist. The AHO does not accept liability for errors in third party information.

GENERAL INSTRUCTIONS

The substance of these notices should be inserted on the charts affected.

Bearings are referred to the true compass and are reckoned clockwise from North; those relating to lights are given as seen by an observer from seaward.

Positions quoted in notices relate to WGS84 which is the horizontal datum for all charts produced by the Australian Hydrographic Office.

The range quoted for a light is its nominal range.

Depths are with reference to the chart datum of each chart. Heights are above mean high water springs or mean higher high water, as appropriate.

The capital letter (P) or (T) after the number of any notice denotes a preliminary or temporary notice respectively, which are contained separately at the end of the permanent notices.

REPORTING OF DANGERS

Mariners are particularly requested to notify the AUSTRALIAN HYDROGRAPHIC OFFICE, Locked Bag 8801 Wollongong, NSW 2500 (Fax 02-4223 6599, e-mail datacentre@hydro.gov.au or, alternatively by filling in and submitting the [Hydrographic Notes](#) forms located on the web site – www.hydro.gov.au), immediately on the discovery of new dangers or suspected dangers to navigation. For changes or defects in aids to navigation notify AusSAR (Fax 02-6230 6868 or email rccaus@amsa.gov.au).

AUTHORISED USE

Copies of Australian notices are available free of charge from the Australian Hydrographic Office (AHO) website (www.hydro.gov.au) and through the eNotices (email) service (www.hydro.gov.au/enotices/enotices.htm).

Individual Notices may be copied for the purpose of inserting Notice substance on official charts and publications. Paper copies may be printed by chart agents and distributed to customers on a cost recovery basis. Participating chart agents are listed on the AHO website as providing a 'Paper Notices to Mariners' service (www.hydro.gov.au/webapps/jsp/agents/agents-list.jsp). Copies of the notices may not be sold for profit without prior written agreement.

NUMERICAL INDEX OF NOTICES TO MARINERS

Edition No 5

Notices	Aus Chart, INT Chart, ENC Cell, AHP, BA Pubs
178	Aus 24, 27, 28, 29, 105, 127, 152, 347
179	Aus 32, 69, 115, 132, 133, 135, 136, 261, 270, 280, 281
180	Amendment to Australian National Tide Tables 2021
181	Amendment to Papua New Guinea National Tide Tables 2021
182	Aus 269
183	Aus 240
184	Aus 240
185	Aus 841
186	Aus 25, 26
187	Aus 25, 724
188	Aus 754
189	Aus 753, 754
190	Aus 32
191	Aus 348, 485
192	Aus 157
193	Aus 151
194	Aus 169
195	Aus 766
196(T)	Aus 198
197(T)	Aus 236
198(T)	Aus 236
199(T)	Aus 815
200(T)	Aus 247, 265
201(T)	Aus 840, 841
202(T)	Aus 24
203(T)	Aus 25, 26
204(T)	Aus 24, 25, 26, 28
205(T)	Aus 25, 26
206(T)	Aus 24, 25, 26, 28
207(T)	Aus 26
208(T)	Aus 26, 28
209(T)	Aus 26
210(T)	Aus 26, 28
211(T)	Aus 26
212(T)	Aus 26, 28
213(T)	Aus 25
214(T)	Aus 25, 29
215(T)	Aus 25, 26
216(T)	Aus 24, 25, 26
217(T)	Aus 327
218(T)	Aus 328, 329, 744, 4723, 4725, INT 723, 725
219(T)	Aus 127
220(T)	Aus 135, 136, 778
221(T)	Aus 150, 151
222(T)	Aus 150, 151, 152
223(T)	Aus 150, 151
224(T)	Aus 150, 151, 152
225(T)	Aus 171, 349, 789, 796
226(T)	Aus 172

NUMERICAL INDEX OF CHARTS AFFECTED

Edition No 5

Aus Chart	Notices
Aus 24	178, 202(T), 204(T), 206(T), 216(T)
Aus 25	186, 187, 203(T), 204(T), 205(T), 206(T), 213(T), 214(T), 215(T), 216(T)
Aus 26	186, 203(T), 204(T), 205(T), 206(T), 207(T), 208(T), 209(T), 210(T), 211(T), 212(T), 215(T), 216(T)
Aus 27	178
Aus 28	178, 204(T), 206(T), 208(T), 210(T), 212(T)
Aus 29	178, 214(T)
Aus 32	179, 190
Aus 69	179
Aus 105	178
Aus 115	179
Aus 127	178, 219(T)
Aus 132	179
Aus 133	179
Aus 135	179, 220(T)
Aus 136	179, 220(T)
Aus 150	221(T), 222(T), 223(T), 224(T)
Aus 151	193, 221(T), 222(T), 223(T), 224(T)
Aus 152	178, 222(T), 224(T)
Aus 157	192
Aus 169	194
Aus 171	225(T)
Aus 172	226(T)
Aus 198	196(T)
Aus 236	197(T), 198(T)
Aus 240	183, 184
Aus 247	200(T)
Aus 261	179
Aus 265	200(T)
Aus 269	182
Aus 270	179
Aus 280	179
Aus 281	179
Aus 327	217(T)
Aus 328	218(T)
Aus 329	218(T)
Aus 347	178
Aus 348	191
Aus 349	225(T)
Aus 485	191
Aus 724	187
Aus 744	218(T)
Aus 753	189
Aus 754	188, 189
Aus 766	195
Aus 778	220(T)
Aus 789	225(T)
Aus 796	225(T)
Aus 815	199(T)
Aus 840	201(T)
Aus 841	185, 201(T)
Aus 4723	218(T)
Aus 4725	218(T)

INT Chart	Notices
INT 723	218(T)
INT 725	218(T)

178 AUSTRALIA - Products - New Charts, New Editions, Withdrawn Charts

Australian Hydrographic Office

New Charts

Chart	Title and Geographical limits	Scale	Publication Date	Remarks
NIL				

New Electronic Navigation Chart (Aus ENC)

Cell Name	Title	Publication Date	Remarks
AU5DAM01	Western Australia - Dampier North	4 March 2021	AU5058P0 has been withdrawn.
AU5DAM02	Western Australia - Dampier	4 March 2021	AU5058P0 has been withdrawn.
AU5DAM03	Western Australia - Dampier South	4 March 2021	AU5058P0 has been withdrawn.

New Editions and Withdrawn Charts

Chart	Title	Scale	Publication Date	Remarks
Aus 347 (Edition 2)	Australia - South Coast - South Australia - Backstairs Passage to Cape Martin	1:300 000	5 March 2021	New edition with general updating throughout Chart Aus 347 Edition 1 dated 31 August 2001 is now superseded and must be withdrawn from use.

Charts withdrawn without replacement

Chart	Title	Scale	Publication Date
Aus 24 Edition 3	Australia - North Coast - Northern Territory - Port Darwin - Wickham Point	1:10 000	10 March 2017
Aus 27 Edition 3	Australia - North Coast - Northern Territory - Port Darwin - Middle Arm including Channel Island	1:10 000	10 March 2017
Aus 28 Edition 3	Australia - North Coast - Northern Territory - Port Darwin - East Arm	1:12 500	10 March 2017
Aus 29 Edition 2	Australia - North Coast - Northern Territory - Approaches to Bynoe Harbour and Port Patterson	1:50 000	21 November 2014
Aus 105 Edition 4	Australia - West Coast - Western Australia - Wedge Island to Lancelin	1:50 000	29 July 2011
Aus 127 Edition 1	Australia - South Coast - Plans in South Australia - South East Coast Plans: Robe Kingston SE Port Elliot Southend Victor Harbor Cape Jaffa Marina Beachport King Head to Port Elliot Rivoli Bay Port Caroline to Robe	 1:5 000 1:7 500 1:10 000 1:10 000 1:10 000 1:15 000 1:20 000 1:50 000 1:50 000 1:75 000	30 March 2001
Aus 152 Edition 2	Australia - South Coast - Victoria - Plans in Western Port Plans: Hanns Inlet Hastings Bight Crib Point Oil Terminal Jetty Rutherford Inlet	 1:7 500 1:10 000 1:12 000 1:15 000	4 June 2010

Chart permanently withdrawn

Charts listed above as withdrawn no longer meet chart carriage requirements and should be marked as "superseded" and replaced with the new chart/ new edition listed prior to passage through the area covered by the new chart.

When placing orders with a chart agent between notice of forthcoming edition and its publication, mariners should advise whether their order pertains to the current edition or the new edition.

For further details refer to the AHO website at www.hydro.gov.au for new edition and new chart stock arrival information.

179 AUSTRALIA - Products - New Charts and New Editions to be published shortly

Australian Hydrographic Office

New Charts to be published shortly

<i>Chart</i>	<i>Title</i>	<i>Scale</i>	<i>Remarks</i>
NIL			

New Editions to be published shortly

<i>Chart</i>	<i>Title</i>	<i>Scale</i>	<i>Remarks</i>
Aus 115	Australia - West Coast - Western Australia - Approaches to Bunbury	1:50 000	New edition to cancel Bunbury plan and update the main chart.
Aus 136	Australia - South Coast - South Australia - Approaches to Whyalla and Port Pirie	1:75 000	New edition to cancel Port Pirie plans and general updating throughout.
	Plans:		
	Port Pirie	1:7 500	
	Approaches to Port Pirie	1:25 000	

Charts to be withdrawn without replacement 19 March 2021

<i>Chart</i>	<i>Title</i>	<i>Scale</i>	<i>Publication Date</i>
Aus 132	Australia - South Coast - South Australia - Approaches to Port Augusta	1:37 500	18 October 2019
Edition 3	Plans:		
	Port Augusta Wharves	1:7 500	
	Snapper Reach to Port Augusta	1:20 000	
Aus 133	Australia - South Coast - Plans in South Australia (Sheet 3)		16 December 2011
Edition 1	Plans:		
	Port Lincoln	1:7 500	
	Wallaroo	1:17 500	
Aus 135	Australia - South Coast - Plans in South Australia (Sheet 4)		13 July 2018
Edition 2	Plans:		
	Whyalla	1:10 000	
	Port Bonython	1:12 500	
Aus 261	Australia - East Coast - Queensland - Plans in Shoalwater Bay		27 May 2005
Edition 2	Plans:		
	Supply Bay	1:25 000	
	Sabina Point	1:25 000	

Charts to be withdrawn without replacement 16 April 2021

<i>Chart</i>	<i>Title</i>	<i>Scale</i>	<i>Publication Date</i>
Aus 270	Australia - East Coast - Queensland - Plans in Queensland		22 February 2019
Edition 4	(Sheet 2)		
	Plans:		
	Cape Melville and Pipon Islets	1:75 000	
	Approaches to Heath Reef	1:50 000	
	Howick Group	1:50 000	
	Cape Flattery Wharf	1:10 000	
	Cooktown	1:10 000	
	Port Douglas	1:10 000	
Aus 280	Australia - East Coast - Queensland - Plans in Queensland		22 February 2019
Edition 5	(Sheet 3)		
	Plans:		
	Maggie Reef to Eden Reef	1:75 000	
	Flinders Group	1:50 000	
Aus 281	Australia - East Coast - Queensland - First Three Mile Opening	1:75 000	22 February 2019
Edition 3	to Cape Direction		

179 AUSTRALIA - Products - New Charts and New Editions to be published shortly**Charts to be withdrawn without replacement 28 May 2021**

<i>Chart</i>	<i>Title</i>	<i>Scale</i>	<i>Publication Date</i>
Aus 32	Australia - North Coast - Western Australia - Cambridge Gulf	1:75 000	19 April 2019
Edition 4	Plans:		
	Wyndham Wharf	1:7 500	
	Approaches to Wyndham Wharf	1:37 500	
Aus 69	Australia - North West Coast - Western Australia - Plans of Port of Ashburton and Onslow		18 December 2015
Edition 1	Plans:		
	Port of Ashburton	1:10 000	
	Onslow	1:12 500	

180 AUSTRALIA - Product - Amendment to Australian National Tide Tables 2021

Australian Hydrographic Office

ANTT 2021

Page 352	
<i>Amend</i>	ALBANY To Chart Datum AUS 118 NE 19 FEB 2021 0.0
<i>Delete</i>	ALBANY To Chart Datum AUS 109 NC 14 NOV 2003 0.0
Page 353	
<i>Amend</i>	CAIRNS Correction to Chart Datum ENC AU5262X4 to AU5CNS01
Page 359	
<i>Delete</i>	SEEADLER HARBOUR To Chart Datum AUS 391 NC 04 NOV 2011 0.0
<i>Insert</i>	SEEADLER HARBOUR To Chart Datum PNG 391 NC 19 FEB 2021 0.0

181 PAPUA NEW GUINEA - Product - Amendment to Papua New Guinea National Tide Tables 2021

Australian Hydrographic Office

PNGNTT 2021

Page 103	
<i>Delete</i>	SEEADLER HARBOUR To Chart Datum AUS 391 NC 04 NOV 2011 0.0
<i>Insert</i>	SEEADLER HARBOUR To Chart Datum PNG 391 NC 19 FEB 2021 0.0

182 AUSTRALIA - QUEENSLAND - Airlie Beach - Muddy Bay - Light buoy; wreck

Maritime Safety Queensland

Aus 269 (Airlie Beach) [812/2019]

<i>Delete</i>	light buoy	20° 15'.95 S	148° 43'.38 E
	wreck	20° 15'.97 S	148° 43'.38 E

183 AUSTRALIA - QUEENSLAND - Great Sandy Strait - Tin Can Inlet - Light buoy

Maritime Safety Queensland

Aus 240 [142/2021]

<i>Replace</i>	light beacon with port lateral cylindrical light buoy, <i>Fl.R.2-5s</i> , with topmark	25° 50'.1 S	153° 02'.0 E
----------------	--	-------------	--------------

184 AUSTRALIA - QUEENSLAND - Great Sandy Strait - Poona Point - Marine farm
Maritime Safety Queensland Notice 61/2021

Aus 240 [183/2021]

Insert	dashed line and marine farm symbol with legend, (<i>see Note</i>), between	25° 42'.20 S	152° 55'.42 E
		25° 42'.08 S	152° 55'.65 E
		25° 41'.63 S	152° 55'.37 E
		25° 41'.79 S	152° 55'.14 E
		25° 42'.20 S	152° 55'.42 E

185 PAPUA NEW GUINEA - Saibai Island - Depth
HMAS *Paluma*

Aus 841 [5/2021]

Insert	depth, 4 ₃ m, enclosed by contour	9° 25'.04 S	142° 34'.88 E
--------	--	-------------	---------------

186 AUSTRALIA - NORTHERN TERRITORY - Darwin - Chart withdrawn; chart limits; chart notes; ZOC diagrams; nav aids; anchoring prohibited limit; tidal streams table
Australian Hydrographic Office

Note: position of existing chart notes may vary on certain charts.

Aus 25 [96/2021]

Insert	accompanying chart note, ELECTRONIC NAVIGATIONAL CHART (ENC)	12° 26'.7 S	130° 55'.4 E
	magenta legend, <i>ENC (see Note)</i> , centred on	12° 27'.6 S	130° 48'.5 E
	yellow lit mooring buoy, <i>Iso. Y.2s</i>	12° 27'.92 S	130° 49'.79 E
	tidal stream data, desig A	12° 28'.1 S	130° 51'.2 E
	tidal stream data, desig B	12° 28'.28 S	130° 48'.35 E
	accompanying block	12° 28'.2 S	130° 40'.0 E
	accompanying ZOC diagram	12° 28'.4 S	130° 42'.5 E
Replace	tidal stream data, desig B, with tidal stream data, desig D	12° 21'.2 S	130° 43'.8 E
	tidal stream data, desig A, with tidal stream data, desig C	12° 25'.7 S	130° 46'.9 E
Delete	chart note, OMISSIONS FROM CHART	12° 25'.5 S	130° 55'.4 E
	magenta limits with legend, Aus 24, centred on	12° 27'.6 S	130° 50'.0 E
	magenta limits with legend, Aus 28, centred on	12° 28'.4 S	130° 54'.0 E

Aus 26 [7/2021]

Insert	yellow lit mooring buoy, <i>Iso. Y.2s</i>	12° 27'.92 S	130° 49'.79 E
	tidal stream data, desig A	12° 28'.1 S	130° 51'.2 E
	magenta legend, <i>ENC (see Note)</i> , centred on	12° 28'.25 S	130° 48'.90 E
	tidal stream data, desig C	12° 28'.28 S	130° 48'.35 E
	port lateral light beacon, <i>Fl.R.3s</i> , with topmark	12° 30'.148 S	130° 55'.689 E
	accompanying chart note, ELECTRONIC NAVIGATIONAL CHART (ENC)	12° 30'.5 S	130° 58'.0 E
	tidal stream data, desig B	12° 30'.8 S	130° 49'.7 E
	accompanying ZOC diagram	12° 35'.0 S	130° 58'.7 E
	accompanying block	12° 37'.2 S	130° 42'.6 E
Replace	restricted area limit with anchoring prohibited limit, centred on	12° 33'.51 S	130° 51'.64 E
Delete	magenta limits with legend, Aus 24, centred on	12° 29'.0 S	130° 50'.0 E
	chart note, OMISSIONS FROM CHART	12° 29'.3 S	130° 58'.0 E
	magenta limits with legend, Aus 28, centred on	12° 29'.5 S	130° 54'.0 E
	magenta limits with legend, Aus 27, centred on	12° 32'.5 S	130° 51'.0 E

187 AUSTRALIA - NORTHERN TERRITORY - Port Patterson - Chart withdrawn; chart limits; chart note
Australian Hydrographic Office

Note: position of existing chart notes may vary on certain charts.

Aus 25 [186/2021]

Delete	magenta legend, Adjoining Chart Aus 29, in W border	12° 19'.5 S	130° 36'.2 E
--------	---	-------------	--------------

Aus 724 [538/2020]

Delete	magenta limits, with legend Aus 29, centred on	12° 40'.0 S	130° 23'.8 E
	chart note, OMISSIONS FROM CHART	13° 40'.7 S	130° 15'.0 E

188 AUSTRALIA - WESTERN AUSTRALIA - Mullaloo - Buoys
Department of Transport WA

Aus 754 [20/2020]

Move	buoy	31° 47'.0 S	115° 43'.1 E
	to	31° 46'.30 S	115° 43'.45 E
	buoy	31° 47'.6 S	115° 43'.3 E
	to	31° 47'.24 S	115° 43'.46 E
Delete	depth, 7m	31° 47'.1 S	115° 43'.4 E

189 AUSTRALIA - WESTERN AUSTRALIA - Wedge Island to Lancelin - Chart withdrawn; chart limits; chart note
Australian Hydrographic Office

Note: position of existing chart notes may vary on certain charts.

Aus 753 [1315/2019]

Insert	accompanying chart note, ELECTRONIC NAVIGATIONAL CHART (ENC)	30° 03'.5 S	115° 17'.5 E
	magenta legend, <i>ENC</i> (see <i>Note</i>), centred on	30° 59'.0 S	115° 10'.0 E
Delete	magenta limits with legend, Aus 105, centred on	30° 55'.0 S	115° 10'.0 E

Aus 754 [188/2021]

Insert	magenta legend, <i>ENC</i> (see <i>Note</i>), centred on	31° 02'.7 S	115° 06'.5 E
	accompanying chart note, ELECTRONIC NAVIGATIONAL CHART (ENC)	31° 16'.8 S	115° 47'.0 E
Delete	magenta limits with legend, Aus 105, centred on	31° 02'.0 S	115° 10'.0 E

190 AUSTRALIA - WESTERN AUSTRALIA - Wyndham - Nav aids
CGL Wyndham Port

Aus 32 (Approaches to Wyndham Wharf) [196/2020]

Amend	lit raft to <i>Fl.G.3s No11 Raft</i>	15° 23'.64 S	128° 06'.40 E
	lit raft to <i>Fl.G.3s Raft</i>	15° 27'.10 S	128° 05'.60 E
Delete	light beacon	15° 16'.12 S	128° 05'.45 E

Aus 32 (Wyndham Wharf) [196/2020]

Amend	lit raft to <i>Fl.G.3s Turning Buoy Raft</i>	15° 27'.10 S	128° 05'.60 E
-------	--	--------------	---------------

191 AUSTRALIA - SOUTH AUSTRALIA - Coffin Bay to Cape Nelson - Chart withdrawn; chart limits; chart note; ZOC diagram

Australian Hydrographic Office

Note: position of existing chart notes may vary on certain charts.

Aus 348 [23/2020]

Insert	accompanying block A	37° 32'.3 S	140° 03'.0 E
	accompanying chart note, ELECTRONIC NAVIGATIONAL CHART (ENC)	37° 49'.0 S	140° 32'.0 E
	accompanying block B	38° 04'.0 S	140° 52'.0 E
	accompanying ZOC diagram	38° 48'.0 S	138° 50'.0 E

Aus 348 [23/2020]

Delete	plan, PORT MACDONNELL	38° 04'.0 S	140° 42'.5 E
--------	-----------------------	-------------	--------------

Aus 485 [47/2021]

Delete	magenta limits with legend, Aus 121, centred on	32° 44'.1 S	136° 23'.7 E
	magenta limits with legend, Aus 127, centred on	32° 50'.9 S	136° 43'.3 E
	magenta limits with legend, Aus 121, centred on	34° 27'.7 S	135° 21'.8 E
	magenta limits with legend, Aus 127, centred on	35° 35'.0 S	138° 38'.0 E

192 AUSTRALIA - VICTORIA - Port Phillip - Indented Head - Light buoy

Former Notice - 129(T)/2021 is cancelled

Parks Victoria Notice 51/2021

Aus 157 [101/2021]

Move	light buoy	38° 09'.05 S	144° 43'.39 E
	to	38° 09'.091 S	144° 43'.424 E

193 AUSTRALIA - VICTORIA - Western Port - Chart withdrawn; chart limits; chart notes; ZOC diagram

Australian Hydrographic Office

Note: position of existing chart notes may vary on certain charts.

Aus 151 [547/2020]

Insert	accompanying ZOC diagram	38° 22'.5 S	145° 03'.3 E
	accompanying chart note, ELECTRONIC NAVIGATIONAL CHART (ENC)	38° 23'.2 S	145° 05'.7 E
	magenta legend, <i>ENC</i> (see <i>Note</i>), centred on	38° 24'.4 S	145° 14'.8 E
Delete	magenta limits, with legend Aus 152, centred on	38° 14'.5 S	145° 18'.0 E
	magenta limits, with legend Aus 152, centred on	38° 18'.7 S	145° 13'.3 E
	magenta limits, with legend Aus 152, centred on	38° 21'.2 S	145° 13'.7 E
	chart note, OMISSIONS FROM CHART	38° 22'.1 S	145° 05'.7 E
	magenta limits, with legend Aus 152, centred on	38° 22'.7 S	145° 13'.0 E

Aus 151 (Continuation of Western Port) [547/2020]

Delete	magenta limits, with legend Aus 152, centred on	38° 14'.3 S	145° 18'.6 E
--------	---	-------------	--------------

194 AUSTRALIA - TASMANIA - Georges Bay - Lords Point - Light buoy

Former Notice - 176(T)/2021 is cancelled

Marine and Safety Tasmania Notice M59(T)/2021

Aus 169 (Georges Bay) [955/2020]

Replace	beacon with starboard conical buoy, No5, with topmark	41° 17'.86 S	148° 19'.07 E
---------	---	--------------	---------------

195 AUSTRALIA - TASMANIA - Great Oyster Bay - Fish aggregating device

Marine and Safety Tasmania Notice M60(T)/2020

Aus 766 [200/2020]

Insert	out of position special conical light buoy, Fl.Y.3s FAD (Oct - Apr), without topmark	42° 10'.40 S	148° 10'.72 E
--------	--	--------------	---------------

196(T)/2021 AUSTRALIA - NEW SOUTH WALES - Botany Bay - Molineux Point - Navaid replacement works
Port Authority of New South Wales Notice 7/2021

Navaid replacement works are in progress at the following light beacons:

<i>Position</i>	<i>Characteristic</i>
33° 59'.18 S 151° 12'.81 E	<i>Fl.G.3s No1</i>
33° 59'.07 S 151° 12'.67 E	<i>Fl.G.3s No3</i>
33° 58'.94 S 151° 12'.50 E	<i>Fl.G.3s No5.</i>

Barges and a support vessels are on site.

Mariners must keep well clear of the works and are advised to navigate with caution in the area.

Chart temporarily affected - Aus 198

197(T)/2021 AUSTRALIA - QUEENSLAND - Moreton Bay - Peel Island - Wreck
Maritime Safety Queensland , G Luck

A wreck exists in position 27° 30'.30 S 153° 19'.33 E.

Mariners are advised to navigate with caution in the area.

Chart temporarily affected - Aus 236

198(T)/2021 AUSTRALIA - QUEENSLAND - Moreton Bay - Rous Channel - Light buoys repositioned; nav aids established

Former Notice - 922(T)/2020 is cancelled

Maritime Safety Queensland Notice 326(T)/2020, 381(T)/2020, 47(T)/2021

The following light buoys have been temporarily repositioned:

<i>Characteristic</i>	<i>Charted Position</i>	<i>New Position</i>
<i>Fl.G.2-5s No1</i>	27° 22'.79 S 153° 26'.01 E	27° 22'.88 S 153° 26'.05 E
<i>Q No2</i>	27° 23'.32 S 153° 26'.05 E	27° 22'.99 S 153° 26'.07 E
<i>Fl.G.6s No5</i>	27° 23'.09 S 153° 24'.94 E	27° 23'.31 S 153° 25'.08 E
<i>Fl.G.2-5s No11</i>	27° 23'.96 S 153° 23'.42 E	27° 23'.79 S 153° 23'.35 E
<i>Fl.G.6s No13</i>	27° 24'.48 S 153° 22'.03 E	27° 24'.34 S 153° 22'.36 E

The following nav aids have been temporarily established:

<i>Position</i>	<i>Remarks</i>
27° 23'.87 S 153° 24'.03 E	port lateral cylindrical light buoy, <i>Fl.R.2-5s No20</i>
27° 23'.75 S 153° 24'.18 E	starboard lateral conical light buoy, <i>Fl.G.2-5s No21</i>
27° 23'.62 S 153° 24'.71 E	starboard lateral conical buoy, <i>No19</i>
27° 23'.60 S 153° 25'.00 E	port lateral cylindrical light buoy, <i>Fl.R.2-5s No18</i>

Mariners are advised to navigate with caution in the area.

Chart temporarily affected - Aus 236

199(T)/2021 AUSTRALIA - QUEENSLAND - Noosa Head - Scientific instrument recovered

Former Notice - 278(T)/2019 is cancelled

Maritime Safety Queensland

Cancel this notice on receipt.

Chart formerly affected - Aus 815

200(T)/2021 AUSTRALIA - QUEENSLAND - Port Alma - Sea Reach - Light buoy relit

Former Notice - 158(T)/2021 is cancelled

Maritime Safety Queensland

Cancel this notice on receipt.

Chart formerly affected - Aus 247 - Aus 265

201(T)/2021 PAPUA NEW GUINEA - Saibai Island - Shoaling*Former Notice - 75(T)/2021 is cancelled**HMAS Mermaid , HMAS Paluma*

Latest survey indicates shoaler depths than those charted exist in an area bounded by the following positions:

9° 20'.66 S 142° 36'.94 E
 9° 20'.14 S 142° 39'.81 E
 9° 20'.12 S 142° 43'.90 E
 9° 20'.94 S 142° 44'.07 E
 9° 21'.01 S 142° 40'.60 E
 9° 21'.80 S 142° 37'.67 E
 9° 22'.74 S 142° 37'.04 E
 9° 22'.72 S 142° 35'.37 E
 9° 22'.46 S 142° 34'.10 E
 9° 21'.74 S 142° 34'.60 E.

Mariners are advised to navigate with caution in the area.

Charts will be updated in due course.

Chart temporarily affected - Aus 840 - Aus 841

202(T)/2021 AUSTRALIA - NORTHERN TERRITORY - Darwin - Chart withdrawn*Former Notice - 168(T)/2021 is cancelled**Northern Territory Government Notice 8(T)/2021*

Cancel this notice on receipt.

Chart formerly affected - Aus 24

203(T)/2021 AUSTRALIA - NORTHERN TERRITORY - Darwin - Frances Bay - Wreck*Department of Infrastructure, Planning and Logistics NT Notice 6(T)/2021*

A stranded wreck marked by a special light buoy, *Fl. Y. 3s* exists in position 12° 28'.24 S 130° 51'.37 E.

Chart temporarily affected - Aus 25 - Aus 26

204(T)/2021 AUSTRALIA - NORTHERN TERRITORY - Darwin - Frances Bay - Wreck*Former Notice - 167(T)/2021 is cancelled**Department of Infrastructure, Planning and Logistics NT Notice 6(T)/2021*

Cancel this notice on receipt.

Chart formerly affected - Aus 24 - Aus 25 - Aus 26 - Aus 28

205(T)/2021 AUSTRALIA - NORTHERN TERRITORY - Darwin - Fort Point - Harbour works*Department of Infrastructure, Planning and Logistics NT Notice 75(T)/2020*

Harbour works associated with the enhancement of the Fort Hill Wharf (12° 28'.33 S 130° 50'.76 E) and the western mooring dolphin (12° 28'.37 S 130° 50'.66 E) are in progress.

Scaffolding marked by special light beacons, *Fl. Y. 4s*, exists in the area.

A 20m restricted area exists for all vessels except those under the control of the Darwin Port and Northern Territory Police.

Mariners are advised to navigate with caution in the area.

Chart temporarily affected - Aus 25 - Aus 26

206(T)/2021 AUSTRALIA - NORTHERN TERRITORY - Darwin - Fort Point - Harbour works*Former Notice - 1009(T)/2020 is cancelled*

Department of Infrastructure, Planning and Logistics NT Notice 75(T)/2020

Cancel this notice on receipt.

Chart formerly affected - Aus 24 - Aus 25 - Aus 26 - Aus 28**207(T)/2021 AUSTRALIA - NORTHERN TERRITORY - Darwin - Elizabeth River - Survey operations**

Department of Infrastructure, Planning and Logistics NT Notice 15(T)/2021

MV *Moresby*, towing a 100m streamer, will be conducting a geophysical survey in the vicinity of Preston Point (12° 30'.60 S 130° 53'.75 E) and Elizabeth River between points:

12° 30'.20 S 130° 54'.20 E

12° 30'.25 S 130° 55'.67 E

12° 31'.92 S 130° 56'.42 E

12° 32'.05 S 130° 57'.30 E.

The vessel will display appropriate shapes and monitor VHF Ch 10 and Ch 16.

Mariners are advised to navigate with caution in the area. 50m clearance requested.

Chart temporarily affected - Aus 26**208(T)/2021 AUSTRALIA - NORTHERN TERRITORY - Darwin - Elizabeth River - Survey operations***Former Notice - 169(T)/2021 is cancelled*

Department of Infrastructure, Planning and Logistics NT Notice 15(T)/2021

Cancel this notice on receipt.

Chart formerly affected - Aus 26 - Aus 28**209(T)/2021 AUSTRALIA - NORTHERN TERRITORY - Darwin - South Shell Island - Scientific instrument**

Department of Infrastructure, Planning and Logistics NT Notice 18(T)/2021

A subsurface scientific instrument exists in position 12° 29'.85 S 130° 53'.16 E.

Chart temporarily affected - Aus 26**210(T)/2021 AUSTRALIA - NORTHERN TERRITORY - Darwin - South Shell Island - Scientific instrument***Former Notice - 873(T)/2020 is cancelled*

Department of Infrastructure, Planning and Logistics NT Notice 57(T)/2020

Cancel this notice on receipt.

Chart formerly affected - Aus 26 - Aus 28**211(T)/2021 AUSTRALIA - NORTHERN TERRITORY - Darwin - East Arm - Scientific instruments**

Department of Infrastructure, Planning and Logistics NT Notice 21(T)/2019

Special light buoys, *Fl(5)20s*, exist in positions 12° 30'.22 S 130° 54'.24 E and 12° 30'.20 S 130° 54'.20 E.**Chart temporarily affected - Aus 26****212(T)/2021 AUSTRALIA - NORTHERN TERRITORY - Darwin - East Arm - Scientific instruments***Former Notice - 397(T)/2019 is cancelled*

Department of Infrastructure, Planning and Logistics NT Notice 21(T)/2019

Cancel this notice on receipt.

Chart formerly affected - Aus 26 - Aus 28

213(T)/2021 AUSTRALIA - NORTHERN TERRITORY - Darwin - Middle Ground - Light buoy off station

Department of Infrastructure, Planning and Logistics NT Notice 32(T)/2020

The special light buoy, Q.Y (12° 23'.39 S 130° 46'.28 E), is off station.

Chart temporarily affected - Aus 25

214(T)/2021 AUSTRALIA - NORTHERN TERRITORY - Darwin - Middle Ground - Light buoy off station

Former Notice - 635(T)/2020 is cancelled

Department of Infrastructure, Planning and Logistics NT Notice 32(T)/2020

Cancel this notice on receipt.

Chart formerly affected - Aus 25 - Aus 29

215(T)/2021 AUSTRALIA - NORTHERN TERRITORY - Darwin Naval Base - Harbour works; exclusion zone

Department of Infrastructure, Planning and Logistics NT Notice 63/2020

Harbour works associated with wharf redevelopment are in progress in an area bounded by the coast and the following:

<i>Position</i>	<i>Remarks</i>
12° 27'.49 S 130° 49'.05 E	
12° 27'.52 S 130° 48'.98 E	special light buoy, <i>Fl. Y</i>
12° 27'.56 S 130° 48'.95 E	special light buoy, <i>Fl. Y</i>
12° 27'.61 S 130° 48'.92 E	special light buoy, <i>Fl. Y</i>
12° 27'.68 S 130° 48'.96 E	special light buoy, <i>Fl. Y</i>
12° 27'.85 S 130° 49'.25 E	special light buoy, <i>Fl. Y</i>
12° 27'.80 S 130° 49'.27 E	special light buoy, <i>Fl. Y</i>
12° 27'.76 S 130° 49'.30 E	special light buoy, <i>Fl. Y</i>
12° 27'.73 S 130° 49'.32 E.	

An exclusion zone exists in the area and only authorised vessels are permitted to enter.

Mariners are advised to keep well clear and to navigate with caution in the area.

Chart temporarily affected - Aus 25 - Aus 26

216(T)/2021 AUSTRALIA - NORTHERN TERRITORY - Darwin Naval Base - Harbour works; exclusion zone

Former Notice - 927(T)/2020 is cancelled

Department of Infrastructure, Planning and Logistics NT Notice 63/2020

Cancel this notice on receipt.

Chart formerly affected - Aus 24 - Aus 25 - Aus 26

217(T)/2021 AUSTRALIA - WESTERN AUSTRALIA - Glomar Shoal - Survey operations northwestwards

Santos

MV *Vigilant* and a ROV are conducting an inspection survey in an area bounded by the following positions:

19° 10'.9 S 116° 34'.0 E
 19° 10'.9 S 116° 48'.3 E
 19° 22'.4 S 116° 48'.3 E
 19° 22'.4 S 116° 34'.0 E.

Mariners are advised to navigate with caution in the area.

Chart temporarily affected - Aus 327

218(T)/2021 AUSTRALIA - WESTERN AUSTRALIA - North West Cape - FPSO restored northwards

Former Notice - 356(T)/2020 is cancelled

Santos

Cancel this notice on receipt.

Chart formerly affected - Aus 328 - Aus 329 - Aus 744 - Aus 4723 (INT 723) - Aus 4725 (INT 725)

219(T)/2021 AUSTRALIA - SOUTH AUSTRALIA - Cape Jaffa - Marina closure; chart withdrawn*Former Notice - 919(T)/2019 is cancelled*

Department of Planning, Transport and Infrastructure SA Notice 30/2019

Cancel this notice on receipt.

Chart formerly affected - Aus 127**220(T)/2021 AUSTRALIA - SOUTH AUSTRALIA - Port Bonython - Light buoy unlit**

Department for Infrastructure and Transport SA Notice 4(T)/2021

The port lateral light buoy, *Fl.R.3s No10* (33° 01'.19 S 137° 45'.67 E), is unlit.**Chart temporarily affected - Aus 135 - Aus 136 - Aus 778****221(T)/2021 AUSTRALIA - VICTORIA - Western Port - Hanns Inlet - Light beacons unlit**

HMAS Cerberus

The light beacons, *Fl.G.8s* (38° 23'.26 S 145° 13'.95 E) and *Fl.R.8s* (38° 23'.30 S 145° 13'.94 E) are unlit.**Chart temporarily affected - Aus 150 - Aus 151****222(T)/2021 AUSTRALIA - VICTORIA - Western Port - Hanns Inlet - Light beacons unlit***Former Notice - 764(T)/2017 is cancelled*

HMAS Cerberus

Cancel this notice on receipt.

Chart formerly affected - Aus 150 - Aus 151 - Aus 152**223(T)/2021 AUSTRALIA - VICTORIA - Western Port - Stony Point to Sandy Point - Shoaling**

Victorian Regional Channels Authority Notice 199/2019

Shoaling exists in the vicinity of the following positions:

<i>Position</i>	<i>Least depth</i>	<i>Remarks</i>
38°25'.5 S 145° 13'.8 E	13.6m	Extending up to 100m into shipping channel
38°22'.8 S 145° 14'.7 E	13.2m	Extending up to 50m into shipping channel
38°21'.9 S 145° 14'.4 E	13.5m	Extending up to 40m into shipping channel
38°22'.1 S 145° 14'.3 E	13.8m	Extending up to 10m into shipping channel

Mariners are advised to navigate with caution in the area.

Chart temporarily affected - Aus 150 - Aus 151**224(T)/2021 AUSTRALIA - VICTORIA - Western Port - Stony Point to Sandy Point - Shoaling***Former Notice - 988(T)/2019 is cancelled*

Victorian Regional Channels Authority Notice 199/2019

Cancel this notice on receipt.

Chart formerly affected - Aus 150 - Aus 151 - Aus 152

225(T)/2021 AUSTRALIA - TASMANIA - Bass Strait - King Island - Survey operations; scientific instruments

Former Notice - 87(T)/2021 is cancelled

EGS Survey Pty Ltd

Vessel *Pacific Crest* is conducting survey operations in an area bounded by the following positions:

39° 45'.0 S 143° 40'.0 E

39° 45'.0 S 144° 30'.0 E

39° 12'.0 S 144° 30'.0 E

39° 12'.0 S 143° 40'.0 E.

Tide gauges, marked by special light buoys, *Fl. Y.2s*, exist in the following positions:

39° 11'.8 S 143° 40'.2 E

39° 13'.4 S 144° 28'.6 E

39° 32'.0 S 144° 00'.9 E

39° 34'.6 S 143° 39'.6 E

39° 34'.7 S 143° 55'.7 E

39° 36'.6 S 144° 26'.5 E

39° 39'.5 S 144° 07'.1 E

39° 40'.8 S 143° 51'.9 E

39° 55'.6 S 143° 49'.2 E

43° 07'.1 S 147° 40'.8 E.

Mariners are advised to navigate with caution in the area.

Chart temporarily affected - Aus 171 - Aus 349 - Aus 789 - Aus 796

226(T)/2021 AUSTRALIA - TASMANIA - River Derwent - Lindisfarne Bay - Beacon restored

Former Notice - 131(T)/2021 is cancelled

Marine and Safety Tasmania Notice M56(T)/2021

Cancel this notice on receipt.

Chart formerly affected - Aus 172

II

HYDROGRAPHIC REPORTS

NIL

To accompany Australian Notice to Mariners 186/2021

ELECTRONIC NAVIGATIONAL CHART (ENC)
Larger scale ENC content exists in this area.
When using electronic navigation systems,
certain vessels (e.g. restricted by depth or
size) may benefit from the additional level of
detail shown in the largest scale ENC
product available.

Note for chart Aus 25

To accompany Australian Notice to Mariners 189/2021

ELECTRONIC NAVIGATIONAL CHART (ENC)
Larger scale ENC content exists in this area.
When using electronic navigation systems,
certain vessels (e.g. restricted by depth or
size) may benefit from the additional level of
detail shown in the largest scale ENC
product available.

Note for chart Aus 753

To accompany Australian Notice to Mariners 191/2021

ELECTRONIC NAVIGATIONAL CHART (ENC)
Larger scale ENC content exists in this area.
When using electronic navigation systems,
certain vessels (e.g. restricted by depth or
size) may benefit from the additional level of
detail shown in the largest scale ENC
product available.

Note for chart Aus 348

To accompany Australian Notice to Mariners 186/2021

ELECTRONIC NAVIGATIONAL CHART (ENC)
Larger scale ENC content exists in this area.
When using electronic navigation systems,
certain vessels (e.g. restricted by depth or
size) may benefit from the additional level of
detail shown in the largest scale ENC
product available.

Note for chart Aus 26

To accompany Australian Notice to Mariners 189/2021

ELECTRONIC NAVIGATIONAL CHART (ENC)
Larger scale ENC content exists in this area.
When using electronic navigation systems,
certain vessels (e.g. restricted by depth or
size) may benefit from the additional level of
detail shown in the largest scale ENC
product available.


Note for chart Aus 754

To accompany Australian Notice to Mariners 193/2021

ELECTRONIC NAVIGATIONAL CHART (ENC)
Larger scale ENC content exists in this area.
When using electronic navigation systems,
certain vessels (e.g. restricted by depth or
size) may benefit from the additional level of
detail shown in the largest scale ENC
product available.

Note for chart Aus 151

To accompany Australian Notice to Mariners 186/2021



Tidal streams referred to HW at DARWIN

Hours	Geographical Position	A 12°28.1' S 130 51.2 E	B 12°28.3' S 130 48.3 E	C 12°25.7' S 130 46.9 E	D 12°21.2' S 130 43.8 E	
Before High Water (6 5 4 3 2 1)	Directions of streams (degrees) Rates at spring tides (knots) Rates at neap tides (knots)	- 6	057 0.3 0.1	138 0.8 0.3	335 0.5 0.2	290 0.6 0.3
		- 5	048 0.6 0.3	147 1.5 0.6	169 0.6 0.3	175 0.4 0.2
		- 4	044 0.8 0.3	153 1.9 0.8	160 1.9 0.8	153 1.3 0.5
		- 3	039 0.8 0.3	153 1.6 0.7	161 3.0 1.2	134 1.6 0.7
		- 2	033 0.6 0.2	150 0.7 0.3	155 2.6 1.1	131 1.5 0.6
		- 1	010 0.2 0.1	333 0.3 0.1	140 1.5 0.6	129 1.3 0.5
0		236 0.3 0.1	330 1.4 0.6	136 0.4 0.2	126 0.8 0.3	
After High Water (1 2 3 4 5 6)	+1	226 0.7 0.3	327 2.1 0.9	340 0.9 0.4	343 0.3 0.1	
	+2	224 1.0 0.4	323 1.8 0.8	332 2.7 1.1	328 1.3 0.5	
	+3	222 0.9 0.4	326 1.2 0.5	334 3.2 1.3	324 1.7 0.7	
	+4	218 0.6 0.2	333 0.6 0.2	337 2.5 1.1	313 1.5 0.6	
	+5	219 0.2 0.1	109 0.2 0.1	343 1.7 0.7	310 1.3 0.5	
	+6	070 0.2 0.1	139 0.8 0.3	331 0.7 0.3	299 0.8 0.3	

Tidal Levels referred to Datum of Soundings

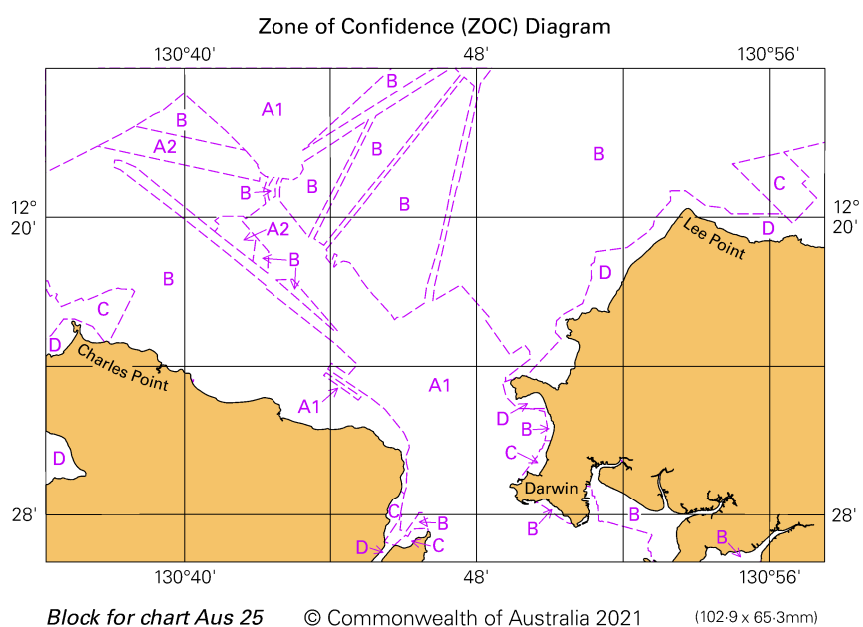
Place	Lat S	Long E	Heights in metres above datum					
			HAT	MHWS	MHWN	MSL	MLWN	MLWS
Darwin	12° 28'	130° 51'	8.1	7.0	5.1	4.2	3.3	1.4
Nightcliff	12 23	130 50	7.5	6.6	4.9	3.9	3.0	1.3
Tapa Bay	12 27	130 36	7.1	6.2	4.6	3.8	2.9	1.3

Block for chart Aus 25

© Commonwealth of Australia 2021

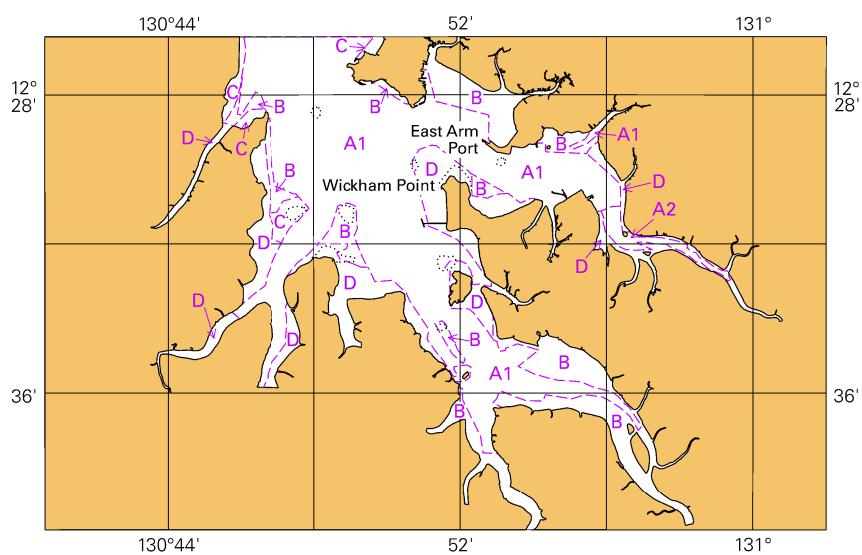
(153.5 x 85.2mm)

To accompany Australian Notice to Mariners 186/2021



To accompany Australian Notice to Mariners 186/2021

Zone of Confidence (ZOC) Diagram

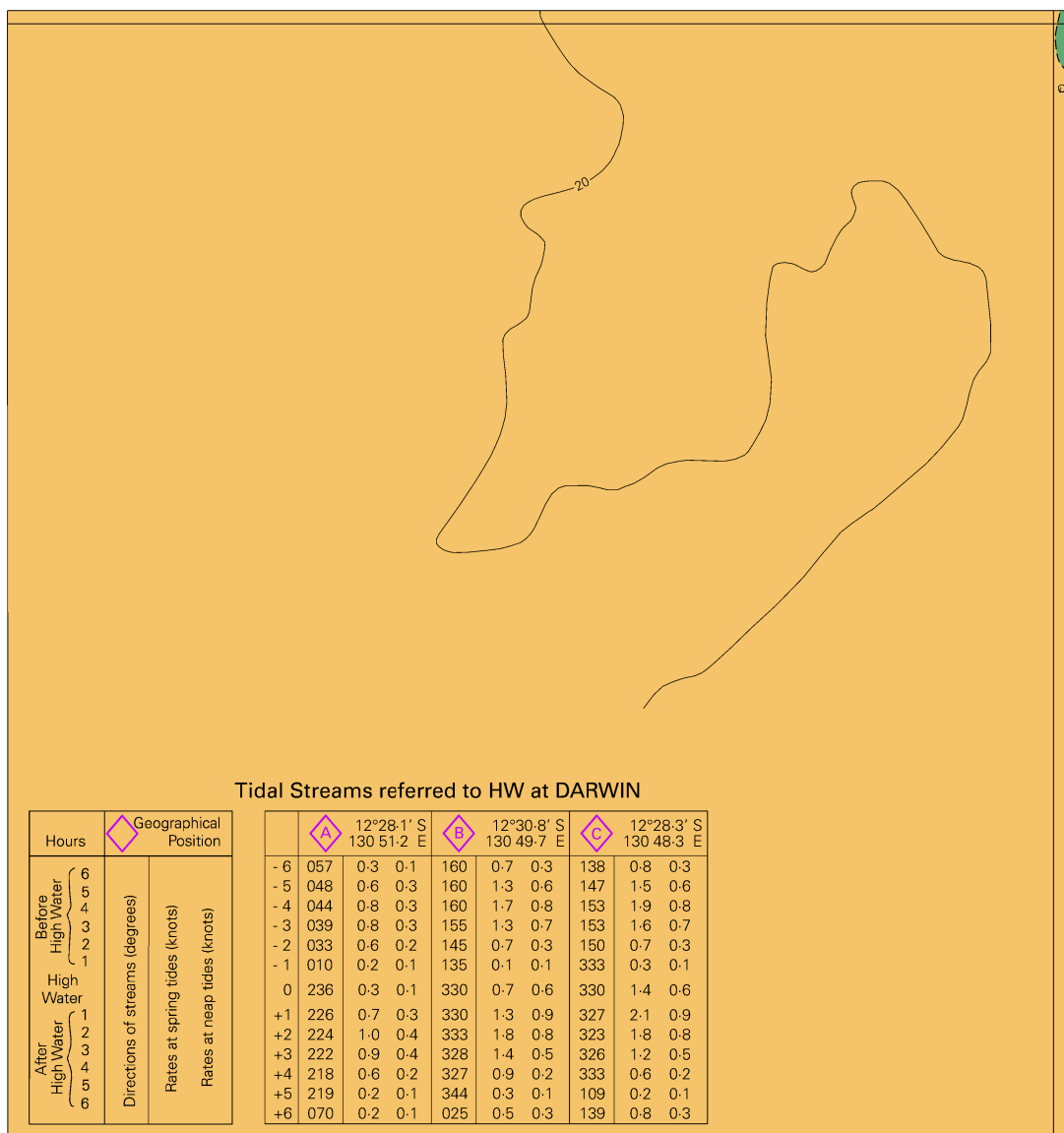


Block for chart Aus 26

© Commonwealth of Australia 2021

(103-2x 65-2mm)

To accompany Australian Notice to Mariners 186/2021

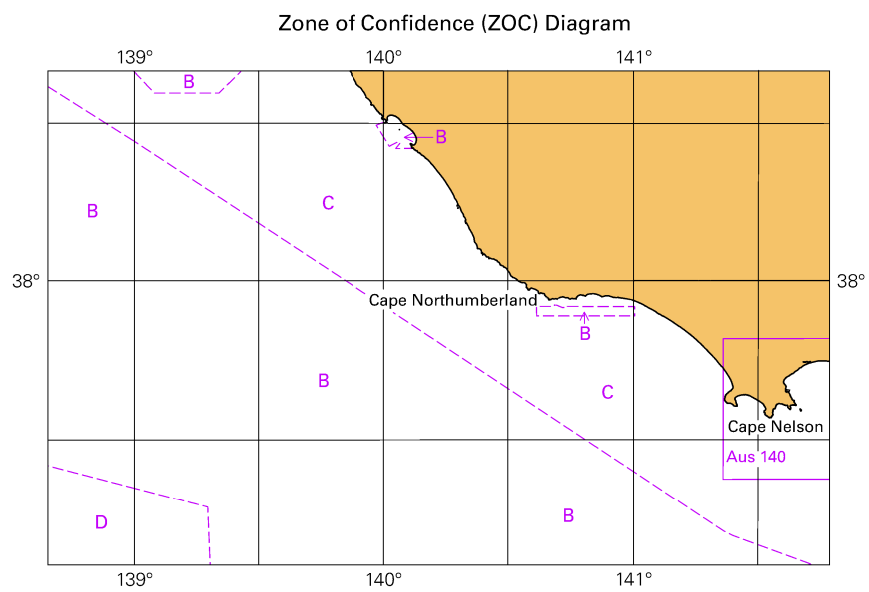


Block for chart Aus 26

© Commonwealth of Australia 2021

(143.2 x 151.6mm)

To accompany Australian Notice to Mariners 191/2021

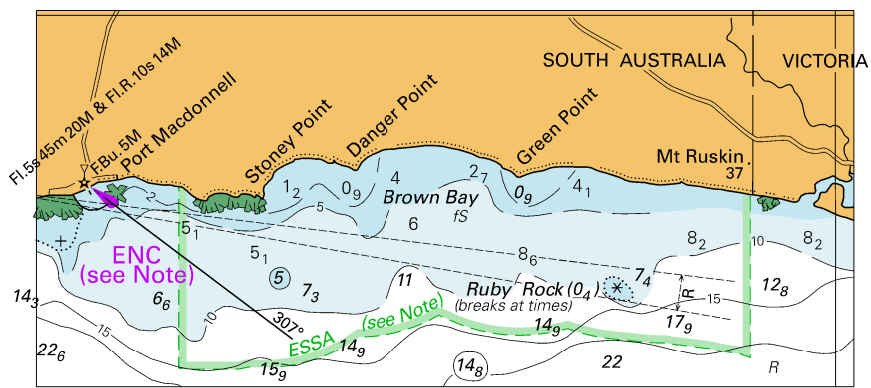


Block for chart 348

© Commonwealth of Australia 2021

(103.3 x 65.3mm)

To accompany Australian Notice to Mariners 191/2021

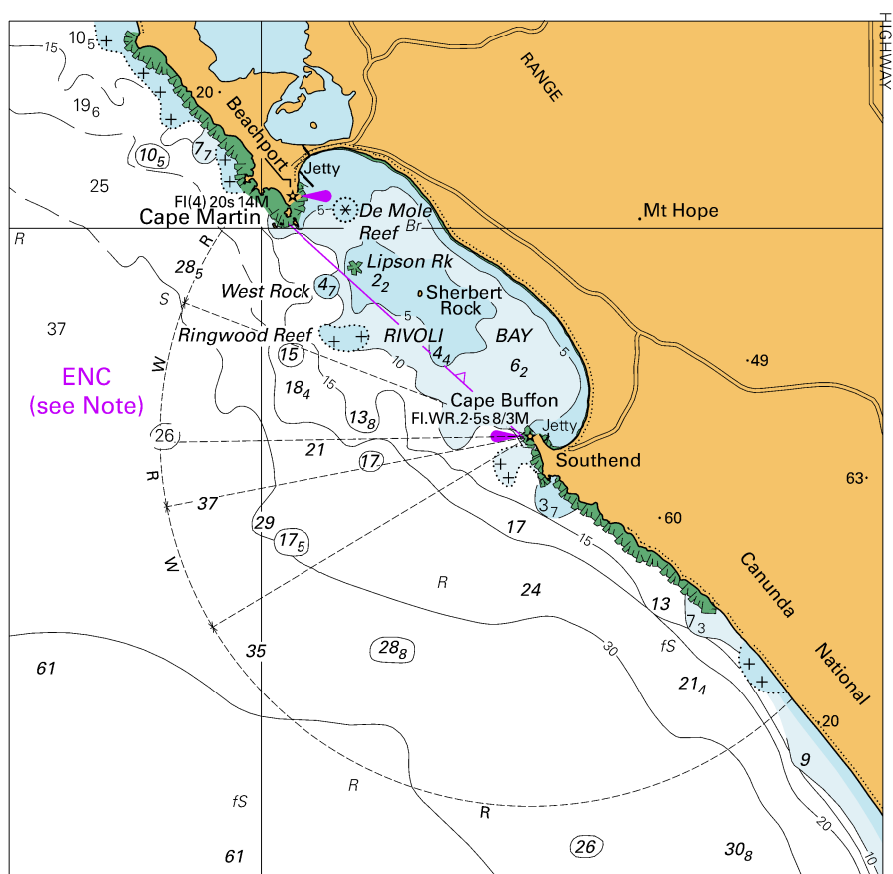


© Commonwealth of Australia 2021

Block B for chart Aus 348

(108.1 x 49.8mm)

To accompany Australian Notice to Mariners 191/2021

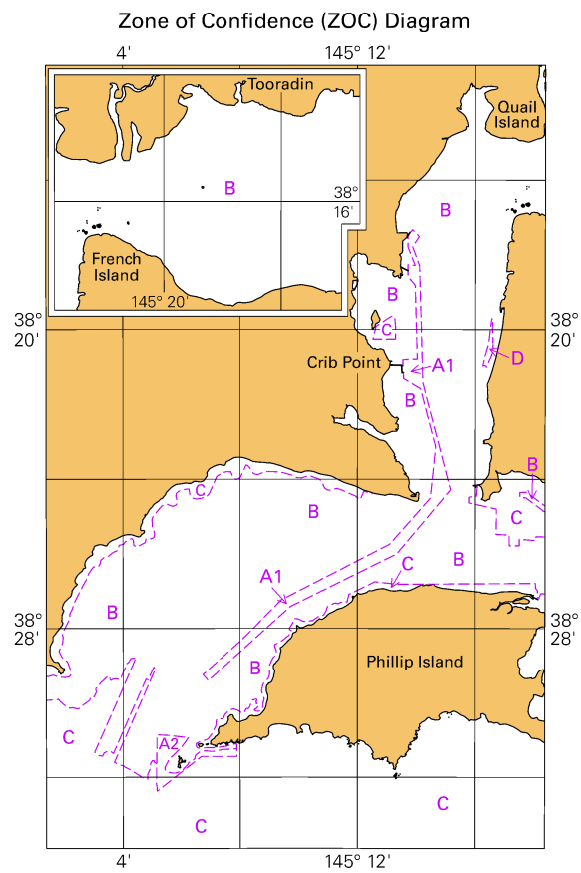


Block A for chart Aus 348

© Commonwealth of Australia 2021

(115.5 x 113.4mm)

To accompany Australian Notice to Mariners 193/2021



Block for chart Aus 151

(66.0 x 103.6mm)

© Commonwealth of Australia 2021