



19 February 2021

Edition 4

# AUSTRALIAN NOTICES TO MARINERS

## Notices 132 - 177

Published fortnightly by the Australian Hydrographic Office



Australian Notices to Mariners are the authority for correcting charts and publications published by the Australian Hydrographic Office covering Australia, Papua New Guinea, Solomon Islands, Australian Antarctic Territory and Timor-Leste.

Commodore S.T. DUNNE RAN  
*Hydrographer of Australia*

---

### SECTIONS.

- I. Australian Notices to Mariners, including blocks and notes.
- II. Hydrographic Reports.

### SUPPLEMENTS.

- I. Tracings
- II. Cumulative List of Australian Notices to Mariners.
- III. Cumulative List of Temporary and Preliminary Australian Notices to Mariners.
- IV. Temporary and Preliminary Notices in force.

---

© Commonwealth of Australia 2021

This work is copyright. Apart from any use permitted under the Copyright Act 1968, no part may be reproduced by any process, adapted, communicated or commercially exploited without prior written permission from The Commonwealth represented by the Australian Hydrographic Office.

## IMPORTANT NOTICE

This edition of Notices to Mariners includes all significant information affecting AHO products which the AHO has become aware of since the last edition. All reasonable efforts have been made to ensure the accuracy and completeness of the information, including third party information, on which these updates are based. The AHO regards third parties from which it receives information as reliable, however the AHO cannot verify all such information and errors may therefore exist. The AHO does not accept liability for errors in third party information.

---

## GENERAL INSTRUCTIONS

The substance of these notices should be inserted on the charts affected.

Bearings are referred to the true compass and are reckoned clockwise from North; those relating to lights are given as seen by an observer from seaward.

Positions quoted in notices relate to WGS84 which is the horizontal datum for all charts produced by the Australian Hydrographic Office.

The range quoted for a light is its nominal range.

Depths are with reference to the chart datum of each chart. Heights are above mean high water springs or mean higher high water, as appropriate.

The capital letter (P) or (T) after the number of any notice denotes a preliminary or temporary notice respectively, which are contained separately at the end of the permanent notices.

---

## REPORTING OF DANGERS

Mariners are particularly requested to notify the AUSTRALIAN HYDROGRAPHIC OFFICE, Locked Bag 8801 Wollongong, NSW 2500 (Fax 02-4223 6599, e-mail [datacentre@hydro.gov.au](mailto:datacentre@hydro.gov.au) or, alternatively by filling in and submitting the [Hydrographic Notes](#) forms located on the web site – [www.hydro.gov.au](http://www.hydro.gov.au)), immediately on the discovery of new dangers or suspected dangers to navigation. For changes or defects in aids to navigation notify AusSAR (Fax 02-6230 6868 or email [rccaus@amsa.gov.au](mailto:rccaus@amsa.gov.au)).

---

## AUTHORISED USE

Copies of Australian notices are available free of charge from the Australian Hydrographic Office (AHO) website ([www.hydro.gov.au](http://www.hydro.gov.au)) and through the eNotices (email) service ([www.hydro.gov.au/enotices/enotices.htm](http://www.hydro.gov.au/enotices/enotices.htm)).

Individual Notices may be copied for the purpose of inserting Notice substance on official charts and publications. Paper copies may be printed by chart agents and distributed to customers on a cost recovery basis. Participating chart agents are listed on the AHO website as providing a 'Paper Notices to Mariners' service ([www.hydro.gov.au/webapps/jsp/agents/agents-list.jsp](http://www.hydro.gov.au/webapps/jsp/agents/agents-list.jsp)). Copies of the notices may not be sold for profit without prior written agreement.

## NUMERICAL INDEX OF NOTICES TO MARINERS

### Edition No 4

Notices	Aus Chart, INT Chart, ENC Cell, AHP, BA Pubs
<a href="#">132</a>	Aus 109, 110, 118, 391, 722, PNG 391
<a href="#">133</a>	Aus 24, 27, 28, 29, 105, 127, 152, 270, 280, 281, 347
<a href="#">134</a>	Amendment to Australian National Tide Tables 2021
<a href="#">135</a>	Amendment to Papua New Guinea National Tide Tables 2021
<a href="#">136</a>	Aus 806, 808
<a href="#">137</a>	Aus 200
<a href="#">138</a>	Aus 254
<a href="#">139</a>	Aus 237
<a href="#">140</a>	Aus 268
<a href="#">141</a>	Aus 240
<a href="#">142</a>	Aus 240, 815, 816, 817
<a href="#">143</a>	Aus 250
<a href="#">144</a>	Aus 256, 827
<a href="#">145</a>	Aus 4622, INT 622
<a href="#">146</a>	Aus 299
<a href="#">147</a>	Aus 23
<a href="#">148</a>	Aus 4708, INT 708
<a href="#">149</a>	Aus 59, 60
<a href="#">150</a>	Aus 336, 337
<a href="#">151</a>	Aus 606, 607
<a href="#">152</a>	Aus 167
<a href="#">153(T)</a>	Aus 490, 816, 818, 4635, INT 635
<a href="#">154(T)</a>	Aus 262
<a href="#">155(T)</a>	Aus 252, 254
<a href="#">156(T)</a>	Aus 236
<a href="#">157(T)</a>	Aus 236
<a href="#">158(T)</a>	Aus 247, 265
<a href="#">159(T)</a>	Aus 490, 818
<a href="#">160(T)</a>	Aus 256, 827
<a href="#">161(T)</a>	Aus 252, 824
<a href="#">162(T)</a>	Aus 256
<a href="#">163(T)</a>	Aus 391, 662
<a href="#">164(T)</a>	Aus 4603, 4604, 4622, INT 603, 604, 622, PNG 391
<a href="#">165(T)</a>	Aus 391, 4603, 4604, 4622, INT 603, 604, 622
<a href="#">166(T)</a>	Aus 837, 839, 840
<a href="#">167(T)</a>	Aus 24, 25, 26, 28
<a href="#">168(T)</a>	Aus 24
<a href="#">169(T)</a>	Aus 26, 28
<a href="#">170(T)</a>	Aus 110
<a href="#">171(T)</a>	Aus 110
<a href="#">172(T)</a>	Aus 137
<a href="#">173(T)</a>	Aus 349, 787, 4728, INT 728
<a href="#">174(T)</a>	Aus 349, 787
<a href="#">175(T)</a>	Aus 143, 155
<a href="#">176(T)</a>	Aus 169
<a href="#">177(T)</a>	Aus 178

## NUMERICAL INDEX OF CHARTS AFFECTED

### Edition No 4

Aus Chart	Notices
Aus 23	147
Aus 24	133, 167(T), 168(T)
Aus 25	167(T)
Aus 26	167(T), 169(T)
Aus 27	133
Aus 28	133, 167(T), 169(T)
Aus 29	133
Aus 59	149
Aus 60	149
Aus 105	133
Aus 109	132
Aus 110	132, 170(T), 171(T)
Aus 118	132
Aus 127	133
Aus 137	172(T)
Aus 143	175(T)
Aus 152	133
Aus 155	175(T)
Aus 167	152
Aus 169	176(T)
Aus 178	177(T)
Aus 200	137
Aus 236	156(T), 157(T)
Aus 237	139
Aus 240	141, 142
Aus 247	158(T)
Aus 250	143
Aus 252	155(T), 161(T)
Aus 254	138, 155(T)
Aus 256	144, 160(T), 162(T)
Aus 262	154(T)
Aus 265	158(T)
Aus 268	140
Aus 270	133
Aus 280	133
Aus 281	133
Aus 299	146
Aus 336	150
Aus 337	150
Aus 347	133
Aus 349	173(T), 174(T)
Aus 391	132, 163(T), 165(T)
Aus 490	153(T), 159(T)
Aus 606	151
Aus 607	151
Aus 662	163(T)
Aus 722	132
Aus 787	173(T), 174(T)
Aus 806	136
Aus 808	136
Aus 815	142
Aus 816	142, 153(T)
Aus 817	142
Aus 818	153(T), 159(T)

Aus Chart	Notices
Aus 824	161(T)
Aus 827	144, 160(T)
Aus 837	166(T)
Aus 839	166(T)
Aus 840	166(T)
Aus 4603	164(T), 165(T)
Aus 4604	164(T), 165(T)
Aus 4622	145, 164(T), 165(T)
Aus 4635	153(T)
Aus 4708	148
Aus 4728	173(T)
PNG 391	132, 164(T)

INT Chart	Notices
INT 603	164(T), 165(T)
INT 604	164(T), 165(T)
INT 622	145, 164(T), 165(T)
INT 635	153(T)
INT 708	148
INT 728	173(T)

## 132 AUSTRALIA - Products - New Charts, New Editions, Withdrawn Charts

Australian Hydrographic Office

### New Charts

<i>Chart</i>	<i>Title and Geographical limits</i>	<i>Scale</i>	<i>Publication Date</i>	<i>Remarks</i>
PNG 391	Papua New Guinea - Admiralty Islands - Nauna Island to Manus Island	1:300 000	19 February 2021	Adoption of Papua New Guinea chart numbering. Replaces Aus 391. General updating throughout; including latest bathymetric data.

### New Electronic Navigation Chart (Aus ENC)

<i>Cell Name</i>	<i>Title</i>	<i>Publication Date</i>	<i>Remarks</i>
AU5GOC01	Gold Coast Seaway	11 February 2021	AU5230P0 has been withdrawn.
AU5CNS01	Cairns	18 February 2021	AU5262X4 has been withdrawn.

### New Editions and Withdrawn Charts

<i>Chart</i>	<i>Title</i>	<i>Scale</i>	<i>Publication Date</i>	<i>Remarks</i>
Aus 118 (Edition 3)	Australia - South Coast - Western Australia - Approaches to King George Sound	1:50 000	19 February 2021	New edition with chart rescheme and general updating throughout. <b>Chart Aus 118 Edition 2 dated 18 June 2010 is now superseded and must be withdrawn from use.</b>
Aus 722 (Edition 5)	Australia - North Coast - Northern Territory - Beagle Gulf and Clarence Strait	1:150 000	19 February 2021	New edition with general updating throughout; including latest bathymetric data. <b>Chart Aus 722 Edition 4 dated 10 February 2017 is now superseded and must be withdrawn from use.</b>

### Charts withdrawn

<i>Chart</i>	<i>Remarks</i>
Aus 391	On publication of new chart PNG 391

### Charts withdrawn without replacement

<i>Chart</i>	<i>Title</i>	<i>Scale</i>	<i>Publication Date</i>
Aus 109 Edition 1	Australia - South Coast - Western Australia - Port of Albany	1:12 500	14 November 2003
Aus 110 Edition 2	Australia - South Coast - Western Australia - King George Sound Plan: Oyster Harbour	1:25 000	12 August 2011

### Chart permanently withdrawn

Charts listed above as withdrawn no longer meet chart carriage requirements and should be marked as "superseded" and replaced with the new chart/ new edition listed prior to passage through the area covered by the new chart.

When placing orders with a chart agent between notice of forthcoming edition and its publication, mariners should advise whether their order pertains to the current edition or the new edition.

For further details refer to the AHO website at [www.hydro.gov.au](http://www.hydro.gov.au) for new edition and new chart stock arrival information.

**133 AUSTRALIA - Products - New Charts and New Editions to be published shortly**

Australian Hydrographic Office

**New Charts to be published shortly**

<i>Chart</i>	<i>Title</i>	<i>Scale</i>	<i>Remarks</i>
NIL			

**New Editions to be published shortly**

<i>Chart</i>	<i>Title</i>	<i>Scale</i>	<i>Remarks</i>
Aus 347	Australia - - South Coast - South Australia - Backstairs Passage to Cape Martin	1:300 000	New edition with general updating throughout

**Charts to be withdrawn without replacement 5 March 2021**

<i>Chart</i>	<i>Title</i>	<i>Scale</i>	<i>Publication Date</i>
Aus 24	Australia - North Coast - Northern Territory - Port Darwin - Wickham Point	1:10 000	10 March 2017
Aus 27	Australia - North Coast - Northern Territory - Port Darwin - Middle Arm including Channel Island	1:10 000	10 March 2017
Aus 28	Australia - North Coast - Northern Territory - Port Darwin - East Arm	1:12 500	10 March 2017
Aus 29	Australia - North Coast - Northern Territory - Approaches to Bynoe Harbour and Port Patterson	1:50 000	21 November 2014
Aus 105	Australia - West Coast - Western Australia - Wedge Island to Lancelin	1:50 000	29 July 2011
Aus 127	Australia - South Coast - Plans in South Australia - South East Coast		30 March 2001
<b>Edition 1</b>	Plans:		
	Robe	1:5 000	
	Kingston SE	1:7 500	
	Port Elliot	1:10 000	
	Southend	1:10 000	
	Victor Harbor	1:10 000	
	Cape Jaffa Marina	1:15 000	
	Beachport	1:20 000	
	King Head to Port Elliot	1:50 000	
	Rivoli Bay	1:50 000	
	Port Caroline to Robe	1:75 000	
Aus 152	Australia - South Coast - Victoria - Plans in Western Port		4 June 2010
<b>Edition 2</b>	Plans:		
	Hastings Bight	1:10 000	
	Rutherford Inlet	1:15 000	
	Crib Point Oil Terminal Jetty	1:12 000	
	Hanns Inlet	1:7 500	

**Charts to be withdrawn without replacement 19 March 2021**

Aus 270	Australia - East Coast - Queensland - Plans in Queensland		22 February 2019
<b>Edition 4</b>	(Sheet 2)		
	Plans:		
	Cape Melville and Pipon Islets	1:75 000	
	Approaches to Heath Reef	1:50 000	
	Howick Group	1:50 000	
	Cape Flattery Wharf	1:10 000	
	Cooktown	1:10 000	
	Port Douglas	1:10 000	
Aus 280	Australia - East Coast - Queensland - Plans in Queensland		22 February 2019
<b>Edition 5</b>	(Sheet 3)		
	Plans:		
	Magpie Reef to Eden Reef	1:75 000	
	Flinders Group	1:50 000	

### 133 AUSTRALIA - Products - New Charts and New Editions to be published shortly

#### Charts to be withdrawn without replacement 19 March 2021

Aus 281 Australia - East Coast - Queensland - First Three Mile Opening 1:75 000 22 February 2019  
**Edition 3** to Cape Direction

### 134 AUSTRALIA - Product - Amendment to Australian National Tide Tables 2021

Australian Hydrographic Office

#### ANTT 2021

Page 353  
*Amend* CAIRNS To Chart Datum AUS 262 NE 05 FEB 2021 0.0

*Delete* CAIRNS To Chart Datum AUS 263 NC 11 MAY 2001 0.0  
 CAIRNS To Chart Datum AUS 264 NC 26 OCT 2001 0.0

Page 359  
*Delete* RABAUL To Chart Datum AUS 397 NC 29 FEB 2008 0.0

*Insert* RABAUL To Chart Datum PNG 397 NC 05 FEB 2021 0.0

Page 360  
*Amend* SYDNEY To Chart Datum AUS 200 NE 05 FEB 2021 0.0

*Delete* SYDNEY To Chart Datum AUS 201 NC 10 AUG 2018 0.0  
 SYDNEY To Chart Datum AUS 202 NC 14 DEC 2018 0.0  
 SYDNEY To Chart Datum AUS 203 NC 05 OCT 2018 0.0

### 135 PAPUA NEW GUINEA - Product - Amendment to Papua New Guinea National Tide Tables 2021

Australian Hydrographic Office

#### PNGNTT 2021

Page 103  
*Delete* RABAUL To Chart Datum AUS 397 NC 29 FEB 2008 0.0

*Insert* RABAUL To Chart Datum PNG 397 NC 05 FEB 2021 0.0

### 136 AUSTRALIA - NEW SOUTH WALES - Bermagui to Ben Buckler - Fish aggregating devices

NSW Department of Primary Industries

#### Aus 806 [588/2020]

Insert	special conical light buoy, <i>Fl.Y.5s FAD (Sep - Jun)</i> , without topmark	36° 25'.32 S	150° 15'.98 E
Delete	depth, 129m	36° 25'.2 S	150° 15'.9 E

#### Aus 808 [1021/2020]

Insert	special conical light buoy, <i>Fl.Y.5s FAD (Sep - Jun)</i> , without topmark	33° 55'.00 S	151° 24'.80 E
--------	--	--------------	---------------

**137 AUSTRALIA - NEW SOUTH WALES - Port Jackson - Chart note; legends**  
UKHO

**Aus 200** [NE 5/2/2021]

Amend	legend to <i>Inadequately Surveyed</i> (see ZOC diagram)	33° 47'.80 S	151° 17'.60 E
	legend to <i>Inadequately Surveyed</i> (see ZOC diagram)	33° 51'.20 S	151° 17'.50 E
	legend to <i>Inadequately Surveyed</i> (see ZOC diagram)	33° 54'.20 S	151° 16'.50 E

Delete	chart note, CLOSED WATERS	33° 53'.70 S	151° 07'.20 E
--------	---------------------------	--------------	---------------

**Aus 200 (Parramatta River)** [NE 5/2/2021]

Insert	magenta legend <i>Closed Waters</i> (see Note)	33° 49'.45 S	151° 02'.70 E
	accompanying note	33° 50'.5 S	151° 03'.3 E

**138 AUSTRALIA - QUEENSLAND - Bait Reef - Light beacon**  
Maritime Safety Queensland Notice 50/2021

**Aus 254 (Hook Reef)** [339/2020]

Insert	starboard lateral light beacon, <i>Fl.G.2-5s</i> , with topmark	19° 48'.56 S	149° 03'.78 E
--------	---	--------------	---------------

**139 AUSTRALIA - QUEENSLAND - Brisbane River - Fisherman Islands - Nomenclature**  
Maritime Safety Queensland Notice 43/2021

**Aus 237** [1022/2020]

Amend	name to <i>Fisherman Islands Tanker Terminal</i>	27° 23'.09 S	153° 09'.73 E
-------	--	--------------	---------------

**140 AUSTRALIA - QUEENSLAND - Cape Gloucester - Moorings; depths**  
Maritime Safety Queensland

**Aus 268** [134/2020]

Insert	legend, <i>Moorings</i> , centred on	20° 04'.259 S	148° 26'.284 E
	depth, <i>3m</i>	20° 04'.441 S	148° 26'.277 E
	depth, <i>2<sub>4</sub>m</i>	20° 04'.602 S	148° 26'.235 E

Delete	depth, <i>3<sub>6</sub>m</i>	20° 04'.47 S	148° 26'.26 E
	depth, <i>3<sub>3</sub>m</i>	20° 04'.60 S	148° 26'.17 E
	depth, <i>2<sub>7</sub>m</i>	20° 04'.70 S	148° 26'.33 E

**141 AUSTRALIA - QUEENSLAND - Great Sandy Strait - Tin Can Inlet - Light beacon; light buoy**  
Maritime Safety Queensland Notice 33/2021

**Aus 240** [94/2021]

Replace	light beacon with port lateral cylindrical light buoy, <i>Fl.R.4s</i> , with topmark	25° 49'.1 S	153° 02'.1 E
---------	--	-------------	--------------

**142 AUSTRALIA - QUEENSLAND - Hook Point - Light buoy northeastwards**  
Maritime Safety Queensland Notice 44/2021

**Aus 240** [141/2021]

Delete	light buoy	25° 47'.6 S	153° 09'.4 E
--------	------------	-------------	--------------

**Aus 815** [798/2020]

Insert	out of position special spherical light buoy, <i>Fl(5)Y.20s</i> , without topmark	25° 45'.62 S	153° 12'.23 E
--------	---	--------------	---------------

Delete	light buoy	25° 47'.6 S	153° 09'.4 E
--------	------------	-------------	--------------

**Aus 816** [230/2020]

Insert	out of position special spherical light buoy, <i>Fl(5)Y.20s</i> , without topmark	25° 45'.62 S	153° 12'.23 E
--------	---	--------------	---------------

**Aus 817** [273/2020]

Insert	out of position special spherical light buoy, <i>Fl(5)Y.20s</i> , without topmark	25° 45'.62 S	153° 12'.23 E
--------	---	--------------	---------------

Delete	light buoy	25° 47'.6 S	153° 09'.4 E
--------	------------	-------------	--------------



**143 AUSTRALIA - QUEENSLAND - Mackay Harbour - Dredged area; depths**  
Maritime Safety Queensland Notice 40(T)/2021

**Aus 250 (Mackay Harbour) [1024/2020]**

Insert	accompanying block	21° 06'.30 S	149° 13'.65 E
--------	--------------------	--------------	---------------

**144 AUSTRALIA - QUEENSLAND - Townsville - Cleveland Bay - Anchoring prohibited limit; infrastructure**  
Maritime Safety Queensland Notice 329/2020

**Aus 256 [743/2020]**

Insert	supply pipeline with legend, <i>Water</i> , between	19° 11'.75 S	146° 46'.47 E
		19° 10'.24 S	146° 47'.83 E
	accompanying block	19° 12'.0 S	146° 50'.0 E

Delete	supply pipeline and legend, <i>Water</i> , between	19° 11'.7 S	146° 46'.5 E
		19° 10'.4 S	146° 47'.8 E

**Aus 827 [142/2020]**

Insert	accompanying block	19° 12'.0 S	146° 50'.0 E
--------	--------------------	-------------	--------------

**145 PAPUA NEW GUINEA - Nauna Island to Manus Island - Chart limits**  
Australian Hydrographic Office

**Aus 4622 (INT 622) [1028/2020]**

Amend	legend to <i>PNG 391</i>	1° 47'.0 S	148° 25'.0 E
-------	--------------------------	------------	--------------

**146 AUSTRALIA - TORRES STRAIT - Madge Reef - Light beacon; light buoy**  
Maritime Safety Queensland

**Aus 299 [5/2021]**

Insert	port lateral cylindrical light buoy, <i>Fl.R.2-5s</i> , without topmark	10° 35'.334 S	142° 14'.176 E
--------	---	---------------	----------------

Delete	light beacon	10° 35'.34 S	142° 14'.18 E
--------	--------------	--------------	---------------

**147 AUSTRALIA - NORTHERN TERRITORY - Apsley Strait - Jetties**  
Northern Territory Government

**Aus 23 [NE 15/5/2020]**

Insert	continuous line, between	11° 45'.17 S	130° 38'.38 E
		11° 45'.15 S	130° 38'.40 E
	continuous line, between	11° 44'.75 S	130° 38'.45 E
		11° 44'.77 S	130° 38'.43 E

**148 INDONESIA - Java Sea - Bawean - Wreck**  
UKHO BA Notice 2/174/2021

**Aus 4708 (INT 708) [949/2020]**

Insert	depth, <i>13<sub>6</sub>m</i> , enclosed by danger circle with legend, <i>Wk</i>	5° 54'.1 S	112° 08'.7 E
--------	--	------------	--------------

**149 AUSTRALIA - WESTERN AUSTRALIA - Dampier - Parker Point - Light buoy**  
Rio Tinto

**Aus 59 [991/2020]**

Delete	light buoy	20° 38'.38 S	116° 43'.14 E
--------	------------	--------------	---------------

**Aus 60 [857/2020]**

Delete	light buoy	20° 38'.38 S	116° 43'.14 E
--------	------------	--------------	---------------

**150 AUSTRALIA - WESTERN AUSTRALIA - King George Sound - Chart limits**

Australian Hydrographic Office

**Aus 336 [194/2020]**

Insert	magenta limits with legend, <i>Aus 118</i> , in SW corner, between	35° 14'.2 S	117° 37'.2 E
		34° 56'.5 S	117° 37'.2 E
		34° 56'.5 S	118° 14'.0 E
		35° 14'.2 S	118° 14'.0 E
		35° 14'.2 S	117° 37'.2 E

Delete	magenta limits with legend, <i>Aus 118</i> , centred on	35° 06'.0 S	117° 57'.0 E
--------	---	-------------	--------------

**Aus 337 [803/2020]**

Insert	magenta limits with legend, <i>Aus 118</i> , in SE corner, between	35° 14'.2 S	117° 50'.7 E
		35° 14'.2 S	118° 14'.0 E
		34° 56'.5 S	118° 14'.0 E
		34° 56'.5 S	117° 50'.7 E

Delete	magenta limits with legend, <i>Aus 118</i> , centred on	35° 06'.0 S	118° 08'.0 E
--------	---	-------------	--------------

**151 INDIAN OCEAN - Cocos (Keeling) Islands - Depths**

EGS Survey Pty Ltd

**Aus 606 [376/2020]**

Insert	contour, between	12° 07'.87 S	96° 50'.33 E
		12° 07'.65 S	96° 50'.62 E
		12° 07'.54 S	96° 50'.61 E

Delete	contour, between	12° 07'.9 S	96° 50'.3 E
		12° 07'.5 S	96° 50'.6 E

**Aus 607 [376/2020]**

Insert	contour, between	12° 09'.107 S	96° 49'.933 E
		12° 09'.197 S	96° 50'.020 E
		12° 09'.247 S	96° 49'.939 E
	depth, 4 <sub>8</sub> m, enclosed by contour	12° 07'.654 S	96° 50'.497 E

Replace	depth, 10 <sub>4</sub> m, with depth, 10m, enclosed by contour	12° 05'.49 S	96° 52'.00 E
---------	--	--------------	--------------

Delete	contour, between	12° 09'.11 S	96° 49'.93 E
		12° 09'.25 S	96° 49'.94 E

**152 AUSTRALIA - TASMANIA - Tamar River - West Arm - Nav aids**

Marine and Safety Tasmania Notice M044/2021

**Aus 167 [NE 24/1/2020]**

Insert	port lateral spar buoy without topmark	41° 08'.244 S	146° 48'.216 E
--------	--	---------------	----------------

Replace	buoy with special cylindrical buoy without topmark	41° 08'.37 S	146° 48'.09 E
---------	--	--------------	---------------

Delete	beacon	41° 08'.26 S	146° 48'.27 E
	buoy	41° 08'.52 S	146° 47'.99 E

**153(T)/2021 AUSTRALIA - QUEENSLAND - Breaksea Spit - Light buoy withdrawn***Former Notice* - 916(T)/2020 is cancelled

Australian Maritime Safety Authority Temporary ATH 1/2021

The north cardinal light buoy, *Q A/S Racon (G)* (24° 21'.22 S 153° 08'.97 E), has been temporarily withdrawn. A north cardinal pillar light buoy, *Q A/S Racon (G)*, exists in situ.

Mariners are advised to navigate with caution in the area.

**Chart temporarily affected - Aus 490 - Aus 816 - Aus 818 - Aus 4635 (INT 635)**

**154(T)/2021 AUSTRALIA - QUEENSLAND - Holloways Beach - Dredging operations completed***Former Notice* - 1046(T)/2020 is cancelled

Maritime Safety Queensland

Cancel this notice on receipt.

**Chart formerly affected - Aus 262**

**155(T)/2021 AUSTRALIA - QUEENSLAND - Lindeman Island - Light beacon unlit**

Maritime Safety Queensland Notice 35(T)/2021

The light beacon, *Fl.G.2-5s* (20° 27'.64 S 149° 02'.61 E), is unlit.

**Chart temporarily affected - Aus 252 - Aus 254**

**156(T)/2021 AUSTRALIA - QUEENSLAND - Moreton Bay - Waterloo Bay - Dredging operations**

Maritime Safety Queensland Notice 49(T)/2021

The vessels *Sea Lion* and *Allan M* are conducting dredging operations in the channel (27° 28'.05 S 153° 13'.24 E).

The vessels will moor in position 27° 27'.31 S 153° 13'.17 E when not in use.

The vessels will monitor VHF Ch 13.

Mariners are advised to navigate with caution in the area.

**Chart temporarily affected - Aus 236**

**157(T)/2021 AUSTRALIA - QUEENSLAND - Moreton Bay - Rainbow Channel - Wreck**

Maritime Safety Queensland Notice 48(T)/2021

A wreck exists in position 27° 26'.35 S 153° 25'.43 E.

**Chart temporarily affected - Aus 236**

**158(T)/2021 AUSTRALIA - QUEENSLAND - Port Alma - Sea Reach - Light beacon unlit**

Maritime Safety Queensland Notice 45(T)/2021

The light beacon, *Fl.R.4s No6* (23° 29'.58 S 150° 57'.58 E), is unlit.

**Chart temporarily affected - Aus 247 - Aus 265**

**159(T)/2021 AUSTRALIA - QUEENSLAND - Port Bundaberg - Wreck northwards**

Maritime Safety Queensland Notice 51(T)/2021

A wreck exists in position 24° 30'.29 S 152° 20'.24 E.

Mariners are advised to navigate with caution.

**Chart temporarily affected - Aus 490 - Aus 818**

**160(T)/2021 AUSTRALIA - QUEENSLAND - Rattlesnake Island - Live firing**

Maritime Safety Queensland Notices 53(T)/2021, 54(T)/2021

Live firing activities will be conducted within a 5M radius of position 19° 02'.27 S 146° 36'.43 E during the period 26 February to 1 March 2021 and on 4 March 2021.

Mariners are advised to navigate with caution and keep well clear of the area.

**Chart temporarily affected - Aus 256 - Aus 827**

**161(T)/2021 AUSTRALIA - QUEENSLAND - Repulse Bay - Light buoy**

Maritime Safety Queensland Notice 34(T)/2021

A special light buoy, *Fl. Y. 3s*, exists in position 20° 34'.57 S 148° 44'.11 E.

**Chart temporarily affected - Aus 252 - Aus 824**

**162(T)/2021 AUSTRALIA - QUEENSLAND - Townsville - Harbour works completed**

*Former Notice* - 617(T)/2020 is cancelled

Maritime Safety Queensland Notice 329/2020

Cancel this notice on receipt.

**Chart formerly affected - Aus 256**

**163(T)/2021 PAPUA NEW GUINEA - Admiralty Islands - Seeadler Harbour - Shoaling charted**

*Former Notice* - 78(P)/2019 is cancelled

LADS Flight

Cancel this notice on receipt.

**Chart formerly affected - Aus 391 - Aus 662**

**164(T)/2021 PAPUA NEW GUINEA - Bismarck Sea - Alim Island - Light unlit**

National Maritime Safety Authority PNG Coastal Navigation Warning 1/2020

The light, *Fl. 5s 31m 10M* (2° 53'.31 S 147° 03'.68 E), is unlit.

**Chart temporarily affected - Aus 4603 (INT 603) - Aus 4604 (INT 604) - Aus 4622 (INT 622) - PNG 391**

**165(T)/2021 PAPUA NEW GUINEA - Bismarck Sea - Alim Island - Light unlit**

*Former Notice* - 108(T)/2020 is cancelled

National Maritime Safety Authority PNG Coastal Navigation Warning 1/2020

Cancel this notice on receipt.

**Chart formerly affected - Aus 391 - Aus 4603 (INT 603) - Aus 4604 (INT 604) - Aus 4622 (INT 622)**

**166(T)/2021 AUSTRALIA - TORRES STRAIT - Great North East Channel - Survey operations**

Former Notice - 76(T)/2021 is cancelled

Maritime Safety Queensland Notice 55(T)/2021

MV *Offshore Guardian* is conducting survey operations in an area bounded by the following positions:

09° 48'.7 S 143° 04'.4 E

09° 48'.7 S 143° 20'.4 E

09° 25'.9 S 143° 37'.3 E

09° 21'.6 S 143° 30'.8 E

09° 30'.0 S 143° 16'.2 E.

Tide gauges, marked by special light buoys, *Fl. 4.5s*, exist in the following positions:

09° 45'.5 S 143° 15'.4 E

09° 38'.0 S 143° 27'.0 E

09° 27'.3 S 143° 33'.8 E

09° 37'.2 S 143° 17'.5 E

09° 29'.8 S 143° 19'.7 E

09° 41'.8 S 143° 09'.4 E.

Mariners are advised to navigate with caution in the area.

**Chart temporarily affected - Aus 837 - Aus 839 - Aus 840**

**167(T)/2021 AUSTRALIA - NORTHERN TERRITORY - Darwin - Frances Bay - Wreck**

Department of Infrastructure, Planning and Logistics NT Notice 6(T)/2021

A stranded wreck marked by a special light buoy, *Fl. Y, 3s* exists in position 12° 28'.24 S 130° 51'.37 E.

**Chart temporarily affected - Aus 24 - Aus 25 - Aus 26 - Aus 28**

**168(T)/2021 AUSTRALIA - NORTHERN TERRITORY - Darwin - Mooring buoy**

Northern Territory Government Notice 8(T)/2021

An unlit mooring buoy exists in position 12° 27'.94 S 130° 49'.85 E.

**Chart temporarily affected - Aus 24**

**169(T)/2021 AUSTRALIA - NORTHERN TERRITORY - Darwin - Elizabeth River - Survey operations**

Department of Infrastructure, Planning and Logistics NT NTM 15(T)/2021

MV *Moresby*, towing a 100m streamer, will be conducting a geophysical survey in the vicinity of Preston Point (12° 30'.60 S 130° 53'.75 E) and Elizabeth River between points:

12° 30'.20 S 130° 54'.20 E

12° 30'.25 S 130° 55'.67 E

12° 31'.92 S 130° 56'.42 E

12° 32'.05 S 130° 57'.30 E.

The vessel will display appropriate shapes and monitor VHF Ch 10 and Ch 16.

Mariners are advised to navigate with caution in the area. 50m clearance requested.

**Chart temporarily affected - Aus 26 - Aus 28**

**170(T)/2021 AUSTRALIA - WESTERN AUSTRALIA - Emu Point - Scientific instrument recovered**

Former Notice - 761(T)/2017 is cancelled

Southern Ports Authority

Cancel this notice on receipt.

**Chart formerly affected - Aus 110**

**171(T)/2021 AUSTRALIA - WESTERN AUSTRALIA - Oyster Harbour - Artificial reef completed***Former Notice* - 1283(T)/2019 is cancelled

Department of Transport WA Notice 136/2019

Cancel this notice on receipt.

**Chart formerly affected - Aus 110****172(T)/2021 AUSTRALIA - SOUTH AUSTRALIA - Port Adelaide - Dredging operations***Former Notice* - 936(T)/2020 is cancelled

Department for Infrastructure and Transport SA Notice 29(T)/2020, 3/2021

Dredging operations are in progress at the following berths:

<i>Berth</i>	<i>Position</i>
27	34° 49'.66 S 138° 30'.57 E
29 and northern approaches	34° 49'.39 S 138° 30'.72 E
No3 Dock Turning Basin	34° 49'.84 S 138° 30'.56 E.

A dredge, barge and support vessel are on site.

The dredge will display appropriate lights and shapes.

A submerged pipeline exists between northern approaches (34° 48'.47 S 138° 30'.98 E) and No3 Dock Turning Basin.

Mariners are advised to navigate with caution in the area.

**Chart temporarily affected - Aus 137****173(T)/2021 AUSTRALIA - VICTORIA - Port Campbell - Drill rig southwards**MODU *Ocean Onyx*, Australian Maritime Safety Authority Auscoast Warning 28/2021Drill rig *Ocean Onyx* is conducting drilling operations in position 38° 53'.49 S 142° 52'.95 E.**Chart temporarily affected - Aus 349 - Aus 787 - Aus 4728 (INT 728)****174(T)/2021 AUSTRALIA - VICTORIA - Port Campbell - Mooring buoys recovered southwards***Former Notice* - 358(T)/2020 is cancelled

Deep Sea Mooring

Cancel this notice on receipt.

**Chart formerly affected - Aus 349 - Aus 787****175(T)/2021 AUSTRALIA - VICTORIA - Port Phillip - Drill rig moved***Former Notice* - 438(T)/2020 is cancelledMODU *Ocean Onyx*

Cancel this notice on receipt.

**Chart formerly affected - Aus 143 - Aus 155****176(T)/2021 AUSTRALIA - TASMANIA - Georges Bay - Lords Point - Beacon destroyed**

Marine and Safety Tasmania Notice M48/2021

The starboard lateral beacon No5 (41° 17'.85 S 148° 19'.07 E) has been destroyed.

**Chart temporarily affected - Aus 169**

**177(T)/2021 AUSTRALIA - TASMANIA - King Island - Grassy Harbour - Platform, submarine cable, prohibited area**  
Marine and Safety Tasmania Notice M19/2021

A lit platform, *F*, exists in position 40° 03'.97 S 144° 03'.53 E.

A submarine power cable exists between positions 40° 03'.97 S 144° 03'.53 E and 40° 03'.91 S 144° 03'.53 E.

An entry prohibited area, with radius 125m, exists centred on position 40° 03'.97 S 144° 03'.53 E.

Mariners are advised to navigate with caution in the area.

**Chart temporarily affected - Aus 178**

II

**HYDROGRAPHIC REPORTS**

NIL



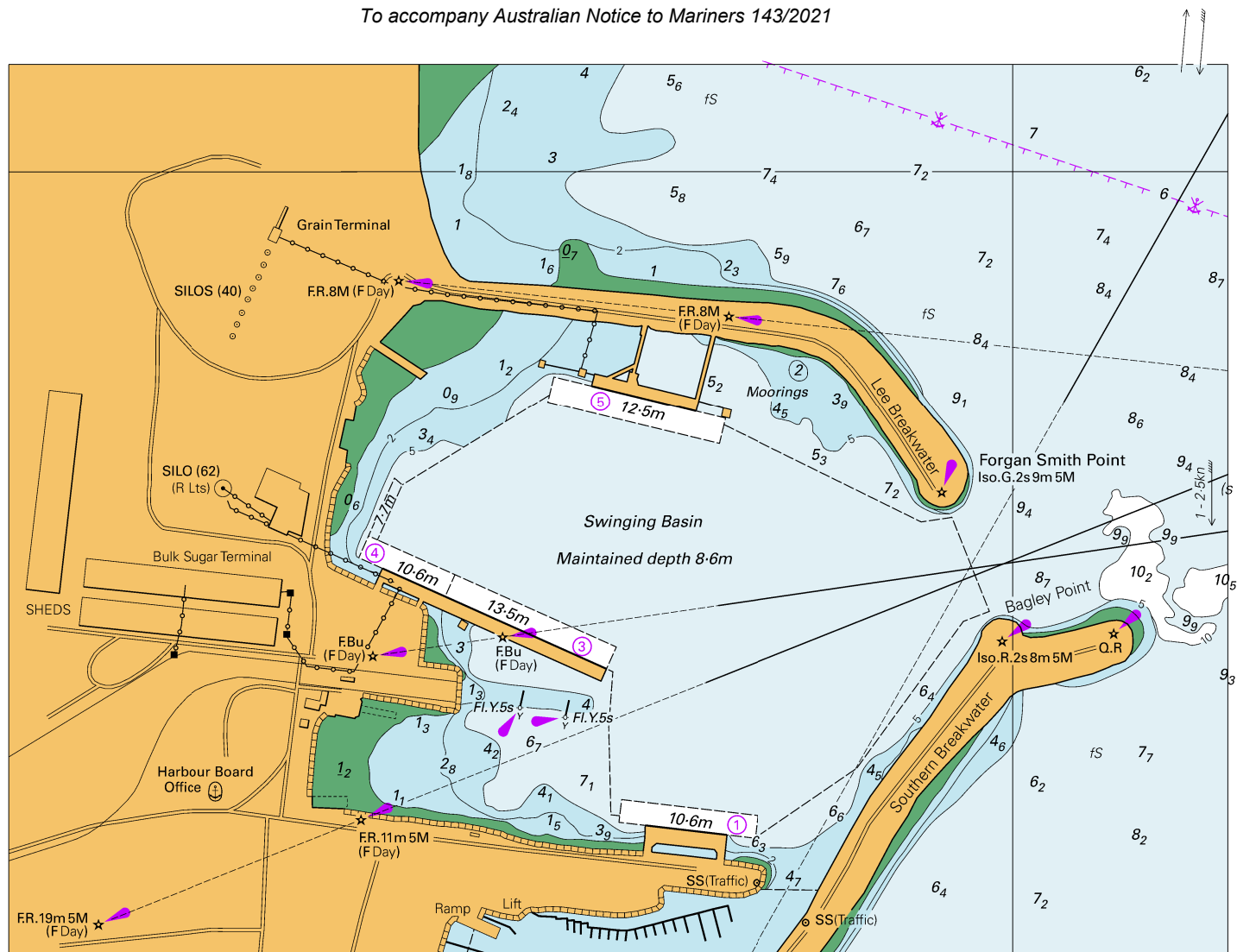
*To accompany Australian Notice to Mariners 137/2021*

CLOSED WATERS

All waterways west of the Silverwater  
Bridge are closed to all vessels other than  
authorised vessels.

*Note for chart Aus 200*

To accompany Australian Notice to Mariners 143/2021



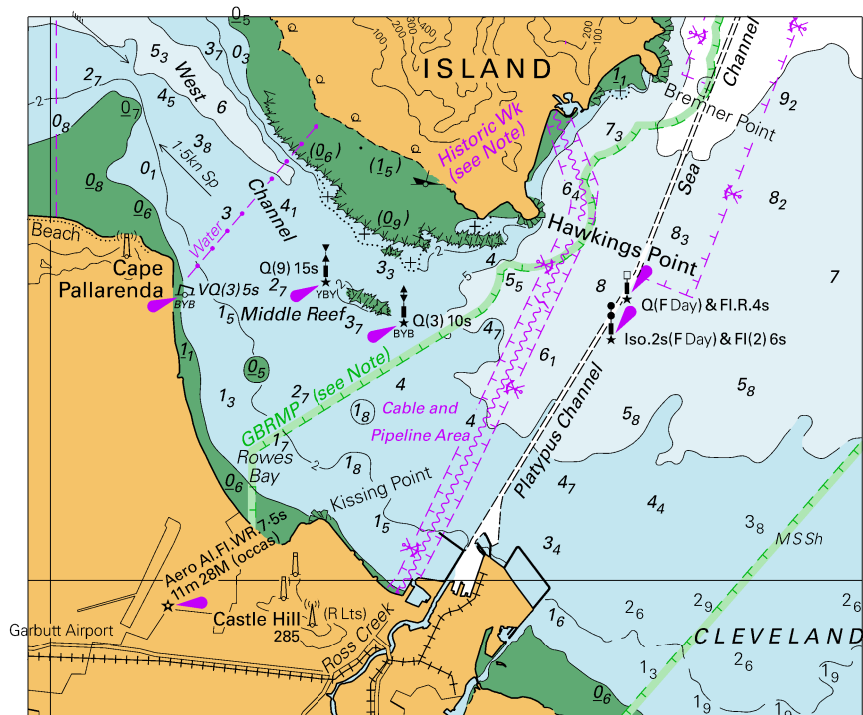
Block for chart Aus 250

© Commonwealth of Australia 2021

(186.8 x 136.0mm)



To accompany Australian Notice to Mariners 144/2021



Block for chart Aus 827 © Commonwealth of Australia 2021

(110.1 x 92.4mm)