



22 January 2021

Edition 2

AUSTRALIAN NOTICES TO MARINERS

Notices 38 - 87

Published fortnightly by the Australian Hydrographic Office



Australian Notices to Mariners are the authority for correcting charts and publications published by the Australian Hydrographic Office covering Australia, Papua New Guinea, Solomon Islands, Australian Antarctic Territory and Timor-Leste.

Commodore S.T. DUNNE RAN
Hydrographer of Australia

SECTIONS.

- I. Australian Notices to Mariners, including blocks and notes.
- II. Hydrographic Reports.

SUPPLEMENTS.

- I. Tracings
- II. Cumulative List of Australian Notices to Mariners.
- III. Cumulative List of Temporary and Preliminary Australian Notices to Mariners.
- IV. Temporary and Preliminary Notices in force.

© Commonwealth of Australia 2021

This work is copyright. Apart from any use permitted under the Copyright Act 1968, no part may be reproduced by any process, adapted, communicated or commercially exploited without prior written permission from The Commonwealth represented by the Australian Hydrographic Office.

IMPORTANT NOTICE

This edition of Notices to Mariners includes all significant information affecting AHO products which the AHO has become aware of since the last edition. All reasonable efforts have been made to ensure the accuracy and completeness of the information, including third party information, on which these updates are based. The AHO regards third parties from which it receives information as reliable, however the AHO cannot verify all such information and errors may therefore exist. The AHO does not accept liability for errors in third party information.

GENERAL INSTRUCTIONS

The substance of these notices should be inserted on the charts affected.

Bearings are referred to the true compass and are reckoned clockwise from North; those relating to lights are given as seen by an observer from seaward.

Positions quoted in notices relate to WGS84 which is the horizontal datum for all charts produced by the Australian Hydrographic Office.

The range quoted for a light is its nominal range.

Depths are with reference to the chart datum of each chart. Heights are above mean high water springs or mean higher high water, as appropriate.

The capital letter (P) or (T) after the number of any notice denotes a preliminary or temporary notice respectively, which are contained separately at the end of the permanent notices.

REPORTING OF DANGERS

Mariners are particularly requested to notify the AUSTRALIAN HYDROGRAPHIC OFFICE, Locked Bag 8801 Wollongong, NSW 2500 (Fax 02-4223 6599, e-mail datacentre@hydro.gov.au or, alternatively by filling in and submitting the [Hydrographic Notes](#) forms located on the web site – www.hydro.gov.au), immediately on the discovery of new dangers or suspected dangers to navigation. For changes or defects in aids to navigation notify AusSAR (Fax 02-6230 6868 or email rccaus@amsa.gov.au).

AUTHORISED USE

Copies of Australian notices are available free of charge from the Australian Hydrographic Office (AHO) website (www.hydro.gov.au) and through the eNotices (email) service (www.hydro.gov.au/enotices/enotices.htm).

Individual Notices may be copied for the purpose of inserting Notice substance on official charts and publications. Paper copies may be printed by chart agents and distributed to customers on a cost recovery basis. Participating chart agents are listed on the AHO website as providing a 'Paper Notices to Mariners' service (www.hydro.gov.au/webapps/jsp/agents/agents-list.jsp). Copies of the notices may not be sold for profit without prior written agreement.

NUMERICAL INDEX OF NOTICES TO MARINERS

Edition No 2

Notices	Aus Chart, INT Chart, ENC Cell, AHP, BA Pubs
38	Aus 200, 201, 202, 203, 262, 263, 264, 393, 397, 398
39	Aus 43, 44, 126, 129, 139
40	Amendment to Australian National Tide Tables 2021
41	Amendment to Mariner's Handbook for Australian Waters AHP20
42	Trial Implementation of Iridium Safetycast Services
43	Aus 293
44	Aus 314, 317, 319
45	Aus 53
46	Aus 322
47	Aus 343, 346, 347, 485, 776, 780
48	Aus 780
49	Aus 777
50	Aus 780, 781
51	Aus 357
52	Aus 174
53	SLB 103
54(T)	Aus 200, 202
55(T)	Aus 44
56(T)	Aus 240
57(T)	Aus 244, 245, 271
58(T)	Aus 244, 271
59(T)	Aus 244, 245, 247, 271, 272
60(T)	Aus 244, 271
61(T)	Aus 244, 245, 246
62(T)	Aus 245, 246
63(T)	Aus 244, 271
64(T)	Aus 245
65(T)	Aus 245, 246, 247, 271, 819
66(T)	Aus 245, 246, 247
67(T)	Aus 245, 272
68(T)	Aus 245, 247
69(T)	Aus 244, 245, 271
70(T)	Aus 236
71(T)	Aus 236
72(T)	Aus 236
73(T)	Aus 236
74(T)	Aus 235
75(T)	Aus 840, 841
76(T)	Aus 837, 839, 840
77(T)	Aus 81
78(T)	Aus 327, 4723, INT 723
79(T)	Aus 346, 347, 780
80(T)	Aus 139, 781
81(T)	Aus 781
82(T)	Aus 129
83(T)	Aus 143, 155
84(T)	Aus 154
85(T)	Aus 144, 150, 158
86(T)	Aus 158
87(T)	Aus 171, 349, 789, 796

NUMERICAL INDEX OF CHARTS AFFECTED

Edition No 2

Aus Chart	Notices
Aus 43	39
Aus 44	39, 55(T)
Aus 53	45
Aus 81	77(T)
Aus 126	39
Aus 129	39, 82(T)
Aus 139	39, 80(T)
Aus 143	83(T)
Aus 144	85(T)
Aus 150	85(T)
Aus 154	84(T)
Aus 155	83(T)
Aus 158	85(T), 86(T)
Aus 171	87(T)
Aus 174	52
Aus 200	38, 54(T)
Aus 201	38
Aus 202	38, 54(T)
Aus 203	38
Aus 235	74(T)
Aus 236	70(T), 71(T), 72(T), 73(T)
Aus 240	56(T)
Aus 244	57(T), 58(T), 59(T), 60(T), 61(T), 63(T), 69(T)
Aus 245	57(T), 59(T), 61(T), 62(T), 64(T), 65(T), 66(T), 67(T), 68(T), 69(T)
Aus 246	61(T), 62(T), 65(T), 66(T)
Aus 247	59(T), 65(T), 66(T), 68(T)
Aus 262	38
Aus 263	38
Aus 264	38
Aus 271	57(T), 58(T), 59(T), 60(T), 63(T), 65(T), 69(T)
Aus 272	59(T), 67(T)
Aus 293	43
Aus 314	44
Aus 317	44
Aus 319	44
Aus 322	46
Aus 327	78(T)
Aus 343	47
Aus 346	47, 79(T)
Aus 347	47, 79(T)
Aus 349	87(T)
Aus 357	51
Aus 393	38
Aus 397	38
Aus 398	38
Aus 485	47
Aus 776	47
Aus 777	49
Aus 780	47, 48, 50, 79(T)
Aus 781	50, 80(T), 81(T)
Aus 789	87(T)
Aus 796	87(T)
Aus 819	65(T)
Aus 837	76(T)

Aus Chart	Notices
Aus 839	76(T)
Aus 840	75(T), 76(T)
Aus 841	75(T)
Aus 4723	78(T)
SLB 103	53

INT Chart	Notices
INT 723	78(T)

38 AUSTRALIA - Products - New Charts and New Editions to be published shortly

Australian Hydrographic Office

New Charts to be published shortly

<i>Chart</i>	<i>Title</i>	<i>Scale</i>	<i>Remarks</i>
PNG 393	Papua New Guinea - New Ireland - Tanga Islands to North Cape	1:300 000	Adoption of Papua New Guinea chart numbering. Replaces Aus 516. General updating throughout.
PNG 397	Papua New Guinea - New Britain - New Ireland - Bougainville Island - Cape Kwoi to Buka Island including Green Islands	1:300 000	Adoption of Papua New Guinea chart numbering. Replaces Aus 521. General updating throughout.
PNG 398	Papua New Guinea - New Ireland - Tulun Islands to Tanga Islands	1:300 000	Adoption of Papua New Guinea chart numbering. Replaces Aus 522. General updating throughout.

New Editions to be published shortly

<i>Chart</i>	<i>Title</i>	<i>Scale</i>	<i>Remarks</i>
Aus 200	Australia - East Coast - New South Wales - Port Jackson Inset: Parramatta River	1:25 000 1:25 000	New edition with general updating throughout; including latest bathymetric data.
Aus 262	Australia - East Coast - Queensland - Approaches to Cairns	1:25 000	New edition with general updating throughout; including latest bathymetric data.

Charts to be withdrawn

<i>Chart</i>	<i>Remarks</i>
Aus 393	On publication of new chart PNG 393
Aus 397	On publication of new chart PNG 397
Aus 398	On publication of new chart PNG 398

Charts to be withdrawn without replacement 5 February 2021

<i>Chart</i>	<i>Title</i>	<i>Scale</i>	<i>Publication Date</i>
Aus 201 Edition 3	Australia - East Coast - New South Wales - Port Jackson (Eastern Sheet)	1:7 500	10 August 2018
Aus 202 Edition 3	Australia - East Coast - New South Wales - Port Jackson (Central Sheet) - Sydney Harbour	1:7 500	14 December 2018
Aus 203 Edition 2	Australia - East Coast - New South Wales - Port Jackson (Western Sheet) - Parramatta and Lane Cove Rivers Inset: Parramatta River	1:10 000 1:10 000	5 October 2018
Aus 263 Edition 1	Australia - East Coast - Queensland - Cairns (Northern Sheet)	1:7 500	11 May 2001
Aus 264 Edition 1	Australia - East Coast - Queensland - Cairns (Southern Sheet)	1:7 500	26 October 2001

Charts to be withdrawn without replacement 19 February 2021

<i>Chart</i>	<i>Title</i>	<i>Scale</i>	<i>Remarks</i>
Aus 270	Australia - East Coast - Queensland - Plans in Queensland		22 February 2019
Edition 4	(Sheet 2)		
	Plans:		
	Cape Melville and Pipon Islets	1:75 000	
	Approaches to Heath Reef	1:50 000	
	Howick Group	1:50 000	
	Cape Flattery Wharf	1:10 000	
	Cooktown	1:10 000	
	Port Douglas	1:10 000	
Aus 280	Australia - East Coast - Queensland - Plans in Queensland		22 February 2019
Edition 5	(Sheet 3)		
	Plans:		
	Magpie Reef to Eden Reef	1:75 000	
	Flinders Group	1:50 000	
Aus 281	Australia - East Coast - Queensland - First Three Mile Opening	1:75 000	22 February 2019
Edition 3	to Cape Direction		

39 AUSTRALIA - Products - New Charts, New Editions, Withdrawn Charts

Australian Hydrographic Office

New Charts

<i>Chart</i>	<i>Title and Geographical limits</i>	<i>Scale</i>	<i>Publication Date</i>	<i>Remarks</i>
NIL				

New Electronic Navigation Chart (Aus ENC)

<i>Cell Name</i>	<i>Title</i>	<i>Publication Date</i>	<i>Remarks</i>
NIL			

New Editions and Withdrawn Charts

<i>Chart</i>	<i>Title</i>	<i>Scale</i>	<i>Publication Date</i>	<i>Remarks</i>
NIL				

Charts withdrawn without replacement

<i>Chart</i>	<i>Title</i>	<i>Scale</i>	<i>Publication Date</i>
Aus 43 Edition 1	Australia - North West Coast - Indian Ocean - Scott and Seringpatam Reefs	1:75 000	7 November 2008
Aus 44 Edition 4	Timor Sea - Ashmore Reef	1:37 500	13 July 2018
Aus 126 Edition 1	Australia - South Coast - Plans in South Australia (Sheet 5) Plans: Althorpe Islands Backstairs Passage	 1:75 000 1:75 000	4 June 2010
Aus 129 Edition 1	Australia - South Coast - South Australia - Approaches to Nepean Bay Plan: Kingscote	1:50 000 1:10 000	27 January 2012
Aus 139 Edition 1	Australia - South Coast - Plans in South Australia (Sheet 2) Plans: Macdonnell Sound Ardrossan Harbor Approaches Ardrossan Harbor Klein Point Port Giles	 1:50 000 1:50 000 1:12 500 1:5 000 1:7 500	3 October 2003

Chart permanently withdrawn

Charts listed above as withdrawn no longer meet chart carriage requirements and should be marked as "superseded" and replaced with the new chart/ new edition listed prior to passage through the area covered by the new chart.

When placing orders with a chart agent between notice of forthcoming edition and its publication, mariners should advise whether their order pertains to the current edition or the new edition.

For further details refer to the AHO website at www.hydro.gov.au for new edition and new chart stock arrival information.

40 AUSTRALIA - Product - Amendment to Australian National Tide Tables 2021
Australian Hydrographic Office

ANTT 2021

Page 352

Amend ALBANY To Chart Datum ENC AU5110P0 to AU5ALH01 0.0

Page 355

Delete GLADSTONE To Chart Datum AUS 244 NC 30 JAN 2015 0.0
GLADSTONE To Chart Datum AUS 271 NC 29 AUG 2014 0.0
Amend GLADSTONE To Chart Datum AUS 245 NE 08 JAN 2021 0.0
GLADSTONE To Chart Datum AUS 246 NE 08 JAN 2021 0.0

Page 358

Amend PORT HEDLAND To Chart Datum ENC AU5052P0 to AU5PHE01 0.0

41 AUSTRALIA - Product - Amendment to Mariner's Handbook for Australian Waters AHP20
Australian Hydrographic Office

Chapter 11 – Section 11.10 – Port Tables – Commencement of “Adelaide VTS”

Replace pages (234-236) with accompanying block

42 AUSTRALIA - Trial Implementation of Iridium SafetyCast Services
Australian Maritime Safety Authority

MARITIME SAFETY INFORMATION – ON TRIAL IMPLEMENTATION OF IRIDIUM SAFETYCAST SERVICES

The International Maritime Organization (IMO), International Hydrographic Organization (IHO) and World Meteorological Organization (WMO) announce the establishment of the Iridium SafetyCast Service, as a recognised mobile satellite service in the Global Maritime Distress and Safety System (GMDSS). Effective 11 December 2020, Iridium declared the Iridium SafetyCast Service operational for broadcasting navigational warnings, meteorological warnings and forecasts, and search and rescue (SAR) related information in the English language.

All distress alerting will be received by a Rescue Coordination Centre (RCC).

It is important to note the implementation process for NAVAREAs and METAREAs will be phased with the following status: planned, on trial, and operational. Please visit the IHO website (<https://iho.int/en/wwwnws>) for details on the implementation status of each NAVAREA and METAREA.

The Australian Bureau of Meteorology (as METAREA X) and Australian Maritime Safety Authority (as JRCC Australia and NAVAREA X) announce the commencement of the ‘on trial’ phase in Australia from 23 December 2020.

RCC Australia, NAVAREA X and METAREA X will provide SAR related information, navigational warnings, meteorological warnings and forecasts on an intermittent and test basis. The “on trial” period is a test and evaluation stage, which is necessary to ensure messages are processed and promulgated in a timely and appropriate manner.

Mariners are advised to check their manufacturer’s operation manuals to obtain information on the settings for their SafetyCast receivers.

Announcement of the ‘operational’ phase will come at a later date via the Iridium SafetyCast Service and the Australian Notices to Mariners. This includes implementation of distress alert services by JRCC Australia.

Further information on broadcast areas for navigational warnings, meteorological warnings and forecasts are available in the Mariner's Handbook for Australian Waters (AHP20) published by the Australian Hydrographic Office (AHO).

43 AUSTRALIA - TORRES STRAIT - Thursday Island - Nav aids; infrastructure; depths

Maritime Safety Queensland

Aus 293 [5/2021]

Insert	accompanying block	10° 35'.0 S	142° 14'.5 E
--------	--------------------	-------------	--------------

44 AUSTRALIA - WESTERN AUSTRALIA - Indian Ocean - Ashmore Reef - Chart withdrawn; chart limits; chart note; ZOC diagram

Australian Hydrographic Office

Note: position of existing chart notes may vary on certain charts.**Aus 314 [1044/2019]**

Insert	accompanying ZOC diagram	11° 06'.0 S	125° 53'.0 E
	accompanying block	12° 10'.0 S	123° 03'.0 E
	accompanying chart note, ELECTRONIC NAVIGATIONAL CHART (ENC)	12° 49'.0 S	125° 47'.0 E

Delete	chart note, OMISSIONS FROM CHART	12° 34'.4 S	125° 47'.3 E
--------	----------------------------------	-------------	--------------

Aus 317 [193/2020]

Insert	accompanying chart note, ELECTRONIC NAVIGATIONAL CHART (ENC)	10° 50'.5 S	120° 31'.0 E
	accompanying block	12° 10'.0 S	123° 03'.0 E
	accompanying ZOC diagram	12° 13'.0 S	120° 25'.5 E

Delete	chart note, OMISSIONS FROM CHART	10° 48'.5 S	120° 20'.0 E
--------	----------------------------------	-------------	--------------

Aus 319 [10/2021]

Insert	accompanying block	12° 16'.5 S	123° 07'.0 E
	accompanying ZOC diagram	12° 17'.5 S	125° 16'.0 E
	accompanying chart note, ELECTRONIC NAVIGATIONAL CHART (ENC)	13° 25'.5 S	123° 01'.0 E

45 AUSTRALIA - WESTERN AUSTRALIA - Port Hedland - Topmark

UKHO

Aus 53 [992/2020]

Replace	topmark with west cardinal topmark	20° 14'.6 S	118° 34'.2 E
---------	------------------------------------	-------------	--------------

46 AUSTRALIA - WESTERN AUSTRALIA - Scott Reef - Chart withdrawn; chart limits; chart note; ZOC diagram

Australian Hydrographic Office

Note: position of existing chart notes may vary on certain charts.**Aus 322 [874/2019]**

Insert	accompanying block	12° 17'.3 S	123° 01'.5 E
	accompanying chart note, ELECTRONIC NAVIGATIONAL CHART (ENC)	12° 54'.5 S	121° 26'.0 E
	accompanying ZOC diagram	13° 20'.0 S	121° 21'.0 E
	magenta legend, <i>ENC</i> (see <i>Note</i>), centred on	13° 47'.3 S	121° 55'.5 E

Delete	chart note, ASHMORE REEF NATIONAL NATURE RESERVE, on certain copies only	12° 54'.5 S	121° 26'.0 E
	magenta limits with legend, Aus 43, centred on	13° 53'.0 S	121° 54'.0 E

47 AUSTRALIA - SOUTH AUSTRALIA - Althorpe Island to Backstairs Passage - Chart withdrawn; chart limits; chart note; ZOC diagram

Australian Hydrographic Office

Note: position of existing chart notes may vary on certain charts.

Aus 343 [240/2020]

Insert	accompanying ZOC diagram	36° 11'.0 S	134° 27'.0 E
--------	--------------------------	-------------	--------------

Delete	magenta limits with legend, Aus 126, centred on	35° 18'.0 S	136° 50'.0 E
--------	---	-------------	--------------

Aus 346 [1035/2020]

Delete	magenta limits with legend, Aus 126, centred on	35° 55'.0 S	138° 09'.0 E
	magenta limits with legend, Aus 126, centred on	37° 16'.0 S	136° 01'.0 E

Aus 347 [10/2017]

Delete	magenta limits with legend, Aus 126, centred on	35° 48'.0 S	138° 12'.0 E
--------	---	-------------	--------------

Aus 485 [1035/2020]

Delete	magenta limits with legend, Aus 126, centred on	32° 49'.2 S	136° 32'.7 E
	magenta limits with legend, Aus 126, centred on	32° 52'.3 S	136° 40'.5 E
	magenta limits with legend, Aus 126, centred on	35° 18'.0 S	136° 50'.0 E
	magenta limits with legend, Aus 126, centred on	35° 48'.0 S	138° 09'.0 E

Aus 776 [163/2019]

Insert	accompanying ZOC diagram	35° 00'.5 S	137° 19'.0 E
--------	--------------------------	-------------	--------------

Delete	magenta limits with legend, Aus 126, centred on	35° 08'.0 S	136° 50'.0 E
--------	---	-------------	--------------

Aus 780 [859/2020]

Insert	magenta legend, <i>ENC (see Note)</i> , centred on	35° 22'.5 S	136° 56'.3 E
	magenta legend, <i>ENC (see Note)</i> , centred on	35° 37'.8 S	138° 02'.2 E
	accompanying ZOC diagram	35° 47'.0 S	136° 48'.0 E

Delete	magenta limits with legend, Aus 126, centred on	35° 18'.0 S	136° 52'.0 E
	magenta limits with legend, Aus 126, centred on	35° 45'.0 S	138° 10'.0 E
	chart note, OMISSIONS FROM CHART	35° 48'.0 S	137° 14'.5 E

48 AUSTRALIA - SOUTH AUSTRALIA - Kangaroo Island - Nepean Bay - Chart withdrawn; chart limits

Australian Hydrographic Office

Aus 780 [47/2021]

Insert	accompanying block A	35° 33'.0 S	137° 21'.0 E
	accompanying block B	35° 35'.5 S	137° 36'.0 E
	magenta legend, <i>ENC (see Note)</i> , centred on	35° 42'.4 S	137° 49'.7 E
	legend, <i>Channel marked by beacons</i> , centred on	35° 47'.5 S	137° 45'.1 E

Delete	magenta limits with legend, Aus 129, centred on	35° 39'.0 S	137° 40'.0 E
--------	---	-------------	--------------

49 AUSTRALIA - SOUTH AUSTRALIA - Lucky Bay - Light buoy

Department for Infrastructure and Transport SA

Aus 777 [NE 24/1/2020]

Insert	south cardinal pillar light buoy, Q(6) + LFI 15s 8M, with topmark	33° 43'.14 S	137° 02'.70 E
--------	---	--------------	---------------

50 AUSTRALIA - SOUTH AUSTRALIA - Port Giles to Adrossan - Chart withdrawn; chart limits; chart note; ZOC diagram

Australian Hydrographic Office

Note: position of existing chart notes may vary on certain charts.

Aus 780 [48/2021]

Insert	depth, 8 ₇ m, enclosed by contour	35° 05'.58 S	137° 53'.06 E
	magenta legend, <i>ENC</i> (see <i>Note</i>), centred on	35° 08'.8 S	137° 53'.0 E
Delete	magenta limits with legend, Aus 139, centred on	35° 08'.0 S	137° 50'.0 E

Aus 781 [859/2020]

Insert	continuous line, between	35° 05'.3 S	137° 52'.8 E
		35° 05'.6 S	137° 53'.0 E
		35° 05'.6 S	137° 53'.1 E
		35° 05'.4 S	137° 53'.1 E
	preferred route with legends 092°-272° and <i>Preferred Route</i> (see <i>Note</i>), between	35° 01'.33 S	137° 46'.75 E
	preferred route with legend 065°-245°, between	35° 01'.48 S	137° 52'.12 E
		35° 01'.48 S	137° 52'.12 E
		34° 59'.99 S	137° 56'.00 E
	accompanying ZOC diagram	34° 27'.0 S	138° 29'.0 E
	accompanying block	34° 27'.7 S	137° 57'.3 E
	accompanying chart note, PREFERRED ROUTE	34° 39'.0 S	138° 32'.5 E
	magenta legend, <i>ENC</i> (see <i>Note</i>), centred on	35° 08'.8 S	137° 53'.0 E
Delete	continuous line, between	35° 05'.3 S	137° 52'.8 E
		35° 05'.4 S	137° 53'.1 E
	magenta limits with legend, Aus 139, centred on	34° 30'.0 S	137° 58'.0 E
	magenta limits with legend, Aus 139, centred on	35° 02'.0 S	137° 50'.0 E

51 AUSTRALIA - VICTORIA - Snowy River - Light

Maritime Safety Victoria Notice 001(T)/2021

Aus 357 [861/2020]

Move	light	37° 47'.82 S	148° 32'.05 E
	to	37° 47'.81 S	148° 33'.06 E

52 AUSTRALIA - TASMANIA - Huon River - Hospital Bay - Light buoys

Maritime and Safety Tasmania Notice 228/20

Aus 174 (Port Huon) [1096/2019]

Insert	port lateral cylindrical light buoy, Q.R	43° 09'.69 S	146° 58'.21 E
	port lateral cylindrical light buoy, Q.R	43° 09'.908 S	146° 58'.374 E

53 SOLOMON ISLANDS - Tulaghi Harbour - Sylvia Reef - Beacon

Solomon Islands Maritime Safety Administration

SLB 103 (Tulaghi Harbour) [922/2018]

Insert	isolated danger beacon with topmark	9° 07'.05 S	160° 09'.72 E
--------	-------------------------------------	-------------	---------------

54(T)/2021 AUSTRALIA - NEW SOUTH WALES - Port Jackson - Sydney Harbour - Harbour works
Port Authority of New South Wales Notice 03/2021

Berth pocket improvement works including dredging, will take place at the Overseas Passenger Terminal in the vicinity of position 33° 51'.57 S 151° 12'.61 E.

A hopper barge will be located in the area, assisted by vessels Fern Bay and Molly Grace.

Mariners should navigate with caution.

Chart temporarily affected - Aus 200 - Aus 202

55(T)/2021 AUSTRALIA - QUEENSLAND - Ashmore Reef - Chart withdrawn
Former Notice - 435(T)/2019 is cancelled
Australian Hydrographic Office

Cancel this notice on receipt.

Chart formerly affected - Aus 44

56(T)/2021 AUSTRALIA - QUEENSLAND - Fraser Island - Elbow Point - Shoaling
Navionics

Depths of less than 1m have been reported in an area bounded by the following positions:

25° 44'.40 S 152° 59'.29 E

25° 44'.71 S 152° 59'.37 E

25° 44'.89 S 153° 00'.30 E

25° 44'.66 S 153° 00'.38 E

25° 44'.40 S 152° 59'.77 E.

Mariners are advised to navigate with caution in the area.

Charts will be updated in due course.

Chart temporarily affected - Aus 240

57(T)/2021 AUSTRALIA - QUEENSLAND - Gladstone - Auckland Channel to Clinton Channel - Navais
Former Notice - 812(P)/2020 is cancelled
UKHO

Cancel this notice on receipt.

Chart formerly affected - Aus 244 - Aus 245 - Aus 271

58(T)/2021 AUSTRALIA - QUEENSLAND - Gladstone - Shoaling
Former Notice - 65(P)/2020 is cancelled
UKHO

Cancel this notice on receipt.

Chart formerly affected - Aus 244 - Aus 271

59(T)/2021 AUSTRALIA - QUEENSLAND - Gladstone - Drilling operations completed
Former Notice - 551(T)/2020 is cancelled
UKHO

Cancel this notice on receipt.

Chart formerly affected - Aus 244 - Aus 245 - Aus 247 - Aus 271 - Aus 272

60(T)/2021 AUSTRALIA - QUEENSLAND - Gladstone - Auckland Point Wharves - Harbour works completed
Former Notice - 157(T)/2020 is cancelled
 UKHO

Cancel this notice on receipt.

Chart formerly affected - Aus 244 - Aus 271

61(T)/2021 AUSTRALIA - QUEENSLAND - Gladstone - South Trees Island - Scientific instrument
Former Notice - 426(T)/2020 is cancelled
 UKHO

Cancel this notice on receipt.

Chart formerly affected - Aus 244 - Aus 245 - Aus 246

62(T)/2021 AUSTRALIA - QUEENSLAND - Gladstone - South Trees Island - Scientific instrument
 Maritime Safety Queensland Notice 171(T)/2020

A scientific instrument marked by a light buoy, *Fl. Y. 6s*, exists in position 23° 51'.71 S 151° 19'.62 E.

Chart temporarily affected - Aus 245 - Aus 246

63(T)/2021 AUSTRALIA - QUEENSLAND - Gladstone - Auckland Point Wharves - Harbour works completed
Former Notice - 834(T)/2019 is cancelled
 UKHO

Cancel this notice on receipt.

Chart formerly affected - Aus 244 - Aus 271

64(T)/2021 AUSTRALIA - QUEENSLAND - Gladstone - Auckland Point Wharves - Harbour works
 Maritime Safety Queensland 360(T)/2019

Construction of a mooring dolphin is in progress off the eastern end of berth No 4 (23° 50'.02 S 151° 15'.91 E) by vessel *AMS Shine* and the barge *M1201* and support vessels.

Vessels and hazards will display appropriate lights and shapes.

Vessels will monitor VHF Ch 13.

Mariners are advised to navigate with caution in the area.

Chart temporarily affected - Aus 245

65(T)/2021 AUSTRALIA - QUEENSLAND - Gladstone - Boyne Island to Worthington Island - Scientific instruments recovered
Former Notice - 660(T)/2020 is cancelled
 UKHO

Cancel this notice on receipt.

Chart formerly affected - Aus 245 - Aus 246 - Aus 247 - Aus 271 - Aus 819

66(T)/2021 AUSTRALIA - QUEENSLAND - Gladstone - Boyne Island to Worthington Island - Scientific instruments
Maritime Safety Queensland Notice 291(T)/2020

Special light buoys, *Fl. Y. 6s*, exist in the following positions:

23° 42'.87 S 151° 08'.57 E

23° 47'.03 S 151° 18'.39 E

23° 47'.73 S 151° 14'.31 E

23° 48'.29 S 151° 12'.47 E

23° 54'.99 S 151° 21'.57 E.

Chart temporarily affected - Aus 245 - Aus 246 - Aus 247

67(T)/2021 AUSTRALIA - QUEENSLAND - Gladstone - Scientific instruments

Former Notice - 918(T)/2020 is cancelled

UKHO

Cancel this notice on receipt.

Chart formerly affected - Aus 245 - Aus 272

68(T)/2021 AUSTRALIA - QUEENSLAND - Gladstone - Scientific instruments

Maritime Safety Queensland Notice 390(T)/2020

Special cylindrical light buoys, *Fl. Y. 6s*, exist in the following positions:

23° 45'.53 S 151° 09'.49 E

23° 45'.92 S 151° 10'.87 E

23° 44'.71 S 151° 09'.62 E.

Chart temporarily affected - Aus 245 - Aus 247

69(T)/2021 AUSTRALIA - QUEENSLAND - Gladstone Boat Harbour - Dredging operations completed

Former Notice - 427(T)/2020 is cancelled

UKHO

Cancel this notice on receipt.

Chart formerly affected - Aus 244 - Aus 245 - Aus 271

70(T)/2021 AUSTRALIA - QUEENSLAND - Moreton Bay - Coochiemudlo Island - Light beacon relit

Former Notice - 665(T)/2020 is cancelled

Maritime Safety Queensland

Cancel this notice on receipt.

Chart formerly affected - Aus 236

71(T)/2021 AUSTRALIA - QUEENSLAND - Moreton Bay - Bramble Bay - Pine River - Light beacon relit

Former Notice - 666(T)/2020 is cancelled

Maritime Safety Queensland

Cancel this notice on receipt.

Chart formerly affected - Aus 236

72(T)/2021 AUSTRALIA - QUEENSLAND - Moreton Bay - Manly Boat Harbour - Light beacon destroyed

Maritime Safety Queensland Notice 008(T)/2021

The port lateral light beacon, *Fl. R. 3s No2* (27° 26'.66 S 153° 12'.46 E), has been destroyed.

Chart temporarily affected - Aus 236

73(T)/2021 AUSTRALIA - QUEENSLAND - Moreton Bay - Mud Island - Light buoy off station
Maritime Safety Queensland 007(T)/2021

The west cardinal light buoy, Q(9) 15s (27° 19'.90 S 153° 13'.95 E), is off station.

Chart temporarily affected - Aus 236

74(T)/2021 AUSTRALIA - QUEENSLAND - Pumicestone Channel - Wreck, light buoy
Maritime Safety Queensland 466(T)/2020

A wreck marked by a special conical light buoy, Fl.Y.2-5s, exists in position 26° 48'.39 S 153° 07'.51 E.

Chart temporarily affected - Aus 235

75(T)/2021 PAPUA NEW GUINEA - Saibai Island - Shoaling
HMAS *Mermaid*

Latest survey indicates shoaler depths than those charted exist in an area bounded by the following positions:

9° 21'.53 S 142° 37'.20 E
9° 21'.01 S 142° 41'.00 E
9° 20'.94 S 142° 44'.07 E
9° 20'.12 S 142° 43'.90 E
9° 20'.15 S 142° 39'.81 E
9° 20'.66 S 142° 36'.94 E.

Mariners are advised to navigate with caution in the area.

Charts will be updated in due course.

Chart temporarily affected - Aus 840 - Aus 841

76(T)/2021 AUSTRALIA - TORRES STRAIT - Great North East Channel - Survey operations
Maritime Safety Queensland Notice 005(T)/2021

Commencing 1st February, 2021, MV *Offshore Guardian* is conducting survey operations between the following positions:

09° 48'.7 S 143° 04'.4 E
09° 48'.7 S 143° 20'.4 E
09° 25'.9 S 143° 37'.3 E
09° 21'.6 S 143° 30'.8 E
09° 30'.0 S 143° 16'.2 E.

Tide Gauges exist in the following positions:

09° 45'.5 S 143° 15'.4 E
09° 38'.0 S 143° 27'.0 E
09° 26'.5 S 143° 35'.1 E
09° 37'.2 S 143° 17'.5 E
09° 29'.8 S 143° 19'.7 E
09° 41'.8 S 143° 09'.4 E.

Mariners are advised to navigate with caution in the area.

Chart temporarily affected - Aus 837 - Aus 839 - Aus 840

77(T)/2021 AUSTRALIA - WESTERN AUSTRALIA - Geraldton - Champion Bay - Scientific instruments
Mid West Ports 01/2021

Scientific instruments exist on the seabed in the following positions:

28° 44'.18 S 114° 36'.74 E
28° 45'.37 S 114° 36'.61 E.

Mariners are advised to navigate with caution in the area.

Chart temporarily affected - Aus 81

78(T)/2021 AUSTRALIA - WESTERN AUSTRALIA - Rankin Bank - Drill rig northeastwards moved

Former Notice - 881(T)/2020 is cancelled
 MODU *Ocean Apex*

Cancel this notice on receipt.

Chart formerly affected - Aus 327 - Aus 4723 (INT 723)

79(T)/2021 AUSTRALIA - SOUTH AUSTRALIA - Backstairs Passage - Survey operations

Precision Hydrographic Services

Commencing on or around 1st February, 2021, survey vessels *Ocean Dynasty* and *Workboat 1* is conducting survey operations between the following positions:

35° 33'.9 S 137° 55'.9 E
 35° 45'.7 S 137° 58'.5 E
 35° 47'.9 S 138° 07'.7 E
 36° 05'.4 S 138° 15'.7 E
 36° 00'.8 S 138° 27'.1 E
 35° 36'.3 S 138° 04'.9 E
 35° 33'.5 S 137° 58'.4 E.

Vessels will display appropriate shapes and colours.

Tide Gauges marked by lit mooring buoys, *Fl.Y.1-5s* exist in the following positions:

35° 35'.9 S 137° 57'.3 E
 35° 46'.4 S 138° 11'.5 E
 36° 04'.3 S 138° 17'.5 E
 35° 48'.2 S 138° 07'.2 E.

Mariners are advised to navigate with caution in the area.

Chart temporarily affected - Aus 346 - Aus 347 - Aus 780

80(T)/2021 AUSTRALIA - SOUTH AUSTRALIA - Gulf St Vincent - Rogues Point - Artificial reef

Former Notice - 123(T)/2018 is cancelled
 Australian Hydrographic Office

Cancel this notice on receipt.

Chart formerly affected - Aus 139 - Aus 781

81(T)/2021 AUSTRALIA - SOUTH AUSTRALIA - Gulf St Vincent - Rogues Point - Artificial reef

Department of Planning, Transport and Infrastructure SA Notice 9/2017

An artificial reef is being developed in an area bounded by the following positions:

34° 30'.63 S 137° 53'.95 E
 34° 30'.63 S 137° 54'.12 E
 34° 30'.47 S 137° 54'.13 E
 34° 30'.47 S 137° 53'.95 E.

A lit raft exists in position 34° 30'.59 S 137° 53'.99 E.

Chart temporarily affected - Aus 781

82(T)/2021 AUSTRALIA - SOUTH AUSTRALIA - Kangaroo Island - Kingscote - Chart Withdrawn

Former Notice - 499(T)/2020 is cancelled
 Australian Hydrographic Office

Cancel this notice on receipt.

Chart formerly affected - Aus 129

83(T)/2021 AUSTRALIA - VICTORIA - Port Phillip - Scientific instrument recovered

Former Notices - 28(T)/2021, 33(T)/2021 are cancelled
Victorian Ports Corporation (Melbourne) NTM 009(T)/2021

Cancel this notice on receipt.

Chart formerly affected - Aus 143 - Aus 155

84(T)/2021 AUSTRALIA - VICTORIA - Port Phillip - Yarra River - Short Road Wharf - Harbour works complete

Former Notice - 130(T)/2018 is cancelled
Victorian Regional Channels Authority Notice 004(T)/2021

Cancel this notice on receipt.

Chart formerly affected - Aus 154

85(T)/2021 AUSTRALIA - VICTORIA - Port Phillip - South Channel - Shoaling; virtual AIS

Victorian Ports Corporation (Melbourne) Notice 015(T)/2021

Shoaling, with a least depth of 15.3m, marked by a special virtual AIS exists in position 38° 18'.14 S 144° 43'.75 E.

Mariners are advised to navigate north or south of this position and navigate with caution in the area.

Chart temporarily affected - Aus 144 - Aus 150 - Aus 158

86(T)/2021 AUSTRALIA - VICTORIA - Port Phillip - Pinnacle Channel - Light buoy off station

Parks Victoria Notice 005(T)/2021

The special light buoy, *Fl(4) Y.12s* (38° 14'.63 S 144° 50'.34 E), is off station.

Chart temporarily affected - Aus 158

87(T)/2021 AUSTRALIA - TASMANIA - Bass Strait - King Island - Scientific instruments

EGS Survey Pty Ltd

Commencing on or around 1st February 2021, Vessel *Pacific Crest* is conducting survey operations in an area bounded by the following positions:

39° 45'.00 S 143° 40'.00 E
39° 45'.00 S 144° 30'.00 E
39° 12'.00 S 144° 30'.00 E
39° 12'.00 S 143° 40'.00 E.

Tide gauges, marked by special light buoys, *Fl. Y.2s*, exist in the following positions:

39° 39'.60 S 144° 07'.10 E
39° 13'.50 S 144° 28'.70 E
43° 07'.10 S 147° 40'.80 E
39° 11'.80 S 143° 40'.10 E
39° 34'.50 S 143° 39'.50 E
39° 35'.60 S 143° 56'.00 E
39° 40'.80 S 143° 51'.70 E
39° 32'.10 S 144° 01'.30 E
39° 36'.60 S 144° 26'.40 E.

Mariners are advised to navigate with caution in the area.

Chart temporarily affected - Aus 171 - Aus 349 - Aus 789 - Aus 796

II

HYDROGRAPHIC REPORTS

NIL

To accompany Australian Notice to Mariners 44/2021

ELECTRONIC NAVIGATIONAL CHART (ENC)

Larger scale ENC content exists in this area. When using electronic navigation systems, certain vessels (e.g. restricted by depth or size) may benefit from the additional level of detail shown in the largest scale ENC product available.

Note for chart Aus 314

To accompany Australian Notice to Mariners 44/2021

ELECTRONIC NAVIGATIONAL CHART (ENC)

Larger scale ENC content exists in this area. When using electronic navigation systems, certain vessels (e.g. restricted by depth or size) may benefit from the additional level of detail shown in the largest scale ENC product available.

Note for chart Aus 319

To accompany Australian Notice to Mariners 50/2021

PREFERRED ROUTE

This is a preferred route and has not been surveyed in accordance with the IMO/IHO standards for recommended tracks, but is the preferred route for vessels having regard to charted depths. The attention of vessels meeting on the preferred route is drawn to the International Regulations for Preventing Collisions at Sea (1972), particularly Rules 18 and 28 regarding vessels constrained by their draught.

Note for chart Aus 781

To accompany Australian Notice to Mariners 44/2021

ELECTRONIC NAVIGATIONAL CHART (ENC)

Larger scale ENC content exists in this area. When using electronic navigation systems, certain vessels (e.g. restricted by depth or size) may benefit from the additional level of detail shown in the largest scale ENC product available.

Note for chart Aus 317

To accompany Australian Notice to Mariners 46/2021

ELECTRONIC NAVIGATIONAL CHART (ENC)

Larger scale ENC content exists in this area. When using electronic navigation systems, certain vessels (e.g. restricted by depth or size) may benefit from the additional level of detail shown in the largest scale ENC product available.

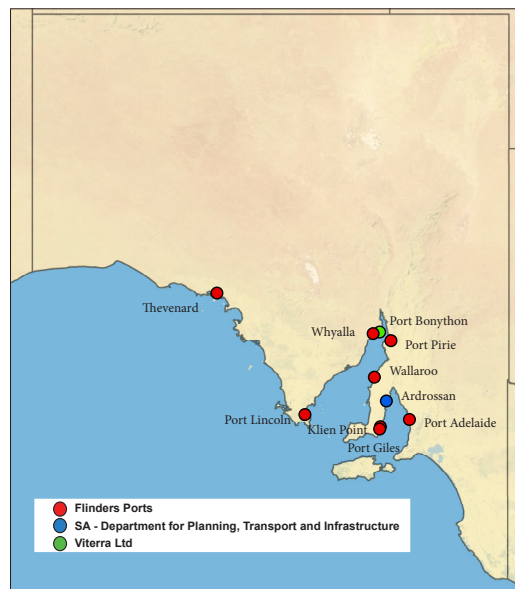
Note for chart Aus 322

11.10 SOUTH AUSTRALIA

- South Australia (SA) has one major trading port, nine regional ports and a number of non-trading community ports. The trading ports have been privatised and are managed by private companies. The main ports of Port Adelaide, Port Lincoln, Port Pirie, Port Giles, Thevenard, Klein Point and Wallaroo are managed by Flinders Ports which has established operating guidelines for users of port facilities including; coordination of shipping services, pilotage, towage, mooring labour, water taxi services, fresh water supplies, power, waste disposal, handling of dangerous cargoes as wells as port charges.

11.10.1 MARITIME INFORMATION

- Maritime information including SA NtM is published by the Department for Planning, Transport and Infrastructure on the SA Government website.



Website:	www.sa.gov.au/topics/transport-travel-and-motoring/boating-and-marine
----------	--

11.10.2 PORTS

Ardrossan, SA (34° 26'S, 137° 55'E)	
UN/LOCODE: AU ARD	
Paper charts:	Aus 139, 781
AusENC cells:	AU5ARD01, AU435137
Security Regulated Port:	Yes
Port Authority and Pilot:	Viteria Ltd
Website:	www.viteria.com.au
Email:	viteria.aus@viteria.com
Telephone:	+61 8 8211 7199 / 1800 018 205
Pilotage:	Compulsory
Pilot Boarding Ground:	34° 27.40'S, 137° 56.80'E
Communication	"Adelaide VTS"
Call up, emergencies:	VHF Channel 16
Port Operations:	VHF Channel 16, 06, 12,
Notice of ETA:	14 days
For more information:	www.viteria.com.au/index.php/ports-and-terminals/

Klein Point, SA (34° 58'S, 137° 46'E)	
UN/LOCODE: AU KLP	
Paper chart:	Aus 139, 781
AusENC cells:	AU5KLP01, AU435137
Security Regulated Port:	No
Port Authority:	Flinders Ports
Website:	www.flindersports.com.au
Email:	flindersports@flindersports.com.au
Telephone:	+61 8 8447 0611
Pilotage:	Not Compulsory
Port Operations	
Telephone:	+61 8 8248 3505
Communication:	"Adelaide VTS"
Call up, emergencies:	VHF Channel 16
Port Operations:	VHF Channel 16, 12, 13, 67
Tugs:	VHF Channel 06, 08
For more information:	www.flindersports.com.au/ports-facilities/klein-point/

To accompany Australian Notice to Mariners 41/2021

Port Adelaide, SA (34° 51'S, 138° 30'E)	
UN/LOCODE: AU ADL	
Paper charts:	Aus 130, 137, 138, 781
AusENC cells:	AU5ADL01, AU435138
Security Regulated Port:	Yes
Port Authority:	Flinders Ports
Website:	www.flindersports.com.au
Email:	flindersports@flindersports.com.au
Telephone:	+61 8 8447 0611
Pilotage:	Compulsory >35 m LOA
Port Operations	
Telephone:	+61 8 8248 3505
Pilot Boarding Ground:	34° 49'S, 138° 20'E
Communication:	"Adelaide VTS"
Call up, emergencies:	VHF Channel 16
Port Operations:	VHF Channel 16, 12, 13, 67
Tugs:	VHF Channel 06, 08
Notice of ETA:	24 hours
For more information:	www.flindersports.com.au/ports-facilities/port-adelaide/

Port Giles, SA (35° 01.5'S, 137° 46'E)	
UN/LOCODE: AU PGI	
Paper chart:	Aus 139, 781
AusENC cells:	AU5PGI01, AU436137
Security Regulated Port:	Yes
Port Authority:	Flinders Ports
Website:	www.flindersports.com.au
Email:	flindersports@flindersports.com.au
Telephone:	+61 8 8447 0611
Pilotage:	Compulsory >35 m LOA
Operations:	
Telephone:	+61 8 8248 3505
Pilot Boarding Ground:	35° 01.40'S, 137° 49.1'E
Communication:	"Adelaide VTS"
Call up, emergencies:	VHF Channel 16
Operations:	VHF Channel 16, 12, 13, 67
Tugs:	VHF Channel 06, 08
Notice of ETA:	24 hours
More information:	www.flindersports.com.au/ports-facilities/port-giles/

Port Bonython, SA (32° 59'S, 137° 45'E)	
UN/LOCODE: AU PBY	
Paper chart:	Aus 136, 135
AusENC cells:	AU5PBY01, AU433137, AU434137
Security Regulated Port:	Yes
Port Authority:	Department of Planning, Transport and Infrastructure
Website:	www.dpti.sa.gov.au
Email:	dpti.commercialmarineservices@sa.gov.au
Telephone:	+61 8 8343 2222
Pilotage:	Compulsory >35 m LOA
Port Operator:	Santos Pty Limited
Telephone:	+61 8 8649 0100
Fax:	+61 8 8649 0200
Pilots:	
Telephone:	+61 8 8632 1455
Fax:	+61 8 8632 5918
Pilot Boarding Grounds:	33° 10'S, 137° 39.2'E > 14m draught 33° 04.55'S, 137° 45.5'E < 14m draught 33° 03.8'S, 137° 38.8'E < 14m draught
Communication:	"Adelaide VTS"
Call up, emergencies:	VHF Channel 16
Operations:	VHF Channel 16, 12
Pilots:	VHF Channel 16, 06, 08, 12
Notice of ETA:	48 hours

Port Lincoln, SA (34° 43'S, 135° 52'E)	
UN/LOCODE: AU PLO	
Paper charts:	Aus 134, 133
AusENC cells:	AU5PLO01, AU435135
Security Regulated Port:	Yes
Port Authority:	Flinders Ports
Website:	www.flindersports.com.au
Email:	flindersports@flindersports.com.au
Telephone:	+61 8 8447 0611
Pilotage:	Compulsory >35 m LOA
Operations:	
Telephone:	+61 8 8248 3505
Pilot Boarding Ground:	34° 39.60'S, 135° 57.85'E
Communication:	"Adelaide VTS"
Call up, emergencies:	VHF Channel 16
Operations:	VHF Channel 16, 12, 13, 67
Tugs:	VHF Channel 06, 08
Notice of ETA:	24 hours
More Information:	www.flindersports.com.au/ports-facilities/port-lincoln/

To accompany Australian Notice to Mariners 41/2021

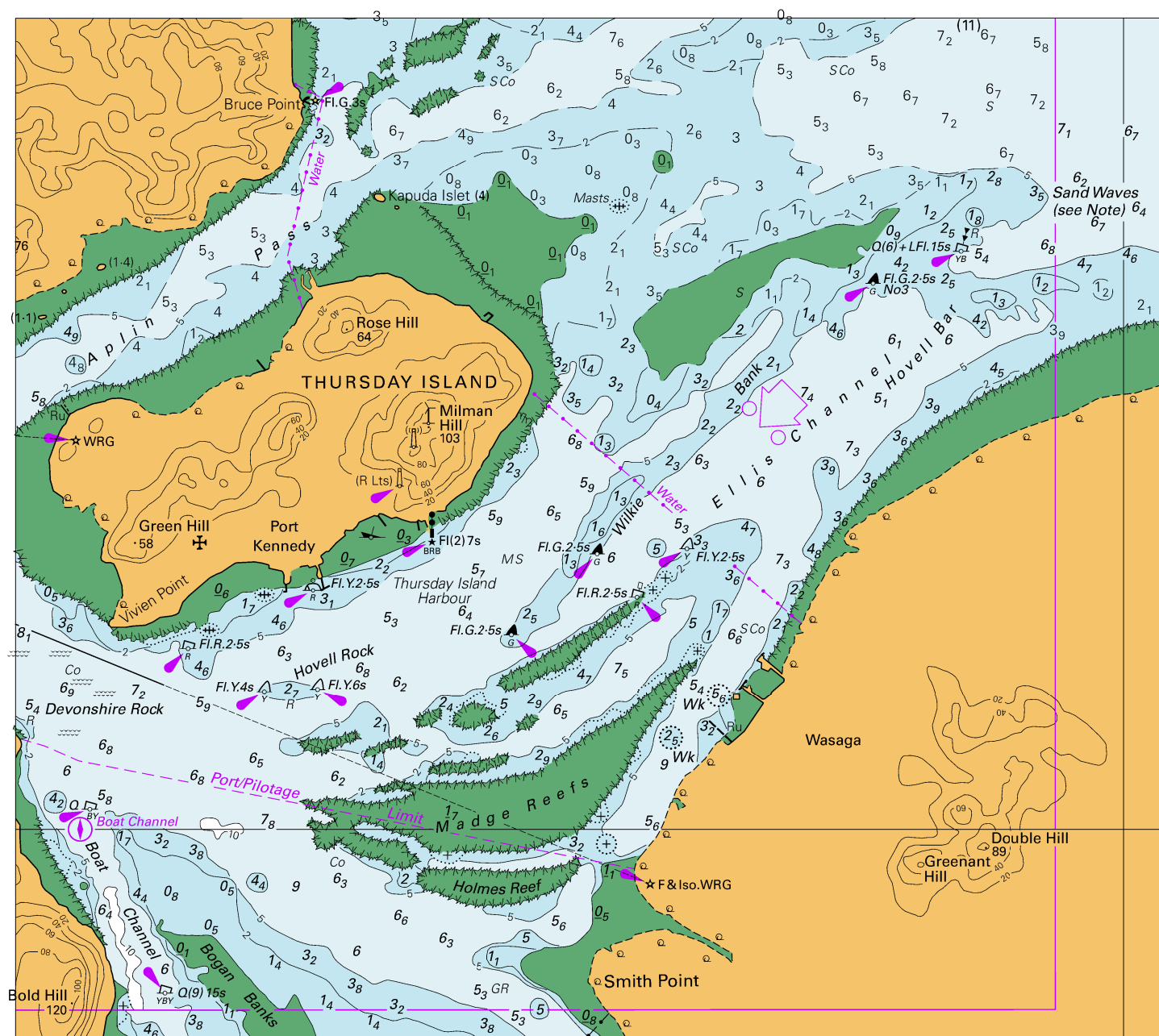
Port Pirie, SA (33° 10'S, 138° 01'E)	
UN/LOCODE: AU PPI	
Paper chart:	Aus 136
AusENC cells:	AU5PPI01, AU434138, AU434137
Security Regulated Port:	Yes
Port Authority:	Flinders Ports
Website:	www.flindersports.com.au
Email:	flindersports@flindersports.com.au
Telephone:	+61 8 8447 0611
Pilotage:	Compulsory >35 m LOA
Operations:	
Telephone:	+61 8 8248 3505
Pilot Boarding Ground:	33° 04.55'S, 137° 45.50'E
Communication:	"Adelaide VTS"
Call up, emergencies:	VHF Channel 16
Operations:	VHF Channel 16, 12, 13, 67
Tugs:	VHF Channel 06, 08
Notice of ETA:	24 hours
More information:	www.flindersports.com.au/ports-facilities/port-pirie/

Thevenard, SA (32° 09'S, 133° 39'E)	
UN/LOCODE: AU THE	
Paper charts:	Aus 120
AusENC cells:	AU5THE01, AU433133
Security Regulated Port:	Yes
Port Authority:	Flinders Ports
Website:	www.flindersports.com.au
Email:	flindersports@flindersports.com.au
Telephone:	+61 8 8447 0611
Pilotage:	Compulsory >35 m LOA
Operations:	
Telephone:	+61 8 8248 3505
Pilot Boarding Ground:	32° 12.6'S, 133° 33.7'E
Communication:	"Adelaide VTS"
Call up, emergencies:	VHF Channel 16
Operations:	VHF Channel 16, 12, 13, 67
Tugs:	VHF Channel 06, 08
Notice of ETA:	24 hours
More information:	www.flindersports.com.au/ports-facilities/thevenard/

Wallaroo, SA (33° 56'S, 137° 37'E)	
UN/LOCODE: AU WAL	
Paper chart:	Aus 133, 777
AusENC cells:	AU5WAL01, AU434137
Security Regulated Port:	Yes
Port Authority:	Flinders Ports
Website:	www.flindersports.com.au
Email:	flindersports@flindersports.com.au
Telephone:	+61 8 8447 0611
Pilotage:	Compulsory >35 m LOA
Operations:	
Telephone:	+61 8 8248 3505
Pilot Boarding Ground:	33° 54.5'S, 137° 31.6'E
Communication:	"Adelaide VTS"
Call up, emergencies:	VHF Channel 16
Operations:	VHF Channel 16, 12, 13, 67
Tugs:	VHF Channel 06, 08
Notice of ETA:	72 hours
More information:	www.flindersports.com.au/ports-facilities/wallaroo/

Whyalla, SA (33° 01'S, 137° 35'E)	
UN/LOCODE: AU WYA	
Paper charts:	Aus 135, 136, 778
AusENC cells:	AU5WYA01, AU434137
Security Regulated Port:	Yes
Port Authority:	Department of Planning, Transport and Infrastructure
Website:	www.dpti.sa.gov.au
Email:	dpti.commercialmarineservices@sa.gov.au
Telephone:	+61 8 8343 2222
Operator:	OneSteel Manufacturing Pty Ltd (trading as SIMEC Mining)
Website:	www.simec.com/mining/
Telephone:	+61 8 8640 4444
Pilotage:	Compulsory >35 m LOA
Pilot	
Telephone:	+61 8 8447 0903
Pilot Boarding Ground:	33° 03.8'S, 137° 38.8'E
Communication:	"Adelaide VTS"
Call up, emergencies:	VHF Channel 16
Pilots:	VHF Channel 08
Notice of ETA:	48 hours

To accompany Australian Notice to Mariners 43/2021

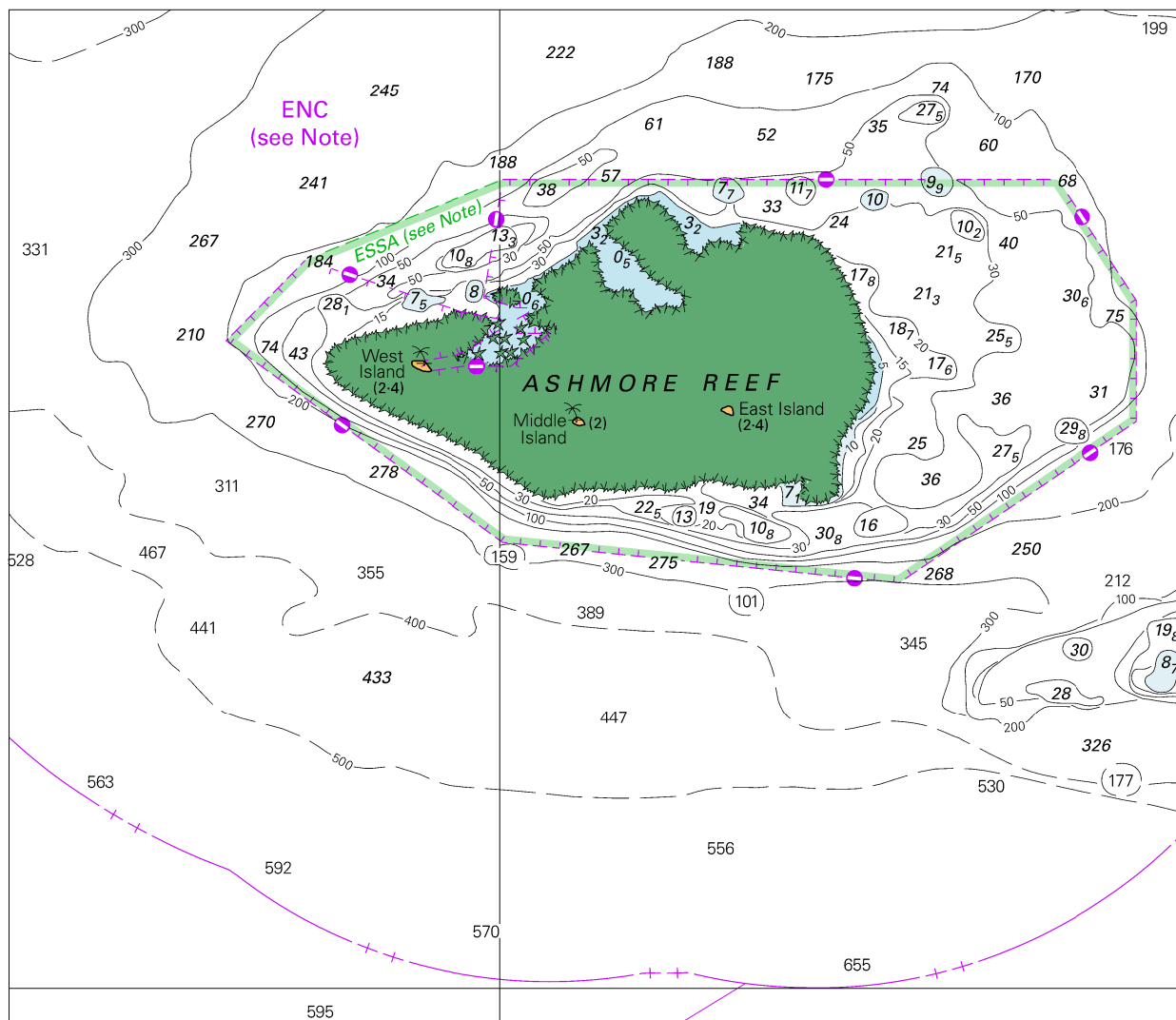


Block for chart Aus 293

© Commonwealth of Australia 2020

(188.8 x 145.1mm)

To accompany Australian Notice to Mariners 44/2021

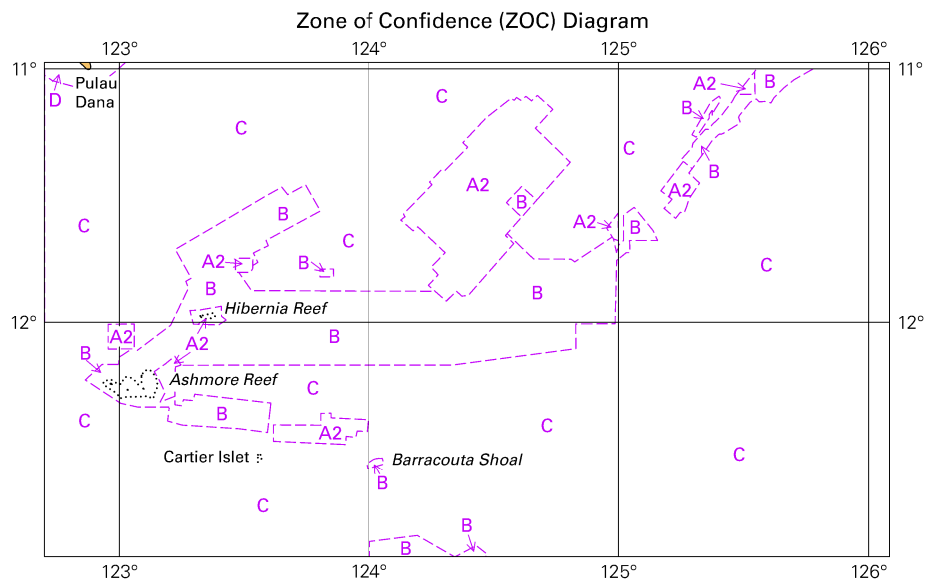


Block for chart Aus 314

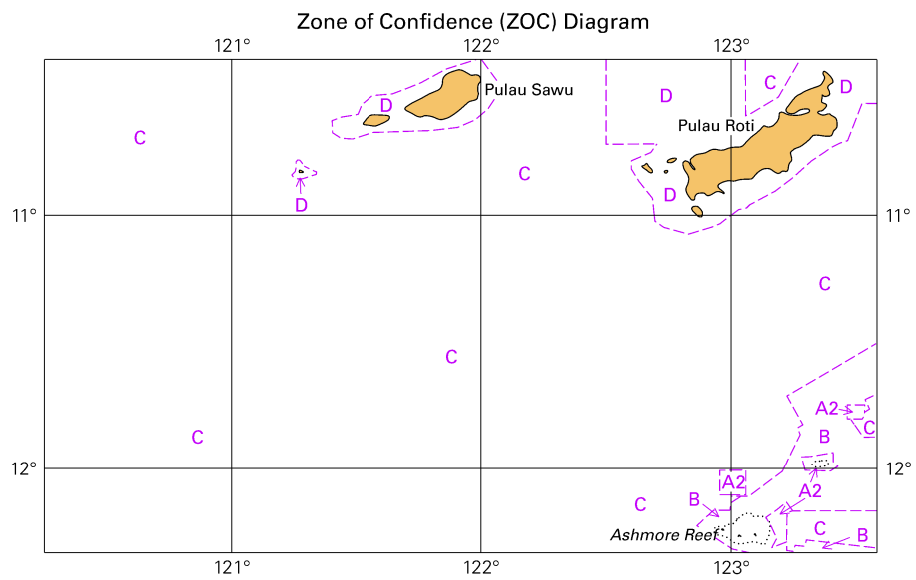
© Commonwealth of Australia 2021

(163.1 x 140.9mm)

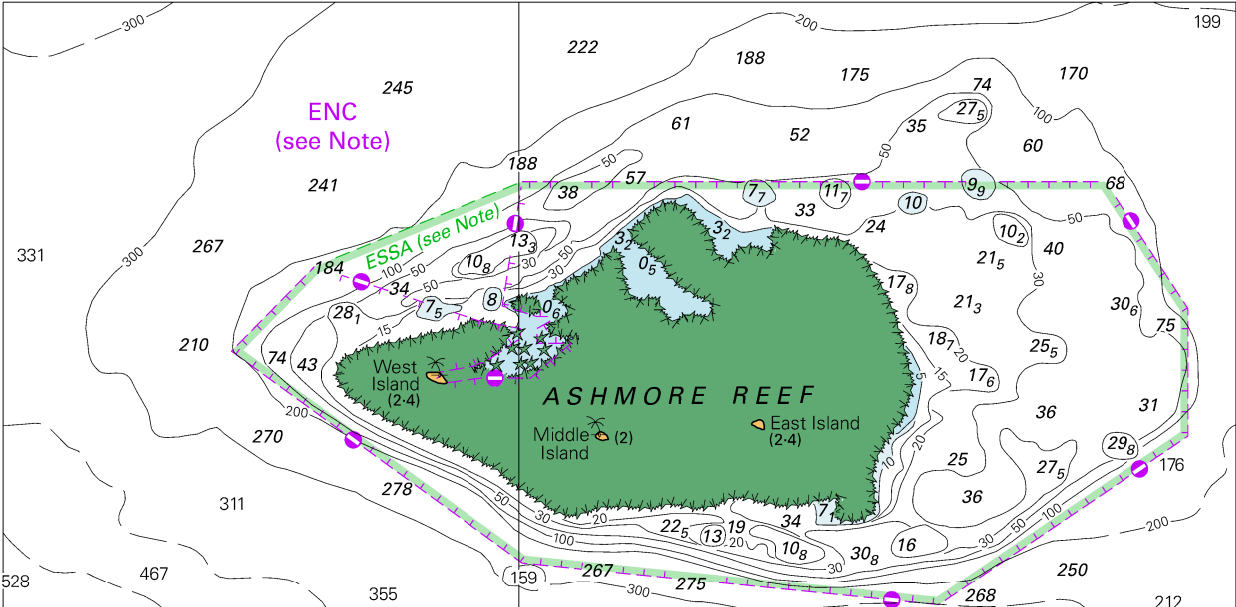
To accompany Australian Notice to Mariners 44/2021



To accompany Australian Notice to Mariners 44/2021



To accompany Australian Notice to Mariners 44/2021

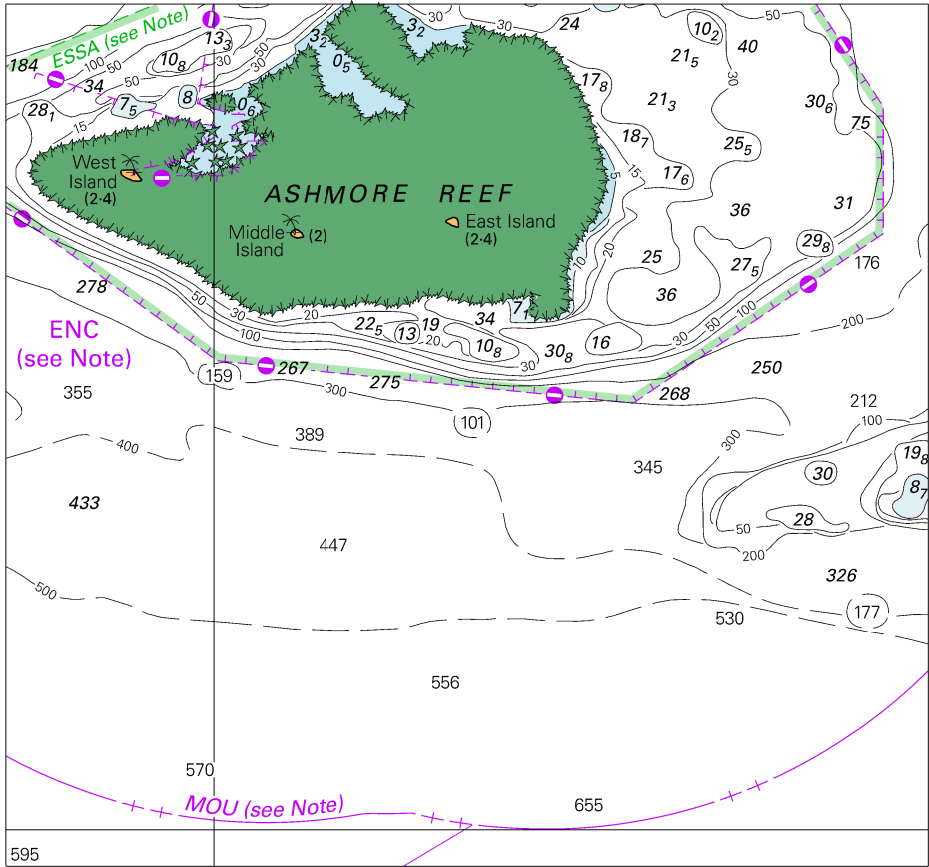


Block for chart Aus 317

© Commonwealth of Australia 2021

(163.1 x 80.1mm)

To accompany Australian Notice to Mariners 44/2021

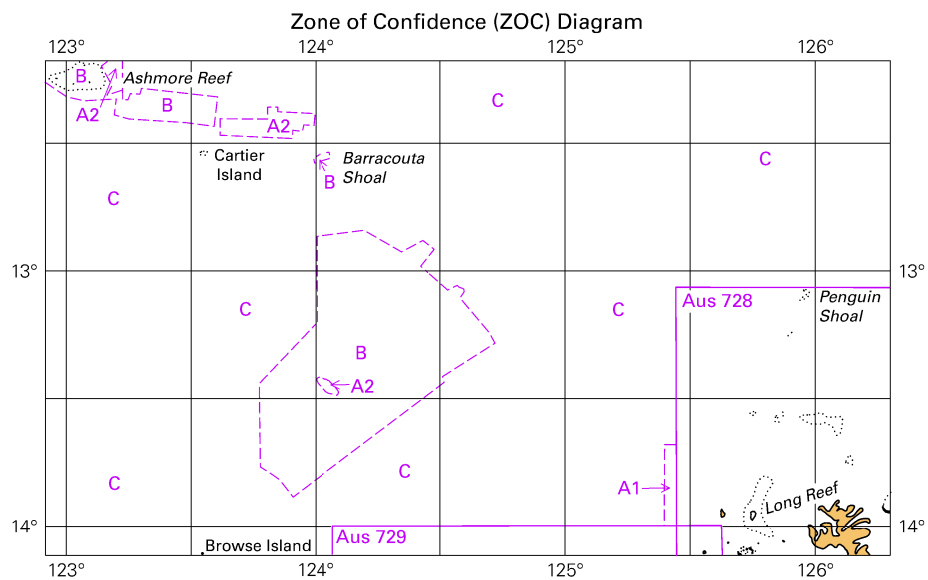


Block for chart Aus 319

© Commonwealth of Australia 2021

(121.9 x 114.0mm)

To accompany Australian Notice to Mariners 44/2021

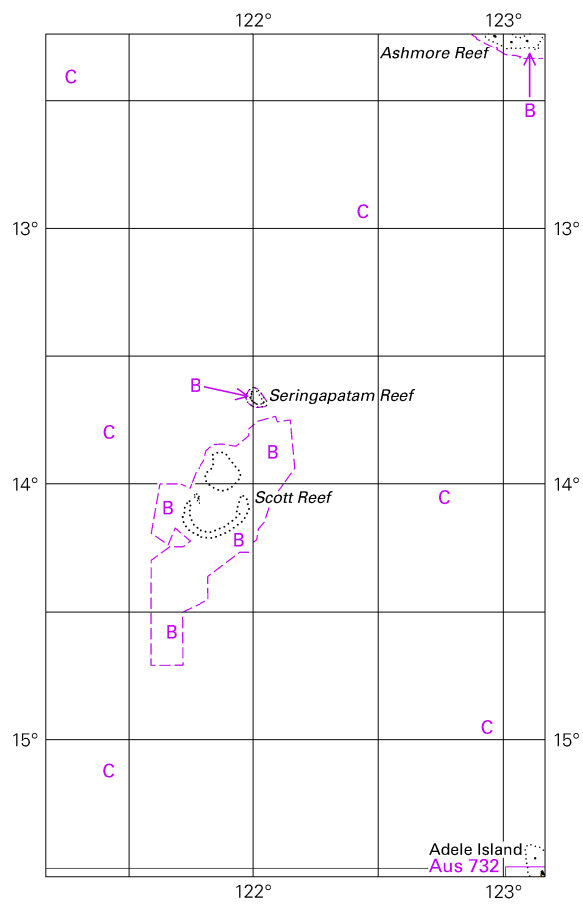


Block for chart Aus 319

© Commonwealth of Australia 2021

(111.7 x 65.4mm)

To accompany Australian Notice to Mariners 46/2021

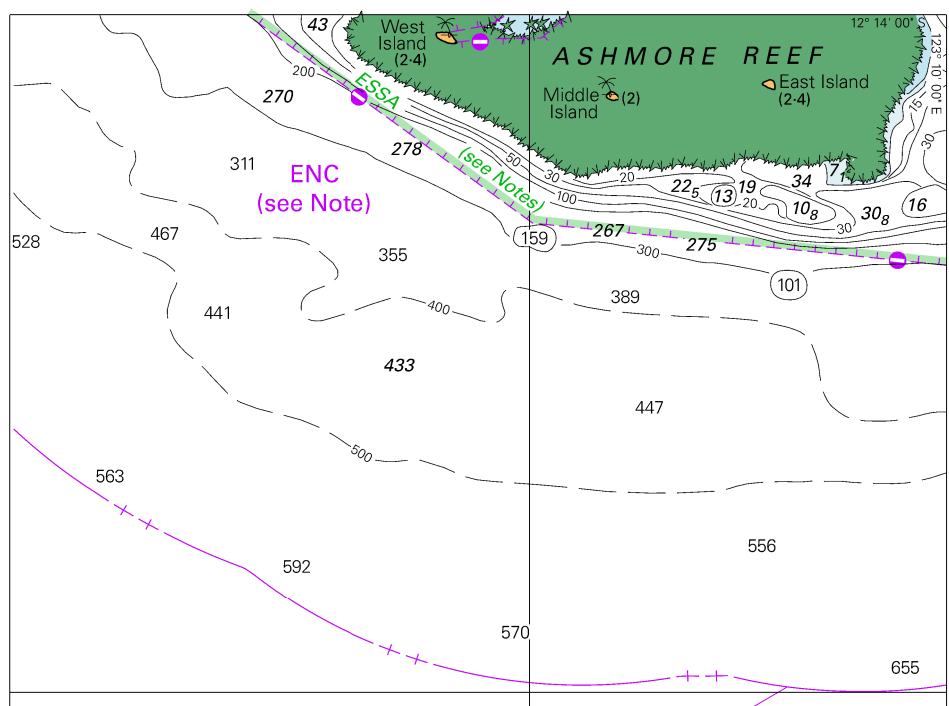


© Commonwealth of Australia 2021

Block for chart Aus 322

(66.0 x 111.5 mm)

To accompany Australian Notice to Mariners 46/2021

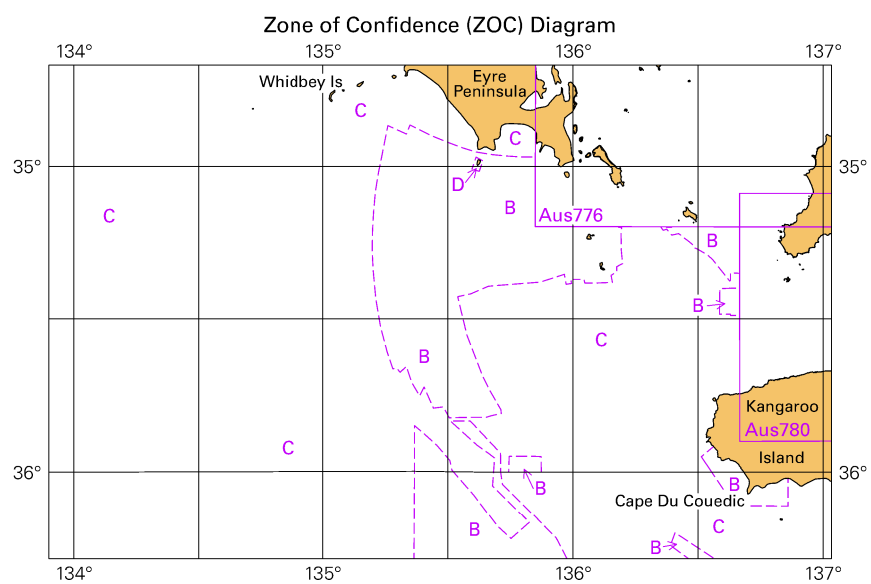


Block for chart Aus 322

© Commonwealth of Australia 2021

(123.8 x 91.5mm)

To accompany Australian Notice to Mariners 47/2021

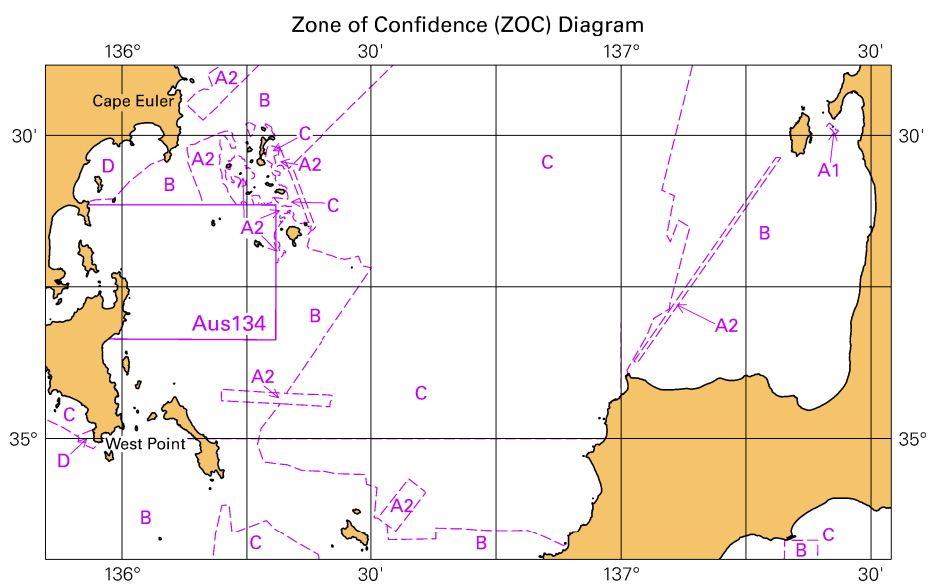


Block for chart Aus 343

(103.4 x 65.2mm)

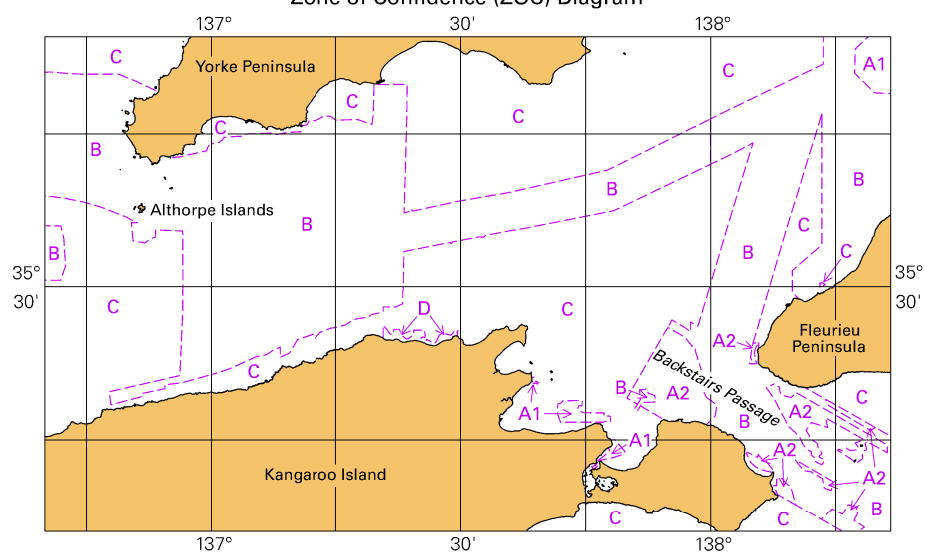
© Commonwealth of Australia 2021

To accompany Australian Notice to Mariners 47/2021



To accompany Australian Notice to Mariners 47/2021

Zone of Confidence (ZOC) Diagram

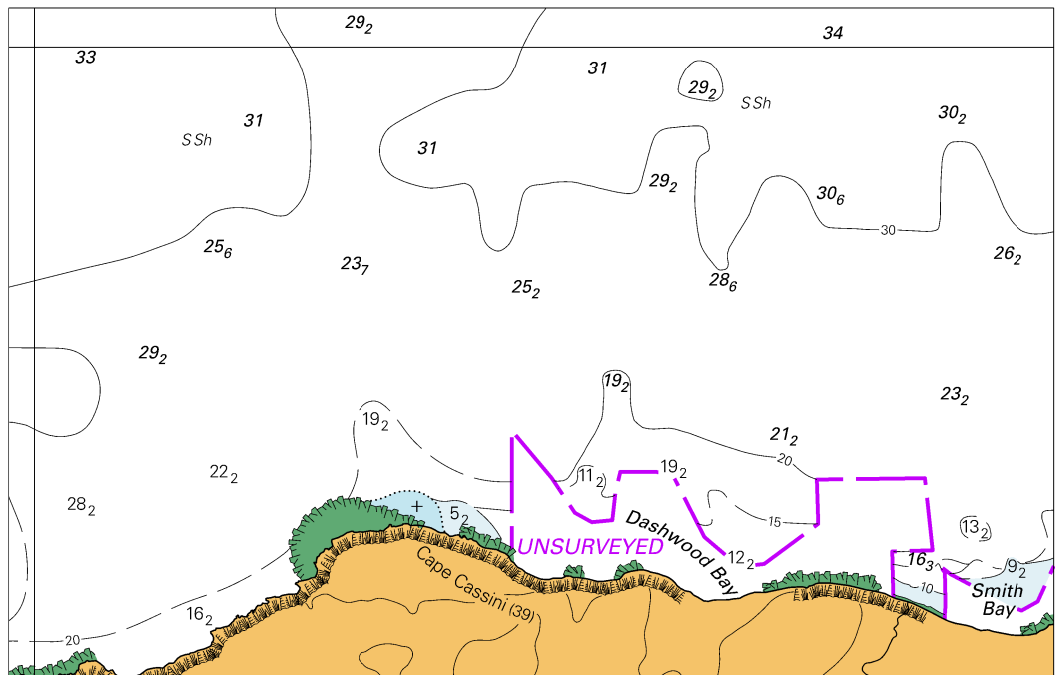


© Commonwealth of Australia 2021

Block for chart Aus 780

(111.8 x 65.4mm)

To accompany Australian Notice to Mariners 48/2021

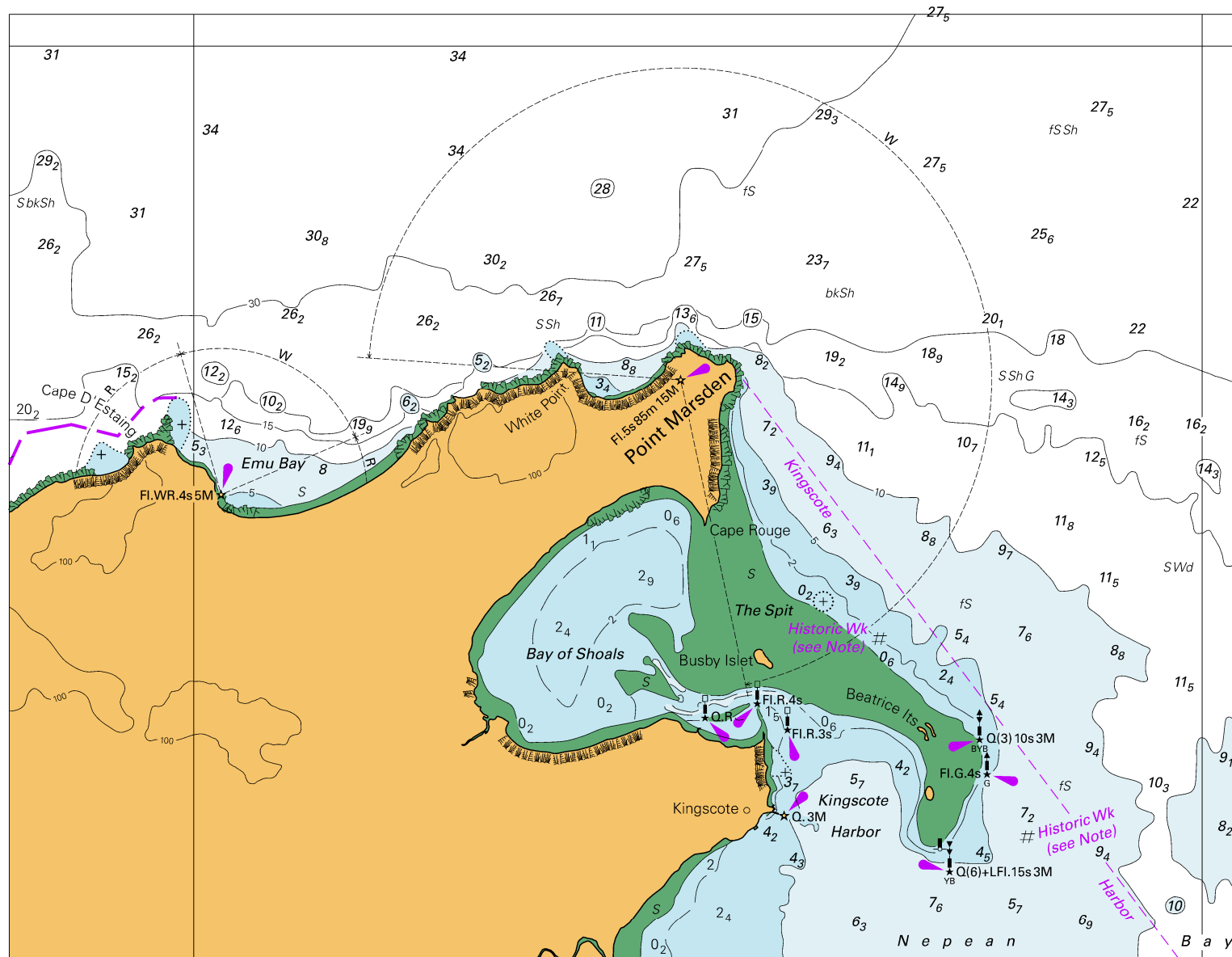


Block A for chart Aus 780

© Commonwealth of Australia 2021

(138.2 x 88.4mm)

To accompany Australian Notice to Mariners 48/2021

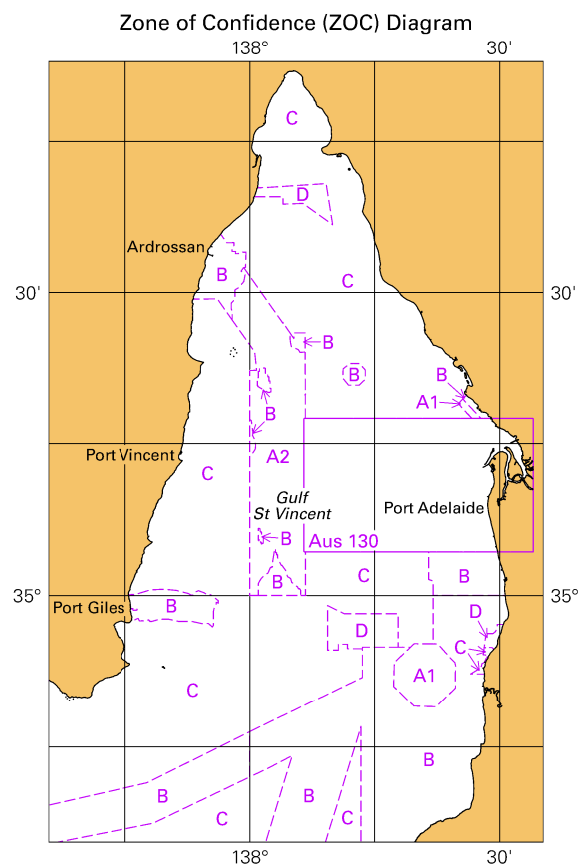


Block B for chart Aus 780

© Commonwealth of Australia 2021

(200.9 x 154.7mm)

To accompany Australian Notice to Mariners 50/2021



© Commonwealth of Australia 2021

Block for chart Aus 781

(65.4 x 103.2mm)

(80.9 x 76.3mm)

ENC
(see Note)