



12 November 2021

Edition 23

AUSTRALIAN NOTICES TO MARINERS

Notices 965 - 1008

Published fortnightly by the Australian Hydrographic Office



Australian Notices to Mariners are the authority for correcting charts and publications published by the Australian Hydrographic Office covering Australia, Papua New Guinea, Solomon Islands, Australian Antarctic Territory and Timor-Leste.

Commodore S.T. DUNNE RAN
Hydrographer of Australia

SECTIONS.

- I. **Australian Notices to Mariners, including blocks and notes.**
- II. **Hydrographic Reports.**

SUPPLEMENTS.

- I. **Tracings**
- II. **Cumulative List of Australian Notices to Mariners.**
- III. **Cumulative List of Temporary and Preliminary Australian Notices to Mariners.**
- IV. **Temporary and Preliminary Notices in force.**

© Commonwealth of Australia 2021

This work is copyright. Apart from any use permitted under the Copyright Act 1968, no part may be reproduced by any process, adapted, communicated or commercially exploited without prior written permission from The Commonwealth represented by the Australian Hydrographic Office.

IMPORTANT NOTICE

This edition of Notices to Mariners includes all significant information affecting AHO products which the AHO has become aware of since the last edition. All reasonable efforts have been made to ensure the accuracy and completeness of the information, including third party information, on which these updates are based. The AHO regards third parties from which it receives information as reliable, however the AHO cannot verify all such information and errors may therefore exist. The AHO does not accept liability for errors in third party information.

GENERAL INSTRUCTIONS

The substance of these notices should be inserted on the charts affected.

Bearings are referred to the true compass and are reckoned clockwise from North; those relating to lights are given as seen by an observer from seaward.

Positions quoted in notices relate to WGS84 which is the horizontal datum for all charts produced by the Australian Hydrographic Office.

The range quoted for a light is its nominal range.

Depths are with reference to the chart datum of each chart. Heights are above mean high water springs or mean higher high water, as appropriate.

The capital letter (P) or (T) after the number of any notice denotes a preliminary or temporary notice respectively, which are contained separately at the end of the permanent notices.

REPORTING OF DANGERS

Mariners are particularly requested to notify the AUSTRALIAN HYDROGRAPHIC OFFICE, Locked Bag 8801 Wollongong, NSW 2500 (Fax 02-4223 6599, e-mail datacentre@hydro.gov.au or, alternatively by filling in and submitting the [Hydrographic Notes](#) forms located on the web site – www.hydro.gov.au), immediately on the discovery of new dangers or suspected dangers to navigation. For changes or defects in aids to navigation notify AusSAR (Fax 02-6230 6868 or email rccaus@amsa.gov.au).

AUTHORISED USE

Copies of Australian notices are available free of charge from the Australian Hydrographic Office (AHO) website (www.hydro.gov.au) and through the eNotices (email) service (www.hydro.gov.au/enotices/enotices.htm).

Individual Notices may be copied for the purpose of inserting Notice substance on official charts and publications. Paper copies may be printed by chart agents and distributed to customers on a cost recovery basis. Participating chart agents are listed on the AHO website as providing a 'Paper Notices to Mariners' service (www.hydro.gov.au/webapps/jsp/agents/agents-list.jsp). Copies of the notices may not be sold for profit without prior written agreement.

NUMERICAL INDEX OF NOTICES TO MARINERS

Edition No 23

Notices	Aus Chart, INT Chart, ENC Cell, AHP, BA Pubs
965	Aus 809
966	Aus 195
967	Aus 489, 810
968	Aus 237
969	Aus 817, 818
970	Aus 235
971	Aus 840, 841
972	Aus 320, 730
973	Aus 143, 157
974	Aus 143
975	Aus 157
976	Aus 151
977	Aus 349, 487, 789
978	Aus 487, 4644, INT 644
979(T)	Aus 237, 238
980(T)	Aus 819
981(T)	Aus 249, 250, 823
982(T)	Aus 236
983(T)	Aus 260, 367, 490, 820, 822
984(T)	Aus 840, 841
985(T)	Aus 840, 841
986(T)	Aus 328
987(P)	Aus 37, 320, 729, 730
988(T)	Aus 116, 335, 336, 4070, 4708, 4709, 4710, 4725, 4726, INT 70, 708, 709, 710, 725, 726
989(T)	Aus 320, 323, 730, 732
990(T)	Aus 328, 742
991(T)	Aus 53, 326
992(T)	Aus 327
993(T)	Aus 327
994(T)	Aus 754, 4725, 4726, INT 725, 726
995(P)	Aus 181
996(T)	Aus 349, 787, 4728, INT 728
997(T)	Aus 157
998(T)	Aus 143, 157
999(T)	Aus 157
1000(T)	Aus 144
1001(T)	Aus 143, 157
1002(T)	Aus 143
1003(T)	Aus 143
1004(T)	Aus 155
1005(T)	Aus 181, 357, 802
1006(T)	Aus 349, 487, 787, 789
1007(P)	Aus 349, 487, 789
1008(T)	Aus 487, 790

NUMERICAL INDEX OF CHARTS AFFECTED

Edition No 23

Aus Chart	Notices
Aus 37	987(P)
Aus 53	991(T)
Aus 116	988(T)
Aus 143	973, 974, 998(T), 1001(T), 1002(T), 1003(T)
Aus 144	1000(T)
Aus 151	976
Aus 155	1004(T)
Aus 157	973, 975, 997(T), 998(T), 999(T), 1001(T)
Aus 181	995(P), 1005(T)
Aus 195	966
Aus 235	970
Aus 236	982(T)
Aus 237	968, 979(T)
Aus 238	979(T)
Aus 249	981(T)
Aus 250	981(T)
Aus 260	983(T)
Aus 320	972, 987(P), 989(T)
Aus 323	989(T)
Aus 326	991(T)
Aus 327	992(T), 993(T)
Aus 328	986(T), 990(T)
Aus 335	988(T)
Aus 336	988(T)
Aus 349	977, 996(T), 1006(T), 1007(P)
Aus 357	1005(T)
Aus 367	983(T)
Aus 487	977, 978, 1006(T), 1007(P), 1008(T)
Aus 489	967
Aus 490	983(T)
Aus 729	987(P)
Aus 730	972, 987(P), 989(T)
Aus 732	989(T)
Aus 742	990(T)
Aus 754	994(T)
Aus 787	996(T), 1006(T)
Aus 789	977, 1006(T), 1007(P)
Aus 790	1008(T)
Aus 802	1005(T)
Aus 809	965
Aus 810	967
Aus 817	969
Aus 818	969
Aus 819	980(T)
Aus 820	983(T)
Aus 822	983(T)
Aus 823	981(T)
Aus 840	971, 984(T), 985(T)
Aus 841	971, 984(T), 985(T)
Aus 4070	988(T)
Aus 4644	978
Aus 4708	988(T)
Aus 4709	988(T)
Aus 4710	988(T)

Aus Chart	Notices
Aus 4725	988(T), 994(T)
Aus 4726	988(T), 994(T)
Aus 4728	996(T)

INT Chart	Notices
INT 70	988(T)
INT 644	978
INT 708	988(T)
INT 709	988(T)
INT 710	988(T)
INT 725	988(T), 994(T)
INT 726	988(T), 994(T)
INT 728	996(T)

965 AUSTRALIA - Products - New Charts, New Editions, Withdrawn Charts

Australian Hydrographic Office

New Charts

<i>Chart</i>	<i>Title and Geographical limits</i>	<i>Scale</i>	<i>Publication Date</i>	<i>Remarks</i>
NIL				

New Electronic Navigation Chart (Aus ENC)

<i>Cell Name</i>	<i>Title</i>	<i>Publication Date</i>	<i>Remarks</i>
PG303152	Papua New Guinea - New Ireland - Mashet Island to Tabar Islands	11 November 2021	AU303152 has been withdrawn.
PG407150	Papua New Guinea - New Britain - Kablumgu Cape to Montagu Harbour	11 November 2021	AU407150 has been withdrawn.
PG411148	Papua New Guinea - South Coast - Aroma Passage to Table Bay	11 November 2021	AU411148 has been withdrawn.
PG310145	Papua New Guinea - Coral Sea - Cell 02	11 November 2021	AU310145 has been withdrawn.
PG411147	Papua New Guinea - South Coast - Beagle Entrance to Aroma Passage	11 November 2021	AU411147 has been withdrawn.

New Editions and Withdrawn Charts

<i>Chart</i>	<i>Title</i>	<i>Scale</i>	<i>Publication Date</i>	<i>Remarks</i>
Aus 809 (Edition 3)	Australia - East Coast - New South Wales - Port Jackson to Port Stephens	1:150 000	12 November 2021	New edition with general updating throughout; including latest bathymetric data. Chart Aus 809 Edition 2 dated 10 November 2000 is now superseded and must be withdrawn from use.

Australian National Tide Tables 2022

<i>AHP No</i>	<i>Title</i>	<i>Recommended retail price (incl GST)</i>	<i>Remarks</i>
AHP11	Australian National Tides Tables 2022	\$55.00	Paper Australian National Tides Tables 2022 for Australia, Antarctica, Papua New Guinea, Solomon Islands and Timor-Leste. Provides tidal information for 2022. Available from accredited chart distribution agents.

Chart permanently withdrawn

Charts listed above as withdrawn no longer meet chart carriage requirements and should be marked as "superseded" and replaced with the new chart/ new edition listed prior to passage through the area covered by the new chart.

When placing orders with a chart agent between notice of forthcoming edition and its publication, mariners should advise whether their order pertains to the current edition or the new edition.

For further details refer to the AHO website at www.hydro.gov.au for new edition and new chart stock arrival information.

966 AUSTRALIA - Products - New Charts and New Editions to be published shortly

Australian Hydrographic Office

New Charts to be published shortly

Chart	Title	Scale	Remarks
NIL			

New Editions to be published shortly

Chart	Title	Scale	Remarks
Aus 195	Australia - East Coast - New South Wales - Approaches to Port Kembla	1:25 000	New edition with general updating throughout; including latest bathymetric data.

967 AUSTRALIA - NEW SOUTH WALES - Stockton Bight - Depths

Australian Hydrographic Office

Aus 489 [225/2020]

Insert	accompanying block	32° 53'.0 S	151° 50'.0 E
--------	--------------------	-------------	--------------

Aus 810 [925/2021]

Insert	accompanying ZOC diagram	32° 12'.0 S	152° 12'.5 E
	accompanying block	32° 53'.0 S	152° 08'.2 E

968 AUSTRALIA - QUEENSLAND - Brisbane River - Fisherman Islands - Grain and Woodchip Wharf - Maintained depth

Maritime Safety Queensland Notice 395/2021

Aus 237 [359/2021]

Amend	legend to 14.0m	27° 22'.92 S	153° 09'.75 E
-------	-----------------	--------------	---------------

969 AUSTRALIA - QUEENSLAND - Bundaberg - Burnett Heads - Fish aggregating device

Department of Agriculture and Fisheries

Aus 817 [NE 20/8/2021]

Insert	special conical light buoy, Fl. Y. 3s FAD, without topmark	24° 39'.27 S	152° 33'.01 E
--------	--	--------------	---------------

Aus 818 [927/2021]

Insert	special conical light buoy, Fl. Y. 3s FAD, without topmark	24° 39'.27 S	152° 33'.01 E
--------	--	--------------	---------------

970 AUSTRALIA - QUEENSLAND - Moreton Bay - North West Channel - Light beacon

Maritime Safety Queensland Notice 397/2021

Aus 235 [732/2021]

Amend	light beacon to Q.Bu & Q.G (F Day) NW1	26° 51'.3 S	153° 09'.0 E
-------	--	-------------	--------------

971 PAPUA NEW GUINEA - Saibai Island - Rock

FPV Wauri

Aus 840 [933/2021]

Insert	dangerous rock enclosed by danger circle, centred on	9° 19'.77 S	142° 50'.27 E
--------	--	-------------	---------------

Aus 841 [935/2021]

Insert	dangerous rock enclosed by danger circle, centred on	9° 19'.77 S	142° 50'.27 E
--------	--	-------------	---------------

972 AUSTRALIA - WESTERN AUSTRALIA - Degerando Island - Depths

MMA Offshore

Aus 320 [937/2021]

Insert	depth, 4 ₇ m, and extend contour S to enclose	15° 21'.79 S	124° 11'.16 E
--------	--	--------------	---------------

Delete	depth, 6 ₈ m	15° 21'.6 S	124° 11'.1 E
--------	-------------------------	-------------	--------------

Aus 730 [937/2021]

Insert	depth, 4 ₇ m, and extend contour S to enclose	15° 21'.79 S	124° 11'.16 E
--------	--	--------------	---------------

Delete	depth, 6 ₈ m	15° 21'.6 S	124° 11'.1 E
--------	-------------------------	-------------	--------------

973 AUSTRALIA - VICTORIA - Port Phillip - Geelong - Infrastructure; light buoy; obstruction

AW Maritime

Aus 143 [838/2021]

Insert	continuous line, between	38° 08'.65 S	144° 21'.87 E
		38° 08'.51 S	144° 21'.97 E
		38° 08'.56 S	144° 22'.07 E

Aus 157 [632/2021]

Insert	accompanying block	38° 08'.3 S	144° 21'.8 E
--------	--------------------	-------------	--------------

974 AUSTRALIA - VICTORIA - Port Phillip - Light buoys

Ports Victoria Notice 330(T)/2021

Aus 143 [973/2021]

Insert	special conical light buoy, Fl. Y. 2·5s, without topmark	38° 03'.51 S	144° 52'.22 E
--------	--	--------------	---------------

Delete	light buoy	38° 03'.5 S	144° 58'.0 E
--------	------------	-------------	--------------

975 AUSTRALIA - VICTORIA - Port Phillip - West Channel - Chart withdrawn

Australian Hydrographic Office

Aus 157 [973/2021]

Delete	magenta legend, Adjoining Chart Aus158, in S border	38° 12'.3 S	144° 45'.5 E
--------	---	-------------	--------------

976 AUSTRALIA - VICTORIA - Western Port - Somers - Jetty

G Hall , Parks Victoria

Aus 151 [635/2021]

Delete	dashed line and legend, Jetty (Ru), between	38° 23'.54 S	145° 08'.57 E
		38° 23'.65 S	145° 08'.58 E

977 AUSTRALIA - BASS STRAIT - King Island - Sea Elephant Reef - WrecksHMAS *Leeuwin***Aus 349 [277/2021]**

Delete	wreck and legend, PA	39° 46'.9 S	144° 10'.1 E
--------	----------------------	-------------	--------------

Aus 487 [837/2021]

Delete	wreck and legend, PA	39° 46'.9 S	144° 10'.1 E
--------	----------------------	-------------	--------------

Aus 789 [268/2019]

Insert	depth, 12 ₈ m, enclosed by danger circle with legend, Wk	39° 48'.36 S	144° 10'.04 E
--------	---	--------------	---------------

Delete	wreck and legend, PA	39° 46'.9 S	144° 10'.1 E
--------	----------------------	-------------	--------------

978 AUSTRALIA - BASS STRAIT - Wreck

Geoscience Australia

Aus 487 [977/2021]Insert depth, 73m, enclosed by danger circle with legend, *Wk*

39° 55'.81 S 146° 14'.12 E

Aus 4644 (INT 644) [484/2020]Insert depth, 73m, enclosed by danger circle with legend, *Wk*

39° 55'.8 S 146° 14'.1 E

979(T)/2021 AUSTRALIA - QUEENSLAND - Brisbane River - Lytton Rocks Reach - Scientific instrument recovered*Former Notice* - 891(T)/2019 is cancelled

Maritime Safety Queensland Notice 415/2021

Cancel this notice on receipt.

Chart formerly affected - Aus 237 - Aus 238**980(T)/2021 AUSTRALIA - QUEENSLAND - Fitzroy River - South Channel - Scientific instrument***Former Notice* - 661(T)/2016 is cancelled

Maritime Safety Queensland Notice 400(T)/2021

A special light buoy, *Fl.Y.4s*, exists in position 23° 30'.23 S 150° 45'.83 E.**Chart temporarily affected - Aus 819****981(T)/2021 AUSTRALIA - QUEENSLAND - Hay Point - Exclusion zone**

Maritime Safety Queensland Notice 398(T)/2021

An exclusion zone exists in an area bounded by the coast and the following positions:

21° 16'.40 S 149° 17'.85 E

21° 15'.96 S 149° 18'.67 E

21° 16'.25 S 149° 18'.86 E

21° 16'.16 S 149° 19'.02 E

21° 15'.91 S 149° 18'.86 E

21° 15'.69 S 149° 18'.83 E

21° 15'.34 S 149° 18'.61 E

21° 15'.59 S 149° 18'.14 E

21° 15'.83 S 149° 18'.29 E

21° 16'.25 S 149° 17'.51 E.

Only authorised vessels are permitted to enter.

Mariners are advised to navigate with caution in the area.

Chart temporarily affected - Aus 249 - Aus 250 - Aus 823**982(T)/2021 AUSTRALIA - QUEENSLAND - Moreton Bay - Green Island - Light beacon restored***Former Notice* - 949(T)/2021 is cancelled

Maritime Safety Queensland Notice 396(T)/2021

Cancel this notice on receipt.

Chart formerly affected - Aus 236

983(T)/2021 AUSTRALIA - QUEENSLAND - Shoalwater Bay - Live firing

Maritime Safety Queensland Notice 386(T)/2021

Live firing will be conducted in the marine component of the Shoalwater Bay training area during the period 30 November to 2 December 2021.

A marine danger area extends to all internal waters bounded by the following positions:

22° 10'.02 S 150° 30'.06 E
 22° 14'.76 S 150° 20'.31 E
 22° 24'.33 S 150° 26'.87 E
 22° 24'.20 S 150° 39'.11 E
 22° 16'.19 S 150° 39'.47 E.

All waters, creeks, beaches and other areas within the declared marine danger area are not available for access.

There will be a safe anchorage available at Freshwater, Port Clinton, West Water Port Clinton, South Arm Port Clinton and Pearl Bay.

Mariners are advised to keep clear of this area throughout the above times.

Chart temporarily affected - Aus 260 - Aus 367 - Aus 490 - Aus 820 - Aus 822

984(T)/2021 PAPUA NEW GUINEA - Saibai Island - Wreck salvaged

Former Notice - 952(T)/2021 is cancelled

Australian Maritime Safety Authority

Cancel this notice on receipt.

Chart formerly affected - Aus 840 - Aus 841

985(T)/2021 PAPUA NEW GUINEA - Saibai Island - Shoaling

Former Notice - 201(T)/2021 is cancelled

HMAS *Paluma*, HMAS *Mermaid*

Latest survey indicates shoaler depths than those charted exist in an area bounded by the following positions:

9° 20'.66 S 142° 36'.94 E
 9° 20'.15 S 142° 39'.81 E
 9° 17'.86 S 142° 48'.32 E
 9° 21'.86 S 142° 47'.07 E
 9° 21'.01 S 142° 40'.60 E
 9° 21'.80 S 142° 37'.67 E
 9° 22'.75 S 142° 37'.04 E
 9° 22'.72 S 142° 35'.37 E
 9° 22'.46 S 142° 34'.10 E
 9° 21'.74 S 142° 34'.60 E.

Mariners are advised to navigate with caution in the area.

Charts will be updated in due course.

Chart temporarily affected - Aus 840 - Aus 841

986(T)/2021 AUSTRALIA - WESTERN AUSTRALIA - Barrow Island - Scientific instruments northwestwards

Former Notice - 901(T)/2021 is cancelled

Technip FMC

Special light buoys, *Fl(5)Y.20s*, exist in positions 19° 54'.20 S 114° 27'.48 E and 20° 30'.04 S 114° 48'.60 E.

Chart temporarily affected - Aus 328

987(P)/2021 AUSTRALIA - WESTERN AUSTRALIA - Bonaparte Archipelago - D'Arcole Islands to Augereau Island - Shoaling

European Space Agency

In and around the D'Arcole Islands (14° 54'.97 S 124° 44'.43 E) and Augereau Island (14° 45'.33 S 125° 07'.78 E) latest survey shows the existence of numerous shoaler depths than those charted.

The most significant shoals are as follows:

<i>Position</i>	<i>Depth</i>
14° 43'.71 S 125° 04'.91 E	6.7m
14° 44'.82 S 125° 05'.02 E	9.7m
14° 45'.05 S 125° 05'.55 E	8.9m
14° 49'.37 S 125° 07'.51 E	7.4m
14° 52'.96 S 124° 43'.51 E	1.0m
14° 54'.01 S 124° 44'.13 E	3.3m
14° 55'.03 S 124° 39'.57 E	1.8m
14° 56'.09 S 124° 43'.45 E	3.6m
14° 57'.10 S 124° 39'.44 E	1.2m
14° 57'.22 S 124° 46'.19 E	1.8m
14° 57'.83 S 124° 39'.85 E	0.9m
15° 00'.80 S 124° 37'.79 E	3.7m.

Mariners are advised to navigate with caution in the area.

Charts will be updated in due course.

Chart which will be affected - Aus 37 - Aus 320 - Aus 729 - Aus 730

988(T)/2021 AUSTRALIA - WESTERN AUSTRALIA - Cape Leeuwin - Light altered

Australian Maritime Safety Authority Auscoast Warning 232/2021

The light, *Fl. 7-5s 56m 25M* (34° 22'.49 S 115° 08'.18 E), has been temporarily altered to *Fl. 7-5s 56m 20M*.

Chart temporarily affected - Aus 116 - Aus 335 - Aus 336 - Aus 4070 (INT 70) - Aus 4708 (INT 708) - Aus 4709 (INT 709) - Aus 4710 (INT 710) - Aus 4725 (INT 725) - Aus 4726 (INT 726)

989(T)/2021 AUSTRALIA - WESTERN AUSTRALIA - Champagne Islands - Survey operations

Former Notice - 954(T)/2021 is cancelled

MMA Offshore

MV *Ocean Dynasty* and MV *Empress* are conducting survey operations in an area bounded by the following positions:

15° 21'.96 S 123° 54'.46 E
 15° 00'.88 S 124° 10'.33 E
 15° 07'.90 S 124° 25'.81 E
 15° 22'.60 S 124° 15'.01 E
 15° 27'.51 S 124° 21'.40 E
 15° 31'.81 S 124° 09'.25 E.

Special buoys exist in the following positions:

15° 04'.80 S 124° 20'.20 E
 15° 09'.90 S 124° 25'.80 E
 15° 15'.20 S 124° 20'.80 E
 15° 17'.90 S 124° 11'.30 E
 15° 21'.50 S 124° 16'.50 E
 15° 26'.20 S 124° 22'.40 E
 15° 31'.70 S 124° 23'.80 E
 15° 32'.50 S 124° 11'.00 E
 15° 28'.76 S 124° 03'.04 E
 15° 22'.20 S 124° 52'.50 E
 15° 10'.30 S 124° 01'.80 E
 15° 00'.60 S 124° 10'.70 E.

Special light buoys, Q. Y, will be deployed at various locations in the vicinity of the survey area.

Mariners are advised to navigate with caution in the area. 2M clearance requested.

Chart temporarily affected - Aus 320 - Aus 323 - Aus 730 - Aus 732

990(T)/2021 AUSTRALIA - WESTERN AUSTRALIA - Montebello Islands - Subsea operations northwestwards completed

Former Notice - 910(T)/2021 is cancelled
Australian Maritime Safety Authority

Cancel this notice on receipt.

Chart formerly affected - Aus 328 - Aus 742

991(T)/2021 AUSTRALIA - WESTERN AUSTRALIA - Port Hedland - Obstruction

Pilbara Ports Authority

An obstruction, with least depth 6.5m, exists in position 20° 14'.72 S 118° 37'.41 E.

Mariners are advised to navigate with caution in the area.

Chart temporarily affected - Aus 53 - Aus 326

992(T)/2021 AUSTRALIA - WESTERN AUSTRALIA - Rankin Bank - Drill rig eastwards

Diamond Offshore

Drill rig *Ocean Apex* is conducting drilling operations in position 19° 26'.12 S 116° 28'.85 E.

Chart temporarily affected - Aus 327

993(T)/2021 AUSTRALIA - WESTERN AUSTRALIA - Rankin Bank - Drill rig eastwards

Former Notice - 912(T)/2021 is cancelled
Diamond Offshore

Cancel this notice on receipt.

Chart formerly affected - Aus 327

994(T)/2021 AUSTRALIA - WESTERN AUSTRALIA - Rottnest Island - Military exercise completed

Former Notice - 961(T)/2021 is cancelled
Australian Maritime Safety Authority

Cancel this notice on receipt.

Chart formerly affected - Aus 754 - Aus 4725 (INT 725) - Aus 4726 (INT 726)

995(P)/2021 AUSTRALIA - VICTORIA - Port Albert - Nav aids to be withdrawn

Gippsland Ports Notice 9(P)/2021

Nav aids in the channel between positions 38° 41'.04 S 146° 38'.02 E and 38° 39'.43 S 146° 39'.52 E will be withdrawn.

Eight new buoys will be established between positions 38° 41'.04 S 146° 38'.02 E and 38° 40'.17 S 146° 38'.70 E.

Chart which will be affected - Aus 181

996(T)/2021 AUSTRALIA - VICTORIA - Port Campbell - Drill rig southwards

Former Notice - 298(T)/2021 is cancelled
MODU *Ocean Onyx*

Drill rig *Ocean Onyx* is conducting drilling operations in position 39° 12'.51 S 142° 52'.50 E.

Chart temporarily affected - Aus 349 - Aus 787 - Aus 4728 (INT 728)

997(T)/2021 AUSTRALIA - VICTORIA - Port Phillip - Geelong - Harbour works completed*Former Notice - 411(T)/2021 is cancelled*

AW Maritime

Cancel this notice on receipt.

Chart formerly affected - Aus 157**998(T)/2021 AUSTRALIA - VICTORIA - Port Phillip - Point Wilson - Exclusion zone**

Victorian Regional Channels Authority Notice 239/2020, Parks Victoria Notice 314(T)/2021

A 300m exclusion zone exists outwards from the centreline of Point Wilson Pier (34° 28'.26 S 150° 54'.67 E). It is marked by special light buoys, /so.2s, in the following positions:

38° 05'.51 S 144° 30'.73 E

38° 05'.68 S 144° 31'.32 E

38° 05'.84 S 144° 31'.86 E

38° 05'.88 S 144° 32'.45 E

38° 05'.55 S 144° 32'.04 E.

Only vessels involved in the remediation works are permitted to enter the area.

Mariners are advised to navigate with caution in the area.

Chart temporarily affected - Aus 143 - Aus 157**999(T)/2021 AUSTRALIA - VICTORIA - Port Phillip - Wedge Point - Light buoy off station southwards**

Parks Victoria Notice 315(T)/2021

The special light buoy, *Fl(4)Y.10s* (38° 03'.00 S 144° 38'.65 E), is off station.**Chart temporarily affected - Aus 157****1000(T)/2021 AUSTRALIA - VICTORIA - Port Phillip - Ticonderoga Bay - Buoy off station**

Parks Victoria Notice 311(T)/2021

The special buoy in position (38° 18'.43 S 144° 41'.38 E) is off station.

Chart temporarily affected - Aus 144**1001(T)/2021 AUSTRALIA - VICTORIA - Port Phillip - Point Wilson - Exclusion zone***Former Notice - 728(T)/2020 is cancelled*

Victorian Regional Channels Authority Notice 239/2020, Parks Victoria Notice 314(T)/2021

Cancel this notice on receipt.

Chart formerly affected - Aus 143 - Aus 157**1002(T)/2021 AUSTRALIA - VICTORIA - Port Phillip - Mornington - Light beacon destroyed**

Parks Victoria Notice 320(T)/2021

The west cardinal light beacon, *VQ(9)10s* (38° 13'.42 S 145° 01'.59 E), has been destroyed.**Chart temporarily affected - Aus 143****1003(T)/2021 AUSTRALIA - VICTORIA - Port Phillip - Mount Martha - Beacon destroyed**

Parks Victoria Notice 321(T)/2021

The special beacon (38° 16'.00 S 145° 00'.53 E) has been destroyed.

Chart temporarily affected - Aus 143

1004(T)/2021 AUSTRALIA - VICTORIA - Port Phillip - Brighton - Light buoy unlit
Parks Victoria Notice 324(T)/2021

The special light buoy, *Fl(3)Y.10s R2* (37° 54'.55 S 144° 56'.33 E), is unlit.

Chart temporarily affected - Aus 155

1005(T)/2021 AUSTRALIA - VICTORIA - Seal Islands - Scientific instruments eastwards

Former Notice - 917(T)/2021 is cancelled
Star of the South Wind Farm

Scientific instruments exist as follows:

<i>Position</i>	<i>Depth below surface</i>
38° 42'.15 S 147° 06'.10 E	12m
38° 50'.09 S 146° 46'.02 E	12m
38° 50'.20 S 146° 45'.98 E	12m
38° 50'.83 S 146° 55'.99 E	12m
38° 51'.11 S 146° 53'.94 E	12m
38° 51'.43 S 146° 55'.07 E	12m
38° 52'.35 S 146° 55'.28 E	12m
38° 58'.73 S 147° 03'.30 E	32m
39° 04'.37 S 147° 14'.28 E	32m.

Chart temporarily affected - Aus 181 - Aus 357 - Aus 802

1006(T)/2021 AUSTRALIA - TASMANIA - King Island - Survey operations completed

Former Notice - 774(T)/2021 is cancelled
Australian Maritime Safety Authority

Cancel this notice on receipt.

Chart formerly affected - Aus 349 - Aus 487 - Aus 787 - Aus 789

1007(P)/2021 AUSTRALIA - TASMANIA - King Island - Shoaling

HMAS *Leeuwin*

In the vicinity of King Island (39° 52'.0 S 144° 00'.00 E) latest survey shows the existence of numerous shoaler depths than those charted.

The most significant shoals are as follows:

<i>Position</i>	<i>Depth</i>
39° 32'.77 S 143° 50'.99 E	18.3m
39° 33'.13 S 143° 53'.21 E	13.7m
39° 33'.37 S 143° 50'.88 E	11.8m
39° 33'.43 S 143° 52'.92 E	13.7m
39° 34'.89 S 143° 53'.51 E	15.0m
39° 39'.85 S 144° 07'.14 E	16.4m
39° 45'.98 S 144° 12'.15 E	19.0m.

Mariners are advised to navigate with caution in the area.

Charts will be updated in due course.

Chart which will be affected - Aus 349 - Aus 487 - Aus 789

1008(T)/2021 AUSTRALIA - TASMANIA - Three Hummock Island - Survey operations northeastwards
Shearwater

MV *Geo Coral* is conducting seismic survey operations in an area bounded by the following positions:

40° 06'.27 S 144° 59'.30 E

40° 14'.84 S 145° 17'.73 E

39° 41'.93 S 145° 43'.39 E

39° 33'.44 S 145° 25'.05 E.

Mariners are advised to navigate with caution in the area. 6M clearance requested.

Chart temporarily affected - Aus 487 - Aus 790

HYDROGRAPHIC REPORTS

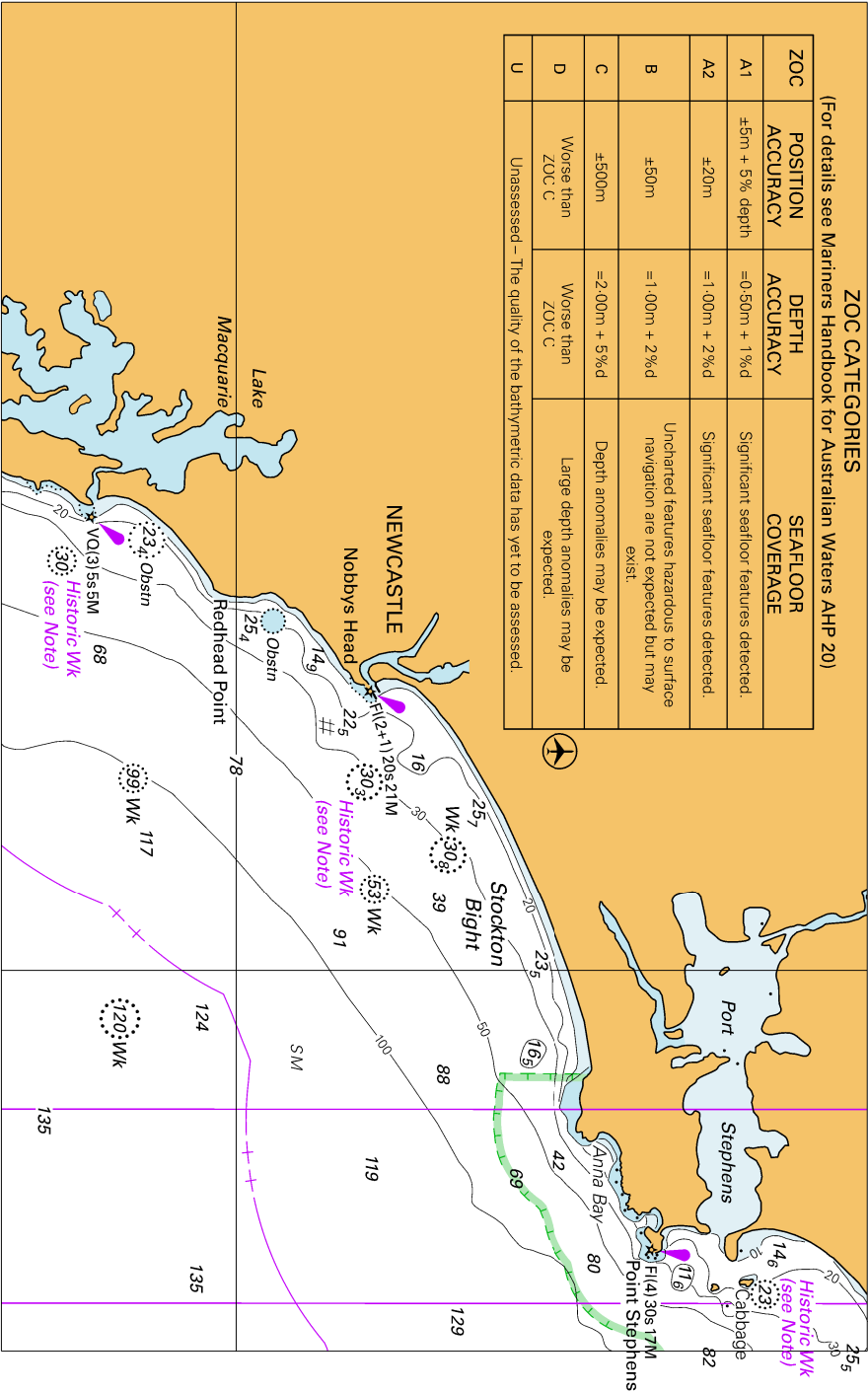
<i>Locality</i>	<i>Report</i>	<i>Ship/Authority</i>	<i>Observer</i>
VIC- Western Port	Jetty		G Hall

To accompany Australian Notice to Mariners 967/2021

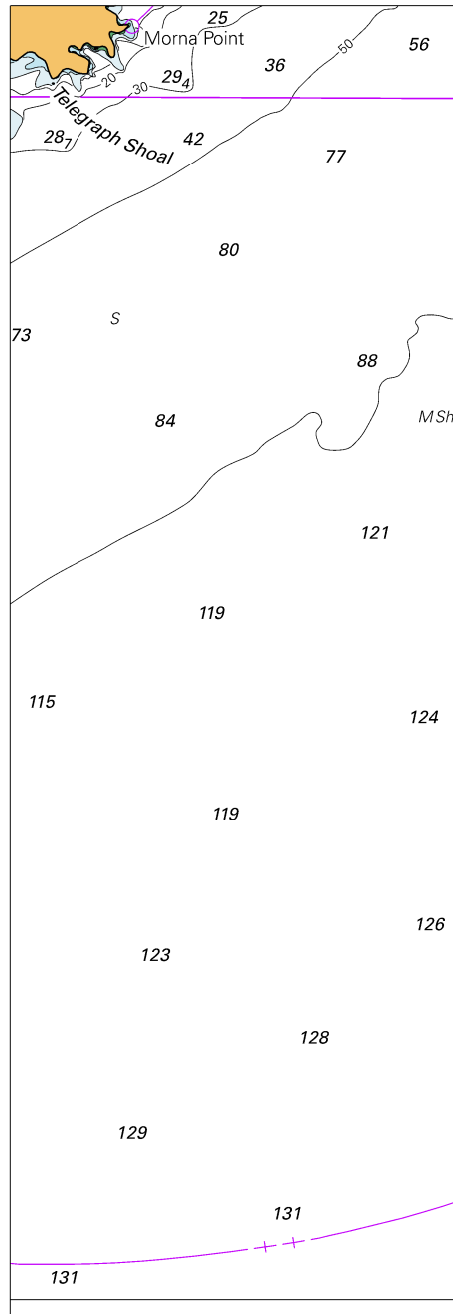
ZOC CATEGORIES

(For details see Mariners Handbook for Australian Waters AHP 20)

ZOC	POSITION ACCURACY	DEPTH ACCURACY	SEAFLOOR COVERAGE
A1	±5m + 5% depth	±0.50m + 1% d	Significant seafloor features detected.
A2	±20m	±1.00m + 2% d	Significant seafloor features detected.
B	±50m	±1.00m + 2% d	Uncharted features hazardous to surface navigation are not expected but may exist.
C	±500m	±2.00m + 5% d	Depth anomalies may be expected.
D	Worse than ZOC C	Worse than ZOC C	Large depth anomalies may be expected.
U	Unassessed – The quality of the bathymetric data has yet to be assessed.		



To accompany Australian Notice to Mariners 967/2021



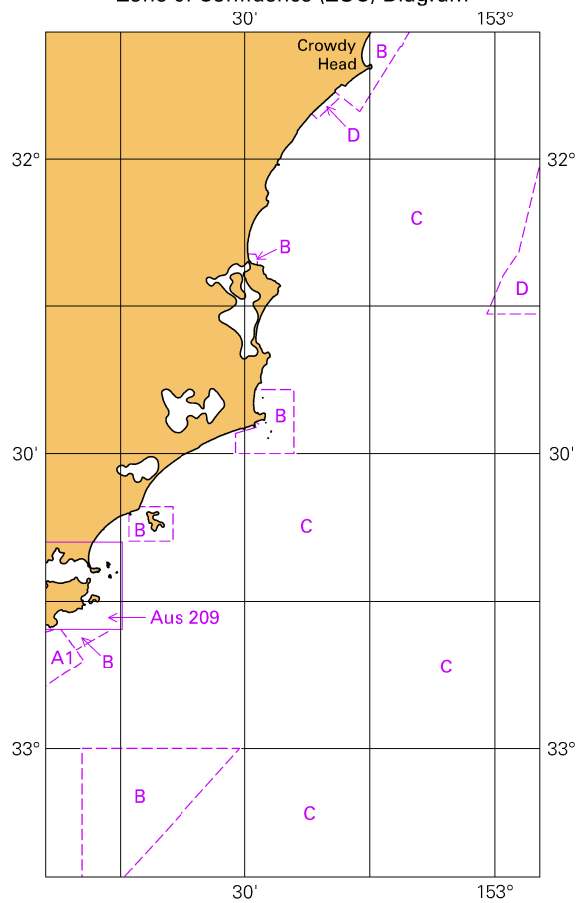
Block for chart Aus 810

(58.9 x 173.9mm)

© Commonwealth of Australia 2021

To accompany Australian Notice to Mariners 967/2021

Zone of Confidence (ZOC) Diagram

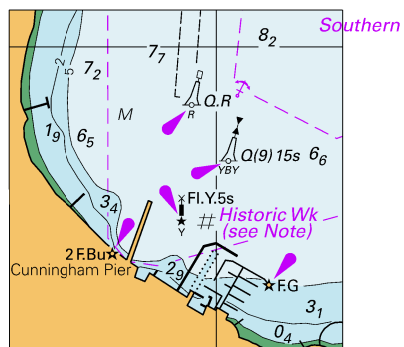


© Commonwealth of Australia 2021

Block for chart Aus 810

(65.4 x 111.7mm)

To accompany Australian Notice to Mariners 973/2021



© Commonwealth of Australia 2021

Block for chart Aus 157

(43.9 x 44.8mm)