



29 October 2021

Edition 22

# AUSTRALIAN NOTICES TO MARINERS

**Notices 923 - 964**

Published fortnightly by the Australian Hydrographic Office



Australian Notices to Mariners are the authority for correcting charts and publications published by the Australian Hydrographic Office covering Australia, Papua New Guinea, Solomon Islands, Australian Antarctic Territory and Timor-Leste.

Commodore S.T. DUNNE RAN  
*Hydrographer of Australia*

---

## SECTIONS.

- I. **Australian Notices to Mariners, including blocks and notes.**
- II. **Hydrographic Reports.**

## SUPPLEMENTS.

- I. **Tracings**
- II. **Cumulative List of Australian Notices to Mariners.**
- III. **Cumulative List of Temporary and Preliminary Australian Notices to Mariners.**
- IV. **Temporary and Preliminary Notices in force.**

---

© Commonwealth of Australia 2021

This work is copyright. Apart from any use permitted under the Copyright Act 1968, no part may be reproduced by any process, adapted, communicated or commercially exploited without prior written permission from The Commonwealth represented by the Australian Hydrographic Office.

## IMPORTANT NOTICE

This edition of Notices to Mariners includes all significant information affecting AHO products which the AHO has become aware of since the last edition. All reasonable efforts have been made to ensure the accuracy and completeness of the information, including third party information, on which these updates are based. The AHO regards third parties from which it receives information as reliable, however the AHO cannot verify all such information and errors may therefore exist. The AHO does not accept liability for errors in third party information.

---

## GENERAL INSTRUCTIONS

The substance of these notices should be inserted on the charts affected.

Bearings are referred to the true compass and are reckoned clockwise from North; those relating to lights are given as seen by an observer from seaward.

Positions quoted in notices relate to WGS84 which is the horizontal datum for all charts produced by the Australian Hydrographic Office.

The range quoted for a light is its nominal range.

Depths are with reference to the chart datum of each chart. Heights are above mean high water springs or mean higher high water, as appropriate.

The capital letter (P) or (T) after the number of any notice denotes a preliminary or temporary notice respectively, which are contained separately at the end of the permanent notices.

---

## REPORTING OF DANGERS

Mariners are particularly requested to notify the AUSTRALIAN HYDROGRAPHIC OFFICE, Locked Bag 8801 Wollongong, NSW 2500 (Fax 02-4223 6599, e-mail [datacentre@hydro.gov.au](mailto:datacentre@hydro.gov.au) or, alternatively by filling in and submitting the [Hydrographic Notes](#) forms located on the web site – [www.hydro.gov.au](http://www.hydro.gov.au)), immediately on the discovery of new dangers or suspected dangers to navigation. For changes or defects in aids to navigation notify AusSAR (Fax 02-6230 6868 or email [rccaus@amsa.gov.au](mailto:rccaus@amsa.gov.au)).

---

## AUTHORISED USE

Copies of Australian notices are available free of charge from the Australian Hydrographic Office (AHO) website ([www.hydro.gov.au](http://www.hydro.gov.au)) and through the eNotices (email) service ([www.hydro.gov.au/enotices/enotices.htm](http://www.hydro.gov.au/enotices/enotices.htm)).

Individual Notices may be copied for the purpose of inserting Notice substance on official charts and publications. Paper copies may be printed by chart agents and distributed to customers on a cost recovery basis. Participating chart agents are listed on the AHO website as providing a 'Paper Notices to Mariners' service ([www.hydro.gov.au/webapps/jsp/agents/agents-list.jsp](http://www.hydro.gov.au/webapps/jsp/agents/agents-list.jsp)). Copies of the notices may not be sold for profit without prior written agreement.

## NUMERICAL INDEX OF NOTICES TO MARINERS

### Edition No 22

Notices	Aus Chart, INT Chart, ENC Cell, AHP, BA Pubs
<a href="#">923</a>	Aus 53, 54, 207, 753, 762, SLB 104
<a href="#">924</a>	Aus 809
<a href="#">925</a>	Aus 806, 807, 808, 810, 811, 812, 813
<a href="#">926</a>	Aus 209
<a href="#">927</a>	Aus 490, 818, 819, 4635, INT 635
<a href="#">928</a>	Aus 819
<a href="#">929</a>	Aus 258, 829
<a href="#">930</a>	Aus 292, 839
<a href="#">931</a>	Aus 835
<a href="#">932</a>	PNG 508, 509
<a href="#">933</a>	Aus 377, 840, PNG 378, 379, 502, 626
<a href="#">934</a>	Aus 293, 299
<a href="#">935</a>	Aus 292, 293, 296, 700, 839, 841
<a href="#">936</a>	Aus 312
<a href="#">937</a>	Aus 320, 730
<a href="#">938</a>	Aus 84
<a href="#">939</a>	Aus 116, 755
<a href="#">940</a>	Aus 64
<a href="#">941</a>	Aus 348
<a href="#">942</a>	Aus 136
<a href="#">943</a>	SLB 101, 201, 303, 304
<a href="#">944(T)</a>	Aus 222, 812, 813
<a href="#">945(T)</a>	Aus 192
<a href="#">946(T)</a>	Aus 830
<a href="#">947(T)</a>	Aus 235, 236
<a href="#">948(T)</a>	Aus 236
<a href="#">949(T)</a>	Aus 236
<a href="#">950(T)</a>	Aus 614, 4602, 4604, 4621, INT 602, 604, 621
<a href="#">951(T)</a>	Aus 4604, 4634, INT 604, 634
<a href="#">952(T)</a>	Aus 840, 841
<a href="#">953(T)</a>	Aus 293, 296, 299, 700
<a href="#">954(T)</a>	Aus 320, 323, 730, 732
<a href="#">955(T)</a>	Aus 323, 324
<a href="#">956(T)</a>	Aus 53
<a href="#">957(T)</a>	Aus 53, 54
<a href="#">958(T)</a>	Aus 54
<a href="#">959(T)</a>	Aus 53, 54
<a href="#">960(T)</a>	Aus 54
<a href="#">961(T)</a>	Aus 754, 4725, 4726, INT 725, 726
<a href="#">962(T)</a>	Aus 143
<a href="#">963(T)</a>	Aus 143, 144
<a href="#">964(T)</a>	Aus 164

## NUMERICAL INDEX OF CHARTS AFFECTED

### Edition No 22

Aus Chart	Notices
Aus 53	923, 956(T), 957(T), 959(T)
Aus 54	923, 957(T), 958(T), 959(T), 960(T)
Aus 64	940
Aus 84	938
Aus 116	939
Aus 136	942
Aus 143	962(T), 963(T)
Aus 144	963(T)
Aus 164	964(T)
Aus 192	945(T)
Aus 207	923
Aus 209	926
Aus 222	944(T)
Aus 235	947(T)
Aus 236	947(T), 948(T), 949(T)
Aus 258	929
Aus 292	930, 935
Aus 293	934, 935, 953(T)
Aus 296	935, 953(T)
Aus 299	934, 953(T)
Aus 312	936
Aus 320	937, 954(T)
Aus 323	954(T), 955(T)
Aus 324	955(T)
Aus 348	941
Aus 377	933
Aus 490	927
Aus 614	950(T)
Aus 700	935, 953(T)
Aus 730	937, 954(T)
Aus 732	954(T)
Aus 753	923
Aus 754	961(T)
Aus 755	939
Aus 762	923
Aus 806	925
Aus 807	925
Aus 808	925
Aus 809	924
Aus 810	925
Aus 811	925
Aus 812	925, 944(T)
Aus 813	925, 944(T)
Aus 818	927
Aus 819	927, 928
Aus 829	929
Aus 830	946(T)
Aus 835	931
Aus 839	930, 935
Aus 840	933, 952(T)
Aus 841	935, 952(T)
Aus 4602	950(T)
Aus 4604	950(T), 951(T)
Aus 4621	950(T)

Aus Chart	Notices
Aus 4634	951(T)
Aus 4635	927
Aus 4725	961(T)
Aus 4726	961(T)
PNG 378	933
PNG 379	933
PNG 502	933
PNG 508	932
PNG 509	932
PNG 626	933
SLB 101	943
SLB 104	923
SLB 201	943
SLB 303	943
SLB 304	943

INT Chart	Notices
INT 602	950(T)
INT 604	950(T), 951(T)
INT 621	950(T)
INT 634	951(T)
INT 635	927
INT 725	961(T)
INT 726	961(T)

**923 AUSTRALIA - Products - New Charts, New Editions, Withdrawn Charts**  
Australian Hydrographic Office

**New Charts**

Chart	Title and Geographical limits	Scale	Publication Date	Remarks
NIL				

**New Electronic Navigation Chart (Aus ENC)**

Cell Name	Title	Publication Date	Remarks
PG311153	Papua New Guinea - Solomon Sea - Cell 05	28 October 2021	AU311153 has been withdrawn.
PG312148	Papua New Guinea - Coral Sea - Cell 05	28 October 2021	AU312148 has been withdrawn.

**New Editions and Withdrawn Charts**

Chart	Title	Scale	Publication Date	Remarks
Aus 53 (Edition 8)	Australia - North West Coast - Western Australia - Approaches to Port Hedland	1:50 000	29 October 2021	New edition to amend chart coverage, general updating throughout including latest bathymetric data. <b>Chart Aus 53 Edition 7 dated 13 November 2020 is now superseded and must be withdrawn from use.</b>
Aus 207 (Edition 5)	Australia - East Coast - New South Wales - Approaches to Newcastle Inset: Hexham Reach	1:25 000  1:25 000	29 October 2021	New edition with general updating throughout; including latest bathymetric data. <b>Chart Aus 207 Edition 4 dated 28 May 2021 is now superseded and must be withdrawn from use.</b>
Aus 753 (Edition 4)	Australia - West Coast - Western Australia - Beagle Islands to Lancelin	1:150 000	29 October 2021	New edition with general updating throughout; including latest bathymetric data. <b>Chart Aus 753 Edition 3 dated 14 August 2009 is now superseded and must be withdrawn from use.</b>
Aus 762 (Edition 3)	Australia - South Coast - Western Australia - Investigator Island to Cape Le Grand	1:150 000	29 October 2021	New edition with general updating throughout; including latest bathymetric data. <b>Chart Aus 762 Edition 2 dated 30 January 2009 is now superseded and must be withdrawn from use.</b>
SLB104 (Edition 2)	South Pacific Ocean - Solomon Islands - Anchorages in the Solomon Islands Plans: Santa Isabel Island - Maringe Lagoon Santa Isabel Island - Thousand Ships Bay Malaita Island - Kwai Harbour to Uru Island Anchorage Santa Isabel Island - Allardyce Harbour Malaita Island - Bina Harbour Malaita Island - Auki Harbour Malaita Island - Kwakwaru Harbour	   1:75 000 1:75 000  1:50 000 1:20 000 1:20 000 1:12 500 1:10 000	29 October 2021	New edition with general updating throughout; including latest bathymetric data for Bina Harbour. <b>Chart SLB104 Edition 1 dated 11 August 2017 is now superseded and must be withdrawn from use.</b>

923

**AUSTRALIA - Products - New Charts, New Editions, Withdrawn Charts****Charts withdrawn without replacement**

<i>Chart</i>	<i>Title</i>	<i>Scale</i>	<i>Publication Date</i>
Aus 54	Australia - North West Coast - Western	1:7 500	13 November 2020
<b>Edition 3</b>	Australia - Port Hedland		

**Chart permanently withdrawn**

Charts listed above as withdrawn no longer meet chart carriage requirements and should be marked as "superseded" and replaced with the new chart/ new edition listed prior to passage through the area covered by the new chart.

When placing orders with a chart agent between notice of forthcoming edition and its publication, mariners should advise whether their order pertains to the current edition or the new edition.

For further details refer to the AHO website at [www.hydro.gov.au](http://www.hydro.gov.au) for new edition and new chart stock arrival information.

924

**AUSTRALIA - Products - New Charts and New Editions to be published shortly**

Australian Hydrographic Office

**New Charts to be published shortly**

<i>Chart</i>	<i>Title</i>	<i>Scale</i>	<i>Remarks</i>
NIL			

**New Editions to be published shortly**

<i>Chart</i>	<i>Title</i>	<i>Scale</i>	<i>Remarks</i>
Aus 809	Australia - East Coast - New South Wales - Port Jackson to Port Stephens	1:150 000	New edition with general updating throughout; including latest bathymetric data.

**925 AUSTRALIA - NEW SOUTH WALES - Bermagui to Point Danger - Fish aggregating devices**

Department of Primary Industries - Fisheries

**Aus 806** [136/2021]

Amend	light buoy to <i>Fl. Y. 5s FAD (Nov-May)</i>	36° 25'.3 S	150° 16'.0 E
-------	--	-------------	--------------

**Aus 807** [548/2021]

Amend	light buoy to <i>Fl. Y. 5s FAD (Oct-May)</i>	34° 57'.8 S	150° 58'.5 E
	light buoy to <i>Fl. Y. 5s FAD (Oct-May)</i>	35° 22'.7 S	150° 41'.8 E
	light buoy to <i>Fl. Y. 5s FAD (Oct-May)</i>	35° 50'.0 S	150° 22'.6 E

**Aus 808** [309/2021]

Amend	light buoy to <i>Fl. Y. 5s FAD (Oct-May)</i>	33° 55'.0 S	151° 24'.8 E
	light buoy to <i>Fl. Y. 5s FAD (Oct-May)</i>	34° 27'.3 S	151° 04'.3 E
	light buoy to <i>Fl. Y. 5s FAD (Oct-May)</i>	34° 33'.7 S	151° 00'.6 E
	light buoy to <i>Fl. Y. 5s FAD (Oct-May)</i>	34° 41'.0 S	150° 59'.5 E
	light buoy to <i>Fl. Y. 5s FAD (Oct-May)</i>	34° 57'.8 S	150° 58'.5 E

**Aus 810** [529/2020]

Insert	special conical light buoy, <i>Fl. Y. 5s FAD (Oct-May)</i> , without topmark	32° 47'.66 S	152° 24'.10 E
Amend	light buoy to <i>Fl. Y. 5s FAD (Sep-Jun)</i>	32° 13'.2 S	152° 40'.7 E
	light buoy to <i>Fl. Y. 5s FAD (Oct-May)</i>	32° 47'.0 S	152° 24'.7 E

**Aus 811** [422/2021]

Insert	special conical light buoy, <i>Fl. Y. 5s FAD (Sep-Jun)</i> , without topmark	31° 00'.64 S	153° 07'.80 E
Amend	light buoy to <i>Fl. Y. 5s FAD (Sep-Jun)</i>	30° 39'.6 S	153° 08'.9 E
	light buoy to <i>Fl. Y. 5s FAD (Sep-Jun)</i>	30° 50'.5 S	153° 11'.8 E
	light buoy to <i>Fl. Y. 5s FAD (Sep-Jun)</i>	31° 24'.6 S	153° 04'.7 E
	light buoy to <i>Fl. Y. 5s FAD (Sep-Jun)</i>	31° 39'.6 S	152° 56'.2 E
	light buoy to <i>Fl. Y. 5s FAD (Sep-Jun)</i>	31° 47'.0 S	152° 55'.2 E

**Aus 812** [529/2020]

Insert	out of position special conical light buoy, <i>Fl. Y. 5s FAD (Sep-Jun)</i> , without topmark	29° 32'.48 S	153° 26'.52 E
Amend	light buoy to <i>Fl. Y. 5s FAD (Sep-Jun)</i>	30° 39'.6 S	153° 08'.9 E

**Aus 813** [865/2021]

Insert	out of position special conical light buoy, <i>Fl. Y. 5s FAD (Sep-Jun)</i> , without topmark	29° 32'.48 S	153° 26'.52 E
--------	--	--------------	---------------

**926 AUSTRALIA - NEW SOUTH WALES - Stockton Bight - Depths**

Australian Hydrographic Office

Note: Smaller scale charts will be updated in due course.

**Aus 209** [853/2018]

Insert	accompanying ZOC diagram	32° 46'.2 S	152° 01'.4 E
	accompanying block A	32° 47'.4 S	152° 02'.1 E
	accompanying block B	32° 47'.4 S	152° 05'.9 E

**927 AUSTRALIA - QUEENSLAND - Bunker Group - Lady Musgrave Island - Light**

Australian Maritime Safety Authority Final ATH 13/2021

**Aus 490 [733/2021]**

Amend	light range to 16M	23° 54'.5 S	152° 23'.5 E
-------	--------------------	-------------	--------------

**Aus 818 [869/2021]**

Amend	light range to 16M	23° 54'.5 S	152° 23'.5 E
-------	--------------------	-------------	--------------

**Aus 819 [869/2021]**

Amend	light range to 16M	23° 54'.5 S	152° 23'.5 E
-------	--------------------	-------------	--------------

**Aus 4635 (INT 635) [731/2021]**

Amend	light range to 16M	23° 54'.5 S	152° 23'.5 E
-------	--------------------	-------------	--------------

**928 AUSTRALIA - QUEENSLAND - Bustard Head to North Reef - ZOC diagram**

Australian Hydrographic Office

**Aus 819 [927/2021]**

Insert	accompanying ZOC diagram	24° 00'.2 S	151° 12'.4 E
--------	--------------------------	-------------	--------------

**929 AUSTRALIA - QUEENSLAND - Dunk Island - Clump Point - Infrastructure; nav aids; depths**

Maritime Safety Queensland

**Aus 258 (Dunk Island) [594/2020]**

Insert	accompanying block	17° 51'.5 S	146° 07'.5 E
--------	--------------------	-------------	--------------

**Aus 829 [864/2019]**

Insert	light beacon, Fl.R.2-5s, with port lateral topmark	17° 51'.10 S	146° 06'.90 E
--------	--	--------------	---------------

Delete	light	17° 51'.2 S	146° 07'.0 E
--------	-------	-------------	--------------

**930 AUSTRALIA - QUEENSLAND - Harrington Reef - Topmark; land elevation**

Australian Maritime Safety Authority Final ATH 14/2021

**Aus 292 [468/2021]**

Delete	land elevation (8)	10° 49'.2 S	142° 43'.3 E
	topmark	10° 49'.2 S	142° 43'.2 E

**Aus 839 [834/2021]**

Delete	land elevation (8)	10° 49'.2 S	142° 43'.3 E
	topmark	10° 49'.2 S	142° 43'.2 E

**931 AUSTRALIA - QUEENSLAND - Hazel Reef - Beacon**

Australian Maritime Safety Authority Final ATH 12/2021

**Aus 835 [469/2021]**

Delete	topmark	12° 16'.7 S	143° 18'.1 E
--------	---------	-------------	--------------

**932 PAPUA NEW GUINEA - Daiwari Island - Depths southwards**

UKHO

**PNG 508 [905/2020]**

Replace	depth, 7 <sub>4</sub> m, with depth, 5 <sub>3</sub> m	10° 22'.8 S	151° 03'.5 E
---------	---	-------------	--------------

**PNG 509 [905/2020]**

Replace	depth, 7 <sub>4</sub> m, with depth, 5 <sub>3</sub> m	10° 22'.8 S	151° 03'.5 E
---------	---	-------------	--------------



**933 PAPUA NEW GUINEA - Daru Island to Kerema Bay - Submarine cables**  
National Maritime Safety Authority PNG , 33 Below Pty Ltd

**Aus 377 [852/2020]**

Insert submarine cable, between

9° 04'.52 S	143° 16'.06 E
9° 05'.61 S	143° 17'.64 E
9° 07'.72 S	143° 17'.82 E
9° 09'.07 S	143° 19'.54 E
9° 11'.50 S	143° 25'.73 E
9° 11'.57 S	143° 29'.82 E
9° 09'.78 S	143° 37'.60 E
9° 08'.67 S	143° 39'.41 E
9° 05'.87 S	143° 46'.59 E
8° 56'.25 S	144° 01'.47 E
8° 54'.90 S	144° 02'.91 E

**Aus 840 [834/2021]**

Insert submarine cable, between

9° 04'.07 S	143° 12'.68 E
9° 03'.45 S	143° 12'.79 E
9° 03'.24 S	143° 14'.20 E
9° 05'.61 S	143° 17'.64 E
9° 07'.72 S	143° 17'.82 E
9° 09'.07 S	143° 19'.54 E
9° 11'.50 S	143° 25'.73 E
9° 11'.57 S	143° 29'.82 E
9° 09'.78 S	143° 37'.60 E
9° 08'.67 S	143° 39'.41 E
9° 05'.87 S	143° 46'.59 E
9° 01'.20 S	143° 53'.81 E

**PNG 378 [833/2021]**

Insert submarine cable, between

09° 04'.07 S	143° 12'.68 E
09° 03'.45 S	143° 12'.79 E
09° 03'.24 S	143° 14'.20 E
09° 05'.61 S	143° 17'.64 E
09° 07'.72 S	143° 17'.82 E
09° 09'.07 S	143° 19'.54 E
09° 11'.50 S	143° 25'.73 E
09° 11'.57 S	143° 29'.82 E
09° 09'.78 S	143° 37'.60 E
09° 08'.67 S	143° 39'.41 E
09° 05'.87 S	143° 46'.59 E
08° 56'.25 S	144° 01'.47 E
08° 46'.80 S	144° 11'.60 E
08° 38'.72 S	144° 16'.84 E
08° 26'.03 S	144° 21'.86 E
08° 07'.95 S	144° 29'.13 E
08° 07'.21 S	144° 29'.68 E
07° 58'.11 S	145° 46'.43 E
08° 02'.31 S	145° 45'.12 E
08° 04'.99 S	145° 42'.99 E
08° 06'.95 S	145° 39'.79 E
08° 07'.96 S	145° 38'.72 E
08° 08'.04 S	145° 38'.08 E
08° 08'.69 S	145° 37'.60 E
08° 10'.00 S	145° 35'.00 E
08° 12'.54 S	145° 31'.21 E
08° 13'.14 S	145° 31'.04 E

submarine cable, between

**PNG 379 [NC 7/8/2020]**

Insert submarine cable, between

8° 11'.21 S	145° 33'.20 E
8° 10'.00 S	145° 35'.00 E
8° 08'.69 S	145° 37'.60 E
8° 08'.04 S	145° 38'.08 E
8° 07'.96 S	145° 38'.72 E
8° 06'.95 S	145° 39'.79 E
8° 04'.99 S	145° 42'.99 E
8° 02'.31 S	145° 45'.12 E
7° 58'.11 S	145° 46'.43 E

**933 PAPUA NEW GUINEA - Daru Island to Kerema Bay - Submarine cables****PNG 502** [NC 30/10/2020]

Insert	submarine cable, between	8° 10'.76 S	144° 28'.00 E
		8° 07'.95 S	144° 29'.13 E
		8° 07'.21 S	144° 29'.68 E
	submarine cable, between	07° 58'.11 S	145° 46'.43 E
		08° 02'.31 S	145° 45'.12 E
		08° 04'.99 S	145° 42'.99 E
		08° 06'.95 S	145° 39'.79 E
		08° 07'.96 S	145° 38'.72 E
		08° 08'.04 S	145° 38'.08 E
		08° 08'.69 S	145° 37'.60 E
		08° 10'.00 S	145° 35'.00 E
		08° 12'.54 S	145° 31'.21 E
		08° 13'.14 S	145° 31'.04 E

**PNG 502 (Kerema Bay)** [NC 30/10/2020]

Insert	submarine cable, between	7° 59'.500 S	145° 45'.996 E
		7° 58'.110 S	145° 46'.431 E

**PNG 626** [NC 6/3/2020]

Insert	submarine cable, between	9° 04'.074 S	143° 12'.675 E
		9° 03'.594 S	143° 12'.744 E
		9° 03'.383 S	143° 12'.891 E
		9° 03'.336 S	143° 13'.143 E
		9° 03'.352 S	143° 13'.275 E
		9° 03'.419 S	143° 13'.433 E
		9° 03'.409 S	143° 13'.611 E
		9° 03'.254 S	143° 13'.935 E
		9° 03'.241 S	143° 14'.055 E
		9° 03'.287 S	143° 14'.201 E
		9° 03'.511 S	143° 14'.535 E
		9° 03'.551 S	143° 14'.642 E
		9° 03'.565 S	143° 14'.742 E
		9° 03'.603 S	143° 14'.850 E
		9° 03'.785 S	143° 15'.137 E
		9° 04'.404 S	143° 15'.782 E
		9° 04'.535 S	143° 16'.043 E
		9° 04'.633 S	143° 16'.388 E
		9° 05'.005 S	143° 16'.949 E
		9° 05'.202 S	143° 17'.081 E
		9° 05'.347 S	143° 17'.131 E
		9° 05'.467 S	143° 17'.260 E
		9° 05'.596 S	143° 17'.565 E
		9° 05'.772 S	143° 17'.686 E
		9° 06'.038 S	143° 17'.737 E
		9° 06'.618 S	143° 17'.730 E
		9° 07'.087 S	143° 17'.663 E
		9° 07'.555 S	143° 17'.822 E
		9° 08'.044 S	143° 18'.204 E
		9° 08'.752 S	143° 19'.074 E
		9° 09'.392 S	143° 20'.374 E
		9° 10'.598 S	143° 23'.039 E
		9° 10'.682 S	143° 23'.360 E

**934 AUSTRALIA - TORRES STRAIT - Goods Island - Light sectors**

Australian Maritime Safety Authority Final ATH 12/2021

**Aus 293** [874/2021]

Delete	light sector, W 290° - 295° (005°), emanating from light	10° 33'.91 S	142° 09'.13 E
--------	--	--------------	---------------

**Aus 299** [874/2021]

Insert	light sector, W 064° - 238° (174°), emanating from light	10° 33'.91 S	142° 09'.13 E
--------	--	--------------	---------------

Delete	obscured light sectors with legend, Obscd, emanating from light	10° 33'.91 S	142° 09'.13 E
--------	---	--------------	---------------

**935 AUSTRALIA - TORRES STRAIT - Varzin Passage to Alpha Rock - Light buoys**

EGS Survey Pty Ltd

**Aus 292 [930/2021]**

Insert	special topmark	10° 28'.29 S	142° 26'.80 E
	special topmark	10° 36'.40 S	142° 30'.70 E

**Aus 293 [934/2021]**

Insert	special topmark	10° 28'.294 S	142° 26'.800 E
	special topmark	10° 31'.202 S	142° 10'.485 E

**Aus 296 [468/2021]**

Insert	special topmark	10° 32'.087 S	141° 51'.890 E
	special topmark	10° 33'.408 S	141° 59'.499 E

**Aus 700 [468/2021]**

Insert	special topmark	10° 33'.41 S	141° 59'.50 E
--------	-----------------	--------------	---------------

**Aus 839 [930/2021]**

Insert	special topmark	10° 28'.29 S	142° 26'.80 E
	special topmark	10° 36'.40 S	142° 30'.70 E

**Aus 841 [468/2021]**

Insert	special topmark	10° 28'.29 S	142° 26'.80 E
--------	-----------------	--------------	---------------

**936 AUSTRALIA - TIMOR SEA - Timor Sea - Sahul Banks - Buoys**

Swire Pacific Offshore , RPS MetOcean

**Aus 312 [415/2020]**

Insert	accompanying block	11° 03'.5 S	126° 38'.1 E
--------	--------------------	-------------	--------------

**937 AUSTRALIA - WESTERN AUSTRALIA - Booby Island - Rock**

MMA Offshore

**Aus 320 [876/2021]**

Insert	insert depth, 1 <sub>4</sub> m, enclosed by danger circle with legend, R	15° 04'.55 S	124° 20'.44 E
--------	--	--------------	---------------

Delete	depth, 3 <sub>2</sub> m	15° 04'.5 S	124° 20'.1 E
--------	-------------------------	-------------	--------------

**Aus 730 [273/2021]**

Insert	insert depth, 1 <sub>4</sub> m, enclosed by danger circle with legend, R	15° 04'.55 S	124° 20'.44 E
--------	--	--------------	---------------

**938 AUSTRALIA - WESTERN AUSTRALIA - Jurien Bay - Light beacon**

Department of Transport WA

**Aus 84 (Jurien Bay) [NE 24/1/2020]**

Insert	accompanying block	30° 18'.0 S	114° 59'.8 E
--------	--------------------	-------------	--------------

**939 AUSTRALIA - WESTERN AUSTRALIA - Mandurah - Buoys**

Department of Transport WA

**Aus 116 (Entrance to Mandurah Estuary) [803/2020]**

Insert	spar buoy without topmark	32° 30'.120 S	115° 42'.440 E
	spar buoy without topmark	32° 30'.690 S	115° 43'.300 E
	spar buoy without topmark	32° 30'.903 S	115° 42'.305 E

**Aus 755 [688/2021]**

Insert	spar buoy without topmark	32° 29'.93 S	115° 43'.60 E
	spar buoy without topmark	32° 30'.12 S	115° 42'.44 E

**940 AUSTRALIA - WESTERN AUSTRALIA - Port of Ashburton - Pipeline**  
Pilbara Ports Authority

**Aus 64 [781/2021]**

Delete	pipeline and legend, Sewer, between	21° 40'.1 S	115° 00'.8 E
		21° 41'.1 S	115° 00'.8 E

**941 AUSTRALIA - SOUTH AUSTRALIA - Bungaloo Bay - Navline**  
Department for Infrastructure and Transport SA

**Aus 348 [319/2021]**

Insert	a dashed line in a direction 214·5° for a distance of 1.35M, thence a continuous line for 1.78M, with legend 034·5°, emanating from light	37° 57'.10 S	140° 28'.48 E
--------	---	--------------	---------------

Delete	dashed and continuous line with legend, 037·7°, emanating from light	37° 57'.1 S	140° 28'.5 E
--------	--	-------------	--------------

**942 AUSTRALIA - SOUTH AUSTRALIA - Germein Bay - Depth**  
HydroSurvey Australia

**Aus 136 [630/2021]**

Insert	depth, 4 <sub>9</sub> m, and extend contour N to enclose	33° 03'.57 S	137° 58'.07 E
--------	--	--------------	---------------

**943 SOLOMON ISLANDS - Honiara - Depths; light**  
HMAS *Leeuwin*, Solomon Islands Maritime Authority Notice 16/2021

**SLB 101 (Lungga Roads) [839/2021]**

Insert	accompanying block B	9° 25'.7 S	159° 57'.8 E
--------	----------------------	------------	--------------

**SLB 101 (Honiara) [839/2021]**

Insert	accompanying block A	9° 25'.6 S	159° 57'.6 E
--------	----------------------	------------	--------------

**SLB 201 [783/2021]**

Delete	light	9° 25'.6 S	159° 57'.5 E
--------	-------	------------	--------------

**SLB 303 [NE 21/2/2020]**

Delete	light	9° 25'.6 S	159° 57'.5 E
--------	-------	------------	--------------

**SLB 304 [348/2020]**

Delete	light	9° 25'.6 S	159° 57'.5 E
--------	-------	------------	--------------

**944(T)/2021 AUSTRALIA - NEW SOUTH WALES - Clarence River - Harwood - Harbour works completed***Former Notice* - 213(T)/2017 is cancelled

NSW Roads and Maritime Services Notice NH1723

Cancel this notice on receipt.

**Chart formerly affected - Aus 222 - Aus 812 - Aus 813****945(T)/2021 AUSTRALIA - NEW SOUTH WALES - Twofold Bay - Scientific instruments recovered***Former Notice* - 559(T)/2017 is cancelled

Port Authority of New South Wales Notice PA2/2017

Cancel this notice on receipt.

**Chart formerly affected - Aus 192****946(T)/2021 AUSTRALIA - QUEENSLAND - Great Barrier Reef - Jenny Louise Shoal - Light buoy off station eastwards**

Maritime Safety Queensland Notice 368(T)/2021

The special light buoy, *Fl(5)Y.20s* (16° 44'.57 S 146° 24'.54 E), is off station.**Chart temporarily affected - Aus 830****947(T)/2021 AUSTRALIA - QUEENSLAND - Moreton Bay - Spitfire Channel - Scientific instruments recovered***Former Notice* - 408(T)/2018 is cancelled

Maritime Safety Queensland

Cancel this notice on receipt.

**Chart formerly affected - Aus 235 - Aus 236****948(T)/2021 AUSTRALIA - QUEENSLAND - Moreton Bay - Lamb Island - Light buoy recovered; wreck salvaged***Former Notice* - 975(T)/2018 is cancelled

Maritime Safety Queensland

Cancel this notice on receipt.

**Chart formerly affected - Aus 236****949(T)/2021 AUSTRALIA - QUEENSLAND - Moreton Bay - Green Island - Light beacon destroyed**

Maritime Safety Queensland Notice 383(T)/2021

The light beacon, *Fl.R.3s* (27° 24'.87 S 153° 14'.57 E), has been destroyed.**Chart temporarily affected - Aus 236****950(T)/2021 AUSTRALIA - CORAL SEA - Lihou Reef - Light relit***Former Notice* - 385(T)/2021 is cancelled

Australian Maritime Safety Authority

Cancel this notice on receipt.

**Chart formerly affected - Aus 614 - Aus 4602 (INT 602) - Aus 4604 (INT 604) - Aus 4621 (INT 621)**

**951(T)/2021 AUSTRALIA - CORAL SEA - Mellish Reef - Light buoy off station northeastwards**

*Former Notice* - 847(T)/2021 is cancelled  
Australian Bureau of Meteorology

The light buoy, *Fl. Y. 2s* (15° 51'.0 S 158° 27'.6 E), is off station.

**Chart temporarily affected - Aus 4604 (INT 604) - Aus 4634 (INT 634)**

**952(T)/2021 PAPUA NEW GUINEA - Saibai Island - Wreck**

Australian Maritime Safety Authority

A stranded wreck exists in position 9° 19'.7 S 142° 45'.6 E.

Mariners are advised to navigate with caution in the area. 1M clearance requested.

**Chart temporarily affected - Aus 840 - Aus 841**

**953(T)/2021 AUSTRALIA - TORRES STRAIT - Goods Island - Lights restored**

*Former Notice* - 848(T)/2021 is cancelled  
Australian Maritime Safety Authority Final ATH 12/2021

Cancel this notice on receipt.

**Chart formerly affected - Aus 293 - Aus 296 - Aus 299 - Aus 700**

**954(T)/2021 AUSTRALIA - WESTERN AUSTRALIA - Champagny Islands - Survey operations**

*Former Notice* - 798(T)/2021 is cancelled  
MMA Offshore

MV *Ocean Dynasty* and MV *Empress* are conducting survey operations in an area bounded by the following positions:

15° 21'.96 S 123° 54'.46 E  
15° 00'.88 S 124° 10'.33 E  
15° 07'.90 S 124° 25'.81 E  
15° 22'.60 S 124° 15'.01 E  
15° 27'.51 S 124° 21'.40 E  
15° 31'.81 S 124° 09'.25 E.

Special buoys exist in the following positions:

15° 04'.80 S 124° 20'.20 E  
15° 09'.90 S 124° 25'.80 E  
15° 15'.20 S 124° 20'.80 E  
15° 17'.90 S 124° 11'.30 E  
15° 21'.50 S 124° 16'.50 E  
15° 26'.20 S 124° 22'.40 E  
15° 31'.70 S 124° 23'.80 E  
15° 32'.50 S 124° 11'.00 E  
15° 28'.76 S 124° 03'.04 E  
15° 22'.20 S 124° 52'.50 E  
15° 10'.30 S 124° 01'.80 E  
15° 00'.60 S 124° 10'.70 E.

Special light buoys, *Q. Y.*, exist in the following positions:

15° 15'.52 S 124° 20'.43 E  
15° 28'.58 S 124° 03'.08 E  
15° 31'.88 S 124° 23'.64 E.

Mariners are advised to navigate with caution in the area. 2M clearance requested.

**Chart temporarily affected - Aus 320 - Aus 323 - Aus 730 - Aus 732**

**955(T)/2021 AUSTRALIA - WESTERN AUSTRALIA - Lacepede Channel - Survey operations completed; tide gauges removed**

*Former Notice - 711(T)/2021 is cancelled*  
Fugro

Cancel this notice on receipt.

**Chart formerly affected - Aus 323 - Aus 324**

**956(T)/2021 AUSTRALIA - WESTERN AUSTRALIA - Port Hedland - Scientific instruments**

Pilbara Ports Authority Notice 15(T)/2020

Scientific instruments exist in the following positions:

20° 18'.27 S 118° 31'.00 E

20° 17'.79 S 118° 35'.44 E

20° 17'.69 S 118° 34'.67 E.

Mariners are advised to navigate with caution in the area.

**Chart temporarily affected - Aus 53**

**957(T)/2021 AUSTRALIA - WESTERN AUSTRALIA - Port Hedland - Scientific instruments**

*Former Notice - 972(T)/2020 is cancelled*  
Pilbara Ports Authority Notice 15(T)/2020

Cancel this notice on receipt.

**Chart formerly affected - Aus 53 - Aus 54**

**958(T)/2021 AUSTRALIA - WESTERN AUSTRALIA - Port Hedland - Harbour works**

*Former Notice - 455(T)/2021 is cancelled*  
Pilbara Ports Authority Notice PH 6(T)/2021

Cancel this notice on receipt.

**Chart formerly affected - Aus 54**

**959(T)/2021 AUSTRALIA - WESTERN AUSTRALIA - Port Hedland - Dredging operations completed**

*Former Notice - 610(T)/2021 is cancelled*  
Pilbara Ports Authority Notice PH 10(T)/2021

Cancel this notice on receipt.

**Chart formerly affected - Aus 53 - Aus 54**

**960(T)/2021 AUSTRALIA - WESTERN AUSTRALIA - Port Hedland - Anderson Point Wharf - Light buoy withdrawn**

*Former Notice - 654(T)/2021 is cancelled*  
Pilbara Ports Authority Notice PH 12(T)/2021

Cancel this notice on receipt.

**Chart formerly affected - Aus 54**

**961(T)/2021 AUSTRALIA - WESTERN AUSTRALIA - Rottnest Island - Military exercise**

Department of Defence

The Western Australia Exercise Area (WAXA) will be activated 25 October to 5 November 2021 for a Military Exercise.

This Exercise is to practice coordinated submarine search and rescue operations.

As part of the Exercise, participating submarines will be positioned on the seabed in the area bounded by the following positions:

32° 06'.6 S 115° 14'.8 E  
 32° 06'.6 S 115° 16'.2 E  
 32° 09'.2 S 115° 16'.2 E  
 32° 09'.8 S 115° 16'.0 E  
 32° 09'.8 S 115° 14'.8 E.

Australian military and civilian surface vessels participating in the Exercise will also be operating in this area.

Vessels are advised to avoid these areas during the Exercise.

Vessels that navigate near these areas during the Exercise must do so with additional caution, due to increased Exercise-related vessel traffic and are advised to monitor VHF Ch 16 and ensure their Automatic Identification System (AIS) is operating.

Vessels in these areas may be requested to alter course to facilitate Exercise operations.

Further, surface vessels will also be conducting operations with submarine rescue vehicles and remotely operated vehicles in the vicinity of the following positions:

31° 45'.0 S 115° 12'.0 E,  
 31° 47'.0 S 115° 00'.0 E,  
 32° 04'.0 S 115° 12'.0 E.

Vessels navigating near these positions are requested not to approach with 2M so as not to interfere with underwater operations.

Maritime industry enquiries related to this Exercise should be directed to RAN Maritime Trade Operations via phone +61 (0) 431764980 or email [MTO.OPSO@defence.gov.au](mailto:MTO.OPSO@defence.gov.au).

**Chart temporarily affected - Aus 754 - Aus 4725 (INT 725) - Aus 4726 (INT 726)**

**962(T)/2021 AUSTRALIA - VICTORIA - Port Phillip - Blairgowrie - Dredging operations completed**

Former Notice - 504(T)/2021 is cancelled

Parks Victoria Notice 306(T)/2021

Cancel this notice on receipt.

**Chart formerly affected - Aus 143**

**963(T)/2021 AUSTRALIA - VICTORIA - Port Phillip - South Channel - Shoaling; virtual AIS**

Ports Victoria Notice 298(T)/2021

Shoaling exists in the South Channel and is marked by a special virtual AIS as follows:

<i>Position</i>	<i>Remarks</i>
38° 18'.12 S 144° 44'.35 E	TB6
38° 18'.22 S 144° 44'.35 E	TB7.

Vessels with draught greater than 13.8m are advised to pass clear of TB6 and TB7.

Mariners are advised to navigate with caution in the area.

**Chart temporarily affected - Aus 143 - Aus 144**



**964(T)/2021 AUSTRALIA - TASMANIA - Devonport - Barge**  
Marine and Safety Tasmania Notice 288(T)/2021

A jack-up barge exists in position 41° 11'.17 S 146° 21'.97 E.

The four corners of the barge are marked by flashing yellow lights.

Mariners are advised to navigate with caution in the area.

**Chart temporarily affected - Aus 164**

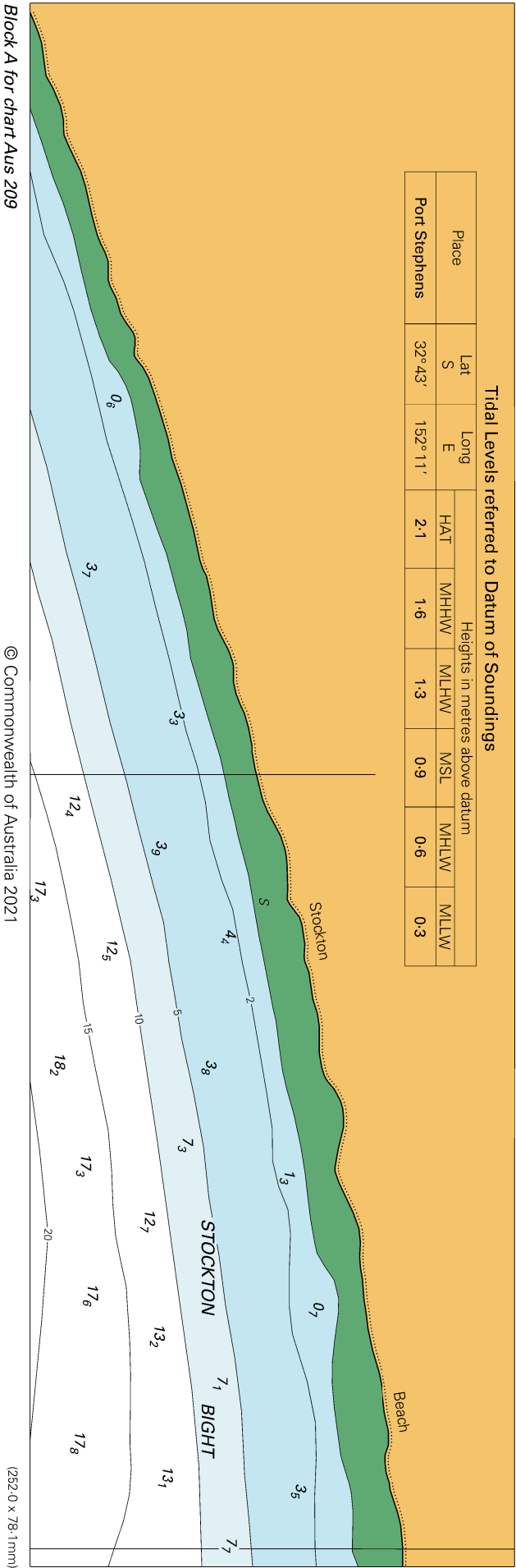
II

**HYDROGRAPHIC REPORTS**

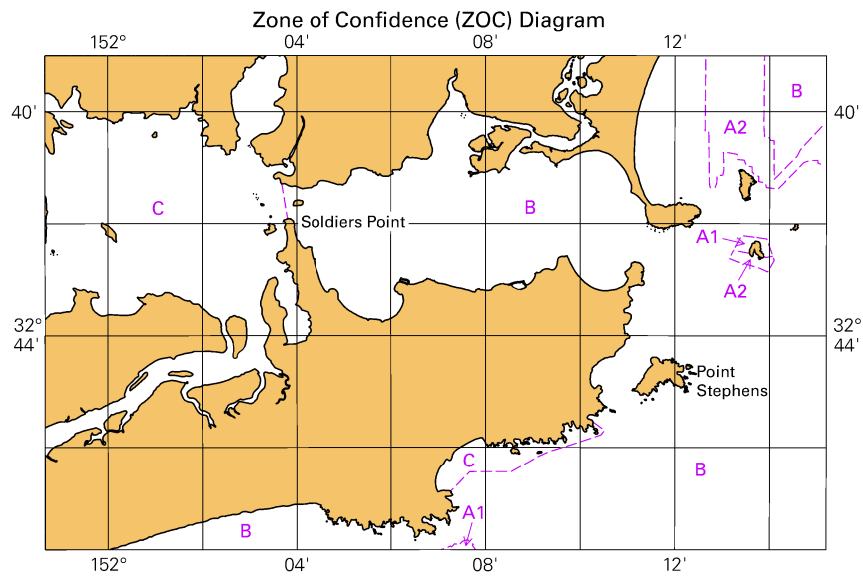
NIL

To accompany Australian Notice to Mariners 926/2021

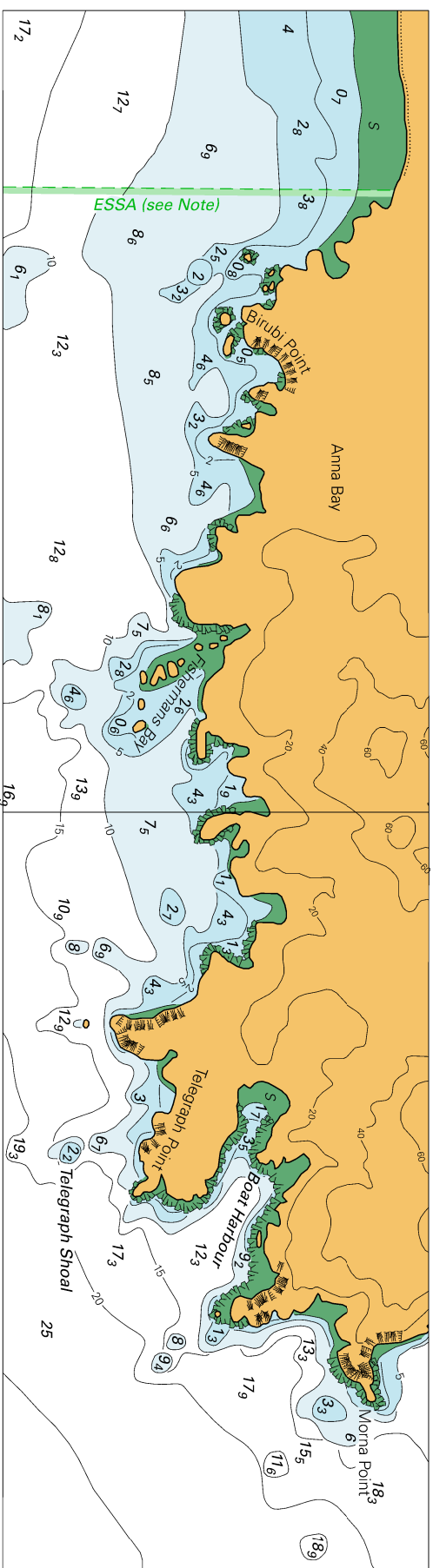
Tidal Levels referred to Datum of Soundings								
Place	Lat	Long	Heights in metres above datum					
			HAT	MHHW	MLHW	MSL	MHLW	MLLW
Port Stephens	32° 43' S	152° 11' E	2.1	1.6	1.3	0.9	0.6	0.3



To accompany Australian Notice to Mariners 926/2021



To accompany Australian Notice to Mariners 926/2021

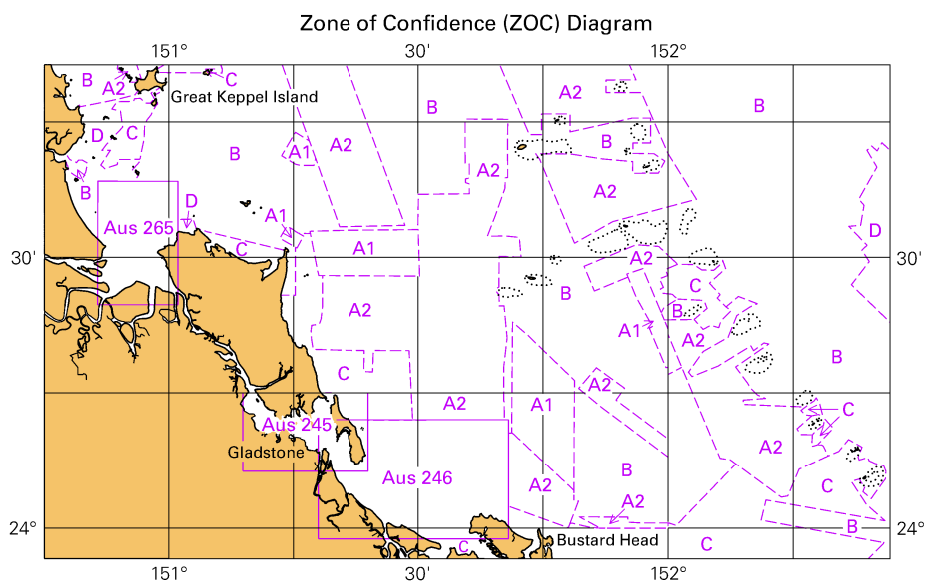


Block B for chart Aus 209

© Commonwealth of Australia 2021

(238.5 x 64.8mm)

To accompany Australian Notice to Mariners 928/2021

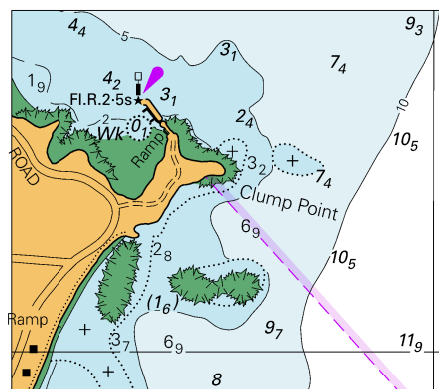


© Commonwealth of Australia 2021

Block for chart Aus 819

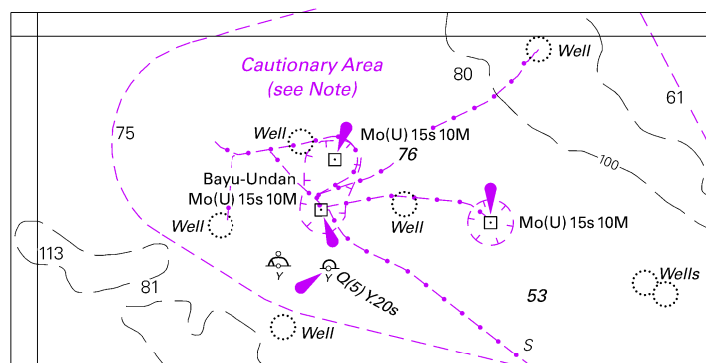
(111.7 x 65.2mm)

*To accompany Australian Notice to Mariners 929/2021*



© Commonwealth of Australia 2021  
**Block for chart Aus 258** (57.8 x 50.4mm)

To accompany Australian Notice to Mariners 936/2021



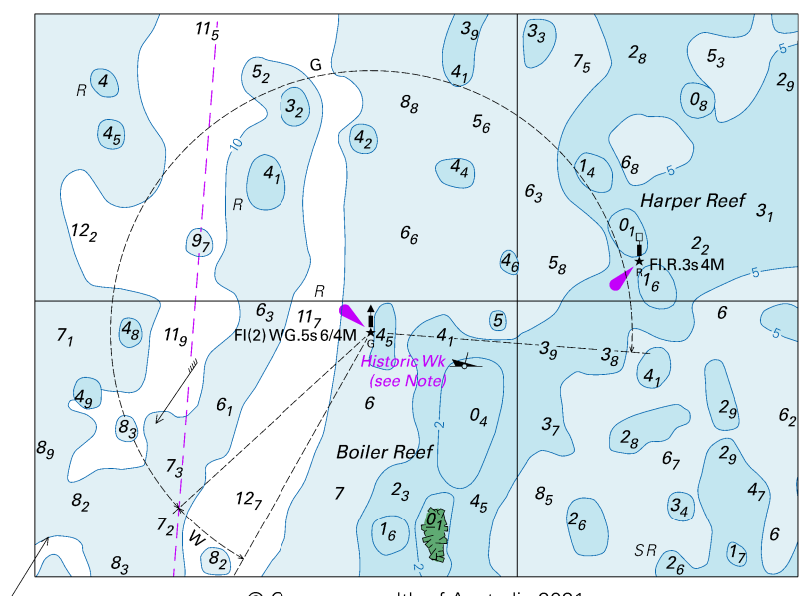
© Commonwealth of Australia 2021

Block for chart Aus 312

(92.9 x 46.6mm)



To accompany Australian Notice to Mariners 938/2021



© Commonwealth of Australia 2021

Block for chart Aus 84

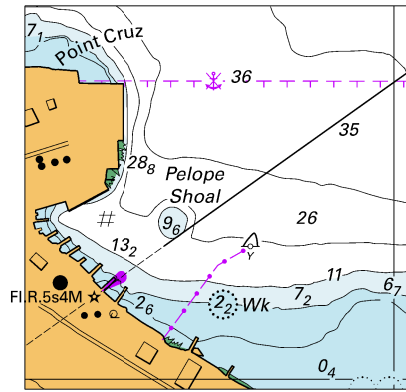
(100.9 x 74.4mm)

The chart is a technical bathymetric map of the Port of Tauranga. It features a grid of latitude and longitude lines. The coastline is shown in black, with various depths marked in meters. Key features include the 'POINT CRUZ' area, the 'International Wharf (10.8m Rep 2016)', the 'Deepwater Berth', and the 'Pelope Shoal'. The chart also shows the 'Kwaeotia' area and the 'Jetty' area. A dashed line indicates the '10m depth' contour. The chart is labeled with 'Co' for 'Coastline' and 'CoS' for 'Coastline of Shoal'. The chart is a technical drawing with a grid of latitude and longitude lines.

*Block A for chart SLB 101*

(101.0 x 190.6mm)

*To accompany Australian Notice to Mariners 943/2021*



© Commonwealth of Australia 2021  
Block B for chart SLB 101 (51.2 x 50.6mm)