



20 August 2021

Edition 17

AUSTRALIAN NOTICES TO MARINERS

Notices 723 - 774

Published fortnightly by the Australian Hydrographic Office



Australian Notices to Mariners are the authority for correcting charts and publications published by the Australian Hydrographic Office covering Australia, Papua New Guinea, Solomon Islands, Australian Antarctic Territory and Timor-Leste.

Commodore S.T. DUNNE RAN
Hydrographer of Australia

SECTIONS.

- I. **Australian Notices to Mariners, including blocks and notes.**
- II. **Hydrographic Reports.**

SUPPLEMENTS.

- I. **Tracings**
- II. **Cumulative List of Australian Notices to Mariners.**
- III. **Cumulative List of Temporary and Preliminary Australian Notices to Mariners.**
- IV. **Temporary and Preliminary Notices in force.**

© Commonwealth of Australia 2021

This work is copyright. Apart from any use permitted under the Copyright Act 1968, no part may be reproduced by any process, adapted, communicated or commercially exploited without prior written permission from The Commonwealth represented by the Australian Hydrographic Office.

IMPORTANT NOTICE

This edition of Notices to Mariners includes all significant information affecting AHO products which the AHO has become aware of since the last edition. All reasonable efforts have been made to ensure the accuracy and completeness of the information, including third party information, on which these updates are based. The AHO regards third parties from which it receives information as reliable, however the AHO cannot verify all such information and errors may therefore exist. The AHO does not accept liability for errors in third party information.

GENERAL INSTRUCTIONS

The substance of these notices should be inserted on the charts affected.

Bearings are referred to the true compass and are reckoned clockwise from North; those relating to lights are given as seen by an observer from seaward.

Positions quoted in notices relate to WGS84 which is the horizontal datum for all charts produced by the Australian Hydrographic Office.

The range quoted for a light is its nominal range.

Depths are with reference to the chart datum of each chart. Heights are above mean high water springs or mean higher high water, as appropriate.

The capital letter (P) or (T) after the number of any notice denotes a preliminary or temporary notice respectively, which are contained separately at the end of the permanent notices.

REPORTING OF DANGERS

Mariners are particularly requested to notify the AUSTRALIAN HYDROGRAPHIC OFFICE, Locked Bag 8801 Wollongong, NSW 2500 (Fax 02-4223 6599, e-mail datacentre@hydro.gov.au or, alternatively by filling in and submitting the [Hydrographic Notes](#) forms located on the web site – www.hydro.gov.au), immediately on the discovery of new dangers or suspected dangers to navigation. For changes or defects in aids to navigation notify AusSAR (Fax 02-6230 6868 or email rccaus@amsa.gov.au).

AUTHORISED USE

Copies of Australian notices are available free of charge from the Australian Hydrographic Office (AHO) website (www.hydro.gov.au) and through the eNotices (email) service (www.hydro.gov.au/enotices/enotices.htm).

Individual Notices may be copied for the purpose of inserting Notice substance on official charts and publications. Paper copies may be printed by chart agents and distributed to customers on a cost recovery basis. Participating chart agents are listed on the AHO website as providing a 'Paper Notices to Mariners' service (www.hydro.gov.au/webapps/jsp/agents/agents-list.jsp). Copies of the notices may not be sold for profit without prior written agreement.

NUMERICAL INDEX OF NOTICES TO MARINERS

Edition No 17

Notices	Aus Chart, INT Chart, ENC Cell, AHP, BA Pubs
723	Aus 119, 240, 241, 247, 817, 819, 820
724	Aus 50, 269
725	Amendment to Australian National Tide Tables 2021
726	Amendment to Mariner's Handbook for Australian Waters AHP20
727	Aus 207
728	Aus 826
729	Aus 815, 816
730	Aus 260, 367, 822
731	Aus 814, 4635, 4643, INT 635, 643
732	Aus 235
733	Aus 490
734	PNG 397, 554
735	Aus 65, 327, 742
736	Aus 802
737(T)	Aus 256, 827
738(T)	Aus 265
739(T)	Aus 247, 265
740(T)	Aus 247, 819
741(T)	Aus 817
742(T)	Aus 240
743(T)	Aus 816, 817
744(T)	Aus 245
745(T)	Aus 245, 247
746(T)	Aus 245, 246, 247
747(T)	Aus 245, 246
748(T)	Aus 240
749(T)	Aus 240
750(T)	Aus 240
751(T)	Aus 240
752(T)	Aus 241
753(T)	Aus 241
754(T)	Aus 817
755(T)	Aus 241, 817
756(T)	Aus 240
757(T)	Aus 241, 817
758(T)	Aus 265
759(T)	Aus 247, 265
760(T)	Aus 814
761(T)	Aus 235, 815
762(T)	Aus 256, 827
763(T)	Aus 247
764(T)	Aus 248, 260, 367, 490, 820, 822
765(T)	Aus 367, 490
766(T)	Aus 260, 367, 490, 822, 823
767(T)	Aus 240, 815, 817
768(T)	Aus 15, 715
769(T)	Aus 314, 321, 4721, 4722, INT 721, 722
770(T)	Aus 53, 326
771(T)	Aus 130, 781
772(T)	Aus 155
773(T)	Aus 357, 487, 4644, INT 644
774(T)	Aus 349, 487, 787, 789

NUMERICAL INDEX OF CHARTS AFFECTED

Edition No 17

Aus Chart	Notices
Aus 15	768(T)
Aus 50	724
Aus 53	770(T)
Aus 65	735
Aus 119	723
Aus 130	771(T)
Aus 155	772(T)
Aus 207	727
Aus 235	732, 761(T)
Aus 240	723, 742(T), 748(T), 749(T), 750(T), 751(T), 756(T), 767(T)
Aus 241	723, 752(T), 753(T), 755(T), 757(T)
Aus 245	744(T), 745(T), 746(T), 747(T)
Aus 246	746(T), 747(T)
Aus 247	723, 739(T), 740(T), 745(T), 746(T), 759(T), 763(T)
Aus 248	764(T)
Aus 256	737(T), 762(T)
Aus 260	730, 764(T), 766(T)
Aus 265	738(T), 739(T), 758(T), 759(T)
Aus 269	724
Aus 314	769(T)
Aus 321	769(T)
Aus 326	770(T)
Aus 327	735
Aus 349	774(T)
Aus 357	773(T)
Aus 367	730, 764(T), 765(T), 766(T)
Aus 487	773(T), 774(T)
Aus 490	733, 764(T), 765(T), 766(T)
Aus 715	768(T)
Aus 742	735
Aus 781	771(T)
Aus 787	774(T)
Aus 789	774(T)
Aus 802	736
Aus 814	731, 760(T)
Aus 815	729, 761(T), 767(T)
Aus 816	729, 743(T)
Aus 817	723, 741(T), 743(T), 754(T), 755(T), 757(T), 767(T)
Aus 819	723, 740(T)
Aus 820	723, 764(T)
Aus 822	730, 764(T), 766(T)
Aus 823	766(T)
Aus 826	728
Aus 827	737(T), 762(T)
Aus 4635	731
Aus 4643	731
Aus 4644	773(T)
Aus 4721	769(T)
Aus 4722	769(T)
PNG 397	734
PNG 554	734

INT Chart	Notices
INT 635	731
INT 643	731
INT 644	773(T)
INT 721	769(T)
INT 722	769(T)

723 AUSTRALIA - Products - New Charts, New Editions, Withdrawn Charts

Australian Hydrographic Office , UKHO

New Charts

<i>Chart</i>	<i>Title and Geographical limits</i>	<i>Scale</i>	<i>Publication Date</i>	<i>Remarks</i>
NIL				

New Electronic Navigation Chart (Aus ENC)

<i>Cell Name</i>	<i>Title</i>	<i>Publication Date</i>	<i>Remarks</i>
PG405144	Papua New Guinea - North Coast - Bogia Harbour to Cape Purpur	12 August 2021	AU405144 has been withdrawn.
PG404144	Papua New Guinea - North Coast - Aris Island to Vokeo Island	12 August 2021	AU404144 has been withdrawn.
PG404143	Papua New Guinea - North Coast - Nightingale Bay to Tarawai Island	12 August 2021	AU404143 has been withdrawn.
PG406147	Papua New Guinea - North Coast - Umboi Island to Long Island	12 August 2021	AU406147 has been withdrawn.
PG404151	Papua New Guinea - New Ireland - New Ireland West Coast	19 August 2021	AU404151 has been withdrawn.
PG411152	Papua New Guinea - Louisiade Archipelago - Renard Island to East Island	19 August 2021	AU411152 has been withdrawn.
PG411151	Papua New Guinea - North East Coast - Panabwal Group to Goschen Strait	19 August 2021	AU411151 has been withdrawn.

New Editions and Withdrawn Charts

<i>Chart</i>	<i>Title</i>	<i>Scale</i>	<i>Publication Date</i>	<i>Remarks</i>
Aus 119 (Edition 4)	Australia - South Coast - Western Approaches to Esperance	1:75 000	20 August 2021	New edition with general updating throughout; including latest bathymetric data. Chart Aus 119 Edition 3 dated 30 October 2020 is now superseded and must be withdrawn from use.
Aus 817 (Edition 3)	Australia - East Coast - Queensland - Great Sandy Strait and Hervey Bay	1:150 000	20 August 2021	New edition with general updating throughout. Chart Aus 817 Edition 2 dated 5 June 2015 is now superseded and must be withdrawn from use.
Aus 819 (Edition 5)	Australia - East Coast - Queensland - Bustard Head to North Reef	1:150 000	20 August 2021	New edition with general updating throughout; including latest bathymetric data. Chart Aus 819 Edition 4 dated 22 April 2016 is now superseded and must be withdrawn from use.
Aus 820 (Edition 4)	Australia - East Coast - Queensland - North Reef to Port Clinton	1:150 000	20 August 2021	New edition with general updating throughout; including latest bathymetric data. Chart Aus 820 Edition 3 dated 1 August 2014 is now superseded and must be withdrawn from use.

723

AUSTRALIA - Products - New Charts, New Editions, Withdrawn Charts**Charts withdrawn without replacement**

<i>Chart</i>	<i>Title</i>	<i>Scale</i>	<i>Publication Date</i>
Aus 240 Edition 1	Australia - East Coast - Queensland - Great Sandy Strait (Southern Sheet)	1:50 000	10 April 2009
Aus 241 Edition 1	Australia - East Coast - Queensland - Great Sandy Strait (Northern Sheet)	1:50 000	10 April 2009
Aus 247 Edition 1	Australia - East Coast - Queensland - Keppel Bay Plan: Rosslyn Bay	1:80 000 1:10 000	9 September 2016

Admiralty publication

<i>NP No</i>	<i>Title</i>	<i>Date</i>	<i>Remarks</i>
NP203-2022	Admiralty Tide Tables Volume 3 Indian Ocean (including Tidal Stream Tables) 2022 Edition.	15/07/2021	New Edition 2022.
NP204-2022	Admiralty Tide Tables Volume 4 South Pacific Ocean (including Tidal Stream Tables) 2022 Edition.	12/08/2021	New Edition 2022.
NP285	Admiralty List of Radio Signals Global Maritime Distress and Safety System (GMDSS) Volume 5, 2nd Edition (2021).	15/07/2021	The 1st Edition (2020) of NP285 is cancelled.

Chart permanently withdrawn

Charts listed above as withdrawn no longer meet chart carriage requirements and should be marked as "superseded" and replaced with the new chart/ new edition listed prior to passage through the area covered by the new chart.

When placing orders with a chart agent between notice of forthcoming edition and its publication, mariners should advise whether their order pertains to the current edition or the new edition.

For further details refer to the AHO website at www.hydro.gov.au for new edition and new chart stock arrival information.

724

AUSTRALIA - Products - New Charts and New Editions to be published shortly

Australian Hydrographic Office

New Charts to be published shortly

<i>Chart</i>	<i>Title</i>	<i>Scale</i>	<i>Remarks</i>
NIL			

New Editions to be published shortly

<i>Chart</i>	<i>Title</i>	<i>Scale</i>	<i>Remarks</i>
Aus 50	Australia - North West Coast - Western Australia - Approaches to Broome	1:50 000	New edition with general updating throughout; including latest bathymetric data.

Charts to be withdrawn without replacement 3 September 2021

<i>Chart</i>	<i>Title</i>	<i>Scale</i>	<i>Publication Date</i>
Aus 269 Edition 1	Australia - East Coast - Queensland - Plans of Airlie Beach and Shute Harbour Plans: Airlie Beach Shute Harbour	 1:15 000 1:15 000	8 April 2016

725 AUSTRALIA - Product - Amendment to Australian National Tide Tables 2021
Australian Hydrographic Office

ANTT 2021

Page 339 <i>Amend</i>	REVELEY ISLAND To Chart Datum 0.1 to 0.0
Page 339 <i>Amend</i>	PENDER POINT To Chart Datum 0.5 to 0.0
Page 352 <i>Amend</i>	ABBOT POINT Correction to Chart Datum AUS 255 NE 06 AUG 2021 0.0
Page 353 <i>Delete</i>	CAPE DOMETT Correction to Chart Datum AUS 32 NE 19 APR 2019 0.0
Page 353 <i>Insert</i>	CAPE DOMETT Correction to Chart Datum AUS 318 NE 06 AUG 2021 0.0
Page 361 <i>Delete</i>	WYNDHAM Correction to Chart Datum AUS 32 NE 19 APR 2019 0.0
Page 361 <i>Insert</i>	WYNDHAM Correction to Chart Datum AUS 318 NE 06 AUG 2021 0.0

726 AUSTRALIA - Product - Amendment to Mariner's Handbook for Australian Waters AHP20
Australian Hydrographic Office

Chapter 11 - New South Wales Ports - page 227 - Port Kembla - Port Table

Replace table with accompanying block

727 AUSTRALIA - NEW SOUTH WALES - Newcastle - Little Redhead Point - Depth
UKHO

Aus 207 [NE 28/5/2021]
Replace depth, 19₁m, with depth, 10₇m 32° 58'.24 S 151° 45'.15 E

728 AUSTRALIA - QUEENSLAND - Burdekin River - Scientific instrument
Australian Institute of Marine Science

Aus 826 [590/2020]
Insert special spar light buoy, Q(4)Y.19s, with topmark 19° 35'.25 S 147° 34'.95 E

729 AUSTRALIA - QUEENSLAND - Great Sandy Strait - Chart withdrawn; chart note; chart limits; ZOC diagram

Australian Hydrographic Office

Note: position of existing chart notes may vary on certain charts.

Aus 815 [514/2021]

Insert	accompanying block	25° 50'.0 S	153° 09'.0 E
	accompanying chart note, ELECTRONIC NAVIGATIONAL CHART (ENC)	26° 04'.0 S	153° 53'.0 E
	accompanying ZOC diagram	26° 08'.0 S	153° 58'.0 E

Aus 816 [586/2021]

Insert	accompanying ZOC diagram	25° 19'.0 S	153° 07'.0 E
	magenta legend, <i>ENC</i> (see <i>Note</i>)	25° 40'.2 S	153° 09'.8 E
Replace	chart note, OMISSIONS FROM CHART with accompanying chart note, ELECTRONIC NAVIGATIONAL CHART (ENC)	25° 40'.7 S	153° 55'.0 E
Delete	magenta limits with legend, Aus 241, centred on	25° 15'.0 S	153° 03'.6 E
	magenta limits with legend, Aus 240, centred on	25° 37'.0 S	153° 08'.0 E

730 AUSTRALIA - QUEENSLAND - Otterbourne Island to Holt Island - DepthsHMAS *Leeuwin***Aus 260 [236/2021]**

Insert	contour, between	22° 01'.87 S	150° 17'.81 E
		22° 02'.08 S	150° 17'.99 E
		22° 02'.08 S	150° 18'.23 E
		22° 01'.88 S	150° 18'.37 E
	depth, 18 ₉ m, enclosed by contour	22° 00'.66 S	150° 13'.64 E
	depth, 17 ₉ m, enclosed by contour	22° 01'.35 S	150° 14'.58 E
	depth, 15 ₇ m, and extend contour W to enclose	22° 01'.39 S	150° 16'.25 E
	depth, 12 ₇ m, enclosed by contour	22° 01'.39 S	150° 16'.84 E
	depth, 2 ₇ m	22° 02'.04 S	150° 17'.99 E
	depth, 19 ₆ m, enclosed by contour	22° 03'.21 S	150° 18'.58 E
	depth, 13 ₅ m, enclosed by contour	22° 03'.64 S	150° 20'.63 E
	depth, 16 ₇ m, enclosed by contour	22° 11'.59 S	150° 23'.91 E

Delete	contour, between	22° 01'.9 S	150° 17'.8 E
		22° 01'.9 S	150° 18'.0 E
	contour, between	22° 02'.0 S	150° 18'.1 E
		22° 01'.9 S	150° 18'.4 E
	depth, 17m	22° 01'.3 S	150° 16'.8 E
	depth, 6 ₃ m	22° 02'.0 S	150° 18'.1 E

Aus 367 [901/2020]

Insert	contour, between	22° 01'.25 S	150° 16'.44 E
		22° 01'.37 S	150° 16'.20 E
		22° 01'.96 S	150° 16'.51 E
	depth, 18 ₉ m, enclosed by contour	22° 00'.66 S	150° 13'.64 E
	depth, 17 ₉ m, enclosed by contour	22° 01'.35 S	150° 14'.58 E
	depth, 12 ₇ m, enclosed by contour	22° 01'.39 S	150° 16'.84 E
	depth, 19 ₆ m, enclosed by contour	22° 03'.21 S	150° 18'.58 E
	depth, 13 ₅ m, enclosed by contour	22° 03'.64 S	150° 20'.63 E
	depth, 16 ₇ m, and extend contour NW to enclose	22° 11'.59 S	150° 23'.91 E

Delete	contour, between	22° 01'.2 S	150° 16'.4 E
		22° 02'.0 S	150° 16'.5 E
	depth, 17m	22° 01'.3 S	150° 16'.8 E
	depth, 19 ₈ m	22° 12'.0 S	150° 24'.4 E

Aus 822 [695/2020]

Insert	contour, between	22° 01'.94 S	150° 17'.88 E
		22° 02'.08 S	150° 17'.99 E
		22° 02'.08 S	150° 18'.24 E
		22° 01'.99 S	150° 18'.32 E
	depth, 18 ₉ m, enclosed by contour	22° 00'.66 S	150° 13'.64 E
	depth, 17 ₉ m, enclosed by contour	22° 01'.35 S	150° 14'.58 E
	depth, 15 ₇ m, and extend contour W to enclose	22° 01'.39 S	150° 16'.25 E
	depth, 12 ₇ m, enclosed by contour	22° 01'.39 S	150° 16'.84 E
	depth, 19 ₆ m, enclosed by contour	22° 03'.21 S	150° 18'.58 E
	depth, 13 ₅ m, enclosed by contour	22° 03'.64 S	150° 20'.63 E
	depth, 16 ₇ m, enclosed by contour	22° 11'.59 S	150° 23'.91 E

Delete	contour, between	22° 01'.9 S	150° 17'.9 E
		22° 02'.0 S	150° 18'.3 E
	depth, 17m	22° 01'.3 S	150° 16'.8 E
	depth, 23 ₅ m	22° 01'.3 S	150° 16'.0 E

731 AUSTRALIA - QUEENSLAND - Point Lookout - Scientific instruments eastwards
CSIRO

Aus 814 [272/2021]

Insert	depth, 40m, enclosed by danger circle, with legend ODAS	27° 18'.94 S	154° 00'.16 E
Replace	depth, 20m, with depth, 40m	27° 19'.6 S	153° 54'.0 E
Delete	depth, 20m, and enclosing danger circle, with legend ODAS	27° 18'.4 S	153° 59'.5 E

Aus 4635 (INT 635) [514/2021]

Replace	depth, 20m, with depth, 40m	27° 06'.2 S	155° 18'.0 E
	depth, 20m, with depth, 40m	27° 12'.5 S	154° 38'.8 E
	depth, 20m, with depth, 40m	27° 15'.5 S	154° 18'.7 E
	depth, 20m, with depth, 40m	27° 17'.1 S	154° 08'.1 E
	depth, 20m, with depth, 40m	27° 19'.6 S	153° 54'.0 E

Aus 4643 (INT 643) [303/2020]

Replace	depth, 20m, with depth, 40m	27° 06'.2 S	155° 18'.0 E
	depth, 20m, with depth, 40m	27° 12'.5 S	154° 38'.8 E
	depth, 20m, with depth, 40m	27° 15'.5 S	154° 18'.7 E
	depth, 20m, with depth, 40m	27° 17'.1 S	154° 08'.1 E
	depth, 20m, with depth, 40m	27° 19'.6 S	153° 54'.0 E

732 AUSTRALIA - QUEENSLAND - Pumicestone Channel - Nav aids
Maritime Safety Queensland Noitce 299/2021

Aus 235 [476/2020]

Insert	legend, <i>Channels marked by buoys and beacons</i> , centred on	26° 49'.58 S	153° 06'.95 E
Delete	light buoy	26° 48'.4 S	153° 07'.8 E
	light buoy	26° 48'.6 S	153° 07'.5 E
	light buoy	26° 48'.8 S	153° 07'.4 E
	light beacon	26° 49'.0 S	153° 07'.5 E
	light beacon	26° 49'.3 S	153° 07'.9 E
	light beacon	26° 49'.6 S	153° 07'.6 E
	light beacon	26° 49'.9 S	153° 07'.4 E
	light beacon	26° 50'.0 S	153° 07'.2 E
	light beacon	26° 50'.5 S	153° 06'.8 E
	light beacon	26° 50'.6 S	153° 07'.0 E

733 AUSTRALIA - CORAL SEA - Saumarez Reefs - Depth
UKHO

Aus 490 [310/2021]

Replace	depth, 14 ₈ m, with depth, 10 ₉ m	21° 45'.4 S	153° 39'.3 E
---------	---	-------------	--------------

734 PAPUA NEW GUINEA - Wide Bay - Depths
Australian Hydrographic Office

PNG 397 [NC 5/2/2021]

Insert	accompanying block	5° 03'.0 S	152° 03'.0 E
--------	--------------------	------------	--------------

PNG 554 [NC 20/3/2020]

Insert	accompanying block	5° 03'.2 S	152° 07'.0 E
--------	--------------------	------------	--------------

735 AUSTRALIA - WESTERN AUSTRALIA - Varanus Island - Port limit
Pilbara Ports Authority Notice V1/2021

Aus 65 [16/2020]

Insert	restricted area limit, between	20° 40'.99 S	115° 37'.01 E
		20° 40'.99 S	115° 40'.65 E
		20° 37'.00 S	115° 40'.65 E
		20° 39'.06 S	115° 40'.59 E
		20° 40'.90 S	115° 39'.19 E
Delete	restricted area limit, between	20° 41'.0 S	115° 37'.0 E
		20° 37'.0 S	115° 40'.0 E
		20° 38'.8 S	115° 39'.8 E
		20° 40'.5 S	115° 38'.3 E

Aus 327 [690/2021]

Insert	restricted area limit with legend, <i>Varanus Island Port Limit</i> , between	20° 37'.00 S	115° 33'.08 E
		20° 37'.00 S	115° 40'.65 E
		20° 40'.99 S	115° 40'.65 E
		20° 40'.99 S	115° 37'.01 E
Delete	restricted area limit with legend, <i>Varanus Island Port Limit</i> , between	20° 37'.0 S	115° 33'.0 E
		20° 37'.5 S	115° 40'.0 E
		20° 41'.0 S	115° 37'.0 E

Aus 742 [690/2021]

Insert	restricted area limit with legend, <i>Varanus Island Port Limit</i> , between	20° 37'.00 S	115° 33'.08 E
		20° 37'.00 S	115° 40'.65 E
		20° 40'.99 S	115° 40'.65 E
		20° 40'.99 S	115° 37'.01 E
Delete	restricted area limit with legend, <i>Varanus Island Port Limit</i> , between	20° 37'.0 S	115° 33'.0 E
		20° 37'.5 S	115° 40'.0 E
		20° 41'.0 S	115° 37'.0 E

736 AUSTRALIA - VICTORIA - Corner Inlet - Light buoy
Gippsland Ports Notice 222/2021, UKHO

Aus 802 [589/2021]

Amend	light buoy to <i>Fl.R. 4s</i>	38° 48'.1 S	146° 30'.0 E
-------	-------------------------------	-------------	--------------

737(T)/2021 AUSTRALIA - QUEENSLAND - Cleveland Bay - Scientific instruments

Maritime Safety Queensland Notice 300(T)/2021

Special light buoys, *Fl. Y. 2.5s*, exist in the following positions:

19° 02'.34 S 146° 36'.93 E
 19° 06'.45 S 146° 32'.48 E
 19° 07'.34 S 146° 52'.92 E
 19° 09'.32 S 146° 52'.10 E
 19° 11'.20 S 146° 50'.34 E
 19° 11'.37 S 146° 49'.09 E
 19° 11'.81 S 146° 49'.07 E
 19° 12'.19 S 146° 59'.41 E
 19° 12'.79 S 146° 47'.55 E.
 19° 13'.58 S 146° 56'.98 E
 19° 14'.05 S 146° 49'.50 E
 19° 14'.80 S 146° 48'.90 E.

Chart temporarily affected - Aus 256 - Aus 827**738(T)/2021 AUSTRALIA - QUEENSLAND - Fitzroy River - Middle Channel - Scientific instrument**

Maritime Safety Queensland Notice 31/2021

A special light buoy, *Q. Y.*, exists in position 23° 28'.23 S 150° 56'.37 E.**Chart temporarily affected - Aus 265****739(T)/2021 AUSTRALIA - QUEENSLAND - Fitzroy River - Middle Channel - Scientific instrument***Former Notice - 111(T)/2021 is cancelled*

Maritime Safety Queensland Notice 31/2021

Cancel this notice on receipt.

Chart formerly affected - Aus 247 - Aus 265**740(T)/2021 AUSTRALIA - QUEENSLAND - Fitzroy River - Light buoys restored***Former Notice - 248(T)/2020 is cancelled*

Maritime Safety Queensland Notice 77/2020

Cancel this notice on receipt.

Chart formerly affected - Aus 247 - Aus 819**741(T)/2021 AUSTRALIA - QUEENSLAND - Fraser Island - Elbow Point - Shoaling**

Navionics

Depths of less than 1m have been reported in an area bounded by the following positions:

25° 44'.40 S 152° 59'.29 E
 25° 44'.71 S 152° 59'.37 E
 25° 44'.89 S 153° 00'.30 E
 25° 44'.66 S 153° 00'.38 E
 25° 44'.40 S 152° 59'.77 E.

Mariners are advised to navigate with caution in the area.

Charts will be updated in due course.

Chart temporarily affected - Aus 817

742(T)/2021 AUSTRALIA - QUEENSLAND - Fraser Island - Elbow Point - Shoaling

Former Notice - 56(T)/2021 is cancelled
Navionics

Cancel this notice on receipt.

Chart formerly affected - Aus 240

743(T)/2021 AUSTRALIA - QUEENSLAND - Fraser Island - Rooney Point - Light buoy off station

Maritime Safety Queensland Notice 289(T)/2021

The special light buoy, *Fl. Y. 3s FAD* (24° 48'.76 S 153° 06'.15 E), is off station and is currently in position 24° 48'.30 S 153° 05'.64 E.

Chart temporarily affected - Aus 816 - Aus 817

744(T)/2021 AUSTRALIA - QUEENSLAND - Gladstone - Scientific instruments

Maritime Safety Queensland Notice 390(T)/2020

Special cylindrical light buoys, *Fl. Y. 6s*, exist in the following positions:

23° 45'.53 S 151° 09'.49 E

23° 45'.92 S 151° 10'.87 E

23° 44'.71 S 151° 09'.62 E.

Chart temporarily affected - Aus 245

745(T)/2021 AUSTRALIA - QUEENSLAND - Gladstone - Scientific instruments

Former Notice - 68(T)/2021 is cancelled
Maritime Safety Queensland Notice 390(T)/2020

Cancel this notice on receipt.

Chart formerly affected - Aus 245 - Aus 247

746(T)/2021 AUSTRALIA - QUEENSLAND - Gladstone - Boyne Island to Worthington Island - Scientific instruments recovered

Former Notice - 66(T)/2021 is cancelled
Maritime Safety Queensland Notice 291(T)/2020

Cancel this notice on receipt.

Chart formerly affected - Aus 245 - Aus 246 - Aus 247

747(T)/2021 AUSTRALIA - QUEENSLAND - Gladstone - Fishermans Landing Wharves to Boyne Wharf - Scientific instruments recovered

Former Notice - 560(T)/2021 is cancelled
Maritime Safety Queensland

Cancel this notice on receipt.

Chart formerly affected - Aus 245 - Aus 246

748(T)/2021 AUSTRALIA - QUEENSLAND - Great Sandy Strait - Tin Can Bay - Chart withdrawn

Former Notice - 112(T)/2021 is cancelled
Maritime Safety Queensland Notice 23(T)/2021

Cancel this notice on receipt.

Chart formerly affected - Aus 240

749(T)/2021 AUSTRALIA - QUEENSLAND - Great Sandy Strait - Tin Can Inlet - Chart withdrawn*Former Notice* - 204(T)/2020 is cancelled

Maritime Safety Queensland Notice 75(T)/2020

Cancel this notice on receipt.

Chart formerly affected - Aus 240**750(T)/2021 AUSTRALIA - QUEENSLAND - Great Sandy Strait - Garden Island - Chart withdrawn***Former Notice* - 33(T)/2020 is cancelled

Maritime Safety Queensland Notice 531(T)/2019

Cancel this notice on receipt.

Chart formerly affected - Aus 240**751(T)/2021 AUSTRALIA - QUEENSLAND - Great Sandy Strait - Tin Can Bay - Chart withdrawn***Former Notice* - 1260(T)/2019 is cancelled

Maritime Safety Queensland Notice 492(T)/2019

Cancel this notice on receipt.

Chart formerly affected - Aus 240**752(T)/2021 AUSTRALIA - QUEENSLAND - Great Sandy Strait - Mary River - Beaver Rock - Chart withdrawn***Former Notice* - 376(T)/2021 is cancelled

Maritime Safety Queensland Notice 130(T)/2021

Cancel this notice on receipt.

Chart formerly affected - Aus 241**753(T)/2021 AUSTRALIA - QUEENSLAND - Great Sandy Strait - Mary River - Heath Reach - Chart withdrawn***Former Notice* - 159(T)/2020 is cancelled

Maritime Safety Queensland Notice 55(T)/2020

Cancel this notice on receipt.

Chart formerly affected - Aus 241**754(T)/2021 AUSTRALIA - QUEENSLAND - Great Sandy Strait - Light buoys**

Maritime Safety Queensland Notice 61(T)/2016, 146/2017, 145(T)/2021

Light buoys exist as follows:

<i>Number</i>	<i>Position</i>	<i>Characteristics</i>
UC1	25° 09'.10 S 152° 50'.54 E	Fl.G.2.5s
S3	25° 12'.70 S 152° 54'.75 E	Fl.G.2.5s
NG1	25° 20'.20 S 153° 01'.40 E	Fl.G.2.5s

Chart temporarily affected - Aus 817**755(T)/2021 AUSTRALIA - QUEENSLAND - Great Sandy Strait - Light buoys***Former Notice* - 375(T)/2021 is cancelled

Maritime Safety Queensland Notice 61(T)/2016, 146/2017, 145(T)/2021

Cancel this notice on receipt.

Chart formerly affected - Aus 241 - Aus 817

756(T)/2021 AUSTRALIA - QUEENSLAND - Great Sandy Strait - Tin Can Bay - Wreck salvaged; light buoys removed
Former Notice - 1141(T)/2018 is cancelled
 Maritime Safety Queensland

Cancel this notice on receipt.

Chart formerly affected - Aus 240

757(T)/2021 AUSTRALIA - QUEENSLAND - Great Sandy Strait - Shoaling charted
Former Notice - 971(P)/2016 is cancelled
 Maritime Safety Queensland

Cancel this notice on receipt.

Chart formerly affected - Aus 241 - Aus 817

758(T)/2021 AUSTRALIA - QUEENSLAND - Keppel Bay - Light buoy unlit
 Maritime Safety Queensland Notice 417(T)/2020

The port lateral light buoy, *Fl.R.2s No2* (23° 26'.09 S 150° 58'.88 E), is unlit.

Chart temporarily affected - Aus 265

759(T)/2021 AUSTRALIA - QUEENSLAND - Keppel Bay - Light buoy unlit
Former Notice - 1006(T)/2020 is cancelled
 Maritime Safety Queensland Notice 417(T)/2020

Cancel this notice on receipt.

Chart formerly affected - Aus 247 - Aus 265

760(T)/2021 AUSTRALIA - QUEENSLAND - North Stradbroke Island - Light buoy off station
 Department of Agriculture and Fisheries QLD

The special light buoy, *Fl.Y.3s FAD* (27° 41'.28 S 153° 36'.83 E), is off station and is currently in position 27° 40'.46 S 153° 36'.17 E.

Chart temporarily affected - Aus 814

761(T)/2021 AUSTRALIA - QUEENSLAND - Point Cartwright - Obstruction; light buoy eastwards
 Maritime Safety Queensland Notice 312(T)/2021

An obstruction marked by a special buoy exists in position 26° 42'.19 S 153° 35'.29 E.

Chart temporarily affected - Aus 235 - Aus 815

762(T)/2021 AUSTRALIA - QUEENSLAND - Rattlesnake Island - Live firing
 Maritime Safety Queensland Notice 304(T)/2021

Live firing activities will be conducted within a 5M radius of position 19° 02'.27 S 146° 36'.43 E on 30 August 2021.

Mariners are advised to navigate with caution and keep well clear of the area.

Chart temporarily affected - Aus 256 - Aus 827

763(T)/2021 AUSTRALIA - QUEENSLAND - Rosslyn Bay - Shoaling removed*Former Notice* - 280(T)/2019 is cancelled

Maritime Safety Queensland Notice 106(T)/2019

Cancel this notice on receipt.

Chart formerly affected - Aus 247**764(T)/2021 AUSTRALIA - QUEENSLAND - Shoalwater Bay - Live firing completed***Former Notice* - 702(T)/2021 is cancelled

Maritime Safety Queensland Notice 291(T)/2021

Cancel this notice on receipt.

Chart formerly affected - Aus 248 - Aus 260 - Aus 367 - Aus 490 - Aus 820 - Aus 822**765(T)/2021 AUSTRALIA - QUEENSLAND - Shoalwater Bay - Live firing**

Maritime Safety Queensland Notice 311(T)/2021

Live firing will be conducted in the marine component of the Shoalwater Bay training area during the period 20 to 28 August 2021.

A marine danger area extends to all internal waters bounded by the following positions:

22° 35'.87 S 150° 28'.80 E

22° 40'.00 S 150° 38'.00 E

22° 33'.23 S 150° 35'.28 E

22° 33'.77 S 150° 33'.27 E

22° 34'.16 S 150° 30'.72 E.

All waters, creeks, beaches and other areas within the declared marine danger area are not available for access.

There will be a safe anchorage available at Freshwater, Port Clinton, West Water Port Clinton, South Arm Port Clinton, Pearl Bay, Island Head Creek and Supply Bay Townshend Island.

Mariners are advised to keep clear of this area throughout the above times.

Chart temporarily affected - Aus 367 - Aus 490**766(T)/2021 AUSTRALIA - QUEENSLAND - Townshend Island - Live firing northwards completed***Former Notice* - 603(T)/2021 is cancelled

Department of Defence

Cancel this notice on receipt.

Chart formerly affected - Aus 260 - Aus 367 - Aus 490 - Aus 822 - Aus 823**767(T)/2021 AUSTRALIA - QUEENSLAND - Wide Bay - Shoaling charted***Former Notice* - 980(P)/2018 is cancelled

Maritime Safety Queensland Notice 164/2017

Cancel this notice on receipt.

Chart formerly affected - Aus 240 - Aus 815 - Aus 817**768(T)/2021 AUSTRALIA - NORTHERN TERRITORY - Gove Harbour - Light buoy off station**

Rio Tinto

The safe water light buoy, *Iso.10s Fairway* (12° 10'.72 S 136° 38'.64 E), is off station.**Chart temporarily affected - Aus 15 - Aus 715**

769(T)/2021 AUSTRALIA - TIMOR SEA - Sahul Banks - Jabiru Shoals - Seismic survey completed

Former Notice - 166(T)/2020 is cancelled
SapuraOMV Upstream (WA)

Cancel this notice on receipt.

Chart formerly affected - Aus 314 - Aus 321 - Aus 4721 (INT 721) - Aus 4722 (INT 722)

770(T)/2021 AUSTRALIA - WESTERN AUSTRALIA - Port Hedland - Anchorages updated

Former Notice - 320(P)/2020 is cancelled
Australian Hydrographic Office

Cancel this notice on receipt.

Chart formerly affected - Aus 53 - Aus 326

771(T)/2021 AUSTRALIA - SOUTH AUSTRALIA - Gulf St Vincent - Investigator Strait to Adelaide - Scientific instruments

Department for Infrastructure and Transport SA Notice 25(T)/2021

Special light buoys, *Fl. Y. 2s*, exist in the following positions:

34° 51'.30 S 138° 21'.00 E

35° 01'.50 S 138° 27'.00 E.

An unlit special buoy exists in position 35° 34'.20 S 136° 55'.53 E.

Chart temporarily affected - Aus 130 - Aus 781

772(T)/2021 AUSTRALIA - VICTORIA - Port Phillip - Point Cole - Light beacon relit

Former Notice - 615(T)/2021 is cancelled
Parks Victoria Notice 233/2021

Cancel this notice on receipt.

Chart formerly affected - Aus 155

773(T)/2021 AUSTRALIA - BASS STRAIT - Racon non operational

Australian Maritime Safety Authority Auscoast Warning 171/2021

The racon at the *Flounder A* platform (38° 18'.65 S 148° 26'.36 E) is non operational.

Chart temporarily affected - Aus 357 - Aus 487 - Aus 4644 (INT 644)

774(T)/2021 AUSTRALIA - TASMANIA - King Island - Survey operations

ConocoPhillips Australia

Vessel *Geo Coral*, with a 6000m towed array, is conducting seismic survey operations in an area bounded by the following positions:

40° 28'.53 S 143° 15'.90 E

40° 28'.12 S 143° 35'.35 E

39° 21'.10 S 143° 32'.84 E

39° 21'.16 S 143° 29'.99 E

39° 05'.55 S 143° 29'.44 E

39° 05'.88 S 143° 13'.22 E.

Mariners are advised to navigate with caution in the area. 3M clearance requested.

Chart temporarily affected - Aus 349 - Aus 487 - Aus 787 - Aus 789

II

HYDROGRAPHIC REPORTS

NIL

To accompany Australian Notice to Mariners 729/2021

ELECTRONIC NAVIGATIONAL CHART (ENC)

Larger scale ENC content exists in this area. When using electronic navigation systems, certain vessels (e.g. restricted by depth or size) may benefit from the additional level of detail shown in the largest scale ENC product available.

Note for chart Aus 815

To accompany Australian Notice to Mariners 729/2021

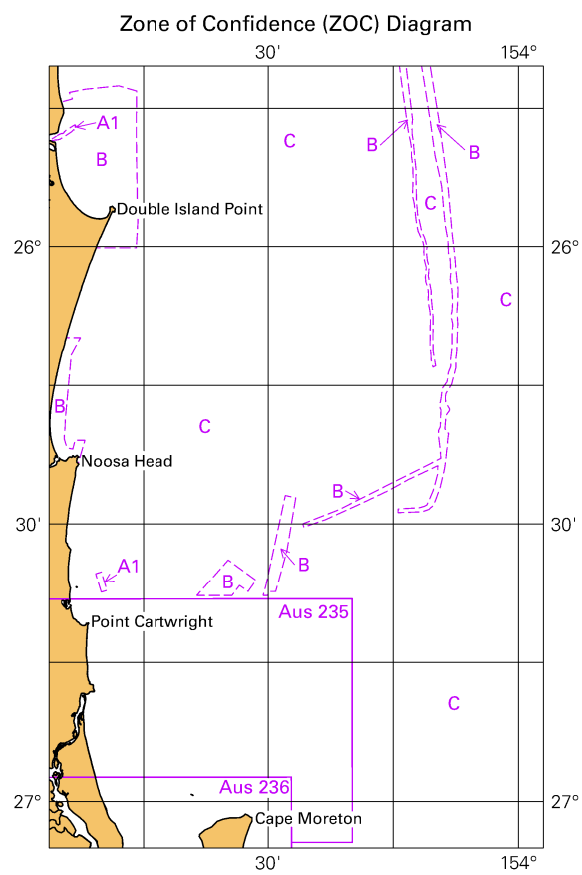
ELECTRONIC NAVIGATIONAL CHART (ENC)

Larger scale ENC content exists in this area. When using electronic navigation systems, certain vessels (e.g. restricted by depth or size) may benefit from the additional level of detail shown in the largest scale ENC product available.

Note for chart Aus 816

Port Kembla, NSW (34° 28'S, 150° 54'E)	
UN/LOCODE: AU PKL	
Paper charts:	Aus 195, 808
AusENC cells:	AU5PKL01, AU435150
Security Regulated Port:	Yes
Port Authority	Port Authority of NSW
Website:	www.portauthoritynsw.com.au
Email:	portkemblavts@portauthoritynsw.com.au
Telephone:	+61 2 4575 0100
Vessel Traffic Information Centre	
Call:	"Port Kembla VTS"
Telephone:	+61 2 4275 0197
Pilotage:	Compulsory
Pilot Boarding Grounds:	(Inner) 34° 25.15'S, 150° 56.85'E (Outer) 34° 24.18'S, 150° 57.62'E
Communication:	"Port Kembla VTS"
Call up, emergencies:	VHF Channel 11, 16
Port Operations:	VHF Channel 08
Notice of ETA:	48 hours notification required - booking must be confirmed 24 hours in advance
For more information:	https://www.portauthoritynsw.com.au/port-kembla/

To accompany Australian Notice to Mariners 729/2021

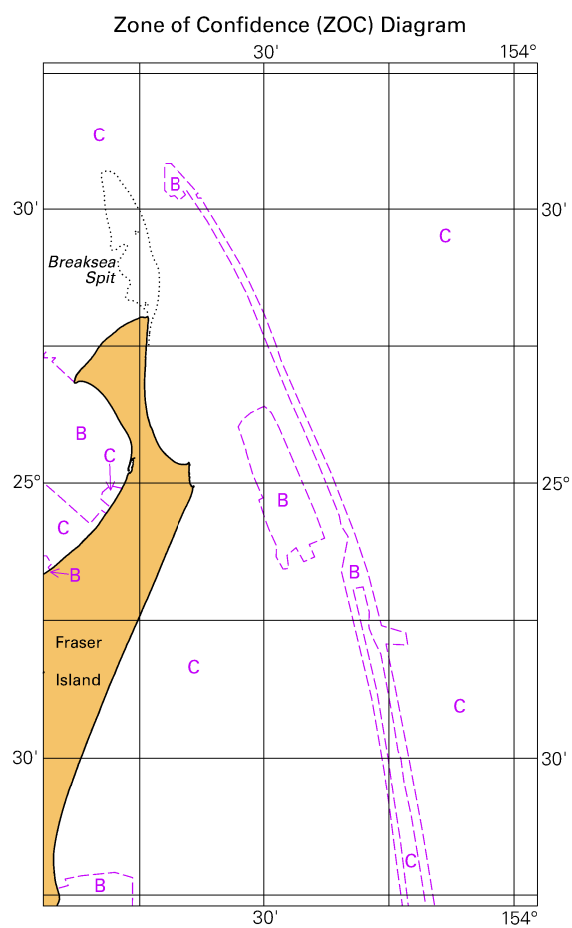


© Commonwealth of Australia 2021

Block for chart Aus 815

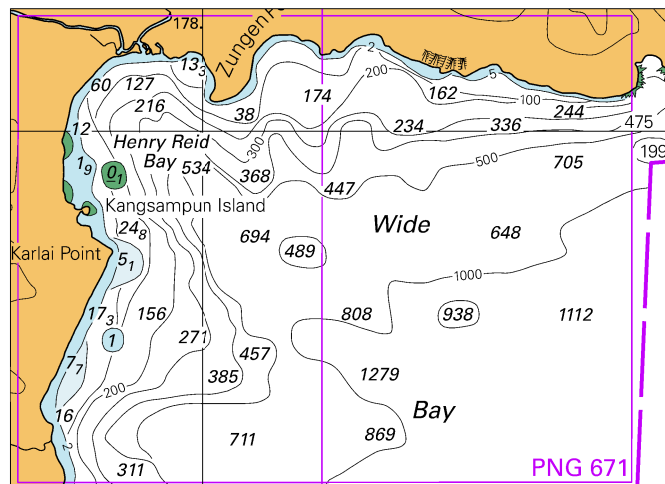
(65.4 x 103.4mm)

To accompany Australian Notice to Mariners 729/2021



© Commonwealth of Australia 2021
Block for chart Aus 816 (65.4 x 111.6mm)

To accompany Australian Notice to Mariners 734/2021

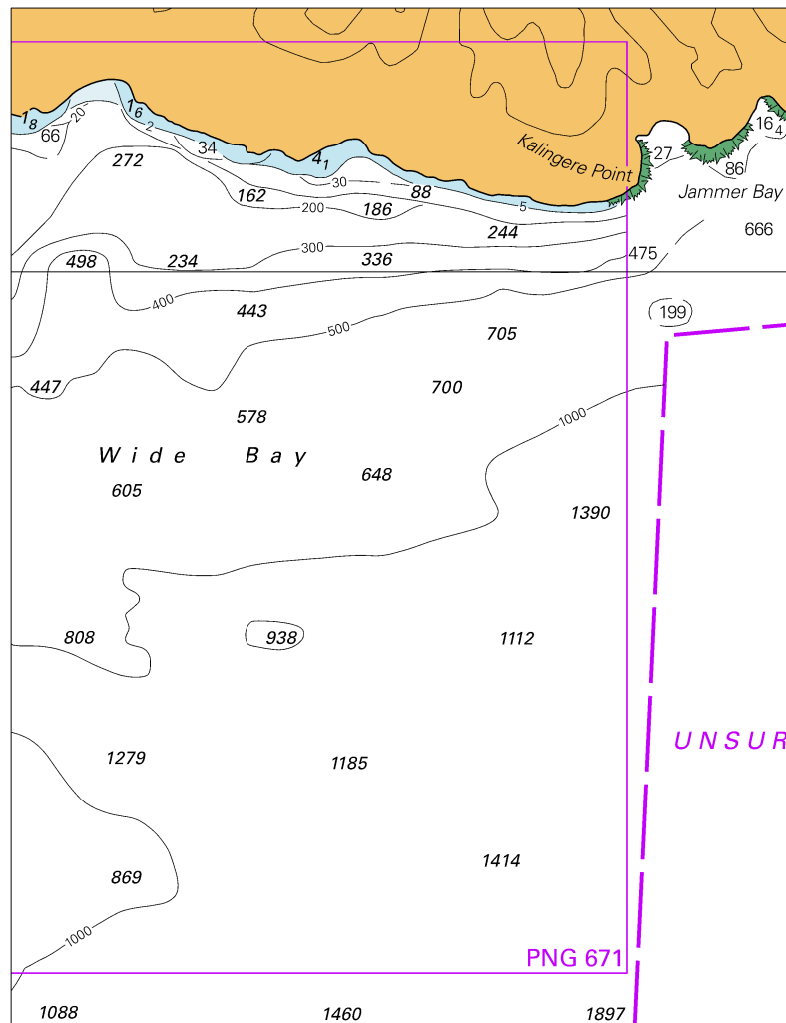


© Commonwealth of Australia 2021

Block for chart PNG 397

(87.7 x 62.9mm)

To accompany Australian Notice to Mariners 734/2021



© Commonwealth of Australia 2021

Block for chart PNG 554

(103.3 x 134.6mm)