



6 August 2021

Edition 16

AUSTRALIAN NOTICES TO MARINERS

Notices 681 - 722

Published fortnightly by the Australian Hydrographic Office



Australian Notices to Mariners are the authority for correcting charts and publications published by the Australian Hydrographic Office covering Australia, Papua New Guinea, Solomon Islands, Australian Antarctic Territory and Timor-Leste.

Commodore S.T. DUNNE RAN
Hydrographer of Australia

SECTIONS.

- I. **Australian Notices to Mariners, including blocks and notes.**
- II. **Hydrographic Reports.**

SUPPLEMENTS.

- I. **Tracings**
- II. **Cumulative List of Australian Notices to Mariners.**
- III. **Cumulative List of Temporary and Preliminary Australian Notices to Mariners.**
- IV. **Temporary and Preliminary Notices in force.**

© Commonwealth of Australia 2021

This work is copyright. Apart from any use permitted under the Copyright Act 1968, no part may be reproduced by any process, adapted, communicated or commercially exploited without prior written permission from The Commonwealth represented by the Australian Hydrographic Office.

IMPORTANT NOTICE

This edition of Notices to Mariners includes all significant information affecting AHO products which the AHO has become aware of since the last edition. All reasonable efforts have been made to ensure the accuracy and completeness of the information, including third party information, on which these updates are based. The AHO regards third parties from which it receives information as reliable, however the AHO cannot verify all such information and errors may therefore exist. The AHO does not accept liability for errors in third party information.

GENERAL INSTRUCTIONS

The substance of these notices should be inserted on the charts affected.

Bearings are referred to the true compass and are reckoned clockwise from North; those relating to lights are given as seen by an observer from seaward.

Positions quoted in notices relate to WGS84 which is the horizontal datum for all charts produced by the Australian Hydrographic Office.

The range quoted for a light is its nominal range.

Depths are with reference to the chart datum of each chart. Heights are above mean high water springs or mean higher high water, as appropriate.

The capital letter (P) or (T) after the number of any notice denotes a preliminary or temporary notice respectively, which are contained separately at the end of the permanent notices.

REPORTING OF DANGERS

Mariners are particularly requested to notify the AUSTRALIAN HYDROGRAPHIC OFFICE, Locked Bag 8801 Wollongong, NSW 2500 (Fax 02-4223 6599, e-mail datacentre@hydro.gov.au or, alternatively by filling in and submitting the [Hydrographic Notes](#) forms located on the web site – www.hydro.gov.au), immediately on the discovery of new dangers or suspected dangers to navigation. For changes or defects in aids to navigation notify AusSAR (Fax 02-6230 6868 or email rccaus@amsa.gov.au).

AUTHORISED USE

Copies of Australian notices are available free of charge from the Australian Hydrographic Office (AHO) website (www.hydro.gov.au) and through the eNotices (email) service (www.hydro.gov.au/enotices/enotices.htm).

Individual Notices may be copied for the purpose of inserting Notice substance on official charts and publications. Paper copies may be printed by chart agents and distributed to customers on a cost recovery basis. Participating chart agents are listed on the AHO website as providing a 'Paper Notices to Mariners' service (www.hydro.gov.au/webapps/jsp/agents/agents-list.jsp). Copies of the notices may not be sold for profit without prior written agreement.

NUMERICAL INDEX OF NOTICES TO MARINERS

Edition No 16

Notices	Aus Chart, INT Chart, ENC Cell, AHP, BA Pubs
681	Aus 13, 32, 49, 255, 318, 726
682	Aus 119, 240, 241, 247, 269, 817, 820
683	Amendment to Australian National Tide Tables 2021
684	Aus 4604, 4622, INT 604, 622
685	Aus 256, 827
686	Aus 254
687	Aus 323, 324
688	Aus 115, 755
689	Aus 727, 728
690	Aus 327, 742, 4723, INT 723
691	Aus 14, 305, 710
692	Aus 347, 4728, INT 728
693	Aus 171
694(T)	Aus 200
695(T)	Aus 255
696(T)	Aus 255
697(T)	Aus 268
698(T)	Aus 268
699(T)	Aus 241, 817
700(T)	Aus 249, 250
701(T)	Aus 826
702(T)	Aus 248, 260, 367, 490, 820, 822
703(T)	Aus 256, 827
704(T)	Aus 256, 827
705(T)	Aus 837, 839, 840
706(T)	Aus 20, 720, 721, 722
707(T)	Aus 325, 326
708(T)	Aus 755
709(T)	Aus 328, 329, 744, 745
710(T)	Aus 81
711(T)	Aus 323, 324
712(T)	Aus 49, 323, 324
713(T)	Aus 328, 742
714(T)	Aus 327
715(T)	Aus 327, 4723, INT 723
716(T)	Aus 312
717(T)	Aus 32
718(T)	Aus 32
719(T)	Aus 134, 776
720(T)	Aus 143, 157
721(T)	Aus 155
722(T)	Aus 167

NUMERICAL INDEX OF CHARTS AFFECTED

Edition No 16

Aus Chart	Notices
Aus 13	681
Aus 14	691
Aus 20	706(T)
Aus 32	681, 717(T), 718(T)
Aus 49	681, 712(T)
Aus 81	710(T)
Aus 115	688
Aus 119	682
Aus 134	719(T)
Aus 143	720(T)
Aus 155	721(T)
Aus 157	720(T)
Aus 167	722(T)
Aus 171	693
Aus 200	694(T)
Aus 240	682
Aus 241	682, 699(T)
Aus 247	682
Aus 248	702(T)
Aus 249	700(T)
Aus 250	700(T)
Aus 254	686
Aus 255	681, 695(T), 696(T)
Aus 256	685, 703(T), 704(T)
Aus 260	702(T)
Aus 268	697(T), 698(T)
Aus 269	682
Aus 305	691
Aus 312	716(T)
Aus 318	681
Aus 323	687, 711(T), 712(T)
Aus 324	687, 711(T), 712(T)
Aus 325	707(T)
Aus 326	707(T)
Aus 327	690, 714(T), 715(T)
Aus 328	709(T), 713(T)
Aus 329	709(T)
Aus 347	692
Aus 367	702(T)
Aus 490	702(T)
Aus 710	691
Aus 720	706(T)
Aus 721	706(T)
Aus 722	706(T)
Aus 726	681
Aus 727	689
Aus 728	689
Aus 742	690, 713(T)
Aus 744	709(T)
Aus 745	709(T)
Aus 755	688, 708(T)
Aus 776	719(T)
Aus 817	682, 699(T)
Aus 820	682, 702(T)

Aus Chart	Notices
Aus 822	702(T)
Aus 826	701(T)
Aus 827	685, 703(T), 704(T)
Aus 837	705(T)
Aus 839	705(T)
Aus 840	705(T)
Aus 4604	684
Aus 4622	684
Aus 4723	690, 715(T)
Aus 4728	692

INT Chart	Notices
INT 604	684
INT 622	684
INT 723	690, 715(T)
INT 728	692

681 AUSTRALIA - Products - New Charts, New Editions, Withdrawn Charts

Australian Hydrographic Office

New Charts

<i>Chart</i>	<i>Title and Geographical limits</i>	<i>Scale</i>	<i>Publication Date</i>	<i>Remarks</i>
NIL				

New Electronic Navigation Chart (Aus ENC)

<i>Cell Name</i>	<i>Title</i>	<i>Publication Date</i>	<i>Remarks</i>
NIL			

New Editions and Withdrawn Charts

<i>Chart</i>	<i>Title</i>	<i>Scale</i>	<i>Publication Date</i>	<i>Remarks</i>
Aus 255 (Edition 7)	Australia - East Coast - Queensland - Approaches to Abbot Point	1:25 000	6 August 2021	New edition with general updating throughout; including the removal of plan Abbot Point Wharf. Chart Aus 255 Edition 6 dated 1 June 2018 is now superseded and must be withdrawn from use.
Aus 318 (Edition 2)	Australia - North West Coast - Western Australia - Pelican Island to Penguin Shoal Inset: Cambridge Gulf	1:300 000	6 August 2021	New edition with general updating throughout; including the addition of inset Cambridge Gulf. Chart Aus 318 Edition 1 dated 5 October 2012 is now superseded and must be withdrawn from use.

Charts withdrawn without replacement

<i>Chart</i>	<i>Title</i>	<i>Scale</i>	<i>Publication Date</i>
Aus 13 Edition 1	Australia - North Coast - Plans in Northern Territory (Sheet 1) Plans: Bing Bong Bickerton Island Port Langdon	 1:12 500 1:75 000 1:75 000	17 May 2002
Aus 32 Edition 4	Australia - North Coast - Western Australia - Cambridge Gulf Plans: Wyndham Wharf Approaches to Wyndham Wharf	 1:75 000 1:7 500 1:37 500	19 April 2019
Aus 49 Edition 1	Australia - North West Coast - Western Australia - Plans in Western Australia (Sheet 2) Plans: Beagle Bay Lagrange Bay	 1:50 000 1:50 000	20 November 2009
Aus 726 Edition 4	Australia - North Coast - Western Australia - Approaches to Cambridge Gulf	1:150 000	18 April 2003

Erratum*Notice to Mariners 624/2021*

Advice for the publication of new edition of chart Aus 171 (**edition 2**) was given with an incorrect publication date of 14 May 2021. The correct publication date is 23 July 2021.

681 AUSTRALIA - Products - New Charts, New Editions, Withdrawn Charts
Chart permanently withdrawn

Charts listed above as withdrawn no longer meet chart carriage requirements and should be marked as "superseded" and replaced with the new chart/ new edition listed prior to passage through the area covered by the new chart.

When placing orders with a chart agent between notice of forthcoming edition and its publication, mariners should advise whether their order pertains to the current edition or the new edition.

For further details refer to the AHO website at www.hydro.gov.au for new edition and new chart stock arrival information.

682 AUSTRALIA - Products - New Charts and New Editions to be published shortly

Australian Hydrographic Office

New Charts to be published shortly

<i>Chart</i>	<i>Title</i>	<i>Scale</i>	<i>Remarks</i>
NIL			

New Editions to be published shortly

<i>Chart</i>	<i>Title</i>	<i>Scale</i>	<i>Remarks</i>
Aus 119	Australia - South Coast - Western Australia - Approaches to Esperance	1:75 000	New edition with general updating throughout; including latest bathymetric data.
Aus 817	Australia - East Coast - Queensland - Great Sandy Strait and Hervey Bay	1:150 000	New edition with general updating throughout.
Aus 820	Australia - East Coast - Queensland - North Reef to Port Clinton	1:150 000	New edition with general updating throughout; including latest bathymetric data.

Charts to be withdrawn without replacement 20 August 2021

<i>Chart</i>	<i>Title</i>	<i>Scale</i>	<i>Publication Date</i>
Aus 240 Edition 1	Australia - East Coast - Queensland - Great Sandy Strait (Southern Sheet)	1:50 000	10 April 2009
Aus 241 Edition 1	Australia - East Coast - Queensland - Great Sandy Strait (Northern Sheet)	1:50 000	10 April 2009
Aus 247 Edition 1	Australia - East Coast - Queensland - Keppel Bay Plan: Rosslyn Bay	1:80 000 1:10 000	9 September 2016
Aus 269 Edition 1	Australia - East Coast - Queensland - Plans of Airlie Beach and Shute Harbour Plans: Airlie Beach Shute Harbour	 1:15 000 1:15 000	8 April 2016

683 AUSTRALIA - Product - Amendment to Australian National Tide Tables 2021
Australian Hydrographic Office

ANTT 2021

Page 355 <i>Amend</i>	GLADSTONE Correction to Chart Datum ENC AU5245X6 to AU5GLT01
Page 356 <i>Amend</i>	HOBART To Chart Datum AUS 171 NE 23 MAY 2021 0.0
Page 358 <i>Delete</i>	ONSLow Correction to Chart Datum AUS 69 NC 18 DEC 2015 0.0
Page 358 <i>Amend</i>	PORT DOUGLAS Correction to Chart Datum ENC AU5270P1 to AU5PTI01
Page 361 <i>Delete</i>	WESTERN PORT Correction to Chart Datum AUS 150 NE 04 JUN 2010 0.0

684 PACIFIC OCEAN - Lyra Reef - Light buoy northeastwards
JAMSTEC

Aus 4604 (INT 604) [429/2021]			
Delete	light buoy	00° 01'.0 N	155° 57'.6 E
Aus 4622 (INT 622) [237/2021]			
Delete	light buoy	00° 01'.0 N	155° 57'.6 E

685 AUSTRALIA - QUEENSLAND - Townsville - Lights
Maritime Safety Queensland Notice 284/2020

Aus 256 [427/2021]			
Insert	light, Fl. Y. 2·5s	19° 14'.62 S	146° 50'.62 E
	light, Fl. Y. 2·5s	19° 14'.90 S	146° 50'.85 E
	light, Fl. Y. 2·5s	19° 15'.06 S	146° 50'.99 E
Delete	depth, 2 ₅ m	19° 15'.0 S	146° 51'.0 E
Aus 827 [626/2021]			
Insert	light, Fl. Y. 2·5s	19° 14'.62 S	146° 50'.62 E
	light, Fl. Y. 2·5s	19° 15'.09 S	146° 51'.00 E

686 AUSTRALIA - QUEENSLAND - Whitsunday Group - Shaw Island - Platypus Rock - Light buoy moved
Maritime Safety Queensland Notice 272/2021

Aus 254 (Lindeman Island) [138/2021]			
Move	light buoy	20° 31'.19 S	149° 02'.28 E
	to	20° 31'.230 S	149° 02'.304 E

687 AUSTRALIA - WESTERN AUSTRALIA - Beagle Bay to Lagrange Bay - Chart withdrawn; depths; marine farm; obstruction; chart note; legend; ZOC diagram

Australian Hydrographic Office

Note: position of existing chart notes may vary on certain charts.

Aus 323 [910/2020]

Insert	accompanying block	16° 51'.0 S	122° 29'.0 E
	accompanying chart note, ELECTRONIC NAVIGATIONAL CHART (ENC)	17° 06'.0 S	124° 19'.0 E
Delete	magenta limits with legend, Aus 49, centred on	17° 07'.3 S	122° 56'.7 E

Aus 324 [950/2020]

Insert	danger circle with legend, <i>Obstrn</i> , centred on	16° 56'.75 S	122° 18'.17 E
	magenta legend, <i>ENC</i> (see <i>Note</i>)	18° 36'.0 S	121° 35'.0 E
	accompanying chart note, ELECTRONIC NAVIGATIONAL CHART (ENC)	19° 13'.0 S	122° 03'.0 E
	accompanying ZOC diagram	19° 39'.0 S	122° 08'.5 E
Delete	magenta limits with legend, Aus 49, centred on	16° 53'.0 S	122° 22'.4 E
	depth, 10 ₁ m	16° 56'.7 S	122° 18'.5 E
	magenta limits with legend, Aus 49, centred on	18° 35'.0 S	121° 41'.0 E

688 AUSTRALIA - WESTERN AUSTRALIA - Bunbury - Light buoy
Southern Ports

Aus 115 [NE 19/3/2021]

Amend	structure colour to <i>R</i>	33° 15'.6 S	115° 38'.6 E
-------	------------------------------	-------------	--------------

Aus 755 [314/2021]

Amend	light buoy to <i>Fl(5)Y.20s</i>	33° 15'.6 S	115° 38'.6 E
-------	---------------------------------	-------------	--------------

689 AUSTRALIA - WESTERN AUSTRALIA - Eclipse Islands - Depths
Australian Hydrographic Office

Aus 727 [601/2020]

Insert	accompanying block A	13° 51'.0 S	126° 20'.0 E
	accompanying block B	13° 51'.0 S	126° 32'.0 E

Aus 728 [1356/2015]

Insert	accompanying block	13° 51'.0 S	126° 20'.0 E
--------	--------------------	-------------	--------------

690 AUSTRALIA - WESTERN AUSTRALIA - Montebello Islands - Lit platform removed eastwards
Santos

Aus 327 [99/2021]

Delete	lit platform, with legend SINBAD Mo(U)Y.15s	20° 29'.0 S	115° 42'.7 E
--------	---	-------------	--------------

Aus 742 [275/2021]

Delete	lit platform, with legend SINBAD Mo(U)Y.15s	20° 29'.0 S	115° 42'.7 E
--------	---	-------------	--------------

Aus 4723 (INT 723) [434/2021]

Delete	lit platform, with legend SINBAD	20° 29'.0 S	115° 42'.7 E
--------	----------------------------------	-------------	--------------

691 AUSTRALIA - WESTERN AUSTRALIA - Port Langdon to Bing Bong - Chart withdrawn; chart note; legends; chart limits; ZOC diagram

Australian Hydrographic Office

Note: position of existing chart notes may vary on certain charts.

Aus 14 [875/2016]

Delete	magenta legend, Adjoining Chart Aus 13, in W border	13° 52'.5 S	136° 14'.0 E
--------	---	-------------	--------------

Aus 305 [1029/2020]

Insert	magenta legend, <i>ENC (see Note)</i>	13° 37'.0 S	136° 52'.0 E
	magenta legend, <i>ENC (see Note)</i>	13° 58'.2 S	136° 12'.5 E
	accompanying chart note, ELECTRONIC NAVIGATIONAL CHART (ENC)	15° 49'.5 S	136° 08'.5 E

Delete	magenta limits with legend, Aus 13, centred on	13° 42'.0 S	136° 50'.0 E
	magenta limits with legend, Aus 13, centred on	13° 51'.0 S	136° 08'.0 E
	magenta limits with legend, Aus 13, centred on	13° 55'.0 S	135° 34'.6 E
	magenta limits with legend, Aus 13, centred on	13° 56'.0 S	135° 30'.4 E

Aus 710 [1029/2020]

Insert	magenta legend, <i>ENC (see Note)</i>	15° 34'.0 S	136° 24'.5 E
	accompanying chart note, ELECTRONIC NAVIGATIONAL CHART (ENC)	15° 52'.8 S	136° 17'.8 E

Delete	magenta limits with legend, Aus 13, centred on	15° 36'.4 S	136° 24'.2 E
	chart note, OMISSIONS FROM CHART	15° 51'.4 S	136° 23'.0 E

692 AUSTRALIA - SOUTH AUSTRALIA - Cape Martin - Light range reduced

Australian Hydrographic Office

Aus 347 [435/2021]

Amend	light range to 14M	37° 29'.4 S	140° 00'.8 E
-------	--------------------	-------------	--------------

Aus 4728 (INT 728) [244/2020]

Amend	light range to 14M	37° 29'.4 S	140° 00'.8 E
-------	--------------------	-------------	--------------

693 AUSTRALIA - TASMANIA - Eaglehawk Bay - Submarine cable

MAST

Aus 171 [NE 23/7/2021]

Insert	submarine cable, between	43° 01'.32 S	147° 53'.68 E
		43° 01'.15 S	147° 53'.70 E

Delete	submarine cable, between	43° 01'.0 S	147° 53'.9 E
		43° 01'.3 S	147° 53'.9 E

694(T)/2021 AUSTRALIA - NEW SOUTH WALES - Port Jackson - Sydney Harbour Bridge - Harbour works
Port Authority of New South Wales Notice 16/2021

Maintenance works are in progress on the Sydney Harbour Bridge (33° 51'.14 S 151° 12'.64 E).

Vessels with large air draft should participate in Sydney VTS.

Mariners are advised to navigate with caution.

Chart temporarily affected - Aus 200

695(T)/2021 AUSTRALIA - QUEENSLAND - Abbot Point - Virtual AIS
Maritime Safety Queensland Notice 73/2021, 123(T)/2021

Virtual AIS exist as follows:

<i>Position</i>	<i>Remarks</i>
19° 50'.57 S 148° 05'.31 E	starboard lateral AIS
19° 50'.88 S 148° 05'.98 E	port lateral AIS
19° 51'.21 S 148° 05'.12 E	starboard lateral AIS
19° 51'.11 S 148° 05'.81 E	port lateral AIS
19° 51'.36 S 148° 05'.66 E	port lateral AIS
19° 51'.58 S 148° 05'.52 E	port lateral AIS.

Chart temporarily affected - Aus 255

696(T)/2021 AUSTRALIA - QUEENSLAND - Abbot Point - Virtual AIS
Former Notice - 369(T)/2021 is cancelled
Maritime Safety Queensland Notice 123(T)/2021

Cancel this notice on receipt.

Chart formerly affected - Aus 255

697(T)/2021 AUSTRALIA - QUEENSLAND - Bowen - Port Denison - Light buoy unlit
Maritime Safety Queensland Notice 274(T)/2021

The port lateral light buoy, Q.R (20° 01'.36 S 148° 16'.80 E), is unlit.

Chart temporarily affected - Aus 268

698(T)/2021 AUSTRALIA - QUEENSLAND - Bowen - Wreck
Maritime Safety Queensland Notice 294(T)/2021

A wreck marked by a special light buoy, Q.Y, exists in position 20° 01'.33 S 148° 15'.56 E.

Mariners are advised to navigate with caution in the area.

Chart temporarily affected - Aus 268

699(T)/2021 AUSTRALIA - QUEENSLAND - Great Sandy Strait - Dayman Point - Scientific instruments
Former Notice - 530(T)/2021 is cancelled
Maritime Safety Queensland

Cancel this notice on receipt.

Chart formerly affected - Aus 241 - Aus 817

700(T)/2021 AUSTRALIA - QUEENSLAND - Hay Point - Dredging operations

Maritime Safety Queensland Notices 293(T)/2021

Vessels *Pacific Tiger* and *Sounds Good* are conducting dredging operations at the DBCT berths (21° 14'.97 S 149° 18'.33 E).

Vessels will display appropriate lights and shapes and will monitor VHF Ch 10 and Ch 16.

Mariners are advised to navigate with caution in the area.

Chart temporarily affected - Aus 249 - Aus 250

701(T)/2021 AUSTRALIA - QUEENSLAND - Shark Bay - Light buoy off station

Maritime Safety Queensland Notice 280(T)/2021

The west cardinal light buoy, Q(9)15s (19° 43'.08 S 147° 45'.22 E), is off station.

Chart temporarily affected - Aus 826

702(T)/2021 AUSTRALIA - QUEENSLAND - Shoalwater Bay - Live firing

Maritime Safety Queensland Notice 291(T)/2021

Live firing will be conducted in the marine component of the Shoalwater Bay training area during the period 9 to 13 August 2021.

A marine danger area extends to all internal waters bounded by the following positions:

22° 21'.20 S 150° 10'.52 E
 22° 35'.87 S 150° 28'.80 E
 22° 46'.20 S 150° 48'.51 E
 22° 41'.12 S 150° 50'.17 E
 22° 32'.22 S 150° 47'.36 E
 22° 28'.50 S 150° 45'.29 E
 22° 20'.36 S 150° 43'.10 E
 22° 17'.71 S 150° 33'.66 E
 22° 22'.58 S 150° 30'.40 E
 22° 31'.07 S 150° 34'.01 E
 22° 33'.77 S 150° 33'.27 E
 22° 20'.35 S 150° 12'.00 E.

All waters, creeks, beaches and other areas within the declared marine danger area are not available for access.

There will be a safe anchorage available at Supply Bay Townshend Island.

Mariners are advised to keep clear of this area throughout the above times.

Chart temporarily affected - Aus 248 - Aus 260 - Aus 367 - Aus 490 - Aus 820 - Aus 822

703(T)/2021 AUSTRALIA - QUEENSLAND - Townsville - Harbour works

Maritime Safety Queensland Notice 278(T)/2020

Harbour works associated with the construction of a rock wall are in progress in an area bounded by the coastline and the following positions:

<i>Position</i>	<i>Remarks</i>
19° 14'.78 S 146° 50'.33 E	
19° 14'.57 S 146° 50'.47 E	special light buoy, Fl.Y.2.5s
19° 14'.62 S 146° 50'.61 E	

Uncharted rocks resulting from the works will present a hazard to navigation in the area.

Mariners are advised not to anchor within or navigate through the area.

Chart temporarily affected - Aus 256 - Aus 827

704(T)/2021 AUSTRALIA - QUEENSLAND - Townsville - Harbour works completed*Former Notice* - 619(T)/2020 is cancelled

Maritime Safety Queensland Notice 278(T)/2020

Cancel this notice on receipt.

Chart formerly affected - Aus 256 - Aus 827**705(T)/2021 AUSTRALIA - TORRES STRAIT - Great North East Channel - Survey operations completed***Former Notice* - 166(T)/2021 is cancelled

Maritime Safety Queensland Notice 55(T)/2021

Cancel this notice on receipt.

Chart formerly affected - Aus 837 - Aus 839 - Aus 840**706(T)/2021 AUSTRALIA - NORTHERN TERRITORY - Van Diemen Gulf - Survey operations; tide gauges**

Northern Territory Government Notice 6(T)/2021

MV *Offshore Guardian* and MV *Special Order* are conducting survey operations in an area bounded by the coast and the following positions:

11° 23'.61 S 131° 30'.56 E
 11° 21'.74 S 131° 32'.65 E
 11° 32'.38 S 131° 40'.84 E
 11° 56'.05 S 131° 12'.87 E
 11° 53'.57 S 131° 10'.68 E
 11° 53'.34 S 131° 07'.27 E
 11° 49'.44 S 131° 06'.94 E.

Vessels will monitor VHF Ch 16.

Tide gauges, marked by special light buoys *Fl. Y. 5s*, exist on the seabed in the following positions:

11° 22'.70 S 131° 31'.50 E
 11° 32'.20 S 131° 41'.40 E
 11° 37'.00 S 131° 26'.00 E
 11° 41'.60 S 131° 31'.30 E
 11° 44'.70 S 131° 17'.00 E
 11° 49'.60 S 131° 21'.20 E
 11° 52'.60 S 131° 07'.00 E
 12° 02'.80 S 131° 17'.00 E.

Mariners are advised to navigate with caution in the area.

Chart temporarily affected - Aus 20 - Aus 720 - Aus 721 - Aus 722**707(T)/2021 AUSTRALIA - WESTERN AUSTRALIA - Bedout Islet - Seismic survey northwards completed***Former Notice* - 257(T)/2021 is cancelled

Santos

Cancel this notice on receipt.

Chart formerly affected - Aus 325 - Aus 326**708(T)/2021 AUSTRALIA - WESTERN AUSTRALIA - Cape Bouvard - Scientific instruments**

Department of Transport WA Notice 92/2021

Special light buoys, *Fl. Y. 2.5s*, exist in the following positions:

32° 36'.60 S 115° 35'.76 E
 32° 36'.84 S 115° 34'.98 E
 32° 37'.50 S 115° 35'.58 E
 32° 37'.74 S 115° 34'.80 E.

Chart temporarily affected - Aus 755

709(T)/2021 AUSTRALIA - WESTERN AUSTRALIA - Exmouth Reef to Ningaloo Reef - Scientific instruments recovered

Former Notice - 968(T)/2020 is cancelled
Department of Transport WA

Cancel this notice on receipt.

Chart formerly affected - Aus 328 - Aus 329 - Aus 744 - Aus 745

710(T)/2021 AUSTRALIA - WESTERN AUSTRALIA - Geraldton - Harbour works completed

Former Notice - 342(T)/2021 is cancelled
Mid West Ports

Cancel this notice on receipt.

Chart formerly affected - Aus 81

711(T)/2021 AUSTRALIA - WESTERN AUSTRALIA - Lacepede Channel - Survey operations; tide gauges

Fugro

MV *Pacific Conquest* is conducting survey operations in an area bounded by the following positions:

17° 22'.90 S 122° 05'.26 E
17° 10'.17 S 121° 53'.99 E
16° 57'.99 S 122° 05'.01 E
16° 48'.16 S 122° 06'.63 E
16° 48'.81 S 122° 20'.56 E
16° 51'.31 S 122° 28'.05 E
17° 05'.67 S 122° 13'.45 E.

Tide gauges, marked by special buoys, exist on the seabed in the following positions:

17° 22'.20 S 122° 05'.30 E
17° 10'.20 S 121° 55'.00 E
17° 05'.50 S 122° 12'.30 E
17° 01'.00 S 122° 17'.00 E
16° 58'.10 S 122° 05'.40 E
16° 51'.40 S 122° 27'.20 E
16° 49'.30 S 122° 19'.80 E
16° 48'.60 S 122° 07'.00 E.

Current meters marked by special buoys, exist in position 16° 53'.40 S 122° 18'.20 E and 17° 02'.00 S 122° 07'.50 E.

Mariners are advised to navigate with caution in the area.

Chart temporarily affected - Aus 323 - Aus 324

712(T)/2021 AUSTRALIA - WESTERN AUSTRALIA - Lacepede Channel - Survey operations; tide gauges

Former Notice - 491(T)/2021 is cancelled
Fugro

Cancel this notice on receipt.

Chart formerly affected - Aus 49 - Aus 323 - Aus 324

713(T)/2021 AUSTRALIA - WESTERN AUSTRALIA - Montebello Islands - Subsea operations northwestwards completed

Former Notice - 343(T)/2021 is cancelled
Woodside Energy Ltd , Australian Maritime Safety Authority

Cancel this notice on receipt.

Chart formerly affected - Aus 328 - Aus 742

714(T)/2021 AUSTRALIA - WESTERN AUSTRALIA - Rankin Bank - Well plug and abandonment works completed eastwards

Former Notice - 407(T)/2021 is cancelled
Woodside Energy Ltd

Cancel this notice on receipt.

Chart formerly affected - Aus 327

715(T)/2021 AUSTRALIA - WESTERN AUSTRALIA - Rankin Bank - Drill rig eastwards
Diamond Offshore Drilling

Drill rig *Ocean Apex* is conducting drilling operations in position 19° 42'.60 S 115° 53'.24 E.

Chart temporarily affected - Aus 327 - Aus 4723 (INT 723)

716(T)/2021 AUSTRALIA - WESTERN AUSTRALIA - Sahul Banks - Survey operations
RPS Group

Vessel *VOS Shine*, with a 200m towed array, is conducting survey operations in the vicinity of position 10° 40'.32 S 126° 06'.92 E.

Mariners are advised to navigate with caution in the area. 2M clearance requested.

Chart temporarily affected - Aus 312

717(T)/2021 AUSTRALIA - WESTERN AUSTRALIA - Wyndham - Middle Ground - Chart withdrawn
Former Notice - 1012(T)/2020 is cancelled
Department of Transport WA

Cancel this notice on receipt.

Chart formerly affected - Aus 32

718(T)/2021 AUSTRALIA - WESTERN AUSTRALIA - Wyndham - Chart withdrawn
Former Notice - 917(P)/2019 is cancelled
Department of Transport WA

Cancel this notice on receipt.

Chart formerly affected - Aus 32

719(T)/2021 AUSTRALIA - SOUTH AUSTRALIA - Port Lincoln - Scientific instruments
Department for Infrastructure and Transport SA Notice 22(T)/2021

Scientific instruments exist on the seabed as follows:

Position	Remarks
34° 44.29' S 135° 57.34' E	
34° 46.91' S 135° 53.52' E	
34° 43.06' S 135° 54.27' E	2 poly surface floats

Mariners are advised to navigate with caution in the area.

Chart temporarily affected - Aus 134 - Aus 776

720(T)/2021 AUSTRALIA - VICTORIA - Port Phillip - Wedge Spit - Light beacon relit
Former Notice - 656(T)/2021 is cancelled
Parks Victoria Notice 229(T)/2021

Cancel this notice on receipt.

Chart formerly affected - Aus 143 - Aus 157

721(T)/2021 AUSTRALIA - VICTORIA - Port Phillip - Altona - Light beacon relit

Former Notice - 616(T)/2021 is cancelled

Parks Victoria Notice 231(T)/2021

Cancel this notice on receipt.

Chart formerly affected - Aus 155**722(T)/2021 AUSTRALIA - TASMANIA - Port Dalrymple - Bell Bay - Harbour works**

Marine and Safety Tasmania Notice M207/2021

Remediation works are in progress at Bell Bay Berth 6 (41° 08'.39 S 146° 51'.14 E).

Mariners are advised to navigate with caution in the area.

Chart temporarily affected - Aus 167

II

HYDROGRAPHIC REPORTS

NIL

To accompany Australian Notice to Mariners 687/2021

ELECTRONIC NAVIGATIONAL CHART (ENC)
Larger scale ENC content exists in this area.
When using electronic navigation systems,
certain vessels (e.g. restricted by depth or
size) may benefit from the additional level of
detail shown in the largest scale ENC
product available.

Note for chart Aus 323

To accompany Australian Notice to Mariners 691/2021

ELECTRONIC NAVIGATIONAL CHART (ENC)
Larger scale ENC content exists in this area.
When using electronic navigation systems,
certain vessels (e.g. restricted by depth or
size) may benefit from the additional level of
detail shown in the largest scale ENC
product available.

Note for chart Aus 305

To accompany Australian Notice to Mariners 687/2021

ELECTRONIC NAVIGATIONAL CHART (ENC)
Larger scale ENC content exists in this area.
When using electronic navigation systems,
certain vessels (e.g. restricted by depth or
size) may benefit from the additional level of
detail shown in the largest scale ENC
product available.

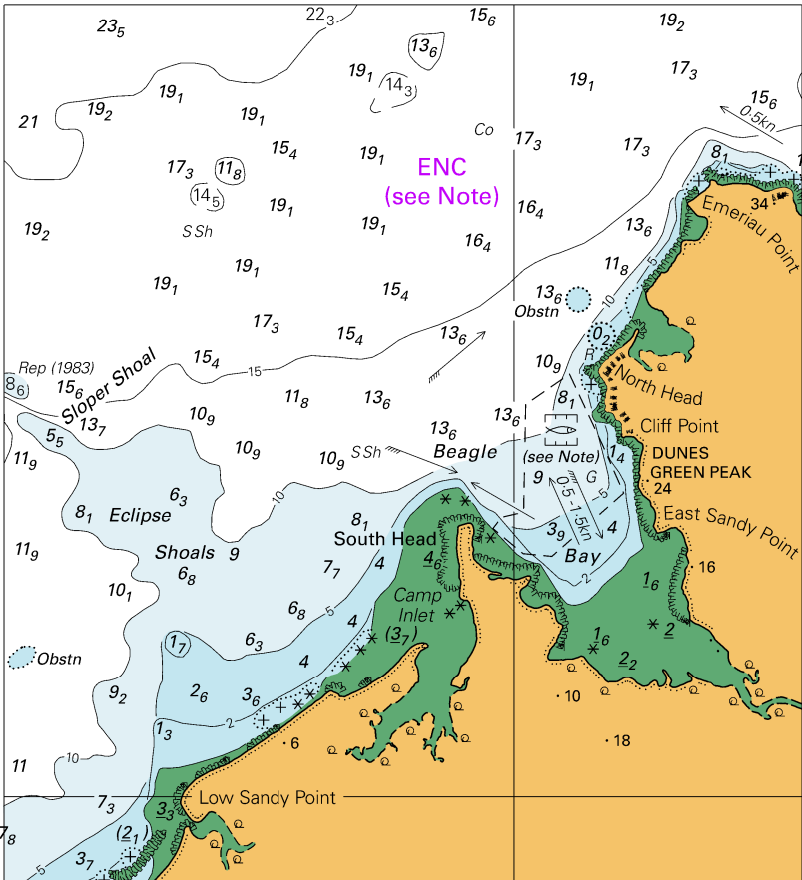
Note for chart Aus 324

To accompany Australian Notice to Mariners 691/2021

ELECTRONIC NAVIGATIONAL CHART (ENC)
Larger scale ENC content exists in this area.
When using electronic navigation systems,
certain vessels (e.g. restricted by depth or
size) may benefit from the additional level of
detail shown in the largest scale ENC
product available.

Note for chart Aus 710

To accompany Australian Notice to Mariners 687/2021

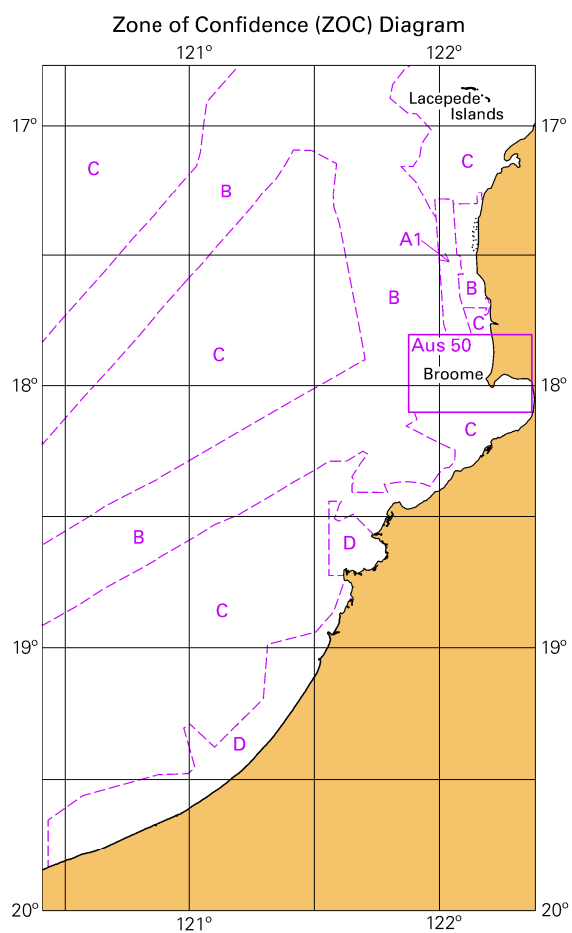


© Commonwealth of Australia 2021

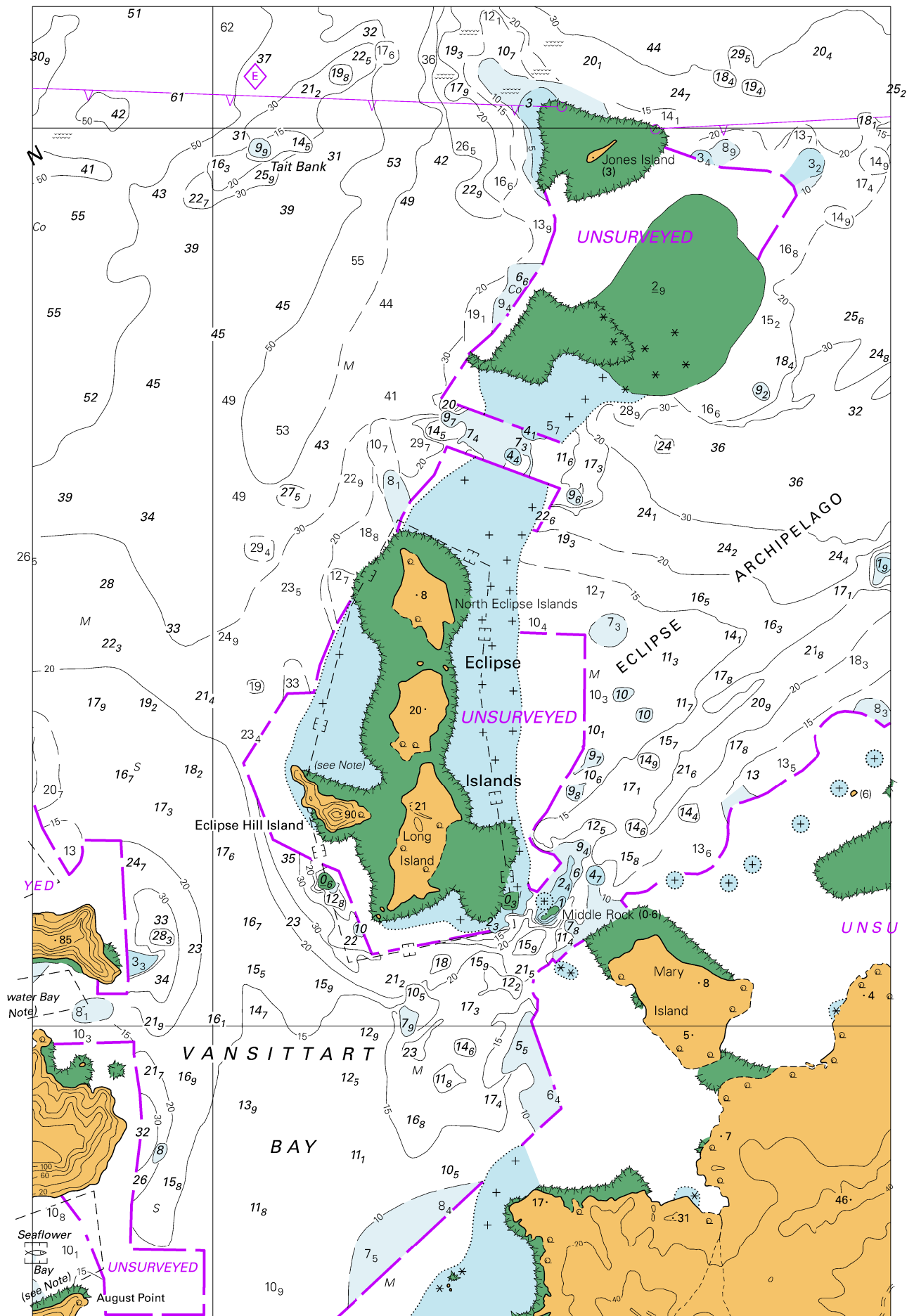
Block for chart Aus 323

(105.5 x 116.0mm)

To accompany Australian Notice to Mariners 687/2021



© Commonwealth of Australia 2021
Block for chart Aus 324 (65.2 x 111.8mm)



To accompany Australian Notice to Mariners 689/2021

