



23 July 2021

Edition 15

# AUSTRALIAN NOTICES TO MARINERS

**Notices 624 - 680**

Published fortnightly by the Australian Hydrographic Office



Australian Notices to Mariners are the authority for correcting charts and publications published by the Australian Hydrographic Office covering Australia, Papua New Guinea, Solomon Islands, Australian Antarctic Territory and Timor-Leste.

Commodore S.T. DUNNE RAN  
*Hydrographer of Australia*

---

## SECTIONS.

- I. **Australian Notices to Mariners, including blocks and notes.**
- II. **Hydrographic Reports.**

## SUPPLEMENTS.

- I. **Tracings**
- II. **Cumulative List of Australian Notices to Mariners.**
- III. **Cumulative List of Temporary and Preliminary Australian Notices to Mariners.**
- IV. **Temporary and Preliminary Notices in force.**

---

© Commonwealth of Australia 2021

This work is copyright. Apart from any use permitted under the Copyright Act 1968, no part may be reproduced by any process, adapted, communicated or commercially exploited without prior written permission from The Commonwealth represented by the Australian Hydrographic Office.

## IMPORTANT NOTICE

This edition of Notices to Mariners includes all significant information affecting AHO products which the AHO has become aware of since the last edition. All reasonable efforts have been made to ensure the accuracy and completeness of the information, including third party information, on which these updates are based. The AHO regards third parties from which it receives information as reliable, however the AHO cannot verify all such information and errors may therefore exist. The AHO does not accept liability for errors in third party information.

---

## GENERAL INSTRUCTIONS

The substance of these notices should be inserted on the charts affected.

Bearings are referred to the true compass and are reckoned clockwise from North; those relating to lights are given as seen by an observer from seaward.

Positions quoted in notices relate to WGS84 which is the horizontal datum for all charts produced by the Australian Hydrographic Office.

The range quoted for a light is its nominal range.

Depths are with reference to the chart datum of each chart. Heights are above mean high water springs or mean higher high water, as appropriate.

The capital letter (P) or (T) after the number of any notice denotes a preliminary or temporary notice respectively, which are contained separately at the end of the permanent notices.

---

## REPORTING OF DANGERS

Mariners are particularly requested to notify the AUSTRALIAN HYDROGRAPHIC OFFICE, Locked Bag 8801 Wollongong, NSW 2500 (Fax 02-4223 6599, e-mail [datacentre@hydro.gov.au](mailto:datacentre@hydro.gov.au) or, alternatively by filling in and submitting the [Hydrographic Notes](#) forms located on the web site – [www.hydro.gov.au](http://www.hydro.gov.au)), immediately on the discovery of new dangers or suspected dangers to navigation. For changes or defects in aids to navigation notify AusSAR (Fax 02-6230 6868 or email [rccaus@amsa.gov.au](mailto:rccaus@amsa.gov.au)).

---

## AUTHORISED USE

Copies of Australian notices are available free of charge from the Australian Hydrographic Office (AHO) website ([www.hydro.gov.au](http://www.hydro.gov.au)) and through the eNotices (email) service ([www.hydro.gov.au/enotices/enotices.htm](http://www.hydro.gov.au/enotices/enotices.htm)).

Individual Notices may be copied for the purpose of inserting Notice substance on official charts and publications. Paper copies may be printed by chart agents and distributed to customers on a cost recovery basis. Participating chart agents are listed on the AHO website as providing a 'Paper Notices to Mariners' service ([www.hydro.gov.au/webapps/jsp/agents/agents-list.jsp](http://www.hydro.gov.au/webapps/jsp/agents/agents-list.jsp)). Copies of the notices may not be sold for profit without prior written agreement.

## NUMERICAL INDEX OF NOTICES TO MARINERS

### Edition No 15

| Notices | Aus Chart, INT Chart, ENC Cell, AHP, BA Pubs    |
|---------|---|
| 624     | Aus 150, 169, 170, 171, 172, 173, 174, 175, 268 |
| 625     | Aus 13, 32, 49, 255, 269, 726                   |
| 626     | Aus 827   |
| 627     | Aus 6   |
| 628     | Aus 236   |
| 629     | Aus 781   |
| 630     | Aus 136, 485, 778                               |
| 631     | Aus 181   |
| 632     | Aus 157   |
| 633     | Aus 181   |
| 634     | Aus 487, 788, 801                               |
| 635     | Aus 151   |
| 636     | Aus 766, 767, 796, 797                          |
| 637(T)  | Aus 192   |
| 638(T)  | Aus 251, 255, 821, 824, 825, 826                |
| 639(T)  | Aus 268   |
| 640(T)  | Aus 268, 825, 826                               |
| 641(T)  | Aus 293, 296, 299, 700                          |
| 642(T)  | Aus 236   |
| 643(T)  | Aus 505, 621                                    |
| 644(T)  | Aus 505, 621                                    |
| 645(T)  | Aus 841, 842                                    |
| 646(T)  | Aus 25, 26                                      |
| 647(T)  | Aus 64, 328, 743, 744                           |
| 648(T)  | Aus 319, 320                                    |
| 649(T)  | Aus 742, 743                                    |
| 650(T)  | Aus 73  |
| 651(T)  | Aus 328, 329, 744                               |
| 652(T)  | Aus 328, 329, 744                               |
| 653(T)  | Aus 64  |
| 654(T)  | Aus 54  |
| 655(T)  | Aus 342   |
| 656(T)  | Aus 143, 157                                    |
| 657(T)  | Aus 143, 150                                    |
| 658(T)  | Aus 143, 144, 788                               |
| 659(T)  | Aus 143, 144, 150, 788                          |
| 660(T)  | Aus 150, 151                                    |
| 661(T)  | Aus 150, 151                                    |
| 662(T)  | Aus 150   |
| 663(T)  | Aus 151   |
| 664(T)  | Aus 151   |
| 665(T)  | Aus 151   |
| 666(T)  | Aus 150, 151                                    |
| 667(T)  | Aus 150, 151                                    |
| 668(T)  | Aus 150, 151                                    |
| 669(T)  | Aus 179, 487, 767, 798, 800                     |
| 670(T)  | Aus 767   |
| 671(T)  | Aus 169   |
| 672(T)  | Aus 172   |
| 673(T)  | Aus 766, 797                                    |
| 674(T)  | Aus 170, 766, 797                               |
| 675(T)  | Aus 169, 171                                    |
| 676(T)  | Aus 171, 796                                    |
| 677(T)  | Aus 171   |
| 678(T)  | Aus 171, 174                                    |
| 679(T)  | Aus 172   |
| 680(T)  | Aus 172   |

## NUMERICAL INDEX OF CHARTS AFFECTED

### Edition No 15

| Aus Chart | Notices  |
|-----------|--|
| Aus 6     | 627  |
| Aus 13    | 625  |
| Aus 25    | 646(T)   |
| Aus 26    | 646(T)   |
| Aus 32    | 625  |
| Aus 49    | 625  |
| Aus 54    | 654(T)   |
| Aus 64    | 647(T), 653(T)   |
| Aus 73    | 650(T)   |
| Aus 136   | 630  |
| Aus 143   | 656(T), 657(T), 658(T), 659(T)   |
| Aus 144   | 658(T), 659(T)   |
| Aus 150   | 624, 657(T), 659(T), 660(T), 661(T),<br>662(T), 666(T), 667(T), 668(T) |
| Aus 151   | 635, 660(T), 661(T), 663(T), 664(T),<br>665(T), 666(T), 667(T), 668(T) |
| Aus 157   | 632, 656(T)  |
| Aus 169   | 624, 671(T), 675(T)  |
| Aus 170   | 624, 674(T)  |
| Aus 171   | 624, 675(T), 676(T), 677(T), 678(T)                                    |
| Aus 172   | 624, 672(T), 679(T), 680(T)  |
| Aus 173   | 624  |
| Aus 174   | 624, 678(T)  |
| Aus 175   | 624  |
| Aus 179   | 669(T)   |
| Aus 181   | 631, 633   |
| Aus 192   | 637(T)   |
| Aus 236   | 628, 642(T)  |
| Aus 251   | 638(T)   |
| Aus 255   | 625, 638(T)  |
| Aus 268   | 624, 639(T), 640(T)  |
| Aus 269   | 625  |
| Aus 293   | 641(T)   |
| Aus 296   | 641(T)   |
| Aus 299   | 641(T)   |
| Aus 319   | 648(T)   |
| Aus 320   | 648(T)   |
| Aus 328   | 647(T), 651(T), 652(T)   |
| Aus 329   | 651(T), 652(T)   |
| Aus 342   | 655(T)   |
| Aus 485   | 630  |
| Aus 487   | 634, 669(T)  |
| Aus 505   | 643(T), 644(T)   |
| Aus 621   | 643(T), 644(T)   |
| Aus 700   | 641(T)   |
| Aus 726   | 625  |
| Aus 742   | 649(T)   |
| Aus 743   | 647(T), 649(T)   |
| Aus 744   | 647(T), 651(T), 652(T)   |
| Aus 766   | 636, 673(T), 674(T)  |
| Aus 767   | 636, 669(T), 670(T)  |
| Aus 778   | 630  |
| Aus 781   | 629  |
| Aus 788   | 634, 658(T), 659(T)  |
| Aus 796   | 636, 676(T)  |
| Aus 797   | 636, 673(T), 674(T)  |

| Aus Chart | Notices        |
|-----------|----------------|
| Aus 798   | 669(T)         |
| Aus 800   | 669(T)         |
| Aus 801   | 634            |
| Aus 821   | 638(T)         |
| Aus 824   | 638(T)         |
| Aus 825   | 638(T), 640(T) |
| Aus 826   | 638(T), 640(T) |
| Aus 827   | 626            |
| Aus 841   | 645(T)         |
| Aus 842   | 645(T)         |

**624 AUSTRALIA - Products - New Charts, New Editions, Withdrawn Charts**

Australian Hydrographic Office

**New Charts**

| <i>Chart</i> | <i>Title and Geographical limits</i> | <i>Scale</i> | <i>Publication Date</i> | <i>Remarks</i> |
|--------------|--------------------------------------|--------------|-------------------------|----------------|
| NIL          |                                      |              |                         |                |

**New Electronic Navigation Chart (Aus ENC)**

| <i>Cell Name</i> | <i>Title</i>   | <i>Scale</i> | <i>Publication Date</i> | <i>Remarks</i>               |
|------------------|--|--------------|-------------------------|------------------------------|
| AU5BBG01         | Australia - Northern Territory - Gulf of Carpentaria - Bing Bong |              | 22 July 2021            | AU5013P1 has been withdrawn. |
| AU6SYD02         | Australia - New South Wales - Glebe Island Berths 7 and 8        |              | 22 July 2021            |                              |

**New Editions and Withdrawn Charts**

| <i>Chart</i>           | <i>Title</i>   | <i>Scale</i> | <i>Publication Date</i> | <i>Remarks</i>  |
|------------------------|--|--------------|-------------------------|---|
| Aus 171<br>(Edition 2) | Australia - South Coast - Tasmania - Hobart to Norfolk Bay<br>Inset:<br>Bowen Bridge | 1:50 000     | 14 May 2021             | New edition with general updating throughout; including the addition of inset Bowen Bridge.<br><b>Chart Aus 171 Edition 1 dated 6 January 2006 is now superseded and must be withdrawn from use.</b>    |
| Aus 173<br>(Edition 2) | Australia - Tasmania - D'Entrecasteaux Channel                                       | 1:75 000     | 23 July 2021            | New edition with general updating throughout; including the removal of plan Little Oyster Cove.<br><b>Chart Aus 173 Edition 1 dated 1 August 2008 is now superseded and must be withdrawn from use.</b> |
| Aus 268<br>(Edition 2) | Australia - East Coast - Queensland - Approaches to Bowen                            | 1:37 500     | 23 July 2021            | New edition with general updating throughout; including the removal of plan Bowen.<br><b>Chart Aus 268 Edition 1 dated 8 April 2016 is now superseded and must be withdrawn from use.</b>               |

**Charts withdrawn without replacement**

| <i>Chart</i>         | <i>Title</i>   | <i>Scale</i>   | <i>Publication Date</i> |
|----------------------|--|--|-------------------------|
| Aus 150<br>Edition 2 | Australia - South Coast - Victoria - Western Port<br>Plans:<br>Eastern Entrance to Western Port<br>The Narrows<br>Rhyll      | 1:75 000<br><br>1:37 500<br>1:10 000<br>1:10 000     | 4 June 2010             |
| Aus 169<br>Edition 1 | Australia - Tasmania - Plans in Tasmania (Sheet 3)<br>Plans:<br>Coles Bay<br>Blackman Bay<br>Georges Bay<br>Schouten Passage | <br><br>1:15 000<br>1:25 000<br>1:25 000<br>1:75 000 | 21 January 2005         |

**Charts withdrawn without replacement**

| <i>Chart</i>                | <i>Title</i>  | <i>Scale</i>   | <i>Publication Date</i> |
|-----------------------------|---|--|-------------------------|
| Aus 170<br><b>Edition 1</b> | Australia - Tasmania - Mercury Passage  | 1:37 500   | 13 October 2006         |
| Aus 172<br><b>Edition 1</b> | Australia - Tasmania - Port of Hobart<br>Plans:<br>Sullivans Cove<br>Bowen Bridge   | 1:10 000<br><br>1:5 000<br>1:10 000                              | 2 September 2005        |
| Aus 174<br><b>Edition 1</b> | Australia - Tasmania - Plans in Tasmania<br>(Sheet 4)<br>Plans:<br>Port Huon<br>North West Bay<br>Port Arthur<br>Recherche Bay<br>Southport | <br><br>1:12 500<br>1:25 000<br>1:25 000<br>1:25 000<br>1:25 000 | 6 June 2008             |
| Aus 175<br><b>Edition 1</b> | Australia - Tasmania - Spring Bay including<br>Triabunna  | 1:10 000   | 28 March 2008           |

**Chart permanently withdrawn**

Charts listed above as withdrawn no longer meet chart carriage requirements and should be marked as "superseded" and replaced with the new chart/ new edition listed prior to passage through the area covered by the new chart.

When placing orders with a chart agent between notice of forthcoming edition and its publication, mariners should advise whether their order pertains to the current edition or the new edition.

For further details refer to the AHO website at [www.hydro.gov.au](http://www.hydro.gov.au) for new edition and new chart stock arrival information.

**625 AUSTRALIA - Products - New Charts and New Editions to be published shortly**

Australian Hydrographic Office

**New Charts to be published shortly**

| <i>Chart</i> | <i>Title</i> | <i>Scale</i> | <i>Remarks</i> |
|--------------|--------------|--------------|----------------|
| NIL          |              |              |                |

**New Editions to be published shortly**

| <i>Chart</i> | <i>Title</i>  | <i>Scale</i> | <i>Remarks</i>   |
|--------------|---|--------------|--|
| Aus 255      | Australia - East Coast - Queensland - Approaches to Abbot Point | 1:25 000     | New edition with general updating throughout; including the removal of plan Abbot Point Wharf. |

**Charts to be withdrawn without replacement 6 August 2021**

| <i>Chart</i>                | <i>Title</i>  | <i>Scale</i>                             | <i>Publication Date</i> |
|-----------------------------|---|--|-------------------------|
| Aus 13<br><b>Edition 1</b>  | Australia - North Coast - Plans in Northern Territory (Sheet 1)<br>Plans:<br>Bing Bong<br>Bickerton Island<br>Port Langdon      | <br><br>1:12 500<br>1:75 000<br>1:75 000 | 17 May 2002             |
| Aus 32<br><b>Edition 4</b>  | Australia - North Coast - Western Australia - Cambridge Gulf<br>Plans:<br>Wyndham Wharf<br>Approaches to Wyndham Wharf          | <br>1:75 000<br><br>1:7 500<br>1:37 500  | 19 April 2019           |
| Aus 49<br><b>Edition 1</b>  | Australia - North West Coast - Western Australia - Plans in Western Australia (Sheet 2)<br>Plans:<br>Beagle Bay<br>Lagrange Bay | <br><br>1:50 000<br>1:50 000             | 20 November 2009        |
| Aus 269<br><b>Edition 1</b> | Australia - East Coast - Queensland - Plans of Airlie Beach and Shute Harbour<br>Plans:<br>Airlie Beach<br>Shute Harbour        | <br><br>1:15 000<br>1:15 000             | 8 April 2016            |
| Aus 726<br><b>Edition 4</b> | Australia - North Coast - Western Australia - Approaches to Cambridge Gulf  | 1:150 000                                | 18 April 2003           |

**626 AUSTRALIA - QUEENSLAND - Cape Bowling Green - Light buoy**

Former Notice - 595(T)/2021 is cancelled

Maritime Safety Queensland Notice 271/2021

**Aus 827 [144/2021]**

|      |            |              |               |
|------|------------|--------------|---------------|
| Move | light buoy | 19° 17'.87 S | 147° 22'.28 E |
|      | to         | 19° 17'.86 S | 147° 22'.65 E |

**627 AUSTRALIA - QUEENSLAND - Karumba - Light buoy**

Maritime Safety Queensland Notice 268/2021

**Aus 6 [426/2021]**

|      |            |               |                |
|------|------------|---------------|----------------|
| Move | light buoy | 17° 26'.64 S  | 140° 44'.99 E  |
|      | to         | 17° 26'.565 S | 140° 44'.916 E |

**628 AUSTRALIA - QUEENSLAND - Moreton Bay - Rous Channel - Nav aids**

Former Notices - 489(T)/2019, 198(T)/2021 are cancelled  
Maritime Safety Queensland

**Aus 236 [271/2021]**

Insert accompanying block 27° 23'.8 S 153° 23'.5 E

**629 AUSTRALIA - SOUTH AUSTRALIA - Gulf St Vincent - Port Gawler - Light beacon**

Department for Infrastructure and Transport SA Notice 13/2021

**Aus 781 [317/2021]**

Insert light beacon, Fl.3s 34° 40'.83 S 138° 25'.98 E

**630 AUSTRALIA - SOUTH AUSTRALIA - Yarraville Shoals - Recommended track**

Hydro Survey

**Aus 136 [NE 19/3/2021]**

Amend legend to 040° - 220° 33° 10'.5 S 137° 37'.9 E

**Aus 485 [276/2021]**

Amend legend to 040° - 220° 33° 12'.7 S 137° 36'.8 E

**Aus 778 [242/2021]**

Amend legend to 040° - 220° 33° 11'.2 S 137° 37'.1 E

**Aus 778 (Yarraville Shoals) [242/2021]**

Amend legend to 040° - 220° 33° 11'.43 S 137° 36'.98 E  
legend to 040° - 220° 33° 14'.84 S 137° 33'.54 E

**631 AUSTRALIA - VICTORIA - Corner Inlet - Light buoy**

Gippsland Ports Notice 222/2021

**Aus 181 [554/2021]**

Amend light buoy to Fl.R. 4s No4 38° 48'.1 S 146° 30'.1 E

**632 AUSTRALIA - VICTORIA - Port Phillip - Geelong - North Channel - Beacon**

Australian Hydrographic Office

**Aus 157 [366/2021]**

Move beacon to 38° 05'.58 S 144° 25'.21 E  
38° 05'.579 S 144° 25'.161 E

**633 AUSTRALIA - VICTORIA - Toora Channel - Light beacons**

Gippsland Ports Notice 212/2021

**Aus 181 [631/2021]**

Amend light beacon to Fl.R. 4s No8 38° 43'.6 S 146° 22'.5 E  
light beacon to Fl.G. 4s No7 38° 43'.8 S 146° 23'.0 E  
light beacon to Fl.R. 4s No6 38° 43'.9 S 146° 22'.8 E  
light beacon to Fl.G. 4s No5 38° 44'.2 S 146° 23'.4 E  
light beacon to Fl.R. 4s No4 38° 44'.4 S 146° 23'.1 E  
light beacon to Fl.G. 4s No3 38° 44'.5 S 146° 23'.8 E  
light beacon to Fl.G. 4s No1 38° 44'.6 S 146° 24'.3 E  
light beacon to Fl.R. 4s No2 38° 44'.9 S 146° 23'.8 E



**634 AUSTRALIA - VICTORIA - Western Port - Chart withdrawn; chart limits; chart note; legends; ZOC diagram**

Australian Hydrographic Office

Note: position of existing chart notes may vary on certain charts.

**Aus 487 [323/2021]**

|        |   |             |              |
|--------|---|-------------|--------------|
| Delete | magenta limits with legend, Aus 150, centred on | 38° 18'.0 S | 145° 53'.0 E |
|        | magenta limits with legend, Aus 150, centred on | 38° 25'.0 S | 145° 13'.0 E |

**Aus 788 [483/2020]**

|        |   |             |              |
|--------|---|-------------|--------------|
| Delete | magenta limits with legend, Aus 150, centred on | 38° 21'.6 S | 143° 34'.0 E |
|        | magenta limits with legend, Aus 150, centred on | 38° 26'.0 S | 144° 49'.0 E |

**Aus 801 [547/2020]**

|        |  |             |              |
|--------|--|-------------|--------------|
| Insert | accompanying ZOC diagram                                     | 38° 28'.0 S | 145° 44'.0 E |
|        | accompanying block A   | 38° 30'.3 S | 145° 05'.2 E |
|        | accompanying block B   | 38° 30'.3 S | 145° 19'.1 E |
|        | accompanying chart note, ELECTRONIC NAVIGATIONAL CHART (ENC) | 38° 40'.0 S | 145° 59'.5 E |

|        |   |             |              |
|--------|---|-------------|--------------|
| Delete | magenta limits with legend, Aus 150, centred on | 38° 32'.0 S | 145° 12'.0 E |
|--------|---|-------------|--------------|

**635 AUSTRALIA - VICTORIA - Western Port - North Arm to Gentle Annie Channel - Buoys**

Parks Victoria Notice 126/2021, 127/2021

**Aus 151 [322/2021]**

|         |  |              |               |
|---------|--|--------------|---------------|
| Replace | beacon with starboard lateral conical buoy, No5, without topmark | 38° 18'.45 S | 145° 14'.85 E |
|---------|--|--------------|---------------|

**Aus 151 (Continuation of Western Port) [322/2021]**

|      |      |               |                |
|------|------|---------------|----------------|
| Move | buoy | 38° 14'.22 S  | 145° 20'.85 E  |
|      | to   | 38° 14'.266 S | 145° 20'.843 E |

|        |                         |              |               |
|--------|-------------------------|--------------|---------------|
| Delete | depth, 4 <sub>6</sub> m | 38° 14'.28 S | 145° 20'.83 E |
|--------|-------------------------|--------------|---------------|

**636 AUSTRALIA - TASMANIA - Recherche Bay to Georges Bay - Charts withdrawn; chart limits; chart notes; legends; ZOC diagram; nav aids; pilot boarding place; entry prohibited areas**

Australian Hydrographic Office

*Note:* position of existing chart notes may vary on certain charts.

**Aus 766 [325/2021]**

|        |  |              |               |
|--------|--|--------------|---------------|
| Insert | entry prohibited area, between                               | 42° 35'.48 S | 147° 59'.28 E |
|        |  | 42° 36'.42 S | 147° 58'.56 E |
|        |  | 42° 36'.56 S | 147° 58'.87 E |
|        |  | 42° 35'.62 S | 147° 59'.58 E |
|        |  | 42° 35'.48 S | 147° 59'.28 E |
|        | accompanying chart note, ELECTRONIC NAVIGATIONAL CHART (ENC) | 41° 42'.8 S  | 148° 00'.8 E  |
|        | accompanying ZOC diagram                                     | 41° 50'.0 S  | 148° 03'.5 E  |
|        | magenta legend, <i>ENC (see Note)</i> , centred on           | 42° 08'.3 S  | 148° 15'.5 E  |
|        | magenta legend, <i>ENC (see Note)</i> , centred on           | 42° 16'.0 S  | 148° 24'.0 E  |
|        | legend, <i>Mimosa Bank</i> , centred on                      | 42° 26'.17 S | 148° 02'.19 E |
|        | magenta legend, <i>ENC (see Note)</i> , centred on           | 42° 27'.7 S  | 148° 04'.6 E  |
|        | legend, <i>Fanella Bank</i> , centred on                     | 42° 29'.71 S | 148° 03'.04 E |
|        | legend, <i>Sloppy Weather Bank</i> , centred on              | 42° 30'.93 S | 148° 04'.68 E |
| Delete | chart note, OMISSIONS FROM CHART                             | 41° 40'.2 S  | 148° 01'.0 E  |
|        | magenta limits with legend, Aus 169, centred on              | 42° 08'.0 S  | 148° 17'.0 E  |
|        | magenta limits with legend, Aus 169, centred on              | 42° 17'.0 S  | 148° 15'.0 E  |
|        | magenta limits with legend, Aus 170, centred on              | 42° 32'.0 S  | 148° 04'.0 E  |
|        | pilot boarding place, centred on                             | 42° 33'.8 S  | 147° 56'.6 E  |

**Aus 767 [326/2021]**

|        |  |             |              |
|--------|--|-------------|--------------|
| Insert | accompanying chart note, ELECTRONIC NAVIGATIONAL CHART (ENC) | 40° 56'.0 S | 149° 04'.0 E |
|        | accompanying block   | 41° 17'.0 S | 148° 18'.9 E |
|        | accompanying ZOC diagram                                     | 41° 39'.5 S | 149° 05'.5 E |
| Delete | chart note, OMISSIONS FROM CHART                             | 40° 50'.0 S | 149° 04'.0 E |

**Aus 796 [15/2021]**

|        |  |             |              |
|--------|--|-------------|--------------|
| Insert | accompanying block   | 42° 52'.0 S | 147° 52'.0 E |
|        | magenta legend, <i>ENC (see Note)</i> , centred on           | 43° 14'.0 S | 147° 52'.5 E |
|        | accompanying ZOC diagram                                     | 43° 52'.0 S | 147° 58'.0 E |
|        | accompanying chart note, ESTUARY AND RIVER ENTRANCES         | 43° 55'.3 S | 147° 50'.5 E |
|        | accompanying chart note, ELECTRONIC NAVIGATIONAL CHART (ENC) | 43° 58'.0 S | 147° 50'.5 E |
| Delete | magenta limits with legend, Aus 170, centred on              | 42° 46'.5 S | 148° 00'.0 E |
|        | magenta limits with legend, Aus 172, centred on              | 42° 52'.0 S | 147° 20'.5 E |
|        | magenta limits with legend, Aus 174, centred on              | 43° 10'.0 S | 147° 52'.0 E |

**Aus 797 [325/2021]**

|        |  |             |              |
|--------|--|-------------|--------------|
| Insert | accompanying block A   | 42° 31'.9 S | 148° 00'.3 E |
|        | accompanying chart note, ESTUARY AND RIVER ENTRANCES         | 42° 35'.2 S | 148° 40'.8 E |
|        | accompanying chart note, ELECTRONIC NAVIGATIONAL CHART (ENC) | 42° 36'.4 S | 148° 46'.3 E |
|        | accompanying block B   | 42° 51'.5 S | 147° 54'.0 E |
|        | magenta legend, <i>ENC (see Note)</i> , centred on           | 43° 14'.0 S | 147° 52'.5 E |
|        | accompanying ZOC diagram                                     | 43° 28'.0 S | 148° 45'.5 E |
| Delete | magenta limits with legend, Aus 170, centred on              | 42° 36'.0 S | 148° 02'.0 E |
|        | magenta limits with legend, Aus 174, centred on              | 43° 10'.0 S | 147° 52'.0 E |

**637(T)/2021 AUSTRALIA - NEW SOUTH WALES - Twofold Bay - Munganno Point - Debris removed**

*Former Notice* - 966(T)/2016 is cancelled  
Port Authority of New South Wales

Cancel this notice on receipt.

**Chart formerly affected - Aus 192**

**638(T)/2021 AUSTRALIA - QUEENSLAND - Abbot Point to Hydrographers Passage - Survey operations completed**

*Former Notice* - 864(T)/2020 is cancelled  
iXblue Pty Ltd

Cancel this notice on receipt.

**Chart formerly affected - Aus 251 - Aus 255 - Aus 821 - Aus 824 - Aus 825 - Aus 826**

**639(T)/2021 AUSTRALIA - QUEENSLAND - Bowen - Port Denison - Light buoy off station**

Maritime Safety Queensland Notice 260(T)/2021

The starboard lateral light buoy, *Fl.G.2·5s* (20° 01'.79 S 148° 16'.04 E), is off station.

**Chart temporarily affected - Aus 268**

**640(T)/2021 AUSTRALIA - QUEENSLAND - Bowen - Harbour works completed**

*Former Notices* - 492(T)/2018, 1011(T)/2019 are cancelled  
Maritime Safety Queensland Notice 198(T)/2018, Notice 418(T)/2019

Cancel this notice on receipt.

**Chart formerly affected - Aus 268 - Aus 825 - Aus 826**

**641(T)/2021 AUSTRALIA - QUEENSLAND - Goods Island - Lights altered**

Australian Maritime Safety Authority

The rear leading light, *Fl.2·5s 105m 14M* (10°33'.91 S 142°09'.13 E) has been temporarily altered to *Fl.2·5s 105m 12M*.

The front leading light, *Fl.WR.2·5s 8m 10/7M* (10°33'.65 S 142°09'.22 E) has been temporarily altered to *Fl.2·5s 8m 10M*.

**Chart temporarily affected - Aus 293 - Aus 296 - Aus 299 - Aus 700**

**642(T)/2021 AUSTRALIA - QUEENSLAND - Moreton Bay - Redland Bay - Scientific instrument**

Maritime Safety Queensland Notice 256/2021

A special light buoy, *Fl.Y.2·5s*, exists in position 27° 36'.92 S 153° 18'.85 E.

**Chart temporarily affected - Aus 236**

**643(T)/2021 PAPUA NEW GUINEA - Manubada Island to Padana Nahua Passage - Shoaling charted**

*Former Notice* - 499(P)/2018 is cancelled  
Australian Hydrographic Office , Novaco

Cancel this notice on receipt.

**Chart formerly affected - Aus 505 - Aus 621**

**644(T)/2021 PAPUA NEW GUINEA - Padana Nahua Passage to Bootless Inlet - Shoaling charted**

Former Notice - 226(P)/2017 is cancelled  
Australian Hydrographic Office , Novaco

Cancel this notice on receipt.

**Chart formerly affected - Aus 505 - Aus 621**

**645(T)/2021 AUSTRALIA - TORRES STRAIT - Talbot Islands to Deliverance Island - Obstructions removed**

Former Notice - 410(T)/2016 is cancelled  
Maritime Safety Queensland

Cancel this notice on receipt.

**Chart formerly affected - Aus 841 - Aus 842**

**646(T)/2021 AUSTRALIA - NORTHERN TERRITORY - Darwin - Fort Point - Harbour works**

Department of Primary Industry and Fisheries NT NTM 48(T)/2021

Vessel *NT Wiser* is conducting maintenance operations at Fort Hill Wharf (12° 28'.33 S 130° 50'.77 E). A 50m exclusion zone exists around the vessel.

Vessel will monitor VHF Ch 10.

Mariners are advised to navigate with caution in the area.

**Chart temporarily affected - Aus 25 - Aus 26**

**647(T)/2021 AUSTRALIA - WESTERN AUSTRALIA - Ashburton Island - Scientific instrument northwards**

Pilbara Ports Authority Notice A9(T)/2021

A subsurface scientific instrument, with a least depth of 11m, exists in position 21° 32'.43 S 114° 56'.01 E.

**Chart temporarily affected - Aus 64 - Aus 328 - Aus 743 - Aus 744**

**648(T)/2021 AUSTRALIA - WESTERN AUSTRALIA - Browse Island - Light buoy off station**

Shell Australia

The special light buoy, *Fl(5)Y.20s*, (13° 49'.11 S 123° 16'.80 E), is off station.

**Chart temporarily affected - Aus 319 - Aus 320**

**649(T)/2021 AUSTRALIA - WESTERN AUSTRALIA - Cape Preston - Scientific instruments**

Department of Transport WA Notice 82/2021

Special light buoys, *Fl.Y.5s*, exist in the following positions:

20° 49'.23 S 116° 11'.38 E

20° 49'.20 S 116° 11'.42 E

20° 49'.18 S 116° 11'.76 E

20° 49'.11 S 116° 12'.18 E.

**Chart temporarily affected - Aus 742 - Aus 743**

**650(T)/2021 AUSTRALIA - WESTERN AUSTRALIA - Carnarvon - Obstructions**

Department of Transport WA Notice 12/2021

The jetty (24° 52'.79 S 113° 37'.16 E) has been damaged and obstructions may exist in the area.

Mariners are advised to keep 50m clear of the jetty and to navigate with caution in the area.

**Chart temporarily affected - Aus 73**

**651(T)/2021 AUSTRALIA - WESTERN AUSTRALIA - Muiron Islands - Subsea operations northwestwards completed**  
*Former Notice* - 576(T)/2021 is cancelled  
 Santos

Cancel this notice on receipt.

**Chart formerly affected - Aus 328 - Aus 329 - Aus 744**

**652(T)/2021 AUSTRALIA - WESTERN AUSTRALIA - Muiron Islands - Drill rig northwestwards**  
*Former Notice* - 405(T)/2021 is cancelled  
 Santos

Drill rig *Valaris MS-1* is conducting drilling operations in position 21° 23'.21 S 114° 04'.60 E.

**Chart temporarily affected - Aus 328 - Aus 329 - Aus 744**

**653(T)/2021 AUSTRALIA - WESTERN AUSTRALIA - Onslow - Beadon Creek - Harbour works**  
 Department of Transport WA Notice 90(T)/2021

Vessels *Margaret* and *Beadon Creek* are conducting wharf extension operations in the vicinity of position 21° 38'.68 S 115° 07'.86 E. Special light buoys, *Fl. Y*, have been established around the works.

All vessels will display appropriate lights and shapes, and will monitor VHF Ch 16.

Mariners are advised to navigate with caution in the area.

**Chart temporarily affected - Aus 64**

**654(T)/2021 AUSTRALIA - WESTERN AUSTRALIA - Port Hedland - Anderson Point Wharf - Light buoy withdrawn**  
 Pilbara Ports Authority Notice PH 12(T)/2021

The special light buoy, *Fl. Y. 2s* (20° 19'.81 S 118° 35'.09 E), has been temporarily withdrawn.

**Chart temporarily affected - Aus 54**

**655(T)/2021 AUSTRALIA - SOUTH AUSTRALIA - Venus Bay - Lights unlit**  
 Department for Infrastructure and Transport SA Notice 19(T)/2021

The leading lights, *2F. Bu* (33° 13'.46 S 134° 39'.52 E), are unlit.

**Chart temporarily affected - Aus 342**

**656(T)/2021 AUSTRALIA - VICTORIA - Port Phillip - Wedge Spit - Light beacon unlit**  
 Parks Victoria Notice 225(T)/2021

The south cardinal light beacon, *VQ(6) + LFl. 10s* (38° 02'.03 S 144° 38'.36 E), is unlit.

**Chart temporarily affected - Aus 143 - Aus 157**

**657(T)/2021 AUSTRALIA - VICTORIA - Port Phillip - Sorrento Channel - Light beacon restored**  
*Former Notice* - 617(T)/2021 is cancelled  
 Parks Victoria Notice 220(T)/2021

Cancel this notice on receipt.

**Chart formerly affected - Aus 143 - Aus 150**

**658(T)/2021 AUSTRALIA - VICTORIA - Port Phillip - South Channel - Shoaling; virtual AIS**

Victorian Ports Corporation (Melbourne) Notice 122(T)/2021

Shoaling exists in the South Channel and is marked by a special virtual AIS as follows:

| <i>Position</i>            | <i>Remarks</i> |
|----------------------------|----------------|
| 38° 17'.72 S 144° 41'.54 E | TB3            |
| 38° 18'.08 S 144° 43'.47 E | TB4.           |

Vessels with draught greater than 13.5m are advised to navigate north of TB3 and either north or south of TB4.

Mariners are advised to navigate with caution in the area.

**Chart temporarily affected - Aus 143 - Aus 144 - Aus 788**

**659(T)/2021 AUSTRALIA - VICTORIA - Port Phillip - South Channel - Shoaling; virtual AIS**

*Former Notice* - 502(T)/2021 is cancelled

Victorian Ports Corporation (Melbourne) Notice 122(T)/2021

Cancel this notice on receipt.

**Chart formerly affected - Aus 143 - Aus 144 - Aus 150 - Aus 788**

**660(T)/2021 AUSTRALIA - VICTORIA - Western Port - Gentle Annie Channel - Buoy restored**

*Former Notice* - 1164(T)/2018 is cancelled

Parks Victoria Notice 126/2021

Cancel this notice on receipt.

**Chart formerly affected - Aus 150 - Aus 151**

**661(T)/2021 AUSTRALIA - VICTORIA - Western Port - North Arm - Beacon removed; buoy established**

*Former Notice* - 300(T)/2021 is cancelled

Parks Victoria Notice 127(T)/2021

Cancel this notice on receipt.

**Chart formerly affected - Aus 150 - Aus 151**

**662(T)/2021 AUSTRALIA - VICTORIA - Western Port - San Remo - Shoaling**

*Former Notice* - 92(T)/2019 is cancelled

Parks Victoria Notice 347(T)/2017

Cancel this notice on receipt.

**Chart formerly affected - Aus 150**

**663(T)/2021 AUSTRALIA - VICTORIA - Western Port - Crib Point - Exclusion zone; light buoys**

Maritime Safety Victoria Notice 202(T)/2021, 205(T)/2021

A 200m radius exclusion zone exists around position 38° 20'.48 S 145° 13'.45 E.

Special light buoys, *Fl.Y.5s*, exist in the following positions:

38° 20'.58 S 145° 13'.49 E  
 38° 20'.57 S 145° 13'.40 E  
 38° 20'.34 S 145° 13'.37 E  
 38° 20'.33 S 145° 13'.51 E.

**Chart temporarily affected - Aus 151**

**664(T)/2021 AUSTRALIA - VICTORIA - Western Port - Stony Point to Sandy Point - Shoaling**  
 Victorian Regional Channels Authority Notice 199/2019

Shoaling exists in the vicinity of the following positions:

| <i>Position</i>         | <i>Least depth</i> | <i>Remarks</i>                             |
|-------------------------|--------------------|--|
| 38°25'.5 S 145° 13'.8 E | 13.6m              | Extending up to 100m into shipping channel |
| 38°22'.8 S 145° 14'.7 E | 13.2m              | Extending up to 50m into shipping channel  |
| 38°21'.9 S 145° 14'.4 E | 13.5m              | Extending up to 40m into shipping channel  |
| 38°22'.1 S 145° 14'.3 E | 13.8m              | Extending up to 10m into shipping channel  |

Mariners are advised to navigate with caution in the area.

**Chart temporarily affected - Aus 151**

**665(T)/2021 AUSTRALIA - VICTORIA - Western Port - Hanns Inlet - Light beacons unlit**  
 HMAS Cerberus

The light beacons, *Fl.G.8s* (38° 23'.26 S 145° 13'.95 E) and *Fl.R.8s* (38° 23'.30 S 145° 13'.94 E) are unlit.

**Chart temporarily affected - Aus 151**

**666(T)/2021 AUSTRALIA - VICTORIA - Western Port - Crib Point - Exclusion zone; light buoys**  
*Former Notice - 620(T)/2021 is cancelled*  
 Maritime Safety Victoria Notice 202(T)/2021, 205(T)/2021

Cancel this notice on receipt.

**Chart formerly affected - Aus 150 - Aus 151**

**667(T)/2021 AUSTRALIA - VICTORIA - Western Port - Stony Point to Sandy Point - Shoaling**  
*Former Notice - 223(T)/2021 is cancelled*  
 Victorian Regional Channels Authority Notice 199/2019

Cancel this notice on receipt.

**Chart formerly affected - Aus 150 - Aus 151**

**668(T)/2021 AUSTRALIA - VICTORIA - Western Port - Hanns Inlet - Light beacons unlit**  
*Former Notice - 221(T)/2021 is cancelled*  
 HMAS Cerberus

Cancel this notice on receipt.

**Chart formerly affected - Aus 150 - Aus 151**

**669(T)/2021 AUSTRALIA - TASMANIA - Banks Strait - Survey operations completed**  
*Former Notice - 302(T)/2021 is cancelled*  
 iXblue Pty Ltd

Cancel this notice on receipt.

**Chart formerly affected - Aus 179 - Aus 487 - Aus 767 - Aus 798 - Aus 800**

**670(T)/2021 AUSTRALIA - TASMANIA - Bay of Fires - Beacon destroyed**  
 Marine and Safety Tasmania Notice M180/2021

The port lateral beacon (41° 03'.76 S 148° 17'.92 E) has been destroyed.

**Chart temporarily affected - Aus 767**

**671(T)/2021 AUSTRALIA - TASMANIA - Georges Bay - Beauty Bay - Wreck; chart withdrawn***Former Notice - 523(T)/2020 is cancelled*

Marine and Safety Tasmania Notice M93/2020

Cancel this notice on receipt.

**Chart formerly affected - Aus 169****672(T)/2021 AUSTRALIA - TASMANIA - Hobart - Macquarie Wharves - Harbour works***Former Notice - 582(T)/2021 is cancelled*

Marine and Safety Tasmania Notice M162/2021

Cancel this notice on receipt.

**Chart formerly affected - Aus 172****673(T)/2021 AUSTRALIA - TASMANIA - Maria Island - Scientific instruments**

Marine and Safety Tasmania

Subsurface scientific instruments exist on the seabed in the following positions:

42° 40'.08 S 147° 58'.04 E  
 42° 39'.99 S 147° 58'.60 E  
 42° 39'.91 S 147° 59'.16 E  
 42° 39'.82 S 147° 59'.72 E  
 42° 39'.74 S 148° 00'.28 E  
 42° 39'.08 S 148° 10'.40 E  
 42° 39'.28 S 148° 10'.92 E  
 42° 39'.48 S 148° 11'.44 E  
 42° 39'.68 S 148° 11'.96 E  
 42° 39'.88 S 148° 12'.49 E  
 42° 40'.08 S 148° 13'.01 E  
 42° 40'.28 S 148° 13'.53 E  
 42° 40'.48 S 148° 14'.05 E  
 42° 40'.68 S 148° 14'.57 E  
 42° 40'.88 S 148° 15'.10 E  
 42° 41'.08 S 148° 15'.62 E  
 42° 41'.28 S 148° 16'.14 E  
 42° 41'.48 S 148° 16'.66 E  
 42° 41'.68 S 148° 17'.18 E  
 42° 41'.88 S 148° 17'.71 E  
 42° 42'.08 S 148° 18'.23 E  
 42° 42'.28 S 148° 18'.75 E  
 42° 42'.48 S 148° 19'.27 E  
 42° 42'.68 S 148° 19'.79 E  
 42° 42'.87 S 148° 20'.32 E  
 42° 43'.07 S 148° 20'.84 E  
 42° 43'.26 S 148° 21'.26 E.

**Chart temporarily affected - Aus 766 - Aus 797****674(T)/2021 AUSTRALIA - TASMANIA - Maria Island - Scientific instruments***Former Notice - 747(T)/2019 is cancelled*

Marine and Safety Tasmania

Cancel this notice on receipt.

**Chart formerly affected - Aus 170 - Aus 766 - Aus 797****675(T)/2021 AUSTRALIA - TASMANIA - Marion Narrows - Light beacon restored***Former Notice - 621(T)/2021 is cancelled*

Marine and Safety Tasmania Notice M185(T)/2021

Cancel this notice on receipt.

**Chart formerly affected - Aus 169 - Aus 171**



**676(T)/2021 AUSTRALIA - TASMANIA - Norfolk Bay - Smooth Island - Light restored***Former Notice - 622(T)/2021 is cancelled*

Marine and Safety Tasmania Notice M184(T)/2021

Cancel this notice on receipt.

**Chart formerly affected - Aus 171 - Aus 796****677(T)/2021 AUSTRALIA - TASMANIA - North West Bay - Mooring area**

Marine and Safety Tasmania Notice M106/2021

A mooring area, marked by special light buoys, exists in an area bounded by the following positions:

43° 02'.75 S 147° 17'.91 E

43° 02'.66 S 147° 18'.04 E

43° 02'.74 S 147° 18'.15 E

43° 02'.82 S 147° 18'.00 E.

Mariners are advised to navigate with caution in the area.

**Chart temporarily affected - Aus 171****678(T)/2021 AUSTRALIA - TASMANIA - North West Bay - Mooring area***Former Notice - 404(T)/2020 is cancelled*

Marine and Safety Tasmania Notice M106/2021

Cancel this notice on receipt.

**Chart formerly affected - Aus 171 - Aus 174****679(T)/2021 AUSTRALIA - TASMANIA - River Derwent - Bellerive - Harbour works completed***Former Notice - 443(T)/2020 is cancelled*

Marine and Safety Tasmania Notice M081/2020

Cancel this notice on receipt.

**Chart formerly affected - Aus 172****680(T)/2021 AUSTRALIA - TASMANIA - River Derwent - Montagu Bay - Wreck salvaged***Former Notice - 505(T)/2018 is cancelled*

Marine and Safety Tasmania Notice M98/2018

Cancel this notice on receipt.

**Chart formerly affected - Aus 172**

II

**HYDROGRAPHIC REPORTS**

NIL

*To accompany Australian Notice to Mariners 634/2021*

**ELECTRONIC NAVIGATIONAL CHART (ENC)**

Larger scale ENC content exists in this area. When using electronic navigation systems, certain vessels (e.g. restricted by depth or size) may benefit from the additional level of detail shown in the largest scale ENC product available.

*Note for chart Aus 801*

*To accompany Australian Notice to Mariners 636/2021*

**ELECTRONIC NAVIGATIONAL CHART (ENC)**

Larger scale ENC content exists in this area. When using electronic navigation systems, certain vessels (e.g. restricted by depth or size) may benefit from the additional level of detail shown in the largest scale ENC product available.

*Note for chart Aus 767*

*To accompany Australian Notice to Mariners 636/2021*

**ELECTRONIC NAVIGATIONAL CHART (ENC)**

Larger scale ENC content exists in this area. When using electronic navigation systems, certain vessels (e.g. restricted by depth or size) may benefit from the additional level of detail shown in the largest scale ENC product available.

*Note for chart Aus 796*

*To accompany Australian Notice to Mariners 636/2021*

**ELECTRONIC NAVIGATIONAL CHART (ENC)**

Larger scale ENC content exists in this area. When using electronic navigation systems, certain vessels (e.g. restricted by depth or size) may benefit from the additional level of detail shown in the largest scale ENC product available.

*Note for chart Aus 797*

*To accompany Australian Notice to Mariners 636/2021*

**ELECTRONIC NAVIGATIONAL CHART (ENC)**

Larger scale ENC content exists in this area. When using electronic navigation systems, certain vessels (e.g. restricted by depth or size) may benefit from the additional level of detail shown in the largest scale ENC product available.

*Note for chart Aus 766*

*To accompany Australian Notice to Mariners 636/2021*

**ESTUARY AND RIVER ENTRANCES**

The crossing of coastal bars and entry to rivers and estuaries is potentially dangerous. Bars and entrances are dynamic in nature, hence the depth and preferred approach may vary. Leading beacons and other navigational aids may not always indicate the best approach. If mariners are unsure of the condition at a particular bar or entrance, local information should be sought prior to crossing.

*Note for chart Aus 796*

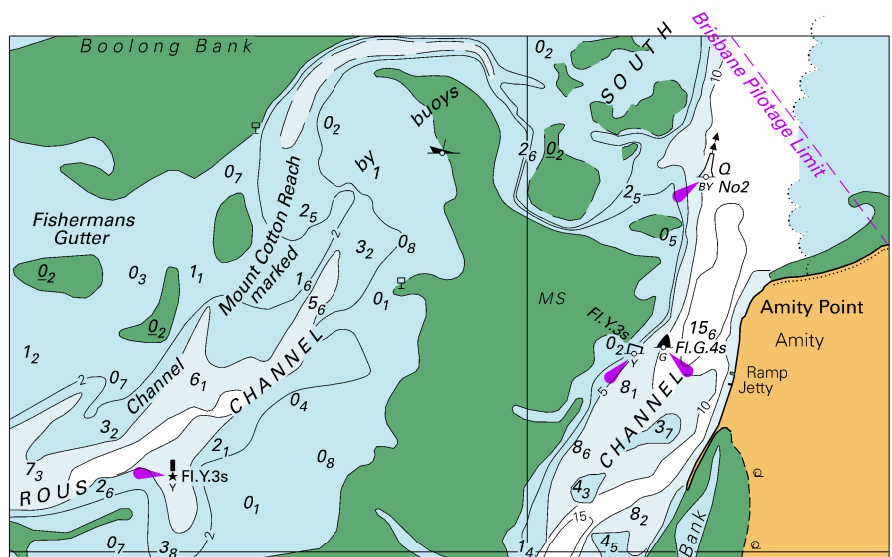
*To accompany Australian Notice to Mariners 636/2021*

**ESTUARY AND RIVER ENTRANCES**

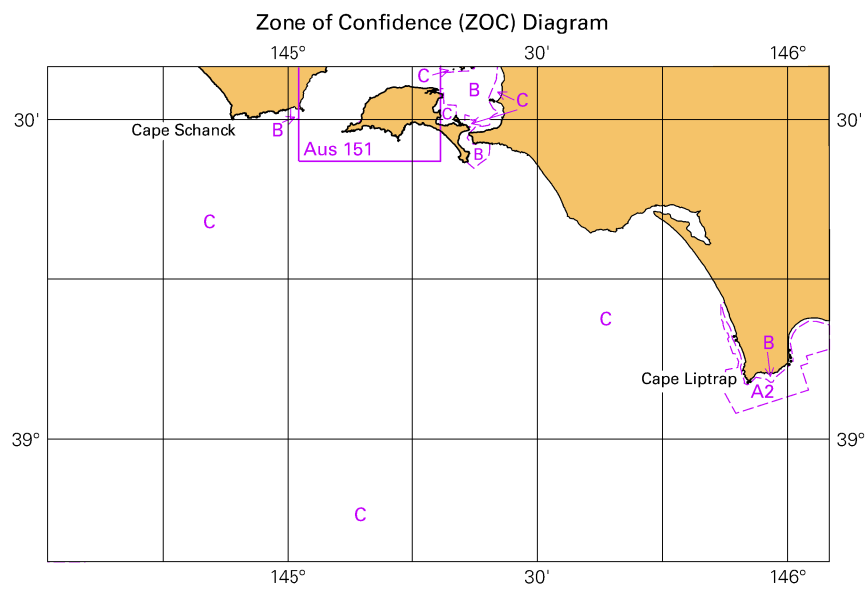
The crossing of coastal bars and entry to rivers and estuaries is potentially dangerous. Bars and entrances are dynamic in nature, hence the depth and preferred approach may vary. Leading beacons and other navigational aids may not always indicate the best approach. If mariners are unsure of the condition at a particular bar or entrance, local information should be sought prior to crossing.

*Note for chart Aus 797*

To accompany Australian Notice to Mariners 628/2021



*To accompany Australian Notice to Mariners 634/2021*

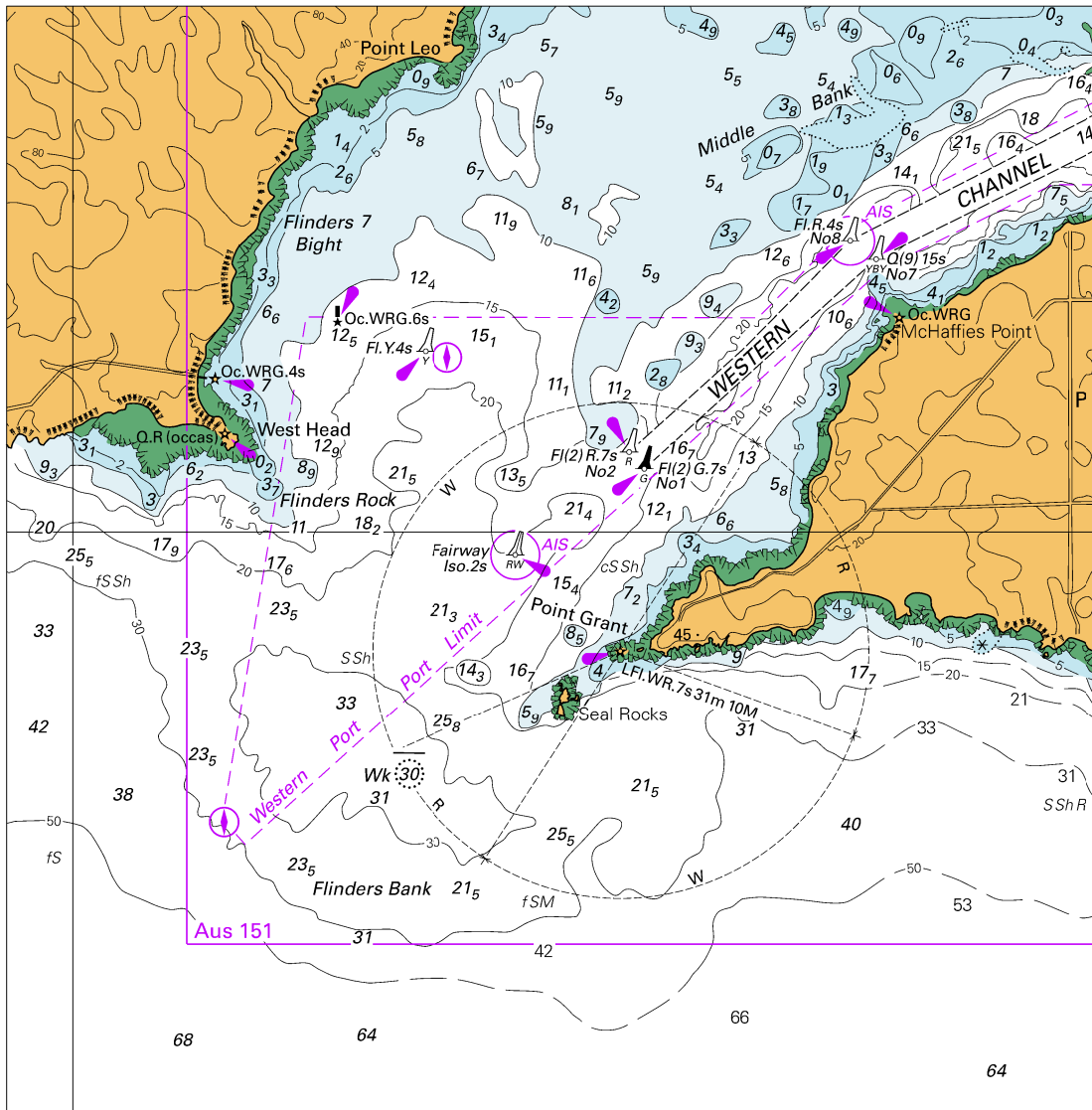


© Commonwealth of Australia 2021

*Block for chart Aus 801*

(103.3 x 65.4mm)

To accompany Australian Notice to Mariners 634/2021

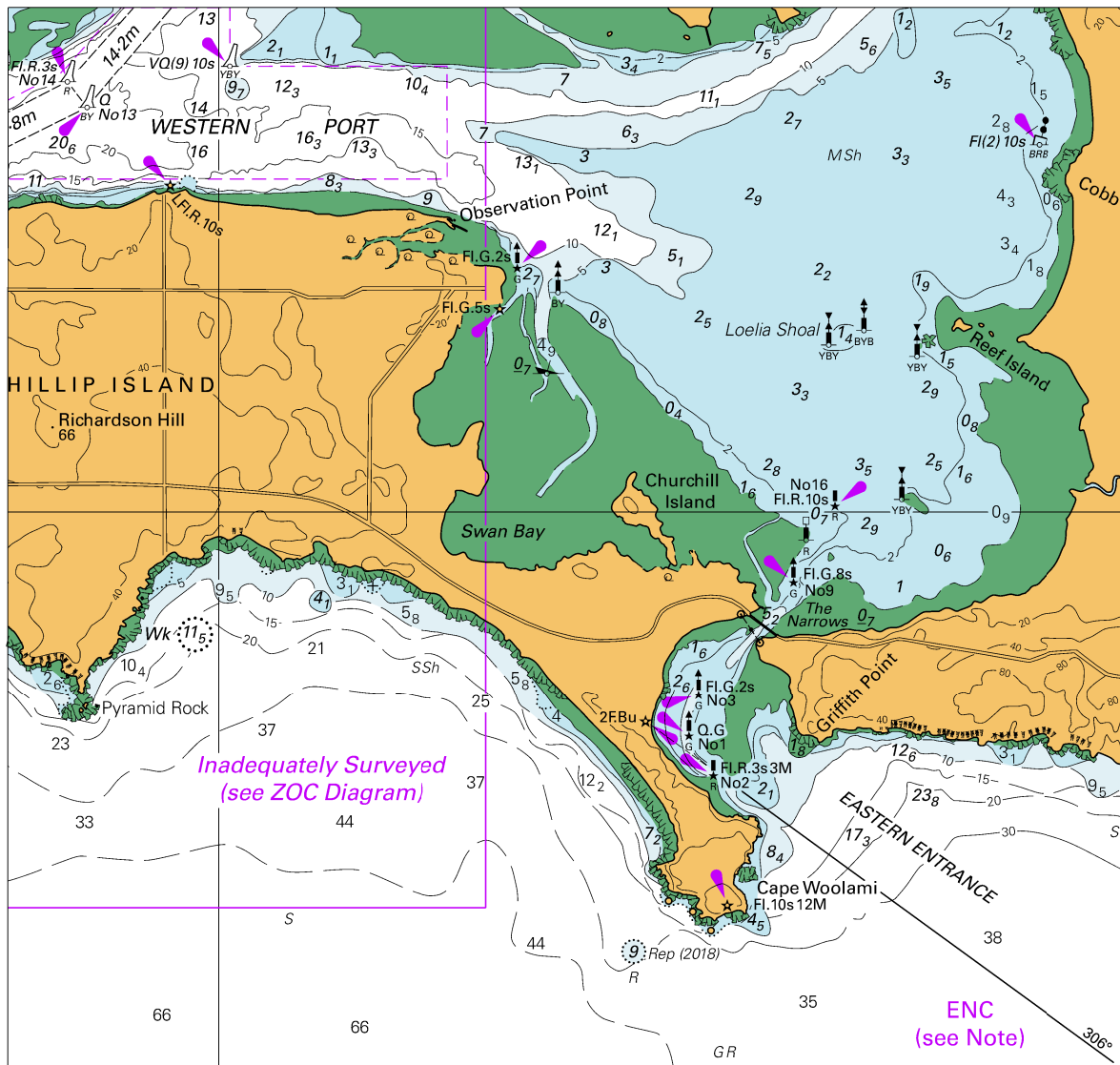


Block A for chart Aus 801

© Commonwealth of Australia 2021

(144.7 x 147.5mm)

To accompany Australian Notice to Mariners 634/2021



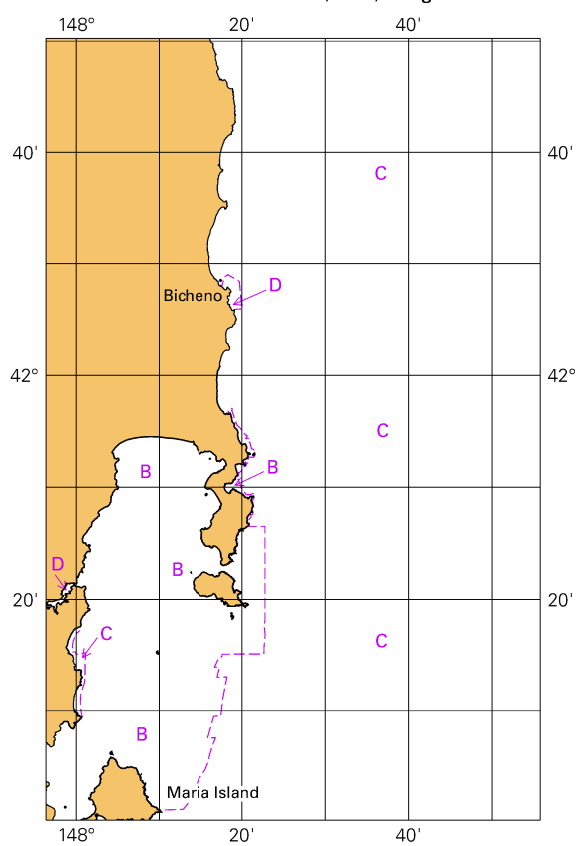
Block B for chart Aus 801

© Commonwealth of Australia 2021

(154.7 x 147.5mm)

*To accompany Australian Notice to Mariners 636/2021*

**Zone of Confidence (ZOC) Diagram**



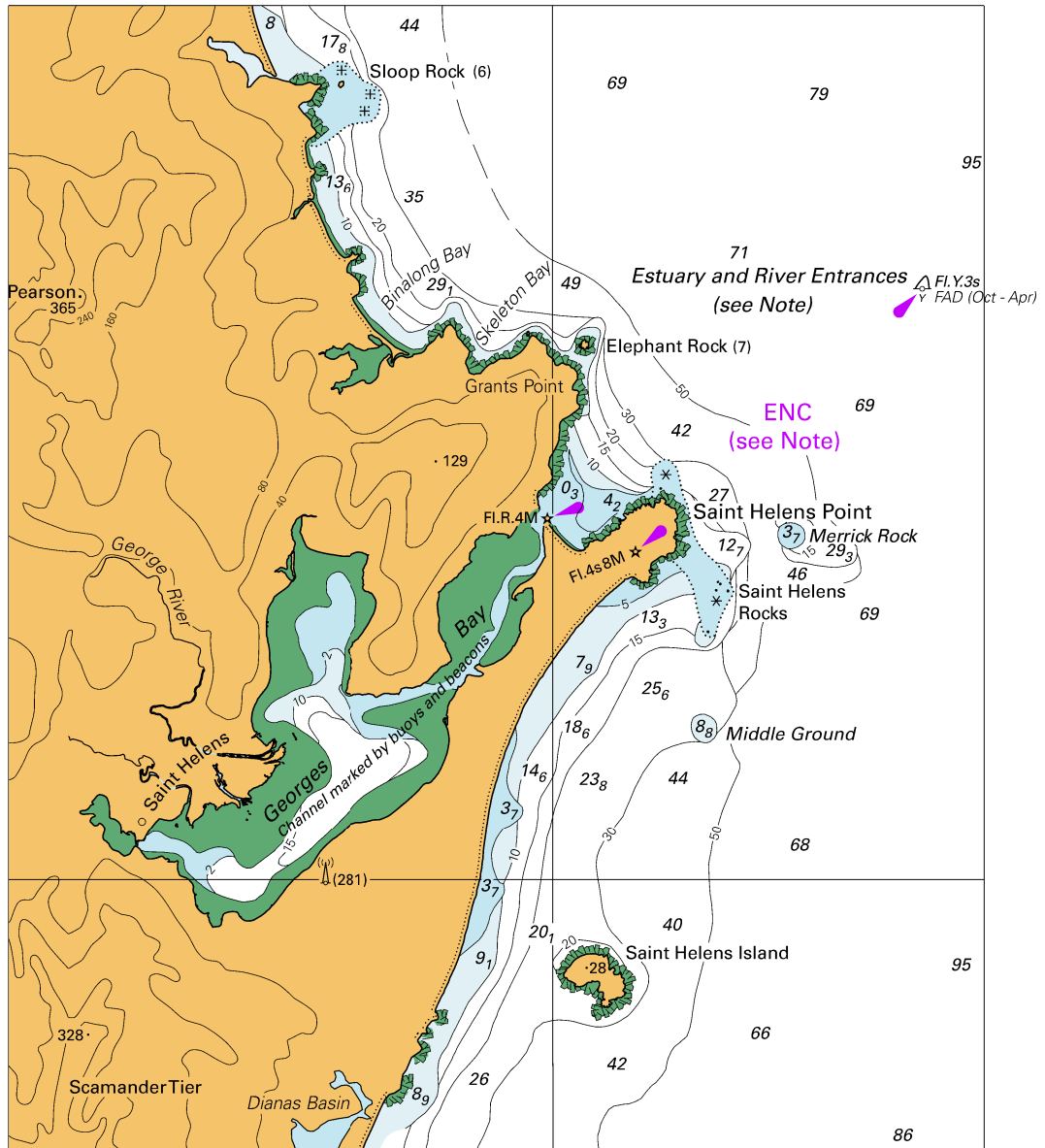
© Commonwealth of Australia 2021

**Block for chart Aus 766**

(65.3 x 103.3mm)



To accompany Australian Notice to Mariners 636/2021

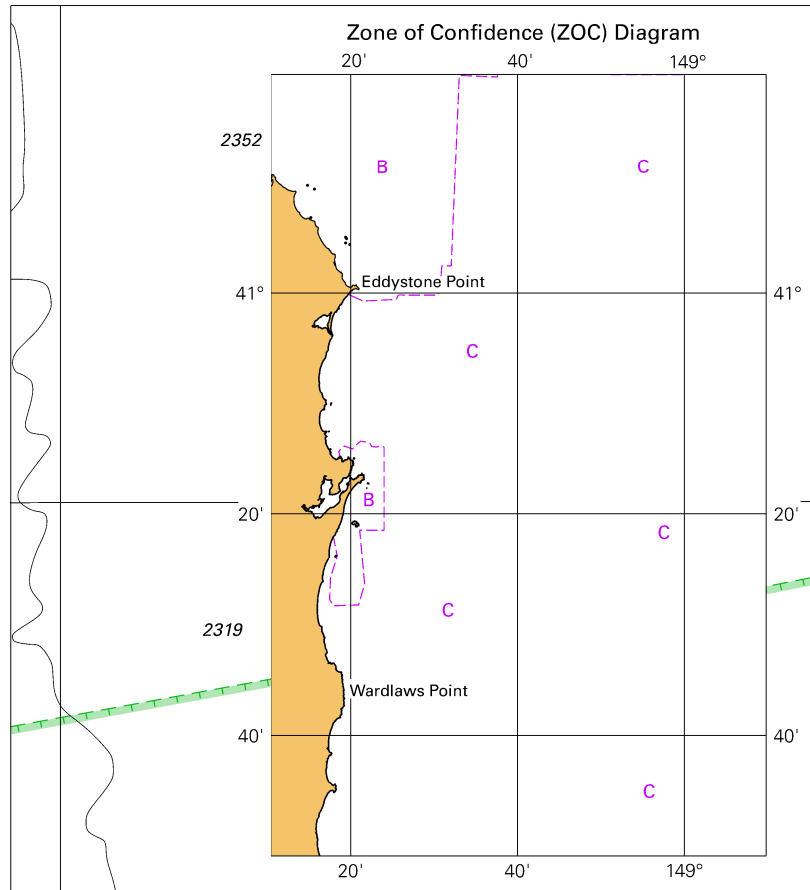


Block for chart Aus 767

© Commonwealth of Australia 2021

(132.9 x 155.8mm)

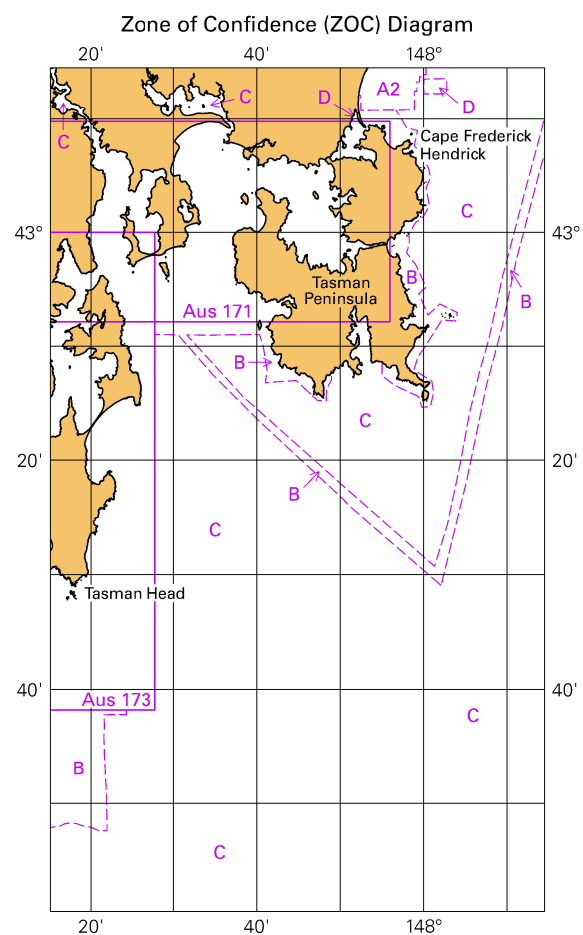
To accompany Australian Notice to Mariners 636/2021



Block for chart Aus 767 © Commonwealth of Australia 2021

(106.7 x 117.5mm)

To accompany Australian Notice to Mariners 636/2021

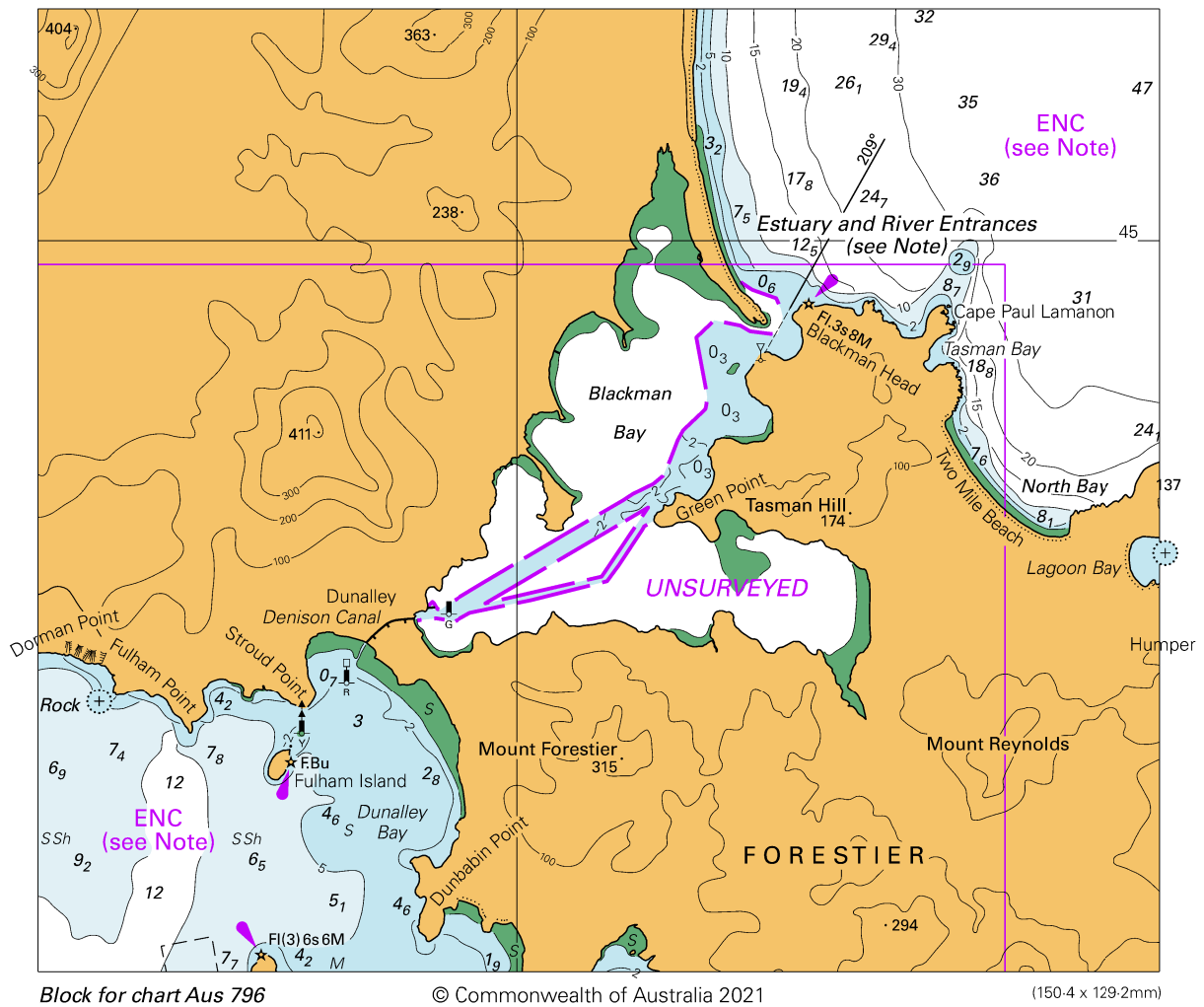


© Commonwealth of Australia 2021

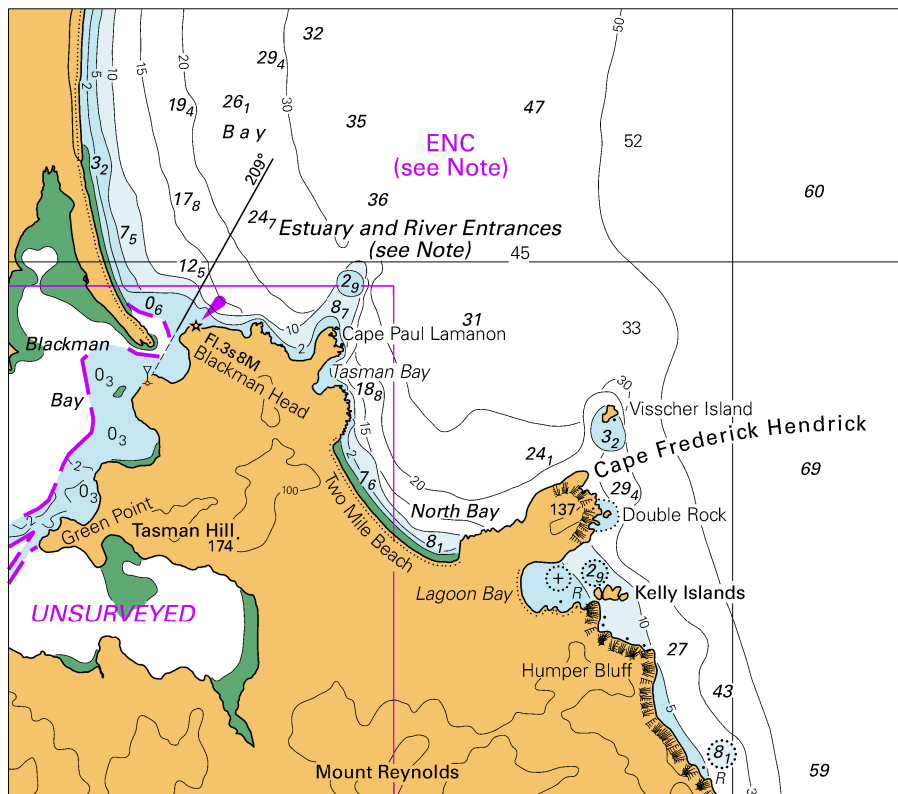
Block for chart Aus 796

(65.4 x 111.6mm)

To accompany Australian Notice to Mariners 636/2021



To accompany Australian Notice to Mariners 636/2021

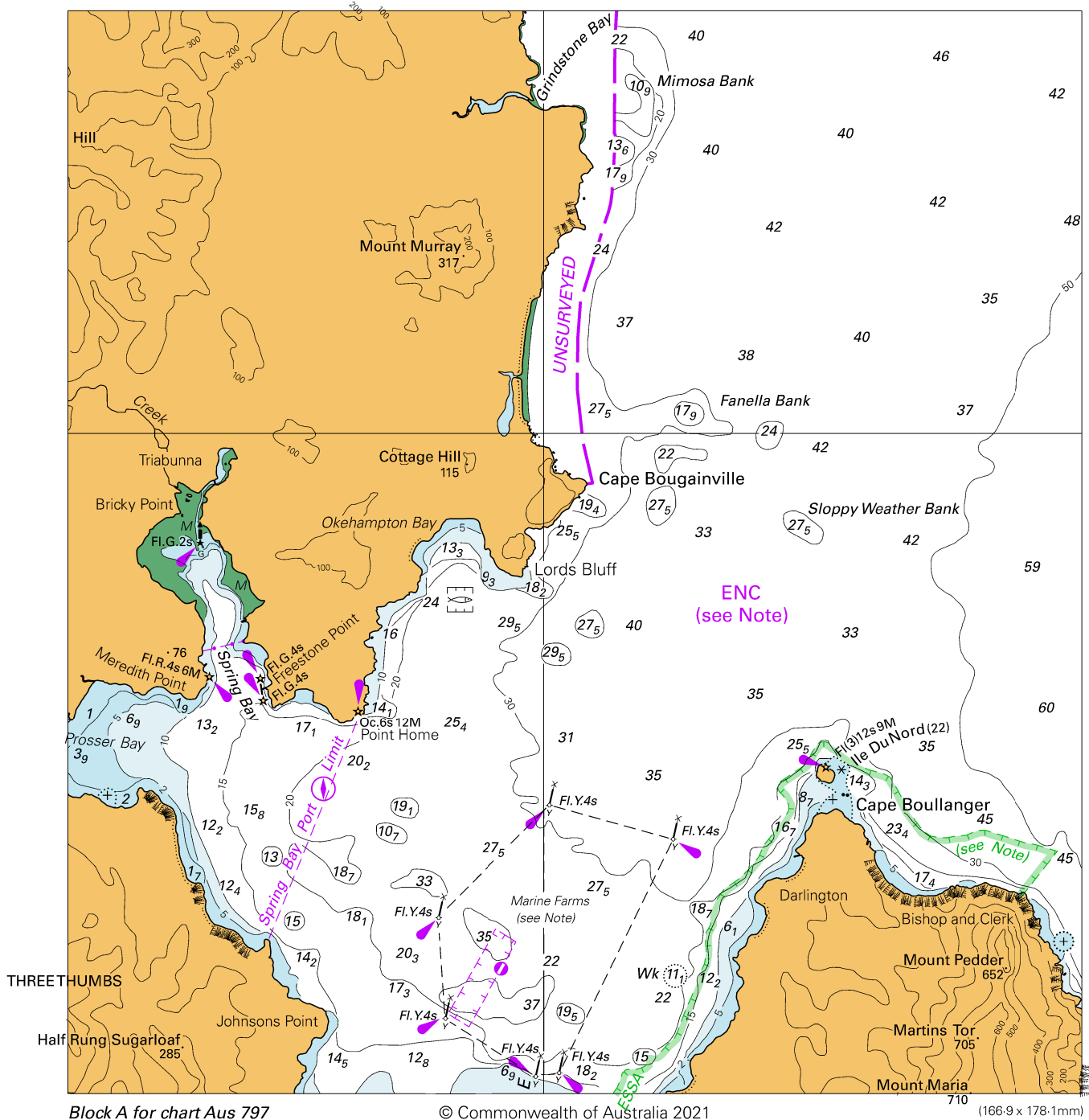


© Commonwealth of Australia 2021

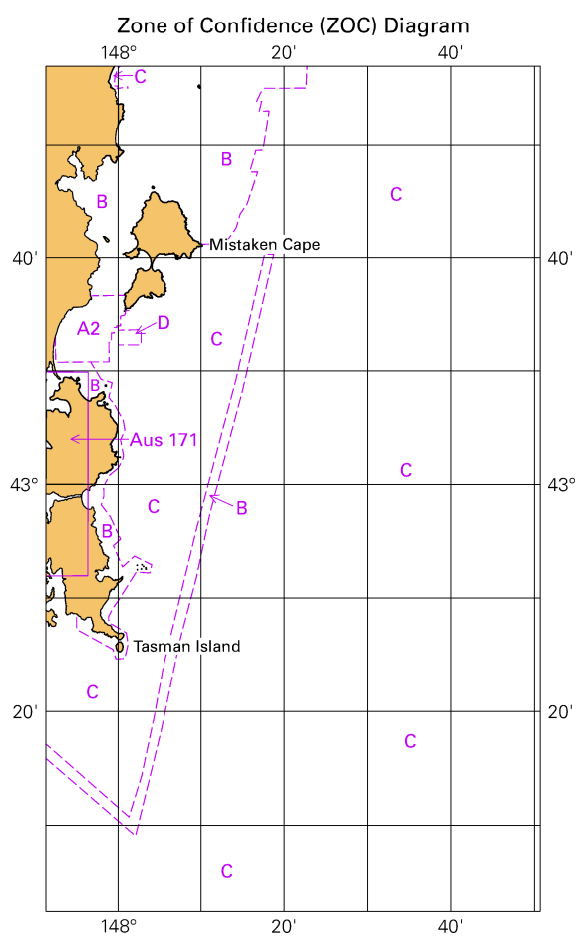
Block B for chart Aus 797

(119.2 x 104.1mm)

To accompany Australian Notice to Mariners 636/2021



To accompany Australian Notice to Mariners 636/2021



© Commonwealth of Australia 2021

Block for chart Aus 797

(65.4 x 111.7mm)