



AUSTRALIAN NOTICES TO MARINERS

Notices 583 - 623

**Including
List of Temporary and Preliminary Notices in force**

Published fortnightly by the Australian Hydrographic Office



Australian Notices to Mariners are the authority for correcting charts and publications published by the Australian Hydrographic Office covering Australia, Papua New Guinea, Solomon Islands, Australian Antarctic Territory and Timor-Leste.

Commodore S.T. DUNNE RAN
Hydrographer of Australia

SECTIONS.

- I. **Australian Notices to Mariners, including blocks and notes.**
- II. **Hydrographic Reports.**

SUPPLEMENTS.

- I. **Tracings**
 - II. **Cumulative List of Australian Notices to Mariners.**
 - III. **Cumulative List of Temporary and Preliminary Australian Notices to Mariners.**
 - IV. **Temporary and Preliminary Notices in force.**
-
-

© Commonwealth of Australia 2021

This work is copyright. Apart from any use permitted under the Copyright Act 1968, no part may be reproduced by any process, adapted, communicated or commercially exploited without prior written permission from The Commonwealth represented by the Australian Hydrographic Office.

IMPORTANT NOTICE

This edition of Notices to Mariners includes all significant information affecting AHO products which the AHO has become aware of since the last edition. All reasonable efforts have been made to ensure the accuracy and completeness of the information, including third party information, on which these updates are based. The AHO regards third parties from which it receives information as reliable, however the AHO cannot verify all such information and errors may therefore exist. The AHO does not accept liability for errors in third party information.

GENERAL INSTRUCTIONS

The substance of these notices should be inserted on the charts affected.

Bearings are referred to the true compass and are reckoned clockwise from North; those relating to lights are given as seen by an observer from seaward.

Positions quoted in notices relate to WGS84 which is the horizontal datum for all charts produced by the Australian Hydrographic Office.

The range quoted for a light is its nominal range.

Depths are with reference to the chart datum of each chart. Heights are above mean high water springs or mean higher high water, as appropriate.

The capital letter (P) or (T) after the number of any notice denotes a preliminary or temporary notice respectively, which are contained separately at the end of the permanent notices.

REPORTING OF DANGERS

Mariners are particularly requested to notify the AUSTRALIAN HYDROGRAPHIC OFFICE, Locked Bag 8801 Wollongong, NSW 2500 (e-mail datapcentre@hydro.gov.au or, alternatively by filling in and submitting the [Hydrographic Notes](#) forms located on the web site – www.hydro.gov.au), immediately on the discovery of new dangers or suspected dangers to navigation. For changes or defects in aids to navigation notify AusSAR (Fax 02-6230 6868 or email rccaus@amsa.gov.au).

AUTHORISED USE

Copies of Australian notices are available free of charge from the Australian Hydrographic Office (AHO) website (www.hydro.gov.au) and through the eNotices (email) service (www.hydro.gov.au/enotices/enotices.htm).

Individual Notices may be copied for the purpose of inserting Notice substance on official charts and publications. Paper copies may be printed by chart agents and distributed to customers on a cost recovery basis. Participating chart agents are listed on the AHO website as providing a 'Paper Notices to Mariners' service (www.hydro.gov.au/webapps/jsp/agents/agents-list.jsp). Copies of the notices may not be sold for profit without prior written agreement.

NUMERICAL INDEX OF NOTICES TO MARINERS

Edition No 14

Notices	Aus Chart, INT Chart, ENC Cell, AHP, BA Pubs
583	Products - New Charts, New Editions, Withdrawn Charts
584	Aus 13, 32, 150, 169, 170, 172, 173, 174, 175, 268, 726
585	Aus 222
586	Aus 816, 817, 818
587	Aus 50
588	Aus 32
589	Aus 802
590	Aus 357
591(T)	Aus 222
592(T)	Aus 207
593(T)	Aus 195
594(T)	Aus 195
595(T)	Aus 827
596(T)	Aus 249, 250, 823
597(T)	Aus 6
598(T)	Aus 814
599(T)	Aus 236
600(T)	Aus 235, 236, 814, 815
601(T)	Aus 143, 144
602(T)	Aus 294
603(T)	Aus 260, 367, 490, 822, 823
604(T)	Aus 64
605(T)	Aus 328
606(T)	Aus 328
607(T)	Aus 57, 60
608(P)	Aus 84
609(T)	Aus 328
610(T)	Aus 53, 54
611(T)	Aus 120, 122
612(T)	Aus 120
613(T)	Aus 120, 341
614(T)	Aus 181, 357
615(T)	Aus 155
616(T)	Aus 155
617(T)	Aus 143, 150
618(T)	Aus 155
619(T)	Aus 357, 487, 4601, 4644, INT 601, 644
620(T)	Aus 150, 151
621(T)	Aus 169, 171
622(T)	Aus 171, 796
623(T)	TEMPORARY AND PRELIMINARY NOTICES

NUMERICAL INDEX OF CHARTS AFFECTED

Edition No 14

Aus Chart	Notices	INT Chart	Notices
Aus 6	597(T)	INT 601	619(T)
Aus 13	584	INT 644	619(T)
Aus 32	584, 588		
Aus 50	587		
Aus 53	610(T)		
Aus 54	610(T)		
Aus 57	607(T)		
Aus 60	607(T)		
Aus 64	604(T)		
Aus 84	608(P)		
Aus 120	611(T), 612(T), 613(T)		
Aus 122	611(T)		
Aus 143	601(T), 617(T)		
Aus 144	601(T)		
Aus 150	584, 617(T), 620(T)		
Aus 151	620(T)		
Aus 155	615(T), 616(T), 618(T)		
Aus 169	584, 621(T)		
Aus 170	584		
Aus 171	621(T), 622(T)		
Aus 172	584		
Aus 173	584		
Aus 174	584		
Aus 175	584		
Aus 181	614(T)		
Aus 195	593(T), 594(T)		
Aus 207	592(T)		
Aus 222	585, 591(T)		
Aus 235	600(T)		
Aus 236	599(T), 600(T)		
Aus 249	596(T)		
Aus 250	596(T)		
Aus 260	603(T)		
Aus 268	584		
Aus 294	602(T)		
Aus 328	605(T), 606(T), 609(T)		
Aus 341	613(T)		
Aus 357	590, 614(T), 619(T)		
Aus 367	603(T)		
Aus 487	619(T)		
Aus 490	603(T)		
Aus 726	584		
Aus 796	622(T)		
Aus 802	589		
Aus 814	598(T), 600(T)		
Aus 815	600(T)		
Aus 816	586		
Aus 817	586		
Aus 818	586		
Aus 822	603(T)		
Aus 823	596(T), 603(T)		
Aus 827	595(T)		
Aus 4601	619(T)		
Aus 4644	619(T)		

583 AUSTRALIA - Products - New Charts, New Editions, Withdrawn Charts

Australian Hydrographic Office

New Charts

<i>Chart</i>	<i>Title and Geographical limits</i>	<i>Scale</i>	<i>Publication Date</i>	<i>Remarks</i>
NIL				

New Electronic Navigation Chart (Aus ENC)

<i>Cell Name</i>	<i>Title</i>	<i>Scale</i>	<i>Publication Date</i>	<i>Remarks</i>
PG410150	Papua New Guinea - North East Coast - Normanby Island to Goodenough Island		1 July 2021	AU410150 has been withdrawn.
PG411149	Papua New Guinea - Coral Sea - Table Bay to Ava Point		1 July 2021	AU411149 has been withdrawn.
PG410147	Papua New Guinea - South Coast - Port Moresby to Roundhill Entrance		1 July 2021	AU410147 has been withdrawn.

New Editions and Withdrawn Charts

<i>Chart</i>	<i>Title</i>	<i>Scale</i>	<i>Publication Date</i>	<i>Remarks</i>
NIL				

Chart permanently withdrawn

Charts listed above as withdrawn no longer meet chart carriage requirements and should be marked as "superseded" and replaced with the new chart/ new edition listed prior to passage through the area covered by the new chart.

When placing orders with a chart agent between notice of forthcoming edition and its publication, mariners should advise whether their order pertains to the current edition or the new edition.

For further details refer to the AHO website at www.hydro.gov.au for new edition and new chart stock arrival information.

584 AUSTRALIA - Products - New Charts and New Editions to be published shortly

Australian Hydrographic Office

New Charts to be published shortly

<i>Chart</i>	<i>Title</i>	<i>Scale</i>	<i>Remarks</i>
NIL			

New Editions to be published shortly

<i>Chart</i>	<i>Title</i>	<i>Scale</i>	<i>Remarks</i>
Aus 173	Australia - Tasmania - D'Entrecasteaux Channel	1:75 000	New edition with general updating throughout; including the removal of plan Little Oyster Cove.
Aus 268	Australia - East Coast - Queensland - Approaches to Bowen	1:37 500	New edition with general updating throughout; including the removal of plan Bowen.

Charts to be withdrawn without replacement 23 July 2021

<i>Chart</i>	<i>Title</i>	<i>Scale</i>	<i>Publication Date</i>
Aus 13 Edition 1	Australia - North Coast - Plans in Northern Territory (Sheet 1) Plans: Bing Bong Bickerton Island Port Langdon	1:12 500 1:75 000 1:75 000	17 May 2002
Aus 32 Edition 4	Australia - North Coast - Western Australia - Cambridge Gulf Plans: Wyndham Wharf Approaches to Wyndham Wharf	1:75 000 1:7 500 1:37 500	19 April 2019
Aus 150 Edition 2	Australia - South Coast - Victoria - Western Port Plans: Eastern Entrance to Western Port The Narrows Rhyll	1:75 000 1:37 500 1:10 000 1:10 000	4 June 2010
Aus 169 Edition 1	Australia - Tasmania - Plans in Tasmania (Sheet 3) Plans: Coles Bay Blackman Bay Georges Bay Schouten Passage	1:15 000 1:25 000 1:25 000 1:75 000	21 January 2005
Aus 170 Edition 1	Australia - Tasmania - Mercury Passage	1:37 500	13 October 2006
Aus 172 Edition 1	Australia - Tasmania - Port of Hobart Plans: Sullivans Cove Bowen Bridge	1:10 000 1:5 000 1:10 000	2 September 2005
Aus 174 Edition 1	Australia - Tasmania - Plans in Tasmania (Sheet 4) Plans: Port Huon North West Bay Port Arthur Recherche Bay Southport	1:12 500 1:25 000 1:25 000 1:25 000 1:25 000	6 June 2008

584 AUSTRALIA - Products - New Charts and New Editions to be published shortly

<i>Chart</i>	<i>Title</i>	<i>Scale</i>	<i>Publication Date</i>
Aus 175 Edition 1	Australia - Tasmania - Spring Bay including Triabunna	1:10 000	28 March 2008
Aus 726 Edition 4	Australia - North Coast - Western Australia - Approaches to Cambridge Gulf	1:150 000	18 April 2003

585 AUSTRALIA - NEW SOUTH WALES - Clarence River - Light buoys

Port Authority of New South Wales

Aus 222 [467/2021]

Insert	starboard lateral conical light buoy, <i>VQ.G</i> , with topmark	29° 22'.746 S	153° 17'.224 E
	port lateral cylindrical light buoy, <i>Fl.R.3s</i> , with topmark	29° 22'.873 S	153° 17'.666 E
	port lateral cylindrical light buoy, <i>Fl.R.3s</i> , with topmark	29° 23'.036 S	153° 18'.152 E
	starboard lateral conical light buoy, <i>VQ.G</i> , with topmark	29° 23'.053 S	153° 16'.952 E
	starboard lateral conical light buoy, <i>Fl.G.3s</i> , with topmark	29° 23'.193 S	153° 19'.281 E
	special conical light buoy, <i>VQ.Y</i> , with topmark	29° 23'.396 S	153° 20'.093 E
	port lateral cylindrical light buoy, <i>VQ.R</i> , with topmark	29° 23'.770 S	153° 20'.310 E
	port lateral cylindrical light buoy, <i>Fl.R.3s</i> , with topmark	29° 24'.105 S	153° 16'.988 E
	starboard lateral conical light buoy, <i>Fl.G.3s</i> , with topmark	29° 24'.156 S	153° 16'.848 E
Delete	depth, 4 _g	29° 22'.73 S	153° 17'.24 E
	depth, 3 ₄	29° 22'.87 S	153° 17'.66 E
	depth, 2 ₄	29° 23'.05 S	153° 18'.16 E

Aus 222 (Goodwood Island Wharf) [467/2021]

Insert	port lateral cylindrical light buoy, <i>Fl.R.3s</i> , with topmark	29° 23'.036 S	153° 18'.152 E
	starboard lateral conical light buoy, <i>Fl.G.3s</i> , with topmark	29° 23'.193 S	153° 19'.281 E

586 AUSTRALIA - QUEENSLAND - Hervey Bay - Light buoys withdrawn

Department of Agriculture and Fisheries QLD

Aus 816 [515/2021]

Delete	light buoy	24° 39'.5 S	153° 06'.0 E
--------	------------	-------------	--------------

Aus 817 [515/2021]

Delete	light buoy	24° 39'.5 S	153° 06'.0 E
	light buoy	24° 43'.0 S	153° 03'.0 E
	light buoy	25° 01'.0 S	152° 57'.0 E

Aus 818 [847/2020]

Delete	light buoy	24° 39'.5 S	153° 06'.0 E
	light buoy	24° 43'.0 S	153° 03'.0 E

587 AUSTRALIA - WESTERN AUSTRALIA - Broome - Anchorages

Kimberley Ports Authority

Aus 50 [989/2020]

Insert	anchor berth, desig <i>1CB</i> , with 300m radius swinging circle, centred on	17° 54'.79 S	122° 11'.08 E
	anchor berth, desig <i>2CB</i> , with 300m radius swinging circle, centred on	17° 55'.17 S	122° 10'.93 E
	anchor berth, desig <i>3CB</i> , with 300m radius swinging circle, centred on	17° 55'.56 S	122° 10'.78 E
Delete	depth, 14 ₃ m	17° 54'.8 S	122° 11'.1 E
	depth, 14 ₃ m	17° 55'.5 S	122° 10'.8 E
	anchorage, centred on	17° 56'.0 S	122° 09'.5 E
	anchorage, centred on	17° 56'.0 S	122° 10'.0 E
	anchorage, centred on	17° 56'.5 S	122° 09'.5 E
	anchorage, centred on	17° 56'.5 S	122° 10'.0 E

588 AUSTRALIA - WESTERN AUSTRALIA - Wyndham - Light buoy withdrawn

CGL Wyndham Port

Aus 32 (Approaches to Wyndham Wharf) [472/2021]

Delete light buoy

15° 27'.1 S

128° 05'.6 E

Aus 32 (Wyndham Wharf) [472/2021]

Delete light buoy

15° 27'.1 S

128° 05'.6 E

589 AUSTRALIA - VICTORIA - Kent Group - Deal Island - Lighthouse

Australian Hydrographic Office

Aus 802 [752/2020]Insert tower with legend, *LtHo (disused)*

39° 29'.65 S

147° 19'.35 E

590 AUSTRALIA - VICTORIA - Port Albert Entrance - Depths; nav aids

Gippsland Ports Notice 136/2021

Aus 357 [320/2021]

Insert accompanying block

38° 51'.0 S

146° 48'.0 E

591(T)/2021 AUSTRALIA - NEW SOUTH WALES - Clarence River - Light unlit
Port Authority of New South Wales Notice 4(T)/2021

The rear leading light, *F.Bu* (29° 22'.68 S 153° 16'.96 E), is unlit.

Mariners are advised to use the newly established lateral buoys to navigate in the area.

Chart temporarily affected - Aus 222

592(T)/2021 AUSTRALIA - NEW SOUTH WALES - Newcastle - Throsby Basin - Light relit
Former Notice - 705(T)/2020 is cancelled
Port Authority of New South Wales

Cancel this notice on receipt.

Chart formerly affected - Aus 207

593(T)/2021 AUSTRALIA - NEW SOUTH WALES - Port Kembla - Drilling operations
Port Authority of New South Wales

JUB *Sealift 1* and support vessels are conducting drilling operations in the vicinity of position 34° 28'.45 S 150° 54'.46 E.

Chart temporarily affected - Aus 195

594(T)/2021 AUSTRALIA - NEW SOUTH WALES - Port Kembla - Harbour works
Port Authority of New South Wales Notice 02/2021, 03/2021

Works associated with the construction of the LNG import facility are in progress at berth 101 (34° 27'.53 S 150° 53'.85 E).

A silt curtain, marked by special light buoys, has been established around the works in the following positions:

<i>Position</i>	<i>Remarks</i>
34° 27'.47 S 150° 53'.84 E	
34° 27'.48 S 150° 53'.83 E	special light buoy, Q. Y
34° 27'.49 S 150° 53'.81 E	
34° 27'.50 S 150° 53'.81 E	special light buoy, Q. Y
34° 27'.53 S 150° 53'.82 E	special light buoy, Q. Y
34° 27'.56 S 150° 53'.82 E	special light buoy, Q. Y
34° 27'.57 S 150° 53'.82 E	
34° 27'.60 S 150° 53'.83 E	special light buoy, Q. Y
34° 27'.61 S 150° 53'.87 E	special light buoy, Q. Y
34° 27'.62 S 150° 53'.89 E.	

Mariners are advised to navigate with caution in the area.

Chart temporarily affected - Aus 195

595(T)/2021 AUSTRALIA - QUEENSLAND - Cape Bowling Green - Light buoy off station
Maritime Safety Queensland Notice 234(T)/2021

The west cardinal light buoy, Q(9)15s (19° 17'.86 S 148° 22'.28 E), is off station and reported to be in position 19° 17'.84 S 147° 24'.68 E.

Chart temporarily affected - Aus 827

596(T)/2021 AUSTRALIA - QUEENSLAND - Hay Point - Light beacon maintenance works completed
Former Notice - 531(T)/2021 is cancelled
Maritime Safety Queensland

Cancel this notice on receipt.

Chart formerly affected - Aus 249 - Aus 250 - Aus 823

597(T)/2021 AUSTRALIA - QUEENSLAND - Karumba - Dredging operations completed

Former Notice - 479(T)/2021 is cancelled
Maritime Safety Queensland

Cancel this notice on receipt.

Chart formerly affected - Aus 6**598(T)/2021 AUSTRALIA - QUEENSLAND - Mermaid Beach - Scientific instrument**

Maritime Safety Queensland Notice 253(T)/2021

A special conical light buoy, *Fl(5)Y.20s*, exists in position 28° 02'.42 S 153° 27'.14 E.

Chart temporarily affected - Aus 814**599(T)/2021 AUSTRALIA - QUEENSLAND - Moreton Bay - Ship to ship transfer**

Maritime Safety Queensland Notice 245(T)/2021

Ship to ship transfer of LPG will be conducted at STS1 anchorage (27° 17'.17 S 153° 16'.57 E).

A 0.54M radius exclusion zone exists around transfer operations.

Chart temporarily affected - Aus 236**600(T)/2021 AUSTRALIA - QUEENSLAND - Moreton Bay - Spitfire Channel - Obstruction**

Maritime Safety Queensland Notice 257(T)/2021

An obstruction exists on the seabed in position 27° 03'.63 S 153° 17'.32 E.

Mariners are advised to navigate with caution in the area.

Chart temporarily affected - Aus 235 - Aus 236 - Aus 814 - Aus 815**601(T)/2021 AUSTRALIA - QUEENSLAND - Port Phillip - Queenscliff - Harbour works**

Parks Victoria

Harbour works are in progress at Queenscliff Pier (38° 16'.10 S 144° 40'.12 E), and berthing is unavailable.

Mariners are advised to navigate with caution.

Chart temporarily affected - Aus 143 - Aus 144**602(T)/2021 AUSTRALIA - QUEENSLAND - Red Island Point - Light buoys relit**

Former Notice - 376(T)/2015 is cancelled
Maritime Safety Queensland

Cancel this notice on receipt.

Chart formerly affected - Aus 294**603(T)/2021 AUSTRALIA - QUEENSLAND - Townshend Island - Live firing northwards**

Department of Defence

During the period 16 to 19 July 2021, live firing will be conducted in an area bounded by the following positions:

22° 12'.84 S 150° 22'.80 E

22° 13'.44 S 150° 37'.80 E

21° 52'.68 S 150° 44'.10 E

21° 49'.32 S 150° 23'.82 E.

Mariners are advised to avoid the area and to monitor VHF Ch 16 and Ch 69 for any security advice and safety information.

Chart temporarily affected - Aus 260 - Aus 367 - Aus 490 - Aus 822 - Aus 823

604(T)/2021 AUSTRALIA - WESTERN AUSTRALIA - Ashburton - Dredging operations; survey operations completed*Former Notice - 569(T)/2021 is cancelled*

Pilbara Ports Authority Notice A6(T)/2021, PH10(T)/2021, Department of Transport WA Notice 81/2021

Cancel this notice on receipt.

Chart formerly affected - Aus 64**605(T)/2021 AUSTRALIA - WESTERN AUSTRALIA - Barrow Island - Subsea operations northwestwards completed***Former Notice - 488(T)/2021 is cancelled*

Technip FMC

Cancel this notice on receipt.

Chart formerly affected - Aus 328**606(T)/2021 AUSTRALIA - WESTERN AUSTRALIA - Barrow Island - Scientific instruments recovered northwestwards***Former Notice - 390(T)/2021 is cancelled*

Technip FMC

Cancel this notice on receipt.

Chart formerly affected - Aus 328**607(T)/2021 AUSTRALIA - WESTERN AUSTRALIA - Dampier - Navaid works completed***Former Notice - 24(T)/2021 is cancelled*

Pilbara Ports Authority Notice D9(T)/2021

Cancel this notice on receipt.

Chart formerly affected - Aus 57 - Aus 60**608(P)/2021 AUSTRALIA - WESTERN AUSTRALIA - Jurien Bay - Shoaling***Former Notice - 1011(T)/2020 is cancelled*

Department of Transport WA Notice 100/2020, Australian Hydrographic Office

Latest survey shows shoaler depths than those charted may exist in an area bounded by the following positions:

30° 17'.13 S 115° 02'.00 E

30° 17'.12 S 115° 02'.08 E

30° 17'.23 S 115° 02'.13 E

30° 17'.25 S 115° 02'.00 E.

Mariners are advised to navigate with caution in the area.

Charts will be updated in due course.

Chart which will be affected - Aus 84**609(T)/2021 AUSTRALIA - WESTERN AUSTRALIA - Montebello Islands - Subsea operations northwestwards***Former Notice - 539(T)/2021 is cancelled*

Technip FMC

MV *Deep Orient* and support vessels are conducting subsea operations in the vicinity of position 19° 54'.78 S 115° 07'.92 E.**Chart temporarily affected - Aus 328**

610(T)/2021 AUSTRALIA - WESTERN AUSTRALIA - Port Hedland - Dredging operations

Pilbara Ports Authority Notice PH 10(T)/2021

The dredge *Juan Sebastian De Elcano* and support vessels *Renegade* and *Puriya* are conducting dredging operations in the inner harbour, shipping channel, areas adjacent to the shipping channel and designated spoil grounds.

Vessels will display appropriate lights and shapes and will monitor VHF Ch 12 and Ch 16.

Mariners are advised to navigate with caution in the area.

Chart temporarily affected - Aus 53 - Aus 54**611(T)/2021 AUSTRALIA - SOUTH AUSTRALIA - Thevenard - Bosanquet Bay - Harbour works completed**

Former Notice - 755(T)/2018 is cancelled

Wallbridge Gilbert Aztec

Cancel this notice on receipt.

Chart formerly affected - Aus 120 - Aus 122**612(T)/2021 AUSTRALIA - SOUTH AUSTRALIA - Thevenard - Bosanquet Bay - Light beacon unlit**

Department for Infrastructure and Transport SA 18(T)/2021

The south cardinal light beacon, Q(6)+LFl.15s (32° 09'.84 S 133° 39'.34 E), is unlit.

Chart temporarily affected - Aus 120**613(T)/2021 AUSTRALIA - SOUTH AUSTRALIA - Thevenard - Yatala Channel - Harbour works**

Department for Infrastructure and Transport SA Notice 16(T)/2021

Maintenance and construction activities are in progress on the Thevenard Jetty (32° 08'.95 S 133° 38'.48 E) and throughout the Yatala Channel (32° 11'.54 S 133° 35'.08 E)

All vessels will monitor VHF Ch 12.

Mariners are advised to navigate with caution in the area.

Chart temporarily affected - Aus 120 - Aus 341**614(T)/2021 AUSTRALIA - VICTORIA - Port Albert Entrance - Shoaling charted**

Former Notice - 296(P)/2021 is cancelled

Gippsland Ports Notice 136/2021

Cancel this notice on receipt.

Chart formerly affected - Aus 181 - Aus 357**615(T)/2021 AUSTRALIA - VICTORIA - Port Phillip - Point Cole - Light beacon unlit**

Parks Victoria Notice 186(T)/2021

The special light beacon, Fl.Y.4s (37° 53'.85 S 144° 58'.96 E), is unlit.

Chart temporarily affected - Aus 155**616(T)/2021 AUSTRALIA - VICTORIA - Port Phillip - Altona - Light beacon unlit**

Parks Victoria Notice 187(T)/2021

The port lateral light beacon Fl.R.4s (37° 52'.37 S 144° 50'.95 E), is unlit.

Chart temporarily affected - Aus 155

617(T)/2021 AUSTRALIA - VICTORIA - Port Phillip - Sorrento Channel - Light beacon unreliable
Parks Victoria Notice 208(T)/2021

The starboard lateral light beacon, *Fl.G.5s No1* (38° 19'.48 S 144° 44'.53 E), is unreliable.

Chart temporarily affected - Aus 143 - Aus 150

618(T)/2021 AUSTRALIA - VICTORIA - Port Phillip - Half Moon Bay - Obstructions
Parks Victoria Notices 215(T), 218(T)/2021

The jetty (37° 58'.09 S 145° 00'.58 E) has been demolished. Shoaling and obstructions may exist in the area north of the jetty.

Mariners are advised to navigate with caution in the area.

Chart temporarily affected - Aus 155

619(T)/2021 AUSTRALIA - VICTORIA - Seaspray - Platform unlit southwards
Australian Maritime Safety Authority Auscoast Warning 133/2021

The *Perch* platform, *Mo(U)15s* (38° 34'.13 S 147° 19'.35 E), is unlit.

Chart temporarily affected - Aus 357 - Aus 487 - Aus 4601 (INT 601) - Aus 4644 (INT 644)

620(T)/2021 AUSTRALIA - VICTORIA - Western Port - Crib Point - Exclusion zone; light buoys
Maritime Safety Victoria Notice 202(T)/2021, 205(T)/2021

A 200m radius exclusion zone exists around position 38° 20'.48 S 145° 13'.45 E.

Special light buoys, *Fl.Y.5s*, exist in the following positions:

38° 20'.58 S 145° 13'.49 E

38° 20'.57 S 145° 13'.40 E

38° 20'.34 S 145° 13'.37 E

38° 20'.33 S 145° 13'.51 E.

Chart temporarily affected - Aus 150 - Aus 151

621(T)/2021 AUSTRALIA - TASMANIA - Marion Narrows - Light beacon unreliable
Marine and Safety Tasmania Notice M157(T)/2021

The port lateral light beacon, *Fl(2)R.5s No3* (42° 50'.86 S 147° 53'.19 E), is unreliable.

Chart temporarily affected - Aus 169 - Aus 171

622(T)/2021 AUSTRALIA - TASMANIA - Norfolk Bay - Smooth Island - Light unreliable
Marine and Safety Tasmania Notice M159(T)/2021

The light, *Fl(3)6s 4m 6M* (42° 56'.40 S 147° 46'.88 E), is unreliable.

Chart temporarily affected - Aus 171 - Aus 796

623(T)/2021 AUSTRALIA - TEMPORARY AND PRELIMINARY NOTICES

Former Notice - 305(T)/2021 is cancelled
 Australian Hydrographic Office

<i>Notice</i>	<i>Charts affected</i>	<i>Locality and Subject</i>
468/2020	Aus487 4644	BASS STRAIT Survey operations
494/2019	Aus611 612	CORAL SEA <i>Kenn Reefs and Frederick Reefs</i> Shoaling
385/2021	Aus614 4602 4604 4621	<i>Lihou Reef</i> Light unlit
21/2021	Aus618	<i>Middleton Reef</i> Unexploded ordnance
989/2017	Aus377	<i>Portlock Reefs</i> Reefs
602/2020	Aus200 808 809	NEW SOUTH WALES <i>Ben Buckler</i> Scientific instruments southeastwards
196/2021	Aus198	<i>Botany Bay</i> Navaid replacement works
573/2018	Aus806	<i>Callo Point</i> Exclusion zone
709/2016	Aus813	<i>Cape Byron</i> Obstructions eastwards
213/2017 1049/2019 591/2021	Aus222 812 813 Aus222 Aus222	<i>Clarence River</i> Harbour works Dredging operations Light unlit
862/2020	Aus813 814	<i>Fingal Head</i> Artificial reef
604/2020	Aus807 808	<i>Jervis Bay</i> Light buoy
997/2020	Aus806 807	<i>Merimbula Bay to Broulee Island</i> Scientific instruments
607/2020	Aus200 489 808 4620 4621 4623 4634 4635 4643 PNG379 505 506 621	PAPUA NEW GUINEA - SOLOMON ISLANDS Submarine cable
102/2021 105/2021 107/2021 523/2021 524/2021	Aus200 Aus200 Aus200 Aus200 Aus200	<i>Port Jackson</i> Harbour works Jetties ruined Dredging operations Light buoys Scientific instruments
549/2020 593/2021 594/2021	Aus195 Aus195 Aus195	<i>Port Kembla</i> Exclusion zone Drilling operations Harbour works

623(T)/2021 AUSTRALIA - TEMPORARY AND PRELIMINARY NOTICES

<i>Notice</i>	<i>Charts affected</i>	<i>Locality and Subject</i>
609/2020	Aus235 489 809 815 4601 4602 4604 4622 4623 4634 4635 4643 SLB305	<i>Sydney - Maroochydore - SOLOMON ISLANDS</i> Submarine cable
485/2020	Aus489 806 807 808 809 810 4601 4602 4643	<i>Tathra to Seal Rocks</i> Obstructions
966/2016 559/2017	Aus192 Aus192	<i>Twofold Bay</i> Berth damaged Scientific instruments
NORTHERN TERRITORY		
462/2020	Aus309 316 722	<i>Bass Reef</i> Obstruction
211/2021 213/2021 487/2021	Aus26 Aus25 Aus25 26	<i>Darwin</i> Scientific instruments Light buoy off station Mooring buoy
215/2021	Aus25 26	<i>Darwin Naval Base</i> Harbour works; exclusion zone
QUEENSLAND		
951/2019 1255/2019 957/2020 369/2021	Aus255 826 Aus255 Aus255 Aus255	<i>Abbot Point</i> Light beacon unlit; light buoy established Shoal Scientific instrument Virtual AIS
864/2020	Aus251 255 821 824 825 826	<i>Abbot Point to Hydrographers Passage</i> Survey operations
544/2019 558/2021	Aus269 Aus269	<i>Airlie Beach</i> Light beacon unlit Dredging operations
461/2017	Aus268	<i>Bowen</i> Obstruction
594/2019 998/2020	Aus246 Aus246	<i>Boyne River</i> Obstruction Light buoy off station
153/2021	Aus490 816 818 4635	<i>Breaksea Spit</i> Light buoy withdrawn
213/2018	Aus236	<i>Bribie Island</i> Shoaling
27/2018	Aus236	<i>Brisbane</i> Harbour works

623(T)/2021 AUSTRALIA - TEMPORARY AND PRELIMINARY NOTICES

<i>Notice</i>	<i>Charts affected</i>	<i>Locality and Subject</i>
		<i>Brisbane River</i>
334/2019	Aus238	Wreck
335/2019	Aus238	Harbour works
483/2019	Aus238	Harbour works; light buoy
890/2019	Aus238	Harbour works
891/2019	Aus237 238	Scientific instrument
1215/2019	Aus238	Harbour works
311/2020	Aus238	Vertical clearance reduced
312/2020	Aus237	Harbour works
349/2020	Aus238	Harbour works
958/2020	Aus238	Harbour works
1005/2020	Aus237 238	Dredging operations
525/2021	Aus238	Harbour works
528/2021	Aus238	Harbour works
		<i>Bundaberg</i>
605/2016	Aus242	Shoaling
707/2017	Aus242	Anchoring prohibited
455/2018	Aus242	Light beacon
16/2021	Aus817 818	Light beacon destroyed
477/2021	Aus242	Harbour works
		<i>Burnett River</i>
250/2018	Aus242	Wreck
		<i>Cape Bowling Green</i>
105/2020	Aus827	Obstruction; light buoy
457/2020	Aus826 827	Obstruction southeastwards
595/2021	Aus827	Light buoy off station
		<i>Cape Ferguson</i>
247/2021	Aus256	Scientific instrument
		<i>Clump Point</i>
486/2019	Aus258	Light buoys
		<i>Daintree River</i>
577/2018	Aus831	Light buoy withdrawn
716/2019	Aus831	Light buoy withdrawn
		<i>Daydream Island</i>
418/2017	Aus252 253	Lights unlit; light buoys established
		<i>First Three Mile Opening</i>
372/2021	Aus834	Light unreliable
		<i>Fitzroy Island</i>
72/2018	Aus830	Light buoys
		<i>Fitzroy River</i>
661/2016	Aus819	Scientific instrument
248/2020	Aus247 819	Light buoys off station
111/2021	Aus247 265	Scientific instrument
		<i>Flinders Reef</i>
782/2018	Aus615	Shoaling
830/2018	Aus235 236	Light buoy withdrawn
		<i>Fraser Island</i>
56/2021	Aus240	Shoaling

623(T)/2021 AUSTRALIA - TEMPORARY AND PRELIMINARY NOTICES

<i>Notice</i>	<i>Charts affected</i>	<i>Locality and Subject</i>
62/2021	Aus245 246	<i>Gladstone</i> Scientific instrument
64/2021	Aus245	Harbour works
66/2021	Aus245 246 247	Scientific instruments
68/2021	Aus245 247	Scientific instruments
374/2021	Aus246	Light beacon altered; light buoy
560/2021	Aus245 246	Scientific instruments
521/2017	Aus258	<i>Gladys Inlet</i> Light buoy off station
555/2020	Aus814	<i>Gold Coast</i> Scientific instrument
523/2017	Aus821 824 825	<i>Great Barrier Reef</i> Shoaling
971/2016	Aus241 817	<i>Great Sandy Strait</i> Shoaling
1141/2018	Aus240	Wreck; light buoys
1260/2019	Aus240	Light beacon unlit
33/2020	Aus240	Light beacon destroyed
159/2020	Aus241	Scientific instrument
204/2020	Aus240	Light beacon unlit
112/2021	Aus240	Wreck, light buoy
375/2021	Aus241 817	Light buoys
376/2021	Aus241	Light buoy
530/2021	Aus241 817	Scientific instruments
215/2018	Aus259	<i>Hinchinbrook Channel</i> Wreck
249/2021	Aus260 367 822	<i>Holt Island to Hexham Island</i> Shoaling
548/2019	Aus821 824	<i>Hydrographers Passage</i> Shoaling
458/2020	Aus258	<i>Johnstone River</i> Light buoy off station
488/2019	Aus303	<i>Karumba</i> Wreck northwards
378/2021	Aus6	Shoaling
1006/2020	Aus247 265	<i>Keppel Bay</i> Light buoy unlit
442/2021	Aus813 814	<i>Kirra Point</i> Scientific instrument
286/2020	Aus252	<i>Laguna Quays</i> Shoaling; nav aids
562/2021	Aus267	<i>Lucinda</i> Light buoy
429/2020	Aus250	<i>Mackay</i> Obstruction; light buoy
598/2021	Aus814	<i>Mermaid Beach</i> Scientific instrument
528/2018	Aus235	<i>Mooloolaba Harbour</i> Light buoy

623(T)/2021 AUSTRALIA - TEMPORARY AND PRELIMINARY NOTICES

<i>Notice</i>	<i>Charts affected</i>	<i>Locality and Subject</i>
		<i>Moreton Bay</i>
328/2017	Aus236	Light beacon destroyed
526/2017	Aus236	Light beacon damaged
408/2018	Aus235 236	Scientific instruments
530/2018	Aus236	Scientific instrument
531/2018	Aus236	Light Buoy;Wreck
687/2018	Aus236	Shoaling
688/2018	Aus236	Harbour works northwestwards
732/2018	Aus235 236	Shoaling
975/2018	Aus236	Light buoy; wreck
1145/2018	Aus236	Wreck
175/2019	Aus236	Scientific instrument
440/2019	Aus236	Wreck; light buoy
490/2019	Aus236	Harbour Works; light beacon northwards
551/2019	Aus236	Light beacon unlit
720/2019	Aus236	Light beacon destroyed
895/2019	Aus235 236	Light buoy
1261/2019	Aus236	Light beacon unlit
17/2021	Aus235 236	Light buoy off station
72/2021	Aus236	Light beacon destroyed
73/2021	Aus236	Light buoy off station
197/2021	Aus236	Wreck
251/2021	Aus236	Wreck; light buoy
328/2021	Aus235 236	Light beacon unreliable
329/2021	Aus236	Dredging operations
330/2021	Aus236	Wreck; light buoy
599/2021	Aus236	Ship to ship transfer
600/2021	Aus235 236 814 815	Obstruction
		<i>Moreton Island</i>
552/2019	Aus236	Light beacon destroyed
		<i>Myrmidon Reef</i>
390/2020	Aus828	Scientific instruments
		<i>North Gardner Bank</i>
470/2017	Aus816	Foul ground
		<i>North Stradbroke Island</i>
380/2021	Aus236	Obstruction
		<i>Poll Islet</i>
332/2021	Aus839 841	Wreck
		<i>Port Phillip</i>
601/2021	Aus143 144	Harbour works
		<i>Port of Airlie</i>
733/2018	Aus252 253 269	Harbour works
711/2020	Aus253 269	Wreck
		<i>Proserpine River</i>
379/2017	Aus252 824	Light beacon unlit
		<i>Pumicestone Channel</i>
714/2016	Aus235 236	Scientific instruments
1095/2017	Aus236	Marine farm; light buoy
74/2021	Aus235	Wreck, light buoy
		<i>Red Island Point</i>
177/2019	Aus294	Wreck
		<i>Repulse Bay</i>
161/2021	Aus252 824	Light buoy

623(T)/2021 AUSTRALIA - TEMPORARY AND PRELIMINARY NOTICES

<i>Notice</i>	<i>Charts affected</i>	<i>Locality and Subject</i>
249/2020	Aus837 839	<i>Richardson Reef to Newman Reef</i> Scientific instruments
280/2019	Aus247	<i>Rosslyn Bay</i> Shoaling
868/2020	Aus249	<i>Round Top Island</i> Scientific instrument eastwards
615/2017	Aus829 830	<i>Russell Heads</i> Light withdrawn
534/2021	Aus829 830	<i>Russell Island</i> Light unreliable
564/2021	Aus251 824	<i>Schooner Rock</i> Light buoy off station
567/2021	Aus252 253 269	<i>Shute Harbour</i> Harbour works; lights
561/2020	Aus814	<i>The Broadwater</i> Light buoys
19/2021	Aus301	<i>Thud Point</i> Scientific instrument
603/2021	Aus260 367 490 822 823	<i>Townshend Island</i> Live firing northwards
619/2020	Aus256 827	<i>Townsville</i> Harbour works
1008/2020	Aus256	Wreck
334/2021	Aus256 827	Dredging operations
336/2021	Aus256	Wreck; light buoy
383/2021	Aus256	Navaid re-alignment works; virtual AIS; light
179/2017	Aus4	<i>Weipa</i> Light buoy off station
393/2019	Aus4	Harbour works
603/2019	Aus4	Scientific instruments
723/2019	Aus4 301	Tide gauge; light buoy
1091/2018	Aus252 253	<i>Whitsunday Island</i> Buoys
20/2021	Aus252 253 824	Light buoy off station
980/2018	Aus240 815 817	<i>Wide Bay</i> Shoaling
SOUTH AUSTRALIA		
436/2017	Aus485 780	<i>Fleurieu Peninsula</i> Hulk; prohibited area
794/2018	Aus342	<i>Flinders Island</i> Light unlit
884/2020	Aus781	<i>Glenelg</i> Shoaling; dredging operations
125/2021	Aus781	Artificial reef; scientific instrument
81/2021	Aus781	<i>Gulf St Vincent</i> Artificial reef

623(T)/2021 AUSTRALIA - TEMPORARY AND PRELIMINARY NOTICES

<i>Notice</i>	<i>Charts affected</i>	<i>Locality and Subject</i>
723/2020	Aus485 780 781	<i>Investigator Strait to Gulf St Vincent</i> Tide gauges
733/2019	Aus347	<i>Lacedpede Bay</i> Wreck
506/2019 934/2020	Aus777 Aus777	<i>Lucky Bay</i> Harbour works Dredging operations
492/2021	Aus341 342 343	<i>Masillon Island to Rocky Island</i> Islands out of position
291/2021	Aus130	<i>Port Adelaide</i> Shoaling
620/2016	Aus136	<i>Port Pirie</i> Harbour works
346/2021	Aus136 778	<i>Spencer Gulf</i> Light beacon unlit
612/2021 613/2021	Aus120 Aus120 341	<i>Thevenard</i> Light beacon unlit Harbour works
886/2020	Aus347 780	<i>Wirrina Cove</i> Light beacon altered
438/2021	Aus4601	TASMAN SEA <i>Tasman Basin</i> Light buoy off station
302/2021	Aus179 487 767 798 800	TASMANIA <i>Banks Strait</i> Survey operations
81/2020 733/2020 266/2021 510/2021	Aus163 799 Aus163 Aus799 Aus799	<i>Burnie</i> Survey operations Harbour works Scientific instrument northeastwards Scientific instrument northeastwards
522/2020	Aus173	<i>D'Entrecasteaux Channel</i> Harbour works; light buoys
263/2018	Aus164	<i>Devonport</i> Shoaling
682/2020	Aus179 798 800	<i>Franklin Sound</i> Shoaling
130/2021	Aus171	<i>Frederick Henry Bay</i> Wreck
523/2020	Aus169	<i>Georges Bay</i> Wreck
582/2021	Aus172	<i>Hobart</i> Harbour works
177/2021	Aus178	<i>King Island</i> Platform, submarine cable, prohibited area
		<i>Maria Island</i>

623(T)/2021 AUSTRALIA - TEMPORARY AND PRELIMINARY NOTICES
747/2019 Aus170 766 797 Scientific instruments

<i>Notice</i>	<i>Charts affected</i>	<i>Locality and Subject</i>
621/2021	Aus169 171	<i>Marion Narrows</i> Light beacon unreliable
622/2021	Aus171 796	<i>Norfolk Bay</i> Light unreliable
140/2019	Aus171 796	<i>Norfolk Bay to Betsey Island</i> Scientific instruments
183/2020 404/2020	Aus171 174 Aus171 174	<i>North West Bay</i> Infrastructure Mooring area
627/2016	Aus171 796	<i>Pipe Clay Head to Pitt Water</i> Scientific instruments
1017/2020	Aus796	<i>Pitt Water</i> Wreck
505/2018 443/2020	Aus172 Aus172	<i>River Derwent</i> Wreck Harbour works
760/2018 353/2021	Aus795 796 Aus796	<i>Storm Bay</i> Light buoy Scientific instruments
TIMOR SEA		
223/2009 166/2020	Aus312 4721 Aus314 321 4721 4722	<i>Sahul Banks</i> Navaid; racon non operational Seismic survey
389/2021	Aus312 315 4721	<i>Van Cloon Shoal</i> Subsea operations northwards
TORRES STRAIT		
337/2021	Aus841	<i>Boigu Island</i> Shoaling
1049/2020	Aus842	<i>Deliverance Island</i> Shoaling
166/2021 486/2021	Aus837 839 840 Aus839	<i>Great North East Channel</i> Survey operations Scientific instruments
396/2020	Aus293 294 299 700	<i>Horn Island</i> Wreck
410/2016	Aus841 842	<i>Talbot Islands to Deliverance Island</i> Obstructions
252/2020	Aus293 299	<i>Thursday Island</i> Harbour works
VICTORIA		
493/2021	Aus143	<i>Barwon Head</i> Light buoy withdrawn eastwards
737/2019 888/2020	Aus140 348 349 4728 Aus348	<i>Cape Duquesne</i> Scientific instruments Scientific instruments

623(T)/2021 AUSTRALIA - TEMPORARY AND PRELIMINARY NOTICES

<i>Notice</i>	<i>Charts affected</i>	<i>Locality and Subject</i>
1231/2019 115/2020	Aus357 Aus357	<i>Golden Beach</i> Scientific instrument Scientific instrument southeastwards
39/2020	Aus357 487 802	<i>Port Albert Entrance</i> Scientific instruments eastwards
265/2021 298/2021 348/2021	Aus349 787 Aus349 787 4728 Aus349 787	<i>Port Campbell</i> Mooring buoys southwards Drill rig southwards Survey operations southwestwards
328/2020 578/2021	Aus141 349 Aus141	<i>Port Fairy</i> Light unreliable Light buoy off station
678/2019	Aus141 349	<i>Port Fairy Bay</i> Scientific instrument
379/2018 1292/2019 42/2020 728/2020 35/2021 350/2021 409/2021 411/2021 413/2021 495/2021 496/2021 500/2021 502/2021 504/2021 506/2021 508/2021 542/2021 544/2021 579/2021 615/2021 616/2021 617/2021 618/2021	Aus143 155 Aus143 155 Aus155 Aus143 157 Aus155 Aus153 157 Aus157 Aus157 Aus157 Aus143 155 Aus143 155 157 Aus143 Aus143 144 150 788 Aus143 Aus143 Aus143 Aus143 Aus143 155 Aus144 Aus143 155 Aus155 Aus155 Aus143 150 Aus155	<i>Port Phillip</i> Light beacon unlit Light beacon unlit Obstruction Exclusion zone Light buoy off station Scientific instruments Scientific instrument Harbour works Light buoys; AIS Light beacon unlit Scientific instruments Dredging operations Shoaling; virtual AIS Dredging operations Light buoy off station Shoaling; virtual AIS Dredging operations Light buoy off station Jetty Light beacon unlit Light beacon unlit Light beacon unreliable Obstructions
895/2020	Aus181	<i>Port Welshpool to McLoughlins Entrance</i> Shoaling
416/2021	Aus140	<i>Portland</i> Shoaling
219/2020	Aus140 349	<i>Portland Bay</i> Scientific instruments
792/2020 977/2020	Aus181 357 802 Aus181 357 802	<i>Seal Islands</i> Scientific instruments eastwards Scientific instruments northeastwards
619/2021	Aus357 487 4601 4644	<i>Seaspray</i> Platform unlit southwards
92/2019 221/2021	Aus150 Aus150 151	<i>Western Port</i> Shoaling Light beacons unlit

623(T)/2021	AUSTRALIA - TEMPORARY AND PRELIMINARY NOTICES	
223/2021	Aus150 151	Shoaling
620/2021	Aus150 151	Exclusion zone; light buoys

<i>Notice</i>	<i>Charts affected</i>	<i>Locality and Subject</i>
WESTERN AUSTRALIA		
<i>Barrow Island</i>		
291/2019	Aus328	Well abandonment works northwestwards
910/2019	Aus328 4723 4725	Subsea operations northwestwards
911/2019	Aus328 4723	Subsea operations northwestwards
966/2020	Aus328	Subsea operations northwestwards
394/2021	Aus65 327 742 743	Maintenance operations
489/2021	Aus65 742	Light beacon unlit
<i>Bedout Islet</i>		
257/2021	Aus325 326	Seismic survey northwards
<i>Browse Island</i>		
449/2021	Aus319 320 322	Subsea operations
538/2021	Aus319 320 322 4721 4722	Drill rig northwestwards
<i>Carnarvon</i>		
33/2019	Aus73 331	Light Beacon destroyed
83/2019	Aus73	Light buoy
561/2019	Aus73	Shoaling
497/2020	Aus73	Dredging operations
781/2020	Aus73	Scientific instrument
<i>City Beach</i>		
571/2021	Aus112 754	Cable laying operations; diving operations
<i>Dampier</i>		
1113/2019	Aus59	Light buoy established
<i>Dampier Archipelago</i>		
1273/2019	Aus57 327 742	Obstruction eastwards
1055/2020	Aus57 327 742	Scientific instrument
<i>East Holothuria Reef</i>		
1078/2015	Aus318 319 727 728	Shoaling
<i>Exmouth Reef to Ningaloo Reef</i>		
968/2020	Aus328 329 744 745	Scientific instruments
<i>Fremantle</i>		
399/2021	Aus112 754	Light beacon damaged
401/2021	Aus112 117 754	Dredging operations
<i>Garden Island</i>		
1165/2019	Aus117	Obstruction; light buoy
<i>Geographe Bay</i>		
575/2020	Aus116 755	Scientific instruments
<i>Geraldton</i>		
342/2021	Aus81	Harbour works
<i>Glomar Shoal</i>		
217/2021	Aus327	Survey operations northwestwards
<i>Houtman Abrolhos</i>		
1280/2019	Aus332	Shoaling
INDIAN OCEAN		
879/2020	Aus112 606 607 754 4060 4070 4071 4708 4709 4714 4725	Survey operations
<i>Joseph Bonaparte Gulf</i>		

623(T)/2021 AUSTRALIA - TEMPORARY AND PRELIMINARY NOTICES
969/2020 Aus318 4721 Subsea operations

<i>Notice</i>	<i>Charts affected</i>	<i>Locality and Subject</i>
1010/2020 608/2021	Aus84 753 Aus84	<i>Jurien Bay</i> Scientific instruments Shoaling
404/2021	Aus40 41	<i>Koolan Island</i> Mooring buoy
782/2020	Aus117 754 755	<i>Kwinana</i> Harbour works
491/2021	Aus49 323 324	<i>Lacepede Channel</i> Survey operations; tide gauges
970/2020	Aus116	<i>Mandurah</i> Harbour works
971/2020	Aus320 323 732	<i>Mavis Reef</i> Scientific instruments eastwards
991/2018 343/2021 609/2021	Aus327 742 Aus328 742 Aus328	<i>Montebello Islands</i> Light unreliable Subsea operations northwestwards Subsea operations northwestwards
1056/2020 405/2021 576/2021	Aus328 329 744 Aus328 329 744 Aus328 329 744	<i>Muiron Islands</i> Subsea operations northwestwards Drill rig northwestwards Subsea operations northwestwards
284/2021	Aus331	<i>Naturaliste Channel</i> Scientific instrument
1224/2019	Aus357 487	<i>Ninety Mile Beach</i> Survey operations
285/2021	Aus754	<i>Ocean Reef Boat Harbour</i> Artificial reef westwards
1118/2019	Aus336	<i>Point D'Entrecasteaux to Point Nuyts</i> Shoaling
626/2019 320/2020 972/2020 455/2021 610/2021	Aus53 Aus53 326 Aus53 54 Aus54 Aus53 54	<i>Port Hedland</i> Scientific instruments Anchorages Scientific instruments Harbour works Dredging operations
1285/2019	Aus55 326	<i>Port Walcott</i> Tide gauge
540/2021	Aus64 743	<i>Port of Ashburton</i> Light buoy off station
480/2016 731/2016 407/2021	Aus327 Aus327 328 Aus327	<i>Rankin Bank</i> Scientific instrument Scientific instruments southwestwards Well plug and abandonment works eastwards
212/2020 933/2020 408/2021	Aus754 Aus754 Aus112 754 4708 4709 4725 4726	<i>Rottnest Island</i> Scientific instruments northwestwards Scientific instrument Light altered

623(T)/2021 AUSTRALIA - TEMPORARY AND PRELIMINARY NOTICES

<i>Notice</i>	<i>Charts affected</i>	<i>Locality and Subject</i>
498/2020	Aus112	<i>Trigg Island</i> Scientific instruments westwards
254/2020	Aus310 4721	INDONESIA <i>Selaru</i> Scientific instruments
664/2017	Aus4623	PACIFIC OCEAN Scientific instruments
35/2018 826/2020	Aus507 4620 4621 PNG506 507 623	PAPUA NEW GUINEA <i>Batumata Point</i> Survey operations southeastwards Shoaling
789/2018 164/2021	Aus4622 Aus4603 4604 4622 PNG391	<i>Bismarck Sea</i> Fish aggregating devices Light unlit
771/2020	PNG379 647	<i>Boera Head</i> Light unlit
480/2021	Aus4622 PNG387 388	<i>Cape Croisilles</i> Light unlit
255/2021	Aus4604 4622 PNG397 398 554 668	<i>Cape St George</i> Light unlit
963/2020 481/2021	PNG647 648 PNG647	<i>Caution Bay</i> Light beacon damaged Light beacon unlit
564/2020	PNG673	<i>Dampier Strait</i> Light buoys off station
668/2020	Aus841	<i>Dauan Island</i> Light altered
968/2019	Aus545 554 PNG679 680	<i>Duke of York Island</i> Shoaling
346/2019 829/2020	PNG643 Aus4620 4621 4622 PNG386 521 522 523	<i>Huon Gulf</i> Light buoy off station Fish aggregating devices
1331/2019	Aus625 PNG508	<i>Isulailai Point</i> Light beacon unlit
116/2021	PNG392 393 543 666	<i>Kavieng to Neitab Island</i> Shoaling
516/2020	PNG674 677	<i>Kimbe</i> Light beacon unlit
286/2019	PNG646	<i>Madang Harbour</i> Shoaling
118/2021	Aus399 4604 4622 PNG397 684	<i>Madehas Island</i> Light unlit
499/2018	Aus505 621	<i>Manubada Island to Padana Nahua Passage</i> Shoaling

623(T)/2021 AUSTRALIA - TEMPORARY AND PRELIMINARY NOTICES

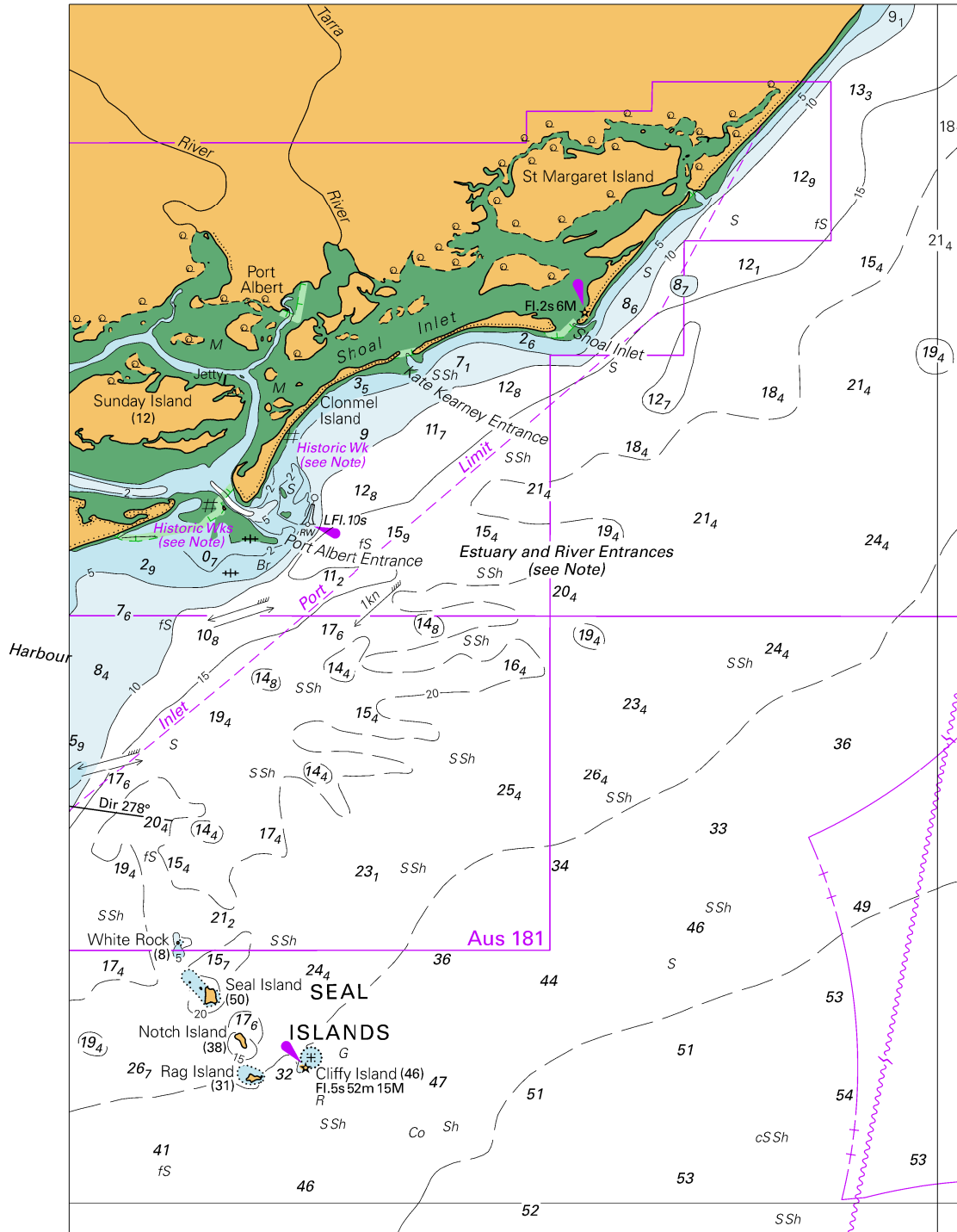
<i>Notice</i>	<i>Charts affected</i>	<i>Locality and Subject</i>
1048/2020	Aus4620 4621 PNG508 628	<i>Meimeicara Island</i> Light unlit
1110/2019	PNG628	<i>Oreore Channel</i> Light buoy off station
226/2017	Aus505 621	<i>Padana Nahua Passage to Bootless Inlet</i> Shoaling
201/2021	Aus840 841	<i>Saibai Island</i> Shoaling
SOLOMON ISLANDS		
44/2020	SLB104	<i>Bina Harbour</i> Shoaling
91/2018	SLB102 301 302	<i>Ghizo Island</i> Shoaling
512/2019	SLB303 304	<i>Guadalcanal Island</i> Light beacon unlit
677/2017	SLB101	<i>Honiara and Lungga Roads</i> Shoaling
678/2017	SLB101 201	<i>Lungga Point</i> Light beacon unlit
679/2017	Aus4604 4623 4634 SLB304 305	<i>Maana'oba Island to Mbita'ama Harbour</i> Lights unlit
514/2019	Aus4623 4634 SLB202 302	<i>Malakobi Island</i> Light beacon unlit
680/2017	SLB101	<i>Marau Sound</i> Light beacons unlit
681/2017	Aus4623 SLB107	<i>Ndende Island</i> Light unlit
682/2017	SLB102 301 302	<i>Nega Point</i> Light beacons unlit
847/2018	SLB102 301 302	<i>Nusatupe Island</i> Topmark destroyed
201/2019	SLB102	<i>Port Noro</i> Light beacon unreliable
406/2020	SLB102	<i>Port Noro to Kuri Point</i> Shoaling
683/2017	Aus4623 4634 SLB305	<i>San Christobal Island</i> Light unlit
TIMOR-LESTE		
987/2018	Aus901	<i>Dili</i> Light unlit

II

HYDROGRAPHIC REPORTS

NIL

To accompany Australian Notice to Mariners 590/2021



Block for chart Aus 357

© Commonwealth of Australia 2021

(136.6 x 189.0mm)