



25 June 2021

Edition 13

# AUSTRALIAN NOTICES TO MARINERS

**Notices 546 - 582**

Published fortnightly by the Australian Hydrographic Office



Australian Notices to Mariners are the authority for correcting charts and publications published by the Australian Hydrographic Office covering Australia, Papua New Guinea, Solomon Islands, Australian Antarctic Territory and Timor-Leste.

Commodore S.T. DUNNE RAN  
*Hydrographer of Australia*

---

## SECTIONS.

- I. **Australian Notices to Mariners, including blocks and notes.**
- II. **Hydrographic Reports.**

## SUPPLEMENTS.

- I. **Tracings**
- II. **Cumulative List of Australian Notices to Mariners.**
- III. **Cumulative List of Temporary and Preliminary Australian Notices to Mariners.**
- IV. **Temporary and Preliminary Notices in force.**

---

© Commonwealth of Australia 2021

This work is copyright. Apart from any use permitted under the Copyright Act 1968, no part may be reproduced by any process, adapted, communicated or commercially exploited without prior written permission from The Commonwealth represented by the Australian Hydrographic Office.

## IMPORTANT NOTICE

This edition of Notices to Mariners includes all significant information affecting AHO products which the AHO has become aware of since the last edition. All reasonable efforts have been made to ensure the accuracy and completeness of the information, including third party information, on which these updates are based. The AHO regards third parties from which it receives information as reliable, however the AHO cannot verify all such information and errors may therefore exist. The AHO does not accept liability for errors in third party information.

---

## GENERAL INSTRUCTIONS

The substance of these notices should be inserted on the charts affected.

Bearings are referred to the true compass and are reckoned clockwise from North; those relating to lights are given as seen by an observer from seaward.

Positions quoted in notices relate to WGS84 which is the horizontal datum for all charts produced by the Australian Hydrographic Office.

The range quoted for a light is its nominal range.

Depths are with reference to the chart datum of each chart. Heights are above mean high water springs or mean higher high water, as appropriate.

The capital letter (P) or (T) after the number of any notice denotes a preliminary or temporary notice respectively, which are contained separately at the end of the permanent notices.

---

## REPORTING OF DANGERS

Mariners are particularly requested to notify the AUSTRALIAN HYDROGRAPHIC OFFICE, Locked Bag 8801 Wollongong, NSW 2500 (e-mail [datacentre@hydro.gov.au](mailto:datacentre@hydro.gov.au) or, alternatively by filling in and submitting the [Hydrographic Notes](#) forms located on the web site – [www.hydro.gov.au](http://www.hydro.gov.au)), immediately on the discovery of new dangers or suspected dangers to navigation. For changes or defects in aids to navigation notify AusSAR (Fax 02-6230 6868 or email [rccaus@amsa.gov.au](mailto:rccaus@amsa.gov.au)).

---

## AUTHORISED USE

Copies of Australian notices are available free of charge from the Australian Hydrographic Office (AHO) website ([www.hydro.gov.au](http://www.hydro.gov.au)) and through the eNotices (email) service ([www.hydro.gov.au/enotices/enotices.htm](http://www.hydro.gov.au/enotices/enotices.htm)).

Individual Notices may be copied for the purpose of inserting Notice substance on official charts and publications. Paper copies may be printed by chart agents and distributed to customers on a cost recovery basis. Participating chart agents are listed on the AHO website as providing a 'Paper Notices to Mariners' service ([www.hydro.gov.au/webapps/jsp/agents/agents-list.jsp](http://www.hydro.gov.au/webapps/jsp/agents/agents-list.jsp)). Copies of the notices may not be sold for profit without prior written agreement.

## NUMERICAL INDEX OF NOTICES TO MARINERS

### Edition No 13

Notices	Aus Chart, INT Chart, ENC Cell, AHP, BA Pubs
<a href="#">546</a>	Aus 69
<a href="#">547</a>	Aus 13, 32, 150, 169, 170, 172, 174, 175, 726, 819
<a href="#">548</a>	Aus 807
<a href="#">549</a>	Aus 301
<a href="#">550</a>	Aus 240, 241
<a href="#">551</a>	Aus 833
<a href="#">552</a>	Aus 64
<a href="#">553</a>	Aus 322
<a href="#">554</a>	Aus 181
<a href="#">555</a>	Aus 155
<a href="#">556(T)</a>	Aus 807, 808
<a href="#">557(T)</a>	Aus 207, 209, 489, 809, 810
<a href="#">558(T)</a>	Aus 269
<a href="#">559(T)</a>	Aus 237, 238
<a href="#">560(T)</a>	Aus 245, 246
<a href="#">561(T)</a>	Aus 252, 254
<a href="#">562(T)</a>	Aus 267
<a href="#">563(T)</a>	Aus 256, 827
<a href="#">564(T)</a>	Aus 251, 824
<a href="#">565(T)</a>	Aus 248, 260, 367, 490, 820, 822
<a href="#">566(T)</a>	Aus 269
<a href="#">567(T)</a>	Aus 252, 253, 269
<a href="#">568(T)</a>	Aus 252, 253, 824
<a href="#">569(T)</a>	Aus 64
<a href="#">570(T)</a>	Aus 328
<a href="#">571(T)</a>	Aus 112, 754
<a href="#">572(T)</a>	Aus 327, 4722, 4723, INT 722, 723
<a href="#">573(T)</a>	Aus 328, 744
<a href="#">574(T)</a>	Aus 117, 754
<a href="#">575(T)</a>	Aus 327, 328, 743, 744
<a href="#">576(T)</a>	Aus 328, 329, 744
<a href="#">577(T)</a>	Aus 357
<a href="#">578(T)</a>	Aus 141
<a href="#">579(T)</a>	Aus 143, 155
<a href="#">580(T)</a>	Aus 144
<a href="#">581(T)</a>	Aus 357, 487, 798, 800, 4644, INT 644
<a href="#">582(T)</a>	Aus 172

## NUMERICAL INDEX OF CHARTS AFFECTED

### Edition No 13

Aus Chart	Notices
Aus 13	547
Aus 32	547
Aus 64	552, 569(T)
Aus 69	546
Aus 112	571(T)
Aus 117	574(T)
Aus 141	578(T)
Aus 143	579(T)
Aus 144	580(T)
Aus 150	547
Aus 155	555, 579(T)
Aus 169	547
Aus 170	547
Aus 172	547, 582(T)
Aus 174	547
Aus 175	547
Aus 181	554
Aus 207	557(T)
Aus 209	557(T)
Aus 237	559(T)
Aus 238	559(T)
Aus 240	550
Aus 241	550
Aus 245	560(T)
Aus 246	560(T)
Aus 248	565(T)
Aus 251	564(T)
Aus 252	561(T), 567(T), 568(T)
Aus 253	567(T), 568(T)
Aus 254	561(T)
Aus 256	563(T)
Aus 260	565(T)
Aus 267	562(T)
Aus 269	558(T), 566(T), 567(T)
Aus 301	549
Aus 322	553
Aus 327	572(T), 575(T)
Aus 328	570(T), 573(T), 575(T), 576(T)
Aus 329	576(T)
Aus 357	577(T), 581(T)
Aus 367	565(T)
Aus 487	581(T)
Aus 489	557(T)
Aus 490	565(T)
Aus 726	547
Aus 743	575(T)
Aus 744	573(T), 575(T), 576(T)
Aus 754	571(T), 574(T)
Aus 798	581(T)
Aus 800	581(T)
Aus 807	548, 556(T)
Aus 808	556(T)
Aus 809	557(T)
Aus 810	557(T)

Aus Chart	Notices
Aus 819	547
Aus 820	565(T)
Aus 822	565(T)
Aus 824	564(T), 568(T)
Aus 827	563(T)
Aus 833	551
Aus 4644	581(T)
Aus 4722	572(T)
Aus 4723	572(T)

INT Chart	Notices
INT 644	581(T)
INT 722	572(T)
INT 723	572(T)

**546 AUSTRALIA - Products - New Charts, New Editions, Withdrawn Charts**

Australian Hydrographic Office

**New Charts**

<i>Chart</i>	<i>Title and Geographical limits</i>	<i>Scale</i>	<i>Publication Date</i>	<i>Remarks</i>
NIL				

**New Electronic Navigation Chart (Aus ENC)**

<i>Cell Name</i>	<i>Title</i>	<i>Publication Date</i>	<i>Remarks</i>
PG410146	Papua New Guinea - South Coast - Pike Shoal to Caution Bay	17 June 2021	AU410146 has been withdrawn.
PG409150	Papua New Guinea - North East Coast - Lusancay Islands and Reefs	17 June 2021	AU409150 has been withdrawn.
PG409151	Papua New Guinea - Solomon Sea - Marshall Bennett Islands to Trobriand Islands	17 June 2021	AU409151 has been withdrawn.
PG409152	Papua New Guinea - Solomon Sea - Northern Approaches to Woodlark Island	17 June 2021	AU409152 has been withdrawn.
PG405152	Papua New Guinea - New Britain - St George Channel	17 June 2021	AU405152 has been withdrawn.
PG410148	Papua New Guinea - North East Coast - Dyke Auckland Bay	24 June 2021	AU410148 has been withdrawn.
PG410149	Papua New Guinea - North East Coast - Jabbering Reef to Cape Nelson	24 June 2021	AU410149 has been withdrawn.
PG406150	Papua New Guinea - New Britain - Bangula Bay to Willaumez Peninsula	24 June 2021	AU406150 has been withdrawn.
PG404142	Papua New Guinea - North Coast - Cape Djeruen to Sissano Lagoon	24 June 2021	AU404142 has been withdrawn.

**New Editions and Withdrawn Charts**

<i>Chart</i>	<i>Title</i>	<i>Scale</i>	<i>Publication Date</i>	<i>Remarks</i>
NIL				

**Charts withdrawn without replacement**

<i>Chart</i>	<i>Title</i>	<i>Scale</i>	<i>Publication Date</i>
Aus 69	Australia - North West Coast - Western Australia - Plans of Port of Ashburton and Onslow		18 December 2015
<b>Edition 1</b>	Plans:		
	Port of Ashburton	1:10 000	
	Onslow	1:12 500	

**Chart permanently withdrawn**

Charts listed above as withdrawn no longer meet chart carriage requirements and should be marked as "superseded" and replaced with the new chart/ new edition listed prior to passage through the area covered by the new chart.

When placing orders with a chart agent between notice of forthcoming edition and its publication, mariners should advise whether their order pertains to the current edition or the new edition.

For further details refer to the AHO website at [www.hydro.gov.au](http://www.hydro.gov.au) for new edition and new chart stock arrival information.

**547 AUSTRALIA - Products - New Charts and New Editions to be published shortly**

Australian Hydrographic Office

**New Charts to be published shortly**

<i>Chart</i>	<i>Title</i>	<i>Scale</i>	<i>Remarks</i>
NIL			

**New Editions to be published shortly**

<i>Chart</i>	<i>Title</i>	<i>Scale</i>	<i>Remarks</i>
Aus 819	Australia - East Coast - Queensland - Bustard Head to North Reef	1:150 000	New edition with general updating throughout; including latest bathymetric data.

**Charts to be withdrawn without replacement 9 July 2021**

<i>Chart</i>	<i>Title</i>	<i>Scale</i>	<i>Publication Date</i>
Aus 13 <b>Edition 1</b>	Australia - North Coast - Plans in Northern Territory (Sheet 1) Plans: Bing Bong Bickerton Island Port Langdon	 1:12 500 1:75 000 1:75 000	17 May 2002
Aus 32 <b>Edition 4</b>	Australia - North Coast - Western Australia - Cambridge Gulf Plans: Wyndham Wharf Approaches to Wyndham Wharf	 1:75 000 1:7 500 1:37 500	19 April 2019
Aus 150 <b>Edition 2</b>	Australia - South Coast - Victoria - Western Port Plans: Eastern Entrance to Western Port The Narrows Rhyll	 1:75 000 1:37 500 1:10 000 1:10 000	4 June 2010
Aus 169 <b>Edition 1</b>	Australia - Tasmania - Plans in Tasmania (Sheet 3) Plans: Coles Bay Blackman Bay Georges Bay Schouten Passage	 1:15 000 1:25 000 1:25 000 1:75 000	21 January 2005
Aus 170 <b>Edition 1</b>	Australia - Tasmania - Mercury Passage	1:37 500	13 October 2006
Aus 172 <b>Edition 1</b>	Australia - Tasmania - Port of Hobart Plans: Sullivans Cove Bowen Bridge	 1:10 000 1:5 000 1:10 000	2 September 2005
Aus 174 <b>Edition 1</b>	Australia - Tasmania - Plans in Tasmania (Sheet 4) Plans: Port Huon North West Bay Port Arthur Recherche Bay Southport	 1:12 500 1:25 000 1:25 000 1:25 000 1:25 000	6 June 2008
Aus 175 <b>Edition 1</b>	Australia - Tasmania - Spring Bay including Triabunna	1:10 000	28 March 2008
Aus 726 <b>Edition 4</b>	Australia - North Coast - Western Australia - Approaches to Cambridge Gulf	1:150 000	18 April 2003

**548 AUSTRALIA - NEW SOUTH WALES - Batemans Bay - Light**

Transport for NSW

**Aus 807 [646/2020]**

Insert	accompanying block	35° 47'.0 S	150° 16'.5 E
--------	--------------------	-------------	--------------

**549 AUSTRALIA - QUEENSLAND - Booby Island to Archer River - ZOC diagram**

Australian Hydrographic Office

**Aus 301 [5/2021]**

Insert	accompanying ZOC diagram	12° 36'.0 S	142° 15'.0 E
--------	--------------------------	-------------	--------------

**550 AUSTRALIA - QUEENSLAND - Great Sandy Strait - Bookar Island - Light buoy; light beacon**

Maritime Safety Queensland Notice 212/2021

**Aus 240 [518/2021]**

Insert	starboard lateral conical light buoy, <i>Fl.G.2-5s</i> , with topmark	25° 30'.49 S	152° 58'.93 E
--------	---	--------------	---------------

Delete	light beacon	25° 30'.4 S	152° 58'.9 E
--------	--------------	-------------	--------------

**Aus 241 [234/2021]**

Insert	starboard lateral conical light buoy, <i>Fl.G.2-5s</i> , with topmark	25° 30'.49 S	152° 58'.93 E
--------	---	--------------	---------------

Delete	light beacon	25° 30'.4 S	152° 58'.9 E
--------	--------------	-------------	--------------

**551 AUSTRALIA - QUEENSLAND - Melanie Rock - Light buoy; virtual AIS**

Australian Maritime Safety Authority Final ATH 10/2021

**Aus 833 [NE 30/4/2021]**

Insert	west cardinal pillar light buoy, <i>Q(9)15s</i> , with topmark	14° 06'.3 S	144° 34'.3 E
--------	--	-------------	--------------

Delete	west cardinal virtual AIS	14° 06'.0 S	144° 34'.2 E
--------	---------------------------	-------------	--------------

**552 AUSTRALIA - WESTERN AUSTRALIA - Onslow to Port of Ashburton - Chart withdrawn; chart note; ZOC diagram**

Australian Hydrographic Office

*Note:* position of existing chart notes may vary on certain charts.**Aus 64 [58/2020]**

Insert	accompanying block B	21° 37'.0 S	115° 06'.0 E
	accompanying block A	21° 40'.0 S	115° 00'.0 E
	accompanying ZOC diagram	21° 41'.5 S	115° 06'.0 E
	accompanying chart note, ELECTRONIC NAVIGATIONAL CHART (ENC)	21° 42'.1 S	115° 12'.6 E
	accompanying chart note, RESTRICTED AREA	21° 42'.7 S	115° 12'.6 E

**553 AUSTRALIA - WESTERN AUSTRALIA - Scott Reef - Cautionary area eastwards**

Australian Hydrographic Office

*Note:* position of existing chart notes may vary on certain charts.**Aus 322 [99/2021]**

Insert	magenta dashed line with legend, <i>Cautionary Area (see Note)</i> , between	13° 49'.24 S	123° 09'.98 E
		13° 53'.25 S	123° 07'.52 E
		13° 53'.83 S	123° 07'.32 E
		13° 54'.38 S	123° 07'.29 E
		13° 55'.23 S	123° 07'.51 E
		13° 55'.97 S	123° 07'.90 E
		13° 56'.38 S	123° 08'.30 E
		13° 57'.05 S	123° 09'.98 E
	accompanying chart note, CAUTIONARY AREA AND PETROLEUM SAFETY ZONE	13° 00'.0 S	121° 15'.0 E

**554 AUSTRALIA - VICTORIA - Port Albert Entrance - Depths; nav aids**  
 Gippsland Ports Notice 136/2021

*Note:* Smaller scale charts will be updated in due course.

**Aus 181 [473/2021]**

Insert accompanying block A  
 accompanying block B

38° 44'.3 S 146° 36'.4 E  
 38° 45'.0 S 146° 41'.0 E

**555 AUSTRALIA - VICTORIA - Port Phillip - Hobsons Bay - Light buoy**

*Former Notice - 352(T)/2021 is cancelled*

Parks Victoria Notice 199/2021

**Aus 155 [367/2021]**

Delete topmark

37° 53'.17 S 144° 56'.38 E



**556(T)/2021 AUSTRALIA - NEW SOUTH WALES - Jervis Bay - Military exercise completed**

*Former Notice* - 368(T)/2021 is cancelled  
Department of Defence

Cancel this notice on receipt.

**Chart formerly affected - Aus 807 - Aus 808**

**557(T)/2021 AUSTRALIA - NEW SOUTH WALES - Stockton Bight - Survey operations completed; scientific instruments recovered**

*Former Notice* - 1043(T)/2020 is cancelled  
Port Authority of New South Wales

Cancel this notice on receipt.

**Chart formerly affected - Aus 207 - Aus 209 - Aus 489 - Aus 809 - Aus 810**

**558(T)/2021 AUSTRALIA - QUEENSLAND - Airlie Beach - Port of Airlie - Dredging operations**

Maritime Safety Queensland Notice 216(T)/2021

Dredge vessel *Classic 4* is conducting dredging operations in the vicinity of position 20° 16'.36 S 148° 43'.58 E.

The vessel will display appropriate lights and shapes and monitor VHF Ch 16.

Mariners are advised to navigate with caution in the area.

**Chart temporarily affected - Aus 269**

**559(T)/2021 AUSTRALIA - QUEENSLAND - Brisbane River - Lytton - Lights restored**

*Former Notice* - 116(T)/2019 is cancelled  
Maritime Safety Queensland

Cancel this notice on receipt.

**Chart formerly affected - Aus 237 - Aus 238**

**560(T)/2021 AUSTRALIA - QUEENSLAND - Gladstone - Fishermans Landing Wharves to Boyne Wharf - Scientific instruments**

Maritime Safety Queensland Notice 239(T)/2021

Special light buoys, *Fl. Y. 2.5s*, exist in the following positions:

23° 47'.16 S 151° 10'.46 E

23° 50'.09 S 151° 15'.92 E

23° 51'.20 S 151° 19'.15 E.

**Chart temporarily affected - Aus 245 - Aus 246**

**561(T)/2021 AUSTRALIA - QUEENSLAND - Lindeman Island - Light beacon relit**

*Former Notice* - 155(T)/2021 is cancelled  
Maritime Safety Queensland

Cancel this notice on receipt.

**Chart formerly affected - Aus 252 - Aus 254**

**562(T)/2021 AUSTRALIA - QUEENSLAND - Lucinda - Dungeness Bank - Light buoy**

Maritime Safety Queensland Notice 225(T)/2021

The special light buoy, *Fl. Y. 2s* (18° 30'.75 S 146° 19'.09 E), has been temporarily repositioned to 18° 31'.00 S 146° 19'.28 E.

The light buoy marks the current entrance to the channel.

**Chart temporarily affected - Aus 267**

**563(T)/2021 AUSTRALIA - QUEENSLAND - Rattlesnake Island - Live firing completed**

*Former Notice* - 443(T)/2021 is cancelled

Maritime Safety Queensland Notice 164(T)/2021

Cancel this notice on receipt.

**Chart formerly affected - Aus 256 - Aus 827**

**564(T)/2021 AUSTRALIA - QUEENSLAND - Schooner Rock - Light buoy off station**

Maritime Safety Queensland Notice 220(T)/2021

The north cardinal light buoy, *Q* (20° 54'.05 S 149° 25'.86 E), is off station.

**Chart temporarily affected - Aus 251 - Aus 824**

**565(T)/2021 AUSTRALIA - QUEENSLAND - Shoalwater Bay - Live firing completed**

*Former Notice* - 535(T)/2021 is cancelled

Maritime Safety Queensland Notice 210(T)/2021

Cancel this notice on receipt.

**Chart formerly affected - Aus 248 - Aus 260 - Aus 367 - Aus 490 - Aus 820 - Aus 822**

**566(T)/2021 AUSTRALIA - QUEENSLAND - Shute Harbour - Wreck salvaged**

*Former Notice* - 926(T)/2020 is cancelled

Maritime Safety Queensland

Cancel this notice on receipt.

**Chart formerly affected - Aus 269**

**567(T)/2021 AUSTRALIA - QUEENSLAND - Shute Harbour - Harbour works; lights**

*Former Notice* - 570(T)/2017 is cancelled

Maritime Safety Queensland Notice 43(T)/2017

Seawall reconstruction and pontoon refurbishment works are in progress in the vicinity of position 20° 17'.62 S 148° 47'.17 E.

The front leading light, *F. Bu (F Day)* (20° 17'.58 S 148° 47'.21 E), has been temporarily repositioned to 20° 17'.59 S 148° 47'.17 E and is unlit. The rear leading light, *F. Bu (F Day)* (20° 17'.59 S 148° 47'.14 E) is unlit.

Mariners are advised to keep clear of the works and reduce wash.

**Chart temporarily affected - Aus 252 - Aus 253 - Aus 269**

**568(T)/2021 AUSTRALIA - QUEENSLAND - Whitsunday Island - Frith Rock - Wreck salvaged**

*Former Notice* - 301(T)/2016 is cancelled

Maritime Safety Queensland

Cancel this notice on receipt.

**Chart formerly affected - Aus 252 - Aus 253 - Aus 824**

**569(T)/2021 AUSTRALIA - WESTERN AUSTRALIA - Ashburton - Dredging operations; survey operations**  
 Department of Transport WA Notice 81/2021, Pilbara Ports Authority Notice A6(T)/2021

Vessels *Juan Sebastian de Elcano*, *Bhagwan Renegade*, *Puriya* and *PHS Zephyr* are conducting dredging and survey operations in the channel (21° 36'.5 S 115° 01'.5 E) and swing basin (21° 40'.5 S 115° 00'.4 E).

Vessels will display appropriate lights and shapes and monitor VHF Ch 14 & Ch 16.

Mariners are advised to navigate with caution in the area.

**Chart temporarily affected - Aus 64**

**570(T)/2021 AUSTRALIA - WESTERN AUSTRALIA - Barrow Island - Subsea operations northwestwards completed**  
*Former Notice - 490(T)/2021 is cancelled*  
 Chevron Australia

Cancel this notice on receipt.

**Chart formerly affected - Aus 328**

**571(T)/2021 AUSTRALIA - WESTERN AUSTRALIA - City Beach - Cable laying operations; diving operations**  
 Jetwave Marine , Guardian Offshore

Vessels *Offshore Supplier*, *Jetwave Warrior* and *Jetwave Bedouin* are conducting cable laying and diving operations between the following positions:

31° 56'.25 S 115° 45'.31 E  
 31° 56'.19 S 115° 44'.54 E  
 31° 55'.69 S 115° 43'.53 E  
 31° 54'.93 S 115° 42'.70 E  
 31° 54'.46 S 115° 41'.74 E  
 31° 53'.56 S 115° 40'.52 E  
 31° 53'.28 S 115° 40'.29 E  
 31° 52'.70 S 115° 40'.03 E.

Mariners are advised to navigate with caution in the area.

**Chart temporarily affected - Aus 112 - Aus 754**

**572(T)/2021 AUSTRALIA - WESTERN AUSTRALIA - Dampier Archipelago - Subsea operations northwards completed**  
*Former Notice - 451(T)/2021 is cancelled*  
 Woodside Energy Ltd

Cancel this notice on receipt.

**Chart formerly affected - Aus 327 - Aus 4722 (INT 722) - Aus 4723 (INT 723)**

**573(T)/2021 AUSTRALIA - WESTERN AUSTRALIA - Flat Island - Drill rig moved**  
*Former Notice - 397(T)/2021 is cancelled*  
 MODU *Valaris 107*

Cancel this notice on receipt.

**Chart formerly affected - Aus 328 - Aus 744**

**574(T)/2021 AUSTRALIA - WESTERN AUSTRALIA - Garden Island - Armament Jetty - Harbour works completed**  
*Former Notice - 283(T)/2021 is cancelled*  
 Ertech , Department of Defence

Cancel this notice on receipt.

**Chart formerly affected - Aus 117 - Aus 754**

**575(T)/2021 AUSTRALIA - WESTERN AUSTRALIA - Montebello Islands - Survey operations completed**

*Former Notice* - 297(T)/2019 is cancelled  
Chevron Australia Pty Ltd

Cancel this notice on receipt.

**Chart formerly affected - Aus 327 - Aus 328 - Aus 743 - Aus 744**

**576(T)/2021 AUSTRALIA - WESTERN AUSTRALIA - Muiron Islands - Subsea operations northwestwards Santos**

On or about 1 July 2021, vessel *Skandi Hercules* is conducting subsea operations in an area bounded by the following positions:

21° 24'.92 S 114° 00'.08 E

21° 24'.92 S 114° 10'.08 E

21° 19'.92 S 114° 10'.08 E

21° 19'.92 S 114° 00'.08 E.

Mariners are advised to navigate with caution in the area.

**Chart temporarily affected - Aus 328 - Aus 329 - Aus 744**

**577(T)/2021 AUSTRALIA - VICTORIA - Lakes Entrance - Mount Barkly - Light relit**

*Former Notice* - 541(T)/2021 is cancelled  
Maritime Safety Victoria Notice 178/2021

Cancel this notice on receipt.

**Chart formerly affected - Aus 357**

**578(T)/2021 AUSTRALIA - VICTORIA - Port Fairy - Light buoy off station**

Maritime Safety Victoria Notice 164(T)/2021

The port lateral light buoy, *Fl.R.5s* (38° 22'.99 S 142° 15'.29 E), is off station.

**Chart temporarily affected - Aus 141**

**579(T)/2021 AUSTRALIA - VICTORIA - Port Phillip - Altona - Jetty**

Parks Victoria Notice 168(T)/2021

The jetty has been damaged and a portion of the jetty has washed ashore and is in position 37° 52'.27 S 144° 49'.81 E.

Submerged or semi submerged hazards may exist in the area.

The jetty is closed to all vessels and mariners are advised to navigate with caution in the area.

**Chart temporarily affected - Aus 143 - Aus 155**

**580(T)/2021 AUSTRALIA - VICTORIA - Port Phillip - Point Nepean - Light buoy restored**

*Former Notice* - 498(T)/2021 is cancelled  
Parks Victoria Notice 194/2021

Cancel this notice on receipt.

**Chart formerly affected - Aus 144**

**581(T)/2021 AUSTRALIA - TASMANIA - Flinders Island - Survey operations eastwards completed**

*Former Notice* - 464(T)/2021 is cancelled  
Australian Maritime Safety Authority

Cancel this notice on receipt.

**Chart formerly affected - Aus 357 - Aus 487 - Aus 798 - Aus 800 - Aus 4644 (INT 644)**

**582(T)/2021 AUSTRALIA - TASMANIA - Hobart - Macquarie Wharves - Harbour works**

Marine and Safety Tasmania Notice M162/2021

Vessel *Kulanda* is conducting works associated with fender replacement at Macquarie Wharf No1 (42° 52'.94 S 147° 20'.18 E).

Mariners are advised to keep a 50m clearance from the berth and to minimise wash.

**Chart temporarily affected - Aus 172**

II

**HYDROGRAPHIC REPORTS**

NIL

*To accompany Australian Notice to Mariners 552/2021*

**RESTRICTED AREA**

Unauthorised vessels and boats are not permitted in the area indicated.

*Note for chart Aus 64*

*To accompany Australian Notice to Mariners 552/2021*

**ELECTRONIC NAVIGATIONAL CHART (ENC)**

Larger scale ENC content exists in this area. When using electronic navigation systems, certain vessels (e.g. restricted by depth or size) may benefit from the additional level of detail shown in the largest scale ENC product available.

*Note for chart Aus 64*

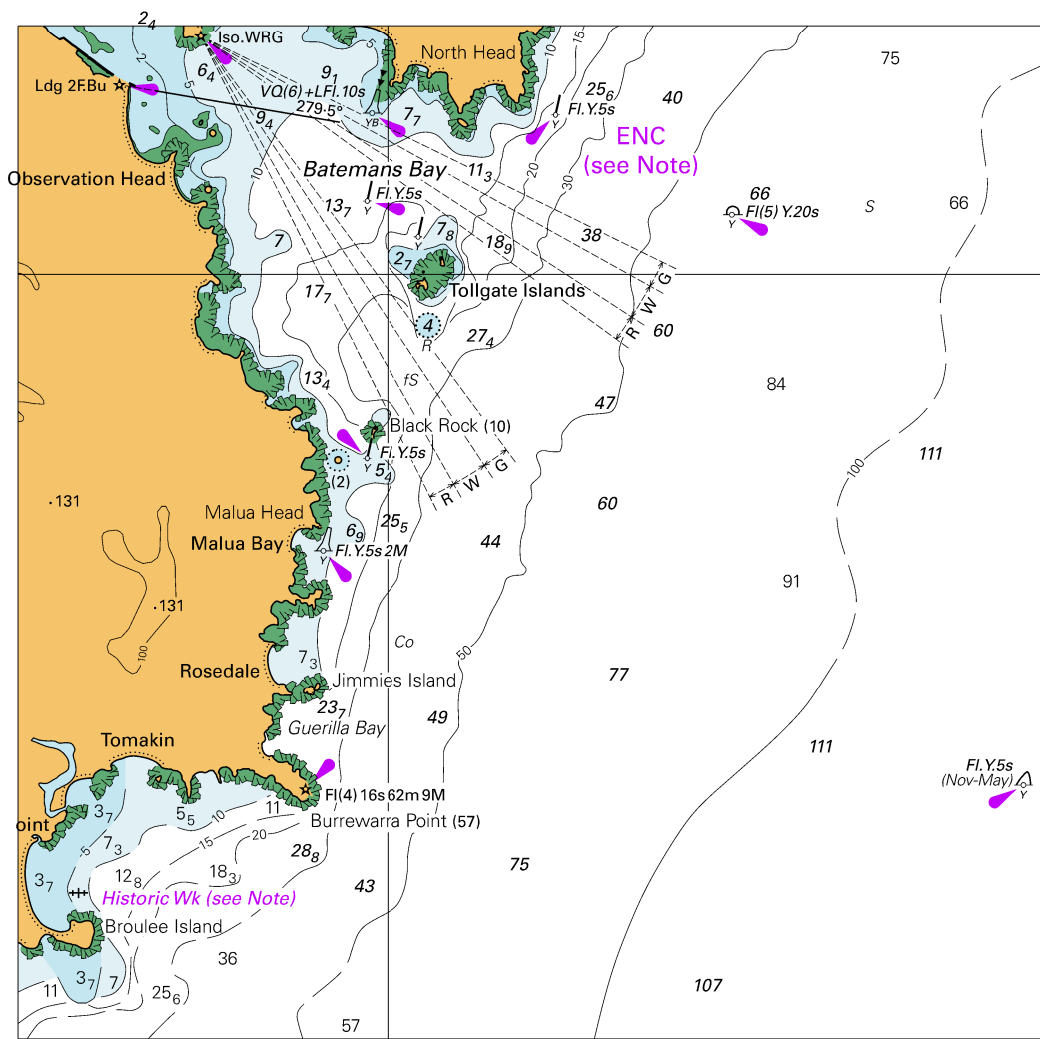
*To accompany Australian Notice to Mariners 553/2021*

**CAUTIONARY AREA AND PETROLEUM  
SAFETY ZONE**

Mariners are advised to exercise caution and allow an adequate safe distance when navigating in close proximity to offshore oil and gas structures. Within the Cautionary Area a Petroleum Safety Zone extends for a radius of 500 metres around offshore structures into which entry is prohibited to all unauthorised vessels. For details see Mariners Handbook for Australian Waters AHP 20.

*Note for chart Aus 322*

*To accompany Australian Notice to Mariners 548/2021*



*Block for chart Aus 807*

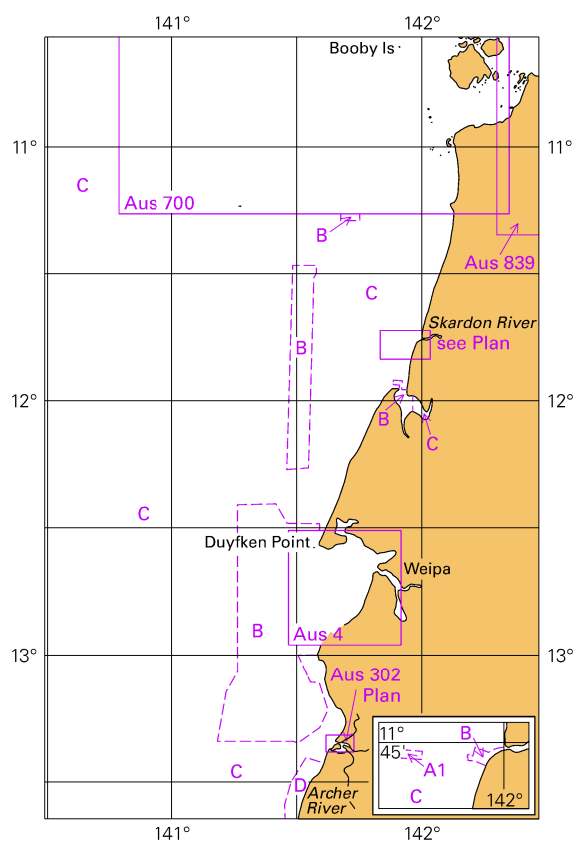
© Commonwealth of Australia 2021

(135.7 x 134.0mm)



To accompany Australian Notice to Mariners 549/2021

Zone of Confidence (ZOC) Diagram

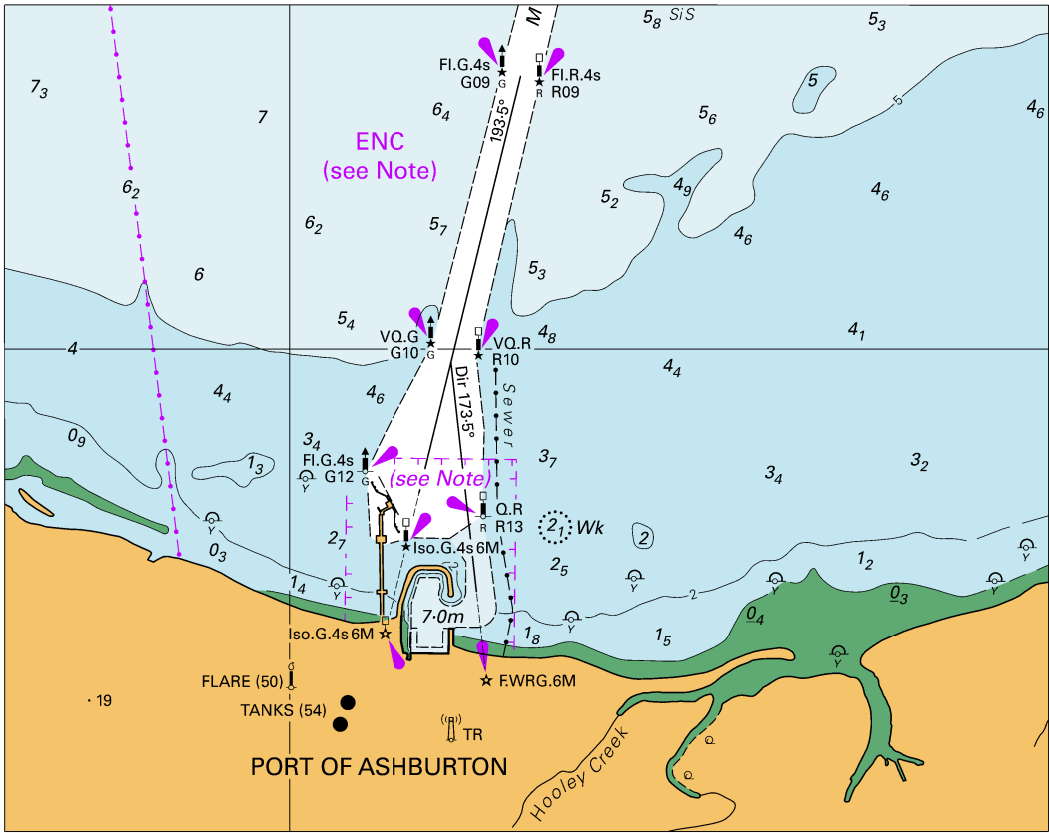


© Commonwealth of Australia 2021

Block for chart Aus 301

(65.4 x 103.7mm)

*To accompany Australian Notice to Mariners 552/2021*

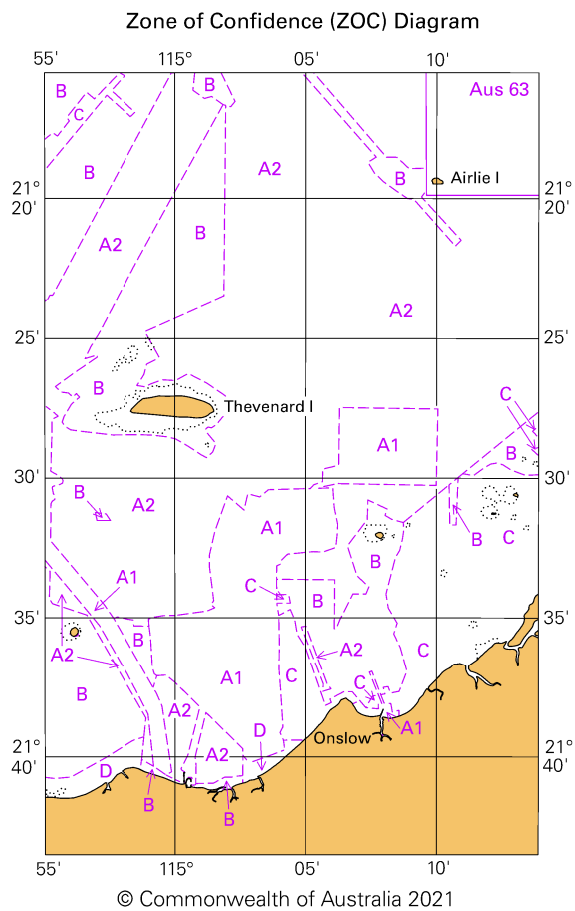


*Block A for chart Aus 64*

© Commonwealth of Australia 2021

(138.0 x 109.3mm)

To accompany Australian Notice to Mariners 552/2021

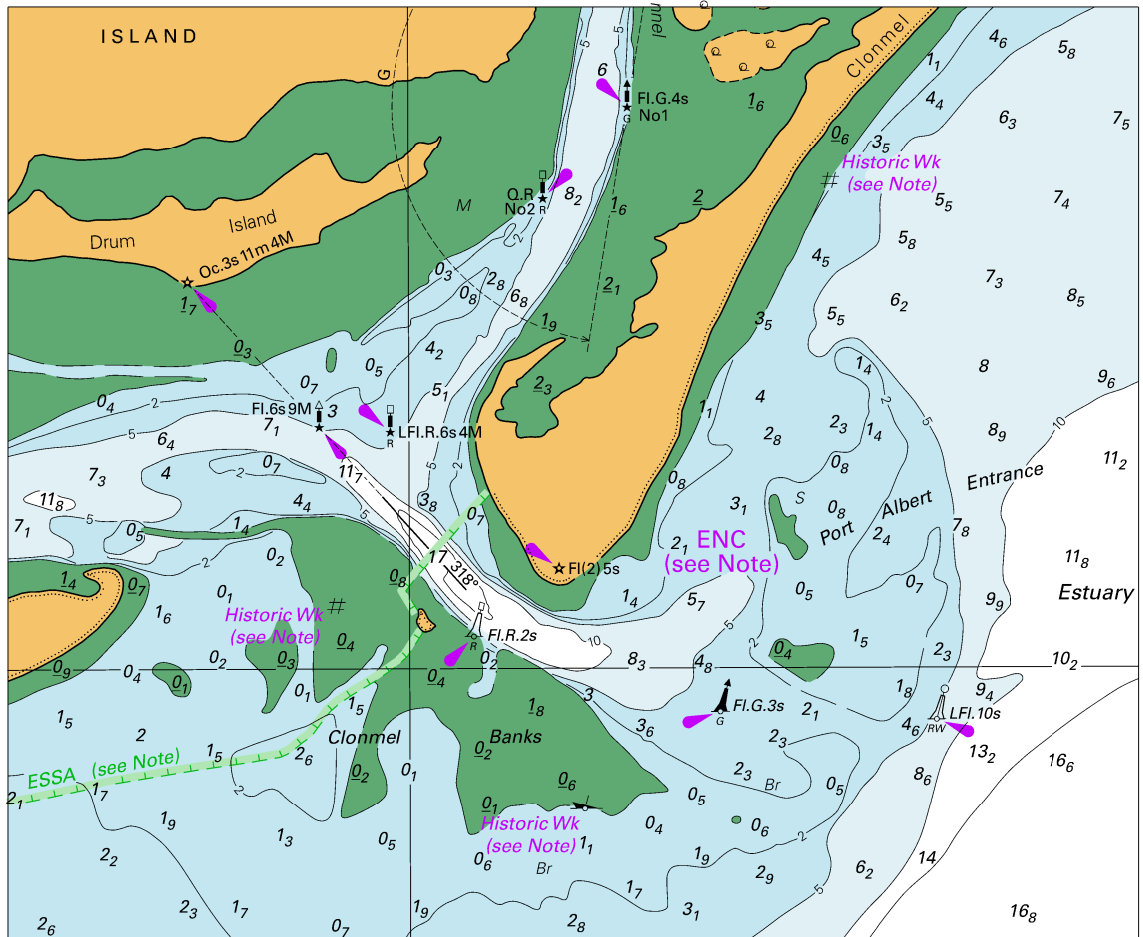


Block for chart Aus 64

(65.1 x 103.4mm)



*To accompany Australian Notice to Mariners 554/2021*

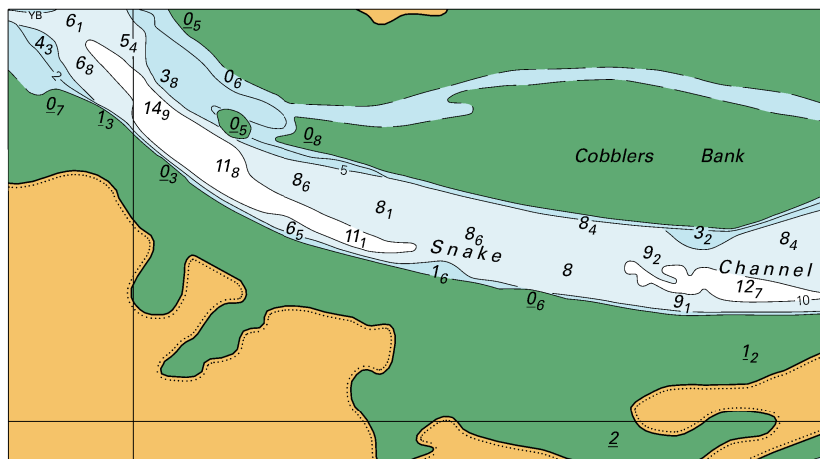


*Block B for chart Aus181*

© Commonwealth of Australia 2021

(149.5 x 123.3mm)

To accompany Australian Notice to Mariners 554/2021



Block A for chart 181

© Commonwealth of Australia 2021

(108.1 x 59.9mm)