



11 June 2021

Edition 12

AUSTRALIAN NOTICES TO MARINERS

Notices 511 - 545

Published fortnightly by the Australian Hydrographic Office



Australian Notices to Mariners are the authority for correcting charts and publications published by the Australian Hydrographic Office covering Australia, Papua New Guinea, Solomon Islands, Australian Antarctic Territory and Timor-Leste.

Commodore S.T. DUNNE RAN
Hydrographer of Australia

SECTIONS.

- I. **Australian Notices to Mariners, including blocks and notes.**
- II. **Hydrographic Reports.**

SUPPLEMENTS.

- I. **Tracings**
 - II. **Cumulative List of Australian Notices to Mariners.**
 - III. **Cumulative List of Temporary and Preliminary Australian Notices to Mariners.**
 - IV. **Temporary and Preliminary Notices in force.**
-
-

© Commonwealth of Australia 2021

This work is copyright. Apart from any use permitted under the Copyright Act 1968, no part may be reproduced by any process, adapted, communicated or commercially exploited without prior written permission from The Commonwealth represented by the Australian Hydrographic Office.

IMPORTANT NOTICE

This edition of Notices to Mariners includes all significant information affecting AHO products which the AHO has become aware of since the last edition. All reasonable efforts have been made to ensure the accuracy and completeness of the information, including third party information, on which these updates are based. The AHO regards third parties from which it receives information as reliable, however the AHO cannot verify all such information and errors may therefore exist. The AHO does not accept liability for errors in third party information.

GENERAL INSTRUCTIONS

The substance of these notices should be inserted on the charts affected.

Bearings are referred to the true compass and are reckoned clockwise from North; those relating to lights are given as seen by an observer from seaward.

Positions quoted in notices relate to WGS84 which is the horizontal datum for all charts produced by the Australian Hydrographic Office.

The range quoted for a light is its nominal range.

Depths are with reference to the chart datum of each chart. Heights are above mean high water springs or mean higher high water, as appropriate.

The capital letter (P) or (T) after the number of any notice denotes a preliminary or temporary notice respectively, which are contained separately at the end of the permanent notices.

REPORTING OF DANGERS

Mariners are particularly requested to notify the AUSTRALIAN HYDROGRAPHIC OFFICE, Locked Bag 8801 Wollongong, NSW 2500 (e-mail datacentre@hydro.gov.au or, alternatively by filling in and submitting the [Hydrographic Notes](#) forms located on the web site – www.hydro.gov.au), immediately on the discovery of new dangers or suspected dangers to navigation. For changes or defects in aids to navigation notify AusSAR (Fax 02-6230 6868 or email rccaus@amsa.gov.au).

AUTHORISED USE

Copies of Australian notices are available free of charge from the Australian Hydrographic Office (AHO) website (www.hydro.gov.au) and through the eNotices (email) service (www.hydro.gov.au/enotices/enotices.htm).

Individual Notices may be copied for the purpose of inserting Notice substance on official charts and publications. Paper copies may be printed by chart agents and distributed to customers on a cost recovery basis. Participating chart agents are listed on the AHO website as providing a 'Paper Notices to Mariners' service (www.hydro.gov.au/webapps/jsp/agents/agents-list.jsp). Copies of the notices may not be sold for profit without prior written agreement.

NUMERICAL INDEX OF NOTICES TO MARINERS

Edition No 12

Notices	Aus Chart, INT Chart, ENC Cell, AHP, BA Pubs
511	Aus 177
512	Aus 13, 32, 69, 150, 169, 170, 172, 174, 175, 726
513	Amendment to Australian National Tide Tables 2021
514	Aus 240, 815, 817, 4635, INT 635
515	Aus 816, 817
516	Aus 245, 246
517	Aus 821, 4620, 4621, INT 620, 621
518	Aus 240
519	PNG 519, 520
520	Aus 117
521	Aus 40, 41
522	Aus 53, 326
523(T)	Aus 200
524(T)	Aus 200
525(T)	Aus 238
526(T)	Aus 238
527(T)	Aus 238
528(T)	Aus 238
529(T)	Aus 834
530(T)	Aus 241, 817
531(T)	Aus 249, 250, 823
532(T)	Aus 236
533(T)	Aus 236
534(T)	Aus 829, 830
535(T)	Aus 248, 260, 367, 490, 820, 822
536(T)	Aus 4, 301
537(T)	PNG 396, 547, 674
538(T)	Aus 319, 320, 322, 4721, 4722, INT 721, 722
539(T)	Aus 328
540(T)	Aus 64, 743
541(T)	Aus 357
542(T)	Aus 143, 155
543(T)	Aus 154
544(T)	Aus 144
545(T)	Aus 150, 151

NUMERICAL INDEX OF CHARTS AFFECTED

Edition No 12

Aus Chart	Notices
Aus 4	536(T)
Aus 13	512
Aus 32	512
Aus 40	521
Aus 41	521
Aus 53	522
Aus 64	540(T)
Aus 69	512
Aus 117	520
Aus 143	542(T)
Aus 144	544(T)
Aus 150	512, 545(T)
Aus 151	545(T)
Aus 154	543(T)
Aus 155	542(T)
Aus 169	512
Aus 170	512
Aus 172	512
Aus 174	512
Aus 175	512
Aus 177	511
Aus 200	523(T), 524(T)
Aus 236	532(T), 533(T)
Aus 238	525(T), 526(T), 527(T), 528(T)
Aus 240	514, 518
Aus 241	530(T)
Aus 245	516
Aus 246	516
Aus 248	535(T)
Aus 249	531(T)
Aus 250	531(T)
Aus 260	535(T)
Aus 301	536(T)
Aus 319	538(T)
Aus 320	538(T)
Aus 322	538(T)
Aus 326	522
Aus 328	539(T)
Aus 357	541(T)
Aus 367	535(T)
Aus 490	535(T)
Aus 726	512
Aus 743	540(T)
Aus 815	514
Aus 816	515
Aus 817	514, 515, 530(T)
Aus 820	535(T)
Aus 821	517
Aus 822	535(T)
Aus 823	531(T)
Aus 829	534(T)
Aus 830	534(T)
Aus 834	529(T)
Aus 4620	517

Aus Chart	Notices
Aus 4621	517
Aus 4635	514
Aus 4721	538(T)
Aus 4722	538(T)
PNG 396	537(T)
PNG 519	519
PNG 520	519
PNG 547	537(T)
PNG 674	537(T)

INT Chart	Notices
INT 620	517
INT 621	517
INT 635	514
INT 721	538(T)
INT 722	538(T)

511 AUSTRALIA - Products - New Charts, New Editions, Withdrawn Charts

Australian Hydrographic Office

New Charts

<i>Chart</i>	<i>Title and Geographical limits</i>	<i>Scale</i>	<i>Publication Date</i>	<i>Remarks</i>
NIL				

New Electronic Navigation Chart (Aus ENC)

<i>Cell Name</i>	<i>Title</i>	<i>Scale</i>	<i>Publication Date</i>	<i>Remarks</i>
AU5PTI01	Queensland - Great Barrier Reef - Port Douglas		3 June 2021	AU5270P1 has been withdrawn.
AU5GLT01	Australia - Queensland - Gladstone and approaches		3 June 2021	AU5245X6 has been withdrawn.
AU5CQP01	Queensland - Great Barrier Reef - Cape Flattery Wharf		3 June 2021	AU5270P5 has been withdrawn.
AU5CTN01	Queensland - Great Barrier Reef - Cooktown		3 June 2021	AU5270P6 has been withdrawn.
PG408143	Papua New Guinea - Gulf of Papua - Turama River		10 June 2021	AU408143 has been withdrawn.
PG406149	Papua New Guinea - New Britain - Willaumez Peninsula to Hook Reef		10 June 2021	AU406149 has been withdrawn.
PG406151	Papua New Guinea - New Britain - Cape Beechy to Cape Kwoi		10 June 2021	AU406151 has been withdrawn.
PG406152	Papua New Guinea - Solomon Sea - Southern Approach to St Georges Channel		10 June 2021	AU406152 has been withdrawn.
PG407154	Papua New Guinea - Bougainville - Western Approaches to Empress Augusta Bay		10 June 2021	AU407154 has been withdrawn.
PG404152	Papua New Guinea - New Ireland - Cape Sena to Cape Lemeris including Lihir Island			AU409149 has been withdrawn.

New Editions and Withdrawn Charts

<i>Chart</i>	<i>Title</i>	<i>Scale</i>	<i>Publication Date</i>	<i>Remarks</i>
Aus 177 (Edition 2)	Australia - Tasmania - Approaches to Macquarie Harbour	1:75 000	11 June 2021	New edition with general updating throughout; including the removal of plans Hells Gates and Strahan. Chart Aus 177 Edition 1 dated 31 August 2001 is now superseded and must be withdrawn from use.

Chart permanently withdrawn

Charts listed above as withdrawn no longer meet chart carriage requirements and should be marked as "superseded" and replaced with the new chart/ new edition listed prior to passage through the area covered by the new chart.

When placing orders with a chart agent between notice of forthcoming edition and its publication, mariners should advise whether their order pertains to the current edition or the new edition.

For further details refer to the AHO website at www.hydro.gov.au for new edition and new chart stock arrival information.

512 AUSTRALIA - Products - New Charts and New Editions to be published shortly

Australian Hydrographic Office

New Charts to be published shortly

<i>Chart</i>	<i>Title</i>	<i>Scale</i>	<i>Remarks</i>
NIL			

New Editions to be published shortly

<i>Chart</i>	<i>Title</i>	<i>Scale</i>	<i>Remarks</i>
Aus 171	Australia - South Coast - Tasmania - Hobart to Norfolk Bay Inset: Bowen Bridge	1:50 000	New edition with general updating throughout; including the addition of inset Bowen Bridge.

Charts to be withdrawn without replacement 25 June 2021

<i>Chart</i>	<i>Title</i>	<i>Scale</i>	<i>Publication Date</i>
Aus 13 Edition 1	Australia - North Coast - Plans in Northern Territory (Sheet 1) Plans: Bing Bong Bickerton Island Port Langdon	 1:12 500 1:75 000 1:75 000	17 May 2002
Aus 69 Edition 1	Australia - North West Coast - Western Australia - Plans of Port of Ashburton and Onslow Plans: Port of Ashburton Onslow	 1:10 000 1:12 500	18 December 2015
Aus 150 Edition 2	Australia - South Coast - Victoria - Western Port Plans: Eastern Entrance to Western Port The Narrows Rhyll	 1:75 000 1:37 500 1:10 000 1:10 000	4 June 2010
Aus 169 Edition 1	Australia - Tasmania - Plans in Tasmania (Sheet 3) Plans: Coles Bay Blackman Bay Georges Bay Schouten Passage	 1:15 000 1:25 000 1:25 000 1:75 000	21 January 2005
Aus 170 Edition 1	Australia - Tasmania - Mercury Passage	1:37 500	13 October 2006
Aus 172 Edition 1	Australia - Tasmania - Port of Hobart Plans: Sullivans Cove Bowen Bridge	 1:10 000 1:5 000 1:10 000	2 September 2005
Aus 174 Edition 1	Australia - Tasmania - Plans in Tasmania (Sheet 4) Plans: Port Huon North West Bay Port Arthur Recherche Bay Southport	 1:12 500 1:25 000 1:25 000 1:25 000 1:25 000	6 June 2008
Aus 175 Edition 1	Australia - Tasmania - Spring Bay including Triabunna	1:10 000	28 March 2008

512 AUSTRALIA - Products - New Charts and New Editions to be published shortly**Charts to be withdrawn without replacement 9 July 2021**

Aus 32 Edition 4	Australia - North Coast - Western Australia - Cambridge Gulf Plans: Wyndham Wharf Approaches to Wyndham Wharf	1:75 000 1:7 500 1:37 500	19 April 2019
Aus 726 Edition 4	Australia - North Coast - Western Australia - Approaches to Cambridge Gulf	1:150 000	18 April 2003

513 AUSTRALIA - Product - Amendment to Australian National Tide Tables 2021

Australian Hydrographic Office

ANTT 2021

Page 340 <i>Amend</i>	PARSONS BANK To Chart Datum 0.2 to 0.0
Page 357 <i>Amend</i>	NEWCASTLE Correction to Chart Datum AUS 207 NE 28 MAY 2021 0.0
Page 358 <i>Amend</i>	ONSLOW Correction to Chart Datum ENC AU5069P1 to AU5ONS01
Page 359 <i>Delete</i>	PORT PHILLIP HEADS Correction to Chart Datum AUS 158 NE 19 DEC 2014 0.0
Page 360 <i>Amend</i>	SYDNEY Correction to Chart Datum ENC AU5200PE to AU5SYD01 SYDNEY Correction to Chart Datum AUS 200 NE 28 MAY 2021 0.0

514 AUSTRALIA - QUEENSLAND - Double Island Point - Light

Australian Maritime Safety Authority Final ATH 9/2021

Aus 240 [425/2021] Amend light range to 15M	25° 56'.0 S	153° 11'.4 E
Aus 815 [231/2021] Amend light range to 15M	25° 56'.0 S	153° 11'.4 E
Aus 817 [142/2021] Amend light range to 15M	25° 56'.0 S	153° 11'.4 E
Aus 4635 (INT 635) [901/2020] Amend light range to 15M	25° 56'.0 S	153° 11'.4 E

515 AUSTRALIA - QUEENSLAND - Fraser Island - Waddy Point to Rooney Point - Scientific instruments

Department of Agriculture and Fisheries

Aus 816 [142/2021] Insert special conical light buoy, <i>Fl. Y. 3s FAD</i> , without topmark	24° 37'.90 S	153° 24'.35 E
special conical light buoy, <i>Fl. Y. 3s FAD</i> , without topmark	24° 48'.76 S	153° 06'.15 E
special conical light buoy, <i>Fl. Y. 3s FAD</i> , without topmark	24° 58'.06 S	153° 32'.67 E
Aus 817 [514/2021] Insert special conical light buoy, <i>Fl. Y. 3s FAD</i> , without topmark	24° 48'.76 S	153° 06'.15 E

516 AUSTRALIA - QUEENSLAND - Gladstone - Gatcombe Channel - Light buoy

Australian Hydrographic Office

Aus 245 [470/2021]

Replace	light buoy with starboard lateral pillar light buoy, <i>Fl.G.4s G1</i> , with topmark	23° 52'.91 S	151° 21'.87 E
---------	---	--------------	---------------

Aus 246 [470/2021]

Replace	light buoy with starboard lateral pillar light buoy, <i>Fl.G.4s G1</i> , with topmark	23° 52'.91 S	151° 21'.87 E
---------	---	--------------	---------------

517 AUSTRALIA - QUEENSLAND - Great Barrier Reef - Wackett Reef - Shoal areas

Australian Hydrographic Office

Aus 821 [687/2019]

Delete	shoal area, centred on	19° 53'.8 S	150° 03'.8 E
	shoal area, centred on	19° 55'.5 S	150° 03'.3 E

Aus 4620 (INT 620) [901/2020]

Delete	shoal area, centred on	19° 55'.0 S	150° 03'.5 E
--------	------------------------	-------------	--------------

Aus 4621 (INT 621) [905/2020]

Delete	shoal area, centred on	19° 55'.0 S	150° 03'.5 E
--------	------------------------	-------------	--------------

518 AUSTRALIA - QUEENSLAND - Great Sandy Strait - Tin Can Bay - Kauri Creek - Navais

Maritime Safety Queensland Notice 193/2021

Aus 240 [514/2021]

Insert	port lateral spar buoy without topmark	25° 47'.59 S	152° 59'.45 E
	port lateral spar buoy without topmark	25° 47'.63 S	152° 59'.24 E

Replace	beacon with port lateral spar buoy without topmark	25° 47'.5 S	153° 00'.1 E
---------	--	-------------	--------------

Delete	beacon	25° 47'.6 S	152° 59'.5 E
	beacon	25° 47'.7 S	152° 59'.3 E

519 PAPUA NEW GUINEA - Collingwood Bay - Wanigela Reef to Hardy Point - Beacons

National Maritime Safety Authority PNG

PNG 519 [238/2021]

Delete	beacon	9° 10'.6 S	149° 19'.5 E
--------	--------	------------	--------------

PNG 520 [238/2021]

Delete	beacon	9° 10'.6 S	149° 19'.5 E
	beacon	9° 16'.0 S	149° 15'.1 E
	beacon	9° 17'.0 S	149° 14'.2 E
	beacon	9° 17'.1 S	149° 14'.3 E
	beacon	9° 17'.3 S	149° 14'.1 E
	beacon	9° 17'.5 S	149° 14'.2 E
	beacon	9° 17'.8 S	149° 13'.8 E
	beacon	9° 18'.2 S	149° 13'.8 E
	beacon	9° 18'.6 S	149° 13'.9 E
	beacon	9° 18'.9 S	149° 14'.0 E
	beacon	9° 18'.9 S	149° 13'.7 E
	beacon	9° 19'.5 S	149° 12'.8 E
	beacon	9° 19'.7 S	149° 12'.9 E
	beacon	9° 20'.1 S	149° 12'.0 E
	beacon	9° 20'.2 S	149° 11'.6 E
	beacon	9° 21'.0 S	149° 11'.5 E

520 AUSTRALIA - WESTERN AUSTRALIA - Garden Island - Infrastructure; depth

Ertech , Department of Defence

Aus 117 [364/2021]

Insert	continuous line, between	32° 10'.555 S	115° 40'.830 E
		32° 10'.443 S	115° 40'.921 E
Delete	spoil ground, centred on depth, 7,m, and enclosing contour	32° 10'.51 S	115° 40'.93 E
		32° 10'.52 S	115° 40'.95 E

521 AUSTRALIA - WESTERN AUSTRALIA - Koolan Island - Nav aids; pipeline

Trinacria Consulting

Aus 40 [315/2021]

Insert	pipeline, between	16° 08'.487 S	123° 44'.607 E
		16° 08'.521 S	123° 44'.588 E
Delete	pipeline, between	16° 08'.51 S	123° 44'.63 E
		16° 08'.53 S	123° 44'.59 E

Aus 41 (Koolan Island) [315/2021]

Insert	accompanying block	16° 08'.55 S	123° 44'.55 E
--------	--------------------	--------------	---------------

522 AUSTRALIA - WESTERN AUSTRALIA - Port Hedland - Port limit

Pilbara Ports Authority Notice 7/2021

Aus 53 [45/2021]

Insert	magenta dashed line with legend, <i>Port Hedland Port Limit</i> , between	20° 11'.14 S	118° 27'.09 E
		20° 10'.38 S	118° 23'.75 E
		19° 59'.74 S	118° 21'.30 E
		19° 56'.28 S	118° 26'.54 E
		19° 54'.28 S	118° 26'.53 E
		19° 54'.25 S	118° 29'.12 E
		19° 56'.26 S	118° 29'.14 E
		20° 02'.26 S	118° 33'.44 E
		20° 02'.27 S	118° 38'.60 E
Delete	magenta dashed line with legend, <i>Port Hedland Port Limit</i> , between	20° 11'.1 S	118° 27'.1 E
		20° 08'.5 S	118° 32'.1 E
		20° 09'.0 S	118° 38'.6 E

Aus 326 [NE 26/6/2020]

Insert	magenta dashed line with legend, <i>Port Hedland Port Limit</i> , between	20° 09'.32 S	118° 39'.39 E
		20° 02'.27 S	118° 39'.39 E
		20° 02'.26 S	118° 33'.44 E
		19° 56'.26 S	118° 29'.14 E
		19° 54'.25 S	118° 29'.12 E
		19° 54'.28 S	118° 26'.53 E
		19° 56'.28 S	118° 26'.54 E
		19° 59'.74 S	118° 21'.30 E
		20° 10'.38 S	118° 23'.75 E
		20° 11'.14 S	118° 27'.09 E
Delete	magenta dashed line with legend, <i>Port Hedland Port Limit</i> , between	20° 09'.3 S	118° 39'.4 E
		20° 08'.5 S	118° 32'.1 E
		20° 11'.1 S	118° 27'.1 E

523(T)/2021 AUSTRALIA - NEW SOUTH WALES - Port Jackson - Fort Denison - Light buoys
Port Authority of New South Wales Notice 14/2021

Seabed mooring blocks marked by light buoys exist in the following positions:

33° 51'.29 S 151° 13'.48 E
33° 51'.25 S 151° 13'.47 E
33° 51'.26 S 151° 13'.49 E
33° 51'.27 S 151° 13'.51 E
33° 51'.25 S 151° 13'.53 E.

Chart temporarily affected - Aus 200

524(T)/2021 AUSTRALIA - NEW SOUTH WALES - Port Jackson - Chowder Bay - Scientific instruments
Department of Defence

Subsurface scientific instruments, 2m above seabed, exist in the following positions:

33° 50.44' S 151° 15.38' E
33° 50.41' S 151° 15.39' E
33° 50.42' S 151° 15.42' E.

The area will be marked by buoys.

Mariners are advised to navigate with caution in the area.

Chart temporarily affected - Aus 200

525(T)/2021 AUSTRALIA - QUEENSLAND - Brisbane River - Bulimba Reach - Cutters Landing - Harbour works
Maritime Safety Queensland Notice 194(T)/2021

Barges *Enviro 3*, *Enviro 4*, *Enviro 8* and support vessels are conducting revetment wall repair works in the vicinity of position 27° 27'.90 S 153° 03'.15 E.

The work area is marked by special light buoys.

The barges will display appropriate lights and shapes.

Mariners are advised to navigate with in the area.

Chart temporarily affected - Aus 238

526(T)/2021 AUSTRALIA - QUEENSLAND - Brisbane River - Quarries Reach - Wreck salvaged
Former Notice - 169(T)/2019 is cancelled
Maritime Safety Queensland

Cancel this notice on receipt.

Chart formerly affected - Aus 238

527(T)/2021 AUSTRALIA - QUEENSLAND - Brisbane River - Town Reach - Harbour works completed
Former Notice - 484(T)/2019 is cancelled
Maritime Safety Queensland

Cancel this notice on receipt.

Chart formerly affected - Aus 238

528(T)/2021 AUSTRALIA - QUEENSLAND - Brisbane River - South Brisbane Reach - Harbour works

Former Notice - 476(T)/2021 is cancelled

Maritime Safety Queensland Notice 397(T)/2020, 175(T)/2021, 202(T)/2021

Works associated with the construction of the Queens Wharf Brisbane are in progress on the northern shoreline between starboard lateral light buoys, *Fl.G.2-5s*, in positions 27° 28'.29 S 153° 01'.28 E and 27° 28'.66 S 153° 01'.53 E.

Construction of a bridge pier is in progress in position 27° 28'.48 S 153° 01'.35 E.

Flashing yellow lights will mark any hazards to navigation and piles when left unattended during phases of construction.

All vessels will display appropriate lights and shapes, and will monitor VHF Ch 12, Ch 13 and Ch 16.

Works at South Bank 1 (27° 28'.55 S 153° 01'.34 E) and South Bank 2 (27° 28'.57 S 153° 01'.35 E) Ferry Terminals are in progress. JUB 3 is in position 27° 28'.56 S 153° 01'.35 E and is marked by flashing yellow lights.

Mariners are advised to navigate with caution in the area.

Chart temporarily affected - Aus 238**529(T)/2021 AUSTRALIA - QUEENSLAND - Great Barrier Reef - Hudson Patches - Light beacon relit**

Former Notice - 440(T)/2021 is cancelled

Australian Maritime Safety Authority

Cancel this notice on receipt.

Chart formerly affected - Aus 834**530(T)/2021 AUSTRALIA - QUEENSLAND - Great Sandy Strait - Dayman Point - Scientific instruments**

Former Notice - 441(T)/2021 is cancelled

Maritime Safety Queensland Notice 205(T)/2021

Subsurface scientific instruments exist in positions 25° 17'.01 S 152° 54'.66 E and 25° 14'.68 S 152° 53'.46 E.

Chart temporarily affected - Aus 241 - Aus 817**531(T)/2021 AUSTRALIA - QUEENSLAND - Hay Point - Light beacon maintenance works**

Maritime Safety Queensland Notice 199(T)/2021

Vessel *PMG Pride* and barge *PMG151* are conducting light beacon maintenance works in the Departure Channel (21° 15'.39 S 149° 22'.76 E).

The barge will deploy anchors marked by special light buoys.

Vessels will monitor VHF Ch 10 and Ch 16.

Mariners are advised to navigate with caution in the area.

Chart temporarily affected - Aus 249 - Aus 250 - Aus 823**532(T)/2021 AUSTRALIA - QUEENSLAND - Moreton Bay - North Stradbroke Island - Polka Point - Wreck salvaged**

Former Notice - 114(T)/2021 is cancelled

Maritime Safety Queensland

Cancel this notice on receipt.

Chart formerly affected - Aus 236

533(T)/2021 AUSTRALIA - QUEENSLAND - Moreton Bay - Rainbow Channel - Wreck salvaged

Former Notice - 157(T)/2021 is cancelled
Maritime Safety Queensland

Cancel this notice on receipt.

Chart formerly affected - Aus 236**534(T)/2021 AUSTRALIA - QUEENSLAND - Russell Island - Light unreliable**

Australian Maritime Safety Authority Auscoast Warning 105/2021

The light, *F(2)10s 76m 11M* (17° 13'.74 S 146° 05'.70 E), is unreliable.

Chart temporarily affected - Aus 829 - Aus 830**535(T)/2021 AUSTRALIA - QUEENSLAND - Shoalwater Bay - Live firing**

Maritime Safety Queensland Notice 210(T)/2021

Live firing will be conducted in the marine component of the Shoalwater Bay training area during the period 14 to 18 June 2021.

A marine danger area extends to all internal waters bounded by the following positions:

22° 21'.20 S 150° 10'.52 E
 22° 35'.87 S 150° 28'.80 E
 22° 46'.20 S 150° 48'.51 E
 22° 41'.12 S 150° 50'.17 E
 22° 32'.22 S 150° 47'.36 E
 22° 28'.50 S 150° 45'.29 E
 22° 20'.36 S 150° 43'.10 E
 22° 17'.71 S 150° 33'.66 E
 22° 22'.58 S 150° 30'.40 E
 22° 31'.07 S 150° 34'.01 E
 22° 33'.77 S 150° 33'.27 E
 22° 20'.35 S 150° 12'.00 E.

All waters, creeks, beaches and other areas within the declared marine danger area are not available for access.

Safe anchorage is not available, however during adverse weather conditions safe anchorage may be approved by Defence. Contact the Coast Guard for them to request approval.

Mariners are advised to keep clear of this area throughout the above times.

Chart temporarily affected - Aus 248 - Aus 260 - Aus 367 - Aus 490 - Aus 820 - Aus 822**536(T)/2021 AUSTRALIA - QUEENSLAND - Weipa - Dredging operations completed**

Former Notice - 384(T)/2021 is cancelled
Maritime Safety Queensland

Cancel this notice on receipt.

Chart formerly affected - Aus 4 - Aus 301**537(T)/2021 PAPUA NEW GUINEA - New Britain - Buluma - Light beacon relit**

Former Notice - 446(T)/2021 is cancelled
National Maritime Safety Authority PNG Coastal Navigation Warning 14/2021

Cancel this notice on receipt.

Chart formerly affected - PNG 396 - PNG 547 - PNG 674

538(T)/2021 AUSTRALIA - WESTERN AUSTRALIA - Browse Island - Drill rig northwestwards

Former Notice - 875(T)/2020 is cancelled

Australian Maritime Safety Authority Auscoast Warning 109/2021

Drill rig *Maersk Deliverer* is conducting drilling operations in position 13° 58'.00 S 123° 08'.69 E.

Chart temporarily affected - Aus 319 - Aus 320 - Aus 322 - Aus 4721 (INT 721) - Aus 4722 (INT 722)

539(T)/2021 AUSTRALIA - WESTERN AUSTRALIA - Montebello Islands - Subsea operations northwestwards

Woodside Energy Ltd

On or about 17 June 2021, MV *Deep Orient* and support vessels are conducting subsea operations between positions 19° 49'.67 S 115° 10'.58 E and 19° 58'.28 S 115° 12'.74 E.

Chart temporarily affected - Aus 328

540(T)/2021 AUSTRALIA - WESTERN AUSTRALIA - Port of Ashburton - Light buoy off station

Pilbara Ports Authority

The special light buoy, *Fl(5)Y.20s* (21° 32'.46 S 115° 01'.98 E), is off station and currently in position 21° 32'.23 S 115° 01'.58 E.

Chart temporarily affected - Aus 64 - Aus 743

541(T)/2021 AUSTRALIA - VICTORIA - Lakes Entrance - Mount Barkly - Light unlit

Maritime Safety Victoria Notice 161(T)/2021

The light, *Oc.4s 12M* (37° 52'.84 S 147° 57'.85 E), is unlit.

Chart temporarily affected - Aus 357

542(T)/2021 AUSTRALIA - VICTORIA - Port Phillip - Sandringham - Dredging operations

Parks Victoria Notice 143(T)/2021

Dredging operations are in progress in the vicinity of position 37° 58'.0 S 145° 00'.2 E.

A dredge and support vessels are on site.

The dredge material will be deposited for beach renourishment along Edward Street Beach (37° 57'.35 S 145° 00'.34 E) and in Half Moon Bay (37° 58'.13 S 145° 00'.64 E).

All hazards to navigation will be marked by appropriate lights and shapes.

Mariners are advised to navigate with caution in the area.

Chart temporarily affected - Aus 143 - Aus 155

543(T)/2021 AUSTRALIA - VICTORIA - Port Phillip - Webb Dock - Harbour works completed

Former Notice - 1061(T)/2020 is cancelled

Victorian Ports Corporation (Melbourne) Notice 129/2021

Cancel this notice on receipt.

Chart formerly affected - Aus 154

544(T)/2021 AUSTRALIA - VICTORIA - Port Phillip - Weeroona Bay - Light buoy off station

Parks Victoria Notice 151(T)/2021

The special light buoy, *Fl.Y.5s* (38° 18'.82 S 144° 42'.75 E), is off station.

Chart temporarily affected - Aus 144

545(T)/2021 AUSTRALIA - VICTORIA - Western Port - Tooradin - Light beacon relit
Former Notice - 417(T)/2021 is cancelled
Parks Victoria Notice 152/2021

Cancel this notice on receipt.

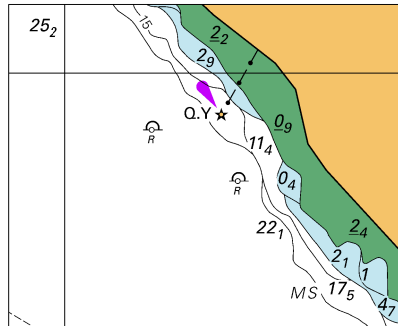
Chart formerly affected - Aus 150 - Aus 151

II

HYDROGRAPHIC REPORTS

NIL

To accompany Australian Notice to Mariners 521/2021



© Commonwealth of Australia 2021
Block for chart Aus 41 (52.4 x 42.6mm)