



14 May 2021

Edition 10

AUSTRALIAN NOTICES TO MARINERS

Notices 419 - 464

Published fortnightly by the Australian Hydrographic Office



Australian Notices to Mariners are the authority for correcting charts and publications published by the Australian Hydrographic Office covering Australia, Papua New Guinea, Solomon Islands, Australian Antarctic Territory and Timor-Leste.

Commodore S.T. DUNNE RAN
Hydrographer of Australia

SECTIONS.

- I. **Australian Notices to Mariners, including blocks and notes.**
- II. **Hydrographic Reports.**

SUPPLEMENTS.

- I. **Tracings**
 - II. **Cumulative List of Australian Notices to Mariners.**
 - III. **Cumulative List of Temporary and Preliminary Australian Notices to Mariners.**
 - IV. **Temporary and Preliminary Notices in force.**
-
-

© Commonwealth of Australia 2021

This work is copyright. Apart from any use permitted under the Copyright Act 1968, no part may be reproduced by any process, adapted, communicated or commercially exploited without prior written permission from The Commonwealth represented by the Australian Hydrographic Office.

IMPORTANT NOTICE

This edition of Notices to Mariners includes all significant information affecting AHO products which the AHO has become aware of since the last edition. All reasonable efforts have been made to ensure the accuracy and completeness of the information, including third party information, on which these updates are based. The AHO regards third parties from which it receives information as reliable, however the AHO cannot verify all such information and errors may therefore exist. The AHO does not accept liability for errors in third party information.

GENERAL INSTRUCTIONS

The substance of these notices should be inserted on the charts affected.

Bearings are referred to the true compass and are reckoned clockwise from North; those relating to lights are given as seen by an observer from seaward.

Positions quoted in notices relate to WGS84 which is the horizontal datum for all charts produced by the Australian Hydrographic Office.

The range quoted for a light is its nominal range.

Depths are with reference to the chart datum of each chart. Heights are above mean high water springs or mean higher high water, as appropriate.

The capital letter (P) or (T) after the number of any notice denotes a preliminary or temporary notice respectively, which are contained separately at the end of the permanent notices.

REPORTING OF DANGERS

Mariners are particularly requested to notify the AUSTRALIAN HYDROGRAPHIC OFFICE, Locked Bag 8801 Wollongong, NSW 2500 (e-mail datacentre@hydro.gov.au or, alternatively by filling in and submitting the [Hydrographic Notes](#) forms located on the web site – www.hydro.gov.au), immediately on the discovery of new dangers or suspected dangers to navigation. For changes or defects in aids to navigation notify AusSAR (Fax 02-6230 6868 or email rccaus@amsa.gov.au).

AUTHORISED USE

Copies of Australian notices are available free of charge from the Australian Hydrographic Office (AHO) website (www.hydro.gov.au) and through the eNotices (email) service (www.hydro.gov.au/enotices/enotices.htm).

Individual Notices may be copied for the purpose of inserting Notice substance on official charts and publications. Paper copies may be printed by chart agents and distributed to customers on a cost recovery basis. Participating chart agents are listed on the AHO website as providing a 'Paper Notices to Mariners' service (www.hydro.gov.au/webapps/jsp/agents/agents-list.jsp). Copies of the notices may not be sold for profit without prior written agreement.

NUMERICAL INDEX OF NOTICES TO MARINERS

Edition No 10

Notices	Aus Chart, INT Chart, ENC Cell, AHP, BA Pubs
419	Products - New Charts, New Editions, Withdrawn Charts
420	Aus 32, 69, 143, 150, 158, 169, 170, 172, 174, 175, 198, 200, 207, 611, 612, 726
421	Amendment to Australian National Tide Tables 2021
422	Aus 811
423	Aus 245, 246
424	Aus 834, 836
425	Aus 240
426	Aus 6
427	Aus 256
428	Aus 4604, 4634, INT 604, 634
429	Aus 4603, 4604, INT 603, 604
430	PNG 505, 621
431	Aus 722
432	Aus 17
433	Aus 901
434	Aus 4603, 4708, 4722, 4723, INT 603, 708, 722, 723
435	Aus 347
436	Aus 780
437	Aus 169
438(T)	Aus 4601, INT 601
439(T)	Aus 4074, 4601, INT 74, 601
440(T)	Aus 834
441(T)	Aus 241, 817
442(T)	Aus 813, 814
443(T)	Aus 256, 827
444(T)	PNG 508, 625
445(T)	Aus 4622, INT 622, PNG 387, 388, 646
446(T)	PNG 396, 547, 674
447(T)	Aus 4603, 4604, 4622, INT 603, 604, 622, PNG 391, 662
448(T)	Aus 15
449(T)	Aus 319, 320, 322
450(T)	Aus 57
451(T)	Aus 327, 4722, 4723, INT 722, 723
452(T)	Aus 81
453(T)	Aus 81
454(T)	Aus 326
455(T)	Aus 54
456(T)	Aus 130
457(T)	Aus 485, 780
458(T)	Aus 776, 777
459(T)	Aus 349, 787
460(T)	Aus 143, 158
461(T)	Aus 143, 158
462(T)	Aus 143, 144, 150, 158, 788
463(T)	Aus 171, 349, 789, 796
464(T)	Aus 357, 487, 798, 800, 4644, INT 644

NUMERICAL INDEX OF CHARTS AFFECTED

Edition No 10

Aus Chart	Notices
Aus 6	426
Aus 15	448(T)
Aus 17	432
Aus 32	420
Aus 54	455(T)
Aus 57	450(T)
Aus 69	420
Aus 81	452(T), 453(T)
Aus 130	456(T)
Aus 143	420, 460(T), 461(T), 462(T)
Aus 144	462(T)
Aus 150	420, 462(T)
Aus 158	420, 460(T), 461(T), 462(T)
Aus 169	420, 437
Aus 170	420
Aus 171	463(T)
Aus 172	420
Aus 174	420
Aus 175	420
Aus 198	420
Aus 200	420
Aus 207	420
Aus 240	425
Aus 241	441(T)
Aus 245	423
Aus 246	423
Aus 256	427, 443(T)
Aus 319	449(T)
Aus 320	449(T)
Aus 322	449(T)
Aus 326	454(T)
Aus 327	451(T)
Aus 347	435
Aus 349	459(T), 463(T)
Aus 357	464(T)
Aus 485	457(T)
Aus 487	464(T)
Aus 611	420
Aus 612	420
Aus 722	431
Aus 726	420
Aus 776	458(T)
Aus 777	458(T)
Aus 780	436, 457(T)
Aus 787	459(T)
Aus 788	462(T)
Aus 789	463(T)
Aus 796	463(T)
Aus 798	464(T)
Aus 800	464(T)
Aus 811	422
Aus 813	442(T)
Aus 814	442(T)
Aus 817	441(T)

Aus Chart	Notices
Aus 827	443(T)
Aus 834	424, 440(T)
Aus 836	424
Aus 901	433
Aus 4074	439(T)
Aus 4601	438(T), 439(T)
Aus 4603	429, 434, 447(T)
Aus 4604	428, 429, 447(T)
Aus 4622	445(T), 447(T)
Aus 4634	428
Aus 4644	464(T)
Aus 4708	434
Aus 4722	434, 451(T)
Aus 4723	434, 451(T)
PNG 387	445(T)
PNG 388	445(T)
PNG 391	447(T)
PNG 396	446(T)
PNG 505	430
PNG 508	444(T)
PNG 547	446(T)
PNG 621	430
PNG 625	444(T)
PNG 646	445(T)
PNG 662	447(T)
PNG 674	446(T)

INT Chart	Notices
INT 74	439(T)
INT 601	438(T), 439(T)
INT 603	429, 434, 447(T)
INT 604	428, 429, 447(T)
INT 622	445(T), 447(T)
INT 634	428
INT 644	464(T)
INT 708	434
INT 722	434, 451(T)
INT 723	434, 451(T)

419 AUSTRALIA - Products - New Charts, New Editions, Withdrawn Charts

Australian Hydrographic Office

New Charts

<i>Chart</i>	<i>Title and Geographical limits</i>	<i>Scale</i>	<i>Publication Date</i>	<i>Remarks</i>
NIL				

New Electronic Navigation Chart (Aus ENC)

<i>Cell Name</i>	<i>Title</i>	<i>Publication Date</i>	<i>Remarks</i>
AU5ONS01	Western Australia - North West Shelf - Onslow	6 May 2021	AU5069P1 has been withdrawn.
AU5GEX01	Australia - Victoria - Port Phillip - Geelong	13 May 2021	AU5153P0 has been withdrawn.
AU5BTB01	Australia - New South Wales - Botany Bay and Port Hacking	6 May 2021	AU5198P0 has been withdrawn.
AU5SYD01	Australia - New South Wales - Port Jackson (East)	13 May 2021	AU5200PE has been withdrawn.
AU5CSP01	Australia - Victoria - Port Phillip - Clifton Springs	13 May 2021	AU5157P3 has been withdrawn.
AU5PWI01	Australia - Victoria - Port Phillip - Point Wilson Pier	13 May 2021	AU5157P1 has been withdrawn.
PG305150	Papua New Guinea - Bismarck Sea - Cell 02	13 May 2021	AU305150 has been withdrawn.
PG407148	Papua New Guinea - New Britain - Cell 12 (Aware Islands)	13 May 2021	AU407148 has been withdrawn.
PG307153	Solomon Sea - Cell 15	6 May 2021	AU307153 has been withdrawn.
PG305154	South Pacific Ocean - Green Islands	13 May 2021	AU305154 has been withdrawn.
PG305155	South Pacific Ocean - Tulun Islands	13 May 2021	AU305155 has been withdrawn.
PG407151	Papua New Guinea - New Britain - Cell 13	13 May 2021	AU407151 has been withdrawn.
PG403141	Papua New guinea - North Coast - Baudissan Point to Bougainville Bay	13 May 2021	AU403141 has been withdrawn.
PG306153	Solomon Sea - Cell 16	13 May 2021	AU306153 has been withdrawn.
PG307152	Solomon Sea - Cell 14	13 May 2021	AU307152 has been withdrawn.
PG308148	Solomon Sea - Cell 11	13 May 2021	AU308148 has been withdrawn.
PG405145	Papua New Guinea - North Coast - Karkar Island to Manam Island	13 May 2021	AU405145 has been withdrawn.

New Editions and Withdrawn Charts

<i>Chart</i>	<i>Title</i>	<i>Scale</i>	<i>Publication Date</i>	<i>Remarks</i>
NIL				

419 AUSTRALIA - Products - New Charts, New Editions, Withdrawn Charts**Chart permanently withdrawn**

Charts listed above as withdrawn no longer meet chart carriage requirements and should be marked as "superseded" and replaced with the new chart/ new edition listed prior to passage through the area covered by the new chart.

When placing orders with a chart agent between notice of forthcoming edition and its publication, mariners should advise whether their order pertains to the current edition or the new edition.

For further details refer to the AHO website at www.hydro.gov.au for new edition and new chart stock arrival information.

420 AUSTRALIA - Products - New Charts and New Editions to be published shortly

Australian Hydrographic Office

New Charts to be published shortly

<i>Chart</i>	<i>Title</i>	<i>Scale</i>	<i>Remarks</i>
NIL			

New Editions to be published shortly

<i>Chart</i>	<i>Title</i>	<i>Scale</i>	<i>Remarks</i>
Aus 143	Australia - South Coast - Victoria - Port Phillip	1:100 000	New edition to remove plans.
Aus 198	Australia - East Coast - New South Wales - Botany Bay and Port Hacking	1:25 000	New edition with general updating throughout.
Aus 200	Australia - East Coast - New South Wales - Port Jackson Inset: Parramatta River	1:25 000 1:25 000	New edition with general updating throughout.
Aus 207	Australia - East Coast - New South Wales - Approaches to Newcastle Inset: Hexham Reach	1:25 000 1:25 000	New edition with general updating throughout.
Aus 611	Australia - East Coast - Coral Sea - Plans in the Coral Sea (Sheet 2) Plans: Kenn Reefs Wreck Reefs Mellish Reef Cato Reef	 1:75 000 1:75 000 1:50 000 1:37 500	New edition with general updating throughout; including latest bathymetric data.
Aus 612	Australia - East Coast - Coral Sea - Plans in the Coral Sea (Sheet 1) Plans: Frederick Reefs Saumarez Reefs	 1:75 000 1:100 000	New edition with general updating throughout; including latest bathymetric data.

Charts to be withdrawn without replacement 28 May 2021

<i>Chart</i>	<i>Title</i>	<i>Scale</i>	<i>Publication Date</i>
Aus 32 Edition 4	Australia - North Coast - Western Australia - Cambridge Gulf Plans: Wyndham Wharf Approaches to Wyndham Wharf	1:75 000 1:7 500 1:37 500	19 April 2019
Aus 69 Edition 1	Australia - North West Coast - Western Australia - Plans of Port of Ashburton and Onslow Plans: Port of Ashburton Onslow	 1:10 000 1:12 500	18 December 2015
Aus 150 Edition 2	Australia - South Coast - Victoria - Western Port Plans: Eastern Entrance to Western Port The Narrows Rhyll	1:75 000 1:37 500 1:10 000 1:10 000	4 June 2010
Aus 158 Edition 2	Australia - South Coast - Victoria - Port Phillip - South and West Channels	1:37 500	19 December 2014
Aus 169 Edition 1	Australia - Tasmania - Plans in Tasmania (Sheet 3) Plans: Coles Bay Blackman Bay Georges Bay Schouten Passage	 1:15 000 1:25 000 1:25 000 1:75 000	21 January 2005

420 AUSTRALIA - Products - New Charts and New Editions to be published shortly**Charts to be withdrawn without replacement 28 May 2021 (continued)**

<i>Chart</i>	<i>Title</i>	<i>Scale</i>	<i>Publication Date</i>
Aus 170 Edition 1	Australia - Tasmania - Mercury Passage	1:37 500	13 October 2006
Aus 172 Edition 1	Australia - Tasmania - Port of Hobart Plans: Sullivans Cove Bowen Bridge	1:10 000 1:5 000 1:10 000	2 September 2005
Aus 174 Edition 1	Australia - Tasmania - Plans in Tasmania (Sheet 4) Plans: Port Huon North West Bay Port Arthur Recherche Bay Southport	 1:12 500 1:25 000 1:25 000 1:25 000 1:25 000	6 June 2008
Aus 175 Edition 1	Australia - Tasmania - Spring Bay including Triabunna	1:10 000	28 March 2008
Aus 726 Edition 4	Australia - North Coast - Western Australia - Approaches to Cambridge Gulf	1:150 000	18 April 2003

421 AUSTRALIA - Product - Amendment to Australian National Tide Tables 2021

Australian Hydrographic Office

ANTT 2021

Page 339 <i>Amend</i>	PORT KEATS To Chart Datum -0.1 to 0.0
Page 340 <i>Amend</i>	NATIVE POINT To Chart Datum -0.1 to 0.0
Page 352 <i>Amend</i>	BARROW ISLAND - TANKER MOORING Correction to Chart Datum ENC AU5066P0 to AU5BWB01
Page 355 <i>Delete</i>	FREMANTLE To Chart Datum AUS 113 NE 27 JAN 2017 0.0 GEELONG To Chart Datum AUS 153 NE 17 JUL 2015 0.0
<i>Insert</i>	FREMANTLE To Chart Datum AUS 112 NE 28 JUN 2019 0.0
Page 356 <i>Amend</i>	LEGGATT ISLAND To Chart Datum AUS 833 NE 30 APR 2021 0.0
<i>Delete</i>	LEGGATT ISLAND To Chart Datum AUS 270 NE 22 FEB 2019 0.0
Page 357 <i>Delete</i>	MELBOURNE To Chart Datum AUS 154 NE 19 MAY 2017 0.0 PORT DOUGLAS To Chart Datum AUS 270 NE 22 FEB 2019 0.0

422 AUSTRALIA - NEW SOUTH WALES - Trial Bay - Disused pipeline

Australian Hydrographic Office

Aus 811 [529/2020]

<i>Insert</i>	disused pipeline, between	30° 53'.25 S	153° 03'.27 E
		30° 52'.80 S	153° 03'.18 E

423 AUSTRALIA - QUEENSLAND - Gladstone - Gatcombe Channel - Light buoy

Australian Hydrographic Office

Aus 245 [95/2021]

Insert	special pillar light buoy, <i>Fl. Y.4s G4</i> , without topmark	23° 51'.503 S	151° 19'.908 E
Delete	light buoy	23° 51'.48 S	151° 19'.89 E

Aus 246 [NE 8/1/2021]

Insert	special pillar light buoy, <i>Fl. Y.4s G4</i> , without topmark	23° 51'.503 S	151° 19'.908 E
Delete	light buoy	23° 51'.48 S	151° 19'.89 E

424 AUSTRALIA - QUEENSLAND - Great Barrier Reef - Quoin Island Entrance - Depth*Former Notice - 920(P)/2020 is cancelled*

James Cook University

Aus 834 [NE 30/4/2021]

Insert	depth, <i>40m</i> , enclosed by contour	12° 23'.50 S	143° 51'.49 E
Delete	depth, <i>40m</i> , and enclosing danger circle with legend, R	12° 23'.5 S	143° 51'.5 E

Aus 836 [367/2020]

Insert	depth, <i>40m</i> , enclosed by contour	12° 23'.50 S	143° 51'.49 E
--------	---	--------------	---------------

425 AUSTRALIA - QUEENSLAND - Great Sandy Strait - Tooth Island - Nav aids*Former Notice - 377(T)/2021 is cancelled*

Maritime Safety Queensland Notice 166/2021

Aus 240 [184/2021]

Replace	light beacon with starboard lateral conical light buoy, <i>Fl. G.2·5s</i> , without topmark	25° 33'.1 S	152° 55'.4 E
---------	---	-------------	--------------

426 AUSTRALIA - QUEENSLAND - Karumba - Light beacons; navline*Former Notice - 1326(T)/2019 is cancelled*

Maritime Safety Queensland Notice 158/2021

Aus 6 [850/2020]

Amend	light beacon to <i>Dir WRG</i>	17° 26'.75 S	140° 44'.81 E
Delete	light beacon	17° 26'.71 S	140° 45'.25 E
	dashed and continuous line with legend <i>264·5°</i> , emanating from light beacon	17° 26'.75 S	140° 44'.81 E

427 AUSTRALIA - QUEENSLAND - Townsville - Lights; bearing

Maritime Safety Queensland Notice 149/2021

Aus 256 [144/2021]

Amend	legend to <i>Dir 206°</i>	19° 14'.27 S	146° 49'.78 E
	light to <i>WRG</i>	19° 15'.06 S	146° 49'.34 E
Delete	light	19° 15'.11 S	146° 49'.31 E

428 AUSTRALIA - CORAL SEA - Bampton Reefs - Light buoy northwards

Australian Bureau of Meteorology

Aus 4604 (INT 604) [983/2020]

Amend	light buoy to <i>Fl. Y.2s</i>	15° 51'.0 S	158° 27'.6 E
-------	-------------------------------	-------------	--------------

Aus 4634 (INT 634) [956/2020]

Amend	light buoy to <i>Fl. Y.2s</i>	15° 51'.0 S	158° 27'.6 E
-------	-------------------------------	-------------	--------------

429 PAPUA NEW GUINEA - Pak Island - Depth

UKHO

Aus 4603 (INT 603) [654/2020]Insert drying height, 0_4m , enclosed by contour 2° 01'.3 S 147° 34'.6 E**Aus 4604 (INT 604) [428/2021]**Insert drying height, 0_4m , enclosed by contour 2° 01'.3 S 147° 34'.6 E**430 PAPUA NEW GUINEA - Sinavi Reef - Depths**

European Space Agency

PNG 505 [506/2020]

Insert accompanying block 9° 32'.1 S 147° 02'.9 E

PNG 621 [NC 12/6/2020]

Insert accompanying block 9° 32'.6 S 147° 04'.6 E

431 AUSTRALIA - NORTHERN TERRITORY - Fenton Patches - Light buoy

Australian Institute of Marine Science

Aus 722 [NE 19/2/2021]

Delete light buoy 12° 10'.0 S 130° 47'.0 E

432 AUSTRALIA - NORTHERN TERRITORY - Maningrida - Light; navline

Department of Infrastructure, Planning and Logistics NT

Aus 17 [913/2018]Insert light, 2 *F.Bu* 12° 03'.06 S 134° 13'.23 E
a dashed line in a direction 323·5° for a distance of 1852m, with legend 12° 03'.06 S 134° 13'.23 E
143·5°, emanating from light**433 TIMOR-LESTE - Dili - Wrecks**

Australian Hydrographic Office

Aus 901 [363/2021]

Insert stranded wreck 8° 33'.127 S 125° 34'.802 E

Delete wreck 8° 32'.28 S 125° 35'.01 E
wreck 8° 32'.48 S 125° 33'.38 E
depth, 0_3m 8° 33'.12 S 125° 34'.80 E**434 AUSTRALIA - WESTERN AUSTRALIA - Argo Abyssal Plain - Light buoys northwestwards**

Australian Bureau of Meteorology

Aus 4603 (INT 603) [429/2021]Replace light buoy with special cylindrical light buoy, *Fl. Y.2s*, without topmark 15° 01'.2 S 118° 04'.4 E**Aus 4708 (INT 708) [148/2021]**Replace light buoy with special cylindrical light buoy, *Fl. Y.2s*, without topmark 14° 02'.8 S 110° 01'.7 E**Aus 4722 (INT 722) [480/2020]**Replace light buoy with special cylindrical light buoy, *Fl. Y.2s*, without topmark 15° 01'.2 S 118° 04'.4 E**Aus 4723 (INT 723) [951/2020]**Replace light buoy with special cylindrical light buoy, *Fl. Y.2s*, without topmark 14° 02'.8 S 110° 01'.7 E**435 AUSTRALIA - SOUTH AUSTRALIA - Cape Jaffa - Margaret Brock Reef - Light**

Department for Infrastructure and Transport SA Notice 11/2021

Aus 347 [240/2021]Amend light to *Fl.5s 8M* 36° 57'.1 S 139° 35'.7 E

436 AUSTRALIA - SOUTH AUSTRALIA - Kangaroo Island - Kingscote - Light beacon

Department for Infrastructure and Transport SA Notice 12/2021

Aus 780 [276/2021]Move light beacon
to35° 38'.0 S 137° 38'.4 E
35° 37'.96 S 137° 38'.19 E**437 AUSTRALIA - TASMANIA - Georges Bay - Lords Point - Buoy***Former Notice - 418(T)/2021 is cancelled*

Marine and Safety Tasmania Notice M132(T)/2021

Aus 169 (Georges Bay) [194/2021]Replace beacon with starboard lateral spar buoy, *No7B*, without topmark

41° 18'.15 S 148° 18'.65 E

438(T)/2021 AUSTRALIA - TASMAN SEA - Tasman Basin - Light buoy off station
Australian Bureau of Meteorology

The special light buoy, *Fl.Y.2s* (44° 47'.0 S 161° 42'.0 E), is off station.

Chart temporarily affected - Aus 4601 (INT 601)

439(T)/2021 AUSTRALIA - TASMAN SEA - Tasman Basin - Light buoy off station
Former Notice - 108(T)/2021 is cancelled
Australian Bureau of Meteorology

Cancel this notice on receipt.

Chart formerly affected - Aus 4074 (INT 74) - Aus 4601 (INT 601)

440(T)/2021 AUSTRALIA - QUEENSLAND - Great Barrier Reef - Hudson Patches - Light beacon unlit
Australian Maritime Safety Authority Auscoast Warning 85/2021

The light beacon, *Fl.WR.7.5s 12m 10/8M* (12° 59'.70 S 143° 43'.46 E), is unlit.

Chart temporarily affected - Aus 834

441(T)/2021 AUSTRALIA - QUEENSLAND - Great Sandy Strait - Dayman Point - Scientific instruments
Maritime Safety Queensland Notice 160(T)/2021

Subsurface scientific instruments exist in positions 25° 16'.37 S 152° 54'.32 E and 25° 14'.48 S 152° 53'.31 E.

Chart temporarily affected - Aus 241 - Aus 817

442(T)/2021 AUSTRALIA - QUEENSLAND - Kirra Point - Scientific instrument
Maritime Safety Queensland Notice 174(T)/2021

A special light buoy, *Fl(5)Y.20s*, exists in position 28° 08'.58 S 153° 30'.65 E.

Chart temporarily affected - Aus 813 - Aus 814

443(T)/2021 AUSTRALIA - QUEENSLAND - Rattlesnake Island - Live firing
Maritime Safety Queensland Notice 164(T)/2021

Live firing activities will be conducted within a 5M radius of position 19° 02'.27 S 146° 36'.43 E on 27 May 2021.

Mariners are advised to navigate with caution and keep well clear of the area.

Chart temporarily affected - Aus 256 - Aus 827

444(T)/2021 PAPUA NEW GUINEA - Kwanasausau (China) Strait - Weku Una - Light beacon unlit
National Maritime Safety Authority PNG Coastal Navigation Warning 4/2021

The light beacon, *Fl(2)8s 10m 10M* (10° 36'.18 S 150° 36'.64 E), is unlit.

Chart temporarily affected - PNG 508 - PNG 625

445(T)/2021 PAPUA NEW GUINEA - Madang Harbour to Cape Croisilles - Lights unlit
National Maritime Safety Authority PNG Coastal Navigation Warning 6/2021, 8/2021

The light, *Oc.4s 15m 7M* (5° 12'.18 S 145° 48'.33 E), is unlit.

The light, *Fl(2)6s 22m 10M* (4° 50'.89 S 145° 48'.33 E), is unlit.

Chart temporarily affected - Aus 4622 (INT 622) - PNG 387 - PNG 388 - PNG 646

446(T)/2021 PAPUA NEW GUINEA - New Britain - Buluma - Light beacon unlit
National Maritime Safety Authority PNG Coastal Navigation Warning 5/2021

The light beacon, *Fl.G.3s 7m 4M* (5° 31'.40 S 150° 17'.35 E), is unlit.

Chart temporarily affected - PNG 396 - PNG 547 - PNG 674

447(T)/2021 PAPUA NEW GUINEA - Seeadler Harbour - Ndrilo Island - Light unlit
National Maritime Safety Authority PNG Coastal Navigation Warning 7/2021

The light, *Fl(4)16s 27m 10M* (1° 57'.63 S 147° 19'.06 E), is unlit.

Chart temporarily affected - Aus 4603 (INT 603) - Aus 4604 (INT 604) - Aus 4622 (INT 622) - PNG 391 - PNG 662

448(T)/2021 AUSTRALIA - NORTHERN TERRITORY - Gove Harbour - Light buoy restored
Former Notice - 388(T)/2021 is cancelled
Rio Tinto

Cancel this notice on receipt.

Chart formerly affected - Aus 15

449(T)/2021 AUSTRALIA - WESTERN AUSTRALIA - Browse Island - Subsea operations
McDermott Australia

Vessels Normand Frontier, DLV 2000, LV108 and support vessels are conducting subsea operations in an area bounded by the following positions:

14° 00'.0 S 123° 05'.0 E

14° 00'.0 S 123° 20'.0 E

13° 44'.0 S 123° 20'.0 E

13° 44'.0 S 123° 05'.0 E.

Mariners are advised to navigate with caution in the area. 2.5M clearance requested.

Chart temporarily affected - Aus 319 - Aus 320 - Aus 322

450(T)/2021 AUSTRALIA - WESTERN AUSTRALIA - Dampier - Intercourse Island - Wreck salvaged
Former Notice - 989(T)/2018 is cancelled
Pilbara Ports Authority

Cancel this notice on receipt.

Chart formerly affected - Aus 57

451(T)/2021 AUSTRALIA - WESTERN AUSTRALIA - Dampier Archipelago - Subsea operations northwards
Woodside Energy Ltd

MV *Skandi Singapore* and support vessel *Outer Limit* will be conducting subsea operations between positions 19° 26'.97 S 116° 29'.29 E and 19° 34'.70 S 116° 26'.95 E.

Mariners are advised to navigate with caution in the area. 0.27M clearance requested.

Chart temporarily affected - Aus 327 - Aus 4722 (INT 722) - Aus 4723 (INT 723)

452(T)/2021 AUSTRALIA - WESTERN AUSTRALIA - Geraldton - Light buoy recovered
Former Notice - 722(T)/2020 is cancelled
Mid West Ports

Cancel this notice on receipt.

Chart formerly affected - Aus 81

453(T)/2021 AUSTRALIA - WESTERN AUSTRALIA - Geraldton - Champion Bay - Scientific instruments recovered
Former Notice - 77(T)/2021 is cancelled
Mid West Ports

Cancel this notice on receipt.

Chart formerly affected - Aus 81

454(T)/2021 AUSTRALIA - WESTERN AUSTRALIA - Port Hedland - Cooke Point - Scientific instruments recovered
Former Notice - 932(T)/2020 is cancelled
Pilbara Ports Authority

Cancel this notice on receipt.

Chart formerly affected - Aus 326

455(T)/2021 AUSTRALIA - WESTERN AUSTRALIA - Port Hedland - Harbour works
Pilbara Ports Authority Notice PH 6(T)/2021

Works associated with the construction of the Lumsden Point Temporary Module Offloading Facility are in progress in the vicinity of position 20° 20'.05 S 118° 34'.96 E.

Barges and support vessels are on site and will monitor VHF Ch 12.

The barges are secured to cyclone moorings with 100m mooring lines. The moorings exist in the vicinity of the following positions:

20° 19'.83 S 118° 35'.57 E
20° 20'.34 S 118° 35'.28 E
20° 20'.14 S 118° 34'.60 E.

Mariners are advised to navigate with caution in the area.

Chart temporarily affected - Aus 54

456(T)/2021 AUSTRALIA - SOUTH AUSTRALIA - Adelaide - Bridge works completed
Former Notice - 286(T)/2021 is cancelled
Department of Planning, Transport and Infrastructure SA

Cancel this notice on receipt.

Chart formerly affected - Aus 130

457(T)/2021 AUSTRALIA - SOUTH AUSTRALIA - Kangaroo Island - Eastern Cove - Light beacon relit
Former Notice - 344(T)/2021 is cancelled
Department for Infrastructure and Transport SA

Cancel this notice on receipt.

Chart formerly affected - Aus 485 - Aus 780

458(T)/2021 AUSTRALIA - SOUTH AUSTRALIA - Tumby Island - Light beacon relit
Former Notice - 347(T)/2021 is cancelled
Department for Infrastructure and Transport SA

Cancel this notice on receipt.

Chart formerly affected - Aus 776 - Aus 777

459(T)/2021 AUSTRALIA - VICTORIA - Port Campbell - Subsea operations southwestwards completed

Former Notice - 297(T)/2021 is cancelled
Cooper Energy

Cancel this notice on receipt.

Chart formerly affected - Aus 349 - Aus 787

460(T)/2021 AUSTRALIA - VICTORIA - Port Phillip - Blairgowrie - Dredging operations

Parks Victoria Notice 109(T)/2021

Dredging operations are in progress in the vicinity of position 38° 21'.42 S 144° 46'.35 E.

The dredge material will be deposited for beach renourishment to the east and west of the marina.

All hazards to navigation will display appropriate lights and shapes.

Mariners are advised to navigate with caution in the area.

Chart temporarily affected - Aus 143 - Aus 158

461(T)/2021 AUSTRALIA - VICTORIA - Port Phillip - Martha Point - Light beacon relit

Former Notice - 351(T)/2021 is cancelled
Parks Victoria Notice 113/2021

Cancel this notice on receipt.

Chart formerly affected - Aus 143 - Aus 158

462(T)/2021 AUSTRALIA - VICTORIA - Port Phillip - South Channel - Shoaling; virtual AIS

Former Notices - 1013(T)/2020, 85(T)/2021 are cancelled
Victorian Ports Corporation (Melbourne) Notice 122(T)/2021

Shoaling exists in the South Channel and is marked by a special virtual AIS as follows:

<i>Position</i>	<i>Remarks</i>
38° 17'.72 S 144° 41'.54 E	TB3
38° 18'.08 S 144° 43'.47 E	TB4.

Vessels with draught greater than 13.5m are advised to navigate north of TB3 and either north or south of TB4.

Mariners are advised to navigate with caution in the area.

Chart temporarily affected - Aus 143 - Aus 144 - Aus 150 - Aus 158 - Aus 788

463(T)/2021 AUSTRALIA - TASMANIA - Bass Strait - King Island - Survey operations completed; scientific instruments recovered

Former Notice - 225(T)/2021 is cancelled
Marine and Safety Tasmania Notice M133(T)/2021

Cancel this notice on receipt.

Chart formerly affected - Aus 171 - Aus 349 - Aus 789 - Aus 796

464(T)/2021 AUSTRALIA - TASMANIA - Flinders Island - Survey operations eastwards
Marine and Safety Tasmania Notice M130/2021

Three AUVs are conducting survey operations in an area bounded by the following positions:

40° 39'.99 S 148° 39'.18 E

40° 39'.99 S 149° 29'.24 E

38° 50'.98 S 149° 45'.75 E

38° 50'.91 S 148° 17'.64 E.

Mariners are advised to navigate with caution in the area.

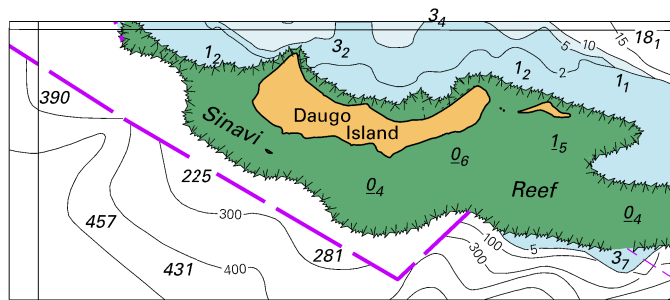
Chart temporarily affected - Aus 357 - Aus 487 - Aus 798 - Aus 800 - Aus 4644 (INT 644)

II

HYDROGRAPHIC REPORTS

NIL

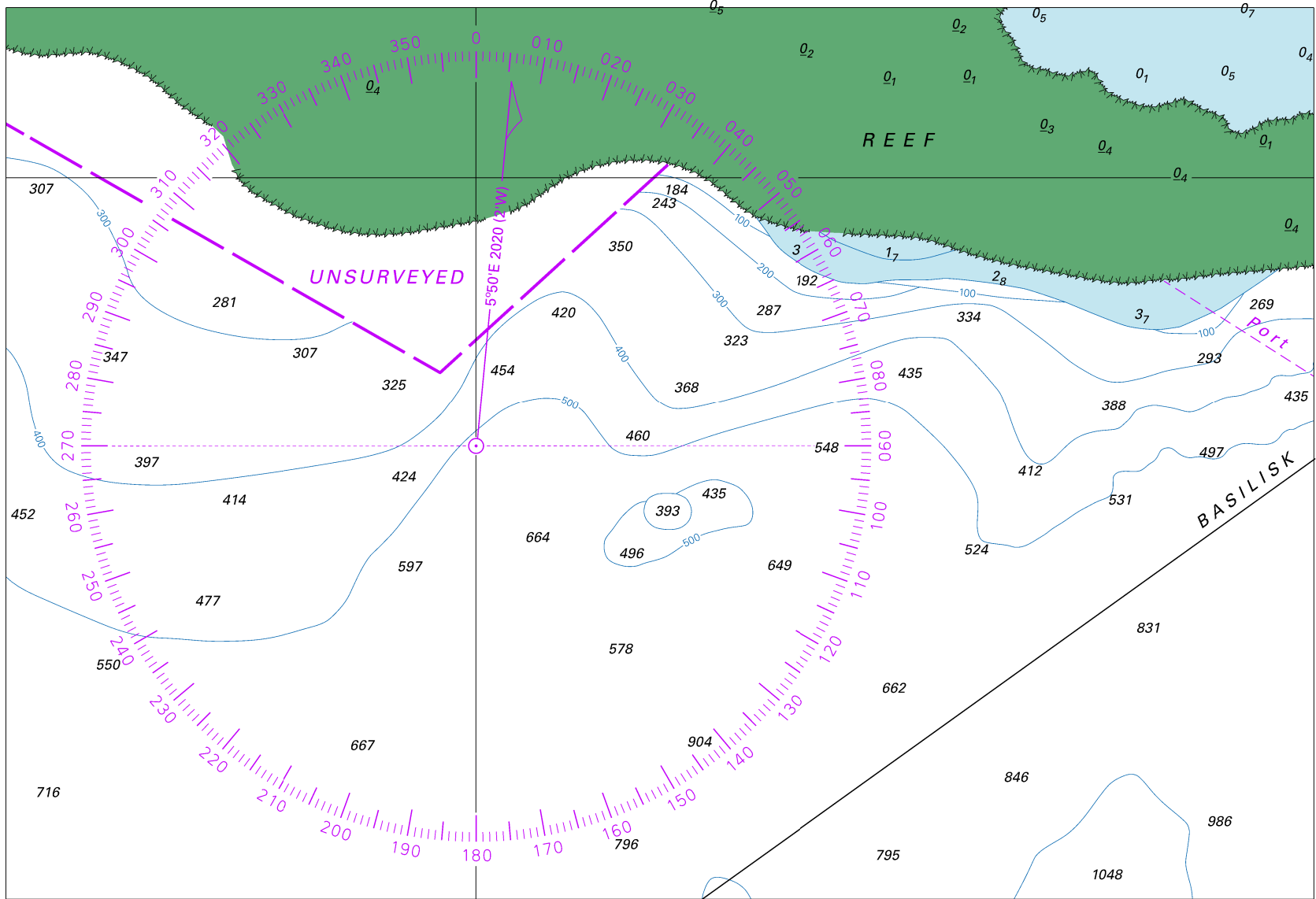
To accompany Australian Notice to Mariners 430/2021



© Commonwealth of Australia 2021

Block for chart PNG 505

(88.2 x 36.7mm)



Block for chart PNG 621

© Commonwealth of Australia 2021

(219.6 x 149.7mm)