

*To accompany Australian Notice to Mariners 360/2021*

**ELECTRONIC NAVIGATIONAL CHART (ENC)**

Larger scale ENC content exists in this area. When using electronic navigation systems, certain vessels (e.g. restricted by depth or size) may benefit from the additional level of detail shown in the largest scale ENC product available.

*Note for chart Aus 830*

*To accompany Australian Notice to Mariners 360/2021*

**ELECTRONIC NAVIGATIONAL CHART (ENC)**

Larger scale ENC content exists in this area. When using electronic navigation systems, certain vessels (e.g. restricted by depth or size) may benefit from the additional level of detail shown in the largest scale ENC product available.

*Note for chart Aus 832*

*To accompany Australian Notice to Mariners 364/2021*

**ELECTRONIC NAVIGATIONAL CHART (ENC)**

Larger scale ENC content exists in this area. When using electronic navigation systems, certain vessels (e.g. restricted by depth or size) may benefit from the additional level of detail shown in the largest scale ENC product available.

*Note for chart Aus 112*

*To accompany Australian Notice to Mariners 364/2021*

**DREDGED AREAS**

Depths in dredged areas, although generally maintained, may be less than charted. For the latest information, consult the Harbour Master.

*Note for chart Aus 117*

*To accompany Australian Notice to Mariners 367/2021*

**ELECTRONIC NAVIGATIONAL CHART (ENC)**

Larger scale ENC content exists in this area. When using electronic navigation systems, certain vessels (e.g. restricted by depth or size) may benefit from the additional level of detail shown in the largest scale ENC product available.

*Note for chart Aus 155*

*To accompany Australian Notice to Mariners 360/2021*

**ELECTRONIC NAVIGATIONAL CHART (ENC)**

Larger scale ENC content exists in this area. When using electronic navigation systems, certain vessels (e.g. restricted by depth or size) may benefit from the additional level of detail shown in the largest scale ENC product available.

*Note for chart Aus 831*

*To accompany Australian Notice to Mariners 364/2021*

**DREDGED AREAS**

Depths in dredged areas, although generally maintained, may be less than charted. For the latest information, consult the Harbour Master.

*Note for chart Aus 112*

*To accompany Australian Notice to Mariners 364/2021*

**INNER HARBOUR - TIDAL STREAMS**

Tidal Streams in the Inner Harbour are often masked by water from the Swan River. Refer to Australia Pilot Vol I NP 13.

*Note for chart Aus 112*

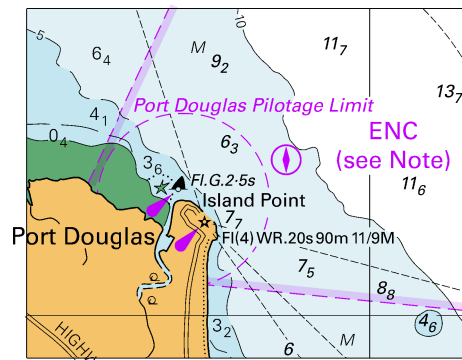
*To accompany Australian Notice to Mariners 366/2021*

**ELECTRONIC NAVIGATIONAL CHART (ENC)**

Larger scale ENC content exists in this area. When using electronic navigation systems, certain vessels (e.g. restricted by depth or size) may benefit from the additional level of detail shown in the largest scale ENC product available.

*Note for chart Aus 157*

To accompany Australian Notice to Mariners 360/2021

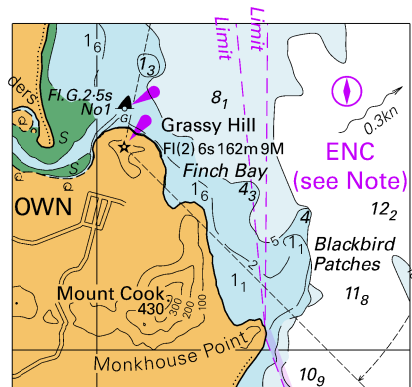


© Commonwealth of Australia 2021

Block for chart Aus 830

(58.0 x 46.1mm)

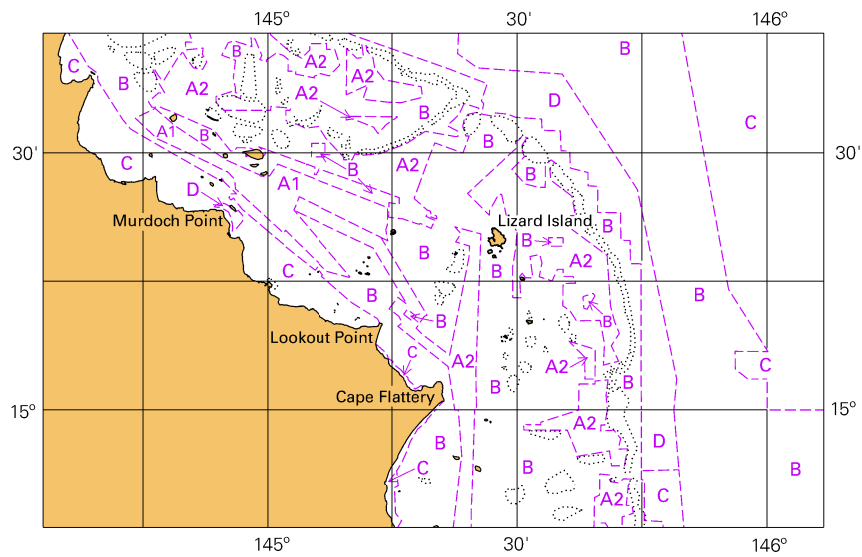
To accompany Australian Notice to Mariners 360/2021



© Commonwealth of Australia 2021

Block for chart Aus 831 (52.6 x 48.0mm)

To accompany Australian Notice to Mariners 360/2021

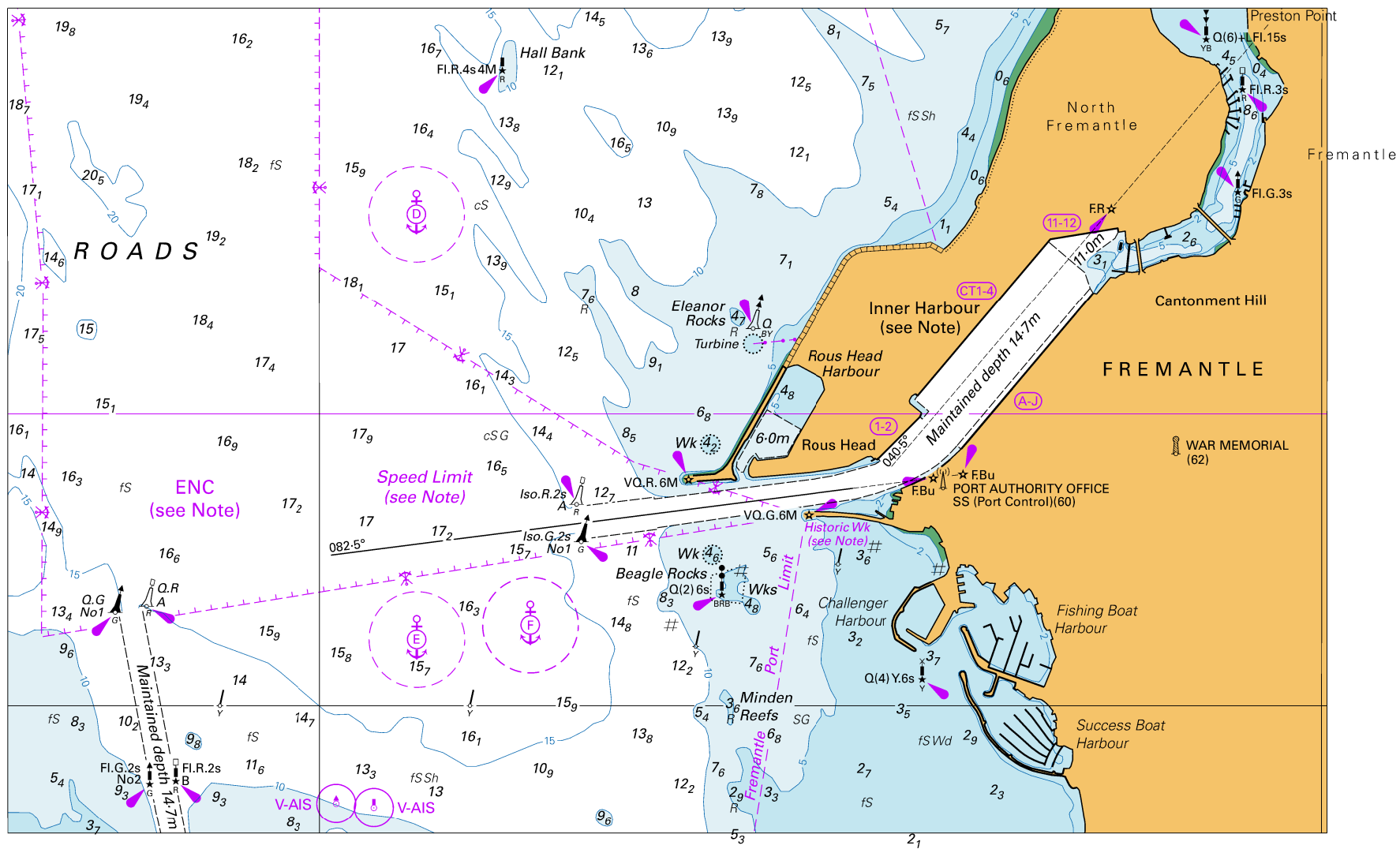


Block for chart Aus 832

(103.2 x 65.4mm)

© Commonwealth of Australia 2021

*To accompany Australian Notice to Mariners 364/2021*



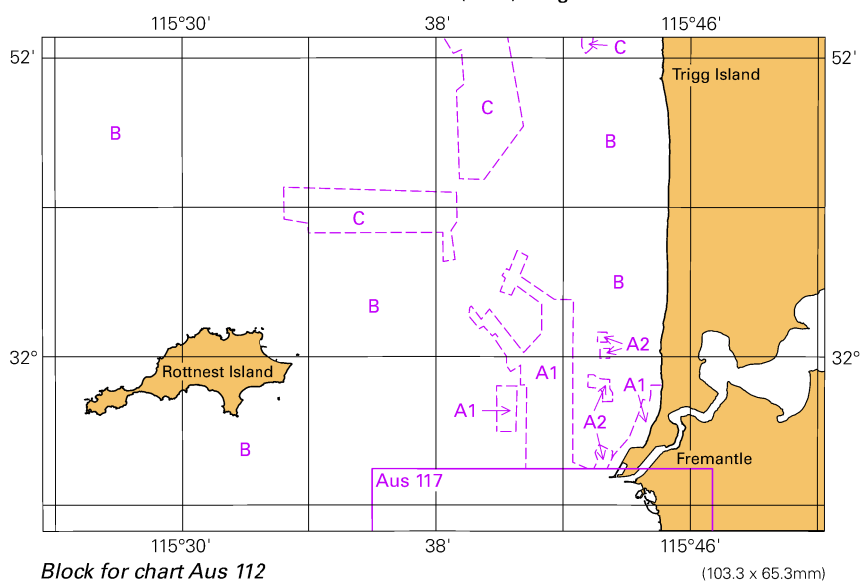
Block for chart Aus 112

© Commonwealth of Australia 2021

(221.0 x 138.3mm)

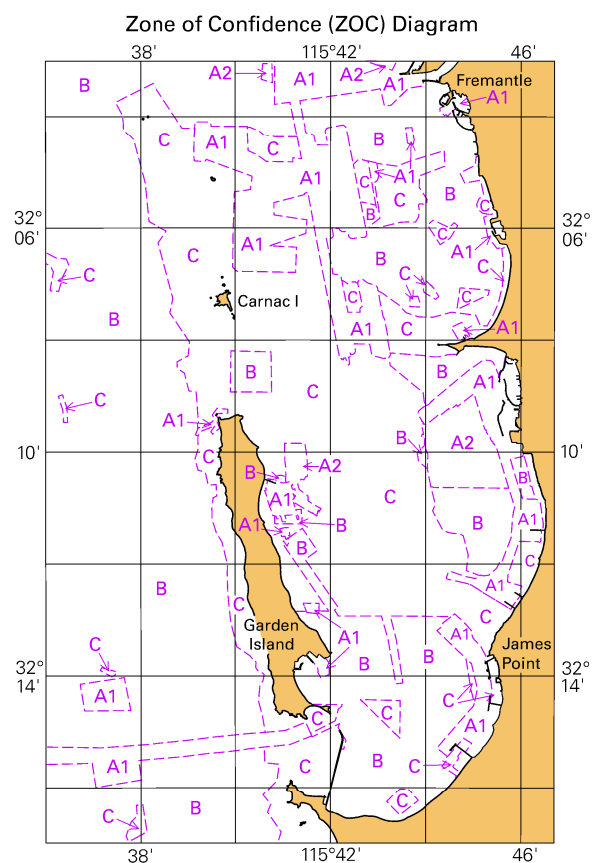
To accompany Australian Notice to Mariners 364/2021

Zone of Confidence (ZOC) Diagram



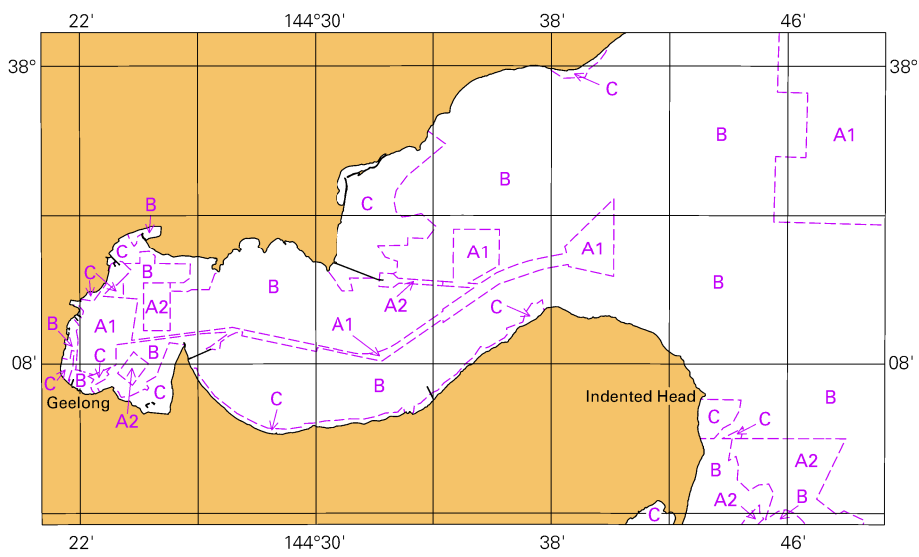
© Commonwealth of Australia 2021

To accompany Australian Notice to Mariners 364/2021



© Commonwealth of Australia 2021  
*Block for chart Aus 117* (67.2 x 103.5mm)

To accompany Australian Notice to Mariners 366/2021



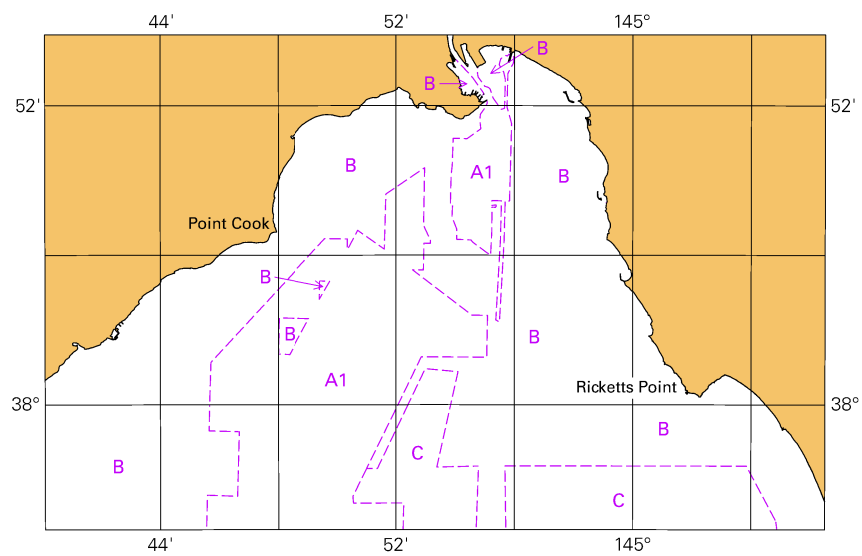
Block for chart 157

© Commonwealth of Australia 2021

(111.4 x 65.1mm)



*To accompany Australian Notice to Mariners 367/2021*



*Block for chart Aus 155*

(103.0 x 65.3mm)

© Commonwealth of Australia 2021