

*To accompany Australian Notice to Mariners 44/2021*

ELECTRONIC NAVIGATIONAL CHART (ENC)

Larger scale ENC content exists in this area. When using electronic navigation systems, certain vessels (e.g. restricted by depth or size) may benefit from the additional level of detail shown in the largest scale ENC product available.

*Note for chart Aus 314*

*To accompany Australian Notice to Mariners 44/2021*

ELECTRONIC NAVIGATIONAL CHART (ENC)

Larger scale ENC content exists in this area. When using electronic navigation systems, certain vessels (e.g. restricted by depth or size) may benefit from the additional level of detail shown in the largest scale ENC product available.

*Note for chart Aus 319*

*To accompany Australian Notice to Mariners 50/2021*

PREFERRED ROUTE

This is a preferred route and has not been surveyed in accordance with the IMO/IHO standards for recommended tracks, but is the preferred route for vessels having regard to charted depths. The attention of vessels meeting on the preferred route is drawn to the International Regulations for Preventing Collisions at Sea (1972), particularly Rules 18 and 28 regarding vessels constrained by their draught.

*Note for chart Aus 781*

*To accompany Australian Notice to Mariners 44/2021*

ELECTRONIC NAVIGATIONAL CHART (ENC)

Larger scale ENC content exists in this area. When using electronic navigation systems, certain vessels (e.g. restricted by depth or size) may benefit from the additional level of detail shown in the largest scale ENC product available.

*Note for chart Aus 317*

*To accompany Australian Notice to Mariners 46/2021*

ELECTRONIC NAVIGATIONAL CHART (ENC)

Larger scale ENC content exists in this area. When using electronic navigation systems, certain vessels (e.g. restricted by depth or size) may benefit from the additional level of detail shown in the largest scale ENC product available.

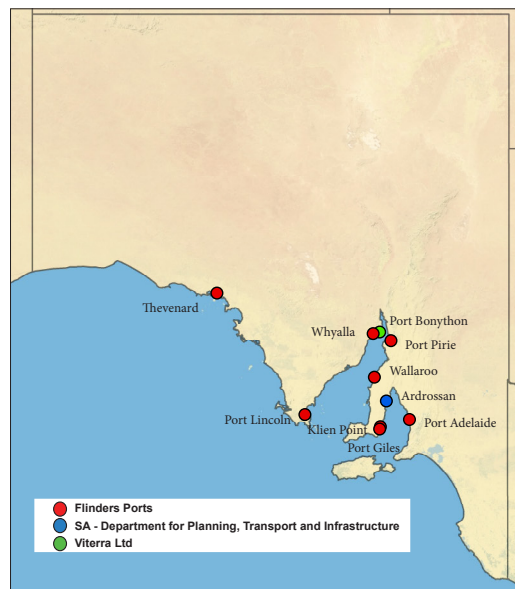
*Note for chart Aus 322*

## 11.10 SOUTH AUSTRALIA

- South Australia (SA) has one major trading port, nine regional ports and a number of non-trading community ports. The trading ports have been privatised and are managed by private companies. The main ports of Port Adelaide, Port Lincoln, Port Pirie, Port Giles, Thevenard, Klein Point and Wallaroo are managed by Flinders Ports which has established operating guidelines for users of port facilities including; coordination of shipping services, pilotage, towage, mooring labour, water taxi services, fresh water supplies, power, waste disposal, handling of dangerous cargoes as wells as port charges.

### 11.10.1 MARITIME INFORMATION

- Maritime information including SA NtM is published by the Department for Planning, Transport and Infrastructure on the SA Government website.



Website:	<a href="http://www.sa.gov.au/topics/transport-travel-and-motoring/boating-and-marine">www.sa.gov.au/topics/transport-travel-and-motoring/boating-and-marine</a>
----------	--

### 11.10.2 PORTS

Ardrossan, SA (34° 26'S, 137° 55'E)	
UN/LOCODE: AU ARD	
Paper charts:	Aus 139, 781
AusENC cells:	AU5ARD01, AU435137
Security Regulated Port:	Yes
Port Authority and Pilot:	Viteria Ltd
Website:	<a href="http://www.viteria.com.au">www.viteria.com.au</a>
Email:	<a href="mailto:viteria.aus@viteria.com">viteria.aus@viteria.com</a>
Telephone:	+61 8 8211 7199 / 1800 018 205
Pilotage:	Compulsory
Pilot Boarding Ground:	34° 27.40'S, 137° 56.80'E
Communication	"Adelaide VTS"
Call up, emergencies:	VHF Channel 16
Port Operations:	VHF Channel 16, 06, 12,
Notice of ETA:	14 days
For more information:	<a href="http://www.viteria.com.au/index.php/ports-and-terminals/">www.viteria.com.au/index.php/ports-and-terminals/</a>

Klein Point, SA (34° 58'S, 137° 46'E)	
UN/LOCODE: AU KLP	
Paper chart:	Aus 139, 781
AusENC cells:	AU5KLP01, AU435137
Security Regulated Port:	No
Port Authority:	Flinders Ports
Website:	<a href="http://www.flindersports.com.au">www.flindersports.com.au</a>
Email:	<a href="mailto:flindersports@flindersports.com.au">flindersports@flindersports.com.au</a>
Telephone:	+61 8 8447 0611
Pilotage:	Not Compulsory
Port Operations	
Telephone:	+61 8 8248 3505
Communication:	"Adelaide VTS"
Call up, emergencies:	VHF Channel 16
Port Operations:	VHF Channel 16, 12, 13, 67
Tugs:	VHF Channel 06, 08
For more information:	<a href="http://www.flindersports.com.au/ports-facilities/klein-point/">www.flindersports.com.au/ports-facilities/klein-point/</a>

## To accompany Australian Notice to Mariners 41/2021

<b>Port Adelaide, SA (34° 51'S, 138° 30'E)</b>	
UN/LOCODE: AU ADL	
Paper charts:	Aus 130, 137, 138, 781
AusENC cells:	AU5ADL01, AU435138
Security Regulated Port:	Yes
Port Authority:	Flinders Ports
Website:	<a href="http://www.flindersports.com.au">www.flindersports.com.au</a>
Email:	<a href="mailto:flindersports@flindersports.com.au">flindersports@flindersports.com.au</a>
Telephone:	+61 8 8447 0611
Pilotage:	Compulsory >35 m LOA
Port Operations	
Telephone:	+61 8 8248 3505
Pilot Boarding Ground:	34° 49'S, 138° 20'E
Communication:	"Adelaide VTS"
Call up, emergencies:	VHF Channel 16
Port Operations:	VHF Channel 16, 12, 13, 67
Tugs:	VHF Channel 06, 08
Notice of ETA:	24 hours
For more information:	<a href="http://www.flindersports.com.au/ports-facilities/port-adelaide/">www.flindersports.com.au/ports-facilities/port-adelaide/</a>

<b>Port Giles, SA (35° 01.5'S, 137° 46'E)</b>	
UN/LOCODE: AU PGI	
Paper chart:	Aus 139, 781
AusENC cells:	AU5PGI01, AU436137
Security Regulated Port:	Yes
Port Authority:	Flinders Ports
Website:	<a href="http://www.flindersports.com.au">www.flindersports.com.au</a>
Email:	<a href="mailto:flindersports@flindersports.com.au">flindersports@flindersports.com.au</a>
Telephone:	+61 8 8447 0611
Pilotage:	Compulsory >35 m LOA
Operations:	
Telephone:	+61 8 8248 3505
Pilot Boarding Ground:	35° 01.40'S, 137° 49.1'E
Communication:	"Adelaide VTS"
Call up, emergencies:	VHF Channel 16
Operations:	VHF Channel 16, 12, 13, 67
Tugs:	VHF Channel 06, 08
Notice of ETA:	24 hours
More information:	<a href="http://www.flindersports.com.au/ports-facilities/port-giles/">www.flindersports.com.au/ports-facilities/port-giles/</a>

<b>Port Bonython, SA (32° 59'S, 137° 45'E)</b>	
UN/LOCODE: AU PBY	
Paper chart:	Aus 136, 135
AusENC cells:	AU5PBY01, AU433137, AU434137
Security Regulated Port:	Yes
Port Authority:	Department of Planning, Transport and Infrastructure
Website:	<a href="http://www.dpti.sa.gov.au">www.dpti.sa.gov.au</a>
Email:	<a href="mailto:dpti.commercialmarineservices@sa.gov.au">dpti.commercialmarineservices@sa.gov.au</a>
Telephone:	+61 8 8343 2222
Pilotage:	Compulsory >35 m LOA
Port Operator:	Santos Pty Limited
Telephone:	+61 8 8649 0100
Fax:	+61 8 8649 0200
Pilots:	
Telephone:	+61 8 8632 1455
Fax:	+61 8 8632 5918
Pilot Boarding Grounds:	33° 10'S, 137° 39.2'E > 14m draught 33° 04.55'S, 137° 45.5'E < 14m draught 33° 03.8'S, 137° 38.8'E < 14m draught
Communication:	"Adelaide VTS"
Call up, emergencies:	VHF Channel 16
Operations:	VHF Channel 16, 12
Pilots:	VHF Channel 16, 06, 08, 12
Notice of ETA:	48 hours

<b>Port Lincoln, SA (34° 43'S, 135° 52'E)</b>	
UN/LOCODE: AU PLO	
Paper charts:	Aus 134, 133
AusENC cells:	AU5PLO01, AU435135
Security Regulated Port:	Yes
Port Authority:	Flinders Ports
Website:	<a href="http://www.flindersports.com.au">www.flindersports.com.au</a>
Email:	<a href="mailto:flindersports@flindersports.com.au">flindersports@flindersports.com.au</a>
Telephone:	+61 8 8447 0611
Pilotage:	Compulsory >35 m LOA
Operations:	
Telephone:	+61 8 8248 3505
Pilot Boarding Ground:	34° 39.60'S, 135° 57.85'E
Communication:	"Adelaide VTS"
Call up, emergencies:	VHF Channel 16
Operations:	VHF Channel 16, 12, 13, 67
Tugs:	VHF Channel 06, 08
Notice of ETA:	24 hours
More Information:	<a href="http://www.flindersports.com.au/ports-facilities/port-lincoln/">www.flindersports.com.au/ports-facilities/port-lincoln/</a>

To accompany Australian Notice to Mariners 41/2021

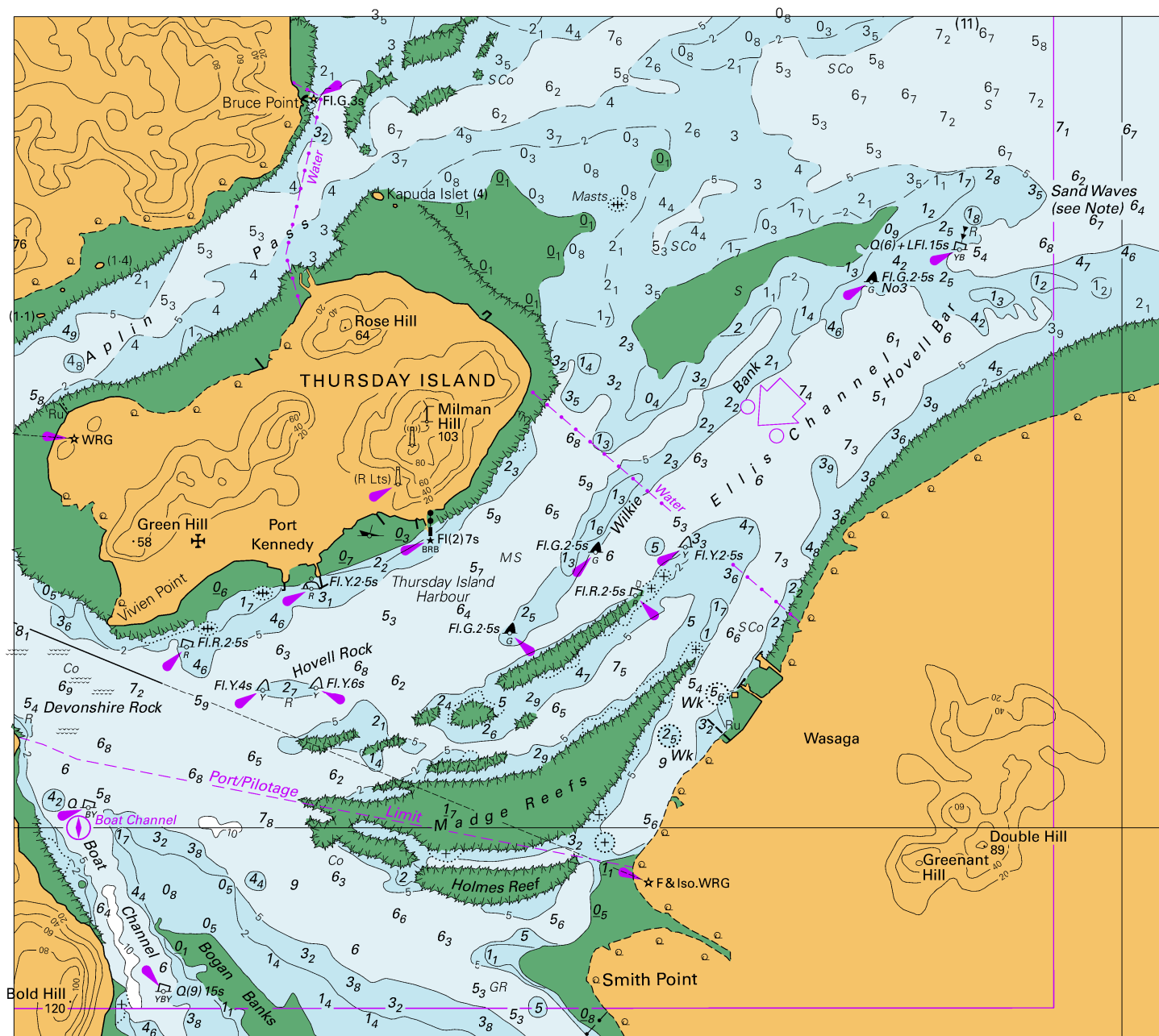
<b>Port Pirie, SA (33° 10'S, 138° 01'E)</b>	
UN/LOCODE: AU PPI	
Paper chart:	Aus 136
AusENC cells:	AU5PPI01, AU434138, AU434137
Security Regulated Port:	Yes
Port Authority:	Flinders Ports
Website:	www.flindersports.com.au
Email:	flindersports@flindersports.com.au
Telephone:	+61 8 8447 0611
Pilotage:	Compulsory >35 m LOA
Operations:	
Telephone:	+61 8 8248 3505
Pilot Boarding Ground:	33° 04.55'S, 137° 45.50'E
Communication:	"Adelaide VTS"
Call up, emergencies:	VHF Channel 16
Operations:	VHF Channel 16, 12, 13, 67
Tugs:	VHF Channel 06, 08
Notice of ETA:	24 hours
More information	www.flindersports.com.au/ports-facilities/port-pirie/

<b>Thevenard, SA (32° 09'S, 133° 39'E)</b>	
UN/LOCODE: AU THE	
Paper charts:	Aus 120
AusENC cells:	AU5THE01, AU433133
Security Regulated Port:	Yes
Port Authority:	Flinders Ports
Website:	www.flindersports.com.au
Email:	flindersports@flindersports.com.au
Telephone:	+61 8 8447 0611
Pilotage:	Compulsory >35 m LOA
Operations	
Telephone:	+61 8 8248 3505
Pilot Boarding Ground:	32° 12.6'S, 133° 33.7'E
Communication:	"Adelaide VTS"
Call up, emergencies:	VHF Channel 16
Operations:	VHF Channel 16, 12, 13, 67
Tugs:	VHF Channel 06, 08
Notice of ETA:	24 hours
More information:	www.flindersports.com.au/ports-facilities/thevenard/

<b>Wallaroo, SA (33° 56'S, 137° 37'E)</b>	
UN/LOCODE: AU WAL	
Paper chart:	Aus 133, 777
AusENC cells:	AU5WAL01, AU434137
Security Regulated Port:	Yes
Port Authority:	Flinders Ports
Website:	www.flindersports.com.au
Email:	flindersports@flindersports.com.au
Telephone:	+61 8 8447 0611
Pilotage:	Compulsory >35 m LOA
Operations:	
Telephone:	+61 8 8248 3505
Pilot Boarding Ground:	33° 54.5'S, 137° 31.6'E
Communication:	"Adelaide VTS"
Call up, emergencies:	VHF Channel 16
Operations:	VHF Channel 16, 12, 13, 67
Tugs:	VHF Channel 06, 08
Notice of ETA:	72 hours
More information:	www.flindersports.com.au/ports-facilities/wallaroo/

<b>Whyalla, SA (33° 01'S, 137° 35'E)</b>	
UN/LOCODE: AU WYA	
Paper charts:	Aus 135, 136, 778
AusENC cells:	AU5WYA01, AU434137
Security Regulated Port:	Yes
Port Authority:	Department of Planning, Transport and Infrastructure
Website:	www.dpti.sa.gov.au
Email:	dpti.commercialmarineservices@sa.gov.au
Telephone:	+61 8 8343 2222
Operator:	OneSteel Manufacturing Pty Ltd (trading as SIMEC Mining)
Website:	www.simec.com/mining/
Telephone:	+61 8 8640 4444
Pilotage:	Compulsory >35 m LOA
Pilot	
Telephone:	+61 8 8447 0903
Pilot Boarding Ground:	33° 03.8'S, 137° 38.8'E
Communication:	"Adelaide VTS"
Call up, emergencies:	VHF Channel 16
Pilots:	VHF Channel 08
Notice of ETA:	48 hours

*To accompany Australian Notice to Mariners 43/2021*

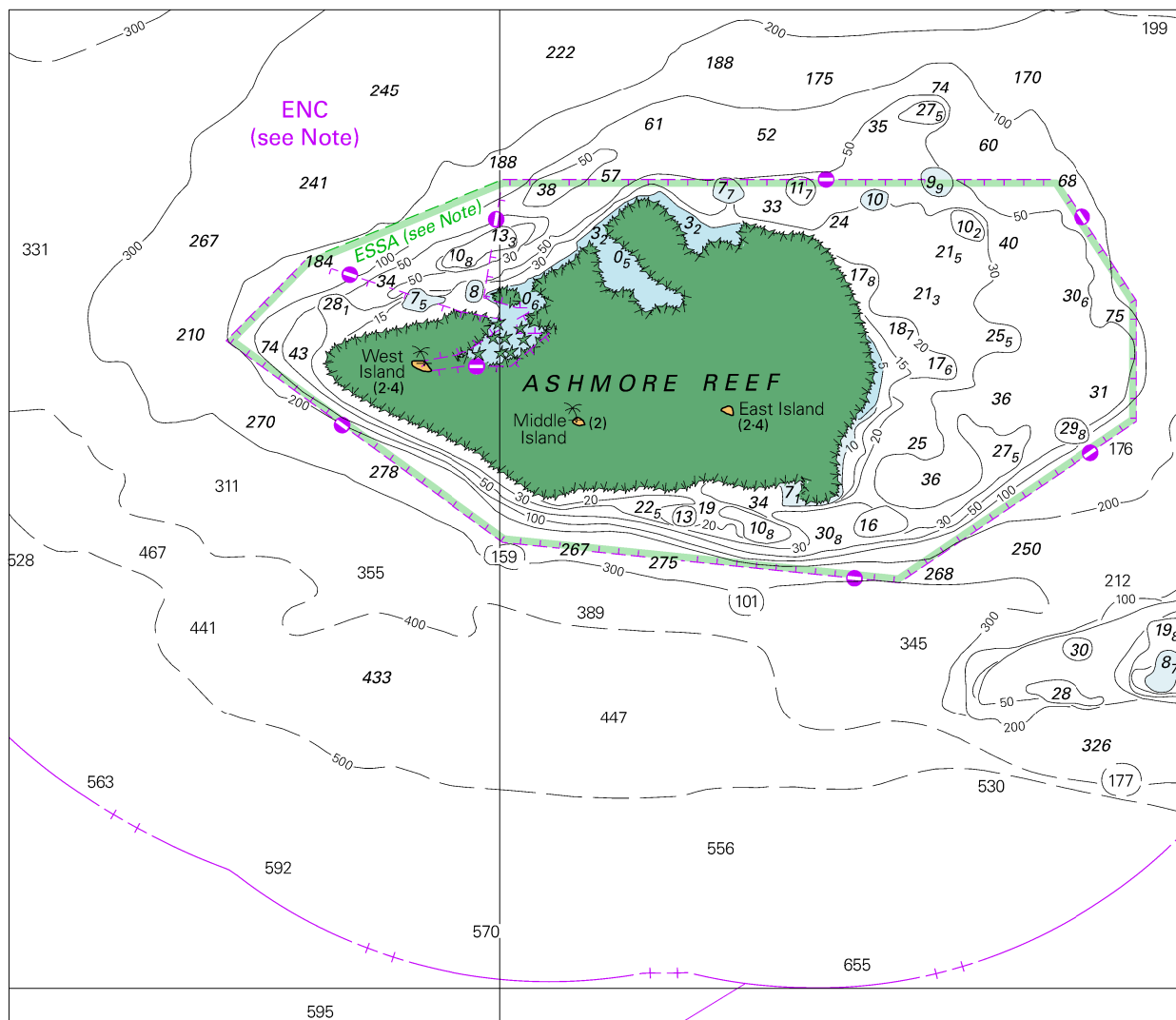


Block for chart Aus 293

© Commonwealth of Australia 2020

(188.8 x 145.1mm)

To accompany Australian Notice to Mariners 44/2021

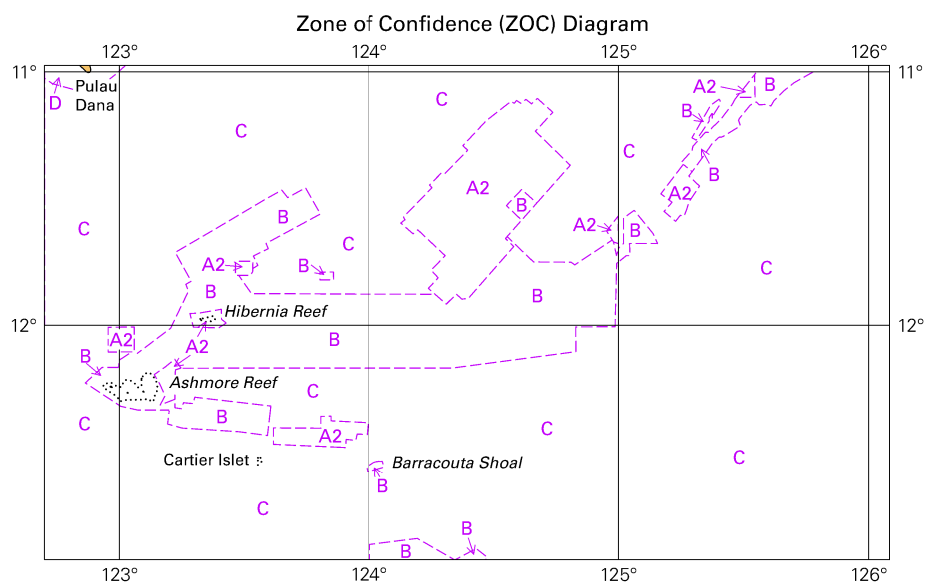


Block for chart Aus 314

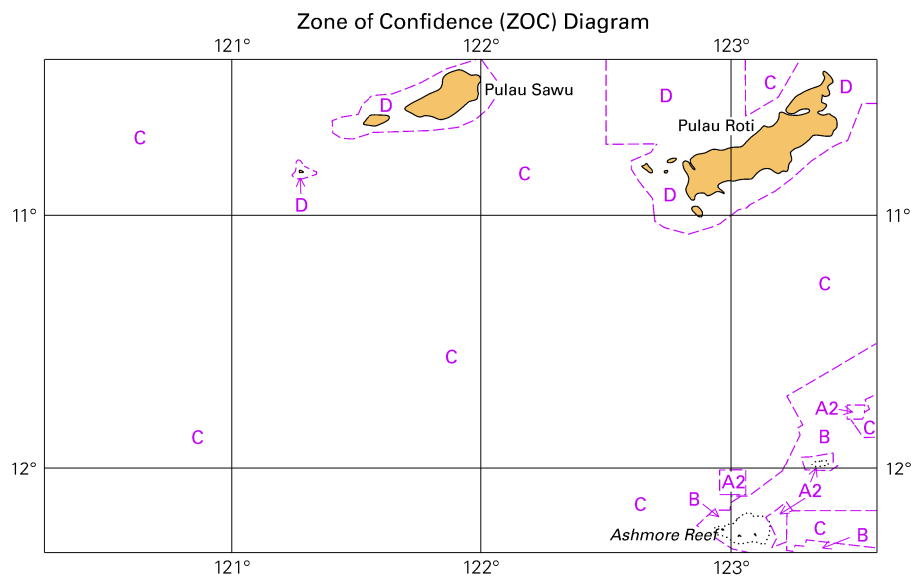
© Commonwealth of Australia 2021

(163.1 x 140.9mm)

To accompany Australian Notice to Mariners 44/2021

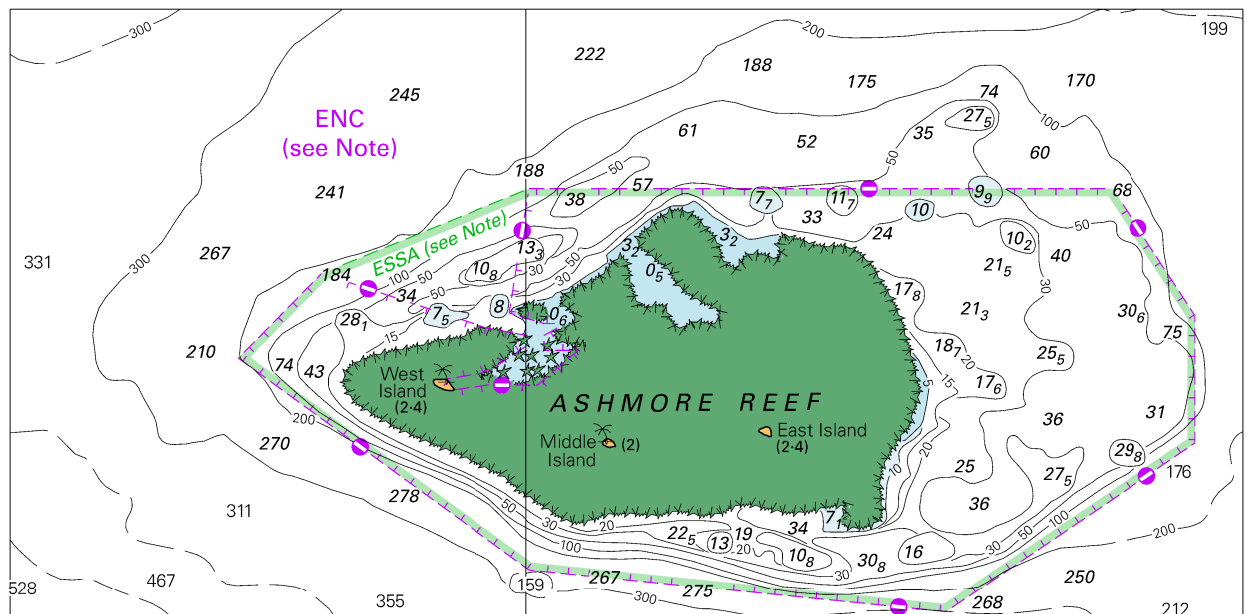


To accompany Australian Notice to Mariners 44/2021





To accompany Australian Notice to Mariners 44/2021

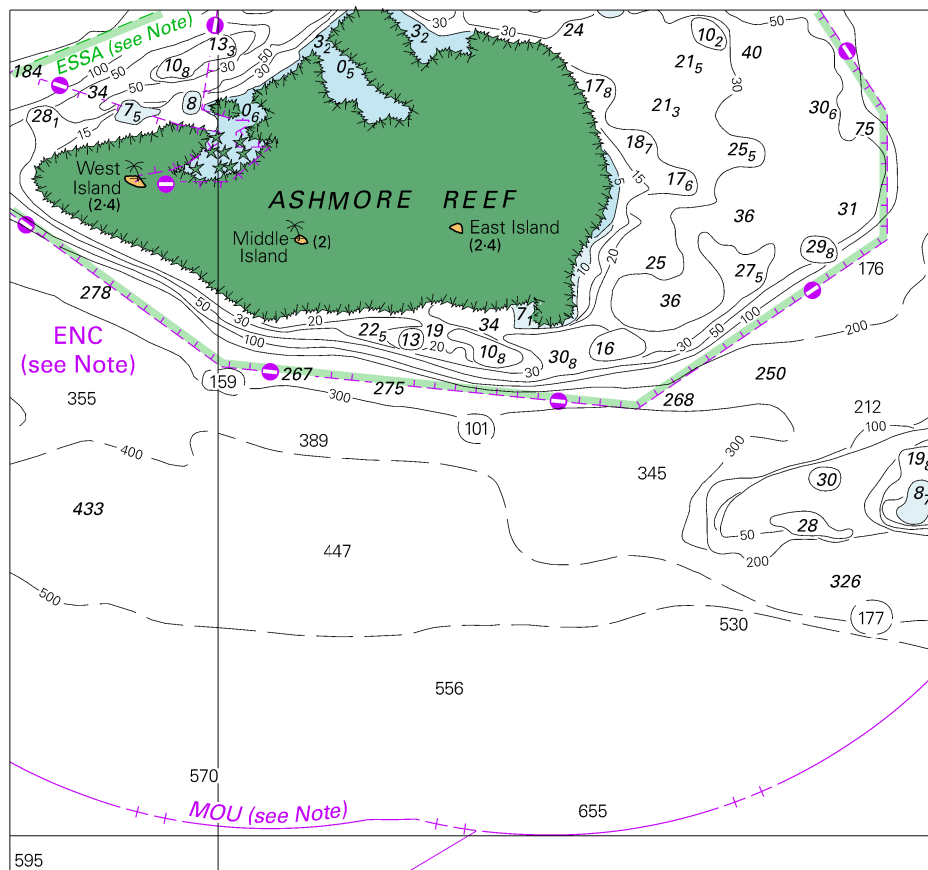


Block for chart Aus 317

© Commonwealth of Australia 2021

(163.1 x 80.1mm)

To accompany Australian Notice to Mariners 44/2021

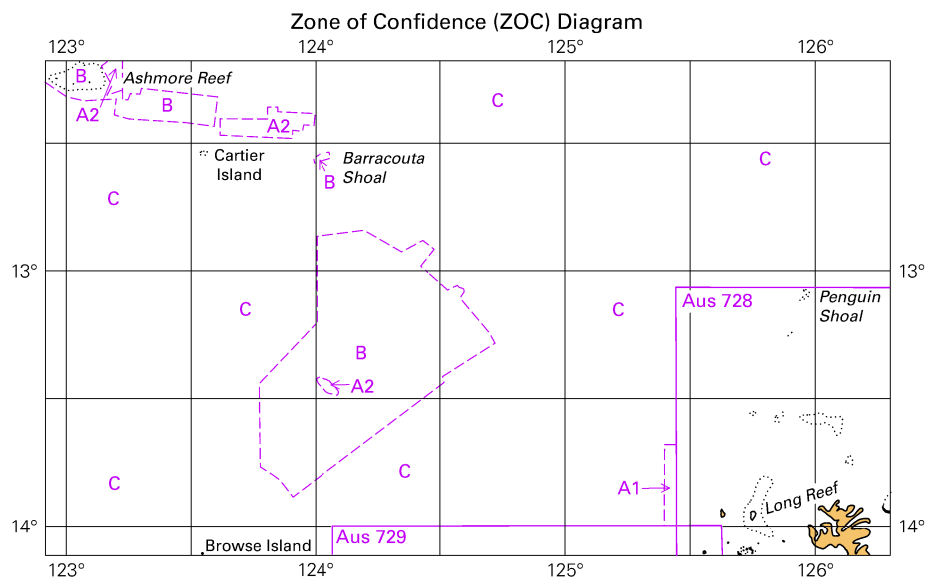


Block for chart Aus 319

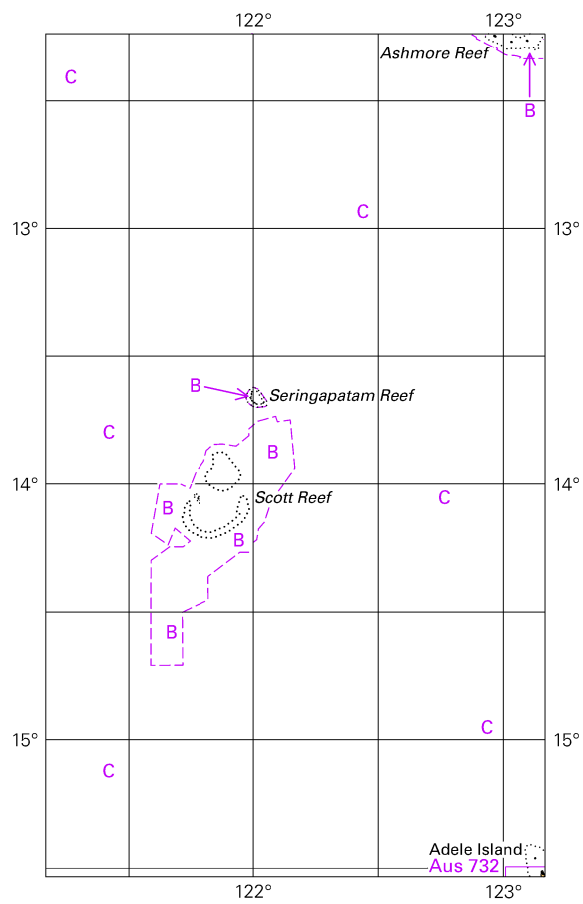
© Commonwealth of Australia 2021

(121.9 x 114.0mm)

To accompany Australian Notice to Mariners 44/2021



To accompany Australian Notice to Mariners 46/2021

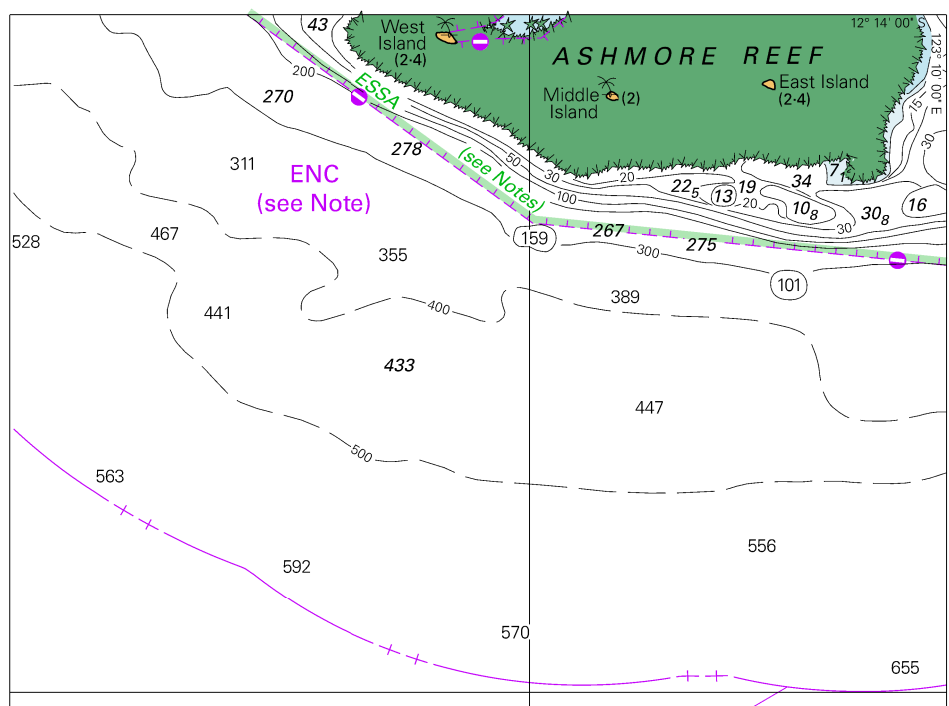


© Commonwealth of Australia 2021

Block for chart Aus 322

(66.0 x 111.5 mm)

To accompany Australian Notice to Mariners 46/2021

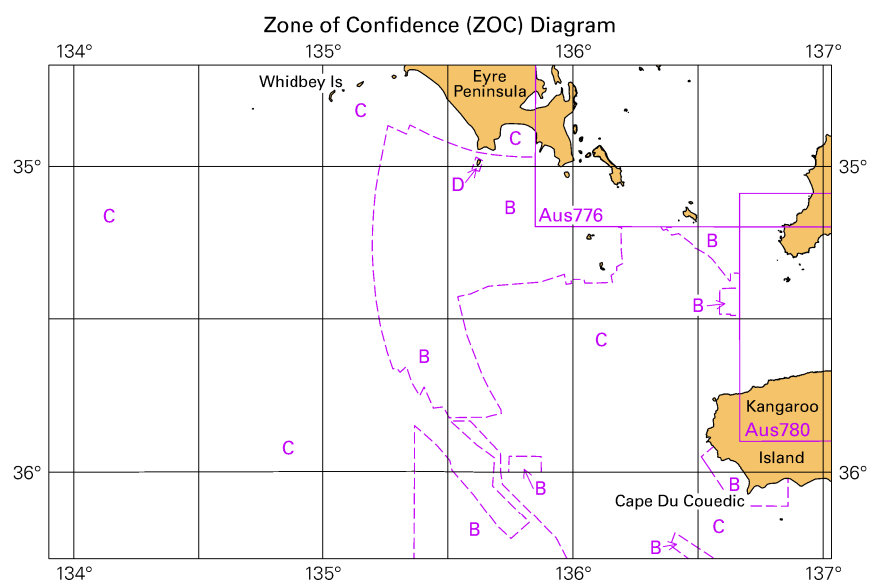


Block for chart Aus 322

© Commonwealth of Australia 2021

(123.8 x 91.5mm)

To accompany Australian Notice to Mariners 47/2021

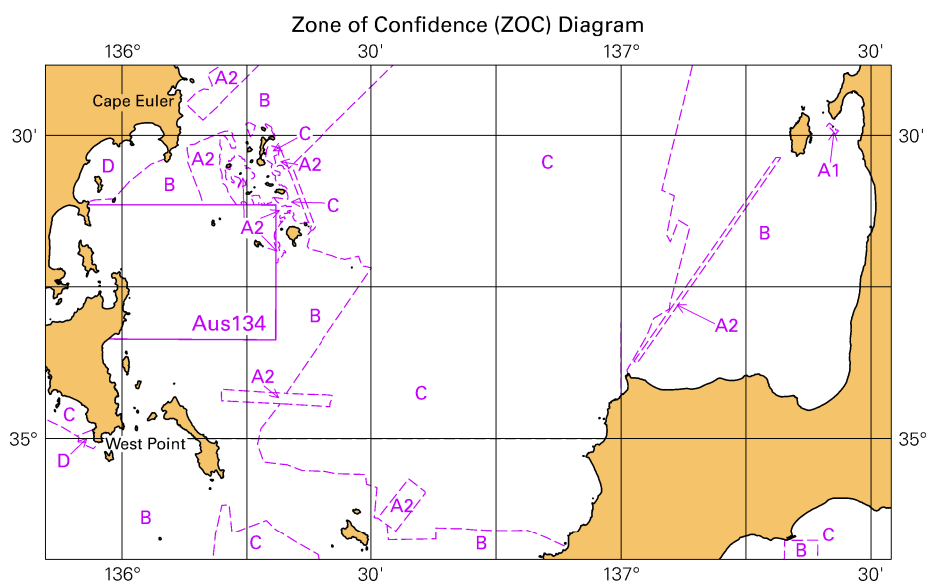


Block for chart Aus 343

(103.4 x 65.2mm)

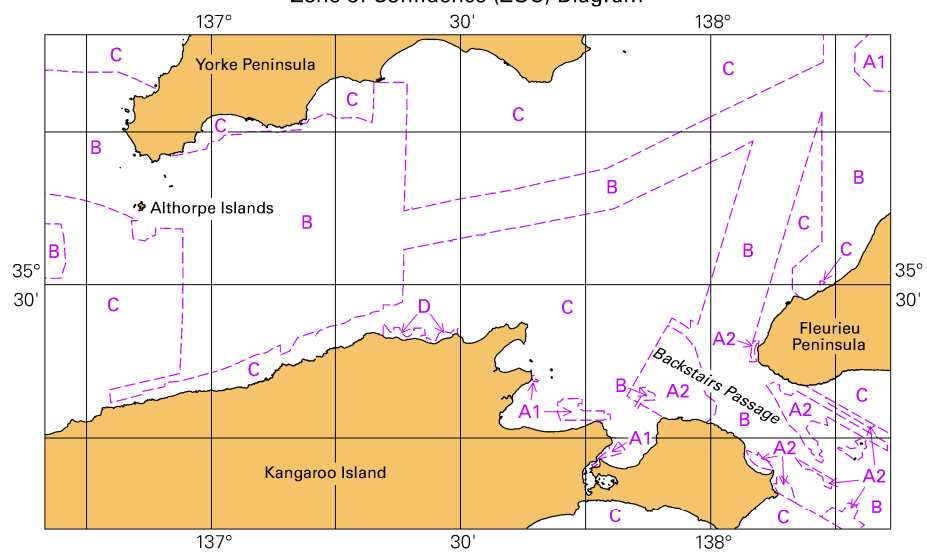
© Commonwealth of Australia 2021

To accompany Australian Notice to Mariners 47/2021



To accompany Australian Notice to Mariners 47/2021

Zone of Confidence (ZOC) Diagram



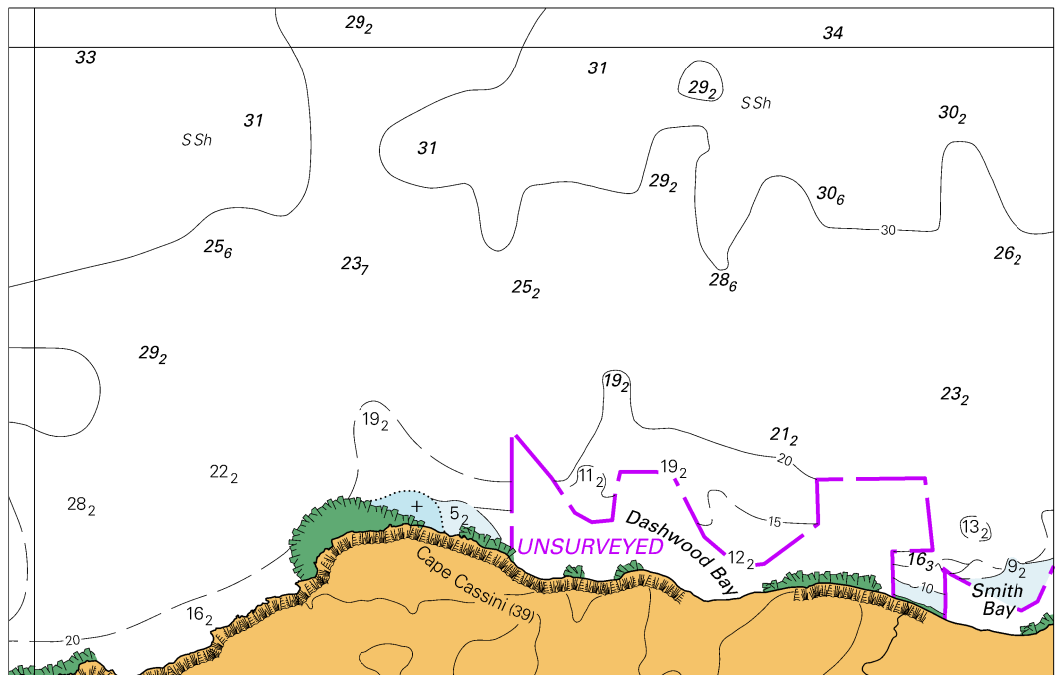
© Commonwealth of Australia 2021

Block for chart Aus 780

(111.8 x 65.4mm)



To accompany Australian Notice to Mariners 48/2021



Block A for chart Aus 780

© Commonwealth of Australia 2021

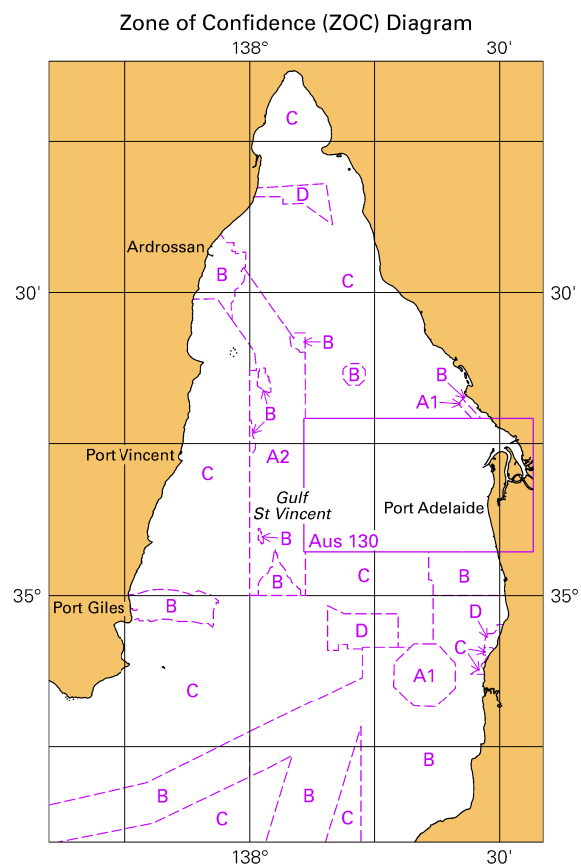
(138.2 x 88.4mm)

This is a detailed nautical chart of the Kingscote Harbor area in South Australia. The chart shows the coastline of the Kingscote Peninsula, including Emu Bay, White Point, Point Marsden, Cape Rouge, The Spit, Bay of Shoals, Busby Islet, and Kingscote Harbor. It features numerous depth soundings, navigational markers, and labels for various geographical features. A dashed line indicates the boundary between the Kingscote and Nepean Harbors. The chart is oriented with North at the top.

© Commonwealth of Australia 2021

(200.9 x 154.7mm)

To accompany Australian Notice to Mariners 50/2021

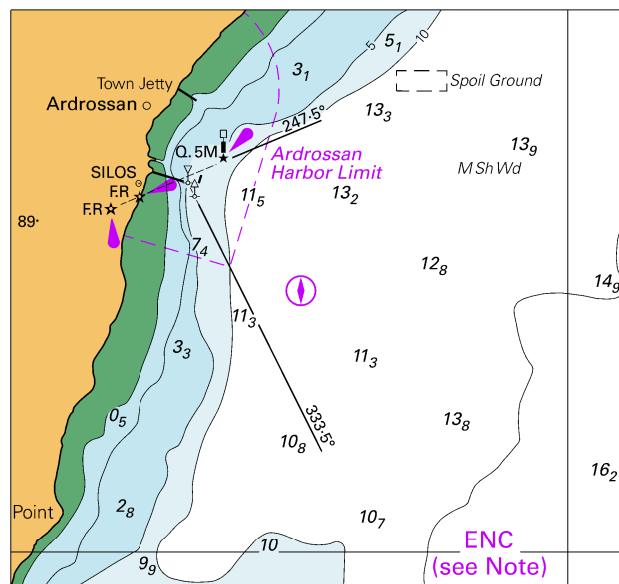


© Commonwealth of Australia 2021

Block for chart Aus 781

(65.4 x 103.2mm)

To accompany Australian Notice to Mariners 50/2021



Block for chart Aus 781

(80.9 x 76.3mm)

© Commonwealth of Australia 2021